



Full wwPDB X-ray Structure Validation Report ⓘ

Aug 7, 2023 – 09:50 PM EDT

PDB ID : 1Q12
Title : Crystal Structure of the ATP-bound E. coli MalK
Authors : Chen, J.; Lu, G.; Lin, J.; Davidson, A.L.; Quiocho, F.A.
Deposited on : 2003-07-18
Resolution : 2.60 Å(reported)

This is a Full wwPDB X-ray Structure Validation Report for a publicly released PDB entry.

We welcome your comments at validation@mail.wwpdb.org

A user guide is available at

<https://www.wwpdb.org/validation/2017/XrayValidationReportHelp>

with specific help available everywhere you see the ⓘ symbol.

The types of validation reports are described at

<http://www.wwpdb.org/validation/2017/FAQs#types>.

The following versions of software and data (see [references ⓘ](#)) were used in the production of this report:

MolProbity : 4.02b-467
Mogul : 1.8.5 (274361), CSD as541be (2020)
Xtriage (Phenix) : 1.13
EDS : 2.35
buster-report : 1.1.7 (2018)
Percentile statistics : 20191225.v01 (using entries in the PDB archive December 25th 2019)
Refmac : 5.8.0158
CCP4 : 7.0.044 (Gargrove)
Ideal geometry (proteins) : Engh & Huber (2001)
Ideal geometry (DNA, RNA) : Parkinson et al. (1996)
Validation Pipeline (wwPDB-VP) : 2.35

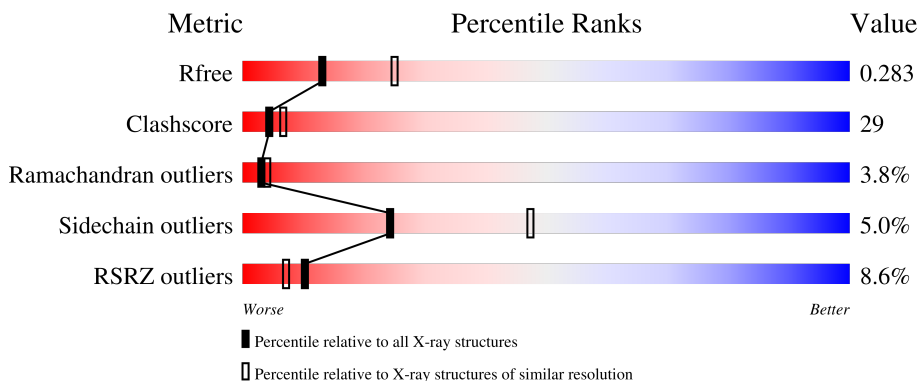
1 Overall quality at a glance

The following experimental techniques were used to determine the structure:

X-RAY DIFFRACTION

The reported resolution of this entry is 2.60 Å.

Percentile scores (ranging between 0-100) for global validation metrics of the entry are shown in the following graphic. The table shows the number of entries on which the scores are based.



Metric	Whole archive (#Entries)	Similar resolution (#Entries, resolution range(Å))
R_{free}	130704	3163 (2.60-2.60)
Clashscore	141614	3518 (2.60-2.60)
Ramachandran outliers	138981	3455 (2.60-2.60)
Sidechain outliers	138945	3455 (2.60-2.60)
RSRZ outliers	127900	3104 (2.60-2.60)

The table below summarises the geometric issues observed across the polymeric chains and their fit to the electron density. The red, orange, yellow and green segments of the lower bar indicate the fraction of residues that contain outliers for ≥ 3 , 2, 1 and 0 types of geometric quality criteria respectively. A grey segment represents the fraction of residues that are not modelled. The numeric value for each fraction is indicated below the corresponding segment, with a dot representing fractions $\leq 5\%$. The upper red bar (where present) indicates the fraction of residues that have poor fit to the electron density. The numeric value is given above the bar.

Mol	Chain	Length	Quality of chain
1	A	381	
1	B	381	
1	C	381	
1	D	381	

2 Entry composition i

There are 3 unique types of molecules in this entry. The entry contains 11546 atoms, of which 0 are hydrogens and 0 are deuteriums.

In the tables below, the ZeroOcc column contains the number of atoms modelled with zero occupancy, the AltConf column contains the number of residues with at least one atom in alternate conformation and the Trace column contains the number of residues modelled with at most 2 atoms.

- Molecule 1 is a protein called Maltose/maltodextrin transport ATP-binding protein malK.

Mol	Chain	Residues	Atoms					ZeroOcc	AltConf	Trace
			Total	C	N	O	S			
1	A	367	2853	1805	511	524	13	0	0	0
1	B	367	2853	1805	511	524	13	0	0	0
1	C	367	2853	1805	511	524	13	0	0	0
1	D	367	2853	1805	511	524	13	0	0	0

There are 40 discrepancies between the modelled and reference sequences:

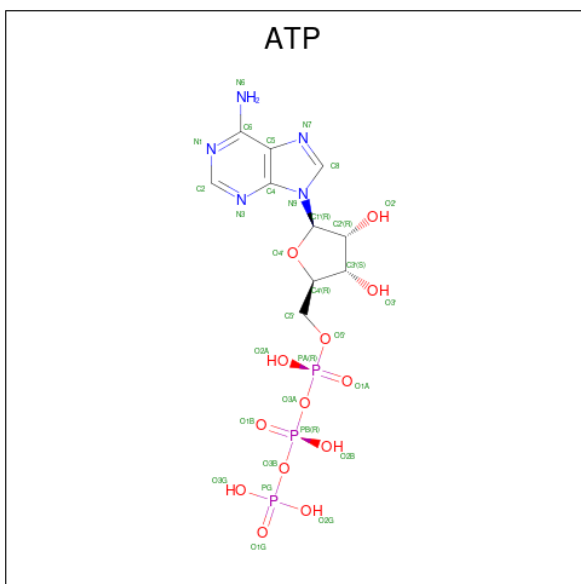
Chain	Residue	Modelled	Actual	Comment	Reference
A	372	ALA	-	expression tag	UNP P68187
A	373	SER	-	expression tag	UNP P68187
A	374	ALA	-	expression tag	UNP P68187
A	375	SER	-	expression tag	UNP P68187
A	376	HIS	-	expression tag	UNP P68187
A	377	HIS	-	expression tag	UNP P68187
A	378	HIS	-	expression tag	UNP P68187
A	379	HIS	-	expression tag	UNP P68187
A	380	HIS	-	expression tag	UNP P68187
A	381	HIS	-	expression tag	UNP P68187
B	372	ALA	-	expression tag	UNP P68187
B	373	SER	-	expression tag	UNP P68187
B	374	ALA	-	expression tag	UNP P68187
B	375	SER	-	expression tag	UNP P68187
B	376	HIS	-	expression tag	UNP P68187
B	377	HIS	-	expression tag	UNP P68187
B	378	HIS	-	expression tag	UNP P68187
B	379	HIS	-	expression tag	UNP P68187
B	380	HIS	-	expression tag	UNP P68187
B	381	HIS	-	expression tag	UNP P68187
C	372	ALA	-	expression tag	UNP P68187

Continued on next page...

Continued from previous page...

Chain	Residue	Modelled	Actual	Comment	Reference
C	373	SER	-	expression tag	UNP P68187
C	374	ALA	-	expression tag	UNP P68187
C	375	SER	-	expression tag	UNP P68187
C	376	HIS	-	expression tag	UNP P68187
C	377	HIS	-	expression tag	UNP P68187
C	378	HIS	-	expression tag	UNP P68187
C	379	HIS	-	expression tag	UNP P68187
C	380	HIS	-	expression tag	UNP P68187
C	381	HIS	-	expression tag	UNP P68187
D	372	ALA	-	expression tag	UNP P68187
D	373	SER	-	expression tag	UNP P68187
D	374	ALA	-	expression tag	UNP P68187
D	375	SER	-	expression tag	UNP P68187
D	376	HIS	-	expression tag	UNP P68187
D	377	HIS	-	expression tag	UNP P68187
D	378	HIS	-	expression tag	UNP P68187
D	379	HIS	-	expression tag	UNP P68187
D	380	HIS	-	expression tag	UNP P68187
D	381	HIS	-	expression tag	UNP P68187

- Molecule 2 is ADENOSINE-5'-TRIPHOSPHATE (three-letter code: ATP) (formula: $C_{10}H_{16}N_5O_{13}P_3$).



Mol	Chain	Residues	Atoms				ZeroOcc	AltConf	
			Total	C	N	O			P
2	A	1	31	10	5	13	3	0	0

Continued on next page...

Continued from previous page...

Mol	Chain	Residues	Atoms					ZeroOcc	AltConf
2	B	1	Total	C	N	O	P	0	0
			31	10	5	13	3		
2	C	1	Total	C	N	O	P	0	0
			31	10	5	13	3		
2	D	1	Total	C	N	O	P	0	0
			31	10	5	13	3		

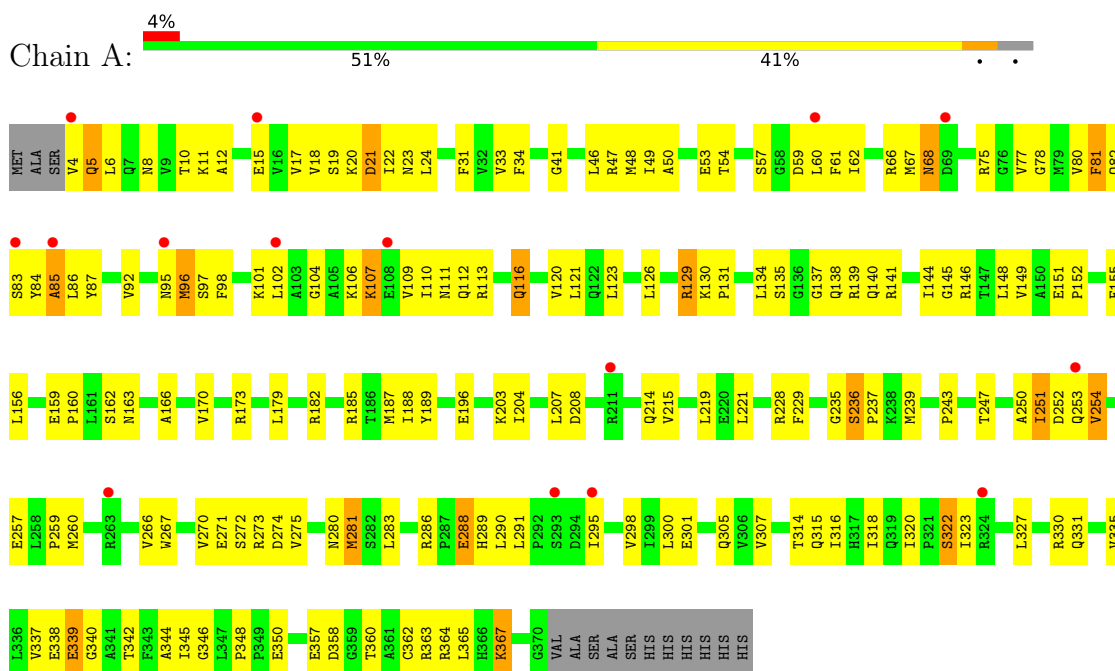
- Molecule 3 is water.

Mol	Chain	Residues	Atoms		ZeroOcc	AltConf
3	C	9	Total	O	0	0
			9	9		
3	D	1	Total	O	0	0
			1	1		

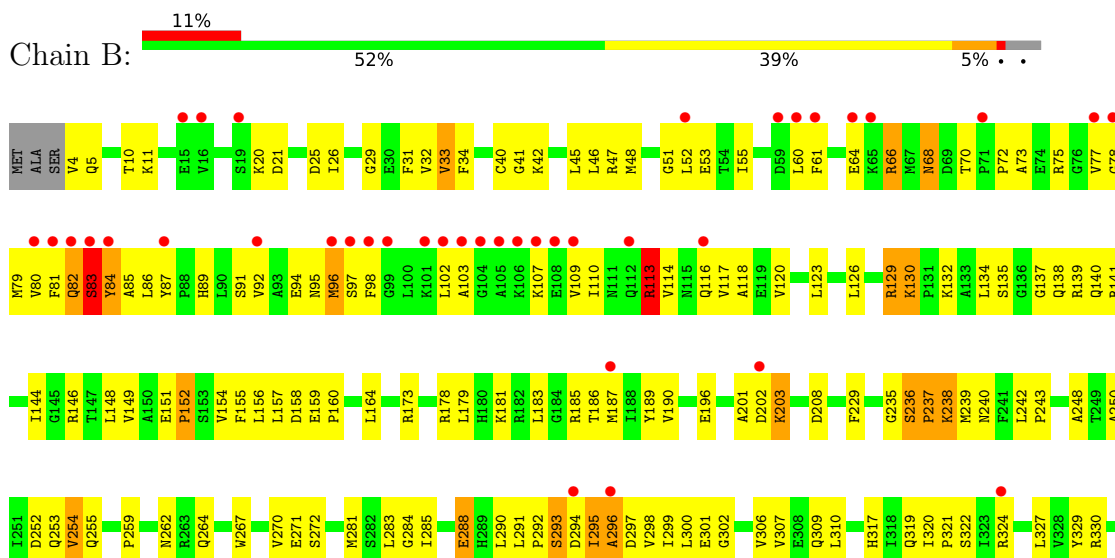
3 Residue-property plots i

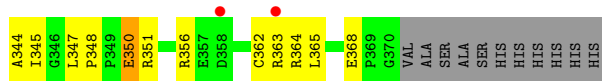
These plots are drawn for all protein, RNA, DNA and oligosaccharide chains in the entry. The first graphic for a chain summarises the proportions of the various outlier classes displayed in the second graphic. The second graphic shows the sequence view annotated by issues in geometry and electron density. Residues are color-coded according to the number of geometric quality criteria for which they contain at least one outlier: green = 0, yellow = 1, orange = 2 and red = 3 or more. A red dot above a residue indicates a poor fit to the electron density ($RSRZ > 2$). Stretches of 2 or more consecutive residues without any outlier are shown as a green connector. Residues present in the sample, but not in the model, are shown in grey.

- Molecule 1: Maltose/maltodextrin transport ATP-binding protein malK

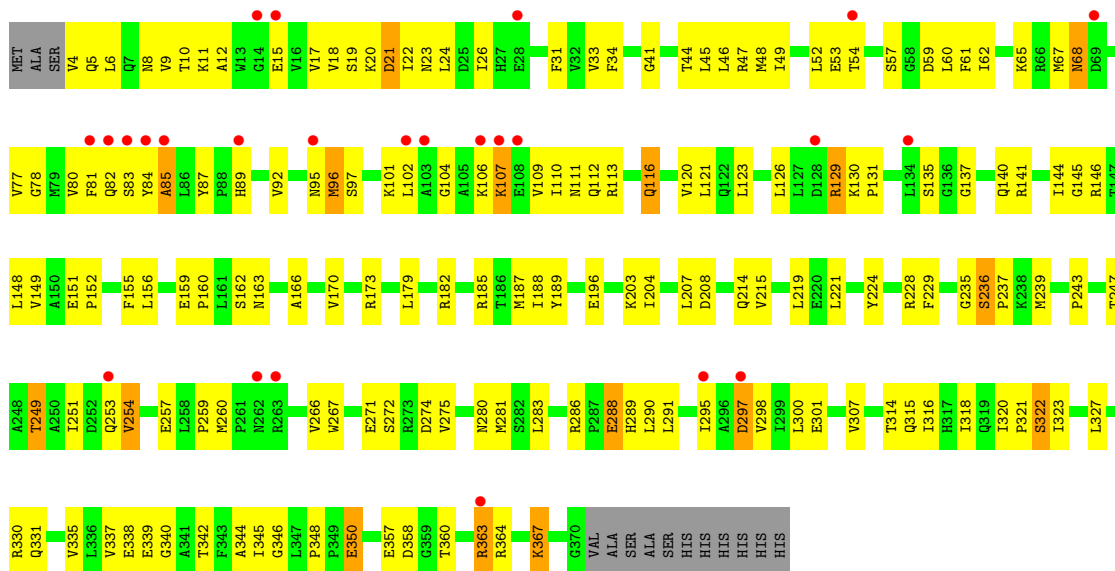


- Molecule 1: Maltose/maltodextrin transport ATP-binding protein malK

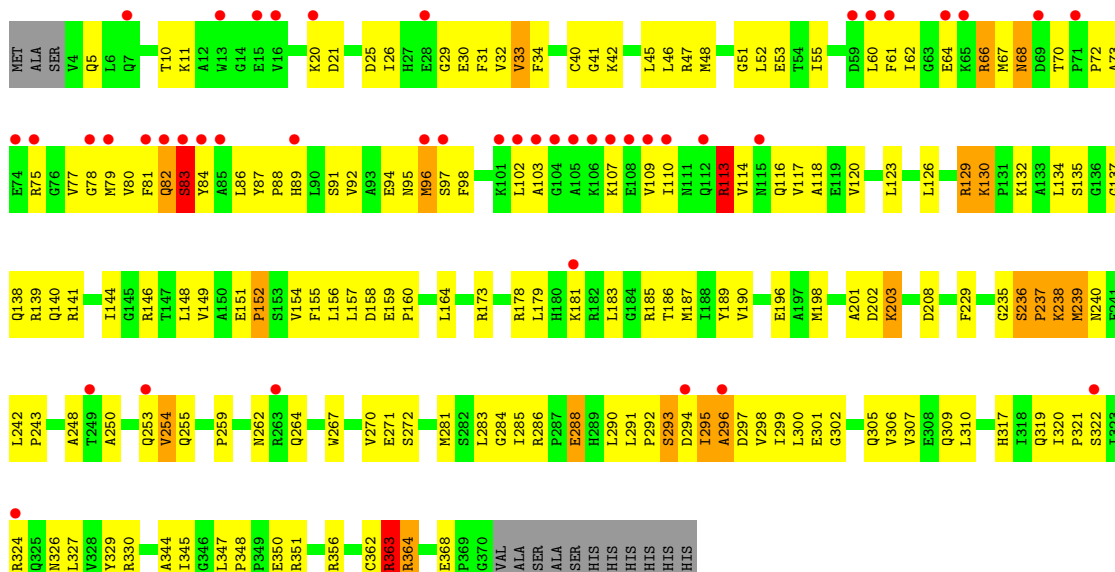




• Molecule 1: Maltose/maltodextrin transport ATP-binding protein malK



• Molecule 1: Maltose/maltodextrin transport ATP-binding protein malK



4 Data and refinement statistics

Property	Value	Source
Space group	P 1	Depositor
Cell constants a, b, c, α , β , γ	59.88Å 97.28Å 101.86Å 74.59° 82.47° 76.85°	Depositor
Resolution (Å)	14.80 – 2.60 14.85 – 2.53	Depositor EDS
% Data completeness (in resolution range)	86.4 (14.80-2.60) 85.9 (14.85-2.53)	Depositor EDS
R_{merge}	0.10	Depositor
R_{sym}	0.11	Depositor
$\langle I/\sigma(I) \rangle$ ¹	3.41 (at 2.54Å)	Xtrriage
Refinement program	CNS 1.1	Depositor
R, R_{free}	0.258 , 0.286 0.259 , 0.283	Depositor DCC
R_{free} test set	9525 reflections (7.63%)	wwPDB-VP
Wilson B-factor (Å ²)	42.7	Xtrriage
Anisotropy	0.290	Xtrriage
Bulk solvent k_{sol} (e/Å ³), B_{sol} (Å ²)	0.35 , 56.3	EDS
L-test for twinning ²	$\langle L \rangle = 0.50$, $\langle L^2 \rangle = 0.33$	Xtrriage
Estimated twinning fraction	No twinning to report.	Xtrriage
F_o, F_c correlation	0.90	EDS
Total number of atoms	11546	wwPDB-VP
Average B, all atoms (Å ²)	70.0	wwPDB-VP

Xtrriage's analysis on translational NCS is as follows: *The largest off-origin peak in the Patterson function is 4.54% of the height of the origin peak. No significant pseudotranslation is detected.*

¹Intensities estimated from amplitudes.

²Theoretical values of $\langle |L| \rangle$, $\langle L^2 \rangle$ for acentric reflections are 0.5, 0.333 respectively for untwinned datasets, and 0.375, 0.2 for perfectly twinned datasets.

5 Model quality i

5.1 Standard geometry i

Bond lengths and bond angles in the following residue types are not validated in this section: ATP

The Z score for a bond length (or angle) is the number of standard deviations the observed value is removed from the expected value. A bond length (or angle) with $|Z| > 5$ is considered an outlier worth inspection. RMSZ is the root-mean-square of all Z scores of the bond lengths (or angles).

Mol	Chain	Bond lengths		Bond angles	
		RMSZ	# Z >5	RMSZ	# Z >5
1	A	0.50	0/2903	0.81	10/3936 (0.3%)
1	B	0.49	0/2903	0.81	6/3936 (0.2%)
1	C	0.47	0/2903	0.75	4/3936 (0.1%)
1	D	0.49	0/2903	0.82	8/3936 (0.2%)
All	All	0.49	0/11612	0.80	28/15744 (0.2%)

There are no bond length outliers.

All (28) bond angle outliers are listed below:

Mol	Chain	Res	Type	Atoms	Z	Observed(°)	Ideal(°)
1	C	364	ARG	NE-CZ-NH2	7.54	124.07	120.30
1	D	363	ARG	NE-CZ-NH2	7.44	124.02	120.30
1	A	66	ARG	NE-CZ-NH2	7.43	124.02	120.30
1	D	364	ARG	NE-CZ-NH2	7.43	124.01	120.30
1	B	364	ARG	NE-CZ-NH2	7.43	124.01	120.30
1	A	364	ARG	NE-CZ-NH2	7.39	124.00	120.30
1	A	363	ARG	NE-CZ-NH2	7.10	123.85	120.30
1	A	47	ARG	NE-CZ-NH2	7.10	123.85	120.30
1	D	129	ARG	NE-CZ-NH2	6.83	123.72	120.30
1	B	129	ARG	NE-CZ-NH2	6.71	123.66	120.30
1	B	139	ARG	NE-CZ-NH2	6.67	123.64	120.30
1	D	113	ARG	NE-CZ-NH2	6.64	123.62	120.30
1	B	113	ARG	NE-CZ-NH2	6.59	123.60	120.30
1	D	139	ARG	NE-CZ-NH2	6.58	123.59	120.30
1	C	363	ARG	NE-CZ-NH2	6.50	123.55	120.30
1	A	273	ARG	NE-CZ-NH2	6.34	123.47	120.30
1	A	67	MET	CG-SD-CE	6.12	109.99	100.20
1	D	239	MET	CG-SD-CE	6.11	109.98	100.20
1	A	96	MET	CG-SD-CE	6.09	109.95	100.20
1	C	239	MET	CG-SD-CE	6.08	109.93	100.20

Continued on next page...

Continued from previous page...

Mol	Chain	Res	Type	Atoms	Z	Observed(°)	Ideal(°)
1	A	48	MET	CG-SD-CE	5.98	109.78	100.20
1	A	239	MET	CG-SD-CE	5.83	109.53	100.20
1	C	96	MET	CG-SD-CE	5.83	109.53	100.20
1	B	239	MET	CG-SD-CE	5.80	109.49	100.20
1	B	96	MET	CG-SD-CE	5.77	109.43	100.20
1	D	96	MET	CG-SD-CE	5.76	109.42	100.20
1	D	198	MET	CG-SD-CE	5.73	109.37	100.20
1	A	281	MET	CG-SD-CE	5.67	109.27	100.20

There are no chirality outliers.

There are no planarity outliers.

5.2 Too-close contacts [i](#)

In the following table, the Non-H and H(model) columns list the number of non-hydrogen atoms and hydrogen atoms in the chain respectively. The H(added) column lists the number of hydrogen atoms added and optimized by MolProbity. The Clashes column lists the number of clashes within the asymmetric unit, whereas Symm-Clashes lists symmetry-related clashes.

Mol	Chain	Non-H	H(model)	H(added)	Clashes	Symm-Clashes
1	A	2853	0	2918	172	0
1	B	2853	0	2918	166	1
1	C	2853	0	2918	169	1
1	D	2853	0	2918	165	0
2	A	31	0	12	3	0
2	B	31	0	12	2	0
2	C	31	0	12	3	0
2	D	31	0	12	2	0
3	C	9	0	0	0	0
3	D	1	0	0	0	0
All	All	11546	0	11720	672	1

The all-atom clashscore is defined as the number of clashes found per 1000 atoms (including hydrogen atoms). The all-atom clashscore for this structure is 29.

All (672) close contacts within the same asymmetric unit are listed below, sorted by their clash magnitude.

Atom-1	Atom-2	Interatomic distance (Å)	Clash overlap (Å)
1:A:253:GLN:O	1:A:254:VAL:HG23	1.32	1.29
1:D:253:GLN:O	1:D:254:VAL:HG23	1.14	1.25

Continued on next page...

Continued from previous page...

Atom-1	Atom-2	Interatomic distance (Å)	Clash overlap (Å)
1:B:236:SER:OG	1:B:237:PRO:HD2	1.36	1.25
1:A:236:SER:OG	1:A:237:PRO:HD2	1.36	1.25
1:C:236:SER:OG	1:C:237:PRO:HD2	1.36	1.24
1:D:236:SER:OG	1:D:237:PRO:HD2	1.34	1.24
1:D:253:GLN:O	1:D:254:VAL:CG2	1.89	1.19
1:C:236:SER:HB2	1:C:237:PRO:HD3	1.34	1.08
1:D:236:SER:OG	1:D:237:PRO:CD	2.01	1.08
1:A:236:SER:OG	1:A:237:PRO:CD	2.04	1.06
1:C:236:SER:CB	1:C:237:PRO:CD	2.34	1.05
1:B:236:SER:OG	1:B:237:PRO:CD	2.04	1.05
1:D:83:SER:O	1:D:84:TYR:CD2	2.11	1.04
1:B:83:SER:O	1:B:84:TYR:CD2	2.15	0.99
1:C:253:GLN:O	1:C:254:VAL:HB	1.63	0.99
1:C:68:ASN:HD22	1:C:68:ASN:H	1.12	0.97
1:D:236:SER:CB	1:D:237:PRO:CD	2.42	0.97
1:B:236:SER:CB	1:B:237:PRO:CD	2.44	0.96
1:C:288:GLU:HG3	1:C:330:ARG:HD3	1.49	0.94
1:A:288:GLU:HG3	1:A:330:ARG:HD3	1.49	0.94
1:C:236:SER:OG	1:C:237:PRO:CD	2.15	0.94
1:A:253:GLN:O	1:A:254:VAL:CG2	2.17	0.93
1:C:236:SER:HB2	1:C:237:PRO:CD	1.97	0.92
1:C:4:VAL:HG13	1:C:26:ILE:O	1.70	0.91
1:D:236:SER:HB2	1:D:237:PRO:HD3	1.53	0.88
1:D:87:TYR:H	1:D:95:ASN:HD21	1.21	0.88
1:B:236:SER:HB2	1:B:237:PRO:HD3	1.54	0.88
1:C:314:THR:CG2	1:C:316:ILE:HD11	2.05	0.87
1:C:110:ILE:HG12	1:C:111:ASN:H	1.38	0.87
1:A:110:ILE:HG12	1:A:111:ASN:H	1.38	0.87
1:B:87:TYR:H	1:B:95:ASN:HD21	1.21	0.87
1:A:101:LYS:HG3	1:A:102:LEU:H	1.39	0.86
1:C:101:LYS:HG3	1:C:102:LEU:H	1.39	0.86
1:D:236:SER:CB	1:D:237:PRO:HD3	2.06	0.85
1:B:135:SER:H	1:B:138:GLN:HE21	1.22	0.85
1:A:314:THR:CG2	1:A:316:ILE:HD11	2.05	0.85
1:C:314:THR:HG22	1:C:316:ILE:HD11	1.59	0.84
1:D:135:SER:H	1:D:138:GLN:HE21	1.22	0.84
1:A:314:THR:HG22	1:A:316:ILE:HD11	1.59	0.84
1:A:96:MET:HA	1:A:146:ARG:HA	1.61	0.82
1:B:236:SER:CB	1:B:237:PRO:HD3	2.09	0.82
1:D:253:GLN:O	1:D:254:VAL:CB	2.28	0.81
1:D:20:LYS:HG3	1:D:21:ASP:H	1.45	0.81

Continued on next page...

Continued from previous page...

Atom-1	Atom-2	Interatomic distance (Å)	Clash overlap (Å)
1:B:253:GLN:O	1:B:254:VAL:HB	1.79	0.81
1:D:253:GLN:C	1:D:254:VAL:HG23	2.01	0.81
1:C:96:MET:HA	1:C:146:ARG:HA	1.61	0.81
1:B:20:LYS:HG3	1:B:21:ASP:H	1.45	0.80
1:C:253:GLN:O	1:C:254:VAL:CB	2.27	0.80
1:A:236:SER:CB	1:A:237:PRO:CD	2.57	0.80
1:B:250:ALA:HB3	1:B:253:GLN:HB2	1.64	0.79
1:C:271:GLU:O	1:C:272:SER:HB3	1.82	0.78
1:D:130:LYS:HD3	1:D:130:LYS:N	1.98	0.78
1:B:82:GLN:HA	1:B:140:GLN:OE1	1.84	0.78
1:C:68:ASN:HD22	1:C:68:ASN:N	1.79	0.78
1:B:130:LYS:HD3	1:B:130:LYS:N	1.98	0.78
1:B:135:SER:H	1:B:138:GLN:NE2	1.82	0.77
1:C:224:TYR:CG	1:C:363:ARG:NH2	2.52	0.77
1:B:68:ASN:N	1:B:68:ASN:HD22	1.80	0.77
1:D:68:ASN:N	1:D:68:ASN:HD22	1.80	0.77
1:C:291:LEU:HG	1:C:348:PRO:HG3	1.65	0.77
1:D:82:GLN:HA	1:D:140:GLN:OE1	1.84	0.77
1:A:68:ASN:HD22	1:A:68:ASN:H	1.30	0.77
1:B:202:ASP:O	1:B:203:LYS:HB2	1.85	0.77
1:D:86:LEU:HD23	1:D:146:ARG:NH2	2.00	0.77
1:A:60:LEU:H	1:A:68:ASN:HD21	1.33	0.76
1:B:248:ALA:HB3	1:B:267:TRP:CH2	2.20	0.76
1:A:271:GLU:O	1:A:272:SER:HB3	1.83	0.76
1:D:135:SER:H	1:D:138:GLN:NE2	1.82	0.76
1:A:291:LEU:HG	1:A:348:PRO:HG3	1.68	0.76
1:D:86:LEU:HA	1:D:146:ARG:HH22	1.51	0.76
1:A:34:PHE:HD1	1:A:207:LEU:HD11	1.51	0.75
1:C:236:SER:CB	1:C:237:PRO:HD2	2.10	0.75
1:B:86:LEU:HD23	1:B:146:ARG:NH2	2.01	0.75
1:C:236:SER:CB	1:C:237:PRO:HD3	2.05	0.75
1:A:4:VAL:HG12	1:A:4:VAL:O	1.88	0.74
1:C:34:PHE:HD1	1:C:207:LEU:HD11	1.51	0.74
1:B:86:LEU:HA	1:B:146:ARG:HH22	1.51	0.73
1:B:78:GLY:HA3	1:B:152:PRO:HG2	1.70	0.73
1:A:250:ALA:HB3	1:A:253:GLN:HB2	1.70	0.73
1:A:78:GLY:HA3	1:A:152:PRO:HG2	1.70	0.73
1:D:78:GLY:HA3	1:D:152:PRO:HG2	1.70	0.72
1:D:173:ARG:NE	1:D:196:GLU:HG3	2.04	0.72
1:A:95:ASN:O	1:A:96:MET:HB2	1.89	0.72
1:B:173:ARG:NE	1:B:196:GLU:HG3	2.04	0.72

Continued on next page...

Continued from previous page...

Atom-1	Atom-2	Interatomic distance (Å)	Clash overlap (Å)
1:C:78:GLY:HA3	1:C:152:PRO:HG2	1.70	0.71
1:B:253:GLN:O	1:B:254:VAL:CB	2.38	0.71
1:A:237:PRO:HG2	1:A:330:ARG:HD2	1.73	0.70
1:D:237:PRO:HG2	1:D:330:ARG:HD2	1.74	0.70
1:A:110:ILE:C	1:A:112:GLN:H	1.95	0.70
1:D:283:LEU:C	1:D:283:LEU:HD23	2.13	0.69
1:C:95:ASN:O	1:C:96:MET:HB2	1.92	0.69
1:C:110:ILE:C	1:C:112:GLN:H	1.95	0.69
1:B:283:LEU:C	1:B:283:LEU:HD23	2.13	0.69
1:C:68:ASN:H	1:C:68:ASN:ND2	1.90	0.69
1:C:235:GLY:O	1:C:236:SER:O	2.11	0.68
1:C:300:LEU:HB3	1:C:320:ILE:HD13	1.76	0.68
1:C:60:LEU:H	1:C:68:ASN:HD21	1.41	0.68
1:A:85:ALA:HB1	1:A:146:ARG:NH1	2.07	0.67
1:A:300:LEU:HB3	1:A:320:ILE:HD13	1.76	0.67
1:C:110:ILE:HG12	1:C:111:ASN:N	2.09	0.67
1:C:101:LYS:NZ	1:C:102:LEU:HG	2.10	0.67
1:B:84:TYR:O	1:B:84:TYR:CD1	2.48	0.67
1:A:101:LYS:NZ	1:A:102:LEU:HG	2.09	0.67
1:D:84:TYR:O	1:D:84:TYR:CD1	2.47	0.67
1:A:110:ILE:HG12	1:A:111:ASN:N	2.09	0.67
1:A:33:VAL:CG2	1:A:204:ILE:HG12	2.25	0.67
1:C:208:ASP:HB2	1:C:229:PHE:CE2	2.30	0.67
1:C:155:PHE:HB2	1:C:187:MET:HG2	1.77	0.66
1:A:208:ASP:HB2	1:A:229:PHE:CE2	2.30	0.66
1:B:255:GLN:HB2	1:B:267:TRP:CE3	2.28	0.66
1:A:140:GLN:OE1	1:A:163:ASN:HB2	1.96	0.66
1:A:68:ASN:HD22	1:A:68:ASN:N	1.93	0.66
1:B:270:VAL:HG13	1:B:362:CYS:HB3	1.76	0.66
1:D:87:TYR:H	1:D:95:ASN:ND2	1.93	0.66
1:C:6:LEU:HD22	1:C:22:ILE:HD11	1.78	0.66
1:B:60:LEU:H	1:B:68:ASN:HD21	1.44	0.65
1:A:101:LYS:HZ3	1:A:102:LEU:HG	1.60	0.65
1:B:309:GLN:O	1:B:310:LEU:HD23	1.96	0.65
1:D:60:LEU:H	1:D:68:ASN:HD21	1.44	0.65
1:C:4:VAL:HG12	1:C:4:VAL:O	1.97	0.65
1:A:236:SER:CB	1:A:237:PRO:HD3	2.27	0.65
1:B:148:LEU:HD22	1:B:179:LEU:CD1	2.27	0.65
1:B:237:PRO:HG2	1:B:330:ARG:HD2	1.78	0.65
1:D:130:LYS:HD3	1:D:130:LYS:H	1.62	0.64
1:D:254:VAL:HG21	1:D:270:VAL:HG12	1.79	0.64

Continued on next page...

Continued from previous page...

Atom-1	Atom-2	Interatomic distance (Å)	Clash overlap (Å)
1:C:140:GLN:OE1	1:C:163:ASN:HB2	1.96	0.64
1:B:87:TYR:H	1:B:95:ASN:ND2	1.93	0.64
1:B:144:ILE:HD11	1:B:160:PRO:O	1.98	0.64
1:B:262:ASN:HD21	1:B:264:GLN:HB2	1.63	0.64
1:D:148:LEU:HD22	1:D:179:LEU:CD1	2.27	0.64
1:D:270:VAL:HG13	1:D:362:CYS:HB3	1.79	0.64
1:C:243:PRO:O	1:C:259:PRO:HG3	1.97	0.64
1:D:33:VAL:HG13	1:D:201:ALA:HB2	1.77	0.64
1:D:309:GLN:O	1:D:310:LEU:HD23	1.96	0.64
1:B:236:SER:HB2	1:B:237:PRO:CD	2.20	0.64
1:D:288:GLU:HG3	1:D:330:ARG:HD3	1.80	0.64
1:C:33:VAL:CG2	1:C:204:ILE:HG12	2.27	0.64
1:D:11:LYS:HB2	1:D:48:MET:HE1	1.79	0.64
1:D:144:ILE:HD11	1:D:160:PRO:O	1.98	0.64
1:A:87:TYR:CE1	1:A:98:PHE:CE2	2.86	0.64
1:A:155:PHE:HB2	1:A:187:MET:HG2	1.78	0.64
1:A:173:ARG:HE	1:A:196:GLU:HG3	1.63	0.64
1:B:248:ALA:CB	1:B:267:TRP:CH2	2.81	0.64
1:A:236:SER:HG	1:A:237:PRO:HD2	1.57	0.63
1:A:123:LEU:HD21	1:A:141:ARG:HB3	1.79	0.63
1:A:243:PRO:O	1:A:259:PRO:HG3	1.97	0.63
1:B:130:LYS:HD3	1:B:130:LYS:H	1.62	0.63
1:A:214:GLN:HG2	1:A:221:LEU:CD2	2.29	0.63
1:A:331:GLN:OE1	1:A:335:VAL:HG21	1.99	0.63
1:B:288:GLU:HG3	1:B:330:ARG:HD3	1.80	0.63
1:C:173:ARG:HE	1:C:196:GLU:HG3	1.63	0.63
1:D:262:ASN:HD21	1:D:264:GLN:HB2	1.63	0.63
1:B:34:PHE:HB2	1:B:190:VAL:HG22	1.80	0.62
1:D:270:VAL:HG22	1:D:362:CYS:O	1.99	0.62
1:B:271:GLU:O	1:B:272:SER:HB3	1.99	0.62
1:C:123:LEU:HD21	1:C:141:ARG:HB3	1.79	0.62
1:D:34:PHE:HB2	1:D:190:VAL:HG22	1.80	0.62
1:C:314:THR:HG22	1:C:316:ILE:CD1	2.30	0.62
1:D:155:PHE:O	1:D:156:LEU:HD23	2.00	0.62
1:B:155:PHE:O	1:B:156:LEU:HD23	2.00	0.62
1:C:214:GLN:HG2	1:C:221:LEU:CD2	2.29	0.62
1:D:271:GLU:O	1:D:272:SER:HB3	1.99	0.62
1:C:331:GLN:OE1	1:C:335:VAL:HG21	1.99	0.62
1:B:47:ARG:NH2	1:B:52:LEU:HB3	2.15	0.61
1:B:173:ARG:HE	1:B:196:GLU:HG3	1.65	0.61
1:B:141:ARG:HD2	1:B:164:LEU:HD21	1.82	0.61

Continued on next page...

Continued from previous page...

Atom-1	Atom-2	Interatomic distance (Å)	Clash overlap (Å)
1:C:33:VAL:HG22	1:C:204:ILE:HG12	1.82	0.61
1:A:367:LYS:HE3	1:A:367:LYS:HA	1.82	0.61
1:D:173:ARG:HE	1:D:196:GLU:HG3	1.65	0.61
1:C:92:VAL:O	1:C:96:MET:HE2	2.01	0.61
1:D:141:ARG:HD2	1:D:164:LEU:HD21	1.82	0.61
1:D:208:ASP:HB2	1:D:229:PHE:CE2	2.36	0.61
1:A:87:TYR:HE1	1:A:98:PHE:CE2	2.19	0.60
1:B:208:ASP:HB2	1:B:229:PHE:CE2	2.36	0.60
1:B:255:GLN:HB2	1:B:267:TRP:CZ3	2.36	0.60
1:C:288:GLU:CG	1:C:330:ARG:HD3	2.28	0.60
1:C:367:LYS:HE3	1:C:367:LYS:HA	1.82	0.60
1:C:253:GLN:HB3	1:C:267:TRP:CE3	2.37	0.60
1:D:47:ARG:NH2	1:D:52:LEU:HB3	2.15	0.60
1:B:262:ASN:ND2	1:B:264:GLN:HB2	2.17	0.60
1:D:301:GLU:HG2	1:D:344:ALA:HB2	1.84	0.60
1:D:281:MET:HE2	1:D:356:ARG:HA	1.84	0.59
1:A:236:SER:HB2	1:A:237:PRO:HD3	1.83	0.59
1:B:202:ASP:O	1:B:203:LYS:CB	2.50	0.59
1:B:248:ALA:CB	1:B:267:TRP:HH2	2.16	0.59
1:A:33:VAL:HG22	1:A:204:ILE:HG12	1.84	0.59
1:D:262:ASN:ND2	1:D:264:GLN:HB2	2.17	0.59
1:A:126:LEU:O	1:A:129:ARG:HB2	2.03	0.59
1:B:236:SER:O	1:B:238:LYS:N	2.35	0.59
1:C:126:LEU:O	1:C:129:ARG:HB2	2.03	0.59
1:A:314:THR:HG22	1:A:316:ILE:CD1	2.30	0.59
1:D:243:PRO:O	1:D:259:PRO:HD3	2.03	0.59
1:B:33:VAL:HA	1:B:189:TYR:O	2.03	0.58
1:B:81:PHE:CE2	1:B:157:LEU:HA	2.38	0.58
1:D:33:VAL:HA	1:D:189:TYR:O	2.03	0.58
1:D:327:LEU:HD23	1:D:345:ILE:HD11	1.85	0.58
1:B:255:GLN:HB2	1:B:267:TRP:CD2	2.38	0.58
1:A:250:ALA:HB3	1:A:253:GLN:CB	2.34	0.58
1:A:250:ALA:HB3	1:A:253:GLN:CG	2.33	0.58
1:A:110:ILE:O	1:A:112:GLN:N	2.37	0.58
1:C:101:LYS:HZ3	1:C:102:LEU:HG	1.68	0.58
1:C:290:LEU:HD13	1:C:345:ILE:HD12	1.85	0.58
1:A:203:LYS:HD3	1:A:215:VAL:CG1	2.34	0.58
1:D:81:PHE:CE2	1:D:157:LEU:HA	2.39	0.58
1:D:250:ALA:HB3	1:D:253:GLN:HB2	1.86	0.58
1:B:281:MET:HE2	1:B:356:ARG:HA	1.86	0.58
1:C:110:ILE:O	1:C:112:GLN:N	2.37	0.58

Continued on next page...

Continued from previous page...

Atom-1	Atom-2	Interatomic distance (Å)	Clash overlap (Å)
1:C:228:ARG:HG2	1:C:228:ARG:HH11	1.68	0.58
1:C:68:ASN:N	1:C:68:ASN:ND2	2.50	0.57
1:C:84:TYR:O	1:C:85:ALA:HB2	2.04	0.57
1:B:301:GLU:HG2	1:B:344:ALA:HB2	1.84	0.57
1:A:290:LEU:HD13	1:A:345:ILE:HD12	1.85	0.57
1:B:243:PRO:O	1:B:259:PRO:HD3	2.03	0.57
1:D:309:GLN:C	1:D:310:LEU:HD23	2.25	0.57
1:A:228:ARG:HG2	1:A:228:ARG:HH11	1.68	0.57
1:D:236:SER:O	1:D:238:LYS:N	2.37	0.57
1:B:11:LYS:HB2	1:B:48:MET:HE1	1.86	0.57
1:B:148:LEU:HD22	1:B:179:LEU:HD11	1.86	0.57
1:B:327:LEU:HD23	1:B:345:ILE:HD11	1.85	0.57
1:C:45:LEU:HA	1:C:48:MET:CE	2.34	0.57
1:D:68:ASN:N	1:D:68:ASN:ND2	2.52	0.57
1:B:309:GLN:C	1:B:310:LEU:HD23	2.25	0.56
1:A:92:VAL:O	1:A:96:MET:HE2	2.05	0.56
1:D:148:LEU:HD22	1:D:179:LEU:HD11	1.86	0.56
1:C:10:THR:HB	1:C:57:SER:HB2	1.86	0.56
1:A:6:LEU:HD22	1:A:22:ILE:HD11	1.87	0.56
1:C:41:GLY:HA2	2:C:382:ATP:O2A	2.05	0.56
1:A:4:VAL:O	1:A:5:GLN:HB2	2.06	0.56
1:A:49:ILE:O	1:A:62:ILE:HD11	2.06	0.56
1:A:253:GLN:O	1:A:272:SER:HB2	2.06	0.56
1:A:288:GLU:CG	1:A:330:ARG:HD3	2.28	0.56
1:D:60:LEU:HB3	1:D:68:ASN:ND2	2.21	0.56
1:B:60:LEU:HB3	1:B:68:ASN:ND2	2.21	0.56
1:C:44:THR:O	1:C:48:MET:HG3	2.06	0.56
1:C:203:LYS:HD3	1:C:215:VAL:CG1	2.35	0.56
1:A:10:THR:HB	1:A:57:SER:HB2	1.86	0.55
1:B:68:ASN:N	1:B:68:ASN:ND2	2.52	0.55
1:D:290:LEU:HD13	1:D:345:ILE:HD12	1.89	0.55
1:A:41:GLY:HA2	2:A:382:ATP:O2A	2.05	0.55
1:B:270:VAL:HG22	1:B:362:CYS:O	2.05	0.55
1:B:178:ARG:HA	1:B:181:LYS:HG2	1.89	0.55
1:B:290:LEU:HD13	1:B:345:ILE:HD12	1.88	0.55
1:A:87:TYR:HE1	1:A:98:PHE:CD2	2.25	0.54
1:A:250:ALA:HB3	1:A:253:GLN:HG3	1.89	0.54
1:D:183:LEU:HB3	1:D:185:ARG:HG2	1.89	0.54
1:A:34:PHE:CE2	1:A:188:ILE:HG23	2.43	0.54
1:A:85:ALA:O	1:A:146:ARG:NH2	2.40	0.54
1:A:126:LEU:HD22	1:A:129:ARG:HG3	1.89	0.54

Continued on next page...

Continued from previous page...

Atom-1	Atom-2	Interatomic distance (Å)	Clash overlap (Å)
1:B:183:LEU:HB3	1:B:185:ARG:HG2	1.89	0.54
1:C:8:ASN:HA	1:C:21:ASP:HB2	1.89	0.54
1:D:178:ARG:HA	1:D:181:LYS:HG2	1.89	0.54
1:A:8:ASN:HA	1:A:21:ASP:HB2	1.90	0.54
1:D:236:SER:HB2	1:D:237:PRO:CD	2.20	0.54
1:B:130:LYS:N	1:B:130:LYS:CD	2.70	0.54
1:D:270:VAL:HG13	1:D:271:GLU:N	2.23	0.54
1:A:4:VAL:O	1:A:4:VAL:CG1	2.55	0.54
1:B:126:LEU:HD22	1:B:129:ARG:NH1	2.23	0.54
1:C:126:LEU:HD22	1:C:129:ARG:HG3	1.89	0.54
1:A:83:SER:O	1:A:84:TYR:HB2	2.08	0.53
1:B:81:PHE:CZ	1:B:157:LEU:HD23	2.43	0.53
1:D:81:PHE:CZ	1:D:157:LEU:HD23	2.43	0.53
1:B:130:LYS:H	1:B:130:LYS:CD	2.21	0.53
1:C:275:VAL:HG13	1:C:281:MET:CE	2.39	0.53
2:C:382:ATP:H5'1	1:D:135:SER:HB3	1.90	0.53
1:A:289:HIS:O	1:A:348:PRO:HG2	2.08	0.53
1:B:270:VAL:HG13	1:B:271:GLU:N	2.23	0.53
1:C:34:PHE:CE2	1:C:188:ILE:HG23	2.43	0.53
1:C:45:LEU:HA	1:C:48:MET:HE2	1.90	0.53
1:C:47:ARG:HD2	1:C:52:LEU:HD12	1.91	0.53
1:B:248:ALA:HB1	1:B:267:TRP:HH2	1.73	0.53
1:D:242:LEU:HD12	1:D:242:LEU:N	2.23	0.53
1:C:289:HIS:O	1:C:348:PRO:HG2	2.08	0.53
1:C:327:LEU:HD23	1:C:345:ILE:HD11	1.90	0.53
1:D:5:GLN:HB3	1:D:61:PHE:HB2	1.91	0.53
1:C:110:ILE:C	1:C:112:GLN:N	2.62	0.53
1:C:173:ARG:NE	1:C:196:GLU:HG3	2.23	0.53
1:D:110:ILE:O	1:D:113:ARG:HG2	2.09	0.53
1:A:101:LYS:HG3	1:A:102:LEU:N	2.19	0.53
1:D:126:LEU:HD22	1:D:129:ARG:NH1	2.23	0.53
1:D:130:LYS:H	1:D:130:LYS:CD	2.21	0.53
1:D:351:ARG:NE	1:D:368:GLU:OE2	2.42	0.53
2:A:382:ATP:H5'1	1:B:135:SER:HB3	1.90	0.53
1:D:83:SER:O	1:D:84:TYR:CG	2.60	0.53
1:B:292:PRO:C	1:B:294:ASP:H	2.12	0.52
1:B:117:VAL:HG13	1:B:118:ALA:N	2.24	0.52
1:B:242:LEU:N	1:B:242:LEU:HD12	2.23	0.52
1:A:110:ILE:C	1:A:112:GLN:N	2.62	0.52
1:D:292:PRO:C	1:D:294:ASP:H	2.12	0.52
1:A:34:PHE:HE2	1:A:188:ILE:HG23	1.74	0.52

Continued on next page...

Continued from previous page...

Atom-1	Atom-2	Interatomic distance (Å)	Clash overlap (Å)
1:D:97:SER:HB3	1:D:114:VAL:HG21	1.91	0.52
1:D:117:VAL:O	1:D:120:VAL:HG22	2.10	0.52
1:A:286:ARG:HB3	1:A:288:GLU:OE2	2.10	0.52
1:B:295:ILE:O	1:B:296:ALA:HB2	2.09	0.52
1:A:116:GLN:HE22	1:A:182:ARG:HH12	1.58	0.52
1:C:286:ARG:HB3	1:C:288:GLU:OE2	2.10	0.52
1:A:327:LEU:HD23	1:A:345:ILE:HD11	1.90	0.52
1:C:34:PHE:HE2	1:C:188:ILE:HG23	1.73	0.52
1:B:110:ILE:O	1:B:113:ARG:HG2	2.09	0.52
1:D:148:LEU:HD22	1:D:179:LEU:HD13	1.91	0.52
1:B:97:SER:HB3	1:B:114:VAL:HG21	1.91	0.52
1:C:249:THR:HA	1:C:254:VAL:HA	1.92	0.52
1:D:295:ILE:O	1:D:296:ALA:HB2	2.09	0.52
1:D:321:PRO:O	1:D:322:SER:OG	2.22	0.52
1:B:117:VAL:O	1:B:120:VAL:HG22	2.10	0.52
1:C:101:LYS:HG3	1:C:102:LEU:N	2.19	0.52
1:A:60:LEU:H	1:A:68:ASN:ND2	2.04	0.51
1:C:335:VAL:HG12	1:C:337:VAL:HG23	1.92	0.51
1:D:117:VAL:HG13	1:D:118:ALA:N	2.24	0.51
1:C:80:VAL:O	1:C:80:VAL:HG13	2.10	0.51
1:C:96:MET:HA	1:C:146:ARG:CA	2.38	0.51
1:C:301:GLU:HG3	1:C:344:ALA:HB2	1.91	0.51
1:D:70:THR:HB	1:D:75:ARG:HD3	1.92	0.51
1:A:173:ARG:NE	1:A:196:GLU:HG3	2.23	0.51
1:B:248:ALA:HB3	1:B:255:GLN:HB3	1.93	0.51
1:A:80:VAL:O	1:A:80:VAL:HG13	2.11	0.51
1:A:323:ILE:HD12	1:A:323:ILE:H	1.76	0.51
1:B:11:LYS:HB2	1:B:48:MET:CE	2.39	0.51
1:B:242:LEU:HD11	1:B:327:LEU:HD11	1.93	0.51
1:C:11:LYS:HD3	1:C:54:THR:O	2.11	0.51
1:D:11:LYS:HB2	1:D:48:MET:CE	2.39	0.51
1:B:83:SER:O	1:B:84:TYR:CG	2.62	0.51
1:B:141:ARG:HD2	1:B:164:LEU:CD2	2.41	0.51
1:D:242:LEU:HD11	1:D:327:LEU:HD11	1.93	0.51
1:D:141:ARG:HD2	1:D:164:LEU:CD2	2.41	0.51
1:B:70:THR:HB	1:B:75:ARG:HD3	1.92	0.51
1:B:5:GLN:HB3	1:B:61:PHE:HB2	1.91	0.51
1:C:95:ASN:C	1:C:97:SER:H	2.14	0.51
1:C:280:ASN:O	1:C:357:GLU:HG2	2.11	0.51
1:A:280:ASN:O	1:A:357:GLU:HG2	2.11	0.50
1:B:293:SER:HB3	1:B:345:ILE:HA	1.93	0.50

Continued on next page...

Continued from previous page...

Atom-1	Atom-2	Interatomic distance (Å)	Clash overlap (Å)
1:D:81:PHE:HE2	1:D:156:LEU:O	1.94	0.50
1:D:159:GLU:N	1:D:160:PRO:CD	2.74	0.50
1:A:251:ILE:N	1:A:251:ILE:HD12	2.26	0.50
1:A:335:VAL:HG12	1:A:337:VAL:HG23	1.92	0.50
1:A:358:ASP:OD1	1:A:360:THR:HG23	2.12	0.50
1:B:148:LEU:HD22	1:B:179:LEU:HD13	1.92	0.50
1:B:297:ASP:O	1:B:299:ILE:HG13	2.12	0.50
1:C:323:ILE:HD12	1:C:323:ILE:H	1.76	0.50
1:A:92:VAL:HG12	1:A:96:MET:HE2	1.92	0.50
1:C:23:ASN:N	1:C:23:ASN:HD22	2.09	0.50
1:C:144:ILE:HD11	1:C:160:PRO:O	2.12	0.50
1:D:293:SER:HB3	1:D:345:ILE:HA	1.93	0.50
1:A:236:SER:OG	1:A:237:PRO:HD3	2.08	0.50
1:B:81:PHE:HE2	1:B:156:LEU:O	1.94	0.50
1:B:84:TYR:O	1:B:84:TYR:CG	2.65	0.50
1:D:84:TYR:O	1:D:84:TYR:CG	2.64	0.50
1:B:159:GLU:N	1:B:160:PRO:CD	2.74	0.50
1:C:116:GLN:HE22	1:C:182:ARG:HH12	1.58	0.50
1:D:30:GLU:HG2	1:D:202:ASP:OD2	2.12	0.50
1:B:20:LYS:HG3	1:B:21:ASP:N	2.21	0.50
1:B:29:GLY:HA2	1:B:185:ARG:O	2.12	0.50
1:A:68:ASN:H	1:A:68:ASN:ND2	2.06	0.49
1:C:4:VAL:O	1:C:4:VAL:CG1	2.60	0.49
1:A:11:LYS:HD3	1:A:54:THR:O	2.11	0.49
1:D:132:LYS:O	1:D:132:LYS:HG2	2.13	0.49
1:D:351:ARG:HG3	1:D:351:ARG:HH11	1.77	0.49
1:A:96:MET:HA	1:A:146:ARG:CA	2.39	0.49
1:B:51:GLY:HA3	1:B:72:PRO:HG3	1.94	0.49
1:C:5:GLN:C	1:C:6:LEU:HD12	2.32	0.49
1:B:351:ARG:HG3	1:B:351:ARG:HH11	1.77	0.49
1:C:92:VAL:HG12	1:C:96:MET:HE2	1.95	0.49
1:C:260:MET:SD	1:C:300:LEU:HD22	2.52	0.49
1:A:260:MET:SD	1:A:300:LEU:HD22	2.52	0.49
1:A:23:ASN:N	1:A:23:ASN:HD22	2.09	0.49
1:B:252:ASP:HB3	1:B:365:LEU:CD1	2.43	0.49
1:D:29:GLY:HA2	1:D:185:ARG:O	2.12	0.49
1:D:20:LYS:HG3	1:D:21:ASP:N	2.21	0.49
1:D:51:GLY:HA3	1:D:72:PRO:HG3	1.94	0.49
1:D:92:VAL:CG2	1:D:134:LEU:HD11	2.42	0.49
1:B:86:LEU:HA	1:B:146:ARG:NH2	2.25	0.49
1:B:306:VAL:HB	1:B:317:HIS:CG	2.48	0.49

Continued on next page...

Continued from previous page...

Atom-1	Atom-2	Interatomic distance (Å)	Clash overlap (Å)
1:A:214:GLN:HG2	1:A:221:LEU:HD21	1.94	0.49
1:C:60:LEU:H	1:C:68:ASN:ND2	2.10	0.49
1:C:275:VAL:HG13	1:C:281:MET:HE1	1.94	0.49
1:A:144:ILE:HD11	1:A:160:PRO:O	2.12	0.48
1:A:275:VAL:HG13	1:A:281:MET:CE	2.43	0.48
1:B:92:VAL:CG2	1:B:134:LEU:HD11	2.42	0.48
1:D:96:MET:CE	1:D:117:VAL:HG13	2.43	0.48
1:A:252:ASP:HB3	1:A:365:LEU:CD1	2.43	0.48
1:B:132:LYS:O	1:B:132:LYS:HG2	2.13	0.48
1:D:40:CYS:SG	1:D:42:LYS:HG3	2.53	0.48
1:D:135:SER:N	1:D:138:GLN:HE21	2.01	0.48
1:D:297:ASP:O	1:D:299:ILE:HG13	2.12	0.48
1:D:306:VAL:HB	1:D:317:HIS:CG	2.48	0.48
1:C:253:GLN:O	1:C:254:VAL:CG2	2.61	0.48
1:A:301:GLU:HG3	1:A:344:ALA:HB2	1.96	0.48
1:B:96:MET:CE	1:B:117:VAL:HG13	2.43	0.48
1:D:253:GLN:O	1:D:254:VAL:HB	2.13	0.48
1:A:5:GLN:C	1:A:6:LEU:HD12	2.34	0.48
1:C:214:GLN:HG2	1:C:221:LEU:HD21	1.94	0.48
1:C:358:ASP:OD1	1:C:360:THR:HG23	2.13	0.48
1:D:240:ASN:HB2	1:D:285:ILE:O	2.13	0.48
1:A:84:TYR:HE1	1:A:140:GLN:HG3	1.79	0.48
1:B:77:VAL:CG1	1:B:78:GLY:N	2.77	0.48
1:C:109:VAL:HG13	1:C:110:ILE:N	2.29	0.48
1:C:224:TYR:CD1	1:C:363:ARG:NH2	2.81	0.48
1:B:40:CYS:SG	1:B:42:LYS:HG3	2.53	0.48
1:D:77:VAL:CG1	1:D:78:GLY:N	2.77	0.48
1:A:140:GLN:HE21	1:A:160:PRO:C	2.18	0.48
1:A:358:ASP:OD1	1:A:358:ASP:C	2.53	0.48
1:C:113:ARG:HA	1:C:116:GLN:HG3	1.96	0.48
1:A:145:GLY:O	1:A:149:VAL:HG23	2.14	0.48
1:A:307:VAL:HG13	1:A:316:ILE:CD1	2.44	0.48
1:C:140:GLN:HE21	1:C:160:PRO:C	2.18	0.48
1:C:307:VAL:HG13	1:C:316:ILE:CD1	2.44	0.48
1:D:151:GLU:O	1:D:185:ARG:NH1	2.46	0.48
1:D:83:SER:C	1:D:84:TYR:CD2	2.86	0.47
1:D:151:GLU:N	1:D:152:PRO:HD3	2.29	0.47
1:C:145:GLY:O	1:C:149:VAL:HG23	2.14	0.47
1:D:253:GLN:OE1	1:D:267:TRP:CE3	2.68	0.47
1:A:251:ILE:H	1:A:251:ILE:CD1	2.27	0.47
1:A:338:GLU:O	1:A:340:GLY:N	2.47	0.47

Continued on next page...

Continued from previous page...

Atom-1	Atom-2	Interatomic distance (Å)	Clash overlap (Å)
1:B:135:SER:N	1:B:138:GLN:HE21	2.01	0.47
1:C:33:VAL:HG12	1:C:189:TYR:HB3	1.96	0.47
1:C:83:SER:O	1:C:84:TYR:HB2	2.14	0.47
1:D:46:LEU:HD11	1:D:156:LEU:HB3	1.97	0.47
1:D:77:VAL:HG12	1:D:78:GLY:N	2.29	0.47
1:B:151:GLU:N	1:B:152:PRO:HD3	2.29	0.47
1:B:152:PRO:O	1:B:185:ARG:NH1	2.48	0.47
1:C:283:LEU:HD23	1:C:283:LEU:C	2.34	0.47
1:A:253:GLN:O	1:A:254:VAL:CB	2.62	0.47
1:A:283:LEU:C	1:A:283:LEU:HD23	2.34	0.47
1:B:77:VAL:HG12	1:B:78:GLY:N	2.29	0.47
1:B:47:ARG:HG2	1:B:47:ARG:HH11	1.79	0.47
1:C:247:THR:CG2	1:C:257:GLU:HB2	2.45	0.47
1:C:346:GLY:O	1:C:348:PRO:HD3	2.15	0.47
1:A:113:ARG:HA	1:A:116:GLN:HG3	1.96	0.47
1:B:60:LEU:N	1:B:68:ASN:HD21	2.10	0.47
1:C:49:ILE:O	1:C:62:ILE:HD11	2.15	0.47
1:C:338:GLU:O	1:C:340:GLY:N	2.47	0.47
1:A:68:ASN:N	1:A:68:ASN:ND2	2.62	0.47
1:A:251:ILE:HD12	1:A:251:ILE:H	1.80	0.47
2:A:382:ATP:C5'	1:B:135:SER:HB3	2.45	0.47
1:B:46:LEU:HD11	1:B:156:LEU:HB3	1.97	0.47
1:B:48:MET:HE3	1:B:55:ILE:HA	1.96	0.47
1:B:178:ARG:HG2	1:B:181:LYS:HE2	1.97	0.47
1:D:47:ARG:HH11	1:D:47:ARG:HG2	1.79	0.47
1:A:109:VAL:HG13	1:A:110:ILE:N	2.29	0.46
1:B:240:ASN:HB2	1:B:285:ILE:O	2.14	0.46
1:C:6:LEU:CD2	1:C:22:ILE:HD11	2.44	0.46
1:C:6:LEU:HB3	1:C:9:VAL:HG21	1.97	0.46
1:A:50:ALA:O	1:A:75:ARG:HD2	2.15	0.46
1:B:91:SER:H	1:B:94:GLU:HB2	1.81	0.46
1:D:60:LEU:N	1:D:68:ASN:HD21	2.10	0.46
1:D:248:ALA:HB3	1:D:255:GLN:HB3	1.97	0.46
1:A:236:SER:O	1:A:237:PRO:C	2.53	0.46
1:A:247:THR:CG2	1:A:257:GLU:HB2	2.45	0.46
1:C:358:ASP:OD1	1:C:358:ASP:C	2.53	0.46
1:D:178:ARG:HG2	1:D:181:LYS:HE2	1.97	0.46
1:A:92:VAL:HG12	1:A:96:MET:CE	2.46	0.46
1:B:154:VAL:HG22	1:B:186:THR:HB	1.97	0.46
1:B:283:LEU:C	1:B:283:LEU:CD2	2.83	0.46
1:B:351:ARG:NE	1:B:368:GLU:OE2	2.48	0.46

Continued on next page...

Continued from previous page...

Atom-1	Atom-2	Interatomic distance (Å)	Clash overlap (Å)
1:C:77:VAL:HG13	1:C:156:LEU:HG	1.98	0.46
1:C:137:GLY:O	1:C:141:ARG:HD3	2.16	0.46
1:A:33:VAL:HG12	1:A:189:TYR:HB3	1.96	0.46
1:A:235:GLY:O	1:A:236:SER:O	2.34	0.46
1:B:102:LEU:O	1:B:103:ALA:HB3	2.16	0.46
1:A:95:ASN:C	1:A:97:SER:H	2.19	0.46
1:B:92:VAL:HG22	1:B:134:LEU:HD11	1.98	0.46
1:B:300:LEU:HB3	1:B:320:ILE:HD13	1.98	0.46
1:A:148:LEU:CD2	1:A:179:LEU:HD22	2.46	0.46
1:A:152:PRO:O	1:A:185:ARG:NH1	2.47	0.46
1:B:51:GLY:O	1:B:52:LEU:HB2	2.16	0.46
1:D:82:GLN:HA	1:D:140:GLN:CD	2.36	0.46
1:C:11:LYS:O	1:C:18:VAL:HG12	2.15	0.45
1:D:48:MET:HE3	1:D:55:ILE:HA	1.98	0.45
1:D:154:VAL:HG22	1:D:186:THR:HB	1.97	0.45
1:A:11:LYS:O	1:A:18:VAL:HG12	2.15	0.45
1:D:92:VAL:HG22	1:D:134:LEU:HD11	1.98	0.45
1:A:110:ILE:O	1:A:111:ASN:HB3	2.17	0.45
1:A:254:VAL:CG2	1:A:272:SER:HA	2.47	0.45
1:C:148:LEU:CD2	1:C:179:LEU:HD22	2.46	0.45
2:C:382:ATP:C5'	1:D:135:SER:HB3	2.45	0.45
1:A:81:PHE:CE1	1:A:83:SER:HB2	2.51	0.45
1:A:315:GLN:C	1:A:316:ILE:HD13	2.37	0.45
1:C:110:ILE:O	1:C:111:ASN:HB3	2.17	0.45
1:D:41:GLY:O	1:D:45:LEU:HB2	2.17	0.45
1:D:51:GLY:O	1:D:52:LEU:HB2	2.16	0.45
1:D:91:SER:H	1:D:94:GLU:HB2	1.81	0.45
1:D:302:GLY:HA3	1:D:319:GLN:O	2.16	0.45
1:B:41:GLY:O	1:B:45:LEU:HB2	2.17	0.45
1:B:137:GLY:O	1:B:141:ARG:HD3	2.16	0.45
1:B:283:LEU:HD23	1:B:284:GLY:N	2.31	0.45
1:B:302:GLY:HA3	1:B:319:GLN:O	2.16	0.45
1:A:137:GLY:O	1:A:141:ARG:HD3	2.16	0.45
1:A:85:ALA:HB1	1:A:146:ARG:HH12	1.79	0.45
1:A:95:ASN:O	1:A:96:MET:CB	2.59	0.45
1:A:102:LEU:C	1:A:104:GLY:H	2.20	0.45
1:C:251:ILE:HD12	1:C:251:ILE:N	2.32	0.45
1:C:315:GLN:C	1:C:316:ILE:HD13	2.37	0.45
1:D:239:MET:HE3	1:D:286:ARG:CZ	2.47	0.45
1:D:291:LEU:HD11	1:D:348:PRO:HB3	1.99	0.45
1:A:107:LYS:HA	1:A:110:ILE:CG2	2.46	0.45

Continued on next page...

Continued from previous page...

Atom-1	Atom-2	Interatomic distance (Å)	Clash overlap (Å)
1:A:254:VAL:HG23	1:A:272:SER:HB2	1.99	0.45
1:B:87:TYR:HB3	1:B:89:HIS:CE1	2.52	0.45
1:C:107:LYS:HA	1:C:110:ILE:CG2	2.47	0.45
1:D:283:LEU:HD23	1:D:284:GLY:N	2.31	0.45
1:D:320:ILE:HG23	1:D:321:PRO:HD2	1.99	0.45
1:A:77:VAL:HG13	1:A:156:LEU:HG	1.98	0.45
1:C:102:LEU:C	1:C:104:GLY:H	2.20	0.45
1:D:137:GLY:O	1:D:141:ARG:HD3	2.16	0.45
1:D:152:PRO:O	1:D:185:ARG:NH1	2.48	0.45
1:D:300:LEU:HB3	1:D:320:ILE:HD13	1.98	0.45
1:B:253:GLN:HB3	1:B:267:TRP:CE3	2.52	0.45
1:D:46:LEU:HD23	1:D:158:ASP:HB2	1.99	0.45
1:B:151:GLU:O	1:B:185:ARG:NH1	2.46	0.44
1:C:6:LEU:HB3	1:C:9:VAL:CG2	2.47	0.44
1:C:152:PRO:O	1:C:185:ARG:NH1	2.47	0.44
1:C:297:ASP:OD1	1:C:297:ASP:N	2.50	0.44
1:C:84:TYR:HE1	1:C:140:GLN:HG3	1.81	0.44
1:D:102:LEU:O	1:D:103:ALA:HB3	2.16	0.44
1:D:86:LEU:HA	1:D:146:ARG:NH2	2.25	0.44
1:A:151:GLU:O	1:A:185:ARG:NH1	2.51	0.44
1:A:18:VAL:HG22	1:A:18:VAL:O	2.17	0.44
1:A:49:ILE:HA	1:A:60:LEU:HD21	1.98	0.44
1:A:87:TYR:CE1	1:A:98:PHE:CD2	3.06	0.44
1:B:321:PRO:O	1:B:322:SER:OG	2.22	0.44
1:C:101:LYS:HZ1	1:C:102:LEU:HG	1.80	0.44
1:A:236:SER:HG	1:A:237:PRO:CD	2.19	0.44
1:B:82:GLN:HA	1:B:140:GLN:CD	2.36	0.44
1:D:283:LEU:C	1:D:283:LEU:CD2	2.83	0.44
1:A:260:MET:CE	1:A:323:ILE:HD11	2.48	0.44
1:B:33:VAL:HG13	1:B:201:ALA:HB2	1.98	0.44
1:B:157:LEU:HD11	1:B:187:MET:CE	2.48	0.44
1:B:347:LEU:O	1:B:347:LEU:HD13	2.18	0.44
1:A:17:VAL:HG11	1:A:20:LYS:HD2	2.00	0.44
1:B:253:GLN:O	1:B:254:VAL:CG2	2.66	0.44
1:B:291:LEU:HD11	1:B:348:PRO:HB3	1.99	0.44
1:C:151:GLU:O	1:C:185:ARG:NH1	2.51	0.44
1:C:162:SER:O	1:C:163:ASN:HB2	2.18	0.44
1:D:157:LEU:HD11	1:D:187:MET:CE	2.48	0.44
1:A:207:LEU:HD12	1:A:207:LEU:N	2.34	0.43
1:C:159:GLU:N	1:C:160:PRO:CD	2.81	0.43
1:C:260:MET:CE	1:C:323:ILE:HD11	2.48	0.43

Continued on next page...

Continued from previous page...

Atom-1	Atom-2	Interatomic distance (Å)	Clash overlap (Å)
1:A:121:LEU:O	1:A:123:LEU:HD22	2.19	0.43
1:A:259:PRO:HD2	1:A:260:MET:HE2	1.99	0.43
1:B:320:ILE:HG23	1:B:321:PRO:HD2	1.99	0.43
1:C:45:LEU:HA	1:C:48:MET:HE3	2.00	0.43
1:C:49:ILE:HA	1:C:60:LEU:HD21	1.99	0.43
1:C:135:SER:HB3	2:D:382:ATP:O5'	2.18	0.43
1:D:237:PRO:O	1:D:238:LYS:O	2.35	0.43
1:D:347:LEU:HD13	1:D:347:LEU:O	2.18	0.43
1:A:159:GLU:N	1:A:160:PRO:CD	2.81	0.43
1:B:208:ASP:HB2	1:B:229:PHE:CZ	2.53	0.43
1:C:121:LEU:O	1:C:123:LEU:HD22	2.18	0.43
1:D:26:ILE:HG23	1:D:32:VAL:HG21	2.00	0.43
1:A:260:MET:HE2	1:A:260:MET:N	2.33	0.43
1:C:259:PRO:HB2	1:C:322:SER:HB3	2.00	0.43
1:C:350:GLU:H	1:C:350:GLU:HG3	1.48	0.43
1:A:162:SER:O	1:A:163:ASN:HB2	2.18	0.43
1:A:346:GLY:O	1:A:348:PRO:HD3	2.18	0.43
1:B:235:GLY:O	1:B:236:SER:O	2.37	0.43
1:B:270:VAL:CG1	1:B:362:CYS:HB3	2.46	0.43
1:C:260:MET:N	1:C:260:MET:HE2	2.32	0.43
1:D:86:LEU:O	1:D:88:PRO:HD3	2.19	0.43
1:D:87:TYR:HB3	1:D:89:HIS:CE1	2.53	0.43
1:D:253:GLN:HB3	1:D:267:TRP:HE3	1.84	0.43
1:C:18:VAL:HG22	1:C:18:VAL:O	2.17	0.43
1:C:207:LEU:HD12	1:C:207:LEU:N	2.34	0.43
1:C:259:PRO:HD2	1:C:260:MET:HE2	2.01	0.43
1:B:46:LEU:HD23	1:B:158:ASP:HB2	1.99	0.43
1:C:6:LEU:HD12	1:C:6:LEU:N	2.34	0.43
1:C:120:VAL:HG23	1:C:121:LEU:N	2.34	0.43
1:A:10:THR:HA	1:A:19:SER:O	2.19	0.43
1:A:86:LEU:HD12	1:A:139:ARG:HB3	2.00	0.43
1:C:87:TYR:HB3	1:C:89:HIS:CE1	2.54	0.43
1:A:120:VAL:HG23	1:A:121:LEU:N	2.34	0.42
1:A:253:GLN:HB3	1:A:267:TRP:CE3	2.54	0.42
1:D:66:ARG:HG3	1:D:68:ASN:ND2	2.34	0.42
1:A:59:ASP:HB2	1:A:61:PHE:HE1	1.84	0.42
1:A:135:SER:HB3	2:B:382:ATP:O5'	2.18	0.42
1:A:289:HIS:O	1:A:348:PRO:CG	2.67	0.42
1:B:126:LEU:O	1:B:129:ARG:HB2	2.20	0.42
1:B:350:GLU:H	1:B:350:GLU:CD	2.17	0.42
1:C:17:VAL:HG11	1:C:20:LYS:HD2	2.00	0.42

Continued on next page...

Continued from previous page...

Atom-1	Atom-2	Interatomic distance (Å)	Clash overlap (Å)
1:D:126:LEU:O	1:D:129:ARG:HB2	2.20	0.42
1:A:106:LYS:O	1:A:110:ILE:HG22	2.19	0.42
1:A:107:LYS:HA	1:A:110:ILE:HG22	2.02	0.42
1:B:117:VAL:HG11	1:B:149:VAL:CG2	2.49	0.42
1:B:253:GLN:O	1:B:254:VAL:HG23	2.19	0.42
1:C:107:LYS:HA	1:C:110:ILE:HG22	2.02	0.42
1:D:47:ARG:HG2	1:D:47:ARG:NH1	2.35	0.42
1:A:15:GLU:O	1:A:15:GLU:HG3	2.20	0.42
1:A:101:LYS:HZ3	1:A:102:LEU:CG	2.30	0.42
1:C:260:MET:HE1	1:C:323:ILE:HD11	2.00	0.42
1:B:26:ILE:HG23	1:B:32:VAL:HG21	2.00	0.42
1:C:24:LEU:HD11	1:C:34:PHE:HE1	1.85	0.42
1:C:321:PRO:O	1:C:322:SER:OG	2.30	0.42
1:D:208:ASP:HB2	1:D:229:PHE:CZ	2.54	0.42
1:D:364:ARG:NH2	1:D:368:GLU:HG3	2.35	0.42
1:A:113:ARG:HA	1:A:116:GLN:CG	2.50	0.42
1:A:135:SER:HB3	2:B:382:ATP:C5'	2.50	0.42
1:B:47:ARG:HG2	1:B:47:ARG:NH1	2.35	0.42
1:C:10:THR:HA	1:C:19:SER:O	2.19	0.42
1:C:135:SER:HB3	2:D:382:ATP:C5'	2.50	0.42
1:D:109:VAL:HG22	1:D:109:VAL:O	2.20	0.42
1:A:24:LEU:HD11	1:A:34:PHE:HE1	1.85	0.42
1:A:259:PRO:HB2	1:A:322:SER:HB3	2.00	0.42
1:B:290:LEU:HB2	1:B:329:TYR:HD1	1.85	0.42
1:D:290:LEU:HB2	1:D:329:TYR:HD1	1.85	0.42
1:B:306:VAL:HG12	1:B:307:VAL:N	2.35	0.42
1:C:106:LYS:O	1:C:110:ILE:HG22	2.19	0.42
1:D:157:LEU:HD11	1:D:187:MET:HE2	2.02	0.42
1:C:113:ARG:HA	1:C:116:GLN:CG	2.50	0.42
1:D:117:VAL:HG11	1:D:149:VAL:CG2	2.49	0.42
1:B:66:ARG:HG3	1:B:68:ASN:ND2	2.34	0.41
1:B:83:SER:C	1:B:84:TYR:CD2	2.89	0.41
1:B:81:PHE:CE2	1:B:156:LEU:O	2.73	0.41
1:B:240:ASN:O	1:B:284:GLY:HA2	2.20	0.41
1:C:289:HIS:O	1:C:348:PRO:CG	2.68	0.41
1:A:270:VAL:HG13	1:A:362:CYS:HB3	2.03	0.41
1:B:109:VAL:HG22	1:B:109:VAL:O	2.20	0.41
1:C:59:ASP:HB2	1:C:61:PHE:HE1	1.84	0.41
1:D:202:ASP:OD2	1:D:202:ASP:C	2.58	0.41
1:C:12:ALA:HB2	1:C:17:VAL:HA	2.03	0.41
1:D:309:GLN:NE2	1:D:309:GLN:HA	2.35	0.41

Continued on next page...

Continued from previous page...

Atom-1	Atom-2	Interatomic distance (Å)	Clash overlap (Å)
1:D:362:CYS:O	1:D:363:ARG:C	2.58	0.41
1:A:134:LEU:HD22	1:A:138:GLN:NE2	2.36	0.41
1:B:306:VAL:HB	1:B:317:HIS:HB2	2.01	0.41
1:C:46:LEU:HD11	1:C:188:ILE:HG22	2.03	0.41
1:C:84:TYR:O	1:C:85:ALA:CB	2.69	0.41
1:D:300:LEU:HD12	1:D:300:LEU:N	2.35	0.41
1:C:11:LYS:HG3	1:C:18:VAL:CG1	2.51	0.41
1:D:70:THR:HB	1:D:75:ARG:CD	2.51	0.41
1:D:306:VAL:HB	1:D:317:HIS:HB2	2.01	0.41
1:B:51:GLY:C	1:B:53:GLU:H	2.24	0.41
1:B:11:LYS:HB2	1:B:48:MET:SD	2.61	0.41
1:B:300:LEU:HD12	1:B:300:LEU:N	2.35	0.41
1:C:166:ALA:O	1:C:170:VAL:HG23	2.21	0.41
1:C:228:ARG:HG2	1:C:228:ARG:NH1	2.35	0.41
1:D:240:ASN:O	1:D:284:GLY:HA2	2.20	0.41
1:A:12:ALA:HB2	1:A:17:VAL:HA	2.03	0.41
1:A:166:ALA:O	1:A:170:VAL:HG23	2.21	0.41
1:A:318:ILE:HD12	1:A:345:ILE:HD13	2.03	0.41
1:B:296:ALA:O	1:B:297:ASP:HB2	2.21	0.41
1:B:309:GLN:HA	1:B:309:GLN:NE2	2.35	0.41
1:C:12:ALA:CB	1:C:17:VAL:HA	2.51	0.41
1:C:15:GLU:O	1:C:15:GLU:HG3	2.20	0.41
1:C:92:VAL:HG12	1:C:96:MET:CE	2.50	0.41
1:C:253:GLN:HB3	1:C:267:TRP:HE3	1.86	0.41
1:D:110:ILE:C	1:D:110:ILE:HD12	2.41	0.41
1:D:202:ASP:O	1:D:203:LYS:HB2	2.21	0.41
1:D:236:SER:O	1:D:237:PRO:C	2.59	0.41
1:D:306:VAL:HG12	1:D:307:VAL:N	2.35	0.41
1:D:321:PRO:O	1:D:322:SER:CB	2.69	0.41
1:C:65:LYS:O	1:C:67:MET:HG3	2.21	0.41
1:C:130:LYS:O	1:C:131:PRO:C	2.60	0.41
1:D:51:GLY:C	1:D:53:GLU:H	2.24	0.41
1:D:235:GLY:O	1:D:236:SER:O	2.39	0.41
1:A:101:LYS:NZ	1:A:102:LEU:CG	2.82	0.40
1:B:46:LEU:CD2	1:B:158:ASP:HB2	2.51	0.40
1:D:33:VAL:CG1	1:D:201:ALA:HB2	2.47	0.40
1:B:4:VAL:O	1:B:26:ILE:O	2.40	0.40
1:B:110:ILE:HD12	1:B:110:ILE:C	2.41	0.40
1:C:173:ARG:HE	1:C:196:GLU:CG	2.31	0.40
1:C:260:MET:HE2	1:C:260:MET:H	1.86	0.40
1:C:318:ILE:HD12	1:C:345:ILE:HD13	2.03	0.40

Continued on next page...

Continued from previous page...

Atom-1	Atom-2	Interatomic distance (Å)	Clash overlap (Å)
1:A:305:GLN:O	1:A:339:GLU:HG3	2.22	0.40
1:D:62:ILE:O	1:D:67:MET:HE3	2.21	0.40
1:B:70:THR:HB	1:B:75:ARG:CD	2.51	0.40
1:C:11:LYS:HG3	1:C:18:VAL:HG12	2.03	0.40
1:D:305:GLN:HG3	1:D:326:ASN:OD1	2.21	0.40
1:A:12:ALA:CB	1:A:17:VAL:HA	2.51	0.40
1:A:20:LYS:O	1:A:21:ASP:C	2.60	0.40
1:A:46:LEU:HD11	1:A:188:ILE:HG22	2.02	0.40
1:A:130:LYS:O	1:A:131:PRO:C	2.60	0.40
1:A:173:ARG:HE	1:A:196:GLU:CG	2.31	0.40
1:A:260:MET:HE2	1:A:260:MET:H	1.86	0.40
1:B:255:GLN:HB2	1:B:267:TRP:CE2	2.56	0.40
1:C:95:ASN:O	1:C:96:MET:CB	2.61	0.40
1:D:296:ALA:O	1:D:297:ASP:HB2	2.21	0.40

All (1) symmetry-related close contacts are listed below. The label for Atom-2 includes the symmetry operator and encoded unit-cell translations to be applied.

Atom-1	Atom-2	Interatomic distance (Å)	Clash overlap (Å)
1:B:253:GLN:NE2	1:C:85:ALA:CB[1_554]	2.02	0.18

5.3 Torsion angles [i](#)

5.3.1 Protein backbone [i](#)

In the following table, the Percentiles column shows the percent Ramachandran outliers of the chain as a percentile score with respect to all X-ray entries followed by that with respect to entries of similar resolution.

The Analysed column shows the number of residues for which the backbone conformation was analysed, and the total number of residues.

Mol	Chain	Analysed	Favoured	Allowed	Outliers	Percentiles	
1	A	365/381 (96%)	307 (84%)	47 (13%)	11 (3%)	4	7
1	B	365/381 (96%)	305 (84%)	41 (11%)	19 (5%)	2	2
1	C	365/381 (96%)	304 (83%)	52 (14%)	9 (2%)	5	9
1	D	365/381 (96%)	306 (84%)	42 (12%)	17 (5%)	2	2
All	All	1460/1524 (96%)	1222 (84%)	182 (12%)	56 (4%)	3	4

All (56) Ramachandran outliers are listed below:

Mol	Chain	Res	Type
1	A	236	SER
1	A	254	VAL
1	A	322	SER
1	B	73	ALA
1	B	83	SER
1	B	203	LYS
1	B	236	SER
1	B	238	LYS
1	B	324	ARG
1	C	85	ALA
1	C	236	SER
1	C	254	VAL
1	C	322	SER
1	D	73	ALA
1	D	83	SER
1	D	236	SER
1	D	238	LYS
1	D	254	VAL
1	D	324	ARG
1	A	21	ASP
1	A	107	LYS
1	A	251	ILE
1	A	339	GLU
1	B	66	ARG
1	B	107	LYS
1	B	254	VAL
1	B	295	ILE
1	C	21	ASP
1	C	107	LYS
1	C	339	GLU
1	D	66	ARG
1	D	107	LYS
1	D	203	LYS
1	D	295	ILE
1	A	5	GLN
1	A	85	ALA
1	B	64	GLU
1	B	82	GLN
1	B	296	ALA
1	D	64	GLU
1	D	82	GLN
1	D	296	ALA

Continued on next page...

Continued from previous page...

Mol	Chain	Res	Type
1	B	80	VAL
1	D	80	VAL
1	D	363	ARG
1	B	84	TYR
1	B	152	PRO
1	B	363	ARG
1	C	298	VAL
1	D	152	PRO
1	A	298	VAL
1	B	85	ALA
1	B	237	PRO
1	D	237	PRO
1	A	295	ILE
1	C	295	ILE

5.3.2 Protein sidechains [i](#)

In the following table, the Percentiles column shows the percent sidechain outliers of the chain as a percentile score with respect to all X-ray entries followed by that with respect to entries of similar resolution.

The Analysed column shows the number of residues for which the sidechain conformation was analysed, and the total number of residues.

Mol	Chain	Analysed	Rotameric	Outliers	Percentiles	
1	A	312/323 (97%)	298 (96%)	14 (4%)	27	52
1	B	312/323 (97%)	296 (95%)	16 (5%)	24	46
1	C	312/323 (97%)	296 (95%)	16 (5%)	24	46
1	D	312/323 (97%)	296 (95%)	16 (5%)	24	46
All	All	1248/1292 (97%)	1186 (95%)	62 (5%)	24	47

All (62) residues with a non-rotameric sidechain are listed below:

Mol	Chain	Res	Type
1	A	31	PHE
1	A	53	GLU
1	A	68	ASN
1	A	81	PHE
1	A	82	GLN
1	A	116	GLN
1	A	129	ARG

Continued on next page...

Continued from previous page...

Mol	Chain	Res	Type
1	A	219	LEU
1	A	266	VAL
1	A	274	ASP
1	A	288	GLU
1	A	342	THR
1	A	350	GLU
1	A	367	LYS
1	B	10	THR
1	B	25	ASP
1	B	31	PHE
1	B	33	VAL
1	B	68	ASN
1	B	79	MET
1	B	83	SER
1	B	98	PHE
1	B	113	ARG
1	B	116	GLN
1	B	123	LEU
1	B	130	LYS
1	B	288	GLU
1	B	293	SER
1	B	298	VAL
1	B	350	GLU
1	C	31	PHE
1	C	53	GLU
1	C	68	ASN
1	C	81	PHE
1	C	82	GLN
1	C	116	GLN
1	C	129	ARG
1	C	219	LEU
1	C	249	THR
1	C	266	VAL
1	C	274	ASP
1	C	288	GLU
1	C	297	ASP
1	C	342	THR
1	C	350	GLU
1	C	367	LYS
1	D	10	THR
1	D	25	ASP
1	D	31	PHE

Continued on next page...

Continued from previous page...

Mol	Chain	Res	Type
1	D	33	VAL
1	D	68	ASN
1	D	79	MET
1	D	83	SER
1	D	98	PHE
1	D	113	ARG
1	D	116	GLN
1	D	123	LEU
1	D	130	LYS
1	D	288	GLU
1	D	293	SER
1	D	298	VAL
1	D	350	GLU

Sometimes sidechains can be flipped to improve hydrogen bonding and reduce clashes. All (35) such sidechains are listed below:

Mol	Chain	Res	Type
1	A	23	ASN
1	A	68	ASN
1	A	82	GLN
1	A	253	GLN
1	A	255	GLN
1	A	276	GLN
1	A	309	GLN
1	B	7	GLN
1	B	68	ASN
1	B	82	GLN
1	B	95	ASN
1	B	138	GLN
1	B	163	ASN
1	B	180	HIS
1	B	264	GLN
1	B	309	GLN
1	B	325	GLN
1	B	331	GLN
1	C	23	ASN
1	C	68	ASN
1	C	82	GLN
1	C	255	GLN
1	C	309	GLN
1	D	7	GLN
1	D	68	ASN

Continued on next page...

Continued from previous page...

Mol	Chain	Res	Type
1	D	82	GLN
1	D	95	ASN
1	D	138	GLN
1	D	163	ASN
1	D	180	HIS
1	D	264	GLN
1	D	309	GLN
1	D	325	GLN
1	D	331	GLN
1	D	366	HIS

5.3.3 RNA [i](#)

There are no RNA molecules in this entry.

5.4 Non-standard residues in protein, DNA, RNA chains [i](#)

There are no non-standard protein/DNA/RNA residues in this entry.

5.5 Carbohydrates [i](#)

There are no monosaccharides in this entry.

5.6 Ligand geometry [i](#)

4 ligands are modelled in this entry.

In the following table, the Counts columns list the number of bonds (or angles) for which Mogul statistics could be retrieved, the number of bonds (or angles) that are observed in the model and the number of bonds (or angles) that are defined in the Chemical Component Dictionary. The Link column lists molecule types, if any, to which the group is linked. The Z score for a bond length (or angle) is the number of standard deviations the observed value is removed from the expected value. A bond length (or angle) with $|Z| > 2$ is considered an outlier worth inspection. RMSZ is the root-mean-square of all Z scores of the bond lengths (or angles).

Mol	Type	Chain	Res	Link	Bond lengths			Bond angles		
					Counts	RMSZ	# $ Z > 2$	Counts	RMSZ	# $ Z > 2$
2	ATP	C	382	-	26,33,33	2.19	8 (30%)	31,52,52	3.27	10 (32%)
2	ATP	D	382	-	26,33,33	2.25	9 (34%)	31,52,52	3.30	8 (25%)
2	ATP	A	382	-	26,33,33	2.19	8 (30%)	31,52,52	3.27	10 (32%)

Mol	Type	Chain	Res	Link	Bond lengths			Bond angles		
					Counts	RMSZ	# Z > 2	Counts	RMSZ	# Z > 2
2	ATP	B	382	-	26,33,33	2.26	9 (34%)	31,52,52	3.29	8 (25%)

In the following table, the Chirals column lists the number of chiral outliers, the number of chiral centers analysed, the number of these observed in the model and the number defined in the Chemical Component Dictionary. Similar counts are reported in the Torsion and Rings columns. '-' means no outliers of that kind were identified.

Mol	Type	Chain	Res	Link	Chirals	Torsions	Rings
2	ATP	C	382	-	-	2/18/38/38	0/3/3/3
2	ATP	D	382	-	-	2/18/38/38	0/3/3/3
2	ATP	A	382	-	-	2/18/38/38	0/3/3/3
2	ATP	B	382	-	-	2/18/38/38	0/3/3/3

All (34) bond length outliers are listed below:

Mol	Chain	Res	Type	Atoms	Z	Observed(Å)	Ideal(Å)
2	A	382	ATP	C4-N3	6.04	1.44	1.35
2	C	382	ATP	C4-N3	6.04	1.44	1.35
2	B	382	ATP	C4-N3	5.92	1.43	1.35
2	D	382	ATP	C4-N3	5.90	1.43	1.35
2	D	382	ATP	O5'-C5'	-4.75	1.26	1.44
2	B	382	ATP	O5'-C5'	-4.74	1.26	1.44
2	C	382	ATP	O5'-C5'	-4.55	1.27	1.44
2	A	382	ATP	O5'-C5'	-4.54	1.27	1.44
2	D	382	ATP	O4'-C1'	4.04	1.46	1.41
2	B	382	ATP	O4'-C1'	4.03	1.46	1.41
2	C	382	ATP	O4'-C1'	3.88	1.46	1.41
2	A	382	ATP	O4'-C1'	3.87	1.46	1.41
2	B	382	ATP	PA-O5'	-3.23	1.46	1.59
2	D	382	ATP	PA-O5'	-3.22	1.46	1.59
2	C	382	ATP	PA-O5'	-2.96	1.47	1.59
2	A	382	ATP	PA-O5'	-2.95	1.47	1.59
2	D	382	ATP	C8-N7	-2.55	1.30	1.34
2	B	382	ATP	C8-N7	-2.52	1.30	1.34
2	B	382	ATP	PB-O1B	-2.37	1.42	1.50
2	D	382	ATP	PB-O1B	-2.37	1.42	1.50
2	D	382	ATP	C2-N3	2.33	1.35	1.32
2	B	382	ATP	C2-N3	2.33	1.35	1.32
2	C	382	ATP	C8-N7	-2.28	1.30	1.34
2	A	382	ATP	C8-N7	-2.25	1.30	1.34
2	C	382	ATP	C3'-C4'	-2.23	1.47	1.53

Continued on next page...

Continued from previous page...

Mol	Chain	Res	Type	Atoms	Z	Observed(Å)	Ideal(Å)
2	A	382	ATP	C3'-C4'	-2.21	1.47	1.53
2	A	382	ATP	C2-N3	2.21	1.35	1.32
2	C	382	ATP	C2-N3	2.19	1.35	1.32
2	A	382	ATP	PB-O1B	-2.12	1.43	1.50
2	D	382	ATP	PB-O2B	-2.12	1.45	1.55
2	D	382	ATP	C3'-C4'	-2.11	1.47	1.53
2	B	382	ATP	C3'-C4'	-2.11	1.47	1.53
2	B	382	ATP	PB-O2B	-2.11	1.45	1.55
2	C	382	ATP	PB-O1B	-2.10	1.43	1.50

All (36) bond angle outliers are listed below:

Mol	Chain	Res	Type	Atoms	Z	Observed(°)	Ideal(°)
2	C	382	ATP	O5'-C5'-C4'	12.29	151.30	108.99
2	A	382	ATP	O5'-C5'-C4'	12.28	151.27	108.99
2	D	382	ATP	O5'-C5'-C4'	12.17	150.89	108.99
2	B	382	ATP	O5'-C5'-C4'	12.17	150.87	108.99
2	D	382	ATP	O5'-PA-O1A	-7.23	80.80	109.07
2	B	382	ATP	O5'-PA-O1A	-7.23	80.83	109.07
2	A	382	ATP	O5'-PA-O1A	-6.51	83.64	109.07
2	C	382	ATP	O5'-PA-O1A	-6.50	83.68	109.07
2	B	382	ATP	PA-O5'-C5'	5.91	156.31	121.68
2	D	382	ATP	PA-O5'-C5'	5.90	156.29	121.68
2	C	382	ATP	PA-O5'-C5'	5.66	154.85	121.68
2	A	382	ATP	PA-O5'-C5'	5.65	154.83	121.68
2	B	382	ATP	C5'-C4'-C3'	-5.48	94.63	115.18
2	D	382	ATP	C5'-C4'-C3'	-5.48	94.63	115.18
2	A	382	ATP	C5'-C4'-C3'	-5.24	95.53	115.18
2	C	382	ATP	C5'-C4'-C3'	-5.23	95.57	115.18
2	C	382	ATP	O4'-C4'-C3'	4.74	114.49	105.11
2	A	382	ATP	O4'-C4'-C3'	4.72	114.46	105.11
2	D	382	ATP	O4'-C4'-C3'	4.34	113.71	105.11
2	B	382	ATP	O4'-C4'-C3'	4.33	113.68	105.11
2	D	382	ATP	C3'-C2'-C1'	3.93	106.89	100.98
2	B	382	ATP	C3'-C2'-C1'	3.91	106.87	100.98
2	C	382	ATP	C3'-C2'-C1'	3.57	106.35	100.98
2	A	382	ATP	C3'-C2'-C1'	3.56	106.33	100.98
2	A	382	ATP	C4-C5-N7	2.70	112.21	109.40
2	C	382	ATP	C4-C5-N7	2.70	112.21	109.40
2	D	382	ATP	C4-C5-N7	2.38	111.88	109.40
2	B	382	ATP	C4-C5-N7	2.37	111.87	109.40
2	C	382	ATP	O2A-PA-O1A	2.21	123.15	112.24

Continued on next page...

Continued from previous page...

Mol	Chain	Res	Type	Atoms	Z	Observed(°)	Ideal(°)
2	A	382	ATP	O2A-PA-O1A	2.20	123.10	112.24
2	C	382	ATP	O2A-PA-O5'	-2.16	97.71	107.75
2	A	382	ATP	O2A-PA-O5'	-2.16	97.73	107.75
2	B	382	ATP	O2A-PA-O1A	2.11	122.65	112.24
2	D	382	ATP	O2A-PA-O1A	2.10	122.64	112.24
2	A	382	ATP	O2B-PB-O1B	2.01	122.17	112.24
2	C	382	ATP	O2B-PB-O1B	2.00	122.14	112.24

There are no chirality outliers.

All (8) torsion outliers are listed below:

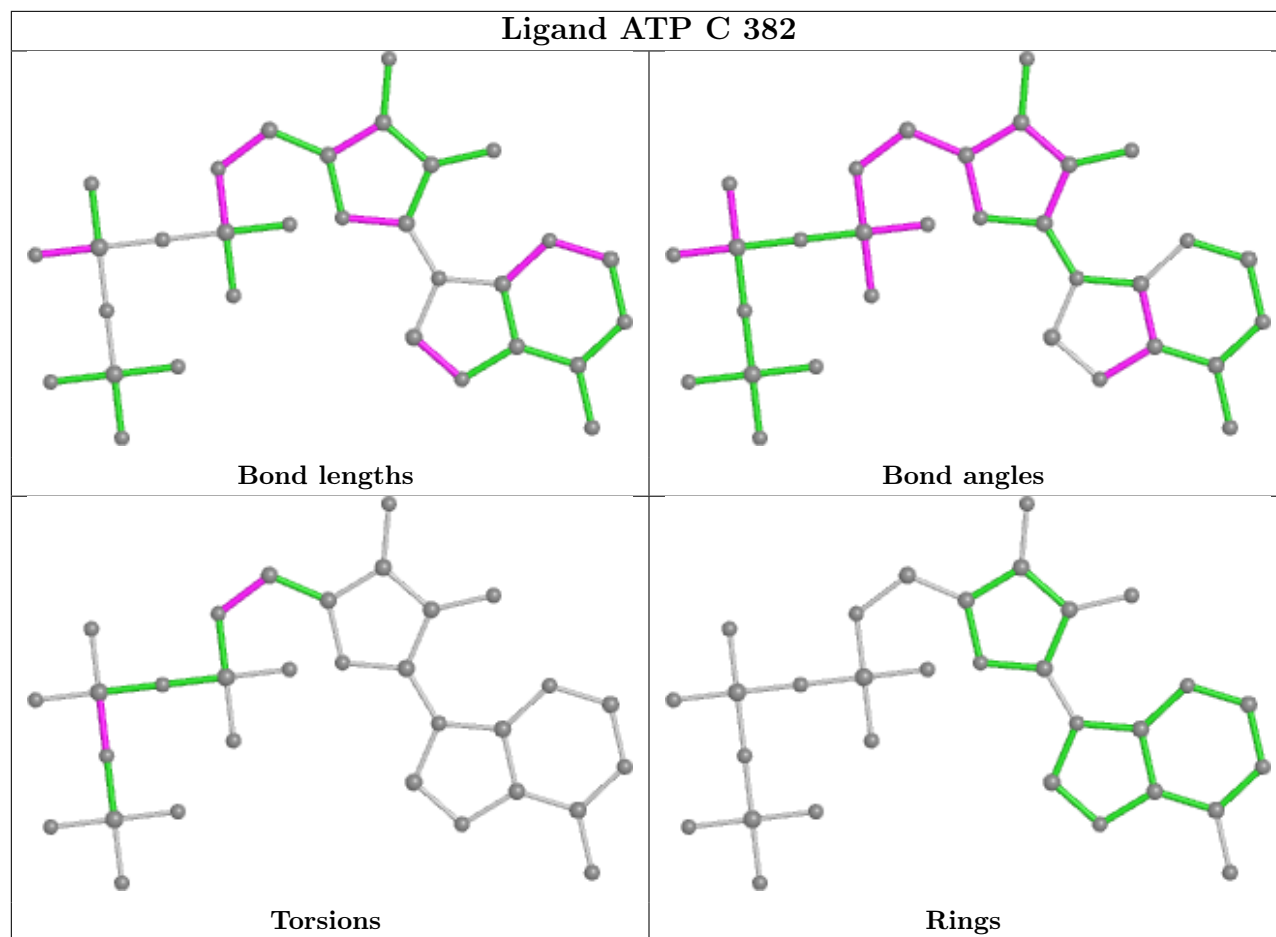
Mol	Chain	Res	Type	Atoms
2	A	382	ATP	C4'-C5'-O5'-PA
2	B	382	ATP	C4'-C5'-O5'-PA
2	C	382	ATP	C4'-C5'-O5'-PA
2	D	382	ATP	C4'-C5'-O5'-PA
2	B	382	ATP	PG-O3B-PB-O2B
2	C	382	ATP	PG-O3B-PB-O2B
2	D	382	ATP	PG-O3B-PB-O2B
2	A	382	ATP	PG-O3B-PB-O2B

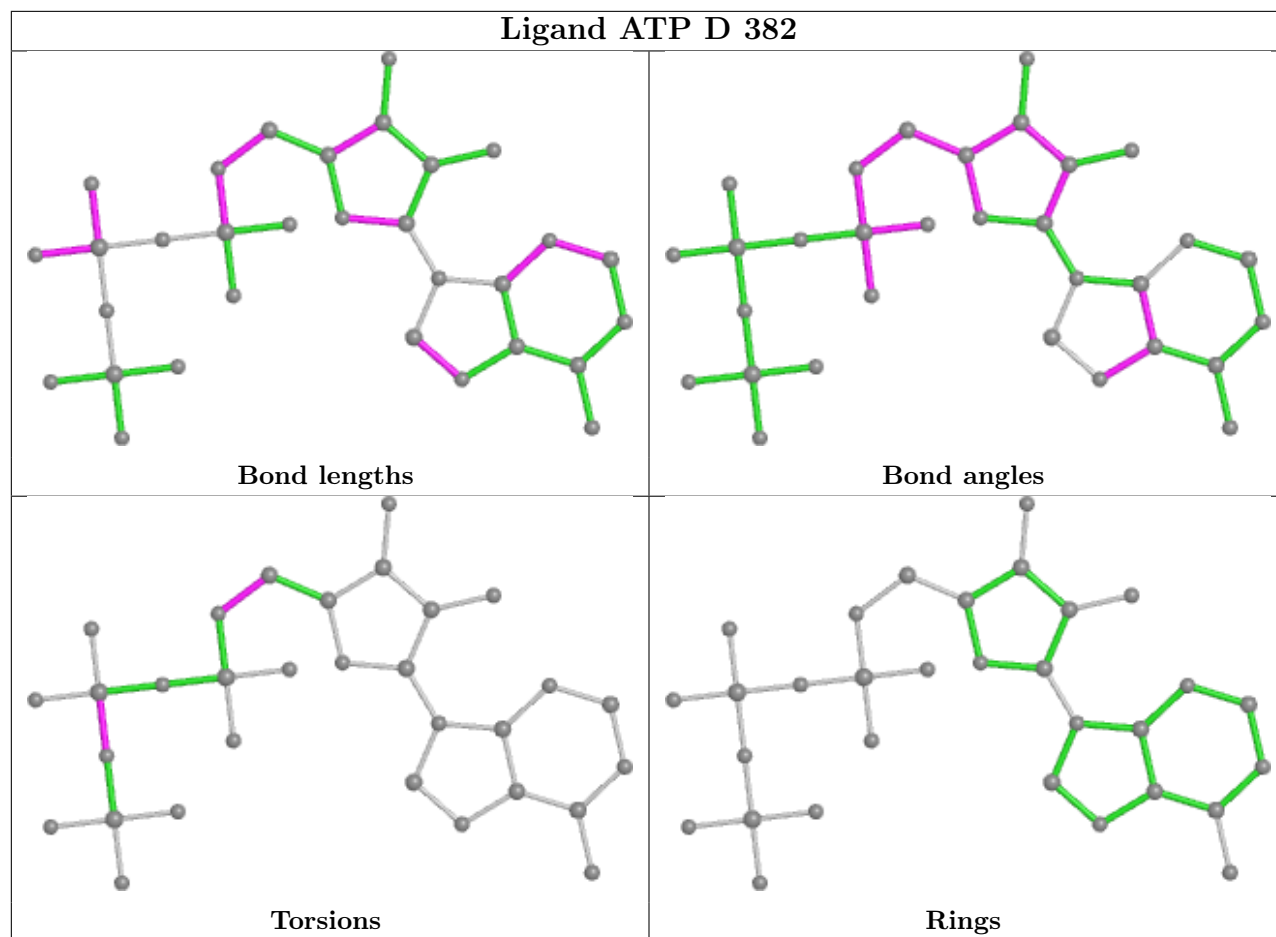
There are no ring outliers.

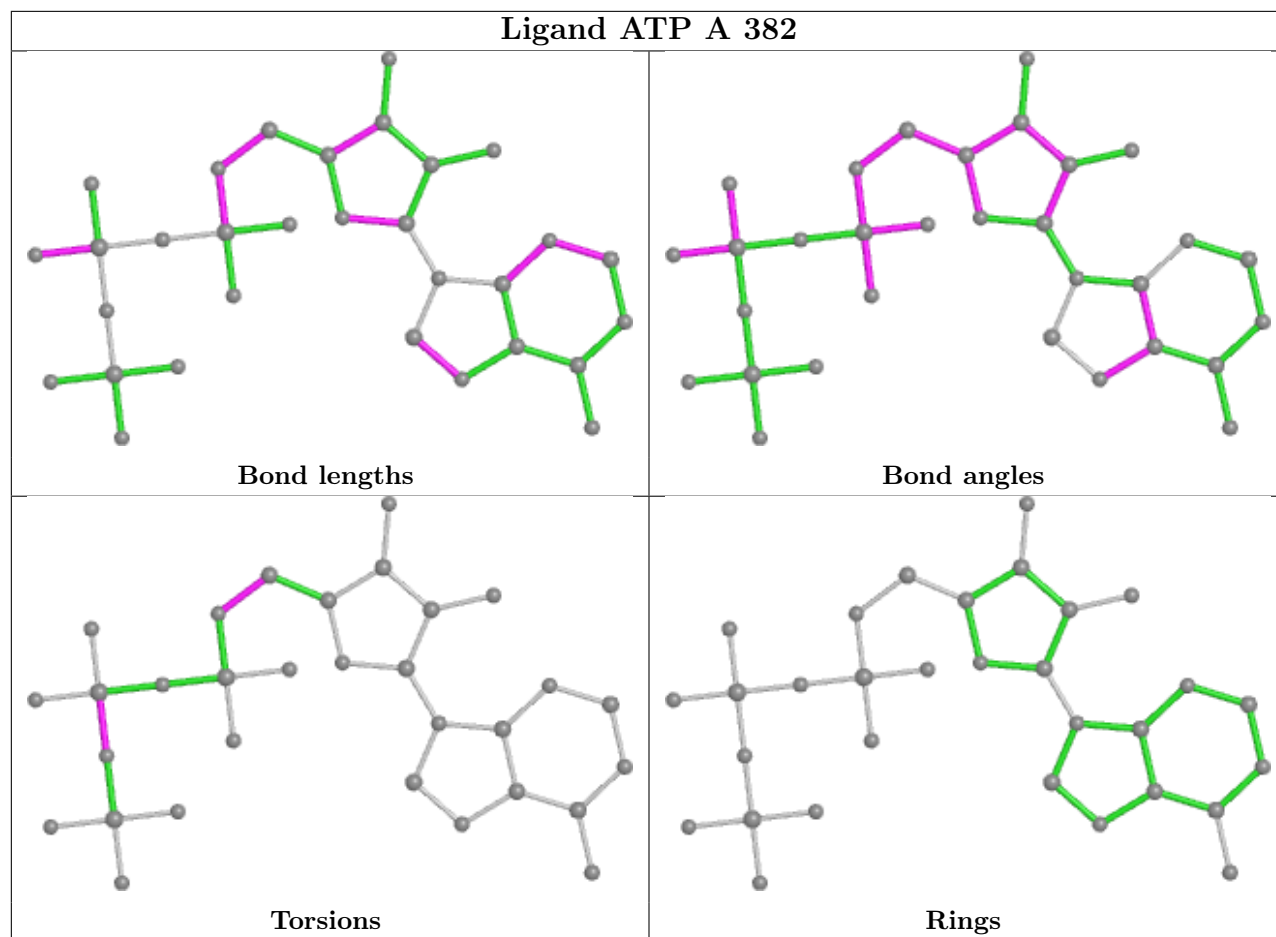
4 monomers are involved in 10 short contacts:

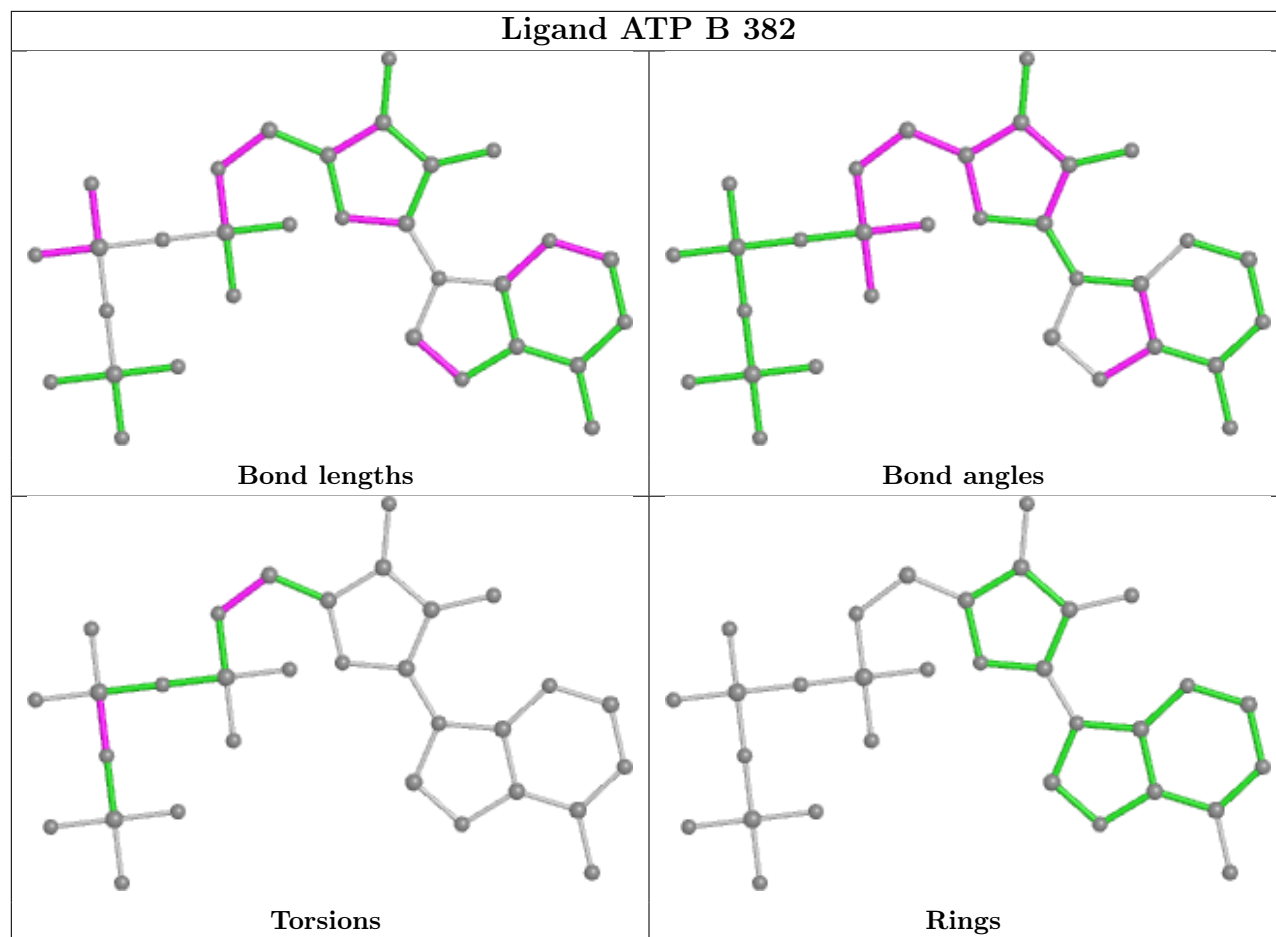
Mol	Chain	Res	Type	Clashes	Symm-Clashes
2	C	382	ATP	3	0
2	D	382	ATP	2	0
2	A	382	ATP	3	0
2	B	382	ATP	2	0

The following is a two-dimensional graphical depiction of Mogul quality analysis of bond lengths, bond angles, torsion angles, and ring geometry for all instances of the Ligand of Interest. In addition, ligands with molecular weight > 250 and outliers as shown on the validation Tables will also be included. For torsion angles, if less than 5% of the Mogul distribution of torsion angles is within 10 degrees of the torsion angle in question, then that torsion angle is considered an outlier. Any bond that is central to one or more torsion angles identified as an outlier by Mogul will be highlighted in the graph. For rings, the root-mean-square deviation (RMSD) between the ring in question and similar rings identified by Mogul is calculated over all ring torsion angles. If the average RMSD is greater than 60 degrees and the minimal RMSD between the ring in question and any Mogul-identified rings is also greater than 60 degrees, then that ring is considered an outlier. The outliers are highlighted in purple. The color gray indicates Mogul did not find sufficient equivalents in the CSD to analyse the geometry.









5.7 Other polymers [i](#)

There are no such residues in this entry.

5.8 Polymer linkage issues [i](#)

There are no chain breaks in this entry.

6 Fit of model and data

6.1 Protein, DNA and RNA chains

In the following table, the column labelled ‘#RSRZ > 2’ contains the number (and percentage) of RSRZ outliers, followed by percent RSRZ outliers for the chain as percentile scores relative to all X-ray entries and entries of similar resolution. The OWAB column contains the minimum, median, 95th percentile and maximum values of the occupancy-weighted average B-factor per residue. The column labelled ‘Q < 0.9’ lists the number of (and percentage) of residues with an average occupancy less than 0.9.

Mol	Chain	Analysed	<RSRZ>	#RSRZ>2	OWAB(Å ²)	Q<0.9
1	A	367/381 (96%)	0.14	15 (4%) 37 30	29, 62, 99, 121	0
1	B	367/381 (96%)	0.52	41 (11%) 5 3	36, 71, 130, 149	0
1	C	367/381 (96%)	0.17	25 (6%) 17 12	29, 62, 99, 121	0
1	D	367/381 (96%)	0.58	45 (12%) 4 2	36, 71, 130, 149	0
All	All	1468/1524 (96%)	0.35	126 (8%) 10 7	29, 67, 117, 149	0

All (126) RSRZ outliers are listed below:

Mol	Chain	Res	Type	RSRZ
1	D	103	ALA	15.8
1	B	103	ALA	12.5
1	B	105	ALA	11.0
1	B	104	GLY	10.6
1	B	84	TYR	10.6
1	B	102	LEU	9.3
1	D	82	GLN	8.0
1	D	102	LEU	7.5
1	B	101	LYS	7.1
1	D	84	TYR	7.1
1	D	83	SER	6.4
1	D	105	ALA	6.3
1	B	82	GLN	6.2
1	D	324	ARG	5.2
1	D	78	GLY	4.8
1	A	108	GLU	4.7
1	D	109	VAL	4.7
1	B	296	ALA	4.4
1	B	78	GLY	4.4
1	B	59	ASP	4.4
1	B	106	LYS	4.3

Continued on next page...

Continued from previous page...

Mol	Chain	Res	Type	RSRZ
1	B	61	PHE	4.3
1	B	60	LEU	4.3
1	C	295	ILE	4.1
1	A	4	VAL	4.0
1	B	15	GLU	4.0
1	C	108	GLU	3.9
1	C	263	ARG	3.9
1	C	262	ASN	3.8
1	D	69	ASP	3.7
1	C	69	ASP	3.7
1	D	85	ALA	3.6
1	D	112	GLN	3.6
1	B	202	ASP	3.5
1	B	112	GLN	3.5
1	B	99	GLY	3.5
1	D	101	LYS	3.4
1	B	83	SER	3.4
1	B	52	LEU	3.3
1	D	20	LYS	3.3
1	C	102	LEU	3.3
1	B	108	GLU	3.3
1	B	87	TYR	3.3
1	A	253	GLN	3.3
1	D	97	SER	3.2
1	D	59	ASP	3.2
1	A	102	LEU	3.2
1	D	296	ALA	3.1
1	C	83	SER	3.1
1	D	79	MET	3.1
1	D	108	GLU	3.1
1	D	104	GLY	3.1
1	D	16	VAL	3.0
1	B	97	SER	3.0
1	D	65	LYS	3.0
1	D	71	PRO	3.0
1	C	15	GLU	2.9
1	D	7	GLN	2.9
1	B	71	PRO	2.9
1	B	363	ARG	2.9
1	B	324	ARG	2.8
1	D	106	LYS	2.8
1	D	28	GLU	2.8

Continued on next page...

Continued from previous page...

Mol	Chain	Res	Type	RSRZ
1	B	64	GLU	2.8
1	C	253	GLN	2.8
1	D	64	GLU	2.8
1	A	85	ALA	2.7
1	B	96	MET	2.7
1	D	263	ARG	2.7
1	D	74	GLU	2.7
1	A	83	SER	2.7
1	D	81	PHE	2.6
1	A	295	ILE	2.6
1	D	253	GLN	2.6
1	D	60	LEU	2.6
1	B	98	PHE	2.6
1	C	95	ASN	2.5
1	A	60	LEU	2.5
1	D	107	LYS	2.5
1	C	128	ASP	2.5
1	D	294	ASP	2.5
1	D	110	ILE	2.5
1	C	82	GLN	2.5
1	B	77	VAL	2.5
1	C	84	TYR	2.5
1	D	61	PHE	2.5
1	C	54	THR	2.4
1	D	96	MET	2.4
1	A	263	ARG	2.4
1	C	103	ALA	2.4
1	D	13	TRP	2.4
1	A	69	ASP	2.4
1	C	81	PHE	2.4
1	D	181	LYS	2.3
1	B	16	VAL	2.3
1	B	116	GLN	2.3
1	B	92	VAL	2.3
1	D	89	HIS	2.3
1	C	107	LYS	2.3
1	B	65	LYS	2.3
1	A	95	ASN	2.3
1	B	294	ASP	2.3
1	C	134	LEU	2.3
1	B	107	LYS	2.2
1	C	85	ALA	2.2

Continued on next page...

Continued from previous page...

Mol	Chain	Res	Type	RSRZ
1	C	89	HIS	2.2
1	C	363	ARG	2.2
1	A	324	ARG	2.2
1	A	211	ARG	2.2
1	D	249	THR	2.2
1	D	115	ASN	2.2
1	C	106	LYS	2.1
1	B	19	SER	2.1
1	D	15	GLU	2.1
1	B	187	MET	2.1
1	B	81	PHE	2.1
1	D	322	SER	2.1
1	A	15	GLU	2.1
1	C	14	GLY	2.1
1	B	109	VAL	2.0
1	C	28	GLU	2.0
1	C	297	ASP	2.0
1	A	293	SER	2.0
1	B	358	ASP	2.0
1	D	75	ARG	2.0
1	B	80	VAL	2.0

6.2 Non-standard residues in protein, DNA, RNA chains [i](#)

There are no non-standard protein/DNA/RNA residues in this entry.

6.3 Carbohydrates [i](#)

There are no monosaccharides in this entry.

6.4 Ligands [i](#)

In the following table, the Atoms column lists the number of modelled atoms in the group and the number defined in the chemical component dictionary. The B-factors column lists the minimum, median, 95th percentile and maximum values of B factors of atoms in the group. The column labelled 'Q< 0.9' lists the number of atoms with occupancy less than 0.9.

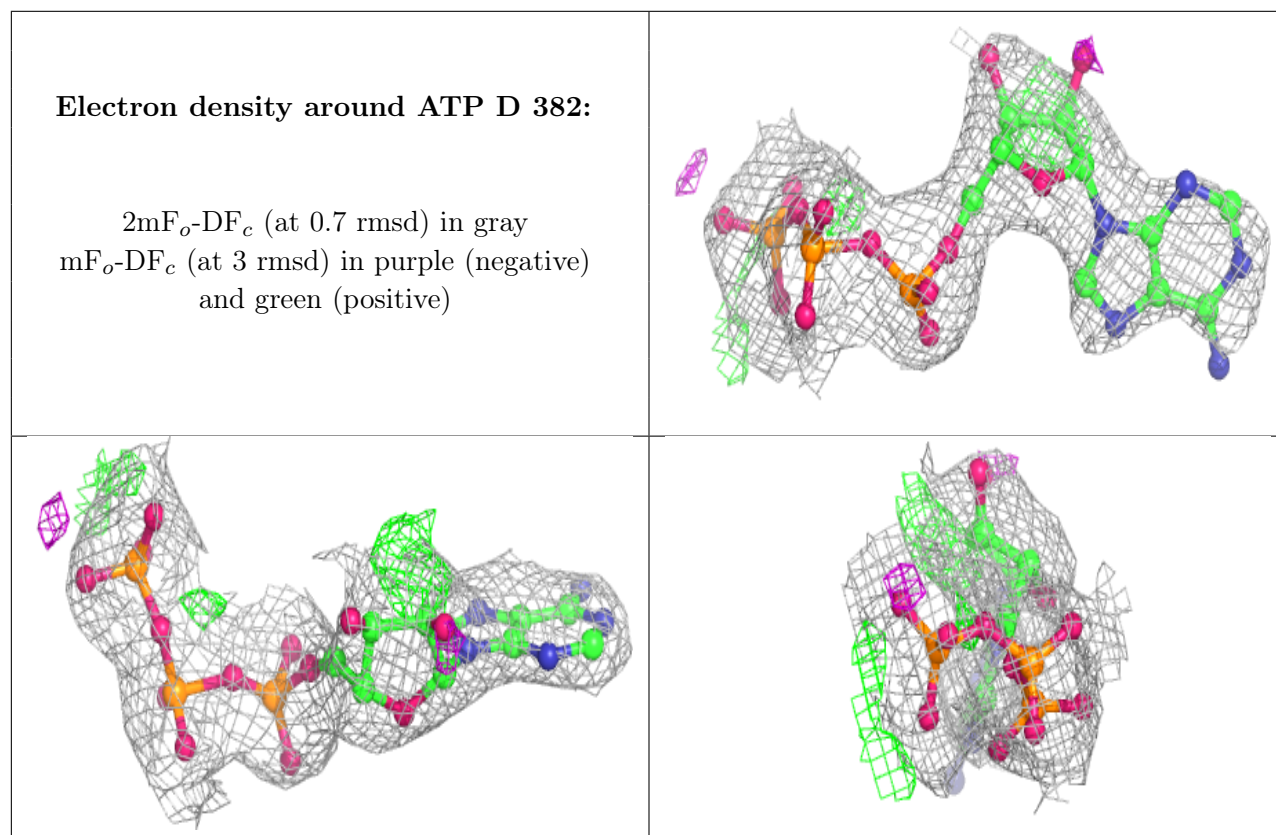
Mol	Type	Chain	Res	Atoms	RSCC	RSR	B-factors(\AA^2)	Q<0.9
2	ATP	D	382	31/31	0.92	0.17	63,87,98,98	0
2	ATP	C	382	31/31	0.93	0.18	38,78,91,92	0

Continued on next page...

Continued from previous page...

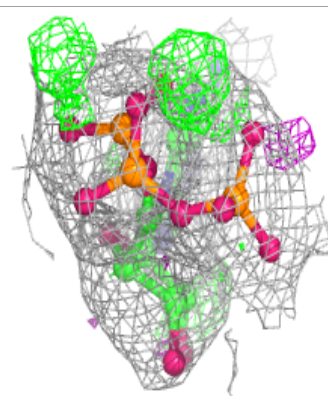
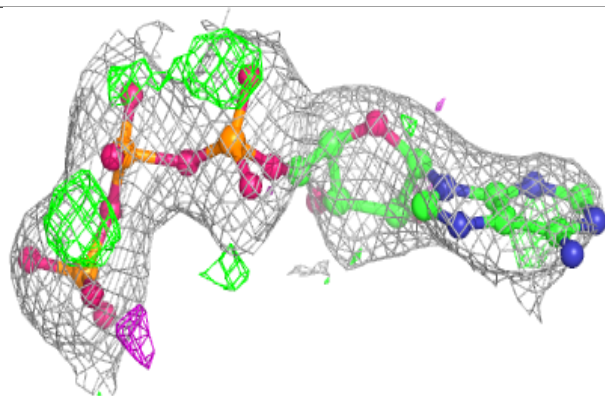
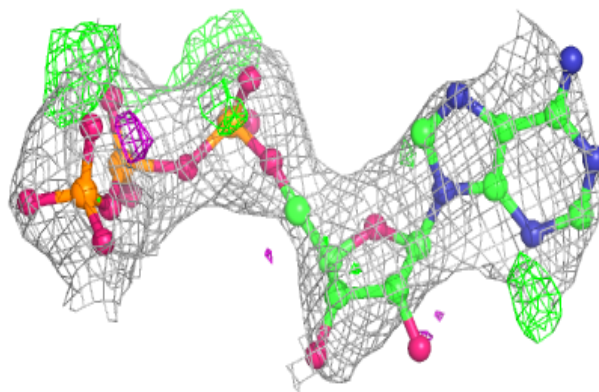
Mol	Type	Chain	Res	Atoms	RSCC	RSR	B-factors(\AA^2)	Q<0.9
2	ATP	A	382	31/31	0.95	0.14	38,78,91,92	0
2	ATP	B	382	31/31	0.95	0.15	63,87,98,98	0

The following is a graphical depiction of the model fit to experimental electron density of all instances of the Ligand of Interest. In addition, ligands with molecular weight > 250 and outliers as shown on the geometry validation Tables will also be included. Each fit is shown from different orientation to approximate a three-dimensional view.

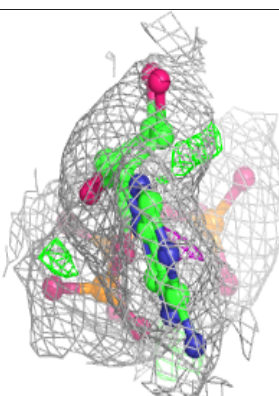
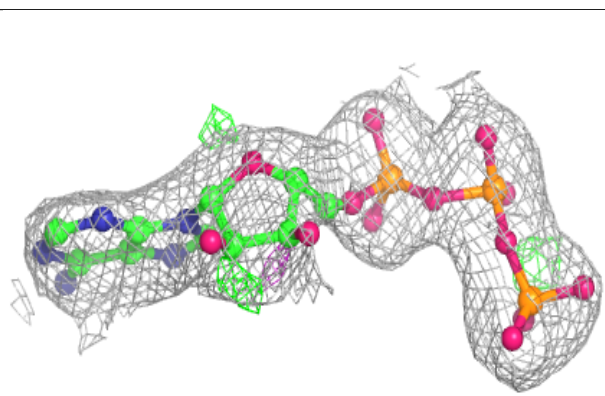
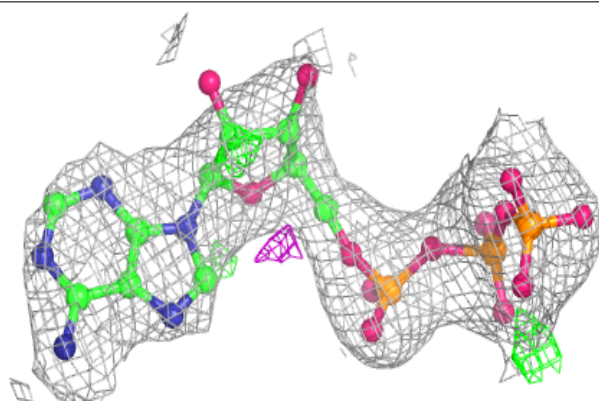


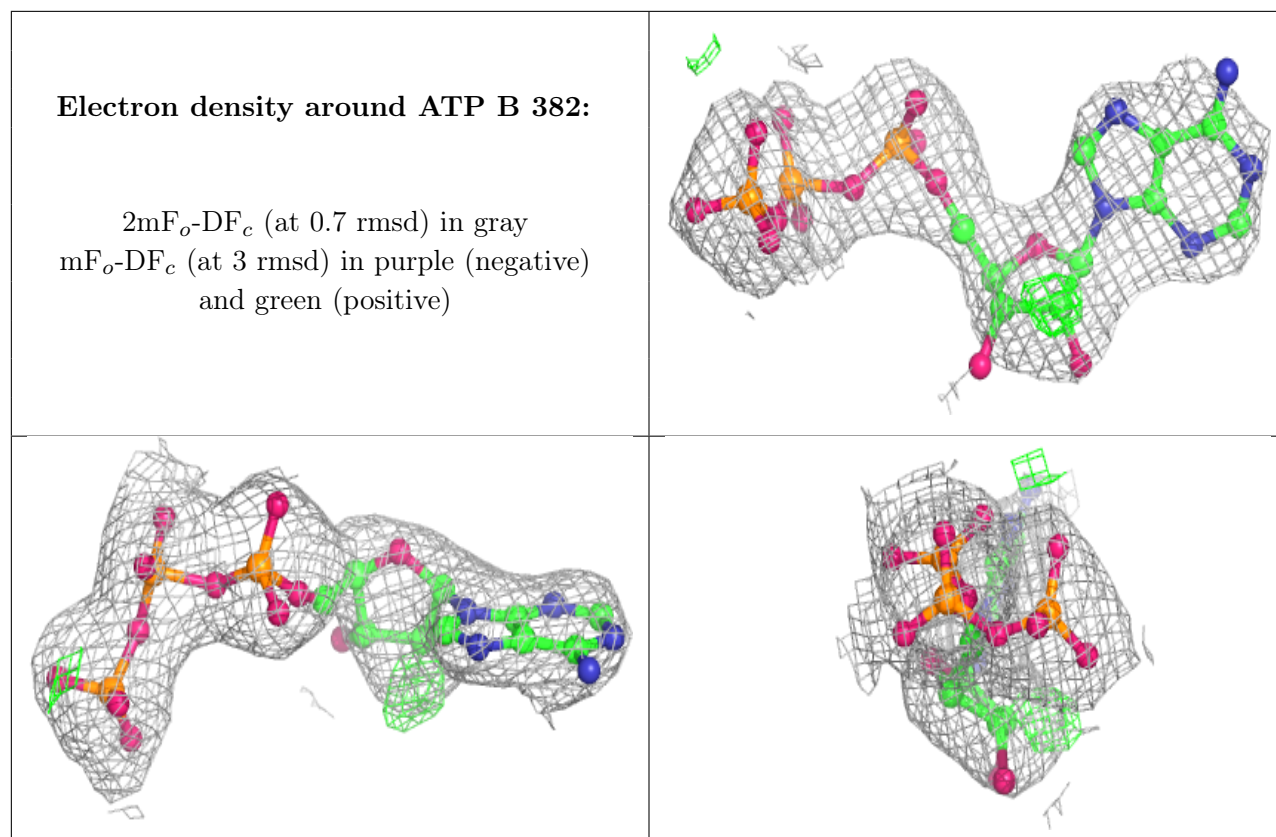
Electron density around ATP C 382:

$2mF_o-DF_c$ (at 0.7 rmsd) in gray
 mF_o-DF_c (at 3 rmsd) in purple (negative)
and green (positive)

**Electron density around ATP A 382:**

$2mF_o-DF_c$ (at 0.7 rmsd) in gray
 mF_o-DF_c (at 3 rmsd) in purple (negative)
and green (positive)





6.5 Other polymers [i](#)

There are no such residues in this entry.