



Full wwPDB X-ray Structure Validation Report ⓘ

May 13, 2020 – 06:21 am BST

PDB ID : 3Q2N
Title : Mouse E-cadherin EC1-2 L175D mutant
Authors : Harrison, O.J.; Jin, X.; Shapiro, L.
Deposited on : 2010-12-20
Resolution : 2.73 Å(reported)

This is a Full wwPDB X-ray Structure Validation Report for a publicly released PDB entry.

We welcome your comments at validation@mail.wwpdb.org

A user guide is available at

<https://www.wwpdb.org/validation/2017/XrayValidationReportHelp>

with specific help available everywhere you see the ⓘ symbol.

The following versions of software and data (see [references ⓘ](#)) were used in the production of this report:

MolProbity : 4.02b-467
Mogul : 1.8.5 (274361), CSD as541be (2020)
Xtriage (Phenix) : 1.13
EDS : 2.11
Percentile statistics : 20191225.v01 (using entries in the PDB archive December 25th 2019)
Refmac : 5.8.0158
CCP4 : 7.0.044 (Gargrove)
Ideal geometry (proteins) : Engh & Huber (2001)
Ideal geometry (DNA, RNA) : Parkinson et al. (1996)
Validation Pipeline (wwPDB-VP) : 2.11

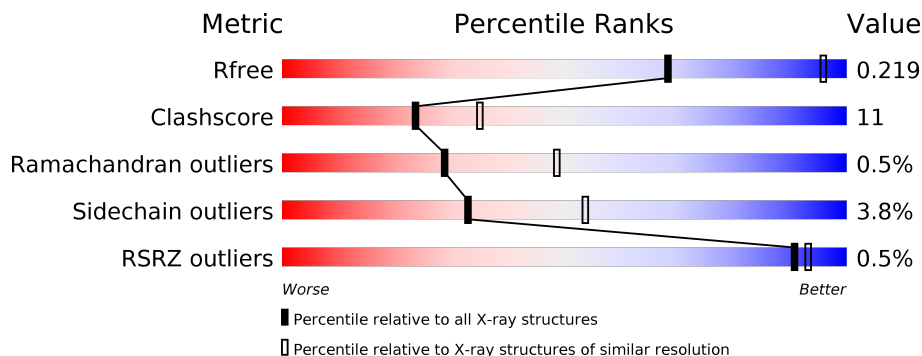
1 Overall quality at a glance

The following experimental techniques were used to determine the structure:

X-RAY DIFFRACTION

The reported resolution of this entry is 2.73 Å.

Percentile scores (ranging between 0-100) for global validation metrics of the entry are shown in the following graphic. The table shows the number of entries on which the scores are based.



Metric	Whole archive (#Entries)	Similar resolution (#Entries, resolution range(Å))
R_{free}	130704	1271 (2.76-2.72)
Clashscore	141614	1322 (2.76-2.72)
Ramachandran outliers	138981	1297 (2.76-2.72)
Sidechain outliers	138945	1298 (2.76-2.72)
RSRZ outliers	127900	1243 (2.76-2.72)

The table below summarises the geometric issues observed across the polymeric chains and their fit to the electron density. The red, orange, yellow and green segments on the lower bar indicate the fraction of residues that contain outliers for ≥ 3 , 2, 1 and 0 types of geometric quality criteria respectively. A grey segment represents the fraction of residues that are not modelled. The numeric value for each fraction is indicated below the corresponding segment, with a dot representing fractions $\leq 5\%$. The upper red bar (where present) indicates the fraction of residues that have poor fit to the electron density. The numeric value is given above the bar.

Mol	Chain	Length	Quality of chain
1	A	213	 71% 23% 5%
1	B	213	 83% 14%

2 Entry composition

There are 4 unique types of molecules in this entry. The entry contains 3585 atoms, of which 0 are hydrogens and 0 are deuteriums.

In the tables below, the ZeroOcc column contains the number of atoms modelled with zero occupancy, the AltConf column contains the number of residues with at least one atom in alternate conformation and the Trace column contains the number of residues modelled with at most 2 atoms.

- Molecule 1 is a protein called Cadherin-1.

Mol	Chain	Residues	Atoms					ZeroOcc	AltConf	Trace
			Total	C	N	O	S			
1	A	213	1636	1025	267	340	4	0	0	0
1	B	213	1636	1025	267	340	4	0	0	0

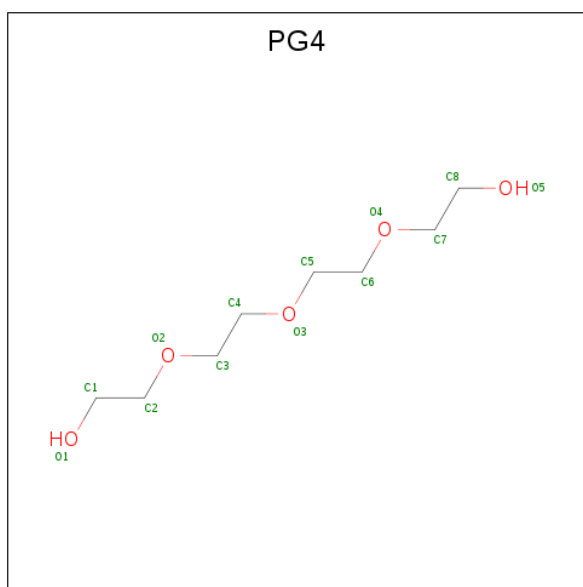
There are 2 discrepancies between the modelled and reference sequences:

Chain	Residue	Modelled	Actual	Comment	Reference
A	175	ASP	LEU	ENGINEERED MUTATION	UNP P09803
B	175	ASP	LEU	ENGINEERED MUTATION	UNP P09803

- Molecule 2 is CALCIUM ION (three-letter code: CA) (formula: Ca).

Mol	Chain	Residues	Atoms		ZeroOcc	AltConf
2	B	4	Total	Ca	0	0
			4	4		
2	A	4	Total	Ca	0	0
			4	4		

- Molecule 3 is TETRAETHYLENE GLYCOL (three-letter code: PG4) (formula: C₈H₁₈O₅).



Mol	Chain	Residues	Atoms	ZeroOcc	AltConf
3	A	1	Total C O 13 8 5	0	0
3	B	1	Total C O 13 8 5	0	0

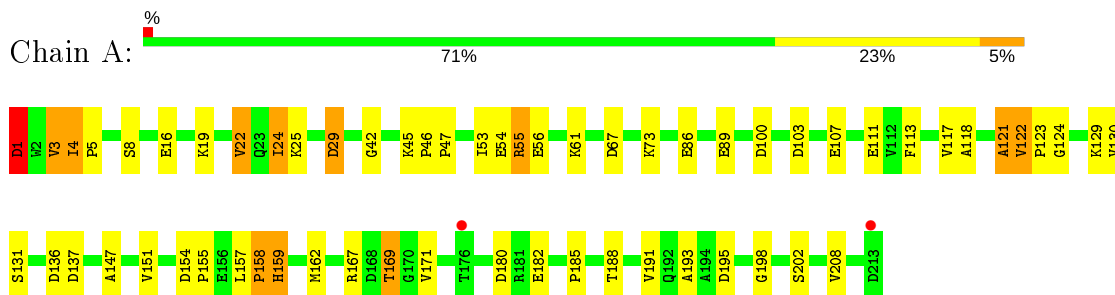
- Molecule 4 is water.

Mol	Chain	Residues	Atoms	ZeroOcc	AltConf
4	A	133	Total O 133 133	0	0
4	B	146	Total O 146 146	0	0

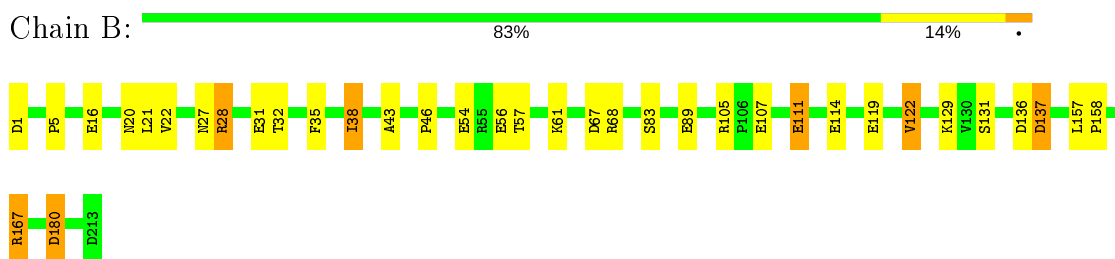
3 Residue-property plots [i](#)

These plots are drawn for all protein, RNA and DNA chains in the entry. The first graphic for a chain summarises the proportions of the various outlier classes displayed in the second graphic. The second graphic shows the sequence view annotated by issues in geometry and electron density. Residues are color-coded according to the number of geometric quality criteria for which they contain at least one outlier: green = 0, yellow = 1, orange = 2 and red = 3 or more. A red dot above a residue indicates a poor fit to the electron density ($RSRZ > 2$). Stretches of 2 or more consecutive residues without any outlier are shown as a green connector. Residues present in the sample, but not in the model, are shown in grey.

- Molecule 1: Cadherin-1



- Molecule 1: Cadherin-1



4 Data and refinement statistics

Property	Value	Source
Space group	C 2 2 2	Depositor
Cell constants a, b, c, α , β , γ	140.85Å 169.49Å 131.35Å 90.00° 90.00° 90.00°	Depositor
Resolution (Å)	20.00 – 2.73 37.26 – 2.73	Depositor EDS
% Data completeness (in resolution range)	98.1 (20.00-2.73) 98.1 (37.26-2.73)	Depositor EDS
R_{merge}	(Not available)	Depositor
R_{sym}	0.12	Depositor
$\langle I/\sigma(I) \rangle$ ¹	3.93 (at 2.72Å)	Xtrriage
Refinement program	REFMAC 5.5.0072	Depositor
R, R_{free}	0.201 , 0.224 0.198 , 0.219	Depositor DCC
R_{free} test set	2093 reflections (5.06%)	wwPDB-VP
Wilson B-factor (Å ²)	35.5	Xtrriage
Anisotropy	0.219	Xtrriage
Bulk solvent k_{sol} (e/Å ³), B_{sol} (Å ²)	0.31 , 39.9	EDS
L-test for twinning ²	$\langle L \rangle = 0.49$, $\langle L^2 \rangle = 0.32$	Xtrriage
Estimated twinning fraction	No twinning to report.	Xtrriage
F_o, F_c correlation	0.93	EDS
Total number of atoms	3585	wwPDB-VP
Average B, all atoms (Å ²)	31.0	wwPDB-VP

Xtrriage's analysis on translational NCS is as follows: *The largest off-origin peak in the Patterson function is 4.19% of the height of the origin peak. No significant pseudotranslation is detected.*

¹Intensities estimated from amplitudes.

²Theoretical values of $\langle |L| \rangle$, $\langle L^2 \rangle$ for acentric reflections are 0.5, 0.333 respectively for untwinned datasets, and 0.375, 0.2 for perfectly twinned datasets.

5 Model quality [i](#)

5.1 Standard geometry [i](#)

Bond lengths and bond angles in the following residue types are not validated in this section: CA, PG4

The Z score for a bond length (or angle) is the number of standard deviations the observed value is removed from the expected value. A bond length (or angle) with $|Z| > 5$ is considered an outlier worth inspection. RMSZ is the root-mean-square of all Z scores of the bond lengths (or angles).

Mol	Chain	Bond lengths		Bond angles	
		RMSZ	# Z >5	RMSZ	# Z >5
1	A	1.18	4/1667 (0.2%)	1.11	14/2274 (0.6%)
1	B	1.27	5/1667 (0.3%)	1.15	9/2274 (0.4%)
All	All	1.22	9/3334 (0.3%)	1.13	23/4548 (0.5%)

Chiral center outliers are detected by calculating the chiral volume of a chiral center and verifying if the center is modelled as a planar moiety or with the opposite hand. A planarity outlier is detected by checking planarity of atoms in a peptide group, atoms in a mainchain group or atoms of a sidechain that are expected to be planar.

Mol	Chain	#Chirality outliers	#Planarity outliers
1	A	0	4

All (9) bond length outliers are listed below:

Mol	Chain	Res	Type	Atoms	Z	Observed(Å)	Ideal(Å)
1	B	31	GLU	CG-CD	6.31	1.61	1.51
1	A	182	GLU	CB-CG	5.72	1.63	1.52
1	B	111	GLU	CG-CD	5.46	1.60	1.51
1	A	151	VAL	CB-CG1	5.43	1.64	1.52
1	B	16	GLU	CB-CG	5.30	1.62	1.52
1	B	16	GLU	CG-CD	5.17	1.59	1.51
1	A	107	GLU	CG-CD	5.11	1.59	1.51
1	A	45	LYS	CD-CE	5.04	1.63	1.51
1	B	107	GLU	CG-CD	5.03	1.59	1.51

All (23) bond angle outliers are listed below:

Mol	Chain	Res	Type	Atoms	Z	Observed(°)	Ideal(°)
1	B	67	ASP	CB-CG-OD2	-8.97	110.23	118.30
1	B	180	ASP	CB-CG-OD1	8.92	126.33	118.30

Continued on next page...

Continued from previous page...

Mol	Chain	Res	Type	Atoms	Z	Observed(°)	Ideal(°)
1	A	1	ASP	CB-CG-OD1	-8.62	110.55	118.30
1	B	67	ASP	CB-CG-OD1	8.12	125.61	118.30
1	B	137	ASP	CB-CG-OD1	7.97	125.47	118.30
1	A	67	ASP	CB-CG-OD1	7.67	125.20	118.30
1	A	180	ASP	CB-CG-OD2	-6.79	112.19	118.30
1	A	100	ASP	CB-CG-OD1	6.47	124.12	118.30
1	B	129	LYS	CD-CE-NZ	-6.44	96.88	111.70
1	A	180	ASP	CB-CG-OD1	6.20	123.88	118.30
1	B	28	ARG	NE-CZ-NH1	-6.20	117.20	120.30
1	A	103	ASP	CB-CG-OD1	6.09	123.78	118.30
1	A	3	VAL	CB-CA-C	-5.93	100.14	111.40
1	B	105	ARG	NE-CZ-NH1	5.83	123.21	120.30
1	A	136	ASP	CB-CG-OD2	5.61	123.35	118.30
1	B	136	ASP	CB-CG-OD2	5.50	123.25	118.30
1	A	137	ASP	CB-CG-OD1	5.44	123.19	118.30
1	A	195	ASP	CB-CG-OD1	5.34	123.11	118.30
1	A	67	ASP	CB-CG-OD2	-5.26	113.57	118.30
1	B	137	ASP	CB-CG-OD2	-5.11	113.70	118.30
1	A	100	ASP	CB-CG-OD2	-5.08	113.73	118.30
1	A	4	ILE	N-CA-C	-5.01	97.48	111.00
1	A	29	ASP	CB-CG-OD1	5.01	122.81	118.30

There are no chirality outliers.

All (4) planarity outliers are listed below:

Mol	Chain	Res	Type	Group
1	A	121	ALA	Peptide
1	A	123	PRO	Peptide
1	A	24	ILE	Peptide
1	A	3	VAL	Peptide

5.2 Too-close contacts [\(i\)](#)

In the following table, the Non-H and H(model) columns list the number of non-hydrogen atoms and hydrogen atoms in the chain respectively. The H(added) column lists the number of hydrogen atoms added and optimized by MolProbity. The Clashes column lists the number of clashes within the asymmetric unit, whereas Symm-Clashes lists symmetry related clashes.

Mol	Chain	Non-H	H(model)	H(added)	Clashes	Symm-Clashes
1	A	1636	0	1595	53	0
1	B	1636	0	1595	31	0

Continued on next page...

Continued from previous page...

Mol	Chain	Non-H	H(model)	H(added)	Clashes	Symm-Clashes
2	A	4	0	0	0	0
2	B	4	0	0	0	0
3	A	13	0	18	6	0
3	B	13	0	18	0	0
4	A	133	0	0	13	0
4	B	146	0	0	9	0
All	All	3585	0	3226	73	0

The all-atom clashscore is defined as the number of clashes found per 1000 atoms (including hydrogen atoms). The all-atom clashscore for this structure is 11.

All (73) close contacts within the same asymmetric unit are listed below, sorted by their clash magnitude.

Atom-1	Atom-2	Interatomic distance (Å)	Clash overlap (Å)
1:B:56:GLU:HG2	4:B:263:HOH:O	1.31	1.29
1:A:1:ASP:N	1:B:89:GLU:OE2	1.78	1.14
1:B:131:SER:HB3	4:B:216:HOH:O	1.43	1.14
1:A:208:VAL:HG11	4:A:275:HOH:O	1.51	1.08
1:A:131:SER:HB3	4:A:279:HOH:O	1.56	1.06
1:A:19:LYS:HE2	4:A:281:HOH:O	1.53	1.05
1:A:73:LYS:HZ1	3:A:400:PG4:H11	1.33	0.91
1:B:114:GLU:HG2	4:B:354:HOH:O	1.69	0.91
1:A:147:ALA:HB1	1:A:167:ARG:HE	1.32	0.91
1:A:73:LYS:NZ	3:A:400:PG4:H11	1.92	0.85
1:B:54:GLU:HG3	1:B:57:THR:OG1	1.78	0.83
1:B:131:SER:CB	4:B:216:HOH:O	2.11	0.83
1:A:167:ARG:HH21	1:A:198:GLY:HA3	1.45	0.82
1:A:121:ALA:HA	1:A:122:VAL:HG22	1.61	0.82
1:B:122:VAL:HG22	4:B:261:HOH:O	1.84	0.78
1:B:46:PRO:HD2	4:B:363:HOH:O	1.87	0.75
1:B:28:ARG:NH1	4:B:351:HOH:O	2.21	0.73
1:A:73:LYS:HE2	3:A:400:PG4:H31	1.71	0.72
1:A:1:ASP:N	1:B:89:GLU:CD	2.42	0.71
1:B:111:GLU:HG2	4:B:215:HOH:O	1.92	0.70
1:A:147:ALA:CB	1:A:167:ARG:HE	2.03	0.69
1:A:25:LYS:NZ	1:A:29:ASP:OD2	2.28	0.66
1:A:122:VAL:O	1:A:124:GLY:N	2.30	0.65
1:B:54:GLU:HG2	4:B:237:HOH:O	1.97	0.64
1:A:111:GLU:HG2	4:A:295:HOH:O	1.99	0.63
1:A:121:ALA:HA	1:A:122:VAL:CG2	2.28	0.63
1:A:22:VAL:HG13	1:B:5:PRO:HG3	1.81	0.63

Continued on next page...

Continued from previous page...

Atom-1	Atom-2	Interatomic distance (Å)	Clash overlap (Å)
1:A:1:ASP:CG	4:A:254:HOH:O	2.38	0.62
1:A:147:ALA:HB1	1:A:167:ARG:NE	2.11	0.60
3:A:400:PG4:H71	4:A:286:HOH:O	2.02	0.60
1:A:157:LEU:HA	1:A:158:PRO:C	2.22	0.60
1:A:159:HIS:O	1:A:162:MET:HG2	2.04	0.58
1:B:54:GLU:CG	1:B:57:THR:OG1	2.51	0.57
1:A:1:ASP:H2	1:B:89:GLU:CD	2.01	0.57
1:B:21:LEU:O	1:B:22:VAL:HG23	2.05	0.56
1:A:16:GLU:O	1:A:19:LYS:HE3	2.07	0.55
1:A:129:LYS:HE2	4:A:279:HOH:O	2.08	0.54
1:A:1:ASP:H1	1:B:89:GLU:CD	2.10	0.54
1:A:188:THR:O	4:A:277:HOH:O	2.19	0.53
1:A:22:VAL:CG1	1:B:5:PRO:HG3	2.38	0.52
1:B:119:GLU:HG2	1:B:180:ASP:HA	1.91	0.52
1:A:1:ASP:HB3	1:B:27:ASN:OD1	2.09	0.52
1:A:5:PRO:HG3	1:B:22:VAL:HG11	1.93	0.51
1:A:55:ARG:NH2	4:A:282:HOH:O	2.43	0.50
1:A:25:LYS:CE	4:A:350:HOH:O	2.60	0.49
1:A:121:ALA:CA	1:A:122:VAL:HG22	2.36	0.49
1:A:169:THR:HB	1:A:171:VAL:HG23	1.95	0.49
1:A:154:ASP:OD1	1:A:155:PRO:HA	2.13	0.49
1:A:56:GLU:HB2	4:A:348:HOH:O	2.14	0.48
1:A:53:ILE:HG23	1:A:53:ILE:O	2.13	0.47
1:A:54:GLU:HG2	1:A:61:LYS:HE3	1.96	0.47
1:A:73:LYS:HE3	3:A:400:PG4:H61	1.97	0.47
1:B:68:ARG:CZ	1:B:137:ASP:HB2	2.44	0.46
1:B:35:PHE:CD1	1:B:35:PHE:N	2.83	0.46
1:A:154:ASP:HA	1:A:155:PRO:HA	1.73	0.44
1:B:20:ASN:OD1	1:B:61:LYS:HE2	2.18	0.44
1:A:89:GLU:CD	1:B:1:ASP:H2	2.20	0.43
1:A:1:ASP:N	1:B:89:GLU:OE1	2.50	0.43
1:A:42:GLY:HA2	1:A:47:PRO:O	2.18	0.43
1:A:117:VAL:HG22	1:A:118:ALA:N	2.34	0.42
1:A:29:ASP:HB2	4:A:343:HOH:O	2.19	0.42
1:A:46:PRO:HA	1:A:47:PRO:HA	1.90	0.42
1:A:86:GLU:HG2	1:A:86:GLU:O	2.17	0.42
1:B:157:LEU:HA	1:B:158:PRO:C	2.41	0.42
1:A:5:PRO:CG	1:B:22:VAL:HG11	2.50	0.42
1:A:193:ALA:O	1:A:202:SER:HA	2.20	0.41
1:A:113:PHE:CG	1:A:130:VAL:HG12	2.55	0.41
1:A:73:LYS:HZ2	3:A:400:PG4:C7	2.32	0.41

Continued on next page...

Continued from previous page...

Atom-1	Atom-2	Interatomic distance (Å)	Clash overlap (Å)
1:A:5:PRO:HG3	1:B:22:VAL:CG1	2.51	0.41
1:A:4:ILE:HD13	1:A:4:ILE:HG21	1.76	0.41
1:A:25:LYS:HE3	4:A:350:HOH:O	2.21	0.40
1:B:167:ARG:O	1:B:167:ARG:HG3	2.20	0.40
1:B:38:ILE:HG13	1:B:43:ALA:HB1	2.03	0.40

There are no symmetry-related clashes.

5.3 Torsion angles [i](#)

5.3.1 Protein backbone [i](#)

In the following table, the Percentiles column shows the percent Ramachandran outliers of the chain as a percentile score with respect to all X-ray entries followed by that with respect to entries of similar resolution.

The Analysed column shows the number of residues for which the backbone conformation was analysed, and the total number of residues.

Mol	Chain	Analysed	Favoured	Allowed	Outliers	Percentiles	
1	A	211/213 (99%)	197 (93%)	12 (6%)	2 (1%)	17	32
1	B	211/213 (99%)	203 (96%)	8 (4%)	0	100	100
All	All	422/426 (99%)	400 (95%)	20 (5%)	2 (0%)	29	48

All (2) Ramachandran outliers are listed below:

Mol	Chain	Res	Type
1	A	185	PRO
1	A	158	PRO

5.3.2 Protein sidechains [i](#)

In the following table, the Percentiles column shows the percent sidechain outliers of the chain as a percentile score with respect to all X-ray entries followed by that with respect to entries of similar resolution.

The Analysed column shows the number of residues for which the sidechain conformation was analysed, and the total number of residues.

Mol	Chain	Analysed	Rotameric	Outliers	Percentiles	
1	A	184/184 (100%)	175 (95%)	9 (5%)	25	43
1	B	184/184 (100%)	179 (97%)	5 (3%)	44	65
All	All	368/368 (100%)	354 (96%)	14 (4%)	33	54

All (14) residues with a non-rotameric sidechain are listed below:

Mol	Chain	Res	Type
1	A	1	ASP
1	A	8	SER
1	A	22	VAL
1	A	24	ILE
1	A	55	ARG
1	A	122	VAL
1	A	159	HIS
1	A	169	THR
1	A	191	VAL
1	B	32	THR
1	B	38	ILE
1	B	83	SER
1	B	122	VAL
1	B	167	ARG

Some sidechains can be flipped to improve hydrogen bonding and reduce clashes. All (1) such sidechains are listed below:

Mol	Chain	Res	Type
1	A	159	HIS

5.3.3 RNA [i](#)

There are no RNA molecules in this entry.

5.4 Non-standard residues in protein, DNA, RNA chains [i](#)

There are no non-standard protein/DNA/RNA residues in this entry.

5.5 Carbohydrates [i](#)

There are no carbohydrates in this entry.

5.6 Ligand geometry [i](#)

Of 10 ligands modelled in this entry, 8 are monoatomic - leaving 2 for Mogul analysis.

In the following table, the Counts columns list the number of bonds (or angles) for which Mogul statistics could be retrieved, the number of bonds (or angles) that are observed in the model and the number of bonds (or angles) that are defined in the Chemical Component Dictionary. The Link column lists molecule types, if any, to which the group is linked. The Z score for a bond length (or angle) is the number of standard deviations the observed value is removed from the expected value. A bond length (or angle) with $|Z| > 2$ is considered an outlier worth inspection. RMSZ is the root-mean-square of all Z scores of the bond lengths (or angles).

Mol	Type	Chain	Res	Link	Bond lengths			Bond angles		
					Counts	RMSZ	# Z > 2	Counts	RMSZ	# Z > 2
3	PG4	B	400	-	12,12,12	0.97	0	11,11,11	0.93	1 (9%)
3	PG4	A	400	-	12,12,12	0.79	0	11,11,11	1.00	0

In the following table, the Chirals column lists the number of chiral outliers, the number of chiral centers analysed, the number of these observed in the model and the number defined in the Chemical Component Dictionary. Similar counts are reported in the Torsion and Rings columns. '-' means no outliers of that kind were identified.

Mol	Type	Chain	Res	Link	Chirals	Torsions	Rings
3	PG4	B	400	-	-	5/10/10/10	-
3	PG4	A	400	-	-	5/10/10/10	-

There are no bond length outliers.

All (1) bond angle outliers are listed below:

Mol	Chain	Res	Type	Atoms	Z	Observed(°)	Ideal(°)
3	B	400	PG4	O2-C2-C1	2.31	120.22	110.07

There are no chirality outliers.

All (10) torsion outliers are listed below:

Mol	Chain	Res	Type	Atoms
3	B	400	PG4	O2-C3-C4-O3
3	A	400	PG4	O2-C3-C4-O3
3	A	400	PG4	O1-C1-C2-O2
3	A	400	PG4	O3-C5-C6-O4
3	B	400	PG4	O1-C1-C2-O2
3	A	400	PG4	C3-C4-O3-C5
3	B	400	PG4	O4-C7-C8-O5

Continued on next page...

Continued from previous page...

Mol	Chain	Res	Type	Atoms
3	B	400	PG4	C5-C6-O4-C7
3	B	400	PG4	C6-C5-O3-C4
3	A	400	PG4	C6-C5-O3-C4

There are no ring outliers.

1 monomer is involved in 6 short contacts:

Mol	Chain	Res	Type	Clashes	Symm-Clashes
3	A	400	PG4	6	0

5.7 Other polymers [i](#)

There are no such residues in this entry.

5.8 Polymer linkage issues [i](#)

There are no chain breaks in this entry.

6 Fit of model and data [i](#)

6.1 Protein, DNA and RNA chains [i](#)

In the following table, the column labelled '#RSRZ> 2' contains the number (and percentage) of RSRZ outliers, followed by percent RSRZ outliers for the chain as percentile scores relative to all X-ray entries and entries of similar resolution. The OWAB column contains the minimum, median, 95th percentile and maximum values of the occupancy-weighted average B-factor per residue. The column labelled 'Q< 0.9' lists the number of (and percentage) of residues with an average occupancy less than 0.9.

Mol	Chain	Analysed	<RSRZ>	#RSRZ>2	OWAB(Å ²)	Q<0.9
1	A	213/213 (100%)	-0.41	2 (0%) 84 88	7, 32, 71, 82	0
1	B	213/213 (100%)	-0.63	0 100 100	12, 24, 45, 71	0
All	All	426/426 (100%)	-0.52	2 (0%) 91 93	7, 26, 65, 82	0

All (2) RSRZ outliers are listed below:

Mol	Chain	Res	Type	RSRZ
1	A	176	THR	2.9
1	A	213	ASP	2.3

6.2 Non-standard residues in protein, DNA, RNA chains [i](#)

There are no non-standard protein/DNA/RNA residues in this entry.

6.3 Carbohydrates [i](#)

There are no carbohydrates in this entry.

6.4 Ligands [i](#)

In the following table, the Atoms column lists the number of modelled atoms in the group and the number defined in the chemical component dictionary. The B-factors column lists the minimum, median, 95th percentile and maximum values of B factors of atoms in the group. The column labelled 'Q< 0.9' lists the number of atoms with occupancy less than 0.9.

Mol	Type	Chain	Res	Atoms	RSCC	RSR	B-factors(Å ²)	Q<0.9
3	PG4	A	400	13/13	0.88	0.21	53,66,74,75	0
3	PG4	B	400	13/13	0.91	0.21	44,56,60,64	0
2	CA	A	304	1/1	0.97	0.05	69,69,69,69	0

Continued on next page...

Continued from previous page...

Mol	Type	Chain	Res	Atoms	RSCC	RSR	B-factors(\AA^2)	Q<0.9
2	CA	B	304	1/1	0.98	0.04	60,60,60,60	0
2	CA	B	301	1/1	0.99	0.06	18,18,18,18	0
2	CA	A	302	1/1	0.99	0.04	26,26,26,26	0
2	CA	A	301	1/1	0.99	0.05	22,22,22,22	0
2	CA	B	302	1/1	1.00	0.06	22,22,22,22	0
2	CA	B	303	1/1	1.00	0.05	20,20,20,20	0
2	CA	A	303	1/1	1.00	0.03	28,28,28,28	0

6.5 Other polymers [i](#)

There are no such residues in this entry.