



Full wwPDB X-ray Structure Validation Report ⓘ

Jun 18, 2024 – 07:13 pm BST

PDB ID : 8Q6Y
Title : Crystal structure of Cytochrome P450 GymB5 from *Streptomyces katrae* in complex with cYY and Hypoxanthine
Authors : Freytag, J.; Mueller, J.M.; Stehle, T.; Zocher, G.
Deposited on : 2023-08-15
Resolution : 1.81 Å (reported)

This is a Full wwPDB X-ray Structure Validation Report for a publicly released PDB entry.

We welcome your comments at validation@mail.wwpdb.org

A user guide is available at

<https://www.wwpdb.org/validation/2017/XrayValidationReportHelp>

with specific help available everywhere you see the ⓘ symbol.

The types of validation reports are described at

<http://www.wwpdb.org/validation/2017/FAQs#types>.

The following versions of software and data (see [references ⓘ](#)) were used in the production of this report:

MolProbity : 4.02b-467
Mogul : 1.8.4, CSD as541be (2020)
Xtriage (Phenix) : 1.13
EDS : 2.37.1
buster-report : 1.1.7 (2018)
Percentile statistics : 20191225.v01 (using entries in the PDB archive December 25th 2019)
Refmac : 5.8.0158
CCP4 : 7.0.044 (Gargrove)
Ideal geometry (proteins) : Engh & Huber (2001)
Ideal geometry (DNA, RNA) : Parkinson et al. (1996)
Validation Pipeline (wwPDB-VP) : 2.37.1

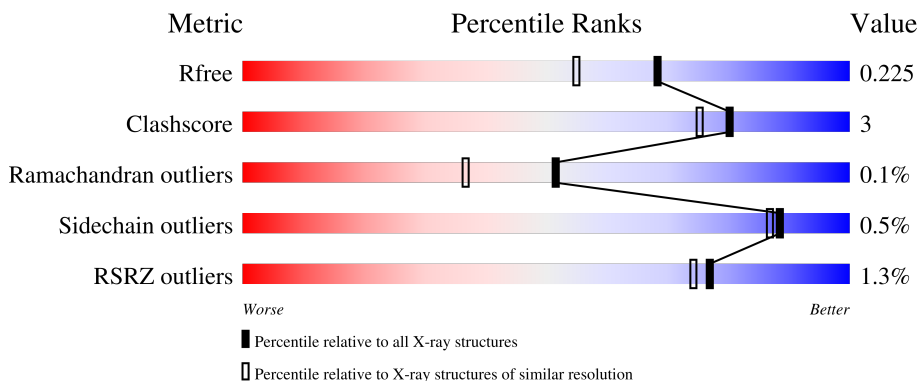
1 Overall quality at a glance

The following experimental techniques were used to determine the structure:

X-RAY DIFFRACTION

The reported resolution of this entry is 1.81 Å.

Percentile scores (ranging between 0-100) for global validation metrics of the entry are shown in the following graphic. The table shows the number of entries on which the scores are based.



Metric	Whole archive (#Entries)	Similar resolution (#Entries, resolution range(Å))
R_{free}	130704	7484 (1.84-1.80)
Clashscore	141614	8401 (1.84-1.80)
Ramachandran outliers	138981	8290 (1.84-1.80)
Sidechain outliers	138945	8290 (1.84-1.80)
RSRZ outliers	127900	7371 (1.84-1.80)

The table below summarises the geometric issues observed across the polymeric chains and their fit to the electron density. The red, orange, yellow and green segments of the lower bar indicate the fraction of residues that contain outliers for ≥ 3 , 2, 1 and 0 types of geometric quality criteria respectively. A grey segment represents the fraction of residues that are not modelled. The numeric value for each fraction is indicated below the corresponding segment, with a dot representing fractions $\leq 5\%$. The upper red bar (where present) indicates the fraction of residues that have poor fit to the electron density. The numeric value is given above the bar.

Mol	Chain	Length	Quality of chain
1	A	410	
1	B	410	

2 Entry composition [i](#)

There are 6 unique types of molecules in this entry. The entry contains 6664 atoms, of which 0 are hydrogens and 0 are deuteriums.

In the tables below, the ZeroOcc column contains the number of atoms modelled with zero occupancy, the AltConf column contains the number of residues with at least one atom in alternate conformation and the Trace column contains the number of residues modelled with at most 2 atoms.

- Molecule 1 is a protein called Cytochrome P450.

Mol	Chain	Residues	Atoms					ZeroOcc	AltConf	Trace
			Total	C	N	O	S			
1	A	389	2976	1899	514	545	18	0	2	0
1	B	388	2982	1904	509	548	21	0	3	0

There are 34 discrepancies between the modelled and reference sequences:

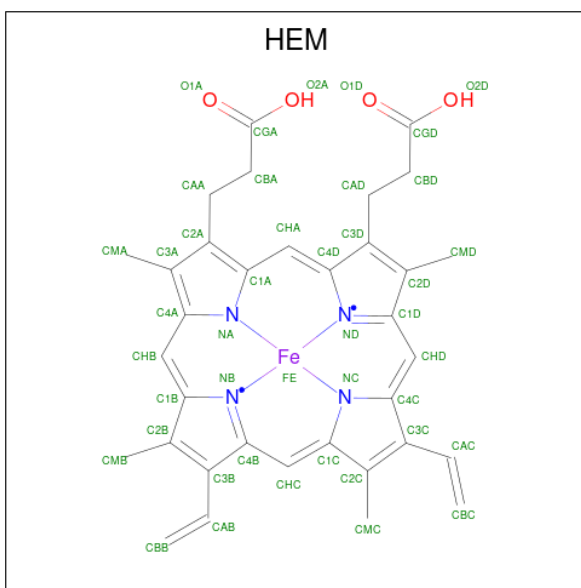
Chain	Residue	Modelled	Actual	Comment	Reference
A	394	GLY	-	expression tag	UNP A0A0F4JF04
A	395	SER	-	expression tag	UNP A0A0F4JF04
A	396	GLY	-	expression tag	UNP A0A0F4JF04
A	397	LEU	-	expression tag	UNP A0A0F4JF04
A	398	VAL	-	expression tag	UNP A0A0F4JF04
A	399	PRO	-	expression tag	UNP A0A0F4JF04
A	400	ARG	-	expression tag	UNP A0A0F4JF04
A	401	GLY	-	expression tag	UNP A0A0F4JF04
A	402	SER	-	expression tag	UNP A0A0F4JF04
A	403	HIS	-	expression tag	UNP A0A0F4JF04
A	404	HIS	-	expression tag	UNP A0A0F4JF04
A	405	HIS	-	expression tag	UNP A0A0F4JF04
A	406	HIS	-	expression tag	UNP A0A0F4JF04
A	407	HIS	-	expression tag	UNP A0A0F4JF04
A	408	HIS	-	expression tag	UNP A0A0F4JF04
A	409	HIS	-	expression tag	UNP A0A0F4JF04
A	410	HIS	-	expression tag	UNP A0A0F4JF04
B	394	GLY	-	expression tag	UNP A0A0F4JF04
B	395	SER	-	expression tag	UNP A0A0F4JF04
B	396	GLY	-	expression tag	UNP A0A0F4JF04
B	397	LEU	-	expression tag	UNP A0A0F4JF04
B	398	VAL	-	expression tag	UNP A0A0F4JF04
B	399	PRO	-	expression tag	UNP A0A0F4JF04
B	400	ARG	-	expression tag	UNP A0A0F4JF04
B	401	GLY	-	expression tag	UNP A0A0F4JF04

Continued on next page...

Continued from previous page...

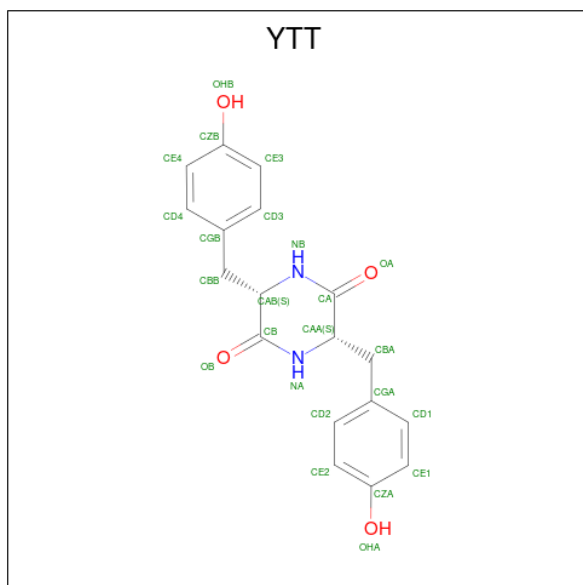
Chain	Residue	Modelled	Actual	Comment	Reference
B	402	SER	-	expression tag	UNP A0A0F4JF04
B	403	HIS	-	expression tag	UNP A0A0F4JF04
B	404	HIS	-	expression tag	UNP A0A0F4JF04
B	405	HIS	-	expression tag	UNP A0A0F4JF04
B	406	HIS	-	expression tag	UNP A0A0F4JF04
B	407	HIS	-	expression tag	UNP A0A0F4JF04
B	408	HIS	-	expression tag	UNP A0A0F4JF04
B	409	HIS	-	expression tag	UNP A0A0F4JF04
B	410	HIS	-	expression tag	UNP A0A0F4JF04

- Molecule 2 is PROTOPORPHYRIN IX CONTAINING FE (three-letter code: HEM) (formula: $C_{34}H_{32}FeN_4O_4$).



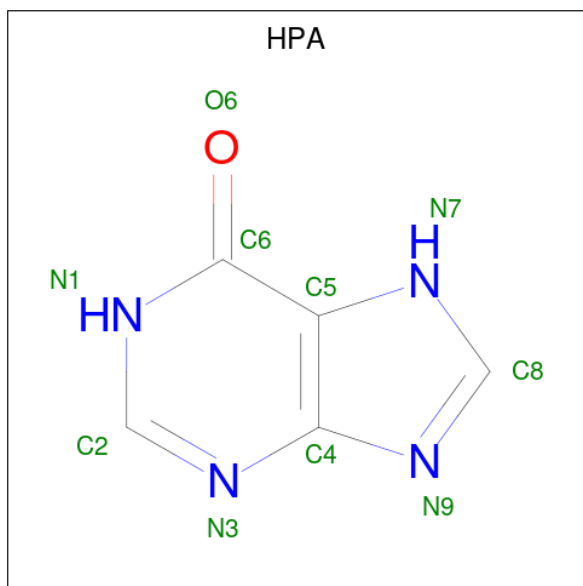
Mol	Chain	Residues	Atoms				ZeroOcc	AltConf	
2	A	1	Total	C	Fe	N	O	0	0
			43	34	1	4	4		
2	B	1	Total	C	Fe	N	O	0	0
			43	34	1	4	4		

- Molecule 3 is (3S,6S)-3,6-bis(4-hydroxybenzyl)piperazine-2,5-dione (three-letter code: YTT) (formula: $C_{18}H_{18}N_2O_4$) (labeled as "Ligand of Interest" by depositor).



Mol	Chain	Residues	Atoms				ZeroOcc	AltConf
			Total	C	N	O		
3	A	1	24	18	2	4	0	0

- Molecule 4 is HYPOXANTHINE (three-letter code: HPA) (formula: $C_5H_4N_4O$) (labeled as "Ligand of Interest" by depositor).



Mol	Chain	Residues	Atoms				ZeroOcc	AltConf
			Total	C	N	O		
4	A	1	10	5	4	1	0	0
4	B	1	10	5	4	1	0	0

Continued on next page...

Continued from previous page...

Mol	Chain	Residues	Atoms				ZeroOcc	AltConf
4	B	1	Total	C	N	O	0	0
			10	5	4	1		

- Molecule 5 is 1,2-ETHANEDIOL (three-letter code: EDO) (formula: C₂H₆O₂).



Mol	Chain	Residues	Atoms			ZeroOcc	AltConf
5	A	1	Total	C	O	0	0
			4	2	2		
5	B	1	Total	C	O	0	0
			4	2	2		
5	B	1	Total	C	O	0	0
			4	2	2		

- Molecule 6 is water.

Mol	Chain	Residues	Atoms		ZeroOcc	AltConf
6	A	291	Total	O	0	0
			291	291		
6	B	263	Total	O	0	0
			263	263		

4 Data and refinement statistics

Property	Value	Source
Space group	P 1 21 1	Depositor
Cell constants a, b, c, α , β , γ	64.83Å 95.48Å 79.45Å 90.00° 108.28° 90.00°	Depositor
Resolution (Å)	41.72 – 1.81 41.71 – 1.81	Depositor EDS
% Data completeness (in resolution range)	99.8 (41.72-1.81) 99.9 (41.71-1.81)	Depositor EDS
R_{merge}	(Not available)	Depositor
R_{sym}	(Not available)	Depositor
$\langle I/\sigma(I) \rangle$ ¹	1.36 (at 1.81Å)	Xtrriage
Refinement program	REFMAC 5.8.0258	Depositor
R, R_{free}	0.185 , 0.216 0.193 , 0.225	Depositor DCC
R_{free} test set	1678 reflections (2.00%)	wwPDB-VP
Wilson B-factor (Å ²)	24.9	Xtrriage
Anisotropy	0.645	Xtrriage
Bulk solvent k_{sol} (e/Å ³), B_{sol} (Å ²)	0.33 , 33.4	EDS
L-test for twinning ²	$\langle L \rangle = 0.50$, $\langle L^2 \rangle = 0.34$	Xtrriage
Estimated twinning fraction	No twinning to report.	Xtrriage
F_o, F_c correlation	0.97	EDS
Total number of atoms	6664	wwPDB-VP
Average B, all atoms (Å ²)	33.0	wwPDB-VP

Xtrriage's analysis on translational NCS is as follows: *The largest off-origin peak in the Patterson function is 6.30% of the height of the origin peak. No significant pseudotranslation is detected.*

¹Intensities estimated from amplitudes.

²Theoretical values of $\langle |L| \rangle$, $\langle L^2 \rangle$ for acentric reflections are 0.5, 0.333 respectively for untwinned datasets, and 0.375, 0.2 for perfectly twinned datasets.

5 Model quality [i](#)

5.1 Standard geometry [i](#)

Bond lengths and bond angles in the following residue types are not validated in this section: HEM, HPA, EDO, YTT

The Z score for a bond length (or angle) is the number of standard deviations the observed value is removed from the expected value. A bond length (or angle) with $|Z| > 5$ is considered an outlier worth inspection. RMSZ is the root-mean-square of all Z scores of the bond lengths (or angles).

Mol	Chain	Bond lengths		Bond angles	
		RMSZ	# Z >5	RMSZ	# Z >5
1	A	0.77	0/3049	0.85	0/4152
1	B	0.77	0/3055	0.88	0/4160
All	All	0.77	0/6104	0.87	0/8312

There are no bond length outliers.

There are no bond angle outliers.

There are no chirality outliers.

There are no planarity outliers.

5.2 Too-close contacts [i](#)

In the following table, the Non-H and H(model) columns list the number of non-hydrogen atoms and hydrogen atoms in the chain respectively. The H(added) column lists the number of hydrogen atoms added and optimized by MolProbity. The Clashes column lists the number of clashes within the asymmetric unit, whereas Symm-Clashes lists symmetry-related clashes.

Mol	Chain	Non-H	H(model)	H(added)	Clashes	Symm-Clashes
1	A	2976	0	2949	13	0
1	B	2982	0	2946	19	0
2	A	43	0	30	2	0
2	B	43	0	30	1	0
3	A	24	0	18	0	0
4	A	10	0	4	0	0
4	B	20	0	8	0	0
5	A	4	0	6	0	0
5	B	8	0	12	0	0
6	A	291	0	0	0	0
6	B	263	0	0	0	0
All	All	6664	0	6003	33	0

The all-atom clashscore is defined as the number of clashes found per 1000 atoms (including hydrogen atoms). The all-atom clashscore for this structure is 3.

All (33) close contacts within the same asymmetric unit are listed below, sorted by their clash magnitude.

Atom-1	Atom-2	Interatomic distance (Å)	Clash overlap (Å)
1:B:144[A]:MET:SD	1:B:351:HIS:CD2	2.72	0.83
1:B:207:ARG:HD2	1:B:217:ASP:OD1	1.87	0.74
1:B:156:ALA:HB3	1:B:157:PRO:HD3	1.72	0.72
2:A:501:HEM:HBC2	2:A:501:HEM:HMC1	1.81	0.61
2:B:501:HEM:HMC1	2:B:501:HEM:HBC2	1.85	0.58
1:B:94:ARG:O	1:B:98:MET:HG2	2.04	0.57
1:B:123[A]:MET:HE2	1:B:130:VAL:HG21	1.85	0.57
1:A:142:GLU:HB3	1:A:156:ALA:HB1	1.87	0.57
1:B:382:MET:HE3	1:B:383:LYS:HE2	1.89	0.54
1:B:11:PHE:CD1	1:B:12:PRO:HA	2.45	0.52
1:A:29:PRO:HB2	1:A:49:LEU:HD12	1.92	0.52
1:A:335:PHE:CG	1:A:345:THR:HG22	2.45	0.51
1:A:172:ARG:NH2	1:B:371:PRO:HB3	2.29	0.48
1:A:11:PHE:CD1	1:A:12:PRO:HA	2.48	0.47
1:B:335:PHE:CG	1:B:345:THR:HG22	2.50	0.47
1:B:259:HIS:HD2	1:B:261:GLU:OE1	1.96	0.47
1:B:93:LEU:HD21	1:B:223:VAL:HG21	1.95	0.47
1:B:154:GLU:O	1:B:157:PRO:HD2	2.14	0.46
1:A:172:ARG:NH1	1:B:373:GLU:OE2	2.32	0.45
1:B:144[A]:MET:SD	1:B:351:HIS:HD2	2.32	0.45
1:B:267:VAL:HG21	1:B:353:GLU:HG3	1.97	0.45
1:A:249:HIS:HB3	1:A:252:GLU:OE1	2.17	0.45
1:A:142:GLU:HG2	1:A:160[A]:SER:OG	2.17	0.44
1:B:64:THR:HG21	1:B:282:PRO:HB2	1.99	0.44
1:A:154:GLU:OE2	1:A:154:GLU:N	2.42	0.43
1:A:133:ARG:HA	1:A:137:THR:OG1	2.19	0.42
1:A:145:HIS:NE2	1:A:231:GLY:HA3	2.35	0.42
2:A:501:HEM:HBC2	2:A:501:HEM:CMC	2.50	0.42
1:A:120:VAL:HG11	1:A:362:ALA:HB3	2.01	0.41
1:B:110:GLU:OE2	1:B:110:GLU:HA	2.20	0.41
1:B:270:LEU:O	1:B:274:ASN:HB2	2.20	0.41
1:A:233:ILE:HD12	1:A:233:ILE:HA	1.96	0.40
1:B:163:LEU:N	1:B:164:PRO:CD	2.84	0.40

There are no symmetry-related clashes.

5.3 Torsion angles [i](#)

5.3.1 Protein backbone [i](#)

In the following table, the Percentiles column shows the percent Ramachandran outliers of the chain as a percentile score with respect to all X-ray entries followed by that with respect to entries of similar resolution.

The Analysed column shows the number of residues for which the backbone conformation was analysed, and the total number of residues.

Mol	Chain	Analysed	Favoured	Allowed	Outliers	Percentiles	
1	A	389/410 (95%)	386 (99%)	3 (1%)	0	100	100
1	B	389/410 (95%)	380 (98%)	8 (2%)	1 (0%)	41	27
All	All	778/820 (95%)	766 (98%)	11 (1%)	1 (0%)	51	37

All (1) Ramachandran outliers are listed below:

Mol	Chain	Res	Type
1	B	88	ILE

5.3.2 Protein sidechains [i](#)

In the following table, the Percentiles column shows the percent sidechain outliers of the chain as a percentile score with respect to all X-ray entries followed by that with respect to entries of similar resolution.

The Analysed column shows the number of residues for which the sidechain conformation was analysed, and the total number of residues.

Mol	Chain	Analysed	Rotameric	Outliers	Percentiles	
1	A	311/336 (93%)	311 (100%)	0	100	100
1	B	312/336 (93%)	309 (99%)	3 (1%)	76	70
All	All	623/672 (93%)	620 (100%)	3 (0%)	88	87

All (3) residues with a non-rotameric sidechain are listed below:

Mol	Chain	Res	Type
1	B	15	TRP
1	B	93	LEU
1	B	210	GLU

Sometimes sidechains can be flipped to improve hydrogen bonding and reduce clashes. All (4) such

sidechains are listed below:

Mol	Chain	Res	Type
1	A	351	HIS
1	A	374	GLN
1	B	259	HIS
1	B	351	HIS

5.3.3 RNA [i](#)

There are no RNA molecules in this entry.

5.4 Non-standard residues in protein, DNA, RNA chains [i](#)

There are no non-standard protein/DNA/RNA residues in this entry.

5.5 Carbohydrates [i](#)

There are no monosaccharides in this entry.

5.6 Ligand geometry [i](#)

9 ligands are modelled in this entry.

In the following table, the Counts columns list the number of bonds (or angles) for which Mogul statistics could be retrieved, the number of bonds (or angles) that are observed in the model and the number of bonds (or angles) that are defined in the Chemical Component Dictionary. The Link column lists molecule types, if any, to which the group is linked. The Z score for a bond length (or angle) is the number of standard deviations the observed value is removed from the expected value. A bond length (or angle) with $|Z| > 2$ is considered an outlier worth inspection. RMSZ is the root-mean-square of all Z scores of the bond lengths (or angles).

Mol	Type	Chain	Res	Link	Bond lengths			Bond angles		
					Counts	RMSZ	# Z > 2	Counts	RMSZ	# Z > 2
4	HPA	B	505	-	8,11,11	1.73	1 (12%)	5,15,15	3.23	3 (60%)
5	EDO	B	503	-	3,3,3	0.10	0	2,2,2	0.03	0
2	HEM	B	501	1	41,50,50	1.32	3 (7%)	45,82,82	1.73	13 (28%)
2	HEM	A	501	1	41,50,50	1.53	6 (14%)	45,82,82	1.82	12 (26%)
5	EDO	A	504	-	3,3,3	0.08	0	2,2,2	0.16	0
4	HPA	B	504	-	8,11,11	1.70	1 (12%)	5,15,15	3.32	3 (60%)
3	YTT	A	502	-	26,26,26	0.30	0	36,36,36	0.39	0
4	HPA	A	503	-	8,11,11	1.51	1 (12%)	5,15,15	3.26	3 (60%)

Mol	Type	Chain	Res	Link	Bond lengths			Bond angles		
					Counts	RMSZ	# Z > 2	Counts	RMSZ	# Z > 2
5	EDO	B	502	-	3,3,3	0.22	0	2,2,2	0.32	0

In the following table, the Chirals column lists the number of chiral outliers, the number of chiral centers analysed, the number of these observed in the model and the number defined in the Chemical Component Dictionary. Similar counts are reported in the Torsion and Rings columns. '-' means no outliers of that kind were identified.

Mol	Type	Chain	Res	Link	Chirals	Torsions	Rings
4	HPA	B	505	-	-	-	0/2/2/2
5	EDO	B	503	-	-	1/1/1/1	-
2	HEM	B	501	1	-	0/12/54/54	-
2	HEM	A	501	1	-	3/12/54/54	-
5	EDO	A	504	-	-	1/1/1/1	-
4	HPA	B	504	-	-	-	0/2/2/2
3	YTT	A	502	-	-	0/8/24/24	0/3/3/3
4	HPA	A	503	-	-	-	0/2/2/2
5	EDO	B	502	-	-	1/1/1/1	-

All (12) bond length outliers are listed below:

Mol	Chain	Res	Type	Atoms	Z	Observed(Å)	Ideal(Å)
4	B	505	HPA	C6-N1	4.06	1.40	1.33
2	A	501	HEM	C1B-NB	-3.80	1.33	1.40
4	B	504	HPA	C6-N1	3.72	1.39	1.33
4	A	503	HPA	C6-N1	3.43	1.39	1.33
2	B	501	HEM	CHB-C1B	3.34	1.43	1.35
2	A	501	HEM	C4B-NB	-3.27	1.32	1.38
2	B	501	HEM	C4D-ND	-3.20	1.34	1.40
2	A	501	HEM	C1D-ND	-3.07	1.32	1.38
2	A	501	HEM	C4D-ND	-2.82	1.35	1.40
2	A	501	HEM	FE-NB	2.69	2.10	1.96
2	B	501	HEM	C1B-NB	-2.48	1.36	1.40
2	A	501	HEM	CHB-C1B	2.39	1.41	1.35

All (34) bond angle outliers are listed below:

Mol	Chain	Res	Type	Atoms	Z	Observed(°)	Ideal(°)
4	A	503	HPA	C2-N1-C6	5.24	124.66	115.88
4	B	504	HPA	C2-N1-C6	5.01	124.28	115.88
2	A	501	HEM	CHC-C4B-NB	4.97	129.83	124.43
4	B	505	HPA	C2-N1-C6	4.90	124.09	115.88
2	A	501	HEM	C1B-NB-C4B	4.56	109.78	105.07

Continued on next page...

Continued from previous page...

Mol	Chain	Res	Type	Atoms	Z	Observed(°)	Ideal(°)
4	B	504	HPA	C4-C5-N7	-4.22	105.00	109.40
4	B	505	HPA	C4-C5-N7	-4.05	105.18	109.40
2	B	501	HEM	CHC-C4B-NB	3.80	128.56	124.43
4	A	503	HPA	C4-C5-N7	-3.65	105.59	109.40
2	B	501	HEM	CMA-C3A-C4A	-3.58	122.97	128.46
2	B	501	HEM	C4D-ND-C1D	3.53	108.72	105.07
2	B	501	HEM	CBA-CAA-C2A	3.07	117.85	112.62
4	A	503	HPA	N3-C2-N1	-3.06	123.89	128.68
4	B	504	HPA	N3-C2-N1	-3.03	123.94	128.68
2	A	501	HEM	CHA-C4D-ND	2.99	128.08	124.38
4	B	505	HPA	N3-C2-N1	-2.94	124.09	128.68
2	B	501	HEM	C1B-NB-C4B	2.89	108.05	105.07
2	A	501	HEM	CMA-C3A-C4A	-2.88	124.05	128.46
2	B	501	HEM	CHD-C1D-ND	2.55	127.20	124.43
2	B	501	HEM	C4A-C3A-C2A	2.45	108.70	107.00
2	A	501	HEM	CMB-C2B-C1B	2.42	128.72	125.04
2	B	501	HEM	CHB-C1B-NB	2.41	127.36	124.38
2	A	501	HEM	CBA-CAA-C2A	2.39	116.70	112.62
2	A	501	HEM	O2D-CGD-CBD	2.37	121.66	114.03
2	A	501	HEM	CMD-C2D-C1D	2.37	128.65	125.04
2	A	501	HEM	O2D-CGD-O1D	-2.27	117.65	123.30
2	B	501	HEM	O2D-CGD-O1D	-2.26	117.66	123.30
2	B	501	HEM	O2D-CGD-CBD	2.24	121.22	114.03
2	A	501	HEM	C4D-ND-C1D	2.23	107.38	105.07
2	B	501	HEM	CBD-CAD-C3D	-2.17	106.60	112.63
2	B	501	HEM	O2A-CGA-O1A	-2.17	117.90	123.30
2	A	501	HEM	C4A-C3A-C2A	2.13	108.48	107.00
2	A	501	HEM	CHA-C4D-C3D	-2.10	121.38	125.33
2	B	501	HEM	O2A-CGA-CBA	2.04	120.60	114.03

There are no chirality outliers.

All (6) torsion outliers are listed below:

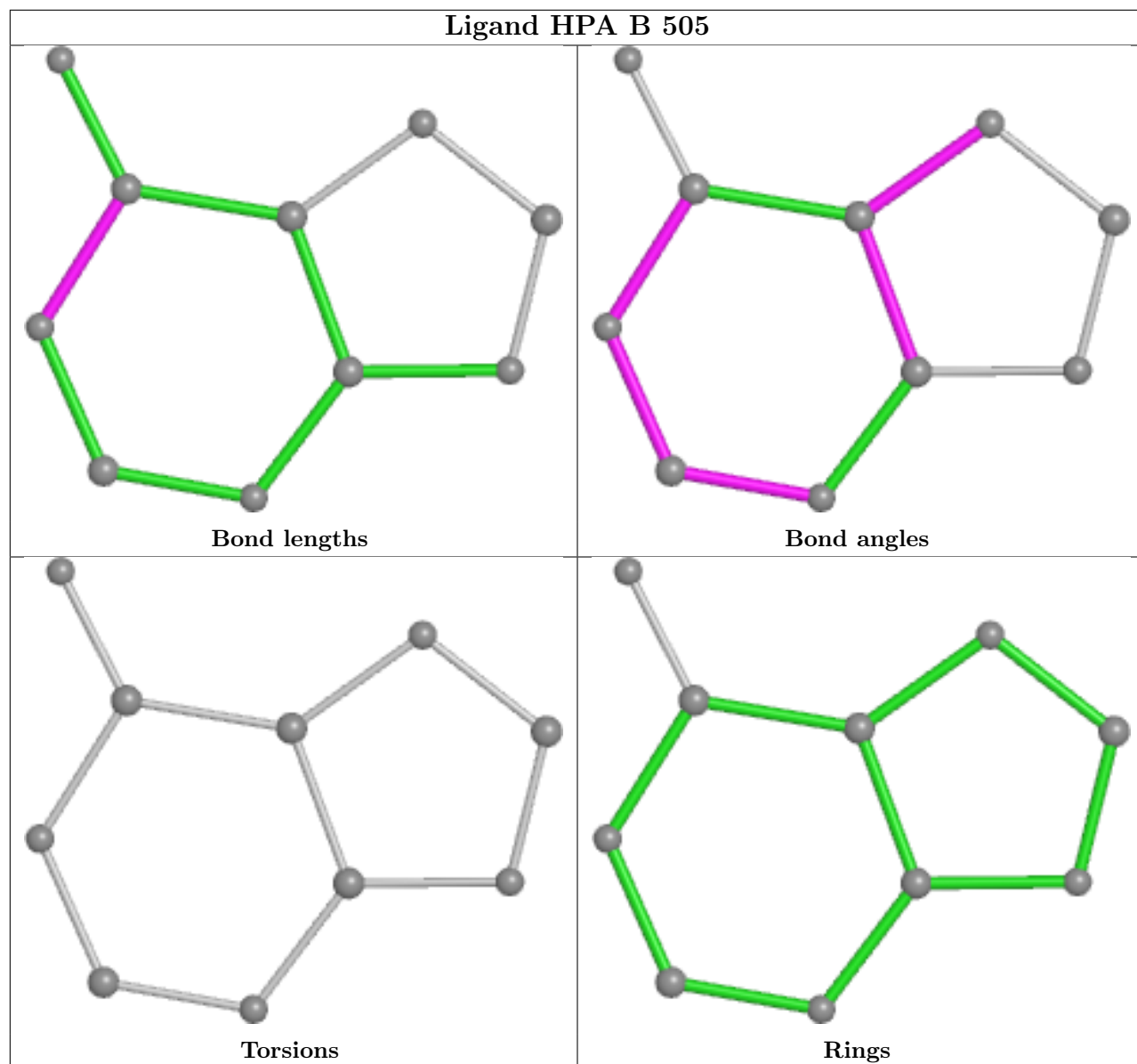
Mol	Chain	Res	Type	Atoms
5	B	503	EDO	O1-C1-C2-O2
2	A	501	HEM	CAA-CBA-CGA-O2A
5	A	504	EDO	O1-C1-C2-O2
2	A	501	HEM	CAA-CBA-CGA-O1A
5	B	502	EDO	O1-C1-C2-O2
2	A	501	HEM	CAD-CBD-CGD-O2D

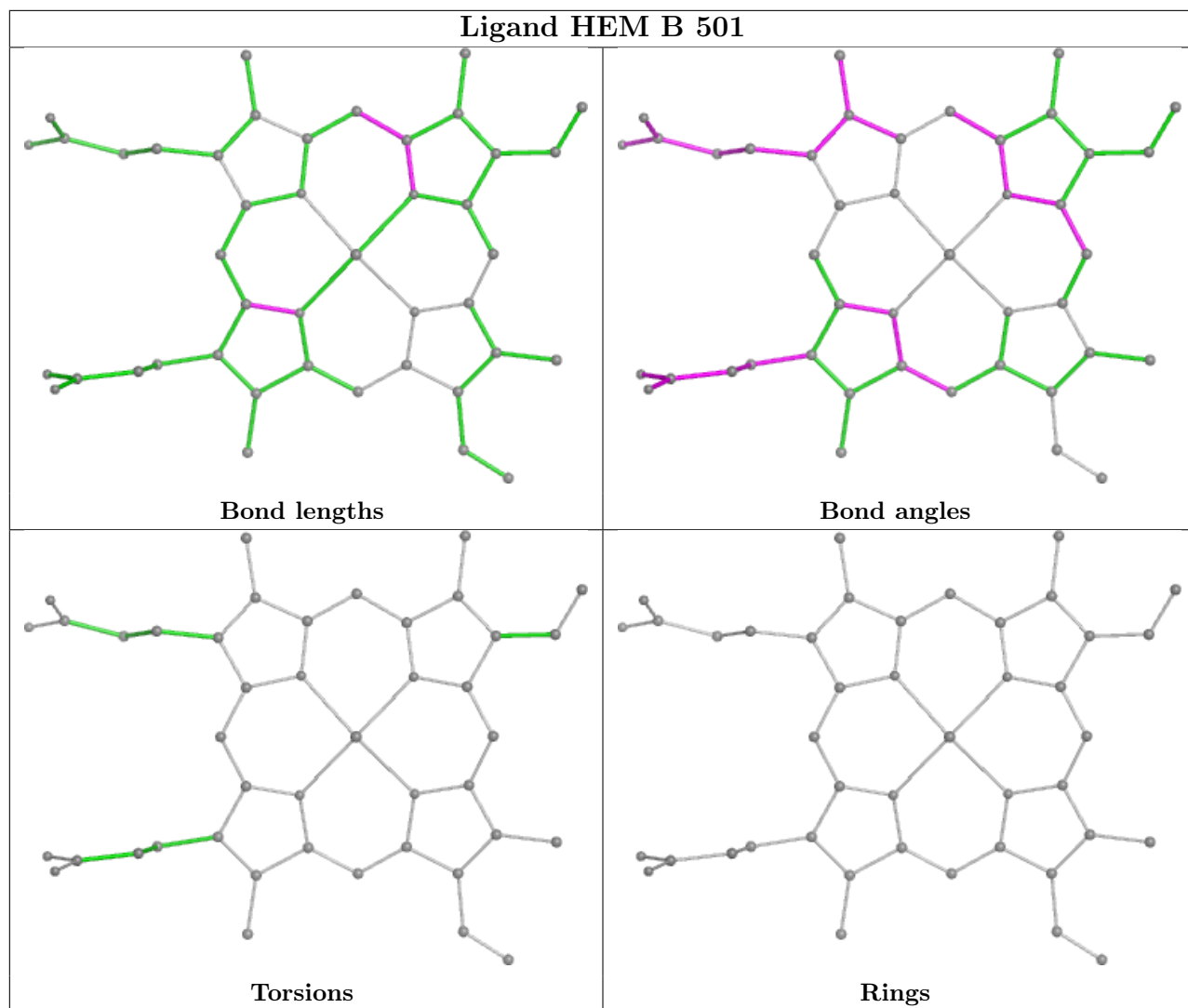
There are no ring outliers.

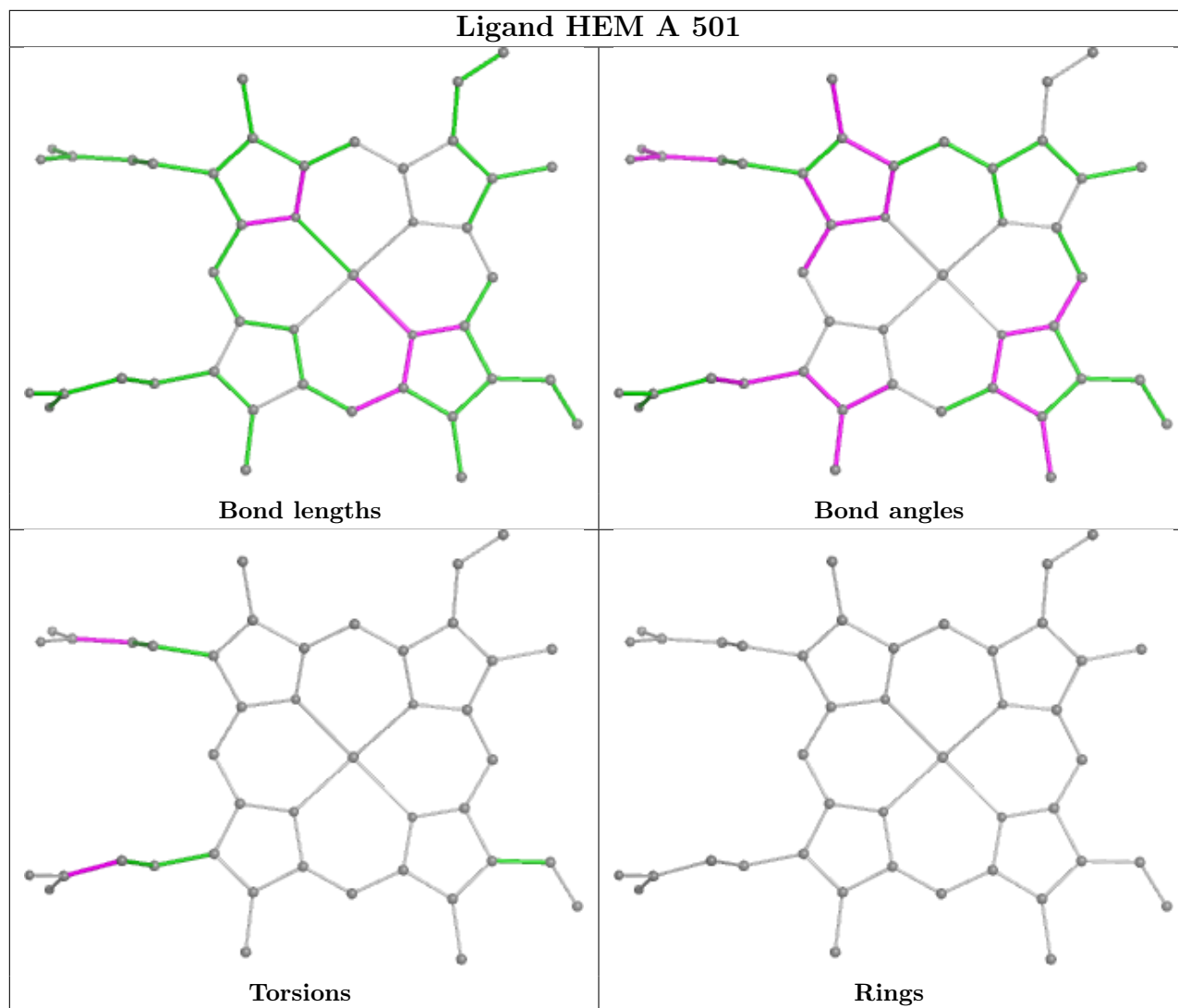
2 monomers are involved in 3 short contacts:

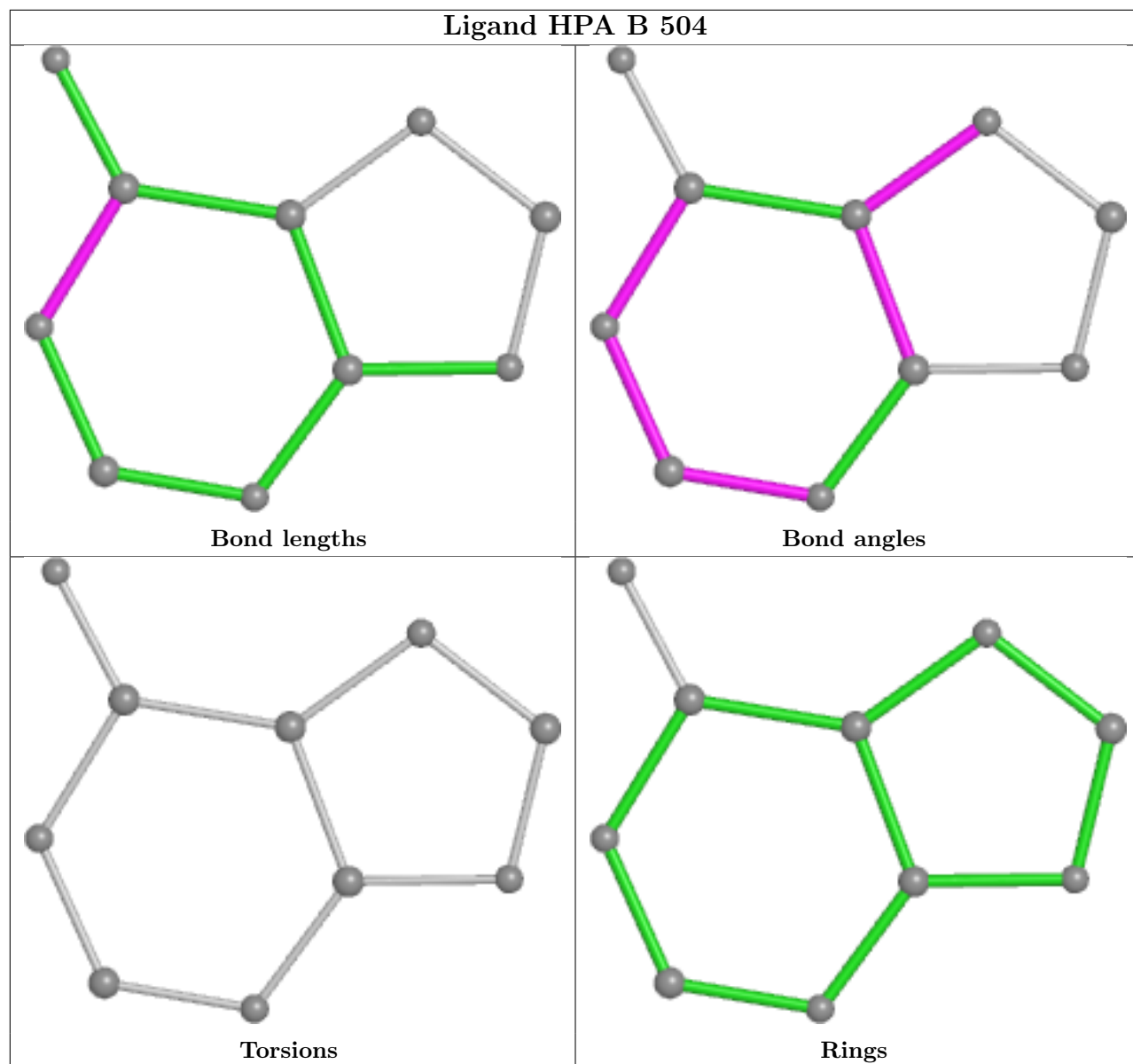
Mol	Chain	Res	Type	Clashes	Symm-Clashes
2	B	501	HEM	1	0
2	A	501	HEM	2	0

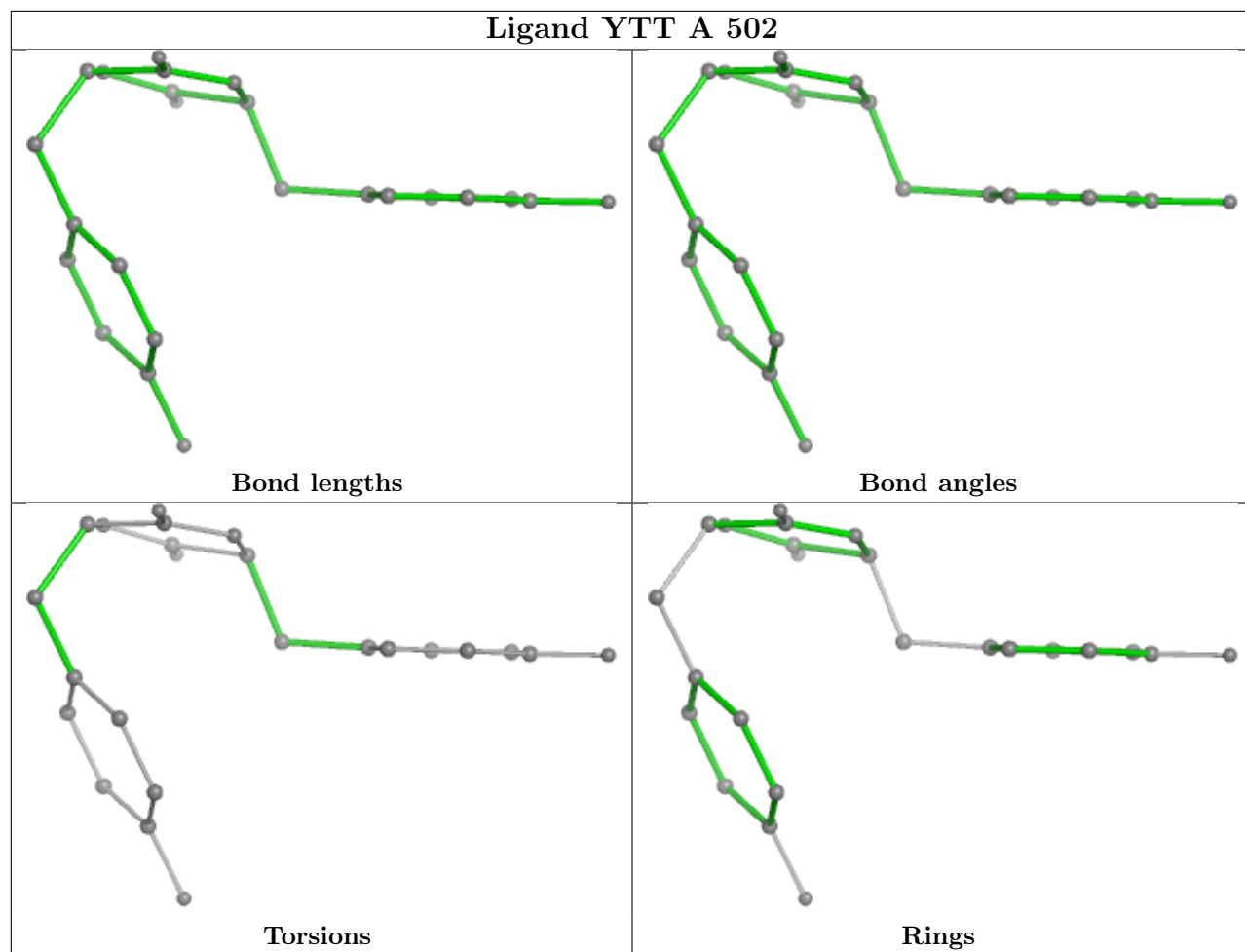
The following is a two-dimensional graphical depiction of Mogul quality analysis of bond lengths, bond angles, torsion angles, and ring geometry for all instances of the Ligand of Interest. In addition, ligands with molecular weight > 250 and outliers as shown on the validation Tables will also be included. For torsion angles, if less than 5% of the Mogul distribution of torsion angles is within 10 degrees of the torsion angle in question, then that torsion angle is considered an outlier. Any bond that is central to one or more torsion angles identified as an outlier by Mogul will be highlighted in the graph. For rings, the root-mean-square deviation (RMSD) between the ring in question and similar rings identified by Mogul is calculated over all ring torsion angles. If the average RMSD is greater than 60 degrees and the minimal RMSD between the ring in question and any Mogul-identified rings is also greater than 60 degrees, then that ring is considered an outlier. The outliers are highlighted in purple. The color gray indicates Mogul did not find sufficient equivalents in the CSD to analyse the geometry.

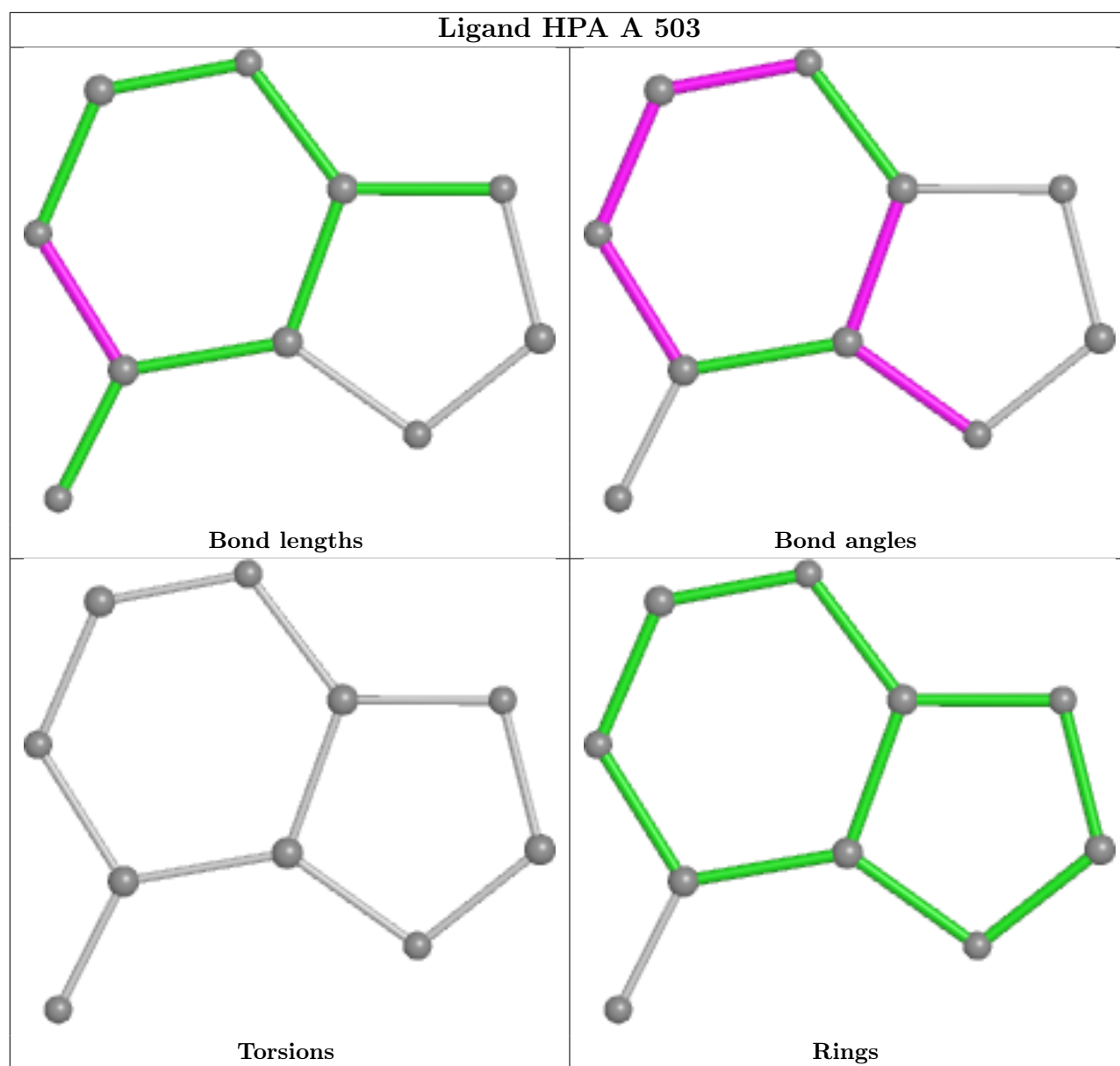












5.7 Other polymers [i](#)

There are no such residues in this entry.

5.8 Polymer linkage issues [i](#)

There are no chain breaks in this entry.

6 Fit of model and data [i](#)

6.1 Protein, DNA and RNA chains [i](#)

In the following table, the column labelled ‘#RSRZ > 2’ contains the number (and percentage) of RSRZ outliers, followed by percent RSRZ outliers for the chain as percentile scores relative to all X-ray entries and entries of similar resolution. The OWAB column contains the minimum, median, 95th percentile and maximum values of the occupancy-weighted average B-factor per residue. The column labelled ‘Q < 0.9’ lists the number of (and percentage) of residues with an average occupancy less than 0.9.

Mol	Chain	Analysed	<RSRZ>	#RSRZ>2	OWAB(Å ²)	Q<0.9
1	A	389/410 (94%)	-0.34	1 (0%) 94 92	21, 31, 47, 70	0
1	B	388/410 (94%)	-0.27	9 (2%) 60 56	21, 30, 58, 122	0
All	All	777/820 (94%)	-0.31	10 (1%) 77 74	21, 30, 53, 122	0

All (10) RSRZ outliers are listed below:

Mol	Chain	Res	Type	RSRZ
1	B	88	ILE	5.6
1	B	91	ALA	5.1
1	B	92	GLY	4.4
1	B	87	ASN	4.2
1	A	8	ILE	3.8
1	B	83	ASN	3.2
1	B	86	GLY	3.2
1	B	90	GLY	2.9
1	B	85	MET	2.5
1	B	8	ILE	2.4

6.2 Non-standard residues in protein, DNA, RNA chains [i](#)

There are no non-standard protein/DNA/RNA residues in this entry.

6.3 Carbohydrates [i](#)

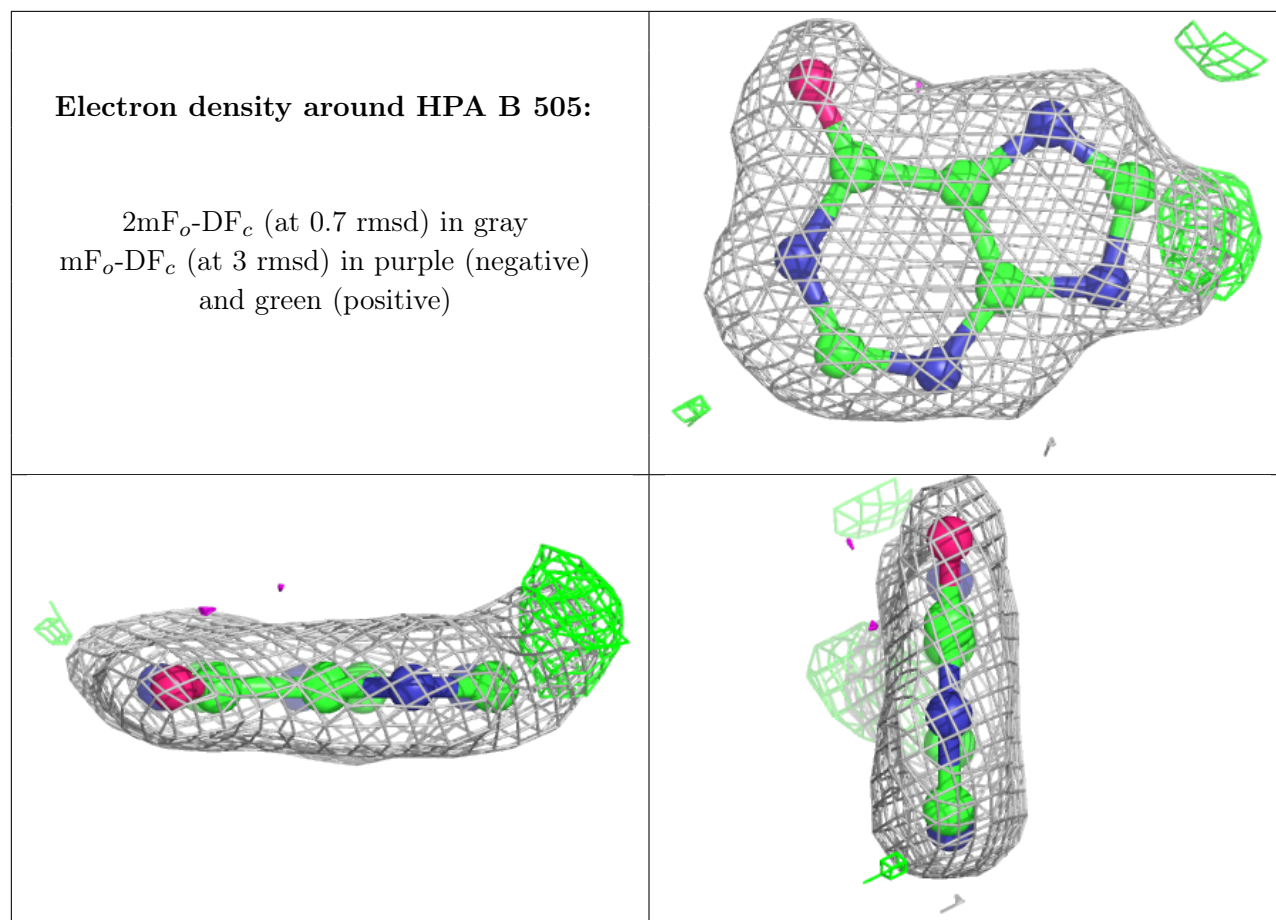
There are no monosaccharides in this entry.

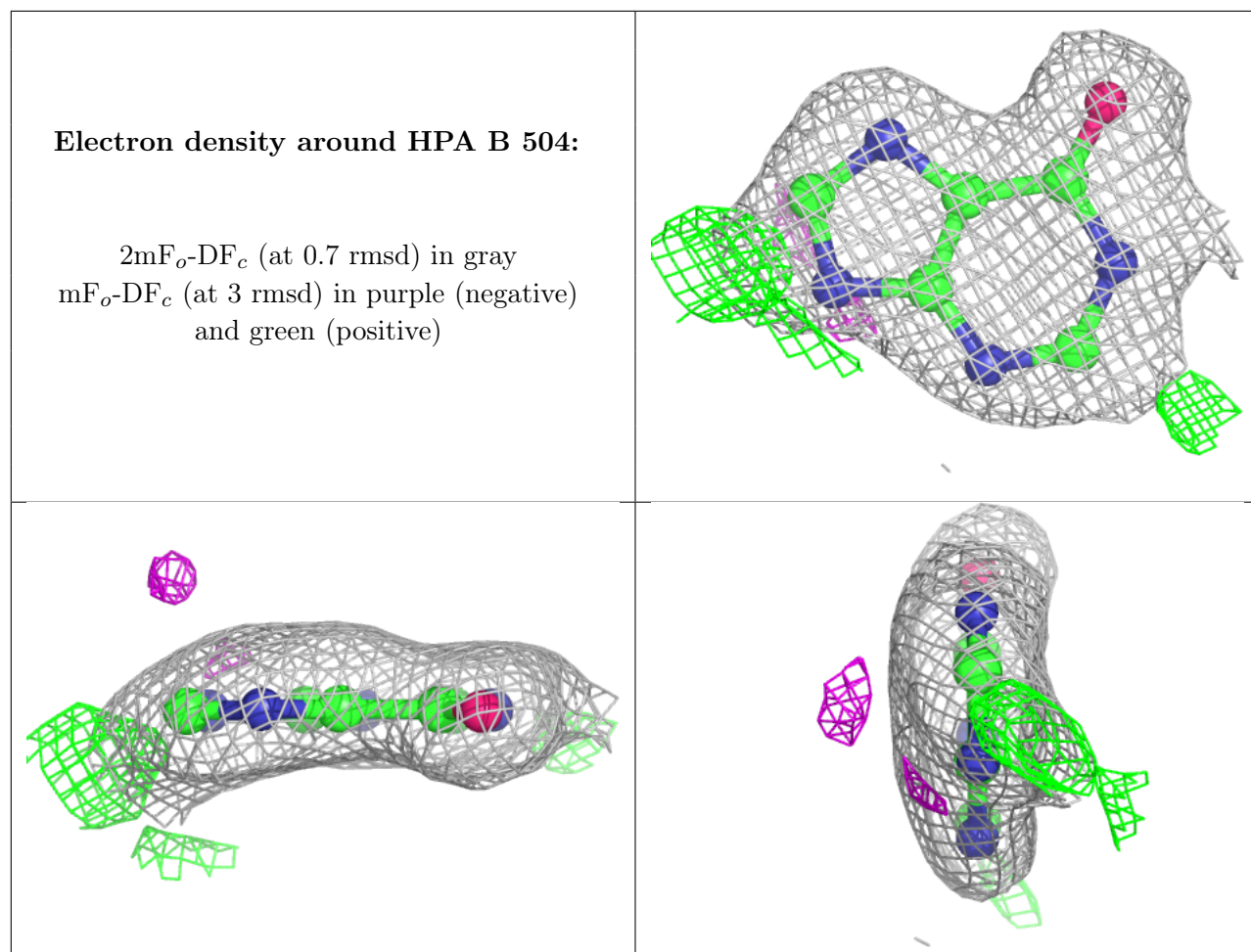
6.4 Ligands

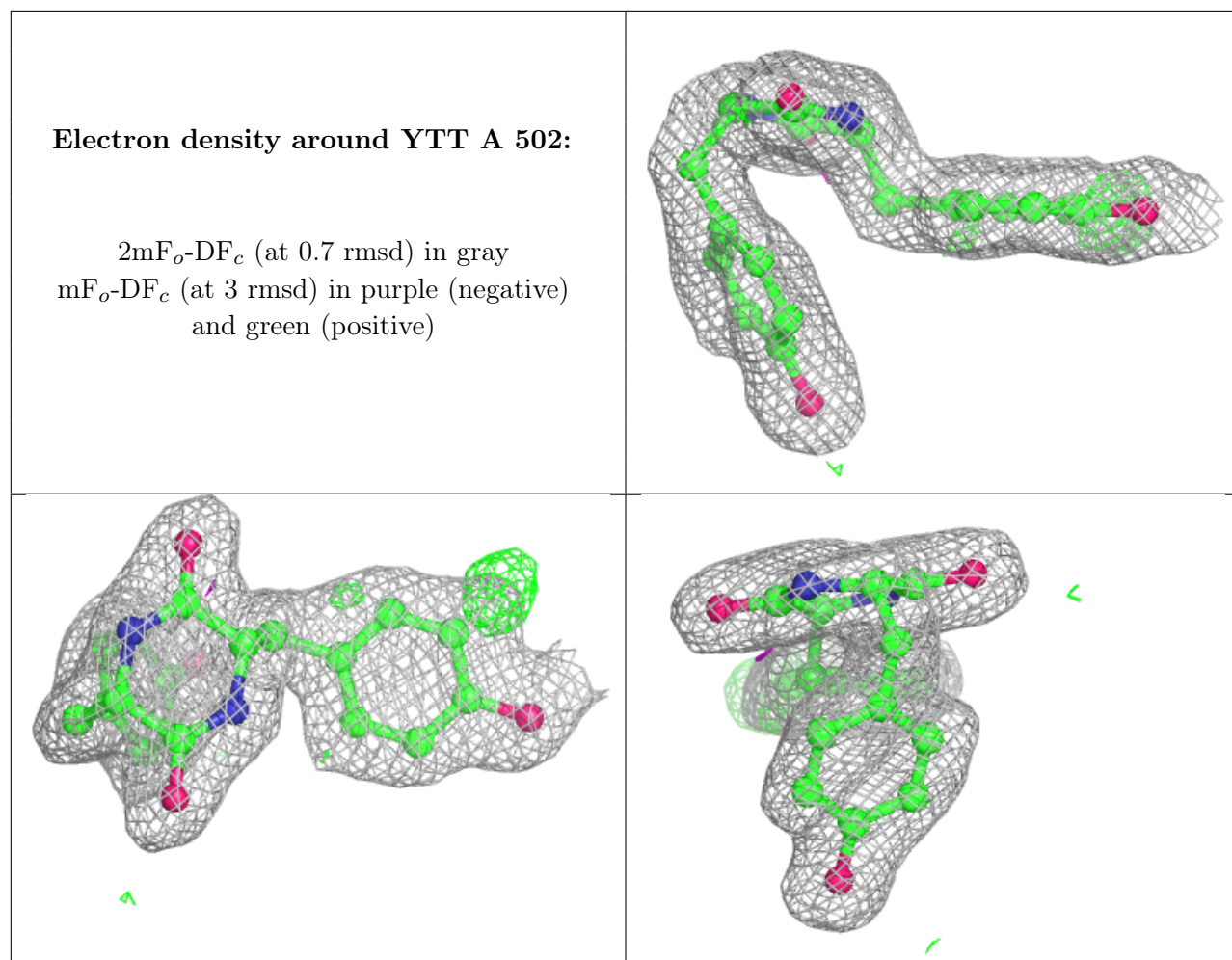
In the following table, the Atoms column lists the number of modelled atoms in the group and the number defined in the chemical component dictionary. The B-factors column lists the minimum, median, 95th percentile and maximum values of B factors of atoms in the group. The column labelled 'Q<0.9' lists the number of atoms with occupancy less than 0.9.

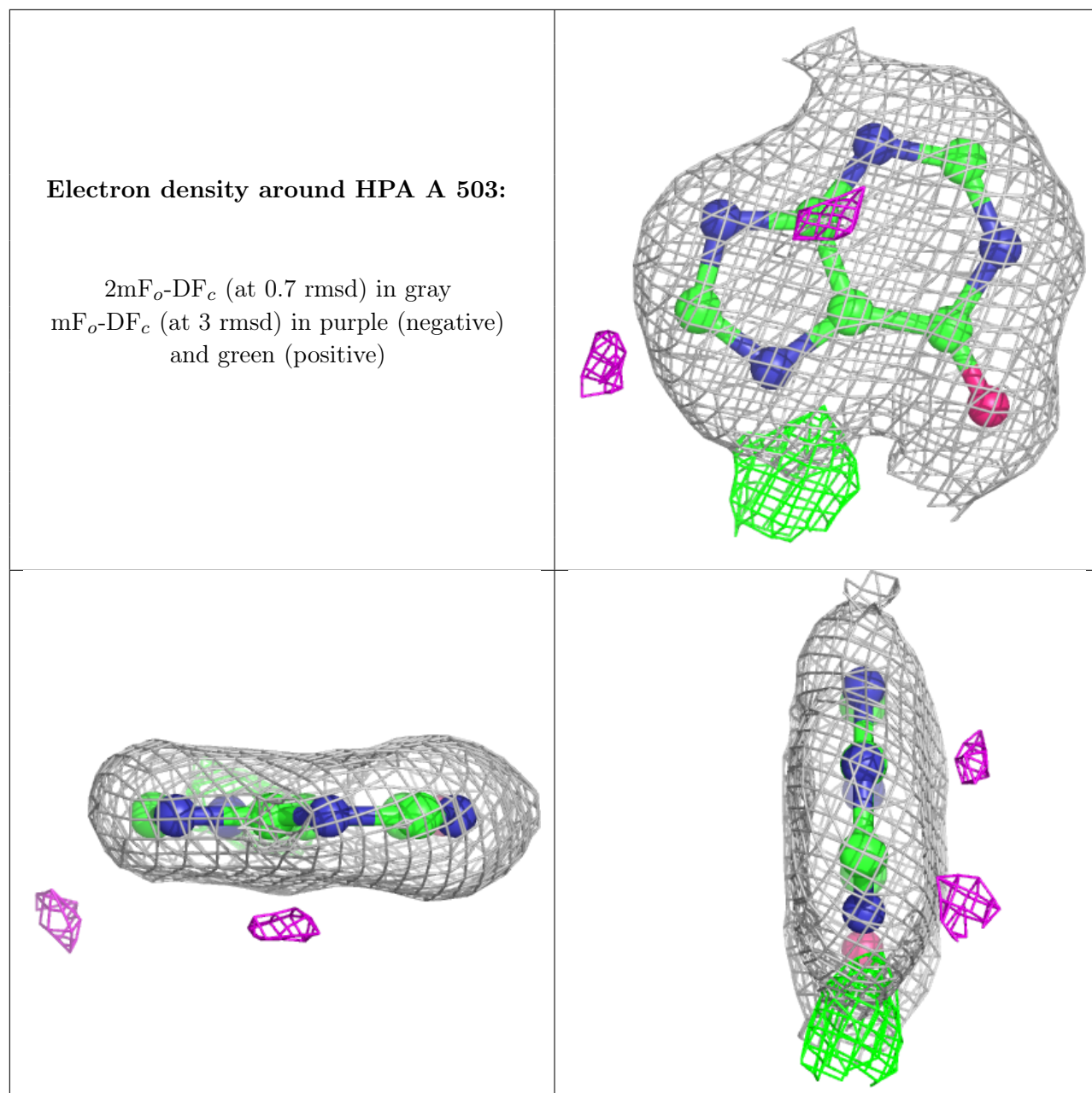
Mol	Type	Chain	Res	Atoms	RSCC	RSR	B-factors(Å ²)	Q<0.9
5	EDO	B	502	4/4	0.61	0.17	49,58,60,61	0
5	EDO	A	504	4/4	0.84	0.10	58,60,64,70	0
4	HPA	B	505	10/10	0.86	0.14	51,57,63,65	0
4	HPA	B	504	10/10	0.88	0.14	38,40,43,46	0
3	YTT	A	502	24/24	0.92	0.09	23,28,30,30	0
4	HPA	A	503	10/10	0.94	0.10	24,30,34,36	0
5	EDO	B	503	4/4	0.94	0.16	41,55,61,62	0
2	HEM	B	501	43/43	0.97	0.10	15,21,31,47	0
2	HEM	A	501	43/43	0.97	0.10	15,20,29,34	0

The following is a graphical depiction of the model fit to experimental electron density of all instances of the Ligand of Interest. In addition, ligands with molecular weight > 250 and outliers as shown on the geometry validation Tables will also be included. Each fit is shown from different orientation to approximate a three-dimensional view.



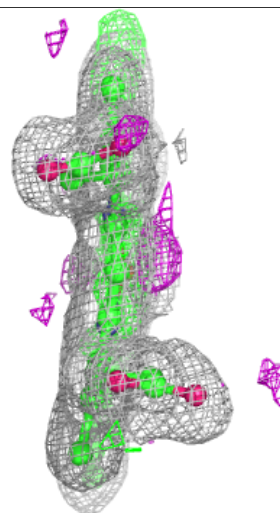
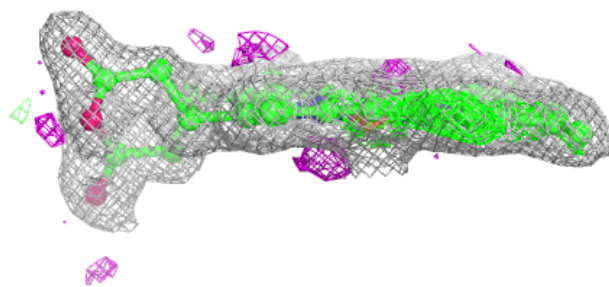
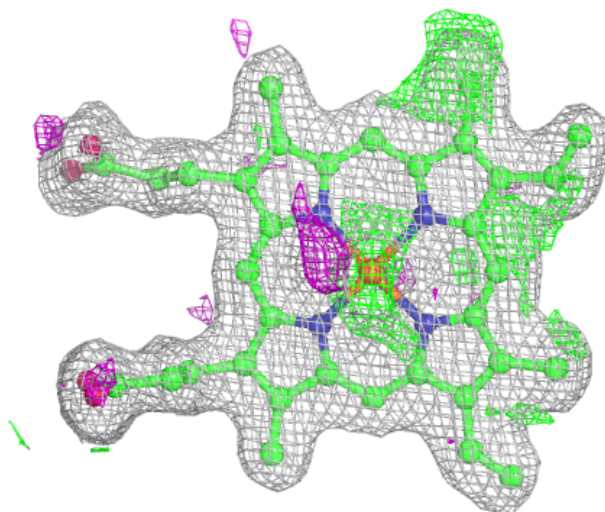


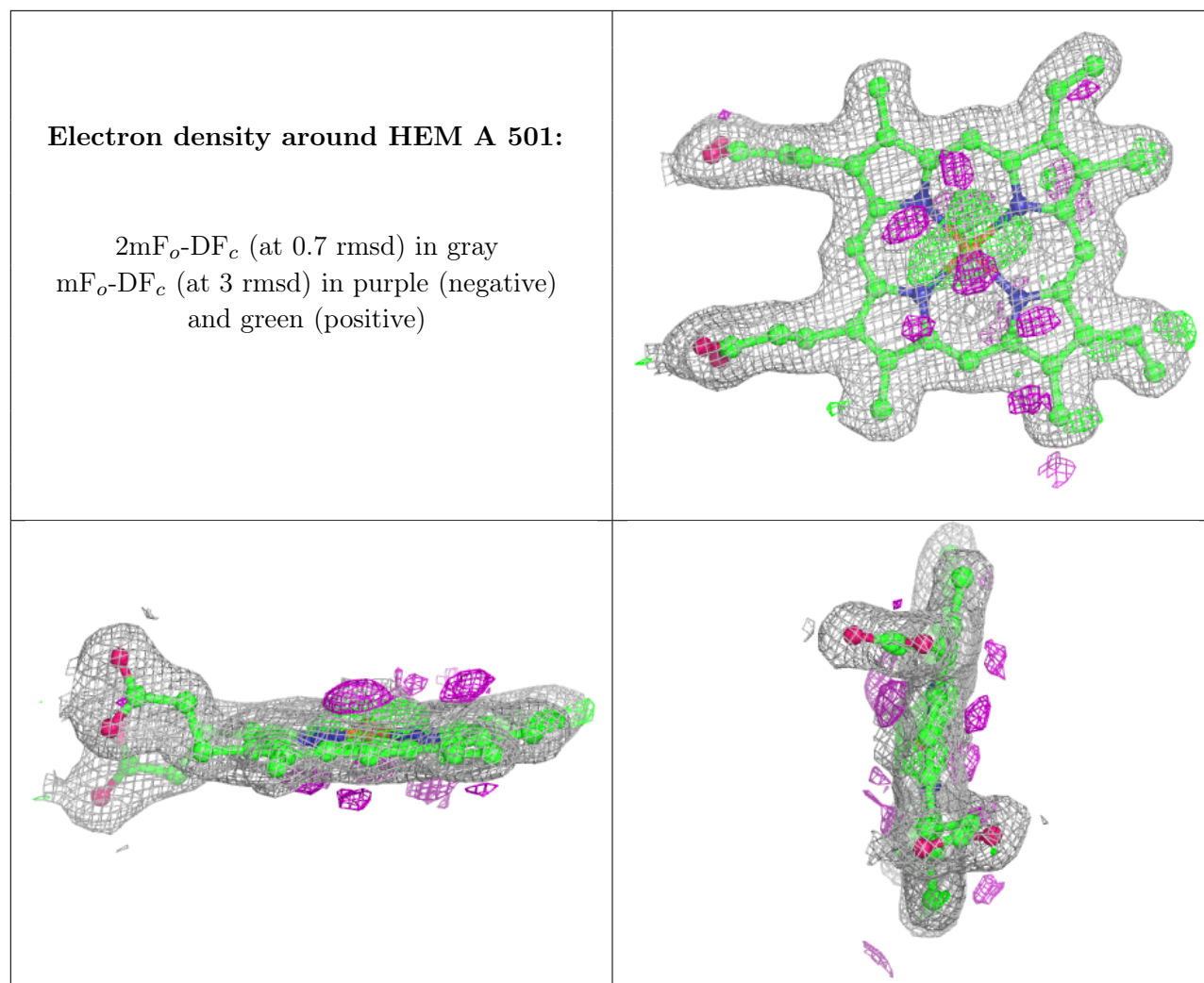




Electron density around HEM B 501:

$2mF_o-DF_c$ (at 0.7 rmsd) in gray
 mF_o-DF_c (at 3 rmsd) in purple (negative)
and green (positive)





6.5 Other polymers [i](#)

There are no such residues in this entry.