



Full wwPDB X-ray Structure Validation Report ⓘ

Feb 10, 2024 – 05:13 PM EST

PDB ID : 1Q74
Title : The Crystal Structure of 1D-myo-inositol 2-acetamido-2-deoxy-alpha-D-glucopyranoside Deacetylase (MshB)
Authors : Maynes, J.T.; Garen, C.; Cherney, M.M.; Newton, G.; Arad, D.; Av-Gay, Y.; Fahey, R.C.; James, M.N.; TB Structural Genomics Consortium (TBSGC)
Deposited on : 2003-08-15
Resolution : 1.70 Å(reported)

This is a Full wwPDB X-ray Structure Validation Report for a publicly released PDB entry.

We welcome your comments at validation@mail.wwpdb.org

A user guide is available at

<https://www.wwpdb.org/validation/2017/XrayValidationReportHelp>

with specific help available everywhere you see the ⓘ symbol.

The types of validation reports are described at

<http://www.wwpdb.org/validation/2017/FAQs#types>.

The following versions of software and data (see [references ⓘ](#)) were used in the production of this report:

MolProbity : 4.02b-467
Mogul : 1.8.5 (274361), CSD as541be (2020)
Xtriage (Phenix) : 1.13
EDS : 2.36
buster-report : 1.1.7 (2018)
Percentile statistics : 20191225.v01 (using entries in the PDB archive December 25th 2019)
Refmac : 5.8.0158
CCP4 : 7.0.044 (Gargrove)
Ideal geometry (proteins) : Engh & Huber (2001)
Ideal geometry (DNA, RNA) : Parkinson et al. (1996)
Validation Pipeline (wwPDB-VP) : 2.36

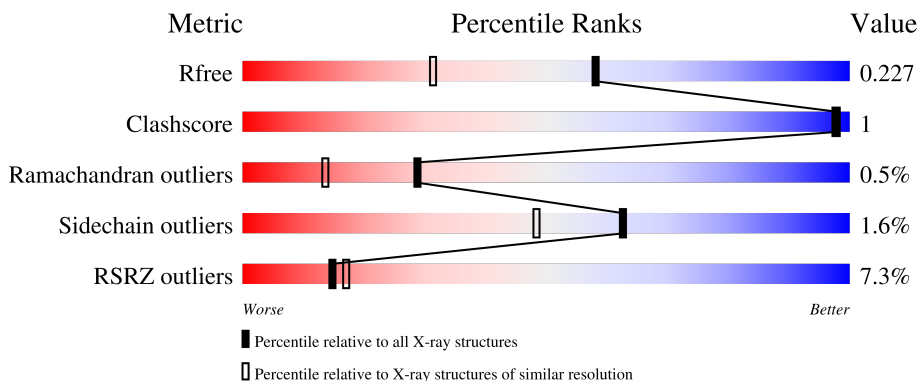
1 Overall quality at a glance

The following experimental techniques were used to determine the structure:

X-RAY DIFFRACTION

The reported resolution of this entry is 1.70 Å.

Percentile scores (ranging between 0-100) for global validation metrics of the entry are shown in the following graphic. The table shows the number of entries on which the scores are based.



Metric	Whole archive (#Entries)	Similar resolution (#Entries, resolution range(Å))
R_{free}	130704	4298 (1.70-1.70)
Clashscore	141614	4695 (1.70-1.70)
Ramachandran outliers	138981	4610 (1.70-1.70)
Sidechain outliers	138945	4610 (1.70-1.70)
RSRZ outliers	127900	4222 (1.70-1.70)

The table below summarises the geometric issues observed across the polymeric chains and their fit to the electron density. The red, orange, yellow and green segments of the lower bar indicate the fraction of residues that contain outliers for ≥ 3 , 2, 1 and 0 types of geometric quality criteria respectively. A grey segment represents the fraction of residues that are not modelled. The numeric value for each fraction is indicated below the corresponding segment, with a dot representing fractions $\leq 5\%$. The upper red bar (where present) indicates the fraction of residues that have poor fit to the electron density. The numeric value is given above the bar.

Mol	Chain	Length	Quality of chain
1	A	303	 5% (poor fit), 87% (0-3 outliers), 6% (1 outlier), 5% (2 outliers)
1	B	303	 7% (poor fit), 83% (0-3 outliers), 7% (1 outlier), 9% (2 outliers)
1	C	303	 4% (poor fit), 86% (0-3 outliers), 6% (1 outlier), 8% (2 outliers)
1	D	303	 11% (poor fit), 87% (0-3 outliers), 8% (1 outlier)

2 Entry composition

There are 4 unique types of molecules in this entry. The entry contains 9152 atoms, of which 0 are hydrogens and 0 are deuteriums.

In the tables below, the ZeroOcc column contains the number of atoms modelled with zero occupancy, the AltConf column contains the number of residues with at least one atom in alternate conformation and the Trace column contains the number of residues modelled with at most 2 atoms.

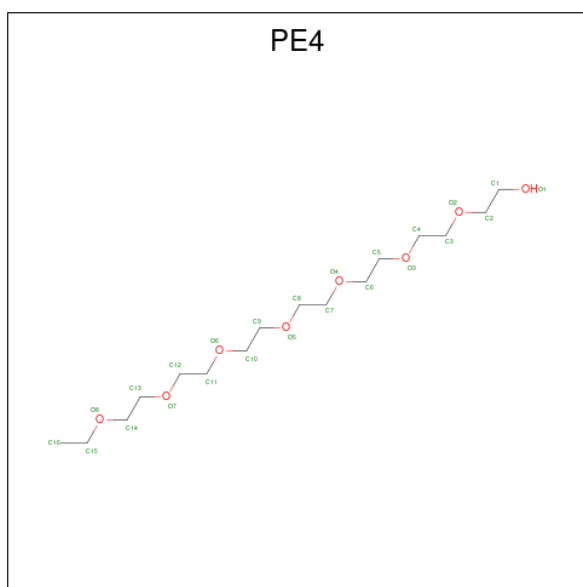
- Molecule 1 is a protein called 1D-myo-inositol 2-acetamido-2-deoxy-alpha-D-glucopyranoside Deacetylase (MshB).

Mol	Chain	Residues	Atoms					ZeroOcc	AltConf	Trace
1	A	287	Total	C	N	O	S	0	0	0
			2144	1344	392	406	2			
1	B	277	Total	C	N	O	S	0	0	0
			2071	1297	379	394	1			
1	C	279	Total	C	N	O	S	0	0	0
			2086	1305	384	396	1			
1	D	278	Total	C	N	O	S	0	0	0
			2063	1287	380	394	2			

- Molecule 2 is ZINC ION (three-letter code: ZN) (formula: Zn).

Mol	Chain	Residues	Atoms		ZeroOcc	AltConf
2	A	1	Total	Zn	0	0
			1	1		
2	B	1	Total	Zn	0	0
			1	1		
2	C	1	Total	Zn	0	0
			1	1		
2	D	1	Total	Zn	0	0
			1	1		

- Molecule 3 is 2-{2-[2-(2-{2-[2-(2-ETHOXY-ETHOXY)-ETHOXY]-ETHOXY}-ETHOXY)-ETHOXY]-ETHOXY}-ETHANOL (three-letter code: PE4) (formula: C₁₆H₃₄O₈).



Mol	Chain	Residues	Atoms		ZeroOcc	AltConf
3	A	1	Total	C O	0	0
			24	16 8		

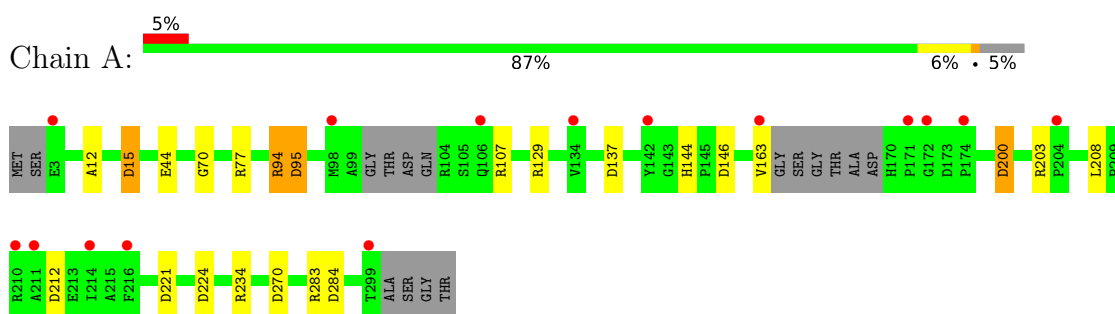
- Molecule 4 is water.

Mol	Chain	Residues	Atoms		ZeroOcc	AltConf
4	A	214	Total	O	0	0
			214	214		
4	B	211	Total	O	0	0
			211	211		
4	C	215	Total	O	0	0
			215	215		
4	D	120	Total	O	0	0
			120	120		

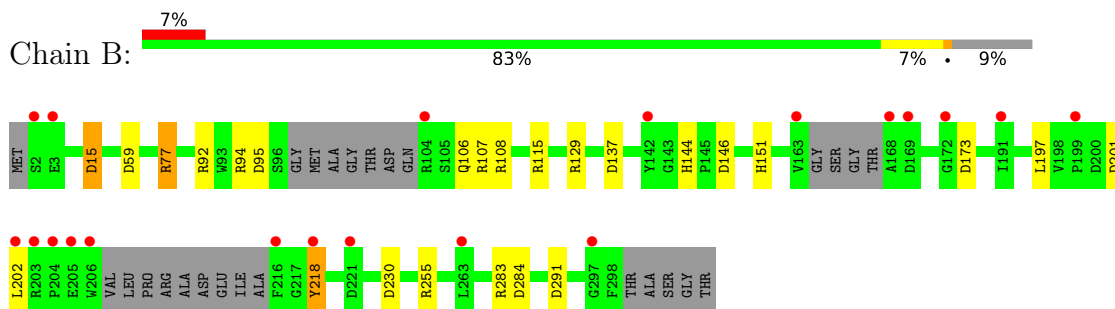
3 Residue-property plots [i](#)

These plots are drawn for all protein, RNA, DNA and oligosaccharide chains in the entry. The first graphic for a chain summarises the proportions of the various outlier classes displayed in the second graphic. The second graphic shows the sequence view annotated by issues in geometry and electron density. Residues are color-coded according to the number of geometric quality criteria for which they contain at least one outlier: green = 0, yellow = 1, orange = 2 and red = 3 or more. A red dot above a residue indicates a poor fit to the electron density ($RSRZ > 2$). Stretches of 2 or more consecutive residues without any outlier are shown as a green connector. Residues present in the sample, but not in the model, are shown in grey.

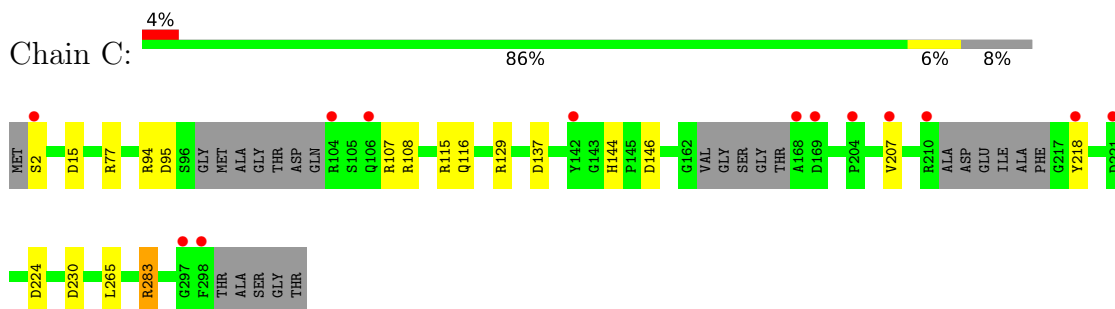
- Molecule 1: 1D-myo-inositol 2-acetamido-2-deoxy-alpha-D-glucopyranoside Deacetylase (MshB)



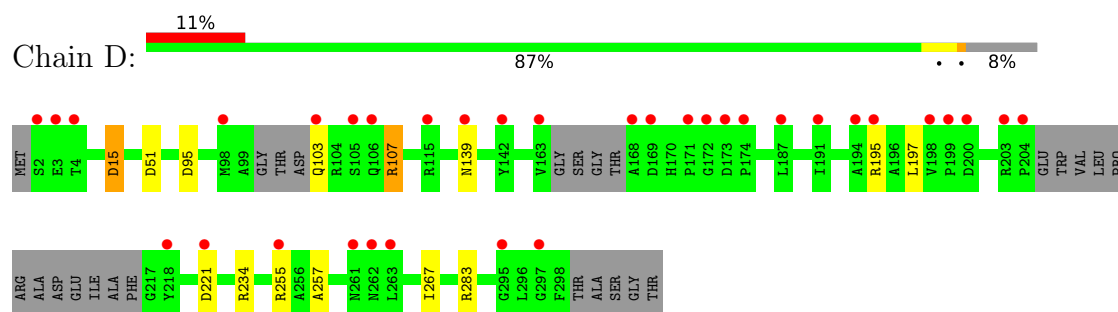
- Molecule 1: 1D-myo-inositol 2-acetamido-2-deoxy-alpha-D-glucopyranoside Deacetylase (MshB)



- Molecule 1: 1D-myo-inositol 2-acetamido-2-deoxy-alpha-D-glucopyranoside Deacetylase (MshB)



- Molecule 1: 1D-myo-inositol 2-acetamido-2-deoxy-alpha-D-glucopyranoside Deacetylase (MshB)



4 Data and refinement statistics

Property	Value	Source
Space group	P 1	Depositor
Cell constants a, b, c, α , β , γ	56.79Å 73.96Å 85.59Å 102.09° 108.16° 97.18°	Depositor
Resolution (Å)	19.84 – 1.70 19.83 – 1.70	Depositor EDS
% Data completeness (in resolution range)	96.3 (19.84-1.70) 96.3 (19.83-1.70)	Depositor EDS
R_{merge}	0.05	Depositor
R_{sym}	0.05	Depositor
$\langle I/\sigma(I) \rangle$ ¹	2.86 (at 1.70Å)	Xtrriage
Refinement program	REFMAC 5.0	Depositor
R, R_{free}	0.194 , 0.228 0.202 , 0.227	Depositor DCC
R_{free} test set	6745 reflections (5.03%)	wwPDB-VP
Wilson B-factor (Å ²)	19.1	Xtrriage
Anisotropy	0.010	Xtrriage
Bulk solvent k_{sol} (e/Å ³), B_{sol} (Å ²)	0.40 , 55.1	EDS
L-test for twinning ²	$\langle L \rangle = 0.50$, $\langle L^2 \rangle = 0.33$	Xtrriage
Estimated twinning fraction	No twinning to report.	Xtrriage
F_o, F_c correlation	0.95	EDS
Total number of atoms	9152	wwPDB-VP
Average B, all atoms (Å ²)	23.0	wwPDB-VP

Xtrriage's analysis on translational NCS is as follows: *The largest off-origin peak in the Patterson function is 5.79% of the height of the origin peak. No significant pseudotranslation is detected.*

¹Intensities estimated from amplitudes.

²Theoretical values of $\langle |L| \rangle$, $\langle L^2 \rangle$ for acentric reflections are 0.5, 0.333 respectively for untwinned datasets, and 0.375, 0.2 for perfectly twinned datasets.

5 Model quality i

5.1 Standard geometry i

Bond lengths and bond angles in the following residue types are not validated in this section: ZN, PE4

The Z score for a bond length (or angle) is the number of standard deviations the observed value is removed from the expected value. A bond length (or angle) with $|Z| > 5$ is considered an outlier worth inspection. RMSZ is the root-mean-square of all Z scores of the bond lengths (or angles).

Mol	Chain	Bond lengths		Bond angles	
		RMSZ	# Z >5	RMSZ	# Z >5
1	A	0.92	1/2194 (0.0%)	1.10	21/3000 (0.7%)
1	B	0.93	0/2119	1.15	23/2896 (0.8%)
1	C	0.90	0/2134	1.12	14/2917 (0.5%)
1	D	0.81	0/2108	1.10	11/2879 (0.4%)
All	All	0.89	1/8555 (0.0%)	1.12	69/11692 (0.6%)

All (1) bond length outliers are listed below:

Mol	Chain	Res	Type	Atoms	Z	Observed(Å)	Ideal(Å)
1	A	12	ALA	CA-CB	-5.03	1.41	1.52

All (69) bond angle outliers are listed below:

Mol	Chain	Res	Type	Atoms	Z	Observed(°)	Ideal(°)
1	D	234	ARG	NE-CZ-NH2	-10.48	115.06	120.30
1	D	234	ARG	NE-CZ-NH1	10.07	125.33	120.30
1	A	200	ASP	CB-CG-OD2	9.86	127.17	118.30
1	C	107	ARG	NE-CZ-NH1	9.68	125.14	120.30
1	C	107	ARG	NE-CZ-NH2	-9.53	115.53	120.30
1	B	95	ASP	CB-CG-OD1	9.17	126.55	118.30
1	C	137	ASP	CB-CG-OD1	9.04	126.44	118.30
1	A	107	ARG	NE-CZ-NH2	-8.68	115.96	120.30
1	C	283	ARG	NE-CZ-NH2	-8.40	116.10	120.30
1	D	95	ASP	CB-CG-OD2	8.33	125.80	118.30
1	C	94	ARG	NE-CZ-NH1	7.96	124.28	120.30
1	B	230	ASP	CB-CG-OD1	7.88	125.39	118.30
1	B	94	ARG	NE-CZ-NH1	7.69	124.15	120.30
1	A	224	ASP	CB-CG-OD2	7.66	125.19	118.30
1	B	107	ARG	NE-CZ-NH1	7.64	124.12	120.30
1	B	137	ASP	CB-CG-OD1	7.39	124.96	118.30

Continued on next page...

Continued from previous page...

Mol	Chain	Res	Type	Atoms	Z	Observed(°)	Ideal(°)
1	A	94	ARG	NE-CZ-NH1	7.34	123.97	120.30
1	B	115	ARG	NE-CZ-NH1	7.27	123.93	120.30
1	B	291	ASP	CB-CG-OD1	7.26	124.83	118.30
1	C	283	ARG	NE-CZ-NH1	7.02	123.81	120.30
1	B	284	ASP	CB-CG-OD1	7.00	124.60	118.30
1	B	15	ASP	CB-CG-OD1	6.96	124.56	118.30
1	B	255	ARG	NE-CZ-NH2	-6.93	116.83	120.30
1	B	108	ARG	NE-CZ-NH1	6.92	123.76	120.30
1	D	107	ARG	NE-CZ-NH1	6.58	123.59	120.30
1	B	59	ASP	CB-CG-OD2	6.57	124.22	118.30
1	A	234	ARG	NE-CZ-NH1	6.40	123.50	120.30
1	D	195	ARG	NE-CZ-NH1	6.33	123.46	120.30
1	A	137	ASP	CB-CG-OD1	6.30	123.97	118.30
1	A	77	ARG	NE-CZ-NH1	6.27	123.44	120.30
1	A	221	ASP	CB-CG-OD2	6.26	123.94	118.30
1	C	129	ARG	NE-CZ-NH1	6.19	123.39	120.30
1	B	107	ARG	NE-CZ-NH2	-6.09	117.25	120.30
1	A	234	ARG	NE-CZ-NH2	-6.08	117.26	120.30
1	B	77	ARG	CB-CG-CD	6.07	127.38	111.60
1	D	15	ASP	CB-CG-OD1	5.98	123.68	118.30
1	A	94	ARG	NE-CZ-NH2	-5.92	117.34	120.30
1	B	255	ARG	NE-CZ-NH1	5.83	123.22	120.30
1	A	107	ARG	NE-CZ-NH1	5.76	123.18	120.30
1	A	15	ASP	N-CA-CB	5.75	120.95	110.60
1	C	77	ARG	NE-CZ-NH1	5.74	123.17	120.30
1	B	283	ARG	NE-CZ-NH2	-5.73	117.44	120.30
1	C	115	ARG	NE-CZ-NH2	-5.70	117.45	120.30
1	D	255	ARG	NE-CZ-NH1	5.67	123.14	120.30
1	C	230	ASP	CB-CG-OD1	5.65	123.39	118.30
1	A	107	ARG	CG-CD-NE	-5.63	99.97	111.80
1	A	283	ARG	NE-CZ-NH1	5.58	123.09	120.30
1	A	284	ASP	CB-CG-OD1	5.57	123.31	118.30
1	C	94	ARG	NE-CZ-NH2	-5.55	117.53	120.30
1	B	92	ARG	NE-CZ-NH2	-5.49	117.55	120.30
1	B	173	ASP	CB-CG-OD2	5.46	123.22	118.30
1	B	15	ASP	N-CA-CB	5.46	120.43	110.60
1	D	221	ASP	CB-CG-OD2	5.46	123.21	118.30
1	B	108	ARG	NE-CZ-NH2	-5.45	117.58	120.30
1	A	95	ASP	CB-CG-OD2	5.38	123.14	118.30
1	B	201	ASP	CB-CG-OD2	5.36	123.12	118.30
1	C	224	ASP	CB-CG-OD2	5.34	123.11	118.30
1	C	95	ASP	N-CA-CB	-5.24	101.17	110.60

Continued on next page...

Continued from previous page...

Mol	Chain	Res	Type	Atoms	Z	Observed(°)	Ideal(°)
1	A	270	ASP	CB-CG-OD2	5.22	123.00	118.30
1	B	129	ARG	NE-CZ-NH1	5.22	122.91	120.30
1	D	283	ARG	NE-CZ-NH1	5.20	122.90	120.30
1	A	212	ASP	CB-CG-OD2	5.19	122.97	118.30
1	A	129	ARG	NE-CZ-NH1	5.16	122.88	120.30
1	A	95	ASP	CB-CG-OD1	-5.14	113.67	118.30
1	C	108	ARG	NE-CZ-NH1	5.14	122.87	120.30
1	D	51	ASP	CB-CG-OD1	5.11	122.90	118.30
1	D	15	ASP	N-CA-CB	5.09	119.76	110.60
1	B	77	ARG	CG-CD-NE	5.05	122.40	111.80
1	A	203	ARG	NE-CZ-NH1	5.01	122.80	120.30

There are no chirality outliers.

There are no planarity outliers.

5.2 Too-close contacts [i](#)

In the following table, the Non-H and H(model) columns list the number of non-hydrogen atoms and hydrogen atoms in the chain respectively. The H(added) column lists the number of hydrogen atoms added and optimized by MolProbity. The Clashes column lists the number of clashes within the asymmetric unit, whereas Symm-Clashes lists symmetry-related clashes.

Mol	Chain	Non-H	H(model)	H(added)	Clashes	Symm-Clashes
1	A	2144	0	2074	5	0
1	B	2071	0	1992	2	1
1	C	2086	0	2014	4	0
1	D	2063	0	1992	1	0
2	A	1	0	0	0	0
2	B	1	0	0	0	0
2	C	1	0	0	0	0
2	D	1	0	0	0	0
3	A	24	0	34	1	0
4	A	214	0	0	1	3
4	B	211	0	0	0	3
4	C	215	0	0	2	4
4	D	120	0	0	0	3
All	All	9152	0	8106	12	7

The all-atom clashscore is defined as the number of clashes found per 1000 atoms (including hydrogen atoms). The all-atom clashscore for this structure is 1.

All (12) close contacts within the same asymmetric unit are listed below, sorted by their clash

magnitude.

Atom-1	Atom-2	Interatomic distance (Å)	Clash overlap (Å)
1:A:200:ASP:OD1	4:A:1014:HOH:O	2.08	0.71
1:A:144:HIS:HD2	1:A:146:ASP:H	1.53	0.57
1:C:116:GLN:NE2	4:C:427:HOH:O	2.38	0.56
1:C:144:HIS:CD2	1:C:146:ASP:H	2.26	0.53
1:A:44:GLU:OE1	1:A:94:ARG:NH1	2.43	0.52
1:C:144:HIS:HD2	1:C:146:ASP:H	1.58	0.50
1:B:151:HIS:C	1:B:151:HIS:CD2	2.87	0.48
1:A:95:ASP:OD1	1:A:95:ASP:N	2.51	0.42
1:D:257:ALA:HB2	1:D:267:ILE:HD11	2.02	0.41
1:C:283:ARG:NE	4:C:482:HOH:O	2.44	0.40
1:A:70:GLY:HA3	3:A:800:PE4:O5	2.22	0.40
1:B:144:HIS:CD2	1:B:146:ASP:H	2.40	0.40

All (7) symmetry-related close contacts are listed below. The label for Atom-2 includes the symmetry operator and encoded unit-cell translations to be applied.

Atom-1	Atom-2	Interatomic distance (Å)	Clash overlap (Å)
4:B:438:HOH:O	4:C:518:HOH:O[1_655]	2.00	0.20
4:A:1014:HOH:O	4:D:326:HOH:O[1_554]	2.01	0.19
4:B:334:HOH:O	4:C:481:HOH:O[1_554]	2.02	0.18
4:B:384:HOH:O	4:C:518:HOH:O[1_655]	2.02	0.18
1:B:106:GLN:OE1	4:C:518:HOH:O[1_655]	2.06	0.14
4:A:1014:HOH:O	4:D:332:HOH:O[1_554]	2.14	0.06
4:A:881:HOH:O	4:D:418:HOH:O[1_554]	2.18	0.02

5.3 Torsion angles [i](#)

5.3.1 Protein backbone [i](#)

In the following table, the Percentiles column shows the percent Ramachandran outliers of the chain as a percentile score with respect to all X-ray entries followed by that with respect to entries of similar resolution.

The Analysed column shows the number of residues for which the backbone conformation was analysed, and the total number of residues.

Mol	Chain	Analysed	Favoured	Allowed	Outliers	Percentiles
1	A	281/303 (93%)	279 (99%)	1 (0%)	1 (0%)	34 18
1	B	269/303 (89%)	263 (98%)	4 (2%)	2 (1%)	22 8

Continued on next page...

Continued from previous page...

Mol	Chain	Analysed	Favoured	Allowed	Outliers	Percentiles	
1	C	271/303 (89%)	266 (98%)	3 (1%)	2 (1%)	22	8
1	D	270/303 (89%)	264 (98%)	5 (2%)	1 (0%)	34	18
All	All	1091/1212 (90%)	1072 (98%)	13 (1%)	6 (0%)	29	13

All (6) Ramachandran outliers are listed below:

Mol	Chain	Res	Type
1	A	15	ASP
1	B	15	ASP
1	B	218	TYR
1	C	15	ASP
1	C	218	TYR
1	D	15	ASP

5.3.2 Protein sidechains [i](#)

In the following table, the Percentiles column shows the percent sidechain outliers of the chain as a percentile score with respect to all X-ray entries followed by that with respect to entries of similar resolution.

The Analysed column shows the number of residues for which the sidechain conformation was analysed, and the total number of residues.

Mol	Chain	Analysed	Rotameric	Outliers	Percentiles	
1	A	211/221 (96%)	209 (99%)	2 (1%)	78	70
1	B	204/221 (92%)	200 (98%)	4 (2%)	55	38
1	C	206/221 (93%)	203 (98%)	3 (2%)	65	51
1	D	203/221 (92%)	199 (98%)	4 (2%)	55	38
All	All	824/884 (93%)	811 (98%)	13 (2%)	62	48

All (13) residues with a non-rotameric sidechain are listed below:

Mol	Chain	Res	Type
1	A	163	VAL
1	A	208	LEU
1	B	77	ARG
1	B	197	LEU
1	B	202	LEU
1	B	218	TYR

Continued on next page...

Continued from previous page...

Mol	Chain	Res	Type
1	C	2	SER
1	C	207	VAL
1	C	265	LEU
1	D	103	GLN
1	D	107	ARG
1	D	139	ASN
1	D	197	LEU

Sometimes sidechains can be flipped to improve hydrogen bonding and reduce clashes. All (5) such sidechains are listed below:

Mol	Chain	Res	Type
1	A	144	HIS
1	B	144	HIS
1	C	116	GLN
1	C	144	HIS
1	D	144	HIS

5.3.3 RNA [i](#)

There are no RNA molecules in this entry.

5.4 Non-standard residues in protein, DNA, RNA chains [i](#)

There are no non-standard protein/DNA/RNA residues in this entry.

5.5 Carbohydrates [i](#)

There are no monosaccharides in this entry.

5.6 Ligand geometry [i](#)

Of 5 ligands modelled in this entry, 4 are monoatomic - leaving 1 for Mogul analysis.

In the following table, the Counts columns list the number of bonds (or angles) for which Mogul statistics could be retrieved, the number of bonds (or angles) that are observed in the model and the number of bonds (or angles) that are defined in the Chemical Component Dictionary. The Link column lists molecule types, if any, to which the group is linked. The Z score for a bond length (or angle) is the number of standard deviations the observed value is removed from the expected value. A bond length (or angle) with $|Z| > 2$ is considered an outlier worth inspection. RMSZ is the root-mean-square of all Z scores of the bond lengths (or angles).

Mol	Type	Chain	Res	Link	Bond lengths			Bond angles		
					Counts	RMSZ	# Z > 2	Counts	RMSZ	# Z > 2
3	PE4	A	800	-	23,23,23	0.47	0	22,22,22	0.89	1 (4%)

In the following table, the Chirals column lists the number of chiral outliers, the number of chiral centers analysed, the number of these observed in the model and the number defined in the Chemical Component Dictionary. Similar counts are reported in the Torsion and Rings columns. '-' means no outliers of that kind were identified.

Mol	Type	Chain	Res	Link	Chirals	Torsions	Rings
3	PE4	A	800	-	-	9/21/21/21	-

There are no bond length outliers.

All (1) bond angle outliers are listed below:

Mol	Chain	Res	Type	Atoms	Z	Observed(°)	Ideal(°)
3	A	800	PE4	O6-C11-C12	-2.77	97.91	110.39

There are no chirality outliers.

All (9) torsion outliers are listed below:

Mol	Chain	Res	Type	Atoms
3	A	800	PE4	O6-C11-C12-O7
3	A	800	PE4	O7-C13-C14-O8
3	A	800	PE4	O3-C5-C6-O4
3	A	800	PE4	O6-C10-C9-O5
3	A	800	PE4	C12-C11-O6-C10
3	A	800	PE4	C1-C2-O2-C3
3	A	800	PE4	C8-C7-O4-C6
3	A	800	PE4	C14-C13-O7-C12
3	A	800	PE4	C13-C14-O8-C15

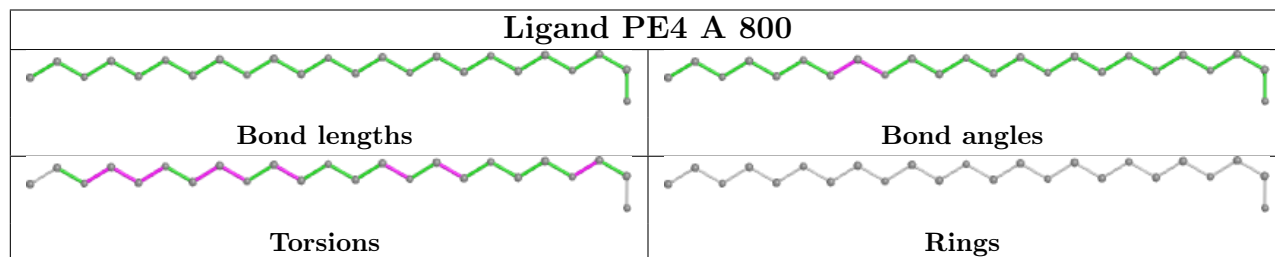
There are no ring outliers.

1 monomer is involved in 1 short contact:

Mol	Chain	Res	Type	Clashes	Symm-Clashes
3	A	800	PE4	1	0

The following is a two-dimensional graphical depiction of Mogul quality analysis of bond lengths, bond angles, torsion angles, and ring geometry for all instances of the Ligand of Interest. In addition, ligands with molecular weight > 250 and outliers as shown on the validation Tables will also be included. For torsion angles, if less than 5% of the Mogul distribution of torsion angles is

within 10 degrees of the torsion angle in question, then that torsion angle is considered an outlier. Any bond that is central to one or more torsion angles identified as an outlier by Mogul will be highlighted in the graph. For rings, the root-mean-square deviation (RMSD) between the ring in question and similar rings identified by Mogul is calculated over all ring torsion angles. If the average RMSD is greater than 60 degrees and the minimal RMSD between the ring in question and any Mogul-identified rings is also greater than 60 degrees, then that ring is considered an outlier. The outliers are highlighted in purple. The color gray indicates Mogul did not find sufficient equivalents in the CSD to analyse the geometry.



5.7 Other polymers [i](#)

There are no such residues in this entry.

5.8 Polymer linkage issues [i](#)

There are no chain breaks in this entry.

6 Fit of model and data

6.1 Protein, DNA and RNA chains

In the following table, the column labelled ‘#RSRZ > 2’ contains the number (and percentage) of RSRZ outliers, followed by percent RSRZ outliers for the chain as percentile scores relative to all X-ray entries and entries of similar resolution. The OWAB column contains the minimum, median, 95th percentile and maximum values of the occupancy-weighted average B-factor per residue. The column labelled ‘Q < 0.9’ lists the number of (and percentage) of residues with an average occupancy less than 0.9.

Mol	Chain	Analysed	<RSRZ>	#RSRZ>2	OWAB(Å ²)	Q<0.9
1	A	287/303 (94%)	0.22	15 (5%) 27 30	11, 17, 34, 44	0
1	B	277/303 (91%)	0.44	20 (7%) 15 17	11, 18, 37, 50	0
1	C	279/303 (92%)	0.22	13 (4%) 31 35	11, 18, 36, 50	0
1	D	278/303 (91%)	0.71	34 (12%) 4 4	14, 26, 46, 60	0
All	All	1121/1212 (92%)	0.40	82 (7%) 15 17	11, 20, 40, 60	0

All (82) RSRZ outliers are listed below:

Mol	Chain	Res	Type	RSRZ
1	B	216	PHE	13.8
1	D	163	VAL	10.9
1	B	2	SER	9.9
1	A	163	VAL	8.9
1	B	168	ALA	8.8
1	B	163	VAL	8.4
1	D	142	TYR	8.4
1	D	168	ALA	8.3
1	D	2	SER	7.6
1	B	142	TYR	6.4
1	A	299	THR	6.3
1	C	2	SER	6.3
1	A	216	PHE	6.2
1	C	168	ALA	6.0
1	D	3	GLU	5.9
1	B	218	TYR	5.8
1	D	195	ARG	5.5
1	A	214	ILE	5.3
1	C	218	TYR	5.2
1	D	297	GLY	5.2
1	D	204	PRO	5.2

Continued on next page...

Continued from previous page...

Mol	Chain	Res	Type	RSRZ
1	C	210	ARG	5.1
1	C	142	TYR	4.5
1	B	204	PRO	4.4
1	D	199	PRO	4.4
1	C	104	ARG	4.3
1	D	261	ASN	4.0
1	D	106	GLN	3.9
1	D	191	ILE	3.8
1	B	263	LEU	3.8
1	D	218	TYR	3.8
1	A	211	ALA	3.7
1	A	98	MET	3.5
1	D	98	MET	3.4
1	D	169	ASP	3.3
1	B	199	PRO	3.3
1	D	103	GLN	3.3
1	D	171	PRO	3.2
1	A	106	GLN	3.1
1	A	171	PRO	3.0
1	D	295	GLY	3.0
1	B	104	ARG	3.0
1	D	200	ASP	2.9
1	D	174	PRO	2.9
1	A	3	GLU	2.8
1	D	173	ASP	2.8
1	B	172	GLY	2.8
1	B	3	GLU	2.7
1	D	263	LEU	2.7
1	A	174	PRO	2.7
1	A	204	PRO	2.7
1	B	169	ASP	2.6
1	D	187	LEU	2.6
1	C	204	PRO	2.6
1	A	134	VAL	2.5
1	D	198	VAL	2.5
1	D	172	GLY	2.5
1	C	106	GLN	2.5
1	B	203	ARG	2.4
1	C	297	GLY	2.4
1	B	205	GLU	2.4
1	D	255	ARG	2.4
1	D	115	ARG	2.4

Continued on next page...

Continued from previous page...

Mol	Chain	Res	Type	RSRZ
1	C	169	ASP	2.3
1	D	262	ASN	2.3
1	D	194	ALA	2.3
1	C	221	ASP	2.2
1	A	142	TYR	2.2
1	B	202	LEU	2.2
1	C	298	PHE	2.2
1	A	210	ARG	2.2
1	C	207	VAL	2.2
1	A	172	GLY	2.2
1	B	206	TRP	2.2
1	D	203	ARG	2.1
1	B	191	ILE	2.1
1	D	139	ASN	2.1
1	D	4	THR	2.1
1	D	221	ASP	2.1
1	B	297	GLY	2.0
1	D	105	SER	2.0
1	B	221	ASP	2.0

6.2 Non-standard residues in protein, DNA, RNA chains [i](#)

There are no non-standard protein/DNA/RNA residues in this entry.

6.3 Carbohydrates [i](#)

There are no monosaccharides in this entry.

6.4 Ligands [i](#)

In the following table, the Atoms column lists the number of modelled atoms in the group and the number defined in the chemical component dictionary. The B-factors column lists the minimum, median, 95th percentile and maximum values of B factors of atoms in the group. The column labelled 'Q< 0.9' lists the number of atoms with occupancy less than 0.9.

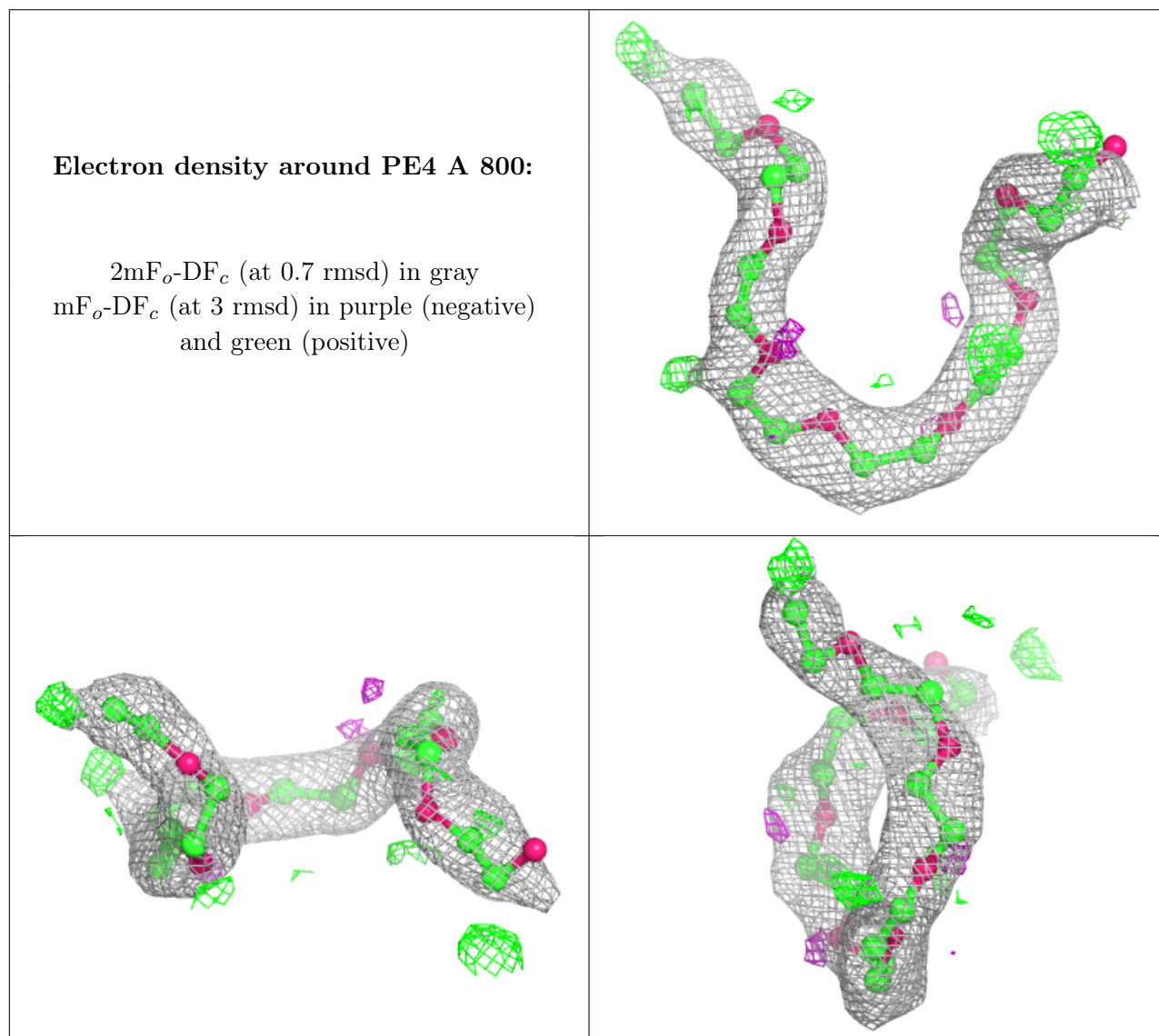
Mol	Type	Chain	Res	Atoms	RSCC	RSR	B-factors(Å ²)	Q<0.9
3	PE4	A	800	24/24	0.75	0.21	23,41,53,58	0
2	ZN	D	304	1/1	0.99	0.02	21,21,21,21	0
2	ZN	C	304	1/1	1.00	0.03	15,15,15,15	0
2	ZN	A	304	1/1	1.00	0.02	15,15,15,15	0

Continued on next page...

Continued from previous page...

Mol	Type	Chain	Res	Atoms	RSCC	RSR	B-factors(\AA^2)	Q<0.9
2	ZN	B	304	1/1	1.00	0.02	13,13,13,13	0

The following is a graphical depiction of the model fit to experimental electron density of all instances of the Ligand of Interest. In addition, ligands with molecular weight > 250 and outliers as shown on the geometry validation Tables will also be included. Each fit is shown from different orientation to approximate a three-dimensional view.



6.5 Other polymers [i](#)

There are no such residues in this entry.