



Full wwPDB X-ray Structure Validation Report ⓘ

Feb 17, 2018 – 05:09 am GMT

PDB ID : 1Q7T
Title : Rv1170 (MshB) from Mycobacterium tuberculosis
Authors : McCarthy, A.A.; Peterson, N.A.; Knijff, R.; Baker, E.N.; TB Structural Genomics Consortium (TBSGC)
Deposited on : 2003-08-20
Resolution : 1.90 Å(reported)

This is a Full wwPDB X-ray Structure Validation Report for a publicly released PDB entry.

We welcome your comments at validation@mail.wwpdb.org

A user guide is available at

<https://www.wwpdb.org/validation/2017/XrayValidationReportHelp>

with specific help available everywhere you see the ⓘ symbol.

The following versions of software and data (see [references ⓘ](#)) were used in the production of this report:

MolProbity : 4.02b-467
Mogul : 1.7.3 (157068), CSD as539be (2018)
Xtrriage (Phenix) : **NOT EXECUTED**
EDS : **NOT EXECUTED**
Percentile statistics : 20171227.v01 (using entries in the PDB archive December 27th 2017)
Ideal geometry (proteins) : Engh & Huber (2001)
Ideal geometry (DNA, RNA) : Parkinson et al. (1996)
Validation Pipeline (wwPDB-VP) : trunk30686

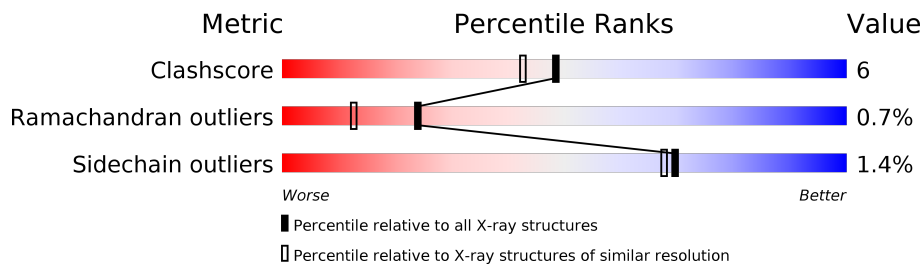
1 Overall quality at a glance

The following experimental techniques were used to determine the structure:

X-RAY DIFFRACTION

The reported resolution of this entry is 1.90 Å.

Percentile scores (ranging between 0-100) for global validation metrics of the entry are shown in the following graphic. The table shows the number of entries on which the scores are based.



Metric	Whole archive (#Entries)	Similar resolution (#Entries, resolution range(Å))
Clashscore	122078	6112 (1.90-1.90)
Ramachandran outliers	120005	6045 (1.90-1.90)
Sidechain outliers	119972	6045 (1.90-1.90)

The table below summarises the geometric issues observed across the polymeric chains and their fit to the electron density. The red, orange, yellow and green segments on the lower bar indicate the fraction of residues that contain outliers for ≥ 3 , 2, 1 and 0 types of geometric quality criteria. A grey segment represents the fraction of residues that are not modelled. The numeric value for each fraction is indicated below the corresponding segment, with a dot representing fractions $\leq 5\%$. The upper red bar (where present) indicates the fraction of residues that have poor fit to the electron density. The numeric value is given above the bar.

Note EDS was not executed.

Mol	Chain	Length	Quality of chain
1	A	328	 81% 13% • 5%
1	B	328	 80% 8% • 11%

2 Entry composition i

There are 4 unique types of molecules in this entry. The entry contains 4866 atoms, of which 0 are hydrogens and 0 are deuteriums.

In the tables below, the ZeroOcc column contains the number of atoms modelled with zero occupancy, the AltConf column contains the number of residues with at least one atom in alternate conformation and the Trace column contains the number of residues modelled with at most 2 atoms.

- Molecule 1 is a protein called hypothetical protein Rv1170.

Mol	Chain	Residues	Atoms					ZeroOcc	AltConf	Trace
			Total	C	N	O	S			
1	A	310	Total	C	N	O	S	0	0	0
			2306	1441	416	446	3			
1	B	291	Total	C	N	O	S	0	2	0
			2178	1361	401	414	2			

There are 50 discrepancies between the modelled and reference sequences:

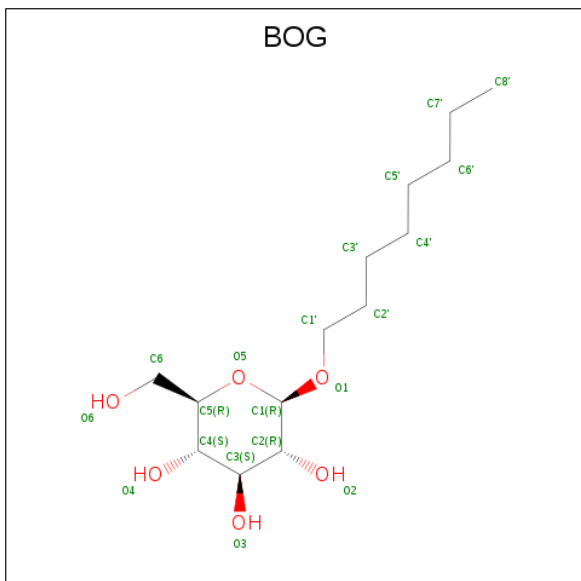
Chain	Residue	Modelled	Actual	Comment	Reference
A	-24	MET	-	EXPRESSION TAG	UNP O50426
A	-23	SER	-	EXPRESSION TAG	UNP O50426
A	-22	TYR	-	EXPRESSION TAG	UNP O50426
A	-21	TYR	-	EXPRESSION TAG	UNP O50426
A	-20	HIS	-	EXPRESSION TAG	UNP O50426
A	-19	HIS	-	EXPRESSION TAG	UNP O50426
A	-18	HIS	-	EXPRESSION TAG	UNP O50426
A	-17	HIS	-	EXPRESSION TAG	UNP O50426
A	-16	HIS	-	EXPRESSION TAG	UNP O50426
A	-15	HIS	-	EXPRESSION TAG	UNP O50426
A	-14	ASP	-	EXPRESSION TAG	UNP O50426
A	-13	TYR	-	EXPRESSION TAG	UNP O50426
A	-12	ASP	-	EXPRESSION TAG	UNP O50426
A	-11	ILE	-	EXPRESSION TAG	UNP O50426
A	-10	PRO	-	EXPRESSION TAG	UNP O50426
A	-9	THR	-	EXPRESSION TAG	UNP O50426
A	-8	THR	-	EXPRESSION TAG	UNP O50426
A	-7	GLU	-	EXPRESSION TAG	UNP O50426
A	-6	ASN	-	EXPRESSION TAG	UNP O50426
A	-5	LEU	-	EXPRESSION TAG	UNP O50426
A	-4	TYR	-	EXPRESSION TAG	UNP O50426
A	-3	PHE	-	EXPRESSION TAG	UNP O50426
A	-2	GLN	-	EXPRESSION TAG	UNP O50426
A	-1	GLY	-	EXPRESSION TAG	UNP O50426
A	0	ALA	-	EXPRESSION TAG	UNP O50426

Continued on next page...

Continued from previous page...

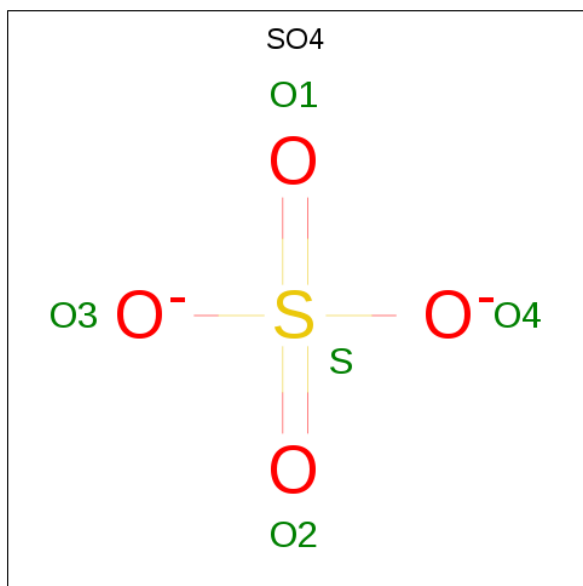
Chain	Residue	Modelled	Actual	Comment	Reference
B	-24	MET	-	EXPRESSION TAG	UNP O50426
B	-23	SER	-	EXPRESSION TAG	UNP O50426
B	-22	TYR	-	EXPRESSION TAG	UNP O50426
B	-21	TYR	-	EXPRESSION TAG	UNP O50426
B	-20	HIS	-	EXPRESSION TAG	UNP O50426
B	-19	HIS	-	EXPRESSION TAG	UNP O50426
B	-18	HIS	-	EXPRESSION TAG	UNP O50426
B	-17	HIS	-	EXPRESSION TAG	UNP O50426
B	-16	HIS	-	EXPRESSION TAG	UNP O50426
B	-15	HIS	-	EXPRESSION TAG	UNP O50426
B	-14	ASP	-	EXPRESSION TAG	UNP O50426
B	-13	TYR	-	EXPRESSION TAG	UNP O50426
B	-12	ASP	-	EXPRESSION TAG	UNP O50426
B	-11	ILE	-	EXPRESSION TAG	UNP O50426
B	-10	PRO	-	EXPRESSION TAG	UNP O50426
B	-9	THR	-	EXPRESSION TAG	UNP O50426
B	-8	THR	-	EXPRESSION TAG	UNP O50426
B	-7	GLU	-	EXPRESSION TAG	UNP O50426
B	-6	ASN	-	EXPRESSION TAG	UNP O50426
B	-5	LEU	-	EXPRESSION TAG	UNP O50426
B	-4	TYR	-	EXPRESSION TAG	UNP O50426
B	-3	PHE	-	EXPRESSION TAG	UNP O50426
B	-2	GLN	-	EXPRESSION TAG	UNP O50426
B	-1	GLY	-	EXPRESSION TAG	UNP O50426
B	0	ALA	-	EXPRESSION TAG	UNP O50426

- Molecule 2 is B-OCTYLGLUCOSIDE (three-letter code: BOG) (formula: C₁₄H₂₈O₆).



Mol	Chain	Residues	Atoms			ZeroOcc	AltConf
2	A	1	Total	C	O	0	0
			20	14	6		
2	A	1	Total	C	O	0	0
			13	7	6		
2	B	1	Total	C	O	0	0
			13	7	6		

- Molecule 3 is SULFATE ION (three-letter code: SO4) (formula: O₄S).



Mol	Chain	Residues	Atoms			ZeroOcc	AltConf
3	A	1	Total	O	S	0	0
			5	4	1		
3	B	1	Total	O	S	0	0
			5	4	1		

- Molecule 4 is water.


Mol	Chain	Residues	Atoms		ZeroOcc	AltConf
4	A	166	Total	O	0	0
			166	166		
4	B	160	Total	O	0	0
			160	160		

3 Residue-property plots [i](#)

These plots are drawn for all protein, RNA and DNA chains in the entry. The first graphic for a chain summarises the proportions of the various outlier classes displayed in the second graphic. The second graphic shows the sequence view annotated by issues in geometry and electron density. Residues are color-coded according to the number of geometric quality criteria for which they contain at least one outlier: green = 0, yellow = 1, orange = 2 and red = 3 or more. A red dot above a residue indicates a poor fit to the electron density ($RSRZ > 2$). Stretches of 2 or more consecutive residues without any outlier are shown as a green connector. Residues present in the sample, but not in the model, are shown in grey.

Note EDS was not executed.

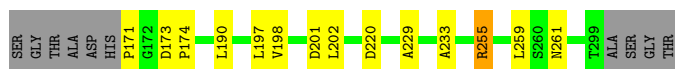
- Molecule 1: hypothetical protein Rv1170

Chain A: 



- Molecule 1: hypothetical protein Rv1170

Chain B: 



4 Data and refinement statistics

Xtrriage (Phenix) and EDS were not executed - this section is therefore incomplete.

Property	Value	Source
Space group	P 21 21 21	Depositor
Cell constants a, b, c, α , β , γ	71.69Å 83.74Å 95.65Å 90.00° 90.00° 90.00°	Depositor
Resolution (Å)	19.35 – 1.90	Depositor
% Data completeness (in resolution range)	99.4 (19.35-1.90)	Depositor
R_{merge}	0.07	Depositor
R_{sym}	(Not available)	Depositor
Refinement program	CNS 1.1	Depositor
R, R_{free}	0.190 , 0.215	Depositor
Estimated twinning fraction	No twinning to report.	Xtrriage
Total number of atoms	4866	wwPDB-VP
Average B, all atoms (Å ²)	26.0	wwPDB-VP

5 Model quality

5.1 Standard geometry

Bond lengths and bond angles in the following residue types are not validated in this section: SO4, BOG

The Z score for a bond length (or angle) is the number of standard deviations the observed value is removed from the expected value. A bond length (or angle) with $|Z| > 5$ is considered an outlier worth inspection. RMSZ is the root-mean-square of all Z scores of the bond lengths (or angles).

Mol	Chain	Bond lengths		Bond angles	
		RMSZ	# Z >5	RMSZ	# Z >5
1	A	0.29	0/2359	0.59	0/3224
1	B	0.29	0/2238	0.59	0/3060
All	All	0.29	0/4597	0.59	0/6284

There are no bond length outliers.

There are no bond angle outliers.

There are no chirality outliers.

There are no planarity outliers.

5.2 Too-close contacts

In the following table, the Non-H and H(model) columns list the number of non-hydrogen atoms and hydrogen atoms in the chain respectively. The H(added) column lists the number of hydrogen atoms added and optimized by MolProbity. The Clashes column lists the number of clashes within the asymmetric unit, whereas Symm-Clashes lists symmetry related clashes.

Mol	Chain	Non-H	H(model)	H(added)	Clashes	Symm-Clashes
1	A	2306	0	2224	35	0
1	B	2178	0	2112	25	0
2	A	33	0	39	0	0
2	B	13	0	11	1	0
3	A	5	0	0	0	0
3	B	5	0	0	0	0
4	A	166	0	0	0	0
4	B	160	0	0	1	0
All	All	4866	0	4386	58	0

The all-atom clashscore is defined as the number of clashes found per 1000 atoms (including hydrogen atoms). The all-atom clashscore for this structure is 6.

All (58) close contacts within the same asymmetric unit are listed below, sorted by their clash magnitude.

Atom-1	Atom-2	Interatomic distance (Å)	Clash overlap (Å)
1:A:-6:ASN:HD22	1:B:115:ARG:HH12	1.16	0.92
1:A:144:HIS:HD2	1:A:146:ASP:H	1.20	0.89
1:A:6:ARG:H	1:A:131:HIS:HD2	1.23	0.86
1:B:255:ARG:HB3	1:B:255:ARG:HH11	1.47	0.79
1:B:144:HIS:HD2	1:B:146:ASP:H	1.32	0.76
1:A:104:ARG:HH22	1:A:106:GLN:HG2	1.54	0.72
1:B:104:ARG:HB3	1:B:104:ARG:NH1	2.06	0.70
1:A:-6:ASN:ND2	1:B:115:ARG:HH12	1.86	0.70
1:B:73:THR:O	1:B:77:ARG:HG2	1.95	0.67
1:B:144:HIS:CD2	1:B:146:ASP:H	2.15	0.61
1:B:27:HIS:O	1:B:31:ARG:HG2	2.00	0.61
1:A:127:GLU:HG3	1:A:171:PRO:HG3	1.81	0.61
1:A:8:LEU:HD11	1:A:38:VAL:HG23	1.84	0.58
1:A:144:HIS:CD2	1:A:146:ASP:H	2.11	0.58
1:B:255:ARG:CB	1:B:255:ARG:HH11	2.15	0.58
1:A:229:ALA:HB1	1:A:233:ALA:HB3	1.86	0.57
1:B:104:ARG:HB3	1:B:104:ARG:HH11	1.71	0.54
1:B:229:ALA:HB1	1:B:233:ALA:HB3	1.89	0.54
1:A:6:ARG:N	1:A:131:HIS:HD2	2.01	0.52
1:A:13:HIS:HE1	1:A:146:ASP:OD2	1.93	0.52
1:A:187:LEU:O	1:A:191:ILE:HG12	2.10	0.52
1:B:259:LEU:HD22	2:B:402:BOG:H62	1.91	0.52
1:B:190:LEU:C	1:B:190:LEU:HD13	2.31	0.51
1:A:144:HIS:HD2	1:A:146:ASP:N	2.00	0.51
1:B:8:LEU:HD11	1:B:38:VAL:HG23	1.94	0.49
1:A:104:ARG:HH22	1:A:106:GLN:CG	2.24	0.49
1:A:76:LEU:HD12	1:A:84:PRO:HG3	1.95	0.48
1:B:198:VAL:HG22	1:B:201:ASP:OD2	2.14	0.48
1:B:127:GLU:HG3	1:B:171:PRO:HG3	1.95	0.48
1:B:144:HIS:HD2	1:B:146:ASP:N	2.09	0.48
1:A:103:GLN:HG3	1:A:108:ARG:HD2	1.96	0.47
1:B:104:ARG:HH11	1:B:104:ARG:CB	2.27	0.47
1:A:113:ASP:OD2	1:A:115:ARG:HB3	2.15	0.47
1:A:6:ARG:H	1:A:131:HIS:CD2	2.15	0.46
1:B:142:TYR:CD1	1:B:142:TYR:C	2.89	0.46
1:B:42:LEU:HD23	1:B:86:TYR:CE2	2.50	0.46
1:A:211:ALA:C	1:A:213:GLU:H	2.19	0.46
1:B:255:ARG:HD3	4:B:659:HOH:O	2.14	0.46
1:A:15:ASP:OD2	1:A:15:ASP:C	2.54	0.45
1:A:206:TRP:HB3	1:A:264:ALA:HB2	1.99	0.45

Continued on next page...

Continued from previous page...

Atom-1	Atom-2	Interatomic distance (Å)	Clash overlap (Å)
1:B:15:ASP:C	1:B:15:ASP:OD2	2.54	0.45
1:A:208:LEU:HD12	1:A:208:LEU:N	2.31	0.45
1:B:142:TYR:CZ	1:B:144:HIS:HB2	2.52	0.44
1:B:197:LEU:HD13	1:B:202:LEU:HD21	1.97	0.44
1:A:14:PRO:O	1:A:15:ASP:CB	2.65	0.44
1:A:137:ASP:HB2	1:A:138:PRO:CD	2.48	0.43
1:A:73:THR:O	1:A:77:ARG:HG3	2.18	0.43
1:A:190:LEU:HD23	1:A:214:ILE:HD13	2.00	0.43
1:A:205:GLU:OE2	1:A:205:GLU:N	2.42	0.42
1:A:190:LEU:CD2	1:A:214:ILE:HD13	2.50	0.41
1:A:187:LEU:C	1:A:187:LEU:HD13	2.41	0.41
1:A:127:GLU:CG	1:A:171:PRO:HG3	2.47	0.41
1:A:200:ASP:O	1:A:252:PRO:HG2	2.20	0.41
1:A:187:LEU:HD13	1:A:191:ILE:HG12	2.03	0.41
1:A:263:LEU:C	1:A:263:LEU:HD23	2.40	0.40
1:A:191:ILE:O	1:A:195:ARG:HG3	2.21	0.40
1:A:14:PRO:O	1:A:15:ASP:CG	2.59	0.40
1:B:173:ASP:HA	1:B:174:PRO:HD3	1.91	0.40

There are no symmetry-related clashes.

5.3 Torsion angles [i](#)

5.3.1 Protein backbone [i](#)

In the following table, the Percentiles column shows the percent Ramachandran outliers of the chain as a percentile score with respect to all X-ray entries followed by that with respect to entries of similar resolution.

The Analysed column shows the number of residues for which the backbone conformation was analysed, and the total number of residues.

Mol	Chain	Analysed	Favoured	Allowed	Outliers	Percentiles	
1	A	306/328 (93%)	293 (96%)	9 (3%)	4 (1%)	13	4
1	B	289/328 (88%)	282 (98%)	7 (2%)	0	100	100
All	All	595/656 (91%)	575 (97%)	16 (3%)	4 (1%)	24	13

All (4) Ramachandran outliers are listed below:

Mol	Chain	Res	Type
1	A	15	ASP
1	A	99	ALA
1	A	212	ASP
1	A	172	GLY

5.3.2 Protein sidechains [i](#)

In the following table, the Percentiles column shows the percent sidechain outliers of the chain as a percentile score with respect to all X-ray entries followed by that with respect to entries of similar resolution.

The Analysed column shows the number of residues for which the sidechain conformation was analysed, and the total number of residues.

Mol	Chain	Analysed	Rotameric	Outliers	Percentiles	
1	A	228/244 (93%)	227 (100%)	1 (0%)	92	92
1	B	215/244 (88%)	210 (98%)	5 (2%)	53	47
All	All	443/488 (91%)	437 (99%)	6 (1%)	69	67

All (6) residues with a non-rotameric sidechain are listed below:

Mol	Chain	Res	Type
1	A	103	GLN
1	B	15	ASP
1	B	142	TYR
1	B	220	ASP
1	B	255	ARG
1	B	261	ASN

Some sidechains can be flipped to improve hydrogen bonding and reduce clashes. All (11) such sidechains are listed below:

Mol	Chain	Res	Type
1	A	-6	ASN
1	A	21	ASN
1	A	60	HIS
1	A	131	HIS
1	A	144	HIS
1	A	147	HIS
1	B	21	ASN
1	B	34	GLN
1	B	144	HIS

Continued on next page...

Continued from previous page...

Mol	Chain	Res	Type
1	B	147	HIS
1	B	232	GLN

5.3.3 RNA [i](#)

There are no RNA molecules in this entry.

5.4 Non-standard residues in protein, DNA, RNA chains [i](#)

There are no non-standard protein/DNA/RNA residues in this entry.

5.5 Carbohydrates [i](#)

There are no carbohydrates in this entry.

5.6 Ligand geometry [i](#)

5 ligands are modelled in this entry.

In the following table, the Counts columns list the number of bonds (or angles) for which Mogul statistics could be retrieved, the number of bonds (or angles) that are observed in the model and the number of bonds (or angles) that are defined in the Chemical Component Dictionary. The Link column lists molecule types, if any, to which the group is linked. The Z score for a bond length (or angle) is the number of standard deviations the observed value is removed from the expected value. A bond length (or angle) with $|Z| > 2$ is considered an outlier worth inspection. RMSZ is the root-mean-square of all Z scores of the bond lengths (or angles).

Mol	Type	Chain	Res	Link	Bond lengths			Bond angles		
					Counts	RMSZ	# Z > 2	Counts	RMSZ	# Z > 2
2	BOG	A	401	-	20,20,20	1.11	2 (10%)	25,25,25	0.63	0
2	BOG	A	403	-	13,13,20	1.45	3 (23%)	18,18,25	0.69	0
3	SO4	A	501	-	4,4,4	1.90	1 (25%)	6,6,6	0.91	0
2	BOG	B	402	-	13,13,20	1.38	2 (15%)	18,18,25	0.80	1 (5%)
3	SO4	B	502	-	4,4,4	1.91	1 (25%)	6,6,6	0.88	0

In the following table, the Chirals column lists the number of chiral outliers, the number of chiral centers analysed, the number of these observed in the model and the number defined in the Chemical Component Dictionary. Similar counts are reported in the Torsion and Rings columns. '-' means no outliers of that kind were identified.

Mol	Type	Chain	Res	Link	Chirals	Torsions	Rings
2	BOG	A	401	-	-	0/11/31/31	0/1/1/1
2	BOG	A	403	-	-	0/4/24/31	0/1/1/1
3	SO4	A	501	-	-	0/0/0/0	0/0/0/0
2	BOG	B	402	-	-	0/4/24/31	0/1/1/1
3	SO4	B	502	-	-	0/0/0/0	0/0/0/0

All (9) bond length outliers are listed below:

Mol	Chain	Res	Type	Atoms	Z	Observed(Å)	Ideal(Å)
2	A	403	BOG	O1-C1	2.00	1.43	1.40
2	B	402	BOG	C4-C5	2.11	1.57	1.53
2	A	401	BOG	C4-C5	2.19	1.57	1.53
2	A	403	BOG	C4-C5	2.40	1.58	1.53
2	B	402	BOG	O5-C1	2.90	1.49	1.41
2	A	401	BOG	O5-C1	2.94	1.49	1.41
2	A	403	BOG	O5-C1	3.01	1.49	1.41
3	A	501	SO4	O1-S	3.23	1.62	1.45
3	B	502	SO4	O1-S	3.26	1.62	1.45

All (1) bond angle outliers are listed below:

Mol	Chain	Res	Type	Atoms	Z	Observed(°)	Ideal(°)
2	B	402	BOG	O1-C1-C2	2.03	110.53	108.14

There are no chirality outliers.

There are no torsion outliers.

There are no ring outliers.

1 monomer is involved in 1 short contact:

Mol	Chain	Res	Type	Clashes	Symm-Clashes
2	B	402	BOG	1	0

5.7 Other polymers [i](#)

There are no such residues in this entry.

5.8 Polymer linkage issues [i](#)

There are no chain breaks in this entry.

6 Fit of model and data

6.1 Protein, DNA and RNA chains

EDS was not executed - this section is therefore empty.

6.2 Non-standard residues in protein, DNA, RNA chains

EDS was not executed - this section is therefore empty.

6.3 Carbohydrates

EDS was not executed - this section is therefore empty.

6.4 Ligands

EDS was not executed - this section is therefore empty.

6.5 Other polymers

EDS was not executed - this section is therefore empty.