



## Full wwPDB X-ray Structure Validation Report ⓘ

Nov 9, 2022 – 03:42 pm GMT

PDB ID : 7Q7G  
Title : Room temperature structure of the Rhodobacter Sphaeroides Photosynthetic Reaction Center F(M197)H mutant at 30 MPa helium gas pressure in a sapphire capillary  
Authors : Lieske, J.; Guenther, S.; Saouane, S.; Selikhanov, G.K.; Gabdulkhakov, A.G.; Meents, A.  
Deposited on : 2021-11-09  
Resolution : 2.69 Å(reported)

This is a Full wwPDB X-ray Structure Validation Report for a publicly released PDB entry.

We welcome your comments at [validation@mail.wwpdb.org](mailto:validation@mail.wwpdb.org)

A user guide is available at

<https://www.wwpdb.org/validation/2017/XrayValidationReportHelp>

with specific help available everywhere you see the ⓘ symbol.

The types of validation reports are described at

<http://www.wwpdb.org/validation/2017/FAQs#types>.

---

The following versions of software and data (see [references](#) ①) were used in the production of this report:

MolProbity : 4.02b-467  
Mogul : 1.8.4, CSD as541be (2020)  
Xtrriage (Phenix) : 1.13  
EDS : 2.31.2  
buster-report : 1.1.7 (2018)  
Percentile statistics : 20191225.v01 (using entries in the PDB archive December 25th 2019)  
Refmac : 5.8.0267  
CCP4 : 7.1.010 (Gargrove)  
Ideal geometry (proteins) : Engh & Huber (2001)  
Ideal geometry (DNA, RNA) : Parkinson et al. (1996)  
Validation Pipeline (wwPDB-VP) : 2.31.2

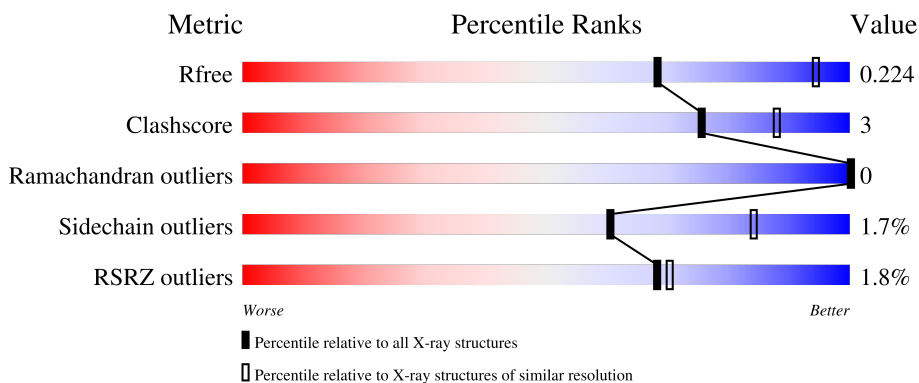
# 1 Overall quality at a glance i

The following experimental techniques were used to determine the structure:

*X-RAY DIFFRACTION*

The reported resolution of this entry is 2.69 Å.

Percentile scores (ranging between 0-100) for global validation metrics of the entry are shown in the following graphic. The table shows the number of entries on which the scores are based.



Metric	Whole archive (#Entries)	Similar resolution (#Entries, resolution range(Å))
$R_{free}$	130704	2808 (2.70-2.70)
Clashscore	141614	3122 (2.70-2.70)
Ramachandran outliers	138981	3069 (2.70-2.70)
Sidechain outliers	138945	3069 (2.70-2.70)
RSRZ outliers	127900	2737 (2.70-2.70)

The table below summarises the geometric issues observed across the polymeric chains and their fit to the electron density. The red, orange, yellow and green segments of the lower bar indicate the fraction of residues that contain outliers for  $\geq 3$ , 2, 1 and 0 types of geometric quality criteria respectively. A grey segment represents the fraction of residues that are not modelled. The numeric value for each fraction is indicated below the corresponding segment, with a dot representing fractions  $\leq 5\%$ . The upper red bar (where present) indicates the fraction of residues that have poor fit to the electron density. The numeric value is given above the bar.

Mol	Chain	Length	Quality of chain
1	H	241	<div style="display: flex; align-items: center;"> <div style="width: 100%; height: 15px; background: linear-gradient(to right, red 1%, orange 1%, yellow 1%, green 93%, grey 6%);"></div> <div style="margin-left: 10px;"> <p>93% 6%</p> </div> </div>
2	L	281	<div style="display: flex; align-items: center;"> <div style="width: 100%; height: 15px; background: linear-gradient(to right, red 3%, orange 1%, yellow 1%, green 97%, grey 0%);"></div> <div style="margin-left: 10px;"> <p>97%</p> </div> </div>
3	M	302	<div style="display: flex; align-items: center;"> <div style="width: 100%; height: 15px; background: linear-gradient(to right, red 1%, orange 1%, yellow 1%, green 93%, grey 6%);"></div> <div style="margin-left: 10px;"> <p>93% 6%</p> </div> </div>

The following table lists non-polymeric compounds, carbohydrate monomers and non-standard residues in protein, DNA, RNA chains that are outliers for geometric or electron-density-fit criteria:

Mol	Type	Chain	Res	Chirality	Geometry	Clashes	Electron density
4	LDA	L	306	-	-	-	X
4	LDA	L	308	-	-	-	X

## 2 Entry composition [i](#)

There are 14 unique types of molecules in this entry. The entry contains 14575 atoms, of which 7243 are hydrogens and 0 are deuteriums.

In the tables below, the ZeroOcc column contains the number of atoms modelled with zero occupancy, the AltConf column contains the number of residues with at least one atom in alternate conformation and the Trace column contains the number of residues modelled with at most 2 atoms.

- Molecule 1 is a protein called Reaction center protein H chain.

Mol	Chain	Residues	Atoms						ZeroOcc	AltConf	Trace
			Total	C	H	N	O	S			
1	H	240	3756	1197	1888	320	341	10	0	6	0

- Molecule 2 is a protein called Reaction center protein L chain.

Mol	Chain	Residues	Atoms						ZeroOcc	AltConf	Trace
			Total	C	H	N	O	S			
2	L	281	4447	1519	2200	357	363	8	0	2	0

There is a discrepancy between the modelled and reference sequences:

Chain	Residue	Modelled	Actual	Comment	Reference
L	178	THR	SER	engineered mutation	UNP P0C0Y8

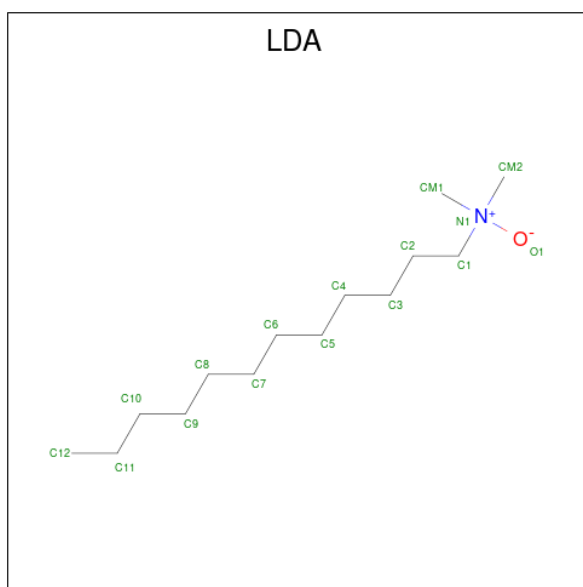
- Molecule 3 is a protein called Reaction center protein M chain.

Mol	Chain	Residues	Atoms						ZeroOcc	AltConf	Trace
			Total	C	H	N	O	S			
3	M	300	4775	1629	2340	398	398	10	0	5	0

There are 2 discrepancies between the modelled and reference sequences:

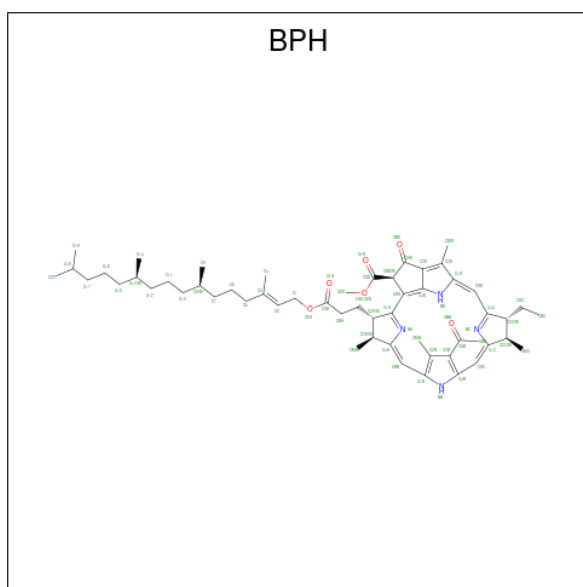
Chain	Residue	Modelled	Actual	Comment	Reference
M	8	THR	SER	engineered mutation	UNP P0C0Y9
M	197	HIS	PHE	engineered mutation	UNP P0C0Y9

- Molecule 4 is LAURYL DIMETHYLAMINE-N-OXIDE (three-letter code: LDA) (formula: C<sub>14</sub>H<sub>31</sub>NO) (labeled as "Ligand of Interest" by depositor).



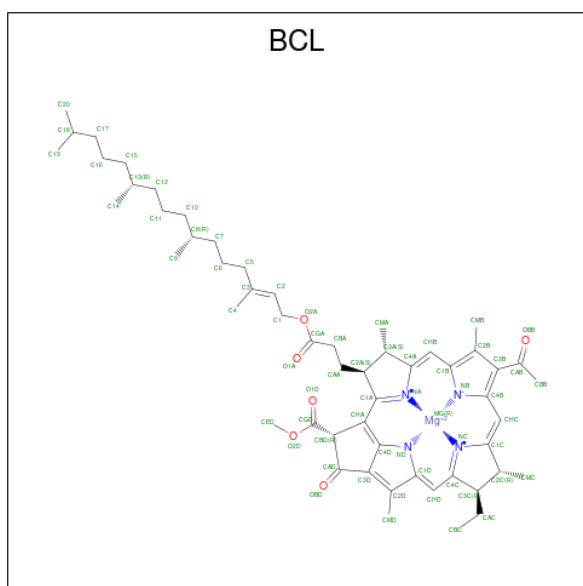
Mol	Chain	Residues	Atoms				ZeroOcc	AltConf	
			Total	C	H	N			O
4	H	1	Total 47	C 14	H 31	N 1	O 1	0	0
4	L	1	Total 47	C 14	H 31	N 1	O 1	0	0
4	L	1	Total 47	C 14	H 31	N 1	O 1	0	0
4	L	1	Total 47	C 14	H 31	N 1	O 1	0	0
4	M	1	Total 47	C 14	H 31	N 1	O 1	0	0
4	M	1	Total 47	C 14	H 31	N 1	O 1	0	0
4	M	1	Total 47	C 14	H 31	N 1	O 1	0	0

- Molecule 5 is BACTERIOPHEOPHYTIN A (three-letter code: BPH) (formula: C<sub>55</sub>H<sub>76</sub>N<sub>4</sub>O<sub>6</sub>) (labeled as "Ligand of Interest" by depositor).



Mol	Chain	Residues	Atoms					ZeroOcc	AltConf
			Total	C	H	N	O		
5	L	1	141	55	76	4	6	0	0
5	M	1	95	40	45	4	6	0	0

- Molecule 6 is BACTERIOCHLOROPHYLL A (three-letter code: BCL) (formula:  $C_{55}H_{74}MgN_4O_6$ ) (labeled as "Ligand of Interest" by depositor).



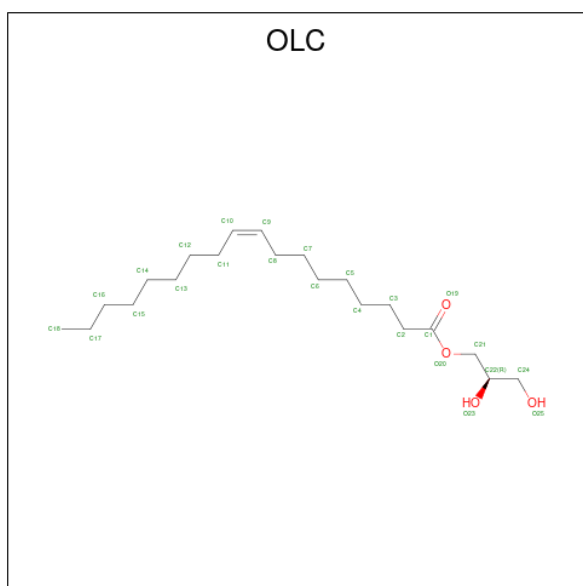
Mol	Chain	Residues	Atoms					ZeroOcc	AltConf	
			Total	C	H	Mg	N			O
6	L	1	140	55	74	1	4	6	0	0

*Continued on next page...*

Continued from previous page...

Mol	Chain	Residues	Atoms					ZeroOcc	AltConf	
			Total	C	H	Mg	N			O
6	L	1	Total	C	H	Mg	N	O	0	0
			140	55	74	1	4	6		
6	M	1	Total	C	H	Mg	N	O	0	0
			124	50	63	1	4	6		
6	M	1	Total	C	H	Mg	N	O	0	0
			94	40	43	1	4	6		

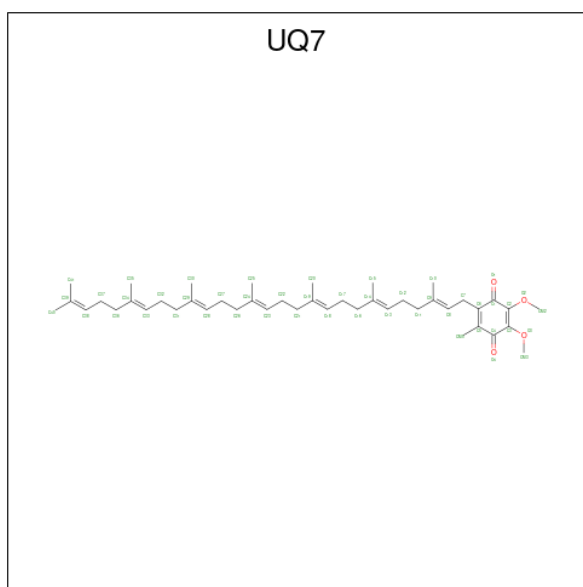
- Molecule 7 is (2R)-2,3-dihydroxypropyl (9Z)-octadec-9-enoate (three-letter code: OLC) (formula: C<sub>21</sub>H<sub>40</sub>O<sub>4</sub>) (labeled as "Ligand of Interest" by depositor).



Mol	Chain	Residues	Atoms			ZeroOcc	AltConf	
			Total	C	H			O
7	L	1	Total	C	H	O	0	0
			65	21	40	4		
7	M	1	Total	C	H	O	0	1
			65	21	40	4		

- Molecule 8 is UBIQUINONE-7 (three-letter code: UQ7) (formula: C<sub>44</sub>H<sub>66</sub>O<sub>4</sub>) (labeled as "Ligand of Interest" by depositor).



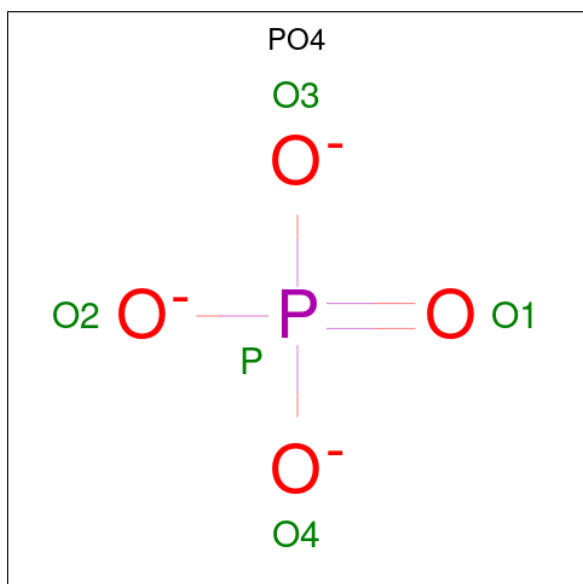


Mol	Chain	Residues	Atoms				ZeroOcc	AltConf
			Total	C	H	O		
8	M	1	113	44	65	4	0	0

- Molecule 9 is FE (III) ION (three-letter code: FE) (formula: Fe) (labeled as "Ligand of Interest" by depositor).

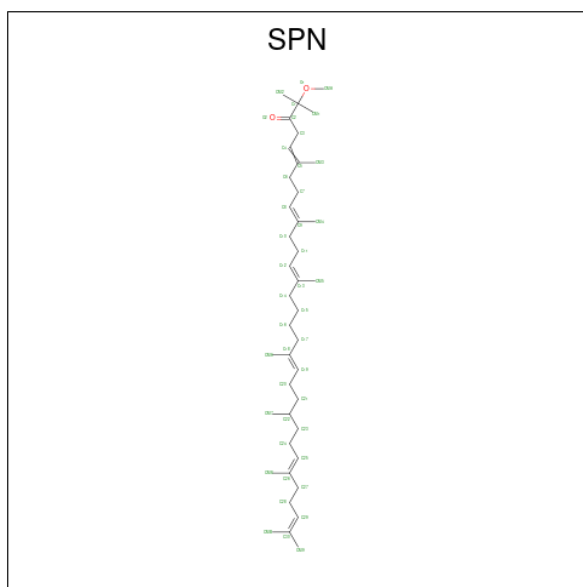
Mol	Chain	Residues	Atoms		ZeroOcc	AltConf
			Total	Fe		
9	M	1	1	1	0	0

- Molecule 10 is PHOSPHATE ION (three-letter code: PO4) (formula: O<sub>4</sub>P) (labeled as "Ligand of Interest" by depositor).



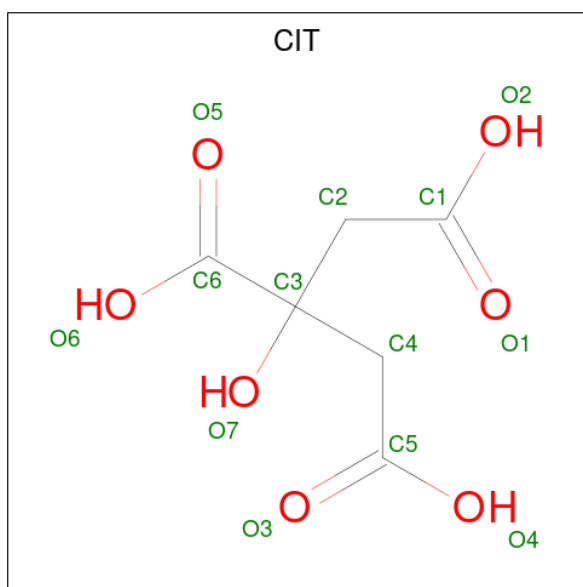
Mol	Chain	Residues	Atoms			ZeroOcc	AltConf
10	M	1	Total	O	P	0	0
			5	4	1		
10	M	1	Total	O	P	0	0
			5	4	1		

- Molecule 11 is SPEROIDENONE (three-letter code: SPN) (formula: C<sub>41</sub>H<sub>70</sub>O<sub>2</sub>) (labeled as "Ligand of Interest" by depositor).



Mol	Chain	Residues	Atoms				ZeroOcc	AltConf
11	M	1	Total	C	H	O	0	1
			113	41	70	2		

- Molecule 12 is CITRIC ACID (three-letter code: CIT) (formula: C<sub>6</sub>H<sub>8</sub>O<sub>7</sub>).



Mol	Chain	Residues	Atoms				ZeroOcc	AltConf
12	M	1	Total	C	H	O	0	0
			21	6	8	7		

- Molecule 13 is CHLORIDE ION (three-letter code: CL) (formula: Cl).

Mol	Chain	Residues	Atoms		ZeroOcc	AltConf
13	M	1	Total	Cl	0	0
			1	1		

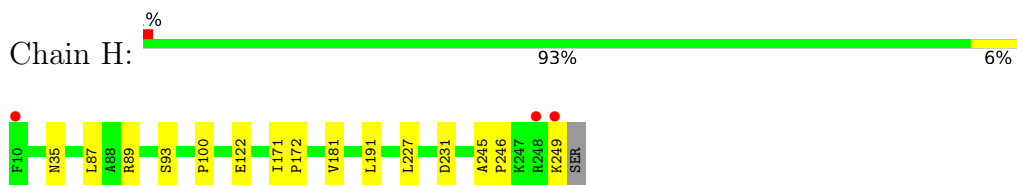
- Molecule 14 is water.

Mol	Chain	Residues	Atoms		ZeroOcc	AltConf
14	H	57	Total	O	0	1
			58	58		
14	L	43	Total	O	0	0
			43	43		
14	M	44	Total	O	0	0
			44	44		

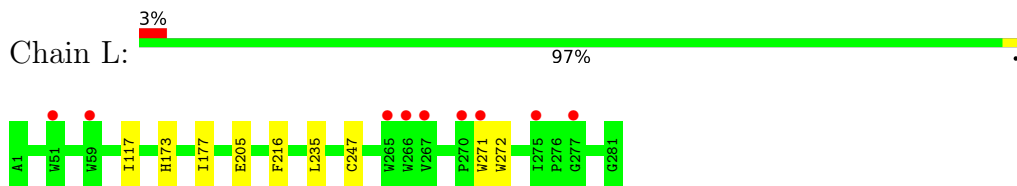
### 3 Residue-property plots [i](#)

These plots are drawn for all protein, RNA, DNA and oligosaccharide chains in the entry. The first graphic for a chain summarises the proportions of the various outlier classes displayed in the second graphic. The second graphic shows the sequence view annotated by issues in geometry and electron density. Residues are color-coded according to the number of geometric quality criteria for which they contain at least one outlier: green = 0, yellow = 1, orange = 2 and red = 3 or more. A red dot above a residue indicates a poor fit to the electron density ( $RSRZ > 2$ ). Stretches of 2 or more consecutive residues without any outlier are shown as a green connector. Residues present in the sample, but not in the model, are shown in grey.

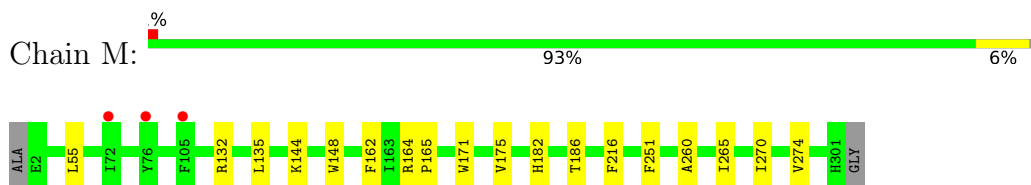
- Molecule 1: Reaction center protein H chain



- Molecule 2: Reaction center protein L chain



- Molecule 3: Reaction center protein M chain



## 4 Data and refinement statistics

Property	Value	Source
Space group	P 42 21 2	Depositor
Cell constants a, b, c, $\alpha$ , $\beta$ , $\gamma$	102.44Å 102.44Å 238.16Å 90.00° 90.00° 90.00°	Depositor
Resolution (Å)	47.05 – 2.69 47.05 – 2.69	Depositor EDS
% Data completeness (in resolution range)	99.2 (47.05-2.69) 88.6 (47.05-2.69)	Depositor EDS
$R_{merge}$	0.37	Depositor
$R_{sym}$	(Not available)	Depositor
$\langle I/\sigma(I) \rangle$ <sup>1</sup>	0.94 (at 2.69Å)	Xtriage
Refinement program	PHENIX 1.13-2998_9999	Depositor
R, $R_{free}$	0.175 , 0.224 0.175 , 0.224	Depositor DCC
$R_{free}$ test set	1440 reflections (4.01%)	wwPDB-VP
Wilson B-factor (Å <sup>2</sup> )	35.0	Xtriage
Anisotropy	0.086	Xtriage
Bulk solvent $k_{sol}$ (e/Å <sup>3</sup> ), $B_{sol}$ (Å <sup>2</sup> )	(Not available) , (Not available)	EDS
L-test for twinning <sup>2</sup>	$\langle  L  \rangle = 0.49$ , $\langle L^2 \rangle = 0.32$	Xtriage
Estimated twinning fraction	No twinning to report.	Xtriage
$F_o, F_c$ correlation	0.94	EDS
Total number of atoms	14575	wwPDB-VP
Average B, all atoms (Å <sup>2</sup> )	51.0	wwPDB-VP

Xtriage's analysis on translational NCS is as follows: *The largest off-origin peak in the Patterson function is 2.94% of the height of the origin peak. No significant pseudotranslation is detected.*

<sup>1</sup>Intensities estimated from amplitudes.

<sup>2</sup>Theoretical values of  $\langle |L| \rangle$ ,  $\langle L^2 \rangle$  for acentric reflections are 0.5, 0.333 respectively for untwinned datasets, and 0.375, 0.2 for perfectly twinned datasets.

## 5 Model quality [i](#)

### 5.1 Standard geometry [i](#)

Bond lengths and bond angles in the following residue types are not validated in this section: PO4, BPH, CIT, FE, SPN, OLC, UQ7, LDA, BCL, CL

The Z score for a bond length (or angle) is the number of standard deviations the observed value is removed from the expected value. A bond length (or angle) with  $|Z| > 5$  is considered an outlier worth inspection. RMSZ is the root-mean-square of all Z scores of the bond lengths (or angles).

Mol	Chain	Bond lengths		Bond angles	
		RMSZ	# Z  >5	RMSZ	# Z  >5
1	H	0.29	0/1934	0.48	0/2628
2	L	0.28	0/2343	0.42	0/3208
3	M	0.28	0/2542	0.42	0/3472
All	All	0.28	0/6819	0.44	0/9308

There are no bond length outliers.

There are no bond angle outliers.

There are no chirality outliers.

There are no planarity outliers.

### 5.2 Too-close contacts [i](#)

In the following table, the Non-H and H(model) columns list the number of non-hydrogen atoms and hydrogen atoms in the chain respectively. The H(added) column lists the number of hydrogen atoms added and optimized by MolProbity. The Clashes column lists the number of clashes within the asymmetric unit, whereas Symm-Clashes lists symmetry-related clashes.

Mol	Chain	Non-H	H(model)	H(added)	Clashes	Symm-Clashes
1	H	1868	1888	1881	7	0
2	L	2247	2200	2194	4	0
3	M	2435	2340	2326	14	0
4	H	16	31	31	3	0
4	L	48	93	93	0	0
4	M	48	93	93	5	0
5	L	65	76	76	0	0
5	M	50	45	43	3	0
6	L	132	148	148	7	0
6	M	112	106	102	5	0

*Continued on next page...*

Continued from previous page...

Mol	Chain	Non-H	H(model)	H(added)	Clashes	Symm-Clashes
7	L	25	40	40	0	0
7	M	25	40	40	1	0
8	M	48	65	66	5	0
9	M	1	0	0	0	0
10	M	10	0	0	0	0
11	M	43	70	70	5	0
12	M	13	8	5	0	0
13	M	1	0	0	1	0
14	H	58	0	0	0	0
14	L	43	0	0	1	0
14	M	44	0	0	0	0
All	All	7332	7243	7208	44	0

The all-atom clashscore is defined as the number of clashes found per 1000 atoms (including hydrogen atoms). The all-atom clashscore for this structure is 3.

All (44) close contacts within the same asymmetric unit are listed below, sorted by their clash magnitude.

Atom-1	Atom-2	Interatomic distance (Å)	Clash overlap (Å)
1:H:181:VAL:HG21	1:H:191:LEU:HD12	1.74	0.70
6:L:302:BCL:HMB1	6:L:302:BCL:HBB2	1.76	0.66
3:M:162[A]:PHE:HB2	11:M:408[A]:SPN:HM71	1.78	0.64
1:H:122:GLU:HB2	1:H:227:LEU:HD21	1.81	0.62
6:M:402:BCL:HBB3	6:M:402:BCL:HMB1	1.83	0.60
3:M:148[A]:TRP:HE1	4:M:410:LDA:HM11	1.65	0.60
4:H:301:LDA:H121	4:M:405:LDA:H91	1.89	0.54
8:M:401:UQ7:HM32	8:M:401:UQ7:O4	2.06	0.54
4:H:301:LDA:H123	8:M:401:UQ7:H202	1.90	0.53
6:L:303:BCL:CBB	6:L:303:BCL:HMB1	2.38	0.53
11:M:408[A]:SPN:H25	11:M:408[A]:SPN:HM93	1.93	0.51
3:M:132:ARG:NH1	13:M:413:CL:CL	2.82	0.50
6:M:403:BCL:HBB3	6:M:403:BCL:HMB1	1.92	0.50
6:M:403:BCL:HHC	6:M:403:BCL:OBB	2.12	0.50
6:L:303:BCL:H193	8:M:401:UQ7:H252	1.94	0.49
4:M:409:LDA:HM21	4:M:409:LDA:C3	2.43	0.49
1:H:87:LEU:HD23	1:H:100:PRO:HA	1.95	0.49
1:H:245:ALA:N	1:H:246:PRO:CD	2.76	0.48
6:L:303:BCL:HMB1	6:L:303:BCL:HBB3	1.96	0.48
5:M:304:BPH:HBC2	5:M:304:BPH:HHD	1.95	0.47
3:M:175:VAL:HB	11:M:408[A]:SPN:H171	1.96	0.47
2:L:173:HIS:CE1	2:L:177:ILE:HD11	2.50	0.47

Continued on next page...

Continued from previous page...

Atom-1	Atom-2	Interatomic distance (Å)	Clash overlap (Å)
8:M:401:UQ7:HM22	8:M:401:UQ7:O3	2.15	0.47
3:M:171:TRP:CZ3	11:M:408[A]:SPN:HM83	2.50	0.46
6:M:402:BCL:HAA2	6:M:403:BCL:HBC1	1.97	0.45
3:M:186:THR:HG23	6:M:402:BCL:HMD2	1.99	0.45
4:H:301:LDA:HM12	4:M:409:LDA:CM1	2.47	0.45
3:M:55:LEU:HD12	3:M:135:LEU:HD12	1.99	0.44
1:H:181:VAL:HG21	1:H:191:LEU:CD1	2.47	0.43
6:L:302:BCL:HMB1	6:L:302:BCL:CBB	2.44	0.43
2:L:177:ILE:HG12	6:L:303:BCL:HMB3	2.01	0.43
3:M:270:ILE:O	3:M:274:VAL:HG13	2.18	0.43
3:M:164:ARG:HB3	3:M:165:PRO:HD3	2.00	0.43
5:M:304:BPH:HHD	5:M:304:BPH:CBC	2.49	0.43
1:H:35:ASN:OD1	3:M:260:ALA:HB1	2.19	0.43
2:L:117:ILE:HD13	3:M:251:PHE:CE1	2.54	0.42
5:M:304:BPH:CBC	5:M:304:BPH:CHD	2.97	0.42
6:L:303:BCL:HHC	6:L:303:BCL:OBB	2.19	0.42
3:M:144:LYS:HB2	4:M:410:LDA:HM13	2.01	0.42
2:L:205:GLU:HG3	14:L:418:HOH:O	2.19	0.42
11:M:408[A]:SPN:HM93	11:M:408[A]:SPN:C25	2.49	0.42
1:H:171:ILE:HB	1:H:172:PRO:HD3	2.02	0.42
3:M:265:ILE:HG21	8:M:401:UQ7:HM33	2.03	0.40
3:M:175:VAL:HB	7:M:407[B]:OLC:H22	2.02	0.40

There are no symmetry-related clashes.

## 5.3 Torsion angles [i](#)

### 5.3.1 Protein backbone [i](#)

In the following table, the Percentiles column shows the percent Ramachandran outliers of the chain as a percentile score with respect to all X-ray entries followed by that with respect to entries of similar resolution.

The Analysed column shows the number of residues for which the backbone conformation was analysed, and the total number of residues.

Mol	Chain	Analysed	Favoured	Allowed	Outliers	Percentiles	
1	H	244/241 (101%)	241 (99%)	3 (1%)	0	100	100
2	L	281/281 (100%)	275 (98%)	6 (2%)	0	100	100
3	M	303/302 (100%)	296 (98%)	7 (2%)	0	100	100

Continued on next page...



Continued from previous page...

Mol	Chain	Analysed	Favoured	Allowed	Outliers	Percentiles	
All	All	828/824 (100%)	812 (98%)	16 (2%)	0	100	100

There are no Ramachandran outliers to report.

### 5.3.2 Protein sidechains [i](#)

In the following table, the Percentiles column shows the percent sidechain outliers of the chain as a percentile score with respect to all X-ray entries followed by that with respect to entries of similar resolution.

The Analysed column shows the number of residues for which the sidechain conformation was analysed, and the total number of residues.

Mol	Chain	Analysed	Rotameric	Outliers	Percentiles	
1	H	201/196 (103%)	197 (98%)	4 (2%)	55	81
2	L	222/220 (101%)	217 (98%)	5 (2%)	50	78
3	M	240/236 (102%)	238 (99%)	2 (1%)	81	93
All	All	663/652 (102%)	652 (98%)	11 (2%)	60	84

All (11) residues with a non-rotameric sidechain are listed below:

Mol	Chain	Res	Type
1	H	89	ARG
1	H	93	SER
1	H	231	ASP
1	H	249	LYS
2	L	216	PHE
2	L	235	LEU
2	L	247	CYS
2	L	271	TRP
2	L	272	TRP
3	M	182	HIS
3	M	216	PHE

Sometimes sidechains can be flipped to improve hydrogen bonding and reduce clashes. There are no such sidechains identified.

### 5.3.3 RNA [i](#)

There are no RNA molecules in this entry.

## 5.4 Non-standard residues in protein, DNA, RNA chains [i](#)

There are no non-standard protein/DNA/RNA residues in this entry.

## 5.5 Carbohydrates [i](#)

There are no monosaccharides in this entry.

## 5.6 Ligand geometry [i](#)

Of 22 ligands modelled in this entry, 2 are monoatomic - leaving 20 for Mogul analysis.

In the following table, the Counts columns list the number of bonds (or angles) for which Mogul statistics could be retrieved, the number of bonds (or angles) that are observed in the model and the number of bonds (or angles) that are defined in the Chemical Component Dictionary. The Link column lists molecule types, if any, to which the group is linked. The Z score for a bond length (or angle) is the number of standard deviations the observed value is removed from the expected value. A bond length (or angle) with  $|Z| > 2$  is considered an outlier worth inspection. RMSZ is the root-mean-square of all Z scores of the bond lengths (or angles).

Mol	Type	Chain	Res	Link	Bond lengths			Bond angles		
					Counts	RMSZ	# Z  > 2	Counts	RMSZ	# Z  > 2
4	LDA	L	308	-	12,15,15	0.38	0	14,17,17	0.19	0
11	SPN	M	408[A]	-	40,42,42	0.28	0	50,52,52	0.59	1 (2%)
7	OLC	M	407[B]	-	24,24,24	0.19	0	25,25,25	0.18	0
8	UQ7	M	401	-	48,48,48	0.37	0	58,61,61	0.47	1 (1%)
4	LDA	L	306	-	12,15,15	0.33	0	14,17,17	0.19	0
5	BPH	M	304	-	36,55,70	1.05	1 (2%)	34,83,101	1.25	4 (11%)
4	LDA	M	409	-	12,15,15	0.34	0	14,17,17	0.28	0
4	LDA	H	301	-	12,15,15	0.33	0	14,17,17	0.33	0
4	LDA	M	405	-	12,15,15	0.38	0	14,17,17	0.25	0
6	BCL	L	302	-	58,74,74	1.24	5 (8%)	69,115,115	1.16	7 (10%)
12	CIT	M	412	-	12,12,12	0.17	0	17,17,17	0.24	0
10	PO4	M	411	-	4,4,4	0.90	0	6,6,6	0.39	0
10	PO4	M	406	-	4,4,4	0.90	0	6,6,6	0.52	0
5	BPH	L	301	-	51,70,70	0.61	2 (3%)	52,101,101	1.02	4 (7%)
7	OLC	L	305	-	24,24,24	0.22	0	25,25,25	0.17	0
6	BCL	L	303	-	58,74,74	1.27	5 (8%)	69,115,115	1.20	8 (11%)
4	LDA	M	410	-	12,15,15	0.39	0	14,17,17	0.82	2 (14%)
6	BCL	M	402	-	53,69,74	1.29	6 (11%)	63,109,115	1.34	8 (12%)
4	LDA	L	307	-	12,15,15	0.36	0	14,17,17	0.72	0
6	BCL	M	403	-	43,59,74	1.42	3 (6%)	51,97,115	1.40	10 (19%)

In the following table, the Chirals column lists the number of chiral outliers, the number of chiral centers analysed, the number of these observed in the model and the number defined in the Chemical Component Dictionary. Similar counts are reported in the Torsion and Rings columns. '-' means no outliers of that kind were identified.

Mol	Type	Chain	Res	Link	Chirals	Torsions	Rings
4	LDA	L	308	-	-	7/13/13/13	-
12	CIT	M	412	-	-	7/16/16/16	-
4	LDA	M	409	-	-	9/13/13/13	-
5	BPH	L	301	-	-	6/37/105/105	0/5/6/6
7	OLC	M	407[B]	-	-	11/24/24/24	-
4	LDA	H	301	-	-	2/13/13/13	-
7	OLC	L	305	-	-	12/24/24/24	-
11	SPN	M	408[A]	-	-	20/50/51/51	-
4	LDA	M	410	-	-	9/13/13/13	-
4	LDA	M	405	-	-	4/13/13/13	-
8	UQ7	M	401	-	-	7/45/69/69	0/1/1/1
4	LDA	L	306	-	-	10/13/13/13	-
6	BCL	L	302	-	-	0/37/137/137	-
5	BPH	M	304	-	-	5/19/87/105	0/5/6/6
6	BCL	M	402	-	-	9/31/131/137	-
4	LDA	L	307	-	-	6/13/13/13	-
6	BCL	L	303	-	-	2/37/137/137	-
6	BCL	M	403	-	-	1/19/119/137	-

All (22) bond length outliers are listed below:

Mol	Chain	Res	Type	Atoms	Z	Observed(Å)	Ideal(Å)
5	M	304	BPH	C2C-C3C	5.49	1.59	1.54
6	L	302	BCL	C1B-NB	5.30	1.39	1.35
6	M	403	BCL	C1B-NB	5.24	1.39	1.35
6	L	303	BCL	C1B-NB	5.22	1.39	1.35
6	M	402	BCL	C1B-NB	4.98	1.39	1.35
6	L	303	BCL	MG-NA	4.67	2.17	2.06
6	L	302	BCL	MG-NA	4.54	2.17	2.06
6	M	403	BCL	MG-NA	4.50	2.17	2.06
6	M	402	BCL	MG-NA	4.50	2.17	2.06
6	L	303	BCL	MG-NC	3.12	2.13	2.06
6	M	403	BCL	MG-NC	3.08	2.13	2.06
6	L	302	BCL	MG-NC	3.03	2.13	2.06
6	M	402	BCL	OBD-CAD	2.55	1.25	1.22

*Continued on next page...*

*Continued from previous page...*

Mol	Chain	Res	Type	Atoms	Z	Observed(Å)	Ideal(Å)
6	M	402	BCL	MG-NC	2.53	2.12	2.06
6	L	302	BCL	OBD-CAD	2.52	1.25	1.22
5	L	301	BPH	C2C-C3C	2.45	1.56	1.54
6	L	303	BCL	OBD-CAD	2.30	1.25	1.22
6	M	402	BCL	C4B-NB	2.30	1.37	1.35
6	L	303	BCL	C4B-NB	2.28	1.37	1.35
6	L	302	BCL	C4B-NB	2.21	1.37	1.35
6	M	402	BCL	O1A-CGA	-2.12	1.16	1.22
5	L	301	BPH	CHA-CBD	2.03	1.54	1.52

All (45) bond angle outliers are listed below:

Mol	Chain	Res	Type	Atoms	Z	Observed(°)	Ideal(°)
6	M	402	BCL	C4A-NA-C1A	4.17	108.58	106.71
6	M	402	BCL	CAD-C3D-C4D	-3.69	106.41	108.47
5	L	301	BPH	CMA-C3A-C4A	-3.57	106.55	114.38
5	M	304	BPH	CAC-C3C-C4C	3.45	121.44	113.73
6	L	302	BCL	OBD-CAD-CBD	-3.42	121.01	125.89
6	M	403	BCL	CAD-C3D-C4D	-3.35	106.60	108.47
6	M	403	BCL	OBD-CAD-CBD	-3.32	121.16	125.89
5	L	301	BPH	C1-C2-C3	-3.31	120.31	126.04
6	M	402	BCL	CMB-C2B-C1B	-3.30	123.39	128.46
6	M	402	BCL	OBD-CAD-CBD	-3.25	121.25	125.89
6	M	402	BCL	CHA-C1A-NA	-3.21	119.04	126.40
6	L	303	BCL	OBD-CAD-CBD	-3.17	121.37	125.89
6	L	303	BCL	CAD-C3D-C4D	-3.05	106.77	108.47
6	M	403	BCL	CHA-C1A-NA	-3.01	119.50	126.40
6	L	302	BCL	CHA-C1A-NA	-2.96	119.61	126.40
6	M	403	BCL	CMB-C2B-C1B	-2.96	123.92	128.46
6	L	303	BCL	CMB-C2B-C1B	-2.94	123.94	128.46
5	M	304	BPH	CMA-C3A-C4A	-2.88	108.07	114.38
6	L	302	BCL	CMB-C2B-C1B	-2.87	124.05	128.46
6	L	303	BCL	C4A-NA-C1A	2.87	108.00	106.71
6	M	402	BCL	C2A-C1A-CHA	2.87	128.87	123.86
5	M	304	BPH	C1-C2-C3	-2.82	122.19	126.75
6	M	403	BCL	C4B-C3B-CAB	-2.81	121.69	127.13
6	M	403	BCL	C2A-C1A-CHA	2.75	128.66	123.86
6	L	303	BCL	CHA-C1A-NA	-2.69	120.25	126.40
6	L	302	BCL	CAD-C3D-C4D	-2.64	107.00	108.47
6	L	303	BCL	C2A-C1A-CHA	2.58	128.36	123.86
6	L	302	BCL	CMD-C2D-C3D	2.48	129.32	124.68
6	L	302	BCL	C2A-C1A-CHA	2.42	128.09	123.86

*Continued on next page...*

Continued from previous page...

Mol	Chain	Res	Type	Atoms	Z	Observed(°)	Ideal(°)
11	M	408[A]	SPN	O1-C1-C2	-2.40	103.86	108.78
6	L	303	BCL	CMD-C2D-C3D	2.30	128.97	124.68
6	M	403	BCL	CMD-C2D-C3D	2.29	128.97	124.68
6	M	402	BCL	CMB-C2B-C3B	2.28	128.95	124.68
6	M	402	BCL	CMD-C2D-C3D	2.28	128.94	124.68
4	M	410	LDA	CM1-N1-C1	2.22	114.89	110.23
6	M	403	BCL	CMB-C2B-C3B	2.18	128.76	124.68
6	M	403	BCL	C1-C2-C3	-2.14	123.29	126.75
5	M	304	BPH	CMB-C2B-C3B	2.13	128.67	124.68
6	M	403	BCL	C4A-NA-C1A	2.11	107.65	106.71
5	L	301	BPH	CMB-C2B-C3B	2.10	128.60	124.68
8	M	401	UQ7	C7-C6-C1	-2.07	115.98	118.48
5	L	301	BPH	C4C-C3C-C2C	-2.07	100.87	102.84
6	L	303	BCL	CMB-C2B-C3B	2.07	128.55	124.68
4	M	410	LDA	CM2-N1-C1	-2.06	105.91	110.23
6	L	302	BCL	C4A-NA-C1A	2.04	107.62	106.71

There are no chirality outliers.

All (127) torsion outliers are listed below:

Mol	Chain	Res	Type	Atoms
4	L	306	LDA	C2-C1-N1-CM1
4	L	306	LDA	C2-C1-N1-CM2
4	L	306	LDA	N1-C1-C2-C3
4	M	405	LDA	C2-C1-N1-O1
4	M	405	LDA	C2-C1-N1-CM1
4	M	409	LDA	N1-C1-C2-C3
4	M	410	LDA	C2-C1-N1-O1
4	M	410	LDA	C2-C1-N1-CM1
4	M	410	LDA	C2-C1-N1-CM2
5	M	304	BPH	C4C-C3C-CAC-CBC
5	M	304	BPH	C2C-C3C-CAC-CBC
7	L	305	OLC	C21-C22-C24-O25
7	L	305	OLC	O20-C21-C22-O23
7	M	407[B]	OLC	O20-C21-C22-C24
7	M	407[B]	OLC	O20-C21-C22-O23
8	M	401	UQ7	C24-C26-C27-C28
11	M	408[A]	SPN	C4-C5-C6-C7
11	M	408[A]	SPN	CM3-C5-C6-C7
11	M	408[A]	SPN	C11-C10-C9-CM4
11	M	408[A]	SPN	C26-C27-C28-C29
11	M	408[A]	SPN	C27-C28-C29-C30

Continued on next page...

*Continued from previous page...*

Mol	Chain	Res	Type	Atoms
12	M	412	CIT	O7-C3-C6-O5
12	M	412	CIT	O7-C3-C6-O6
12	M	412	CIT	C4-C3-C6-O5
12	M	412	CIT	C4-C3-C6-O6
11	M	408[A]	SPN	C11-C10-C9-C8
8	M	401	UQ7	C29-C31-C32-C33
8	M	401	UQ7	C34-C36-C37-C38
11	M	408[A]	SPN	C15-C16-C17-C18
5	L	301	BPH	C8-C10-C11-C12
6	M	402	BCL	C11-C12-C13-C15
7	L	305	OLC	O20-C21-C22-C24
4	M	410	LDA	C4-C5-C6-C7
4	M	410	LDA	C11-C10-C9-C8
11	M	408[A]	SPN	CM1-C1-O1-CMA
4	H	301	LDA	C5-C6-C7-C8
4	L	308	LDA	C7-C8-C9-C10
4	M	405	LDA	C3-C4-C5-C6
4	L	307	LDA	C4-C5-C6-C7
4	M	410	LDA	C3-C4-C5-C6
4	M	410	LDA	C5-C6-C7-C8
6	M	402	BCL	C11-C12-C13-C14
4	M	409	LDA	C3-C4-C5-C6
7	L	305	OLC	C4-C5-C6-C7
7	L	305	OLC	C5-C6-C7-C8
7	L	305	OLC	C3-C4-C5-C6
11	M	408[A]	SPN	C25-C26-C27-C28
7	L	305	OLC	O23-C22-C24-O25
6	M	402	BCL	C6-C7-C8-C10
7	M	407[B]	OLC	C6-C7-C8-C9
4	L	306	LDA	C2-C3-C4-C5
4	L	306	LDA	C4-C5-C6-C7
4	M	409	LDA	C1-C2-C3-C4
7	L	305	OLC	C12-C13-C14-C15
11	M	408[A]	SPN	CM8-C26-C27-C28
6	M	402	BCL	C6-C7-C8-C9
7	M	407[B]	OLC	C4-C5-C6-C7
4	M	410	LDA	C7-C8-C9-C10
7	M	407[B]	OLC	C3-C4-C5-C6
4	L	308	LDA	C1-C2-C3-C4
7	L	305	OLC	C6-C7-C8-C9
5	L	301	BPH	C4-C3-C5-C6
11	M	408[A]	SPN	CM2-C1-O1-CMA

*Continued on next page...*

*Continued from previous page...*

Mol	Chain	Res	Type	Atoms
4	M	409	LDA	C11-C10-C9-C8
6	M	402	BCL	C11-C10-C8-C7
4	L	307	LDA	N1-C1-C2-C3
4	L	308	LDA	C3-C4-C5-C6
11	M	408[A]	SPN	C13-C14-C15-C16
5	L	301	BPH	C2-C3-C5-C6
4	L	307	LDA	C5-C6-C7-C8
4	L	308	LDA	C5-C6-C7-C8
4	M	409	LDA	C7-C8-C9-C10
4	L	307	LDA	C1-C2-C3-C4
4	M	409	LDA	C6-C7-C8-C9
4	M	410	LDA	C2-C3-C4-C5
4	L	308	LDA	C11-C10-C9-C8
5	M	304	BPH	C2-C1-O2A-CGA
5	L	301	BPH	C14-C13-C15-C16
4	L	308	LDA	C9-C10-C11-C12
7	M	407[B]	OLC	C2-C3-C4-C5
11	M	408[A]	SPN	C21-C22-C23-C24
4	M	409	LDA	C4-C5-C6-C7
6	M	402	BCL	CAD-CBD-CGD-O2D
6	M	403	BCL	CAD-CBD-CGD-O2D
4	L	306	LDA	C7-C8-C9-C10
4	H	301	LDA	C1-C2-C3-C4
11	M	408[A]	SPN	C19-C20-C21-C22
4	L	306	LDA	C11-C10-C9-C8
4	M	405	LDA	C2-C1-N1-CM2
11	M	408[A]	SPN	C2-C1-O1-CMA
7	M	407[B]	OLC	C21-C22-C24-O25
4	L	306	LDA	C2-C1-N1-O1
8	M	401	UQ7	C2-C3-O3-CM3
7	L	305	OLC	C14-C15-C16-C17
6	M	402	BCL	C11-C10-C8-C9
11	M	408[A]	SPN	CM7-C22-C23-C24
7	M	407[B]	OLC	C15-C16-C17-C18
4	L	306	LDA	C9-C10-C11-C12
4	L	307	LDA	C6-C7-C8-C9
11	M	408[A]	SPN	C16-C17-C18-CM6
12	M	412	CIT	C1-C2-C3-O7
6	M	402	BCL	C1A-C2A-CAA-CBA
4	M	409	LDA	C9-C10-C11-C12
8	M	401	UQ7	C1-C2-O2-CM2
11	M	408[A]	SPN	C20-C21-C22-CM7

*Continued on next page...*

*Continued from previous page...*

Mol	Chain	Res	Type	Atoms
8	M	401	UQ7	C30-C29-C31-C32
11	M	408[A]	SPN	C16-C17-C18-C19
12	M	412	CIT	C3-C4-C5-O4
7	M	407[B]	OLC	C7-C8-C9-C10
7	L	305	OLC	C9-C10-C11-C12
7	M	407[B]	OLC	C9-C10-C11-C12
5	M	304	BPH	CAD-CBD-CGD-O2D
6	L	303	BCL	CAD-CBD-CGD-O2D
12	M	412	CIT	C3-C4-C5-O3
8	M	401	UQ7	C35-C34-C36-C37
5	L	301	BPH	O2A-C1-C2-C3
5	M	304	BPH	O2A-C1-C2-C3
6	M	402	BCL	CHA-CBD-CGD-O1D
4	M	409	LDA	C5-C6-C7-C8
7	M	407[B]	OLC	O23-C22-C24-O25
4	L	307	LDA	C11-C10-C9-C8
5	L	301	BPH	C13-C15-C16-C17
11	M	408[A]	SPN	C10-C11-C12-C13
6	L	303	BCL	C12-C13-C15-C16
4	L	308	LDA	C2-C3-C4-C5
4	L	306	LDA	C3-C4-C5-C6
7	L	305	OLC	O20-C1-C2-C3

There are no ring outliers.

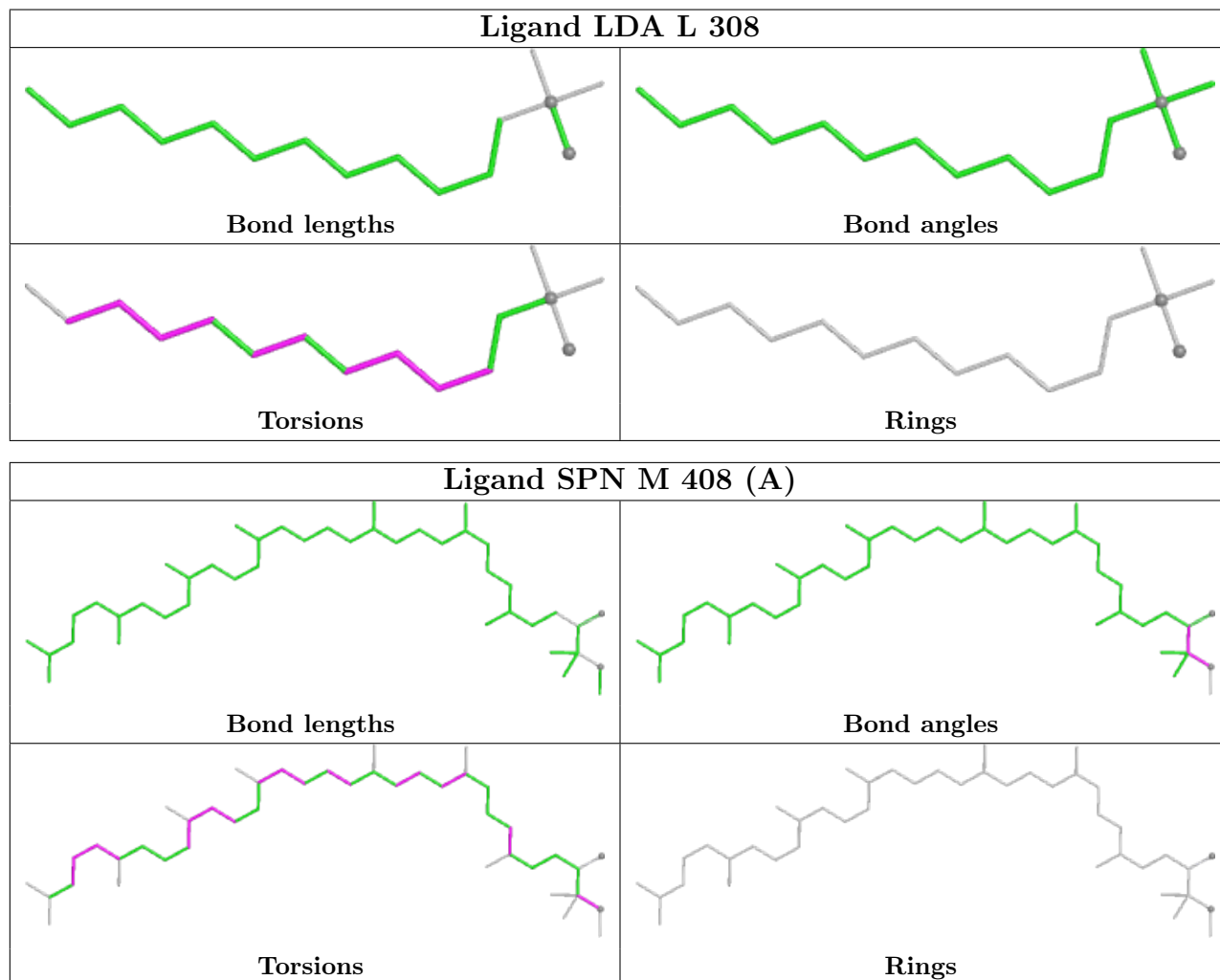
12 monomers are involved in 30 short contacts:

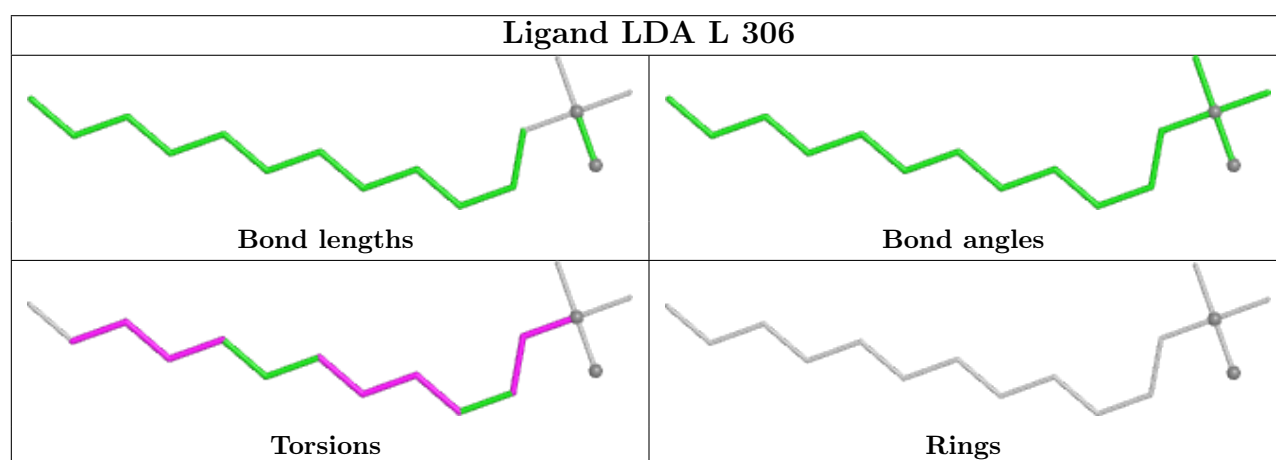
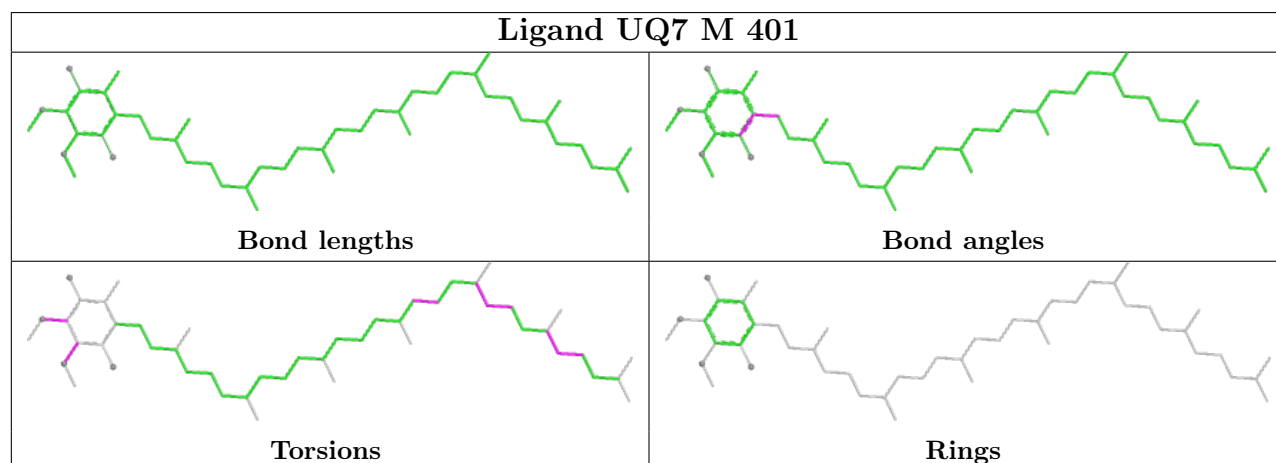
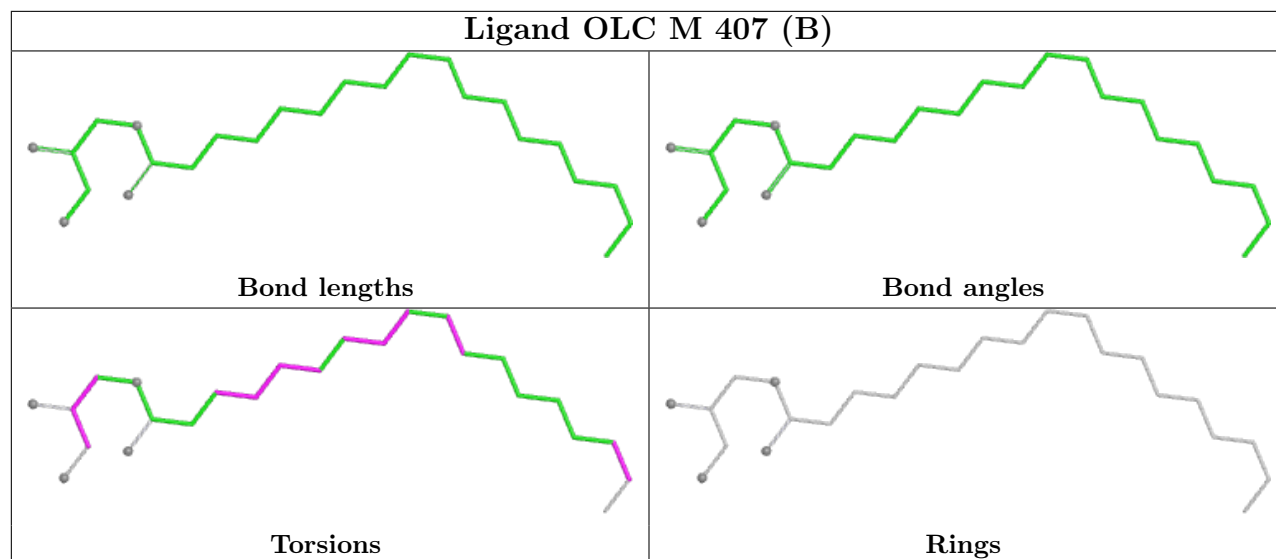
Mol	Chain	Res	Type	Clashes	Symm-Clashes
11	M	408[A]	SPN	5	0
7	M	407[B]	OLC	1	0
8	M	401	UQ7	5	0
5	M	304	BPH	3	0
4	M	409	LDA	2	0
4	H	301	LDA	3	0
4	M	405	LDA	1	0
6	L	302	BCL	2	0
6	L	303	BCL	5	0
4	M	410	LDA	2	0
6	M	402	BCL	3	0
6	M	403	BCL	3	0

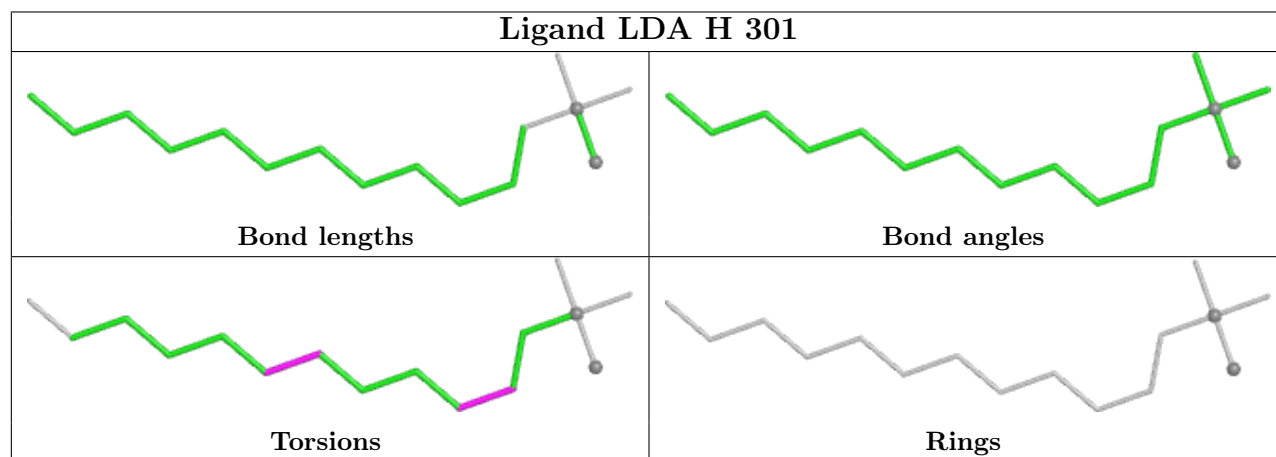
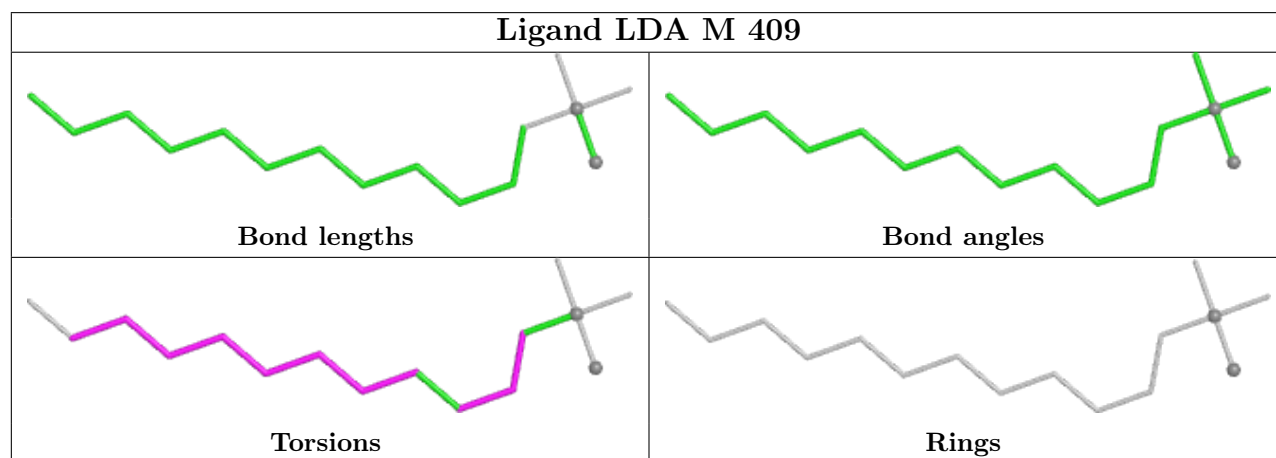
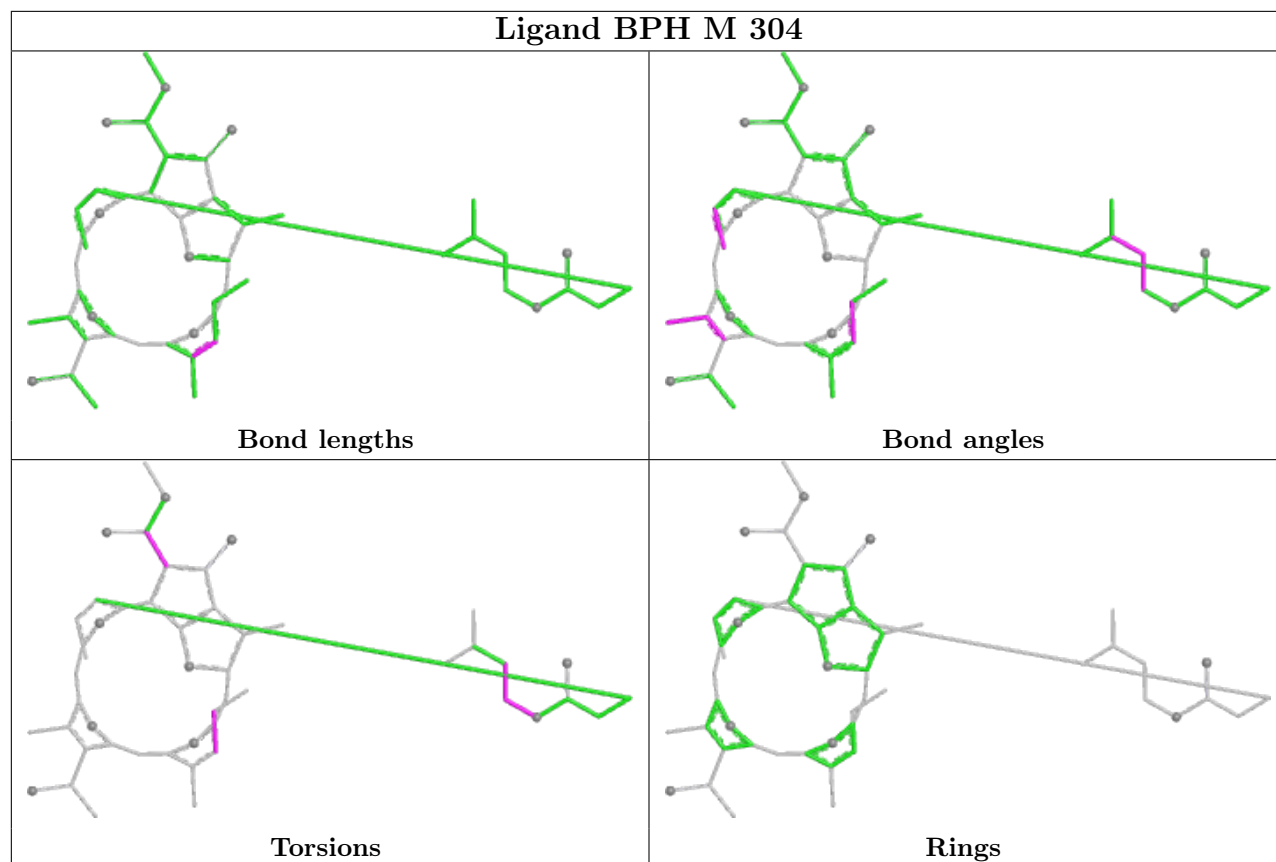
The following is a two-dimensional graphical depiction of Mogul quality analysis of bond lengths, bond angles, torsion angles, and ring geometry for all instances of the Ligand of Interest. In

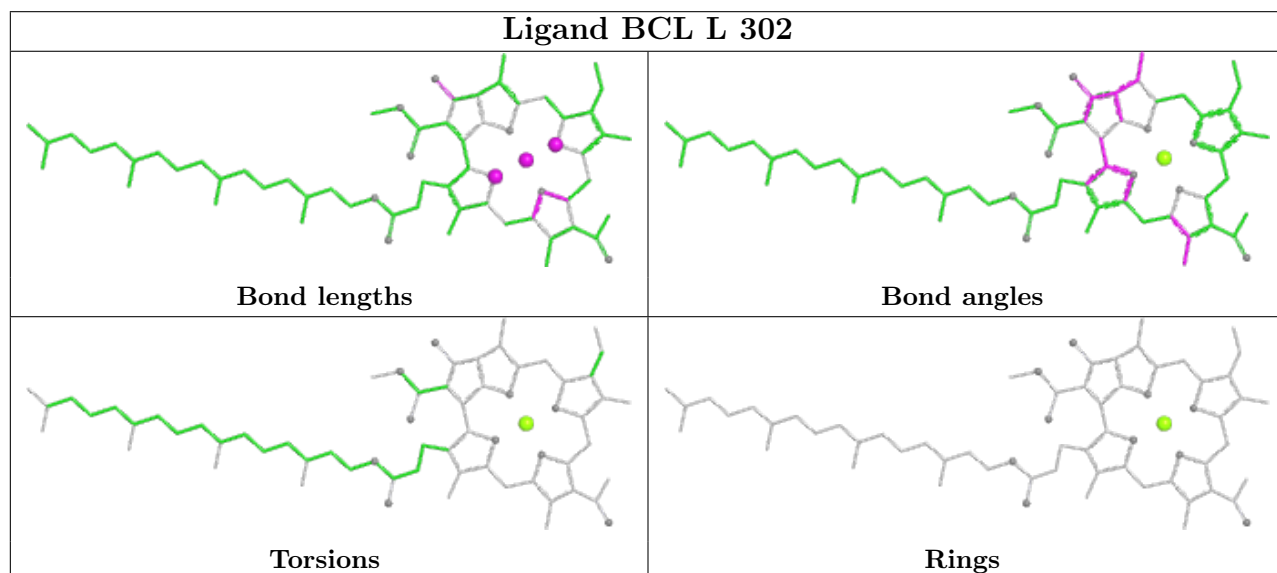
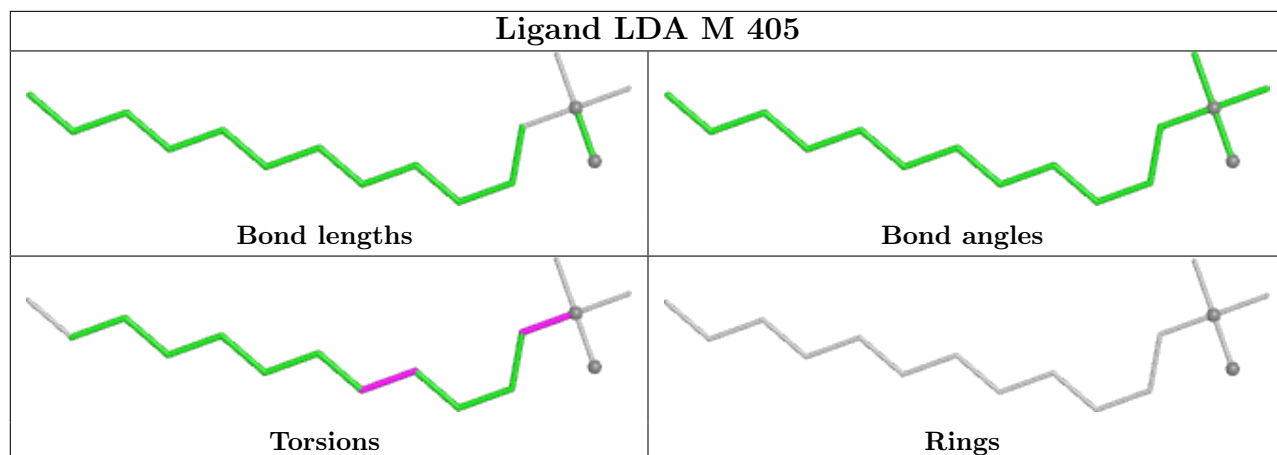


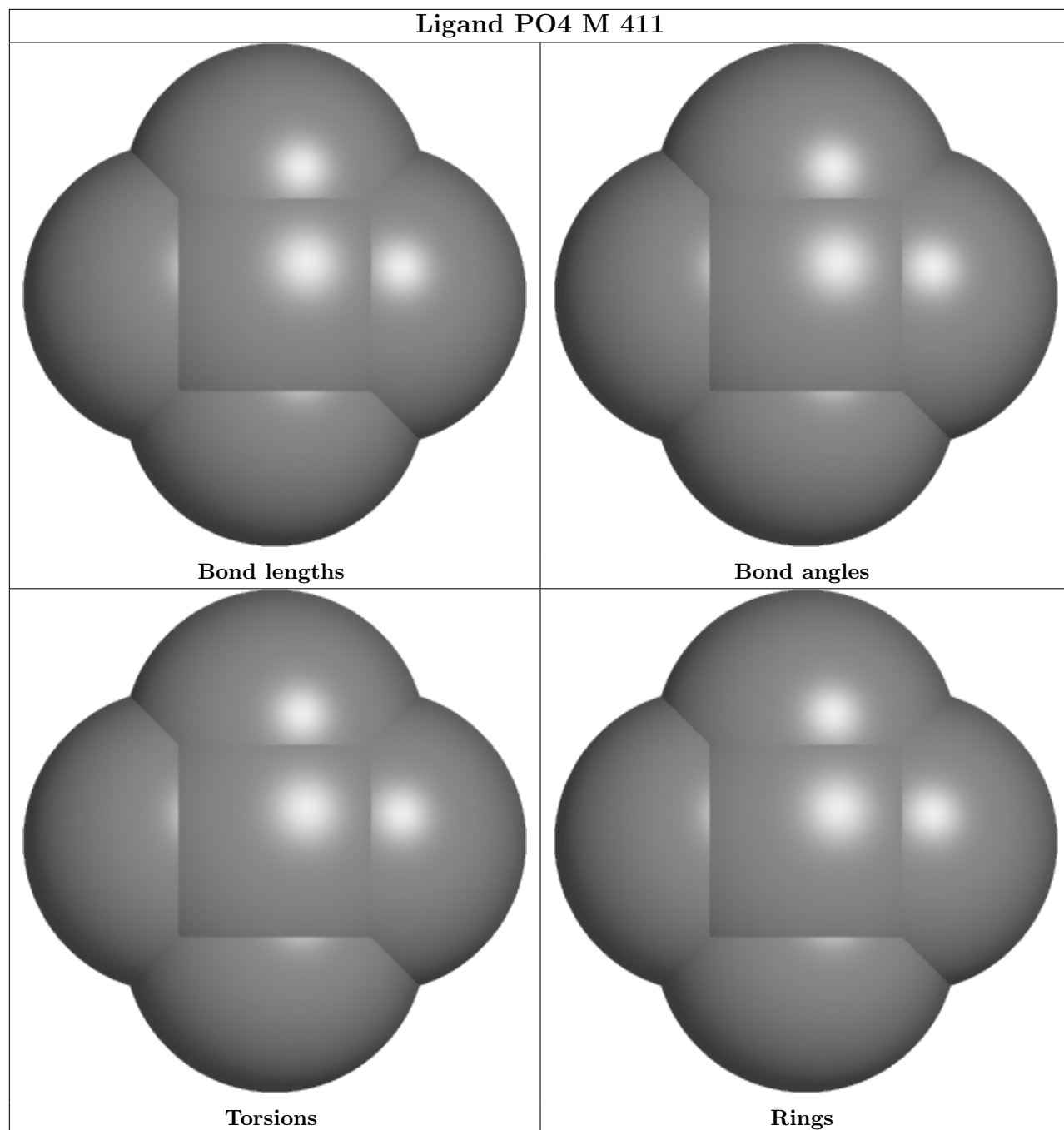
addition, ligands with molecular weight  $> 250$  and outliers as shown on the validation Tables will also be included. For torsion angles, if less than 5% of the Mogul distribution of torsion angles is within 10 degrees of the torsion angle in question, then that torsion angle is considered an outlier. Any bond that is central to one or more torsion angles identified as an outlier by Mogul will be highlighted in the graph. For rings, the root-mean-square deviation (RMSD) between the ring in question and similar rings identified by Mogul is calculated over all ring torsion angles. If the average RMSD is greater than 60 degrees and the minimal RMSD between the ring in question and any Mogul-identified rings is also greater than 60 degrees, then that ring is considered an outlier. The outliers are highlighted in purple. The color gray indicates Mogul did not find sufficient equivalents in the CSD to analyse the geometry.

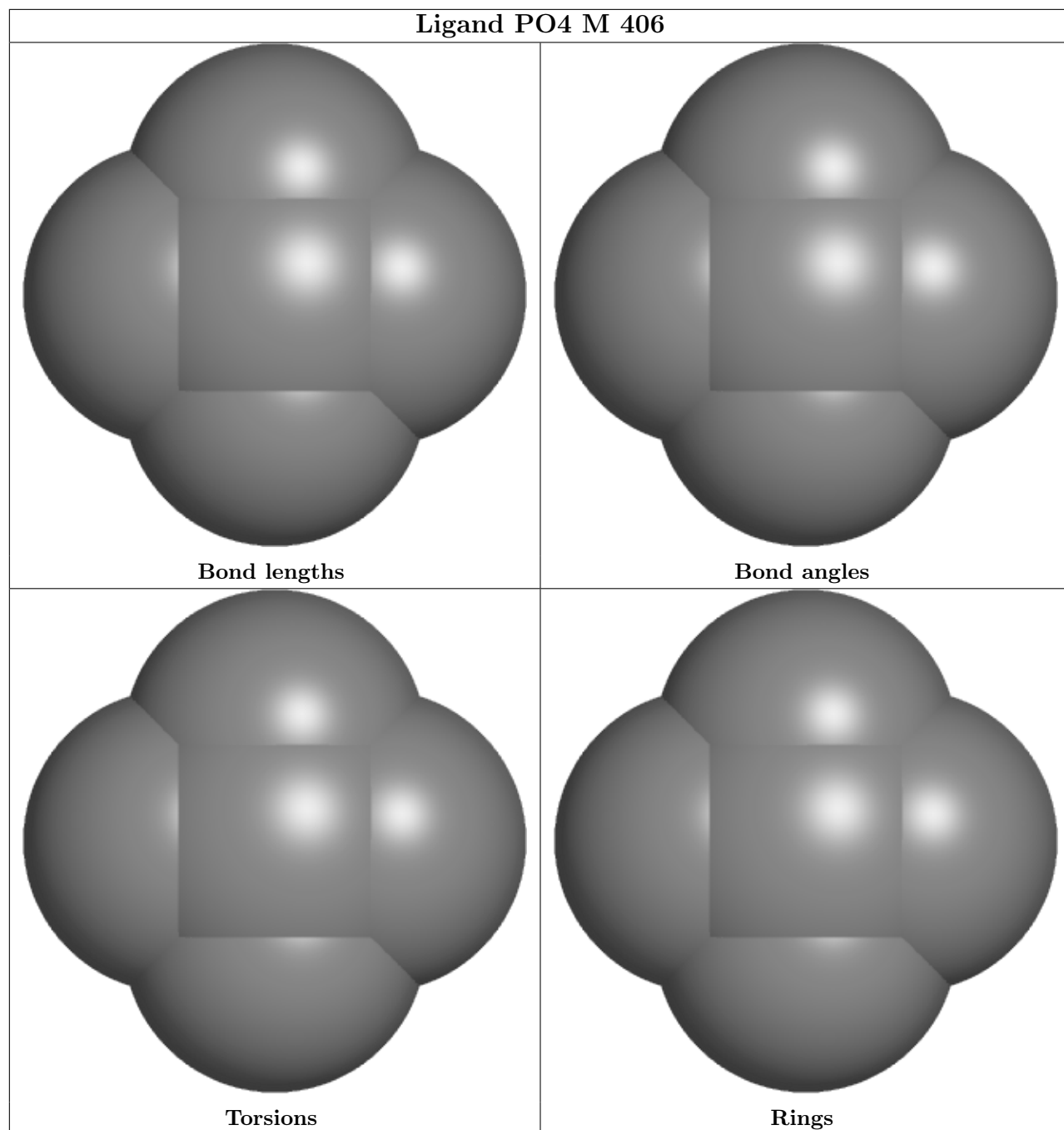


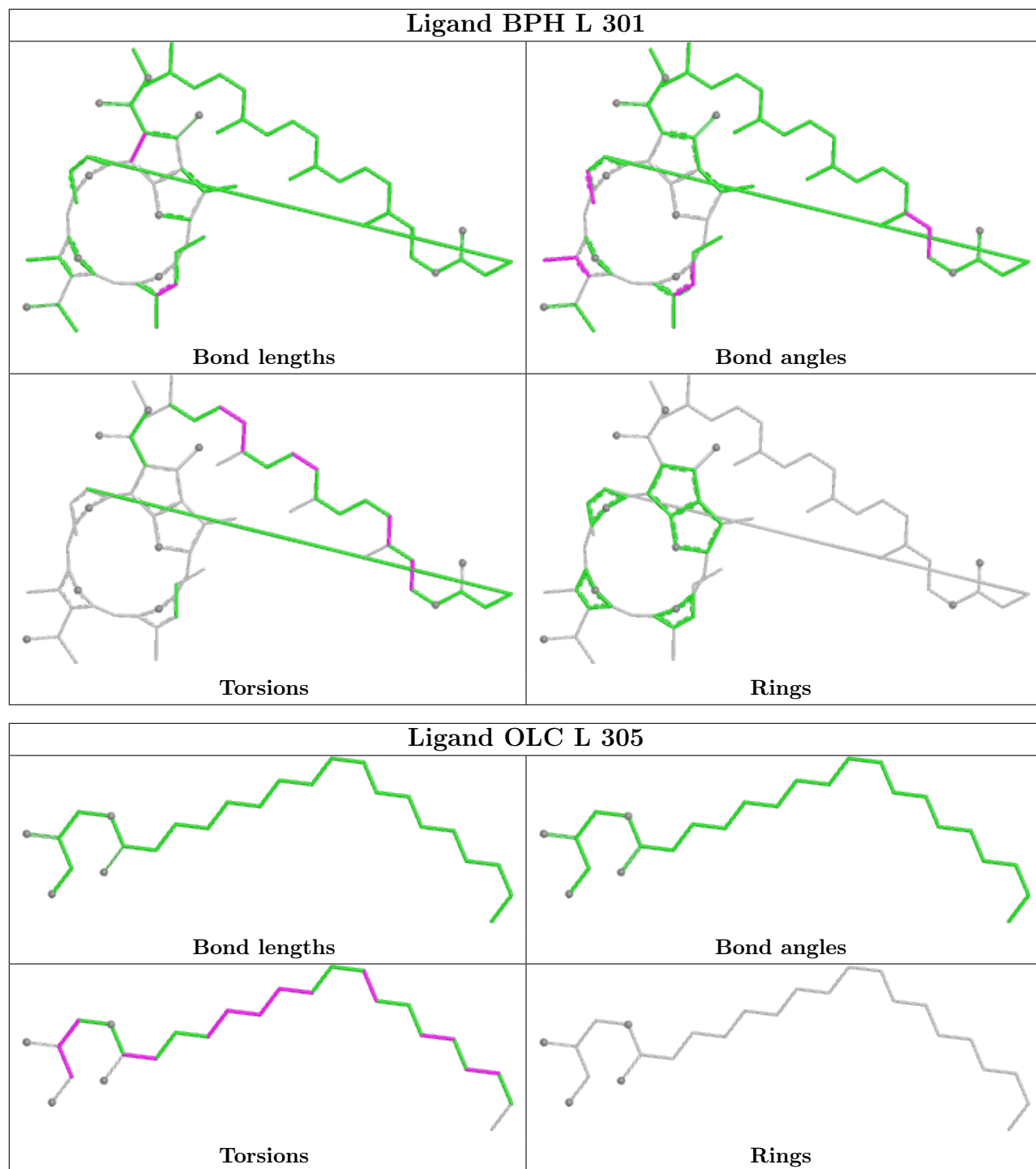


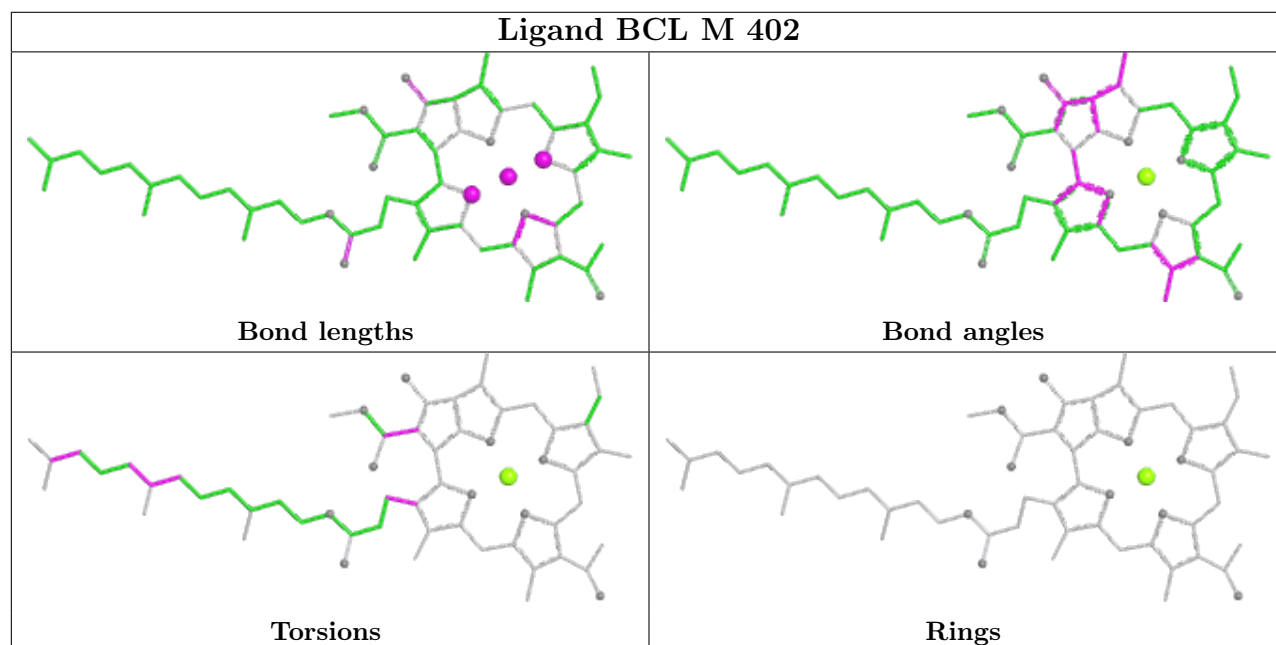
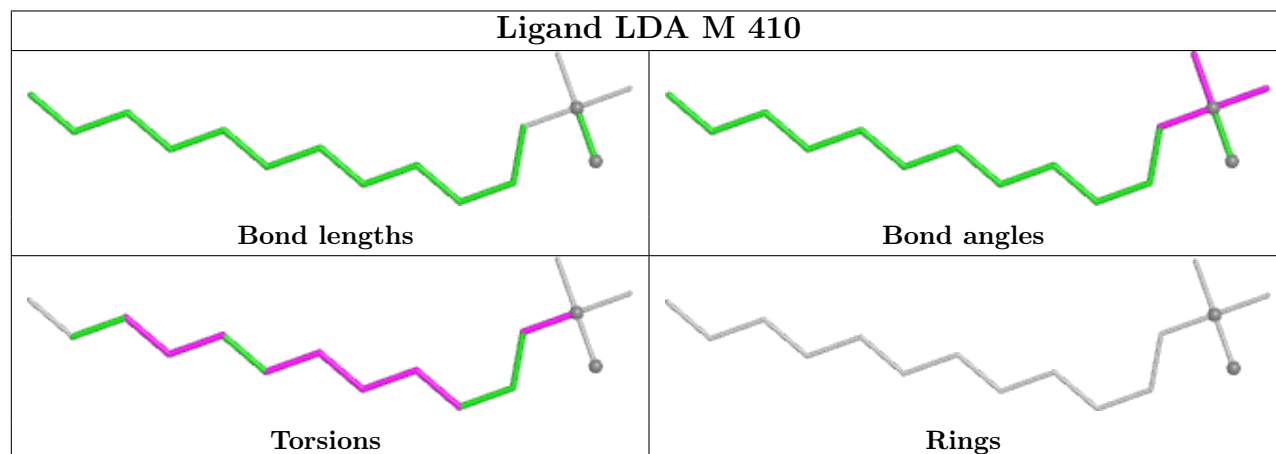
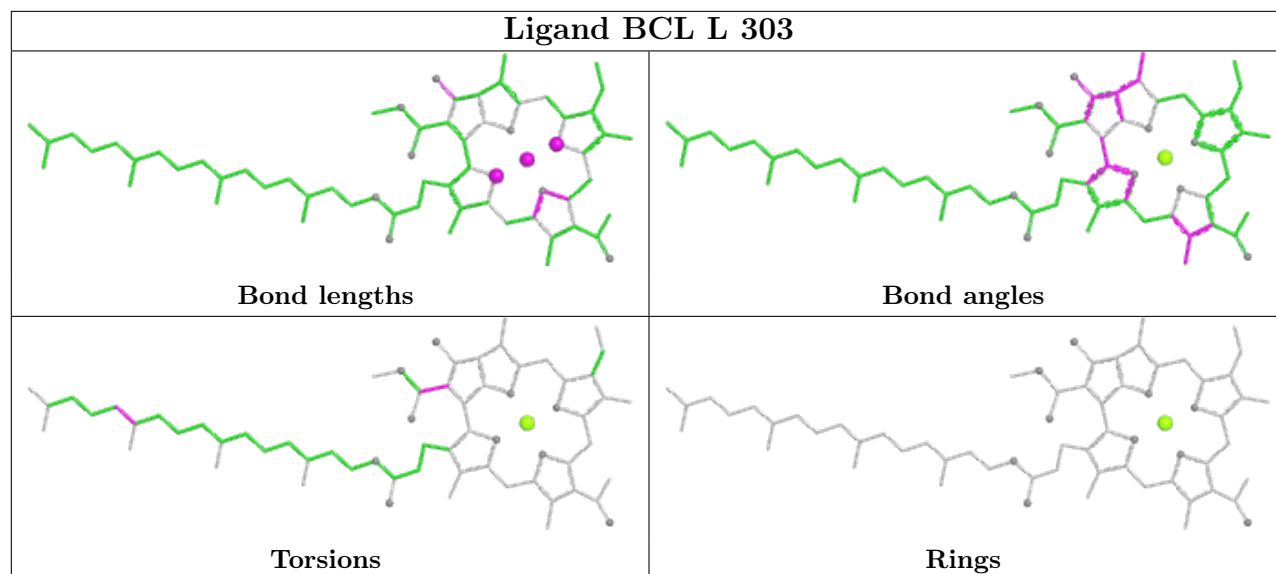




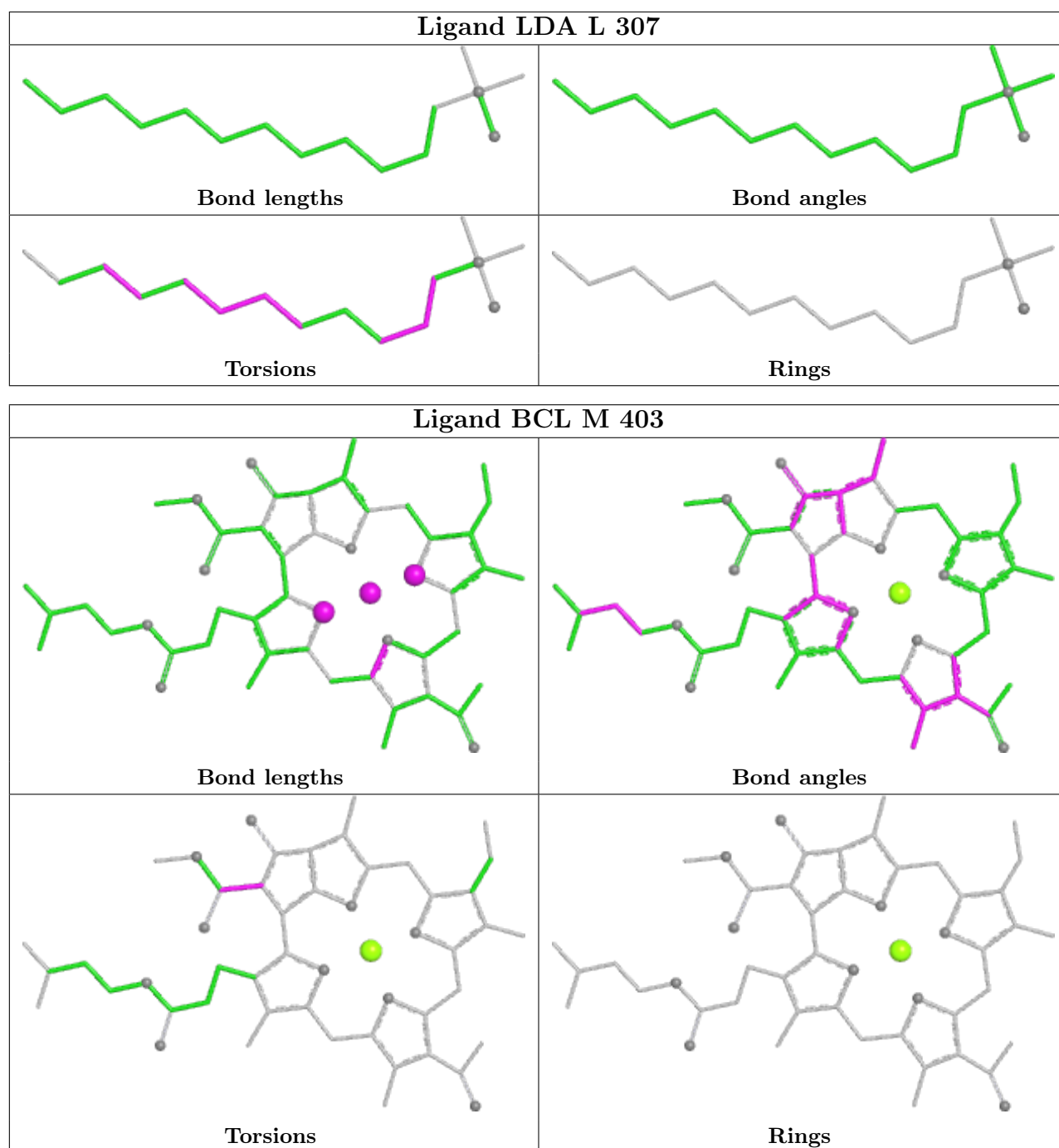












## 5.7 Other polymers [i](#)

There are no such residues in this entry.

## 5.8 Polymer linkage issues [i](#)

There are no chain breaks in this entry.

## 6 Fit of model and data [i](#)

### 6.1 Protein, DNA and RNA chains [i](#)

In the following table, the column labelled ‘#RSRZ > 2’ contains the number (and percentage) of RSRZ outliers, followed by percent RSRZ outliers for the chain as percentile scores relative to all X-ray entries and entries of similar resolution. The OWAB column contains the minimum, median, 95<sup>th</sup> percentile and maximum values of the occupancy-weighted average B-factor per residue. The column labelled ‘Q < 0.9’ lists the number of (and percentage) of residues with an average occupancy less than 0.9.

Mol	Chain	Analysed	<RSRZ>	#RSRZ>2	OWAB(Å <sup>2</sup> )	Q<0.9
1	H	240/241 (99%)	-0.18	3 (1%) 77 78	28, 44, 70, 122	0
2	L	281/281 (100%)	-0.23	9 (3%) 47 48	23, 42, 86, 125	0
3	M	300/302 (99%)	-0.18	3 (1%) 82 83	24, 42, 71, 108	0
All	All	821/824 (99%)	-0.19	15 (1%) 68 70	23, 42, 75, 125	0

All (15) RSRZ outliers are listed below:

Mol	Chain	Res	Type	RSRZ
2	L	270	PRO	4.7
1	H	10	PHE	3.0
2	L	265	TRP	2.9
1	H	249	LYS	2.8
2	L	267	VAL	2.7
2	L	51[A]	TRP	2.7
2	L	277	GLY	2.5
3	M	72	ILE	2.5
2	L	59	TRP	2.5
3	M	105	PHE	2.3
1	H	248	ARG	2.1
2	L	271	TRP	2.1
2	L	266	TRP	2.1
2	L	275	ILE	2.0
3	M	76	TYR	2.0

### 6.2 Non-standard residues in protein, DNA, RNA chains [i](#)

There are no non-standard protein/DNA/RNA residues in this entry.

### 6.3 Carbohydrates [i](#)

There are no monosaccharides in this entry.

### 6.4 Ligands [i](#)

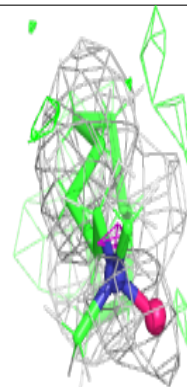
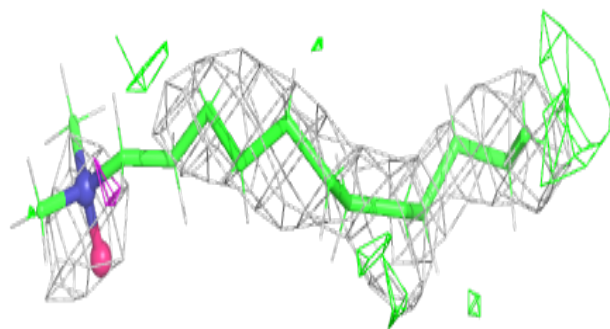
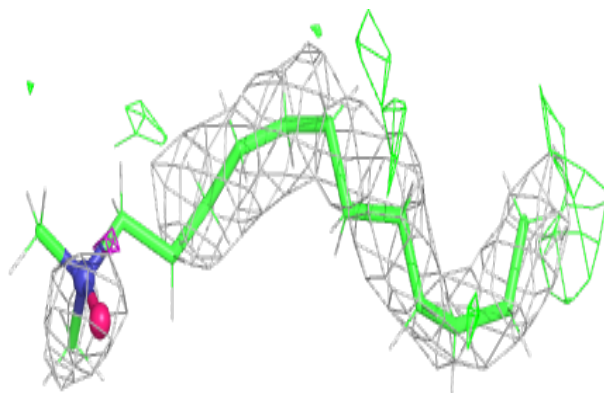
In the following table, the Atoms column lists the number of modelled atoms in the group and the number defined in the chemical component dictionary. The B-factors column lists the minimum, median, 95<sup>th</sup> percentile and maximum values of B factors of atoms in the group. The column labelled 'Q< 0.9' lists the number of atoms with occupancy less than 0.9.

Mol	Type	Chain	Res	Atoms	RSCC	RSR	B-factors(Å <sup>2</sup> )	Q<0.9
4	LDA	L	308	16/16	0.72	0.43	56,75,92,92	47
4	LDA	L	307	16/16	0.74	0.28	78,93,104,104	0
4	LDA	M	409	16/16	0.74	0.33	87,105,108,108	0
4	LDA	L	306	16/16	0.76	0.42	77,94,99,99	0
4	LDA	M	405	16/16	0.77	0.27	57,74,88,88	0
12	CIT	M	412	13/13	0.78	0.23	111,114,136,137	0
7	OLC	L	305	25/25	0.80	0.30	63,85,103,103	0
11	SPN	M	408[A]	43/43	0.83	0.37	25,59,80,80	113
7	OLC	M	407[B]	25/25	0.83	0.30	48,66,80,81	65
4	LDA	M	410	16/16	0.88	0.26	46,58,61,61	0
4	LDA	H	301	16/16	0.89	0.24	51,64,79,80	0
8	UQ7	M	401	48/48	0.90	0.24	33,60,82,84	0
10	PO4	M	411	5/5	0.90	0.27	100,100,101,101	0
6	BCL	L	303	66/66	0.95	0.16	32,43,56,62	0
6	BCL	M	403	51/66	0.95	0.15	33,43,69,73	0
10	PO4	M	406	5/5	0.96	0.17	54,57,58,60	0
5	BPH	L	301	65/65	0.96	0.18	25,37,65,68	0
6	BCL	M	402	61/66	0.96	0.16	41,50,61,65	0
5	BPH	M	304	50/65	0.96	0.15	31,40,64,71	0
13	CL	M	413	1/1	0.96	0.13	53,53,53,53	0
6	BCL	L	302	66/66	0.97	0.16	32,42,70,71	0
9	FE	M	404	1/1	0.99	0.10	18,18,18,18	0

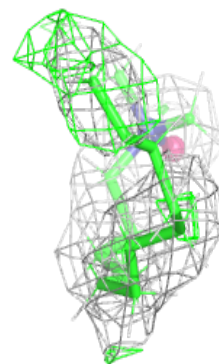
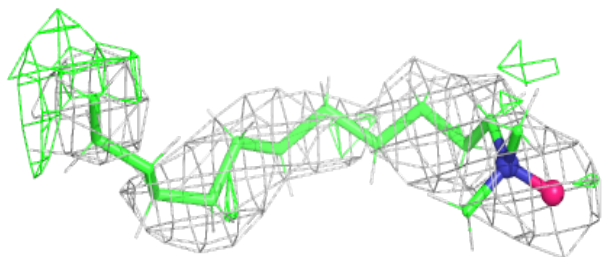
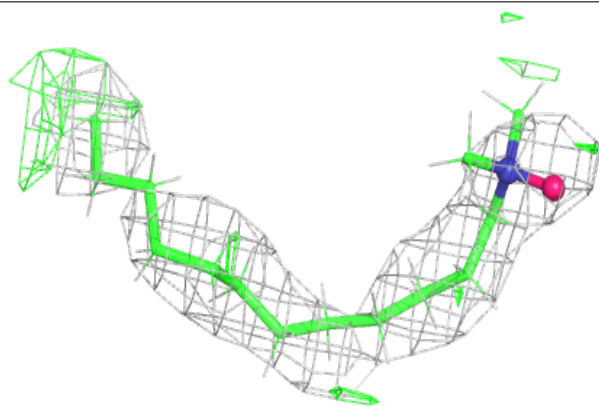
The following is a graphical depiction of the model fit to experimental electron density of all instances of the Ligand of Interest. In addition, ligands with molecular weight > 250 and outliers as shown on the geometry validation Tables will also be included. Each fit is shown from different orientation to approximate a three-dimensional view.

**Electron density around LDA L 308:**

$2mF_o-DF_c$  (at 0.7 rmsd) in gray  
 $mF_o-DF_c$  (at 3 rmsd) in purple (negative)  
and green (positive)

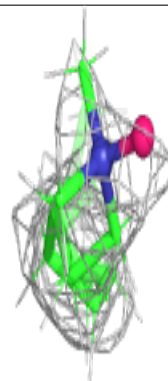
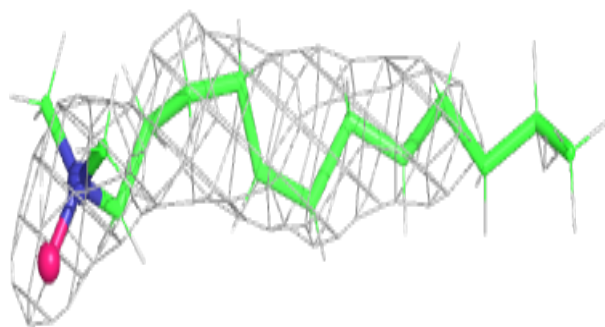
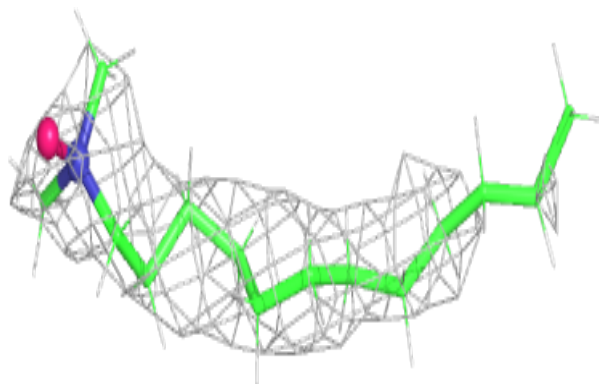
**Electron density around LDA L 307:**

$2mF_o-DF_c$  (at 0.7 rmsd) in gray  
 $mF_o-DF_c$  (at 3 rmsd) in purple (negative)  
and green (positive)

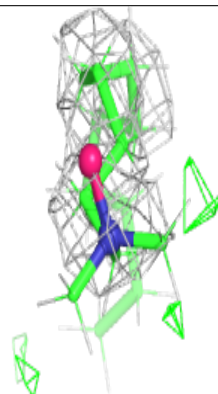
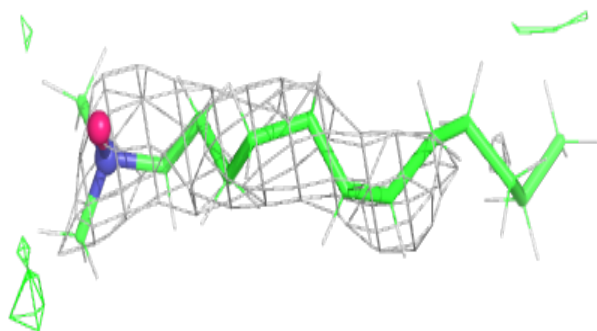
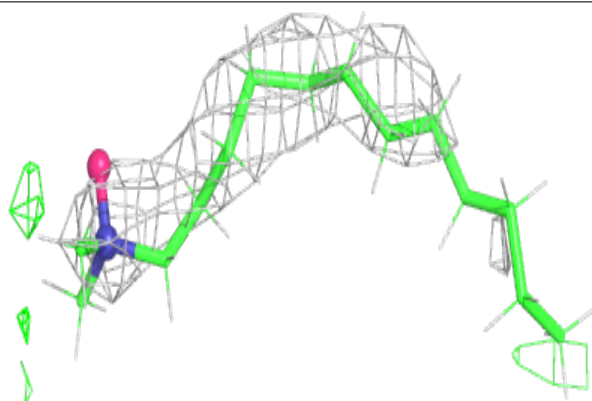


**Electron density around LDA M 409:**

$2mF_o-DF_c$  (at 0.7 rmsd) in gray  
 $mF_o-DF_c$  (at 3 rmsd) in purple (negative)  
and green (positive)

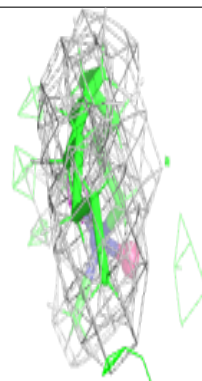
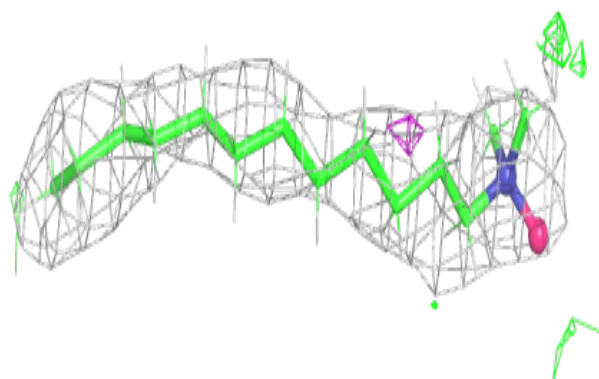
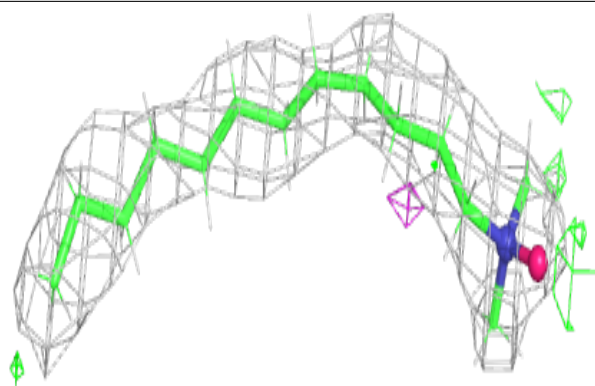
**Electron density around LDA L 306:**

$2mF_o-DF_c$  (at 0.7 rmsd) in gray  
 $mF_o-DF_c$  (at 3 rmsd) in purple (negative)  
and green (positive)

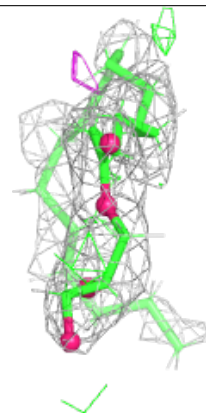
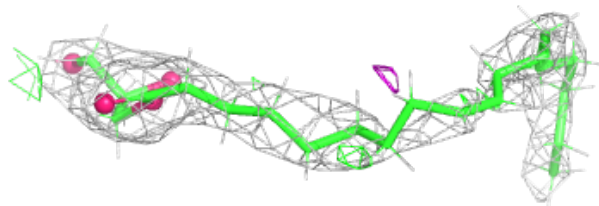


**Electron density around LDA M 405:**

$2mF_o-DF_c$  (at 0.7 rmsd) in gray  
 $mF_o-DF_c$  (at 3 rmsd) in purple (negative)  
and green (positive)

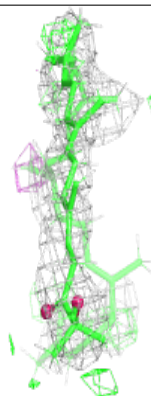
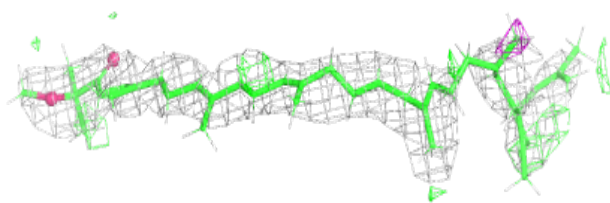
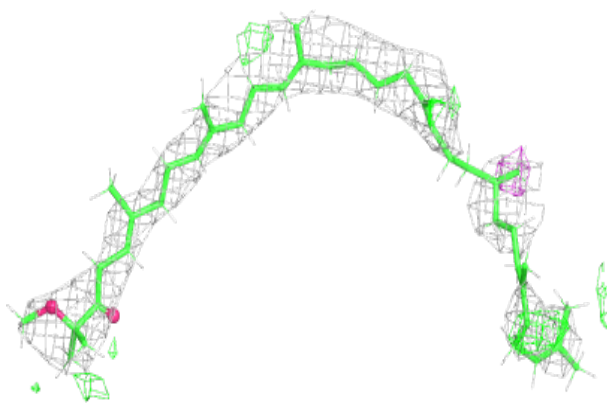
**Electron density around OLC L 305:**

$2mF_o-DF_c$  (at 0.7 rmsd) in gray  
 $mF_o-DF_c$  (at 3 rmsd) in purple (negative)  
and green (positive)

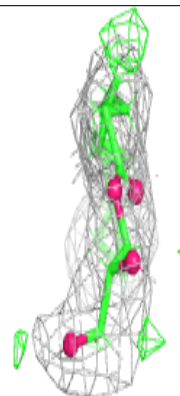
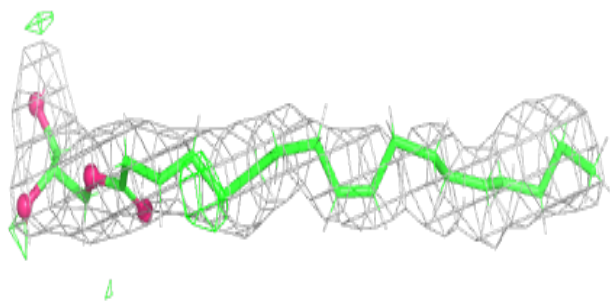
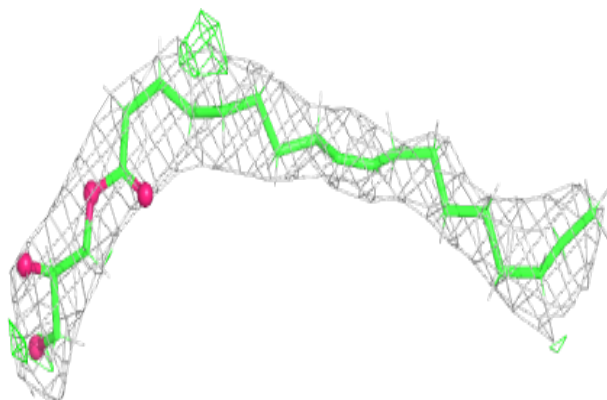


**Electron density around SPN M 408 (A):**

$2mF_o-DF_c$  (at 0.7 rmsd) in gray  
 $mF_o-DF_c$  (at 3 rmsd) in purple (negative)  
and green (positive)

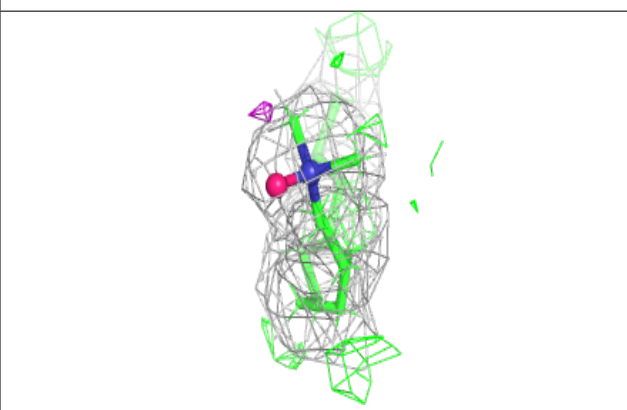
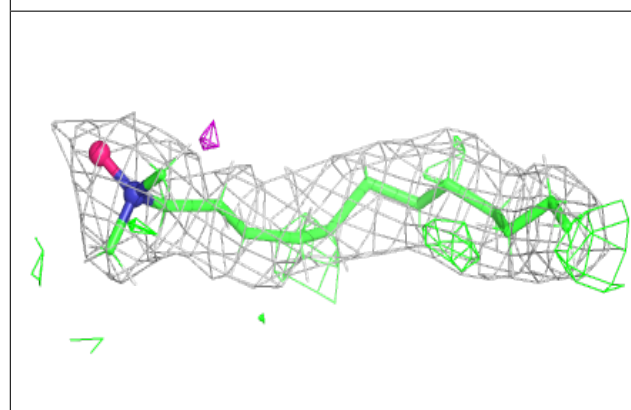
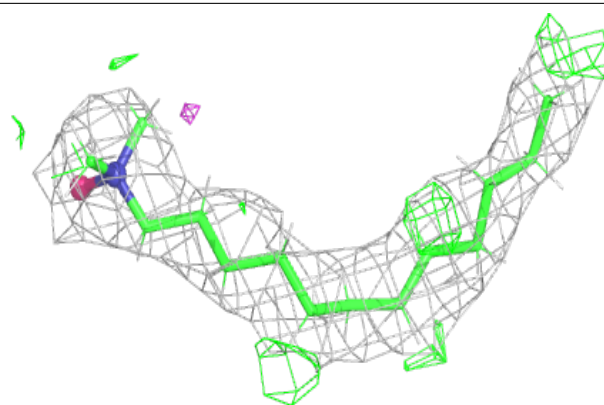
**Electron density around OLC M 407 (B):**

$2mF_o-DF_c$  (at 0.7 rmsd) in gray  
 $mF_o-DF_c$  (at 3 rmsd) in purple (negative)  
and green (positive)

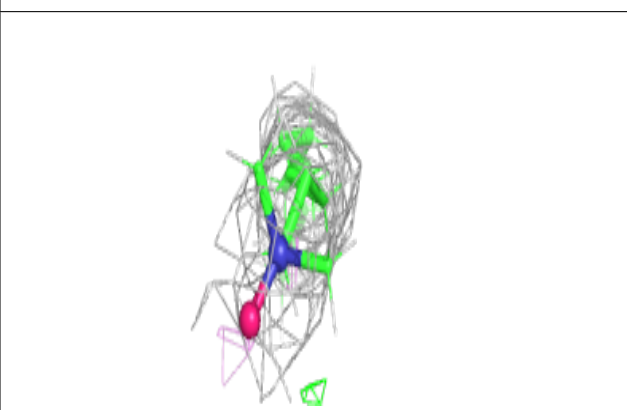
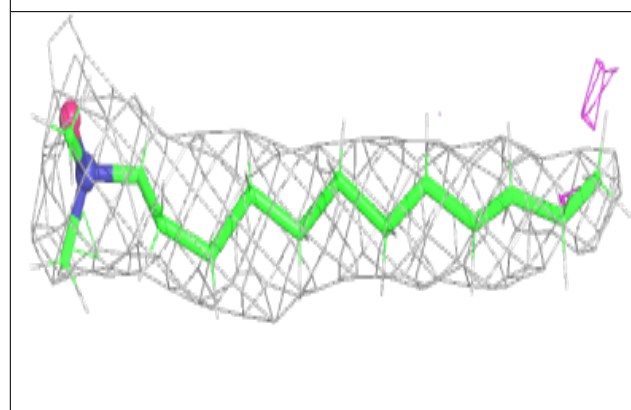
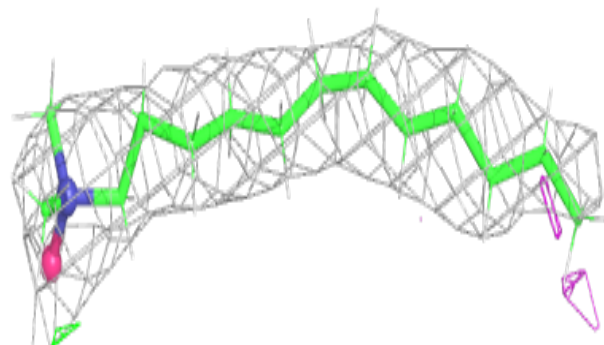


**Electron density around LDA M 410:**

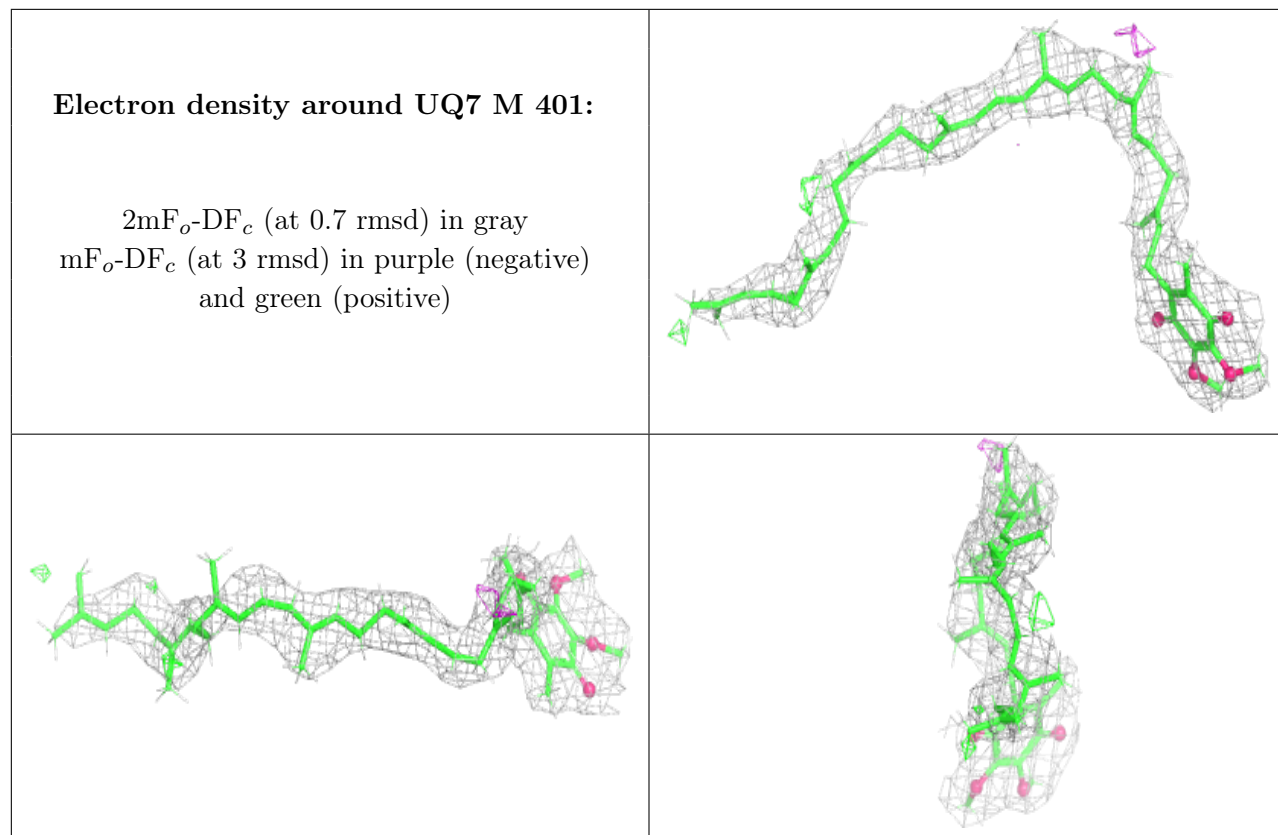
$2mF_o-DF_c$  (at 0.7 rmsd) in gray  
 $mF_o-DF_c$  (at 3 rmsd) in purple (negative)  
and green (positive)

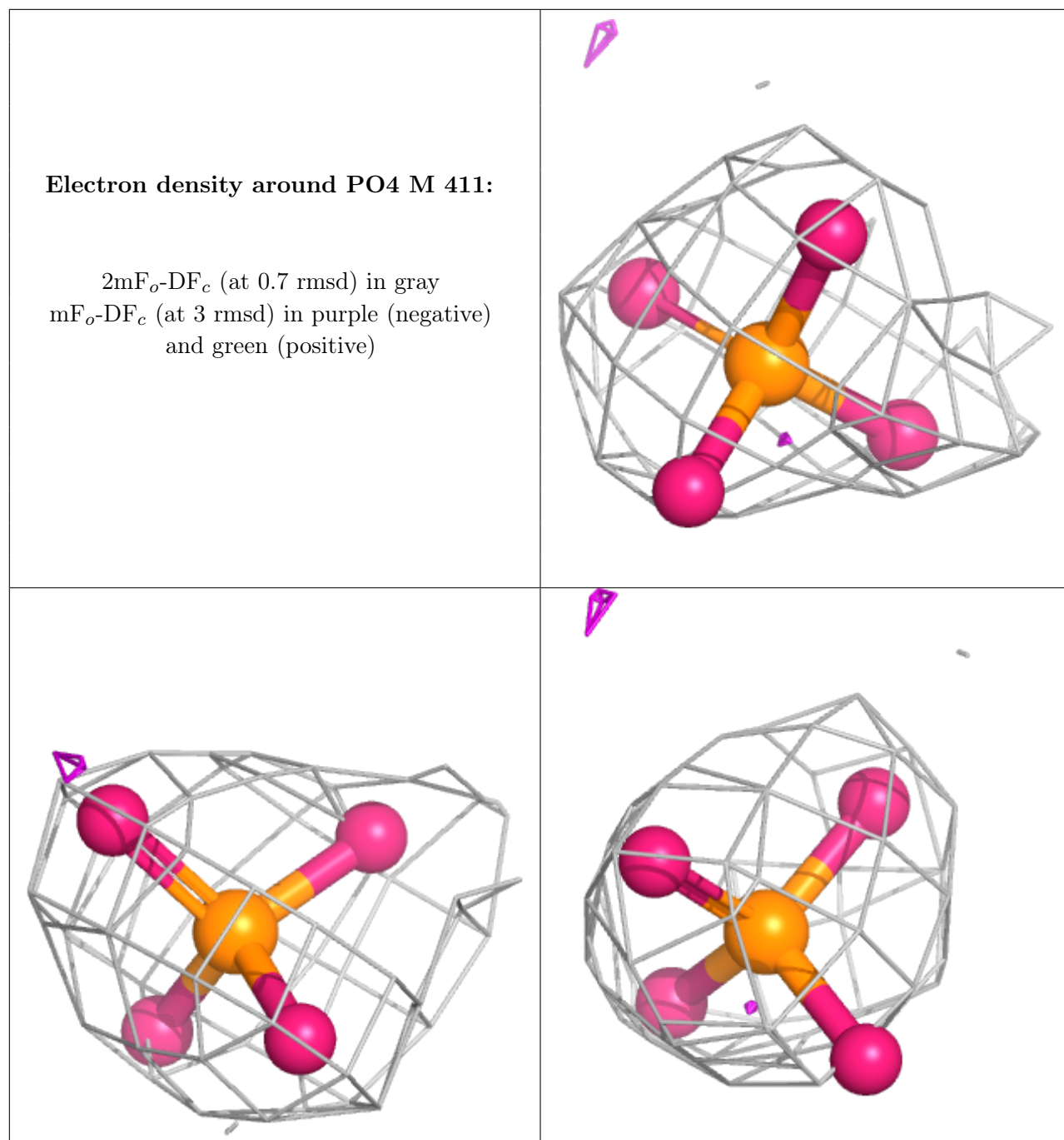
**Electron density around LDA H 301:**

$2mF_o-DF_c$  (at 0.7 rmsd) in gray  
 $mF_o-DF_c$  (at 3 rmsd) in purple (negative)  
and green (positive)



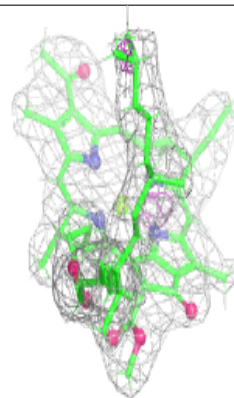
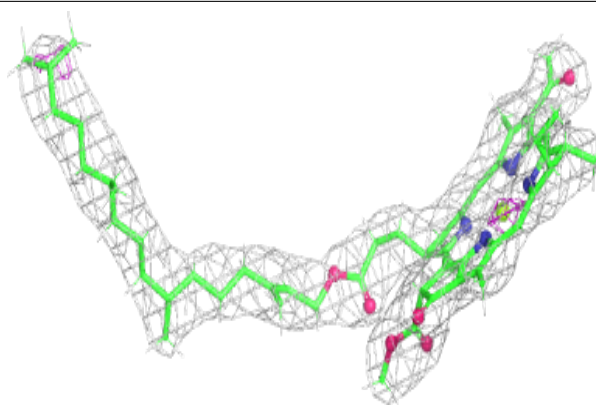






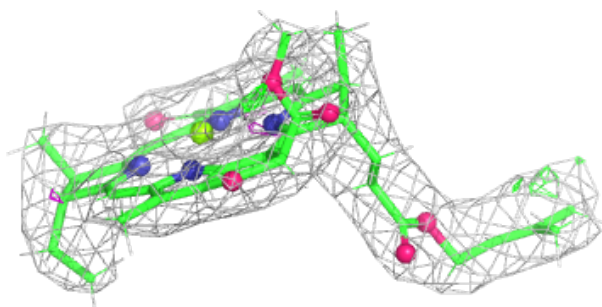
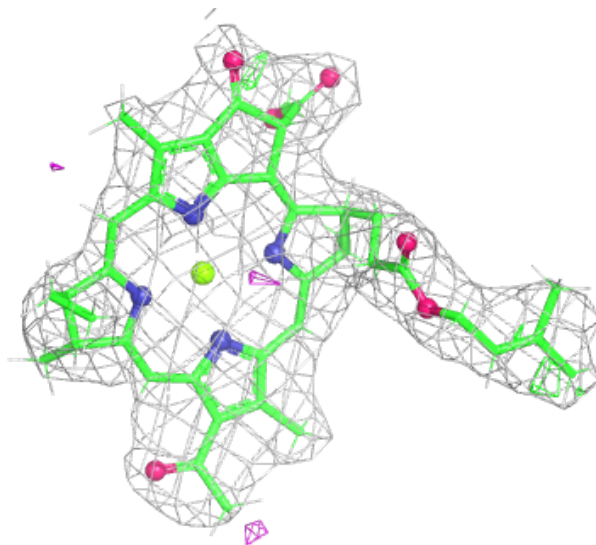
**Electron density around BCL L 303:**

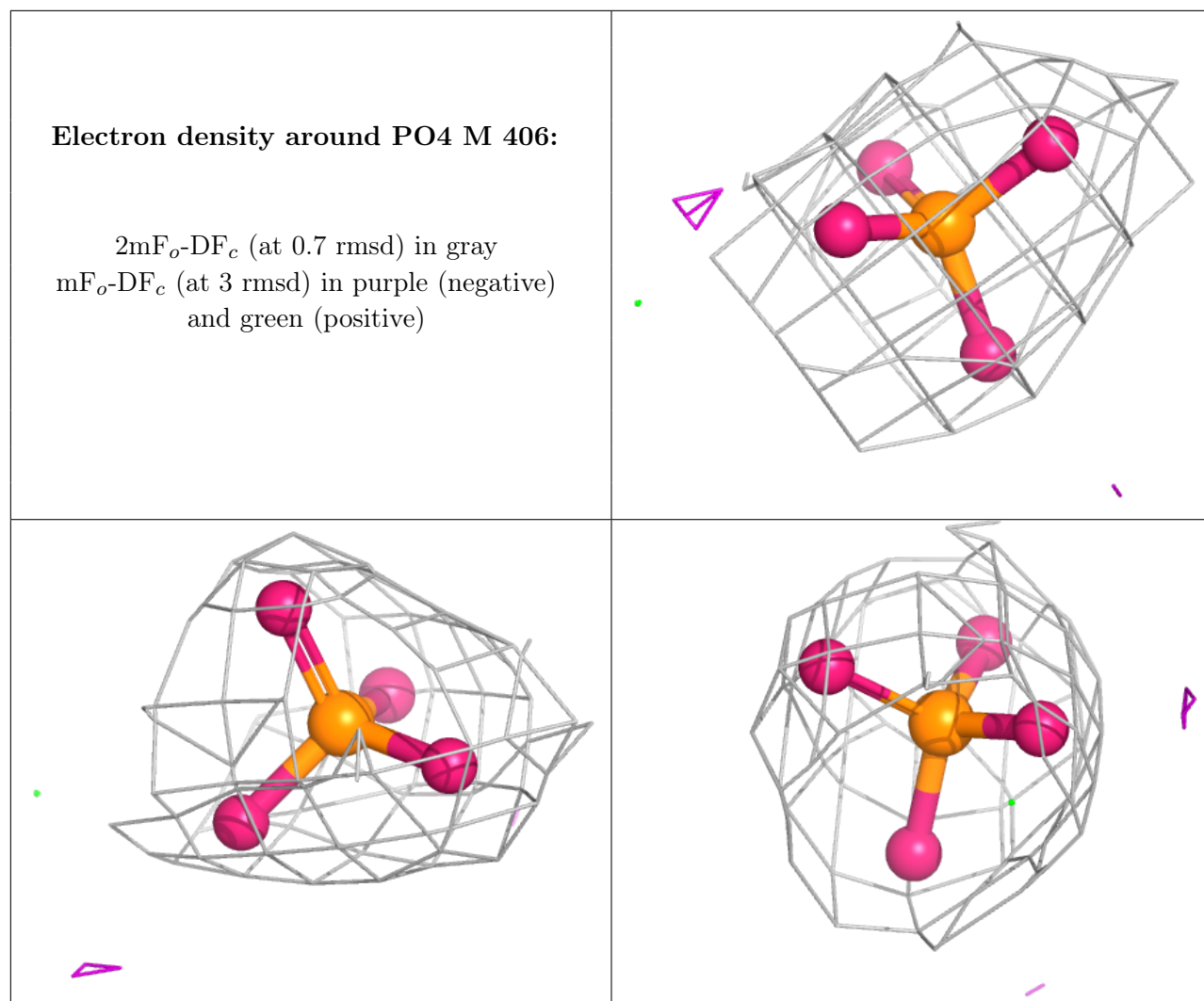
$2mF_o-DF_c$  (at 0.7 rmsd) in gray  
 $mF_o-DF_c$  (at 3 rmsd) in purple (negative)  
and green (positive)



**Electron density around BCL M 403:**

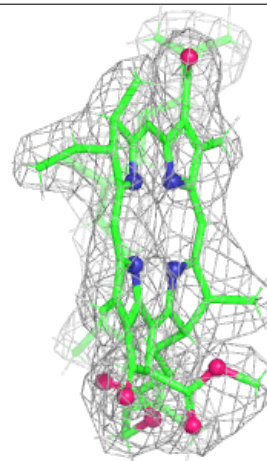
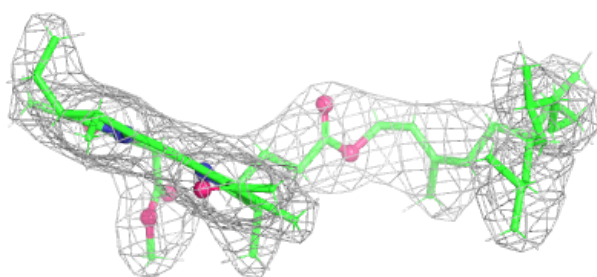
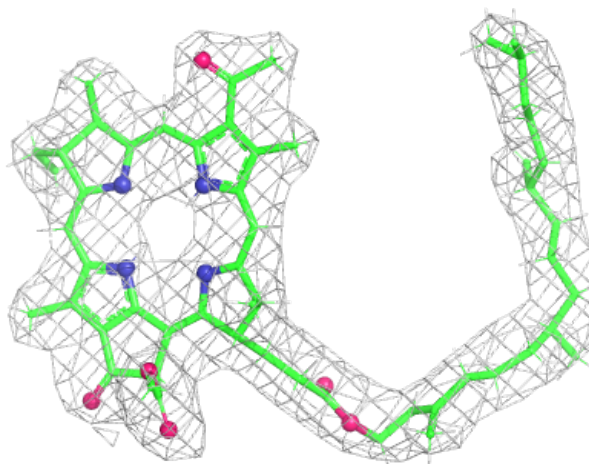
$2mF_o-DF_c$  (at 0.7 rmsd) in gray  
 $mF_o-DF_c$  (at 3 rmsd) in purple (negative)  
and green (positive)

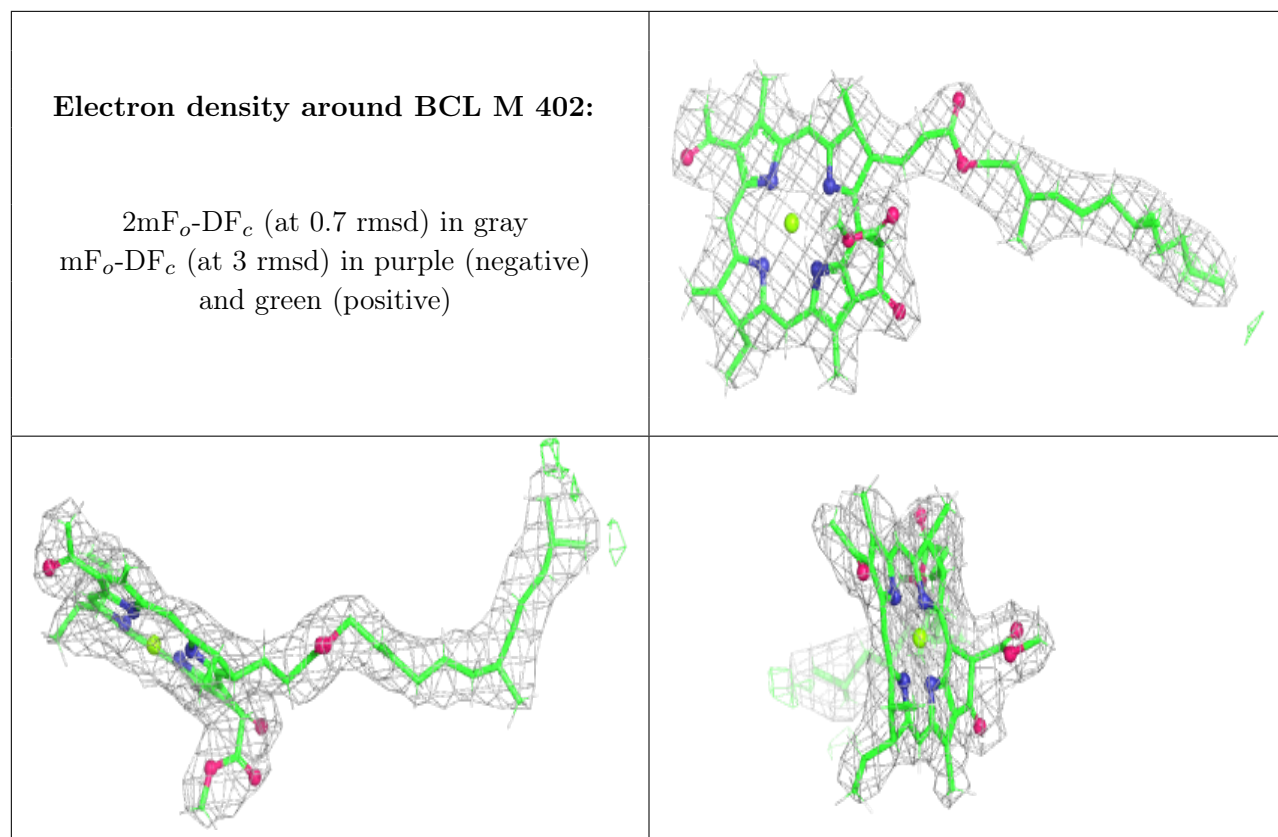




**Electron density around BPH L 301:**

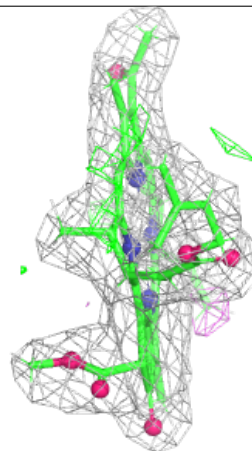
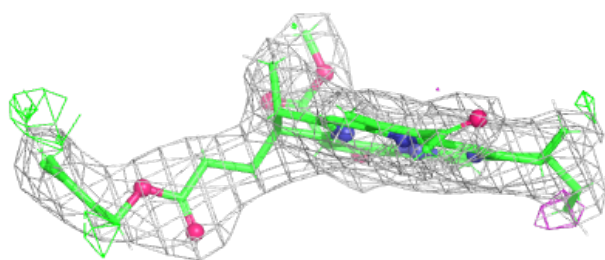
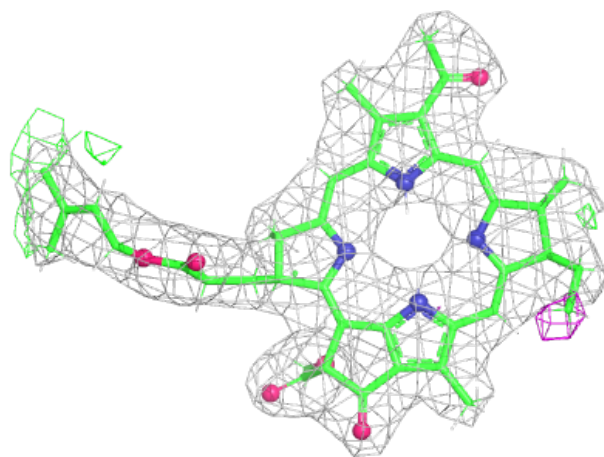
$2mF_o-DF_c$  (at 0.7 rmsd) in gray  
 $mF_o-DF_c$  (at 3 rmsd) in purple (negative)  
and green (positive)





**Electron density around BPH M 304:**

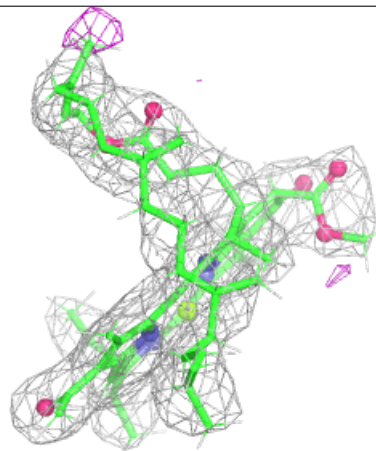
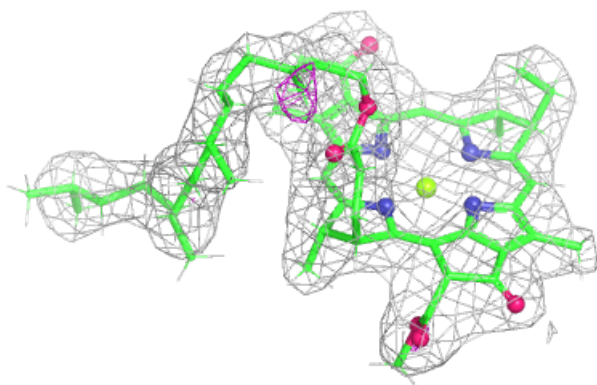
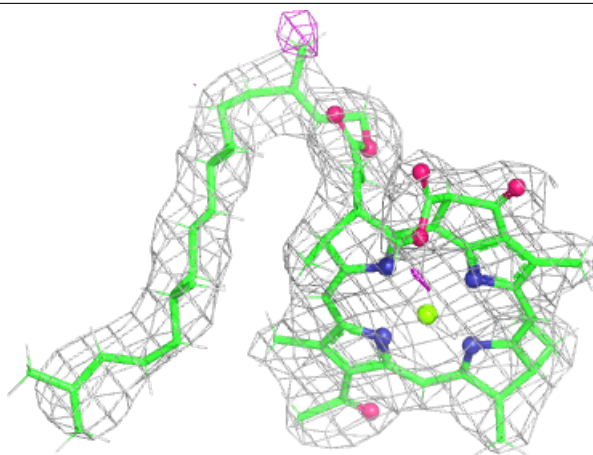
$2mF_o-DF_c$  (at 0.7 rmsd) in gray  
 $mF_o-DF_c$  (at 3 rmsd) in purple (negative)  
and green (positive)

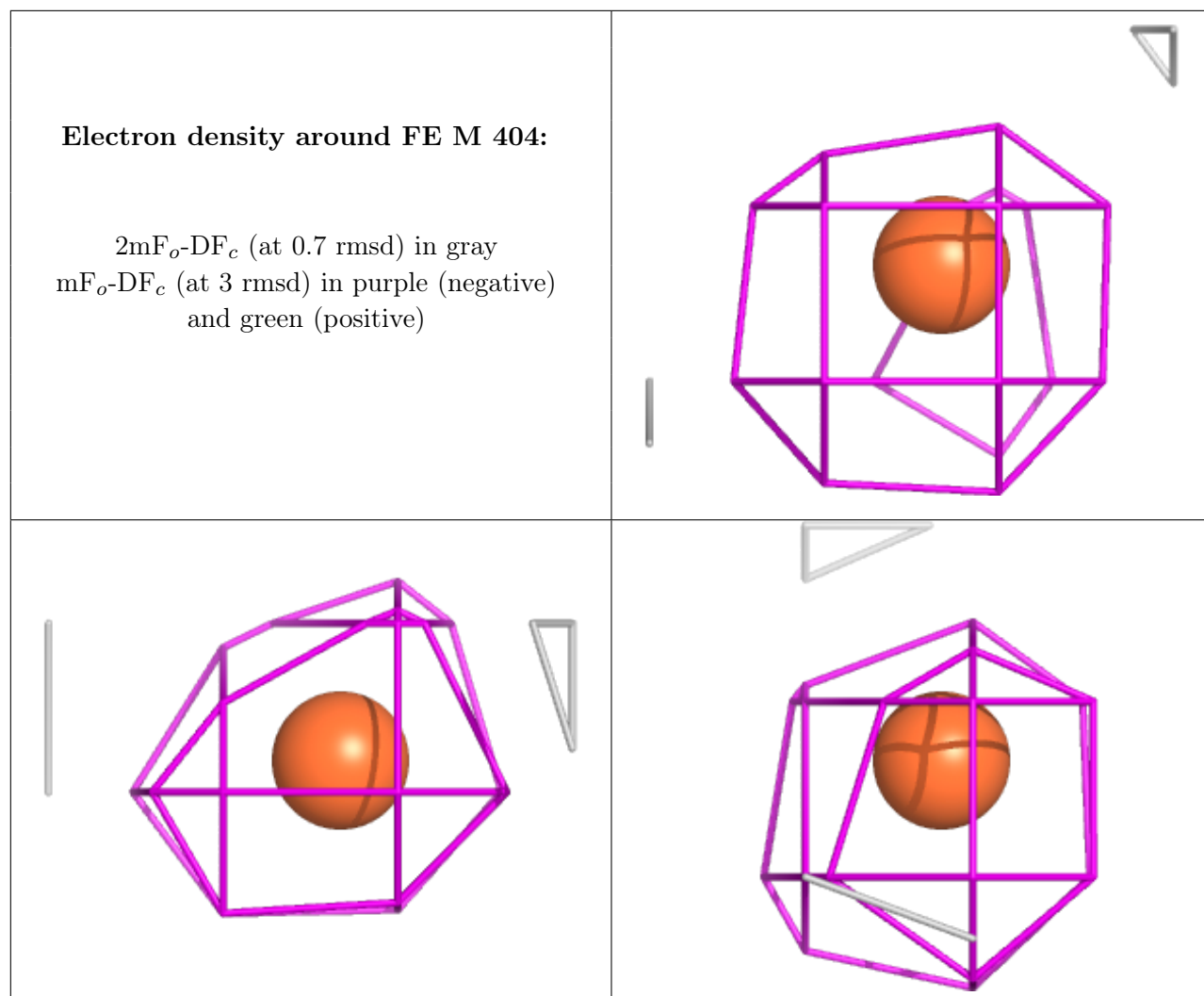




**Electron density around BCL L 302:**

$2mF_o-DF_c$  (at 0.7 rmsd) in gray  
 $mF_o-DF_c$  (at 3 rmsd) in purple (negative)  
and green (positive)





## 6.5 Other polymers [i](#)

There are no such residues in this entry.