



Full wwPDB X-ray Structure Validation Report ⓘ

Oct 20, 2024 – 01:05 AM EDT

PDB ID : 3Q8W
Title : A b-aminoacyl containing thiazolidine derivative and DPPIV complex
Authors : Lee, J.O.; Song, D.H.
Deposited on : 2011-01-07
Resolution : 3.64 Å(reported)

This is a Full wwPDB X-ray Structure Validation Report for a publicly released PDB entry.

We welcome your comments at validation@mail.wwpdb.org

A user guide is available at

<https://www.wwpdb.org/validation/2017/XrayValidationReportHelp>

with specific help available everywhere you see the ⓘ symbol.

The types of validation reports are described at

<http://www.wwpdb.org/validation/2017/FAQs#types>.

The following versions of software and data (see [references ⓘ](#)) were used in the production of this report:

MolProbity : 4.02b-467
Mogul : 2022.3.0, CSD as543be (2022)
Xtriage (Phenix) : 1.20.1
EDS : 3.0
buster-report : 1.1.7 (2018)
Percentile statistics : 20231227.v01 (using entries in the PDB archive December 27th 2023)
CCP4 : 9.0.003 (Gargrove)
Density-Fitness : 1.0.11
Ideal geometry (proteins) : Engh & Huber (2001)
Ideal geometry (DNA, RNA) : Parkinson et al. (1996)
Validation Pipeline (wwPDB-VP) : 2.39

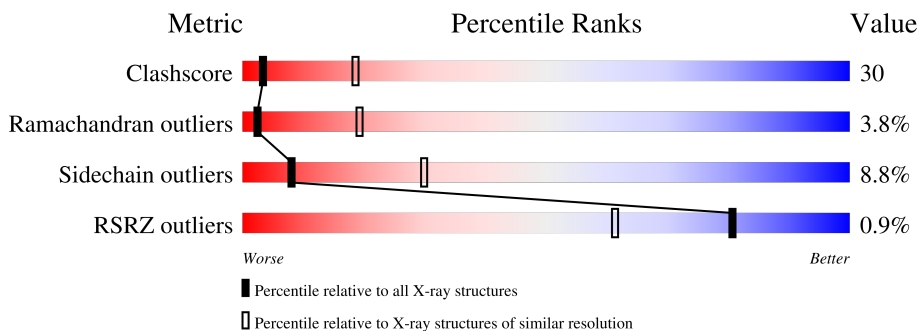
1 Overall quality at a glance

The following experimental techniques were used to determine the structure:

X-RAY DIFFRACTION

The reported resolution of this entry is 3.64 Å.

Percentile scores (ranging between 0-100) for global validation metrics of the entry are shown in the following graphic. The table shows the number of entries on which the scores are based.



Metric	Whole archive (#Entries)	Similar resolution (#Entries, resolution range(Å))
Clashscore	180529	1046 (3.76-3.52)
Ramachandran outliers	177936	1031 (3.76-3.52)
Sidechain outliers	177891	1029 (3.76-3.52)
RSRZ outliers	164620	1682 (3.78-3.50)

The table below summarises the geometric issues observed across the polymeric chains and their fit to the electron density. The red, orange, yellow and green segments of the lower bar indicate the fraction of residues that contain outliers for ≥ 3 , 2, 1 and 0 types of geometric quality criteria respectively. A grey segment represents the fraction of residues that are not modelled. The numeric value for each fraction is indicated below the corresponding segment, with a dot representing fractions $\leq 5\%$. The upper red bar (where present) indicates the fraction of residues that have poor fit to the electron density. The numeric value is given above the bar.

Mol	Chain	Length	Quality of chain
1	A	732	
1	B	732	

The following table lists non-polymeric compounds, carbohydrate monomers and non-standard residues in protein, DNA, RNA chains that are outliers for geometric or electron-density-fit criteria:

Mol	Type	Chain	Res	Chirality	Geometry	Clashes	Electron density
2	AZV	A	1	X	-	-	-
2	AZV	B	1	X	-	-	-

2 Entry composition

There are 2 unique types of molecules in this entry. The entry contains 11972 atoms, of which 0 are hydrogens and 0 are deuteriums.

In the tables below, the ZeroOcc column contains the number of atoms modelled with zero occupancy, the AltConf column contains the number of residues with at least one atom in alternate conformation and the Trace column contains the number of residues modelled with at most 2 atoms.

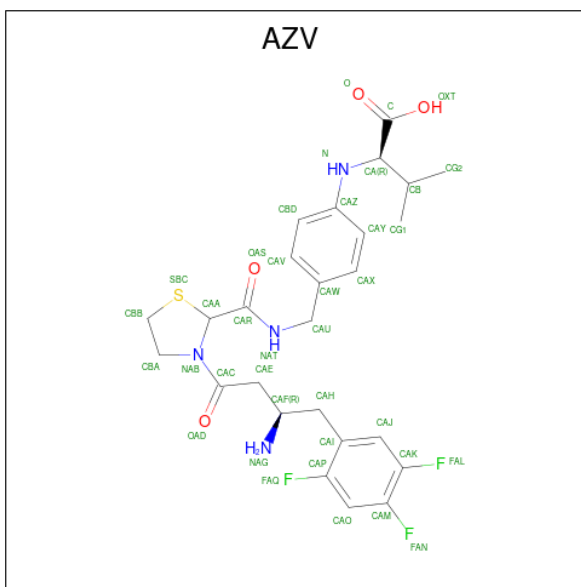
- Molecule 1 is a protein called Dipeptidyl peptidase 4.

Mol	Chain	Residues	Atoms					ZeroOcc	AltConf	Trace
			Total	C	N	O	S			
1	A	726	5948	3816	980	1126	26	0	0	0
1	B	726	5948	3816	980	1126	26	0	0	0

There are 12 discrepancies between the modelled and reference sequences:

Chain	Residue	Modelled	Actual	Comment	Reference
A	765	HIS	-	expression tag	UNP P27487
A	766	HIS	-	expression tag	UNP P27487
A	767	HIS	-	expression tag	UNP P27487
A	768	HIS	-	expression tag	UNP P27487
A	769	HIS	-	expression tag	UNP P27487
A	770	HIS	-	expression tag	UNP P27487
B	765	HIS	-	expression tag	UNP P27487
B	766	HIS	-	expression tag	UNP P27487
B	767	HIS	-	expression tag	UNP P27487
B	768	HIS	-	expression tag	UNP P27487
B	769	HIS	-	expression tag	UNP P27487
B	770	HIS	-	expression tag	UNP P27487

- Molecule 2 is N-(4-{{[(2R)-3-[(3R)-3-amino-4-(2,4,5-trifluorophenyl)butanoyl]-1,3-thiazolidin-2-yl}carbonyl)amino]methyl}phenyl)-D-valine (three-letter code: AZV) (formula: C₂₆H₃₁F₃N₄O₄S).

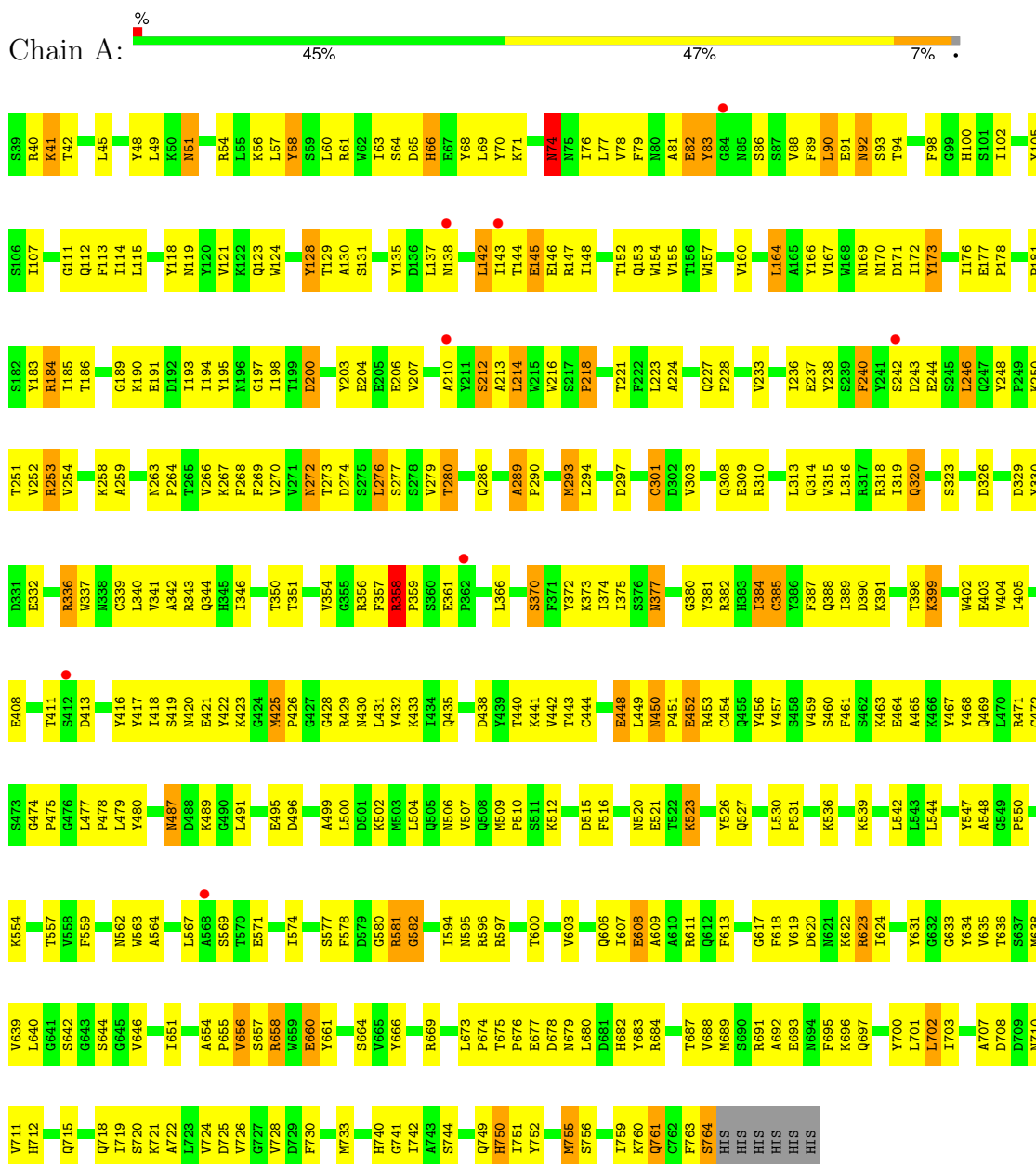


Mol	Chain	Residues	Atoms					ZeroOcc	AltConf	
			Total	C	F	N	O			S
2	A	1	Total	C	F	N	O	S	0	0
			38	26	3	4	4	1		
2	B	1	Total	C	F	N	O	S	0	0
			38	26	3	4	4	1		

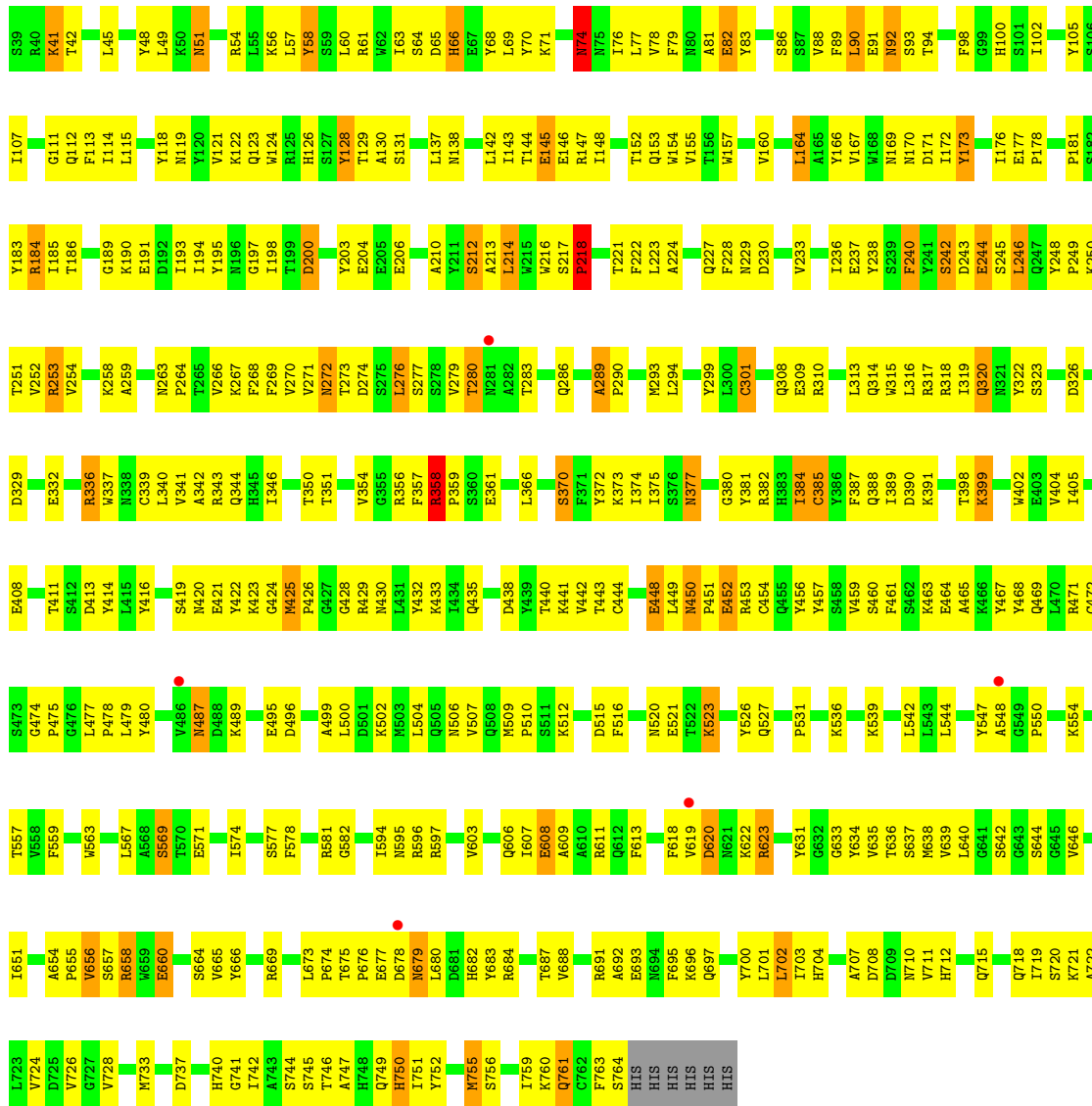
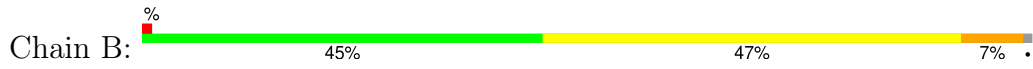
3 Residue-property plots i

These plots are drawn for all protein, RNA, DNA and oligosaccharide chains in the entry. The first graphic for a chain summarises the proportions of the various outlier classes displayed in the second graphic. The second graphic shows the sequence view annotated by issues in geometry and electron density. Residues are color-coded according to the number of geometric quality criteria for which they contain at least one outlier: green = 0, yellow = 1, orange = 2 and red = 3 or more. A red dot above a residue indicates a poor fit to the electron density ($RSRZ > 2$). Stretches of 2 or more consecutive residues without any outlier are shown as a green connector. Residues present in the sample, but not in the model, are shown in grey.

- Molecule 1: Dipeptidyl peptidase 4



- Molecule 1: Dipeptidyl peptidase 4



4 Data and refinement statistics i

Property	Value	Source
Space group	P 21 21 21	Depositor
Cell constants a, b, c, α , β , γ	118.41Å 124.50Å 133.12Å 90.00° 90.00° 90.00°	Depositor
Resolution (Å)	45.47 – 3.64 45.47 – 3.64	Depositor EDS
% Data completeness (in resolution range)	88.4 (45.47-3.64) 88.4 (45.47-3.64)	Depositor EDS
R_{merge}	(Not available)	Depositor
R_{sym}	(Not available)	Depositor
$\langle I/\sigma(I) \rangle$ ¹	11.21 (at 3.66Å)	Xtrriage
Refinement program	CNS 1.2	Depositor
R, R_{free}	0.282 , 0.324 0.272 , (Not available)	Depositor DCC
R_{free} test set	No test flags present.	wwPDB-VP
Wilson B-factor (Å ²)	59.1	Xtrriage
Anisotropy	0.901	Xtrriage
Bulk solvent k_{sol} (e/Å ³), B_{sol} (Å ²)	0.30 , 31.5	EDS
L-test for twinning ²	$\langle L \rangle = 0.40$, $\langle L^2 \rangle = 0.22$	Xtrriage
Estimated twinning fraction	0.066 for k,h,-l	Xtrriage
F_o, F_c correlation	0.81	EDS
Total number of atoms	11972	wwPDB-VP
Average B, all atoms (Å ²)	69.0	wwPDB-VP

Xtrriage's analysis on translational NCS is as follows: *The largest off-origin peak in the Patterson function is 2.88% of the height of the origin peak. No significant pseudotranslation is detected.*

¹Intensities estimated from amplitudes.

²Theoretical values of $\langle |L| \rangle$, $\langle L^2 \rangle$ for acentric reflections are 0.5, 0.333 respectively for untwinned datasets, and 0.375, 0.2 for perfectly twinned datasets.

5 Model quality [i](#)

5.1 Standard geometry [i](#)

Bond lengths and bond angles in the following residue types are not validated in this section: AZV

The Z score for a bond length (or angle) is the number of standard deviations the observed value is removed from the expected value. A bond length (or angle) with $|Z| > 5$ is considered an outlier worth inspection. RMSZ is the root-mean-square of all Z scores of the bond lengths (or angles).

Mol	Chain	Bond lengths		Bond angles	
		RMSZ	# Z >5	RMSZ	# Z >5
1	A	0.47	0/6119	0.68	2/8321 (0.0%)
1	B	0.48	0/6119	0.69	2/8321 (0.0%)
All	All	0.48	0/12238	0.69	4/16642 (0.0%)

There are no bond length outliers.

All (4) bond angle outliers are listed below:

Mol	Chain	Res	Type	Atoms	Z	Observed(°)	Ideal(°)
1	B	319	ILE	N-CA-C	-5.45	96.29	111.00
1	A	319	ILE	N-CA-C	-5.44	96.30	111.00
1	A	240	PHE	N-CA-C	-5.41	96.38	111.00
1	B	240	PHE	N-CA-C	-5.19	97.00	111.00

There are no chirality outliers.

There are no planarity outliers.

5.2 Too-close contacts [i](#)

In the following table, the Non-H and H(model) columns list the number of non-hydrogen atoms and hydrogen atoms in the chain respectively. The H(added) column lists the number of hydrogen atoms added and optimized by MolProbity. The Clashes column lists the number of clashes within the asymmetric unit, whereas Symm-Clashes lists symmetry-related clashes.

Mol	Chain	Non-H	H(model)	H(added)	Clashes	Symm-Clashes
1	A	5948	0	5667	357	0
1	B	5948	0	5667	351	0
2	A	38	0	29	1	0
2	B	38	0	29	7	0
All	All	11972	0	11392	692	0

The all-atom clashscore is defined as the number of clashes found per 1000 atoms (including hydrogen atoms). The all-atom clashscore for this structure is 30.

All (692) close contacts within the same asymmetric unit are listed below, sorted by their clash magnitude.

Atom-1	Atom-2	Interatomic distance (Å)	Clash overlap (Å)
1:B:92:ASN:HD22	1:B:92:ASN:H	1.17	0.92
1:A:107:ILE:HG12	1:A:114:ILE:HG12	1.53	0.91
1:A:92:ASN:H	1:A:92:ASN:HD22	1.20	0.89
1:B:107:ILE:HG12	1:B:114:ILE:HG12	1.54	0.89
1:A:310:ARG:HH12	1:A:389:ILE:HD13	1.39	0.86
1:A:41:LYS:HD3	1:A:41:LYS:H	1.40	0.84
1:B:310:ARG:HH12	1:B:389:ILE:HD13	1.42	0.84
1:A:316:LEU:HD12	1:A:323:SER:HB3	1.61	0.83
1:A:680:LEU:HD11	1:A:684:ARG:HE	1.44	0.83
1:B:316:LEU:HD12	1:B:323:SER:HB3	1.62	0.81
1:A:289:ALA:HB1	1:A:290:PRO:HA	1.64	0.80
1:A:377:ASN:ND2	1:A:381:TYR:H	1.80	0.80
1:B:41:LYS:H	1:B:41:LYS:HD3	1.45	0.79
1:B:289:ALA:HB1	1:B:290:PRO:HA	1.64	0.79
1:A:153:GLN:HE22	1:A:170:ASN:ND2	1.81	0.78
1:A:656:VAL:HG13	1:A:715:GLN:HE22	1.48	0.78
1:B:711:VAL:HG13	1:B:715:GLN:HE21	1.45	0.78
1:A:61:ARG:HH22	1:A:107:ILE:HB	1.49	0.78
1:A:176:ILE:HD11	1:A:276:LEU:HD11	1.66	0.77
1:B:377:ASN:ND2	1:B:381:TYR:H	1.81	0.77
1:B:61:ARG:HH22	1:B:107:ILE:HB	1.50	0.77
1:B:153:GLN:HE22	1:B:170:ASN:ND2	1.82	0.76
1:A:301:CYS:SG	1:A:316:LEU:HB2	2.26	0.75
1:A:711:VAL:HG13	1:A:715:GLN:HE21	1.50	0.75
1:A:49:LEU:HD22	1:A:749:GLN:HA	1.69	0.75
1:B:656:VAL:HG13	1:B:715:GLN:HE22	1.51	0.74
1:B:435:GLN:HB3	1:B:441:LYS:HB2	1.70	0.74
1:A:453:ARG:HH21	1:A:477:LEU:HB2	1.53	0.73
1:B:680:LEU:HD11	1:B:684:ARG:HE	1.52	0.73
1:B:49:LEU:HD22	1:B:749:GLN:HA	1.71	0.73
1:B:197:GLY:C	1:B:213:ALA:HB3	2.09	0.73
1:A:435:GLN:HB3	1:A:441:LYS:HB2	1.70	0.73
1:B:176:ILE:HD11	1:B:276:LEU:HD11	1.69	0.72
1:B:453:ARG:HH21	1:B:477:LEU:HB2	1.53	0.72
1:A:90:LEU:HD22	1:A:114:ILE:HD12	1.72	0.72
1:B:301:CYS:SG	1:B:316:LEU:HB2	2.29	0.72
1:A:92:ASN:HD22	1:A:92:ASN:N	1.88	0.71

Continued on next page...

Continued from previous page...

Atom-1	Atom-2	Interatomic distance (Å)	Clash overlap (Å)
1:B:263:ASN:HD22	1:B:318:ARG:HE	1.38	0.71
1:A:429:ARG:HB2	1:A:457:TYR:H	1.55	0.71
1:A:718:GLN:HE22	1:A:721:LYS:NZ	1.87	0.71
1:A:92:ASN:ND2	1:A:93:SER:H	1.89	0.71
1:A:405:ILE:HG12	1:A:419:SER:HA	1.72	0.71
1:A:253:ARG:HH22	1:B:253:ARG:HH22	1.38	0.70
1:A:479:LEU:HD12	1:A:496:ASP:HA	1.74	0.70
1:B:90:LEU:HD22	1:B:114:ILE:HD12	1.74	0.70
1:B:711:VAL:HG13	1:B:715:GLN:NE2	2.06	0.69
1:B:92:ASN:HD22	1:B:92:ASN:N	1.86	0.69
1:B:453:ARG:HH12	1:B:479:LEU:HD13	1.57	0.69
1:B:429:ARG:HB2	1:B:457:TYR:H	1.57	0.69
1:B:644:SER:HB2	1:B:646:VAL:HG23	1.75	0.69
1:A:377:ASN:HD21	1:A:381:TYR:H	1.39	0.69
1:B:718:GLN:HE22	1:B:721:LYS:NZ	1.91	0.69
1:A:384:ILE:HD12	1:A:384:ILE:H	1.58	0.68
1:A:197:GLY:C	1:A:213:ALA:HB3	2.14	0.68
1:B:71:LYS:HE2	1:B:105:TYR:OH	1.93	0.68
1:A:635:VAL:O	1:A:639:VAL:HG23	1.95	0.67
1:A:658:ARG:NH2	1:B:245:SER:HA	2.09	0.67
1:A:71:LYS:HE2	1:A:105:TYR:OH	1.94	0.67
1:B:479:LEU:HD12	1:B:496:ASP:HA	1.75	0.67
1:A:453:ARG:HH12	1:A:479:LEU:HD13	1.60	0.66
1:A:263:ASN:HD22	1:A:318:ARG:HE	1.43	0.66
1:B:92:ASN:H	1:B:92:ASN:ND2	1.91	0.66
1:A:711:VAL:HG13	1:A:715:GLN:NE2	2.09	0.66
1:B:121:VAL:HB	1:B:129:THR:HG23	1.77	0.66
1:B:92:ASN:ND2	1:B:93:SER:H	1.94	0.66
1:B:715:GLN:O	1:B:719:ILE:HG13	1.95	0.66
1:A:56:LYS:HE3	1:A:499:ALA:HB3	1.76	0.65
1:B:147:ARG:HG2	1:B:148:ILE:H	1.60	0.65
1:B:405:ILE:HG12	1:B:419:SER:HA	1.78	0.65
1:A:715:GLN:O	1:A:719:ILE:HG13	1.96	0.65
1:A:730:PHE:HE1	1:B:750:HIS:HE2	1.44	0.65
1:B:190:LYS:H	1:B:194:ILE:HB	1.61	0.65
1:B:377:ASN:HD21	1:B:381:TYR:H	1.43	0.65
1:A:531:PRO:HD3	1:A:574:ILE:HG12	1.77	0.65
1:B:118:TYR:O	1:B:130:ALA:HB1	1.97	0.65
1:B:531:PRO:HD3	1:B:574:ILE:HG12	1.79	0.65
1:A:751:ILE:HG23	1:A:752:TYR:N	2.12	0.65
1:A:656:VAL:HA	1:A:715:GLN:NE2	2.12	0.65

Continued on next page...

Continued from previous page...

Atom-1	Atom-2	Interatomic distance (Å)	Clash overlap (Å)
1:B:346:ILE:HD12	1:B:346:ILE:H	1.61	0.65
1:B:547:TYR:HB3	1:B:554:LYS:HD3	1.79	0.64
1:A:92:ASN:H	1:A:92:ASN:ND2	1.93	0.64
1:A:640:LEU:HD12	1:A:700:TYR:HD1	1.62	0.64
1:B:377:ASN:C	1:B:377:ASN:HD22	2.01	0.64
1:A:504:LEU:HD22	1:A:509:MET:SD	2.37	0.64
1:B:384:ILE:HD12	1:B:384:ILE:H	1.63	0.64
1:A:289:ALA:HA	1:A:294:LEU:HD21	1.80	0.64
1:A:644:SER:HB2	1:A:646:VAL:HG23	1.78	0.64
1:B:571:GLU:OE1	1:B:760:LYS:HE2	1.98	0.64
1:A:554:LYS:HB3	1:A:577:SER:HB3	1.80	0.63
1:B:57:LEU:HD22	1:B:480:TYR:OH	1.96	0.63
1:A:147:ARG:HG2	1:A:148:ILE:H	1.63	0.63
1:B:603:VAL:HG21	1:B:638:MET:HB2	1.79	0.63
1:A:289:ALA:HB1	1:A:290:PRO:CA	2.29	0.63
1:A:520:ASN:O	1:A:521:GLU:HB2	1.98	0.63
1:A:547:TYR:HB3	1:A:554:LYS:HD3	1.81	0.63
1:B:542:LEU:HD12	1:B:574:ILE:O	1.98	0.63
1:B:675:THR:N	1:B:680:LEU:HB2	2.13	0.63
1:A:595:ASN:ND2	1:A:596:ARG:HG3	2.14	0.63
1:A:346:ILE:HD12	1:A:346:ILE:H	1.63	0.62
1:A:453:ARG:NH1	1:A:479:LEU:HB2	2.14	0.62
1:A:658:ARG:HA	1:A:687:THR:HG22	1.81	0.62
1:B:635:VAL:O	1:B:639:VAL:HG23	1.99	0.62
1:B:658:ARG:HA	1:B:687:THR:HG22	1.81	0.62
1:B:755:MET:O	1:B:759:ILE:HG12	1.98	0.62
1:B:56:LYS:HE3	1:B:499:ALA:HB3	1.80	0.62
1:B:289:ALA:HB1	1:B:290:PRO:CA	2.29	0.62
1:B:718:GLN:HA	1:B:718:GLN:HE21	1.64	0.62
1:B:656:VAL:HA	1:B:715:GLN:NE2	2.15	0.61
1:A:153:GLN:HE22	1:A:170:ASN:HD21	1.47	0.61
1:A:724:VAL:O	1:B:746:THR:HB	2.00	0.61
1:B:153:GLN:HE22	1:B:170:ASN:HD21	1.49	0.61
1:B:453:ARG:NH1	1:B:479:LEU:HB2	2.14	0.61
1:B:520:ASN:O	1:B:521:GLU:HB2	2.00	0.61
1:B:554:LYS:HB3	1:B:577:SER:HB3	1.81	0.61
1:B:340:LEU:O	1:B:343:ARG:HB2	2.01	0.61
1:A:57:LEU:HD22	1:A:480:TYR:OH	2.01	0.60
1:A:472:CYS:O	1:A:478:PRO:HA	2.01	0.60
1:B:550:PRO:HD2	1:B:631:TYR:CE2	2.36	0.60
1:B:358:ARG:HH11	1:B:358:ARG:HB3	1.66	0.60

Continued on next page...

Continued from previous page...

Atom-1	Atom-2	Interatomic distance (Å)	Clash overlap (Å)
1:A:411:THR:C	1:A:413:ASP:H	2.04	0.60
1:A:550:PRO:HD2	1:A:631:TYR:CE2	2.36	0.60
1:A:718:GLN:HE21	1:A:718:GLN:HA	1.66	0.60
1:B:263:ASN:ND2	1:B:318:ARG:HE	1.99	0.60
1:B:611:ARG:NH1	1:B:611:ARG:HB2	2.16	0.60
1:A:358:ARG:HB3	1:A:358:ARG:HH11	1.65	0.60
1:A:554:LYS:HE3	1:A:577:SER:HB3	1.84	0.60
1:B:358:ARG:HB3	1:B:358:ARG:NH1	2.16	0.60
1:B:411:THR:C	1:B:413:ASP:H	2.05	0.60
1:B:453:ARG:O	1:B:453:ARG:HG2	2.02	0.60
1:A:190:LYS:H	1:A:194:ILE:HB	1.67	0.60
1:A:542:LEU:HD12	1:A:574:ILE:O	2.02	0.60
1:B:640:LEU:HD12	1:B:700:TYR:HD1	1.66	0.60
1:A:675:THR:N	1:A:680:LEU:HB2	2.17	0.59
1:B:472:CYS:O	1:B:478:PRO:HA	2.03	0.59
1:A:251:THR:HG21	1:B:251:THR:HG21	1.83	0.59
1:A:571:GLU:OE1	1:A:760:LYS:HE2	2.01	0.59
1:B:289:ALA:HA	1:B:294:LEU:HD21	1.85	0.59
1:A:377:ASN:C	1:A:377:ASN:HD22	2.04	0.59
1:A:358:ARG:HB3	1:A:358:ARG:NH1	2.17	0.59
1:B:61:ARG:NH1	1:B:63:ILE:HG22	2.18	0.59
1:A:755:MET:O	1:A:759:ILE:HG12	2.03	0.59
1:A:41:LYS:O	1:A:507:VAL:HG23	2.03	0.59
1:A:233:VAL:HG21	1:A:264:PRO:HB3	1.83	0.59
1:A:269:PHE:CE2	1:A:286:GLN:HB2	2.38	0.59
1:B:74:ASN:O	1:B:92:ASN:HB3	2.03	0.59
1:A:112:GLN:HG2	1:A:138:ASN:HD21	1.67	0.58
1:A:603:VAL:HG21	1:A:638:MET:HB2	1.86	0.58
1:B:64:SER:O	1:B:463:LYS:HG2	2.04	0.58
1:B:78:VAL:HB	1:B:89:PHE:HB2	1.85	0.58
1:A:121:VAL:HB	1:A:129:THR:HG23	1.84	0.58
1:A:475:PRO:O	1:A:559:PHE:HB2	2.02	0.58
1:B:112:GLN:HG2	1:B:138:ASN:HD21	1.68	0.58
1:A:102:ILE:HD13	1:A:118:TYR:HB3	1.85	0.58
1:B:448:GLU:HA	1:B:451:PRO:HD3	1.85	0.58
1:A:78:VAL:HB	1:A:89:PHE:HB2	1.86	0.58
1:A:253:ARG:HH22	1:B:253:ARG:NH2	2.02	0.58
1:B:41:LYS:O	1:B:507:VAL:HG23	2.04	0.58
1:B:233:VAL:HG21	1:B:264:PRO:HB3	1.85	0.58
1:B:237:GLU:HG2	1:B:253:ARG:HB3	1.85	0.58
1:A:720:SER:O	1:A:724:VAL:HG23	2.04	0.57

Continued on next page...

Continued from previous page...

Atom-1	Atom-2	Interatomic distance (Å)	Clash overlap (Å)
1:A:344:GLN:HE21	1:A:346:ILE:HD11	1.68	0.57
1:A:611:ARG:HB2	1:A:611:ARG:NH1	2.19	0.57
1:B:595:ASN:ND2	1:B:596:ARG:HG3	2.19	0.57
1:A:154:TRP:CD1	1:A:214:LEU:HD21	2.39	0.57
1:A:336:ARG:HH11	1:A:336:ARG:HB3	1.70	0.57
1:A:118:TYR:O	1:A:130:ALA:HB1	2.03	0.57
1:B:320:GLN:OE1	1:B:669:ARG:HD3	2.04	0.57
1:B:420:ASN:HA	1:B:428:GLY:O	2.04	0.57
1:B:751:ILE:HG23	1:B:752:TYR:N	2.20	0.57
1:A:751:ILE:HG23	1:A:752:TYR:H	1.68	0.57
1:B:42:THR:HB	1:B:569:SER:OG	2.05	0.57
1:B:457:TYR:HA	1:B:471:ARG:O	2.05	0.56
1:B:708:ASP:OD2	1:B:740:HIS:HA	2.05	0.56
1:A:92:ASN:HD22	1:A:93:SER:H	1.53	0.56
1:A:438:ASP:OD2	1:A:440:THR:HB	2.04	0.56
1:A:453:ARG:O	1:A:453:ARG:HG2	2.05	0.56
1:B:206:GLU:OE2	2:B:1:AZV:NAG	2.38	0.56
1:B:703:ILE:HA	1:B:733:MET:O	2.04	0.56
1:A:157:TRP:CZ3	1:A:164:LEU:HG	2.40	0.56
1:A:320:GLN:O	1:A:354:VAL:HG23	2.06	0.56
1:B:718:GLN:HA	1:B:718:GLN:NE2	2.20	0.56
1:B:477:LEU:HD22	1:B:500:LEU:HD23	1.88	0.56
1:A:448:GLU:HA	1:A:451:PRO:HD3	1.87	0.56
2:B:1:AZV:NAT	2:B:1:AZV:OAD	2.39	0.56
1:A:457:TYR:HA	1:A:471:ARG:O	2.05	0.56
1:A:673:LEU:O	1:A:678:ASP:HB3	2.06	0.55
1:B:198:ILE:N	1:B:213:ALA:HB3	2.20	0.55
1:B:720:SER:O	1:B:724:VAL:HG23	2.05	0.55
1:A:420:ASN:HA	1:A:428:GLY:O	2.06	0.55
1:A:477:LEU:HD22	1:A:500:LEU:HD23	1.88	0.55
1:A:606:GLN:O	1:A:609:ALA:HB3	2.06	0.55
1:A:718:GLN:HA	1:A:718:GLN:NE2	2.21	0.55
1:B:554:LYS:HE3	1:B:577:SER:HB3	1.86	0.55
1:A:74:ASN:O	1:A:92:ASN:HB3	2.05	0.55
1:B:268:PHE:CD2	1:B:313:LEU:HD21	2.41	0.55
1:B:547:TYR:CZ	2:B:1:AZV:HAY	2.42	0.55
1:A:224:ALA:HB2	1:A:270:VAL:HG22	1.88	0.55
1:A:221:THR:HG23	1:A:274:ASP:OD2	2.07	0.55
1:B:206:GLU:HG3	1:B:666:TYR:HB2	1.89	0.55
1:A:170:ASN:OD1	1:A:191:GLU:HA	2.07	0.55
1:A:236:ILE:CD1	1:B:249:PRO:HD2	2.37	0.55

Continued on next page...

Continued from previous page...

Atom-1	Atom-2	Interatomic distance (Å)	Clash overlap (Å)
1:B:45:LEU:O	1:B:48:TYR:HB3	2.07	0.55
1:B:475:PRO:O	1:B:559:PHE:HB2	2.07	0.55
1:A:42:THR:HB	1:A:569:SER:OG	2.07	0.55
1:B:221:THR:HG23	1:B:274:ASP:OD2	2.07	0.55
1:B:449:LEU:O	1:B:450:ASN:HB2	2.06	0.55
1:A:268:PHE:CD2	1:A:313:LEU:HD21	2.42	0.55
1:A:408:GLU:HB2	1:A:416:TYR:O	2.06	0.55
1:B:539:LYS:HB3	1:B:620:ASP:HB2	1.89	0.55
1:A:61:ARG:NH1	1:A:63:ILE:HG22	2.22	0.54
1:A:242:SER:HB2	1:A:246:LEU:HD12	1.89	0.54
1:B:147:ARG:HG2	1:B:148:ILE:N	2.21	0.54
1:B:273:THR:HA	1:B:276:LEU:CD2	2.38	0.54
1:B:344:GLN:HE21	1:B:346:ILE:HD11	1.71	0.54
1:A:113:PHE:CZ	1:A:178:PRO:HG2	2.42	0.54
1:A:237:GLU:HG2	1:A:253:ARG:HB3	1.88	0.54
1:A:253:ARG:NH2	1:B:253:ARG:HH22	2.05	0.54
1:B:102:ILE:HD13	1:B:118:TYR:HB3	1.89	0.54
1:B:320:GLN:O	1:B:354:VAL:HG23	2.07	0.54
1:A:718:GLN:HE22	1:A:721:LYS:HZ1	1.54	0.54
1:B:41:LYS:HD3	1:B:41:LYS:N	2.19	0.54
1:B:388:GLN:HB2	1:B:391:LYS:HB2	1.90	0.54
1:B:157:TRP:CZ3	1:B:164:LEU:HG	2.43	0.54
1:B:438:ASP:OD2	1:B:440:THR:HB	2.08	0.54
1:A:147:ARG:HG2	1:A:148:ILE:N	2.23	0.54
1:A:206:GLU:HG3	1:A:666:TYR:HB2	1.90	0.54
1:B:269:PHE:CE2	1:B:286:GLN:HB2	2.43	0.54
1:A:273:THR:HA	1:A:276:LEU:CD2	2.38	0.54
1:A:526:TYR:HB3	1:A:578:PHE:HD1	1.73	0.54
1:A:77:LEU:HD23	1:A:88:VAL:HG22	1.90	0.54
1:A:206:GLU:CD	1:A:666:TYR:HB2	2.28	0.54
1:B:51:ASN:C	1:B:51:ASN:HD22	2.11	0.54
1:B:504:LEU:HD22	1:B:509:MET:SD	2.48	0.53
1:B:240:PHE:HB3	1:B:250:LYS:HG3	1.90	0.53
1:A:420:ASN:ND2	1:A:426:PRO:HA	2.23	0.53
1:A:51:ASN:C	1:A:51:ASN:HD22	2.11	0.53
1:B:154:TRP:CD1	1:B:214:LEU:HD21	2.43	0.53
1:A:152:THR:HG22	1:A:153:GLN:N	2.23	0.53
1:A:417:TYR:O	1:A:431:LEU:HD12	2.08	0.53
1:A:442:VAL:O	1:A:442:VAL:HG13	2.09	0.53
1:A:703:ILE:HA	1:A:733:MET:O	2.07	0.53
1:A:719:ILE:O	1:A:722:ALA:HB3	2.09	0.53

Continued on next page...

Continued from previous page...

Atom-1	Atom-2	Interatomic distance (Å)	Clash overlap (Å)
1:B:94:THR:HG22	1:B:94:THR:O	2.08	0.53
1:A:64:SER:O	1:A:463:LYS:HG2	2.07	0.53
1:A:236:ILE:HD12	1:B:249:PRO:HD2	1.90	0.53
1:A:449:LEU:O	1:A:450:ASN:HB2	2.09	0.53
1:B:372:TYR:HB3	1:B:384:ILE:CG2	2.39	0.53
1:A:66:HIS:HB3	1:A:467:TYR:HE2	1.73	0.53
1:A:94:THR:HG22	1:A:94:THR:O	2.09	0.53
1:A:372:TYR:HB3	1:A:384:ILE:CG2	2.39	0.53
1:A:340:LEU:O	1:A:343:ARG:HB2	2.08	0.53
1:A:658:ARG:HE	1:B:244:GLU:HG2	1.74	0.53
1:A:123:GLN:HG2	1:A:124:TRP:CD2	2.45	0.52
1:A:263:ASN:ND2	1:A:318:ARG:HE	2.05	0.52
1:B:336:ARG:HB3	1:B:336:ARG:HH11	1.73	0.52
1:B:756:SER:O	1:B:760:LYS:HG2	2.09	0.52
1:B:408:GLU:HB2	1:B:416:TYR:O	2.10	0.52
1:A:420:ASN:HD22	1:A:426:PRO:HA	1.75	0.52
1:B:77:LEU:HD23	1:B:88:VAL:HG22	1.91	0.52
1:A:152:THR:HG22	1:A:153:GLN:H	1.75	0.52
1:A:259:ALA:HA	1:A:664:SER:HB3	1.91	0.52
1:A:722:ALA:O	1:A:726:VAL:HG23	2.08	0.52
1:B:184:ARG:HD2	1:B:186:THR:O	2.09	0.52
1:A:155:VAL:HG13	1:A:166:TYR:HB3	1.92	0.52
1:B:77:LEU:CD2	1:B:88:VAL:HG22	2.40	0.52
1:B:526:TYR:HB3	1:B:578:PHE:HD1	1.74	0.52
1:A:385:CYS:HB3	1:A:387:PHE:CE1	2.45	0.52
1:B:218:PRO:HB2	1:B:308:GLN:OE1	2.10	0.52
1:B:272:ASN:HD21	1:B:274:ASP:HB2	1.75	0.52
1:B:547:TYR:CE2	2:B:1:AZV:HAY	2.45	0.52
1:A:184:ARG:HD2	1:A:186:THR:O	2.11	0.51
1:B:92:ASN:HD22	1:B:93:SER:H	1.59	0.51
1:A:198:ILE:N	1:A:213:ALA:HB3	2.25	0.51
1:A:253:ARG:HH12	1:B:253:ARG:HH22	1.57	0.51
1:A:657:SER:HB3	1:A:719:ILE:HD11	1.93	0.51
1:B:435:GLN:HG2	1:B:438:ASP:H	1.76	0.51
1:B:550:PRO:HB3	1:B:594:ILE:HD11	1.92	0.51
1:A:435:GLN:HG2	1:A:438:ASP:H	1.75	0.51
1:A:92:ASN:ND2	1:A:93:SER:N	2.57	0.51
1:A:539:LYS:HB3	1:A:620:ASP:HB2	1.92	0.51
1:A:756:SER:O	1:A:760:LYS:HG2	2.11	0.51
1:B:402:TRP:CE3	1:B:421:GLU:HB2	2.46	0.51
1:A:269:PHE:CD2	1:A:286:GLN:HB2	2.46	0.51

Continued on next page...

Continued from previous page...

Atom-1	Atom-2	Interatomic distance (Å)	Clash overlap (Å)
1:A:459:VAL:HG22	1:A:460:SER:N	2.25	0.51
1:B:719:ILE:O	1:B:722:ALA:HB3	2.10	0.51
1:A:218:PRO:HB2	1:A:308:GLN:OE1	2.10	0.51
1:A:272:ASN:HD21	1:A:274:ASP:HB2	1.76	0.51
1:A:273:THR:HA	1:A:276:LEU:HG	1.93	0.51
1:B:76:ILE:HG23	1:B:76:ILE:O	2.11	0.51
1:B:459:VAL:HG22	1:B:460:SER:N	2.25	0.51
1:B:273:THR:HA	1:B:276:LEU:HG	1.93	0.51
1:A:41:LYS:HD3	1:A:41:LYS:N	2.15	0.50
1:B:374:ILE:HG22	1:B:382:ARG:HB3	1.92	0.50
1:A:276:LEU:HD12	1:A:277:SER:N	2.26	0.50
1:B:651:ILE:HG12	1:B:701:LEU:HB3	1.93	0.50
1:B:276:LEU:HD12	1:B:277:SER:N	2.26	0.50
1:B:636:THR:O	1:B:640:LEU:HG	2.11	0.50
1:B:516:PHE:CD2	1:B:523:LYS:HB2	2.46	0.50
1:B:673:LEU:O	1:B:678:ASP:HB3	2.10	0.50
1:B:152:THR:HG22	1:B:153:GLN:N	2.27	0.50
1:B:290:PRO:O	1:B:294:LEU:HG	2.11	0.50
1:B:607:ILE:HG12	1:B:639:VAL:HG13	1.93	0.50
1:A:253:ARG:HH22	1:B:253:ARG:HH12	1.59	0.50
1:B:358:ARG:HG2	1:B:359:PRO:HD2	1.93	0.50
1:B:718:GLN:HE22	1:B:721:LYS:HZ1	1.58	0.50
1:B:170:ASN:OD1	1:B:191:GLU:HA	2.11	0.50
1:B:454:CYS:HB3	1:B:457:TYR:CE1	2.46	0.50
1:A:66:HIS:HB3	1:A:467:TYR:CE2	2.46	0.50
1:A:636:THR:O	1:A:640:LEU:HG	2.12	0.50
1:B:242:SER:HB2	1:B:246:LEU:HD12	1.94	0.50
1:B:301:CYS:HB2	1:B:314:GLN:HB3	1.94	0.50
1:A:76:ILE:HG23	1:A:76:ILE:O	2.12	0.49
1:A:77:LEU:CD2	1:A:88:VAL:HG22	2.41	0.49
1:A:539:LYS:HD2	1:A:539:LYS:N	2.27	0.49
1:B:259:ALA:HA	1:B:664:SER:HB3	1.94	0.49
1:B:66:HIS:HB3	1:B:467:TYR:HE2	1.77	0.49
1:B:442:VAL:HG13	1:B:442:VAL:O	2.11	0.49
1:B:422:TYR:HB3	1:B:430:ASN:ND2	2.27	0.49
1:B:263:ASN:CG	1:B:318:ARG:HH21	2.15	0.49
1:A:216:TRP:CD2	1:A:223:LEU:HD13	2.47	0.49
1:A:374:ILE:HG22	1:A:382:ARG:HB3	1.93	0.49
1:A:388:GLN:HB2	1:A:391:LYS:HB2	1.92	0.49
1:A:416:TYR:CD2	1:A:433:LYS:HB3	2.48	0.49
1:A:515:ASP:CG	1:A:516:PHE:H	2.16	0.49

Continued on next page...

Continued from previous page...

Atom-1	Atom-2	Interatomic distance (Å)	Clash overlap (Å)
1:A:761:GLN:C	1:A:763:PHE:H	2.15	0.49
1:B:236:ILE:HG12	1:B:712:HIS:CE1	2.48	0.49
1:B:606:GLN:O	1:B:609:ALA:HB3	2.12	0.49
1:B:145:GLU:HG2	1:B:146:GLU:HG2	1.94	0.49
1:A:443:THR:HG22	1:A:444:CYS:O	2.12	0.49
1:B:761:GLN:C	1:B:763:PHE:H	2.15	0.49
1:B:751:ILE:HG23	1:B:752:TYR:H	1.77	0.49
1:B:105:TYR:HA	1:B:115:LEU:O	2.13	0.49
1:B:293:MET:HG2	1:B:315:TRP:HB3	1.95	0.49
1:B:487:ASN:OD1	1:B:489:LYS:HD3	2.12	0.49
1:B:722:ALA:O	1:B:726:VAL:HG23	2.12	0.49
1:A:240:PHE:HB3	1:A:250:LYS:HG3	1.95	0.48
1:A:310:ARG:NH1	1:A:389:ILE:HD13	2.18	0.48
1:B:92:ASN:N	1:B:92:ASN:ND2	2.57	0.48
1:B:384:ILE:HD11	1:B:404:VAL:HG11	1.95	0.48
1:A:263:ASN:CG	1:A:318:ARG:HH21	2.17	0.48
1:B:155:VAL:HG13	1:B:166:TYR:HB3	1.95	0.48
1:B:385:CYS:HB3	1:B:387:PHE:CE1	2.48	0.48
1:B:266:VAL:HG22	1:B:267:LYS:N	2.28	0.48
1:B:422:TYR:HB2	1:B:432:TYR:OH	2.13	0.48
1:B:461:PHE:CD2	1:B:468:TYR:HB3	2.48	0.48
1:A:326:ASP:OD1	1:A:339:CYS:HB3	2.13	0.48
1:B:416:TYR:CD2	1:B:433:LYS:HB3	2.48	0.48
1:B:651:ILE:HG12	1:B:701:LEU:HD13	1.96	0.48
1:B:654:ALA:N	1:B:655:PRO:CD	2.76	0.48
1:A:679:ASN:HD21	1:A:682:HIS:HB2	1.79	0.48
1:B:66:HIS:HB3	1:B:467:TYR:CE2	2.49	0.48
1:B:640:LEU:HD12	1:B:700:TYR:CD1	2.48	0.48
1:B:654:ALA:N	1:B:655:PRO:HD3	2.28	0.48
1:A:176:ILE:HD11	1:A:276:LEU:CD1	2.41	0.48
1:A:216:TRP:CZ3	1:A:273:THR:HG21	2.48	0.48
1:A:258:LYS:NZ	1:A:712:HIS:HD2	2.11	0.48
1:A:290:PRO:O	1:A:294:LEU:HG	2.14	0.48
1:A:751:ILE:HG12	1:A:755:MET:SD	2.53	0.48
1:A:45:LEU:O	1:A:48:TYR:HB3	2.13	0.48
1:B:238:TYR:CE2	1:B:707:ALA:HA	2.49	0.48
1:B:152:THR:HG22	1:B:153:GLN:H	1.77	0.48
1:B:299:TYR:CE1	1:B:665:VAL:HG22	2.49	0.48
1:A:336:ARG:HB3	1:A:336:ARG:NH1	2.29	0.48
1:A:356:ARG:HH12	1:A:405:ILE:HA	1.78	0.48
1:B:272:ASN:ND2	1:B:274:ASP:H	2.12	0.48

Continued on next page...

Continued from previous page...

Atom-1	Atom-2	Interatomic distance (Å)	Clash overlap (Å)
1:A:236:ILE:HG12	1:A:712:HIS:CE1	2.49	0.47
1:A:459:VAL:HG23	1:A:469:GLN:O	2.14	0.47
1:A:651:ILE:HG12	1:A:701:LEU:HB3	1.96	0.47
1:A:683:TYR:O	1:A:687:THR:HG23	2.14	0.47
1:B:224:ALA:HB2	1:B:270:VAL:HG22	1.96	0.47
1:A:113:PHE:CE2	1:A:178:PRO:HG2	2.49	0.47
1:A:173:TYR:HA	1:A:183:TYR:O	2.14	0.47
1:A:195:TYR:CE2	1:A:200:ASP:HA	2.48	0.47
1:A:343:ARG:HE	1:A:389:ILE:HD12	1.80	0.47
1:A:454:CYS:HB3	1:A:457:TYR:CE1	2.50	0.47
1:A:633:GLY:HA3	1:A:655:PRO:HB3	1.96	0.47
1:A:105:TYR:HA	1:A:115:LEU:O	2.14	0.47
1:A:293:MET:HG2	1:A:315:TRP:HB3	1.95	0.47
1:A:516:PHE:CD2	1:A:523:LYS:HB2	2.49	0.47
1:B:341:VAL:C	1:B:343:ARG:H	2.17	0.47
1:B:512:LYS:HE3	1:B:527:GLN:NE2	2.29	0.47
1:A:375:ILE:O	1:A:382:ARG:HA	2.14	0.47
1:A:438:ASP:OD2	1:A:441:LYS:HG2	2.15	0.47
1:B:435:GLN:HB3	1:B:441:LYS:CB	2.41	0.47
1:A:238:TYR:CE2	1:A:707:ALA:HA	2.49	0.47
1:A:119:ASN:O	1:A:121:VAL:HG23	2.15	0.47
1:A:124:TRP:CH2	1:A:254:VAL:HG21	2.50	0.47
1:A:422:TYR:HB3	1:A:430:ASN:ND2	2.30	0.47
1:A:708:ASP:OD2	1:A:740:HIS:HA	2.14	0.47
1:B:216:TRP:CZ3	1:B:273:THR:HG21	2.50	0.47
1:A:402:TRP:CE3	1:A:421:GLU:HB2	2.50	0.47
1:A:451:PRO:HA	1:A:454:CYS:O	2.15	0.47
1:B:269:PHE:CD2	1:B:286:GLN:HB2	2.50	0.47
1:B:539:LYS:N	1:B:539:LYS:HD2	2.30	0.47
1:B:683:TYR:O	1:B:687:THR:HG23	2.15	0.47
1:B:751:ILE:HG12	1:B:755:MET:SD	2.54	0.47
1:A:422:TYR:HB2	1:A:432:TYR:OH	2.15	0.47
1:B:74:ASN:C	1:B:92:ASN:HB3	2.35	0.47
1:B:92:ASN:ND2	1:B:93:SER:N	2.61	0.47
1:B:443:THR:HG22	1:B:444:CYS:O	2.14	0.47
1:A:206:GLU:CG	1:A:666:TYR:HB2	2.45	0.47
1:B:343:ARG:HE	1:B:389:ILE:HD12	1.80	0.47
1:B:578:PHE:CD2	1:B:609:ALA:HB2	2.50	0.47
1:A:90:LEU:HD22	1:A:114:ILE:CD1	2.43	0.46
1:A:607:ILE:HG12	1:A:639:VAL:HG13	1.96	0.46
1:A:634:TYR:OH	1:A:638:MET:HE2	2.15	0.46

Continued on next page...

Continued from previous page...

Atom-1	Atom-2	Interatomic distance (Å)	Clash overlap (Å)
1:A:725:ASP:HA	1:B:746:THR:HG21	1.95	0.46
1:B:195:TYR:CE2	1:B:200:ASP:HA	2.51	0.46
1:B:270:VAL:HG11	1:B:337:TRP:CZ2	2.51	0.46
1:B:438:ASP:OD2	1:B:441:LYS:HG2	2.15	0.46
1:B:459:VAL:HG23	1:B:469:GLN:O	2.15	0.46
1:B:657:SER:HB3	1:B:719:ILE:HD11	1.96	0.46
1:B:79:PHE:CE1	1:B:86:SER:HB3	2.51	0.46
1:B:375:ILE:O	1:B:382:ARG:HA	2.16	0.46
1:B:741:GLY:O	1:B:742:ILE:C	2.53	0.46
1:A:384:ILE:HD11	1:A:404:VAL:HG11	1.96	0.46
1:A:429:ARG:HG3	1:A:456:TYR:CE1	2.51	0.46
1:A:654:ALA:N	1:A:655:PRO:HD3	2.30	0.46
1:B:693:GLU:O	1:B:696:LYS:HG3	2.15	0.46
1:A:68:TYR:CE1	1:A:79:PHE:HB2	2.51	0.46
1:B:170:ASN:ND2	1:B:198:ILE:HD11	2.31	0.46
1:B:258:LYS:NZ	1:B:712:HIS:HD2	2.13	0.46
1:A:79:PHE:CE1	1:A:86:SER:HB3	2.51	0.46
1:A:620:ASP:OD2	1:A:623:ARG:HB2	2.15	0.46
1:B:68:TYR:CE1	1:B:79:PHE:HB2	2.51	0.46
1:A:128:TYR:N	1:A:128:TYR:CD2	2.84	0.46
1:A:145:GLU:HG2	1:A:146:GLU:HG2	1.97	0.46
1:A:487:ASN:OD1	1:A:489:LYS:HD3	2.15	0.46
1:A:636:THR:O	1:A:636:THR:HG22	2.16	0.46
1:B:523:LYS:H	1:B:523:LYS:HD2	1.80	0.46
1:A:512:LYS:HE3	1:A:527:GLN:NE2	2.30	0.46
1:A:718:GLN:HE21	1:A:718:GLN:CA	2.26	0.46
1:B:128:TYR:N	1:B:128:TYR:CD2	2.83	0.46
1:B:224:ALA:HB1	1:B:268:PHE:CZ	2.51	0.46
1:B:515:ASP:CG	1:B:516:PHE:H	2.19	0.46
1:B:634:TYR:OH	1:B:638:MET:HE2	2.16	0.46
1:A:170:ASN:ND2	1:A:198:ILE:HD11	2.31	0.46
1:A:373:LYS:HG2	1:A:375:ILE:HG23	1.97	0.46
1:A:692:ALA:HA	1:A:695:PHE:HD2	1.81	0.46
1:A:751:ILE:CG2	1:A:752:TYR:N	2.78	0.46
1:B:237:GLU:CG	1:B:253:ARG:HB3	2.45	0.46
1:B:279:VAL:O	1:B:280:THR:CB	2.64	0.46
1:B:326:ASP:OD1	1:B:339:CYS:HB3	2.15	0.46
1:B:463:LYS:C	1:B:465:ALA:H	2.19	0.46
1:A:461:PHE:CD2	1:A:468:TYR:HB3	2.51	0.46
1:A:640:LEU:HD12	1:A:700:TYR:CD1	2.46	0.46
1:B:237:GLU:HA	1:B:252:VAL:O	2.16	0.46

Continued on next page...

Continued from previous page...

Atom-1	Atom-2	Interatomic distance (Å)	Clash overlap (Å)
1:B:377:ASN:ND2	1:B:377:ASN:C	2.67	0.45
1:A:74:ASN:C	1:A:92:ASN:HB3	2.36	0.45
1:A:237:GLU:HA	1:A:252:VAL:O	2.16	0.45
1:A:357:PHE:O	1:A:358:ARG:HB2	2.16	0.45
1:B:707:ALA:HB3	1:B:737:ASP:O	2.16	0.45
1:B:56:LYS:HE3	1:B:499:ALA:CB	2.45	0.45
1:A:523:LYS:H	1:A:523:LYS:HD2	1.80	0.45
1:A:542:LEU:HB3	1:A:624:ILE:HG23	1.99	0.45
1:A:724:VAL:CG1	1:B:747:ALA:HA	2.46	0.45
1:B:69:LEU:CD1	1:B:107:ILE:HD12	2.45	0.45
1:B:128:TYR:N	1:B:128:TYR:HD2	2.14	0.45
1:B:258:LYS:HB3	1:B:660:GLU:O	2.16	0.45
1:B:634:TYR:O	1:B:637:SER:HB2	2.16	0.45
1:A:724:VAL:HG22	1:B:750:HIS:HD2	1.82	0.45
1:B:173:TYR:HA	1:B:183:TYR:O	2.16	0.45
1:A:82:GLU:HG3	1:A:83:TYR:N	2.31	0.45
1:A:268:PHE:CZ	1:A:303:VAL:HG21	2.52	0.45
1:A:450:ASN:C	1:A:452:GLU:H	2.20	0.45
1:A:578:PHE:CD2	1:A:609:ALA:HB2	2.51	0.45
1:A:657:SER:HB2	1:A:688:VAL:HB	1.99	0.45
1:B:657:SER:HB2	1:B:688:VAL:HB	1.98	0.45
1:A:320:GLN:OE1	1:A:669:ARG:HD3	2.16	0.45
1:A:544:LEU:HD21	1:A:606:GLN:HG3	1.98	0.45
1:B:310:ARG:NH1	1:B:389:ILE:HD13	2.21	0.45
1:A:128:TYR:N	1:A:128:TYR:HD2	2.15	0.45
1:B:119:ASN:O	1:B:121:VAL:HG23	2.17	0.45
1:A:600:THR:O	1:A:603:VAL:HG12	2.17	0.45
1:B:356:ARG:HH12	1:B:405:ILE:HA	1.82	0.45
1:B:373:LYS:HG2	1:B:375:ILE:HG23	1.99	0.45
1:B:420:ASN:ND2	1:B:426:PRO:HA	2.32	0.45
1:B:236:ILE:HG23	1:B:236:ILE:O	2.17	0.45
1:A:237:GLU:CG	1:A:253:ARG:HB3	2.46	0.44
1:B:204:GLU:HG3	1:B:210:ALA:O	2.17	0.44
1:B:206:GLU:CG	1:B:666:TYR:HB2	2.47	0.44
1:B:654:ALA:HA	1:B:704:HIS:CD2	2.52	0.44
1:B:123:GLN:HG2	1:B:124:TRP:CD2	2.51	0.44
1:B:172:ILE:O	1:B:185:ILE:HG12	2.18	0.44
1:A:98:PHE:C	1:A:100:HIS:H	2.21	0.44
1:A:258:LYS:HB3	1:A:660:GLU:O	2.18	0.44
1:A:418:ILE:HG23	1:A:430:ASN:O	2.16	0.44
1:A:435:GLN:NE2	1:A:441:LYS:HG3	2.33	0.44

Continued on next page...

Continued from previous page...

Atom-1	Atom-2	Interatomic distance (Å)	Clash overlap (Å)
1:A:708:ASP:OD1	1:A:740:HIS:HB2	2.17	0.44
1:B:91:GLU:HB3	1:B:94:THR:OG1	2.18	0.44
1:B:98:PHE:C	1:B:100:HIS:H	2.20	0.44
1:B:195:TYR:HB3	1:B:198:ILE:O	2.17	0.44
2:A:1:AZV:HBAA	2:A:1:AZV:HAE	1.71	0.44
1:B:58:TYR:HA	1:B:70:TYR:CE1	2.52	0.44
1:B:69:LEU:HD11	1:B:107:ILE:HD12	1.98	0.44
1:B:119:ASN:HD22	1:B:131:SER:CB	2.31	0.44
1:B:531:PRO:CD	1:B:574:ILE:HG12	2.45	0.44
1:B:544:LEU:HD21	1:B:606:GLN:HG3	2.00	0.44
1:B:111:GLY:O	1:B:137:LEU:HD12	2.17	0.44
1:B:216:TRP:CD2	1:B:223:LEU:HD13	2.52	0.44
2:B:1:AZV:CAC	2:B:1:AZV:HNAT	2.30	0.44
1:A:622:LYS:O	1:A:623:ARG:HG3	2.18	0.44
1:A:725:ASP:HA	1:B:746:THR:CG2	2.48	0.44
1:B:206:GLU:CD	1:B:666:TYR:HB2	2.37	0.44
1:B:357:PHE:O	1:B:358:ARG:HB2	2.17	0.44
1:B:474:GLY:HA3	1:B:557:THR:O	2.18	0.44
1:A:420:ASN:HB2	1:A:425:MET:O	2.18	0.44
1:A:454:CYS:HA	1:A:474:GLY:O	2.18	0.44
1:B:119:ASN:ND2	1:B:131:SER:HB2	2.32	0.44
1:B:169:ASN:N	1:B:169:ASN:HD22	2.16	0.44
1:B:454:CYS:HA	1:B:474:GLY:O	2.17	0.44
1:B:622:LYS:O	1:B:623:ARG:HG3	2.18	0.44
1:B:761:GLN:C	1:B:763:PHE:N	2.70	0.44
1:A:56:LYS:HE3	1:A:499:ALA:CB	2.43	0.44
1:A:581:ARG:O	1:A:594:ILE:HG23	2.17	0.44
1:A:680:LEU:CD1	1:A:684:ARG:HE	2.23	0.44
1:B:450:ASN:C	1:B:452:GLU:H	2.20	0.44
1:B:451:PRO:HA	1:B:454:CYS:O	2.18	0.44
2:B:1:AZV:OAD	2:B:1:AZV:HAHA	2.18	0.44
1:A:279:VAL:O	1:A:280:THR:CB	2.66	0.44
1:B:613:PHE:O	1:B:619:VAL:HG21	2.18	0.44
1:A:358:ARG:HG2	1:A:359:PRO:HD2	2.00	0.43
1:A:435:GLN:HB3	1:A:441:LYS:CB	2.43	0.43
1:A:562:ASN:OD1	1:A:564:ALA:HB3	2.18	0.43
1:A:60:LEU:HD12	1:A:60:LEU:C	2.37	0.43
1:A:651:ILE:HD13	1:A:755:MET:CG	2.48	0.43
1:A:764:SER:O	1:A:764:SER:OG	2.33	0.43
1:B:60:LEU:C	1:B:60:LEU:HD12	2.38	0.43
1:B:76:ILE:HG22	1:B:90:LEU:O	2.18	0.43

Continued on next page...

Continued from previous page...

Atom-1	Atom-2	Interatomic distance (Å)	Clash overlap (Å)
1:B:82:GLU:HG3	1:B:83:TYR:N	2.32	0.43
1:B:301:CYS:HB2	1:B:314:GLN:CB	2.48	0.43
1:A:58:TYR:HA	1:A:70:TYR:CE1	2.53	0.43
1:A:479:LEU:CD1	1:A:496:ASP:HA	2.47	0.43
1:A:531:PRO:CD	1:A:574:ILE:HG12	2.44	0.43
1:B:453:ARG:NH1	1:B:479:LEU:HD13	2.27	0.43
1:B:516:PHE:HD2	1:B:523:LYS:HB2	1.84	0.43
1:B:674:PRO:HB3	1:B:683:TYR:CZ	2.54	0.43
1:B:425:MET:H	1:B:425:MET:HG2	1.37	0.43
1:B:429:ARG:HG3	1:B:456:TYR:CE1	2.53	0.43
1:B:651:ILE:HD13	1:B:755:MET:CG	2.47	0.43
1:A:680:LEU:HD12	1:A:680:LEU:O	2.18	0.43
1:A:691:ARG:HH11	1:A:691:ARG:HG3	1.83	0.43
1:A:693:GLU:O	1:A:696:LYS:HG3	2.18	0.43
1:A:702:LEU:HD11	1:A:719:ILE:HB	2.01	0.43
1:B:420:ASN:HB2	1:B:425:MET:O	2.17	0.43
1:A:111:GLY:O	1:A:137:LEU:HD12	2.18	0.43
1:A:272:ASN:ND2	1:A:274:ASP:H	2.16	0.43
1:A:751:ILE:CG2	1:A:752:TYR:H	2.31	0.43
1:B:435:GLN:NE2	1:B:441:LYS:HG3	2.33	0.43
1:A:172:ILE:O	1:A:185:ILE:HG12	2.17	0.43
1:B:124:TRP:CH2	1:B:254:VAL:HG21	2.54	0.43
1:B:309:GLU:O	1:B:329:ASP:HA	2.19	0.43
1:A:155:VAL:HG22	1:A:166:TYR:HB2	2.01	0.43
1:A:411:THR:C	1:A:413:ASP:N	2.71	0.43
1:A:761:GLN:C	1:A:763:PHE:N	2.72	0.43
1:B:308:GLN:H	1:B:308:GLN:NE2	2.16	0.43
1:B:679:ASN:HD21	1:B:682:HIS:HB2	1.83	0.43
1:A:128:TYR:HD2	1:A:128:TYR:H	1.67	0.43
1:A:301:CYS:HB2	1:A:314:GLN:HB3	2.00	0.43
1:A:608:GLU:HA	1:A:611:ARG:NH1	2.34	0.43
1:B:65:ASP:CG	1:B:464:GLU:HB2	2.39	0.43
1:B:336:ARG:HB3	1:B:336:ARG:NH1	2.34	0.43
2:B:1:AZV:HAE	2:B:1:AZV:HBAA	1.77	0.43
1:A:69:LEU:CD1	1:A:107:ILE:HD12	2.48	0.42
1:A:289:ALA:CA	1:A:294:LEU:HD21	2.48	0.42
1:A:654:ALA:N	1:A:655:PRO:CD	2.81	0.42
1:A:692:ALA:HA	1:A:695:PHE:CD2	2.54	0.42
1:B:122:LYS:HG2	1:B:123:GLN:N	2.34	0.42
1:B:674:PRO:C	1:B:680:LEU:HB2	2.39	0.42
1:A:76:ILE:HG22	1:A:90:LEU:O	2.18	0.42

Continued on next page...

Continued from previous page...

Atom-1	Atom-2	Interatomic distance (Å)	Clash overlap (Å)
1:A:135:TYR:HB2	1:A:142:LEU:HD22	2.01	0.42
1:A:341:VAL:C	1:A:343:ARG:H	2.21	0.42
1:A:463:LYS:C	1:A:465:ALA:H	2.21	0.42
1:A:253:ARG:HH22	1:B:253:ARG:NH1	2.17	0.42
1:A:356:ARG:HH21	1:A:403:GLU:HB3	1.85	0.42
1:A:530:LEU:HD23	1:A:574:ILE:HG23	2.00	0.42
1:B:78:VAL:HG13	1:B:78:VAL:O	2.19	0.42
1:B:128:TYR:HD2	1:B:128:TYR:H	1.65	0.42
1:B:358:ARG:HG2	1:B:359:PRO:CD	2.49	0.42
1:B:377:ASN:HD22	1:B:380:GLY:H	1.67	0.42
1:A:143:ILE:HG22	1:A:144:THR:N	2.35	0.42
1:A:377:ASN:HD22	1:A:380:GLY:H	1.67	0.42
1:B:680:LEU:O	1:B:680:LEU:HD12	2.20	0.42
1:A:263:ASN:ND2	1:A:318:ARG:HH21	2.17	0.42
1:B:113:PHE:CZ	1:B:178:PRO:HG2	2.55	0.42
1:A:195:TYR:HB3	1:A:198:ILE:O	2.20	0.42
1:A:636:THR:O	1:A:636:THR:CG2	2.67	0.42
1:A:674:PRO:HB3	1:A:683:TYR:CZ	2.55	0.42
1:B:271:VAL:HG23	1:B:283:THR:O	2.19	0.42
1:B:608:GLU:HA	1:B:611:ARG:NH1	2.34	0.42
1:B:674:PRO:HB3	1:B:683:TYR:CE2	2.55	0.42
1:A:177:GLU:HA	1:A:178:PRO:HD3	1.93	0.42
1:A:236:ILE:HG23	1:A:236:ILE:O	2.20	0.42
1:A:356:ARG:NH2	1:A:403:GLU:HB3	2.34	0.42
1:A:429:ARG:CB	1:A:457:TYR:H	2.28	0.42
1:A:530:LEU:HA	1:A:531:PRO:HD3	1.92	0.42
1:A:580:GLY:O	1:A:582:GLY:N	2.52	0.42
1:B:217:SER:HB3	1:B:222:PHE:HB2	2.02	0.42
1:B:495:GLU:OE1	1:B:495:GLU:HA	2.20	0.42
1:B:676:PRO:HG2	1:B:677:GLU:OE2	2.20	0.42
1:B:696:LYS:HG2	1:B:728:VAL:HG22	2.01	0.42
1:A:78:VAL:HG13	1:A:78:VAL:O	2.19	0.42
1:A:154:TRP:CZ2	1:A:212:SER:HB2	2.54	0.42
1:A:696:LYS:HG2	1:A:728:VAL:HG22	2.01	0.42
1:B:402:TRP:CD2	1:B:421:GLU:HB2	2.55	0.42
1:A:246:LEU:HD22	1:A:248:TYR:O	2.20	0.42
1:A:418:ILE:HA	1:A:430:ASN:O	2.20	0.42
1:A:479:LEU:HD12	1:A:495:GLU:O	2.20	0.42
1:B:200:ASP:OD1	1:B:203:TYR:HB2	2.19	0.42
1:B:266:VAL:CG2	1:B:267:LYS:N	2.83	0.42
1:B:707:ALA:HB2	1:B:737:ASP:HA	2.02	0.42

Continued on next page...

Continued from previous page...

Atom-1	Atom-2	Interatomic distance (Å)	Clash overlap (Å)
1:A:91:GLU:HB3	1:A:94:THR:OG1	2.20	0.41
1:A:169:ASN:N	1:A:169:ASN:HD22	2.17	0.41
1:A:176:ILE:HG12	1:A:183:TYR:HE2	1.85	0.41
1:A:741:GLY:O	1:A:742:ILE:C	2.58	0.41
1:B:246:LEU:HD22	1:B:248:TYR:O	2.20	0.41
1:B:377:ASN:ND2	1:B:380:GLY:N	2.68	0.41
1:A:309:GLU:O	1:A:329:ASP:HA	2.19	0.41
1:A:624:ILE:HD12	1:A:646:VAL:O	2.20	0.41
1:B:118:TYR:O	1:B:119:ASN:HB2	2.19	0.41
1:B:227:GLN:HG2	1:B:228:PHE:N	2.35	0.41
1:B:702:LEU:HD11	1:B:719:ILE:HB	2.02	0.41
1:A:170:ASN:O	1:A:189:GLY:HA3	2.20	0.41
1:A:387:PHE:CD1	1:A:387:PHE:N	2.88	0.41
1:A:69:LEU:HD11	1:A:107:ILE:HD12	2.02	0.41
1:A:119:ASN:ND2	1:A:131:SER:HB2	2.35	0.41
1:A:258:LYS:HZ1	1:A:712:HIS:HD2	1.68	0.41
1:A:474:GLY:HA3	1:A:557:THR:O	2.20	0.41
1:A:642:SER:OG	1:A:644:SER:HB3	2.21	0.41
1:A:676:PRO:HG2	1:A:677:GLU:OE2	2.20	0.41
1:B:143:ILE:HG22	1:B:144:THR:N	2.35	0.41
1:B:194:ILE:HD13	1:B:229:ASN:HA	2.03	0.41
1:B:272:ASN:C	1:B:272:ASN:HD22	2.23	0.41
1:B:420:ASN:HD22	1:B:426:PRO:HA	1.83	0.41
1:B:707:ALA:HB3	1:B:737:ASP:C	2.40	0.41
1:A:90:LEU:HD11	1:A:137:LEU:HD22	2.02	0.41
1:A:167:VAL:HA	1:A:171:ASP:O	2.20	0.41
1:A:270:VAL:HG11	1:A:337:TRP:CZ2	2.54	0.41
1:A:377:ASN:ND2	1:A:380:GLY:N	2.69	0.41
1:B:620:ASP:OD2	1:B:623:ARG:HB2	2.20	0.41
1:B:692:ALA:HA	1:B:695:PHE:HD2	1.85	0.41
1:A:370:SER:HB3	1:A:388:GLN:NE2	2.35	0.41
1:A:563:TRP:CH2	1:A:567:LEU:HD11	2.55	0.41
1:B:411:THR:C	1:B:413:ASP:N	2.73	0.41
1:B:459:VAL:CG2	1:B:460:SER:N	2.83	0.41
1:A:118:TYR:O	1:A:119:ASN:HB2	2.21	0.41
1:A:377:ASN:ND2	1:A:377:ASN:C	2.71	0.41
1:A:689:MET:HB2	1:B:244:GLU:CD	2.41	0.41
1:B:563:TRP:CH2	1:B:567:LEU:HD11	2.55	0.41
1:B:691:ARG:HG3	1:B:691:ARG:HH11	1.85	0.41
1:A:65:ASP:CG	1:A:464:GLU:HB2	2.41	0.41
1:A:224:ALA:HB1	1:A:268:PHE:CZ	2.56	0.41

Continued on next page...

Continued from previous page...

Atom-1	Atom-2	Interatomic distance (Å)	Clash overlap (Å)
1:B:167:VAL:HA	1:B:171:ASP:O	2.21	0.41
1:B:399:LYS:C	1:B:399:LYS:HD2	2.41	0.41
1:B:718:GLN:HE21	1:B:718:GLN:CA	2.26	0.41
1:A:266:VAL:HG22	1:A:267:LYS:N	2.35	0.41
1:A:273:THR:HA	1:A:276:LEU:CG	2.50	0.41
1:A:459:VAL:CG2	1:A:460:SER:N	2.83	0.41
1:B:54:ARG:HE	1:B:54:ARG:HB2	1.72	0.41
1:B:405:ILE:HG13	1:B:429:ARG:CD	2.51	0.41
1:A:617:GLY:O	1:A:619:VAL:N	2.54	0.41
1:A:661:TYR:OH	1:A:718:GLN:HG3	2.20	0.41
1:B:263:ASN:ND2	1:B:318:ARG:HH21	2.17	0.41
1:B:414:TYR:CD2	1:B:433:LYS:HE3	2.56	0.41
1:B:422:TYR:C	1:B:424:GLY:H	2.24	0.41
1:B:642:SER:OG	1:B:644:SER:HB3	2.21	0.41
1:A:453:ARG:NH1	1:A:479:LEU:HD13	2.31	0.40
1:B:317:ARG:HD2	1:B:322:TYR:HB3	2.02	0.40
1:A:166:TYR:CZ	1:A:173:TYR:HB2	2.56	0.40
1:A:176:ILE:HG22	1:A:177:GLU:OE2	2.21	0.40
1:A:203:TYR:CD2	1:A:207:VAL:HG11	2.56	0.40
1:A:272:ASN:C	1:A:272:ASN:HD22	2.25	0.40
1:A:689:MET:HB2	1:B:244:GLU:OE2	2.21	0.40
1:B:370:SER:HB3	1:B:388:GLN:NE2	2.36	0.40
1:B:433:LYS:HG3	1:B:443:THR:HB	2.03	0.40
1:A:204:GLU:HG3	1:A:210:ALA:O	2.22	0.40
1:A:227:GLN:HG2	1:A:228:PHE:N	2.35	0.40
1:A:399:LYS:HD2	1:A:399:LYS:C	2.41	0.40
1:A:613:PHE:O	1:A:619:VAL:HG21	2.21	0.40
1:A:656:VAL:HA	1:A:715:GLN:CD	2.42	0.40
1:A:750:HIS:HD2	1:B:724:VAL:HG22	1.87	0.40
1:B:479:LEU:HD12	1:B:495:GLU:O	2.21	0.40
1:B:633:GLY:HA3	1:B:655:PRO:HB3	2.02	0.40
1:A:253:ARG:NH1	1:B:253:ARG:HH22	2.18	0.40
1:B:119:ASN:HD22	1:B:131:SER:HB2	1.86	0.40
1:B:177:GLU:HA	1:B:178:PRO:HD3	1.95	0.40
1:B:429:ARG:CB	1:B:457:TYR:H	2.31	0.40
1:B:745:SER:O	1:B:749:GLN:HG3	2.22	0.40
1:A:54:ARG:O	1:A:500:LEU:HD13	2.22	0.40
1:A:309:GLU:HB3	1:A:330:TYR:HB3	2.03	0.40
1:B:90:LEU:HD22	1:B:114:ILE:CD1	2.49	0.40
1:B:154:TRP:CZ2	1:B:212:SER:HB2	2.56	0.40

There are no symmetry-related clashes.

5.3 Torsion angles [i](#)

5.3.1 Protein backbone [i](#)

In the following table, the Percentiles column shows the percent Ramachandran outliers of the chain as a percentile score with respect to all X-ray entries followed by that with respect to entries of similar resolution.

The Analysed column shows the number of residues for which the backbone conformation was analysed, and the total number of residues.

Mol	Chain	Analysed	Favoured	Allowed	Outliers	Percentiles	
1	A	724/732 (99%)	569 (79%)	129 (18%)	26 (4%)	3	20
1	B	724/732 (99%)	571 (79%)	124 (17%)	29 (4%)	2	18
All	All	1448/1464 (99%)	1140 (79%)	253 (18%)	55 (4%)	2	19

All (55) Ramachandran outliers are listed below:

Mol	Chain	Res	Type
1	A	58	TYR
1	A	181	PRO
1	A	280	THR
1	A	384	ILE
1	A	450	ASN
1	A	581	ARG
1	B	58	TYR
1	B	181	PRO
1	B	280	THR
1	B	384	ILE
1	B	450	ASN
1	B	581	ARG
1	A	212	SER
1	A	244	GLU
1	A	289	ALA
1	A	510	PRO
1	A	548	ALA
1	A	618	PHE
1	A	623	ARG
1	B	82	GLU
1	B	212	SER
1	B	244	GLU
1	B	289	ALA
1	B	510	PRO
1	B	548	ALA

Continued on next page...

Continued from previous page...

Mol	Chain	Res	Type
1	B	618	PHE
1	B	623	ARG
1	A	81	ALA
1	A	82	GLU
1	A	200	ASP
1	A	301	CYS
1	B	81	ALA
1	B	301	CYS
1	A	320	GLN
1	A	342	ALA
1	A	358	ARG
1	A	582	GLY
1	B	193	ILE
1	B	200	ASP
1	B	320	GLN
1	B	358	ARG
1	B	582	GLY
1	B	620	ASP
1	A	74	ASN
1	A	193	ILE
1	A	744	SER
1	B	74	ASN
1	B	242	SER
1	B	342	ALA
1	B	744	SER
1	A	40	ARG
1	A	491	LEU
1	B	569	SER
1	B	189	GLY
1	B	218	PRO

5.3.2 Protein sidechains [i](#)

In the following table, the Percentiles column shows the percent sidechain outliers of the chain as a percentile score with respect to all X-ray entries followed by that with respect to entries of similar resolution.

The Analysed column shows the number of residues for which the sidechain conformation was analysed, and the total number of residues.

Mol	Chain	Analysed	Rotameric	Outliers	Percentiles
1	A	651/657 (99%)	594 (91%)	57 (9%)	8 30

Continued on next page...

Continued from previous page...

Mol	Chain	Analysed	Rotameric	Outliers	Percentiles	
1	B	651/657 (99%)	594 (91%)	57 (9%)	8	30
All	All	1302/1314 (99%)	1188 (91%)	114 (9%)	8	30

All (114) residues with a non-rotameric sidechain are listed below:

Mol	Chain	Res	Type
1	A	41	LYS
1	A	51	ASN
1	A	66	HIS
1	A	74	ASN
1	A	83	TYR
1	A	90	LEU
1	A	92	ASN
1	A	128	TYR
1	A	142	LEU
1	A	145	GLU
1	A	160	VAL
1	A	164	LEU
1	A	173	TYR
1	A	184	ARG
1	A	214	LEU
1	A	218	PRO
1	A	243	ASP
1	A	246	LEU
1	A	253	ARG
1	A	272	ASN
1	A	276	LEU
1	A	293	MET
1	A	297	ASP
1	A	332	GLU
1	A	336	ARG
1	A	350	THR
1	A	351	THR
1	A	358	ARG
1	A	361	GLU
1	A	366	LEU
1	A	370	SER
1	A	377	ASN
1	A	385	CYS
1	A	390	ASP
1	A	398	THR
1	A	399	LYS

Continued on next page...

Continued from previous page...

Mol	Chain	Res	Type
1	A	423	LYS
1	A	425	MET
1	A	448	GLU
1	A	452	GLU
1	A	487	ASN
1	A	502	LYS
1	A	506	ASN
1	A	523	LYS
1	A	536	LYS
1	A	597	ARG
1	A	608	GLU
1	A	656	VAL
1	A	658	ARG
1	A	660	GLU
1	A	697	GLN
1	A	702	LEU
1	A	710	ASN
1	A	750	HIS
1	A	755	MET
1	A	761	GLN
1	A	764	SER
1	B	41	LYS
1	B	51	ASN
1	B	66	HIS
1	B	74	ASN
1	B	90	LEU
1	B	92	ASN
1	B	126	HIS
1	B	128	TYR
1	B	142	LEU
1	B	145	GLU
1	B	160	VAL
1	B	164	LEU
1	B	173	TYR
1	B	184	ARG
1	B	214	LEU
1	B	218	PRO
1	B	230	ASP
1	B	243	ASP
1	B	246	LEU
1	B	253	ARG
1	B	272	ASN

Continued on next page...

Continued from previous page...

Mol	Chain	Res	Type
1	B	276	LEU
1	B	332	GLU
1	B	336	ARG
1	B	350	THR
1	B	351	THR
1	B	358	ARG
1	B	361	GLU
1	B	366	LEU
1	B	370	SER
1	B	377	ASN
1	B	385	CYS
1	B	390	ASP
1	B	398	THR
1	B	399	LYS
1	B	423	LYS
1	B	425	MET
1	B	448	GLU
1	B	452	GLU
1	B	487	ASN
1	B	502	LYS
1	B	506	ASN
1	B	523	LYS
1	B	536	LYS
1	B	597	ARG
1	B	608	GLU
1	B	656	VAL
1	B	658	ARG
1	B	660	GLU
1	B	679	ASN
1	B	697	GLN
1	B	702	LEU
1	B	710	ASN
1	B	750	HIS
1	B	755	MET
1	B	761	GLN
1	B	764	SER

Sometimes sidechains can be flipped to improve hydrogen bonding and reduce clashes. All (55) such sidechains are listed below:

Mol	Chain	Res	Type
1	A	51	ASN
1	A	72	GLN

Continued on next page...

Continued from previous page...

Mol	Chain	Res	Type
1	A	74	ASN
1	A	92	ASN
1	A	138	ASN
1	A	169	ASN
1	A	170	ASN
1	A	247	GLN
1	A	263	ASN
1	A	272	ASN
1	A	314	GLN
1	A	338	ASN
1	A	344	GLN
1	A	377	ASN
1	A	383	HIS
1	A	487	ASN
1	A	592	HIS
1	A	595	ASN
1	A	606	GLN
1	A	612	GLN
1	A	679	ASN
1	A	694	ASN
1	A	697	GLN
1	A	712	HIS
1	A	718	GLN
1	A	748	HIS
1	A	761	GLN
1	B	51	ASN
1	B	72	GLN
1	B	74	ASN
1	B	92	ASN
1	B	138	ASN
1	B	169	ASN
1	B	170	ASN
1	B	263	ASN
1	B	272	ASN
1	B	281	ASN
1	B	314	GLN
1	B	338	ASN
1	B	344	GLN
1	B	377	ASN
1	B	383	HIS
1	B	487	ASN
1	B	592	HIS

Continued on next page...

Continued from previous page...

Mol	Chain	Res	Type
1	B	595	ASN
1	B	606	GLN
1	B	612	GLN
1	B	679	ASN
1	B	694	ASN
1	B	697	GLN
1	B	712	HIS
1	B	718	GLN
1	B	731	GLN
1	B	748	HIS
1	B	761	GLN

5.3.3 RNA [i](#)

There are no RNA molecules in this entry.

5.4 Non-standard residues in protein, DNA, RNA chains [i](#)

There are no non-standard protein/DNA/RNA residues in this entry.

5.5 Carbohydrates [i](#)

There are no oligosaccharides in this entry.

5.6 Ligand geometry [i](#)

2 ligands are modelled in this entry.

In the following table, the Counts columns list the number of bonds (or angles) for which Mogul statistics could be retrieved, the number of bonds (or angles) that are observed in the model and the number of bonds (or angles) that are defined in the Chemical Component Dictionary. The Link column lists molecule types, if any, to which the group is linked. The Z score for a bond length (or angle) is the number of standard deviations the observed value is removed from the expected value. A bond length (or angle) with $|Z| > 2$ is considered an outlier worth inspection. RMSZ is the root-mean-square of all Z scores of the bond lengths (or angles).

Mol	Type	Chain	Res	Link	Bond lengths			Bond angles		
					Counts	RMSZ	# Z > 2	Counts	RMSZ	# Z > 2
2	AZV	A	1	-	38,40,40	1.73	2 (5%)	47,56,56	1.70	5 (10%)
2	AZV	B	1	-	38,40,40	1.76	2 (5%)	47,56,56	1.87	8 (17%)

In the following table, the Chirals column lists the number of chiral outliers, the number of chiral centers analysed, the number of these observed in the model and the number defined in the Chemical Component Dictionary. Similar counts are reported in the Torsion and Rings columns. '-' means no outliers of that kind were identified.

Mol	Type	Chain	Res	Link	Chirals	Torsions	Rings
2	AZV	A	1	-	1/1/8/10	3/33/43/43	0/3/3/3
2	AZV	B	1	-	1/1/8/10	4/33/43/43	0/3/3/3

All (4) bond length outliers are listed below:

Mol	Chain	Res	Type	Atoms	Z	Observed(Å)	Ideal(Å)
2	B	1	AZV	CAA-NAB	-9.52	1.33	1.46
2	A	1	AZV	CAA-NAB	-9.29	1.33	1.46
2	B	1	AZV	CAZ-N	-3.41	1.33	1.39
2	A	1	AZV	CAZ-N	-3.36	1.33	1.39

All (13) bond angle outliers are listed below:

Mol	Chain	Res	Type	Atoms	Z	Observed(°)	Ideal(°)
2	B	1	AZV	SBC-CAA-NAB	7.59	109.60	104.83
2	A	1	AZV	SBC-CAA-NAB	6.15	108.70	104.83
2	A	1	AZV	CAR-CAA-NAB	6.00	129.10	110.60
2	B	1	AZV	CAR-CAA-NAB	5.51	127.58	110.60
2	B	1	AZV	CBA-CBB-SBC	-4.19	98.46	106.11
2	A	1	AZV	CBA-CBB-SBC	-4.10	98.62	106.11
2	B	1	AZV	CAO-CAM-CAK	-2.79	116.70	121.24
2	B	1	AZV	CAP-CAO-CAM	2.51	121.45	117.22
2	B	1	AZV	CAH-CAI-CAP	2.51	125.82	122.45
2	B	1	AZV	CAF-CAE-CAC	2.46	116.74	112.67
2	A	1	AZV	CAF-CAE-CAC	2.33	116.52	112.67
2	A	1	AZV	CBA-NAB-CAC	-2.28	119.42	126.08
2	B	1	AZV	CBA-NAB-CAC	-2.24	119.53	126.08

All (2) chirality outliers are listed below:

Mol	Chain	Res	Type	Atom
2	A	1	AZV	CAA
2	B	1	AZV	CAA

All (7) torsion outliers are listed below:

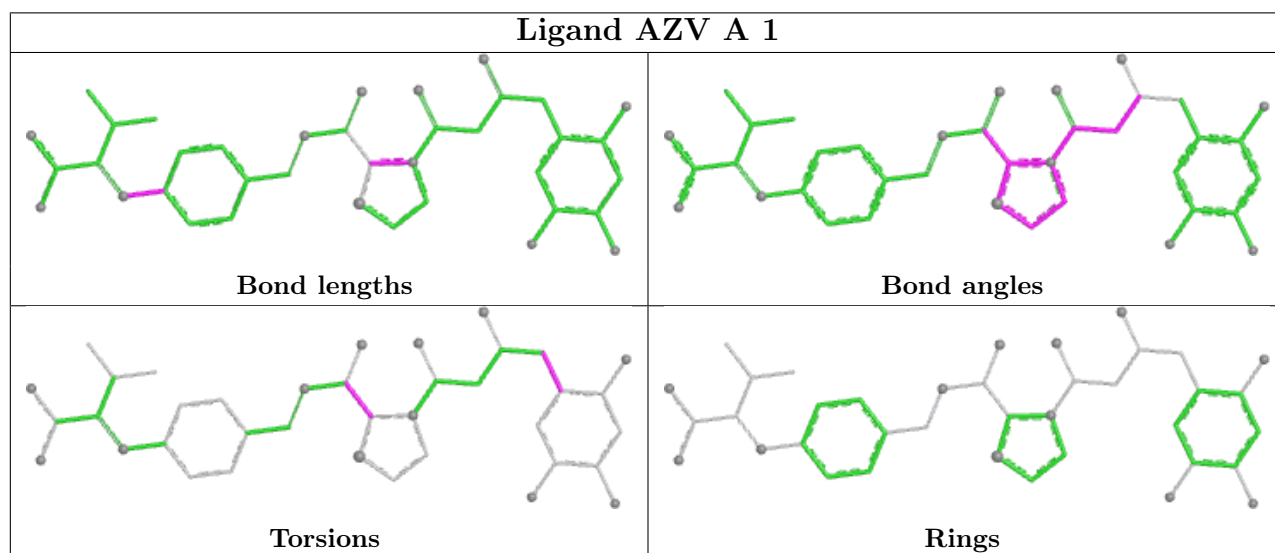
Mol	Chain	Res	Type	Atoms
2	A	1	AZV	SBC-CAA-CAR-OAS
2	A	1	AZV	SBC-CAA-CAR-NAT
2	B	1	AZV	SBC-CAA-CAR-OAS
2	B	1	AZV	SBC-CAA-CAR-NAT
2	B	1	AZV	C-CA-CB-CG1
2	B	1	AZV	C-CA-CB-CG2
2	A	1	AZV	CAF-CAH-CAI-CAJ

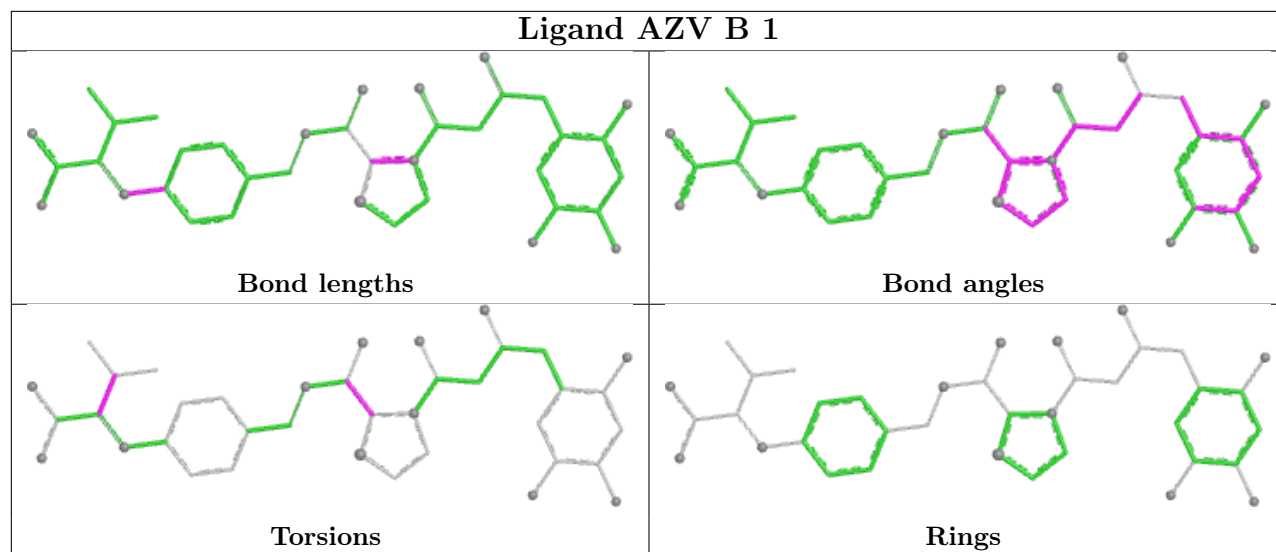
There are no ring outliers.

2 monomers are involved in 8 short contacts:

Mol	Chain	Res	Type	Clashes	Symm-Clashes
2	A	1	AZV	1	0
2	B	1	AZV	7	0

The following is a two-dimensional graphical depiction of Mogul quality analysis of bond lengths, bond angles, torsion angles, and ring geometry for all instances of the Ligand of Interest. In addition, ligands with molecular weight > 250 and outliers as shown on the validation Tables will also be included. For torsion angles, if less than 5% of the Mogul distribution of torsion angles is within 10 degrees of the torsion angle in question, then that torsion angle is considered an outlier. Any bond that is central to one or more torsion angles identified as an outlier by Mogul will be highlighted in the graph. For rings, the root-mean-square deviation (RMSD) between the ring in question and similar rings identified by Mogul is calculated over all ring torsion angles. If the average RMSD is greater than 60 degrees and the minimal RMSD between the ring in question and any Mogul-identified rings is also greater than 60 degrees, then that ring is considered an outlier. The outliers are highlighted in purple. The color gray indicates Mogul did not find sufficient equivalents in the CSD to analyse the geometry.





5.7 Other polymers [i](#)

There are no such residues in this entry.

5.8 Polymer linkage issues [i](#)

There are no chain breaks in this entry.

6 Fit of model and data [i](#)

6.1 Protein, DNA and RNA chains [i](#)

In the following table, the column labelled ‘#RSRZ > 2’ contains the number (and percentage) of RSRZ outliers, followed by percent RSRZ outliers for the chain as percentile scores relative to all X-ray entries and entries of similar resolution. The OWAB column contains the minimum, median, 95th percentile and maximum values of the occupancy-weighted average B-factor per residue. The column labelled ‘Q < 0.9’ lists the number of (and percentage) of residues with an average occupancy less than 0.9.

Mol	Chain	Analysed	<RSRZ>	#RSRZ>2	OWAB(Å ²)	Q<0.9
1	A	726/732 (99%)	0.25	8 (1%) 77 56	36, 69, 93, 108	0
1	B	726/732 (99%)	0.24	5 (0%) 84 66	35, 69, 93, 109	0
All	All	1452/1464 (99%)	0.25	13 (0%) 81 61	35, 69, 93, 109	0

All (13) RSRZ outliers are listed below:

Mol	Chain	Res	Type	RSRZ
1	B	678	ASP	2.9
1	B	548	ALA	2.4
1	B	619	VAL	2.4
1	A	210	ALA	2.4
1	A	138	ASN	2.4
1	A	84	GLY	2.4
1	A	143	ILE	2.4
1	B	486	VAL	2.2
1	A	568	ALA	2.2
1	A	242	SER	2.2
1	B	281	ASN	2.2
1	A	362	PRO	2.1
1	A	412	SER	2.1

6.2 Non-standard residues in protein, DNA, RNA chains [i](#)

There are no non-standard protein/DNA/RNA residues in this entry.

6.3 Carbohydrates [i](#)

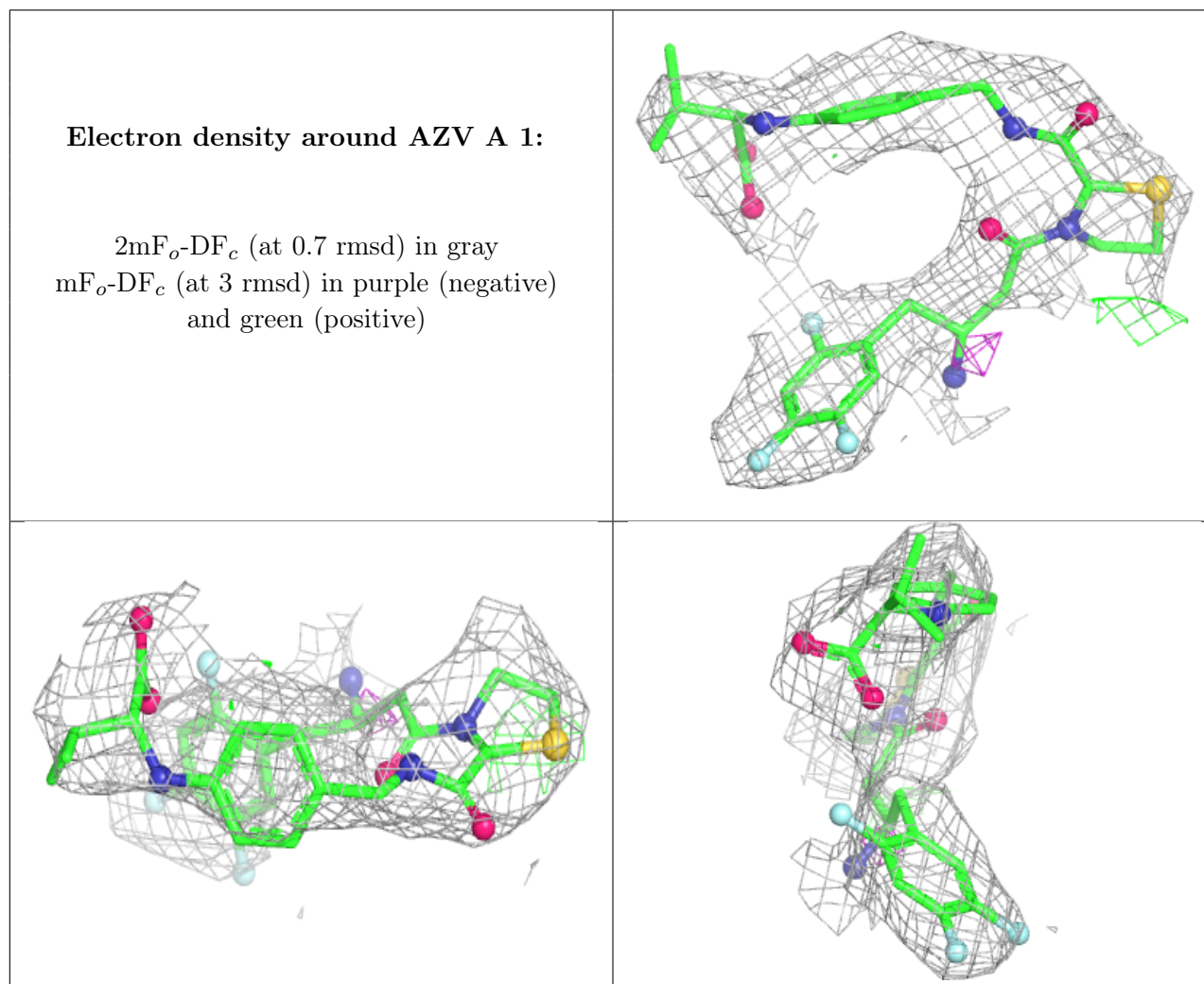
There are no monosaccharides in this entry.

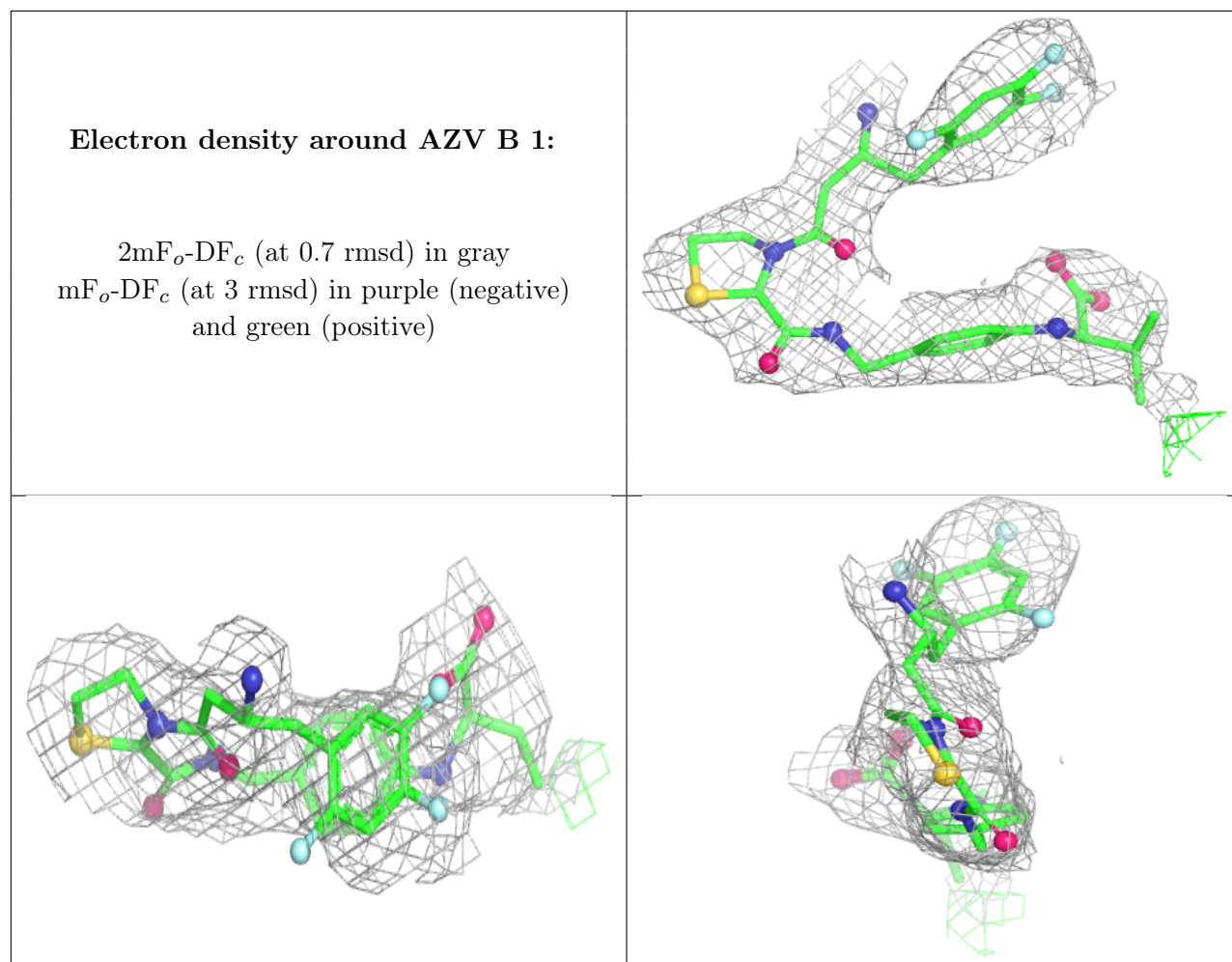
6.4 Ligands [i](#)

In the following table, the Atoms column lists the number of modelled atoms in the group and the number defined in the chemical component dictionary. The B-factors column lists the minimum, median, 95th percentile and maximum values of B factors of atoms in the group. The column labelled 'Q < 0.9' lists the number of atoms with occupancy less than 0.9.

Mol	Type	Chain	Res	Atoms	RSCC	RSR	B-factors(Å ²)	Q<0.9
2	AZV	A	1	38/38	0.84	0.16	47,66,73,74	0
2	AZV	B	1	38/38	0.87	0.14	55,62,73,74	0

The following is a graphical depiction of the model fit to experimental electron density of all instances of the Ligand of Interest. In addition, ligands with molecular weight > 250 and outliers as shown on the geometry validation Tables will also be included. Each fit is shown from different orientation to approximate a three-dimensional view.





6.5 Other polymers [i](#)

There are no such residues in this entry.