



Full wwPDB X-ray Structure Validation Report ⓘ

Nov 18, 2022 – 03:18 am GMT

PDB ID : 7Q8O
Title : Peptide LLSGKE in complex with human cathepsin V C25S mutant
Authors : Loboda, J.; Sosnowski, P.; Tusar, L.; Vidmar, R.; Vizovisek, M.; Horvat, J.;
Kosec, G.; Impens, F.; Demol, H.; Turk, B.; Gevaert, K.; Turk, D.
Deposited on : 2021-11-11
Resolution : 1.90 Å(reported)

This is a Full wwPDB X-ray Structure Validation Report for a publicly released PDB entry.

We welcome your comments at validation@mail.wwpdb.org

A user guide is available at

<https://www.wwpdb.org/validation/2017/XrayValidationReportHelp>

with specific help available everywhere you see the ⓘ symbol.

The types of validation reports are described at

<http://www.wwpdb.org/validation/2017/FAQs#types>.

The following versions of software and data (see [references ⓘ](#)) were used in the production of this report:

MolProbity : 4.02b-467
Mogul : 1.8.4, CSD as541be (2020)
Xtriage (Phenix) : 1.13
EDS : 2.31.2
Percentile statistics : 20191225.v01 (using entries in the PDB archive December 25th 2019)
Refmac : 5.8.0267
CCP4 : 7.1.010 (Gargrove)
Ideal geometry (proteins) : Engh & Huber (2001)
Ideal geometry (DNA, RNA) : Parkinson et al. (1996)
Validation Pipeline (wwPDB-VP) : 2.31.2

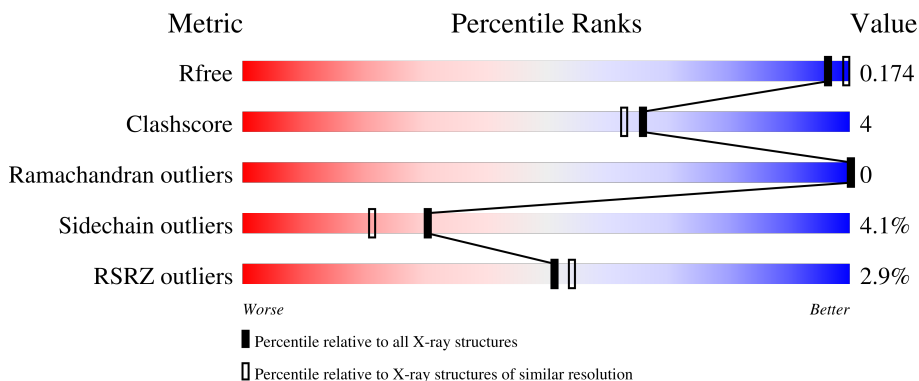
1 Overall quality at a glance

The following experimental techniques were used to determine the structure:

X-RAY DIFFRACTION

The reported resolution of this entry is 1.90 Å.

Percentile scores (ranging between 0-100) for global validation metrics of the entry are shown in the following graphic. The table shows the number of entries on which the scores are based.



Metric	Whole archive (#Entries)	Similar resolution (#Entries, resolution range(Å))
R_{free}	130704	6207 (1.90-1.90)
Clashscore	141614	6847 (1.90-1.90)
Ramachandran outliers	138981	6760 (1.90-1.90)
Sidechain outliers	138945	6760 (1.90-1.90)
RSRZ outliers	127900	6082 (1.90-1.90)

The table below summarises the geometric issues observed across the polymeric chains and their fit to the electron density. The red, orange, yellow and green segments of the lower bar indicate the fraction of residues that contain outliers for ≥ 3 , 2, 1 and 0 types of geometric quality criteria respectively. A grey segment represents the fraction of residues that are not modelled. The numeric value for each fraction is indicated below the corresponding segment, with a dot representing fractions $\leq 5\%$. The upper red bar (where present) indicates the fraction of residues that have poor fit to the electron density. The numeric value is given above the bar.

Mol	Chain	Length	Quality of chain
1	AA	221	 86% 14%
1	BA	221	 5% 90% 10%
2	PA	6	 17% 17% 17% 50%
2	PB	6	 17% 33% 50%

The following table lists non-polymeric compounds, carbohydrate monomers and non-standard

residues in protein, DNA, RNA chains that are outliers for geometric or electron-density-fit criteria:

Mol	Type	Chain	Res	Chirality	Geometry	Clashes	Electron density
3	CL	AA	301	-	-	X	-

2 Entry composition [i](#)

There are 5 unique types of molecules in this entry. The entry contains 5225 atoms, of which 1446 are hydrogens and 0 are deuteriums.

In the tables below, the ZeroOcc column contains the number of atoms modelled with zero occupancy, the AltConf column contains the number of residues with at least one atom in alternate conformation and the Trace column contains the number of residues modelled with at most 2 atoms.

- Molecule 1 is a protein called Cathepsin L2.

Mol	Chain	Residues	Atoms						ZeroOcc	AltConf	Trace
			Total	C	H	N	O	S			
1	AA	221	2078	1065	389	290	324	10	393	0	0
1	BA	221	2078	1065	389	290	324	10	392	0	0

There are 6 discrepancies between the modelled and reference sequences:

Chain	Residue	Modelled	Actual	Comment	Reference
AA	25	ALA	CYS	engineered mutation	UNP O60911
AA	108	GLN	ASN	engineered mutation	UNP O60911
AA	179	GLN	ASN	engineered mutation	UNP O60911
BA	246	ALA	CYS	engineered mutation	UNP O60911
BA	329	GLN	ASN	engineered mutation	UNP O60911
BA	400	GLN	ASN	engineered mutation	UNP O60911

- Molecule 2 is a protein called LLSGKE Peptide.

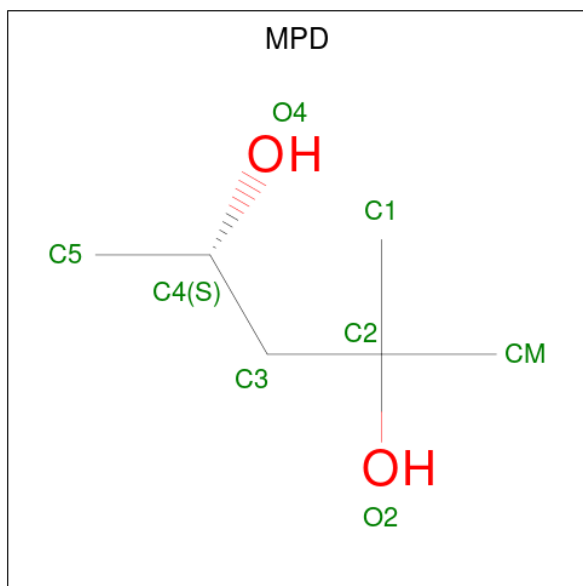
Mol	Chain	Residues	Atoms					ZeroOcc	AltConf	Trace
			Total	C	H	N	O			
2	PB	3	26	15	4	3	4	4	0	0
2	PA	3	26	15	4	3	4	4	0	0

- Molecule 3 is CHLORIDE ION (three-letter code: CL) (formula: Cl).

Mol	Chain	Residues	Atoms		ZeroOcc	AltConf
3	AA	2	Total	Cl	0	0
			2	2		
3	BA	1	Total	Cl	0	0
			1	1		

- Molecule 4 is (4S)-2-METHYL-2,4-PENTANEDIOL (three-letter code: MPD) (formula:

C₆H₁₄O₂).



Mol	Chain	Residues	Atoms	ZeroOcc	AltConf
4	AA	1	Total C O 8 6 2	0	0
4	BA	1	Total C O 8 6 2	0	0
4	BA	1	Total C O 8 6 2	0	0

- Molecule 5 is water.

Mol	Chain	Residues	Atoms	ZeroOcc	AltConf
5	AA	173	Total H O 519 346 173	346	0
5	BA	155	Total H O 465 310 155	310	0
5	PA	2	Total H O 6 4 2	4	0

3 Residue-property plots [i](#)

These plots are drawn for all protein, RNA, DNA and oligosaccharide chains in the entry. The first graphic for a chain summarises the proportions of the various outlier classes displayed in the second graphic. The second graphic shows the sequence view annotated by issues in geometry and electron density. Residues are color-coded according to the number of geometric quality criteria for which they contain at least one outlier: green = 0, yellow = 1, orange = 2 and red = 3 or more. A red dot above a residue indicates a poor fit to the electron density ($RSRZ > 2$). Stretches of 2 or more consecutive residues without any outlier are shown as a green connector. Residues present in the sample, but not in the model, are shown in grey.

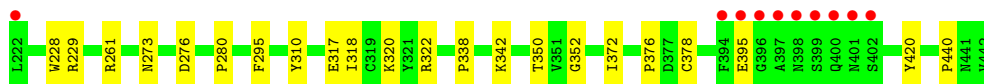
- Molecule 1: Cathepsin L2

Chain AA: 86% 14%



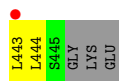
- Molecule 1: Cathepsin L2

Chain BA: 5% 90% 10%



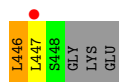
- Molecule 2: LLSGKE Peptide

Chain PB: 17% 17% 33% 50%



- Molecule 2: LLSGKE Peptide

Chain PA: 17% 17% 17% 50%



4 Data and refinement statistics

Property	Value	Source
Space group	P 43 21 2	Depositor
Cell constants a, b, c, α , β , γ	93.54Å 93.54Å 124.09Å 90.00° 90.00° 90.00°	Depositor
Resolution (Å)	46.77 – 1.90 46.77 – 1.90	Depositor EDS
% Data completeness (in resolution range)	100.0 (46.77-1.90) 100.0 (46.77-1.90)	Depositor EDS
R_{merge}	(Not available)	Depositor
R_{sym}	(Not available)	Depositor
$\langle I/\sigma(I) \rangle$ ¹	1.71 (at 1.91Å)	Xtriage
Refinement program	MAIN	Depositor
R, R_{free}	0.178 , 0.205 0.178 , 0.174	Depositor DCC
R_{free} test set	2184 reflections (4.99%)	wwPDB-VP
Wilson B-factor (Å ²)	19.0	Xtriage
Anisotropy	0.053	Xtriage
Bulk solvent k_{sol} (e/Å ³), B_{sol} (Å ²)	(Not available) , (Not available)	EDS
L-test for twinning ²	$\langle L \rangle = 0.49$, $\langle L^2 \rangle = 0.32$	Xtriage
Estimated twinning fraction	No twinning to report.	Xtriage
F_o, F_c correlation	0.95	EDS
Total number of atoms	5225	wwPDB-VP
Average B, all atoms (Å ²)	17.0	wwPDB-VP

Xtriage's analysis on translational NCS is as follows: *The largest off-origin peak in the Patterson function is 4.25% of the height of the origin peak. No significant pseudotranslation is detected.*

¹Intensities estimated from amplitudes.

²Theoretical values of $\langle |L| \rangle$, $\langle L^2 \rangle$ for acentric reflections are 0.5, 0.333 respectively for untwinned datasets, and 0.375, 0.2 for perfectly twinned datasets.

5 Model quality [i](#)

5.1 Standard geometry [i](#)

Bond lengths and bond angles in the following residue types are not validated in this section: CL, MPD

The Z score for a bond length (or angle) is the number of standard deviations the observed value is removed from the expected value. A bond length (or angle) with $|Z| > 5$ is considered an outlier worth inspection. RMSZ is the root-mean-square of all Z scores of the bond lengths (or angles).

Mol	Chain	Bond lengths		Bond angles	
		RMSZ	# Z >5	RMSZ	# Z >5
1	AA	0.73	0/1731	0.91	0/2339
1	BA	0.65	0/1731	0.87	0/2339
2	PA	0.47	0/21	0.89	0/27
2	PB	0.35	0/21	0.91	0/27
All	All	0.69	0/3504	0.89	0/4732

There are no bond length outliers.

There are no bond angle outliers.

There are no chirality outliers.

There are no planarity outliers.

5.2 Too-close contacts [i](#)

In the following table, the Non-H and H(model) columns list the number of non-hydrogen atoms and hydrogen atoms in the chain respectively. The H(added) column lists the number of hydrogen atoms added and optimized by MolProbity. The Clashes column lists the number of clashes within the asymmetric unit, whereas Symm-Clashes lists symmetry-related clashes.

Mol	Chain	Non-H	H(model)	H(added)	Clashes	Symm-Clashes
1	AA	1689	389	1622	15	0
1	BA	1689	389	1619	9	0
2	PA	22	4	26	2	0
2	PB	22	4	26	1	0
3	AA	2	0	0	2	0
3	BA	1	0	0	0	0
4	AA	8	0	14	1	0
4	BA	16	0	28	1	1
5	AA	173	346	0	0	4

Continued on next page...

Continued from previous page...

Mol	Chain	Non-H	H(model)	H(added)	Clashes	Symm-Clashes
5	BA	155	310	0	2	2
5	PA	2	4	0	0	0
All	All	3779	1446	3335	27	4

The all-atom clashscore is defined as the number of clashes found per 1000 atoms (including hydrogen atoms). The all-atom clashscore for this structure is 4.

All (27) close contacts within the same asymmetric unit are listed below, sorted by their clash magnitude.

Atom-1	Atom-2	Interatomic distance (Å)	Clash overlap (Å)
1:AA:68:GLY:O	4:AA:302:MPD:H12	1.92	0.69
1:AA:75:GLN:O	1:AA:79:GLU:HG3	1.96	0.66
1:BA:276:ASP:HB3	1:BA:317:GLU:O	2.00	0.62
1:BA:342:LYS:HD3	5:BA:630:HOH:O	2.01	0.59
1:BA:322:ARG:NH2	5:BA:604:HOH:O	2.36	0.59
4:BA:501:MPD:HM1	4:BA:501:MPD:O4	2.06	0.56
1:BA:228:TRP:CE2	1:BA:352:GLY:HA2	2.40	0.56
3:AA:301:CL:CL	2:PA:446:LEU:N	2.76	0.56
1:AA:7:TRP:CE2	1:AA:131:GLY:HA2	2.43	0.54
1:AA:8:ARG:HD3	1:AA:199:TYR:CE2	2.44	0.53
1:BA:261:ARG:NH2	1:BA:350:THR:O	2.42	0.52
1:BA:295:PHE:CZ	1:BA:440:PRO:HD3	2.45	0.52
1:AA:186:VAL:HG21	1:AA:202:ILE:HD12	1.92	0.51
1:AA:116:ALA:HB1	1:AA:119:LYS:HE3	1.94	0.50
2:PB:443:LEU:N	2:PB:443:LEU:HD12	2.31	0.45
1:BA:372:ILE:HD11	1:BA:395:GLU:HG3	1.99	0.45
1:AA:58:ARG:N	1:AA:59:PRO:CD	2.79	0.45
1:AA:173:PHE:CD2	1:AA:178:SER:HA	2.52	0.45
1:AA:164:HIS:HB2	2:PA:446:LEU:HB2	1.97	0.45
1:AA:78:LYS:HE3	1:AA:110:THR:O	2.18	0.44
1:AA:74:PHE:CZ	1:AA:219:PRO:HD3	2.53	0.43
1:AA:8:ARG:HD3	1:AA:199:TYR:CZ	2.54	0.42
1:BA:229:ARG:HD3	1:BA:420:TYR:CZ	2.55	0.42
1:BA:318:ILE:O	1:BA:320:LYS:HG3	2.19	0.42
1:AA:64:GLY:HA3	1:AA:95:ASP:OD1	2.20	0.41
1:AA:23:GLY:HA2	3:AA:301:CL:CL	2.57	0.41
1:AA:48:LEU:CD2	1:AA:106:VAL:HG23	2.52	0.40

All (4) symmetry-related close contacts are listed below. The label for Atom-2 includes the symmetry operator and encoded unit-cell translations to be applied.

Atom-1	Atom-2	Interatomic distance (Å)	Clash overlap (Å)
4:BA:503:MPD:CM	5:AA:408:HOH:O[6_455]	2.09	0.11
5:AA:555:HOH:O	5:AA:555:HOH:O[8_555]	2.09	0.11
5:AA:525:HOH:O	5:BA:700:HOH:O[3_554]	2.11	0.09
5:AA:408:HOH:O	5:BA:649:HOH:O[6_555]	2.12	0.08

5.3 Torsion angles [i](#)

5.3.1 Protein backbone [i](#)

In the following table, the Percentiles column shows the percent Ramachandran outliers of the chain as a percentile score with respect to all X-ray entries followed by that with respect to entries of similar resolution.

The Analysed column shows the number of residues for which the backbone conformation was analysed, and the total number of residues.

Mol	Chain	Analysed	Favoured	Allowed	Outliers	Percentiles	
1	AA	219/221 (99%)	211 (96%)	8 (4%)	0	100	100
1	BA	219/221 (99%)	213 (97%)	6 (3%)	0	100	100
2	PA	1/6 (17%)	1 (100%)	0	0	100	100
2	PB	1/6 (17%)	1 (100%)	0	0	100	100
All	All	440/454 (97%)	426 (97%)	14 (3%)	0	100	100

There are no Ramachandran outliers to report.

5.3.2 Protein sidechains [i](#)

In the following table, the Percentiles column shows the percent sidechain outliers of the chain as a percentile score with respect to all X-ray entries followed by that with respect to entries of similar resolution.

The Analysed column shows the number of residues for which the sidechain conformation was analysed, and the total number of residues.

Mol	Chain	Analysed	Rotameric	Outliers	Percentiles	
1	AA	178/178 (100%)	172 (97%)	6 (3%)	37	28
1	BA	178/178 (100%)	172 (97%)	6 (3%)	37	28
2	PA	3/5 (60%)	1 (33%)	2 (67%)	0	0
2	PB	3/5 (60%)	2 (67%)	1 (33%)	0	0

Continued on next page...

Continued from previous page...

Mol	Chain	Analysed	Rotameric	Outliers	Percentiles	
All	All	362/366 (99%)	347 (96%)	15 (4%)	30	21

All (15) residues with a non-rotameric sidechain are listed below:

Mol	Chain	Res	Type
1	AA	52	ASN
1	AA	89	TYR
1	AA	117	PRO
1	AA	145	GLN
1	AA	157	CYS
1	AA	196	SER
1	BA	273	ASN
1	BA	280	PRO
1	BA	310	TYR
1	BA	338	PRO
1	BA	376	PRO
1	BA	378	CYS
2	PB	444	LEU
2	PA	446	LEU
2	PA	447	LEU

Sometimes sidechains can be flipped to improve hydrogen bonding and reduce clashes. All (2) such sidechains are listed below:

Mol	Chain	Res	Type
1	AA	104	ASN
1	BA	428	ASN

5.3.3 RNA [i](#)

There are no RNA molecules in this entry.

5.4 Non-standard residues in protein, DNA, RNA chains [i](#)

There are no non-standard protein/DNA/RNA residues in this entry.

5.5 Carbohydrates [i](#)

There are no monosaccharides in this entry.

5.6 Ligand geometry

Of 6 ligands modelled in this entry, 3 are monoatomic - leaving 3 for Mogul analysis.

In the following table, the Counts columns list the number of bonds (or angles) for which Mogul statistics could be retrieved, the number of bonds (or angles) that are observed in the model and the number of bonds (or angles) that are defined in the Chemical Component Dictionary. The Link column lists molecule types, if any, to which the group is linked. The Z score for a bond length (or angle) is the number of standard deviations the observed value is removed from the expected value. A bond length (or angle) with $|Z| > 2$ is considered an outlier worth inspection. RMSZ is the root-mean-square of all Z scores of the bond lengths (or angles).

Mol	Type	Chain	Res	Link	Bond lengths			Bond angles		
					Counts	RMSZ	# Z > 2	Counts	RMSZ	# Z > 2
4	MPD	AA	302	-	7,7,7	0.35	0	9,10,10	0.36	0
4	MPD	BA	501	-	7,7,7	0.29	0	9,10,10	0.47	0
4	MPD	BA	503	-	7,7,7	0.45	0	9,10,10	0.45	0

In the following table, the Chirals column lists the number of chiral outliers, the number of chiral centers analysed, the number of these observed in the model and the number defined in the Chemical Component Dictionary. Similar counts are reported in the Torsion and Rings columns. '2' means no outliers of that kind were identified.

Mol	Type	Chain	Res	Link	Chirals	Torsions	Rings
4	MPD	AA	302	-	-	2/5/5/5	-
4	MPD	BA	501	-	-	0/5/5/5	-
4	MPD	BA	503	-	-	0/5/5/5	-

There are no bond length outliers.

There are no bond angle outliers.

There are no chirality outliers.

All (2) torsion outliers are listed below:

Mol	Chain	Res	Type	Atoms
4	AA	302	MPD	C2-C3-C4-O4
4	AA	302	MPD	C2-C3-C4-C5

There are no ring outliers.

3 monomers are involved in 3 short contacts:

Mol	Chain	Res	Type	Clashes	Symm-Clashes
4	AA	302	MPD	1	0
4	BA	501	MPD	1	0

Continued on next page...

Continued from previous page...

Mol	Chain	Res	Type	Clashes	Symm-Clashes
4	BA	503	MPD	0	1

5.7 Other polymers [i](#)

There are no such residues in this entry.

5.8 Polymer linkage issues [i](#)

There are no chain breaks in this entry.

6 Fit of model and data [i](#)

6.1 Protein, DNA and RNA chains [i](#)

In the following table, the column labelled ‘#RSRZ > 2’ contains the number (and percentage) of RSRZ outliers, followed by percent RSRZ outliers for the chain as percentile scores relative to all X-ray entries and entries of similar resolution. The OWAB column contains the minimum, median, 95th percentile and maximum values of the occupancy-weighted average B-factor per residue. The column labelled ‘Q < 0.9’ lists the number of (and percentage) of residues with an average occupancy less than 0.9.

Mol	Chain	Analysed	<RSRZ>	#RSRZ>2	OWAB(Å ²)	Q<0.9
1	AA	221/221 (100%)	-0.32	1 (0%) 91 92	10, 16, 39, 58	2 (0%)
1	BA	221/221 (100%)	-0.01	10 (4%) 33 36	10, 20, 47, 74	1 (0%)
2	PA	3/6 (50%)	1.73	1 (33%) 0 0	39, 39, 51, 51	0
2	PB	3/6 (50%)	1.41	1 (33%) 0 0	29, 29, 30, 64	0
All	All	448/454 (98%)	-0.14	13 (2%) 51 54	10, 18, 45, 74	3 (0%)

All (13) RSRZ outliers are listed below:

Mol	Chain	Res	Type	RSRZ
1	BA	396	GLY	6.0
1	BA	401	ASN	4.8
1	BA	399	SER	4.3
1	BA	397	ALA	4.0
1	BA	398	ASN	3.4
1	BA	394	PHE	3.0
1	BA	222	LEU	2.6
1	AA	116	ALA	2.5
2	PB	443	LEU	2.3
1	BA	402	SER	2.3
1	BA	400	GLN	2.2
2	PA	447	LEU	2.1
1	BA	395	GLU	2.0

6.2 Non-standard residues in protein, DNA, RNA chains [i](#)

There are no non-standard protein/DNA/RNA residues in this entry.

6.3 Carbohydrates [i](#)

There are no monosaccharides in this entry.

6.4 Ligands [i](#)

In the following table, the Atoms column lists the number of modelled atoms in the group and the number defined in the chemical component dictionary. The B-factors column lists the minimum, median, 95th percentile and maximum values of B factors of atoms in the group. The column labelled 'Q< 0.9' lists the number of atoms with occupancy less than 0.9.

Mol	Type	Chain	Res	Atoms	RSCC	RSR	B-factors(Å ²)	Q<0.9
4	MPD	AA	302	8/8	0.79	0.27	45,47,61,71	0
4	MPD	BA	503	8/8	0.87	0.16	34,39,45,46	0
4	MPD	BA	501	8/8	0.92	0.17	34,39,44,45	0
3	CL	AA	301	1/1	0.96	0.07	28,28,28,28	0
3	CL	BA	502	1/1	0.99	0.08	25,25,25,25	0
3	CL	AA	303	1/1	0.99	0.07	25,25,25,25	0

6.5 Other polymers [i](#)

There are no such residues in this entry.