



# Full wwPDB X-ray Structure Validation Report ⓘ

May 29, 2020 – 09:57 pm BST

PDB ID : 3Q96  
Title : B-Raf kinase domain in complex with a tetrahydronaphthalene inhibitor  
Authors : Sintchak, M.D.; Aertgeerts, K.; Yano, J.  
Deposited on : 2011-01-07  
Resolution : 3.10 Å(reported)

This is a Full wwPDB X-ray Structure Validation Report for a publicly released PDB entry.

We welcome your comments at [validation@mail.wwpdb.org](mailto:validation@mail.wwpdb.org)

A user guide is available at

<https://www.wwpdb.org/validation/2017/XrayValidationReportHelp>

with specific help available everywhere you see the ⓘ symbol.

---

The following versions of software and data (see [references ⓘ](#)) were used in the production of this report:

MolProbity : 4.02b-467  
Mogul : 1.8.5 (274361), CSD as541be (2020)  
Xtriage (Phenix) : 1.13  
EDS : 2.11  
buster-report : 1.1.7 (2018)  
Percentile statistics : 20191225.v01 (using entries in the PDB archive December 25th 2019)  
Refmac : 5.8.0158  
CCP4 : 7.0.044 (Gargrove)  
Ideal geometry (proteins) : Engh & Huber (2001)  
Ideal geometry (DNA, RNA) : Parkinson et al. (1996)  
Validation Pipeline (wwPDB-VP) : 2.11

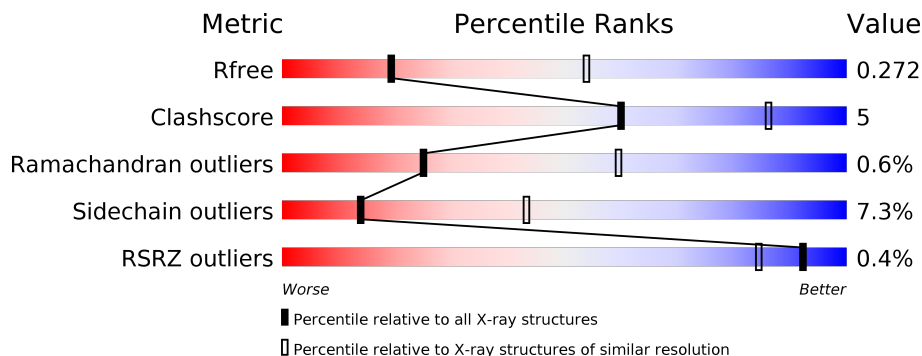
# 1 Overall quality at a glance

The following experimental techniques were used to determine the structure:

*X-RAY DIFFRACTION*

The reported resolution of this entry is 3.10 Å.

Percentile scores (ranging between 0-100) for global validation metrics of the entry are shown in the following graphic. The table shows the number of entries on which the scores are based.



Metric	Whole archive (#Entries)	Similar resolution (#Entries, resolution range(Å))
$R_{free}$	130704	1094 (3.10-3.10)
Clashscore	141614	1184 (3.10-3.10)
Ramachandran outliers	138981	1141 (3.10-3.10)
Sidechain outliers	138945	1141 (3.10-3.10)
RSRZ outliers	127900	1067 (3.10-3.10)

The table below summarises the geometric issues observed across the polymeric chains and their fit to the electron density. The red, orange, yellow and green segments on the lower bar indicate the fraction of residues that contain outliers for  $\geq 3$ , 2, 1 and 0 types of geometric quality criteria respectively. A grey segment represents the fraction of residues that are not modelled. The numeric value for each fraction is indicated below the corresponding segment, with a dot representing fractions  $\leq 5\%$ . The upper red bar (where present) indicates the fraction of residues that have poor fit to the electron density. The numeric value is given above the bar.

Mol	Chain	Length	Quality of chain
1	A	282	
1	B	282	

## 2 Entry composition [i](#)

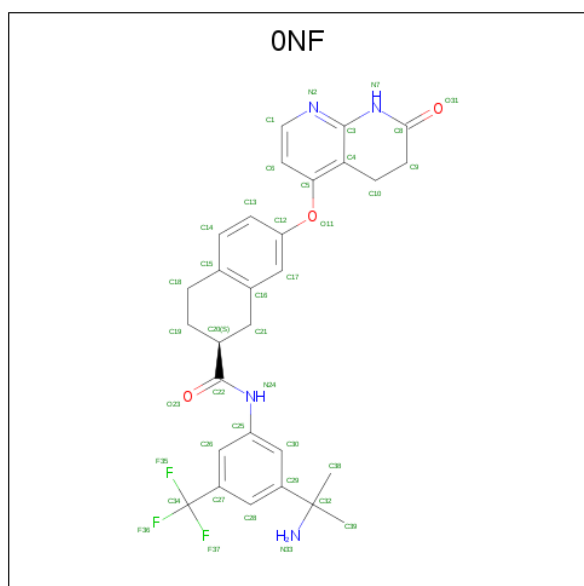
There are 2 unique types of molecules in this entry. The entry contains 4153 atoms, of which 0 are hydrogens and 0 are deuteriums.

In the tables below, the ZeroOcc column contains the number of atoms modelled with zero occupancy, the AltConf column contains the number of residues with at least one atom in alternate conformation and the Trace column contains the number of residues modelled with at most 2 atoms.

- Molecule 1 is a protein called Serine/threonine-protein kinase B-raf.

Mol	Chain	Residues	Atoms					ZeroOcc	AltConf	Trace
			Total	C	N	O	S			
1	A	253	Total 2010	1292	348	358	12	0	0	0
1	B	262	Total 2065	1328	357	368	12	0	0	0

- Molecule 2 is (2S)-N-[3-(2-aminopropan-2-yl)-5-(trifluoromethyl)phenyl]-7-[(7-oxo-5,6,7,8-tetrahydro-1,8-naphthyridin-4-yl)oxy]-1,2,3,4-tetrahydronaphthalene-2-carboxamide (three-letter code: ONF) (formula: C<sub>29</sub>H<sub>29</sub>F<sub>3</sub>N<sub>4</sub>O<sub>3</sub>).



Mol	Chain	Residues	Atoms				ZeroOcc	AltConf	
			Total	C	F	N			O
2	A	1	Total 39	29	3	4	3	0	0
2	B	1	Total 39	29	3	4	3	0	0



## 4 Data and refinement statistics

Property	Value	Source
Space group	P 41 21 2	Depositor
Cell constants a, b, c, $\alpha$ , $\beta$ , $\gamma$	94.03Å 94.03Å 165.26Å 90.00° 90.00° 90.00°	Depositor
Resolution (Å)	81.73 – 3.10 47.53 – 3.10	Depositor EDS
% Data completeness (in resolution range)	98.4 (81.73-3.10) 98.5 (47.53-3.10)	Depositor EDS
$R_{merge}$	0.21	Depositor
$R_{sym}$	(Not available)	Depositor
$\langle I/\sigma(I) \rangle$ <sup>1</sup>	3.06 (at 3.12Å)	Xtrriage
Refinement program	REFMAC 5.5.0109	Depositor
R, $R_{free}$	0.227 , 0.288 0.217 , 0.272	Depositor DCC
$R_{free}$ test set	1380 reflections (9.96%)	wwPDB-VP
Wilson B-factor (Å <sup>2</sup> )	37.4	Xtrriage
Anisotropy	0.261	Xtrriage
Bulk solvent $k_{sol}$ (e/Å <sup>3</sup> ), $B_{sol}$ (Å <sup>2</sup> )	0.30 , 1.3	EDS
L-test for twinning <sup>2</sup>	$\langle  L  \rangle = 0.49$ , $\langle L^2 \rangle = 0.32$	Xtrriage
Estimated twinning fraction	No twinning to report.	Xtrriage
$F_o, F_c$ correlation	0.90	EDS
Total number of atoms	4153	wwPDB-VP
Average B, all atoms (Å <sup>2</sup> )	30.0	wwPDB-VP

Xtrriage's analysis on translational NCS is as follows: *The analyses of the Patterson function reveals a significant off-origin peak that is 28.58 % of the origin peak, indicating pseudo-translational symmetry. The chance of finding a peak of this or larger height randomly in a structure without pseudo-translational symmetry is equal to 1.7980e-03. The detected translational NCS is most likely also responsible for the elevated intensity ratio.*

<sup>1</sup>Intensities estimated from amplitudes.

<sup>2</sup>Theoretical values of  $\langle |L| \rangle$ ,  $\langle L^2 \rangle$  for acentric reflections are 0.5, 0.333 respectively for untwinned datasets, and 0.375, 0.2 for perfectly twinned datasets.

## 5 Model quality

### 5.1 Standard geometry

Bond lengths and bond angles in the following residue types are not validated in this section: 0NF

The Z score for a bond length (or angle) is the number of standard deviations the observed value is removed from the expected value. A bond length (or angle) with  $|Z| > 5$  is considered an outlier worth inspection. RMSZ is the root-mean-square of all Z scores of the bond lengths (or angles).

Mol	Chain	Bond lengths		Bond angles	
		RMSZ	# Z  >5	RMSZ	# Z  >5
1	A	0.37	0/2053	0.52	0/2774
1	B	0.38	0/2111	0.54	0/2856
All	All	0.37	0/4164	0.53	0/5630

There are no bond length outliers.

There are no bond angle outliers.

There are no chirality outliers.

There are no planarity outliers.

### 5.2 Too-close contacts

In the following table, the Non-H and H(model) columns list the number of non-hydrogen atoms and hydrogen atoms in the chain respectively. The H(added) column lists the number of hydrogen atoms added and optimized by MolProbity. The Clashes column lists the number of clashes within the asymmetric unit, whereas Symm-Clashes lists symmetry related clashes.

Mol	Chain	Non-H	H(model)	H(added)	Clashes	Symm-Clashes
1	A	2010	0	2036	19	0
1	B	2065	0	2069	19	0
2	A	39	0	29	1	0
2	B	39	0	29	2	0
All	All	4153	0	4163	38	0

The all-atom clashscore is defined as the number of clashes found per 1000 atoms (including hydrogen atoms). The all-atom clashscore for this structure is 5.

All (38) close contacts within the same asymmetric unit are listed below, sorted by their clash magnitude.

Atom-1	Atom-2	Interatomic distance (Å)	Clash overlap (Å)
1:A:450:TRP:CH2	1:B:509:ARG:HG3	2.29	0.67
1:A:466:GLY:HA3	1:A:597:LEU:HB3	1.77	0.66
1:A:698:LYS:O	1:A:704:ARG:NH1	2.27	0.65
1:A:550:MET:SD	1:A:650:MET:CE	2.87	0.62
1:B:465:SER:HB2	1:B:470:THR:HG23	1.83	0.61
1:A:574:HIS:O	1:A:575:ARG:HB2	2.02	0.59
1:A:508:THR:O	1:B:509:ARG:NH1	2.37	0.57
2:A:1:0NF:O23	2:A:1:0NF:H26	2.05	0.56
1:B:650:MET:HA	1:B:650:MET:CE	2.37	0.55
1:B:595:PHE:O	1:B:596:GLY:C	2.45	0.55
1:B:604:TRP:HB3	1:B:662:ARG:HH11	1.72	0.54
1:A:550:MET:SD	1:A:650:MET:HE2	2.48	0.54
1:B:698:LYS:HE3	1:B:703:GLU:HB3	1.92	0.51
1:B:596:GLY:O	1:B:597:LEU:HB2	2.12	0.50
1:A:550:MET:SD	1:A:650:MET:HE1	2.52	0.49
1:B:582:ILE:HG23	1:B:590:VAL:HG13	1.95	0.48
1:A:644:ILE:O	1:A:648:GLU:HG3	2.13	0.48
1:A:485:LEU:HD23	1:A:525:LEU:HD12	1.97	0.47
1:A:688:ALA:HB3	1:A:717:LEU:HD13	1.97	0.46
1:B:533:GLU:H	1:B:585:HIS:HD2	1.63	0.46
1:A:510:HIS:HB3	1:A:513:ILE:HD13	1.97	0.45
1:B:598:ALA:HB1	2:B:1:0NF:H10A	1.99	0.45
1:B:681:VAL:HG21	1:B:690:LYS:HD2	1.97	0.45
1:A:617:ILE:HG12	1:A:666:ILE:HG12	1.99	0.44
1:B:493:GLN:HE21	1:B:493:GLN:HB2	1.64	0.44
1:B:581:ASN:HB3	1:B:593:GLY:O	2.18	0.44
1:B:489:ALA:HA	1:B:490:PRO:HD3	1.89	0.43
2:B:1:0NF:O23	2:B:1:0NF:H26	2.19	0.43
1:B:625:ILE:CG2	1:B:666:ILE:HG23	2.49	0.42
1:B:508:THR:HB	1:B:513:ILE:HG21	2.02	0.42
1:A:698:LYS:HB2	1:A:704:ARG:HG2	2.01	0.42
1:A:584:LEU:HD12	1:A:587:ASP:HA	2.02	0.42
1:B:682:ARG:O	1:B:685:CYS:HB3	2.20	0.42
1:A:617:ILE:HG12	1:A:666:ILE:CG1	2.51	0.41
1:A:639:VAL:HG13	1:A:710:ILE:HD11	2.03	0.41
1:A:646:LEU:HD23	1:A:646:LEU:HA	1.96	0.40
1:B:579:SER:OG	1:B:648:GLU:OE1	2.34	0.40
1:A:485:LEU:HG	1:A:487:VAL:HG22	2.04	0.40

There are no symmetry-related clashes.

## 5.3 Torsion angles [i](#)

### 5.3.1 Protein backbone [i](#)

In the following table, the Percentiles column shows the percent Ramachandran outliers of the chain as a percentile score with respect to all X-ray entries followed by that with respect to entries of similar resolution.

The Analysed column shows the number of residues for which the backbone conformation was analysed, and the total number of residues.

Mol	Chain	Analysed	Favoured	Allowed	Outliers	Percentiles	
1	A	247/282 (88%)	235 (95%)	11 (4%)	1 (0%)	34	69
1	B	258/282 (92%)	237 (92%)	19 (7%)	2 (1%)	19	54
All	All	505/564 (90%)	472 (94%)	30 (6%)	3 (1%)	25	59

All (3) Ramachandran outliers are listed below:

Mol	Chain	Res	Type
1	B	596	GLY
1	A	721	LEU
1	B	597	LEU

### 5.3.2 Protein sidechains [i](#)

In the following table, the Percentiles column shows the percent sidechain outliers of the chain as a percentile score with respect to all X-ray entries followed by that with respect to entries of similar resolution.

The Analysed column shows the number of residues for which the sidechain conformation was analysed, and the total number of residues.

Mol	Chain	Analysed	Rotameric	Outliers	Percentiles	
1	A	219/249 (88%)	206 (94%)	13 (6%)	19	50
1	B	221/249 (89%)	202 (91%)	19 (9%)	10	37
All	All	440/498 (88%)	408 (93%)	32 (7%)	14	43

All (32) residues with a non-rotameric sidechain are listed below:

Mol	Chain	Res	Type
1	A	457	ILE
1	A	486	ASN
1	A	506	ARG

*Continued on next page...*



*Continued from previous page...*

<b>Mol</b>	<b>Chain</b>	<b>Res</b>	<b>Type</b>
1	A	511	VAL
1	A	535	SER
1	A	545	GLU
1	A	551	ILE
1	A	584	LEU
1	A	597	LEU
1	A	616	SER
1	A	617	ILE
1	A	656	TYR
1	A	674	LEU
1	B	451	GLU
1	B	468	PHE
1	B	491	THR
1	B	493	GLN
1	B	496	GLN
1	B	546	THR
1	B	547	LYS
1	B	551	ILE
1	B	588	LEU
1	B	602	SER
1	B	650	MET
1	B	656	TYR
1	B	657	SER
1	B	674	LEU
1	B	682	ARG
1	B	683	SER
1	B	687	LYS
1	B	700	LYS
1	B	717	LEU

Some sidechains can be flipped to improve hydrogen bonding and reduce clashes. All (6) such sidechains are listed below:

<b>Mol</b>	<b>Chain</b>	<b>Res</b>	<b>Type</b>
1	A	580	ASN
1	A	585	HIS
1	B	486	ASN
1	B	493	GLN
1	B	562	GLN
1	B	585	HIS

### 5.3.3 RNA [i](#)

There are no RNA molecules in this entry.

## 5.4 Non-standard residues in protein, DNA, RNA chains [i](#)

There are no non-standard protein/DNA/RNA residues in this entry.

## 5.5 Carbohydrates [i](#)

There are no carbohydrates in this entry.

## 5.6 Ligand geometry [i](#)

2 ligands are modelled in this entry.

In the following table, the Counts columns list the number of bonds (or angles) for which Mogul statistics could be retrieved, the number of bonds (or angles) that are observed in the model and the number of bonds (or angles) that are defined in the Chemical Component Dictionary. The Link column lists molecule types, if any, to which the group is linked. The Z score for a bond length (or angle) is the number of standard deviations the observed value is removed from the expected value. A bond length (or angle) with  $|Z| > 2$  is considered an outlier worth inspection. RMSZ is the root-mean-square of all Z scores of the bond lengths (or angles).

Mol	Type	Chain	Res	Link	Bond lengths			Bond angles		
					Counts	RMSZ	# Z  > 2	Counts	RMSZ	# Z  > 2
2	0NF	A	1	-	42,43,43	1.33	2 (4%)	59,65,65	1.48	7 (11%)
2	0NF	B	1	-	42,43,43	1.33	3 (7%)	59,65,65	1.34	5 (8%)

In the following table, the Chirals column lists the number of chiral outliers, the number of chiral centers analysed, the number of these observed in the model and the number defined in the Chemical Component Dictionary. Similar counts are reported in the Torsion and Rings columns. '-' means no outliers of that kind were identified.

Mol	Type	Chain	Res	Link	Chirals	Torsions	Rings
2	0NF	A	1	-	-	0/24/42/42	0/5/5/5
2	0NF	B	1	-	-	0/24/42/42	0/5/5/5

All (5) bond length outliers are listed below:

Mol	Chain	Res	Type	Atoms	Z	Observed(Å)	Ideal(Å)
2	A	1	0NF	C8-N7	5.74	1.41	1.35

*Continued on next page...*

*Continued from previous page...*

Mol	Chain	Res	Type	Atoms	Z	Observed(Å)	Ideal(Å)
2	B	1	0NF	C8-N7	5.31	1.41	1.35
2	A	1	0NF	C25-N24	-3.60	1.34	1.41
2	B	1	0NF	C25-N24	-3.13	1.35	1.41
2	B	1	0NF	C3-N7	2.31	1.40	1.38

All (12) bond angle outliers are listed below:

Mol	Chain	Res	Type	Atoms	Z	Observed(°)	Ideal(°)
2	A	1	0NF	C9-C8-N7	6.90	121.38	116.24
2	B	1	0NF	C9-C8-N7	5.02	119.98	116.24
2	B	1	0NF	C3-N7-C8	-3.59	120.77	124.24
2	A	1	0NF	C6-C1-N2	-3.11	120.10	123.96
2	B	1	0NF	C6-C1-N2	-3.11	120.10	123.96
2	A	1	0NF	C3-N7-C8	-3.01	121.33	124.24
2	A	1	0NF	C1-N2-C3	2.64	122.01	116.77
2	B	1	0NF	F37-C34-C27	-2.58	107.26	112.93
2	B	1	0NF	C1-N2-C3	2.40	121.53	116.77
2	A	1	0NF	O31-C8-N7	-2.40	119.31	121.43
2	A	1	0NF	F35-C34-C27	-2.19	108.11	112.93
2	A	1	0NF	C5-O11-C12	2.12	123.30	118.00

There are no chirality outliers.

There are no torsion outliers.

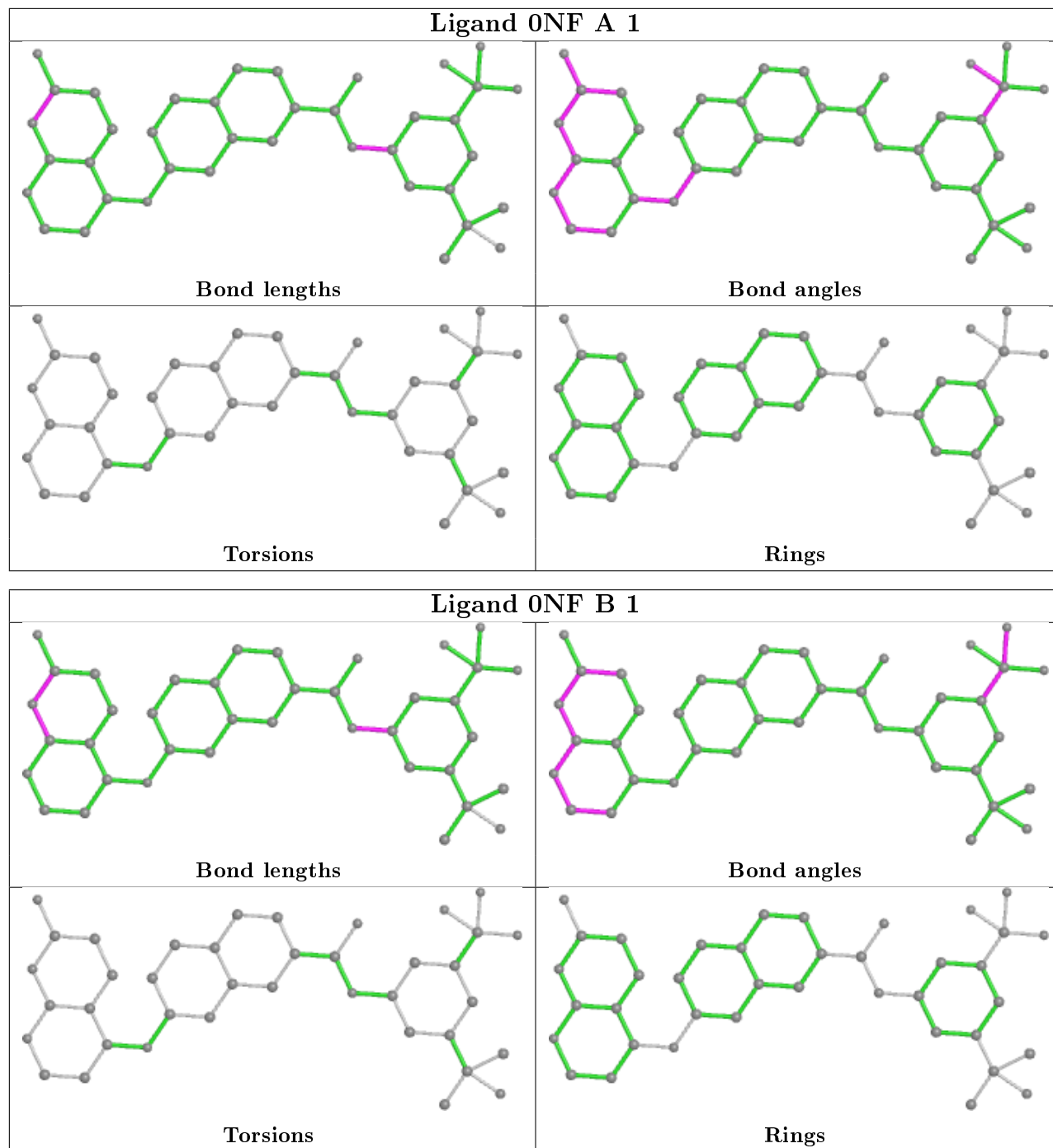
There are no ring outliers.

2 monomers are involved in 3 short contacts:

Mol	Chain	Res	Type	Clashes	Symm-Clashes
2	A	1	0NF	1	0
2	B	1	0NF	2	0

The following is a two-dimensional graphical depiction of Mogul quality analysis of bond lengths, bond angles, torsion angles, and ring geometry for all instances of the Ligand of Interest. In addition, ligands with molecular weight > 250 and outliers as shown on the validation Tables will also be included. For torsion angles, if less than 5% of the Mogul distribution of torsion angles is within 10 degrees of the torsion angle in question, then that torsion angle is considered an outlier. Any bond that is central to one or more torsion angles identified as an outlier by Mogul will be highlighted in the graph. For rings, the root-mean-square deviation (RMSD) between the ring in question and similar rings identified by Mogul is calculated over all ring torsion angles. If the average RMSD is greater than 60 degrees and the minimal RMSD between the ring in question and any Mogul-identified rings is also greater than 60 degrees, then that ring is considered an outlier. The outliers are highlighted in purple. The color gray indicates Mogul did not find sufficient

equivalents in the CSD to analyse the geometry.



## 5.7 Other polymers [\(i\)](#)

There are no such residues in this entry.

## 5.8 Polymer linkage issues

There are no chain breaks in this entry.

## 6 Fit of model and data [i](#)

### 6.1 Protein, DNA and RNA chains [i](#)

In the following table, the column labelled '#RSRZ > 2' contains the number (and percentage) of RSRZ outliers, followed by percent RSRZ outliers for the chain as percentile scores relative to all X-ray entries and entries of similar resolution. The OWAB column contains the minimum, median, 95<sup>th</sup> percentile and maximum values of the occupancy-weighted average B-factor per residue. The column labelled 'Q < 0.9' lists the number of (and percentage) of residues with an average occupancy less than 0.9.

Mol	Chain	Analysed	<RSRZ>	#RSRZ>2	OWAB(Å <sup>2</sup> )	Q<0.9
1	A	253/282 (89%)	-0.31	1 (0%) 92 84	16, 27, 47, 57	0
1	B	262/282 (92%)	-0.27	1 (0%) 92 84	18, 30, 51, 59	0
All	All	515/564 (91%)	-0.29	2 (0%) 92 84	16, 28, 50, 59	0

All (2) RSRZ outliers are listed below:

Mol	Chain	Res	Type	RSRZ
1	A	722	PRO	3.1
1	B	602	SER	2.3

### 6.2 Non-standard residues in protein, DNA, RNA chains [i](#)

There are no non-standard protein/DNA/RNA residues in this entry.

### 6.3 Carbohydrates [i](#)

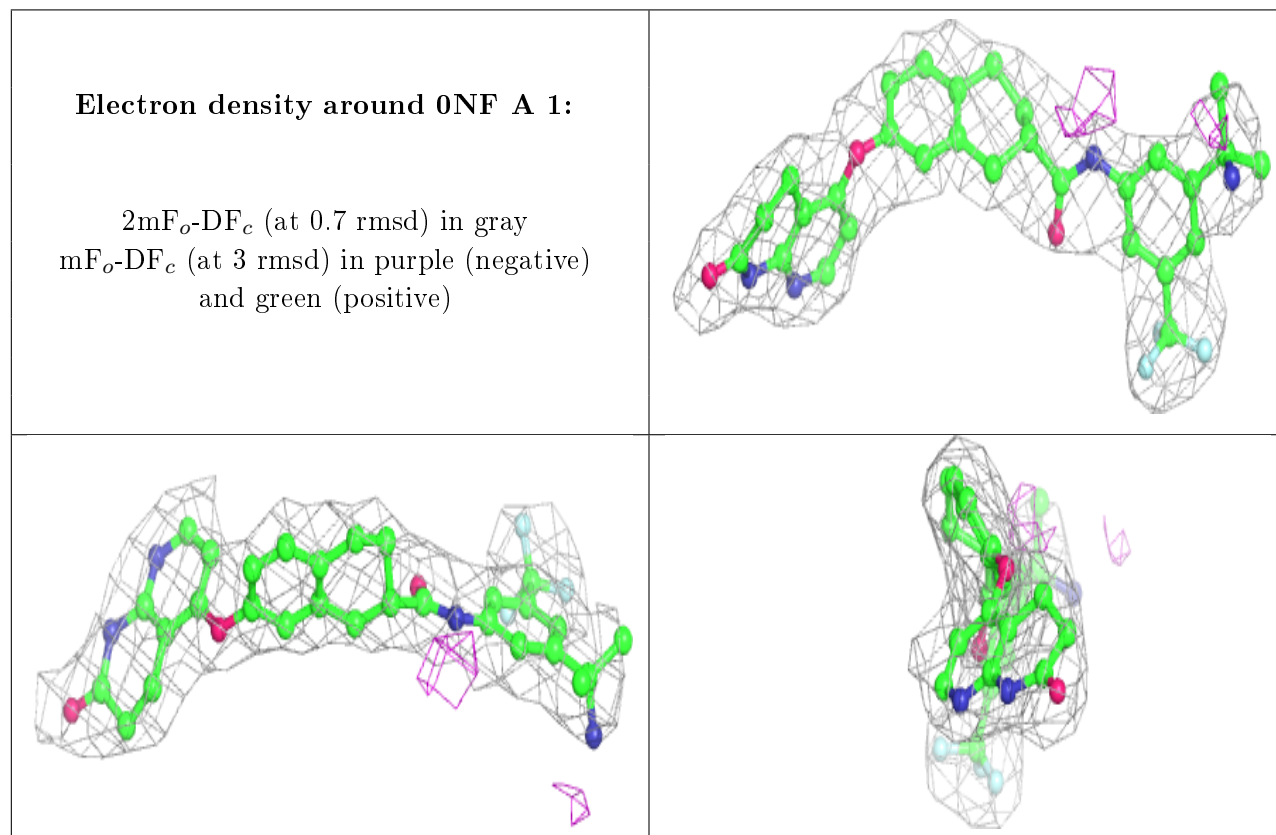
There are no carbohydrates in this entry.

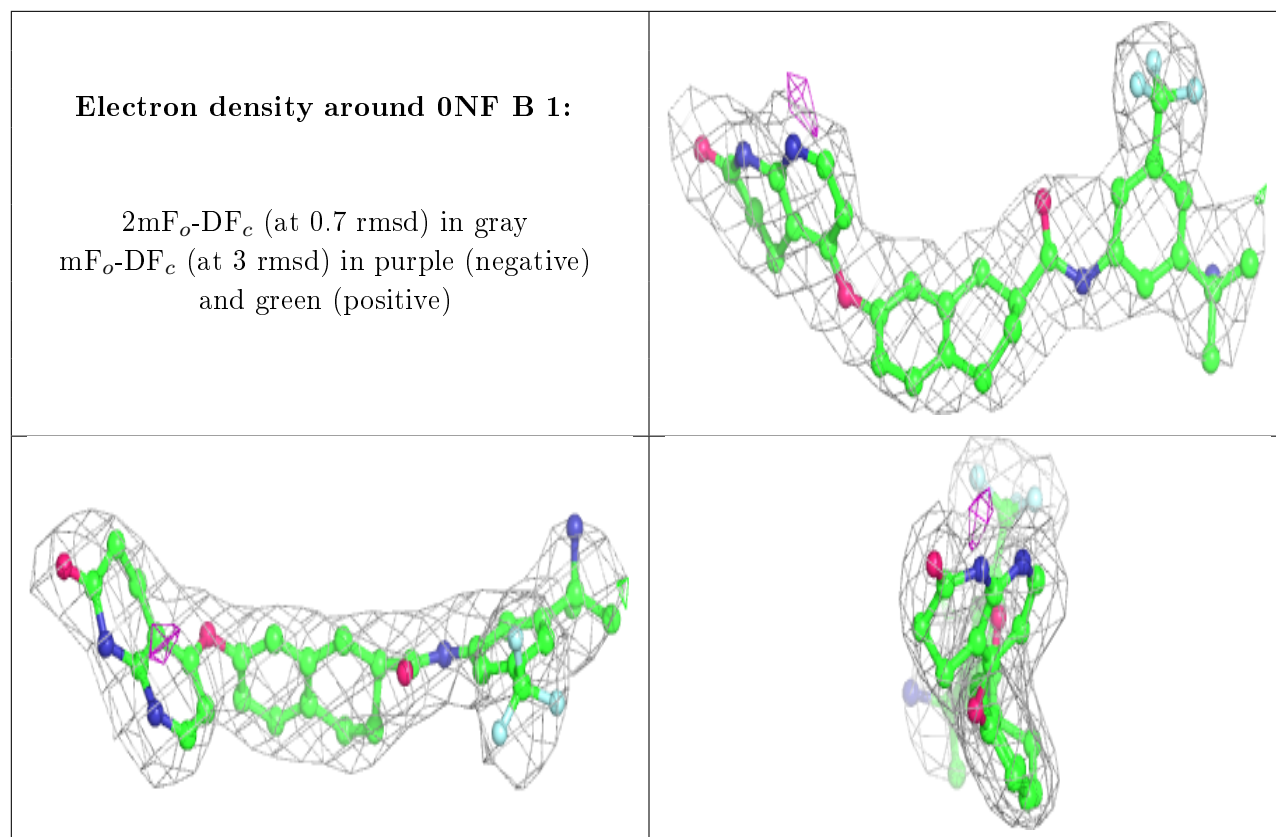
### 6.4 Ligands [i](#)

In the following table, the Atoms column lists the number of modelled atoms in the group and the number defined in the chemical component dictionary. The B-factors column lists the minimum, median, 95<sup>th</sup> percentile and maximum values of B factors of atoms in the group. The column labelled 'Q < 0.9' lists the number of atoms with occupancy less than 0.9.

Mol	Type	Chain	Res	Atoms	RSCC	RSR	B-factors(Å <sup>2</sup> )	Q<0.9
2	0NF	A	1	39/39	0.95	0.20	16,22,31,32	0
2	0NF	B	1	39/39	0.96	0.21	18,23,29,29	0

The following is a graphical depiction of the model fit to experimental electron density of all instances of the Ligand of Interest. In addition, ligands with molecular weight > 250 and outliers as shown on the geometry validation Tables will also be included. Each fit is shown from different orientation to approximate a three-dimensional view.





## 6.5 Other polymers [i](#)

There are no such residues in this entry.