



Full wwPDB X-ray Structure Validation Report ⓘ

Mar 13, 2018 – 09:11 pm GMT

PDB ID : 2QAB
Title : Crystal Structure of Estrogen Receptor Alpha Ligand Binding Domain Mutant 537S Complexed with an Ethyl Indazole Compound
Authors : Nettles, K.W.; Bruning, J.B.; Nowak, J.; Sharma, S.K.; Hahm, J.B.; Shi, Y.; Kulp, K.; Hochberg, R.B.; Zhou, H.; Katzenellenbogen, J.A.; Katzenellenbogen, B.S.; Kim, Y.; Joachmiak, A.; Greene, G.L.
Deposited on : 2007-06-14
Resolution : 1.89 Å (reported)

This is a Full wwPDB X-ray Structure Validation Report for a publicly released PDB entry.

We welcome your comments at validation@mail.wwpdb.org

A user guide is available at

<https://www.wwpdb.org/validation/2017/XrayValidationReportHelp>

with specific help available everywhere you see the ⓘ symbol.

The following versions of software and data (see [references ⓘ](#)) were used in the production of this report:

MolProbity : 4.02b-467
Mogul : 1.7.3 (157068), CSD as539be (2018)
Xtriage (Phenix) : 1.13
EDS : trunk31020
Percentile statistics : 20171227.v01 (using entries in the PDB archive December 27th 2017)
Refmac : 5.8.0158
CCP4 : 7.0 (Gargrove)
Ideal geometry (proteins) : Engh & Huber (2001)
Ideal geometry (DNA, RNA) : Parkinson et al. (1996)
Validation Pipeline (wwPDB-VP) : trunk31020

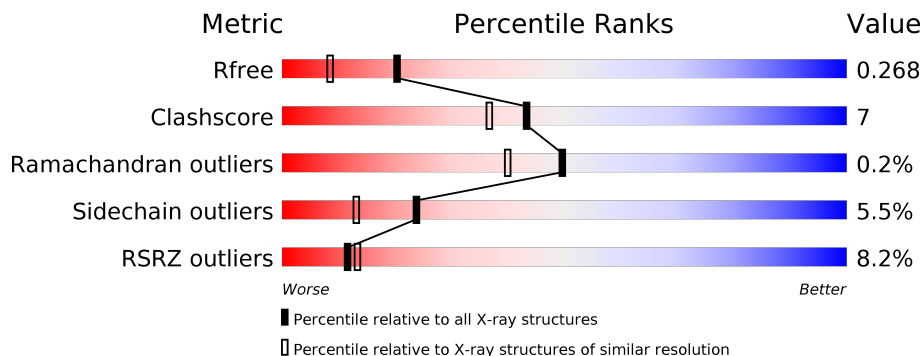
1 Overall quality at a glance i

The following experimental techniques were used to determine the structure:

X-RAY DIFFRACTION

The reported resolution of this entry is 1.89 Å.

Percentile scores (ranging between 0-100) for global validation metrics of the entry are shown in the following graphic. The table shows the number of entries on which the scores are based.



Metric	Whole archive (#Entries)	Similar resolution (#Entries, resolution range(Å))
R_{free}	111664	5502 (1.90-1.90)
Clashscore	122126	6115 (1.90-1.90)
Ramachandran outliers	120053	6048 (1.90-1.90)
Sidechain outliers	120020	6048 (1.90-1.90)
RSRZ outliers	108989	5379 (1.90-1.90)

The table below summarises the geometric issues observed across the polymeric chains and their fit to the electron density. The red, orange, yellow and green segments on the lower bar indicate the fraction of residues that contain outliers for ≥ 3 , 2, 1 and 0 types of geometric quality criteria. A grey segment represents the fraction of residues that are not modelled. The numeric value for each fraction is indicated below the corresponding segment, with a dot representing fractions $\leq 5\%$. The upper red bar (where present) indicates the fraction of residues that have poor fit to the electron density. The numeric value is given above the bar.

Mol	Chain	Length	Quality of chain
1	A	258	<div style="display: flex; align-items: center;"> <div style="width: 7%; height: 10px; background-color: red; margin-right: 5px;"></div> <div style="width: 76%; height: 10px; background-color: green; margin-right: 5px;"></div> <div style="width: 13%; height: 10px; background-color: yellow; margin-right: 5px;"></div> <div style="width: 9%; height: 10px; background-color: orange; margin-right: 5px;"></div> <div style="width: 15%; height: 10px; background-color: grey;"></div> </div> <p style="font-size: small; margin-top: 5px;">7% 76% 13% • 9%</p>
1	B	258	<div style="display: flex; align-items: center;"> <div style="width: 8%; height: 10px; background-color: red; margin-right: 5px;"></div> <div style="width: 79%; height: 10px; background-color: green; margin-right: 5px;"></div> <div style="width: 14%; height: 10px; background-color: yellow; margin-right: 5px;"></div> <div style="width: 5%; height: 10px; background-color: orange; margin-right: 5px;"></div> <div style="width: 14%; height: 10px; background-color: grey;"></div> </div> <p style="font-size: small; margin-top: 5px;">8% 79% 14% • 5%</p>
2	C	13	<div style="display: flex; align-items: center;"> <div style="width: 23%; height: 10px; background-color: red; margin-right: 5px;"></div> <div style="width: 38%; height: 10px; background-color: green; margin-right: 5px;"></div> <div style="width: 46%; height: 10px; background-color: yellow; margin-right: 5px;"></div> <div style="width: 15%; height: 10px; background-color: grey;"></div> </div> <p style="font-size: small; margin-top: 5px;">23% 38% 46% 15%</p>
2	D	13	<div style="display: flex; align-items: center;"> <div style="width: 8%; height: 10px; background-color: red; margin-right: 5px;"></div> <div style="width: 54%; height: 10px; background-color: green; margin-right: 5px;"></div> <div style="width: 8%; height: 10px; background-color: yellow; margin-right: 5px;"></div> <div style="width: 8%; height: 10px; background-color: orange; margin-right: 5px;"></div> <div style="width: 31%; height: 10px; background-color: grey;"></div> </div> <p style="font-size: small; margin-top: 5px;">8% 54% 8% 8% 31%</p>

2 Entry composition

There are 4 unique types of molecules in this entry. The entry contains 4099 atoms, of which 0 are hydrogens and 0 are deuteriums.

In the tables below, the ZeroOcc column contains the number of atoms modelled with zero occupancy, the AltConf column contains the number of residues with at least one atom in alternate conformation and the Trace column contains the number of residues modelled with at most 2 atoms.

- Molecule 1 is a protein called Estrogen receptor.

Mol	Chain	Residues	Atoms					ZeroOcc	AltConf	Trace
			Total	C	N	O	S			
1	A	236	1908	1220	329	339	20	0	6	0
1	B	245	1964	1257	337	351	19	0	5	0

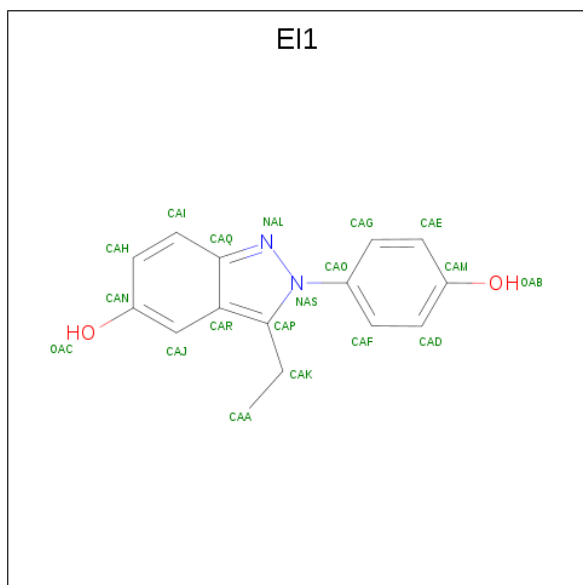
There are 4 discrepancies between the modelled and reference sequences:

Chain	Residue	Modelled	Actual	Comment	Reference
A	297	SER	-	EXPRESSION TAG	UNP P03372
A	537	SER	TYR	ENGINEERED	UNP P03372
B	297	SER	-	EXPRESSION TAG	UNP P03372
B	537	SER	TYR	ENGINEERED	UNP P03372

- Molecule 2 is a protein called nuclear receptor coactivator 2.

Mol	Chain	Residues	Atoms				ZeroOcc	AltConf	Trace
			Total	C	N	O			
2	C	11	94	60	20	14	0	0	0
2	D	9	79	51	16	12	0	0	0

- Molecule 3 is 3-ETHYL-2-(4-HYDROXYPHENYL)-2H-INDAZOL-5-OL (three-letter code: EI1) (formula: C₁₅H₁₄N₂O₂).



Mol	Chain	Residues	Atoms			ZeroOcc	AltConf	
3	A	1	Total	C	N	O	0	0
			19	15	2	2		
3	B	1	Total	C	N	O	0	0
			19	15	2	2		

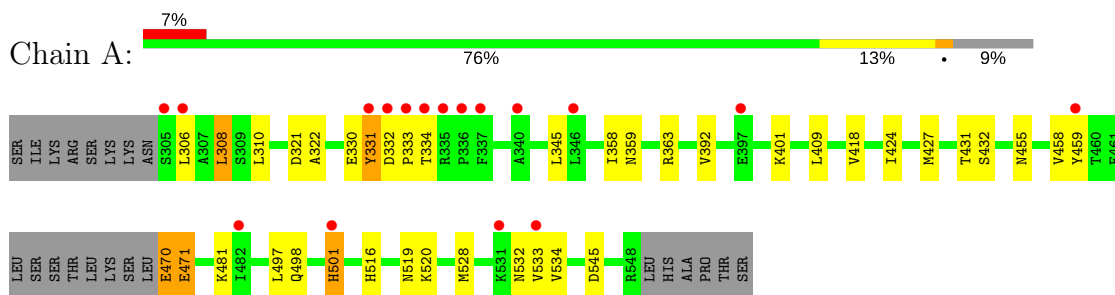
- Molecule 4 is water.

Mol	Chain	Residues	Atoms		ZeroOcc	AltConf
4	A	13	Total	O	0	0
			13	13		
4	B	3	Total	O	0	0
			3	3		

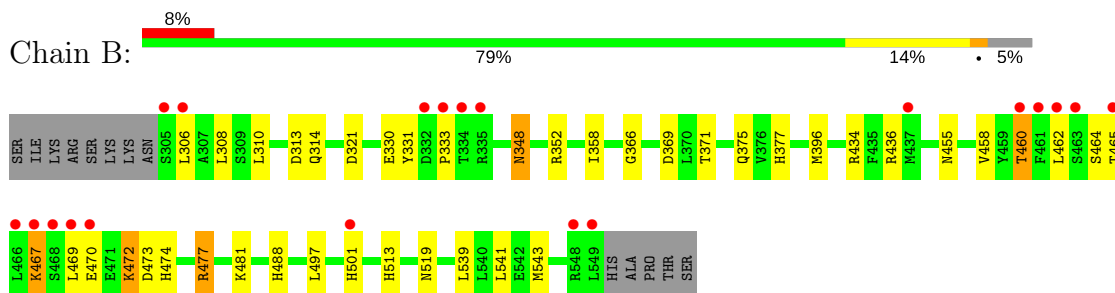
3 Residue-property plots [i](#)

These plots are drawn for all protein, RNA and DNA chains in the entry. The first graphic for a chain summarises the proportions of the various outlier classes displayed in the second graphic. The second graphic shows the sequence view annotated by issues in geometry and electron density. Residues are color-coded according to the number of geometric quality criteria for which they contain at least one outlier: green = 0, yellow = 1, orange = 2 and red = 3 or more. A red dot above a residue indicates a poor fit to the electron density ($RSRZ > 2$). Stretches of 2 or more consecutive residues without any outlier are shown as a green connector. Residues present in the sample, but not in the model, are shown in grey.

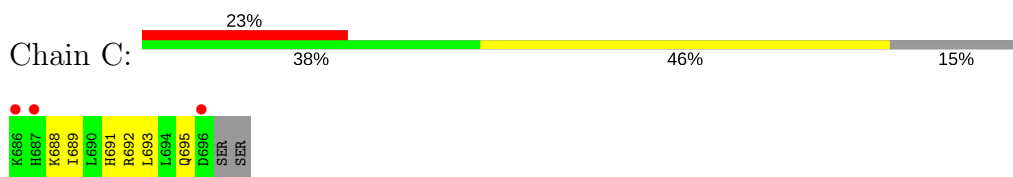
- Molecule 1: Estrogen receptor



- Molecule 1: Estrogen receptor



- Molecule 2: nuclear receptor coactivator 2



- Molecule 2: nuclear receptor coactivator 2



4 Data and refinement statistics i

Property	Value	Source
Space group	P 1 21 1	Depositor
Cell constants a, b, c, α , β , γ	55.82Å 83.08Å 58.30Å 90.00° 109.13° 90.00°	Depositor
Resolution (Å)	19.54 – 1.89 19.54 – 1.89	Depositor EDS
% Data completeness (in resolution range)	98.6 (19.54-1.89) 98.6 (19.54-1.89)	Depositor EDS
R_{merge}	0.10	Depositor
R_{sym}	0.10	Depositor
$\langle I/\sigma(I) \rangle$ ¹	2.27 (at 1.89Å)	Xtrriage
Refinement program	REFMAC 5.2.0005	Depositor
R, R_{free}	0.224 , 0.270 0.224 , 0.268	Depositor DCC
R_{free} test set	2012 reflections (5.07%)	wwPDB-VP
Wilson B-factor (Å ²)	31.7	Xtrriage
Anisotropy	0.089	Xtrriage
Bulk solvent k_{sol} (e/Å ³), B_{sol} (Å ²)	0.37 , 59.2	EDS
L-test for twinning ²	$\langle L \rangle = 0.48$, $\langle L^2 \rangle = 0.31$	Xtrriage
Estimated twinning fraction	0.027 for l,-k,h	Xtrriage
F_o, F_c correlation	0.94	EDS
Total number of atoms	4099	wwPDB-VP
Average B, all atoms (Å ²)	32.0	wwPDB-VP

Xtrriage's analysis on translational NCS is as follows: *The largest off-origin peak in the Patterson function is 6.23% of the height of the origin peak. No significant pseudotranslation is detected.*

¹Intensities estimated from amplitudes.

²Theoretical values of $\langle |L| \rangle$, $\langle L^2 \rangle$ for acentric reflections are 0.5, 0.333 respectively for untwinned datasets, and 0.375, 0.2 for perfectly twinned datasets.

5 Model quality [i](#)

5.1 Standard geometry [i](#)

Bond lengths and bond angles in the following residue types are not validated in this section: EI1

The Z score for a bond length (or angle) is the number of standard deviations the observed value is removed from the expected value. A bond length (or angle) with $|Z| > 5$ is considered an outlier worth inspection. RMSZ is the root-mean-square of all Z scores of the bond lengths (or angles).

Mol	Chain	Bond lengths		Bond angles	
		RMSZ	# Z >5	RMSZ	# Z >5
1	A	0.38	0/1970	0.54	0/2661
1	B	0.45	1/2014 (0.0%)	0.52	0/2722
2	C	0.73	0/95	0.59	0/126
2	D	0.36	0/79	0.55	0/104
All	All	0.43	1/4158 (0.0%)	0.53	0/5613

All (1) bond length outliers are listed below:

Mol	Chain	Res	Type	Atoms	Z	Observed(Å)	Ideal(Å)
1	B	467	LYS	CE-NZ	9.80	1.73	1.49

There are no bond angle outliers.

There are no chirality outliers.

There are no planarity outliers.

5.2 Too-close contacts [i](#)

In the following table, the Non-H and H(model) columns list the number of non-hydrogen atoms and hydrogen atoms in the chain respectively. The H(added) column lists the number of hydrogen atoms added and optimized by MolProbity. The Clashes column lists the number of clashes within the asymmetric unit, whereas Symm-Clashes lists symmetry related clashes.

Mol	Chain	Non-H	H(model)	H(added)	Clashes	Symm-Clashes
1	A	1908	0	1940	25	0
1	B	1964	0	2013	34	0
2	C	94	0	97	4	0
2	D	79	0	88	2	0
3	A	19	0	13	1	0
3	B	19	0	12	2	0

Continued on next page...

Continued from previous page...

Mol	Chain	Non-H	H(model)	H(added)	Clashes	Symm-Clashes
4	A	13	0	0	0	0
4	B	3	0	0	0	0
All	All	4099	0	4163	60	0

The all-atom clashscore is defined as the number of clashes found per 1000 atoms (including hydrogen atoms). The all-atom clashscore for this structure is 7.

All (60) close contacts within the same asymmetric unit are listed below, sorted by their clash magnitude.

Atom-1	Atom-2	Interatomic distance (Å)	Clash overlap (Å)
1:B:467:LYS:NZ	1:B:467:LYS:CE	1.73	1.51
1:A:528:MET:HE3	1:A:533:VAL:HG21	1.37	1.04
1:A:519:ASN:HD22	1:B:519:ASN:HD22	1.06	0.99
1:B:377:HIS:NE2	1:B:460:THR:HB	1.90	0.87
1:A:519:ASN:ND2	1:B:519:ASN:HD22	1.82	0.78
1:B:308:LEU:HD21	1:B:477:ARG:HB3	1.67	0.77
1:B:377:HIS:CE1	1:B:460:THR:HB	2.24	0.73
1:A:519:ASN:HD22	1:B:519:ASN:ND2	1.86	0.71
1:B:331:TYR:CE1	1:B:333:PRO:HA	2.27	0.70
1:B:331:TYR:CZ	1:B:333:PRO:HA	2.27	0.69
1:B:348:ASN:HD21	1:B:352:ARG:HH21	1.45	0.62
1:B:348:ASN:ND2	1:B:352:ARG:HH21	1.98	0.62
3:B:1:EI1:HAK2	3:B:1:EI1:HAF	1.81	0.61
1:B:467:LYS:NZ	1:B:467:LYS:CD	2.61	0.61
1:B:330:GLU:HG2	1:B:348:ASN:ND2	2.18	0.59
1:A:528:MET:CE	1:A:533:VAL:HG21	2.23	0.58
1:A:418:VAL:HG13	1:A:528:MET:CE	2.35	0.57
1:B:310:LEU:HD22	1:B:314:GLN:HB3	1.86	0.57
1:A:455:ASN:O	1:A:458:VAL:HG12	2.07	0.55
3:B:1:EI1:HAK2	3:B:1:EI1:CAF	2.35	0.55
1:A:322:ALA:HA	1:A:363:ARG:HE	1.72	0.54
1:B:458:VAL:HG22	1:B:472:LYS:HD3	1.89	0.54
1:A:418:VAL:HG13	1:A:528:MET:HE1	1.90	0.54
1:B:308:LEU:HA	1:B:481:LYS:HD2	1.90	0.54
1:A:392:VAL:HG11	1:A:431:THR:HG22	1.91	0.52
1:B:465:THR:O	1:B:469:LEU:HD13	2.10	0.52
1:B:455:ASN:O	1:B:458:VAL:HG12	2.10	0.52
2:C:691:HIS:O	2:C:695:GLN:HG2	2.10	0.51
1:A:418:VAL:CG1	1:A:528:MET:HE2	2.41	0.51
1:B:396:MET:CE	1:B:436:ARG:HA	2.42	0.49
1:B:366:GLY:O	1:B:474:HIS:HE1	1.95	0.48

Continued on next page...

Continued from previous page...

Atom-1	Atom-2	Interatomic distance (Å)	Clash overlap (Å)
1:B:464:SER:O	1:B:467:LYS:HE3	2.13	0.48
2:C:689:ILE:HG23	2:C:692:ARG:HH12	1.79	0.46
1:A:401:LYS:HD3	1:A:409:LEU:HG	1.98	0.45
1:B:396:MET:HE1	1:B:436:ARG:HA	1.97	0.45
1:A:516:HIS:HA	1:B:519:ASN:HD21	1.82	0.45
1:B:497:LEU:HG	1:B:501[B]:HIS:HE1	1.81	0.44
1:A:332:ASP:OD2	1:A:334:THR:OG1	2.26	0.44
2:D:688:LYS:HB2	2:D:688:LYS:HE2	1.77	0.44
1:B:472:LYS:HE3	1:B:472:LYS:HB2	1.68	0.44
1:B:331:TYR:CE1	1:B:333:PRO:CA	2.99	0.44
2:C:689:ILE:HG23	2:C:692:ARG:NH1	2.33	0.44
1:A:330:GLU:O	1:A:331:TYR:C	2.57	0.43
1:A:331:TYR:CZ	1:A:333:PRO:HA	2.54	0.43
1:A:359:ASN:HB3	1:A:363:ARG:HH12	1.84	0.43
1:B:470:GLU:OE2	1:B:470:GLU:HA	2.19	0.43
1:B:313:ASP:OD1	1:B:488:HIS:NE2	2.49	0.43
1:A:424:ILE:HA	1:A:427:MET:HE2	2.00	0.43
1:B:358:ILE:CD1	2:D:693:LEU:HD23	2.49	0.43
1:A:308:LEU:HA	1:A:308:LEU:HD12	1.75	0.42
1:A:358:ILE:CD1	2:C:693:LEU:HD13	2.49	0.42
1:B:369:ASP:HB2	1:B:474:HIS:CE1	2.54	0.42
1:B:539:LEU:O	1:B:543:MET:HG2	2.19	0.42
1:A:470:GLU:HG2	1:A:471:GLU:N	2.34	0.42
1:A:306:LEU:N	1:A:306:LEU:HD22	2.34	0.41
3:A:1:EI1:CAF	3:A:1:EI1:HAK2	2.50	0.41
1:A:498:GLN:HA	1:A:501[A]:HIS:CE1	2.56	0.41
1:A:459:TYR:CD2	1:B:513[A]:HIS:CE1	3.08	0.41
1:B:371:THR:O	1:B:375:GLN:HG3	2.21	0.41
1:A:459:TYR:CE1	1:B:434:ARG:HD3	2.57	0.40

There are no symmetry-related clashes.

5.3 Torsion angles [i](#)

5.3.1 Protein backbone [i](#)

In the following table, the Percentiles column shows the percent Ramachandran outliers of the chain as a percentile score with respect to all X-ray entries followed by that with respect to entries of similar resolution.

The Analysed column shows the number of residues for which the backbone conformation was analysed, and the total number of residues.

Mol	Chain	Analysed	Favoured	Allowed	Outliers	Percentiles	
1	A	238/258 (92%)	234 (98%)	3 (1%)	1 (0%)	36	25
1	B	246/258 (95%)	239 (97%)	7 (3%)	0	100	100
2	C	9/13 (69%)	8 (89%)	1 (11%)	0	100	100
2	D	7/13 (54%)	7 (100%)	0	0	100	100
All	All	500/542 (92%)	488 (98%)	11 (2%)	1 (0%)	49	40

All (1) Ramachandran outliers are listed below:

Mol	Chain	Res	Type
1	A	331	TYR

5.3.2 Protein sidechains [i](#)

In the following table, the Percentiles column shows the percent sidechain outliers of the chain as a percentile score with respect to all X-ray entries followed by that with respect to entries of similar resolution.

The Analysed column shows the number of residues for which the sidechain conformation was analysed, and the total number of residues.

Mol	Chain	Analysed	Rotameric	Outliers	Percentiles	
1	A	218/233 (94%)	203 (93%)	15 (7%)	17	8
1	B	224/233 (96%)	215 (96%)	9 (4%)	34	24
2	C	10/13 (77%)	9 (90%)	1 (10%)	8	3
2	D	9/13 (69%)	8 (89%)	1 (11%)	7	2
All	All	461/492 (94%)	435 (94%)	26 (6%)	24	12

All (26) residues with a non-rotameric sidechain are listed below:

Mol	Chain	Res	Type
1	A	308	LEU
1	A	310	LEU
1	A	321	ASP
1	A	345	LEU
1	A	432	SER
1	A	470	GLU
1	A	471	GLU
1	A	481	LYS
1	A	497	LEU
1	A	501[A]	HIS

Continued on next page...

Continued from previous page...

Mol	Chain	Res	Type
1	A	501[B]	HIS
1	A	520	LYS
1	A	532	ASN
1	A	534	VAL
1	A	545	ASP
1	B	306	LEU
1	B	321[A]	ASP
1	B	348	ASN
1	B	460	THR
1	B	462	LEU
1	B	472	LYS
1	B	473	ASP
1	B	477	ARG
1	B	541	LEU
2	C	688	LYS
2	D	693	LEU

Some sidechains can be flipped to improve hydrogen bonding and reduce clashes. All (10) such sidechains are listed below:

Mol	Chain	Res	Type
1	A	398	HIS
1	A	532	ASN
1	B	348	ASN
1	B	398	HIS
1	B	474	HIS
1	B	498	GLN
1	B	519	ASN
2	C	695	GLN
2	D	691	HIS
2	D	695	GLN

5.3.3 RNA [i](#)

There are no RNA molecules in this entry.

5.4 Non-standard residues in protein, DNA, RNA chains [i](#)

There are no non-standard protein/DNA/RNA residues in this entry.

5.5 Carbohydrates [i](#)

There are no carbohydrates in this entry.

5.6 Ligand geometry [i](#)

2 ligands are modelled in this entry.

In the following table, the Counts columns list the number of bonds (or angles) for which Mogul statistics could be retrieved, the number of bonds (or angles) that are observed in the model and the number of bonds (or angles) that are defined in the Chemical Component Dictionary. The Link column lists molecule types, if any, to which the group is linked. The Z score for a bond length (or angle) is the number of standard deviations the observed value is removed from the expected value. A bond length (or angle) with $|Z| > 2$ is considered an outlier worth inspection. RMSZ is the root-mean-square of all Z scores of the bond lengths (or angles).

Mol	Type	Chain	Res	Link	Bond lengths			Bond angles		
					Counts	RMSZ	# Z > 2	Counts	RMSZ	# Z > 2
3	EI1	A	1	-	19,21,21	2.65	3 (15%)	24,30,30	1.60	3 (12%)
3	EI1	B	1	-	19,21,21	2.58	3 (15%)	24,30,30	1.82	6 (25%)

In the following table, the Chirals column lists the number of chiral outliers, the number of chiral centers analysed, the number of these observed in the model and the number defined in the Chemical Component Dictionary. Similar counts are reported in the Torsion and Rings columns. '-' means no outliers of that kind were identified.

Mol	Type	Chain	Res	Link	Chirals	Torsions	Rings
3	EI1	A	1	-	-	0/6/6/6	0/3/3/3
3	EI1	B	1	-	-	0/6/6/6	0/3/3/3

All (6) bond length outliers are listed below:

Mol	Chain	Res	Type	Atoms	Z	Observed(Å)	Ideal(Å)
3	A	1	EI1	NAL-NAS	-8.04	1.24	1.39
3	B	1	EI1	NAL-NAS	-8.00	1.25	1.39
3	A	1	EI1	OAB-CAM	-5.75	1.23	1.37
3	B	1	EI1	OAB-CAM	-5.65	1.23	1.37
3	A	1	EI1	CAO-NAS	-4.44	1.35	1.44
3	B	1	EI1	CAO-NAS	-4.12	1.36	1.44

All (9) bond angle outliers are listed below:

Mol	Chain	Res	Type	Atoms	Z	Observed(°)	Ideal(°)
3	B	1	EI1	CAO-NAS-CAP	-4.89	124.73	129.93

Continued on next page...

Continued from previous page...

Mol	Chain	Res	Type	Atoms	Z	Observed(°)	Ideal(°)
3	A	1	EI1	CAO-NAS-CAP	-3.09	126.64	129.93
3	B	1	EI1	CAG-CAO-CAF	-2.18	118.04	121.32
3	B	1	EI1	CAJ-CAR-CAQ	2.22	121.29	118.26
3	B	1	EI1	CAD-CAF-CAO	2.55	121.98	119.09
3	A	1	EI1	CAI-CAQ-NAL	2.72	133.49	129.91
3	B	1	EI1	CAI-CAQ-NAL	2.76	133.54	129.91
3	B	1	EI1	CAK-CAP-NAS	4.28	127.85	120.00
3	A	1	EI1	CAK-CAP-NAS	5.21	129.55	120.00

There are no chirality outliers.

There are no torsion outliers.

There are no ring outliers.

2 monomers are involved in 3 short contacts:

Mol	Chain	Res	Type	Clashes	Symm-Clashes
3	A	1	EI1	1	0
3	B	1	EI1	2	0

5.7 Other polymers [i](#)

There are no such residues in this entry.

5.8 Polymer linkage issues [i](#)

There are no chain breaks in this entry.

6 Fit of model and data [i](#)

6.1 Protein, DNA and RNA chains [i](#)

In the following table, the column labelled ‘#RSRZ > 2’ contains the number (and percentage) of RSRZ outliers, followed by percent RSRZ outliers for the chain as percentile scores relative to all X-ray entries and entries of similar resolution. The OWAB column contains the minimum, median, 95th percentile and maximum values of the occupancy-weighted average B-factor per residue. The column labelled ‘Q < 0.9’ lists the number of (and percentage) of residues with an average occupancy less than 0.9.

Mol	Chain	Analysed	<RSRZ>	#RSRZ>2	OWAB(Å ²)	Q<0.9
1	A	236/258 (91%)	0.34	17 (7%) 15 17	20, 29, 52, 72	0
1	B	245/258 (94%)	0.40	20 (8%) 11 13	21, 29, 52, 80	2 (0%)
2	C	11/13 (84%)	1.52	3 (27%) 0 0	23, 30, 56, 67	0
2	D	9/13 (69%)	0.93	1 (11%) 5 6	27, 35, 44, 55	0
All	All	501/542 (92%)	0.40	41 (8%) 11 13	20, 29, 55, 80	2 (0%)

All (41) RSRZ outliers are listed below:

Mol	Chain	Res	Type	RSRZ
1	B	549	LEU	12.0
1	B	466	LEU	8.4
1	B	465	THR	7.5
1	A	334	THR	6.9
1	B	462	LEU	6.1
1	B	334	THR	5.7
2	C	686	LYS	5.5
2	D	696	ASP	5.2
1	B	333	PRO	5.0
1	B	306	LEU	4.6
1	A	336	PRO	4.6
1	A	533	VAL	4.1
1	B	463	SER	3.8
2	C	687	HIS	3.8
1	A	306	LEU	3.4
1	B	461	PHE	3.4
2	C	696	ASP	3.4
1	A	531	LYS	3.3
1	B	460	THR	3.3
1	A	346	LEU	3.2
1	B	468	SER	3.2

Continued on next page...

Continued from previous page...

Mol	Chain	Res	Type	RSRZ
1	B	305	SER	3.1
1	B	467	LYS	3.0
1	B	335	ARG	2.9
1	A	459	TYR	2.8
1	B	469	LEU	2.8
1	A	332	ASP	2.7
1	B	437	MET	2.7
1	A	335	ARG	2.7
1	A	333	PRO	2.7
1	A	305	SER	2.6
1	B	501[A]	HIS	2.5
1	A	340	ALA	2.5
1	A	397	GLU	2.5
1	A	331	TYR	2.5
1	B	548	ARG	2.3
1	A	501[A]	HIS	2.2
1	A	482	ILE	2.1
1	A	337	PHE	2.1
1	B	470	GLU	2.1
1	B	332	ASP	2.1

6.2 Non-standard residues in protein, DNA, RNA chains [i](#)

There are no non-standard protein/DNA/RNA residues in this entry.

6.3 Carbohydrates [i](#)

There are no carbohydrates in this entry.

6.4 Ligands [i](#)

In the following table, the Atoms column lists the number of modelled atoms in the group and the number defined in the chemical component dictionary. The B-factors column lists the minimum, median, 95th percentile and maximum values of B factors of atoms in the group. The column labelled 'Q<0.9' lists the number of atoms with occupancy less than 0.9.

Mol	Type	Chain	Res	Atoms	RSCC	RSR	B-factors(Å ²)	Q<0.9
3	EI1	A	1	19/19	0.93	0.12	10,25,31,31	0
3	EI1	B	1	19/19	0.94	0.14	8,14,20,20	0

6.5 Other polymers [i](#)

There are no such residues in this entry.