



# Full wwPDB X-ray Structure Validation Report ⓘ

Nov 28, 2021 – 01:03 pm GMT

PDB ID : 7QB7  
Title : Crystal Structure of Prolyl-tRNA synthetase (ProRS, Proline-tRNA ligase) from Plasmodium falciparum in complex with MAT345 and L-Proline  
Authors : Johansson, C.; Tye, M.; Payne, N.C.; Mazitschek, R.; Oppermann, U.C.T.  
Deposited on : 2021-11-18  
Resolution : 1.90 Å(reported)

This is a Full wwPDB X-ray Structure Validation Report for a publicly released PDB entry.

We welcome your comments at [validation@mail.wwpdb.org](mailto:validation@mail.wwpdb.org)

A user guide is available at

<https://www.wwpdb.org/validation/2017/XrayValidationReportHelp>

with specific help available everywhere you see the ⓘ symbol.

---

The following versions of software and data (see [references ⓘ](#)) were used in the production of this report:

MolProbity : 4.02b-467  
Mogul : 1.8.4 (270009), CSD as541be (2020)  
Xtrriage (Phenix) : 1.13  
EDS : 2.23.2  
buster-report : 1.1.7 (2018)  
Percentile statistics : 20191225.v01 (using entries in the PDB archive December 25th 2019)  
Refmac : 5.8.0267  
CCP4 : 7.1.010 (Gargrove)  
Ideal geometry (proteins) : Engh & Huber (2001)  
Ideal geometry (DNA, RNA) : Parkinson et al. (1996)  
Validation Pipeline (wwPDB-VP) : 2.23.2

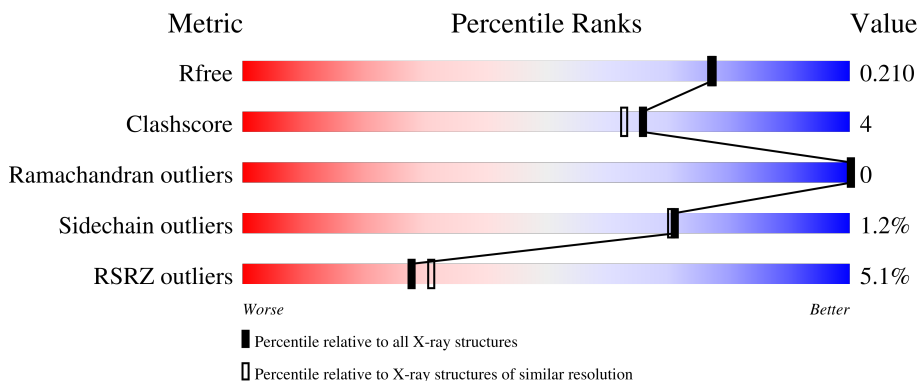
# 1 Overall quality at a glance

The following experimental techniques were used to determine the structure:

*X-RAY DIFFRACTION*

The reported resolution of this entry is 1.90 Å.

Percentile scores (ranging between 0-100) for global validation metrics of the entry are shown in the following graphic. The table shows the number of entries on which the scores are based.



Metric	Whole archive (#Entries)	Similar resolution (#Entries, resolution range(Å))
$R_{free}$	130704	6207 (1.90-1.90)
Clashscore	141614	6847 (1.90-1.90)
Ramachandran outliers	138981	6760 (1.90-1.90)
Sidechain outliers	138945	6760 (1.90-1.90)
RSRZ outliers	127900	6082 (1.90-1.90)

The table below summarises the geometric issues observed across the polymeric chains and their fit to the electron density. The red, orange, yellow and green segments of the lower bar indicate the fraction of residues that contain outliers for  $\geq 3$ , 2, 1 and 0 types of geometric quality criteria respectively. A grey segment represents the fraction of residues that are not modelled. The numeric value for each fraction is indicated below the corresponding segment, with a dot representing fractions  $\leq 5\%$ . The upper red bar (where present) indicates the fraction of residues that have poor fit to the electron density. The numeric value is given above the bar.

Mol	Chain	Length	Quality of chain
1	A	504	

## 2 Entry composition i

There are 5 unique types of molecules in this entry. The entry contains 4553 atoms, of which 344 are hydrogens and 0 are deuteriums.

In the tables below, the ZeroOcc column contains the number of atoms modelled with zero occupancy, the AltConf column contains the number of residues with at least one atom in alternate conformation and the Trace column contains the number of residues modelled with at most 2 atoms.

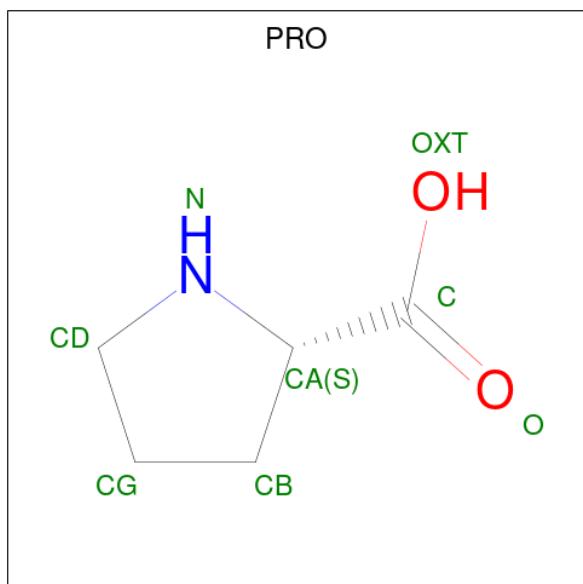
- Molecule 1 is a protein called Proline-tRNA ligase.

Mol	Chain	Residues	Atoms						ZeroOcc	AltConf	Trace
			Total	C	H	N	O	S			
1	A	486	4273	2541	344	646	721	21	0	1	0

There are 6 discrepancies between the modelled and reference sequences:

Chain	Residue	Modelled	Actual	Comment	Reference
A	243	SER	-	expression tag	UNP Q8I5R7
A	244	ASP	-	expression tag	UNP Q8I5R7
A	245	ASN	-	expression tag	UNP Q8I5R7
A	246	ALA	-	expression tag	UNP Q8I5R7
A	247	ILE	-	expression tag	UNP Q8I5R7
A	248	ALA	-	expression tag	UNP Q8I5R7

- Molecule 2 is PROLINE (three-letter code: PRO) (formula: C<sub>5</sub>H<sub>9</sub>NO<sub>2</sub>).



Mol	Chain	Residues	Atoms				ZeroOcc	AltConf
			Total	C	N	O		
2	A	1	8	5	1	2	0	0

- Molecule 3 is 1,2-ETHANEDIOL (three-letter code: EDO) (formula:  $C_2H_6O_2$ ).



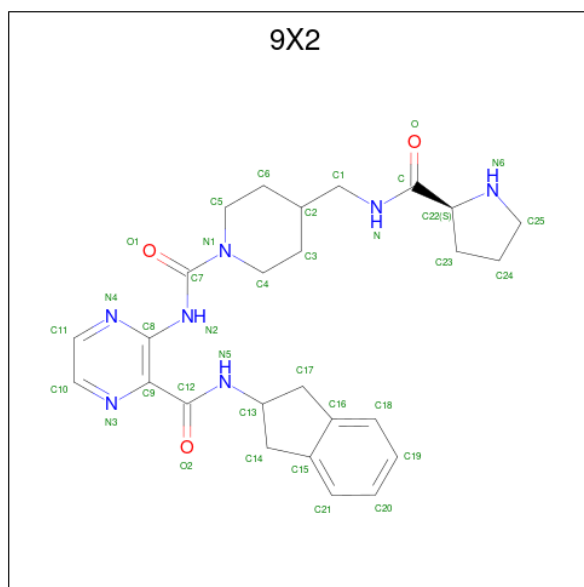
Mol	Chain	Residues	Atoms			ZeroOcc	AltConf
			Total	C	O		
3	A	1	4	2	2	0	0
3	A	1	4	2	2	0	0
3	A	1	4	2	2	0	0
3	A	1	4	2	2	0	0
3	A	1	4	2	2	0	0
3	A	1	4	2	2	0	0
3	A	1	4	2	2	0	0
3	A	1	4	2	2	0	0
3	A	1	4	2	2	0	0
3	A	1	4	2	2	0	0
3	A	1	4	2	2	0	0

*Continued on next page...*

Continued from previous page...

Mol	Chain	Residues	Atoms			ZeroOcc	AltConf
3	A	1	Total	C	O	0	0
			4	2	2		
3	A	1	Total	C	O	0	0
			4	2	2		

- Molecule 4 is {N}-(2,3-dihydro-1 {H}-inden-2-yl)-3-[[4-[[[(2 {S})-pyrrolidin-2-yl]carbonylamino]methyl]piperidin-1-yl]carbonylamino]pyrazine-2-carboxamide (three-letter code: 9X2) (formula: C<sub>26</sub>H<sub>33</sub>N<sub>7</sub>O<sub>3</sub>) (labeled as "Ligand of Interest" by depositor).



Mol	Chain	Residues	Atoms				ZeroOcc	AltConf
4	A	1	Total	C	N	O	0	0
			36	26	7	3		

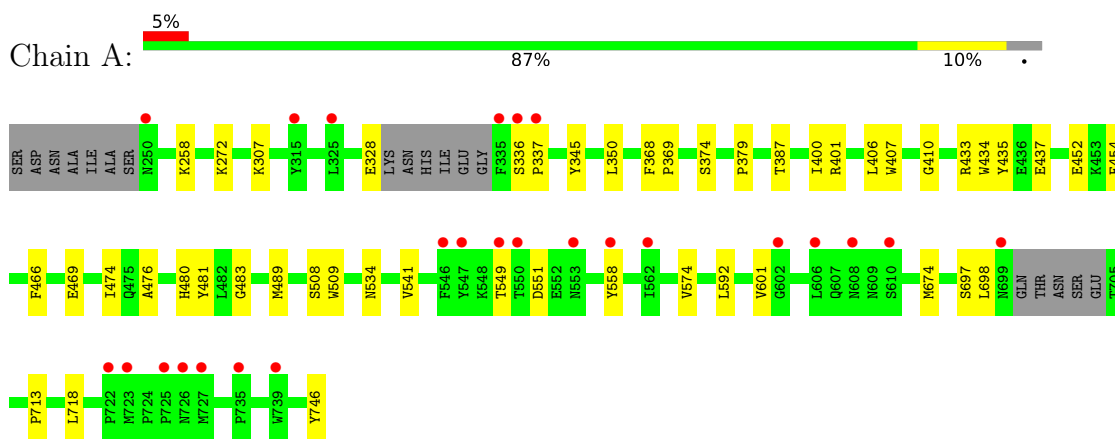
- Molecule 5 is water.

Mol	Chain	Residues	Atoms		ZeroOcc	AltConf
5	A	184	Total	O	0	0
			184	184		

### 3 Residue-property plots [i](#)

These plots are drawn for all protein, RNA, DNA and oligosaccharide chains in the entry. The first graphic for a chain summarises the proportions of the various outlier classes displayed in the second graphic. The second graphic shows the sequence view annotated by issues in geometry and electron density. Residues are color-coded according to the number of geometric quality criteria for which they contain at least one outlier: green = 0, yellow = 1, orange = 2 and red = 3 or more. A red dot above a residue indicates a poor fit to the electron density ( $RSRZ > 2$ ). Stretches of 2 or more consecutive residues without any outlier are shown as a green connector. Residues present in the sample, but not in the model, are shown in grey.

- Molecule 1: Proline-tRNA ligase



## 4 Data and refinement statistics

Property	Value	Source
Space group	P 32 2 1	Depositor
Cell constants a, b, c, $\alpha$ , $\beta$ , $\gamma$	102.96Å 102.96Å 127.12Å 90.00° 90.00° 120.00°	Depositor
Resolution (Å)	44.58 – 1.90 51.76 – 1.90	Depositor EDS
% Data completeness (in resolution range)	99.9 (44.58-1.90) 100.0 (51.76-1.90)	Depositor EDS
$R_{merge}$	0.07	Depositor
$R_{sym}$	(Not available)	Depositor
$\langle I/\sigma(I) \rangle$ <sup>1</sup>	1.07 (at 1.90Å)	Xtrriage
Refinement program	PHENIX 1.19.2_4158	Depositor
R, $R_{free}$	0.183 , 0.210 0.183 , 0.210	Depositor DCC
$R_{free}$ test set	3017 reflections (4.88%)	wwPDB-VP
Wilson B-factor (Å <sup>2</sup> )	43.2	Xtrriage
Anisotropy	0.316	Xtrriage
Bulk solvent $k_{sol}$ (e/Å <sup>3</sup> ), $B_{sol}$ (Å <sup>2</sup> )	(Not available) , (Not available)	EDS
L-test for twinning <sup>2</sup>	$\langle  L  \rangle = 0.51$ , $\langle L^2 \rangle = 0.35$	Xtrriage
Estimated twinning fraction	0.016 for -h,-k,l	Xtrriage
$F_o, F_c$ correlation	0.97	EDS
Total number of atoms	4553	wwPDB-VP
Average B, all atoms (Å <sup>2</sup> )	51.0	wwPDB-VP

Xtrriage's analysis on translational NCS is as follows: *The largest off-origin peak in the Patterson function is 3.06% of the height of the origin peak. No significant pseudotranslation is detected.*

<sup>1</sup>Intensities estimated from amplitudes.

<sup>2</sup>Theoretical values of  $\langle |L| \rangle$ ,  $\langle L^2 \rangle$  for acentric reflections are 0.5, 0.333 respectively for untwinned datasets, and 0.375, 0.2 for perfectly twinned datasets.

## 5 Model quality [i](#)

### 5.1 Standard geometry [i](#)

Bond lengths and bond angles in the following residue types are not validated in this section: EDO, 9X2

The Z score for a bond length (or angle) is the number of standard deviations the observed value is removed from the expected value. A bond length (or angle) with  $|Z| > 5$  is considered an outlier worth inspection. RMSZ is the root-mean-square of all Z scores of the bond lengths (or angles).

Mol	Chain	Bond lengths		Bond angles	
		RMSZ	# Z  >5	RMSZ	# Z  >5
1	A	0.53	0/4028	0.66	0/5461

There are no bond length outliers.

There are no bond angle outliers.

There are no chirality outliers.

There are no planarity outliers.

### 5.2 Too-close contacts [i](#)

In the following table, the Non-H and H(model) columns list the number of non-hydrogen atoms and hydrogen atoms in the chain respectively. The H(added) column lists the number of hydrogen atoms added and optimized by MolProbity. The Clashes column lists the number of clashes within the asymmetric unit, whereas Symm-Clashes lists symmetry-related clashes.

Mol	Chain	Non-H	H(model)	H(added)	Clashes	Symm-Clashes
1	A	3929	344	3834	32	0
2	A	8	0	7	0	0
3	A	52	0	78	6	0
4	A	36	0	0	1	0
5	A	184	0	0	1	0
All	All	4209	344	3919	32	0

The all-atom clashscore is defined as the number of clashes found per 1000 atoms (including hydrogen atoms). The all-atom clashscore for this structure is 4.

All (32) close contacts within the same asymmetric unit are listed below, sorted by their clash magnitude.



Atom-1	Atom-2	Interatomic distance (Å)	Clash overlap (Å)
1:A:387:THR:HG22	1:A:406:LEU:HD23	1.48	0.94
1:A:379:PRO:HD3	3:A:805:EDO:H11	1.61	0.82
1:A:697:SER:O	1:A:698:LEU:HD22	1.84	0.76
1:A:328:GLU:HA	1:A:489:MET:CE	2.19	0.73
1:A:345:TYR:HD1	1:A:350:LEU:HD23	1.57	0.70
1:A:328:GLU:HA	1:A:489:MET:HE1	1.74	0.69
1:A:549:THR:HG22	1:A:551:ASP:H	1.62	0.64
1:A:437:GLU:O	3:A:814:EDO:H11	2.00	0.61
1:A:387:THR:HG22	1:A:406:LEU:CD2	2.28	0.60
1:A:345:TYR:CD1	1:A:350:LEU:HD23	2.38	0.59
1:A:258:LYS:HE2	1:A:469:GLU:CD	2.26	0.55
1:A:697:SER:C	1:A:698:LEU:HD22	2.26	0.55
1:A:328:GLU:HA	1:A:489:MET:HE3	1.88	0.55
1:A:454:PHE:HB2	1:A:480:HIS:CE1	2.43	0.54
1:A:534:ASN:ND2	3:A:814:EDO:H11	2.23	0.54
1:A:307:LYS:HB2	3:A:804:EDO:H11	1.90	0.53
1:A:435:TYR:CZ	1:A:476:ALA:HB1	2.44	0.52
1:A:466:PHE:CE1	1:A:674:MET:HG3	2.45	0.52
1:A:433:ARG:NH1	5:A:902:HOH:O	2.44	0.49
1:A:541:VAL:HG23	1:A:574:VAL:HG13	1.95	0.48
1:A:437:GLU:HB3	3:A:814:EDO:H12	1.95	0.48
1:A:558:TYR:HD2	1:A:601:VAL:HG11	1.80	0.47
1:A:481:TYR:CZ	1:A:483:GLY:HA2	2.50	0.47
1:A:452:GLU:O	4:A:815:9X2:C25	2.65	0.44
1:A:368:PHE:N	1:A:369:PRO:CD	2.81	0.43
1:A:336:SER:N	1:A:337:PRO:HD2	2.34	0.43
1:A:474:ILE:HG12	1:A:746:TYR:HD2	1.84	0.43
1:A:410:GLY:O	1:A:508:SER:HA	2.19	0.42
1:A:400:ILE:HG22	1:A:401:ARG:HG3	2.01	0.42
1:A:474:ILE:HG12	1:A:746:TYR:CD2	2.55	0.42
1:A:272:LYS:HB3	1:A:592:LEU:HD21	2.01	0.41
1:A:718:LEU:HA	3:A:802:EDO:H12	2.02	0.41

There are no symmetry-related clashes.

## 5.3 Torsion angles [i](#)

### 5.3.1 Protein backbone [i](#)

In the following table, the Percentiles column shows the percent Ramachandran outliers of the chain as a percentile score with respect to all X-ray entries followed by that with respect to entries of similar resolution.

The Analysed column shows the number of residues for which the backbone conformation was analysed, and the total number of residues.

Mol	Chain	Analysed	Favoured	Allowed	Outliers	Percentiles	
1	A	481/504 (95%)	470 (98%)	11 (2%)	0	100	100

There are no Ramachandran outliers to report.

### 5.3.2 Protein sidechains [i](#)

In the following table, the Percentiles column shows the percent sidechain outliers of the chain as a percentile score with respect to all X-ray entries followed by that with respect to entries of similar resolution.

The Analysed column shows the number of residues for which the sidechain conformation was analysed, and the total number of residues.

Mol	Chain	Analysed	Rotameric	Outliers	Percentiles	
1	A	420/457 (92%)	415 (99%)	5 (1%)	71	70

All (5) residues with a non-rotameric sidechain are listed below:

Mol	Chain	Res	Type
1	A	374	SER
1	A	407	TRP
1	A	434	TRP
1	A	509	TRP
1	A	713	PRO

Sometimes sidechains can be flipped to improve hydrogen bonding and reduce clashes. All (2) such sidechains are listed below:

Mol	Chain	Res	Type
1	A	408	GLN
1	A	534	ASN

### 5.3.3 RNA [i](#)

There are no RNA molecules in this entry.

## 5.4 Non-standard residues in protein, DNA, RNA chains [i](#)

There are no non-standard protein/DNA/RNA residues in this entry.

## 5.5 Carbohydrates [i](#)

There are no monosaccharides in this entry.

## 5.6 Ligand geometry [i](#)

15 ligands are modelled in this entry.

There are no bond length outliers.

There are no bond angle outliers.

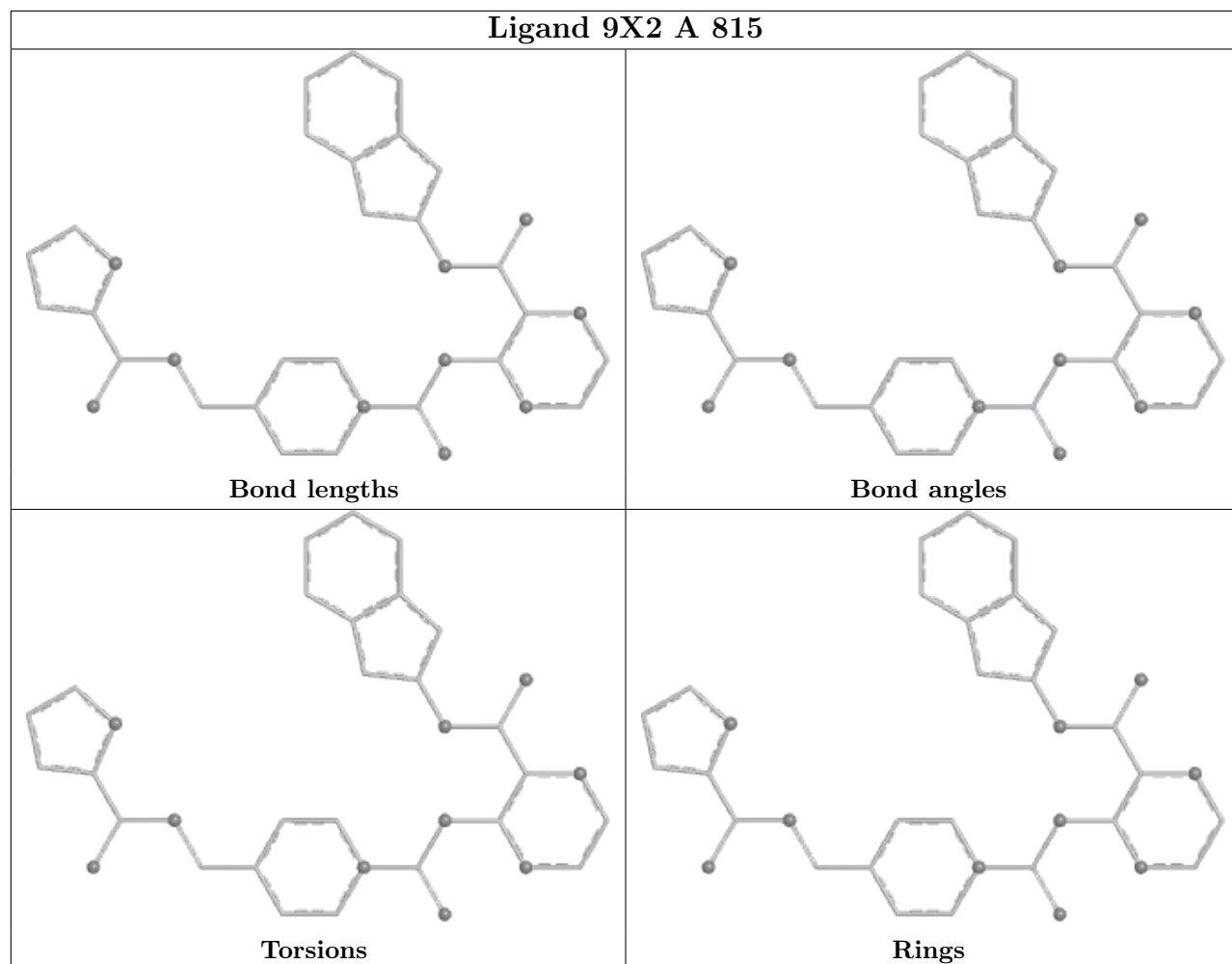
There are no chirality outliers.

There are no torsion outliers.

There are no ring outliers.

No monomer is involved in short contacts.

The following is a two-dimensional graphical depiction of Mogul quality analysis of bond lengths, bond angles, torsion angles, and ring geometry for all instances of the Ligand of Interest. In addition, ligands with molecular weight > 250 and outliers as shown on the validation Tables will also be included. For torsion angles, if less than 5% of the Mogul distribution of torsion angles is within 10 degrees of the torsion angle in question, then that torsion angle is considered an outlier. Any bond that is central to one or more torsion angles identified as an outlier by Mogul will be highlighted in the graph. For rings, the root-mean-square deviation (RMSD) between the ring in question and similar rings identified by Mogul is calculated over all ring torsion angles. If the average RMSD is greater than 60 degrees and the minimal RMSD between the ring in question and any Mogul-identified rings is also greater than 60 degrees, then that ring is considered an outlier. The outliers are highlighted in purple. The color gray indicates Mogul did not find sufficient equivalents in the CSD to analyse the geometry.



## 5.7 Other polymers [i](#)

There are no such residues in this entry.

## 5.8 Polymer linkage issues [i](#)

There are no chain breaks in this entry.

## 6 Fit of model and data

### 6.1 Protein, DNA and RNA chains

In the following table, the column labelled ‘#RSRZ > 2’ contains the number (and percentage) of RSRZ outliers, followed by percent RSRZ outliers for the chain as percentile scores relative to all X-ray entries and entries of similar resolution. The OWAB column contains the minimum, median, 95<sup>th</sup> percentile and maximum values of the occupancy-weighted average B-factor per residue. The column labelled ‘Q < 0.9’ lists the number of (and percentage) of residues with an average occupancy less than 0.9.

Mol	Chain	Analysed	<RSRZ>	#RSRZ>2	OWAB(Å <sup>2</sup> )	Q<0.9
1	A	486/504 (96%)	0.20	25 (5%) <span style="border: 1px solid red; padding: 2px;">28</span> <span style="border: 1px solid red; padding: 2px;">31</span>	33, 47, 76, 122	0

All (25) RSRZ outliers are listed below:

Mol	Chain	Res	Type	RSRZ
1	A	550	THR	7.5
1	A	549	THR	5.4
1	A	547	TYR	5.1
1	A	725	PRO	4.3
1	A	250	ASN	4.3
1	A	562	ILE	4.1
1	A	726	ASN	3.9
1	A	606	LEU	3.4
1	A	546	PHE	3.0
1	A	722	PRO	2.9
1	A	608	ASN	2.9
1	A	325	LEU	2.7
1	A	610	SER	2.7
1	A	602	GLY	2.6
1	A	723	MET	2.6
1	A	558	TYR	2.5
1	A	335	PHE	2.5
1	A	336	SER	2.4
1	A	553	ASN	2.3
1	A	739	TRP	2.3
1	A	337	PRO	2.3
1	A	727	MET	2.2
1	A	735	PRO	2.1
1	A	699	ASN	2.1
1	A	315	TYR	2.0

## 6.2 Non-standard residues in protein, DNA, RNA chains [i](#)

There are no non-standard protein/DNA/RNA residues in this entry.

## 6.3 Carbohydrates [i](#)

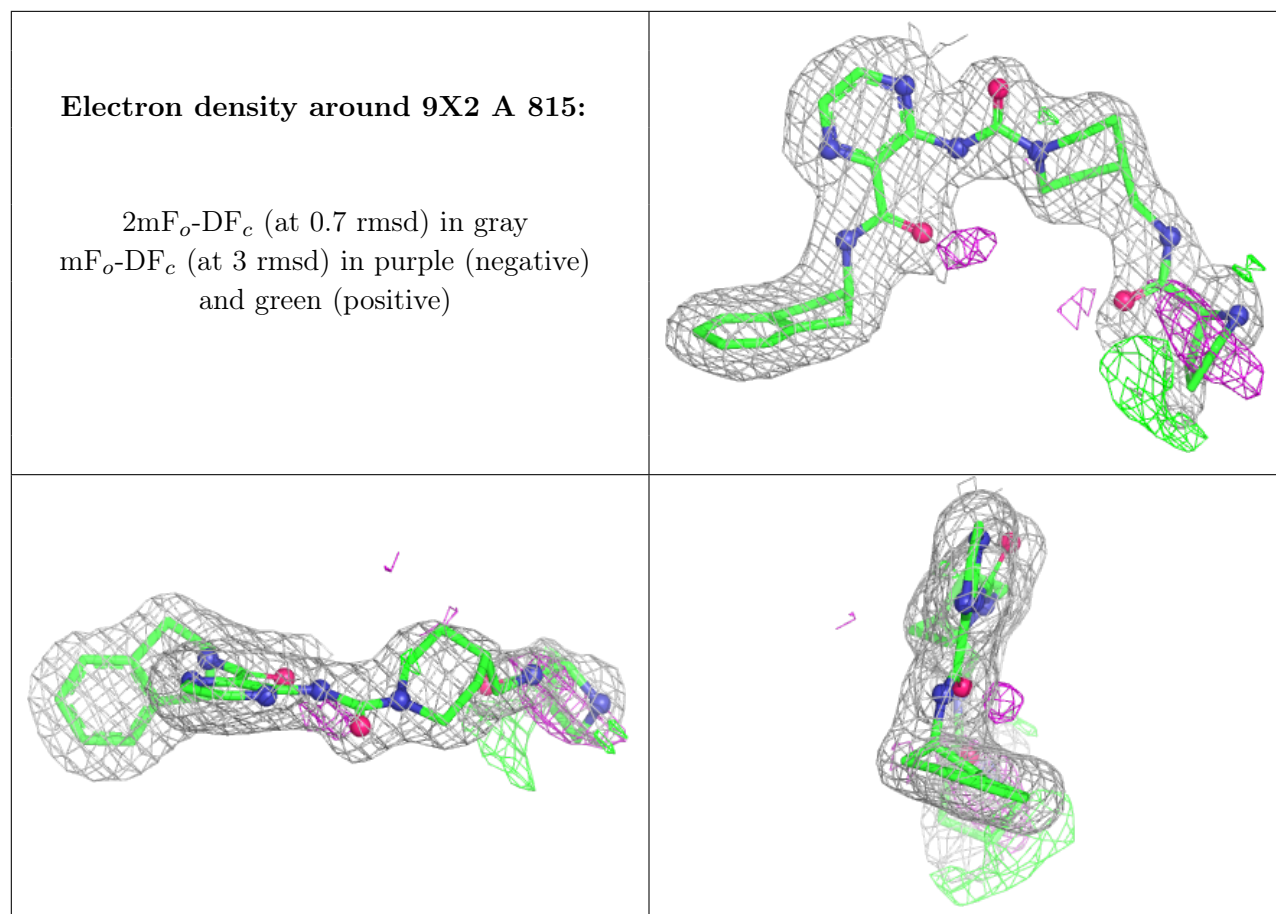
There are no monosaccharides in this entry.

## 6.4 Ligands [i](#)

In the following table, the Atoms column lists the number of modelled atoms in the group and the number defined in the chemical component dictionary. The B-factors column lists the minimum, median, 95<sup>th</sup> percentile and maximum values of B factors of atoms in the group. The column labelled 'Q< 0.9' lists the number of atoms with occupancy less than 0.9.

Mol	Type	Chain	Res	Atoms	RSCC	RSR	B-factors( $\text{\AA}^2$ )	Q<0.9
3	EDO	A	812	4/4	0.61	0.31	49,58,58,72	0
3	EDO	A	814	4/4	0.80	0.24	48,68,71,75	0
3	EDO	A	808	4/4	0.83	0.35	61,69,70,76	0
3	EDO	A	805	4/4	0.86	0.30	48,59,60,61	0
3	EDO	A	811	4/4	0.86	0.13	70,73,79,82	0
3	EDO	A	804	4/4	0.87	0.17	47,56,59,63	0
3	EDO	A	813	4/4	0.90	0.12	61,63,66,75	0
3	EDO	A	806	4/4	0.90	0.26	51,62,67,69	0
4	9X2	A	815	36/36	0.91	0.15	33,39,76,77	0
3	EDO	A	810	4/4	0.92	0.10	64,68,69,73	0
3	EDO	A	809	4/4	0.92	0.14	56,64,65,73	0
3	EDO	A	807	4/4	0.93	0.19	58,64,64,75	0
3	EDO	A	802	4/4	0.94	0.28	42,53,53,55	0
2	PRO	A	801	8/8	0.95	0.13	35,36,45,46	0
3	EDO	A	803	4/4	0.97	0.15	41,44,48,50	0

The following is a graphical depiction of the model fit to experimental electron density of all instances of the Ligand of Interest. In addition, ligands with molecular weight > 250 and outliers as shown on the geometry validation Tables will also be included. Each fit is shown from different orientation to approximate a three-dimensional view.



## 6.5 Other polymers [i](#)

There are no such residues in this entry.