



Full wwPDB X-ray Structure Validation Report ⓘ

Dec 17, 2023 – 05:50 PM EST

PDB ID : 1QD8
Title : COMPLEX OF VANCOMYCIN WITH N-ACETYL GLYCINE
Authors : Loll, P.J.; Kaplan, J.; Selinsky, B.; Axelsen, P.H.
Deposited on : 1999-07-15
Resolution : 1.00 Å(reported)

This is a Full wwPDB X-ray Structure Validation Report for a publicly released PDB entry.

We welcome your comments at validation@mail.wwpdb.org

A user guide is available at

<https://www.wwpdb.org/validation/2017/XrayValidationReportHelp>

with specific help available everywhere you see the ⓘ symbol.

The types of validation reports are described at

<http://www.wwpdb.org/validation/2017/FAQs#types>.

The following versions of software and data (see [references ⓘ](#)) were used in the production of this report:

MolProbity : 4.02b-467
Mogul : 1.8.5 (274361), CSD as541be (2020)
Xtrriage (Phenix) : **NOT EXECUTED**
EDS : **NOT EXECUTED**
Percentile statistics : 20191225.v01 (using entries in the PDB archive December 25th 2019)
Ideal geometry (proteins) : Engh & Huber (2001)
Ideal geometry (DNA, RNA) : Parkinson et al. (1996)
Validation Pipeline (wwPDB-VP) : 2.36

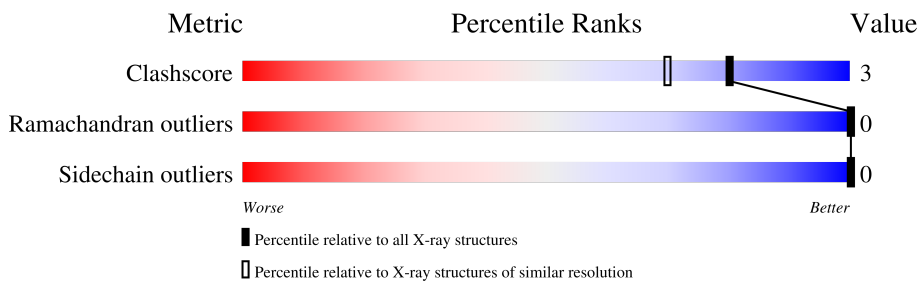
1 Overall quality at a glance

The following experimental techniques were used to determine the structure:

X-RAY DIFFRACTION

The reported resolution of this entry is 1.00 Å.

Percentile scores (ranging between 0-100) for global validation metrics of the entry are shown in the following graphic. The table shows the number of entries on which the scores are based.



Metric	Whole archive (#Entries)	Similar resolution (#Entries, resolution range(Å))
Clashscore	141614	1117 (1.06-0.94)
Ramachandran outliers	138981	1043 (1.06-0.94)
Sidechain outliers	138945	1045 (1.06-0.94)

The table below summarises the geometric issues observed across the polymeric chains and their fit to the electron density. The red, orange, yellow and green segments of the lower bar indicate the fraction of residues that contain outliers for ≥ 3 , 2, 1 and 0 types of geometric quality criteria respectively. A grey segment represents the fraction of residues that are not modelled. The numeric value for each fraction is indicated below the corresponding segment, with a dot representing fractions $\leq 5\%$

Note EDS was not executed.

Mol	Chain	Length	Quality of chain
1	A	7	
1	B	7	
2	C	2	
2	D	2	

The following table lists non-polymeric compounds, carbohydrate monomers and non-standard residues in protein, DNA, RNA chains that are outliers for geometric or electron-density-fit criteria:

Mol	Type	Chain	Res	Chirality	Geometry	Clashes	Electron density
2	BGC	D	1[B]	X	-	-	-

2 Entry composition i

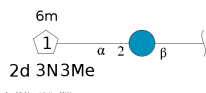
There are 5 unique types of molecules in this entry. The entry contains 267 atoms, of which 0 are hydrogens and 0 are deuteriums.

In the tables below, the ZeroOcc column contains the number of atoms modelled with zero occupancy, the AltConf column contains the number of residues with at least one atom in alternate conformation and the Trace column contains the number of residues modelled with at most 2 atoms.

- Molecule 1 is a protein called VANCOMYCIN.

Mol	Chain	Residues	Atoms					ZeroOcc	AltConf	Trace
			Total	C	Cl	N	O			
1	A	7	80	53	2	8	17	0	0	0
1	B	7	81	53	2	8	18	0	1	0

- Molecule 2 is an oligosaccharide called vancosamine-(1-2)-beta-D-glucopyranose.

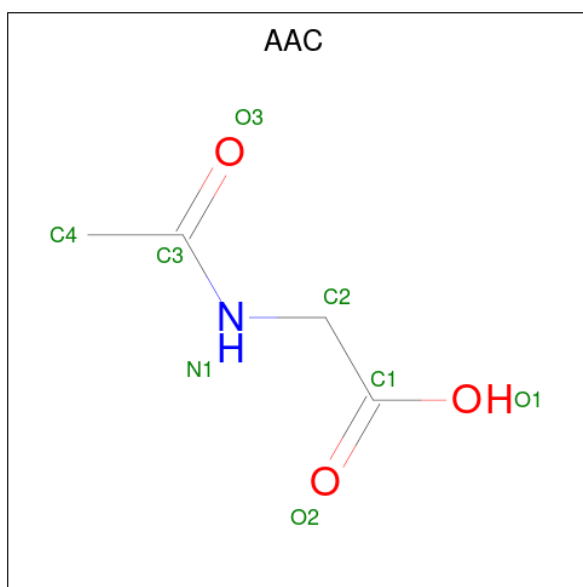


Mol	Chain	Residues	Atoms				ZeroOcc	AltConf	Trace
			Total	C	N	O			
2	C	2	21	13	1	7	0	0	0
2	D	2	32	19	1	12	0	1	0

- Molecule 3 is CHLORIDE ION (three-letter code: CL) (formula: Cl).

Mol	Chain	Residues	Atoms	ZeroOcc	AltConf
3	A	2	Total 2 Cl 2	0	0
3	B	1	Total 1 Cl 1	0	0

- Molecule 4 is ACETYLAMINO-ACETIC ACID (three-letter code: AAC) (formula: C₄H₇NO₃).



Mol	Chain	Residues	Atoms				ZeroOcc	AltConf
			Total	C	N	O		
4	B	1	8	4	1	3	0	0

- Molecule 5 is water.

Mol	Chain	Residues	Atoms		ZeroOcc	AltConf
			Total	O		
5	A	40	42	42	0	3

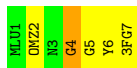
3 Residue-property plots

These plots are drawn for all protein, RNA, DNA and oligosaccharide chains in the entry. The first graphic for a chain summarises the proportions of the various outlier classes displayed in the second graphic. The second graphic shows the sequence view annotated by issues in geometry. Residues are color-coded according to the number of geometric quality criteria for which they contain at least one outlier: green = 0, yellow = 1, orange = 2 and red = 3 or more. Stretches of 2 or more consecutive residues without any outlier are shown as a green connector. Residues present in the sample, but not in the model, are shown in grey.

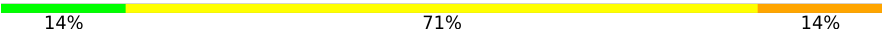
Note EDS was not executed.

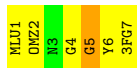
- Molecule 1: VANCOMYCIN

Chain A: 



- Molecule 1: VANCOMYCIN

Chain B: 



- Molecule 2: vancosamine-(1-2)-beta-D-glucopyranose

Chain C: 



- Molecule 2: vancosamine-(1-2)-beta-D-glucopyranose

Chain D: 



4 Data and refinement statistics

Xtrriage (Phenix) and EDS were not executed - this section is therefore incomplete.

Property	Value	Source
Space group	P 43 21 2	Depositor
Cell constants a, b, c, α , β , γ	28.71Å 28.71Å 66.77Å 90.00° 90.00° 90.00°	Depositor
Resolution (Å)	20.00 – 1.00	Depositor
% Data completeness (in resolution range)	95.6 (20.00-1.00)	Depositor
R_{merge}	0.04	Depositor
R_{sym}	(Not available)	Depositor
Refinement program	SHELXL	Depositor
R, R_{free}	0.110 , 0.131	Depositor
Estimated twinning fraction	No twinning to report.	Xtrriage
Total number of atoms	267	wwPDB-VP
Average B, all atoms (Å ²)	8.0	wwPDB-VP

5 Model quality

5.1 Standard geometry

Bond lengths and bond angles in the following residue types are not validated in this section: GHP, AAC, CL, OMZ, MLU, 3FG, BGC, RER, OMY

The Z score for a bond length (or angle) is the number of standard deviations the observed value is removed from the expected value. A bond length (or angle) with $|Z| > 5$ is considered an outlier worth inspection. RMSZ is the root-mean-square of all Z scores of the bond lengths (or angles).

Mol	Chain	Bond lengths		Bond angles	
		RMSZ	# Z >5	RMSZ	# Z >5
1	A	1.20	0/7	1.04	0/8
1	B	2.16	0/7	1.11	0/8
All	All	1.75	0/14	1.08	0/16

There are no bond length outliers.

There are no bond angle outliers.

There are no chirality outliers.

There are no planarity outliers.

5.2 Too-close contacts

In the following table, the Non-H and H(model) columns list the number of non-hydrogen atoms and hydrogen atoms in the chain respectively. The H(added) column lists the number of hydrogen atoms added and optimized by MolProbity. The Clashes column lists the number of clashes within the asymmetric unit, whereas Symm-Clashes lists symmetry-related clashes.

Mol	Chain	Non-H	H(model)	H(added)	Clashes	Symm-Clashes
1	A	80	0	47	1	0
1	B	81	0	41	1	0
2	C	21	0	21	0	0
2	D	32	0	28	0	0
3	A	2	0	0	0	0
3	B	1	0	0	0	0
4	B	8	0	6	0	0
5	A	42	0	0	0	0
All	All	267	0	143	1	0

The all-atom clashscore is defined as the number of clashes found per 1000 atoms (including hydrogen atoms). The all-atom clashscore for this structure is 3.

All (1) close contacts within the same asymmetric unit are listed below, sorted by their clash magnitude.

Atom-1	Atom-2	Interatomic distance (Å)	Clash overlap (Å)
1:A:4:GHP:HA	1:B:5:GHP:O	2.15	0.46

There are no symmetry-related clashes.

5.3 Torsion angles [i](#)

5.3.1 Protein backbone [i](#)

In the following table, the Percentiles column shows the percent Ramachandran outliers of the chain as a percentile score with respect to all X-ray entries followed by that with respect to entries of similar resolution.

The Analysed column shows the number of residues for which the backbone conformation was analysed, and the total number of residues.

Mol	Chain	Analysed	Favoured	Allowed	Outliers	Percentiles	
1	A	1/7 (14%)	0	1 (100%)	0	100	100
1	B	1/7 (14%)	1 (100%)	0	0	100	100
All	All	2/14 (14%)	1 (50%)	1 (50%)	0	100	100

There are no Ramachandran outliers to report.

5.3.2 Protein sidechains [i](#)

In the following table, the Percentiles column shows the percent sidechain outliers of the chain as a percentile score with respect to all X-ray entries followed by that with respect to entries of similar resolution.

The Analysed column shows the number of residues for which the sidechain conformation was analysed, and the total number of residues.

Mol	Chain	Analysed	Rotameric	Outliers	Percentiles	
1	A	1/1 (100%)	1 (100%)	0	100	100
1	B	1/1 (100%)	1 (100%)	0	100	100
All	All	2/2 (100%)	2 (100%)	0	100	100

There are no protein residues with a non-rotameric sidechain to report.

Sometimes sidechains can be flipped to improve hydrogen bonding and reduce clashes. There are no such sidechains identified.

5.3.3 RNA [i](#)

There are no RNA molecules in this entry.

5.4 Non-standard residues in protein, DNA, RNA chains [i](#)

13 non-standard protein/DNA/RNA residues are modelled in this entry.

In the following table, the Counts columns list the number of bonds (or angles) for which Mogul statistics could be retrieved, the number of bonds (or angles) that are observed in the model and the number of bonds (or angles) that are defined in the Chemical Component Dictionary. The Link column lists molecule types, if any, to which the group is linked. The Z score for a bond length (or angle) is the number of standard deviations the observed value is removed from the expected value. A bond length (or angle) with $|Z| > 2$ is considered an outlier worth inspection. RMSZ is the root-mean-square of all Z scores of the bond lengths (or angles).

Mol	Type	Chain	Res	Link	Bond lengths			Bond angles		
					Counts	RMSZ	# Z > 2	Counts	RMSZ	# Z > 2
1	MLU	A	1	1	7,8,9	0.98	0	6,9,11	0.86	0
1	GHP	A	5	1	10,11,12	1.74	3 (30%)	11,14,16	1.37	1 (9%)
1	OMZ	B	2	1	12,14,15	1.20	1 (8%)	17,19,21	1.08	2 (11%)
1	GHP	B	4[B]	2	10,11,12	3.46	3 (30%)	11,14,16	1.17	0
1	3FG	A	7	1	12,13,13	1.69	3 (25%)	14,18,18	1.32	1 (7%)
1	3FG	B	7	1	12,13,13	2.04	4 (33%)	14,18,18	1.40	2 (14%)
1	GHP	A	4	2,1	10,11,12	1.34	1 (10%)	11,14,16	0.92	0
1	OMZ	A	2	1	12,14,15	1.47	2 (16%)	17,19,21	1.70	3 (17%)
1	OMY	B	6	1	12,14,15	1.30	0	17,19,21	1.25	1 (5%)
1	OMY	A	6	1	12,14,15	1.35	1 (8%)	17,19,21	1.22	1 (5%)
1	GHP	B	4[A]	2	10,11,12	1.36	2 (20%)	11,14,16	0.92	0
1	GHP	B	5	1	10,11,12	1.98	3 (30%)	11,14,16	1.20	1 (9%)
1	MLU	B	1	1	7,8,9	1.24	0	6,9,11	1.03	1 (16%)

In the following table, the Chirals column lists the number of chiral outliers, the number of chiral centers analysed, the number of these observed in the model and the number defined in the Chemical Component Dictionary. Similar counts are reported in the Torsion and Rings columns. '-' means no outliers of that kind were identified.

Mol	Type	Chain	Res	Link	Chirals	Torsions	Rings
1	MLU	A	1	1	-	0/5/8/10	-
1	GHP	A	5	1	-	0/4/6/8	0/1/1/1
1	OMZ	B	2	1	-	1/9/10/12	0/1/1/1
1	GHP	B	4[B]	2	-	2/4/6/8	0/1/1/1
1	3FG	A	7	1	-	2/8/8/8	0/1/1/1
1	3FG	B	7	1	-	2/8/8/8	0/1/1/1
1	GHP	A	4	2,1	-	3/4/6/8	0/1/1/1
1	OMZ	A	2	1	-	1/9/10/12	0/1/1/1
1	OMY	B	6	1	-	1/9/10/12	0/1/1/1
1	OMY	A	6	1	-	1/9/10/12	0/1/1/1
1	GHP	B	4[A]	2	-	2/4/6/8	0/1/1/1
1	GHP	B	5	1	-	0/4/6/8	0/1/1/1
1	MLU	B	1	1	-	0/5/8/10	-

All (23) bond length outliers are listed below:

Mol	Chain	Res	Type	Atoms	Z	Observed(Å)	Ideal(Å)
1	B	4[B]	GHP	O4-C4	10.11	1.60	1.37
1	B	7	3FG	CG1-CD1	3.87	1.44	1.39
1	B	7	3FG	CB-CA	3.69	1.56	1.52
1	A	2	OMZ	OH-CZ	3.50	1.43	1.36
1	B	5	GHP	C3-C2	3.27	1.44	1.38
1	B	5	GHP	CA-C	3.07	1.57	1.51
1	A	7	3FG	CB-CA	3.05	1.56	1.52
1	A	7	3FG	CG1-CB	3.05	1.43	1.39
1	A	5	GHP	CA-C	2.94	1.57	1.51
1	B	4[A]	GHP	C1-CA	2.86	1.55	1.52
1	B	4[B]	GHP	C1-CA	2.86	1.55	1.52
1	B	5	GHP	C1-CA	2.68	1.55	1.52
1	A	4	GHP	C1-CA	2.67	1.55	1.52
1	B	2	OMZ	OH-CZ	2.58	1.41	1.36
1	A	6	OMY	OCZ-CZ	2.57	1.41	1.36
1	B	7	3FG	CA-C	2.55	1.61	1.54
1	A	5	GHP	C1-CA	2.39	1.55	1.52
1	B	7	3FG	CG1-CB	2.37	1.42	1.39
1	A	5	GHP	C3-C2	2.27	1.42	1.38
1	B	4[A]	GHP	CA-C	2.21	1.55	1.51
1	B	4[B]	GHP	CA-C	2.21	1.55	1.51
1	A	2	OMZ	CD1-CE1	2.13	1.42	1.38
1	A	7	3FG	CG2-CD2	2.04	1.42	1.39

All (13) bond angle outliers are listed below:

Mol	Chain	Res	Type	Atoms	Z	Observed(°)	Ideal(°)
1	A	2	OMZ	CD1-CE1-CZ	-5.18	117.91	120.91
1	B	6	OMY	CG-CB-CA	-4.08	106.03	111.49
1	A	6	OMY	CG-CB-CA	-4.06	106.05	111.49
1	B	7	3FG	CD1-CG1-CB	-3.27	117.31	120.11
1	A	5	GHP	C1-CA-N	3.14	119.91	112.40
1	A	2	OMZ	CE2-CZ-CE1	2.88	121.35	118.55
1	A	7	3FG	CD1-CG1-CB	-2.88	117.64	120.11
1	B	7	3FG	CD2-CG2-CB	2.71	122.44	120.11
1	B	2	OMZ	OC-CB-CA	-2.54	101.93	107.28
1	B	2	OMZ	O-C-CA	-2.37	118.56	124.78
1	B	5	GHP	C2-C3-C4	-2.36	117.28	119.88
1	B	1	MLU	O-C-CA	-2.23	118.94	124.78
1	A	2	OMZ	CE2-CD2-CG	-2.02	119.17	121.20

There are no chirality outliers.

All (15) torsion outliers are listed below:

Mol	Chain	Res	Type	Atoms
1	A	2	OMZ	O-C-CA-CB
1	A	6	OMY	O-C-CA-CB
1	B	6	OMY	O-C-CA-CB
1	A	7	3FG	C-CA-CB-CG1
1	A	7	3FG	C-CA-CB-CG2
1	B	7	3FG	C-CA-CB-CG1
1	B	7	3FG	C-CA-CB-CG2
1	A	4	GHP	C6-C1-CA-C
1	B	2	OMZ	O-C-CA-CB
1	A	4	GHP	C2-C1-CA-C
1	B	4[A]	GHP	C2-C1-CA-C
1	B	4[A]	GHP	C6-C1-CA-C
1	B	4[B]	GHP	C2-C1-CA-C
1	B	4[B]	GHP	C6-C1-CA-C
1	A	4	GHP	C2-C1-CA-N

There are no ring outliers.

2 monomers are involved in 1 short contact:

Mol	Chain	Res	Type	Clashes	Symm-Clashes
1	A	4	GHP	1	0
1	B	5	GHP	1	0

5.5 Carbohydrates i

5 monosaccharides are modelled in this entry.

In the following table, the Counts columns list the number of bonds (or angles) for which Mogul statistics could be retrieved, the number of bonds (or angles) that are observed in the model and the number of bonds (or angles) that are defined in the Chemical Component Dictionary. The Link column lists molecule types, if any, to which the group is linked. The Z score for a bond length (or angle) is the number of standard deviations the observed value is removed from the expected value. A bond length (or angle) with $|Z| > 2$ is considered an outlier worth inspection. RMSZ is the root-mean-square of all Z scores of the bond lengths (or angles).

Mol	Type	Chain	Res	Link	Bond lengths			Bond angles		
					Counts	RMSZ	# Z > 2	Counts	RMSZ	# Z > 2
2	BGC	C	1	2,1	11,11,12	1.62	4 (36%)	15,15,17	1.10	1 (6%)
2	RER	C	2	2	6,10,11	1.73	1 (16%)	6,15,17	2.00	1 (16%)
2	BGC	D	1[A]	2,1	11,11,12	1.44	2 (18%)	15,15,17	1.44	2 (13%)
2	BGC	D	1[B]	2,1	11,11,12	1.60	3 (27%)	15,15,17	4.28	3 (20%)
2	RER	D	2	2	6,10,11	1.86	3 (50%)	6,15,17	0.85	0

In the following table, the Chirals column lists the number of chiral outliers, the number of chiral centers analysed, the number of these observed in the model and the number defined in the Chemical Component Dictionary. Similar counts are reported in the Torsion and Rings columns. '-' means no outliers of that kind were identified.

Mol	Type	Chain	Res	Link	Chirals	Torsions	Rings
2	BGC	C	1	2,1	-	0/2/19/22	0/1/1/1
2	RER	C	2	2	-	-	0/1/1/1
2	BGC	D	1[A]	2,1	-	0/2/19/22	0/1/1/1
2	BGC	D	1[B]	2,1	1/1/4/5	2/2/19/22	0/1/1/1
2	RER	D	2	2	-	-	0/1/1/1

All (13) bond length outliers are listed below:

Mol	Chain	Res	Type	Atoms	Z	Observed(Å)	Ideal(Å)
2	C	2	RER	O4-C4	3.78	1.50	1.42
2	D	1[B]	BGC	O2-C2	2.86	1.49	1.43
2	D	2	RER	O4-C4	2.84	1.48	1.42
2	D	1[A]	BGC	O2-C2	2.80	1.49	1.43
2	C	1	BGC	C4-C3	2.64	1.59	1.52
2	D	2	RER	O5-C5	2.42	1.48	1.43
2	D	2	RER	C2-C1	2.42	1.58	1.51
2	D	1[A]	BGC	C4-C3	2.40	1.58	1.52
2	C	1	BGC	O2-C2	2.38	1.48	1.43

Continued on next page...

Continued from previous page...

Mol	Chain	Res	Type	Atoms	Z	Observed(Å)	Ideal(Å)
2	D	1[B]	BGC	C4-C5	2.18	1.57	1.53
2	C	1	BGC	C4-C5	2.18	1.57	1.53
2	D	1[B]	BGC	O3-C3	2.16	1.48	1.43
2	C	1	BGC	O3-C3	2.05	1.47	1.43

All (7) bond angle outliers are listed below:

Mol	Chain	Res	Type	Atoms	Z	Observed(°)	Ideal(°)
2	D	1[B]	BGC	O5-C5-C6	15.83	132.01	107.20
2	D	1[A]	BGC	C1-C2-C3	4.15	114.77	109.67
2	C	2	RER	O5-C1-C2	3.63	116.50	111.38
2	D	1[B]	BGC	C1-C2-C3	3.07	113.43	109.67
2	C	1	BGC	C1-C2-C3	2.82	113.13	109.67
2	D	1[B]	BGC	O2-C2-C3	-2.41	105.32	110.14
2	D	1[A]	BGC	O5-C5-C4	-2.31	105.20	110.83

All (1) chirality outliers are listed below:

Mol	Chain	Res	Type	Atom
2	D	1[B]	BGC	C5

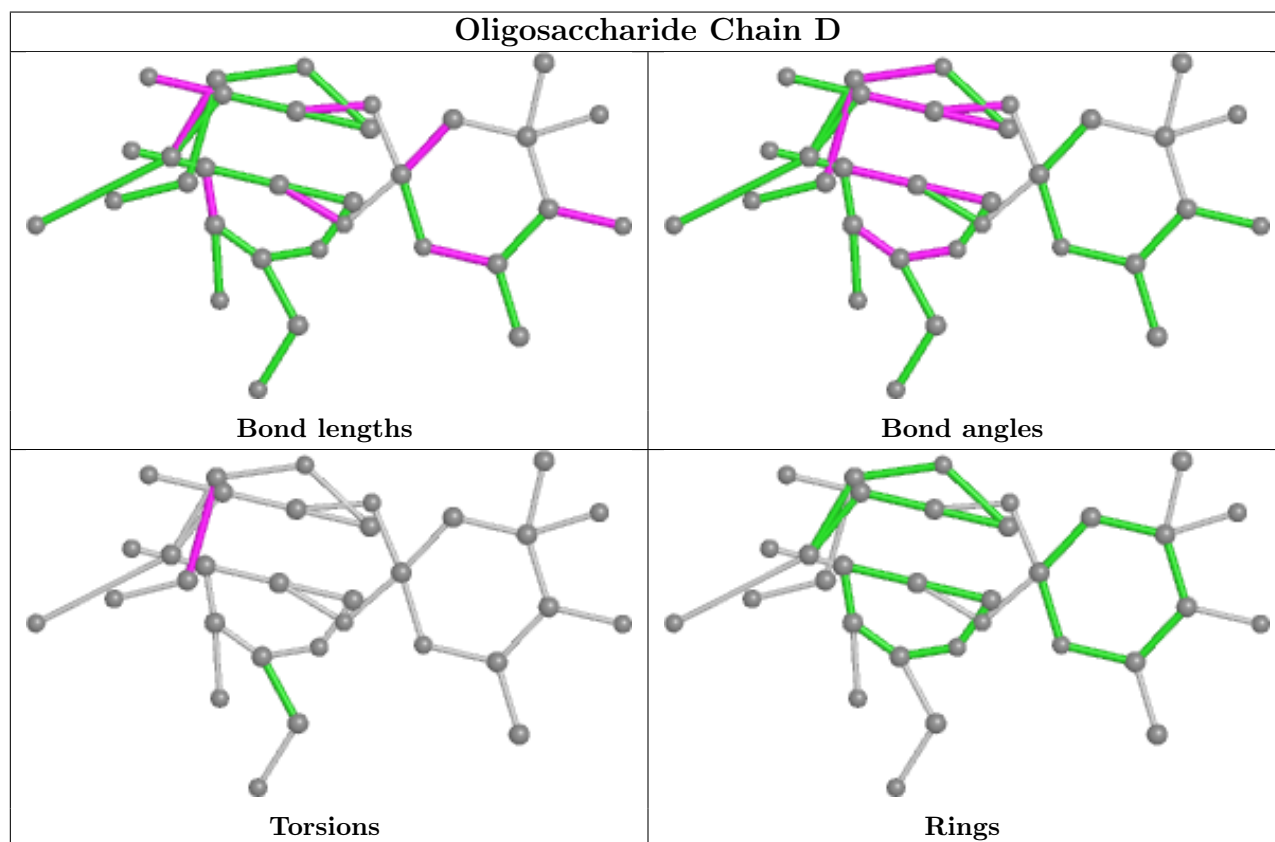
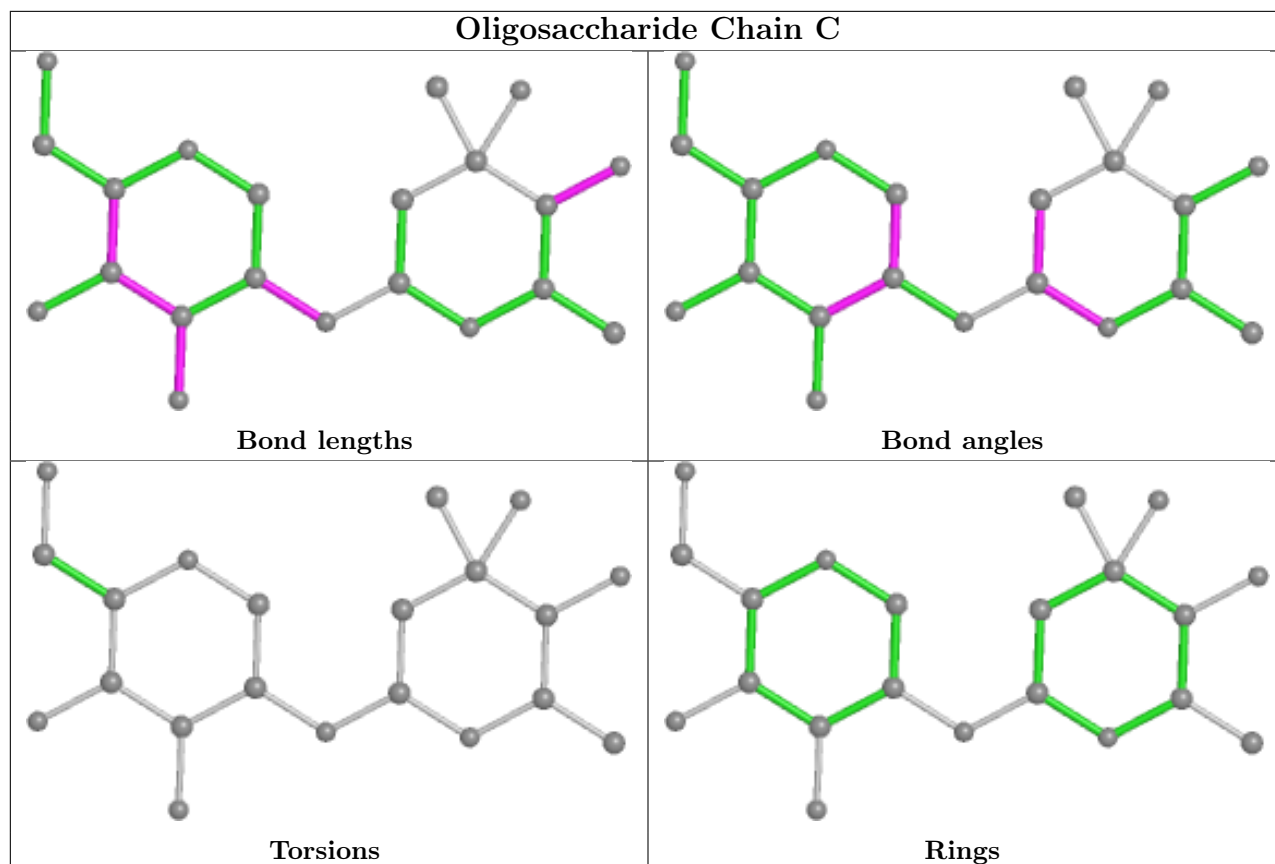
All (2) torsion outliers are listed below:

Mol	Chain	Res	Type	Atoms
2	D	1[B]	BGC	C4-C5-C6-O6
2	D	1[B]	BGC	O5-C5-C6-O6

There are no ring outliers.

No monomer is involved in short contacts.

The following is a two-dimensional graphical depiction of Mogul quality analysis of bond lengths, bond angles, torsion angles, and ring geometry for oligosaccharide.



5.6 Ligand geometry [i](#)

Of 4 ligands modelled in this entry, 3 are monoatomic - leaving 1 for Mogul analysis.

In the following table, the Counts columns list the number of bonds (or angles) for which Mogul statistics could be retrieved, the number of bonds (or angles) that are observed in the model and the number of bonds (or angles) that are defined in the Chemical Component Dictionary. The Link column lists molecule types, if any, to which the group is linked. The Z score for a bond length (or angle) is the number of standard deviations the observed value is removed from the expected value. A bond length (or angle) with $|Z| > 2$ is considered an outlier worth inspection. RMSZ is the root-mean-square of all Z scores of the bond lengths (or angles).

Mol	Type	Chain	Res	Link	Bond lengths			Bond angles		
					Counts	RMSZ	# Z > 2	Counts	RMSZ	# Z > 2
4	AAC	B	11	-	7,7,7	1.11	0	8,8,8	0.93	0

In the following table, the Chirals column lists the number of chiral outliers, the number of chiral centers analysed, the number of these observed in the model and the number defined in the Chemical Component Dictionary. Similar counts are reported in the Torsion and Rings columns. '-' means no outliers of that kind were identified.

Mol	Type	Chain	Res	Link	Chirals	Torsions	Rings
4	AAC	B	11	-	-	0/5/5/5	-

There are no bond length outliers.

There are no bond angle outliers.

There are no chirality outliers.

There are no torsion outliers.

There are no ring outliers.

No monomer is involved in short contacts.

5.7 Other polymers [i](#)

There are no such residues in this entry.

5.8 Polymer linkage issues [i](#)

There are no chain breaks in this entry.

6 Fit of model and data

6.1 Protein, DNA and RNA chains

EDS was not executed - this section is therefore empty.

6.2 Non-standard residues in protein, DNA, RNA chains

EDS was not executed - this section is therefore empty.

6.3 Carbohydrates

EDS was not executed - this section is therefore empty.

6.4 Ligands

EDS was not executed - this section is therefore empty.

6.5 Other polymers

EDS was not executed - this section is therefore empty.