



# Full wwPDB X-ray Structure Validation Report ⓘ

Mar 10, 2024 – 08:57 AM EDT

PDB ID : 4QDI  
Title : Crystal structure II of MurF from *Acinetobacter baumannii*  
Authors : An, Y.J.; Jeong, C.S.; Cha, S.S.  
Deposited on : 2014-05-13  
Resolution : 1.80 Å(reported)

This is a Full wwPDB X-ray Structure Validation Report for a publicly released PDB entry.

We welcome your comments at [validation@mail.wwpdb.org](mailto:validation@mail.wwpdb.org)

A user guide is available at

<https://www.wwpdb.org/validation/2017/XrayValidationReportHelp>

with specific help available everywhere you see the ⓘ symbol.

The types of validation reports are described at

<http://www.wwpdb.org/validation/2017/FAQs#types>.

---

The following versions of software and data (see [references ⓘ](#)) were used in the production of this report:

MolProbity : 4.02b-467  
Mogul : 1.8.5 (274361), CSD as541be (2020)  
Xtriage (Phenix) : 1.13  
EDS : 2.36  
buster-report : 1.1.7 (2018)  
Percentile statistics : 20191225.v01 (using entries in the PDB archive December 25th 2019)  
Refmac : 5.8.0158  
CCP4 : 7.0.044 (Gargrove)  
Ideal geometry (proteins) : Engh & Huber (2001)  
Ideal geometry (DNA, RNA) : Parkinson et al. (1996)  
Validation Pipeline (wwPDB-VP) : 2.36

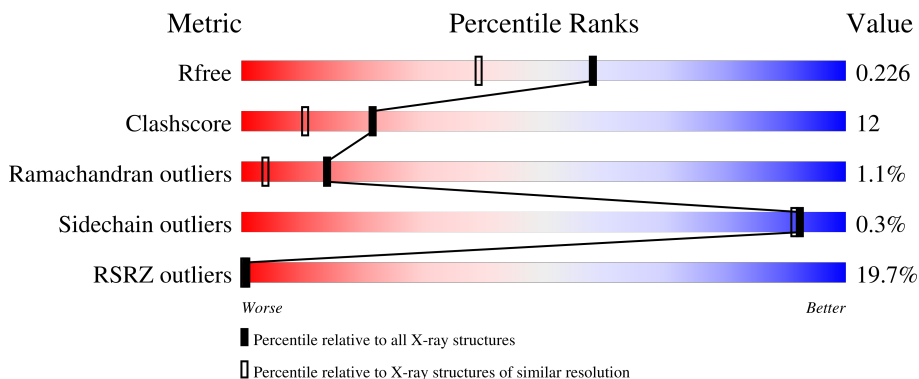
# 1 Overall quality at a glance

The following experimental techniques were used to determine the structure:

*X-RAY DIFFRACTION*

The reported resolution of this entry is 1.80 Å.

Percentile scores (ranging between 0-100) for global validation metrics of the entry are shown in the following graphic. The table shows the number of entries on which the scores are based.



Metric	Whole archive (#Entries)	Similar resolution (#Entries, resolution range(Å))
$R_{free}$	130704	5950 (1.80-1.80)
Clashscore	141614	6793 (1.80-1.80)
Ramachandran outliers	138981	6697 (1.80-1.80)
Sidechain outliers	138945	6696 (1.80-1.80)
RSRZ outliers	127900	5850 (1.80-1.80)

The table below summarises the geometric issues observed across the polymeric chains and their fit to the electron density. The red, orange, yellow and green segments of the lower bar indicate the fraction of residues that contain outliers for  $\geq 3$ , 2, 1 and 0 types of geometric quality criteria respectively. A grey segment represents the fraction of residues that are not modelled. The numeric value for each fraction is indicated below the corresponding segment, with a dot representing fractions  $\leq 5\%$ . The upper red bar (where present) indicates the fraction of residues that have poor fit to the electron density. The numeric value is given above the bar.

Mol	Chain	Length	Quality of chain
1	A	472	

## 2 Entry composition [i](#)

There are 6 unique types of molecules in this entry. The entry contains 3774 atoms, of which 0 are hydrogens and 0 are deuteriums.

In the tables below, the ZeroOcc column contains the number of atoms modelled with zero occupancy, the AltConf column contains the number of residues with at least one atom in alternate conformation and the Trace column contains the number of residues modelled with at most 2 atoms.

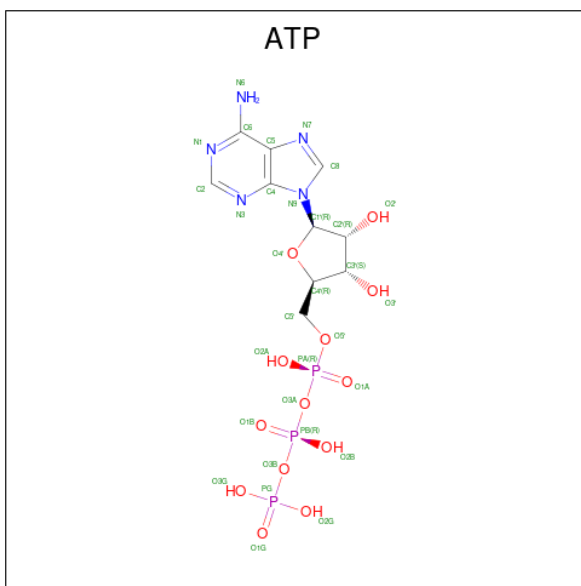
- Molecule 1 is a protein called UDP-N-acetylmuramoyl-tripeptide--D-alanyl-D-alanine ligase.

Mol	Chain	Residues	Atoms					ZeroOcc	AltConf	Trace
			Total	C	N	O	S			
1	A	457	3444	2164	619	647	14	0	0	0

There are 6 discrepancies between the modelled and reference sequences:

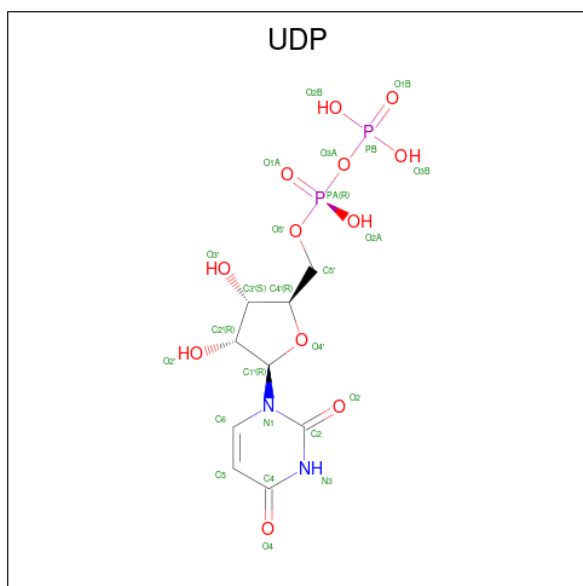
Chain	Residue	Modelled	Actual	Comment	Reference
A	-5	HIS	-	expression tag	UNP B7GVN5
A	-4	HIS	-	expression tag	UNP B7GVN5
A	-3	HIS	-	expression tag	UNP B7GVN5
A	-2	HIS	-	expression tag	UNP B7GVN5
A	-1	HIS	-	expression tag	UNP B7GVN5
A	0	HIS	-	expression tag	UNP B7GVN5

- Molecule 2 is ADENOSINE-5'-TRIPHOSPHATE (three-letter code: ATP) (formula:  $C_{10}H_{16}N_5O_{13}P_3$ ).



Mol	Chain	Residues	Atoms					ZeroOcc	AltConf
			Total	C	N	O	P		
2	A	1	31	10	5	13	3	0	0

- Molecule 3 is URIDINE-5'-DIPHOSPHATE (three-letter code: UDP) (formula:  $C_9H_{14}N_2O_{12}P_2$ ).



Mol	Chain	Residues	Atoms					ZeroOcc	AltConf
			Total	C	N	O	P		
3	A	1	25	9	2	12	2	0	0

- Molecule 4 is MAGNESIUM ION (three-letter code: MG) (formula: Mg).

Mol	Chain	Residues	Atoms		ZeroOcc	AltConf
			Total	Mg		
4	A	1	1	1	0	0

- Molecule 5 is 1,2-ETHANEDIOL (three-letter code: EDO) (formula:  $C_2H_6O_2$ ).



Mol	Chain	Residues	Atoms	ZeroOcc	AltConf
5	A	1	Total C O 4 2 2	0	0
5	A	1	Total C O 4 2 2	0	0

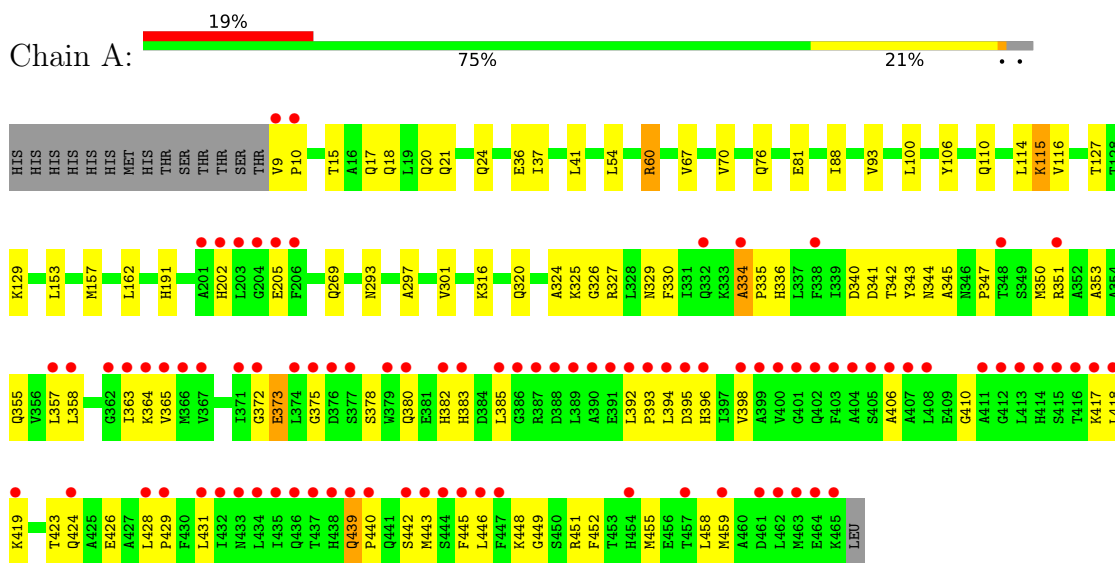
- Molecule 6 is water.

Mol	Chain	Residues	Atoms	ZeroOcc	AltConf
6	A	265	Total O 265 265	0	0

### 3 Residue-property plots [i](#)

These plots are drawn for all protein, RNA, DNA and oligosaccharide chains in the entry. The first graphic for a chain summarises the proportions of the various outlier classes displayed in the second graphic. The second graphic shows the sequence view annotated by issues in geometry and electron density. Residues are color-coded according to the number of geometric quality criteria for which they contain at least one outlier: green = 0, yellow = 1, orange = 2 and red = 3 or more. A red dot above a residue indicates a poor fit to the electron density ( $RSRZ > 2$ ). Stretches of 2 or more consecutive residues without any outlier are shown as a green connector. Residues present in the sample, but not in the model, are shown in grey.

- Molecule 1: UDP-N-acetylmuramoyl-tripeptide--D-alanyl-D-alanine ligase



## 4 Data and refinement statistics i

Property	Value	Source
Space group	P 32 2 1	Depositor
Cell constants a, b, c, $\alpha$ , $\beta$ , $\gamma$	85.78Å 85.78Å 130.20Å 90.00° 90.00° 120.00°	Depositor
Resolution (Å)	37.48 – 1.80 37.47 – 1.80	Depositor EDS
% Data completeness (in resolution range)	97.2 (37.48-1.80) 97.2 (37.47-1.80)	Depositor EDS
$R_{merge}$	(Not available)	Depositor
$R_{sym}$	(Not available)	Depositor
$\langle I/\sigma(I) \rangle$ <sup>1</sup>	4.46 (at 1.81Å)	Xtrriage
Refinement program	CNS 1.3	Depositor
R, $R_{free}$	0.227 , 0.253 0.224 , 0.226	Depositor DCC
$R_{free}$ test set	2585 reflections (5.11%)	wwPDB-VP
Wilson B-factor (Å <sup>2</sup> )	23.1	Xtrriage
Anisotropy	0.593	Xtrriage
Bulk solvent $k_{sol}$ (e/Å <sup>3</sup> ), $B_{sol}$ (Å <sup>2</sup> )	0.33 , 47.4	EDS
L-test for twinning <sup>2</sup>	$\langle  L  \rangle = 0.48$ , $\langle L^2 \rangle = 0.31$	Xtrriage
Estimated twinning fraction	0.026 for -h,-k,l	Xtrriage
$F_o, F_c$ correlation	0.94	EDS
Total number of atoms	3774	wwPDB-VP
Average B, all atoms (Å <sup>2</sup> )	41.0	wwPDB-VP

Xtrriage's analysis on translational NCS is as follows: *The largest off-origin peak in the Patterson function is 3.69% of the height of the origin peak. No significant pseudotranslation is detected.*

<sup>1</sup>Intensities estimated from amplitudes.

<sup>2</sup>Theoretical values of  $\langle |L| \rangle$ ,  $\langle L^2 \rangle$  for acentric reflections are 0.5, 0.333 respectively for untwinned datasets, and 0.375, 0.2 for perfectly twinned datasets.

## 5 Model quality [i](#)

### 5.1 Standard geometry [i](#)

Bond lengths and bond angles in the following residue types are not validated in this section: UDP, ATP, MG, EDO

The Z score for a bond length (or angle) is the number of standard deviations the observed value is removed from the expected value. A bond length (or angle) with  $|Z| > 5$  is considered an outlier worth inspection. RMSZ is the root-mean-square of all Z scores of the bond lengths (or angles).

Mol	Chain	Bond lengths		Bond angles	
		RMSZ	# Z  >5	RMSZ	# Z  >5
1	A	0.30	0/3508	0.57	2/4756 (0.0%)

There are no bond length outliers.

All (2) bond angle outliers are listed below:

Mol	Chain	Res	Type	Atoms	Z	Observed(°)	Ideal(°)
1	A	347	PRO	N-CA-CB	5.44	109.83	103.30
1	A	115	LYS	N-CA-C	-5.18	97.01	111.00

There are no chirality outliers.

There are no planarity outliers.

### 5.2 Too-close contacts [i](#)

In the following table, the Non-H and H(model) columns list the number of non-hydrogen atoms and hydrogen atoms in the chain respectively. The H(added) column lists the number of hydrogen atoms added and optimized by MolProbity. The Clashes column lists the number of clashes within the asymmetric unit, whereas Symm-Clashes lists symmetry-related clashes.

Mol	Chain	Non-H	H(model)	H(added)	Clashes	Symm-Clashes
1	A	3444	0	3357	82	0
2	A	31	0	12	0	0
3	A	25	0	11	0	0
4	A	1	0	0	0	0
5	A	8	0	8	0	0
6	A	265	0	0	1	0
All	All	3774	0	3388	82	0

The all-atom clashscore is defined as the number of clashes found per 1000 atoms (including



hydrogen atoms). The all-atom clashscore for this structure is 12.

All (82) close contacts within the same asymmetric unit are listed below, sorted by their clash magnitude.

Atom-1	Atom-2	Interatomic distance (Å)	Clash overlap (Å)
1:A:334:ALA:HB1	1:A:335:PRO:HD2	1.46	0.95
1:A:116:VAL:H	1:A:191:HIS:HD2	1.25	0.85
1:A:365:VAL:HG12	1:A:396:HIS:HB2	1.62	0.81
1:A:17:GLN:HG2	1:A:21:GLN:HE21	1.48	0.79
1:A:341:ASP:O	1:A:448:LYS:HD2	1.85	0.75
1:A:355:GLN:NE2	1:A:358:LEU:HD12	2.03	0.72
1:A:334:ALA:HB1	1:A:335:PRO:CD	2.19	0.71
1:A:350:MET:HG2	1:A:385:LEU:HD21	1.73	0.70
1:A:363:ILE:HB	1:A:443:MET:HG2	1.74	0.69
1:A:36:GLU:HG2	6:A:813:HOH:O	1.93	0.69
1:A:428:LEU:HB3	1:A:429:PRO:HD3	1.78	0.65
1:A:448:LYS:HG3	1:A:449:GLY:H	1.61	0.64
1:A:358:LEU:HD23	1:A:364:LYS:HD3	1.79	0.64
1:A:334:ALA:CB	1:A:335:PRO:HD2	2.26	0.64
1:A:202:HIS:HB2	1:A:205:GLU:HB2	1.79	0.63
1:A:326:GLY:H	1:A:329:ASN:ND2	1.98	0.61
1:A:116:VAL:H	1:A:191:HIS:CD2	2.12	0.60
1:A:269:GLN:HG2	1:A:330:PHE:CD2	2.35	0.60
1:A:353:ALA:HB1	1:A:446:LEU:HD21	1.83	0.60
1:A:372:GLY:HA3	1:A:452:PHE:HE2	1.69	0.58
1:A:17:GLN:CG	1:A:21:GLN:HE21	2.15	0.58
1:A:153:LEU:O	1:A:157:MET:HG3	2.05	0.57
1:A:439:GLN:CB	1:A:440:PRO:HD2	2.34	0.57
1:A:424:GLN:HB3	1:A:458:LEU:HD13	1.87	0.57
1:A:343:TYR:O	1:A:451:ARG:HD2	2.05	0.55
1:A:395:ASP:O	1:A:417:LYS:HG3	2.06	0.55
1:A:357:LEU:HB2	1:A:446:LEU:HD22	1.90	0.53
1:A:340:ASP:HB2	1:A:459:MET:CE	2.39	0.53
1:A:448:LYS:O	1:A:455:MET:HG3	2.08	0.53
1:A:344:ASN:O	1:A:448:LYS:HE2	2.10	0.51
1:A:372:GLY:O	1:A:373:GLU:HB2	2.11	0.51
1:A:380:GLN:HE21	1:A:380:GLN:HA	1.76	0.50
1:A:365:VAL:HG23	1:A:365:VAL:O	2.11	0.50
1:A:37:ILE:N	1:A:37:ILE:HD12	2.27	0.50
1:A:325:LYS:HA	1:A:329:ASN:HD21	1.76	0.49
1:A:418:LEU:HD23	1:A:419:LYS:N	2.27	0.49
1:A:106:TYR:O	1:A:110:GLN:HG2	2.13	0.49
1:A:357:LEU:HD13	1:A:446:LEU:HB2	1.96	0.48

*Continued on next page...*

*Continued from previous page...*

Atom-1	Atom-2	Interatomic distance (Å)	Clash overlap (Å)
1:A:355:GLN:HE21	1:A:355:GLN:HA	1.77	0.48
1:A:41:LEU:HD23	1:A:41:LEU:H	1.78	0.48
1:A:383:HIS:O	1:A:410:GLY:HA3	2.13	0.48
1:A:431:LEU:HD12	1:A:445:PHE:HE1	1.79	0.48
1:A:9:VAL:HA	1:A:10:PRO:O	2.14	0.48
1:A:60:ARG:HG2	1:A:60:ARG:HH11	1.78	0.48
1:A:334:ALA:CB	1:A:335:PRO:CD	2.89	0.48
1:A:378:SER:O	1:A:382:HIS:ND1	2.47	0.47
1:A:269:GLN:HG2	1:A:330:PHE:CE2	2.48	0.47
1:A:326:GLY:H	1:A:329:ASN:HD21	1.61	0.47
1:A:334:ALA:C	1:A:336:HIS:H	2.18	0.47
1:A:335:PRO:O	1:A:442:SER:HA	2.15	0.47
1:A:392:LEU:C	1:A:394:LEU:H	2.18	0.47
1:A:76:GLN:C	1:A:88:ILE:HG13	2.35	0.47
1:A:355:GLN:NE2	1:A:355:GLN:HA	2.30	0.46
1:A:67:VAL:O	1:A:70:VAL:HG22	2.16	0.46
1:A:423:THR:HG23	1:A:426:GLU:H	1.80	0.46
1:A:380:GLN:HA	1:A:380:GLN:NE2	2.31	0.46
1:A:81:GLU:HA	1:A:93:VAL:O	2.16	0.46
1:A:355:GLN:HE22	1:A:358:LEU:HD12	1.78	0.45
1:A:351:ARG:NH1	1:A:385:LEU:HD13	2.32	0.45
1:A:15:THR:OG1	1:A:18:GLN:HG3	2.15	0.45
1:A:54:LEU:HD21	1:A:100:LEU:HB2	1.99	0.44
1:A:316:LYS:O	1:A:320:GLN:HG2	2.17	0.44
1:A:297:ALA:O	1:A:301:VAL:HG23	2.18	0.44
1:A:324:ALA:HB3	1:A:327:ARG:HD3	1.99	0.44
1:A:365:VAL:HA	1:A:396:HIS:O	2.17	0.43
1:A:114:LEU:HD11	1:A:162:LEU:HD22	2.00	0.43
1:A:9:VAL:HA	1:A:10:PRO:C	2.39	0.43
1:A:383:HIS:HA	1:A:406:ALA:O	2.17	0.43
1:A:365:VAL:CG1	1:A:396:HIS:HB2	2.41	0.43
1:A:345:ALA:HB2	1:A:448:LYS:HG3	2.01	0.43
1:A:351:ARG:NH2	1:A:385:LEU:HA	2.34	0.43
1:A:342:THR:O	1:A:343:TYR:C	2.57	0.42
1:A:439:GLN:CB	1:A:440:PRO:CD	2.97	0.42
1:A:115:LYS:HD3	1:A:115:LYS:HA	1.89	0.42
1:A:398:VAL:HG11	1:A:431:LEU:HD21	2.00	0.41
1:A:418:LEU:HD23	1:A:418:LEU:C	2.40	0.41
1:A:372:GLY:O	1:A:373:GLU:CB	2.68	0.41
1:A:398:VAL:HG21	1:A:431:LEU:HD11	2.02	0.41
1:A:448:LYS:HG3	1:A:449:GLY:N	2.32	0.41

*Continued on next page...*

Continued from previous page...

Atom-1	Atom-2	Interatomic distance (Å)	Clash overlap (Å)
1:A:20:GLN:O	1:A:24:GLN:N	2.53	0.41
1:A:129:LYS:HB3	1:A:129:LYS:HE3	1.81	0.41
1:A:127:THR:HG21	1:A:293:ASN:OD1	2.21	0.40

There are no symmetry-related clashes.

## 5.3 Torsion angles [i](#)

### 5.3.1 Protein backbone [i](#)

In the following table, the Percentiles column shows the percent Ramachandran outliers of the chain as a percentile score with respect to all X-ray entries followed by that with respect to entries of similar resolution.

The Analysed column shows the number of residues for which the backbone conformation was analysed, and the total number of residues.

Mol	Chain	Analysed	Favoured	Allowed	Outliers	Percentiles
1	A	455/472 (96%)	426 (94%)	24 (5%)	5 (1%)	14   4

All (5) Ramachandran outliers are listed below:

Mol	Chain	Res	Type
1	A	373	GLU
1	A	334	ALA
1	A	375	GLY
1	A	439	GLN
1	A	393	PRO

### 5.3.2 Protein sidechains [i](#)

In the following table, the Percentiles column shows the percent sidechain outliers of the chain as a percentile score with respect to all X-ray entries followed by that with respect to entries of similar resolution.

The Analysed column shows the number of residues for which the sidechain conformation was analysed, and the total number of residues.

Mol	Chain	Analysed	Rotameric	Outliers	Percentiles
1	A	347/382 (91%)	346 (100%)	1 (0%)	92   91

All (1) residues with a non-rotameric sidechain are listed below:

Mol	Chain	Res	Type
1	A	60	ARG

Sometimes sidechains can be flipped to improve hydrogen bonding and reduce clashes. All (10) such sidechains are listed below:

Mol	Chain	Res	Type
1	A	21	GLN
1	A	65	ASN
1	A	73	ASN
1	A	191	HIS
1	A	272	ASN
1	A	329	ASN
1	A	355	GLN
1	A	361	ASN
1	A	380	GLN
1	A	424	GLN

### 5.3.3 RNA [i](#)

There are no RNA molecules in this entry.

## 5.4 Non-standard residues in protein, DNA, RNA chains [i](#)

There are no non-standard protein/DNA/RNA residues in this entry.

## 5.5 Carbohydrates [i](#)

There are no monosaccharides in this entry.

## 5.6 Ligand geometry [i](#)

Of 5 ligands modelled in this entry, 1 is monoatomic - leaving 4 for Mogul analysis.

In the following table, the Counts columns list the number of bonds (or angles) for which Mogul statistics could be retrieved, the number of bonds (or angles) that are observed in the model and the number of bonds (or angles) that are defined in the Chemical Component Dictionary. The Link column lists molecule types, if any, to which the group is linked. The Z score for a bond length (or angle) is the number of standard deviations the observed value is removed from the expected value. A bond length (or angle) with  $|Z| > 2$  is considered an outlier worth inspection. RMSZ is the root-mean-square of all Z scores of the bond lengths (or angles).

Mol	Type	Chain	Res	Link	Bond lengths			Bond angles		
					Counts	RMSZ	# Z  > 2	Counts	RMSZ	# Z  > 2
5	EDO	A	504	-	3,3,3	1.80	1 (33%)	2,2,2	1.45	0
3	UDP	A	502	-	24,26,26	1.31	3 (12%)	37,40,40	1.33	4 (10%)
5	EDO	A	505	-	3,3,3	1.77	1 (33%)	2,2,2	1.47	0
2	ATP	A	501	4	26,33,33	1.32	4 (15%)	31,52,52	2.43	8 (25%)

In the following table, the Chirals column lists the number of chiral outliers, the number of chiral centers analysed, the number of these observed in the model and the number defined in the Chemical Component Dictionary. Similar counts are reported in the Torsion and Rings columns. '-' means no outliers of that kind were identified.

Mol	Type	Chain	Res	Link	Chirals	Torsions	Rings
5	EDO	A	504	-	-	0/1/1/1	-
3	UDP	A	502	-	-	0/16/32/32	0/2/2/2
5	EDO	A	505	-	-	1/1/1/1	-
2	ATP	A	501	4	-	0/18/38/38	0/3/3/3

All (9) bond length outliers are listed below:

Mol	Chain	Res	Type	Atoms	Z	Observed(Å)	Ideal(Å)
3	A	502	UDP	C2-N1	3.76	1.44	1.38
2	A	501	ATP	O4'-C1'	3.48	1.45	1.41
3	A	502	UDP	O2-C2	3.47	1.29	1.23
2	A	501	ATP	C5-C4	2.97	1.48	1.40
5	A	504	EDO	O2-C2	-2.44	1.29	1.42
5	A	505	EDO	O2-C2	-2.35	1.29	1.42
2	A	501	ATP	C8-N7	2.14	1.38	1.34
3	A	502	UDP	C6-C5	2.14	1.40	1.35
2	A	501	ATP	PA-O1A	2.04	1.58	1.50

All (12) bond angle outliers are listed below:

Mol	Chain	Res	Type	Atoms	Z	Observed(°)	Ideal(°)
2	A	501	ATP	C3'-C2'-C1'	6.48	110.74	100.98
2	A	501	ATP	N3-C2-N1	-5.53	120.04	128.68
2	A	501	ATP	C2-N1-C6	5.49	128.14	118.75
2	A	501	ATP	C1'-N9-C4	-5.19	117.53	126.64
3	A	502	UDP	C5-C4-N3	4.44	121.47	114.84
2	A	501	ATP	PB-O3B-PG	-3.65	120.29	132.83
3	A	502	UDP	C4-N3-C2	-3.22	122.34	126.58
3	A	502	UDP	O4-C4-C5	-2.73	120.37	125.16
3	A	502	UDP	PA-O3A-PB	-2.52	124.18	132.83

*Continued on next page...*

*Continued from previous page...*

Mol	Chain	Res	Type	Atoms	Z	Observed(°)	Ideal(°)
2	A	501	ATP	C5-C6-N6	2.42	124.04	120.35
2	A	501	ATP	O4'-C1'-C2'	-2.42	103.39	106.93
2	A	501	ATP	O2B-PB-O1B	2.34	123.80	112.24

There are no chirality outliers.

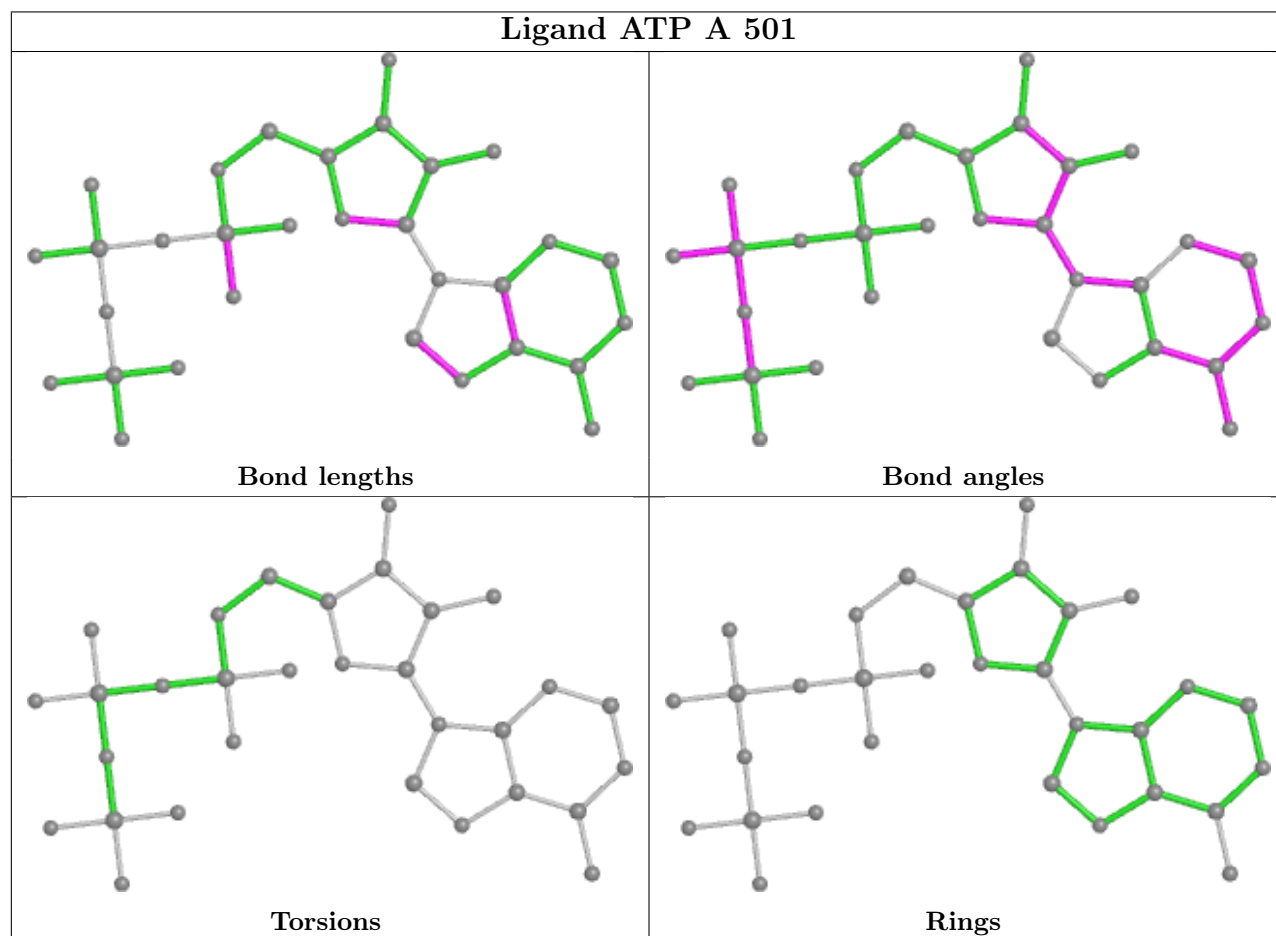
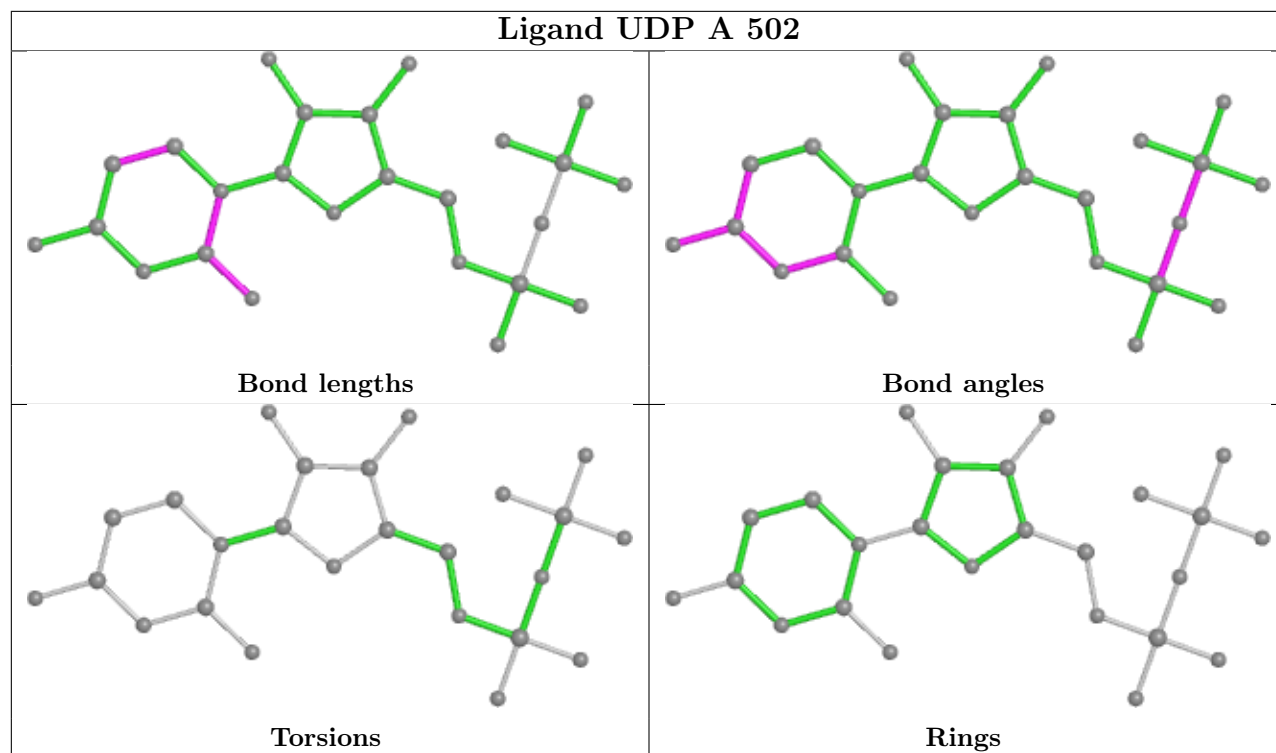
All (1) torsion outliers are listed below:

Mol	Chain	Res	Type	Atoms
5	A	505	EDO	O1-C1-C2-O2

There are no ring outliers.

No monomer is involved in short contacts.

The following is a two-dimensional graphical depiction of Mogul quality analysis of bond lengths, bond angles, torsion angles, and ring geometry for all instances of the Ligand of Interest. In addition, ligands with molecular weight > 250 and outliers as shown on the validation Tables will also be included. For torsion angles, if less than 5% of the Mogul distribution of torsion angles is within 10 degrees of the torsion angle in question, then that torsion angle is considered an outlier. Any bond that is central to one or more torsion angles identified as an outlier by Mogul will be highlighted in the graph. For rings, the root-mean-square deviation (RMSD) between the ring in question and similar rings identified by Mogul is calculated over all ring torsion angles. If the average RMSD is greater than 60 degrees and the minimal RMSD between the ring in question and any Mogul-identified rings is also greater than 60 degrees, then that ring is considered an outlier. The outliers are highlighted in purple. The color gray indicates Mogul did not find sufficient equivalents in the CSD to analyse the geometry.



## 5.7 Other polymers [i](#)

There are no such residues in this entry.

## 5.8 Polymer linkage issues [i](#)

There are no chain breaks in this entry.



## 6 Fit of model and data

### 6.1 Protein, DNA and RNA chains

In the following table, the column labelled ‘#RSRZ> 2’ contains the number (and percentage) of RSRZ outliers, followed by percent RSRZ outliers for the chain as percentile scores relative to all X-ray entries and entries of similar resolution. The OWAB column contains the minimum, median, 95<sup>th</sup> percentile and maximum values of the occupancy-weighted average B-factor per residue. The column labelled ‘Q< 0.9’ lists the number of (and percentage) of residues with an average occupancy less than 0.9.

Mol	Chain	Analysed	<RSRZ>	#RSRZ>2	OWAB(Å <sup>2</sup> )	Q<0.9
1	A	457/472 (96%)	0.81	90 (19%) <b>1</b> <b>0</b>	14, 28, 100, 109	0

All (90) RSRZ outliers are listed below:

Mol	Chain	Res	Type	RSRZ
1	A	399	ALA	10.6
1	A	413	LEU	10.5
1	A	374	LEU	10.1
1	A	431	LEU	9.7
1	A	412	GLY	8.1
1	A	392	LEU	7.9
1	A	379	TRP	7.5
1	A	414	HIS	7.2
1	A	376	ASP	6.9
1	A	203	LEU	6.8
1	A	415	SER	6.8
1	A	375	GLY	6.7
1	A	411	ALA	6.6
1	A	416	THR	5.8
1	A	402	GLN	5.7
1	A	418	LEU	5.7
1	A	390	ALA	5.5
1	A	383	HIS	5.5
1	A	385	LEU	5.5
1	A	365	VAL	5.2
1	A	445	PHE	5.1
1	A	435	ILE	5.0
1	A	438	HIS	5.0
1	A	419	LYS	4.9
1	A	367	VAL	4.8
1	A	406	ALA	4.7
1	A	387	ARG	4.5

*Continued on next page...*

*Continued from previous page...*

<b>Mol</b>	<b>Chain</b>	<b>Res</b>	<b>Type</b>	<b>RSRZ</b>
1	A	403	PHE	4.5
1	A	463	MET	4.5
1	A	204	GLY	4.3
1	A	434	LEU	4.2
1	A	461	ASP	4.2
1	A	396	HIS	4.1
1	A	394	LEU	4.1
1	A	358	LEU	4.1
1	A	202	HIS	4.0
1	A	404	ALA	4.0
1	A	442	SER	4.0
1	A	429	PRO	3.9
1	A	206	PHE	3.8
1	A	440	PRO	3.8
1	A	364	LYS	3.8
1	A	401	GLY	3.7
1	A	334	ALA	3.7
1	A	351	ARG	3.7
1	A	338	PHE	3.7
1	A	348	THR	3.6
1	A	395	ASP	3.6
1	A	372	GLY	3.6
1	A	398	VAL	3.6
1	A	393	PRO	3.5
1	A	388	ASP	3.4
1	A	433	ASN	3.3
1	A	386	GLY	3.3
1	A	428	LEU	3.3
1	A	443	MET	3.3
1	A	432	ILE	3.2
1	A	464	GLU	3.1
1	A	437	THR	3.1
1	A	457	THR	3.1
1	A	447	PHE	3.0
1	A	371	ILE	2.9
1	A	400	VAL	2.9
1	A	446	LEU	2.9
1	A	405	SER	2.9
1	A	408	LEU	2.8
1	A	9	VAL	2.8
1	A	465	LYS	2.8
1	A	366	MET	2.8

*Continued on next page...*

*Continued from previous page...*

Mol	Chain	Res	Type	RSRZ
1	A	424	GLN	2.8
1	A	439	GLN	2.8
1	A	362	GLY	2.7
1	A	391	GLU	2.7
1	A	10	PRO	2.7
1	A	459	MET	2.6
1	A	363	ILE	2.6
1	A	332	GLN	2.6
1	A	205	GLU	2.5
1	A	462	LEU	2.4
1	A	454	HIS	2.4
1	A	201	ALA	2.3
1	A	382	HIS	2.3
1	A	417	LYS	2.3
1	A	444	SER	2.3
1	A	389	LEU	2.3
1	A	380	GLN	2.2
1	A	407	ALA	2.2
1	A	377	SER	2.1
1	A	357	LEU	2.1
1	A	436	GLN	2.1

## 6.2 Non-standard residues in protein, DNA, RNA chains [i](#)

There are no non-standard protein/DNA/RNA residues in this entry.

## 6.3 Carbohydrates [i](#)

There are no monosaccharides in this entry.

## 6.4 Ligands [i](#)

In the following table, the Atoms column lists the number of modelled atoms in the group and the number defined in the chemical component dictionary. The B-factors column lists the minimum, median, 95<sup>th</sup> percentile and maximum values of B factors of atoms in the group. The column labelled 'Q< 0.9' lists the number of atoms with occupancy less than 0.9.

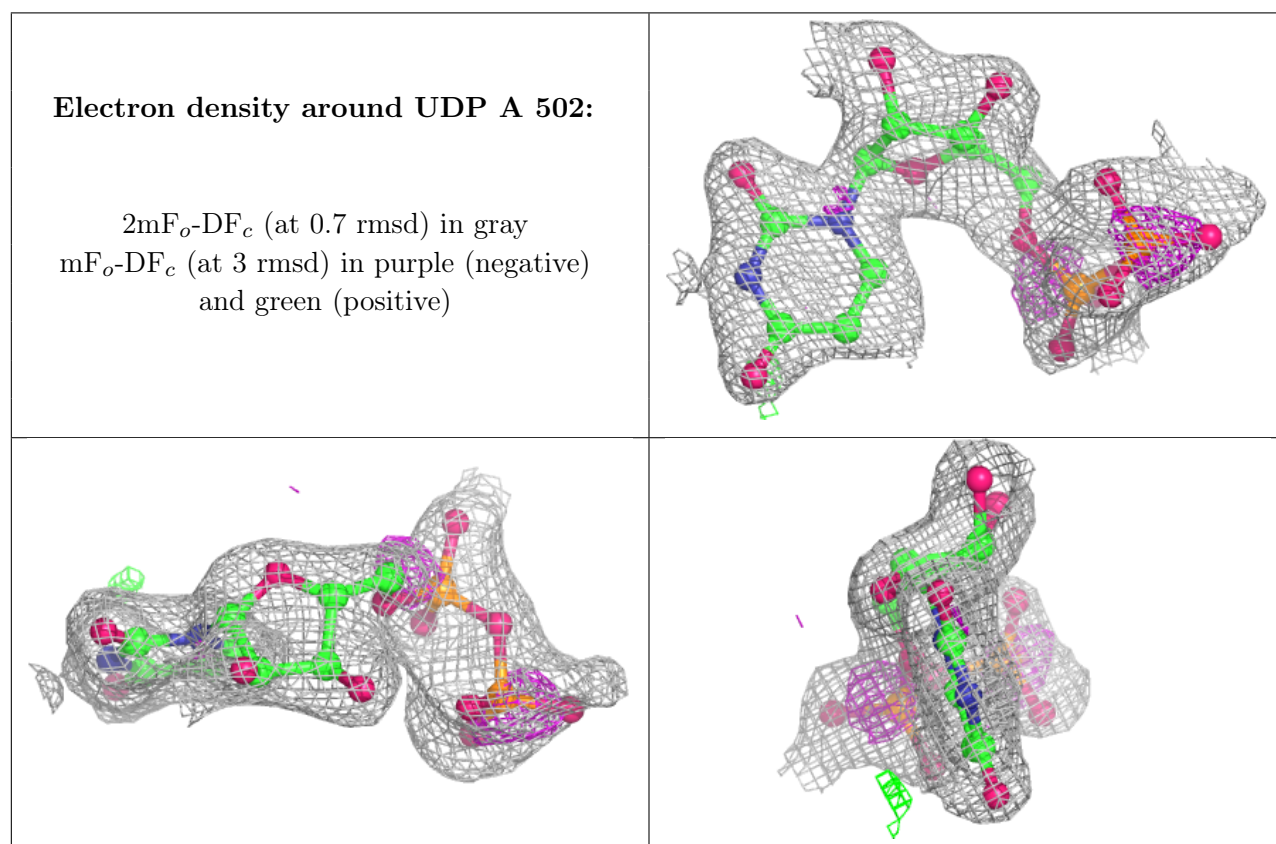
Mol	Type	Chain	Res	Atoms	RSCC	RSR	B-factors(Å <sup>2</sup> )	Q<0.9
4	MG	A	503	1/1	0.70	0.14	51,51,51,51	0
3	UDP	A	502	25/25	0.87	0.14	39,48,66,66	0

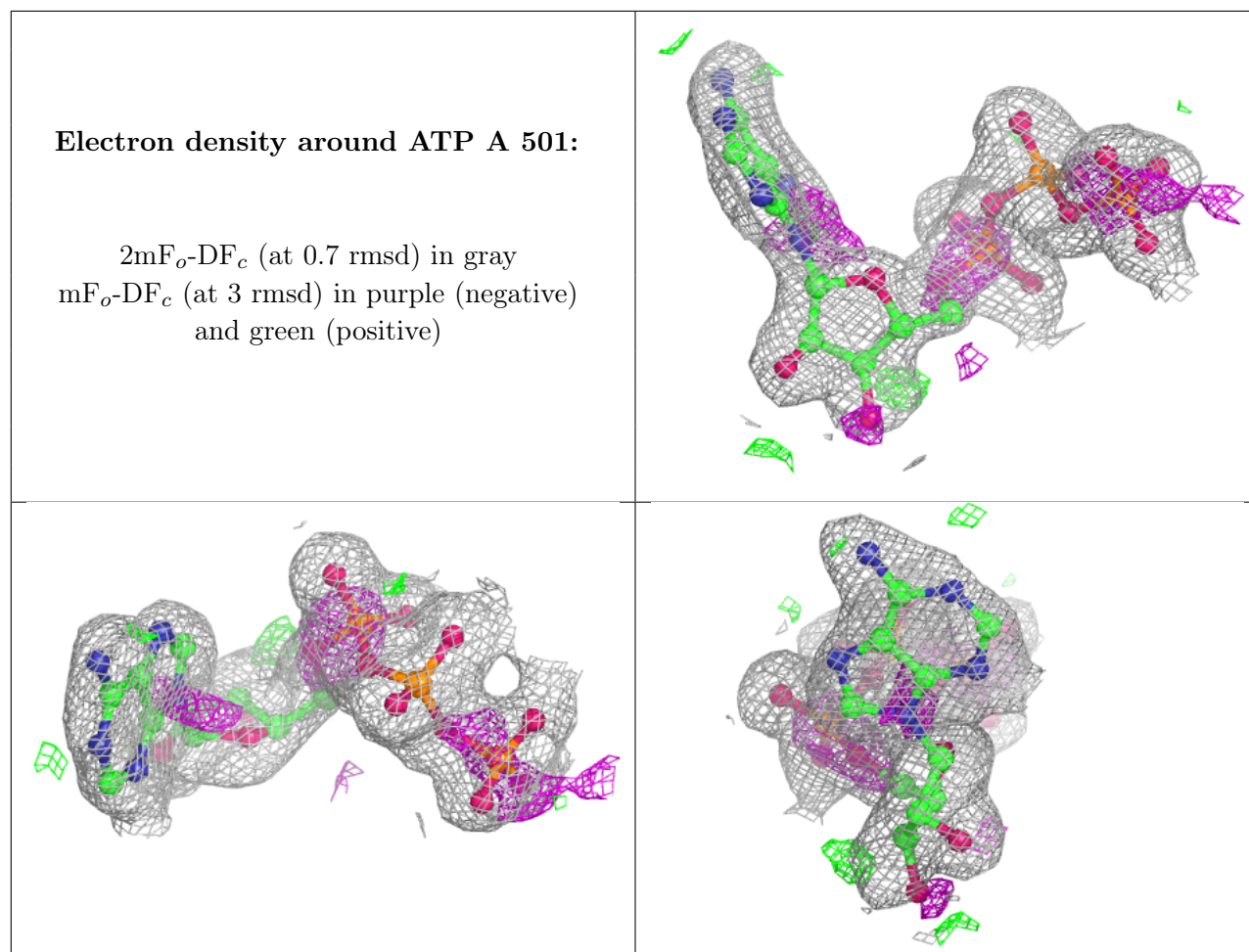
*Continued on next page...*

Continued from previous page...

Mol	Type	Chain	Res	Atoms	RSCC	RSR	B-factors( $\text{\AA}^2$ )	Q<0.9
5	EDO	A	505	4/4	0.91	0.14	41,42,42,42	0
2	ATP	A	501	31/31	0.94	0.11	28,36,40,46	0
5	EDO	A	504	4/4	0.95	0.13	24,26,26,27	0

The following is a graphical depiction of the model fit to experimental electron density of all instances of the Ligand of Interest. In addition, ligands with molecular weight > 250 and outliers as shown on the geometry validation Tables will also be included. Each fit is shown from different orientation to approximate a three-dimensional view.





## 6.5 Other polymers [i](#)

There are no such residues in this entry.