



Full wwPDB X-ray Structure Validation Report ⓘ

Nov 27, 2023 – 12:32 pm GMT

PDB ID : 7QD7
Title : TarM(Se)_G117R
Authors : Guo, Y.; Stehle, T.
Deposited on : 2021-11-26
Resolution : 2.06 Å(reported)

This is a Full wwPDB X-ray Structure Validation Report for a publicly released PDB entry.

We welcome your comments at validation@mail.wwpdb.org

A user guide is available at

<https://www.wwpdb.org/validation/2017/XrayValidationReportHelp>

with specific help available everywhere you see the ⓘ symbol.

The types of validation reports are described at

<http://www.wwpdb.org/validation/2017/FAQs#types>.

The following versions of software and data (see [references ⓘ](#)) were used in the production of this report:

MolProbity : 4.02b-467
Mogul : 1.8.4, CSD as541be (2020)
Xtriage (Phenix) : 1.13
EDS : 2.36
Percentile statistics : 20191225.v01 (using entries in the PDB archive December 25th 2019)
Refmac : 5.8.0158
CCP4 : 7.0.044 (Gargrove)
Ideal geometry (proteins) : Engh & Huber (2001)
Ideal geometry (DNA, RNA) : Parkinson et al. (1996)
Validation Pipeline (wwPDB-VP) : 2.36

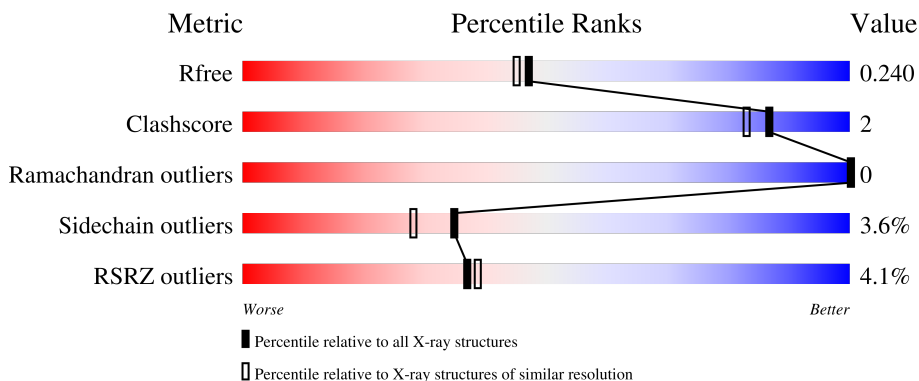
1 Overall quality at a glance

The following experimental techniques were used to determine the structure:

X-RAY DIFFRACTION

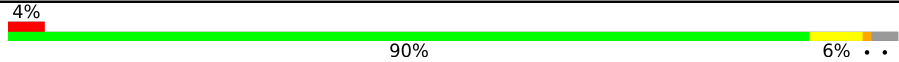
The reported resolution of this entry is 2.06 Å.

Percentile scores (ranging between 0-100) for global validation metrics of the entry are shown in the following graphic. The table shows the number of entries on which the scores are based.



Metric	Whole archive (#Entries)	Similar resolution (#Entries, resolution range(Å))
R_{free}	130704	2684 (2.08-2.04)
Clashscore	141614	2801 (2.08-2.04)
Ramachandran outliers	138981	2768 (2.08-2.04)
Sidechain outliers	138945	2768 (2.08-2.04)
RSRZ outliers	127900	2646 (2.08-2.04)

The table below summarises the geometric issues observed across the polymeric chains and their fit to the electron density. The red, orange, yellow and green segments of the lower bar indicate the fraction of residues that contain outliers for ≥ 3 , 2, 1 and 0 types of geometric quality criteria respectively. A grey segment represents the fraction of residues that are not modelled. The numeric value for each fraction is indicated below the corresponding segment, with a dot representing fractions $\leq 5\%$. The upper red bar (where present) indicates the fraction of residues that have poor fit to the electron density. The numeric value is given above the bar.

Mol	Chain	Length	Quality of chain
1	AAA	508	

2 Entry composition [i](#)

There are 6 unique types of molecules in this entry. The entry contains 3983 atoms, of which 0 are hydrogens and 0 are deuteriums.

In the tables below, the ZeroOcc column contains the number of atoms modelled with zero occupancy, the AltConf column contains the number of residues with at least one atom in alternate conformation and the Trace column contains the number of residues modelled with at most 2 atoms.

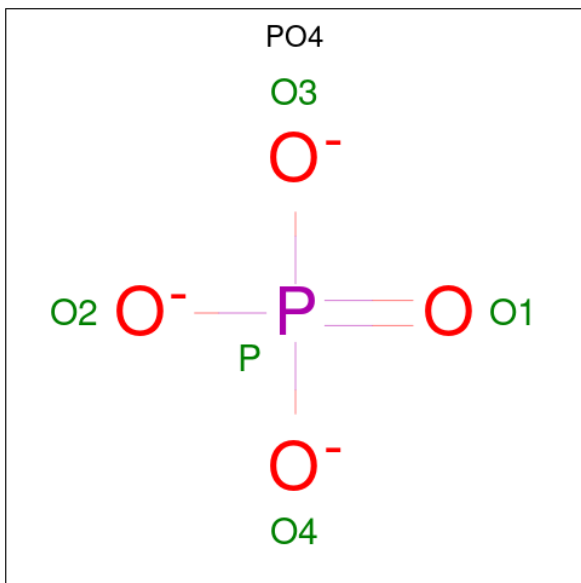
- Molecule 1 is a protein called TarM(Se)_G117R.

Mol	Chain	Residues	Atoms					ZeroOcc	AltConf	Trace
			Total	C	N	O	S			
1	AAA	492	3722	2416	598	693	15	0	0	0

- Molecule 2 is CHLORIDE ION (three-letter code: CL) (formula: Cl).

Mol	Chain	Residues	Atoms		ZeroOcc	AltConf
2	AAA	4	Total	Cl	0	0
			4	4		

- Molecule 3 is PHOSPHATE ION (three-letter code: PO4) (formula: O₄P).



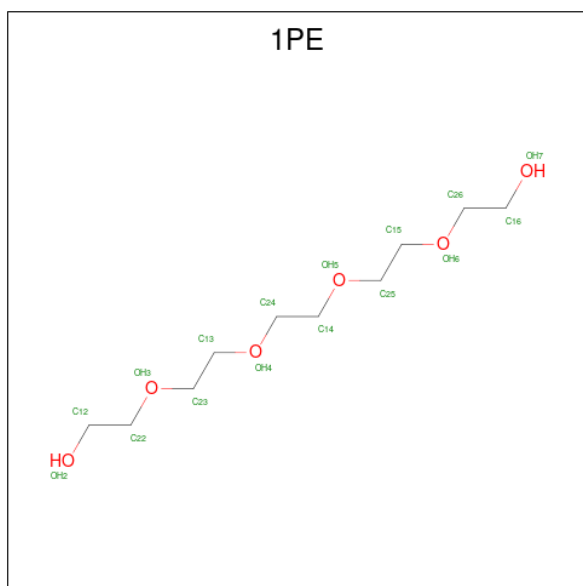
Mol	Chain	Residues	Atoms			ZeroOcc	AltConf
3	AAA	1	Total	O	P	0	0
			5	4	1		

- Molecule 4 is GLYCEROL (three-letter code: GOL) (formula: C₃H₈O₃).



Mol	Chain	Residues	Atoms			ZeroOcc	AltConf
4	AAA	1	Total	C	O	0	0
			6	3	3		

- Molecule 5 is PENTAETHYLENE GLYCOL (three-letter code: 1PE) (formula: $C_{10}H_{22}O_6$).



Mol	Chain	Residues	Atoms			ZeroOcc	AltConf
5	AAA	1	Total	C	O	0	0
			16	10	6		
5	AAA	1	Total	C	O	0	0
			13	8	5		

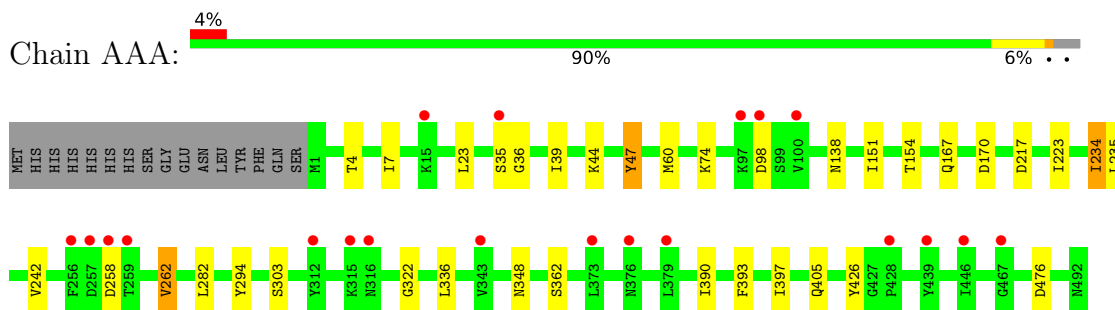
- Molecule 6 is water.

Mol	Chain	Residues	Atoms		ZeroOcc	AltConf
6	AAA	217	Total 217	O 217	0	0

3 Residue-property plots [i](#)

These plots are drawn for all protein, RNA, DNA and oligosaccharide chains in the entry. The first graphic for a chain summarises the proportions of the various outlier classes displayed in the second graphic. The second graphic shows the sequence view annotated by issues in geometry and electron density. Residues are color-coded according to the number of geometric quality criteria for which they contain at least one outlier: green = 0, yellow = 1, orange = 2 and red = 3 or more. A red dot above a residue indicates a poor fit to the electron density ($RSRZ > 2$). Stretches of 2 or more consecutive residues without any outlier are shown as a green connector. Residues present in the sample, but not in the model, are shown in grey.

- Molecule 1: TarM(Se)_G117R



4 Data and refinement statistics

Property	Value	Source
Space group	P 21 21 21	Depositor
Cell constants a, b, c, α , β , γ	58.68Å 88.42Å 97.49Å 90.00° 90.00° 90.00°	Depositor
Resolution (Å)	43.70 – 2.06 43.70 – 2.06	Depositor EDS
% Data completeness (in resolution range)	100.0 (43.70-2.06) 100.0 (43.70-2.06)	Depositor EDS
R_{merge}	(Not available)	Depositor
R_{sym}	(Not available)	Depositor
$\langle I/\sigma(I) \rangle$ ¹	1.60 (at 2.06Å)	Xtrriage
Refinement program	REFMAC 5.8.0258	Depositor
R, R_{free}	0.218 , 0.236 0.221 , 0.240	Depositor DCC
R_{free} test set	1603 reflections (5.00%)	wwPDB-VP
Wilson B-factor (Å ²)	40.9	Xtrriage
Anisotropy	0.163	Xtrriage
Bulk solvent k_{sol} (e/Å ³), B_{sol} (Å ²)	0.34 , 72.0	EDS
L-test for twinning ²	$\langle L \rangle = 0.48$, $\langle L^2 \rangle = 0.31$	Xtrriage
Estimated twinning fraction	No twinning to report.	Xtrriage
F_o, F_c correlation	0.95	EDS
Total number of atoms	3983	wwPDB-VP
Average B, all atoms (Å ²)	49.0	wwPDB-VP

Xtrriage's analysis on translational NCS is as follows: *The largest off-origin peak in the Patterson function is 5.65% of the height of the origin peak. No significant pseudotranslation is detected.*

¹Intensities estimated from amplitudes.

²Theoretical values of $\langle |L| \rangle$, $\langle L^2 \rangle$ for acentric reflections are 0.5, 0.333 respectively for untwinned datasets, and 0.375, 0.2 for perfectly twinned datasets.

5 Model quality [i](#)

5.1 Standard geometry [i](#)

Bond lengths and bond angles in the following residue types are not validated in this section: 1PE, PO4, CL, GOL

The Z score for a bond length (or angle) is the number of standard deviations the observed value is removed from the expected value. A bond length (or angle) with $|Z| > 5$ is considered an outlier worth inspection. RMSZ is the root-mean-square of all Z scores of the bond lengths (or angles).

Mol	Chain	Bond lengths		Bond angles	
		RMSZ	# Z >5	RMSZ	# Z >5
1	AAA	0.63	0/3792	0.66	0/5146

There are no bond length outliers.

There are no bond angle outliers.

There are no chirality outliers.

There are no planarity outliers.

5.2 Too-close contacts [i](#)

In the following table, the Non-H and H(model) columns list the number of non-hydrogen atoms and hydrogen atoms in the chain respectively. The H(added) column lists the number of hydrogen atoms added and optimized by MolProbity. The Clashes column lists the number of clashes within the asymmetric unit, whereas Symm-Clashes lists symmetry-related clashes.

Mol	Chain	Non-H	H(model)	H(added)	Clashes	Symm-Clashes
1	AAA	3722	0	3363	15	0
2	AAA	4	0	0	0	0
3	AAA	5	0	0	0	0
4	AAA	6	0	8	0	0
5	AAA	29	0	39	0	0
6	AAA	217	0	0	0	0
All	All	3983	0	3410	15	0

The all-atom clashscore is defined as the number of clashes found per 1000 atoms (including hydrogen atoms). The all-atom clashscore for this structure is 2.

All (15) close contacts within the same asymmetric unit are listed below, sorted by their clash magnitude.

Atom-1	Atom-2	Interatomic distance (Å)	Clash overlap (Å)
1:AAA:151:ILE:HD11	1:AAA:154:THR:HG23	1.82	0.61
1:AAA:390:ILE:HA	1:AAA:393:PHE:CD2	2.42	0.54
1:AAA:7:ILE:HG13	1:AAA:39:ILE:HB	1.91	0.53
1:AAA:336:LEU:HG	1:AAA:397:ILE:HD11	1.92	0.51
1:AAA:4:THR:OG1	1:AAA:36:GLY:HA2	2.10	0.51
1:AAA:322:GLY:HA3	1:AAA:393:PHE:CD2	2.51	0.46
1:AAA:262:VAL:HG11	1:AAA:294:TYR:OH	2.16	0.45
1:AAA:23:LEU:HD22	1:AAA:60:MET:HG3	1.99	0.45
1:AAA:44:LYS:HB2	1:AAA:47:TYR:CD2	2.52	0.45
1:AAA:74:LYS:HG3	1:AAA:170:ASP:HA	2.00	0.43
1:AAA:154:THR:OG1	1:AAA:167:GLN:HB2	2.19	0.42
1:AAA:282:LEU:HD13	1:AAA:405:GLN:HB2	2.02	0.42
1:AAA:217:ASP:HA	1:AAA:242:VAL:HG23	2.02	0.42
1:AAA:234:ILE:HG13	1:AAA:235:LEU:N	2.36	0.41
1:AAA:7:ILE:HD13	1:AAA:223:ILE:HG23	2.03	0.41

There are no symmetry-related clashes.

5.3 Torsion angles [i](#)

5.3.1 Protein backbone [i](#)

In the following table, the Percentiles column shows the percent Ramachandran outliers of the chain as a percentile score with respect to all X-ray entries followed by that with respect to entries of similar resolution.

The Analysed column shows the number of residues for which the backbone conformation was analysed, and the total number of residues.

Mol	Chain	Analysed	Favoured	Allowed	Outliers	Percentiles
1	AAA	490/508 (96%)	480 (98%)	10 (2%)	0	100 100

There are no Ramachandran outliers to report.

5.3.2 Protein sidechains [i](#)

In the following table, the Percentiles column shows the percent sidechain outliers of the chain as a percentile score with respect to all X-ray entries followed by that with respect to entries of similar resolution.

The Analysed column shows the number of residues for which the sidechain conformation was analysed, and the total number of residues.

Mol	Chain	Analysed	Rotameric	Outliers	Percentiles
1	AAA	337/471 (72%)	325 (96%)	12 (4%)	35 28

All (12) residues with a non-rotameric sidechain are listed below:

Mol	Chain	Res	Type
1	AAA	35	SER
1	AAA	47	TYR
1	AAA	98	ASP
1	AAA	138	ASN
1	AAA	234	ILE
1	AAA	258	ASP
1	AAA	262	VAL
1	AAA	303	SER
1	AAA	348	ASN
1	AAA	362	SER
1	AAA	426	TYR
1	AAA	476	ASP

Sometimes sidechains can be flipped to improve hydrogen bonding and reduce clashes. There are no such sidechains identified.

5.3.3 RNA [i](#)

There are no RNA molecules in this entry.

5.4 Non-standard residues in protein, DNA, RNA chains [i](#)

There are no non-standard protein/DNA/RNA residues in this entry.

5.5 Carbohydrates [i](#)

There are no monosaccharides in this entry.

5.6 Ligand geometry [i](#)

Of 8 ligands modelled in this entry, 4 are monoatomic - leaving 4 for Mogul analysis.

In the following table, the Counts columns list the number of bonds (or angles) for which Mogul statistics could be retrieved, the number of bonds (or angles) that are observed in the model and the number of bonds (or angles) that are defined in the Chemical Component Dictionary. The Link column lists molecule types, if any, to which the group is linked. The Z score for a bond

length (or angle) is the number of standard deviations the observed value is removed from the expected value. A bond length (or angle) with $|Z| > 2$ is considered an outlier worth inspection. RMSZ is the root-mean-square of all Z scores of the bond lengths (or angles).

Mol	Type	Chain	Res	Link	Bond lengths			Bond angles		
					Counts	RMSZ	# Z > 2	Counts	RMSZ	# Z > 2
5	1PE	AAA	507	-	15,15,15	0.19	0	14,14,14	0.12	0
3	PO4	AAA	505	-	4,4,4	0.85	0	6,6,6	0.53	0
4	GOL	AAA	506	-	5,5,5	0.10	0	5,5,5	0.25	0
5	1PE	AAA	508	-	12,12,15	0.20	0	11,11,14	0.15	0

In the following table, the Chirals column lists the number of chiral outliers, the number of chiral centers analysed, the number of these observed in the model and the number defined in the Chemical Component Dictionary. Similar counts are reported in the Torsion and Rings columns. '-' means no outliers of that kind were identified.

Mol	Type	Chain	Res	Link	Chirals	Torsions	Rings
5	1PE	AAA	507	-	-	2/13/13/13	-
5	1PE	AAA	508	-	-	3/10/10/13	-
4	GOL	AAA	506	-	-	0/4/4/4	-

There are no bond length outliers.

There are no bond angle outliers.

There are no chirality outliers.

All (5) torsion outliers are listed below:

Mol	Chain	Res	Type	Atoms
5	AAA	508	1PE	OH5-C14-C24-OH4
5	AAA	508	1PE	OH6-C15-C25-OH5
5	AAA	507	1PE	OH5-C14-C24-OH4
5	AAA	508	1PE	C24-C14-OH5-C25
5	AAA	507	1PE	OH7-C16-C26-OH6

There are no ring outliers.

No monomer is involved in short contacts.

5.7 Other polymers [\(i\)](#)

There are no such residues in this entry.

5.8 Polymer linkage issues

There are no chain breaks in this entry.

6 Fit of model and data [i](#)

6.1 Protein, DNA and RNA chains [i](#)

In the following table, the column labelled '#RSRZ > 2' contains the number (and percentage) of RSRZ outliers, followed by percent RSRZ outliers for the chain as percentile scores relative to all X-ray entries and entries of similar resolution. The OWAB column contains the minimum, median, 95th percentile and maximum values of the occupancy-weighted average B-factor per residue. The column labelled 'Q < 0.9' lists the number of (and percentage) of residues with an average occupancy less than 0.9.

Mol	Chain	Analysed	<RSRZ>	#RSRZ>2	OWAB(Å ²)	Q<0.9
1	AAA	492/508 (96%)	0.20	20 (4%) 37 39	29, 49, 75, 113	0

All (20) RSRZ outliers are listed below:

Mol	Chain	Res	Type	RSRZ
1	AAA	316	ASN	3.9
1	AAA	258	ASP	3.7
1	AAA	256	PHE	3.6
1	AAA	376	ASN	3.3
1	AAA	315	LYS	3.1
1	AAA	100	VAL	2.9
1	AAA	257	ASP	2.8
1	AAA	259	THR	2.6
1	AAA	15	LYS	2.4
1	AAA	439	TYR	2.4
1	AAA	312	TYR	2.4
1	AAA	446	ILE	2.3
1	AAA	98	ASP	2.3
1	AAA	97	LYS	2.3
1	AAA	428	PRO	2.2
1	AAA	343	VAL	2.2
1	AAA	379	LEU	2.1
1	AAA	35	SER	2.1
1	AAA	467	GLY	2.1
1	AAA	373	LEU	2.1

6.2 Non-standard residues in protein, DNA, RNA chains [i](#)

There are no non-standard protein/DNA/RNA residues in this entry.

6.3 Carbohydrates [i](#)

There are no monosaccharides in this entry.

6.4 Ligands [i](#)

In the following table, the Atoms column lists the number of modelled atoms in the group and the number defined in the chemical component dictionary. The B-factors column lists the minimum, median, 95th percentile and maximum values of B factors of atoms in the group. The column labelled 'Q< 0.9' lists the number of atoms with occupancy less than 0.9.

Mol	Type	Chain	Res	Atoms	RSCC	RSR	B-factors(Å ²)	Q<0.9
5	1PE	AAA	507	16/16	0.88	0.13	45,55,67,72	0
2	CL	AAA	503	1/1	0.89	0.20	67,67,67,67	0
5	1PE	AAA	508	13/16	0.89	0.17	37,50,71,71	0
4	GOL	AAA	506	6/6	0.92	0.13	42,46,52,56	0
2	CL	AAA	501	1/1	0.93	0.20	68,68,68,68	0
2	CL	AAA	502	1/1	0.93	0.16	46,46,46,46	0
2	CL	AAA	504	1/1	0.95	0.10	74,74,74,74	0
3	PO4	AAA	505	5/5	0.98	0.12	37,42,43,45	0

6.5 Other polymers [i](#)

There are no such residues in this entry.