



# Full wwPDB X-ray Structure Validation Report ⓘ

Apr 19, 2022 – 10:10 am BST

PDB ID : 7QDI  
Title : Structure of octameric left-handed 310-helix bundle: D-310HD  
Authors : Kumar, P.; Paterson, N.G.; Woolfson, D.N.  
Deposited on : 2021-11-27  
Resolution : 2.34 Å(reported)

This is a Full wwPDB X-ray Structure Validation Report for a publicly released PDB entry.

We welcome your comments at [validation@mail.wwpdb.org](mailto:validation@mail.wwpdb.org)

A user guide is available at

<https://www.wwpdb.org/validation/2017/XrayValidationReportHelp>

with specific help available everywhere you see the ⓘ symbol.

---

The following versions of software and data (see [references ⓘ](#)) were used in the production of this report:

MolProbity : 4.02b-467  
Mogul : 1.8.4, CSD as541be (2020)  
Xtriage (Phenix) : 1.13  
EDS : 2.27  
buster-report : 1.1.7 (2018)  
Percentile statistics : 20191225.v01 (using entries in the PDB archive December 25th 2019)  
Refmac : 5.8.0267  
CCP4 : 7.1.010 (Gargrove)  
Ideal geometry (proteins) : Engh & Huber (2001)  
Ideal geometry (DNA, RNA) : Parkinson et al. (1996)  
Validation Pipeline (wwPDB-VP) : 2.27

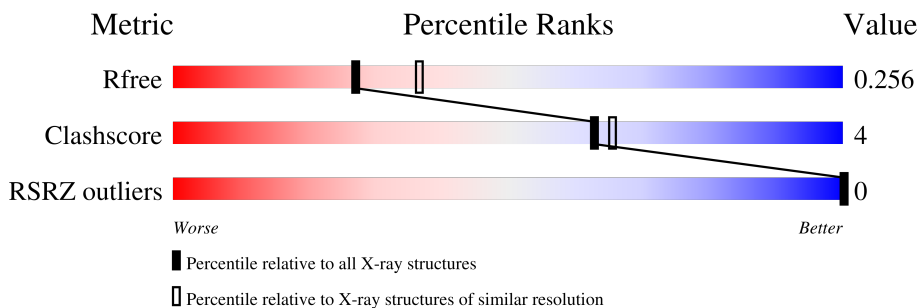
# 1 Overall quality at a glance i

The following experimental techniques were used to determine the structure:

*X-RAY DIFFRACTION*

The reported resolution of this entry is 2.34 Å.

Percentile scores (ranging between 0-100) for global validation metrics of the entry are shown in the following graphic. The table shows the number of entries on which the scores are based.




Metric	Whole archive (#Entries)	Similar resolution (#Entries, resolution range(Å))
$R_{free}$	130704	2096 (2.36-2.32)
Clashscore	141614	2193 (2.36-2.32)
RSRZ outliers	127900	2067 (2.36-2.32)

The table below summarises the geometric issues observed across the polymeric chains and their fit to the electron density. The red, orange, yellow and green segments of the lower bar indicate the fraction of residues that contain outliers for  $\geq 3$ , 2, 1 and 0 types of geometric quality criteria respectively. A grey segment represents the fraction of residues that are not modelled. The numeric value for each fraction is indicated below the corresponding segment, with a dot representing fractions  $\leq 5\%$ . The upper red bar (where present) indicates the fraction of residues that have poor fit to the electron density. The numeric value is given above the bar.

Mol	Chain	Length	Quality of chain
1	A	33	76% 18% 6%
1	B	33	88% 9%
1	C	33	85% 6% 9%
1	D	33	70% 18% 12%
1	E	33	73% 15% 9%
1	F	33	76% 6% 6% 12%
1	G	33	76% 15% 9%

*Continued on next page...*

*Continued from previous page...*

Mol	Chain	Length	Quality of chain
1	H	33	 67% 21% 12%

## 2 Entry composition

There are 10 unique types of molecules in this entry. The entry contains 2070 atoms, of which 0 are hydrogens and 0 are deuteriums.

In the tables below, the ZeroOcc column contains the number of atoms modelled with zero occupancy, the AltConf column contains the number of residues with at least one atom in alternate conformation and the Trace column contains the number of residues modelled with at most 2 atoms.

- Molecule 1 is a protein (with D amino acids) called D-310HD.

Mol	Chain	Residues	Atoms					ZeroOcc	AltConf	Trace
			Total	Br	C	N	O			
1	A	31	231	1	155	36	39	0	0	0
1	B	30	227	1	153	35	38	0	0	0
1	C	30	227	1	153	35	38	0	0	0
1	D	29	223	1	151	34	37	0	0	0
1	E	30	227	1	153	35	38	0	0	0
1	F	29	223	1	151	34	37	0	0	0
1	G	30	227	1	153	35	38	0	0	0
1	H	29	223	1	151	34	37	0	0	0

- Molecule 2 is TRIETHYLENE GLYCOL (three-letter code: PGE) (formula: C<sub>6</sub>H<sub>14</sub>O<sub>4</sub>).



Mol	Chain	Residues	Atoms			ZeroOcc	AltConf
2	A	1	Total	C	O	0	0
			10	6	4		
2	A	1	Total	C	O	0	0
			10	6	4		

- Molecule 3 is 1,2-ETHANEDIOL (three-letter code: EDO) (formula:  $C_2H_6O_2$ ).



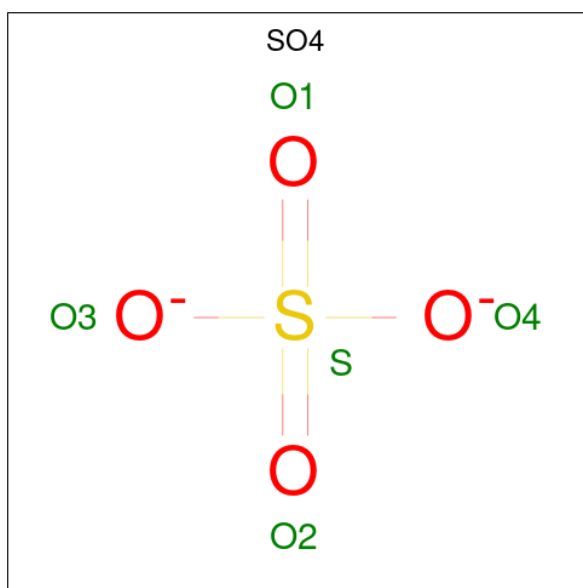
Mol	Chain	Residues	Atoms			ZeroOcc	AltConf
3	A	1	Total	C	O	0	0
			4	2	2		
3	A	1	Total	C	O	0	0
			4	2	2		

*Continued on next page...*

Continued from previous page...

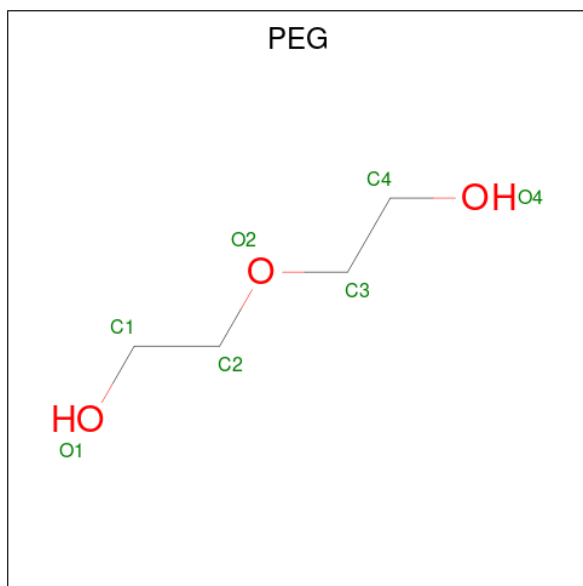
Mol	Chain	Residues	Atoms	ZeroOcc	AltConf
3	B	1	Total C O 4 2 2	0	0
3	B	1	Total C O 4 2 2	0	0
3	C	1	Total C O 4 2 2	0	0
3	C	1	Total C O 4 2 2	0	0
3	D	1	Total C O 4 2 2	0	0
3	D	1	Total C O 4 2 2	0	0
3	D	1	Total C O 4 2 2	0	0
3	E	1	Total C O 4 2 2	0	0
3	E	1	Total C O 4 2 2	0	0
3	E	1	Total C O 4 2 2	0	0
3	E	1	Total C O 4 2 2	0	0
3	G	1	Total C O 4 2 2	0	0

- Molecule 4 is SULFATE ION (three-letter code: SO<sub>4</sub>) (formula: O<sub>4</sub>S).



Mol	Chain	Residues	Atoms	ZeroOcc	AltConf
4	A	1	Total O S 5 4 1	0	0
4	C	1	Total O S 5 4 1	0	0
4	D	1	Total O S 5 4 1	0	0

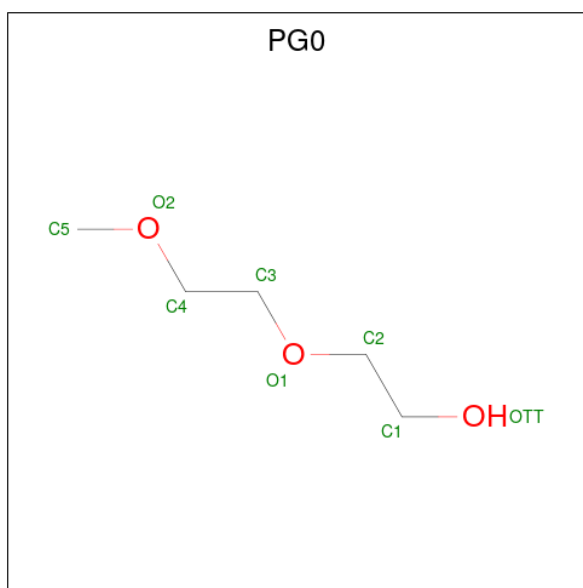
- Molecule 5 is DI(HYDROXYETHYL)ETHER (three-letter code: PEG) (formula: C<sub>4</sub>H<sub>10</sub>O<sub>3</sub>).



Mol	Chain	Residues	Atoms	ZeroOcc	AltConf
5	A	1	Total C O 7 4 3	0	0
5	A	1	Total C O 7 4 3	0	0
5	B	1	Total C O 7 4 3	0	0
5	E	1	Total C O 7 4 3	0	0
5	E	1	Total C O 7 4 3	0	0
5	E	1	Total C O 7 4 3	0	0
5	F	1	Total C O 7 4 3	0	0
5	G	1	Total C O 7 4 3	0	0

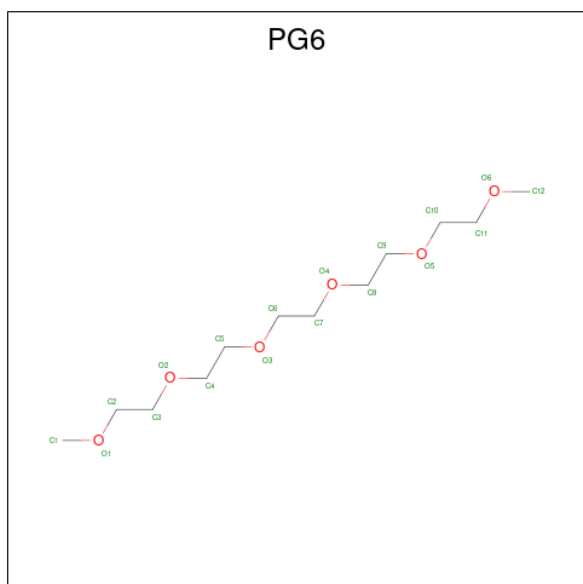
- Molecule 6 is 2-(2-METHOXYETHOXY)ETHANOL (three-letter code: PG0) (formula:

C<sub>5</sub>H<sub>12</sub>O<sub>3</sub>).



Mol	Chain	Residues	Atoms		ZeroOcc	AltConf
6	B	1	Total	C O	0	0
			8	5 3		

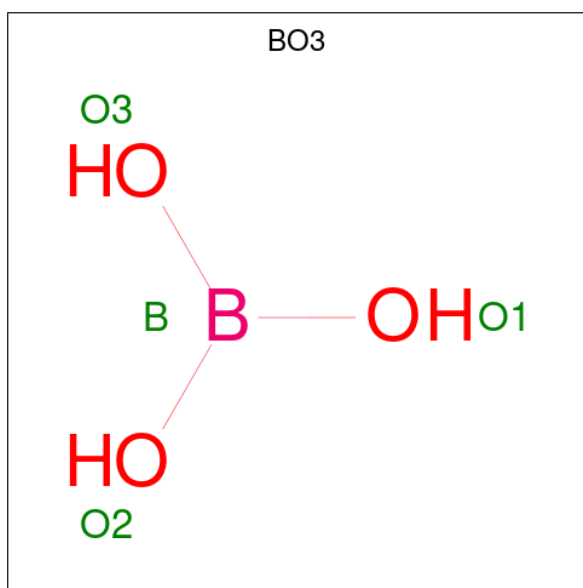
- Molecule 7 is 1-(2-METHOXY-ETHOXY)-2-{2-[2-(2-METHOXY-ETHOXY)-ETHOXY]-ETHOXY}-ETHANE (three-letter code: PG6) (formula: C<sub>12</sub>H<sub>26</sub>O<sub>6</sub>).



Mol	Chain	Residues	Atoms		ZeroOcc	AltConf
7	C	1	Total	C O	0	0
			18	12 6		

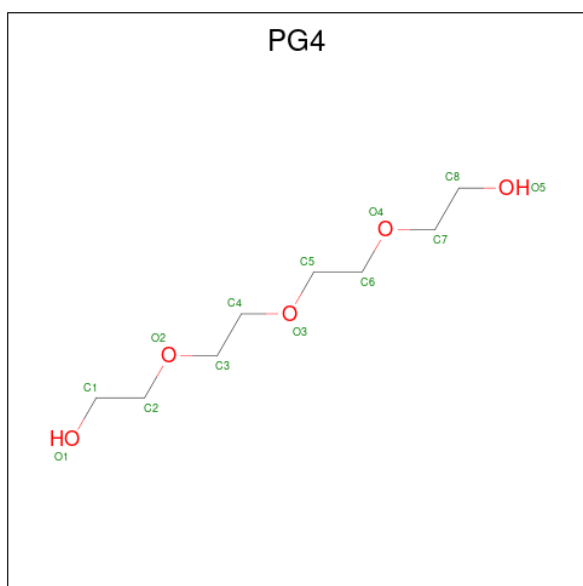


- Molecule 8 is BORIC ACID (three-letter code: BO3) (formula:  $\text{BH}_3\text{O}_3$ ).



Mol	Chain	Residues	Atoms	ZeroOcc	AltConf
8	C	1	Total B O 4 1 3	0	0
8	E	1	Total B O 4 1 3	0	0

- Molecule 9 is TETRAETHYLENE GLYCOL (three-letter code: PG4) (formula:  $\text{C}_8\text{H}_{18}\text{O}_5$ ).



Mol	Chain	Residues	Atoms	ZeroOcc	AltConf
9	E	1	Total C O 13 8 5	0	0

- Molecule 10 is water.

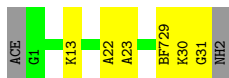
Mol	Chain	Residues	Atoms	ZeroOcc	AltConf
10	A	10	Total O 10 10	0	0
10	B	7	Total O 7 7	0	0
10	C	11	Total O 11 11	0	0
10	D	9	Total O 9 9	0	0
10	E	9	Total O 9 9	0	0
10	F	8	Total O 8 8	0	0
10	G	11	Total O 11 11	0	0
10	H	3	Total O 3 3	0	0

### 3 Residue-property plots [i](#)


These plots are drawn for all protein, RNA, DNA and oligosaccharide chains in the entry. The first graphic for a chain summarises the proportions of the various outlier classes displayed in the second graphic. The second graphic shows the sequence view annotated by issues in geometry and electron density. Residues are color-coded according to the number of geometric quality criteria for which they contain at least one outlier: green = 0, yellow = 1, orange = 2 and red = 3 or more. A red dot above a residue indicates a poor fit to the electron density ( $RSRZ > 2$ ). Stretches of 2 or more consecutive residues without any outlier are shown as a green connector. Residues present in the sample, but not in the model, are shown in grey.

- Molecule 1: D-310HD

Chain A: 




- Molecule 1: D-310HD

Chain B: 



- Molecule 1: D-310HD

Chain C: 



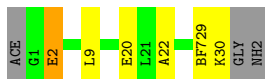
- Molecule 1: D-310HD

Chain D: 



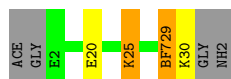
- Molecule 1: D-310HD

Chain E: 

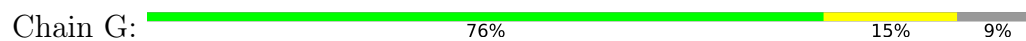


- Molecule 1: D-310HD

Chain F: 



- Molecule 1: D-310HD



- Molecule 1: D-310HD



## 4 Data and refinement statistics

Property	Value	Source
Space group	P 21 2 21	Depositor
Cell constants a, b, c, $\alpha$ , $\beta$ , $\gamma$	33.24Å 44.98Å 194.19Å 90.00° 90.00° 90.00°	Depositor
Resolution (Å)	29.59 – 2.34 29.57 – 2.34	Depositor EDS
% Data completeness (in resolution range)	97.3 (29.59-2.34) 97.3 (29.57-2.34)	Depositor EDS
$R_{merge}$	0.11	Depositor
$R_{sym}$	(Not available)	Depositor
$\langle I/\sigma(I) \rangle$ <sup>1</sup>	1.15 (at 2.34Å)	Xtrriage
Refinement program	REFMAC 5.8.0267	Depositor
R, $R_{free}$	0.189 , 0.239 0.201 , 0.256	Depositor DCC
$R_{free}$ test set	594 reflections (4.69%)	wwPDB-VP
Wilson B-factor (Å <sup>2</sup> )	43.0	Xtrriage
Anisotropy	0.172	Xtrriage
Bulk solvent $k_{sol}$ (e/Å <sup>3</sup> ), $B_{sol}$ (Å <sup>2</sup> )	(Not available) , (Not available)	EDS
L-test for twinning <sup>2</sup>	$\langle  L  \rangle = 0.52$ , $\langle L^2 \rangle = 0.36$	Xtrriage
Estimated twinning fraction	No twinning to report.	Xtrriage
$F_o, F_c$ correlation	0.96	EDS
Total number of atoms	2070	wwPDB-VP
Average B, all atoms (Å <sup>2</sup> )	51.0	wwPDB-VP

Xtrriage's analysis on translational NCS is as follows: *The largest off-origin peak in the Patterson function is 11.77% of the height of the origin peak. No significant pseudotranslation is detected.*

<sup>1</sup>Intensities estimated from amplitudes.

<sup>2</sup>Theoretical values of  $\langle |L| \rangle$ ,  $\langle L^2 \rangle$  for acentric reflections are 0.5, 0.333 respectively for untwinned datasets, and 0.375, 0.2 for perfectly twinned datasets.

## 5 Model quality [i](#)

### 5.1 Standard geometry [i](#)

Bond lengths and bond angles in the following residue types are not validated in this section: PG0, DGL, EDO, PGE, SO4, BF7, DLE, PEG, DLY, PG6, BO3, AIB, PG4

The Z score for a bond length (or angle) is the number of standard deviations the observed value is removed from the expected value. A bond length (or angle) with  $|Z| > 5$  is considered an outlier worth inspection. RMSZ is the root-mean-square of all Z scores of the bond lengths (or angles).

Mol	Chain	Bond lengths		Bond angles	
		RMSZ	# Z  >5	RMSZ	# Z  >5
1	A	1.45	0/6	1.12	0/4
1	B	1.13	0/3	0.40	0/2
1	C	1.22	0/3	1.68	0/2
1	E	1.71	0/3	1.27	0/2
1	G	0.78	0/3	1.33	0/2
All	All	1.32	0/18	1.22	0/12

There are no bond length outliers.

There are no bond angle outliers.

There are no chirality outliers.

There are no planarity outliers.

### 5.2 Too-close contacts [i](#)

In the following table, the Non-H and H(model) columns list the number of non-hydrogen atoms and hydrogen atoms in the chain respectively. The H(added) column lists the number of hydrogen atoms added and optimized by MolProbity. The Clashes column lists the number of clashes within the asymmetric unit, whereas Symm-Clashes lists symmetry-related clashes.

Mol	Chain	Non-H	H(model)	H(added)	Clashes	Symm-Clashes
1	A	231	0	248	4	0
1	B	227	0	245	1	0
1	C	227	0	245	0	0
1	D	223	0	243	4	0
1	E	227	0	245	6	0
1	F	223	0	243	3	0
1	G	227	0	245	3	0
1	H	223	0	242	4	0

*Continued on next page...*

Continued from previous page...

Mol	Chain	Non-H	H(model)	H(added)	Clashes	Symm-Clashes
2	A	20	0	28	0	0
3	A	8	0	12	0	0
3	B	8	0	12	2	0
3	C	8	0	12	0	0
3	D	12	0	18	1	0
3	E	16	0	24	0	0
3	G	4	0	6	0	0
4	A	5	0	0	1	0
4	C	5	0	0	0	0
4	D	5	0	0	0	0
5	A	14	0	20	0	0
5	B	7	0	10	0	0
5	E	21	0	30	0	0
5	F	7	0	10	0	0
5	G	7	0	10	0	0
6	B	8	0	12	0	0
7	C	18	0	26	0	0
8	C	4	0	3	0	0
8	E	4	0	3	0	0
9	E	13	0	18	0	0
10	A	10	0	0	0	0
10	B	7	0	0	0	0
10	C	11	0	0	0	0
10	D	9	0	0	0	0
10	E	9	0	0	1	0
10	F	8	0	0	0	0
10	G	11	0	0	0	0
10	H	3	0	0	0	0
All	All	2070	0	2210	18	0

The all-atom clashscore is defined as the number of clashes found per 1000 atoms (including hydrogen atoms). The all-atom clashscore for this structure is 4.

All (18) close contacts within the same asymmetric unit are listed below, sorted by their clash magnitude.

Atom-1	Atom-2	Interatomic distance (Å)	Clash overlap (Å)
1:A:30:DLY:O	1:A:31:GLY:C	2.33	0.66
1:D:25:DLY:NZ	1:E:20:DGL:OE2	2.41	0.53
1:B:24:DLE:HD11	1:H:24:DLE:HD13	1.90	0.52
1:F:29:BF7:O	1:F:30:DLY:HB3	2.09	0.51
1:E:29:BF7:O	1:E:30:DLY:HB3	2.11	0.50

Continued on next page...

Continued from previous page...

Atom-1	Atom-2	Interatomic distance (Å)	Clash overlap (Å)
1:E:29:BF7:O	1:E:30:DLY:CB	2.60	0.49
1:D:7:DLY:HE2	1:E:2:DGL:HG2	1.95	0.48
10:E:206:HOH:O	1:F:30:DLY:HD2	2.13	0.47
1:A:30:DLY:HE2	4:A:104:SO4:O3	2.15	0.47
1:D:10:AIB:HB23	1:E:9:DLE:HD23	1.97	0.46
1:A:13:DLY:HE2	3:B:104:EDO:H22	1.98	0.45
1:G:18:DLE:CD2	1:H:18:DLE:HD22	2.46	0.45
1:A:13:DLY:CE	3:B:104:EDO:H22	2.48	0.43
1:G:10:AIB:HB21	1:G:13:DLY:HD2	2.01	0.42
1:D:7:DLY:HE3	1:E:2:DGL:CD	2.50	0.42
3:D:103:EDO:H21	1:H:27:AIB:HB11	2.02	0.41
1:F:25:DLY:HG3	1:G:23:AIB:CB1	2.50	0.40
1:H:30:DLY:HA	1:H:30:DLY:HD3	1.91	0.40

There are no symmetry-related clashes.

## 5.3 Torsion angles [i](#)

### 5.3.1 Protein backbone [i](#)

There are no protein molecules in this entry.

### 5.3.2 Protein sidechains [i](#)

There are no protein molecules in this entry.

### 5.3.3 RNA [i](#)

There are no RNA molecules in this entry.

## 5.4 Non-standard residues in protein, DNA, RNA chains [i](#)

232 non-standard protein/DNA/RNA residues are modelled in this entry.

In the following table, the Counts columns list the number of bonds (or angles) for which Mogul statistics could be retrieved, the number of bonds (or angles) that are observed in the model and the number of bonds (or angles) that are defined in the Chemical Component Dictionary. The Link column lists molecule types, if any, to which the group is linked. The Z score for a bond length (or angle) is the number of standard deviations the observed value is removed from the



expected value. A bond length (or angle) with  $|Z| > 2$  is considered an outlier worth inspection. RMSZ is the root-mean-square of all Z scores of the bond lengths (or angles).

Mol	Type	Chain	Res	Link	Bond lengths			Bond angles		
					Counts	RMSZ	$\# Z  > 2$	Counts	RMSZ	$\# Z  > 2$
1	DLY	E	19	1	7,8,9	0.51	0	3,8,10	1.11	0
1	DLE	H	21	1	5,7,8	0.36	0	5,8,10	0.38	0
1	DLE	B	12	1	5,7,8	0.32	0	5,8,10	0.44	0
1	DGL	D	8	1	4,8,9	0.69	0	1,9,11	1.77	0
1	DLE	G	12	1	5,7,8	0.45	0	5,8,10	0.42	0
1	DLE	F	6	1	5,7,8	0.52	0	5,8,10	0.19	0
1	AIB	G	28	1	1,5,6	0.71	0	2,7,9	0.25	0
1	AIB	D	17	1	1,5,6	0.75	0	2,7,9	0.68	0
1	DGL	A	20	1	4,8,9	0.84	0	1,9,11	0.09	0
1	AIB	F	5	1	1,5,6	1.66	0	2,7,9	0.74	0
1	AIB	E	11	1	1,5,6	1.52	0	2,7,9	0.33	0
1	AIB	D	23	1	1,5,6	1.27	0	2,7,9	0.57	0
1	DGL	G	8	1	4,8,9	0.77	0	1,9,11	1.98	0
1	DLE	C	18	1	5,7,8	0.61	0	5,8,10	0.55	0
1	AIB	B	5	1	1,5,6	1.33	0	2,7,9	0.74	0
1	AIB	G	5	1	1,5,6	1.76	0	2,7,9	0.67	0
1	AIB	B	11	1	1,5,6	1.54	0	2,7,9	0.78	0
1	DLE	A	6	1	5,7,8	0.47	0	5,8,10	0.47	0
1	AIB	C	10	1	1,5,6	1.35	0	2,7,9	0.03	0
1	DLY	A	7	1	7,8,9	0.59	0	3,8,10	0.61	0
1	DGL	E	2	1	4,8,9	1.12	1 (25%)	1,9,11	1.60	0
1	DLY	A	13	1	7,8,9	0.66	0	3,8,10	0.50	0
1	BF7	A	29	1	11,12,13	0.82	0	12,15,17	1.31	2 (16%)
1	AIB	G	16	1	1,5,6	1.43	0	2,7,9	0.26	0
1	DLY	C	7	1	7,8,9	0.73	0	3,8,10	0.63	0
1	DLY	D	7	1	7,8,9	0.55	0	3,8,10	0.90	0
1	DGL	B	2	1	4,8,9	0.93	0	1,9,11	0.03	0
1	AIB	E	16	1	1,5,6	1.25	0	2,7,9	0.10	0
1	DLE	H	24	1	5,7,8	0.36	0	5,8,10	0.60	0
1	AIB	A	11	1	1,5,6	1.54	0	2,7,9	0.70	0
1	DGL	A	8	1	4,8,9	0.61	0	1,9,11	1.52	0
1	DLY	H	13	1	7,8,9	0.42	0	3,8,10	0.57	0
1	DLE	B	6	1	5,7,8	0.49	0	5,8,10	0.16	0
1	DGL	A	14	1	4,8,9	0.76	0	1,9,11	0.89	0
1	AIB	E	27	1	1,5,6	0.80	0	2,7,9	0.42	0
1	DLY	D	19	1	7,8,9	0.31	0	3,8,10	0.24	0
1	DLY	G	13	1	7,8,9	0.69	0	3,8,10	0.83	0
1	AIB	D	16	1	1,5,6	0.95	0	2,7,9	0.23	0
1	DLE	E	21	1	5,7,8	0.49	0	5,8,10	0.17	0
1	AIB	F	26	1	1,5,6	1.88	0	2,7,9	0.45	0

Mol	Type	Chain	Res	Link	Bond lengths			Bond angles		
					Counts	RMSZ	# Z  > 2	Counts	RMSZ	# Z  > 2
1	AIB	H	22	1	1,5,6	2.01	1 (100%)	2,7,9	0.10	0
1	AIB	G	4	1	1,5,6	1.71	0	2,7,9	0.45	0
1	AIB	A	27	1	1,5,6	1.11	0	2,7,9	0.34	0
1	DLE	C	9	1	5,7,8	0.37	0	5,8,10	0.29	0
1	DLE	B	9	1	5,7,8	0.40	0	5,8,10	0.22	0
1	DLE	B	15	1	5,7,8	0.29	0	5,8,10	0.24	0
1	DGL	A	2	1	4,8,9	0.86	0	1,9,11	1.14	0
1	AIB	H	5	1	1,5,6	1.24	0	2,7,9	0.62	0
1	DLE	G	15	1	5,7,8	0.31	0	5,8,10	0.39	0
1	AIB	E	4	1	1,5,6	1.64	0	2,7,9	0.45	0
1	AIB	D	11	1	1,5,6	1.78	0	2,7,9	0.76	0
1	AIB	B	27	1	1,5,6	1.61	0	2,7,9	0.20	0
1	DLY	B	30	1	7,8,9	0.52	0	3,8,10	0.23	0
1	AIB	G	26	1	1,5,6	1.44	0	2,7,9	0.15	0
1	AIB	C	16	1	1,5,6	1.39	0	2,7,9	0.17	0
1	AIB	E	5	1	1,5,6	1.27	0	2,7,9	0.61	0
1	DLE	C	24	1	5,7,8	0.85	0	5,8,10	0.61	0
1	AIB	B	4	1	1,5,6	1.31	0	2,7,9	0.30	0
1	DLE	A	15	1	5,7,8	0.31	0	5,8,10	0.32	0
1	DGL	H	8	1	4,8,9	0.45	0	1,9,11	1.76	0
1	DLY	B	25	1	7,8,9	0.37	0	3,8,10	0.24	0
1	DLE	F	9	1	5,7,8	0.49	0	5,8,10	0.37	0
1	AIB	H	11	1	1,5,6	1.65	0	2,7,9	0.69	0
1	AIB	F	23	1	1,5,6	1.74	0	2,7,9	0.43	0
1	AIB	G	11	1	1,5,6	1.17	0	2,7,9	0.52	0
1	BF7	H	29	1	11,12,13	0.76	0	12,15,17	1.81	1 (8%)
1	DLY	G	19	1	7,8,9	0.55	0	3,8,10	0.41	0
1	AIB	H	17	1	1,5,6	1.07	0	2,7,9	0.42	0
1	DLY	C	19	1	7,8,9	0.65	0	3,8,10	1.11	0
1	DLE	C	3	1	5,7,8	0.47	0	5,8,10	0.52	0
1	AIB	A	4	1	1,5,6	1.45	0	2,7,9	0.35	0
1	AIB	A	17	1	1,5,6	1.07	0	2,7,9	0.36	0
1	DGL	F	14	1	4,8,9	0.54	0	1,9,11	1.53	0
1	DGL	G	2	1	4,8,9	1.01	0	1,9,11	0.52	0
1	AIB	C	5	1	1,5,6	1.48	0	2,7,9	0.48	0
1	AIB	C	27	1	1,5,6	0.52	0	2,7,9	0.24	0
1	AIB	D	27	1	1,5,6	2.10	1 (100%)	2,7,9	0.25	0
1	AIB	C	28	1	1,5,6	1.50	0	2,7,9	0.40	0
1	AIB	H	28	1	1,5,6	1.51	0	2,7,9	0.56	0
1	DLE	D	21	1	5,7,8	0.51	0	5,8,10	0.32	0
1	DLY	C	30	1	7,8,9	0.24	0	3,8,10	0.29	0
1	AIB	E	22	1	1,5,6	2.25	1 (100%)	2,7,9	0.48	0

Mol	Type	Chain	Res	Link	Bond lengths			Bond angles		
					Counts	RMSZ	# Z  > 2	Counts	RMSZ	# Z  > 2
1	DLE	E	6	1	5,7,8	0.37	0	5,8,10	0.39	0
1	DLE	G	18	1	5,7,8	0.43	0	5,8,10	0.32	0
1	AIB	G	10	1	1,5,6	1.78	0	2,7,9	0.34	0
1	DLE	H	15	1	5,7,8	0.39	0	5,8,10	0.78	0
1	DLY	F	7	1	7,8,9	0.42	0	3,8,10	0.20	0
1	AIB	A	5	1	1,5,6	1.44	0	2,7,9	0.74	0
1	DLE	H	9	1	5,7,8	0.45	0	5,8,10	0.36	0
1	DGL	C	8	1	4,8,9	0.85	0	1,9,11	1.20	0
1	DGL	E	20	1	4,8,9	0.91	0	1,9,11	1.00	0
1	AIB	B	22	1	1,5,6	1.95	0	2,7,9	0.11	0
1	DLY	E	25	1	7,8,9	0.65	0	3,8,10	0.28	0
1	AIB	H	27	1	1,5,6	0.70	0	2,7,9	0.35	0
1	DLE	D	6	1	5,7,8	0.66	0	5,8,10	0.28	0
1	AIB	C	17	1	1,5,6	1.33	0	2,7,9	0.36	0
1	AIB	D	5	1	1,5,6	1.19	0	2,7,9	0.50	0
1	DLY	H	19	1	7,8,9	0.38	0	3,8,10	0.38	0
1	DLE	A	24	1	5,7,8	0.54	0	5,8,10	0.87	0
1	DLY	B	7	1	7,8,9	0.37	0	3,8,10	0.35	0
1	DGL	E	8	1	4,8,9	0.63	0	1,9,11	1.33	0
1	DLY	D	30	1	7,8,9	0.36	0	3,8,10	0.18	0
1	DLE	D	24	1	5,7,8	0.81	0	5,8,10	0.60	0
1	AIB	C	22	1	1,5,6	2.36	1 (100%)	2,7,9	0.15	0
1	DLE	G	6	1	5,7,8	0.52	0	5,8,10	0.25	0
1	AIB	B	16	1	1,5,6	0.92	0	2,7,9	0.30	0
1	DLY	F	30	1	7,8,9	0.48	0	3,8,10	0.26	0
1	DGL	B	14	1	4,8,9	0.62	0	1,9,11	1.75	0
1	DLE	E	3	1	5,7,8	0.67	0	5,8,10	0.29	0
1	DLE	H	18	1	5,7,8	0.35	0	5,8,10	0.57	0
1	AIB	A	26	1	1,5,6	1.22	0	2,7,9	0.20	0
1	DLY	C	13	1	7,8,9	0.64	0	3,8,10	0.55	0
1	DLY	D	13	1	7,8,9	0.50	0	3,8,10	0.11	0
1	DGL	H	14	1	4,8,9	0.49	0	1,9,11	2.59	1 (100%)
1	DLY	H	30	1	7,8,9	0.47	0	3,8,10	0.41	0
1	DLE	E	18	1	5,7,8	0.50	0	5,8,10	0.35	0
1	AIB	D	26	1	1,5,6	2.29	1 (100%)	2,7,9	0.20	0
1	DLE	C	12	1	5,7,8	0.35	0	5,8,10	0.45	0
1	DLE	H	12	1	5,7,8	0.30	0	5,8,10	0.50	0
1	AIB	A	16	1	1,5,6	0.91	0	2,7,9	0.28	0
1	AIB	D	22	1	1,5,6	1.57	0	2,7,9	0.29	0
1	DGL	D	2	1	4,8,9	1.00	0	1,9,11	1.01	0
1	DLE	E	15	1	5,7,8	0.40	0	5,8,10	0.31	0
1	AIB	H	4	1	1,5,6	1.59	0	2,7,9	0.50	0

Mol	Type	Chain	Res	Link	Bond lengths			Bond angles		
					Counts	RMSZ	# Z  > 2	Counts	RMSZ	# Z  > 2
1	AIB	E	10	1	1,5,6	1.48	0	2,7,9	0.10	0
1	AIB	A	22	1	1,5,6	2.73	1 (100%)	2,7,9	0.26	0
1	AIB	H	26	1	1,5,6	1.61	0	2,7,9	0.36	0
1	BF7	B	29	1	11,12,13	0.81	0	12,15,17	0.67	0
1	DLE	F	3	1	5,7,8	0.56	0	5,8,10	0.25	0
1	DGL	D	20	1	4,8,9	0.52	0	1,9,11	0.91	0
1	AIB	G	17	1	1,5,6	0.67	0	2,7,9	0.47	0
1	DLE	F	24	1	5,7,8	0.44	0	5,8,10	0.59	0
1	DLY	F	25	1	7,8,9	0.90	1 (14%)	3,8,10	0.23	0
1	DLY	E	7	1	7,8,9	0.63	0	3,8,10	0.82	0
1	AIB	B	10	1	1,5,6	0.90	0	2,7,9	0.29	0
1	BF7	E	29	1	11,12,13	0.75	0	12,15,17	0.90	0
1	AIB	F	27	1	1,5,6	1.69	0	2,7,9	0.44	0
1	AIB	C	11	1	1,5,6	1.12	0	2,7,9	0.29	0
1	DLY	A	19	1	7,8,9	0.58	0	3,8,10	1.16	0
1	AIB	G	23	1	1,5,6	0.91	0	2,7,9	0.22	0
1	DGL	B	8	1	4,8,9	0.45	0	1,9,11	1.44	0
1	DGL	E	14	1	4,8,9	0.88	0	1,9,11	0.76	0
1	DGL	D	14	1	4,8,9	0.39	0	1,9,11	0.95	0
1	AIB	C	4	1	1,5,6	1.51	0	2,7,9	0.41	0
1	DLY	B	19	1	7,8,9	0.50	0	3,8,10	0.37	0
1	DLE	F	12	1	5,7,8	0.45	0	5,8,10	0.32	0
1	DLE	B	21	1	5,7,8	0.18	0	5,8,10	0.37	0
1	DLE	G	21	1	5,7,8	0.52	0	5,8,10	0.36	0
1	DLE	E	9	1	5,7,8	0.50	0	5,8,10	0.44	0
1	DLE	A	3	1	5,7,8	0.75	0	5,8,10	0.64	0
1	DLE	D	3	1	5,7,8	0.46	0	5,8,10	0.16	0
1	DLE	F	18	1	5,7,8	0.52	0	5,8,10	0.40	0
1	DLE	A	18	1	5,7,8	0.55	0	5,8,10	0.51	0
1	AIB	H	23	1	1,5,6	1.07	0	2,7,9	0.59	0
1	DLY	D	25	1	7,8,9	0.44	0	3,8,10	0.19	0
1	AIB	B	28	1	1,5,6	1.58	0	2,7,9	0.33	0
1	BF7	C	29	1	11,12,13	0.71	0	12,15,17	0.76	0
1	DLY	G	7	1	7,8,9	0.48	0	3,8,10	0.77	0
1	BF7	D	29	1	11,12,13	0.74	0	12,15,17	1.27	1 (8%)
1	DLE	H	3	1	5,7,8	0.53	0	5,8,10	0.40	0
1	DLE	D	18	1	5,7,8	0.64	0	5,8,10	0.43	0
1	DLE	A	12	1	5,7,8	0.47	0	5,8,10	0.69	0
1	DGL	C	14	1	4,8,9	0.63	0	1,9,11	0.66	0
1	DLE	B	3	1	5,7,8	0.53	0	5,8,10	0.11	0
1	DLE	A	21	1	5,7,8	0.44	0	5,8,10	0.33	0
1	AIB	F	22	1	1,5,6	1.13	0	2,7,9	0.50	0

Mol	Type	Chain	Res	Link	Bond lengths			Bond angles		
					Counts	RMSZ	# Z  > 2	Counts	RMSZ	# Z  > 2
1	DLE	G	3	1	5,7,8	0.61	0	5,8,10	0.49	0
1	DLE	E	24	1	5,7,8	0.45	0	5,8,10	0.73	0
1	DLE	C	15	1	5,7,8	0.32	0	5,8,10	0.32	0
1	AIB	D	10	1	1,5,6	1.09	0	2,7,9	0.38	0
1	DLE	D	12	1	5,7,8	0.43	0	5,8,10	0.31	0
1	AIB	A	23	1	1,5,6	2.21	1 (100%)	2,7,9	0.33	0
1	DLE	C	21	1	5,7,8	0.35	0	5,8,10	0.26	0
1	DLE	B	24	1	5,7,8	0.28	0	5,8,10	0.45	0
1	DLE	G	24	1	5,7,8	0.42	0	5,8,10	0.59	0
1	AIB	F	10	1	1,5,6	0.69	0	2,7,9	0.43	0
1	DLY	B	13	1	7,8,9	0.46	0	3,8,10	0.14	0
1	AIB	E	26	1	1,5,6	1.78	0	2,7,9	0.33	0
1	DGL	G	14	1	4,8,9	0.73	0	1,9,11	0.81	0
1	AIB	A	28	1	1,5,6	1.07	0	2,7,9	0.26	0
1	DLY	G	30	1	7,8,9	0.63	0	3,8,10	0.11	0
1	DLE	C	6	1	5,7,8	0.36	0	5,8,10	0.37	0
1	DLY	H	7	1	7,8,9	0.39	0	3,8,10	0.24	0
1	DLY	F	13	1	7,8,9	0.48	0	3,8,10	0.14	0
1	AIB	F	16	1	1,5,6	0.63	0	2,7,9	0.27	0
1	AIB	E	28	1	1,5,6	1.64	0	2,7,9	0.51	0
1	AIB	D	28	1	1,5,6	1.47	0	2,7,9	0.45	0
1	DLY	E	30	1	7,8,9	0.50	0	3,8,10	0.28	0
1	DGL	F	20	1	4,8,9	0.52	0	1,9,11	2.13	1 (100%)
1	DLE	D	9	1	5,7,8	0.46	0	5,8,10	0.27	0
1	DLE	B	18	1	5,7,8	0.39	0	5,8,10	0.47	0
1	DLE	F	15	1	5,7,8	0.24	0	5,8,10	0.37	0
1	AIB	F	11	1	1,5,6	1.56	0	2,7,9	0.75	0
1	AIB	E	17	1	1,5,6	1.01	0	2,7,9	0.35	0
1	DLE	G	9	1	5,7,8	0.45	0	5,8,10	0.24	0
1	DLY	F	19	1	7,8,9	0.43	0	3,8,10	0.44	0
1	AIB	H	10	1	1,5,6	0.68	0	2,7,9	0.28	0
1	DLY	E	13	1	7,8,9	0.55	0	3,8,10	0.88	0
1	AIB	F	4	1	1,5,6	1.55	0	2,7,9	0.46	0
1	AIB	E	23	1	1,5,6	1.55	0	2,7,9	0.25	0
1	DLY	A	25	1	7,8,9	0.45	0	3,8,10	0.75	0
1	AIB	B	26	1	1,5,6	1.31	0	2,7,9	0.11	0
1	AIB	B	17	1	1,5,6	0.68	0	2,7,9	0.81	0
1	DGL	F	2	1	4,8,9	0.80	0	1,9,11	1.90	0
1	AIB	G	27	1	1,5,6	0.24	0	2,7,9	0.19	0
1	DLY	A	30	1	7,8,9	0.63	0	3,8,10	0.70	0
1	DGL	C	2	1	4,8,9	0.96	0	1,9,11	0.42	0
1	DLE	H	6	1	5,7,8	0.39	0	5,8,10	0.41	0

Mol	Type	Chain	Res	Link	Bond lengths			Bond angles		
					Counts	RMSZ	# Z  > 2	Counts	RMSZ	# Z  > 2
1	AIB	B	23	1	1,5,6	1.76	0	2,7,9	0.52	0
1	DLE	D	15	1	5,7,8	0.62	0	5,8,10	0.42	0
1	BF7	F	29	1	11,12,13	0.49	0	12,15,17	1.62	2 (16%)
1	AIB	C	23	1	1,5,6	1.14	0	2,7,9	0.51	0
1	DGL	H	2	1	4,8,9	0.53	0	1,9,11	0.65	0
1	AIB	F	17	1	1,5,6	1.37	0	2,7,9	0.63	0
1	AIB	C	26	1	1,5,6	2.50	1 (100%)	2,7,9	0.25	0
1	DLY	H	25	1	7,8,9	0.51	0	3,8,10	0.23	0
1	DLY	C	25	1	7,8,9	0.59	0	3,8,10	0.43	0
1	DGL	H	20	1	4,8,9	0.27	0	1,9,11	0.43	0
1	DLY	G	25	1	7,8,9	0.43	0	3,8,10	0.47	0
1	AIB	D	4	1	1,5,6	0.96	0	2,7,9	0.47	0
1	DGL	B	20	1	4,8,9	0.59	0	1,9,11	1.25	0
1	DGL	C	20	1	4,8,9	0.97	0	1,9,11	0.00	0
1	DGL	F	8	1	4,8,9	0.52	0	1,9,11	1.49	0
1	AIB	H	16	1	1,5,6	1.11	0	2,7,9	0.25	0
1	DLE	E	12	1	5,7,8	0.54	0	5,8,10	0.55	0
1	DGL	G	20	1	4,8,9	0.56	0	1,9,11	1.28	0
1	DLE	F	21	1	5,7,8	0.36	0	5,8,10	0.31	0
1	AIB	F	28	1	1,5,6	1.72	0	2,7,9	0.40	0
1	AIB	G	22	1	1,5,6	1.31	0	2,7,9	0.18	0
1	BF7	G	29	1	11,12,13	0.64	0	12,15,17	1.27	2 (16%)
1	DLE	A	9	1	5,7,8	0.40	0	5,8,10	0.40	0
1	AIB	A	10	1	1,5,6	1.18	0	2,7,9	0.17	0

In the following table, the Chirals column lists the number of chiral outliers, the number of chiral centers analysed, the number of these observed in the model and the number defined in the Chemical Component Dictionary. Similar counts are reported in the Torsion and Rings columns. '-' means no outliers of that kind were identified.

Mol	Type	Chain	Res	Link	Chirals	Torsions	Rings
1	DLY	E	19	1	-	0/6/7/9	-
1	DLE	H	21	1	-	4/5/6/8	-
1	DLE	B	12	1	-	0/5/6/8	-
1	DGL	D	8	1	-	0/4/7/9	-
1	DLE	G	12	1	-	1/5/6/8	-
1	DLE	F	6	1	-	0/5/6/8	-
1	AIB	G	28	1	-	1/2/3/6	-
1	AIB	D	17	1	-	2/2/3/6	-
1	DGL	A	20	1	-	0/4/7/9	-
1	AIB	F	5	1	-	0/2/3/6	-

Continued on next page...

*Continued from previous page...*

Mol	Type	Chain	Res	Link	Chirals	Torsions	Rings
1	AIB	E	11	1	-	1/2/3/6	-
1	AIB	D	23	1	-	1/2/3/6	-
1	DGL	G	8	1	-	0/4/7/9	-
1	DLE	C	18	1	-	3/5/6/8	-
1	AIB	B	5	1	-	1/2/3/6	-
1	AIB	G	5	1	-	1/2/3/6	-
1	AIB	B	11	1	-	1/2/3/6	-
1	DLE	A	6	1	-	1/5/6/8	-
1	AIB	C	10	1	-	1/2/3/6	-
1	DLY	A	7	1	-	2/6/7/9	-
1	DGL	E	2	1	-	2/4/7/9	-
1	DLY	A	13	1	-	3/6/7/9	-
1	BF7	A	29	1	-	2/5/6/8	0/1/1/1
1	AIB	G	16	1	-	1/2/3/6	-
1	DLY	C	7	1	-	1/6/7/9	-
1	DLY	D	7	1	-	3/6/7/9	-
1	DGL	B	2	1	-	2/4/7/9	-
1	AIB	E	16	1	-	1/2/3/6	-
1	DLE	H	24	1	-	2/5/6/8	-
1	AIB	A	11	1	-	1/2/3/6	-
1	DGL	A	8	1	-	0/4/7/9	-
1	DLY	H	13	1	-	1/6/7/9	-
1	DLE	B	6	1	-	0/5/6/8	-
1	DGL	A	14	1	-	0/4/7/9	-
1	AIB	E	27	1	-	2/2/3/6	-
1	DLY	D	19	1	-	0/6/7/9	-
1	DLY	G	13	1	-	2/6/7/9	-
1	AIB	D	16	1	-	1/2/3/6	-
1	DLE	E	21	1	-	0/5/6/8	-
1	AIB	F	26	1	-	0/2/3/6	-
1	AIB	H	22	1	-	0/2/3/6	-
1	AIB	G	4	1	-	1/2/3/6	-
1	AIB	A	27	1	-	1/2/3/6	-
1	DLE	C	9	1	-	0/5/6/8	-
1	DLE	B	9	1	-	0/5/6/8	-
1	DLE	B	15	1	-	0/5/6/8	-
1	DGL	A	2	1	-	2/4/7/9	-
1	AIB	H	5	1	-	1/2/3/6	-
1	DLE	G	15	1	-	0/5/6/8	-
1	AIB	E	4	1	-	1/2/3/6	-

*Continued on next page...*

*Continued from previous page...*

Mol	Type	Chain	Res	Link	Chirals	Torsions	Rings
1	AIB	D	11	1	-	1/2/3/6	-
1	AIB	B	27	1	-	0/2/3/6	-
1	DLY	B	30	1	-	1/6/7/9	-
1	AIB	G	26	1	-	2/2/3/6	-
1	AIB	C	16	1	-	1/2/3/6	-
1	AIB	E	5	1	-	1/2/3/6	-
1	DLE	C	24	1	-	0/5/6/8	-
1	AIB	B	4	1	-	1/2/3/6	-
1	DLE	A	15	1	-	0/5/6/8	-
1	DGL	H	8	1	-	0/4/7/9	-
1	DLY	B	25	1	-	0/6/7/9	-
1	DLE	F	9	1	-	4/5/6/8	-
1	AIB	H	11	1	-	1/2/3/6	-
1	AIB	F	23	1	-	1/2/3/6	-
1	AIB	G	11	1	-	1/2/3/6	-
1	BF7	H	29	1	-	1/5/6/8	0/1/1/1
1	DLY	G	19	1	-	1/6/7/9	-
1	AIB	H	17	1	-	2/2/3/6	-
1	DLY	C	19	1	-	1/6/7/9	-
1	DLE	C	3	1	-	1/5/6/8	-
1	AIB	A	4	1	-	1/2/3/6	-
1	AIB	A	17	1	-	1/2/3/6	-
1	DGL	F	14	1	-	0/4/7/9	-
1	DGL	G	2	1	-	1/4/7/9	-
1	AIB	C	5	1	-	1/2/3/6	-
1	AIB	C	27	1	-	0/2/3/6	-
1	AIB	D	27	1	-	1/2/3/6	-
1	AIB	C	28	1	-	1/2/3/6	-
1	AIB	H	28	1	-	1/2/3/6	-
1	DLE	D	21	1	-	0/5/6/8	-
1	DLY	C	30	1	-	1/6/7/9	-
1	AIB	E	22	1	-	0/2/3/6	-
1	DLE	E	6	1	-	1/5/6/8	-
1	DLE	G	18	1	-	0/5/6/8	-
1	AIB	G	10	1	-	1/2/3/6	-
1	DLE	H	15	1	-	4/5/6/8	-
1	DLY	F	7	1	-	2/6/7/9	-
1	AIB	A	5	1	-	1/2/3/6	-
1	DLE	H	9	1	-	4/5/6/8	-
1	DGL	C	8	1	-	0/4/7/9	-
1	DGL	E	20	1	-	0/4/7/9	-

*Continued on next page...*



*Continued from previous page...*

Mol	Type	Chain	Res	Link	Chirals	Torsions	Rings
1	AIB	B	22	1	-	0/2/3/6	-
1	DLY	E	25	1	-	0/6/7/9	-
1	AIB	H	27	1	-	2/2/3/6	-
1	DLE	D	6	1	-	0/5/6/8	-
1	AIB	C	17	1	-	2/2/3/6	-
1	AIB	D	5	1	-	1/2/3/6	-
1	DLY	H	19	1	-	0/6/7/9	-
1	DLE	A	24	1	-	4/5/6/8	-
1	DLY	B	7	1	-	3/6/7/9	-
1	DGL	E	8	1	-	0/4/7/9	-
1	DLY	D	30	1	-	3/6/7/9	-
1	DLE	D	24	1	-	0/5/6/8	-
1	AIB	C	22	1	-	0/2/3/6	-
1	DLE	G	6	1	-	1/5/6/8	-
1	AIB	B	16	1	-	1/2/3/6	-
1	DLY	F	30	1	-	3/6/7/9	-
1	DGL	B	14	1	-	0/4/7/9	-
1	DLE	E	3	1	-	1/5/6/8	-
1	DLE	H	18	1	-	3/5/6/8	-
1	AIB	A	26	1	-	1/2/3/6	-
1	DLY	C	13	1	-	1/6/7/9	-
1	DLY	D	13	1	-	2/6/7/9	-
1	DGL	H	14	1	-	0/4/7/9	-
1	DLY	H	30	1	-	2/6/7/9	-
1	DLE	E	18	1	-	0/5/6/8	-
1	AIB	D	26	1	-	0/2/3/6	-
1	DLE	C	12	1	-	3/5/6/8	-
1	DLE	H	12	1	-	0/5/6/8	-
1	AIB	A	16	1	-	1/2/3/6	-
1	AIB	D	22	1	-	0/2/3/6	-
1	DGL	D	2	1	-	2/4/7/9	-
1	DLE	E	15	1	-	0/5/6/8	-
1	AIB	H	4	1	-	1/2/3/6	-
1	AIB	E	10	1	-	1/2/3/6	-
1	AIB	A	22	1	-	0/2/3/6	-
1	AIB	H	26	1	-	1/2/3/6	-
1	BF7	B	29	1	-	4/5/6/8	0/1/1/1
1	DLE	F	3	1	-	1/5/6/8	-
1	DGL	D	20	1	-	0/4/7/9	-

*Continued on next page...*

*Continued from previous page...*

Mol	Type	Chain	Res	Link	Chirals	Torsions	Rings
1	AIB	G	17	1	-	2/2/3/6	-
1	DLE	F	24	1	-	0/5/6/8	-
1	DLY	F	25	1	-	0/6/7/9	-
1	DLY	E	7	1	-	2/6/7/9	-
1	AIB	B	10	1	-	1/2/3/6	-
1	BF7	E	29	1	-	0/5/6/8	0/1/1/1
1	AIB	F	27	1	-	1/2/3/6	-
1	AIB	C	11	1	-	1/2/3/6	-
1	DLY	A	19	1	-	0/6/7/9	-
1	AIB	G	23	1	-	2/2/3/6	-
1	DGL	B	8	1	-	0/4/7/9	-
1	DGL	E	14	1	-	0/4/7/9	-
1	DGL	D	14	1	-	0/4/7/9	-
1	AIB	C	4	1	-	1/2/3/6	-
1	DLY	B	19	1	-	0/6/7/9	-
1	DLE	F	12	1	-	0/5/6/8	-
1	DLE	B	21	1	-	0/5/6/8	-
1	DLE	G	21	1	-	0/5/6/8	-
1	DLE	E	9	1	-	4/5/6/8	-
1	DLE	A	3	1	-	2/5/6/8	-
1	DLE	D	3	1	-	1/5/6/8	-
1	DLE	F	18	1	-	0/5/6/8	-
1	DLE	A	18	1	-	0/5/6/8	-
1	AIB	H	23	1	-	2/2/3/6	-
1	DLY	D	25	1	-	3/6/7/9	-
1	AIB	B	28	1	-	1/2/3/6	-
1	BF7	C	29	1	-	0/5/6/8	0/1/1/1
1	DLY	G	7	1	-	2/6/7/9	-
1	BF7	D	29	1	-	0/5/6/8	0/1/1/1
1	DLE	H	3	1	-	1/5/6/8	-
1	DLE	D	18	1	-	0/5/6/8	-
1	DLE	A	12	1	-	0/5/6/8	-
1	DGL	C	14	1	-	0/4/7/9	-
1	DLE	B	3	1	-	1/5/6/8	-
1	DLE	A	21	1	-	0/5/6/8	-
1	AIB	F	22	1	-	0/2/3/6	-
1	DLE	G	3	1	-	1/5/6/8	-
1	DLE	E	24	1	-	1/5/6/8	-
1	DLE	C	15	1	-	0/5/6/8	-
1	AIB	D	10	1	-	1/2/3/6	-

*Continued on next page...*

*Continued from previous page...*

Mol	Type	Chain	Res	Link	Chirals	Torsions	Rings
1	DLE	D	12	1	-	0/5/6/8	-
1	AIB	A	23	1	-	1/2/3/6	-
1	DLE	C	21	1	-	0/5/6/8	-
1	DLE	B	24	1	-	2/5/6/8	-
1	DLE	G	24	1	-	1/5/6/8	-
1	AIB	F	10	1	-	0/2/3/6	-
1	DLY	B	13	1	-	1/6/7/9	-
1	AIB	E	26	1	-	1/2/3/6	-
1	DGL	G	14	1	-	0/4/7/9	-
1	AIB	A	28	1	-	1/2/3/6	-
1	DLY	G	30	1	-	1/6/7/9	-
1	DLE	C	6	1	-	1/5/6/8	-
1	DLY	H	7	1	-	1/6/7/9	-
1	DLY	F	13	1	-	1/6/7/9	-
1	AIB	F	16	1	-	1/2/3/6	-
1	AIB	E	28	1	-	1/2/3/6	-
1	AIB	D	28	1	-	1/2/3/6	-
1	DLY	E	30	1	-	1/6/7/9	-
1	DGL	F	20	1	-	0/4/7/9	-
1	DLE	D	9	1	-	0/5/6/8	-
1	DLE	B	18	1	-	0/5/6/8	-
1	DLE	F	15	1	-	0/5/6/8	-
1	AIB	F	11	1	-	1/2/3/6	-
1	AIB	E	17	1	-	2/2/3/6	-
1	DLE	G	9	1	-	0/5/6/8	-
1	DLY	F	19	1	-	0/6/7/9	-
1	AIB	H	10	1	-	0/2/3/6	-
1	DLY	E	13	1	-	1/6/7/9	-
1	AIB	F	4	1	-	1/2/3/6	-
1	AIB	E	23	1	-	1/2/3/6	-
1	DLY	A	25	1	-	1/6/7/9	-
1	AIB	B	26	1	-	1/2/3/6	-
1	AIB	B	17	1	-	2/2/3/6	-
1	DGL	F	2	1	-	1/4/7/9	-
1	AIB	G	27	1	-	2/2/3/6	-
1	DLY	A	30	1	-	3/6/7/9	-
1	DGL	C	2	1	-	1/4/7/9	-
1	DLE	H	6	1	-	0/5/6/8	-
1	AIB	B	23	1	-	1/2/3/6	-
1	DLE	D	15	1	-	0/5/6/8	-
1	BF7	F	29	1	-	1/5/6/8	0/1/1/1

*Continued on next page...*

Continued from previous page...

Mol	Type	Chain	Res	Link	Chirals	Torsions	Rings
1	AIB	C	23	1	-	1/2/3/6	-
1	DGL	H	2	1	-	2/4/7/9	-
1	AIB	F	17	1	-	2/2/3/6	-
1	AIB	C	26	1	-	1/2/3/6	-
1	DLY	H	25	1	-	2/6/7/9	-
1	DLY	C	25	1	-	1/6/7/9	-
1	DGL	H	20	1	-	0/4/7/9	-
1	DLY	G	25	1	-	1/6/7/9	-
1	AIB	D	4	1	-	1/2/3/6	-
1	DGL	B	20	1	-	0/4/7/9	-
1	DGL	C	20	1	-	0/4/7/9	-
1	DGL	F	8	1	-	0/4/7/9	-
1	AIB	H	16	1	-	0/2/3/6	-
1	DLE	E	12	1	-	3/5/6/8	-
1	DGL	G	20	1	-	0/4/7/9	-
1	DLE	F	21	1	-	0/5/6/8	-
1	AIB	F	28	1	-	1/2/3/6	-
1	AIB	G	22	1	-	0/2/3/6	-
1	BF7	G	29	1	-	0/5/6/8	0/1/1/1
1	DLE	A	9	1	-	0/5/6/8	-
1	AIB	A	10	1	-	1/2/3/6	-

All (10) bond length outliers are listed below:

Mol	Chain	Res	Type	Atoms	Z	Observed(Å)	Ideal(Å)
1	A	22	AIB	O-C	2.73	1.28	1.19
1	C	26	AIB	O-C	2.50	1.28	1.19
1	C	22	AIB	O-C	2.36	1.27	1.19
1	D	26	AIB	O-C	2.29	1.27	1.19
1	F	25	DLY	O-C	2.26	1.28	1.19
1	E	22	AIB	O-C	2.25	1.27	1.19
1	A	23	AIB	O-C	2.21	1.27	1.19
1	E	2	DGL	O-C	2.12	1.28	1.19
1	D	27	AIB	O-C	2.10	1.26	1.19
1	H	22	AIB	O-C	2.01	1.26	1.19

All (10) bond angle outliers are listed below:

Mol	Chain	Res	Type	Atoms	Z	Observed(°)	Ideal(°)
1	H	29	BF7	CG-CB-CA	-5.46	103.04	114.10
1	F	29	BF7	CG-CB-CA	-4.09	105.83	114.10

Continued on next page...

*Continued from previous page...*

Mol	Chain	Res	Type	Atoms	Z	Observed(°)	Ideal(°)
1	D	29	BF7	CG-CB-CA	-3.45	107.12	114.10
1	G	29	BF7	CG-CB-CA	-3.00	108.03	114.10
1	H	14	DGL	CB-CG-CD	2.59	119.15	113.59
1	A	29	BF7	CB-CA-C	-2.57	106.66	111.47
1	A	29	BF7	CB-CG-CD2	-2.17	116.59	120.91
1	G	29	BF7	CD2-CG-CD1	2.16	121.57	118.17
1	F	20	DGL	CB-CG-CD	2.13	118.17	113.59
1	F	29	BF7	CB-CA-C	2.06	115.33	111.47

There are no chirality outliers.

All (215) torsion outliers are listed below:

Mol	Chain	Res	Type	Atoms
1	B	2	DGL	N-CA-CB-CG
1	E	2	DGL	N-CA-CB-CG
1	E	2	DGL	C-CA-CB-CG
1	H	2	DGL	O-C-CA-CB
1	A	3	DLE	O-C-CA-CB
1	A	7	DLY	C-CA-CB-CG
1	B	7	DLY	C-CA-CB-CG
1	D	7	DLY	C-CA-CB-CG
1	E	7	DLY	C-CA-CB-CG
1	F	7	DLY	C-CA-CB-CG
1	G	7	DLY	C-CA-CB-CG
1	H	7	DLY	C-CA-CB-CG
1	E	9	DLE	N-CA-CB-CG
1	E	9	DLE	C-CA-CB-CG
1	F	9	DLE	N-CA-CB-CG
1	F	9	DLE	C-CA-CB-CG
1	H	9	DLE	N-CA-CB-CG
1	H	9	DLE	C-CA-CB-CG
1	C	12	DLE	N-CA-CB-CG
1	C	12	DLE	C-CA-CB-CG
1	E	12	DLE	N-CA-CB-CG
1	E	12	DLE	C-CA-CB-CG
1	D	13	DLY	C-CA-CB-CG
1	F	13	DLY	C-CA-CB-CG
1	H	15	DLE	N-CA-CB-CG
1	H	15	DLE	C-CA-CB-CG
1	A	17	AIB	O-C-CA-CB2
1	B	17	AIB	O-C-CA-CB2
1	D	17	AIB	O-C-CA-CB2

*Continued on next page...*

*Continued from previous page...*

Mol	Chain	Res	Type	Atoms
1	C	18	DLE	N-CA-CB-CG
1	C	18	DLE	C-CA-CB-CG
1	H	18	DLE	N-CA-CB-CG
1	H	18	DLE	C-CA-CB-CG
1	H	21	DLE	N-CA-CB-CG
1	H	21	DLE	C-CA-CB-CG
1	A	24	DLE	N-CA-CB-CG
1	A	24	DLE	C-CA-CB-CG
1	B	24	DLE	N-CA-CB-CG
1	B	24	DLE	C-CA-CB-CG
1	E	24	DLE	O-C-CA-CB
1	G	24	DLE	O-C-CA-CB
1	H	24	DLE	N-CA-CB-CG
1	H	24	DLE	C-CA-CB-CG
1	A	25	DLY	O-C-CA-CB
1	C	25	DLY	O-C-CA-CB
1	D	25	DLY	O-C-CA-CB
1	D	25	DLY	C-CA-CB-CG
1	G	25	DLY	O-C-CA-CB
1	G	26	AIB	O-C-CA-CB2
1	G	27	AIB	O-C-CA-CB2
1	F	29	BF7	O-C-CA-CB
1	D	30	DLY	N-CA-CB-CG
1	D	30	DLY	C-CA-CB-CG
1	F	30	DLY	N-CA-CB-CG
1	H	30	DLY	N-CA-CB-CG
1	H	30	DLY	C-CA-CB-CG
1	C	13	DLY	CE-CD-CG-CB
1	H	15	DLE	CA-CB-CG-CD2
1	H	21	DLE	CA-CB-CG-CD2
1	A	24	DLE	CA-CB-CG-CD1
1	H	15	DLE	CA-CB-CG-CD1
1	H	21	DLE	CA-CB-CG-CD1
1	A	24	DLE	CA-CB-CG-CD2
1	E	9	DLE	CA-CB-CG-CD2
1	F	9	DLE	CA-CB-CG-CD2
1	H	9	DLE	CA-CB-CG-CD2
1	H	18	DLE	CA-CB-CG-CD2
1	C	30	DLY	CA-CB-CG-CD
1	G	19	DLY	CA-CB-CG-CD
1	A	29	BF7	CA-CB-CG-CD1
1	G	30	DLY	CA-CB-CG-CD

*Continued on next page...*

*Continued from previous page...*

Mol	Chain	Res	Type	Atoms
1	A	29	BF7	CA-CB-CG-CD2
1	B	30	DLY	CE-CD-CG-CB
1	E	30	DLY	CA-CB-CG-CD
1	A	30	DLY	CE-CD-CG-CB
1	A	30	DLY	CA-CB-CG-CD
1	C	12	DLE	CA-CB-CG-CD2
1	B	2	DGL	C-CA-CB-CG
1	B	13	DLY	C-CA-CB-CG
1	H	13	DLY	C-CA-CB-CG
1	F	30	DLY	C-CA-CB-CG
1	G	13	DLY	CE-CD-CG-CB
1	C	7	DLY	CE-CD-CG-CB
1	E	12	DLE	CA-CB-CG-CD2
1	A	2	DGL	CA-CB-CG-CD
1	G	12	DLE	CA-CB-CG-CD1
1	D	30	DLY	CA-CB-CG-CD
1	H	3	DLE	CA-CB-CG-CD1
1	E	9	DLE	CA-CB-CG-CD1
1	G	3	DLE	CA-CB-CG-CD1
1	A	3	DLE	CA-CB-CG-CD1
1	B	29	BF7	CA-CB-CG-CD1
1	F	3	DLE	CA-CB-CG-CD1
1	F	9	DLE	CA-CB-CG-CD1
1	B	29	BF7	CA-CB-CG-CD2
1	H	25	DLY	CE-CD-CG-CB
1	C	18	DLE	CA-CB-CG-CD2
1	A	4	AIB	O-C-CA-CB2
1	B	4	AIB	O-C-CA-CB2
1	C	4	AIB	O-C-CA-CB2
1	D	4	AIB	O-C-CA-CB2
1	E	4	AIB	O-C-CA-CB2
1	F	4	AIB	O-C-CA-CB2
1	G	4	AIB	O-C-CA-CB2
1	H	4	AIB	O-C-CA-CB2
1	B	11	AIB	O-C-CA-CB2
1	C	11	AIB	O-C-CA-CB2
1	E	11	AIB	O-C-CA-CB2
1	C	17	AIB	O-C-CA-CB2
1	E	17	AIB	O-C-CA-CB2
1	F	17	AIB	O-C-CA-CB2
1	G	17	AIB	O-C-CA-CB2
1	H	17	AIB	O-C-CA-CB2

*Continued on next page...*

*Continued from previous page...*

Mol	Chain	Res	Type	Atoms
1	B	23	AIB	O-C-CA-CB2
1	C	23	AIB	O-C-CA-CB2
1	D	23	AIB	O-C-CA-CB2
1	F	23	AIB	O-C-CA-CB2
1	G	23	AIB	O-C-CA-CB2
1	H	23	AIB	O-C-CA-CB2
1	A	26	AIB	O-C-CA-CB2
1	A	27	AIB	O-C-CA-CB2
1	E	27	AIB	O-C-CA-CB2
1	H	27	AIB	O-C-CA-CB2
1	A	28	AIB	O-C-CA-CB2
1	B	28	AIB	O-C-CA-CB2
1	D	28	AIB	O-C-CA-CB2
1	H	28	AIB	O-C-CA-CB2
1	G	13	DLY	CG-CD-CE-NZ
1	A	30	DLY	CG-CD-CE-NZ
1	A	2	DGL	N-CA-CB-CG
1	C	2	DGL	N-CA-CB-CG
1	D	2	DGL	N-CA-CB-CG
1	F	2	DGL	N-CA-CB-CG
1	G	2	DGL	N-CA-CB-CG
1	A	7	DLY	CE-CD-CG-CB
1	B	29	BF7	N-CA-CB-CG
1	E	3	DLE	CA-CB-CG-CD1
1	C	3	DLE	CA-CB-CG-CD1
1	A	13	DLY	CG-CD-CE-NZ
1	F	30	DLY	CG-CD-CE-NZ
1	E	6	DLE	CA-CB-CG-CD1
1	A	6	DLE	CA-CB-CG-CD1
1	B	3	DLE	CA-CB-CG-CD1
1	A	13	DLY	CE-CD-CG-CB
1	F	7	DLY	CE-CD-CG-CB
1	C	6	DLE	CA-CB-CG-CD1
1	B	29	BF7	C-CA-CB-CG
1	H	29	BF7	C-CA-CB-CG
1	H	9	DLE	CA-CB-CG-CD1
1	D	2	DGL	C-CA-CB-CG
1	E	7	DLY	CA-CB-CG-CD
1	H	25	DLY	CA-CB-CG-CD
1	A	13	DLY	CA-CB-CG-CD
1	G	7	DLY	CA-CB-CG-CD
1	B	7	DLY	CG-CD-CE-NZ

*Continued on next page...*



*Continued from previous page...*

Mol	Chain	Res	Type	Atoms
1	D	7	DLY	CG-CD-CE-NZ
1	C	19	DLY	CA-CB-CG-CD
1	E	13	DLY	CE-CD-CG-CB
1	G	6	DLE	CA-CB-CG-CD1
1	D	3	DLE	CA-CB-CG-CD1
1	A	5	AIB	O-C-CA-CB2
1	B	5	AIB	O-C-CA-CB2
1	C	5	AIB	O-C-CA-CB2
1	D	5	AIB	O-C-CA-CB2
1	E	5	AIB	O-C-CA-CB2
1	G	5	AIB	O-C-CA-CB2
1	H	5	AIB	O-C-CA-CB2
1	A	10	AIB	O-C-CA-CB2
1	B	10	AIB	O-C-CA-CB2
1	C	10	AIB	O-C-CA-CB2
1	D	10	AIB	O-C-CA-CB2
1	E	10	AIB	O-C-CA-CB2
1	G	10	AIB	O-C-CA-CB2
1	A	11	AIB	O-C-CA-CB2
1	D	11	AIB	O-C-CA-CB2
1	F	11	AIB	O-C-CA-CB2
1	G	11	AIB	O-C-CA-CB2
1	H	11	AIB	O-C-CA-CB2
1	A	16	AIB	O-C-CA-CB2
1	B	16	AIB	O-C-CA-CB2
1	C	16	AIB	O-C-CA-CB2
1	D	16	AIB	O-C-CA-CB2
1	E	16	AIB	O-C-CA-CB2
1	F	16	AIB	O-C-CA-CB2
1	G	16	AIB	O-C-CA-CB2
1	B	17	AIB	O-C-CA-CB1
1	C	17	AIB	O-C-CA-CB1
1	D	17	AIB	O-C-CA-CB1
1	E	17	AIB	O-C-CA-CB1
1	F	17	AIB	O-C-CA-CB1
1	G	17	AIB	O-C-CA-CB1
1	H	17	AIB	O-C-CA-CB1
1	A	23	AIB	O-C-CA-CB2
1	E	23	AIB	O-C-CA-CB2
1	G	23	AIB	O-C-CA-CB1
1	H	23	AIB	O-C-CA-CB1
1	B	26	AIB	O-C-CA-CB2

*Continued on next page...*

*Continued from previous page...*

Mol	Chain	Res	Type	Atoms
1	C	26	AIB	O-C-CA-CB2
1	E	26	AIB	O-C-CA-CB2
1	G	26	AIB	O-C-CA-CB1
1	H	26	AIB	O-C-CA-CB2
1	D	27	AIB	O-C-CA-CB2
1	E	27	AIB	O-C-CA-CB1
1	F	27	AIB	O-C-CA-CB2
1	G	27	AIB	O-C-CA-CB1
1	H	27	AIB	O-C-CA-CB1
1	C	28	AIB	O-C-CA-CB2
1	E	28	AIB	O-C-CA-CB2
1	F	28	AIB	O-C-CA-CB2
1	G	28	AIB	O-C-CA-CB2
1	D	13	DLY	CG-CD-CE-NZ
1	B	7	DLY	CE-CD-CG-CB
1	H	2	DGL	N-CA-CB-CG
1	D	7	DLY	N-CA-CB-CG
1	D	25	DLY	CE-CD-CG-CB

There are no ring outliers.

22 monomers are involved in 18 short contacts:

Mol	Chain	Res	Type	Clashes	Symm-Clashes
1	E	2	DGL	2	0
1	A	13	DLY	2	0
1	D	7	DLY	2	0
1	H	24	DLE	1	0
1	G	13	DLY	1	0
1	G	18	DLE	1	0
1	G	10	AIB	1	0
1	E	20	DGL	1	0
1	H	27	AIB	1	0
1	F	30	DLY	2	0
1	H	18	DLE	1	0
1	H	30	DLY	1	0
1	F	25	DLY	1	0
1	E	29	BF7	2	0
1	G	23	AIB	1	0
1	E	9	DLE	1	0
1	D	25	DLY	1	0
1	D	10	AIB	1	0
1	B	24	DLE	1	0

*Continued on next page...*

Continued from previous page...

Mol	Chain	Res	Type	Clashes	Symm-Clashes
1	E	30	DLY	2	0
1	A	30	DLY	2	0
1	F	29	BF7	1	0

## 5.5 Carbohydrates [i](#)

There are no monosaccharides in this entry.

## 5.6 Ligand geometry [i](#)

32 ligands are modelled in this entry.

In the following table, the Counts columns list the number of bonds (or angles) for which Mogul statistics could be retrieved, the number of bonds (or angles) that are observed in the model and the number of bonds (or angles) that are defined in the Chemical Component Dictionary. The Link column lists molecule types, if any, to which the group is linked. The Z score for a bond length (or angle) is the number of standard deviations the observed value is removed from the expected value. A bond length (or angle) with  $|Z| > 2$  is considered an outlier worth inspection. RMSZ is the root-mean-square of all Z scores of the bond lengths (or angles).

Mol	Type	Chain	Res	Link	Bond lengths			Bond angles		
					Counts	RMSZ	$\# Z  > 2$	Counts	RMSZ	$\# Z  > 2$
5	PEG	E	106	-	6,6,6	0.19	0	5,5,5	0.21	0
3	EDO	B	104	-	3,3,3	0.10	0	2,2,2	0.24	0
5	PEG	A	105	-	6,6,6	0.28	0	5,5,5	0.21	0
3	EDO	B	102	-	3,3,3	0.06	0	2,2,2	0.12	0
3	EDO	G	102	-	3,3,3	0.08	0	2,2,2	0.16	0
5	PEG	E	105	-	6,6,6	0.14	0	5,5,5	0.10	0
2	PGE	A	101	-	9,9,9	0.18	0	8,8,8	0.16	0
8	BO3	C	104	-	3,3,3	0.12	0	3,3,3	0.72	0
5	PEG	E	103	-	6,6,6	0.27	0	5,5,5	0.23	0
5	PEG	G	101	-	6,6,6	0.18	0	5,5,5	0.09	0
3	EDO	D	101	-	3,3,3	0.12	0	2,2,2	0.26	0
2	PGE	A	102	-	9,9,9	0.23	0	8,8,8	0.11	0
3	EDO	D	103	-	3,3,3	0.19	0	2,2,2	0.34	0
3	EDO	E	109	-	3,3,3	0.09	0	2,2,2	0.14	0
5	PEG	B	103	-	6,6,6	0.24	0	5,5,5	0.18	0
5	PEG	F	101	-	6,6,6	0.34	0	5,5,5	0.28	0
3	EDO	A	103	-	3,3,3	0.09	0	2,2,2	0.19	0
8	BO3	E	108	-	3,3,3	0.22	0	3,3,3	0.27	0
7	PG6	C	102	-	17,17,17	0.29	0	16,16,16	0.32	0
3	EDO	E	101	-	3,3,3	0.18	0	2,2,2	0.32	0

Mol	Type	Chain	Res	Link	Bond lengths			Bond angles		
					Counts	RMSZ	# Z  > 2	Counts	RMSZ	# Z  > 2
3	EDO	D	102	-	3,3,3	0.13	0	2,2,2	0.25	0
6	PG0	B	101	-	7,7,7	0.32	0	6,6,6	0.38	0
3	EDO	C	101	-	3,3,3	0.06	0	2,2,2	0.17	0
3	EDO	E	107	-	3,3,3	0.09	0	2,2,2	0.15	0
9	PG4	E	102	-	12,12,12	0.22	0	11,11,11	0.17	0
3	EDO	E	104	-	3,3,3	0.08	0	2,2,2	0.36	0
4	SO4	A	104	-	4,4,4	0.38	0	6,6,6	0.11	0
5	PEG	A	106	-	6,6,6	0.26	0	5,5,5	0.17	0
3	EDO	C	105	-	3,3,3	0.08	0	2,2,2	0.05	0
4	SO4	C	103	-	4,4,4	0.41	0	6,6,6	0.22	0
3	EDO	A	107	-	3,3,3	0.20	0	2,2,2	0.49	0
4	SO4	D	104	-	4,4,4	0.35	0	6,6,6	0.07	0

In the following table, the Chirals column lists the number of chiral outliers, the number of chiral centers analysed, the number of these observed in the model and the number defined in the Chemical Component Dictionary. Similar counts are reported in the Torsion and Rings columns. '-' means no outliers of that kind were identified.

Mol	Type	Chain	Res	Link	Chirals	Torsions	Rings
5	PEG	E	106	-	-	2/4/4/4	-
3	EDO	B	104	-	-	0/1/1/1	-
5	PEG	A	105	-	-	2/4/4/4	-
3	EDO	B	102	-	-	1/1/1/1	-
3	EDO	G	102	-	-	1/1/1/1	-
5	PEG	E	105	-	-	3/4/4/4	-
2	PGE	A	101	-	-	2/7/7/7	-
5	PEG	E	103	-	-	3/4/4/4	-
5	PEG	G	101	-	-	3/4/4/4	-
3	EDO	D	101	-	-	1/1/1/1	-
2	PGE	A	102	-	-	4/7/7/7	-
3	EDO	D	103	-	-	1/1/1/1	-
3	EDO	E	109	-	-	0/1/1/1	-
5	PEG	B	103	-	-	2/4/4/4	-
5	PEG	F	101	-	-	3/4/4/4	-
3	EDO	A	103	-	-	1/1/1/1	-
7	PG6	C	102	-	-	8/15/15/15	-
3	EDO	E	101	-	-	1/1/1/1	-
3	EDO	D	102	-	-	1/1/1/1	-
6	PG0	B	101	-	-	2/5/5/5	-
3	EDO	C	101	-	-	1/1/1/1	-

Continued on next page...

*Continued from previous page...*

Mol	Type	Chain	Res	Link	Chirals	Torsions	Rings
3	EDO	E	107	-	-	1/1/1/1	-
9	PG4	E	102	-	-	4/10/10/10	-
3	EDO	E	104	-	-	1/1/1/1	-
5	PEG	A	106	-	-	3/4/4/4	-
3	EDO	C	105	-	-	0/1/1/1	-
3	EDO	A	107	-	-	1/1/1/1	-

There are no bond length outliers.

There are no bond angle outliers.

There are no chirality outliers.

All (52) torsion outliers are listed below:

Mol	Chain	Res	Type	Atoms
3	A	103	EDO	O1-C1-C2-O2
5	A	105	PEG	O1-C1-C2-O2
5	E	106	PEG	O2-C3-C4-O4
7	C	102	PG6	O2-C4-C5-O3
7	C	102	PG6	O1-C2-C3-O2
5	E	103	PEG	O1-C1-C2-O2
5	E	105	PEG	O2-C3-C4-O4
9	E	102	PG4	O2-C3-C4-O3
5	F	101	PEG	O1-C1-C2-O2
6	B	101	PG0	OTT-C1-C2-O1
5	A	106	PEG	O1-C1-C2-O2
5	A	106	PEG	O2-C3-C4-O4
5	B	103	PEG	O2-C3-C4-O4
5	G	101	PEG	O2-C3-C4-O4
5	B	103	PEG	O1-C1-C2-O2
3	D	103	EDO	O1-C1-C2-O2
3	E	101	EDO	O1-C1-C2-O2
3	E	104	EDO	O1-C1-C2-O2
9	E	102	PG4	O3-C5-C6-O4
5	E	103	PEG	O2-C3-C4-O4
5	G	101	PEG	O1-C1-C2-O2
2	A	102	PGE	O3-C5-C6-O4
3	B	102	EDO	O1-C1-C2-O2
3	E	107	EDO	O1-C1-C2-O2
2	A	101	PGE	O3-C5-C6-O4
5	F	101	PEG	C4-C3-O2-C2
9	E	102	PG4	C3-C4-O3-C5

*Continued on next page...*

*Continued from previous page...*

Mol	Chain	Res	Type	Atoms
7	C	102	PG6	C10-C11-O6-C12
5	A	105	PEG	C1-C2-O2-C3
5	E	106	PEG	C1-C2-O2-C3
5	E	103	PEG	C4-C3-O2-C2
2	A	102	PGE	C1-C2-O2-C3
7	C	102	PG6	C6-C7-O4-C8
5	E	105	PEG	O1-C1-C2-O2
2	A	101	PGE	C6-C5-O3-C4
5	G	101	PEG	C4-C3-O2-C2
3	D	102	EDO	O1-C1-C2-O2
7	C	102	PG6	O5-C10-C11-O6
5	A	106	PEG	C1-C2-O2-C3
9	E	102	PG4	C1-C2-O2-C3
3	A	107	EDO	O1-C1-C2-O2
3	G	102	EDO	O1-C1-C2-O2
7	C	102	PG6	C9-C8-O4-C7
5	E	105	PEG	C4-C3-O2-C2
7	C	102	PG6	O4-C8-C9-O5
3	C	101	EDO	O1-C1-C2-O2
3	D	101	EDO	O1-C1-C2-O2
5	F	101	PEG	O2-C3-C4-O4
6	B	101	PG0	O1-C3-C4-O2
2	A	102	PGE	C6-C5-O3-C4
2	A	102	PGE	O2-C3-C4-O3
7	C	102	PG6	C4-C5-O3-C6

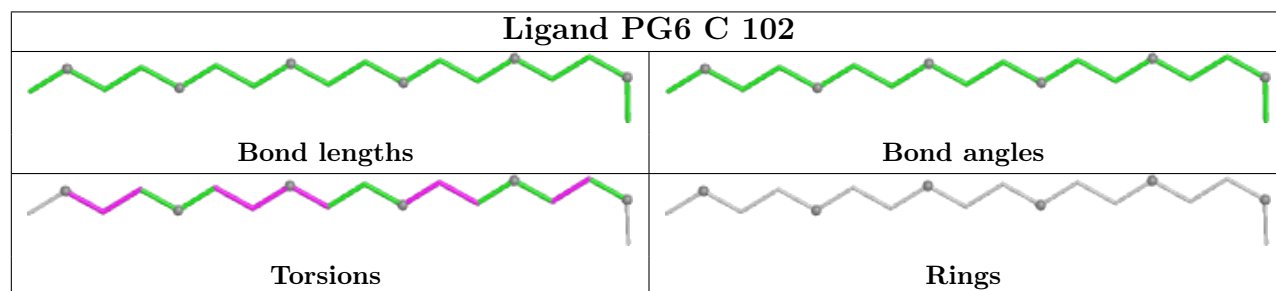
There are no ring outliers.

3 monomers are involved in 4 short contacts:

Mol	Chain	Res	Type	Clashes	Symm-Clashes
3	B	104	EDO	2	0
3	D	103	EDO	1	0
4	A	104	SO4	1	0

The following is a two-dimensional graphical depiction of Mogul quality analysis of bond lengths, bond angles, torsion angles, and ring geometry for all instances of the Ligand of Interest. In addition, ligands with molecular weight > 250 and outliers as shown on the validation Tables will also be included. For torsion angles, if less than 5% of the Mogul distribution of torsion angles is within 10 degrees of the torsion angle in question, then that torsion angle is considered an outlier. Any bond that is central to one or more torsion angles identified as an outlier by Mogul will be highlighted in the graph. For rings, the root-mean-square deviation (RMSD) between the ring in question and similar rings identified by Mogul is calculated over all ring torsion angles. If the

average RMSD is greater than 60 degrees and the minimal RMSD between the ring in question and any Mogul-identified rings is also greater than 60 degrees, then that ring is considered an outlier. The outliers are highlighted in purple. The color gray indicates Mogul did not find sufficient equivalents in the CSD to analyse the geometry.



## 5.7 Other polymers [i](#)

There are no such residues in this entry.

## 5.8 Polymer linkage issues [i](#)

There are no chain breaks in this entry.

## 6 Fit of model and data [i](#)

### 6.1 Protein, DNA and RNA chains [i](#)

In the following table, the column labelled ‘#RSRZ> 2’ contains the number (and percentage) of RSRZ outliers, followed by percent RSRZ outliers for the chain as percentile scores relative to all X-ray entries and entries of similar resolution. The OWAB column contains the minimum, median, 95<sup>th</sup> percentile and maximum values of the occupancy-weighted average B-factor per residue. The column labelled ‘Q< 0.9’ lists the number of (and percentage) of residues with an average occupancy less than 0.9.

Mol	Chain	Analysed	<RSRZ>	#RSRZ>2	OWAB(Å <sup>2</sup> )	Q<0.9
1	A	2/33 (6%)	0.57	0 100 100	73, 73, 73, 88	0
1	B	1/33 (3%)	0.03	0 100 100	60, 60, 60, 60	0
1	C	1/33 (3%)	1.05	0 100 100	88, 88, 88, 88	0
1	D	0/33	-	-	-	-
1	E	1/33 (3%)	0.60	0 100 100	91, 91, 91, 91	0
1	F	0/33	-	-	-	-
1	G	1/33 (3%)	0.13	0 100 100	78, 78, 78, 78	0
1	H	0/33	-	-	-	-
All	All	6/264 (2%)	0.49	0 100 100	60, 78, 88, 91	0

There are no RSRZ outliers to report.

### 6.2 Non-standard residues in protein, DNA, RNA chains [i](#)

In the following table, the Atoms column lists the number of modelled atoms in the group and the number defined in the chemical component dictionary. The B-factors column lists the minimum, median, 95<sup>th</sup> percentile and maximum values of B factors of atoms in the group. The column labelled ‘Q< 0.9’ lists the number of atoms with occupancy less than 0.9.

Mol	Type	Chain	Res	Atoms	RSCC	RSR	B-factors(Å <sup>2</sup> )	Q<0.9
1	DLY	E	30	9/10	0.51	0.28	85,99,104,105	0
1	DGL	F	2	9/10	0.56	0.27	94,98,104,107	0
1	DGL	H	2	9/10	0.65	0.32	97,109,113,114	0
1	DGL	B	2	9/10	0.67	0.21	71,79,94,98	0
1	DGL	E	2	9/10	0.74	0.35	84,88,96,106	0
1	DGL	D	2	9/10	0.74	0.27	80,92,104,106	0
1	DLY	A	30	9/10	0.81	0.22	43,53,72,74	0
1	DGL	G	2	9/10	0.81	0.25	81,87,101,101	0
1	DLY	H	30	9/10	0.81	0.19	68,72,80,82	0

*Continued on next page...*



*Continued from previous page...*

Mol	Type	Chain	Res	Atoms	RSCC	RSR	B-factors( $\text{\AA}^2$ )	Q<0.9
1	DLY	F	30	9/10	0.82	0.22	61,70,85,86	0
1	DGL	C	2	9/10	0.82	0.25	80,86,95,95	0
1	BF7	H	29	12/13	0.87	0.17	57,63,76,77	0
1	BF7	D	29	12/13	0.88	0.13	51,54,58,59	1
1	AIB	F	4	6/7	0.88	0.18	80,83,86,88	0
1	DGL	B	14	9/10	0.88	0.15	35,36,55,56	0
1	DLE	F	3	8/9	0.89	0.23	92,95,100,102	0
1	AIB	H	28	6/7	0.89	0.18	48,51,56,65	0
1	DLE	A	3	8/9	0.89	0.13	61,69,71,81	0
1	DLY	D	7	9/10	0.89	0.16	51,59,88,90	0
1	DGL	A	2	9/10	0.90	0.14	76,82,87,95	0
1	BF7	B	29	12/13	0.90	0.15	37,48,57,59	0
1	DLY	H	7	9/10	0.90	0.18	56,62,84,87	0
1	DLY	G	30	9/10	0.90	0.22	67,79,99,99	0
1	DLE	E	3	8/9	0.90	0.13	69,70,73,75	0
1	DGL	B	8	9/10	0.91	0.15	52,55,73,77	0
1	DLE	D	12	8/9	0.91	0.19	35,41,47,48	0
1	AIB	D	28	6/7	0.92	0.14	42,46,48,51	0
1	DLY	F	7	9/10	0.92	0.16	52,62,85,87	0
1	AIB	H	5	6/7	0.92	0.11	60,61,64,67	0
1	DLE	D	6	8/9	0.92	0.17	52,59,62,64	0
1	DGL	D	8	9/10	0.92	0.13	44,50,65,68	0
1	AIB	G	10	6/7	0.92	0.19	42,42,42,45	0
1	DLY	C	30	9/10	0.92	0.16	48,62,82,88	0
1	DLY	C	7	9/10	0.92	0.19	47,52,77,81	0
1	AIB	F	5	6/7	0.92	0.17	54,65,67,76	0
1	DLE	F	18	8/9	0.92	0.12	30,32,33,34	0
1	DLY	H	25	9/10	0.92	0.18	37,42,52,54	0
1	AIB	G	28	6/7	0.93	0.13	36,37,37,40	0
1	DLY	C	13	9/10	0.93	0.26	37,41,75,79	0
1	DLY	F	13	9/10	0.93	0.12	38,41,65,70	0
1	DGL	F	8	9/10	0.93	0.12	45,54,70,74	0
1	DGL	C	14	9/10	0.93	0.17	33,37,50,58	0
1	DLE	B	18	8/9	0.93	0.14	28,32,35,36	0
1	DLY	B	30	9/10	0.93	0.12	41,50,58,64	0
1	DGL	H	8	9/10	0.93	0.17	51,57,66,71	0
1	DLY	D	30	9/10	0.93	0.24	53,64,77,79	0
1	DGL	G	20	9/10	0.93	0.14	31,37,59,63	0
1	AIB	A	5	6/7	0.93	0.20	54,55,57,59	0
1	AIB	D	26	6/7	0.93	0.11	37,38,40,41	0
1	DLY	B	7	9/10	0.93	0.15	50,60,79,83	0
1	AIB	C	22	6/7	0.94	0.13	26,28,29,30	0

*Continued on next page...*

*Continued from previous page...*

Mol	Type	Chain	Res	Atoms	RSCC	RSR	B-factors( $\text{\AA}^2$ )	Q<0.9
1	AIB	G	22	6/7	0.94	0.11	31,33,33,35	0
1	DLE	H	24	8/9	0.94	0.19	30,35,43,51	0
1	DLY	C	25	9/10	0.94	0.11	29,30,34,36	0
1	DLY	D	25	9/10	0.94	0.11	38,42,56,56	0
1	DLE	C	12	8/9	0.94	0.11	32,34,36,37	0
1	DLY	G	7	9/10	0.94	0.18	48,53,84,93	0
1	AIB	E	26	6/7	0.94	0.10	35,38,40,45	0
1	AIB	E	27	6/7	0.94	0.10	37,40,41,43	0
1	AIB	G	27	6/7	0.94	0.11	34,37,37,37	0
1	AIB	C	28	6/7	0.94	0.11	37,40,46,48	0
1	DLE	E	6	8/9	0.94	0.12	49,52,54,56	0
1	AIB	F	28	6/7	0.94	0.13	53,56,60,76	0
1	DLY	E	13	9/10	0.94	0.20	39,45,70,78	0
1	DGL	A	8	9/10	0.94	0.13	42,48,74,83	0
1	DLE	F	6	8/9	0.94	0.15	57,60,69,76	0
1	AIB	A	4	6/7	0.94	0.13	54,59,60,60	0
1	BF7	F	29	12/13	0.94	0.10	55,58,60,61	1
1	DGL	G	14	9/10	0.94	0.12	35,39,54,55	0
1	AIB	D	17	6/7	0.94	0.10	29,30,31,31	0
1	AIB	G	17	6/7	0.94	0.09	32,33,34,35	0
1	AIB	B	4	6/7	0.94	0.18	62,68,73,75	0
1	DLE	D	18	8/9	0.94	0.14	29,31,33,35	0
1	DLE	G	3	8/9	0.94	0.12	65,66,69,75	0
1	DLY	B	19	9/10	0.94	0.12	29,33,56,57	0
1	DLY	F	19	9/10	0.94	0.10	32,35,44,51	0
1	AIB	G	4	6/7	0.94	0.13	59,61,62,62	0
1	DLE	D	9	8/9	0.95	0.17	44,48,55,59	0
1	DLY	D	19	9/10	0.95	0.08	27,31,35,38	0
1	DLE	F	9	8/9	0.95	0.16	39,47,50,51	0
1	DLY	G	19	9/10	0.95	0.10	34,37,55,56	0
1	DGL	F	20	9/10	0.95	0.11	33,36,51,57	0
1	AIB	B	10	6/7	0.95	0.10	43,44,46,46	0
1	DLE	G	21	8/9	0.95	0.10	30,31,32,32	0
1	DLE	H	21	8/9	0.95	0.17	31,35,39,41	0
1	AIB	D	10	6/7	0.95	0.10	45,46,47,48	0
1	AIB	F	22	6/7	0.95	0.10	29,30,32,32	0
1	AIB	E	10	6/7	0.95	0.10	40,41,43,45	0
1	DLE	B	24	8/9	0.95	0.15	33,37,47,57	0
1	DLE	D	24	8/9	0.95	0.19	34,36,38,47	0
1	DLE	B	3	8/9	0.95	0.11	78,80,83,85	0
1	AIB	H	10	6/7	0.95	0.09	41,45,46,47	0
1	DLE	A	12	8/9	0.95	0.12	35,37,42,44	0

*Continued on next page...*

*Continued from previous page...*

Mol	Type	Chain	Res	Atoms	RSCC	RSR	B-factors( $\text{\AA}^2$ )	Q<0.9
1	DLE	B	12	8/9	0.95	0.18	37,39,43,46	0
1	AIB	C	26	6/7	0.95	0.12	32,33,34,34	0
1	DLE	A	6	8/9	0.95	0.10	49,51,54,57	0
1	DLY	E	7	9/10	0.95	0.25	47,56,77,82	0
1	AIB	C	27	6/7	0.95	0.13	34,37,40,41	0
1	DLE	B	6	8/9	0.95	0.13	57,61,69,72	0
1	DLE	C	6	8/9	0.95	0.12	45,47,48,48	0
1	AIB	D	4	6/7	0.95	0.13	62,65,66,75	0
1	DLY	G	13	9/10	0.95	0.12	36,40,67,69	0
1	AIB	D	5	6/7	0.95	0.09	59,61,63,64	0
1	DLE	D	3	8/9	0.95	0.11	74,84,88,88	0
1	DGL	E	14	9/10	0.95	0.10	30,37,43,53	0
1	DGL	C	8	9/10	0.95	0.12	44,49,60,66	0
1	DGL	H	14	9/10	0.95	0.09	35,36,44,48	0
1	DLE	B	15	8/9	0.95	0.14	34,35,39,39	0
1	DLE	F	15	8/9	0.95	0.16	31,33,34,37	0
1	AIB	C	16	6/7	0.95	0.09	32,33,34,34	0
1	AIB	G	16	6/7	0.95	0.10	33,35,35,37	0
1	AIB	H	16	6/7	0.95	0.11	30,34,35,36	0
1	DLE	G	6	8/9	0.95	0.12	47,53,53,58	0
1	DGL	E	8	9/10	0.95	0.11	42,48,67,71	0
1	DLE	H	6	8/9	0.95	0.14	58,62,65,67	0
1	AIB	G	5	6/7	0.95	0.09	47,56,58,58	0
1	DLE	C	9	8/9	0.95	0.10	38,39,40,40	0
1	DLE	E	12	8/9	0.96	0.13	34,38,41,43	0
1	DLE	F	24	8/9	0.96	0.10	29,33,36,40	0
1	DLE	F	12	8/9	0.96	0.17	38,39,44,46	0
1	DLE	A	18	8/9	0.96	0.09	31,32,40,40	0
1	DLY	B	13	9/10	0.96	0.10	31,38,58,63	0
1	DLY	E	25	9/10	0.96	0.09	35,37,46,51	0
1	DLY	F	25	9/10	0.96	0.09	33,38,55,59	0
1	DLY	G	25	9/10	0.96	0.11	30,31,37,40	0
1	DLE	C	18	8/9	0.96	0.10	29,30,33,36	0
1	AIB	A	26	6/7	0.96	0.13	32,34,36,36	0
1	DGL	G	8	9/10	0.96	0.14	46,49,61,68	0
1	AIB	C	4	6/7	0.96	0.09	55,57,60,60	0
1	DLY	A	19	9/10	0.96	0.16	34,38,68,78	0
1	DLE	B	9	8/9	0.96	0.20	42,47,51,52	0
1	AIB	D	27	6/7	0.96	0.09	37,41,42,43	0
1	AIB	B	5	6/7	0.96	0.13	52,59,61,63	0
1	AIB	F	27	6/7	0.96	0.17	46,51,54,60	0
1	DLY	E	19	9/10	0.96	0.13	35,39,73,79	0

*Continued on next page...*

*Continued from previous page...*

Mol	Type	Chain	Res	Atoms	RSCC	RSR	B-factors( $\text{\AA}^2$ )	Q<0.9
1	AIB	H	27	6/7	0.96	0.10	47,52,55,55	0
1	AIB	A	28	6/7	0.96	0.14	36,39,40,42	0
1	AIB	B	28	6/7	0.96	0.08	40,42,44,46	0
1	DLE	C	3	8/9	0.96	0.08	63,65,67,73	0
1	AIB	A	11	6/7	0.96	0.10	37,38,39,42	0
1	DLY	H	19	9/10	0.96	0.11	29,32,40,45	0
1	DGL	A	20	9/10	0.96	0.13	34,36,58,64	0
1	DGL	B	20	9/10	0.96	0.10	31,34,49,53	0
1	DGL	E	20	9/10	0.96	0.11	33,36,57,69	0
1	BF7	C	29	12/13	0.96	0.13	42,44,46,47	1
1	AIB	D	11	6/7	0.96	0.09	40,42,43,43	0
1	BF7	E	29	12/13	0.96	0.15	38,53,77,94	1
1	AIB	F	11	6/7	0.96	0.10	39,43,44,45	0
1	BF7	G	29	12/13	0.96	0.10	35,41,56,63	1
1	DLE	D	21	8/9	0.96	0.15	28,30,34,37	0
1	AIB	G	11	6/7	0.96	0.12	33,36,38,40	0
1	AIB	H	11	6/7	0.96	0.10	44,45,45,46	0
1	AIB	E	5	6/7	0.96	0.14	46,55,56,59	0
1	AIB	D	22	6/7	0.96	0.12	28,30,33,34	0
1	DLE	G	9	8/9	0.96	0.09	38,42,46,46	0
1	DLE	H	9	8/9	0.96	0.16	45,51,55,56	0
1	AIB	G	23	6/7	0.96	0.09	31,32,34,35	0
1	AIB	A	10	6/7	0.96	0.15	39,41,41,42	0
1	DLY	B	25	9/10	0.97	0.14	33,35,44,50	0
1	DLE	E	18	8/9	0.97	0.08	32,33,37,38	0
1	DGL	F	14	9/10	0.97	0.14	31,37,49,50	0
1	DLE	G	18	8/9	0.97	0.09	29,30,33,33	0
1	DLE	H	18	8/9	0.97	0.16	30,32,42,42	0
1	DLE	H	12	8/9	0.97	0.15	37,40,44,47	0
1	DLY	A	13	9/10	0.97	0.14	36,40,64,72	0
1	DLY	C	19	9/10	0.97	0.08	31,35,54,58	0
1	DLE	A	15	8/9	0.97	0.10	32,35,39,43	0
1	AIB	C	10	6/7	0.97	0.15	38,39,39,40	0
1	DLE	D	15	8/9	0.97	0.13	32,35,38,39	0
1	AIB	F	26	6/7	0.97	0.08	38,41,41,45	0
1	AIB	H	26	6/7	0.97	0.09	41,44,46,48	0
1	AIB	B	27	6/7	0.97	0.13	37,40,41,41	0
1	DLE	E	15	8/9	0.97	0.08	30,31,33,33	0
1	DLY	A	7	9/10	0.97	0.22	46,54,92,102	0
1	DLE	H	15	8/9	0.97	0.15	32,37,40,40	0
1	AIB	B	11	6/7	0.97	0.07	35,40,41,42	0
1	DGL	D	20	9/10	0.97	0.07	29,32,38,39	0

*Continued on next page...*

*Continued from previous page...*

Mol	Type	Chain	Res	Atoms	RSCC	RSR	B-factors( $\text{\AA}^2$ )	Q<0.9
1	AIB	D	16	6/7	0.97	0.07	33,36,37,38	0
1	AIB	E	16	6/7	0.97	0.11	33,36,36,36	0
1	AIB	H	4	6/7	0.97	0.16	73,74,75,77	0
1	DGL	H	20	9/10	0.97	0.07	31,33,47,48	0
1	DLE	A	21	8/9	0.97	0.09	30,31,32,32	0
1	DLE	C	21	8/9	0.97	0.09	28,31,33,33	0
1	AIB	E	11	6/7	0.97	0.08	35,37,39,40	0
1	DLE	E	21	8/9	0.97	0.07	34,35,36,36	0
1	AIB	B	17	6/7	0.97	0.06	30,32,33,34	0
1	AIB	C	17	6/7	0.97	0.07	31,33,34,34	0
1	DLY	H	13	9/10	0.97	0.09	34,38,57,62	0
1	AIB	E	17	6/7	0.97	0.08	31,34,34,35	0
1	AIB	F	17	6/7	0.97	0.07	30,32,35,35	0
1	DGL	A	14	9/10	0.97	0.07	32,37,44,52	0
1	AIB	H	22	6/7	0.97	0.07	33,33,34,34	0
1	AIB	C	23	6/7	0.97	0.09	27,27,28,29	0
1	AIB	D	23	6/7	0.97	0.10	30,32,33,34	0
1	AIB	H	17	6/7	0.97	0.12	29,30,31,33	0
1	AIB	H	23	6/7	0.97	0.10	29,31,32,33	0
1	AIB	F	10	6/7	0.97	0.09	42,44,45,46	0
1	AIB	E	4	6/7	0.97	0.17	55,65,67,67	0
1	DGL	D	14	9/10	0.97	0.08	33,35,44,50	0
1	DLE	G	12	8/9	0.97	0.08	35,36,41,42	0
1	DLE	E	9	8/9	0.98	0.10	41,42,44,46	0
1	DLE	B	21	8/9	0.98	0.15	30,30,32,32	0
1	DLE	A	24	8/9	0.98	0.13	30,32,35,36	0
1	DLE	C	15	8/9	0.98	0.09	31,34,41,42	0
1	DLE	C	24	8/9	0.98	0.08	30,32,37,37	0
1	AIB	F	16	6/7	0.98	0.08	34,35,37,37	0
1	DLE	E	24	8/9	0.98	0.08	35,38,39,42	0
1	AIB	C	5	6/7	0.98	0.05	47,50,54,54	0
1	DLE	G	24	8/9	0.98	0.09	31,33,36,37	0
1	DLE	F	21	8/9	0.98	0.12	30,33,35,35	0
1	AIB	E	28	6/7	0.98	0.08	40,44,47,50	0
1	DLY	A	25	9/10	0.98	0.12	32,35,46,53	0
1	AIB	C	11	6/7	0.98	0.14	35,40,41,44	0
1	AIB	A	17	6/7	0.98	0.07	31,34,35,35	0
1	BF7	A	29	12/13	0.98	0.07	30,33,38,41	1
1	AIB	B	22	6/7	0.98	0.09	30,32,32,32	0
1	DLE	H	3	8/9	0.98	0.13	73,92,95,96	0
1	DGL	C	20	9/10	0.98	0.11	31,33,41,45	0
1	AIB	E	22	6/7	0.98	0.10	37,40,40,41	0

*Continued on next page...*

Continued from previous page...

Mol	Type	Chain	Res	Atoms	RSCC	RSR	B-factors( $\text{\AA}^2$ )	Q<0.9
1	DLE	G	15	8/9	0.98	0.06	31,33,33,34	0
1	DLY	D	13	9/10	0.98	0.09	35,39,60,65	0
1	AIB	B	26	6/7	0.98	0.09	31,33,34,36	0
1	AIB	A	16	6/7	0.98	0.09	35,37,38,40	0
1	AIB	A	23	6/7	0.98	0.11	29,32,32,35	0
1	AIB	B	23	6/7	0.98	0.10	31,33,34,35	0
1	AIB	B	16	6/7	0.98	0.06	32,34,34,35	0
1	AIB	G	26	6/7	0.98	0.12	32,33,35,36	0
1	DLE	A	9	8/9	0.98	0.10	37,41,42,44	0
1	AIB	A	27	6/7	0.98	0.09	35,37,38,40	0
1	AIB	F	23	6/7	0.98	0.06	29,33,35,35	0
1	AIB	E	23	6/7	0.99	0.06	37,39,40,41	0
1	AIB	A	22	6/7	0.99	0.06	30,30,31,33	0

### 6.3 Carbohydrates [i](#)

There are no monosaccharides in this entry.

### 6.4 Ligands [i](#)

In the following table, the Atoms column lists the number of modelled atoms in the group and the number defined in the chemical component dictionary. The B-factors column lists the minimum, median, 95<sup>th</sup> percentile and maximum values of B factors of atoms in the group. The column labelled 'Q< 0.9' lists the number of atoms with occupancy less than 0.9.

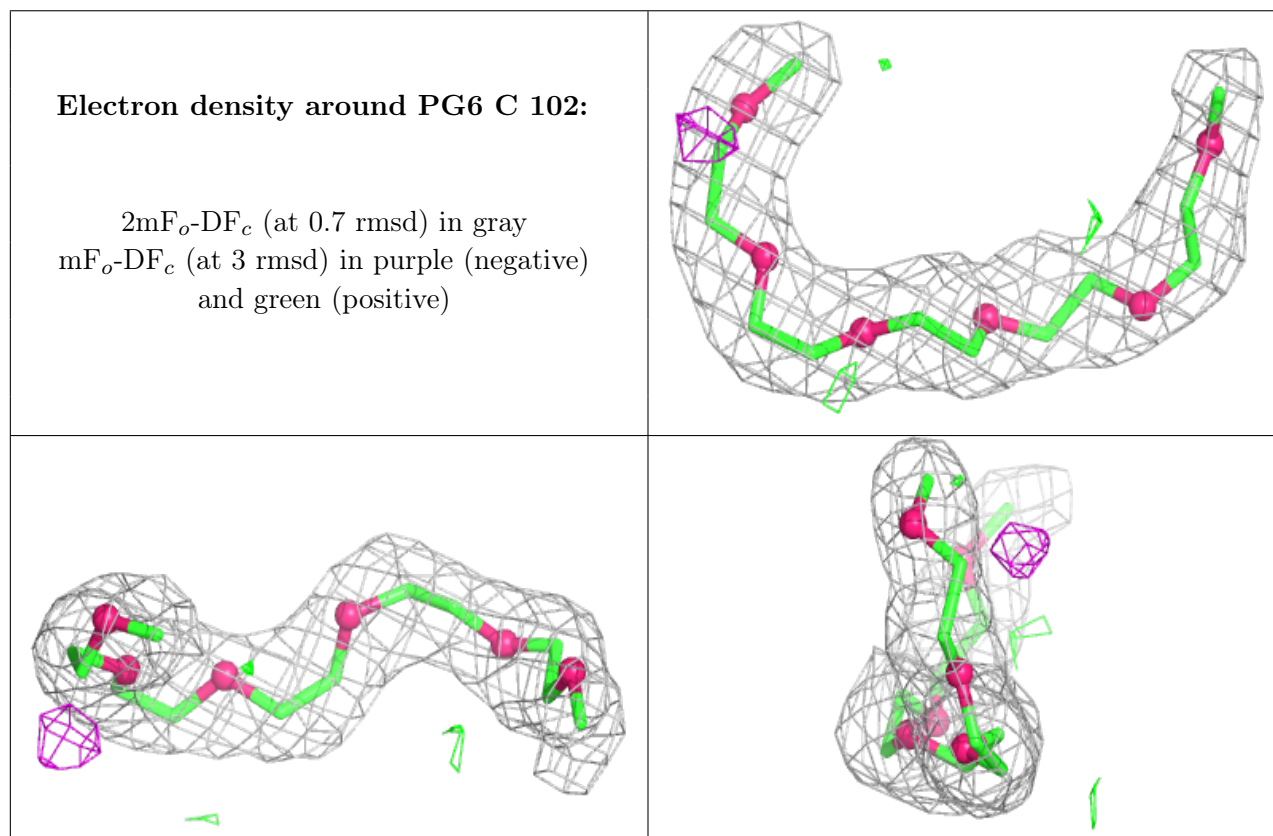
Mol	Type	Chain	Res	Atoms	RSCC	RSR	B-factors( $\text{\AA}^2$ )	Q<0.9
3	EDO	B	104	4/4	0.46	0.19	80,85,85,86	0
8	BO3	E	108	4/4	0.48	0.25	52,59,59,66	0
3	EDO	G	102	4/4	0.53	0.37	90,95,99,103	0
3	EDO	E	107	4/4	0.61	0.18	97,99,100,102	0
6	PG0	B	101	8/8	0.68	0.16	69,77,90,94	0
5	PEG	E	106	7/7	0.72	0.20	66,76,84,85	0
5	PEG	F	101	7/7	0.73	0.19	64,71,77,79	0
5	PEG	E	103	7/7	0.74	0.23	64,65,72,75	0
5	PEG	B	103	7/7	0.75	0.24	82,96,102,102	0
3	EDO	C	105	4/4	0.76	0.24	82,89,93,97	0
3	EDO	E	101	4/4	0.76	0.20	81,82,85,88	0
5	PEG	A	106	7/7	0.77	0.16	57,65,72,73	0
3	EDO	A	107	4/4	0.79	0.29	75,75,77,78	0
3	EDO	B	102	4/4	0.80	0.29	101,110,116,117	0
3	EDO	D	102	4/4	0.81	0.19	69,76,76,78	0

Continued on next page...

Continued from previous page...

Mol	Type	Chain	Res	Atoms	RSCC	RSR	B-factors( $\text{\AA}^2$ )	Q<0.9
3	EDO	E	109	4/4	0.81	0.13	73,77,78,79	0
5	PEG	A	105	7/7	0.83	0.17	67,68,76,80	0
3	EDO	E	104	4/4	0.84	0.18	80,81,86,87	0
3	EDO	A	103	4/4	0.84	0.25	77,78,79,79	0
2	PGE	A	102	10/10	0.88	0.20	58,76,86,87	0
8	BO3	C	104	4/4	0.89	0.22	45,56,56,73	0
3	EDO	D	101	4/4	0.89	0.30	61,64,66,69	0
3	EDO	C	101	4/4	0.91	0.14	69,70,72,73	0
3	EDO	D	103	4/4	0.91	0.45	61,73,73,73	0
5	PEG	G	101	7/7	0.92	0.23	76,91,99,99	0
2	PGE	A	101	10/10	0.93	0.12	51,53,63,71	0
5	PEG	E	105	7/7	0.93	0.17	67,72,74,76	0
9	PG4	E	102	13/13	0.93	0.13	48,54,72,73	0
7	PG6	C	102	18/18	0.94	0.14	39,43,84,88	0
4	SO4	A	104	5/5	0.96	0.17	67,78,83,88	0
4	SO4	D	104	5/5	0.97	0.10	56,58,63,75	0
4	SO4	C	103	5/5	0.98	0.07	54,59,61,65	0

The following is a graphical depiction of the model fit to experimental electron density of all instances of the Ligand of Interest. In addition, ligands with molecular weight > 250 and outliers as shown on the geometry validation Tables will also be included. Each fit is shown from different orientation to approximate a three-dimensional view.



## 6.5 Other polymers [i](#)

There are no such residues in this entry.