



Full wwPDB X-ray Structure Validation Report ⓘ

Jan 29, 2019 – 02:06 AM EST

PDB ID : 5QED
Title : PanDDA analysis group deposition – Crystal structure of PTP1B in complex with compound_FMOPL000538a
Authors : Keedy, D.A.; Hill, Z.B.; Biel, J.T.; Kang, E.; Rettenmaier, T.J.; Brandao-Neto, J.; von Delft, F.; Wells, J.A.; Fraser, J.S.
Deposited on : 2018-08-30
Resolution : 1.75 Å(reported)

This is a Full wwPDB X-ray Structure Validation Report for a publicly released PDB entry.

We welcome your comments at validation@mail.wwpdb.org

A user guide is available at

<https://www.wwpdb.org/validation/2017/XrayValidationReportHelp>

with specific help available everywhere you see the ⓘ symbol.

The following versions of software and data (see [references ⓘ](#)) were used in the production of this report:

MolProbity : 4.02b-467
Mogul : 1.7.3 (157068), CSD as539be (2018)
Xtrriage (Phenix) : 1.13
EDS : rb-20031633
Percentile statistics : 20171227.v01 (using entries in the PDB archive December 27th 2017)
Refmac : 5.8.0158
CCP4 : 7.0 (Gargrove)
Ideal geometry (proteins) : Engh & Huber (2001)
Ideal geometry (DNA, RNA) : Parkinson et al. (1996)
Validation Pipeline (wwPDB-VP) : rb-20031633

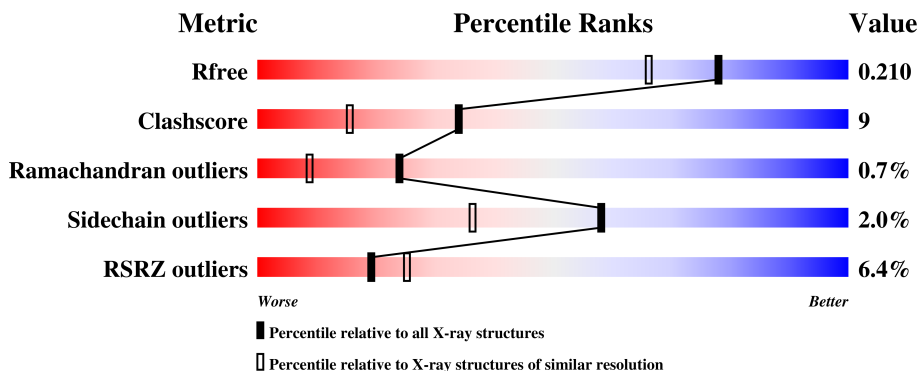
1 Overall quality at a glance i

The following experimental techniques were used to determine the structure:

X-RAY DIFFRACTION

The reported resolution of this entry is 1.75 Å.

Percentile scores (ranging between 0-100) for global validation metrics of the entry are shown in the following graphic. The table shows the number of entries on which the scores are based.



Metric	Whole archive (#Entries)	Similar resolution (#Entries, resolution range(Å))
R_{free}	111664	1952 (1.76-1.76)
Clashscore	122126	2072 (1.76-1.76)
Ramachandran outliers	120053	2050 (1.76-1.76)
Sidechain outliers	120020	2050 (1.76-1.76)
RSRZ outliers	108989	1913 (1.76-1.76)

The table below summarises the geometric issues observed across the polymeric chains and their fit to the electron density. The red, orange, yellow and green segments on the lower bar indicate the fraction of residues that contain outliers for ≥ 3 , 2, 1 and 0 types of geometric quality criteria. A grey segment represents the fraction of residues that are not modelled. The numeric value for each fraction is indicated below the corresponding segment, with a dot representing fractions $\leq 5\%$. The upper red bar (where present) indicates the fraction of residues that have poor fit to the electron density. The numeric value is given above the bar.

Mol	Chain	Length	Quality of chain
1	A	321	

The following table lists non-polymeric compounds, carbohydrate monomers and non-standard residues in protein, DNA, RNA chains that are outliers for geometric or electron-density-fit criteria:

Mol	Type	Chain	Res	Chirality	Geometry	Clashes	Electron density
2	7MU	A	401[C]	-	-	-	X

Continued on next page...

Continued from previous page...

Mol	Type	Chain	Res	Chirality	Geometry	Clashes	Electron density
2	7MU	A	401[D]	-	-	-	X
2	7MU	A	402[C]	-	-	-	X
2	7MU	A	402[D]	-	-	-	X
2	7MU	A	403[C]	-	-	-	X
2	7MU	A	403[D]	-	-	-	X
3	TRS	A	404	-	-	X	-

2 Entry composition [i](#)

There are 4 unique types of molecules in this entry. The entry contains 14431 atoms, of which 7046 are hydrogens and 0 are deuteriums.

In the tables below, the ZeroOcc column contains the number of atoms modelled with zero occupancy, the AltConf column contains the number of residues with at least one atom in alternate conformation and the Trace column contains the number of residues modelled with at most 2 atoms.

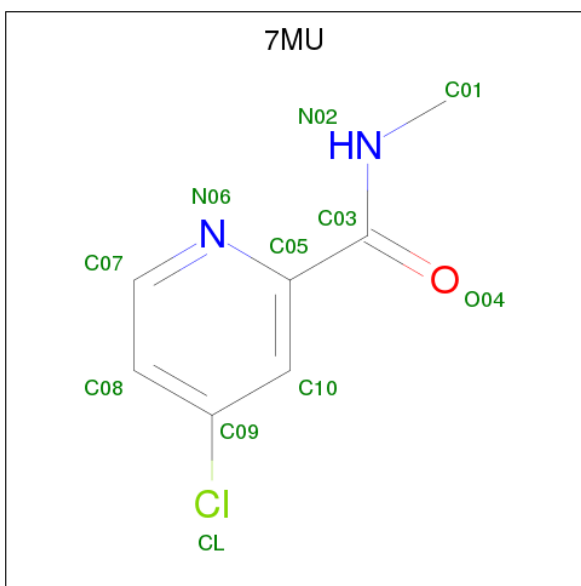
- Molecule 1 is a protein called Tyrosine-protein phosphatase non-receptor type 1.

Mol	Chain	Residues	Atoms					ZeroOcc	AltConf	Trace	
			Total	C	H	N	O				S
1	A	282	14031	4462	6992	1198	1334	45	0	192	0

There are 2 discrepancies between the modelled and reference sequences:

Chain	Residue	Modelled	Actual	Comment	Reference
A	32	SER	CYS	engineered mutation	UNP P18031
A	92	VAL	CYS	engineered mutation	UNP P18031

- Molecule 2 is 4-chloranyl- {N}-methyl-pyridine-2-carboxamide (three-letter code: 7MU) (formula: C₇H₇ClN₂O).



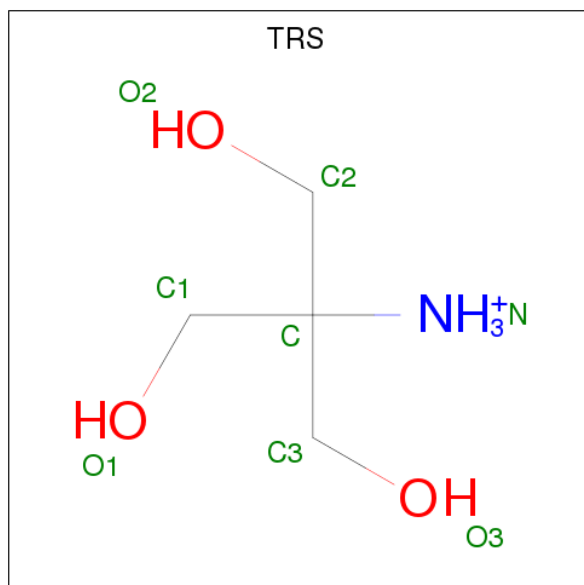
Mol	Chain	Residues	Atoms					ZeroOcc	AltConf	
			Total	C	Cl	H	N			O
2	A	1	36	14	2	14	4	2	0	1
2	A	1	36	14	2	14	4	2	0	1

Continued on next page...

Continued from previous page...

Mol	Chain	Residues	Atoms					ZeroOcc	AltConf	
			Total	C	Cl	H	N			O
2	A	1	36	14	2	14	4	2	0	1

- Molecule 3 is 2-AMINO-2-HYDROXYMETHYL-PROPANE-1,3-DIOL (three-letter code: TRS) (formula: C₄H₁₂NO₃).



Mol	Chain	Residues	Atoms					ZeroOcc	AltConf
			Total	C	H	N	O		
3	A	1	20	4	12	1	3	0	0

- Molecule 4 is water.

Mol	Chain	Residues	Atoms	ZeroOcc	AltConf
4	A	272	Total O 272 272	0	0

4 Data and refinement statistics i

Property	Value	Source
Space group	P 31 2 1	Depositor
Cell constants a, b, c, α , β , γ	89.78Å 89.78Å 106.49Å 90.00° 90.00° 120.00°	Depositor
Resolution (Å)	44.89 – 1.75 44.89 – 1.76	Depositor EDS
% Data completeness (in resolution range)	100.0 (44.89-1.75) 99.9 (44.89-1.76)	Depositor EDS
R_{merge}	0.08	Depositor
R_{sym}	(Not available)	Depositor
$\langle I/\sigma(I) \rangle$ ¹	1.21 (at 1.75Å)	Xtrriage
Refinement program	PHENIX 1.10.1_2155	Depositor
R, R_{free}	0.183 , 0.207 0.184 , 0.210	Depositor DCC
R_{free} test set	1969 reflections (3.93%)	wwPDB-VP
Wilson B-factor (Å ²)	28.6	Xtrriage
Anisotropy	0.241	Xtrriage
Bulk solvent k_{sol} (e/Å ³), B_{sol} (Å ²)	0.34 , 48.7	EDS
L-test for twinning ²	$\langle L \rangle = 0.50$, $\langle L^2 \rangle = 0.33$	Xtrriage
Estimated twinning fraction	0.024 for -h,-k,l	Xtrriage
F_o, F_c correlation	0.97	EDS
Total number of atoms	14431	wwPDB-VP
Average B, all atoms (Å ²)	40.0	wwPDB-VP

Xtrriage's analysis on translational NCS is as follows: *The largest off-origin peak in the Patterson function is 4.39% of the height of the origin peak. No significant pseudotranslation is detected.*

¹Intensities estimated from amplitudes.

²Theoretical values of $\langle |L| \rangle$, $\langle L^2 \rangle$ for acentric reflections are 0.5, 0.333 respectively for untwinned datasets, and 0.375, 0.2 for perfectly twinned datasets.

5 Model quality [i](#)

5.1 Standard geometry [i](#)

Bond lengths and bond angles in the following residue types are not validated in this section: TRS, 7MU

The Z score for a bond length (or angle) is the number of standard deviations the observed value is removed from the expected value. A bond length (or angle) with $|Z| > 5$ is considered an outlier worth inspection. RMSZ is the root-mean-square of all Z scores of the bond lengths (or angles).

Mol	Chain	Bond lengths		Bond angles	
		RMSZ	# Z >5	RMSZ	# Z >5
1	A	0.51	4/7190 (0.1%)	0.63	0/9659

All (4) bond length outliers are listed below:

Mol	Chain	Res	Type	Atoms	Z	Observed(Å)	Ideal(Å)
1	A	155[A]	VAL	CB-CG2	-5.63	1.41	1.52
1	A	155[B]	VAL	CB-CG2	-5.63	1.41	1.52
1	A	155[C]	VAL	CB-CG2	-5.63	1.41	1.52
1	A	155[D]	VAL	CB-CG2	-5.63	1.41	1.52

There are no bond angle outliers.

There are no chirality outliers.

There are no planarity outliers.

5.2 Too-close contacts [i](#)

In the following table, the Non-H and H(model) columns list the number of non-hydrogen atoms and hydrogen atoms in the chain respectively. The H(added) column lists the number of hydrogen atoms added and optimized by MolProbity. The Clashes column lists the number of clashes within the asymmetric unit, whereas Symm-Clashes lists symmetry related clashes.

Mol	Chain	Non-H	H(model)	H(added)	Clashes	Symm-Clashes
1	A	7039	6992	6911	130	10
2	A	66	42	0	4	2
3	A	8	12	11	0	10
4	A	272	0	0	31	3
All	All	7385	7046	6922	130	13

The all-atom clashscore is defined as the number of clashes found per 1000 atoms (including

hydrogen atoms). The all-atom clashscore for this structure is 9.

All (130) close contacts within the same asymmetric unit are listed below, sorted by their clash magnitude.

Atom-1	Atom-2	Interatomic distance (Å)	Clash overlap (Å)
1:A:36[C]:LYS:NZ	4:A:504:HOH:O	1.84	1.08
1:A:36[D]:LYS:NZ	4:A:504:HOH:O	1.84	1.08
1:A:282[A]:MET:O	4:A:503:HOH:O	1.78	1.01
1:A:282[B]:MET:O	4:A:503:HOH:O	1.78	1.01
1:A:24[A]:ARG:NH1	4:A:508:HOH:O	2.03	0.90
1:A:24[B]:ARG:NH1	4:A:508:HOH:O	2.03	0.90
1:A:9[D]:GLN:HA	1:A:12[D]:LYS:HE3	1.53	0.89
1:A:9[C]:GLN:HA	1:A:12[C]:LYS:HE3	1.53	0.89
1:A:9[D]:GLN:HA	1:A:12[D]:LYS:HG2	1.63	0.81
1:A:9[C]:GLN:HA	1:A:12[C]:LYS:HG2	1.63	0.81
1:A:29[C]:ASP:OD1	4:A:505:HOH:O	1.93	0.80
1:A:29[D]:ASP:OD1	4:A:505:HOH:O	1.93	0.80
1:A:200[A]:GLU:OE2	4:A:507:HOH:O	2.01	0.78
1:A:200[B]:GLU:OE2	4:A:507:HOH:O	2.01	0.78
1:A:200[C]:GLU:OE1	4:A:506:HOH:O	2.00	0.75
1:A:200[D]:GLU:OE1	4:A:506:HOH:O	2.00	0.75
1:A:4[C]:GLU:O	1:A:8[C]:GLU:HG3	1.87	0.73
1:A:4[D]:GLU:O	1:A:8[D]:GLU:HG3	1.87	0.73
1:A:281[C]:ILE:HD12	1:A:281[C]:ILE:O	1.92	0.69
1:A:281[D]:ILE:HD12	1:A:281[D]:ILE:O	1.92	0.69
1:A:161[C]:GLU:OE2	4:A:509:HOH:O	2.05	0.68
1:A:161[D]:GLU:OE2	4:A:509:HOH:O	2.05	0.68
1:A:153[B]:TYR:HE1	1:A:155[B]:VAL:CG2	2.08	0.67
1:A:165[C]:THR:OG1	1:A:167[C]:GLU:HG3	1.95	0.67
1:A:165[D]:THR:OG1	1:A:167[D]:GLU:HG3	1.95	0.67
1:A:236[A]:ASP:OD2	4:A:512:HOH:O	2.14	0.66
1:A:236[B]:ASP:OD2	4:A:512:HOH:O	2.14	0.66
1:A:248[C]:LYS:HD3	4:A:754:HOH:O	1.96	0.66
1:A:248[D]:LYS:HD3	4:A:754:HOH:O	1.96	0.66
1:A:2[A]:GLU:HG2	1:A:3[A]:MET:N	2.11	0.66
1:A:2[B]:GLU:HG2	1:A:3[B]:MET:N	2.11	0.66
1:A:153[C]:TYR:OH	1:A:197[C]:LYS:HE3	1.96	0.65
1:A:63[A]:ASP:OD2	4:A:510:HOH:O	2.07	0.65
1:A:63[B]:ASP:OD2	4:A:510:HOH:O	2.07	0.65
1:A:38[C]:PRO:O	1:A:41[C]:LYS:HG3	1.98	0.64
1:A:38[D]:PRO:O	1:A:41[D]:LYS:HG3	1.98	0.64
1:A:83[B]:LEU:HD11	1:A:226[B]:CYS:SG	2.41	0.61
1:A:32[C]:SER:HB3	1:A:51:PRO:O	2.00	0.61

Continued on next page...

Continued from previous page...

Atom-1	Atom-2	Interatomic distance (Å)	Clash overlap (Å)
1:A:32[D]:SER:HB3	1:A:51:PRO:O	2.00	0.61
1:A:2[A]:GLU:HG2	1:A:3[A]:MET:H	1.65	0.60
1:A:2[B]:GLU:HG2	1:A:3[B]:MET:H	1.65	0.60
1:A:9[C]:GLN:CA	1:A:12[C]:LYS:HE3	2.30	0.60
1:A:9[D]:GLN:CA	1:A:12[D]:LYS:HE3	2.30	0.60
1:A:88[C]:LEU:HB3	1:A:89[C]:PRO:HD2	1.84	0.59
1:A:88[D]:LEU:HB3	1:A:89[D]:PRO:HD2	1.84	0.59
1:A:21[C]:GLN:HE22	1:A:24[C]:ARG:NH2	2.00	0.58
1:A:21[D]:GLN:HE22	1:A:24[D]:ARG:NH2	2.00	0.58
1:A:22[C]:ASP:OD1	4:A:511:HOH:O	2.12	0.57
1:A:22[D]:ASP:OD1	4:A:511:HOH:O	2.12	0.57
1:A:1[D]:MET:HG2	1:A:6[D]:GLU:HB2	1.86	0.57
1:A:1[C]:MET:HG2	1:A:6[C]:GLU:HB2	1.86	0.57
1:A:153[B]:TYR:HE1	1:A:155[B]:VAL:HG23	1.70	0.56
1:A:252[C]:GLU:HA	1:A:252[C]:GLU:OE1	2.05	0.56
1:A:252[D]:GLU:OE1	1:A:252[D]:GLU:HA	2.05	0.56
1:A:237[C]:LYS:HD3	2:A:403[C]:7MU:C01	2.36	0.56
1:A:237[D]:LYS:HD3	2:A:403[D]:7MU:C01	2.36	0.56
1:A:153[B]:TYR:CE1	1:A:155[B]:VAL:HG23	2.43	0.54
1:A:253[C]:MET:HE3	1:A:260[C]:LEU:HD13	1.91	0.52
1:A:253[D]:MET:HE3	1:A:260[D]:LEU:HD13	1.91	0.52
1:A:9[C]:GLN:CA	1:A:12[C]:LYS:HG2	2.38	0.52
1:A:9[D]:GLN:CA	1:A:12[D]:LYS:HG2	2.38	0.52
1:A:3[A]:MET:HE1	1:A:274[A]:VAL:HG12	1.92	0.51
1:A:3[B]:MET:HE1	1:A:274[B]:VAL:HG12	1.92	0.51
1:A:278[C]:ALA:O	1:A:282[C]:MET:HG2	2.11	0.50
1:A:278[D]:ALA:O	1:A:282[D]:MET:HG2	2.11	0.50
1:A:22[A]:ASP:OD1	4:A:511:HOH:O	2.18	0.49
1:A:92[A]:VAL:HG12	1:A:135[A]:PHE:CE1	2.47	0.49
1:A:92[B]:VAL:HG12	1:A:135[B]:PHE:CE1	2.47	0.49
1:A:281[C]:ILE:C	1:A:281[C]:ILE:HD12	2.33	0.49
1:A:281[D]:ILE:HD12	1:A:281[D]:ILE:C	2.33	0.49
1:A:277[C]:GLY:O	1:A:281[C]:ILE:HG23	2.12	0.48
1:A:277[D]:GLY:O	1:A:281[D]:ILE:HG23	2.12	0.48
1:A:147[C]:GLU:HG3	1:A:156:ARG:HG2	1.95	0.48
1:A:147[D]:GLU:HG3	1:A:156:ARG:HG2	1.95	0.48
1:A:21[D]:GLN:HE22	1:A:24[D]:ARG:CZ	2.26	0.48
1:A:6[A]:GLU:OE2	1:A:247[A]:LYS:HE3	2.14	0.48
1:A:6[B]:GLU:OE2	1:A:247[B]:LYS:HE3	2.14	0.48
1:A:21[C]:GLN:HE22	1:A:24[C]:ARG:CZ	2.26	0.48
1:A:130[D]:GLU:HG2	1:A:131[D]:LYS:HG2	1.96	0.46

Continued on next page...

Continued from previous page...

Atom-1	Atom-2	Interatomic distance (Å)	Clash overlap (Å)
1:A:130[C]:GLU:HG2	1:A:131[C]:LYS:HG2	1.96	0.46
1:A:35:ALA:CB	1:A:50[D]:SER:HB3	2.45	0.46
1:A:148[C]:ASP:HB3	1:A:155[C]:VAL:HG23	1.98	0.46
1:A:148[D]:ASP:HB3	1:A:155[D]:VAL:HG23	1.98	0.46
1:A:79[C]:ARG:HG3	1:A:233[C]:LEU:CD1	2.46	0.46
1:A:79[D]:ARG:HG3	1:A:233[D]:LEU:CD1	2.46	0.46
1:A:280[C]:PHE:CD2	1:A:280[C]:PHE:C	2.89	0.46
1:A:280[D]:PHE:CD2	1:A:280[D]:PHE:C	2.89	0.46
1:A:35:ALA:CB	1:A:50[C]:SER:HB3	2.45	0.45
1:A:21[C]:GLN:NE2	1:A:24[C]:ARG:NE	2.64	0.45
1:A:21[D]:GLN:NE2	1:A:24[D]:ARG:NE	2.64	0.45
1:A:153[D]:TYR:HE1	1:A:155[D]:VAL:HG22	1.81	0.44
1:A:120[C]:LYS:HA	1:A:120[C]:LYS:HD2	1.64	0.43
1:A:120[D]:LYS:HD2	1:A:120[D]:LYS:HA	1.64	0.43
1:A:145[C]:ILE:HD11	1:A:159[C]:GLU:HB2	2.00	0.43
1:A:145[D]:ILE:HD11	1:A:159[D]:GLU:HB2	2.00	0.43
1:A:47[D]:ARG:HH11	1:A:48[D]:ASP:HB3	1.83	0.43
1:A:47[C]:ARG:HH11	1:A:48[C]:ASP:HB3	1.83	0.43
1:A:57[D]:ILE:HD11	1:A:71:LEU:HB2	2.00	0.43
1:A:241[A]:PRO:HG3	4:A:588:HOH:O	2.18	0.43
1:A:241[B]:PRO:HG3	4:A:588:HOH:O	2.18	0.43
1:A:153[D]:TYR:HB2	1:A:175[D]:HIS:O	2.19	0.43
1:A:21[C]:GLN:NE2	1:A:24[C]:ARG:HE	2.16	0.43
1:A:21[D]:GLN:NE2	1:A:24[D]:ARG:HE	2.16	0.43
1:A:200[A]:GLU:CG	4:A:507:HOH:O	2.66	0.43
1:A:200[B]:GLU:CG	4:A:507:HOH:O	2.66	0.43
1:A:15[A]:SER:HA	4:A:704:HOH:O	2.18	0.42
1:A:15[B]:SER:HA	4:A:704:HOH:O	2.18	0.42
1:A:153[A]:TYR:OH	1:A:197[A]:LYS:HG3	2.19	0.42
1:A:61[C]:GLN:NE2	4:A:524:HOH:O	2.52	0.42
1:A:61[D]:GLN:NE2	4:A:524:HOH:O	2.52	0.42
1:A:88[C]:LEU:HB3	1:A:89[C]:PRO:CD	2.48	0.42
1:A:88[D]:LEU:HB3	1:A:89[D]:PRO:CD	2.48	0.42
1:A:193[C]:ASN:O	1:A:197[C]:LYS:HG2	2.20	0.42
1:A:253[C]:MET:CE	1:A:260[C]:LEU:HD13	2.48	0.42
1:A:253[D]:MET:CE	1:A:260[D]:LEU:HD13	2.48	0.42
1:A:57[C]:ILE:HD11	1:A:71:LEU:HB2	2.00	0.42
1:A:153[C]:TYR:HB2	1:A:175[C]:HIS:O	2.20	0.41
1:A:2[C]:GLU:O	1:A:5[C]:LYS:N	2.43	0.41
1:A:2[D]:GLU:O	1:A:5[D]:LYS:N	2.43	0.41
1:A:280[C]:PHE:CE2	2:A:401[C]:7MU:C05	3.02	0.41

Continued on next page...

Continued from previous page...

Atom-1	Atom-2	Interatomic distance (Å)	Clash overlap (Å)
1:A:280[D]:PHE:CE2	2:A:401[D]:7MU:C05	3.02	0.41
1:A:152[C]:TYR:HA	1:A:178[C]:THR:HG21	2.02	0.41
1:A:45[A]:ARG:NH2	1:A:121[A]:CYS:HA	2.36	0.41
1:A:45[B]:ARG:NH2	1:A:121[B]:CYS:HA	2.36	0.41
1:A:2[A]:GLU:CG	1:A:3[A]:MET:N	2.82	0.40
1:A:2[B]:GLU:CG	1:A:3[B]:MET:N	2.82	0.40
1:A:50[C]:SER:HB3	1:A:51:PRO:HD2	2.02	0.40
1:A:50[D]:SER:HB3	1:A:51:PRO:HD2	2.02	0.40
1:A:20:TYR:CE2	1:A:24[C]:ARG:HD3	2.56	0.40
1:A:20:TYR:CE2	1:A:24[D]:ARG:HD3	2.56	0.40

All (13) symmetry-related close contacts are listed below. The label for Atom-2 includes the symmetry operator and encoded unit-cell translations to be applied.

Atom-1	Atom-2	Interatomic distance (Å)	Clash overlap (Å)
1:A:128[C]:LYS:NZ	3:A:404:TRS:HO2[5_544]	0.96	0.64
1:A:128[D]:LYS:NZ	3:A:404:TRS:HO2[5_544]	0.96	0.64
1:A:128[C]:LYS:HZ1	3:A:404:TRS:HO2[5_544]	0.98	0.62
1:A:128[D]:LYS:HZ1	3:A:404:TRS:HO2[5_544]	0.98	0.62
1:A:128[C]:LYS:HZ2	3:A:404:TRS:HO2[5_544]	1.02	0.58
1:A:128[D]:LYS:HZ2	3:A:404:TRS:HO2[5_544]	1.02	0.58
1:A:128[C]:LYS:NZ	3:A:404:TRS:O2[5_544]	1.86	0.34
1:A:128[D]:LYS:NZ	3:A:404:TRS:O2[5_544]	1.86	0.34
1:A:128[C]:LYS:HZ3	3:A:404:TRS:HO2[5_544]	1.30	0.30
1:A:128[D]:LYS:HZ3	3:A:404:TRS:HO2[5_544]	1.30	0.30
2:A:403[C]:7MU:CL	4:A:760:HOH:O[3_654]	1.91	0.29
2:A:403[D]:7MU:CL	4:A:760:HOH:O[3_654]	1.91	0.29
4:A:714:HOH:O	4:A:765:HOH:O[2_545]	2.19	0.01

5.3 Torsion angles

5.3.1 Protein backbone

In the following table, the Percentiles column shows the percent Ramachandran outliers of the chain as a percentile score with respect to all X-ray entries followed by that with respect to entries of similar resolution.

The Analysed column shows the number of residues for which the backbone conformation was analysed, and the total number of residues.

Mol	Chain	Analysed	Favoured	Allowed	Outliers	Percentiles
1	A	850/321 (265%)	828 (97%)	14 (2%)	8 (1%)	19 5

All (8) Ramachandran outliers are listed below:

Mol	Chain	Res	Type
1	A	3[A]	MET
1	A	3[B]	MET
1	A	3[C]	MET
1	A	3[D]	MET
1	A	261[A]	ILE
1	A	261[B]	ILE
1	A	261[C]	ILE
1	A	261[D]	ILE

5.3.2 Protein sidechains [i](#)

In the following table, the Percentiles column shows the percent sidechain outliers of the chain as a percentile score with respect to all X-ray entries followed by that with respect to entries of similar resolution.

The Analysed column shows the number of residues for which the sidechain conformation was analysed, and the total number of residues.

Mol	Chain	Analysed	Rotameric	Outliers	Percentiles
1	A	790/294 (269%)	770 (98%)	20 (2%)	50 27

All (20) residues with a non-rotameric sidechain are listed below:

Mol	Chain	Res	Type
1	A	61[A]	GLN
1	A	61[B]	GLN
1	A	61[C]	GLN
1	A	61[D]	GLN
1	A	72[A]	ILE
1	A	72[B]	ILE
1	A	72[C]	ILE
1	A	72[D]	ILE
1	A	79[A]	ARG
1	A	79[B]	ARG
1	A	79[C]	ARG
1	A	79[D]	ARG
1	A	265[A]	ASP

Continued on next page...

Continued from previous page...

Mol	Chain	Res	Type
1	A	265[B]	ASP
1	A	265[C]	ASP
1	A	265[D]	ASP
1	A	281[A]	ILE
1	A	281[B]	ILE
1	A	281[C]	ILE
1	A	281[D]	ILE

Some sidechains can be flipped to improve hydrogen bonding and reduce clashes. There are no such sidechains identified.

5.3.3 RNA [i](#)

There are no RNA molecules in this entry.

5.4 Non-standard residues in protein, DNA, RNA chains [i](#)

There are no non-standard protein/DNA/RNA residues in this entry.

5.5 Carbohydrates [i](#)

There are no carbohydrates in this entry.

5.6 Ligand geometry [i](#)

7 ligands are modelled in this entry.

In the following table, the Counts columns list the number of bonds (or angles) for which Mogul statistics could be retrieved, the number of bonds (or angles) that are observed in the model and the number of bonds (or angles) that are defined in the Chemical Component Dictionary. The Link column lists molecule types, if any, to which the group is linked. The Z score for a bond length (or angle) is the number of standard deviations the observed value is removed from the expected value. A bond length (or angle) with $|Z| > 2$ is considered an outlier worth inspection. RMSZ is the root-mean-square of all Z scores of the bond lengths (or angles).

Mol	Type	Chain	Res	Link	Bond lengths			Bond angles		
					Counts	RMSZ	# Z > 2	Counts	RMSZ	# Z > 2
2	7MU	A	401[C]	-	11,11,11	3.38	4 (36%)	13,14,14	1.72	3 (23%)
2	7MU	A	401[D]	-	11,11,11	3.38	4 (36%)	13,14,14	1.72	3 (23%)
2	7MU	A	402[C]	-	11,11,11	2.87	5 (45%)	13,14,14	1.51	3 (23%)

Mol	Type	Chain	Res	Link	Bond lengths			Bond angles		
					Counts	RMSZ	# Z > 2	Counts	RMSZ	# Z > 2
2	7MU	A	402[D]	-	11,11,11	2.87	5 (45%)	13,14,14	1.51	3 (23%)
2	7MU	A	403[C]	-	11,11,11	2.44	5 (45%)	13,14,14	2.58	7 (53%)
2	7MU	A	403[D]	-	11,11,11	2.44	5 (45%)	13,14,14	2.58	7 (53%)
3	TRS	A	404	-	7,7,7	1.26	0	9,9,9	1.43	2 (22%)

In the following table, the Chirals column lists the number of chiral outliers, the number of chiral centers analysed, the number of these observed in the model and the number defined in the Chemical Component Dictionary. Similar counts are reported in the Torsion and Rings columns. '-' means no outliers of that kind were identified.

Mol	Type	Chain	Res	Link	Chirals	Torsions	Rings
2	7MU	A	401[C]	-	-	0/6/6/6	0/1/1/1
2	7MU	A	401[D]	-	-	0/6/6/6	0/1/1/1
2	7MU	A	402[C]	-	-	0/6/6/6	0/1/1/1
2	7MU	A	402[D]	-	-	0/6/6/6	0/1/1/1
2	7MU	A	403[C]	-	-	0/6/6/6	0/1/1/1
2	7MU	A	403[D]	-	-	0/6/6/6	0/1/1/1
3	TRS	A	404	-	-	0/9/9/9	0/0/0/0

All (28) bond length outliers are listed below:

Mol	Chain	Res	Type	Atoms	Z	Observed(Å)	Ideal(Å)
2	A	401[D]	7MU	C09-CL	-8.79	1.54	1.74
2	A	401[C]	7MU	C09-CL	-8.79	1.54	1.74
2	A	402[D]	7MU	C05-N06	-4.70	1.26	1.34
2	A	402[C]	7MU	C05-N06	-4.70	1.26	1.34
2	A	402[D]	7MU	C09-CL	-4.62	1.64	1.74
2	A	402[C]	7MU	C09-CL	-4.62	1.64	1.74
2	A	402[D]	7MU	C03-N02	-4.12	1.28	1.33
2	A	402[C]	7MU	C03-N02	-4.12	1.28	1.33
2	A	402[D]	7MU	C01-N02	-3.10	1.39	1.45
2	A	402[C]	7MU	C01-N02	-3.10	1.39	1.45
2	A	402[D]	7MU	C07-N06	-2.84	1.28	1.34
2	A	402[C]	7MU	C07-N06	-2.84	1.28	1.34
2	A	403[D]	7MU	C08-C09	-2.71	1.32	1.38
2	A	403[C]	7MU	C08-C09	-2.71	1.32	1.38
2	A	401[D]	7MU	C10-C05	-2.50	1.33	1.40
2	A	401[C]	7MU	C10-C05	-2.50	1.33	1.40
2	A	403[D]	7MU	C05-N06	-2.14	1.31	1.34
2	A	403[C]	7MU	C05-N06	-2.14	1.31	1.34
2	A	403[D]	7MU	C05-C03	2.82	1.57	1.50

Continued on next page...

Continued from previous page...

Mol	Chain	Res	Type	Atoms	Z	Observed(Å)	Ideal(Å)
2	A	403[C]	7MU	C05-C03	2.82	1.57	1.50
2	A	403[D]	7MU	C10-C09	2.96	1.43	1.38
2	A	403[C]	7MU	C10-C09	2.96	1.43	1.38
2	A	401[D]	7MU	C05-N06	3.07	1.39	1.34
2	A	401[C]	7MU	C05-N06	3.07	1.39	1.34
2	A	401[D]	7MU	C05-C03	5.15	1.63	1.50
2	A	401[C]	7MU	C05-C03	5.15	1.63	1.50
2	A	403[D]	7MU	C03-N02	5.67	1.39	1.33
2	A	403[C]	7MU	C03-N02	5.67	1.39	1.33

All (28) bond angle outliers are listed below:

Mol	Chain	Res	Type	Atoms	Z	Observed(°)	Ideal(°)
2	A	403[D]	7MU	C03-C05-N06	-4.39	112.34	117.56
2	A	403[C]	7MU	C03-C05-N06	-4.39	112.34	117.56
2	A	401[D]	7MU	O04-C03-N02	-3.48	117.05	122.50
2	A	401[C]	7MU	O04-C03-N02	-3.48	117.05	122.50
3	A	404	TRS	O3-C3-C	-3.21	103.75	111.13
2	A	403[D]	7MU	O04-C03-N02	-3.20	117.49	122.50
2	A	403[C]	7MU	O04-C03-N02	-3.20	117.49	122.50
2	A	403[D]	7MU	C08-C09-CL	-3.00	114.38	119.35
2	A	403[C]	7MU	C08-C09-CL	-3.00	114.38	119.35
2	A	401[D]	7MU	C10-C05-N06	-2.58	120.22	123.22
2	A	401[C]	7MU	C10-C05-N06	-2.58	120.22	123.22
2	A	403[D]	7MU	C10-C05-N06	-2.50	120.33	123.22
2	A	403[C]	7MU	C10-C05-N06	-2.50	120.33	123.22
2	A	402[D]	7MU	O04-C03-N02	-2.49	118.60	122.50
2	A	402[C]	7MU	O04-C03-N02	-2.49	118.60	122.50
3	A	404	TRS	O2-C2-C	-2.16	106.16	111.13
2	A	402[D]	7MU	C08-C09-C10	-2.10	118.71	121.52
2	A	402[C]	7MU	C08-C09-C10	-2.10	118.71	121.52
2	A	403[D]	7MU	C07-N06-C05	2.38	120.02	116.92
2	A	403[C]	7MU	C07-N06-C05	2.38	120.02	116.92
2	A	403[D]	7MU	C10-C05-C03	2.70	127.33	118.64
2	A	403[C]	7MU	C10-C05-C03	2.70	127.33	118.64
2	A	402[D]	7MU	C05-C10-C09	2.75	119.09	117.28
2	A	402[C]	7MU	C05-C10-C09	2.75	119.09	117.28
2	A	401[D]	7MU	C05-C10-C09	2.91	119.20	117.28
2	A	401[C]	7MU	C05-C10-C09	2.91	119.20	117.28
2	A	403[D]	7MU	C10-C09-CL	4.90	125.42	119.15
2	A	403[C]	7MU	C10-C09-CL	4.90	125.42	119.15

There are no chirality outliers.

There are no torsion outliers.

There are no ring outliers.

5 monomers are involved in 16 short contacts:

Mol	Chain	Res	Type	Clashes	Symm-Clashes
2	A	401[C]	7MU	1	0
2	A	401[D]	7MU	1	0
2	A	403[C]	7MU	1	1
2	A	403[D]	7MU	1	1
3	A	404	TRS	0	10

5.7 Other polymers [i](#)

There are no such residues in this entry.

5.8 Polymer linkage issues [i](#)

The following chains have linkage breaks:

Mol	Chain	Number of breaks
1	A	8

All chain breaks are listed below:

Model	Chain	Residue-1	Atom-1	Residue-2	Atom-2	Distance (Å)
1	A	146:SER	C	147[C]:GLU	N	1.19
1	A	146:SER	C	147[D]:GLU	N	1.19
1	A	227:LEU	C	228[C]:ALA	N	1.18
1	A	227:LEU	C	228[D]:ALA	N	1.18
1	A	151[D]:SER	C	152[D]:TYR	N	1.14
1	A	151[C]:SER	C	152[C]:TYR	N	1.14
1	A	157[C]:GLN	C	158:LEU	N	1.13
1	A	157[D]:GLN	C	158:LEU	N	1.13

6 Fit of model and data [i](#)

6.1 Protein, DNA and RNA chains [i](#)

In the following table, the column labelled ‘#RSRZ> 2’ contains the number (and percentage) of RSRZ outliers, followed by percent RSRZ outliers for the chain as percentile scores relative to all X-ray entries and entries of similar resolution. The OWAB column contains the minimum, median, 95th percentile and maximum values of the occupancy-weighted average B-factor per residue. The column labelled ‘Q< 0.9’ lists the number of (and percentage) of residues with an average occupancy less than 0.9.

Mol	Chain	Analysed	<RSRZ>	#RSRZ>2	OWAB(Å ²)	Q<0.9
1	A	282/321 (87%)	0.29	18 (6%) 19 25	20, 30, 60, 87	0

All (18) RSRZ outliers are listed below:

Mol	Chain	Res	Type	RSRZ
1	A	1[A]	MET	7.4
1	A	282[A]	MET	5.6
1	A	280[A]	PHE	4.7
1	A	12[A]	LYS	4.0
1	A	281[A]	ILE	4.0
1	A	63[A]	ASP	3.9
1	A	2[A]	GLU	3.7
1	A	5[A]	LYS	3.2
1	A	165[A]	THR	3.2
1	A	62[A]	GLU	3.0
1	A	10[A]	ILE	2.8
1	A	9[A]	GLN	2.6
1	A	25[A]	HIS	2.4
1	A	47[A]	ARG	2.4
1	A	18[A]	ALA	2.3
1	A	114	MET	2.3
1	A	182[A]	PHE	2.2
1	A	152[A]	TYR	2.0

6.2 Non-standard residues in protein, DNA, RNA chains [i](#)

There are no non-standard protein/DNA/RNA residues in this entry.

6.3 Carbohydrates [i](#)

There are no carbohydrates in this entry.

6.4 Ligands [i](#)

In the following table, the Atoms column lists the number of modelled atoms in the group and the number defined in the chemical component dictionary. The B-factors column lists the minimum, median, 95th percentile and maximum values of B factors of atoms in the group. The column labelled 'Q< 0.9' lists the number of atoms with occupancy less than 0.9.

Mol	Type	Chain	Res	Atoms	RSCC	RSR	B-factors(Å ²)	Q<0.9
2	7MU	A	403[D]	11/11	0.16	1.39	34,42,52,55	18
2	7MU	A	403[C]	11/11	0.16	1.39	34,42,52,55	18
2	7MU	A	401[C]	11/11	0.64	0.47	36,43,48,54	18
2	7MU	A	401[D]	11/11	0.64	0.47	36,43,48,54	18
2	7MU	A	402[D]	11/11	0.76	0.67	28,34,38,44	18
2	7MU	A	402[C]	11/11	0.76	0.67	28,34,38,44	18
3	TRS	A	404	8/8	0.77	0.20	30,84,128,154	0

6.5 Other polymers [i](#)

There are no such residues in this entry.