



# Full wwPDB X-ray Structure Validation Report ⓘ

May 13, 2020 – 08:22 pm BST

PDB ID : 5QFQ  
Title : PanDDA analysis group deposition – Crystal structure of PTP1B in complex with compound\_FMOOA000491a  
Authors : Keedy, D.A.; Hill, Z.B.; Biel, J.T.; Kang, E.; Rettenmaier, T.J.; Brandao-Neto, J.; von Delft, F.; Wells, J.A.; Fraser, J.S.  
Deposited on : 2018-08-30  
Resolution : 1.62 Å(reported)

This is a Full wwPDB X-ray Structure Validation Report for a publicly released PDB entry.

We welcome your comments at [validation@mail.wwpdb.org](mailto:validation@mail.wwpdb.org)

A user guide is available at

<https://www.wwpdb.org/validation/2017/XrayValidationReportHelp>

with specific help available everywhere you see the ⓘ symbol.

---

The following versions of software and data (see [references ⓘ](#)) were used in the production of this report:

MolProbity : 4.02b-467  
Mogul : 1.8.5 (274361), CSD as541be (2020)  
Xtriage (Phenix) : 1.13  
EDS : 2.11  
buster-report : 1.1.7 (2018)  
Percentile statistics : 20191225.v01 (using entries in the PDB archive December 25th 2019)  
Refmac : 5.8.0158  
CCP4 : 7.0.044 (Gargrove)  
Ideal geometry (proteins) : Engh & Huber (2001)  
Ideal geometry (DNA, RNA) : Parkinson et al. (1996)  
Validation Pipeline (wwPDB-VP) : 2.11

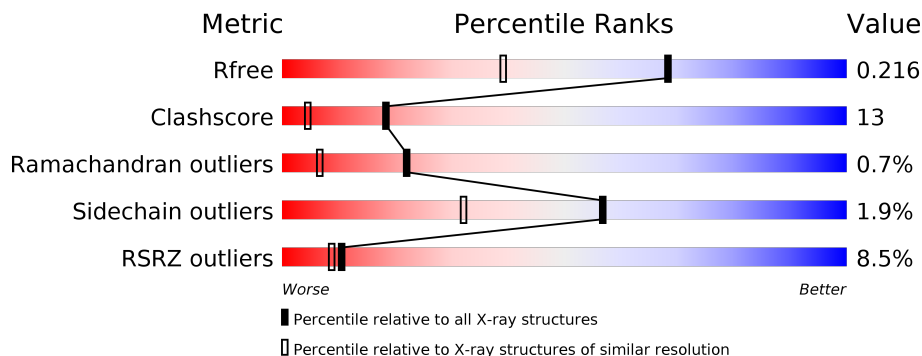
# 1 Overall quality at a glance

The following experimental techniques were used to determine the structure:

## X-RAY DIFFRACTION

The reported resolution of this entry is 1.62 Å.

Percentile scores (ranging between 0-100) for global validation metrics of the entry are shown in the following graphic. The table shows the number of entries on which the scores are based.



Metric	Whole archive (#Entries)	Similar resolution (#Entries, resolution range(Å))
$R_{free}$	130704	4693 (1.64-1.60)
Clashscore	141614	5002 (1.64-1.60)
Ramachandran outliers	138981	4888 (1.64-1.60)
Sidechain outliers	138945	4887 (1.64-1.60)
RSRZ outliers	127900	4609 (1.64-1.60)

The table below summarises the geometric issues observed across the polymeric chains and their fit to the electron density. The red, orange, yellow and green segments on the lower bar indicate the fraction of residues that contain outliers for  $\geq 3$ , 2, 1 and 0 types of geometric quality criteria respectively. A grey segment represents the fraction of residues that are not modelled. The numeric value for each fraction is indicated below the corresponding segment, with a dot representing fractions  $\leq 5\%$ . The upper red bar (where present) indicates the fraction of residues that have poor fit to the electron density. The numeric value is given above the bar.

Mol	Chain	Length	Quality of chain
1	A	321	

The following table lists non-polymeric compounds, carbohydrate monomers and non-standard residues in protein, DNA, RNA chains that are outliers for geometric or electron-density-fit criteria:

Mol	Type	Chain	Res	Chirality	Geometry	Clashes	Electron density
2	JK7	A	401[C]	-	-	-	X
2	JK7	A	401[D]	-	-	-	X

## 2 Entry composition [i](#)

There are 4 unique types of molecules in this entry. The entry contains 12694 atoms, of which 6209 are hydrogens and 0 are deuteriums.

In the tables below, the ZeroOcc column contains the number of atoms modelled with zero occupancy, the AltConf column contains the number of residues with at least one atom in alternate conformation and the Trace column contains the number of residues modelled with at most 2 atoms.

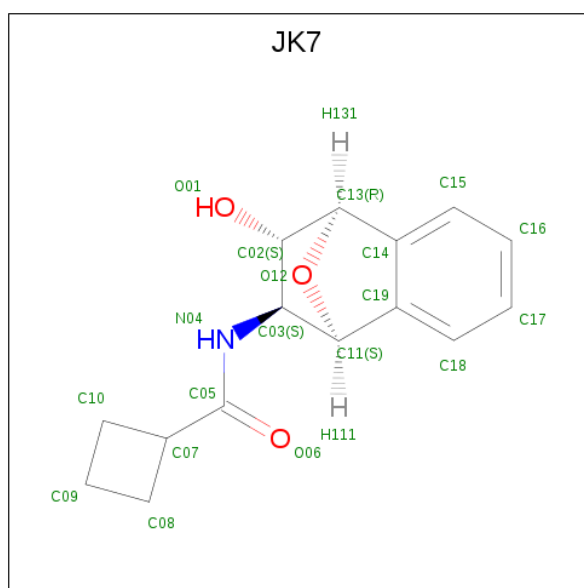
- Molecule 1 is a protein called Tyrosine-protein phosphatase non-receptor type 1.

Mol	Chain	Residues	Atoms					ZeroOcc	AltConf	Trace	
			Total	C	H	N	O				S
1	A	284	12332	3907	6163	1061	1168	33	0	153	0

There are 2 discrepancies between the modelled and reference sequences:

Chain	Residue	Modelled	Actual	Comment	Reference
A	32	SER	CYS	engineered mutation	UNP P18031
A	92	VAL	CYS	engineered mutation	UNP P18031

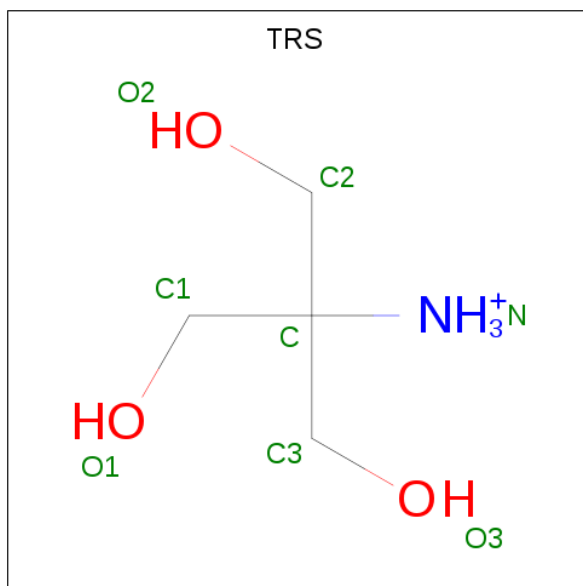
- Molecule 2 is N-[(1S,2S,3S,4R)-3-hydroxy-1,2,3,4-tetrahydro-1,4-epoxynaphthalen-2-yl]cyclobutanecarboxamide (three-letter code: JK7) (formula: C<sub>15</sub>H<sub>17</sub>NO<sub>3</sub>).



Mol	Chain	Residues	Atoms					ZeroOcc	AltConf
			Total	C	H	N	O		
2	A	1	72	30	34	2	6	0	1

- Molecule 3 is 2-AMINO-2-HYDROXYMETHYL-PROPANE-1,3-DIOL (three-letter code:

TRS) (formula: C<sub>4</sub>H<sub>12</sub>NO<sub>3</sub>).



Mol	Chain	Residues	Atoms					ZeroOcc	AltConf
			Total	C	H	N	O		
3	A	1	20	4	12	1	3	0	0

- Molecule 4 is water.

Mol	Chain	Residues	Atoms		ZeroOcc	AltConf
4	A	270	Total	O	0	0
			270	270		



## 4 Data and refinement statistics

Property	Value	Source
Space group	P 31 2 1	Depositor
Cell constants a, b, c, $\alpha$ , $\beta$ , $\gamma$	89.73Å 89.73Å 106.54Å 90.00° 90.00° 120.00°	Depositor
Resolution (Å)	44.86 – 1.62 44.86 – 1.62	Depositor EDS
% Data completeness (in resolution range)	99.9 (44.86-1.62) 99.9 (44.86-1.62)	Depositor EDS
$R_{merge}$	0.05	Depositor
$R_{sym}$	(Not available)	Depositor
$\langle I/\sigma(I) \rangle$ <sup>1</sup>	1.38 (at 1.63Å)	Xtrriage
Refinement program	PHENIX 1.10.1_2155	Depositor
R, $R_{free}$	0.191 , 0.215 0.192 , 0.216	Depositor DCC
$R_{free}$ test set	2485 reflections (3.93%)	wwPDB-VP
Wilson B-factor (Å <sup>2</sup> )	30.0	Xtrriage
Anisotropy	0.179	Xtrriage
Bulk solvent $k_{sol}$ (e/Å <sup>3</sup> ), $B_{sol}$ (Å <sup>2</sup> )	0.35 , 49.7	EDS
L-test for twinning <sup>2</sup>	$\langle  L  \rangle = 0.50$ , $\langle L^2 \rangle = 0.33$	Xtrriage
Estimated twinning fraction	0.022 for -h,-k,l	Xtrriage
$F_o, F_c$ correlation	0.96	EDS
Total number of atoms	12694	wwPDB-VP
Average B, all atoms (Å <sup>2</sup> )	43.0	wwPDB-VP

Xtrriage's analysis on translational NCS is as follows: *The largest off-origin peak in the Patterson function is 4.37% of the height of the origin peak. No significant pseudotranslation is detected.*

<sup>1</sup>Intensities estimated from amplitudes.

<sup>2</sup>Theoretical values of  $\langle |L| \rangle$ ,  $\langle L^2 \rangle$  for acentric reflections are 0.5, 0.333 respectively for untwinned datasets, and 0.375, 0.2 for perfectly twinned datasets.

## 5 Model quality i

### 5.1 Standard geometry i

Bond lengths and bond angles in the following residue types are not validated in this section: TRS, JK7

The Z score for a bond length (or angle) is the number of standard deviations the observed value is removed from the expected value. A bond length (or angle) with  $|Z| > 5$  is considered an outlier worth inspection. RMSZ is the root-mean-square of all Z scores of the bond lengths (or angles).

Mol	Chain	Bond lengths		Bond angles	
		RMSZ	# $ Z  > 5$	RMSZ	# $ Z  > 5$
1	A	0.49	4/6294 (0.1%)	0.65	4/8437 (0.0%)

All (4) bond length outliers are listed below:

Mol	Chain	Res	Type	Atoms	Z	Observed(Å)	Ideal(Å)
1	A	155[A]	VAL	CB-CG2	-5.21	1.42	1.52
1	A	155[B]	VAL	CB-CG2	-5.21	1.42	1.52
1	A	155[C]	VAL	CB-CG2	-5.21	1.42	1.52
1	A	155[D]	VAL	CB-CG2	-5.21	1.42	1.52

All (4) bond angle outliers are listed below:

Mol	Chain	Res	Type	Atoms	Z	Observed(°)	Ideal(°)
1	A	213	VAL	CA-CB-CG2	6.07	120.01	110.90
1	A	257	ARG	NE-CZ-NH1	6.01	123.30	120.30
1	A	213	VAL	CG1-CB-CG2	5.20	119.23	110.90
1	A	121	CYS	CA-CB-SG	5.20	123.35	114.00

There are no chirality outliers.

There are no planarity outliers.

### 5.2 Too-close contacts i

In the following table, the Non-H and H(model) columns list the number of non-hydrogen atoms and hydrogen atoms in the chain respectively. The H(added) column lists the number of hydrogen atoms added and optimized by MolProbity. The Clashes column lists the number of clashes within the asymmetric unit, whereas Symm-Clashes lists symmetry related clashes.

Mol	Chain	Non-H	H(model)	H(added)	Clashes	Symm-Clashes
1	A	6169	6163	6087	166	0
2	A	38	34	0	0	0
3	A	8	12	11	0	0
4	A	270	0	0	43	4
All	All	6485	6209	6098	166	4

The all-atom clashscore is defined as the number of clashes found per 1000 atoms (including hydrogen atoms). The all-atom clashscore for this structure is 13.

All (166) close contacts within the same asymmetric unit are listed below, sorted by their clash magnitude.

Atom-1	Atom-2	Interatomic distance (Å)	Clash overlap (Å)
1:A:38[C]:PRO:HD2	4:A:559:HOH:O	1.16	1.34
1:A:38[D]:PRO:HD2	4:A:559:HOH:O	1.16	1.34
1:A:200[C]:GLU:OE1	4:A:503:HOH:O	1.73	1.06
1:A:200[D]:GLU:OE1	4:A:503:HOH:O	1.73	1.06
1:A:280[C]:PHE:CD2	1:A:281[C]:ILE:HD13	1.93	1.02
1:A:280[D]:PHE:CD2	1:A:281[D]:ILE:HD13	1.93	1.02
1:A:280[D]:PHE:HD2	1:A:281[D]:ILE:HD13	1.25	0.99
1:A:280[C]:PHE:HD2	1:A:281[C]:ILE:HD13	1.25	0.99
1:A:280[D]:PHE:CD2	1:A:281[D]:ILE:CD1	2.49	0.96
1:A:280[C]:PHE:CD2	1:A:281[C]:ILE:CD1	2.49	0.96
1:A:280[C]:PHE:HD2	1:A:281[C]:ILE:CD1	1.83	0.89
1:A:280[D]:PHE:HD2	1:A:281[D]:ILE:CD1	1.83	0.89
1:A:92[D]:VAL:CG1	1:A:135:PHE:CE1	2.59	0.84
1:A:92[C]:VAL:CG1	1:A:135:PHE:CE1	2.59	0.84
1:A:10[C]:ILE:HD13	1:A:19[C]:ILE:HG13	1.60	0.83
1:A:10[D]:ILE:HD13	1:A:19[D]:ILE:HG13	1.60	0.83
1:A:24[A]:ARG:NH1	4:A:512:HOH:O	2.12	0.82
1:A:24[B]:ARG:NH1	4:A:512:HOH:O	2.12	0.82
1:A:247[C]:LYS:NZ	4:A:510:HOH:O	2.10	0.82
1:A:247[D]:LYS:NZ	4:A:510:HOH:O	2.10	0.82
1:A:262[A]:GLN:OE1	4:A:506:HOH:O	1.98	0.82
1:A:262[B]:GLN:OE1	4:A:506:HOH:O	1.98	0.82
1:A:227[C]:LEU:HB2	1:A:253[C]:MET:HE1	1.63	0.80
1:A:227[D]:LEU:HB2	1:A:253[D]:MET:HE1	1.63	0.80
1:A:22[A]:ASP:OD1	4:A:505:HOH:O	1.97	0.80
1:A:79[C]:ARG:HG3	1:A:233[C]:LEU:CD2	2.16	0.75
1:A:79[D]:ARG:HG3	1:A:233[D]:LEU:CD2	2.16	0.75
1:A:45[D]:ARG:NH2	1:A:121:CYS:HA	2.02	0.75
1:A:10[C]:ILE:CD1	1:A:19[C]:ILE:HG13	2.17	0.74
1:A:10[D]:ILE:CD1	1:A:19[D]:ILE:HG13	2.17	0.74

*Continued on next page...*



*Continued from previous page...*

Atom-1	Atom-2	Interatomic distance (Å)	Clash overlap (Å)
1:A:227[C]:LEU:HD13	1:A:253[C]:MET:CE	2.17	0.74
1:A:227[D]:LEU:HD13	1:A:253[D]:MET:CE	2.17	0.74
1:A:45[C]:ARG:NH2	1:A:121:CYS:HA	2.02	0.73
1:A:63[C]:ASP:OD2	4:A:507:HOH:O	2.05	0.73
1:A:63[D]:ASP:OD2	4:A:507:HOH:O	2.05	0.73
1:A:105[C]:ARG:HG2	1:A:105[C]:ARG:HH11	1.52	0.73
1:A:105[D]:ARG:HH11	1:A:105[D]:ARG:HG2	1.52	0.73
1:A:137[C]:ASP:O	4:A:508:HOH:O	2.09	0.71
1:A:137[D]:ASP:O	4:A:508:HOH:O	2.09	0.71
1:A:200[A]:GLU:OE2	4:A:511:HOH:O	2.11	0.68
1:A:200[B]:GLU:OE2	4:A:511:HOH:O	2.11	0.68
1:A:153[B]:TYR:HE1	1:A:155[B]:VAL:CG2	2.06	0.68
1:A:79[D]:ARG:HG3	1:A:233[D]:LEU:HD23	1.76	0.66
1:A:79[C]:ARG:HG3	1:A:233[C]:LEU:HD23	1.76	0.66
1:A:245[D]:ASP:HB3	1:A:248[D]:LYS:HB2	1.76	0.66
1:A:245[C]:ASP:HB3	1:A:248[C]:LYS:HB2	1.76	0.66
1:A:227[C]:LEU:HD13	1:A:253[C]:MET:HE2	1.78	0.65
1:A:227[D]:LEU:HD13	1:A:253[D]:MET:HE2	1.78	0.65
1:A:2[A]:GLU:HG2	1:A:3[A]:MET:N	2.12	0.64
1:A:2[B]:GLU:HG2	1:A:3[B]:MET:N	2.12	0.64
1:A:92[D]:VAL:HG11	1:A:135:PHE:HE1	1.61	0.64
1:A:92[C]:VAL:HG11	1:A:135:PHE:HE1	1.61	0.64
1:A:22[C]:ASP:OD2	4:A:505:HOH:O	2.15	0.64
1:A:22[D]:ASP:OD2	4:A:505:HOH:O	2.15	0.64
1:A:75[D]:GLU:O	1:A:78[D]:GLN:NE2	2.30	0.63
1:A:75[C]:GLU:O	1:A:78[C]:GLN:NE2	2.30	0.63
1:A:92[D]:VAL:HG11	1:A:135:PHE:CE1	2.34	0.60
1:A:3[D]:MET:CE	1:A:235[D]:MET:HE1	2.31	0.60
1:A:2[A]:GLU:HG2	1:A:3[A]:MET:H	1.67	0.60
1:A:2[B]:GLU:HG2	1:A:3[B]:MET:H	1.67	0.60
1:A:63[A]:ASP:OD2	4:A:507:HOH:O	2.17	0.60
1:A:63[B]:ASP:OD2	4:A:507:HOH:O	2.17	0.60
1:A:265[A]:ASP:CG	4:A:516:HOH:O	2.41	0.59
1:A:265[B]:ASP:CG	4:A:516:HOH:O	2.41	0.59
1:A:83:LEU:HD11	1:A:226[B]:CYS:SG	2.41	0.59
1:A:153[B]:TYR:HE1	1:A:155[B]:VAL:HG23	1.69	0.58
1:A:227[C]:LEU:CB	1:A:253[C]:MET:HE1	2.34	0.58
1:A:227[D]:LEU:CB	1:A:253[D]:MET:HE1	2.34	0.58
1:A:3[C]:MET:CE	1:A:235[C]:MET:CE	2.82	0.58
1:A:3[D]:MET:CE	1:A:235[D]:MET:CE	2.82	0.58
1:A:3[D]:MET:HE1	1:A:235[D]:MET:CE	2.34	0.57

*Continued on next page...*

*Continued from previous page...*

Atom-1	Atom-2	Interatomic distance (Å)	Clash overlap (Å)
1:A:47[C]:ARG:NH1	1:A:48[C]:ASP:HB3	2.20	0.57
1:A:47[D]:ARG:NH1	1:A:48[D]:ASP:HB3	2.20	0.57
1:A:92[D]:VAL:HG12	1:A:135:PHE:CE1	2.38	0.57
1:A:227[D]:LEU:HD13	1:A:253[D]:MET:HE1	1.86	0.57
1:A:227[C]:LEU:HD13	1:A:253[C]:MET:HE1	1.86	0.57
1:A:105[D]:ARG:NH1	1:A:105[D]:ARG:HG2	2.21	0.55
1:A:105[C]:ARG:HG2	1:A:105[C]:ARG:NH1	2.21	0.55
1:A:105[C]:ARG:CG	1:A:105[C]:ARG:HH11	2.19	0.55
1:A:105[D]:ARG:HH11	1:A:105[D]:ARG:CG	2.19	0.55
1:A:281[D]:ILE:HD13	1:A:281[D]:ILE:N	2.22	0.54
1:A:281[C]:ILE:HD13	1:A:281[C]:ILE:N	2.22	0.54
1:A:153[B]:TYR:CE1	1:A:155[B]:VAL:HG23	2.42	0.54
1:A:105[C]:ARG:CG	1:A:105[C]:ARG:NH1	2.71	0.54
1:A:105[D]:ARG:CG	1:A:105[D]:ARG:NH1	2.71	0.54
1:A:3[C]:MET:HE1	1:A:235[C]:MET:CE	2.38	0.54
1:A:116[C]:LYS:HE3	4:A:548:HOH:O	2.09	0.53
1:A:116[D]:LYS:HE3	4:A:548:HOH:O	2.09	0.53
1:A:92[A]:VAL:HG12	1:A:135:PHE:CE1	2.44	0.53
1:A:92[B]:VAL:HG12	1:A:135:PHE:CE1	2.44	0.53
1:A:3[C]:MET:CE	1:A:235[C]:MET:HE1	2.40	0.52
1:A:3[C]:MET:CE	1:A:235[C]:MET:HE3	2.40	0.52
1:A:3[A]:MET:HE1	1:A:274[A]:VAL:HG12	1.91	0.52
1:A:3[B]:MET:HE1	1:A:274[B]:VAL:HG12	1.91	0.52
1:A:92[D]:VAL:HG12	1:A:135:PHE:CD1	2.45	0.51
1:A:92[C]:VAL:HG12	1:A:135:PHE:CD1	2.45	0.51
1:A:161[C]:GLU:HG3	1:A:168[C]:THR:HG22	1.93	0.51
1:A:161[D]:GLU:HG3	1:A:168[D]:THR:HG22	1.93	0.51
1:A:3[C]:MET:HE3	1:A:235[C]:MET:CE	2.42	0.49
1:A:6[C]:GLU:OE2	1:A:247[C]:LYS:HE2	2.14	0.48
1:A:6[D]:GLU:OE2	1:A:247[D]:LYS:HE2	2.14	0.48
1:A:227[C]:LEU:CD1	1:A:253[C]:MET:HE1	2.43	0.48
1:A:227[D]:LEU:CD1	1:A:253[D]:MET:HE1	2.43	0.48
1:A:116[C]:LYS:NZ	4:A:504:HOH:O	1.75	0.47
1:A:116[D]:LYS:NZ	4:A:504:HOH:O	1.75	0.47
1:A:73[C]:LYS:NZ	4:A:501:HOH:O	0.63	0.47
1:A:73[D]:LYS:NZ	4:A:501:HOH:O	0.63	0.47
1:A:265[C]:ASP:CG	4:A:516:HOH:O	2.52	0.47
1:A:265[D]:ASP:CG	4:A:516:HOH:O	2.52	0.47
1:A:20:TYR:CE2	1:A:24[D]:ARG:HD2	2.49	0.47
1:A:3[C]:MET:HE1	1:A:235[C]:MET:HE3	1.97	0.47
1:A:20:TYR:CE2	1:A:24[C]:ARG:HD2	2.49	0.47

*Continued on next page...*

*Continued from previous page...*

Atom-1	Atom-2	Interatomic distance (Å)	Clash overlap (Å)
1:A:163[C]:LEU:O	4:A:509:HOH:O	2.10	0.47
1:A:163[D]:LEU:O	4:A:509:HOH:O	2.10	0.47
1:A:6[A]:GLU:OE2	1:A:247[A]:LYS:HE3	2.15	0.46
1:A:6[B]:GLU:OE2	1:A:247[B]:LYS:HE3	2.15	0.46
1:A:45[A]:ARG:NH2	1:A:121:CYS:HA	2.29	0.46
1:A:45[B]:ARG:NH2	1:A:121:CYS:HA	2.29	0.46
1:A:92[C]:VAL:HG11	1:A:135:PHE:CE1	2.34	0.46
1:A:227[C]:LEU:CD1	1:A:253[C]:MET:CE	2.91	0.46
1:A:227[D]:LEU:CD1	1:A:253[D]:MET:CE	2.91	0.46
1:A:92[C]:VAL:HG12	1:A:135:PHE:CE1	2.38	0.46
1:A:234[C]:LEU:HA	1:A:234[C]:LEU:HD23	1.87	0.45
1:A:234[D]:LEU:HD23	1:A:234[D]:LEU:HA	1.87	0.45
1:A:153[B]:TYR:CE1	1:A:155[B]:VAL:CG2	2.94	0.45
1:A:281[C]:ILE:CD1	1:A:281[C]:ILE:N	2.80	0.45
1:A:281[D]:ILE:CD1	1:A:281[D]:ILE:N	2.80	0.45
1:A:139[C]:ASN:O	1:A:163[C]:LEU:HB2	2.17	0.44
1:A:139[D]:ASN:O	1:A:163[D]:LEU:HB2	2.17	0.44
1:A:116[A]:LYS:NZ	4:A:504:HOH:O	2.16	0.44
1:A:116[B]:LYS:NZ	4:A:504:HOH:O	2.16	0.44
1:A:3[D]:MET:HE3	1:A:235[D]:MET:CE	2.47	0.44
1:A:147[C]:GLU:HG3	1:A:156:ARG:HG2	1.98	0.44
1:A:147[D]:GLU:HG3	1:A:156:ARG:HG2	1.98	0.44
1:A:241[C]:PRO:HG3	4:A:554:HOH:O	2.17	0.43
1:A:241[D]:PRO:HG3	4:A:554:HOH:O	2.17	0.43
1:A:3[D]:MET:CE	1:A:235[D]:MET:HE3	2.49	0.43
1:A:3[D]:MET:HE1	1:A:235[D]:MET:HE1	1.98	0.43
1:A:235[C]:MET:HG3	1:A:244[C]:VAL:HG21	2.01	0.43
1:A:235[D]:MET:HG3	1:A:244[D]:VAL:HG21	2.01	0.43
1:A:100[D]:TRP:CZ2	1:A:162[D]:ASN:HB2	2.53	0.43
1:A:100[C]:TRP:CZ2	1:A:162[C]:ASN:HB2	2.53	0.43
1:A:3[D]:MET:HE3	1:A:235[D]:MET:HE1	2.00	0.43
1:A:280[C]:PHE:HA	1:A:284[C]:ASP:C	2.39	0.43
1:A:280[D]:PHE:HA	1:A:284[D]:ASP:C	2.39	0.43
1:A:90[C]:ASN:OD1	1:A:90[C]:ASN:N	2.49	0.42
1:A:90[D]:ASN:OD1	1:A:90[D]:ASN:N	2.49	0.42
1:A:137[C]:ASP:HA	4:A:508:HOH:O	2.18	0.42
1:A:137[D]:ASP:HA	4:A:508:HOH:O	2.18	0.42
1:A:280[C]:PHE:CE2	1:A:281[C]:ILE:CD1	3.01	0.42
1:A:280[D]:PHE:CE2	1:A:281[D]:ILE:CD1	3.01	0.42
1:A:153[A]:TYR:OH	1:A:197[A]:LYS:HG3	2.20	0.42
1:A:280[C]:PHE:CD2	1:A:281[C]:ILE:HD11	2.51	0.42

*Continued on next page...*

Continued from previous page...

Atom-1	Atom-2	Interatomic distance (Å)	Clash overlap (Å)
1:A:280[D]:PHE:CD2	1:A:281[D]:ILE:HD11	2.51	0.42
1:A:3[C]:MET:HE3	1:A:235[C]:MET:HE1	2.02	0.41
1:A:239[C]:LYS:NZ	4:A:525:HOH:O	2.54	0.41
1:A:239[D]:LYS:NZ	4:A:525:HOH:O	2.54	0.41
1:A:3[D]:MET:HE1	1:A:235[D]:MET:HE3	2.03	0.41
1:A:139[C]:ASN:HA	1:A:139[C]:ASN:HD22	1.72	0.41
1:A:139[D]:ASN:HA	1:A:139[D]:ASN:HD22	1.72	0.41
1:A:239[C]:LYS:HE3	4:A:679:HOH:O	2.21	0.41
1:A:239[D]:LYS:HE3	4:A:679:HOH:O	2.21	0.41
1:A:2[A]:GLU:CG	1:A:3[A]:MET:H	2.34	0.40
1:A:2[B]:GLU:CG	1:A:3[B]:MET:H	2.34	0.40
1:A:34:VAL:HA	1:A:37[C]:LEU:HG	2.04	0.40
1:A:34:VAL:HA	1:A:37[D]:LEU:HG	2.04	0.40

All (4) symmetry-related close contacts are listed below. The label for Atom-2 includes the symmetry operator and encoded unit-cell translations to be applied.

Atom-1	Atom-2	Interatomic distance (Å)	Clash overlap (Å)
4:A:691:HOH:O	4:A:713:HOH:O[4_655]	1.71	0.49
4:A:560:HOH:O	4:A:726:HOH:O[4_655]	1.84	0.36
4:A:726:HOH:O	4:A:727:HOH:O[4_545]	2.03	0.17
4:A:563:HOH:O	4:A:726:HOH:O[4_655]	2.05	0.15

## 5.3 Torsion angles [i](#)

### 5.3.1 Protein backbone [i](#)

In the following table, the Percentiles column shows the percent Ramachandran outliers of the chain as a percentile score with respect to all X-ray entries followed by that with respect to entries of similar resolution.

The Analysed column shows the number of residues for which the backbone conformation was analysed, and the total number of residues.

Mol	Chain	Analysed	Favoured	Allowed	Outliers	Percentiles
1	A	733/321 (228%)	701 (96%)	27 (4%)	5 (1%)	22 7

All (5) Ramachandran outliers are listed below:

Mol	Chain	Res	Type
1	A	281[A]	ILE
1	A	281[B]	ILE
1	A	281[C]	ILE
1	A	281[D]	ILE
1	A	261	ILE

### 5.3.2 Protein sidechains [i](#)

In the following table, the Percentiles column shows the percent sidechain outliers of the chain as a percentile score with respect to all X-ray entries followed by that with respect to entries of similar resolution.

The Analysed column shows the number of residues for which the sidechain conformation was analysed, and the total number of residues.

Mol	Chain	Analysed	Rotameric	Outliers	Percentiles
1	A	690/294 (235%)	673 (98%)	17 (2%)	47 21

All (17) residues with a non-rotameric sidechain are listed below:

Mol	Chain	Res	Type
1	A	61[A]	GLN
1	A	61[B]	GLN
1	A	61[C]	GLN
1	A	61[D]	GLN
1	A	72	ILE
1	A	79[A]	ARG
1	A	79[B]	ARG
1	A	79[C]	ARG
1	A	79[D]	ARG
1	A	265[A]	ASP
1	A	265[B]	ASP
1	A	265[C]	ASP
1	A	265[D]	ASP
1	A	281[A]	ILE
1	A	281[B]	ILE
1	A	281[C]	ILE
1	A	281[D]	ILE

Some sidechains can be flipped to improve hydrogen bonding and reduce clashes. All (3) such sidechains are listed below:

Mol	Chain	Res	Type
1	A	42	ASN
1	A	68	ASN
1	A	208	HIS

### 5.3.3 RNA [i](#)

There are no RNA molecules in this entry.

### 5.4 Non-standard residues in protein, DNA, RNA chains [i](#)

There are no non-standard protein/DNA/RNA residues in this entry.

### 5.5 Carbohydrates [i](#)

There are no carbohydrates in this entry.

### 5.6 Ligand geometry [i](#)

3 ligands are modelled in this entry.

In the following table, the Counts columns list the number of bonds (or angles) for which Mogul statistics could be retrieved, the number of bonds (or angles) that are observed in the model and the number of bonds (or angles) that are defined in the Chemical Component Dictionary. The Link column lists molecule types, if any, to which the group is linked. The Z score for a bond length (or angle) is the number of standard deviations the observed value is removed from the expected value. A bond length (or angle) with  $|Z| > 2$  is considered an outlier worth inspection. RMSZ is the root-mean-square of all Z scores of the bond lengths (or angles).

Mol	Type	Chain	Res	Link	Bond lengths			Bond angles		
					Counts	RMSZ	# Z  > 2	Counts	RMSZ	# Z  > 2
2	JK7	A	401[D]	-	22,22,22	2.07	7 (31%)	24,33,33	2.31	9 (37%)
2	JK7	A	401[C]	-	22,22,22	2.07	7 (31%)	24,33,33	2.31	9 (37%)
3	TRS	A	402	-	7,7,7	0.87	0	9,9,9	0.95	0

In the following table, the Chirals column lists the number of chiral outliers, the number of chiral centers analysed, the number of these observed in the model and the number defined in the Chemical Component Dictionary. Similar counts are reported in the Torsion and Rings columns. '-' means no outliers of that kind were identified.

Mol	Type	Chain	Res	Link	Chirals	Torsions	Rings
2	JK7	A	401[D]	-	-	3/8/38/38	0/5/4/4

*Continued on next page...*

Continued from previous page...

Mol	Type	Chain	Res	Link	Chirals	Torsions	Rings
2	JK7	A	401[C]	-	-	3/8/38/38	0/5/4/4
3	TRS	A	402	-	-	3/9/9/9	-

All (14) bond length outliers are listed below:

Mol	Chain	Res	Type	Atoms	Z	Observed(Å)	Ideal(Å)
2	A	401[D]	JK7	C02-C03	6.41	1.65	1.53
2	A	401[C]	JK7	C02-C03	6.41	1.65	1.53
2	A	401[D]	JK7	C02-C13	3.65	1.58	1.54
2	A	401[C]	JK7	C02-C13	3.65	1.58	1.54
2	A	401[D]	JK7	C05-N04	2.87	1.40	1.34
2	A	401[C]	JK7	C05-N04	2.87	1.40	1.34
2	A	401[D]	JK7	C19-C11	-2.65	1.46	1.51
2	A	401[C]	JK7	C19-C11	-2.65	1.46	1.51
2	A	401[D]	JK7	C08-C07	2.17	1.58	1.54
2	A	401[C]	JK7	C08-C07	2.17	1.58	1.54
2	A	401[D]	JK7	C10-C07	2.04	1.57	1.54
2	A	401[C]	JK7	C10-C07	2.04	1.57	1.54
2	A	401[D]	JK7	C18-C19	-2.00	1.37	1.39
2	A	401[C]	JK7	C18-C19	-2.00	1.37	1.39

All (18) bond angle outliers are listed below:

Mol	Chain	Res	Type	Atoms	Z	Observed(°)	Ideal(°)
2	A	401[D]	JK7	C17-C18-C19	-4.77	114.95	121.01
2	A	401[C]	JK7	C17-C18-C19	-4.77	114.95	121.01
2	A	401[D]	JK7	C07-C05-N04	4.26	123.58	116.21
2	A	401[C]	JK7	C07-C05-N04	4.26	123.58	116.21
2	A	401[D]	JK7	C16-C15-C14	-3.94	116.01	121.01
2	A	401[C]	JK7	C16-C15-C14	-3.94	116.01	121.01
2	A	401[D]	JK7	C18-C19-C14	3.92	124.93	120.65
2	A	401[C]	JK7	C18-C19-C14	3.92	124.93	120.65
2	A	401[D]	JK7	O12-C13-C02	-3.72	98.63	104.66
2	A	401[C]	JK7	O12-C13-C02	-3.72	98.63	104.66
2	A	401[D]	JK7	O06-C05-C07	-2.98	118.24	122.12
2	A	401[C]	JK7	O06-C05-C07	-2.98	118.24	122.12
2	A	401[D]	JK7	O06-C05-N04	-2.56	118.18	122.93
2	A	401[C]	JK7	O06-C05-N04	-2.56	118.18	122.93
2	A	401[D]	JK7	C09-C10-C07	2.39	90.43	88.41
2	A	401[C]	JK7	C09-C10-C07	2.39	90.43	88.41
2	A	401[D]	JK7	C09-C08-C07	2.25	90.32	88.41
2	A	401[C]	JK7	C09-C08-C07	2.25	90.32	88.41

There are no chirality outliers.

All (9) torsion outliers are listed below:

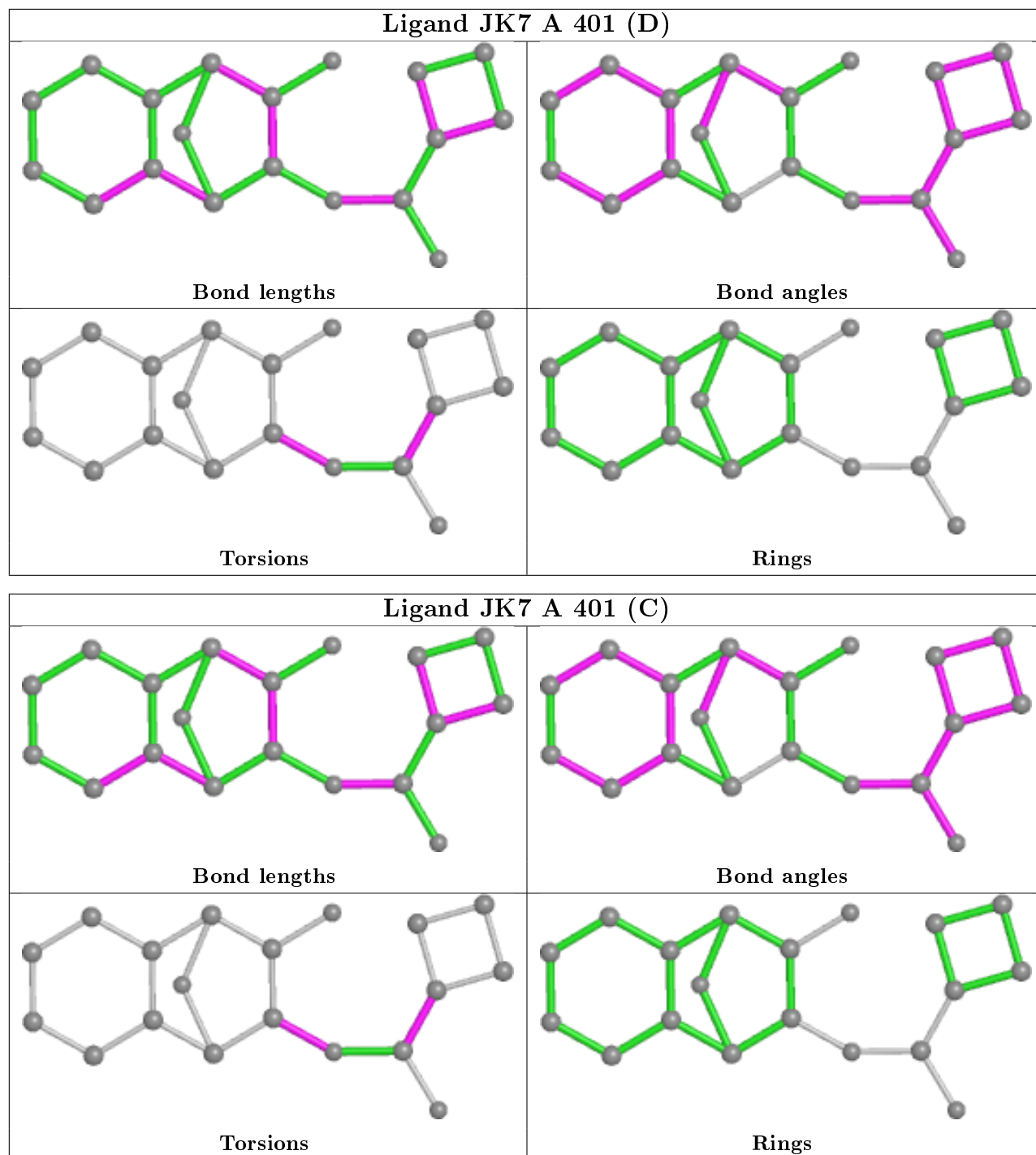
Mol	Chain	Res	Type	Atoms
2	A	401[D]	JK7	C11-C03-N04-C05
2	A	401[C]	JK7	C11-C03-N04-C05
3	A	402	TRS	C2-C-C1-O1
3	A	402	TRS	C3-C-C1-O1
3	A	402	TRS	N-C-C1-O1
2	A	401[D]	JK7	O06-C05-C07-C08
2	A	401[C]	JK7	O06-C05-C07-C08
2	A	401[D]	JK7	N04-C05-C07-C08
2	A	401[C]	JK7	N04-C05-C07-C08

There are no ring outliers.

No monomer is involved in short contacts.

The following is a two-dimensional graphical depiction of Mogul quality analysis of bond lengths, bond angles, torsion angles, and ring geometry for all instances of the Ligand of Interest. In addition, ligands with molecular weight > 250 and outliers as shown on the validation Tables will also be included. For torsion angles, if less than 5% of the Mogul distribution of torsion angles is within 10 degrees of the torsion angle in question, then that torsion angle is considered an outlier. Any bond that is central to one or more torsion angles identified as an outlier by Mogul will be highlighted in the graph. For rings, the root-mean-square deviation (RMSD) between the ring in question and similar rings identified by Mogul is calculated over all ring torsion angles. If the average RMSD is greater than 60 degrees and the minimal RMSD between the ring in question and any Mogul-identified rings is also greater than 60 degrees, then that ring is considered an outlier. The outliers are highlighted in purple. The color gray indicates Mogul did not find sufficient equivalents in the CSD to analyse the geometry.





## 5.7 Other polymers [i](#)

There are no such residues in this entry.

## 5.8 Polymer linkage issues [i](#)

The following chains have linkage breaks:

Mol	Chain	Number of breaks
1	A	10

All chain breaks are listed below:

Model	Chain	Residue-1	Atom-1	Residue-2	Atom-2	Distance (Å)
1	A	43:ARG	C	44[C]:ASN	N	1.18
1	A	43:ARG	C	44[D]:ASN	N	1.18
1	A	227[C]:LEU	C	228:ALA	N	1.18
1	A	227[D]:LEU	C	228:ALA	N	1.18
1	A	57:ILE	C	58[C]:LYS	N	1.17
1	A	57:ILE	C	58[D]:LYS	N	1.17
1	A	99:VAL	C	100[C]:TRP	N	1.15
1	A	99:VAL	C	100[D]:TRP	N	1.15
1	A	278:ALA	C	279[C]:LYS	N	1.12
1	A	278:ALA	C	279[D]:LYS	N	1.12

## 6 Fit of model and data

### 6.1 Protein, DNA and RNA chains

In the following table, the column labelled ‘#RSRZ> 2’ contains the number (and percentage) of RSRZ outliers, followed by percent RSRZ outliers for the chain as percentile scores relative to all X-ray entries and entries of similar resolution. The OWAB column contains the minimum, median, 95<sup>th</sup> percentile and maximum values of the occupancy-weighted average B-factor per residue. The column labelled ‘Q< 0.9’ lists the number of (and percentage) of residues with an average occupancy less than 0.9.

Mol	Chain	Analysed	<RSRZ>	#RSRZ>2	OWAB(Å <sup>2</sup> )	Q<0.9
1	A	284/321 (88%)	0.35	24 (8%) <b>10</b> <b>9</b>	22, 33, 59, 76	2 (0%)

All (24) RSRZ outliers are listed below:

Mol	Chain	Res	Type	RSRZ
1	A	284[C]	ASP	10.4
1	A	1[A]	MET	7.4
1	A	281[A]	ILE	6.1
1	A	280[A]	PHE	5.7
1	A	282[A]	MET	5.1
1	A	12[A]	LYS	4.4
1	A	5[A]	LYS	3.8
1	A	63[A]	ASP	3.6
1	A	2[A]	GLU	3.6
1	A	62[A]	GLU	3.4
1	A	9[A]	GLN	3.4
1	A	165[A]	THR	3.1
1	A	47[A]	ARG	2.9
1	A	10[A]	ILE	2.9
1	A	182[A]	PHE	2.7
1	A	25[A]	HIS	2.6
1	A	139[A]	ASN	2.4
1	A	152[A]	TYR	2.4
1	A	7[A]	PHE	2.3
1	A	186[A]	GLU	2.3
1	A	13[A]	SER	2.2
1	A	283[C]	GLY	2.1
1	A	3[A]	MET	2.1
1	A	8[A]	GLU	2.1

## 6.2 Non-standard residues in protein, DNA, RNA chains [i](#)

There are no non-standard protein/DNA/RNA residues in this entry.

## 6.3 Carbohydrates [i](#)

There are no carbohydrates in this entry.

## 6.4 Ligands [i](#)

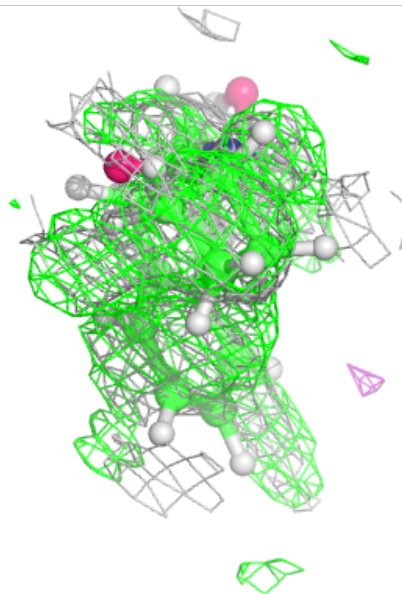
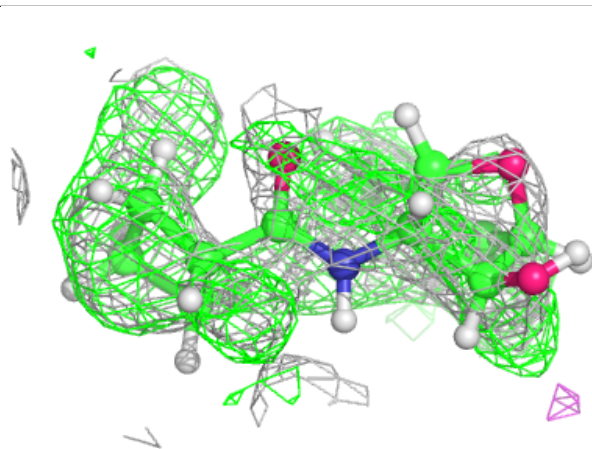
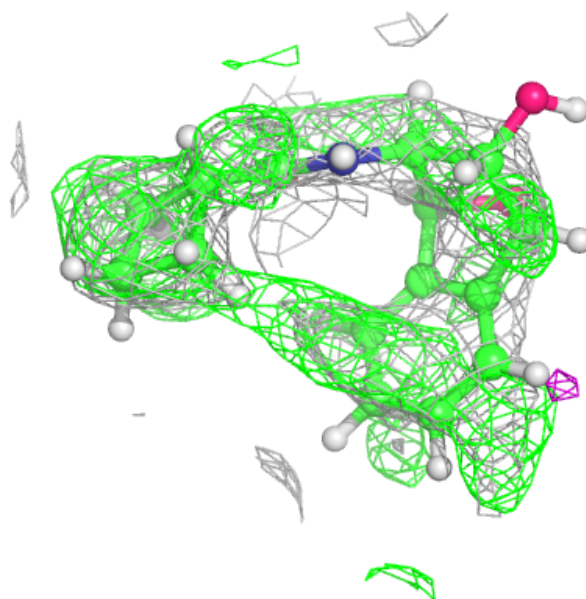
In the following table, the Atoms column lists the number of modelled atoms in the group and the number defined in the chemical component dictionary. The B-factors column lists the minimum, median, 95<sup>th</sup> percentile and maximum values of B factors of atoms in the group. The column labelled 'Q< 0.9' lists the number of atoms with occupancy less than 0.9.

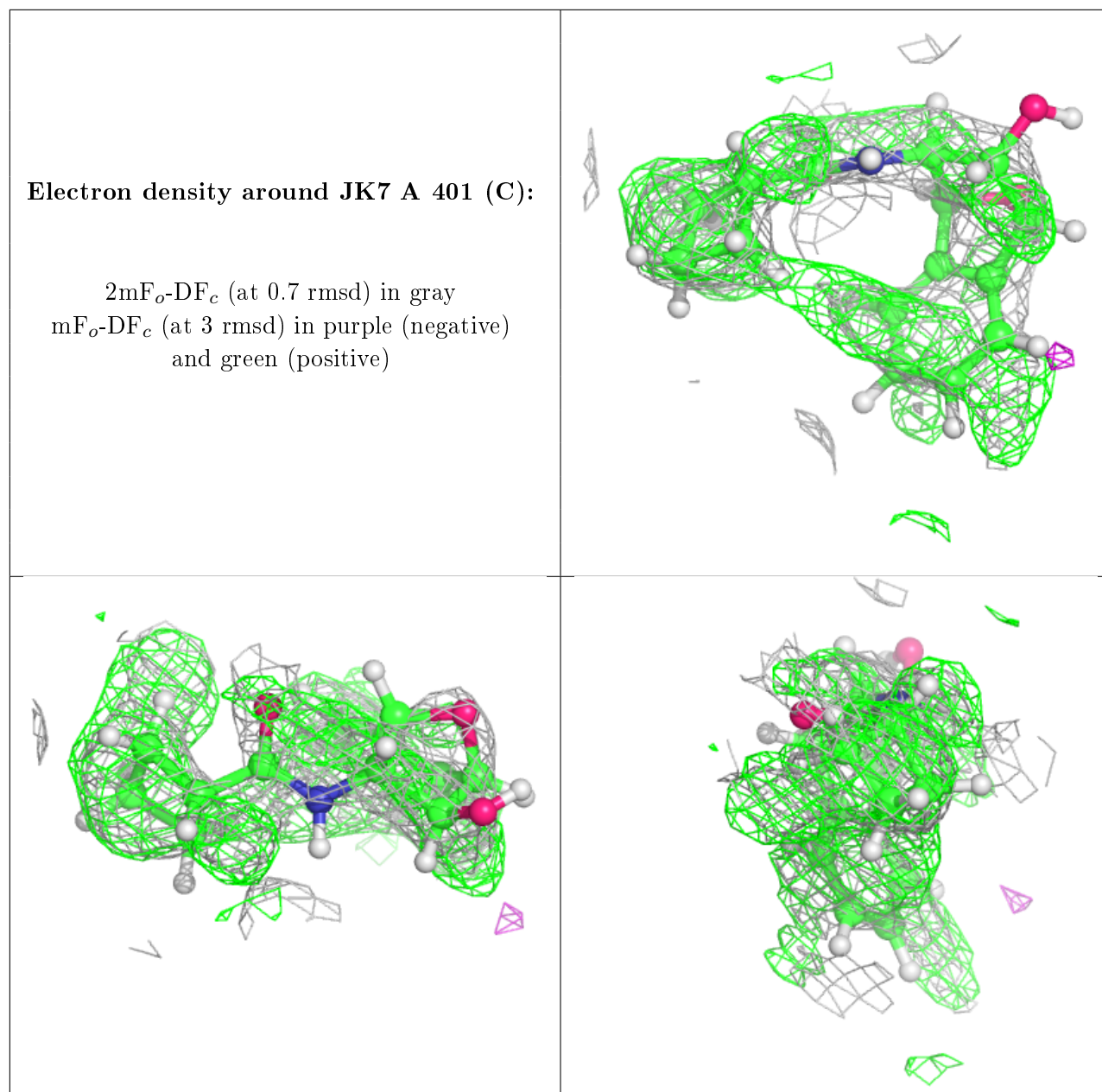
Mol	Type	Chain	Res	Atoms	RSCC	RSR	B-factors(Å <sup>2</sup> )	Q<0.9
2	JK7	A	401[D]	19/19	0.23	0.47	26,39,51,52	36
2	JK7	A	401[C]	19/19	0.23	0.47	26,39,51,52	36
3	TRS	A	402	8/8	0.80	0.17	19,65,104,104	0

The following is a graphical depiction of the model fit to experimental electron density of all instances of the Ligand of Interest. In addition, ligands with molecular weight > 250 and outliers as shown on the geometry validation Tables will also be included. Each fit is shown from different orientation to approximate a three-dimensional view.

**Electron density around JK7 A 401 (D):**

$2mF_o-DF_c$  (at 0.7 rmsd) in gray  
 $mF_o-DF_c$  (at 3 rmsd) in purple (negative)  
and green (positive)





## 6.5 Other polymers [i](#)

There are no such residues in this entry.