



Full wwPDB X-ray Structure Validation Report ⓘ

Jan 23, 2021 – 01:56 PM GMT

PDB ID : 6QFS
Title : Chargeless variant of the Cellulose-binding domain from *Cellulomonas fimi*
Authors : Young, D.R.; Hoejgaard, C.; Messens, J.; Winther, J.R.
Deposited on : 2019-01-10
Resolution : 2.20 Å(reported)

This is a Full wwPDB X-ray Structure Validation Report for a publicly released PDB entry.

We welcome your comments at validation@mail.wwpdb.org

A user guide is available at

<https://www.wwpdb.org/validation/2017/XrayValidationReportHelp>

with specific help available everywhere you see the ⓘ symbol.

The following versions of software and data (see [references ⓘ](#)) were used in the production of this report:

MolProbity : 4.02b-467
Mogul : 1.8.5 (274361), CSD as541be (2020)
Xtriage (Phenix) : 1.13
EDS : 2.16
Percentile statistics : 20191225.v01 (using entries in the PDB archive December 25th 2019)
Refmac : 5.8.0158
CCP4 : 7.0.044 (Gargrove)
Ideal geometry (proteins) : Engh & Huber (2001)
Ideal geometry (DNA, RNA) : Parkinson et al. (1996)
Validation Pipeline (wwPDB-VP) : 2.16

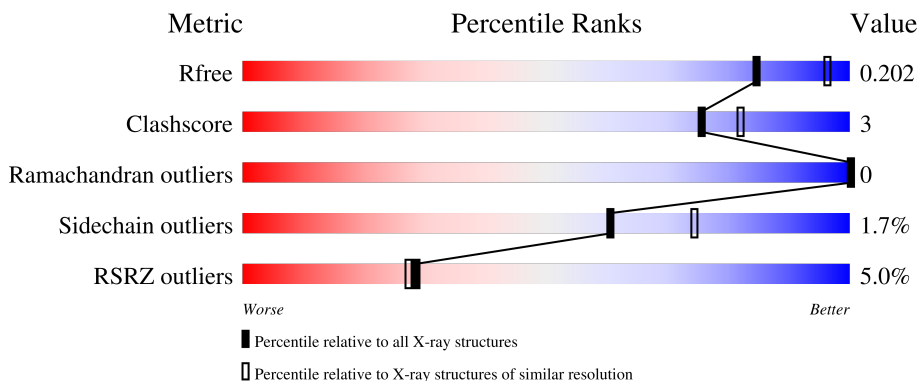
1 Overall quality at a glance

The following experimental techniques were used to determine the structure:

X-RAY DIFFRACTION

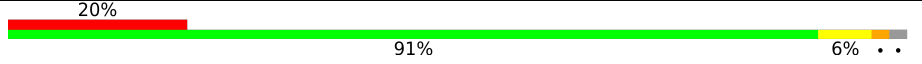
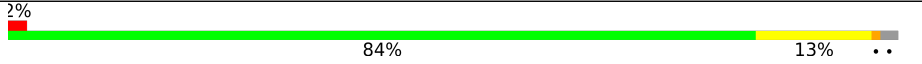
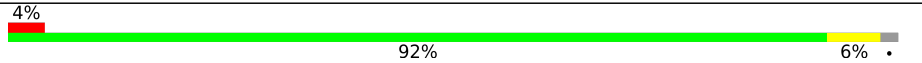
The reported resolution of this entry is 2.20 Å.

Percentile scores (ranging between 0-100) for global validation metrics of the entry are shown in the following graphic. The table shows the number of entries on which the scores are based.



Metric	Whole archive (#Entries)	Similar resolution (#Entries, resolution range(Å))
R_{free}	130704	4898 (2.20-2.20)
Clashscore	141614	5594 (2.20-2.20)
Ramachandran outliers	138981	5503 (2.20-2.20)
Sidechain outliers	138945	5504 (2.20-2.20)
RSRZ outliers	127900	4800 (2.20-2.20)

The table below summarises the geometric issues observed across the polymeric chains and their fit to the electron density. The red, orange, yellow and green segments of the lower bar indicate the fraction of residues that contain outliers for ≥ 3 , 2, 1 and 0 types of geometric quality criteria respectively. A grey segment represents the fraction of residues that are not modelled. The numeric value for each fraction is indicated below the corresponding segment, with a dot representing fractions $\leq 5\%$. The upper red bar (where present) indicates the fraction of residues that have poor fit to the electron density. The numeric value is given above the bar.

Mol	Chain	Length	Quality of chain
1	A	106	 20% 91% 6% ..
1	B	106	 2% 92% 8%
1	C	106	 2% 84% 13% ..
1	D	106	 % 89% 11%
1	E	106	 4% 92% 6% .

Continued on next page...

Continued from previous page...

Mol	Chain	Length	Quality of chain
1	F	106	<p>4% 95% 7%</p>
1	G	106	<p>2% 93% 7% 8%</p>
1	H	106	<p>6% 91% 8%</p>

The following table lists non-polymeric compounds, carbohydrate monomers and non-standard residues in protein, DNA, RNA chains that are outliers for geometric or electron-density-fit criteria:

Mol	Type	Chain	Res	Chirality	Geometry	Clashes	Electron density
4	FMT	H	203	-	-	-	X

2 Entry composition i

There are 9 unique types of molecules in this entry. The entry contains 6683 atoms, of which 0 are hydrogens and 0 are deuteriums.

In the tables below, the ZeroOcc column contains the number of atoms modelled with zero occupancy, the AltConf column contains the number of residues with at least one atom in alternate conformation and the Trace column contains the number of residues modelled with at most 2 atoms.

- Molecule 1 is a protein called Exoglucanase/xylanase.

Mol	Chain	Residues	Atoms					ZeroOcc	AltConf	Trace
			Total	C	N	O	S			
1	A	104	786	494	134	156	2	0	4	0
1	B	106	795	497	137	159	2	0	5	0
1	C	104	759	476	129	152	2	0	2	0
1	D	106	768	480	132	153	3	0	1	0
1	E	104	773	487	132	152	2	0	2	0
1	F	105	777	488	133	154	2	0	2	0
1	G	106	771	482	133	154	2	0	1	0
1	H	106	770	481	133	154	2	0	1	0

There are 40 discrepancies between the modelled and reference sequences:

Chain	Residue	Modelled	Actual	Comment	Reference
A	1	ALA	-	expression tag	UNP P07986
A	24	GLN	LYS	conflict	UNP P07986
A	32	GLN	ASP	conflict	UNP P07986
A	64	GLN	ARG	conflict	UNP P07986
A	86	TRP	HIS	conflict	UNP P07986
B	1	ALA	-	expression tag	UNP P07986
B	24	GLN	LYS	conflict	UNP P07986
B	32	GLN	ASP	conflict	UNP P07986
B	64	GLN	ARG	conflict	UNP P07986
B	86	TRP	HIS	conflict	UNP P07986
C	1	ALA	-	expression tag	UNP P07986
C	24	GLN	LYS	conflict	UNP P07986
C	32	GLN	ASP	conflict	UNP P07986

Continued on next page...

Continued from previous page...

Chain	Residue	Modelled	Actual	Comment	Reference
C	64	GLN	ARG	conflict	UNP P07986
C	86	TRP	HIS	conflict	UNP P07986
D	1	ALA	-	expression tag	UNP P07986
D	24	GLN	LYS	conflict	UNP P07986
D	32	GLN	ASP	conflict	UNP P07986
D	64	GLN	ARG	conflict	UNP P07986
D	86	TRP	HIS	conflict	UNP P07986
E	1	ALA	-	expression tag	UNP P07986
E	24	GLN	LYS	conflict	UNP P07986
E	32	GLN	ASP	conflict	UNP P07986
E	64	GLN	ARG	conflict	UNP P07986
E	86	TRP	HIS	conflict	UNP P07986
F	1	ALA	-	expression tag	UNP P07986
F	24	GLN	LYS	conflict	UNP P07986
F	32	GLN	ASP	conflict	UNP P07986
F	64	GLN	ARG	conflict	UNP P07986
F	86	TRP	HIS	conflict	UNP P07986
G	1	ALA	-	expression tag	UNP P07986
G	24	GLN	LYS	conflict	UNP P07986
G	32	GLN	ASP	conflict	UNP P07986
G	64	GLN	ARG	conflict	UNP P07986
G	86	TRP	HIS	conflict	UNP P07986
H	1	ALA	-	expression tag	UNP P07986
H	24	GLN	LYS	conflict	UNP P07986
H	32	GLN	ASP	conflict	UNP P07986
H	64	GLN	ARG	conflict	UNP P07986
H	86	TRP	HIS	conflict	UNP P07986

- Molecule 2 is ACETATE ION (three-letter code: ACT) (formula: C₂H₃O₂).



Mol	Chain	Residues	Atoms	ZeroOcc	AltConf
2	A	1	Total C O 4 2 2	0	0
2	C	1	Total C O 4 2 2	0	0
2	C	1	Total C O 4 2 2	0	0
2	C	1	Total C O 4 2 2	0	0
2	C	1	Total C O 4 2 2	0	0
2	D	1	Total C O 4 2 2	0	0
2	G	1	Total C O 4 2 2	0	0
2	H	1	Total C O 4 2 2	0	0

- Molecule 3 is 1,2-ETHANEDIOL (three-letter code: EDO) (formula: C₂H₆O₂).



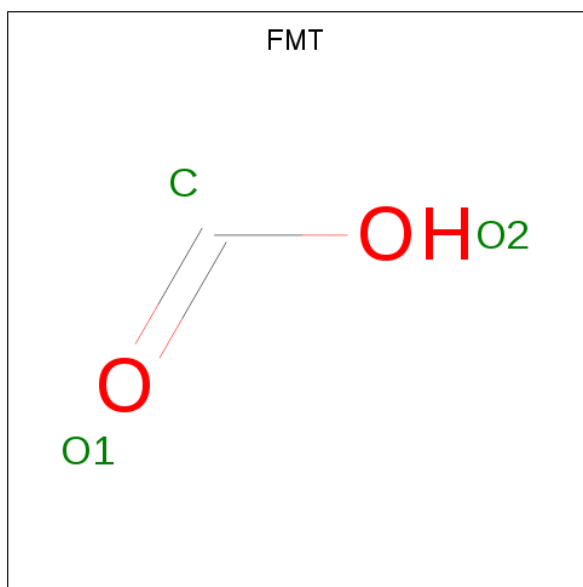
Mol	Chain	Residues	Atoms	ZeroOcc	AltConf
3	A	1	Total C O 4 2 2	0	0
3	B	1	Total C O 4 2 2	0	0
3	B	1	Total C O 4 2 2	0	0
3	B	1	Total C O 4 2 2	0	0
3	C	1	Total C O 4 2 2	0	0
3	C	1	Total C O 4 2 2	0	0
3	C	1	Total C O 4 2 2	0	0
3	C	1	Total C O 4 2 2	0	0
3	C	1	Total C O 4 2 2	0	0
3	D	1	Total C O 4 2 2	0	0
3	D	1	Total C O 4 2 2	0	0
3	E	1	Total C O 4 2 2	0	0
3	E	1	Total C O 4 2 2	0	0
3	F	1	Total C O 4 2 2	0	0

Continued on next page...

Continued from previous page...

Mol	Chain	Residues	Atoms	ZeroOcc	AltConf
3	G	1	Total C O 4 2 2	0	0
3	G	1	Total C O 4 2 2	0	0

- Molecule 4 is FORMIC ACID (three-letter code: FMT) (formula: CH₂O₂).



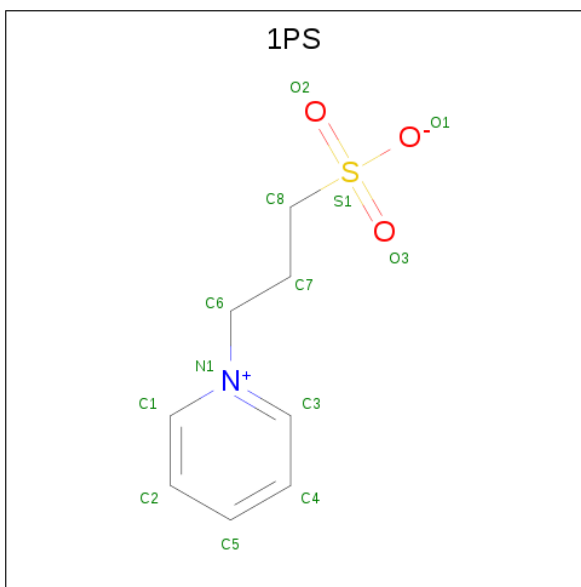
Mol	Chain	Residues	Atoms	ZeroOcc	AltConf
4	A	1	Total C O 3 1 2	0	0
4	A	1	Total C O 3 1 2	0	0
4	B	1	Total C O 3 1 2	0	0
4	B	1	Total C O 3 1 2	0	0
4	C	1	Total C O 3 1 2	0	0
4	C	1	Total C O 3 1 2	0	0
4	C	1	Total C O 3 1 2	0	0
4	C	1	Total C O 3 1 2	0	0
4	D	1	Total C O 3 1 2	0	0

Continued on next page...

Continued from previous page...

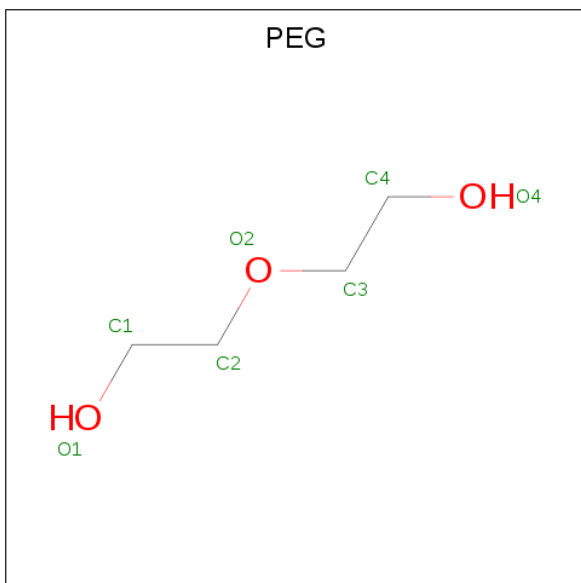
Mol	Chain	Residues	Atoms			ZeroOcc	AltConf
			Total	C	O		
4	D	1	3	1	2	0	0
4	D	1	3	1	2	0	0
4	E	1	3	1	2	0	0
4	E	1	3	1	2	0	0
4	E	1	3	1	2	0	0
4	F	1	3	1	2	0	0
4	F	1	3	1	2	0	0
4	F	1	3	1	2	0	0
4	F	1	3	1	2	0	0
4	F	1	3	1	2	0	0
4	G	1	3	1	2	0	0
4	G	1	3	1	2	0	0
4	G	1	3	1	2	0	0
4	G	1	3	1	2	0	0
4	H	1	3	1	2	0	0
4	H	1	3	1	2	0	0

- Molecule 5 is 3-PYRIDINIUM-1-YLPROPANE-1-SULFONATE (three-letter code: 1PS) (formula: C₈H₁₁NO₃S).



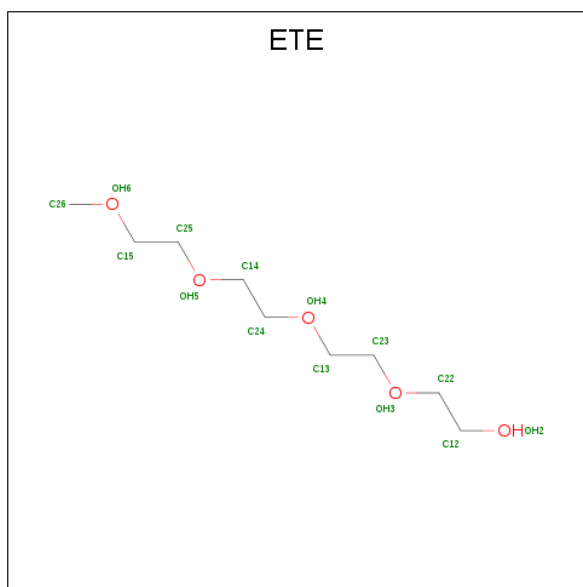
Mol	Chain	Residues	Atoms					ZeroOcc	AltConf
			Total	C	N	O	S		
5	B	1	Total	C	N	O	S	0	0
			13	8	1	3	1		
5	D	1	Total	C	N	O	S	0	0
			13	8	1	3	1		
5	E	1	Total	C	N	O	S	0	0
			13	8	1	3	1		
5	F	1	Total	C	N	O	S	0	0
			13	8	1	3	1		

- Molecule 6 is DI(HYDROXYETHYL)ETHER (three-letter code: PEG) (formula: C₄H₁₀O₃).



Mol	Chain	Residues	Atoms			ZeroOcc	AltConf
6	D	1	Total	C	O	0	0
			7	4	3		
6	H	1	Total	C	O	0	0
			7	4	3		

- Molecule 7 is 2-{2-[2-2-(METHOXY-ETHOXY)-ETHOXY]-ETHOXY}-ETHANOL (three-letter code: ETE) (formula: C₉H₂₀O₅).



Mol	Chain	Residues	Atoms			ZeroOcc	AltConf
7	D	1	Total	C	O	0	0
			14	9	5		
7	E	1	Total	C	O	0	0
			14	9	5		

- Molecule 8 is GLYCEROL (three-letter code: GOL) (formula: C₃H₈O₃).



Mol	Chain	Residues	Atoms			ZeroOcc	AltConf
8	F	1	Total	C	O	0	0
			6	3	3		

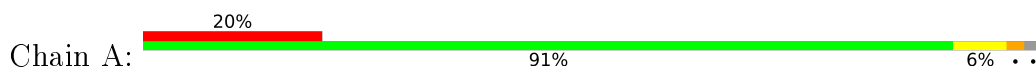
- Molecule 9 is water.

Mol	Chain	Residues	Atoms		ZeroOcc	AltConf
9	A	16	Total	O	0	0
			16	16		
9	B	28	Total	O	0	0
			28	28		
9	C	42	Total	O	0	0
			42	42		
9	D	41	Total	O	0	0
			41	41		
9	E	23	Total	O	0	0
			23	23		
9	F	38	Total	O	0	0
			38	38		
9	G	17	Total	O	0	0
			17	17		
9	H	8	Total	O	0	0
			8	8		

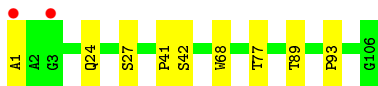
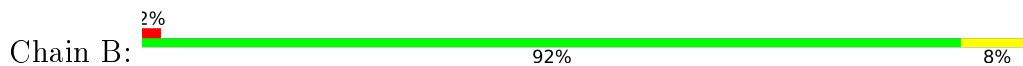
3 Residue-property plots [i](#)

These plots are drawn for all protein, RNA, DNA and oligosaccharide chains in the entry. The first graphic for a chain summarises the proportions of the various outlier classes displayed in the second graphic. The second graphic shows the sequence view annotated by issues in geometry and electron density. Residues are color-coded according to the number of geometric quality criteria for which they contain at least one outlier: green = 0, yellow = 1, orange = 2 and red = 3 or more. A red dot above a residue indicates a poor fit to the electron density ($RSRZ > 2$). Stretches of 2 or more consecutive residues without any outlier are shown as a green connector. Residues present in the sample, but not in the model, are shown in grey.

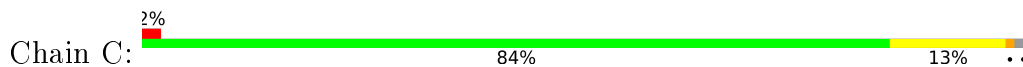
- Molecule 1: Exoglucanase/xylanase



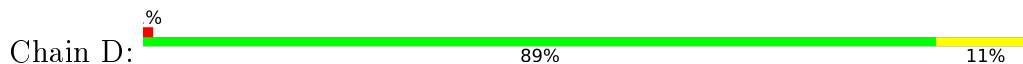
- Molecule 1: Exoglucanase/xylanase



- Molecule 1: Exoglucanase/xylanase



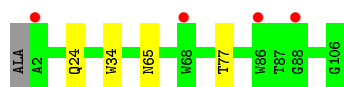
- Molecule 1: Exoglucanase/xylanase



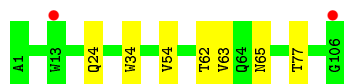
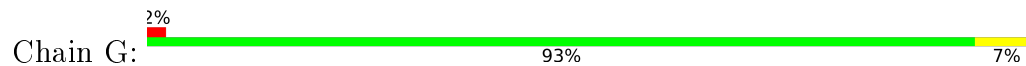
- Molecule 1: Exoglucanase/xylanase



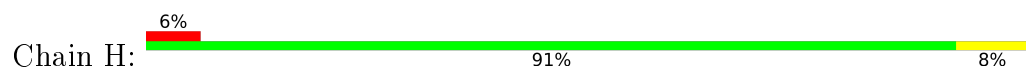
- Molecule 1: Exoglucanase/xylanase



- Molecule 1: Exoglucanase/xylanase



- Molecule 1: Exoglucanase/xylanase



4 Data and refinement statistics

Property	Value	Source
Space group	P 32 2 1	Depositor
Cell constants a, b, c, α , β , γ	137.38Å 137.38Å 148.55Å 90.00° 90.00° 120.00°	Depositor
Resolution (Å)	63.01 – 2.20 63.00 – 2.20	Depositor EDS
% Data completeness (in resolution range)	99.9 (63.01-2.20) 99.9 (63.00-2.20)	Depositor EDS
R_{merge}	0.09	Depositor
R_{sym}	(Not available)	Depositor
$\langle I/\sigma(I) \rangle$ ¹	2.67 (at 2.20Å)	Xtrriage
Refinement program	PHENIX 1.12_2829	Depositor
R, R_{free}	0.177 , 0.202 0.176 , 0.202	Depositor DCC
R_{free} test set	4109 reflections (4.99%)	wwPDB-VP
Wilson B-factor (Å ²)	45.3	Xtrriage
Anisotropy	0.425	Xtrriage
Bulk solvent k_{sol} (e/Å ³), B_{sol} (Å ²)	0.34 , 67.0	EDS
L-test for twinning ²	$\langle L \rangle = 0.50$, $\langle L^2 \rangle = 0.33$	Xtrriage
Estimated twinning fraction	0.020 for -h,-k,l	Xtrriage
F_o, F_c correlation	0.97	EDS
Total number of atoms	6683	wwPDB-VP
Average B, all atoms (Å ²)	65.0	wwPDB-VP

Xtrriage's analysis on translational NCS is as follows: *The largest off-origin peak in the Patterson function is 2.90% of the height of the origin peak. No significant pseudotranslation is detected.*

¹ Intensities estimated from amplitudes.

² Theoretical values of $\langle |L| \rangle$, $\langle L^2 \rangle$ for acentric reflections are 0.5, 0.333 respectively for untwinned datasets, and 0.375, 0.2 for perfectly twinned datasets.

5 Model quality [i](#)

5.1 Standard geometry [i](#)

Bond lengths and bond angles in the following residue types are not validated in this section: GOL, FMT, ACT, EDO, ETE, 1PS, PEG

The Z score for a bond length (or angle) is the number of standard deviations the observed value is removed from the expected value. A bond length (or angle) with $|Z| > 5$ is considered an outlier worth inspection. RMSZ is the root-mean-square of all Z scores of the bond lengths (or angles).

Mol	Chain	Bond lengths		Bond angles	
		RMSZ	# Z >5	RMSZ	# Z >5
1	A	0.41	0/811	0.57	0/1121
1	B	0.49	0/822	0.63	0/1135
1	C	0.59	0/788	0.62	0/1088
1	D	0.53	0/791	0.65	0/1092
1	E	0.43	0/798	0.60	0/1103
1	F	0.51	0/802	0.63	0/1108
1	G	0.43	0/794	0.62	0/1096
1	H	0.41	0/793	0.57	0/1095
All	All	0.48	0/6399	0.61	0/8838

There are no bond length outliers.

There are no bond angle outliers.

There are no chirality outliers.

There are no planarity outliers.

5.2 Too-close contacts [i](#)

In the following table, the Non-H and H(model) columns list the number of non-hydrogen atoms and hydrogen atoms in the chain respectively. The H(added) column lists the number of hydrogen atoms added and optimized by MolProbity. The Clashes column lists the number of clashes within the asymmetric unit, whereas Symm-Clashes lists symmetry-related clashes.

Mol	Chain	Non-H	H(model)	H(added)	Clashes	Symm-Clashes
1	A	786	0	717	5	0
1	B	795	0	734	5	0
1	C	759	0	702	9	0
1	D	768	0	706	6	0
1	E	773	0	707	2	0

Continued on next page...

Continued from previous page...

Mol	Chain	Non-H	H(model)	H(added)	Clashes	Symm-Clashes
1	F	777	0	708	2	0
1	G	771	0	710	3	0
1	H	770	0	708	5	0
2	A	4	0	3	0	0
2	C	16	0	12	0	0
2	D	4	0	3	0	0
2	G	4	0	3	0	0
2	H	4	0	3	0	0
3	A	4	0	6	0	0
3	B	12	0	18	2	0
3	C	20	0	30	0	0
3	D	8	0	12	0	0
3	E	8	0	12	0	0
3	F	4	0	6	0	0
3	G	8	0	12	0	0
4	A	6	0	2	0	0
4	B	6	0	2	0	0
4	C	12	0	4	1	0
4	D	9	0	3	0	0
4	E	9	0	3	0	0
4	F	15	0	5	0	0
4	G	12	0	4	0	0
4	H	6	0	2	0	0
5	B	13	0	11	0	0
5	D	13	0	11	2	0
5	E	13	0	11	0	0
5	F	13	0	11	1	0
6	D	7	0	10	0	0
6	H	7	0	10	0	0
7	D	14	0	20	1	0
7	E	14	0	20	1	0
8	F	6	0	8	0	0
9	A	16	0	0	0	0
9	B	28	0	0	0	0
9	C	42	0	0	0	0
9	D	41	0	0	0	0
9	E	23	0	0	0	0
9	F	38	0	0	0	0
9	G	17	0	0	0	0
9	H	8	0	0	0	0
All	All	6683	0	5949	39	0

The all-atom clashscore is defined as the number of clashes found per 1000 atoms (including

hydrogen atoms). The all-atom clashscore for this structure is 3.

All (39) close contacts within the same asymmetric unit are listed below, sorted by their clash magnitude.

Atom-1	Atom-2	Interatomic distance (Å)	Clash overlap (Å)
1:H:42:SER:HB3	1:H:89:THR:HG23	1.71	0.70
1:D:47:THR:HG22	1:D:48:GLN:HG3	1.81	0.62
1:G:24[A]:GLN:HG2	1:G:77:THR:HG22	1.84	0.59
1:C:34:TRP:CE2	1:C:65:ASN:HB3	2.38	0.58
1:C:41:PRO:HG2	1:C:91:ALA:HB3	1.85	0.58
1:B:24[A]:GLN:HG2	1:B:77:THR:HG22	1.87	0.57
3:B:203:EDO:H12	5:D:201:1PS:H1	1.87	0.56
1:H:2:ALA:HA	1:H:27:SER:HB2	1.88	0.55
1:B:41:PRO:HD3	1:B:93[B]:PRO:HA	1.89	0.54
1:D:24:GLN:HG3	1:D:77:THR:HG22	1.91	0.53
3:B:203:EDO:H21	5:D:201:1PS:H72	1.91	0.52
1:B:1:ALA:O	1:B:27:SER:HB2	2.10	0.51
1:C:24:GLN:HG2	1:C:77:THR:HG22	1.91	0.51
1:E:34:TRP:CE2	1:E:65:ASN:HB3	2.47	0.49
1:A:34:TRP:CE2	1:A:65:ASN:HB3	2.48	0.49
1:D:54:VAL:HG22	1:D:63:VAL:HG22	1.94	0.48
1:F:34:TRP:CE2	1:F:65:ASN:HB3	2.48	0.48
1:B:24[B]:GLN:HG3	1:B:77:THR:HG22	1.96	0.48
1:H:37:THR:HG22	1:H:62:THR:HG22	1.96	0.47
1:F:24:GLN:HG2	1:F:77:THR:HG22	1.95	0.47
1:D:1:ALA:O	1:D:27:SER:HB2	2.15	0.47
1:C:31:VAL:HG22	1:C:72:ILE:HB	1.96	0.47
1:G:54:VAL:HG22	1:G:63:VAL:HG22	1.96	0.47
1:A:104:THR:OG1	1:A:105:VAL:N	2.48	0.47
1:G:34:TRP:CE2	1:G:65:ASN:HB3	2.50	0.46
1:A:46[A]:VAL:HG12	1:A:56:GLN:OE1	2.16	0.45
1:C:37:THR:HG22	1:C:62:THR:HG22	1.99	0.45
4:C:211:FMT:O1	5:F:201:1PS:H2	2.16	0.45
1:A:5:GLN:HB2	1:A:104:THR:HG23	1.99	0.44
1:B:68:TRP:CG	1:C:14:ASN:HB3	2.52	0.44
1:A:54:VAL:O	1:H:11:ASN:HA	2.20	0.42
1:D:34:TRP:CE2	1:D:65:ASN:HB3	2.54	0.42
1:C:63:VAL:HG11	1:C:80:PHE:CZ	2.54	0.42
1:C:63:VAL:HG11	1:C:80:PHE:CE2	2.55	0.42
1:C:7:LEU:HB2	1:C:22:THR:HB	2.01	0.41
1:H:34:TRP:CE2	1:H:65:ASN:HB3	2.55	0.41
1:E:7:LEU:HB2	1:E:22:THR:HB	2.02	0.41
1:D:32:GLN:O	7:D:209:ETE:H152	2.21	0.41

Continued on next page...

Continued from previous page...

Atom-1	Atom-2	Interatomic distance (Å)	Clash overlap (Å)
7:E:207:ETE:H152	7:E:207:ETE:H141	1.78	0.41

There are no symmetry-related clashes.

5.3 Torsion angles [i](#)

5.3.1 Protein backbone [i](#)

In the following table, the Percentiles column shows the percent Ramachandran outliers of the chain as a percentile score with respect to all X-ray entries followed by that with respect to entries of similar resolution.

The Analysed column shows the number of residues for which the backbone conformation was analysed, and the total number of residues.

Mol	Chain	Analysed	Favoured	Allowed	Outliers	Percentiles	
1	A	106/106 (100%)	102 (96%)	4 (4%)	0	100	100
1	B	109/106 (103%)	101 (93%)	8 (7%)	0	100	100
1	C	104/106 (98%)	101 (97%)	3 (3%)	0	100	100
1	D	105/106 (99%)	100 (95%)	5 (5%)	0	100	100
1	E	104/106 (98%)	100 (96%)	4 (4%)	0	100	100
1	F	105/106 (99%)	102 (97%)	3 (3%)	0	100	100
1	G	105/106 (99%)	100 (95%)	5 (5%)	0	100	100
1	H	105/106 (99%)	101 (96%)	4 (4%)	0	100	100
All	All	843/848 (99%)	807 (96%)	36 (4%)	0	100	100

There are no Ramachandran outliers to report.

5.3.2 Protein sidechains [i](#)

In the following table, the Percentiles column shows the percent sidechain outliers of the chain as a percentile score with respect to all X-ray entries followed by that with respect to entries of similar resolution.

The Analysed column shows the number of residues for which the sidechain conformation was analysed, and the total number of residues.

Mol	Chain	Analysed	Rotameric	Outliers	Percentiles	
1	A	84/80 (105%)	82 (98%)	2 (2%)	49	62
1	B	84/80 (105%)	82 (98%)	2 (2%)	49	62
1	C	82/80 (102%)	81 (99%)	1 (1%)	71	83
1	D	81/80 (101%)	80 (99%)	1 (1%)	71	83
1	E	82/80 (102%)	80 (98%)	2 (2%)	49	62
1	F	82/80 (102%)	82 (100%)	0	100	100
1	G	81/80 (101%)	80 (99%)	1 (1%)	71	83
1	H	81/80 (101%)	79 (98%)	2 (2%)	47	60
All	All	657/640 (103%)	646 (98%)	11 (2%)	60	74

All (11) residues with a non-rotameric sidechain are listed below:

Mol	Chain	Res	Type
1	A	65	ASN
1	A	104	THR
1	B	42	SER
1	B	89	THR
1	C	31	VAL
1	D	42	SER
1	E	57	SER
1	E	71	SER
1	G	62	THR
1	H	42	SER
1	H	104	THR

Sometimes sidechains can be flipped to improve hydrogen bonding and reduce clashes. There are no such sidechains identified.

5.3.3 RNA [i](#)

There are no RNA molecules in this entry.

5.4 Non-standard residues in protein, DNA, RNA chains [i](#)

There are no non-standard protein/DNA/RNA residues in this entry.

5.5 Carbohydrates [i](#)

There are no monosaccharides in this entry.

5.6 Ligand geometry [i](#)

58 ligands are modelled in this entry.

In the following table, the Counts columns list the number of bonds (or angles) for which Mogul statistics could be retrieved, the number of bonds (or angles) that are observed in the model and the number of bonds (or angles) that are defined in the Chemical Component Dictionary. The Link column lists molecule types, if any, to which the group is linked. The Z score for a bond length (or angle) is the number of standard deviations the observed value is removed from the expected value. A bond length (or angle) with $|Z| > 2$ is considered an outlier worth inspection. RMSZ is the root-mean-square of all Z scores of the bond lengths (or angles).

Mol	Type	Chain	Res	Link	Bond lengths			Bond angles		
					Counts	RMSZ	# Z > 2	Counts	RMSZ	# Z > 2
3	EDO	C	206	-	3,3,3	0.48	0	2,2,2	0.29	0
4	FMT	E	204	-	0,2,2	0.00	-	0,1,1	0.00	-
4	FMT	A	204	-	0,2,2	0.00	-	0,1,1	0.00	-
2	ACT	C	203	-	1,3,3	4.36	1 (100%)	0,3,3	0.00	-
7	ETE	E	207	-	13,13,13	0.53	0	12,12,12	0.39	0
3	EDO	D	203	-	3,3,3	0.43	0	2,2,2	0.51	0
4	FMT	E	206	-	0,2,2	0.00	-	0,1,1	0.00	-
4	FMT	C	211	-	0,2,2	0.00	-	0,1,1	0.00	-
3	EDO	B	203	-	3,3,3	0.49	0	2,2,2	0.20	0
5	1PS	F	201	-	13,13,13	1.36	2 (15%)	17,17,17	2.33	4 (23%)
5	1PS	E	201	-	13,13,13	1.34	3 (23%)	17,17,17	2.00	3 (17%)
6	PEG	D	208	-	6,6,6	0.52	0	5,5,5	0.56	0
4	FMT	C	212	-	0,2,2	0.00	-	0,1,1	0.00	-
2	ACT	C	201	-	1,3,3	2.87	1 (100%)	0,3,3	0.00	-
4	FMT	E	205	-	0,2,2	0.00	-	0,1,1	0.00	-
4	FMT	D	206	-	0,2,2	0.00	-	0,1,1	0.00	-
2	ACT	C	202	-	1,3,3	4.50	1 (100%)	0,3,3	0.00	-
4	FMT	A	203	-	0,2,2	0.00	-	0,1,1	0.00	-
3	EDO	D	204	-	3,3,3	0.47	0	2,2,2	0.43	0
3	EDO	E	203	-	3,3,3	0.53	0	2,2,2	0.15	0
4	FMT	F	204	-	0,2,2	0.00	-	0,1,1	0.00	-
4	FMT	H	203	-	0,2,2	0.00	-	0,1,1	0.00	-
2	ACT	H	201	-	1,3,3	3.88	1 (100%)	0,3,3	0.00	-
4	FMT	D	205	-	0,2,2	0.00	-	0,1,1	0.00	-
5	1PS	D	201	-	13,13,13	1.54	3 (23%)	17,17,17	2.55	5 (29%)
4	FMT	F	207	-	0,2,2	0.00	-	0,1,1	0.00	-

Mol	Type	Chain	Res	Link	Bond lengths			Bond angles		
					Counts	RMSZ	# Z > 2	Counts	RMSZ	# Z > 2
2	ACT	G	201	-	1,3,3	4.03	1 (100%)	0,3,3	0.00	-
4	FMT	B	206	-	0,2,2	0.00	-	0,1,1	0.00	-
3	EDO	A	202	-	3,3,3	0.49	0	2,2,2	0.58	0
3	EDO	G	203	-	3,3,3	0.45	0	2,2,2	0.14	0
3	EDO	C	209	-	3,3,3	0.46	0	2,2,2	0.84	0
4	FMT	F	205	-	0,2,2	0.00	-	0,1,1	0.00	-
4	FMT	F	206	-	0,2,2	0.00	-	0,1,1	0.00	-
4	FMT	C	213	-	0,2,2	0.00	-	0,1,1	0.00	-
3	EDO	B	204	-	3,3,3	0.43	0	2,2,2	0.44	0
5	1PS	B	201	-	13,13,13	1.14	2 (15%)	17,17,17	2.78	6 (35%)
4	FMT	G	206	-	0,2,2	0.00	-	0,1,1	0.00	-
3	EDO	C	205	-	3,3,3	0.52	0	2,2,2	0.39	0
3	EDO	C	208	-	3,3,3	0.47	0	2,2,2	0.22	0
4	FMT	G	205	-	0,2,2	0.00	-	0,1,1	0.00	-
3	EDO	B	202	-	3,3,3	0.49	0	2,2,2	0.47	0
3	EDO	G	202	-	3,3,3	0.43	0	2,2,2	0.27	0
2	ACT	A	201	-	1,3,3	4.04	1 (100%)	0,3,3	0.00	-
3	EDO	C	207	-	3,3,3	0.45	0	2,2,2	0.41	0
4	FMT	B	205	-	0,2,2	0.00	-	0,1,1	0.00	-
4	FMT	D	207	-	0,2,2	0.00	-	0,1,1	0.00	-
4	FMT	C	210	-	0,2,2	0.00	-	0,1,1	0.00	-
4	FMT	G	204	-	0,2,2	0.00	-	0,1,1	0.00	-
4	FMT	H	202	-	0,2,2	0.00	-	0,1,1	0.00	-
3	EDO	F	202	-	3,3,3	0.50	0	2,2,2	0.49	0
6	PEG	H	204	-	6,6,6	0.47	0	5,5,5	0.36	0
4	FMT	F	203	-	0,2,2	0.00	-	0,1,1	0.00	-
4	FMT	G	207	-	0,2,2	0.00	-	0,1,1	0.00	-
8	GOL	F	208	-	5,5,5	0.67	0	5,5,5	1.14	0
2	ACT	D	202	-	1,3,3	4.20	1 (100%)	0,3,3	0.00	-
2	ACT	C	204	-	1,3,3	4.42	1 (100%)	0,3,3	0.00	-
7	ETE	D	209	-	13,13,13	0.57	0	12,12,12	0.54	0
3	EDO	E	202	-	3,3,3	0.43	0	2,2,2	0.39	0

In the following table, the Chirals column lists the number of chiral outliers, the number of chiral centers analysed, the number of these observed in the model and the number defined in the Chemical Component Dictionary. Similar counts are reported in the Torsion and Rings columns. '-' means no outliers of that kind were identified.

Mol	Type	Chain	Res	Link	Chirals	Torsions	Rings
3	EDO	C	206	-	-	1/1/1/1	-
7	ETE	E	207	-	-	9/11/11/11	-

Continued on next page...

Continued from previous page...

Mol	Type	Chain	Res	Link	Chirals	Torsions	Rings
3	EDO	D	203	-	-	1/1/1/1	-
3	EDO	B	203	-	-	0/1/1/1	-
5	1PS	F	201	-	-	3/7/7/7	0/1/1/1
5	1PS	E	201	-	-	1/7/7/7	0/1/1/1
6	PEG	D	208	-	-	4/4/4/4	-
7	ETE	D	209	-	-	7/11/11/11	-
3	EDO	D	204	-	-	1/1/1/1	-
5	1PS	B	201	-	-	0/7/7/7	0/1/1/1
5	1PS	D	201	-	-	0/7/7/7	0/1/1/1
3	EDO	A	202	-	-	0/1/1/1	-
3	EDO	G	203	-	-	1/1/1/1	-
3	EDO	C	209	-	-	1/1/1/1	-
3	EDO	B	204	-	-	0/1/1/1	-
3	EDO	C	205	-	-	0/1/1/1	-
3	EDO	C	208	-	-	1/1/1/1	-
3	EDO	B	202	-	-	0/1/1/1	-
3	EDO	G	202	-	-	1/1/1/1	-
3	EDO	C	207	-	-	1/1/1/1	-
3	EDO	E	203	-	-	0/1/1/1	-
6	PEG	H	204	-	-	2/4/4/4	-
8	GOL	F	208	-	-	4/4/4/4	-
3	EDO	F	202	-	-	1/1/1/1	-
3	EDO	E	202	-	-	0/1/1/1	-

All (18) bond length outliers are listed below:

Mol	Chain	Res	Type	Atoms	Z	Observed(Å)	Ideal(Å)
2	C	202	ACT	CH3-C	4.50	1.54	1.48
2	C	204	ACT	CH3-C	4.42	1.54	1.48
2	C	203	ACT	CH3-C	4.36	1.54	1.48
2	D	202	ACT	CH3-C	4.20	1.54	1.48
2	A	201	ACT	CH3-C	4.04	1.53	1.48
2	G	201	ACT	CH3-C	4.03	1.53	1.48
2	H	201	ACT	CH3-C	3.88	1.53	1.48
5	D	201	1PS	C8-S1	3.29	1.82	1.77
5	F	201	1PS	C8-S1	3.17	1.82	1.77
5	E	201	1PS	C8-S1	2.93	1.81	1.77
2	C	201	ACT	CH3-C	2.87	1.52	1.48
5	D	201	1PS	O2-S1	2.79	1.53	1.45
5	B	201	1PS	O2-S1	2.41	1.52	1.45
5	E	201	1PS	O3-S1	2.38	1.52	1.45

Continued on next page...

Continued from previous page...

Mol	Chain	Res	Type	Atoms	Z	Observed(Å)	Ideal(Å)
5	D	201	1PS	O3-S1	2.18	1.51	1.45
5	B	201	1PS	O3-S1	2.17	1.51	1.45
5	F	201	1PS	O3-S1	2.12	1.51	1.45
5	E	201	1PS	O2-S1	2.09	1.51	1.45

All (18) bond angle outliers are listed below:

Mol	Chain	Res	Type	Atoms	Z	Observed(°)	Ideal(°)
5	B	201	1PS	O2-S1-C8	7.12	115.49	106.92
5	F	201	1PS	O3-S1-C8	6.26	114.45	106.92
5	D	201	1PS	O2-S1-C8	6.00	114.14	106.92
5	E	201	1PS	C7-C8-S1	-5.73	104.47	113.25
5	D	201	1PS	O3-S1-O2	-4.87	97.09	113.95
5	D	201	1PS	C7-C8-S1	-4.72	106.02	113.25
5	B	201	1PS	O3-S1-C8	4.55	112.39	106.92
5	F	201	1PS	O1-S1-O3	-4.49	100.29	111.27
5	B	201	1PS	C7-C8-S1	-4.19	106.83	113.25
5	D	201	1PS	O1-S1-O3	3.82	120.60	111.27
5	F	201	1PS	O2-S1-C8	3.74	111.42	106.92
5	E	201	1PS	O2-S1-C8	3.55	111.19	106.92
5	F	201	1PS	C7-C8-S1	-3.42	108.00	113.25
5	E	201	1PS	O1-S1-C8	3.41	111.28	105.77
5	B	201	1PS	O1-S1-O2	-3.37	103.04	111.27
5	B	201	1PS	O1-S1-O3	3.26	119.25	111.27
5	B	201	1PS	O3-S1-O2	-3.13	103.12	113.95
5	D	201	1PS	C6-C7-C8	-2.23	105.45	111.97

There are no chirality outliers.

All (39) torsion outliers are listed below:

Mol	Chain	Res	Type	Atoms
5	F	201	1PS	N1-C6-C7-C8
5	E	201	1PS	N1-C6-C7-C8
8	F	208	GOL	O1-C1-C2-O2
8	F	208	GOL	O1-C1-C2-C3
7	E	207	ETE	C15-C25-OH5-C14
7	E	207	ETE	OH6-C15-C25-OH5
7	D	209	ETE	OH5-C14-C24-OH4
3	D	204	EDO	O1-C1-C2-O2
7	E	207	ETE	OH2-C12-C22-OH3
5	F	201	1PS	C7-C8-S1-O1
8	F	208	GOL	C1-C2-C3-O3

Continued on next page...

Continued from previous page...

Mol	Chain	Res	Type	Atoms
3	G	203	EDO	O1-C1-C2-O2
6	D	208	PEG	O1-C1-C2-O2
6	H	204	PEG	O1-C1-C2-O2
5	F	201	1PS	C7-C8-S1-O2
7	E	207	ETE	C23-C13-OH4-C24
7	E	207	ETE	OH5-C14-C24-OH4
6	D	208	PEG	C1-C2-O2-C3
8	F	208	GOL	O2-C2-C3-O3
7	D	209	ETE	C13-C23-OH3-C22
7	D	209	ETE	OH2-C12-C22-OH3
7	D	209	ETE	C24-C14-OH5-C25
7	D	209	ETE	OH4-C13-C23-OH3
3	C	209	EDO	O1-C1-C2-O2
7	E	207	ETE	C13-C23-OH3-C22
7	D	209	ETE	C12-C22-OH3-C23
3	C	207	EDO	O1-C1-C2-O2
7	E	207	ETE	OH4-C13-C23-OH3
3	C	208	EDO	O1-C1-C2-O2
3	F	202	EDO	O1-C1-C2-O2
7	E	207	ETE	C14-C24-OH4-C13
6	H	204	PEG	C1-C2-O2-C3
7	E	207	ETE	C25-C15-OH6-C26
3	C	206	EDO	O1-C1-C2-O2
3	D	203	EDO	O1-C1-C2-O2
3	G	202	EDO	O1-C1-C2-O2
7	D	209	ETE	OH6-C15-C25-OH5
6	D	208	PEG	C4-C3-O2-C2
6	D	208	PEG	O2-C3-C4-O4

There are no ring outliers.

6 monomers are involved in 5 short contacts:

Mol	Chain	Res	Type	Clashes	Symm-Clashes
7	E	207	ETE	1	0
4	C	211	FMT	1	0
3	B	203	EDO	2	0
5	F	201	1PS	1	0
5	D	201	1PS	2	0
7	D	209	ETE	1	0

5.7 Other polymers [i](#)

There are no such residues in this entry.

5.8 Polymer linkage issues [i](#)

There are no chain breaks in this entry.

6 Fit of model and data

6.1 Protein, DNA and RNA chains

In the following table, the column labelled ‘#RSRZ> 2’ contains the number (and percentage) of RSRZ outliers, followed by percent RSRZ outliers for the chain as percentile scores relative to all X-ray entries and entries of similar resolution. The OWAB column contains the minimum, median, 95th percentile and maximum values of the occupancy-weighted average B-factor per residue. The column labelled ‘Q< 0.9’ lists the number of (and percentage) of residues with an average occupancy less than 0.9.

Mol	Chain	Analysed	<RSRZ>	#RSRZ>2	OWAB(Å ²)	Q<0.9
1	A	104/106 (98%)	0.76	21 (20%) 1 1	45, 77, 122, 136	0
1	B	106/106 (100%)	0.01	2 (1%) 66 65	46, 65, 84, 123	0
1	C	104/106 (98%)	0.26	2 (1%) 66 65	39, 51, 89, 102	0
1	D	106/106 (100%)	-0.20	1 (0%) 84 83	42, 58, 74, 121	0
1	E	104/106 (98%)	0.17	4 (3%) 40 38	52, 66, 85, 95	0
1	F	105/106 (99%)	0.56	4 (3%) 40 38	38, 53, 86, 110	0
1	G	106/106 (100%)	0.02	2 (1%) 66 65	42, 66, 85, 122	0
1	H	106/106 (100%)	0.31	6 (5%) 23 22	43, 73, 103, 119	0
All	All	841/848 (99%)	0.23	42 (4%) 28 27	38, 64, 99, 136	0

All (42) RSRZ outliers are listed below:

Mol	Chain	Res	Type	RSRZ
1	A	76	GLY	5.8
1	A	31	VAL	4.8
1	A	30	PRO	4.8
1	H	106	GLY	4.2
1	A	72	ILE	4.0
1	A	34	TRP	3.9
1	A	32	GLN	3.9
1	A	33	GLY	3.5
1	A	73	PRO	3.4
1	D	1	ALA	3.4
1	A	75	GLY	3.3
1	H	86	TRP	3.2
1	A	71	SER	3.2
1	A	28[A]	SER	2.9
1	A	29	ALA	2.9
1	A	70	GLY	2.8

Continued on next page...

Continued from previous page...

Mol	Chain	Res	Type	RSRZ
1	A	98	LEU	2.8
1	C	60	ALA	2.7
1	F	2	ALA	2.7
1	G	106	GLY	2.7
1	B	1	ALA	2.6
1	B	3	GLY	2.6
1	E	68[A]	TRP	2.5
1	E	26	THR	2.5
1	C	61	VAL	2.4
1	F	86	TRP	2.3
1	G	13	TRP	2.3
1	A	26	THR	2.3
1	F	68[A]	TRP	2.3
1	A	74	ALA	2.3
1	A	25	ASN	2.3
1	H	94	THR	2.3
1	H	96	PHE	2.3
1	A	100	GLY	2.2
1	E	74	ALA	2.2
1	H	95	ALA	2.2
1	F	88	GLY	2.2
1	A	66	ALA	2.1
1	E	73	PRO	2.1
1	A	99	ASN	2.0
1	A	3	GLY	2.0
1	H	92	ALA	2.0

6.2 Non-standard residues in protein, DNA, RNA chains [\(i\)](#)

There are no non-standard protein/DNA/RNA residues in this entry.

6.3 Carbohydrates [\(i\)](#)

There are no monosaccharides in this entry.

6.4 Ligands [\(i\)](#)

In the following table, the Atoms column lists the number of modelled atoms in the group and the number defined in the chemical component dictionary. The B-factors column lists the minimum, median, 95th percentile and maximum values of B factors of atoms in the group. The column labelled 'Q< 0.9' lists the number of atoms with occupancy less than 0.9.

Mol	Type	Chain	Res	Atoms	RSCC	RSR	B-factors(\AA^2)	Q<0.9
4	FMT	C	213	3/3	0.71	0.31	62,62,77,77	0
3	EDO	B	203	4/4	0.75	0.22	61,63,71,74	0
4	FMT	H	203	3/3	0.77	0.41	91,91,96,97	0
3	EDO	C	206	4/4	0.77	0.28	76,78,81,86	0
4	FMT	B	206	3/3	0.80	0.18	83,83,84,84	0
7	ETE	D	209	14/14	0.80	0.24	71,95,104,105	0
7	ETE	E	207	14/14	0.81	0.16	75,88,96,103	0
4	FMT	C	212	3/3	0.84	0.17	82,82,85,87	0
2	ACT	C	203	4/4	0.84	0.21	81,84,85,85	0
3	EDO	C	207	4/4	0.84	0.16	71,80,88,94	0
2	ACT	A	201	4/4	0.85	0.21	88,88,88,89	0
8	GOL	F	208	6/6	0.85	0.25	92,93,97,98	0
4	FMT	G	205	3/3	0.86	0.22	78,78,85,85	0
4	FMT	E	206	3/3	0.86	0.25	84,84,84,86	0
6	PEG	D	208	7/7	0.86	0.17	65,72,80,81	0
3	EDO	B	204	4/4	0.86	0.16	78,79,82,87	0
6	PEG	H	204	7/7	0.87	0.22	59,62,81,84	0
4	FMT	B	205	3/3	0.88	0.19	74,74,76,77	0
2	ACT	C	202	4/4	0.88	0.23	71,73,73,74	0
4	FMT	F	207	3/3	0.88	0.14	65,65,73,75	0
2	ACT	D	202	4/4	0.88	0.21	79,83,85,85	0
3	EDO	E	203	4/4	0.89	0.39	58,65,68,79	0
3	EDO	D	203	4/4	0.89	0.17	68,72,72,83	0
2	ACT	H	201	4/4	0.89	0.13	87,87,87,87	0
3	EDO	G	203	4/4	0.89	0.25	85,86,88,89	0
4	FMT	F	203	3/3	0.90	0.16	71,71,77,79	0
3	EDO	E	202	4/4	0.90	0.29	74,75,84,90	0
4	FMT	F	204	3/3	0.91	0.18	65,65,78,79	0
4	FMT	E	204	3/3	0.91	0.16	75,75,81,83	0
3	EDO	F	202	4/4	0.91	0.34	72,72,75,75	0
3	EDO	C	209	4/4	0.91	0.18	56,58,61,63	0
4	FMT	A	204	3/3	0.92	0.21	73,73,84,88	0
4	FMT	A	203	3/3	0.92	0.14	71,71,72,72	0
4	FMT	C	210	3/3	0.92	0.13	77,77,77,78	0
2	ACT	G	201	4/4	0.92	0.10	68,69,74,74	0
4	FMT	F	206	3/3	0.92	0.20	89,89,90,90	0
3	EDO	D	204	4/4	0.93	0.15	74,78,81,83	0
5	1PS	F	201	13/13	0.93	0.18	63,75,84,101	0
3	EDO	C	208	4/4	0.93	0.24	74,80,82,84	0
4	FMT	E	205	3/3	0.94	0.23	83,83,84,85	0
4	FMT	D	206	3/3	0.94	0.19	76,76,77,78	0
4	FMT	D	205	3/3	0.94	0.15	67,67,71,71	0
5	1PS	E	201	13/13	0.94	0.14	55,64,76,89	13

Continued on next page...

Continued from previous page...

Mol	Type	Chain	Res	Atoms	RSCC	RSR	B-factors(\AA^2)	Q<0.9
2	ACT	C	204	4/4	0.94	0.14	78,79,80,81	0
4	FMT	F	205	3/3	0.94	0.21	79,79,80,80	0
4	FMT	H	202	3/3	0.94	0.29	81,81,82,82	0
3	EDO	G	202	4/4	0.95	0.20	46,48,52,54	4
4	FMT	C	211	3/3	0.95	0.20	64,64,68,68	0
2	ACT	C	201	4/4	0.95	0.26	51,56,67,75	0
3	EDO	B	202	4/4	0.95	0.31	76,80,81,83	0
4	FMT	D	207	3/3	0.95	0.44	78,78,81,81	0
4	FMT	G	207	3/3	0.96	0.16	83,83,83,83	0
4	FMT	G	206	3/3	0.96	0.14	80,80,83,86	0
4	FMT	G	204	3/3	0.96	0.38	74,74,76,76	0
3	EDO	C	205	4/4	0.97	0.17	41,42,45,47	0
3	EDO	A	202	4/4	0.97	0.09	55,56,57,67	0
5	1PS	B	201	13/13	0.99	0.15	36,50,56,57	0
5	1PS	D	201	13/13	0.99	0.12	37,52,63,67	0

6.5 Other polymers [i](#)

There are no such residues in this entry.