



Full wwPDB X-ray Structure Validation Report ⓘ

Jun 13, 2024 – 11:09 AM EDT

PDB ID : 1QJD
Title : Flavocytochrome C3 from *Shewanella frigidimarina*
Authors : Taylor, P.; Pealing, S.L.; Reid, G.A.; Chapman, S.K.; Walkinshaw, M.D.
Deposited on : 1999-06-23
Resolution : 1.80 Å(reported)

This is a Full wwPDB X-ray Structure Validation Report for a publicly released PDB entry.

We welcome your comments at validation@mail.wwpdb.org

A user guide is available at

<https://www.wwpdb.org/validation/2017/XrayValidationReportHelp>

with specific help available everywhere you see the ⓘ symbol.

The types of validation reports are described at

<http://www.wwpdb.org/validation/2017/FAQs#types>.

The following versions of software and data (see [references ⓘ](#)) were used in the production of this report:

MolProbity : 4.02b-467
Mogul : 1.8.5 (274361), CSD as541be (2020)
Xtrriage (Phenix) : **NOT EXECUTED**
EDS : **NOT EXECUTED**
buster-report : 1.1.7 (2018)
Percentile statistics : 20191225.v01 (using entries in the PDB archive December 25th 2019)
Ideal geometry (proteins) : Engh & Huber (2001)
Ideal geometry (DNA, RNA) : Parkinson et al. (1996)
Validation Pipeline (wwPDB-VP) : 2.36.2

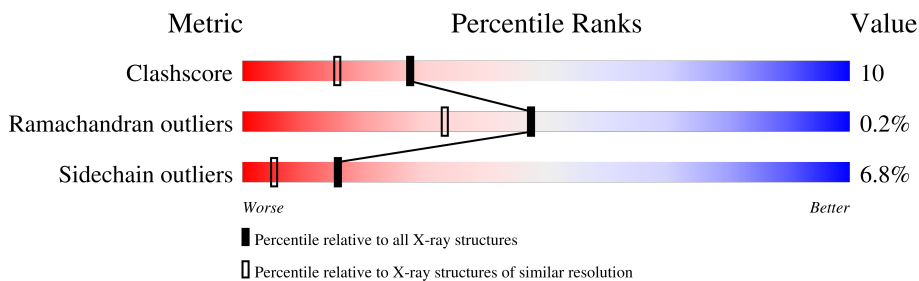
1 Overall quality at a glance

The following experimental techniques were used to determine the structure:

X-RAY DIFFRACTION

The reported resolution of this entry is 1.80 Å.


Percentile scores (ranging between 0-100) for global validation metrics of the entry are shown in the following graphic. The table shows the number of entries on which the scores are based.



Metric	Whole archive (#Entries)	Similar resolution (#Entries, resolution range(Å))
Clashscore	141614	6793 (1.80-1.80)
Ramachandran outliers	138981	6697 (1.80-1.80)
Sidechain outliers	138945	6696 (1.80-1.80)

The table below summarises the geometric issues observed across the polymeric chains and their fit to the electron density. The red, orange, yellow and green segments of the lower bar indicate the fraction of residues that contain outliers for ≥ 3 , 2, 1 and 0 types of geometric quality criteria respectively. A grey segment represents the fraction of residues that are not modelled. The numeric value for each fraction is indicated below the corresponding segment, with a dot representing fractions $\leq 5\%$.

Note EDS was not executed.

Mol	Chain	Length	Quality of chain
1	A	571	 81% 15% . .

2 Entry composition [i](#)

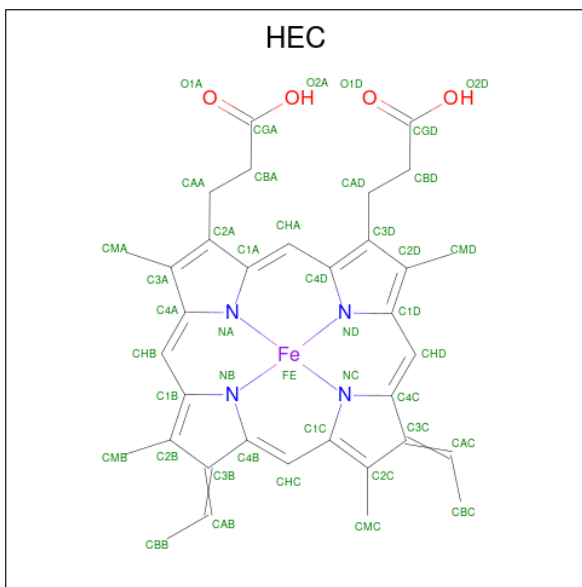
There are 7 unique types of molecules in this entry. The entry contains 5034 atoms, of which 0 are hydrogens and 0 are deuteriums.

In the tables below, the ZeroOcc column contains the number of atoms modelled with zero occupancy, the AltConf column contains the number of residues with at least one atom in alternate conformation and the Trace column contains the number of residues modelled with at most 2 atoms.

- Molecule 1 is a protein called FLAVOCYTOCHROME C3.

Mol	Chain	Residues	Atoms					ZeroOcc	AltConf	Trace
			Total	C	N	O	S			
1	A	568	4217	2615	744	833	25	0	0	0

- Molecule 2 is HEME C (three-letter code: HEC) (formula: $C_{34}H_{34}FeN_4O_4$).



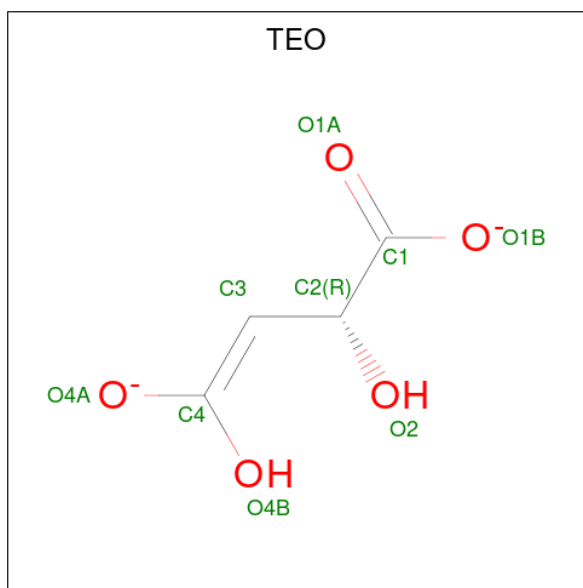
Mol	Chain	Residues	Atoms					ZeroOcc	AltConf
			Total	C	Fe	N	O		
2	A	1	43	34	1	4	4	0	0
2	A	1	43	34	1	4	4	0	0
2	A	1	43	34	1	4	4	0	0
2	A	1	43	34	1	4	4	0	0

- Molecule 3 is FLAVIN-ADENINE DINUCLEOTIDE (three-letter code: FAD) (formula: $C_{27}H_{33}N_9O_{15}P_2$).



Mol	Chain	Residues	Atoms					ZeroOcc	AltConf
			Total	C	N	O	P		
3	A	1	53	27	9	15	2	0	0

- Molecule 4 is MALATE LIKE INTERMEDIATE (three-letter code: TEO) (formula: $C_4H_4O_5$).



Mol	Chain	Residues	Atoms			ZeroOcc	AltConf
			Total	C	O		
4	A	1	9	4	5	0	0

- Molecule 5 is SODIUM ION (three-letter code: NA) (formula: Na).

Mol	Chain	Residues	Atoms	ZeroOcc	AltConf
5	A	1	Total Na 1 1	0	0

- Molecule 6 is GLYCEROL (three-letter code: GOL) (formula: C₃H₈O₃).



Mol	Chain	Residues	Atoms	ZeroOcc	AltConf
6	A	1	Total C O 6 3 3	0	0

- Molecule 7 is water.

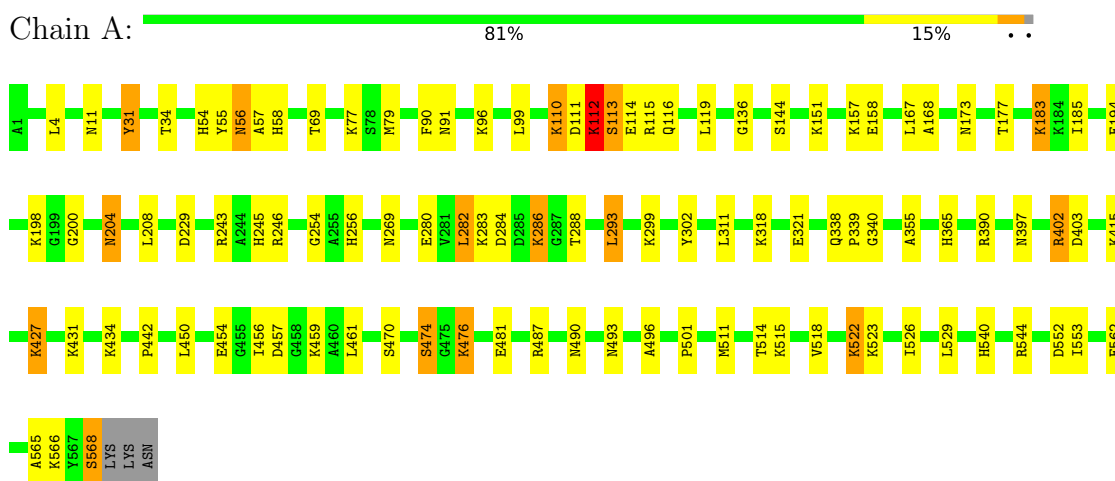
Mol	Chain	Residues	Atoms	ZeroOcc	AltConf
7	A	576	Total O 576 576	0	0

3 Residue-property plots

These plots are drawn for all protein, RNA, DNA and oligosaccharide chains in the entry. The first graphic for a chain summarises the proportions of the various outlier classes displayed in the second graphic. The second graphic shows the sequence view annotated by issues in geometry. Residues are color-coded according to the number of geometric quality criteria for which they contain at least one outlier: green = 0, yellow = 1, orange = 2 and red = 3 or more. Stretches of 2 or more consecutive residues without any outlier are shown as a green connector. Residues present in the sample, but not in the model, are shown in grey.

Note EDS was not executed.

- Molecule 1: FLAVOCYTOCHROME C3



4 Data and refinement statistics

Xtrriage (Phenix) and EDS were not executed - this section is therefore incomplete.

Property	Value	Source
Space group	P 1 21 1	Depositor
Cell constants a, b, c, α , β , γ	45.39Å 91.95Å 78.29Å 90.00° 91.09° 90.00°	Depositor
Resolution (Å)	24.00 – 1.80	Depositor
% Data completeness (in resolution range)	83.1 (24.00-1.80)	Depositor
R_{merge}	0.08	Depositor
R_{sym}	(Not available)	Depositor
Refinement program	SHELXL-97	Depositor
R, R_{free}	0.192 , 0.267	Depositor
Estimated twinning fraction	No twinning to report.	Xtrriage
Total number of atoms	5034	wwPDB-VP
Average B, all atoms (Å ²)	19.0	wwPDB-VP

5 Model quality [i](#)

5.1 Standard geometry [i](#)

Bond lengths and bond angles in the following residue types are not validated in this section: HEC, GOL, NA, TEO, FAD

The Z score for a bond length (or angle) is the number of standard deviations the observed value is removed from the expected value. A bond length (or angle) with $|Z| > 5$ is considered an outlier worth inspection. RMSZ is the root-mean-square of all Z scores of the bond lengths (or angles).

Mol	Chain	Bond lengths		Bond angles	
		RMSZ	# Z >5	RMSZ	# Z >5
1	A	0.37	0/4287	1.03	6/5795 (0.1%)

There are no bond length outliers.

All (6) bond angle outliers are listed below:

Mol	Chain	Res	Type	Atoms	Z	Observed(°)	Ideal(°)
1	A	487	ARG	CD-NE-CZ	12.23	140.73	123.60
1	A	112	LYS	C-N-CA	10.78	148.65	121.70
1	A	487	ARG	NE-CZ-NH1	10.66	125.63	120.30
1	A	487	ARG	NE-CZ-NH2	-6.58	117.01	120.30
1	A	31	TYR	CB-CG-CD1	6.14	124.69	121.00
1	A	402	ARG	NE-CZ-NH2	-5.83	117.39	120.30

There are no chirality outliers.

There are no planarity outliers.

5.2 Too-close contacts [i](#)

In the following table, the Non-H and H(model) columns list the number of non-hydrogen atoms and hydrogen atoms in the chain respectively. The H(added) column lists the number of hydrogen atoms added and optimized by MolProbity. The Clashes column lists the number of clashes within the asymmetric unit, whereas Symm-Clashes lists symmetry-related clashes.

Mol	Chain	Non-H	H(model)	H(added)	Clashes	Symm-Clashes
1	A	4217	0	4151	85	0
2	A	172	0	120	4	0
3	A	53	0	31	2	0
4	A	9	0	2	2	0
5	A	1	0	0	0	0

Continued on next page...

Continued from previous page...

Mol	Chain	Non-H	H(model)	H(added)	Clashes	Symm-Clashes
6	A	6	0	8	1	0
7	A	576	0	0	12	0
All	All	5034	0	4312	88	0

The all-atom clashscore is defined as the number of clashes found per 1000 atoms (including hydrogen atoms). The all-atom clashscore for this structure is 10.

All (88) close contacts within the same asymmetric unit are listed below, sorted by their clash magnitude.

Atom-1	Atom-2	Interatomic distance (Å)	Clash overlap (Å)
1:A:431:LYS:HA	1:A:434:LYS:HD2	1.62	0.80
1:A:204:ASN:HD22	1:A:204:ASN:H	1.28	0.79
1:A:229:ASP:H	1:A:256:HIS:HE1	1.30	0.79
1:A:454:GLU:OE1	6:A:1576:GOL:H2	1.83	0.78
1:A:457:ASP:OD1	1:A:459:LYS:HG3	1.86	0.75
1:A:427:LYS:HE3	1:A:427:LYS:O	1.87	0.75
1:A:284:ASP:OD1	1:A:286:LYS:HD2	1.87	0.74
1:A:397:ASN:HB3	7:A:2438:HOH:O	1.89	0.71
1:A:280:GLU:HB3	1:A:293:LEU:HD11	1.71	0.71
1:A:115:ARG:O	1:A:119:LEU:HD23	1.90	0.71
1:A:431:LYS:HD3	1:A:434:LYS:HD3	1.73	0.70
1:A:526:ILE:HG23	1:A:529:LEU:HB3	1.78	0.66
1:A:302:TYR:HA	7:A:2357:HOH:O	1.96	0.65
1:A:476:LYS:HG2	1:A:476:LYS:O	1.96	0.64
1:A:229:ASP:H	1:A:256:HIS:CE1	2.15	0.64
1:A:69:THR:HB	7:A:2095:HOH:O	2.00	0.62
1:A:183:LYS:O	1:A:185:ILE:HD12	2.01	0.61
1:A:204:ASN:H	1:A:204:ASN:ND2	1.97	0.61
1:A:200:GLY:HA3	1:A:204:ASN:HD21	1.66	0.61
1:A:474:SER:HB2	1:A:476:LYS:HE3	1.81	0.60
1:A:402:ARG:HH22	4:A:1574:TEO:C3	2.14	0.60
1:A:168:ALA:HA	3:A:1573:FAD:N5	2.18	0.58
1:A:144:SER:OG	1:A:562:GLU:HG3	2.04	0.57
1:A:286:LYS:HD3	1:A:288:THR:HG23	1.86	0.57
1:A:311:LEU:HD21	1:A:529:LEU:HD21	1.87	0.56
1:A:157:LYS:HZ1	1:A:340:GLY:HA3	1.70	0.56
1:A:318:LYS:HD2	1:A:339:PRO:O	2.06	0.55
2:A:1569:HEC:HBC3	2:A:1569:HEC:HMC1	1.87	0.55
1:A:431:LYS:HD3	1:A:434:LYS:CD	2.35	0.55
1:A:434:LYS:HE3	7:A:2468:HOH:O	2.08	0.54
2:A:1570:HEC:HMC1	2:A:1570:HEC:HBC3	1.89	0.54

Continued on next page...

Continued from previous page...

Atom-1	Atom-2	Interatomic distance (Å)	Clash overlap (Å)
1:A:183:LYS:HD3	7:A:2293:HOH:O	2.09	0.53
1:A:540:HIS:HD2	7:A:2546:HOH:O	1.91	0.53
1:A:177:THR:OG1	1:A:245:HIS:HE1	1.91	0.53
1:A:112:LYS:NZ	1:A:116:GLN:HG3	2.25	0.52
1:A:501:PRO:HD2	7:A:2521:HOH:O	2.10	0.51
1:A:540:HIS:HE1	1:A:552:ASP:OD2	1.93	0.51
1:A:565:ALA:O	1:A:568:SER:HA	2.12	0.50
1:A:522:LYS:O	1:A:523:LYS:HB2	2.11	0.49
1:A:518:VAL:HB	1:A:529:LEU:HD12	1.93	0.49
1:A:113:SER:O	1:A:113:SER:OG	2.28	0.49
1:A:522:LYS:N	1:A:522:LYS:HD2	2.28	0.48
1:A:470:SER:O	1:A:474:SER:OG	2.30	0.48
1:A:112:LYS:O	1:A:116:GLN:HG3	2.12	0.48
1:A:365:HIS:O	1:A:501:PRO:HA	2.14	0.48
1:A:518:VAL:O	1:A:526:ILE:HG22	2.14	0.47
1:A:167:LEU:HD11	2:A:1572:HEC:HBC2	1.96	0.47
1:A:79:MET:CE	1:A:96:LYS:HE3	2.44	0.47
1:A:112:LYS:HZ2	1:A:116:GLN:HG3	1.79	0.47
1:A:456:ILE:HG21	1:A:461:LEU:HD22	1.96	0.47
1:A:515:LYS:HA	1:A:515:LYS:HD3	1.75	0.47
1:A:518:VAL:CB	1:A:529:LEU:HD12	2.45	0.46
1:A:167:LEU:CD1	2:A:1572:HEC:HBC2	2.44	0.46
1:A:522:LYS:HG2	7:A:2262:HOH:O	2.15	0.46
1:A:91:ASN:HB2	7:A:2137:HOH:O	2.15	0.46
1:A:442:PRO:HD2	1:A:496:ALA:O	2.16	0.45
1:A:111:ASP:HA	1:A:113:SER:OG	2.17	0.45
1:A:318:LYS:HD2	1:A:339:PRO:HA	1.99	0.45
1:A:474:SER:HB2	1:A:476:LYS:CE	2.47	0.45
1:A:514:THR:OG1	1:A:515:LYS:NZ	2.50	0.45
1:A:280:GLU:O	1:A:293:LEU:HD12	2.17	0.45
1:A:493:ASN:ND2	7:A:2515:HOH:O	2.50	0.44
1:A:157:LYS:NZ	1:A:158:GLU:OE2	2.49	0.44
1:A:311:LEU:N	1:A:311:LEU:HD22	2.33	0.44
1:A:338:GLN:HB2	1:A:339:PRO:HD2	1.99	0.44
1:A:427:LYS:O	1:A:427:LYS:HG3	2.12	0.44
1:A:151:LYS:NZ	7:A:2214:HOH:O	2.50	0.44
1:A:390:ARG:NE	7:A:2427:HOH:O	2.50	0.44
1:A:56:ASN:ND2	1:A:58:HIS:H	2.16	0.43
1:A:31:TYR:O	1:A:34:THR:HB	2.18	0.43
1:A:79:MET:HE2	1:A:96:LYS:HE3	2.00	0.43
1:A:173:ASN:HA	1:A:243:ARG:O	2.18	0.43

Continued on next page...

Continued from previous page...

Atom-1	Atom-2	Interatomic distance (Å)	Clash overlap (Å)
1:A:283:LYS:HD3	1:A:526:ILE:HD11	1.98	0.43
1:A:293:LEU:HD12	1:A:293:LEU:H	1.84	0.43
1:A:119:LEU:HD21	1:A:293:LEU:HG	2.01	0.43
1:A:136:GLY:HA3	1:A:553:ILE:HD12	2.01	0.42
1:A:284:ASP:CG	1:A:286:LYS:HD2	2.39	0.42
1:A:355:ALA:HB3	1:A:511:MET:HE3	2.01	0.42
1:A:168:ALA:HB3	1:A:254:GLY:CA	2.49	0.42
1:A:286:LYS:CD	1:A:288:THR:HG23	2.50	0.42
1:A:57:ALA:HB2	1:A:90:PHE:CE1	2.55	0.42
1:A:110:LYS:HA	1:A:110:LYS:NZ	2.35	0.42
1:A:119:LEU:CD1	1:A:282:LEU:HD21	2.50	0.41
1:A:183:LYS:HE2	1:A:183:LYS:HB3	1.67	0.41
1:A:415:LYS:N	1:A:415:LYS:HD2	2.36	0.41
3:A:1573:FAD:H9	3:A:1573:FAD:H1'1	1.79	0.41
1:A:54:HIS:O	1:A:55:TYR:HB3	2.21	0.41
1:A:544:ARG:HH22	4:A:1574:TEO:HOB4	1.68	0.40

There are no symmetry-related clashes.

5.3 Torsion angles [i](#)

5.3.1 Protein backbone [i](#)

In the following table, the Percentiles column shows the percent Ramachandran outliers of the chain as a percentile score with respect to all X-ray entries followed by that with respect to entries of similar resolution.

The Analysed column shows the number of residues for which the backbone conformation was analysed, and the total number of residues.

Mol	Chain	Analysed	Favoured	Allowed	Outliers	Percentiles
1	A	566/571 (99%)	545 (96%)	20 (4%)	1 (0%)	47 33

All (1) Ramachandran outliers are listed below:

Mol	Chain	Res	Type
1	A	114	GLU

5.3.2 Protein sidechains

In the following table, the Percentiles column shows the percent sidechain outliers of the chain as a percentile score with respect to all X-ray entries followed by that with respect to entries of similar resolution.

The Analysed column shows the number of residues for which the sidechain conformation was analysed, and the total number of residues.

Mol	Chain	Analysed	Rotameric	Outliers	Percentiles
1	A	442/445 (99%)	412 (93%)	30 (7%)	16 5

All (30) residues with a non-rotameric sidechain are listed below:

Mol	Chain	Res	Type
1	A	4	LEU
1	A	11	ASN
1	A	56	ASN
1	A	77	LYS
1	A	99	LEU
1	A	110	LYS
1	A	112	LYS
1	A	113	SER
1	A	183	LYS
1	A	194	GLU
1	A	198	LYS
1	A	204	ASN
1	A	208	LEU
1	A	246	ARG
1	A	269	ASN
1	A	282	LEU
1	A	286	LYS
1	A	293	LEU
1	A	299	LYS
1	A	321	GLU
1	A	403	ASP
1	A	427	LYS
1	A	450	LEU
1	A	474	SER
1	A	476	LYS
1	A	481	GLU
1	A	490	ASN
1	A	522	LYS
1	A	566	LYS
1	A	568	SER

Sometimes sidechains can be flipped to improve hydrogen bonding and reduce clashes. All (7) such sidechains are listed below:

Mol	Chain	Res	Type
1	A	56	ASN
1	A	91	ASN
1	A	204	ASN
1	A	245	HIS
1	A	256	HIS
1	A	490	ASN
1	A	540	HIS

5.3.3 RNA [i](#)

There are no RNA molecules in this entry.

5.4 Non-standard residues in protein, DNA, RNA chains [i](#)

There are no non-standard protein/DNA/RNA residues in this entry.

5.5 Carbohydrates [i](#)

There are no monosaccharides in this entry.

5.6 Ligand geometry [i](#)

Of 8 ligands modelled in this entry, 1 is monoatomic - leaving 7 for Mogul analysis.

In the following table, the Counts columns list the number of bonds (or angles) for which Mogul statistics could be retrieved, the number of bonds (or angles) that are observed in the model and the number of bonds (or angles) that are defined in the Chemical Component Dictionary. The Link column lists molecule types, if any, to which the group is linked. The Z score for a bond length (or angle) is the number of standard deviations the observed value is removed from the expected value. A bond length (or angle) with $|Z| > 2$ is considered an outlier worth inspection. RMSZ is the root-mean-square of all Z scores of the bond lengths (or angles).

Mol	Type	Chain	Res	Link	Bond lengths			Bond angles		
					Counts	RMSZ	# Z > 2	Counts	RMSZ	# Z > 2
2	HEC	A	1571	1	32,50,50	1.56	2 (6%)	24,82,82	1.30	4 (16%)
6	GOL	A	1576	-	5,5,5	0.34	0	5,5,5	2.86	1 (20%)
2	HEC	A	1572	1	32,50,50	1.60	2 (6%)	24,82,82	1.22	2 (8%)
3	FAD	A	1573	-	53,58,58	1.38	9 (16%)	68,89,89	1.43	6 (8%)

Mol	Type	Chain	Res	Link	Bond lengths			Bond angles		
					Counts	RMSZ	# Z > 2	Counts	RMSZ	# Z > 2
2	HEC	A	1570	1	32,50,50	1.51	2 (6%)	24,82,82	1.23	2 (8%)
4	TEO	A	1574	-	6,8,8	4.47	4 (66%)	4,10,10	2.66	2 (50%)
2	HEC	A	1569	1	32,50,50	1.46	2 (6%)	24,82,82	1.31	3 (12%)

In the following table, the Chirals column lists the number of chiral outliers, the number of chiral centers analysed, the number of these observed in the model and the number defined in the Chemical Component Dictionary. Similar counts are reported in the Torsion and Rings columns. '-' means no outliers of that kind were identified.

Mol	Type	Chain	Res	Link	Chirals	Torsions	Rings
2	HEC	A	1571	1	-	3/10/54/54	-
6	GOL	A	1576	-	-	3/4/4/4	-
2	HEC	A	1572	1	-	4/10/54/54	-
3	FAD	A	1573	-	-	8/30/50/50	0/6/6/6
2	HEC	A	1570	1	-	3/10/54/54	-
4	TEO	A	1574	-	-	4/6/8/8	-
2	HEC	A	1569	1	-	4/10/54/54	-

All (21) bond length outliers are listed below:

Mol	Chain	Res	Type	Atoms	Z	Observed(Å)	Ideal(Å)
4	A	1574	TEO	O2-C2	-9.22	1.32	1.43
2	A	1572	HEC	C2B-C3B	-5.35	1.35	1.40
2	A	1571	HEC	C3C-C2C	-4.91	1.35	1.40
2	A	1570	HEC	C2B-C3B	-4.90	1.35	1.40
2	A	1571	HEC	C2B-C3B	-4.69	1.35	1.40
2	A	1570	HEC	C3C-C2C	-4.68	1.35	1.40
2	A	1572	HEC	C3C-C2C	-4.49	1.36	1.40
2	A	1569	HEC	C2B-C3B	-4.49	1.36	1.40
2	A	1569	HEC	C3C-C2C	-4.32	1.36	1.40
3	A	1573	FAD	C2'-C3'	3.99	1.61	1.53
4	A	1574	TEO	O4B-C4	3.82	1.49	1.30
3	A	1573	FAD	C1'-C2'	-3.52	1.47	1.52
4	A	1574	TEO	C2-C1	3.47	1.60	1.54
3	A	1573	FAD	C6-C5X	2.99	1.44	1.40
3	A	1573	FAD	C9-C8	2.87	1.43	1.39
4	A	1574	TEO	O1B-C1	-2.61	1.22	1.30
3	A	1573	FAD	O4-C4	-2.47	1.18	1.23
3	A	1573	FAD	O4'-C4'	2.24	1.48	1.43
3	A	1573	FAD	C5'-C4'	2.23	1.54	1.51

Continued on next page...

Continued from previous page...

Mol	Chain	Res	Type	Atoms	Z	Observed(Å)	Ideal(Å)
3	A	1573	FAD	C9A-N10	-2.22	1.37	1.41
3	A	1573	FAD	P-O2P	-2.10	1.45	1.55

All (20) bond angle outliers are listed below:

Mol	Chain	Res	Type	Atoms	Z	Observed(°)	Ideal(°)
3	A	1573	FAD	O5'-C5'-C4'	-6.37	92.36	109.36
6	A	1576	GOL	O2-C2-C3	-6.31	81.34	109.12
3	A	1573	FAD	O4B-C1B-C2B	-4.22	100.75	106.93
4	A	1574	TEO	O1B-C1-O1A	3.93	133.01	124.09
2	A	1569	HEC	CMB-C2B-C1B	-3.26	123.45	128.46
3	A	1573	FAD	O4'-C4'-C3'	-3.12	101.50	109.10
2	A	1569	HEC	CMB-C2B-C3B	3.03	129.38	125.82
2	A	1570	HEC	CBA-CAA-C2A	2.80	117.33	112.60
3	A	1573	FAD	O4-C4-N3	2.64	125.17	120.12
2	A	1571	HEC	CMC-C2C-C1C	-2.63	124.42	128.46
4	A	1574	TEO	O1A-C1-C2	-2.45	116.51	122.42
2	A	1571	HEC	CBD-CAD-C3D	2.41	116.74	112.62
3	A	1573	FAD	O2'-C2'-C3'	-2.35	103.39	109.10
2	A	1572	HEC	CMC-C2C-C1C	-2.32	124.90	128.46
2	A	1572	HEC	CMA-C3A-C2A	2.25	129.18	124.94
3	A	1573	FAD	O2'-C2'-C1'	2.24	115.21	109.80
2	A	1570	HEC	CMC-C2C-C1C	-2.23	125.04	128.46
2	A	1571	HEC	CMB-C2B-C3B	2.17	128.38	125.82
2	A	1571	HEC	CMB-C2B-C1B	-2.17	125.13	128.46
2	A	1569	HEC	CMC-C2C-C1C	-2.10	125.23	128.46

There are no chirality outliers.

All (29) torsion outliers are listed below:

Mol	Chain	Res	Type	Atoms
3	A	1573	FAD	C2'-C3'-C4'-O4'
4	A	1574	TEO	O1B-C1-C2-O2
4	A	1574	TEO	C1-C2-C3-C4
4	A	1574	TEO	O2-C2-C3-C4
6	A	1576	GOL	O1-C1-C2-O2
6	A	1576	GOL	C1-C2-C3-O3
3	A	1573	FAD	C2'-C3'-C4'-C5'
3	A	1573	FAD	O3'-C3'-C4'-O4'
4	A	1574	TEO	O1A-C1-C2-O2
3	A	1573	FAD	O3'-C3'-C4'-C5'
3	A	1573	FAD	P-O3P-PA-O1A

Continued on next page...

Continued from previous page...

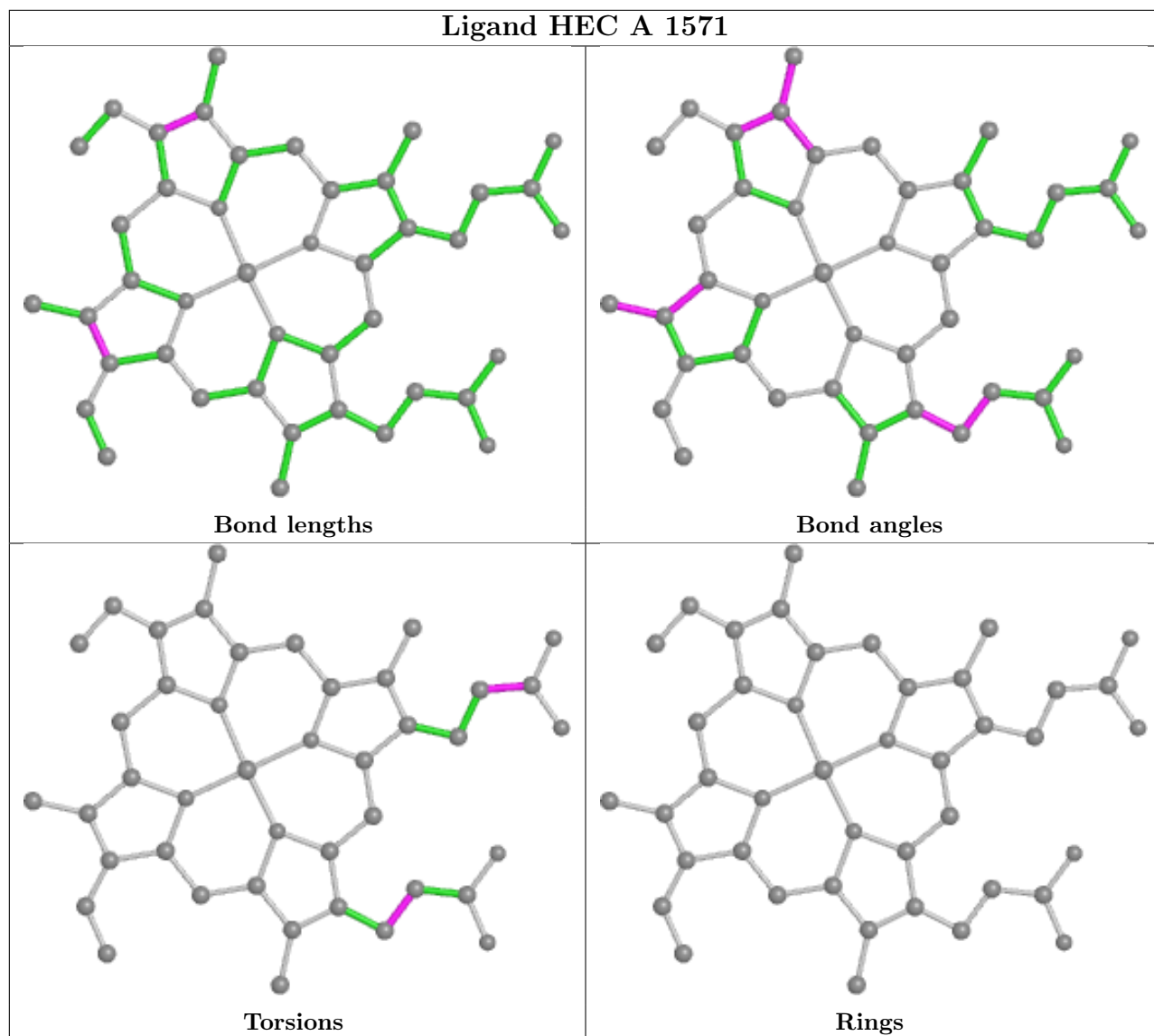
Mol	Chain	Res	Type	Atoms
3	A	1573	FAD	PA-O3P-P-O5'
6	A	1576	GOL	O2-C2-C3-O3
2	A	1571	HEC	C3D-CAD-CBD-CGD
2	A	1569	HEC	C4D-C3D-CAD-CBD
3	A	1573	FAD	P-O3P-PA-O2A
2	A	1569	HEC	CAD-CBD-CGD-O1D
2	A	1572	HEC	CAA-CBA-CGA-O2A
2	A	1572	HEC	CAA-CBA-CGA-O1A
2	A	1569	HEC	CAD-CBD-CGD-O2D
2	A	1570	HEC	CAD-CBD-CGD-O1D
2	A	1570	HEC	CAD-CBD-CGD-O2D
2	A	1572	HEC	C2A-CAA-CBA-CGA
2	A	1571	HEC	CAA-CBA-CGA-O2A
2	A	1571	HEC	CAA-CBA-CGA-O1A
3	A	1573	FAD	O4B-C4B-C5B-O5B
2	A	1570	HEC	CAA-CBA-CGA-O1A
2	A	1569	HEC	CAA-CBA-CGA-O2A
2	A	1572	HEC	CAD-CBD-CGD-O1D

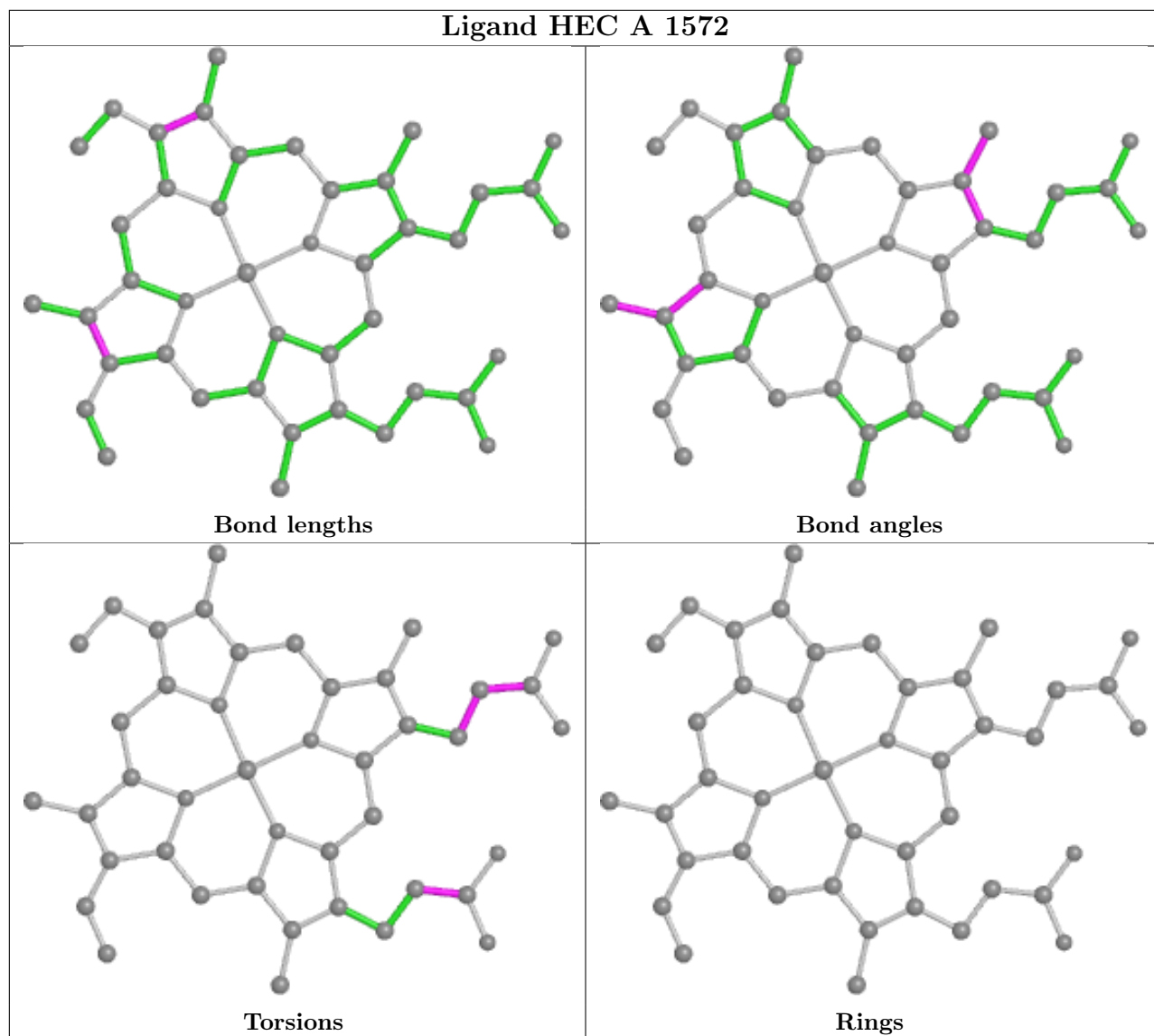
There are no ring outliers.

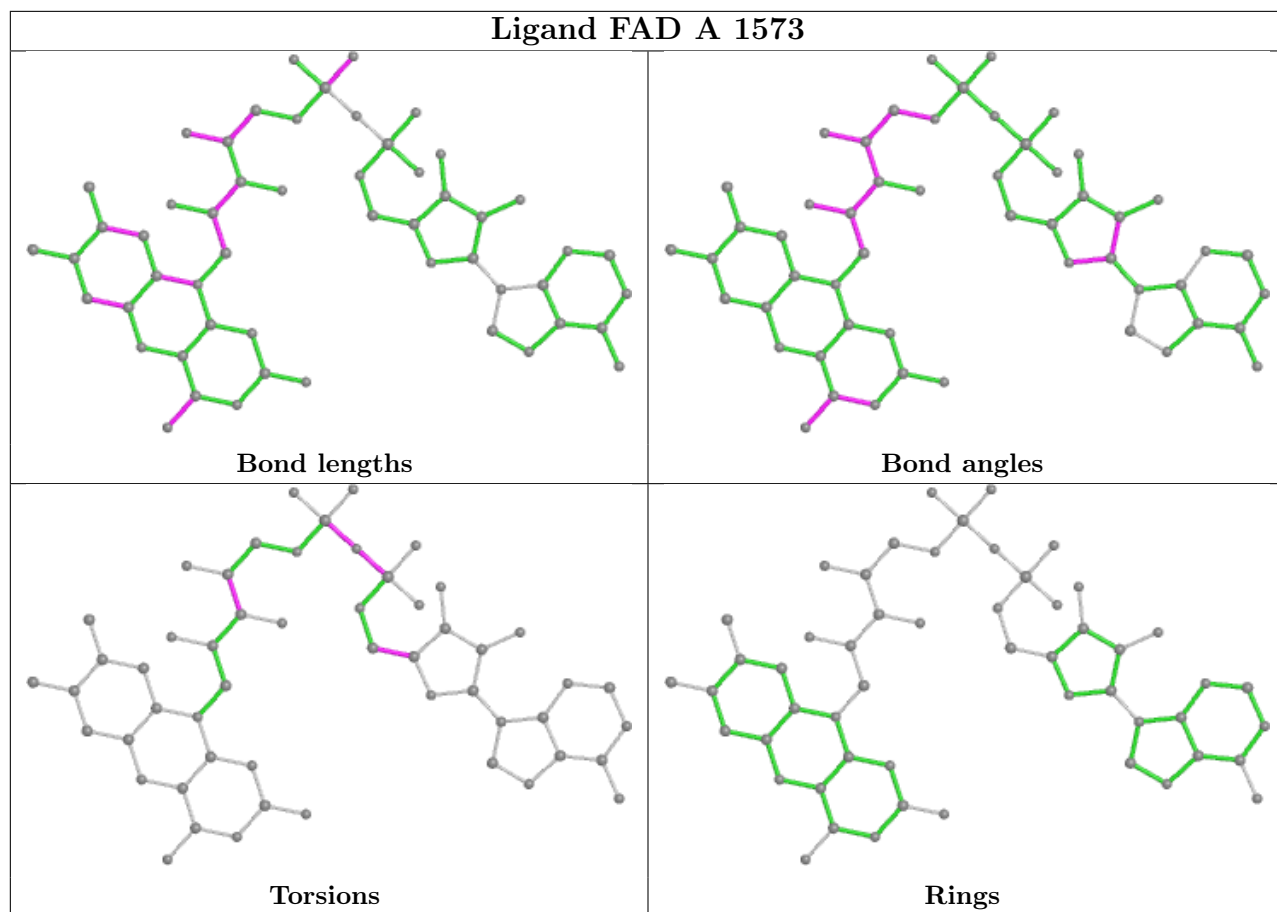
6 monomers are involved in 9 short contacts:

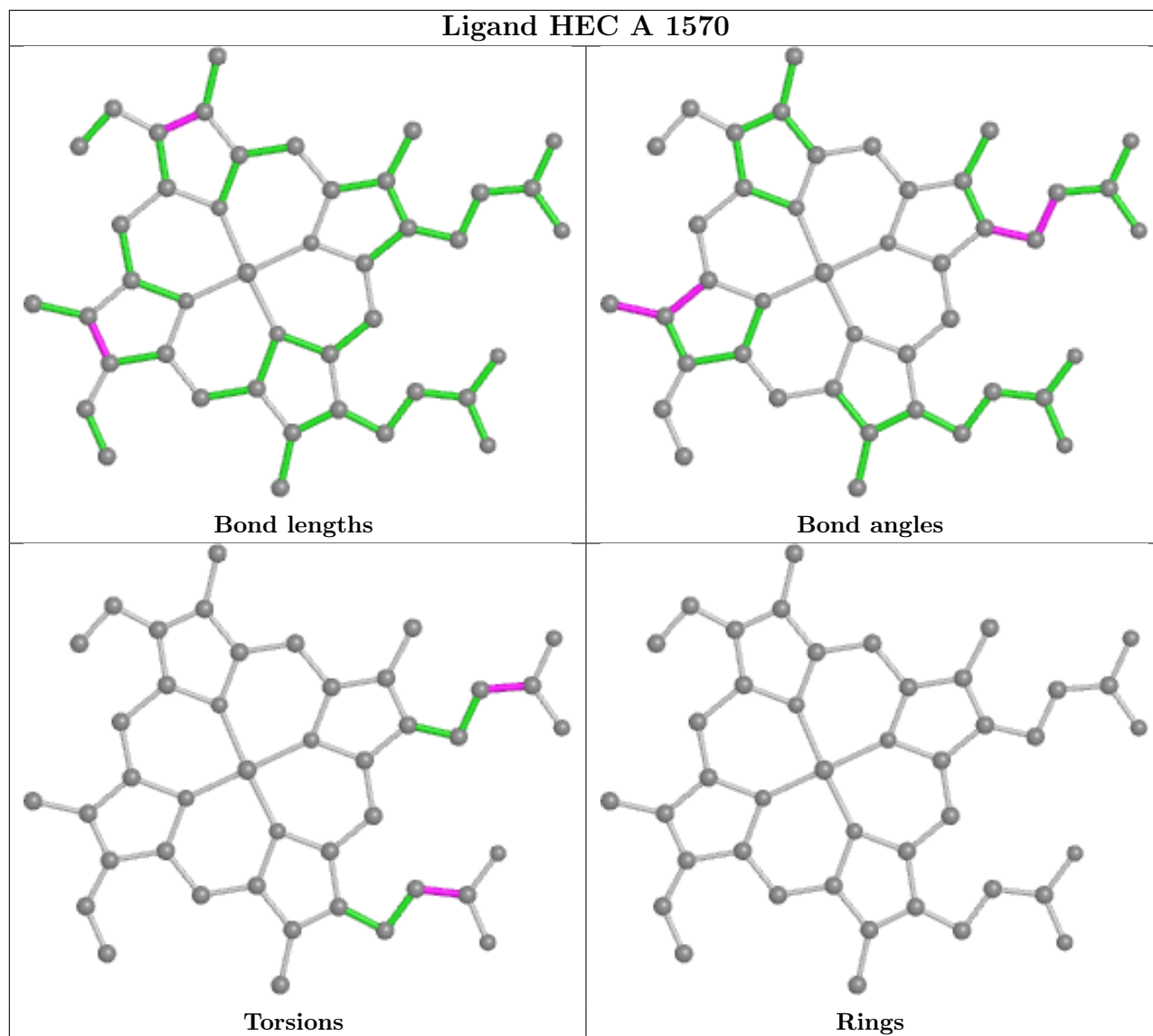
Mol	Chain	Res	Type	Clashes	Symm-Clashes
6	A	1576	GOL	1	0
2	A	1572	HEC	2	0
3	A	1573	FAD	2	0
2	A	1570	HEC	1	0
4	A	1574	TEO	2	0
2	A	1569	HEC	1	0

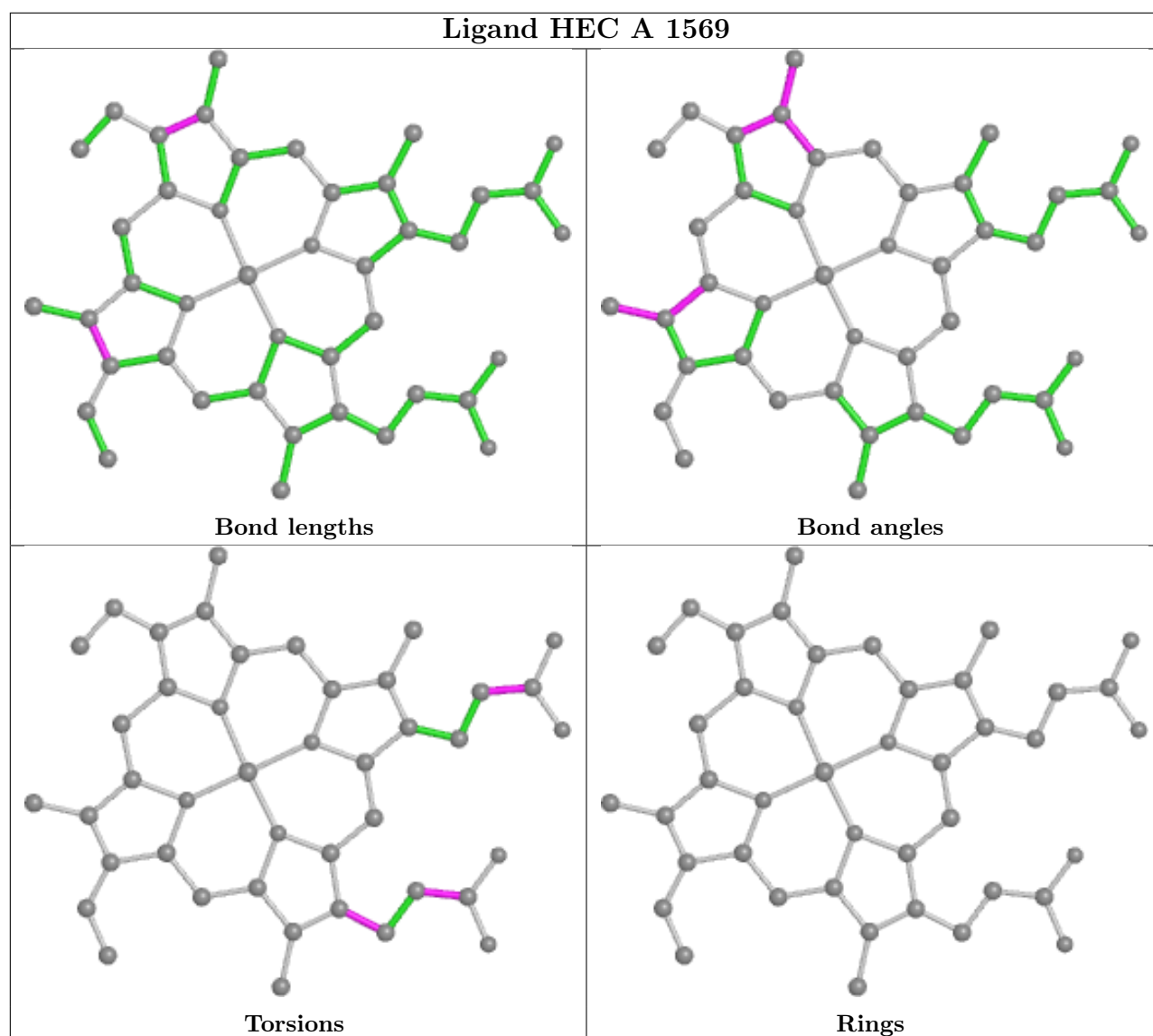
The following is a two-dimensional graphical depiction of Mogul quality analysis of bond lengths, bond angles, torsion angles, and ring geometry for all instances of the Ligand of Interest. In addition, ligands with molecular weight > 250 and outliers as shown on the validation Tables will also be included. For torsion angles, if less than 5% of the Mogul distribution of torsion angles is within 10 degrees of the torsion angle in question, then that torsion angle is considered an outlier. Any bond that is central to one or more torsion angles identified as an outlier by Mogul will be highlighted in the graph. For rings, the root-mean-square deviation (RMSD) between the ring in question and similar rings identified by Mogul is calculated over all ring torsion angles. If the average RMSD is greater than 60 degrees and the minimal RMSD between the ring in question and any Mogul-identified rings is also greater than 60 degrees, then that ring is considered an outlier. The outliers are highlighted in purple. The color gray indicates Mogul did not find sufficient equivalents in the CSD to analyse the geometry.











5.7 Other polymers [\(i\)](#)

There are no such residues in this entry.

5.8 Polymer linkage issues [\(i\)](#)

There are no chain breaks in this entry.

6 Fit of model and data

6.1 Protein, DNA and RNA chains

EDS was not executed - this section is therefore empty.

6.2 Non-standard residues in protein, DNA, RNA chains

EDS was not executed - this section is therefore empty.

6.3 Carbohydrates

EDS was not executed - this section is therefore empty.

6.4 Ligands

EDS was not executed - this section is therefore empty.

6.5 Other polymers

EDS was not executed - this section is therefore empty.