



# Full wwPDB X-ray Structure Validation Report ⓘ

May 6, 2019 – 06:22 PM EDT

PDB ID : 1QJY  
Title : HUMAN RHINOVIRUS 16 COAT PROTEIN IN COMPLEX WITH ANTIVIRAL COMPOUND VP65099  
Authors : Hadfield, A.T.; Diana, G.D.; Rossmann, M.G.  
Deposited on : 1999-07-06  
Resolution : 2.80 Å(reported)

This is a Full wwPDB X-ray Structure Validation Report for a publicly released PDB entry.

We welcome your comments at [validation@mail.wwpdb.org](mailto:validation@mail.wwpdb.org)

A user guide is available at

<https://www.wwpdb.org/validation/2017/XrayValidationReportHelp>

with specific help available everywhere you see the ⓘ symbol.

---

The following versions of software and data (see [references ⓘ](#)) were used in the production of this report:

MolProbity : 4.02b-467  
Mogul : 1.8.0 (224370), CSD as540be (2019)  
Xtriage (Phenix) : 1.13  
EDS : rb-20031633  
Percentile statistics : 20171227.v01 (using entries in the PDB archive December 27th 2017)  
Refmac : 5.8.0158  
CCP4 : 7.0 (Gargrove)  
Ideal geometry (proteins) : Engh & Huber (2001)  
Ideal geometry (DNA, RNA) : Parkinson et al. (1996)  
Validation Pipeline (wwPDB-VP) : rb-20031633

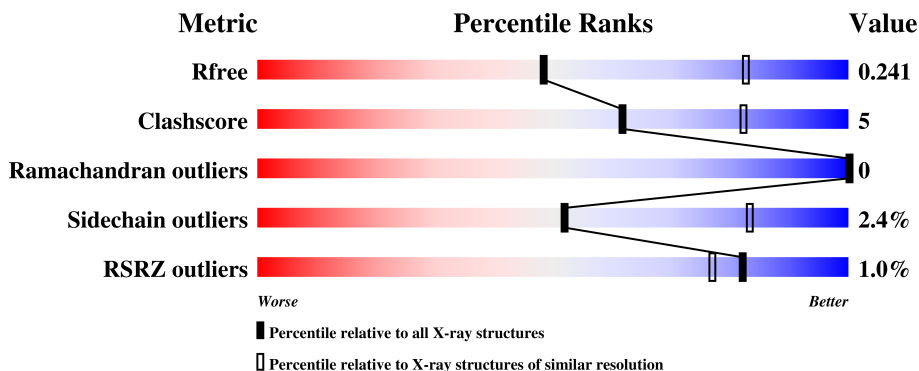
# 1 Overall quality at a glance

The following experimental techniques were used to determine the structure:

*X-RAY DIFFRACTION*

The reported resolution of this entry is 2.80 Å.

Percentile scores (ranging between 0-100) for global validation metrics of the entry are shown in the following graphic. The table shows the number of entries on which the scores are based.



Metric	Whole archive (#Entries)	Similar resolution (#Entries, resolution range(Å))
$R_{free}$	111664	2792 (2.80-2.80)
Clashscore	122126	3209 (2.80-2.80)
Ramachandran outliers	120053	3158 (2.80-2.80)
Sidechain outliers	120020	3160 (2.80-2.80)
RSRZ outliers	108989	2726 (2.80-2.80)

The table below summarises the geometric issues observed across the polymeric chains and their fit to the electron density. The red, orange, yellow and green segments on the lower bar indicate the fraction of residues that contain outliers for  $\geq 3$ , 2, 1 and 0 types of geometric quality criteria. A grey segment represents the fraction of residues that are not modelled. The numeric value for each fraction is indicated below the corresponding segment, with a dot representing fractions  $\leq 5\%$ . The upper red bar (where present) indicates the fraction of residues that have poor fit to the electron density. The numeric value is given above the bar.

Mol	Chain	Length	Quality of chain
1	1	285	 85% 14% •
2	2	261	 84% 12% ••
3	3	238	 92% 7%
4	4	68	 28% 12% • 57%

## 2 Entry composition [i](#)

There are 8 unique types of molecules in this entry. The entry contains 6679 atoms, of which 0 are hydrogens and 0 are deuteriums.

In the tables below, the ZeroOcc column contains the number of atoms modelled with zero occupancy, the AltConf column contains the number of residues with at least one atom in alternate conformation and the Trace column contains the number of residues modelled with at most 2 atoms.

- Molecule 1 is a protein called PROTEIN VP1.

Mol	Chain	Residues	Atoms					ZeroOcc	AltConf	Trace
			Total	C	N	O	S			
1	1	285	2288	1442	397	438	11	0	0	0

- Molecule 2 is a protein called PROTEIN VP2.

Mol	Chain	Residues	Atoms					ZeroOcc	AltConf	Trace
			Total	C	N	O	S			
2	2	252	1978	1252	343	373	10	0	0	0

- Molecule 3 is a protein called PROTEIN VP3.

Mol	Chain	Residues	Atoms					ZeroOcc	AltConf	Trace
			Total	C	N	O	S			
3	3	238	1846	1186	298	347	15	0	0	0

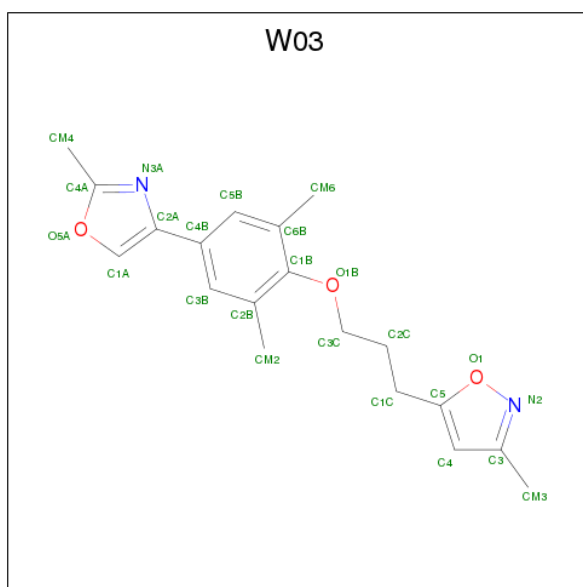
- Molecule 4 is a protein called PROTEIN VP4.

Mol	Chain	Residues	Atoms				ZeroOcc	AltConf	Trace
			Total	C	N	O			
4	4	29	224	138	41	45	0	0	0

- Molecule 5 is ZINC ION (three-letter code: ZN) (formula: Zn).

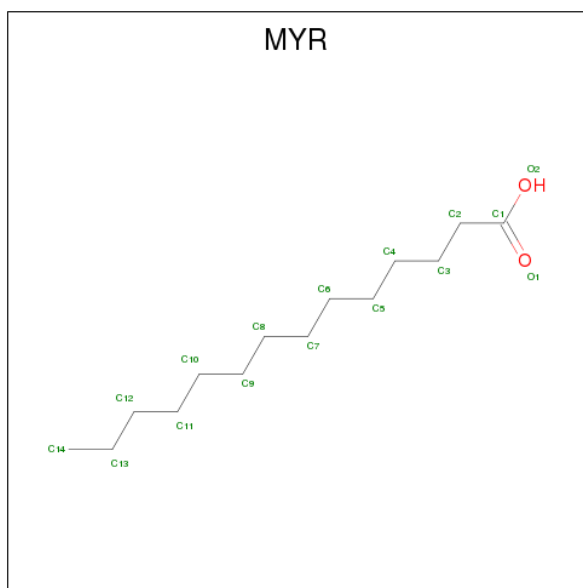
Mol	Chain	Residues	Atoms		ZeroOcc	AltConf
			Total	Zn		
5	1	1	1	1	0	0

- Molecule 6 is 2,6-DIMETHYL-1-(3-[3-METHYL-5-ISOXAZOLYL]-PROPANYL)-4-[2-METHYL-4-ISOXAZOLYL]-PHENOL (three-letter code: W03) (formula: C<sub>19</sub>H<sub>22</sub>N<sub>2</sub>O<sub>3</sub>).



Mol	Chain	Residues	Atoms				ZeroOcc	AltConf
			Total	C	N	O		
6	1	1	24	19	2	3	0	0

- Molecule 7 is MYRISTIC ACID (three-letter code: MYR) (formula:  $C_{14}H_{28}O_2$ ).



Mol	Chain	Residues	Atoms			ZeroOcc	AltConf
			Total	C	O		
7	4	1	15	14	1	0	0

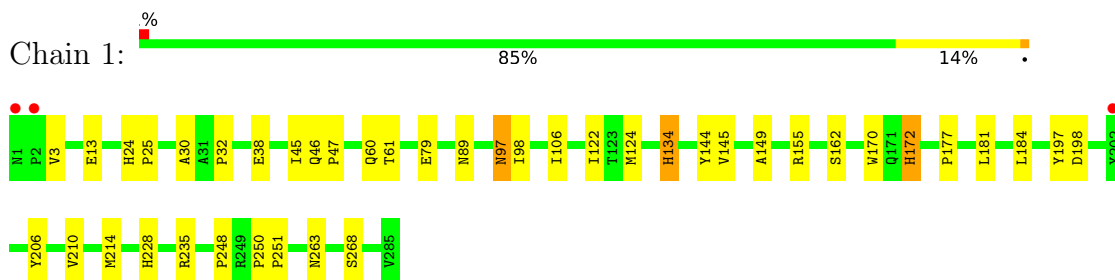
- Molecule 8 is water.

Mol	Chain	Residues	Atoms		ZeroOcc	AltConf
8	1	106	Total 106	O 106	0	0
8	2	108	Total 108	O 108	0	0
8	3	85	Total 85	O 85	0	0
8	4	4	Total 4	O 4	0	0

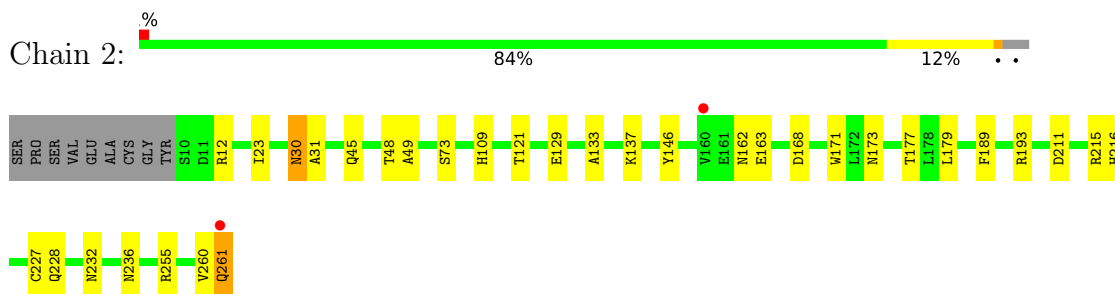
### 3 Residue-property plots [i](#)

These plots are drawn for all protein, RNA and DNA chains in the entry. The first graphic for a chain summarises the proportions of the various outlier classes displayed in the second graphic. The second graphic shows the sequence view annotated by issues in geometry and electron density. Residues are color-coded according to the number of geometric quality criteria for which they contain at least one outlier: green = 0, yellow = 1, orange = 2 and red = 3 or more. A red dot above a residue indicates a poor fit to the electron density ( $RSRZ > 2$ ). Stretches of 2 or more consecutive residues without any outlier are shown as a green connector. Residues present in the sample, but not in the model, are shown in grey.

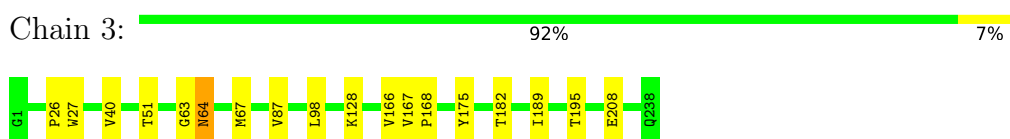
- Molecule 1: PROTEIN VP1



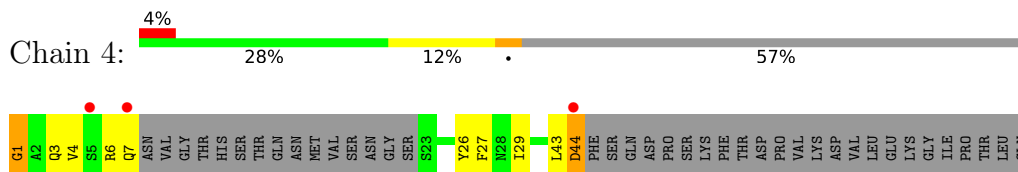
- Molecule 2: PROTEIN VP2



- Molecule 3: PROTEIN VP3



- Molecule 4: PROTEIN VP4



## 4 Data and refinement statistics i

Property	Value	Source
Space group	P 2 21 21	Depositor
Cell constants a, b, c, $\alpha$ , $\beta$ , $\gamma$	362.60Å 347.10Å 334.90Å 90.00° 90.00° 90.00°	Depositor
Resolution (Å)	30.00 – 2.80 39.89 – 2.69	Depositor EDS
% Data completeness (in resolution range)	38.4 (30.00-2.80) 36.2 (39.89-2.69)	Depositor EDS
$R_{merge}$	0.11	Depositor
$R_{sym}$	(Not available)	Depositor
$\langle I/\sigma(I) \rangle$ <sup>1</sup>	7.17 (at 2.69Å)	Xtrriage
Refinement program	X-PLOR 3.1	Depositor
R, $R_{free}$	0.233 , 0.233 0.238 , 0.241	Depositor DCC
$R_{free}$ test set	4115 reflections (0.99%)	wwPDB-VP
Wilson B-factor (Å <sup>2</sup> )	18.7	Xtrriage
Anisotropy	0.119	Xtrriage
Bulk solvent $k_{sol}$ (e/Å <sup>3</sup> ), $B_{sol}$ (Å <sup>2</sup> )	0.32 , 39.0	EDS
L-test for twinning <sup>2</sup>	$\langle  L  \rangle = 0.43$ , $\langle L^2 \rangle = 0.25$	Xtrriage
Estimated twinning fraction	0.044 for -h,l,k	Xtrriage
$F_o, F_c$ correlation	0.83	EDS
Total number of atoms	6679	wwPDB-VP
Average B, all atoms (Å <sup>2</sup> )	20.0	wwPDB-VP

Xtrriage's analysis on translational NCS is as follows: *The largest off-origin peak in the Patterson function is 2.73% of the height of the origin peak. No significant pseudotranslation is detected.*

<sup>1</sup>Intensities estimated from amplitudes.

<sup>2</sup>Theoretical values of  $\langle |L| \rangle$ ,  $\langle L^2 \rangle$  for acentric reflections are 0.5, 0.333 respectively for untwinned datasets, and 0.375, 0.2 for perfectly twinned datasets.

## 5 Model quality [i](#)

### 5.1 Standard geometry [i](#)

Bond lengths and bond angles in the following residue types are not validated in this section: ZN, MYR, W03

The Z score for a bond length (or angle) is the number of standard deviations the observed value is removed from the expected value. A bond length (or angle) with  $|Z| > 5$  is considered an outlier worth inspection. RMSZ is the root-mean-square of all Z scores of the bond lengths (or angles).

Mol	Chain	Bond lengths		Bond angles	
		RMSZ	# $ Z  > 5$	RMSZ	# $ Z  > 5$
1	1	0.37	1/2350 (0.0%)	0.60	0/3204
2	2	0.36	0/2030	0.64	0/2770
3	3	0.35	0/1898	0.64	0/2596
4	4	0.69	0/226	0.98	1/301 (0.3%)
All	All	0.38	1/6504 (0.0%)	0.64	1/8871 (0.0%)

All (1) bond length outliers are listed below:

Mol	Chain	Res	Type	Atoms	Z	Observed(Å)	Ideal(Å)
1	1	134	HIS	CD2-NE2	-5.87	1.25	1.38

All (1) bond angle outliers are listed below:

Mol	Chain	Res	Type	Atoms	Z	Observed(°)	Ideal(°)
4	4	1	GLY	N-CA-C	-5.88	98.41	113.10

There are no chirality outliers.

There are no planarity outliers.

### 5.2 Too-close contacts [i](#)

In the following table, the Non-H and H(model) columns list the number of non-hydrogen atoms and hydrogen atoms in the chain respectively. The H(added) column lists the number of hydrogen atoms added and optimized by MolProbity. The Clashes column lists the number of clashes within the asymmetric unit, whereas Symm-Clashes lists symmetry related clashes.

Mol	Chain	Non-H	H(model)	H(added)	Clashes	Symm-Clashes
1	1	2288	0	2201	27	0
2	2	1978	0	1920	22	0

*Continued on next page...*



*Continued from previous page...*

Mol	Chain	Non-H	H(model)	H(added)	Clashes	Symm-Clashes
3	3	1846	0	1826	13	0
4	4	224	0	209	8	0
5	1	1	0	0	0	0
6	1	24	0	22	2	0
7	4	15	0	27	0	0
8	1	106	0	0	0	0
8	2	108	0	0	2	0
8	3	85	0	0	0	0
8	4	4	0	0	0	0
All	All	6679	0	6205	60	0

The all-atom clashscore is defined as the number of clashes found per 1000 atoms (including hydrogen atoms). The all-atom clashscore for this structure is 5.

All (60) close contacts within the same asymmetric unit are listed below, sorted by their clash magnitude.

Atom-1	Atom-2	Interatomic distance (Å)	Clash overlap (Å)
2:2:260:VAL:O	2:2:261:GLN:HB2	1.84	0.77
2:2:173:ASN:HD21	2:2:179:LEU:HA	1.52	0.75
1:1:13:GLU:HA	1:1:61:THR:HG21	1.71	0.70
1:1:144:TYR:HB2	6:1:7003:W03:C1A	2.24	0.68
4:4:1:GLY:O	4:4:29:ILE:HA	1.94	0.68
1:1:24:HIS:HB3	1:1:25:PRO:HD2	1.79	0.65
1:1:124:MET:HB2	1:1:177:PRO:HG2	1.78	0.64
2:2:12:ARG:HG3	2:2:12:ARG:HH11	1.61	0.64
1:1:3:VAL:CG1	4:4:7:GLN:OE1	2.46	0.64
1:1:38:GLU:HA	2:2:189:PHE:HB2	1.81	0.63
2:2:162:ASN:OD1	2:2:163:GLU:N	2.34	0.60
2:2:211:ASP:OD2	2:2:216:HIS:HD2	1.83	0.60
2:2:146:TYR:OH	2:2:162:ASN:ND2	2.38	0.56
2:2:255:ARG:HH11	2:2:255:ARG:HG3	1.70	0.56
2:2:129:GLU:OE1	2:2:216:HIS:HE1	1.90	0.54
3:3:167:VAL:HG21	3:3:189:ILE:HD11	1.89	0.54
8:2:2091:HOH:O	3:3:208:GLU:HG3	2.08	0.53
4:4:43:LEU:O	4:4:44:ASP:HB3	2.10	0.52
4:4:43:LEU:O	4:4:44:ASP:CB	2.58	0.52
1:1:263:ASN:HA	2:2:133:ALA:HB1	1.92	0.51
2:2:137:LYS:HD3	2:2:163:GLU:O	2.11	0.51
1:1:46:GLN:HB3	1:1:47:PRO:HD2	1.93	0.51
1:1:250:PRO:HB2	2:2:177:THR:HB	1.93	0.51
1:1:98:ILE:HG21	6:1:7003:W03:O1B	2.12	0.50

*Continued on next page...*

*Continued from previous page...*

Atom-1	Atom-2	Interatomic distance (Å)	Clash overlap (Å)
1:1:197:TYR:CE2	1:1:206:TYR:HB2	2.46	0.50
1:1:3:VAL:HB	4:4:7:GLN:OE1	2.12	0.49
1:1:89:ASN:HD22	1:1:155:ARG:HD3	1.77	0.49
1:1:248:PRO:HD3	3:3:40:VAL:CG2	2.42	0.49
3:3:167:VAL:CG2	3:3:189:ILE:HD11	2.44	0.48
1:1:145:VAL:HG13	1:1:149:ALA:HB3	1.96	0.48
2:2:73:SER:HB2	2:2:228:GLN:HE21	1.79	0.47
1:1:122:ILE:HD13	1:1:181:LEU:HD12	1.96	0.47
1:1:79:GLU:HG2	1:1:235:ARG:HG2	1.97	0.47
2:2:30:ASN:ND2	2:2:31:ALA:H	2.12	0.47
2:2:215:ARG:NH1	8:2:2088:HOH:O	2.48	0.46
3:3:128:LYS:HB2	3:3:195:THR:OG1	2.16	0.46
3:3:26:PRO:O	3:3:27:TRP:HB2	2.16	0.46
2:2:173:ASN:ND2	2:2:179:LEU:HA	2.27	0.46
2:2:171:TRP:CD2	3:3:63:GLY:HA2	2.51	0.46
3:3:64:ASN:O	3:3:67:MET:HG2	2.16	0.46
1:1:60:GLN:HG3	3:3:175:TYR:OH	2.16	0.45
4:4:4:VAL:HG22	4:4:27:PHE:CD1	2.52	0.44
3:3:166:VAL:O	3:3:168:PRO:HD3	2.18	0.44
1:1:32:PRO:HB2	1:1:45:ILE:HD12	2.00	0.44
3:3:87:VAL:CG2	3:3:189:ILE:HG13	2.48	0.43
1:1:170:TRP:CH2	1:1:172:HIS:HA	2.54	0.43
3:3:51:THR:HG21	3:3:98:LEU:HB2	2.00	0.43
2:2:171:TRP:CE2	3:3:63:GLY:HA2	2.54	0.42
2:2:23:ILE:HG21	2:2:109:HIS:CD2	2.54	0.42
4:4:4:VAL:HA	4:4:26:TYR:O	2.19	0.42
1:1:134:HIS:HD1	1:1:228:HIS:CE1	2.38	0.42
2:2:48:THR:HG23	2:2:49:ALA:N	2.35	0.42
1:1:250:PRO:HA	1:1:251:PRO:HD3	1.90	0.42
1:1:97:ASN:HA	1:1:97:ASN:HD22	1.69	0.41
2:2:121:THR:HB	2:2:227:CYS:HB2	2.02	0.41
2:2:255:ARG:HG3	2:2:255:ARG:NH1	2.36	0.41
1:1:30:ALA:O	1:1:32:PRO:HD3	2.20	0.41
1:1:184:LEU:HB2	1:1:214:MET:CE	2.51	0.41
1:1:198:ASP:HB3	1:1:210:VAL:HG13	2.04	0.40
1:1:3:VAL:CB	4:4:7:GLN:OE1	2.69	0.40

There are no symmetry-related clashes.

## 5.3 Torsion angles [i](#)

### 5.3.1 Protein backbone [i](#)

In the following table, the Percentiles column shows the percent Ramachandran outliers of the chain as a percentile score with respect to all X-ray entries followed by that with respect to entries of similar resolution.

The Analysed column shows the number of residues for which the backbone conformation was analysed, and the total number of residues.

Mol	Chain	Analysed	Favoured	Allowed	Outliers	Percentiles	
1	1	283/285 (99%)	270 (95%)	13 (5%)	0	100	100
2	2	250/261 (96%)	234 (94%)	16 (6%)	0	100	100
3	3	236/238 (99%)	228 (97%)	8 (3%)	0	100	100
4	4	25/68 (37%)	25 (100%)	0	0	100	100
All	All	794/852 (93%)	757 (95%)	37 (5%)	0	100	100

There are no Ramachandran outliers to report.

### 5.3.2 Protein sidechains [i](#)

In the following table, the Percentiles column shows the percent sidechain outliers of the chain as a percentile score with respect to all X-ray entries followed by that with respect to entries of similar resolution.

The Analysed column shows the number of residues for which the sidechain conformation was analysed, and the total number of residues.

Mol	Chain	Analysed	Rotameric	Outliers	Percentiles	
1	1	256/256 (100%)	251 (98%)	5 (2%)	58	86
2	2	221/228 (97%)	214 (97%)	7 (3%)	42	76
3	3	210/210 (100%)	208 (99%)	2 (1%)	78	94
4	4	23/59 (39%)	20 (87%)	3 (13%)	4	14
All	All	710/753 (94%)	693 (98%)	17 (2%)	52	83

All (17) residues with a non-rotameric sidechain are listed below:

Mol	Chain	Res	Type
1	1	97	ASN
1	1	106	ILE

*Continued on next page...*

*Continued from previous page...*

Mol	Chain	Res	Type
1	1	162	SER
1	1	172	HIS
1	1	268	SER
2	2	30	ASN
2	2	45	GLN
2	2	168	ASP
2	2	193	ARG
2	2	232	ASN
2	2	236	ASN
2	2	261	GLN
3	3	64	ASN
3	3	182	THR
4	4	3	GLN
4	4	6	ARG
4	4	44	ASP

Some sidechains can be flipped to improve hydrogen bonding and reduce clashes. All (11) such sidechains are listed below:

Mol	Chain	Res	Type
1	1	89	ASN
1	1	97	ASN
1	1	171	GLN
2	2	30	ASN
2	2	55	GLN
2	2	159	GLN
2	2	173	ASN
2	2	216	HIS
2	2	232	ASN
2	2	236	ASN
4	4	28	ASN

### 5.3.3 RNA [i](#)

There are no RNA molecules in this entry.

### 5.4 Non-standard residues in protein, DNA, RNA chains [i](#)

There are no non-standard protein/DNA/RNA residues in this entry.

## 5.5 Carbohydrates [i](#)

There are no carbohydrates in this entry.

## 5.6 Ligand geometry [i](#)

Of 3 ligands modelled in this entry, 1 is monoatomic - leaving 2 for Mogul analysis.

In the following table, the Counts columns list the number of bonds (or angles) for which Mogul statistics could be retrieved, the number of bonds (or angles) that are observed in the model and the number of bonds (or angles) that are defined in the Chemical Component Dictionary. The Link column lists molecule types, if any, to which the group is linked. The Z score for a bond length (or angle) is the number of standard deviations the observed value is removed from the expected value. A bond length (or angle) with  $|Z| > 2$  is considered an outlier worth inspection. RMSZ is the root-mean-square of all Z scores of the bond lengths (or angles).

Mol	Type	Chain	Res	Link	Bond lengths			Bond angles		
					Counts	RMSZ	# Z  > 2	Counts	RMSZ	# Z  > 2
6	W03	1	7003	-	19,26,26	1.58	3 (15%)	25,36,36	2.25	11 (44%)
7	MYR	4	4000	4	14,14,15	0.60	0	13,13,15	0.74	0

In the following table, the Chirals column lists the number of chiral outliers, the number of chiral centers analysed, the number of these observed in the model and the number defined in the Chemical Component Dictionary. Similar counts are reported in the Torsion and Rings columns. '–' means no outliers of that kind were identified.

Mol	Type	Chain	Res	Link	Chirals	Torsions	Rings
6	W03	1	7003	-	-	0/10/11/11	0/3/3/3
7	MYR	4	4000	4	-	0/11/12/13	0/0/0/0

All (3) bond length outliers are listed below:

Mol	Chain	Res	Type	Atoms	Z	Observed(Å)	Ideal(Å)
6	1	7003	W03	C4-C5	-3.67	1.34	1.39
6	1	7003	W03	C4B-C2A	-2.72	1.44	1.48
6	1	7003	W03	C3B-C2B	2.56	1.43	1.39

All (11) bond angle outliers are listed below:

Mol	Chain	Res	Type	Atoms	Z	Observed(°)	Ideal(°)
6	1	7003	W03	C1A-C2A-C4B	-5.97	121.14	129.44
6	1	7003	W03	C6B-C1B-C2B	-2.65	116.47	122.13
6	1	7003	W03	C4B-C3B-C2B	-2.44	119.42	122.34
6	1	7003	W03	C5B-C4B-C2A	-2.16	117.56	120.58

*Continued on next page...*

*Continued from previous page...*

Mol	Chain	Res	Type	Atoms	Z	Observed(°)	Ideal(°)
6	1	7003	W03	CM6-C6B-C5B	-2.10	115.59	119.49
6	1	7003	W03	C3B-C4B-C2A	2.03	123.40	120.58
6	1	7003	W03	C3C-O1B-C1B	2.28	120.97	114.16
6	1	7003	W03	C1C-C5-C4	2.66	135.50	128.60
6	1	7003	W03	C5B-C6B-C1B	2.79	122.02	117.89
6	1	7003	W03	C3B-C2B-C1B	2.85	122.11	117.89
6	1	7003	W03	C4B-C2A-N3A	4.83	128.79	120.82

There are no chirality outliers.

There are no torsion outliers.

There are no ring outliers.

1 monomer is involved in 2 short contacts:

Mol	Chain	Res	Type	Clashes	Symm-Clashes
6	1	7003	W03	2	0

## 5.7 Other polymers [i](#)

There are no such residues in this entry.

## 5.8 Polymer linkage issues [i](#)

There are no chain breaks in this entry.

## 6 Fit of model and data [i](#)

### 6.1 Protein, DNA and RNA chains [i](#)

In the following table, the column labelled ‘#RSRZ> 2’ contains the number (and percentage) of RSRZ outliers, followed by percent RSRZ outliers for the chain as percentile scores relative to all X-ray entries and entries of similar resolution. The OWAB column contains the minimum, median, 95<sup>th</sup> percentile and maximum values of the occupancy-weighted average B-factor per residue. The column labelled ‘Q< 0.9’ lists the number of (and percentage) of residues with an average occupancy less than 0.9.

Mol	Chain	Analysed	<RSRZ>	#RSRZ>2	OWAB(Å <sup>2</sup> )	Q<0.9
1	1	285/285 (100%)	-0.76	3 (1%) 80 75	7, 19, 37, 62	0
2	2	252/261 (96%)	-0.88	2 (0%) 86 81	9, 15, 37, 63	0
3	3	238/238 (100%)	-1.03	0 100 100	6, 15, 31, 46	0
4	4	29/68 (42%)	0.25	3 (10%) 6 3	12, 44, 64, 72	0
All	All	804/852 (94%)	-0.84	8 (0%) 82 77	6, 16, 41, 72	0

All (8) RSRZ outliers are listed below:

Mol	Chain	Res	Type	RSRZ
4	4	7	GLN	4.5
1	1	1	ASN	3.7
2	2	160	VAL	3.5
4	4	5	SER	2.6
1	1	202	TYR	2.6
4	4	44	ASP	2.2
2	2	261	GLN	2.2
1	1	2	PRO	2.1

### 6.2 Non-standard residues in protein, DNA, RNA chains [i](#)

There are no non-standard protein/DNA/RNA residues in this entry.

### 6.3 Carbohydrates [i](#)

There are no carbohydrates in this entry.

## 6.4 Ligands [i](#)

In the following table, the Atoms column lists the number of modelled atoms in the group and the number defined in the chemical component dictionary. The B-factors column lists the minimum, median, 95<sup>th</sup> percentile and maximum values of B factors of atoms in the group. The column labelled 'Q< 0.9' lists the number of atoms with occupancy less than 0.9.

Mol	Type	Chain	Res	Atoms	RSCC	RSR	B-factors( $\text{\AA}^2$ )	Q<0.9
7	MYR	4	4000	15/16	0.87	0.31	46,55,64,64	0
6	W03	1	7003	24/24	0.96	0.13	16,22,26,27	0
5	ZN	1	6000	1/1	0.99	0.13	100,100,100,100	0

## 6.5 Other polymers [i](#)

There are no such residues in this entry.