



# Full wwPDB X-ray Structure Validation Report ⓘ

Dec 10, 2018 – 09:25 PM EST

PDB ID : 5QJJ  
Title : PanDDA analysis group deposition of models with modelled events (e.g. bound ligands) – Crystal Structure of NUDT5 in complex with Z24758179  
Authors : Dubianok, Y.; Collins, P.; Krojer, T.; Wright, N.; Strain-Damerell, C.; Burgess-Brown, N.; Bountra, C.; Arrowsmith, C.H.; Edwards, A.; Huber, K.; von Delft, F.  
Deposited on : 2018-10-31  
Resolution : 1.71 Å(reported)

This is a Full wwPDB X-ray Structure Validation Report for a publicly released PDB entry.

We welcome your comments at [validation@mail.wwpdb.org](mailto:validation@mail.wwpdb.org)

A user guide is available at

<https://www.wwpdb.org/validation/2017/XrayValidationReportHelp>

with specific help available everywhere you see the ⓘ symbol.

---

The following versions of software and data (see [references ⓘ](#)) were used in the production of this report:

MolProbity : 4.02b-467  
Mogul : 1.7.3 (157068), CSD as539be (2018)  
Xtriage (Phenix) : 1.13  
EDS : rb-20031633  
Percentile statistics : 20171227.v01 (using entries in the PDB archive December 27th 2017)  
Refmac : 5.8.0158  
CCP4 : 7.0 (Gargrove)  
Ideal geometry (proteins) : Engh & Huber (2001)  
Ideal geometry (DNA, RNA) : Parkinson et al. (1996)  
Validation Pipeline (wwPDB-VP) : rb-20031633

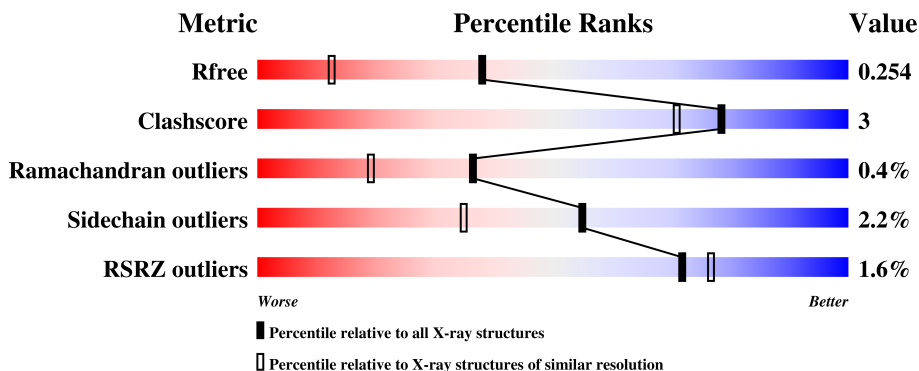
# 1 Overall quality at a glance

The following experimental techniques were used to determine the structure:

*X-RAY DIFFRACTION*

The reported resolution of this entry is 1.71 Å.

Percentile scores (ranging between 0-100) for global validation metrics of the entry are shown in the following graphic. The table shows the number of entries on which the scores are based.



Metric	Whole archive (#Entries)	Similar resolution (#Entries, resolution range(Å))
$R_{free}$	111664	4894 (1.74-1.70)
Clashscore	122126	5296 (1.74-1.70)
Ramachandran outliers	120053	5219 (1.74-1.70)
Sidechain outliers	120020	5219 (1.74-1.70)
RSRZ outliers	108989	4804 (1.74-1.70)

The table below summarises the geometric issues observed across the polymeric chains and their fit to the electron density. The red, orange, yellow and green segments on the lower bar indicate the fraction of residues that contain outliers for  $\geq 3$ , 2, 1 and 0 types of geometric quality criteria. A grey segment represents the fraction of residues that are not modelled. The numeric value for each fraction is indicated below the corresponding segment, with a dot representing fractions  $\leq 5\%$ . The upper red bar (where present) indicates the fraction of residues that have poor fit to the electron density. The numeric value is given above the bar.

Mol	Chain	Length	Quality of chain
1	A	209	 86% 6% • 7%
1	B	209	 85% 7% 7%
1	C	209	 83% 8% • 8%
1	D	209	 84% 6% • 9%

## 2 Entry composition [i](#)

There are 6 unique types of molecules in this entry. The entry contains 6071 atoms, of which 0 are hydrogens and 0 are deuteriums.

In the tables below, the ZeroOcc column contains the number of atoms modelled with zero occupancy, the AltConf column contains the number of residues with at least one atom in alternate conformation and the Trace column contains the number of residues modelled with at most 2 atoms.

- Molecule 1 is a protein called ADP-sugar pyrophosphatase.

Mol	Chain	Residues	Atoms					ZeroOcc	AltConf	Trace
			Total	C	N	O	S			
1	A	194	1450	917	242	283	8	0	0	0
1	B	194	1464	924	244	288	8	0	0	0
1	C	192	1414	892	236	279	7	0	0	0
1	D	190	1434	908	241	277	8	0	1	0

There are 4 discrepancies between the modelled and reference sequences:

Chain	Residue	Modelled	Actual	Comment	Reference
A	0	SER	-	expression tag	UNP Q9UKK9
B	0	SER	-	expression tag	UNP Q9UKK9
C	0	SER	-	expression tag	UNP Q9UKK9
D	0	SER	-	expression tag	UNP Q9UKK9

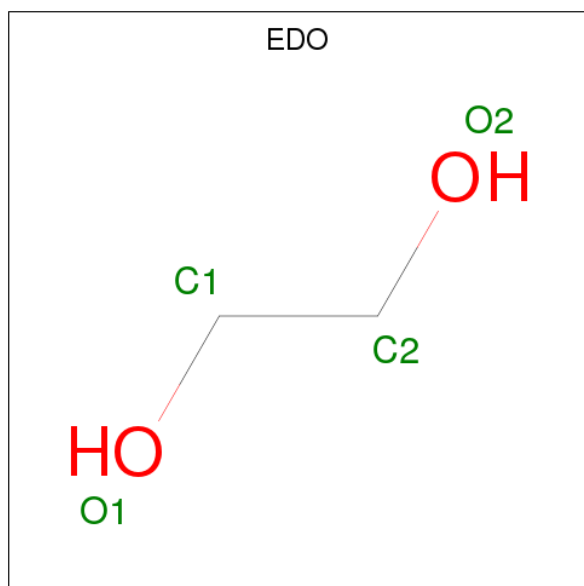
- Molecule 2 is MAGNESIUM ION (three-letter code: MG) (formula: Mg).

Mol	Chain	Residues	Atoms		ZeroOcc	AltConf
2	B	2	Total	Mg	0	0
			2	2		
2	A	2	Total	Mg	0	0
			2	2		
2	D	2	Total	Mg	0	0
			2	2		
2	C	2	Total	Mg	0	0
			2	2		

- Molecule 3 is CHLORIDE ION (three-letter code: CL) (formula: Cl).

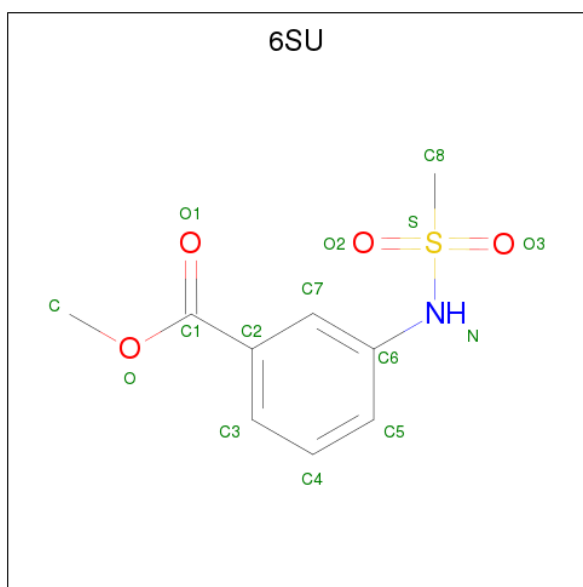
Mol	Chain	Residues	Atoms	ZeroOcc	AltConf
3	A	1	Total Cl 1 1	0	0

- Molecule 4 is 1,2-ETHANEDIOL (three-letter code: EDO) (formula:  $C_2H_6O_2$ ).



Mol	Chain	Residues	Atoms	ZeroOcc	AltConf
4	A	1	Total C O 4 2 2	0	0
4	B	1	Total C O 4 2 2	0	0
4	B	1	Total C O 4 2 2	0	0
4	C	1	Total C O 4 2 2	0	0
4	C	1	Total C O 4 2 2	0	0

- Molecule 5 is methyl 3-(methylsulfonylamino)benzoate (three-letter code: 6SU) (formula:  $C_9H_{11}NO_4S$ ).



Mol	Chain	Residues	Atoms					ZeroOcc	AltConf
			Total	C	N	O	S		
5	C	1	15	9	1	4	1	0	0
5	D	1	15	9	1	4	1	0	0


- Molecule 6 is water.

Mol	Chain	Residues	Atoms		ZeroOcc	AltConf
			Total	O		
6	A	70	70	70	0	0
6	B	69	69	69	0	0
6	C	74	74	74	0	0
6	D	37	37	37	0	0

### 3 Residue-property plots [i](#)

These plots are drawn for all protein, RNA and DNA chains in the entry. The first graphic for a chain summarises the proportions of the various outlier classes displayed in the second graphic. The second graphic shows the sequence view annotated by issues in geometry and electron density. Residues are color-coded according to the number of geometric quality criteria for which they contain at least one outlier: green = 0, yellow = 1, orange = 2 and red = 3 or more. A red dot above a residue indicates a poor fit to the electron density ( $RSRZ > 2$ ). Stretches of 2 or more consecutive residues without any outlier are shown as a green connector. Residues present in the sample, but not in the model, are shown in grey.

- Molecule 1: ADP-sugar pyrophosphatase

Chain A: 




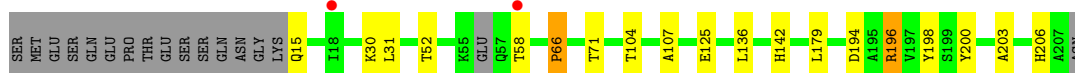
- Molecule 1: ADP-sugar pyrophosphatase

Chain B: 




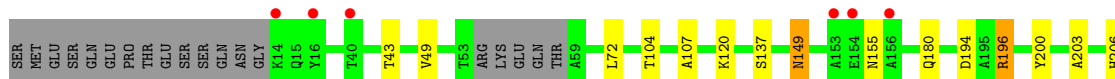
- Molecule 1: ADP-sugar pyrophosphatase

Chain C: 



- Molecule 1: ADP-sugar pyrophosphatase

Chain D: 



## 4 Data and refinement statistics

Property	Value	Source
Space group	P 1	Depositor
Cell constants a, b, c, $\alpha$ , $\beta$ , $\gamma$	48.86Å 59.60Å 79.86Å 79.70° 81.81° 76.08°	Depositor
Resolution (Å)	78.14 – 1.71 49.87 – 1.71	Depositor EDS
% Data completeness (in resolution range)	95.9 (78.14-1.71) 95.9 (49.87-1.71)	Depositor EDS
$R_{merge}$	0.03	Depositor
$R_{sym}$	(Not available)	Depositor
$\langle I/\sigma(I) \rangle$ <sup>1</sup>	1.00 (at 1.71Å)	Xtrriage
Refinement program	REFMAC 5.8.0189	Depositor
R, $R_{free}$	0.214 , 0.247 0.226 , 0.254	Depositor DCC
$R_{free}$ test set	4488 reflections (5.05%)	wwPDB-VP
Wilson B-factor (Å <sup>2</sup> )	27.3	Xtrriage
Anisotropy	0.112	Xtrriage
Bulk solvent $k_{sol}$ (e/Å <sup>3</sup> ), $B_{sol}$ (Å <sup>2</sup> )	0.33 , 38.1	EDS
L-test for twinning <sup>2</sup>	$\langle  L  \rangle = 0.50$ , $\langle L^2 \rangle = 0.33$	Xtrriage
Estimated twinning fraction	No twinning to report.	Xtrriage
$F_o, F_c$ correlation	0.96	EDS
Total number of atoms	6071	wwPDB-VP
Average B, all atoms (Å <sup>2</sup> )	36.0	wwPDB-VP

Xtrriage's analysis on translational NCS is as follows: *The largest off-origin peak in the Patterson function is 7.24% of the height of the origin peak. No significant pseudotranslation is detected.*

<sup>1</sup>Intensities estimated from amplitudes.

<sup>2</sup>Theoretical values of  $\langle |L| \rangle$ ,  $\langle L^2 \rangle$  for acentric reflections are 0.5, 0.333 respectively for untwinned datasets, and 0.375, 0.2 for perfectly twinned datasets.

## 5 Model quality [i](#)

### 5.1 Standard geometry [i](#)

Bond lengths and bond angles in the following residue types are not validated in this section: MG, CL, EDO, 6SU

The Z score for a bond length (or angle) is the number of standard deviations the observed value is removed from the expected value. A bond length (or angle) with  $|Z| > 5$  is considered an outlier worth inspection. RMSZ is the root-mean-square of all Z scores of the bond lengths (or angles).

Mol	Chain	Bond lengths		Bond angles	
		RMSZ	# Z  >5	RMSZ	# Z  >5
1	A	0.87	0/1478	0.95	2/2019 (0.1%)
1	B	0.82	0/1492	0.89	3/2035 (0.1%)
1	C	0.83	0/1441	0.93	1/1971 (0.1%)
1	D	0.82	0/1462	0.94	4/1995 (0.2%)
All	All	0.84	0/5873	0.93	10/8020 (0.1%)

There are no bond length outliers.

All (10) bond angle outliers are listed below:

Mol	Chain	Res	Type	Atoms	Z	Observed(°)	Ideal(°)
1	B	196	ARG	NE-CZ-NH1	8.96	124.78	120.30
1	C	196	ARG	NE-CZ-NH1	8.63	124.62	120.30
1	D	196[A]	ARG	NE-CZ-NH1	7.35	123.98	120.30
1	D	196[B]	ARG	NE-CZ-NH1	7.35	123.98	120.30
1	A	191	LEU	CA-CB-CG	7.01	131.41	115.30
1	D	196[A]	ARG	NE-CZ-NH2	-6.34	117.13	120.30
1	D	196[B]	ARG	NE-CZ-NH2	-6.34	117.13	120.30
1	B	194	ASP	CB-CG-OD2	-5.53	113.32	118.30
1	A	70	ARG	NE-CZ-NH2	-5.50	117.55	120.30
1	B	183	ASP	CB-CG-OD1	5.19	122.97	118.30

There are no chirality outliers.

There are no planarity outliers.

### 5.2 Too-close contacts [i](#)

In the following table, the Non-H and H(model) columns list the number of non-hydrogen atoms and hydrogen atoms in the chain respectively. The H(added) column lists the number of hydrogen



atoms added and optimized by MolProbity. The Clashes column lists the number of clashes within the asymmetric unit, whereas Symm-Clashes lists symmetry related clashes.

Mol	Chain	Non-H	H(model)	H(added)	Clashes	Symm-Clashes
1	A	1450	0	1405	9	0
1	B	1464	0	1414	8	0
1	C	1414	0	1324	13	0
1	D	1434	0	1393	14	0
2	A	2	0	0	0	0
2	B	2	0	0	0	0
2	C	2	0	0	0	0
2	D	2	0	0	0	0
3	A	1	0	0	0	0
4	A	4	0	6	0	0
4	B	8	0	12	1	0
4	C	8	0	12	0	0
5	C	15	0	0	0	0
5	D	15	0	0	0	0
6	A	70	0	0	1	0
6	B	69	0	0	1	0
6	C	74	0	0	3	0
6	D	37	0	0	1	0
All	All	6071	0	5566	35	0

The all-atom clashscore is defined as the number of clashes found per 1000 atoms (including hydrogen atoms). The all-atom clashscore for this structure is 3.

All (35) close contacts within the same asymmetric unit are listed below, sorted by their clash magnitude.

Atom-1	Atom-2	Interatomic distance (Å)	Clash overlap (Å)
1:C:125:GLU:OE1	6:C:401:HOH:O	1.91	0.89
1:D:120:LYS:H	1:D:155:ASN:HD21	1.33	0.76
1:A:104:THR:HG23	1:A:107:ALA:H	1.50	0.73
1:B:92:ILE:HD11	1:B:191:LEU:HD13	1.71	0.72
6:C:401:HOH:O	1:D:206:HIS:HE1	1.75	0.70
1:A:203:ALA:HB3	1:B:203:ALA:HB3	1.74	0.68
1:C:104:THR:HG23	1:C:107:ALA:H	1.61	0.66
1:C:206:HIS:HD2	1:D:200:TYR:OH	1.80	0.64
1:D:104:THR:HG23	1:D:107:ALA:H	1.63	0.64
1:C:200:TYR:OH	1:D:206:HIS:HD2	1.80	0.63
1:B:104:THR:HG23	1:B:107:ALA:H	1.66	0.61
1:C:179:LEU:HD11	1:C:198:TYR:CZ	2.36	0.60
1:C:203:ALA:HB3	1:D:203:ALA:HB3	1.84	0.59

*Continued on next page...*

Continued from previous page...

Atom-1	Atom-2	Interatomic distance (Å)	Clash overlap (Å)
1:A:71:THR:HG23	1:A:151:ASP:OD2	2.03	0.58
1:C:203:ALA:HB2	1:D:200:TYR:CD1	2.45	0.52
1:C:15:GLN:N	6:C:403:HOH:O	2.42	0.51
1:D:194:ASP:OD1	1:D:196[A]:ARG:HD3	2.11	0.50
1:C:200:TYR:OH	1:D:206:HIS:CD2	2.65	0.50
1:C:194:ASP:OD2	1:C:196:ARG:NH2	2.46	0.49
1:C:200:TYR:CD1	1:D:203:ALA:HB2	2.48	0.49
1:A:206:HIS:HD2	1:B:200:TYR:OH	1.97	0.48
1:C:58:THR:CB	1:C:142:HIS:NE2	2.78	0.47
1:A:206:HIS:HE1	1:B:125:GLU:OE1	1.99	0.46
1:C:30:LYS:HE3	1:C:52:THR:HG22	1.98	0.46
1:D:180:GLN:CB	6:D:429:HOH:O	2.64	0.45
1:D:194:ASP:OD1	1:D:196[B]:ARG:HB2	2.16	0.45
1:A:179:LEU:HD23	1:A:205:LYS:HD2	1.99	0.44
1:A:200:TYR:CD1	1:B:203:ALA:HB2	2.51	0.44
1:B:38:ASP:C	1:B:38:ASP:OD1	2.56	0.44
4:B:301:EDO:C2	6:B:405:HOH:O	2.64	0.43
1:D:149:ASN:C	1:D:149:ASN:HD22	2.23	0.42
1:B:58:THR:CB	1:B:142:HIS:NE2	2.83	0.41
1:A:70:ARG:HG3	1:A:150:GLY:HA3	2.03	0.41
1:A:70:ARG:HD3	6:A:425:HOH:O	2.21	0.40
1:D:49:VAL:O	1:D:137:SER:HA	2.22	0.40

There are no symmetry-related clashes.

## 5.3 Torsion angles [i](#)

### 5.3.1 Protein backbone [i](#)

In the following table, the Percentiles column shows the percent Ramachandran outliers of the chain as a percentile score with respect to all X-ray entries followed by that with respect to entries of similar resolution.

The Analysed column shows the number of residues for which the backbone conformation was analysed, and the total number of residues.

Mol	Chain	Analysed	Favoured	Allowed	Outliers	Percentiles
1	A	192/209 (92%)	186 (97%)	5 (3%)	1 (0%)	31 14
1	B	190/209 (91%)	185 (97%)	4 (2%)	1 (0%)	31 14
1	C	188/209 (90%)	184 (98%)	3 (2%)	1 (0%)	31 14

Continued on next page...

Continued from previous page...

Mol	Chain	Analysed	Favoured	Allowed	Outliers	Percentiles	
1	D	187/209 (90%)	180 (96%)	7 (4%)	0	100	100
All	All	757/836 (91%)	735 (97%)	19 (2%)	3 (0%)	36	19

All (3) Ramachandran outliers are listed below:

Mol	Chain	Res	Type
1	A	66	PRO
1	B	66	PRO
1	C	66	PRO

### 5.3.2 Protein sidechains [i](#)

In the following table, the Percentiles column shows the percent sidechain outliers of the chain as a percentile score with respect to all X-ray entries followed by that with respect to entries of similar resolution.

The Analysed column shows the number of residues for which the sidechain conformation was analysed, and the total number of residues.

Mol	Chain	Analysed	Rotameric	Outliers	Percentiles	
1	A	151/179 (84%)	148 (98%)	3 (2%)	58	39
1	B	154/179 (86%)	151 (98%)	3 (2%)	60	41
1	C	142/179 (79%)	138 (97%)	4 (3%)	47	25
1	D	150/179 (84%)	147 (98%)	3 (2%)	58	39
All	All	597/716 (83%)	584 (98%)	13 (2%)	55	35

All (13) residues with a non-rotameric sidechain are listed below:

Mol	Chain	Res	Type
1	A	14	LYS
1	A	38	ASP
1	A	191	LEU
1	B	31	LEU
1	B	38	ASP
1	B	43	THR
1	C	31	LEU
1	C	66	PRO
1	C	71	THR
1	C	136	LEU
1	D	43	THR

Continued on next page...

*Continued from previous page...*

Mol	Chain	Res	Type
1	D	72	LEU
1	D	149	ASN

Some sidechains can be flipped to improve hydrogen bonding and reduce clashes. All (8) such sidechains are listed below:

Mol	Chain	Res	Type
1	A	73	HIS
1	A	206	HIS
1	B	73	HIS
1	B	206	HIS
1	C	206	HIS
1	D	149	ASN
1	D	155	ASN
1	D	206	HIS

### 5.3.3 RNA [i](#)

There are no RNA molecules in this entry.

## 5.4 Non-standard residues in protein, DNA, RNA chains [i](#)

There are no non-standard protein/DNA/RNA residues in this entry.

## 5.5 Carbohydrates [i](#)

There are no carbohydrates in this entry.

## 5.6 Ligand geometry [i](#)

Of 16 ligands modelled in this entry, 9 are monoatomic - leaving 7 for Mogul analysis.

In the following table, the Counts columns list the number of bonds (or angles) for which Mogul statistics could be retrieved, the number of bonds (or angles) that are observed in the model and the number of bonds (or angles) that are defined in the Chemical Component Dictionary. The Link column lists molecule types, if any, to which the group is linked. The Z score for a bond length (or angle) is the number of standard deviations the observed value is removed from the expected value. A bond length (or angle) with  $|Z| > 2$  is considered an outlier worth inspection. RMSZ is the root-mean-square of all Z scores of the bond lengths (or angles).

Mol	Type	Chain	Res	Link	Bond lengths			Bond angles		
					Counts	RMSZ	# Z  > 2	Counts	RMSZ	# Z  > 2
4	EDO	A	304	-	3,3,3	0.64	0	2,2,2	0.42	0
4	EDO	B	301	-	3,3,3	0.72	0	2,2,2	0.37	0
4	EDO	B	304	-	3,3,3	0.50	0	2,2,2	0.28	0
4	EDO	C	301	-	3,3,3	0.74	0	2,2,2	0.35	0
5	6SU	C	304	-	15,15,15	2.23	7 (46%)	21,21,21	3.31	4 (19%)
4	EDO	C	305	-	3,3,3	0.44	0	2,2,2	0.49	0
5	6SU	D	303	-	15,15,15	2.52	5 (33%)	21,21,21	2.41	6 (28%)

In the following table, the Chirals column lists the number of chiral outliers, the number of chiral centers analysed, the number of these observed in the model and the number defined in the Chemical Component Dictionary. Similar counts are reported in the Torsion and Rings columns. '-' means no outliers of that kind were identified.

Mol	Type	Chain	Res	Link	Chirals	Torsions	Rings
4	EDO	A	304	-	-	0/1/1/1	0/0/0/0
4	EDO	B	301	-	-	0/1/1/1	0/0/0/0
4	EDO	B	304	-	-	0/1/1/1	0/0/0/0
4	EDO	C	301	-	-	0/1/1/1	0/0/0/0
5	6SU	C	304	-	-	0/11/11/11	0/1/1/1
4	EDO	C	305	-	-	0/1/1/1	0/0/0/0
5	6SU	D	303	-	-	0/11/11/11	0/1/1/1

All (12) bond length outliers are listed below:

Mol	Chain	Res	Type	Atoms	Z	Observed(Å)	Ideal(Å)
5	C	304	6SU	C8-S	-2.24	1.69	1.75
5	C	304	6SU	C2-C1	2.06	1.54	1.49
5	D	303	6SU	C6-N	2.07	1.46	1.43
5	C	304	6SU	C3-C2	2.28	1.43	1.39
5	C	304	6SU	C7-C6	2.76	1.44	1.39
5	D	303	6SU	C5-C6	2.89	1.44	1.39
5	D	303	6SU	O-C1	3.02	1.40	1.33
5	C	304	6SU	C7-C2	3.26	1.44	1.39
5	C	304	6SU	O-C1	3.58	1.41	1.33
5	D	303	6SU	C7-C6	3.63	1.45	1.39
5	C	304	6SU	S-N	4.37	1.69	1.63
5	D	303	6SU	S-N	6.66	1.72	1.63

All (10) bond angle outliers are listed below:

Mol	Chain	Res	Type	Atoms	Z	Observed(°)	Ideal(°)
5	C	304	6SU	O-C1-O1	-7.20	108.97	123.45

*Continued on next page...*

*Continued from previous page...*

Mol	Chain	Res	Type	Atoms	Z	Observed(°)	Ideal(°)
5	D	303	6SU	C8-S-N	-6.89	98.46	106.66
5	D	303	6SU	O-C1-O1	-3.59	116.23	123.45
5	C	304	6SU	C8-S-N	-2.96	103.14	106.66
5	D	303	6SU	C6-N-S	2.07	130.10	123.83
5	D	303	6SU	O2-S-N	2.46	112.17	107.12
5	D	303	6SU	C-O-C1	4.13	123.87	115.84
5	D	303	6SU	O-C1-C2	4.54	119.49	112.34
5	C	304	6SU	C-O-C1	5.80	127.13	115.84
5	C	304	6SU	O-C1-C2	11.09	129.77	112.34

There are no chirality outliers.

There are no torsion outliers.

There are no ring outliers.

1 monomer is involved in 1 short contact:

Mol	Chain	Res	Type	Clashes	Symm-Clashes
4	B	301	EDO	1	0

## 5.7 Other polymers [i](#)

There are no such residues in this entry.

## 5.8 Polymer linkage issues [i](#)

There are no chain breaks in this entry.

## 6 Fit of model and data [i](#)

### 6.1 Protein, DNA and RNA chains [i](#)

In the following table, the column labelled ‘#RSRZ > 2’ contains the number (and percentage) of RSRZ outliers, followed by percent RSRZ outliers for the chain as percentile scores relative to all X-ray entries and entries of similar resolution. The OWAB column contains the minimum, median, 95<sup>th</sup> percentile and maximum values of the occupancy-weighted average B-factor per residue. The column labelled ‘Q < 0.9’ lists the number of (and percentage) of residues with an average occupancy less than 0.9.

Mol	Chain	Analysed	<RSRZ>	#RSRZ>2	OWAB(Å <sup>2</sup> )	Q<0.9
1	A	194/209 (92%)	-0.32	3 (1%) 73 78	19, 30, 58, 73	0
1	B	194/209 (92%)	-0.30	1 (0%) 90 93	20, 33, 61, 74	1 (0%)
1	C	192/209 (91%)	-0.30	2 (1%) 82 86	20, 35, 60, 70	5 (2%)
1	D	190/209 (90%)	-0.05	6 (3%) 47 52	21, 37, 62, 76	19 (10%)
All	All	770/836 (92%)	-0.24	12 (1%) 72 77	19, 34, 60, 76	25 (3%)

All (12) RSRZ outliers are listed below:

Mol	Chain	Res	Type	RSRZ
1	D	16	TYR	4.9
1	B	208	ASN	4.4
1	D	14	LYS	3.9
1	D	153	ALA	3.5
1	A	164	ASP	3.1
1	A	58	THR	3.0
1	D	156	ALA	2.9
1	C	18	ILE	2.9
1	D	40	THR	2.5
1	A	56	GLU	2.4
1	D	154	GLU	2.4
1	C	58	THR	2.1

### 6.2 Non-standard residues in protein, DNA, RNA chains [i](#)

There are no non-standard protein/DNA/RNA residues in this entry.

### 6.3 Carbohydrates [i](#)

There are no carbohydrates in this entry.

## 6.4 Ligands [i](#)

In the following table, the Atoms column lists the number of modelled atoms in the group and the number defined in the chemical component dictionary. The B-factors column lists the minimum, median, 95<sup>th</sup> percentile and maximum values of B factors of atoms in the group. The column labelled 'Q< 0.9' lists the number of atoms with occupancy less than 0.9.

Mol	Type	Chain	Res	Atoms	RSCC	RSR	B-factors(Å <sup>2</sup> )	Q<0.9
5	6SU	C	304	15/15	0.68	0.23	65,78,106,106	15
5	6SU	D	303	15/15	0.75	0.17	45,58,83,84	15
2	MG	B	303	1/1	0.81	0.08	73,73,73,73	0
3	CL	A	303	1/1	0.81	0.08	67,67,67,67	0
4	EDO	C	301	4/4	0.86	0.09	34,46,48,54	0
4	EDO	B	301	4/4	0.89	0.11	40,44,48,49	0
4	EDO	C	305	4/4	0.91	0.08	40,40,41,43	0
4	EDO	A	304	4/4	0.94	0.06	29,31,31,33	0
2	MG	C	302	1/1	0.96	0.06	46,46,46,46	0
2	MG	A	302	1/1	0.96	0.13	59,59,59,59	0
4	EDO	B	304	4/4	0.96	0.05	35,36,38,38	0
2	MG	C	303	1/1	0.97	0.02	31,31,31,31	0
2	MG	A	301	1/1	0.97	0.04	29,29,29,29	0
2	MG	D	302	1/1	0.98	0.06	39,39,39,39	0
2	MG	D	301	1/1	0.99	0.03	35,35,35,35	0
2	MG	B	302	1/1	0.99	0.02	31,31,31,31	0

## 6.5 Other polymers [i](#)

There are no such residues in this entry.