



Full wwPDB X-ray Structure Validation Report ⓘ

Mar 8, 2018 – 05:17 pm GMT

PDB ID : 2QLY
Title : Crystal Structure of the N-terminal Subunit of Human Maltase-Glucoamylase
Authors : Sim, L.; Rose, D.R.
Deposited on : 2007-07-13
Resolution : 2.00 Å(reported)

This is a Full wwPDB X-ray Structure Validation Report for a publicly released PDB entry.

We welcome your comments at validation@mail.wwpdb.org

A user guide is available at

<https://www.wwpdb.org/validation/2017/XrayValidationReportHelp>

with specific help available everywhere you see the ⓘ symbol.

The following versions of software and data (see [references ⓘ](#)) were used in the production of this report:

MolProbity : 4.02b-467
Mogul : 1.7.3 (157068), CSD as539be (2018)
Xtrriage (Phenix) : 1.13
EDS : trunk30967
Percentile statistics : 20171227.v01 (using entries in the PDB archive December 27th 2017)
Refmac : 5.8.0158
CCP4 : 7.0 (Gargrove)
Ideal geometry (proteins) : Engh & Huber (2001)
Ideal geometry (DNA, RNA) : Parkinson et al. (1996)
Validation Pipeline (wwPDB-VP) : trunk30967

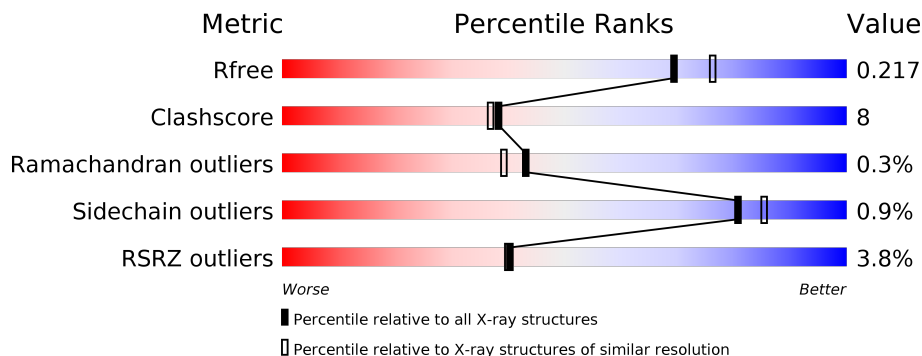
1 Overall quality at a glance

The following experimental techniques were used to determine the structure:

X-RAY DIFFRACTION

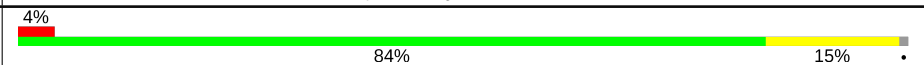
The reported resolution of this entry is 2.00 Å.

Percentile scores (ranging between 0-100) for global validation metrics of the entry are shown in the following graphic. The table shows the number of entries on which the scores are based.



Metric	Whole archive (#Entries)	Similar resolution (#Entries, resolution range(Å))
R_{free}	111664	7193 (2.00-2.00)
Clashscore	122126	8267 (2.00-2.00)
Ramachandran outliers	120053	8166 (2.00-2.00)
Sidechain outliers	120020	8165 (2.00-2.00)
RSRZ outliers	108989	7011 (2.00-2.00)

The table below summarises the geometric issues observed across the polymeric chains and their fit to the electron density. The red, orange, yellow and green segments on the lower bar indicate the fraction of residues that contain outliers for ≥ 3 , 2, 1 and 0 types of geometric quality criteria. A grey segment represents the fraction of residues that are not modelled. The numeric value for each fraction is indicated below the corresponding segment, with a dot representing fractions $\leq 5\%$. The upper red bar (where present) indicates the fraction of residues that have poor fit to the electron density. The numeric value is given above the bar.

Mol	Chain	Length	Quality of chain
1	A	870	

The following table lists non-polymeric compounds, carbohydrate monomers and non-standard residues in protein, DNA, RNA chains that are outliers for geometric or electron-density-fit criteria:

Mol	Type	Chain	Res	Chirality	Geometry	Clashes	Electron density
2	NAG	A	2001	X	-	-	-

2 Entry composition [i](#)

There are 4 unique types of molecules in this entry. The entry contains 7658 atoms, of which 0 are hydrogens and 0 are deuteriums.

In the tables below, the ZeroOcc column contains the number of atoms modelled with zero occupancy, the AltConf column contains the number of residues with at least one atom in alternate conformation and the Trace column contains the number of residues modelled with at most 2 atoms.

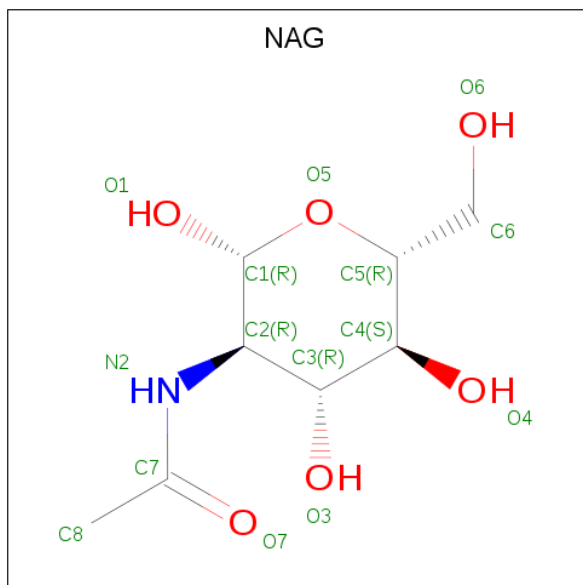
- Molecule 1 is a protein called Maltase-glucoamylase, intestinal.

Mol	Chain	Residues	Atoms					ZeroOcc	AltConf	Trace
			Total	C	N	O	S			
1	A	863	6957	4437	1179	1314	27	0	7	0

There are 2 discrepancies between the modelled and reference sequences:

Chain	Residue	Modelled	Actual	Comment	Reference
A	869	ALA	-	EXPRESSION TAG	UNP O43451
A	870	HIS	-	EXPRESSION TAG	UNP O43451

- Molecule 2 is N-ACETYL-D-GLUCOSAMINE (three-letter code: NAG) (formula: $C_8H_{15}NO_6$).



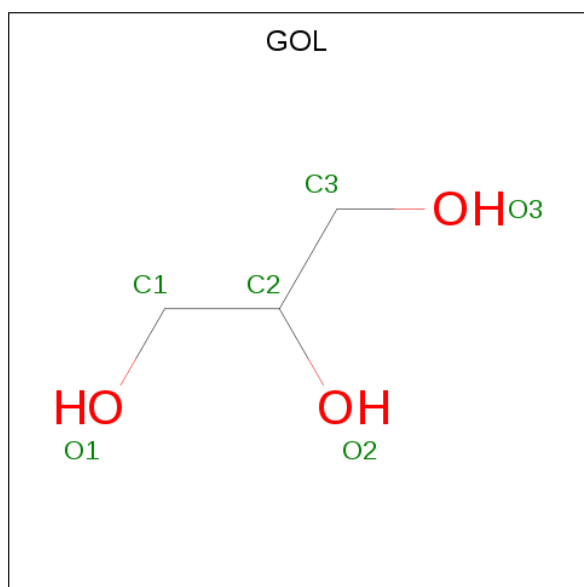
Mol	Chain	Residues	Atoms				ZeroOcc	AltConf
			Total	C	N	O		
2	A	1	14	8	1	5	0	0
2	A	1	14	8	1	5	0	0

Continued on next page...

Continued from previous page...

Mol	Chain	Residues	Atoms				ZeroOcc	AltConf
2	A	1	Total	C	N	O	0	0
			14	8	1	5		
2	A	1	Total	C	N	O	0	0
			14	8	1	5		
2	A	1	Total	C	N	O	0	0
			14	8	1	5		

- Molecule 3 is GLYCEROL (three-letter code: GOL) (formula: $C_3H_8O_3$).



Mol	Chain	Residues	Atoms			ZeroOcc	AltConf
3	A	1	Total	C	O	0	0
			6	3	3		
3	A	1	Total	C	O	0	0
			6	3	3		
3	A	1	Total	C	O	0	0
			6	3	3		
3	A	1	Total	C	O	0	0
			6	3	3		
3	A	1	Total	C	O	0	0
			6	3	3		
3	A	1	Total	C	O	0	0
			6	3	3		
3	A	1	Total	C	O	0	0
			6	3	3		

Continued on next page...

Continued from previous page...

Mol	Chain	Residues	Atoms			ZeroOcc	AltConf
3	A	1	Total	C	O	0	0
			6	3	3		
3	A	1	Total	C	O	0	0
			6	3	3		
3	A	1	Total	C	O	0	0
			6	3	3		

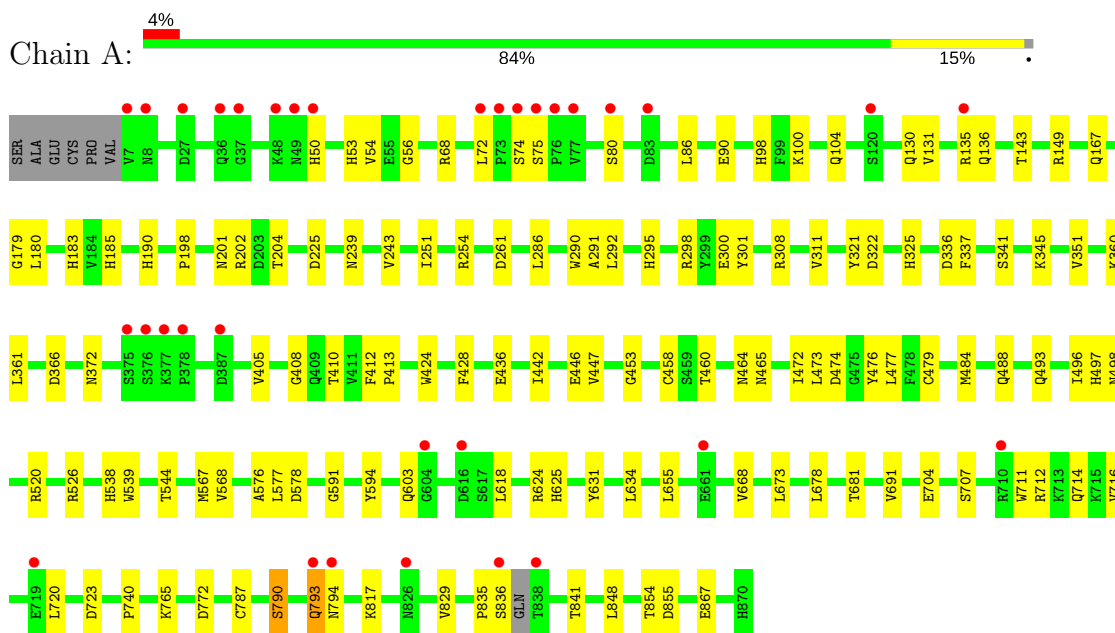
- Molecule 4 is water.

Mol	Chain	Residues	Atoms		ZeroOcc	AltConf
4	A	565	Total	O	0	0
			565	565		

3 Residue-property plots [i](#)

These plots are drawn for all protein, RNA and DNA chains in the entry. The first graphic for a chain summarises the proportions of the various outlier classes displayed in the second graphic. The second graphic shows the sequence view annotated by issues in geometry and electron density. Residues are color-coded according to the number of geometric quality criteria for which they contain at least one outlier: green = 0, yellow = 1, orange = 2 and red = 3 or more. A red dot above a residue indicates a poor fit to the electron density ($RSRZ > 2$). Stretches of 2 or more consecutive residues without any outlier are shown as a green connector. Residues present in the sample, but not in the model, are shown in grey.

- Molecule 1: Maltase-glucoamylase, intestinal



4 Data and refinement statistics i

Property	Value	Source
Space group	P 21 21 21	Depositor
Cell constants a, b, c, α , β , γ	93.17Å 107.64Å 111.97Å 90.00° 90.00° 90.00°	Depositor
Resolution (Å)	19.88 – 2.00 10.50 – 2.00	Depositor EDS
% Data completeness (in resolution range)	100.0 (19.88-2.00) 99.7 (10.50-2.00)	Depositor EDS
R_{merge}	(Not available)	Depositor
R_{sym}	0.08	Depositor
$\langle I/\sigma(I) \rangle$ ¹	4.03 (at 2.00Å)	Xtrriage
Refinement program	REFMAC 5.2.0019	Depositor
R, R_{free}	0.178 , 0.224 0.174 , 0.217	Depositor DCC
R_{free} test set	3813 reflections (5.03%)	wwPDB-VP
Wilson B-factor (Å ²)	30.5	Xtrriage
Anisotropy	0.057	Xtrriage
Bulk solvent k_{sol} (e/Å ³), B_{sol} (Å ²)	0.42 , 57.7	EDS
L-test for twinning ²	$\langle L \rangle = 0.49$, $\langle L^2 \rangle = 0.32$	Xtrriage
Estimated twinning fraction	0.016 for -h,l,k	Xtrriage
F_o, F_c correlation	0.96	EDS
Total number of atoms	7658	wwPDB-VP
Average B, all atoms (Å ²)	31.0	wwPDB-VP

Xtrriage's analysis on translational NCS is as follows: *The largest off-origin peak in the Patterson function is 4.22% of the height of the origin peak. No significant pseudotranslation is detected.*

¹Intensities estimated from amplitudes.

²Theoretical values of $\langle |L| \rangle$, $\langle L^2 \rangle$ for acentric reflections are 0.5, 0.333 respectively for untwinned datasets, and 0.375, 0.2 for perfectly twinned datasets.

5 Model quality [i](#)

5.1 Standard geometry [i](#)

Bond lengths and bond angles in the following residue types are not validated in this section: GOL, NAG

The Z score for a bond length (or angle) is the number of standard deviations the observed value is removed from the expected value. A bond length (or angle) with $|Z| > 5$ is considered an outlier worth inspection. RMSZ is the root-mean-square of all Z scores of the bond lengths (or angles).

Mol	Chain	Bond lengths		Bond angles	
		RMSZ	# $ Z > 5$	RMSZ	# $ Z > 5$
1	A	0.84	1/7175 (0.0%)	0.82	4/9785 (0.0%)

Chiral center outliers are detected by calculating the chiral volume of a chiral center and verifying if the center is modelled as a planar moiety or with the opposite hand. A planarity outlier is detected by checking planarity of atoms in a peptide group, atoms in a mainchain group or atoms of a sidechain that are expected to be planar.

Mol	Chain	#Chirality outliers	#Planarity outliers
1	A	0	1

All (1) bond length outliers are listed below:

Mol	Chain	Res	Type	Atoms	Z	Observed(Å)	Ideal(Å)
1	A	787	CYS	CB-SG	-6.97	1.70	1.82

All (4) bond angle outliers are listed below:

Mol	Chain	Res	Type	Atoms	Z	Observed(°)	Ideal(°)
1	A	624	ARG	NE-CZ-NH2	-9.50	115.55	120.30
1	A	624	ARG	NE-CZ-NH1	7.19	123.89	120.30
1	A	578	ASP	CB-CG-OD2	-5.84	113.04	118.30
1	A	578	ASP	CB-CG-OD1	5.41	123.17	118.30

There are no chirality outliers.

All (1) planarity outliers are listed below:

Mol	Chain	Res	Type	Group
1	A	50	HIS	Peptide

5.2 Too-close contacts

In the following table, the Non-H and H(model) columns list the number of non-hydrogen atoms and hydrogen atoms in the chain respectively. The H(added) column lists the number of hydrogen atoms added and optimized by MolProbity. The Clashes column lists the number of clashes within the asymmetric unit, whereas Symm-Clashes lists symmetry related clashes.

Mol	Chain	Non-H	H(model)	H(added)	Clashes	Symm-Clashes
1	A	6957	0	6632	112	0
2	A	70	0	63	1	0
3	A	66	0	88	2	0
4	A	565	0	0	17	0
All	All	7658	0	6783	114	0

The all-atom clashscore is defined as the number of clashes found per 1000 atoms (including hydrogen atoms). The all-atom clashscore for this structure is 8.

All (114) close contacts within the same asymmetric unit are listed below, sorted by their clash magnitude.

Atom-1	Atom-2	Interatomic distance (Å)	Clash overlap (Å)
1:A:98:HIS:HE1	1:A:261:ASP:OD1	1.47	0.97
1:A:360:LYS:HE2	4:A:3530:HOH:O	1.67	0.93
1:A:204:THR:HG21	1:A:473:LEU:HD23	1.63	0.80
1:A:98:HIS:CE1	1:A:261:ASP:OD1	2.35	0.79
1:A:54:VAL:HB	1:A:135:ARG:HB3	1.65	0.79
1:A:202[B]:ARG:HG3	1:A:204:THR:HG23	1.66	0.78
1:A:204:THR:HG21	1:A:473:LEU:CD2	2.14	0.77
1:A:204:THR:CG2	1:A:473:LEU:HD23	2.15	0.76
1:A:201:ASN:O	1:A:497:HIS:HE1	1.68	0.76
1:A:308:ARG:NH2	4:A:3540:HOH:O	2.20	0.75
1:A:292:LEU:HD23	1:A:567:MET:CE	2.16	0.75
1:A:476[B]:TYR:HB2	1:A:479[B]:CYS:SG	2.27	0.74
1:A:691:VAL:HG12	1:A:720:LEU:HD12	1.70	0.74
1:A:817:LYS:HE3	4:A:3572:HOH:O	1.88	0.73
1:A:202[A]:ARG:HD3	1:A:204:THR:HG23	1.69	0.72
1:A:202[A]:ARG:HD3	1:A:204:THR:CG2	2.24	0.68
1:A:179:GLY:O	1:A:190:HIS:HE1	1.77	0.68
1:A:829:VAL:O	1:A:836:SER:HB2	1.94	0.68
1:A:53:HIS:HD2	1:A:72:LEU:CD2	2.08	0.67
1:A:464:ASN:HD21	1:A:484:MET:H	1.41	0.67
1:A:201:ASN:H	1:A:498:ASN:ND2	1.93	0.67
1:A:143:THR:HG23	4:A:3102:HOH:O	1.96	0.65
1:A:53:HIS:HD2	1:A:72:LEU:HD22	1.62	0.64

Continued on next page...

Continued from previous page...

Atom-1	Atom-2	Interatomic distance (Å)	Clash overlap (Å)
1:A:835:PRO:HA	1:A:836:SER:HB2	1.80	0.63
1:A:291:ALA:O	1:A:295:HIS:HE1	1.82	0.63
1:A:68:ARG:HE	1:A:104:GLN:HE22	1.46	0.63
1:A:201:ASN:H	1:A:498:ASN:HD21	1.44	0.62
2:A:2002:NAG:H83	4:A:3477:HOH:O	1.99	0.62
1:A:576:ALA:O	1:A:577:LEU:HB2	1.99	0.62
1:A:204:THR:CG2	1:A:473:LEU:CD2	2.75	0.61
1:A:202[A]:ARG:CD	1:A:204:THR:HG23	2.30	0.61
1:A:295:HIS:HD2	1:A:325:HIS:NE2	1.98	0.61
1:A:625:HIS:HE1	1:A:704:GLU:OE2	1.82	0.60
1:A:464:ASN:ND2	1:A:484:MET:H	1.99	0.59
1:A:712:ARG:H	1:A:714:GLN:HE21	1.47	0.59
1:A:493:GLN:HE21	1:A:497:HIS:HD2	1.48	0.59
1:A:618:LEU:HD11	1:A:723:ASP:HB3	1.82	0.59
1:A:183:HIS:HD2	1:A:185:HIS:NE2	2.01	0.58
1:A:366:ASP:HB3	4:A:3432:HOH:O	2.04	0.57
1:A:691:VAL:CG1	1:A:720:LEU:HD12	2.34	0.56
1:A:183:HIS:HE1	1:A:198:PRO:O	1.89	0.55
1:A:167:GLN:NE2	1:A:254:ARG:HE	2.05	0.55
1:A:90:GLU:OE1	1:A:98:HIS:HD2	1.91	0.54
1:A:201:ASN:O	1:A:497:HIS:CE1	2.56	0.54
1:A:292:LEU:HD23	1:A:567:MET:HE1	1.89	0.53
1:A:591:GLY:HA2	1:A:594:TYR:CD2	2.43	0.53
1:A:460:THR:HA	1:A:465:ASN:ND2	2.23	0.53
1:A:202[A]:ARG:NH2	1:A:474:ASP:OD2	2.41	0.53
1:A:56:GLY:O	1:A:135:ARG:NH2	2.41	0.53
1:A:446:GLU:N	1:A:447:VAL:HA	2.24	0.52
1:A:360:LYS:CE	4:A:3530:HOH:O	2.42	0.52
1:A:436:GLU:HG2	4:A:3555:HOH:O	2.09	0.52
1:A:372:ASN:ND2	4:A:3424:HOH:O	2.41	0.51
1:A:408:GLY:O	1:A:410:THR:HG23	2.11	0.50
1:A:167:GLN:HE21	1:A:254:ARG:HG3	1.76	0.50
1:A:86:LEU:HB2	1:A:104:GLN:HG2	1.94	0.49
1:A:149:ARG:NH2	1:A:225:ASP:OD2	2.46	0.49
1:A:300:GLU:HG3	1:A:603:GLN:NE2	2.28	0.49
1:A:53:HIS:CD2	1:A:72:LEU:HD22	2.45	0.49
1:A:488:GLN:HB2	1:A:496:ILE:HD11	1.95	0.49
1:A:544:THR:CG2	1:A:577:LEU:HD22	2.43	0.48
1:A:765:LYS:HE2	1:A:790:SER:HB3	1.96	0.48
1:A:453:GLY:HA3	1:A:458:CYS:SG	2.55	0.47
1:A:526:ARG:NH1	4:A:3533:HOH:O	2.44	0.47

Continued on next page...

Continued from previous page...

Atom-1	Atom-2	Interatomic distance (Å)	Clash overlap (Å)
1:A:183:HIS:CD2	1:A:185:HIS:NE2	2.82	0.47
1:A:286:LEU:O	1:A:520:ARG:HD3	2.15	0.46
1:A:202[A]:ARG:CD	1:A:204:THR:CG2	2.92	0.46
1:A:292:LEU:HD23	1:A:567:MET:HE2	1.95	0.46
1:A:712:ARG:H	1:A:714:GLN:NE2	2.13	0.46
1:A:179:GLY:O	1:A:190:HIS:CE1	2.64	0.45
1:A:243:VAL:HG11	1:A:251:ILE:HD11	1.97	0.45
1:A:631:TYR:HA	1:A:634:LEU:HG	1.99	0.45
1:A:655:LEU:HD22	1:A:668:VAL:HG11	1.99	0.45
1:A:135:ARG:HB2	1:A:136:GLN:HE21	1.81	0.45
1:A:493:GLN:NE2	1:A:497:HIS:HD2	2.15	0.45
1:A:673:LEU:HA	1:A:678:LEU:O	2.17	0.45
1:A:204:THR:HG21	1:A:473:LEU:HD22	1.95	0.44
1:A:298:ARG:HG2	1:A:301:TYR:CZ	2.52	0.44
1:A:740:PRO:HG2	3:A:3005:GOL:H11	2.00	0.44
1:A:351:VAL:HG22	1:A:361:LEU:HD22	1.98	0.44
1:A:772:ASP:OD1	1:A:772:ASP:C	2.56	0.44
1:A:53:HIS:CD2	1:A:72:LEU:CD2	2.95	0.44
1:A:372:ASN:ND2	4:A:3423:HOH:O	2.51	0.44
1:A:829:VAL:O	1:A:836:SER:CB	2.64	0.44
1:A:202[A]:ARG:NE	1:A:204:THR:CG2	2.81	0.43
1:A:295:HIS:CD2	1:A:325:HIS:NE2	2.83	0.43
1:A:202[A]:ARG:NE	1:A:204:THR:HG23	2.33	0.43
1:A:336:ASP:HB3	1:A:337:PHE:CD2	2.52	0.43
1:A:526:ARG:O	1:A:538:HIS:CE1	2.71	0.43
1:A:538:HIS:O	1:A:568:VAL:HA	2.19	0.43
1:A:311:VAL:HG22	1:A:321:TYR:OH	2.18	0.43
1:A:793:GLN:O	1:A:794:ASN:HB2	2.19	0.43
1:A:841:THR:H	1:A:855:ASP:HB3	1.84	0.42
3:A:3010:GOL:H32	4:A:3535:HOH:O	2.17	0.42
1:A:472:ILE:HD13	1:A:477:LEU:HD23	2.01	0.42
1:A:130:GLN:HG2	1:A:131:VAL:N	2.35	0.42
1:A:243:VAL:CG1	1:A:251:ILE:HD11	2.49	0.42
1:A:711:TRP:CG	1:A:716:VAL:HG11	2.55	0.42
1:A:100:LYS:HD2	4:A:3565:HOH:O	2.20	0.42
1:A:190:HIS:HD2	4:A:3241:HOH:O	2.03	0.42
1:A:817:LYS:CE	4:A:3572:HOH:O	2.60	0.42
1:A:412:PHE:HA	1:A:413:PRO:HD3	1.87	0.42
1:A:681:THR:HG22	1:A:691:VAL:HG11	2.02	0.41
1:A:239:ASN:ND2	4:A:3067:HOH:O	2.53	0.41
1:A:341:SER:O	1:A:345:LYS:HB2	2.21	0.41

Continued on next page...

Continued from previous page...

Atom-1	Atom-2	Interatomic distance (Å)	Clash overlap (Å)
1:A:204:THR:HG22	1:A:473:LEU:HD23	1.99	0.41
1:A:442:ILE:HG21	1:A:442:ILE:HD13	1.89	0.41
1:A:292:LEU:CD2	1:A:567:MET:CE	2.95	0.41
1:A:300:GLU:HG3	1:A:603:GLN:HE21	1.85	0.41
1:A:424:TRP:CE2	1:A:428:PHE:HE2	2.39	0.41
1:A:707:SER:HB3	1:A:848:LEU:HG	2.03	0.41
1:A:794:ASN:O	1:A:867:GLU:HA	2.21	0.41
1:A:202[A]:ARG:HD2	4:A:3468:HOH:O	2.21	0.40
1:A:290:TRP:CD2	1:A:360:LYS:HG3	2.56	0.40

There are no symmetry-related clashes.

5.3 Torsion angles [i](#)

5.3.1 Protein backbone [i](#)

In the following table, the Percentiles column shows the percent Ramachandran outliers of the chain as a percentile score with respect to all X-ray entries followed by that with respect to entries of similar resolution.

The Analysed column shows the number of residues for which the backbone conformation was analysed, and the total number of residues.

Mol	Chain	Analysed	Favoured	Allowed	Outliers	Percentiles
1	A	866/870 (100%)	823 (95%)	40 (5%)	3 (0%)	43 39

All (3) Ramachandran outliers are listed below:

Mol	Chain	Res	Type
1	A	793	GLN
1	A	180	LEU
1	A	405	VAL

5.3.2 Protein sidechains [i](#)

In the following table, the Percentiles column shows the percent sidechain outliers of the chain as a percentile score with respect to all X-ray entries followed by that with respect to entries of similar resolution.

The Analysed column shows the number of residues for which the sidechain conformation was analysed, and the total number of residues.

Mol	Chain	Analysed	Rotameric	Outliers	Percentiles
1	A	763/762 (100%)	756 (99%)	7 (1%)	81 85

All (7) residues with a non-rotameric sidechain are listed below:

Mol	Chain	Res	Type
1	A	74	SER
1	A	75	SER
1	A	80	SER
1	A	322	ASP
1	A	539	TRP
1	A	790	SER
1	A	854	THR

Some sidechains can be flipped to improve hydrogen bonding and reduce clashes. All (24) such sidechains are listed below:

Mol	Chain	Res	Type
1	A	53	HIS
1	A	60	ASN
1	A	62	ASN
1	A	98	HIS
1	A	104	GLN
1	A	107	ASN
1	A	130	GLN
1	A	136	GLN
1	A	164	GLN
1	A	167	GLN
1	A	183	HIS
1	A	190	HIS
1	A	239	ASN
1	A	295	HIS
1	A	357	ASN
1	A	464	ASN
1	A	465	ASN
1	A	497	HIS
1	A	498	ASN
1	A	603	GLN
1	A	625	HIS
1	A	669	HIS
1	A	714	GLN
1	A	802	GLN

5.3.3 RNA [i](#)

There are no RNA molecules in this entry.

5.4 Non-standard residues in protein, DNA, RNA chains [i](#)

There are no non-standard protein/DNA/RNA residues in this entry.

5.5 Carbohydrates [i](#)

There are no carbohydrates in this entry.

5.6 Ligand geometry [i](#)

16 ligands are modelled in this entry.

In the following table, the Counts columns list the number of bonds (or angles) for which Mogul statistics could be retrieved, the number of bonds (or angles) that are observed in the model and the number of bonds (or angles) that are defined in the Chemical Component Dictionary. The Link column lists molecule types, if any, to which the group is linked. The Z score for a bond length (or angle) is the number of standard deviations the observed value is removed from the expected value. A bond length (or angle) with $|Z| > 2$ is considered an outlier worth inspection. RMSZ is the root-mean-square of all Z scores of the bond lengths (or angles).

Mol	Type	Chain	Res	Link	Bond lengths			Bond angles		
					Counts	RMSZ	# Z > 2	Counts	RMSZ	# Z > 2
2	NAG	A	2001	1,2	14,14,15	0.77	0	17,19,21	2.51	3 (17%)
2	NAG	A	2002	2	14,14,15	0.51	0	17,19,21	2.51	7 (41%)
2	NAG	A	2003	1,2	14,14,15	0.63	0	17,19,21	1.45	1 (5%)
2	NAG	A	2004	2	14,14,15	0.63	0	17,19,21	1.56	5 (29%)
2	NAG	A	2005	1	14,14,15	0.70	0	17,19,21	1.56	4 (23%)
3	GOL	A	3001	-	5,5,5	0.30	0	5,5,5	0.28	0
3	GOL	A	3002	-	5,5,5	0.60	0	5,5,5	0.57	0
3	GOL	A	3003	-	5,5,5	0.32	0	5,5,5	0.30	0
3	GOL	A	3004	-	5,5,5	0.36	0	5,5,5	0.29	0
3	GOL	A	3005	-	5,5,5	0.32	0	5,5,5	0.31	0
3	GOL	A	3006	-	5,5,5	0.35	0	5,5,5	0.62	0
3	GOL	A	3007	-	5,5,5	0.41	0	5,5,5	0.63	0
3	GOL	A	3008	-	5,5,5	0.43	0	5,5,5	0.38	0
3	GOL	A	3009	-	5,5,5	0.38	0	5,5,5	0.83	0
3	GOL	A	3010	-	5,5,5	0.29	0	5,5,5	0.32	0
3	GOL	A	3011	-	5,5,5	0.37	0	5,5,5	0.37	0

In the following table, the Chirals column lists the number of chiral outliers, the number of chiral centers analysed, the number of these observed in the model and the number defined in the Chemical Component Dictionary. Similar counts are reported in the Torsion and Rings columns. '-' means no outliers of that kind were identified.

Mol	Type	Chain	Res	Link	Chirals	Torsions	Rings
2	NAG	A	2001	1,2	1/1/5/7	0/6/23/26	0/1/1/1
2	NAG	A	2002	2	-	0/6/23/26	0/1/1/1
2	NAG	A	2003	1,2	-	0/6/23/26	0/1/1/1
2	NAG	A	2004	2	-	0/6/23/26	0/1/1/1
2	NAG	A	2005	1	-	0/6/23/26	0/1/1/1
3	GOL	A	3001	-	-	0/4/4/4	0/0/0/0
3	GOL	A	3002	-	-	0/4/4/4	0/0/0/0
3	GOL	A	3003	-	-	0/4/4/4	0/0/0/0
3	GOL	A	3004	-	-	0/4/4/4	0/0/0/0
3	GOL	A	3005	-	-	0/4/4/4	0/0/0/0
3	GOL	A	3006	-	-	0/4/4/4	0/0/0/0
3	GOL	A	3007	-	-	0/4/4/4	0/0/0/0
3	GOL	A	3008	-	-	0/4/4/4	0/0/0/0
3	GOL	A	3009	-	-	0/4/4/4	0/0/0/0
3	GOL	A	3010	-	-	0/4/4/4	0/0/0/0
3	GOL	A	3011	-	-	0/4/4/4	0/0/0/0

There are no bond length outliers.

All (20) bond angle outliers are listed below:

Mol	Chain	Res	Type	Atoms	Z	Observed(°)	Ideal(°)
2	A	2003	NAG	O5-C1-C2	-4.59	105.18	111.52
2	A	2002	NAG	C6-C5-C4	-3.04	105.81	112.99
2	A	2005	NAG	C3-C4-C5	-2.92	105.02	110.24
2	A	2002	NAG	O7-C7-C8	-2.55	117.46	122.07
2	A	2004	NAG	O7-C7-C8	-2.51	117.54	122.07
2	A	2004	NAG	C3-C4-C5	-2.11	106.47	110.24
2	A	2002	NAG	C3-C4-C5	2.06	113.93	110.24
2	A	2004	NAG	C1-C2-N2	2.07	114.02	110.49
2	A	2005	NAG	C6-C5-C4	2.09	117.92	112.99
2	A	2004	NAG	O7-C7-N2	2.15	126.00	121.94
2	A	2005	NAG	O7-C7-N2	2.36	126.41	121.94
2	A	2001	NAG	O5-C5-C4	2.43	116.74	110.83
2	A	2002	NAG	C2-N2-C7	2.43	126.49	122.94
2	A	2004	NAG	C2-N2-C7	2.49	126.57	122.94
2	A	2002	NAG	O5-C5-C4	2.65	117.27	110.83
2	A	2005	NAG	C2-N2-C7	2.80	127.02	122.94
2	A	2001	NAG	O5-C5-C6	3.82	113.19	107.15

Continued on next page...

Continued from previous page...

Mol	Chain	Res	Type	Atoms	Z	Observed(°)	Ideal(°)
2	A	2002	NAG	C8-C7-N2	4.01	123.12	116.10
2	A	2002	NAG	C1-O5-C5	7.27	122.19	112.19
2	A	2001	NAG	C1-O5-C5	7.80	122.92	112.19

All (1) chirality outliers are listed below:

Mol	Chain	Res	Type	Atom
2	A	2001	NAG	C5

There are no torsion outliers.

There are no ring outliers.

3 monomers are involved in 3 short contacts:

Mol	Chain	Res	Type	Clashes	Symm-Clashes
2	A	2002	NAG	1	0
3	A	3005	GOL	1	0
3	A	3010	GOL	1	0

5.7 Other polymers [i](#)

There are no such residues in this entry.

5.8 Polymer linkage issues [i](#)

There are no chain breaks in this entry.

6 Fit of model and data

6.1 Protein, DNA and RNA chains

In the following table, the column labelled ‘#RSRZ > 2’ contains the number (and percentage) of RSRZ outliers, followed by percent RSRZ outliers for the chain as percentile scores relative to all X-ray entries and entries of similar resolution. The OWAB column contains the minimum, median, 95th percentile and maximum values of the occupancy-weighted average B-factor per residue. The column labelled ‘Q < 0.9’ lists the number of (and percentage) of residues with an average occupancy less than 0.9.

Mol	Chain	Analysed	<RSRZ>	#RSRZ>2	OWAB(Å ²)	Q<0.9
1	A	863/870 (99%)	-0.23	33 (3%) 40 40	18, 28, 46, 72	0

All (33) RSRZ outliers are listed below:

Mol	Chain	Res	Type	RSRZ
1	A	74	SER	5.6
1	A	838	THR	5.4
1	A	75	SER	5.3
1	A	73	PRO	5.3
1	A	76	PRO	4.9
1	A	80	SER	4.7
1	A	72	LEU	4.3
1	A	710	ARG	4.1
1	A	36	GLN	4.1
1	A	7	VAL	3.5
1	A	826	ASN	3.4
1	A	794	ASN	3.3
1	A	836	SER	3.3
1	A	77	VAL	3.2
1	A	793	GLN	3.1
1	A	83	ASP	3.0
1	A	48	LYS	2.9
1	A	375	SER	2.7
1	A	376	SER	2.6
1	A	37	GLY	2.5
1	A	135	ARG	2.4
1	A	616	ASP	2.4
1	A	719	GLU	2.3
1	A	604	GLY	2.2
1	A	27	ASP	2.2
1	A	49	ASN	2.2
1	A	50	HIS	2.2

Continued on next page...

Continued from previous page...

Mol	Chain	Res	Type	RSRZ
1	A	387	ASP	2.1
1	A	8	ASN	2.1
1	A	661	GLU	2.0
1	A	120	SER	2.0
1	A	377	LYS	2.0
1	A	378	PRO	2.0

6.2 Non-standard residues in protein, DNA, RNA chains [i](#)

There are no non-standard protein/DNA/RNA residues in this entry.

6.3 Carbohydrates [i](#)

There are no carbohydrates in this entry.

6.4 Ligands [i](#)

In the following table, the Atoms column lists the number of modelled atoms in the group and the number defined in the chemical component dictionary. The B-factors column lists the minimum, median, 95th percentile and maximum values of B factors of atoms in the group. The column labelled 'Q< 0.9' lists the number of atoms with occupancy less than 0.9.

Mol	Type	Chain	Res	Atoms	RSCC	RSR	B-factors(Å ²)	Q<0.9
3	GOL	A	3010	6/6	0.64	0.25	63,64,65,67	0
3	GOL	A	3007	6/6	0.68	0.20	54,61,64,65	0
3	GOL	A	3004	6/6	0.69	0.29	79,80,81,81	0
3	GOL	A	3005	6/6	0.73	0.16	73,74,74,75	0
2	NAG	A	2005	14/15	0.79	0.30	49,54,60,63	0
2	NAG	A	2002	14/15	0.84	0.26	49,54,56,58	0
3	GOL	A	3011	6/6	0.85	0.19	73,75,75,76	0
3	GOL	A	3008	6/6	0.90	0.17	44,48,50,51	0
2	NAG	A	2004	14/15	0.92	0.15	50,55,58,58	0
3	GOL	A	3002	6/6	0.92	0.14	36,40,42,43	0
3	GOL	A	3006	6/6	0.92	0.13	45,52,53,54	0
2	NAG	A	2001	14/15	0.93	0.12	27,32,44,47	0
3	GOL	A	3003	6/6	0.94	0.14	46,48,49,49	0
3	GOL	A	3009	6/6	0.95	0.10	27,35,37,40	0
2	NAG	A	2003	14/15	0.95	0.10	37,40,44,45	0
3	GOL	A	3001	6/6	0.97	0.10	31,32,34,35	0

6.5 Other polymers [i](#)

There are no such residues in this entry.