



wwPDB X-ray Structure Validation Summary Report ⓘ

Dec 9, 2023 – 12:37 pm GMT

PDB ID : 1QOT
Title : lectin UEA-II complexed with fucosyllactose and fucosylgalactose
Authors : Loris, R.; De Greve, H.; Dao-Thi, M.-H.; Messens, J.; Imberty, A.; Wyns, L.
Deposited on : 1999-11-16
Resolution : 3.00 Å(reported)

This is a wwPDB X-ray Structure Validation Summary Report for a publicly released PDB entry.

We welcome your comments at validation@mail.wwpdb.org

A user guide is available at

<https://www.wwpdb.org/validation/2017/XrayValidationReportHelp>

with specific help available everywhere you see the ⓘ symbol.

The types of validation reports are described at

<http://www.wwpdb.org/validation/2017/FAQs#types>.

The following versions of software and data (see [references ⓘ](#)) were used in the production of this report:

MolProbity : 4.02b-467
Mogul : 1.8.4, CSD as541be (2020)
Xtriage (Phenix) : 1.13
EDS : 2.36
Percentile statistics : 20191225.v01 (using entries in the PDB archive December 25th 2019)
Refmac : 5.8.0158
CCP4 : 7.0.044 (Gargrove)
Ideal geometry (proteins) : Engh & Huber (2001)
Ideal geometry (DNA, RNA) : Parkinson et al. (1996)
Validation Pipeline (wwPDB-VP) : 2.36

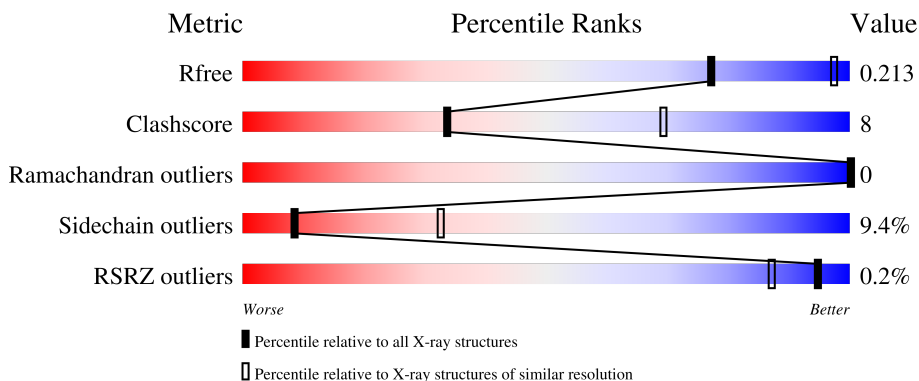
1 Overall quality at a glance

The following experimental techniques were used to determine the structure:

X-RAY DIFFRACTION

The reported resolution of this entry is 3.00 Å.

Percentile scores (ranging between 0-100) for global validation metrics of the entry are shown in the following graphic. The table shows the number of entries on which the scores are based.



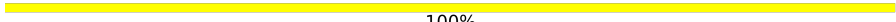
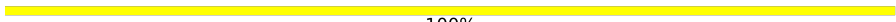

Metric	Whole archive (#Entries)	Similar resolution (#Entries, resolution range(Å))
R_{free}	130704	2092 (3.00-3.00)
Clashscore	141614	2416 (3.00-3.00)
Ramachandran outliers	138981	2333 (3.00-3.00)
Sidechain outliers	138945	2336 (3.00-3.00)
RSRZ outliers	127900	1990 (3.00-3.00)

The table below summarises the geometric issues observed across the polymeric chains and their fit to the electron density. The red, orange, yellow and green segments of the lower bar indicate the fraction of residues that contain outliers for ≥ 3 , 2, 1 and 0 types of geometric quality criteria respectively. A grey segment represents the fraction of residues that are not modelled. The numeric value for each fraction is indicated below the corresponding segment, with a dot representing fractions $\leq 5\%$. The upper red bar (where present) indicates the fraction of residues that have poor fit to the electron density. The numeric value is given above the bar.

Mol	Chain	Length	Quality of chain
1	A	242	 77% 18% ..
1	B	242	 74% 21% ..
1	C	242	 75% 20% ..
1	D	242	 75% 20% ..
2	E	2	 100%

Continued on next page...

Continued from previous page...

Mol	Chain	Length	Quality of chain
2	F	2	 100%
2	H	2	 100%
3	G	3	 100%

The following table lists non-polymeric compounds, carbohydrate monomers and non-standard residues in protein, DNA, RNA chains that are outliers for geometric or electron-density-fit criteria:

Mol	Type	Chain	Res	Chirality	Geometry	Clashes	Electron density
3	GLC	G	1	X	-	-	-

2 Entry composition

There are 6 unique types of molecules in this entry. The entry contains 7331 atoms, of which 0 are hydrogens and 0 are deuteriums.

In the tables below, the ZeroOcc column contains the number of atoms modelled with zero occupancy, the AltConf column contains the number of residues with at least one atom in alternate conformation and the Trace column contains the number of residues modelled with at most 2 atoms.

- Molecule 1 is a protein called CHITIN BINDING LECTIN, UEA-II.

Mol	Chain	Residues	Atoms					ZeroOcc	AltConf	Trace
			Total	C	N	O	S			
1	A	235	1783	1145	285	351	2	0	0	1
1	B	237	1795	1153	287	353	2	0	0	1
1	C	237	1795	1153	287	353	2	0	0	1
1	D	237	1795	1153	287	353	2	0	0	1

There are 24 discrepancies between the modelled and reference sequences:

Chain	Residue	Modelled	Actual	Comment	Reference
A	25	ASP	ALA	conflict	GB AF190633
A	62	ILE	THR	conflict	GB AF190633
A	106	GLY	SER	conflict	GB AF190633
A	112	SER	ASN	conflict	GB AF190633
A	191	GLY	GLU	conflict	GB AF190633
A	229	VAL	ILE	conflict	GB AF190633
B	25	ASP	ALA	conflict	GB AF190633
B	62	ILE	THR	conflict	GB AF190633
B	106	GLY	SER	conflict	GB AF190633
B	112	SER	ASN	conflict	GB AF190633
B	191	GLY	GLU	conflict	GB AF190633
B	229	VAL	ILE	conflict	GB AF190633
C	25	ASP	ALA	conflict	GB AF190633
C	62	ILE	THR	conflict	GB AF190633
C	106	GLY	SER	conflict	GB AF190633
C	112	SER	ASN	conflict	GB AF190633
C	191	GLY	GLU	conflict	GB AF190633
C	229	VAL	ILE	conflict	GB AF190633
D	25	ASP	ALA	conflict	GB AF190633
D	62	ILE	THR	conflict	GB AF190633
D	106	GLY	SER	conflict	GB AF190633

Continued on next page...

Continued from previous page...

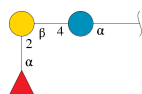
Chain	Residue	Modelled	Actual	Comment	Reference
D	112	SER	ASN	conflict	GB AF190633
D	191	GLY	GLU	conflict	GB AF190633
D	229	VAL	ILE	conflict	GB AF190633

- Molecule 2 is an oligosaccharide called alpha-L-fucopyranose-(1-2)-beta-D-galactopyranose.



Mol	Chain	Residues	Atoms			ZeroOcc	AltConf	Trace
2	E	2	Total	C	O	0	0	0
			22	12	10			
2	F	2	Total	C	O	0	0	0
			22	12	10			
2	H	2	Total	C	O	0	0	0
			22	12	10			

- Molecule 3 is an oligosaccharide called alpha-L-fucopyranose-(1-2)-beta-D-galactopyranose-(1-4)-alpha-D-glucopyranose.



Mol	Chain	Residues	Atoms			ZeroOcc	AltConf	Trace
3	G	3	Total	C	O	0	0	0
			33	18	15			

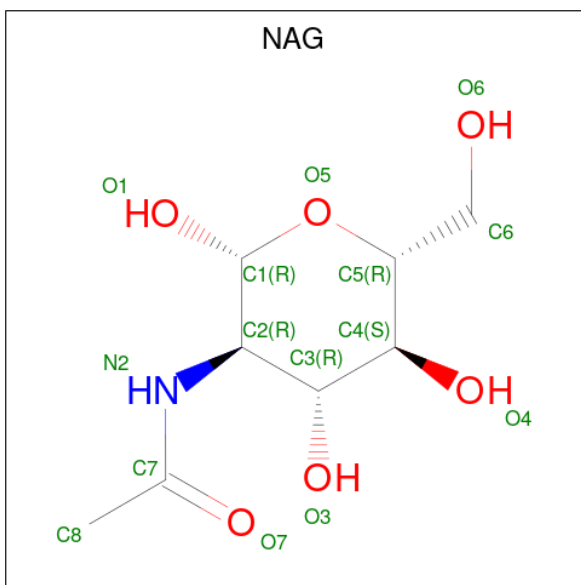
- Molecule 4 is MANGANESE (II) ION (three-letter code: MN) (formula: Mn).

Mol	Chain	Residues	Atoms		ZeroOcc	AltConf
4	A	1	Total	Mn	0	0
			1	1		
4	B	1	Total	Mn	0	0
			1	1		
4	C	1	Total	Mn	0	0
			1	1		
4	D	1	Total	Mn	0	0
			1	1		

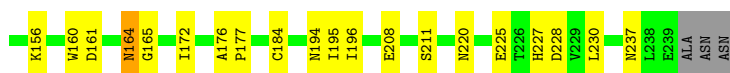
- Molecule 5 is CALCIUM ION (three-letter code: CA) (formula: Ca).

Mol	Chain	Residues	Atoms	ZeroOcc	AltConf
5	A	1	Total Ca 1 1	0	0
5	B	1	Total Ca 1 1	0	0
5	C	1	Total Ca 1 1	0	0
5	D	1	Total Ca 1 1	0	0

- Molecule 6 is 2-acetamido-2-deoxy-beta-D-glucopyranose (three-letter code: NAG) (formula: C₈H₁₅NO₆).



Mol	Chain	Residues	Atoms	ZeroOcc	AltConf
6	A	1	Total C N O 14 8 1 5	0	0
6	B	1	Total C N O 14 8 1 5	0	0
6	C	1	Total C N O 14 8 1 5	0	0
6	D	1	Total C N O 14 8 1 5	0	0



- Molecule 2: alpha-L-fucopyranose-(1-2)-beta-D-galactopyranose

Chain E:  100%

GALI
FUC2

- Molecule 2: alpha-L-fucopyranose-(1-2)-beta-D-galactopyranose

Chain F:  100%


GALI
FUC2

- Molecule 2: alpha-L-fucopyranose-(1-2)-beta-D-galactopyranose

Chain H:  100%

GALI
FUC2

- Molecule 3: alpha-L-fucopyranose-(1-2)-beta-D-galactopyranose-(1-4)-alpha-D-glucopyranose

Chain G:  100%

GLC1
GAL2
FUC3

4 Data and refinement statistics i

Property	Value	Source
Space group	P 32 2 1	Depositor
Cell constants a, b, c, α , β , γ	104.77Å 104.77Å 175.19Å 90.00° 90.00° 120.00°	Depositor
Resolution (Å)	30.00 – 3.00 19.80 – 2.99	Depositor EDS
% Data completeness (in resolution range)	98.9 (30.00-3.00) 99.1 (19.80-2.99)	Depositor EDS
R_{merge}	0.20	Depositor
R_{sym}	(Not available)	Depositor
$\langle I/\sigma(I) \rangle$ ¹	3.04 (at 2.98Å)	Xtrriage
Refinement program	X-PLOR 3.8	Depositor
R, R_{free}	0.192 , 0.215 0.190 , 0.213	Depositor DCC
R_{free} test set	1794 reflections (7.90%)	wwPDB-VP
Wilson B-factor (Å ²)	37.2	Xtrriage
Anisotropy	0.061	Xtrriage
Bulk solvent k_{sol} (e/Å ³), B_{sol} (Å ²)	0.29 , 30.9	EDS
L-test for twinning ²	$\langle L \rangle = 0.48$, $\langle L^2 \rangle = 0.32$	Xtrriage
Estimated twinning fraction	0.022 for -h,-k,l	Xtrriage
F_o, F_c correlation	0.93	EDS
Total number of atoms	7331	wwPDB-VP
Average B, all atoms (Å ²)	26.0	wwPDB-VP

Xtrriage's analysis on translational NCS is as follows: *The largest off-origin peak in the Patterson function is 5.78% of the height of the origin peak. No significant pseudotranslation is detected.*

¹Intensities estimated from amplitudes.

²Theoretical values of $\langle |L| \rangle$, $\langle L^2 \rangle$ for acentric reflections are 0.5, 0.333 respectively for untwinned datasets, and 0.375, 0.2 for perfectly twinned datasets.

5 Model quality [i](#)

5.1 Standard geometry [i](#)

Bond lengths and bond angles in the following residue types are not validated in this section: GLC, CA, FUC, GAL, NAG, MN

The Z score for a bond length (or angle) is the number of standard deviations the observed value is removed from the expected value. A bond length (or angle) with $|Z| > 5$ is considered an outlier worth inspection. RMSZ is the root-mean-square of all Z scores of the bond lengths (or angles).

Mol	Chain	Bond lengths		Bond angles	
		RMSZ	# Z >5	RMSZ	# Z >5
1	A	0.43	0/1827	0.69	0/2489
1	B	0.45	0/1841	0.70	0/2511
1	C	0.42	0/1841	0.68	0/2511
1	D	0.43	0/1841	0.69	0/2511
All	All	0.43	0/7350	0.69	0/10022

There are no bond length outliers.

There are no bond angle outliers.

There are no chirality outliers.

There are no planarity outliers.

5.2 Too-close contacts [i](#)

In the following table, the Non-H and H(model) columns list the number of non-hydrogen atoms and hydrogen atoms in the chain respectively. The H(added) column lists the number of hydrogen atoms added and optimized by MolProbity. The Clashes column lists the number of clashes within the asymmetric unit, whereas Symm-Clashes lists symmetry-related clashes.

Mol	Chain	Non-H	H(model)	H(added)	Clashes	Symm-Clashes
1	A	1783	0	1721	24	0
1	B	1795	0	1731	31	0
1	C	1795	0	1731	32	0
1	D	1795	0	1731	33	0
2	E	22	0	21	0	0
2	F	22	0	21	4	0
2	H	22	0	21	5	0
3	G	33	0	30	8	0
4	A	1	0	0	0	0

Continued on next page...

Continued from previous page...

Mol	Chain	Non-H	H(model)	H(added)	Clashes	Symm-Clashes
4	B	1	0	0	0	0
4	C	1	0	0	0	0
4	D	1	0	0	0	0
5	A	1	0	0	0	0
5	B	1	0	0	0	0
5	C	1	0	0	0	0
5	D	1	0	0	0	0
6	A	14	0	13	0	0
6	B	14	0	13	0	0
6	C	14	0	13	0	0
6	D	14	0	13	0	0
All	All	7331	0	7059	122	0

The all-atom clashscore is defined as the number of clashes found per 1000 atoms (including hydrogen atoms). The all-atom clashscore for this structure is 8.

The worst 5 of 122 close contacts within the same asymmetric unit are listed below, sorted by their clash magnitude.

Atom-1	Atom-2	Interatomic distance (Å)	Clash overlap (Å)
1:C:79:ALA:H	1:C:164:ASN:HD21	1.29	0.81
1:D:79:ALA:H	1:D:164:ASN:HD21	1.29	0.81
1:B:79:ALA:H	1:B:164:ASN:HD21	1.30	0.80
1:A:79:ALA:H	1:A:164:ASN:HD21	1.30	0.78
1:C:220:ASN:HB3	3:G:2:GAL:H61	1.68	0.75

There are no symmetry-related clashes.

5.3 Torsion angles [i](#)

5.3.1 Protein backbone [i](#)

In the following table, the Percentiles column shows the percent Ramachandran outliers of the chain as a percentile score with respect to all X-ray entries followed by that with respect to entries of similar resolution.

The Analysed column shows the number of residues for which the backbone conformation was analysed, and the total number of residues.

Mol	Chain	Analysed	Favoured	Allowed	Outliers	Percentiles
1	A	231/242 (96%)	223 (96%)	8 (4%)	0	100 100

Continued on next page...

Continued from previous page...

Mol	Chain	Analysed	Favoured	Allowed	Outliers	Percentiles	
1	B	235/242 (97%)	227 (97%)	8 (3%)	0	100	100
1	C	235/242 (97%)	227 (97%)	8 (3%)	0	100	100
1	D	235/242 (97%)	225 (96%)	10 (4%)	0	100	100
All	All	936/968 (97%)	902 (96%)	34 (4%)	0	100	100

There are no Ramachandran outliers to report.

5.3.2 Protein sidechains [i](#)

In the following table, the Percentiles column shows the percent sidechain outliers of the chain as a percentile score with respect to all X-ray entries followed by that with respect to entries of similar resolution.

The Analysed column shows the number of residues for which the sidechain conformation was analysed, and the total number of residues.

Mol	Chain	Analysed	Rotameric	Outliers	Percentiles	
1	A	197/205 (96%)	178 (90%)	19 (10%)	8	32
1	B	198/205 (97%)	179 (90%)	19 (10%)	8	32
1	C	198/205 (97%)	180 (91%)	18 (9%)	9	34
1	D	198/205 (97%)	180 (91%)	18 (9%)	9	34
All	All	791/820 (96%)	717 (91%)	74 (9%)	8	32

5 of 74 residues with a non-rotameric sidechain are listed below:

Mol	Chain	Res	Type
1	D	12	LYS
1	D	184	CYS
1	D	31	THR
1	D	86	ASP
1	B	36	VAL

Sometimes sidechains can be flipped to improve hydrogen bonding and reduce clashes. 5 of 27 such sidechains are listed below:

Mol	Chain	Res	Type
1	B	237	ASN
1	C	164	ASN
1	D	194	ASN

Continued on next page...

Continued from previous page...

Mol	Chain	Res	Type
1	C	150	ASN
1	C	194	ASN

5.3.3 RNA [i](#)

There are no RNA molecules in this entry.

5.4 Non-standard residues in protein, DNA, RNA chains [i](#)

There are no non-standard protein/DNA/RNA residues in this entry.

5.5 Carbohydrates [i](#)

9 monosaccharides are modelled in this entry.

In the following table, the Counts columns list the number of bonds (or angles) for which Mogul statistics could be retrieved, the number of bonds (or angles) that are observed in the model and the number of bonds (or angles) that are defined in the Chemical Component Dictionary. The Link column lists molecule types, if any, to which the group is linked. The Z score for a bond length (or angle) is the number of standard deviations the observed value is removed from the expected value. A bond length (or angle) with $|Z| > 2$ is considered an outlier worth inspection. RMSZ is the root-mean-square of all Z scores of the bond lengths (or angles).

Mol	Type	Chain	Res	Link	Bond lengths			Bond angles		
					Counts	RMSZ	$\# Z > 2$	Counts	RMSZ	$\# Z > 2$
2	GAL	E	1	2	12,12,12	0.23	0	17,17,17	0.61	0
2	FUC	E	2	2	10,10,11	0.50	0	14,14,16	0.42	0
2	GAL	F	1	2	12,12,12	0.39	0	17,17,17	0.58	0
2	FUC	F	2	2	10,10,11	0.48	0	14,14,16	0.28	0
3	GLC	G	1	3	12,12,12	0.38	0	17,17,17	0.49	0
3	GAL	G	2	3	11,11,12	0.38	0	15,15,17	0.65	0
3	FUC	G	3	3	10,10,11	0.54	0	14,14,16	0.35	0
2	GAL	H	1	2	12,12,12	0.41	0	17,17,17	0.58	0
2	FUC	H	2	2	10,10,11	0.50	0	14,14,16	0.31	0

In the following table, the Chirals column lists the number of chiral outliers, the number of chiral centers analysed, the number of these observed in the model and the number defined in the Chemical Component Dictionary. Similar counts are reported in the Torsion and Rings columns. '2' means no outliers of that kind were identified.

Mol	Type	Chain	Res	Link	Chirals	Torsions	Rings
2	GAL	E	1	2	-	0/2/22/22	0/1/1/1
2	FUC	E	2	2	-	-	0/1/1/1
2	GAL	F	1	2	-	0/2/22/22	0/1/1/1
2	FUC	F	2	2	-	-	0/1/1/1
3	GLC	G	1	3	1/1/5/5	2/2/22/22	0/1/1/1
3	GAL	G	2	3	-	0/2/19/22	0/1/1/1
3	FUC	G	3	3	-	-	0/1/1/1
2	GAL	H	1	2	-	0/2/22/22	0/1/1/1
2	FUC	H	2	2	-	-	0/1/1/1

There are no bond length outliers.

There are no bond angle outliers.

All (1) chirality outliers are listed below:

Mol	Chain	Res	Type	Atom
3	G	1	GLC	C1

All (2) torsion outliers are listed below:

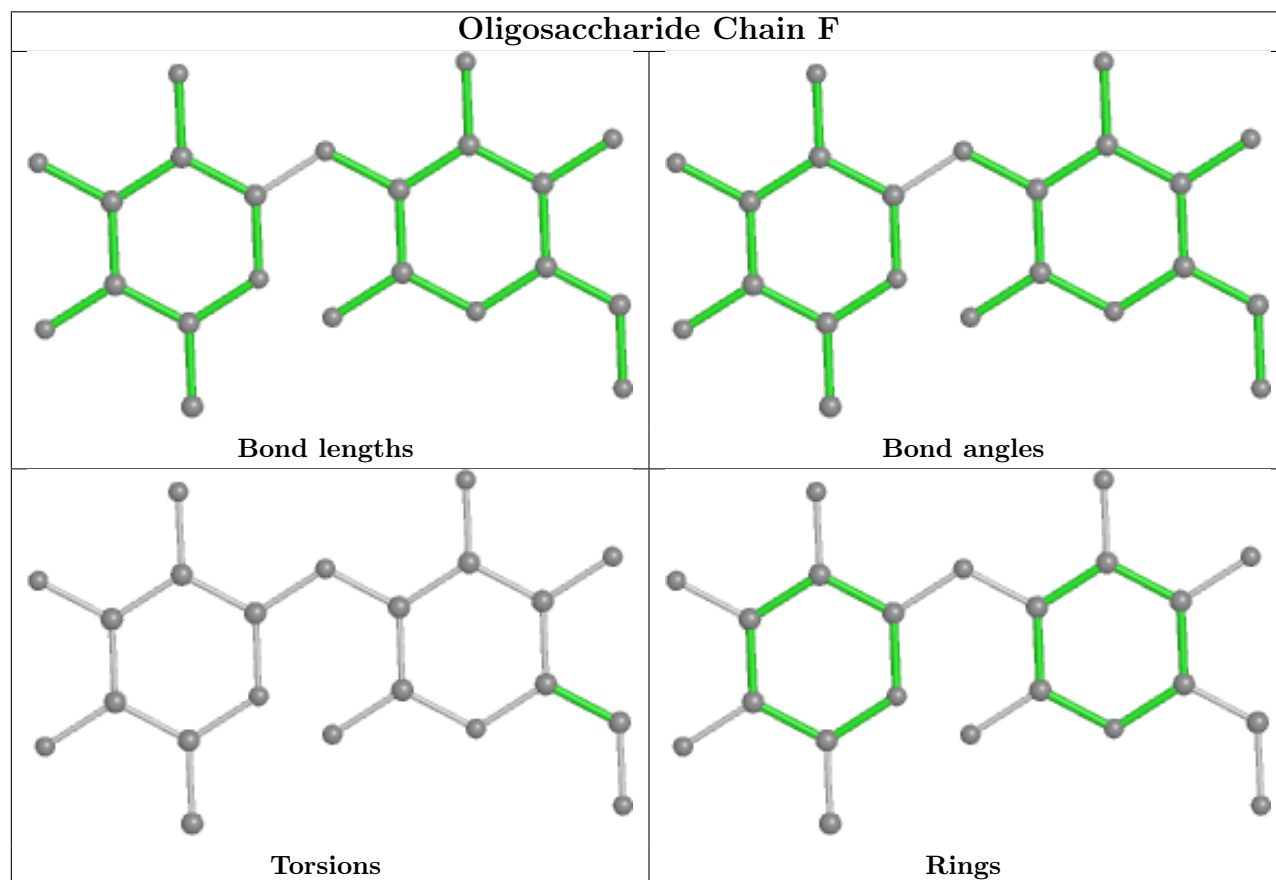
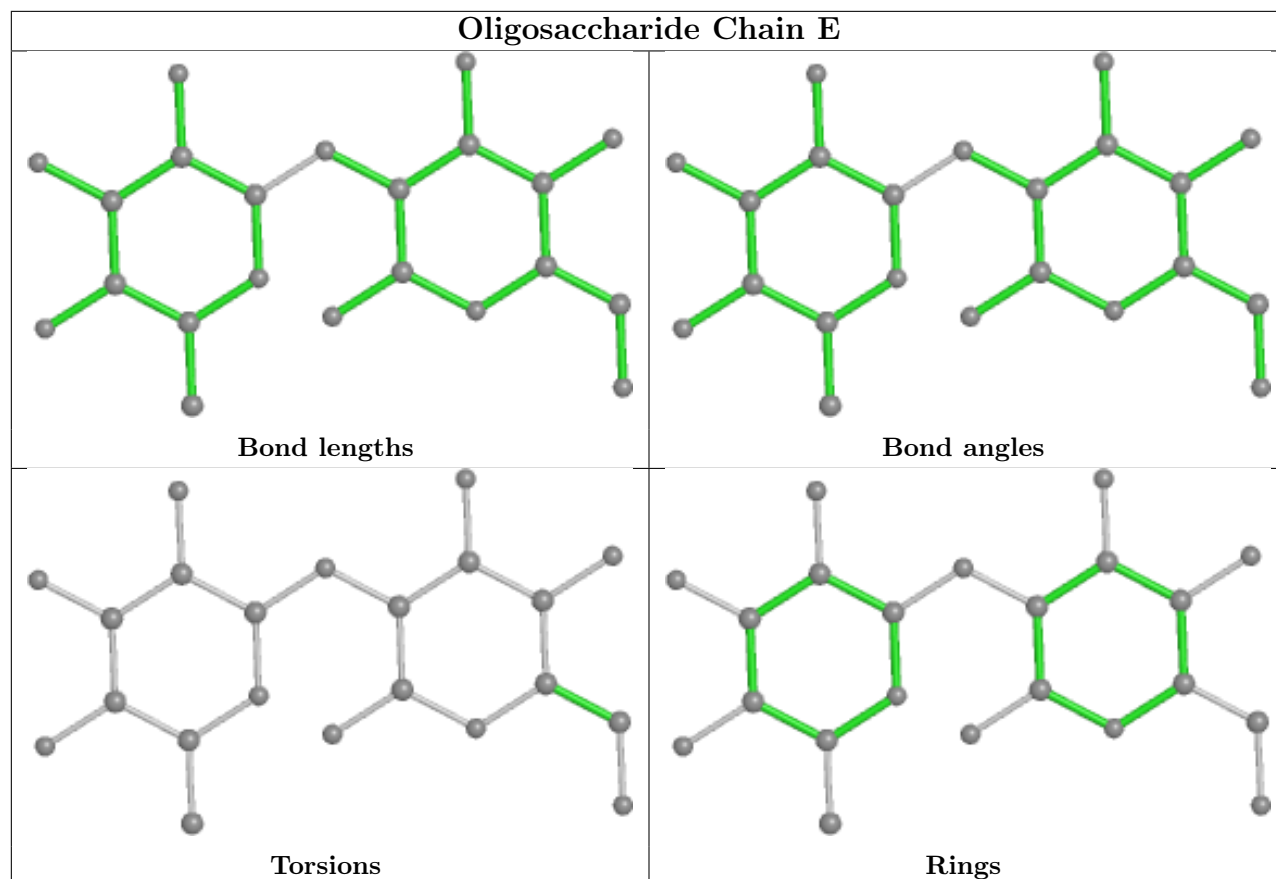
Mol	Chain	Res	Type	Atoms
3	G	1	GLC	O5-C5-C6-O6
3	G	1	GLC	C4-C5-C6-O6

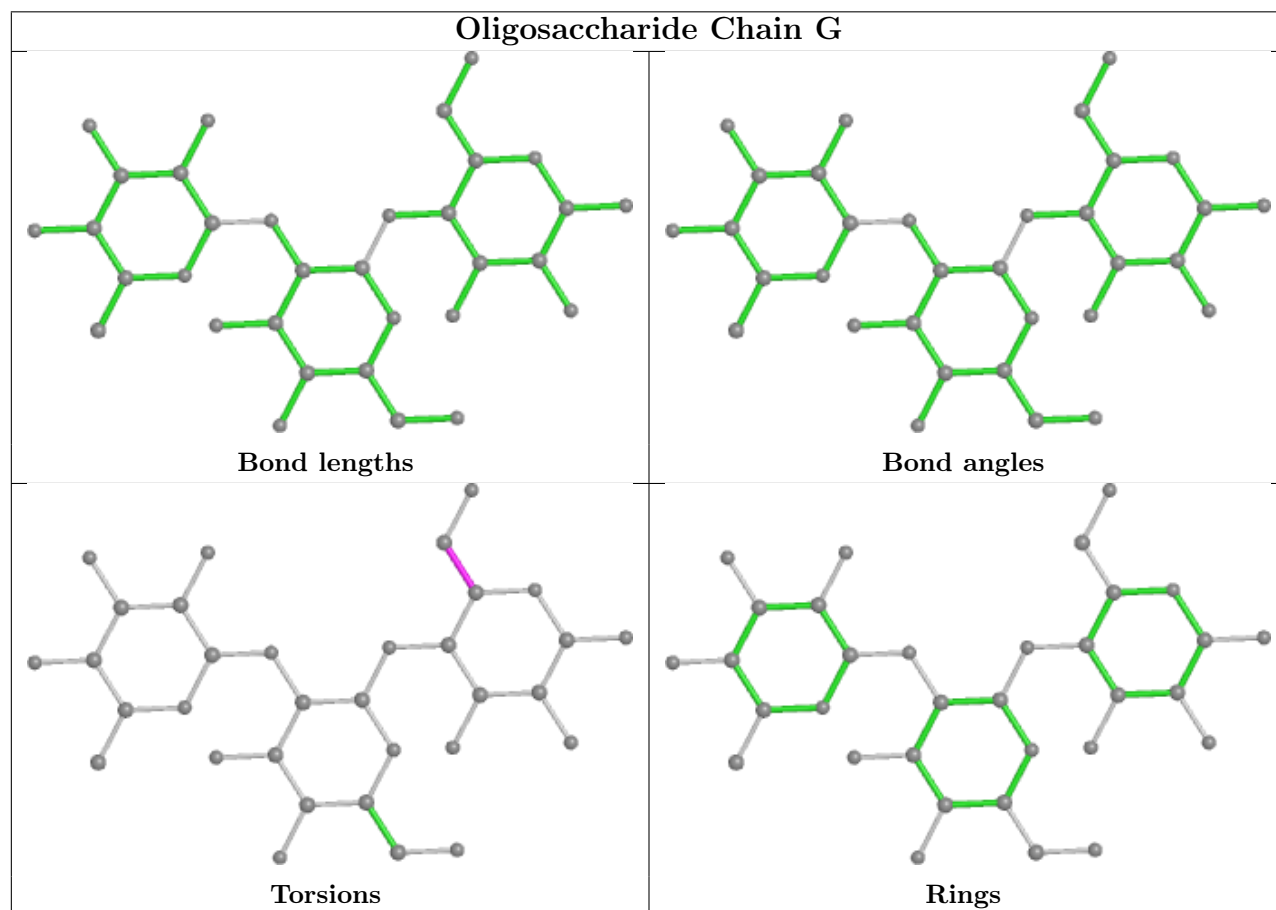
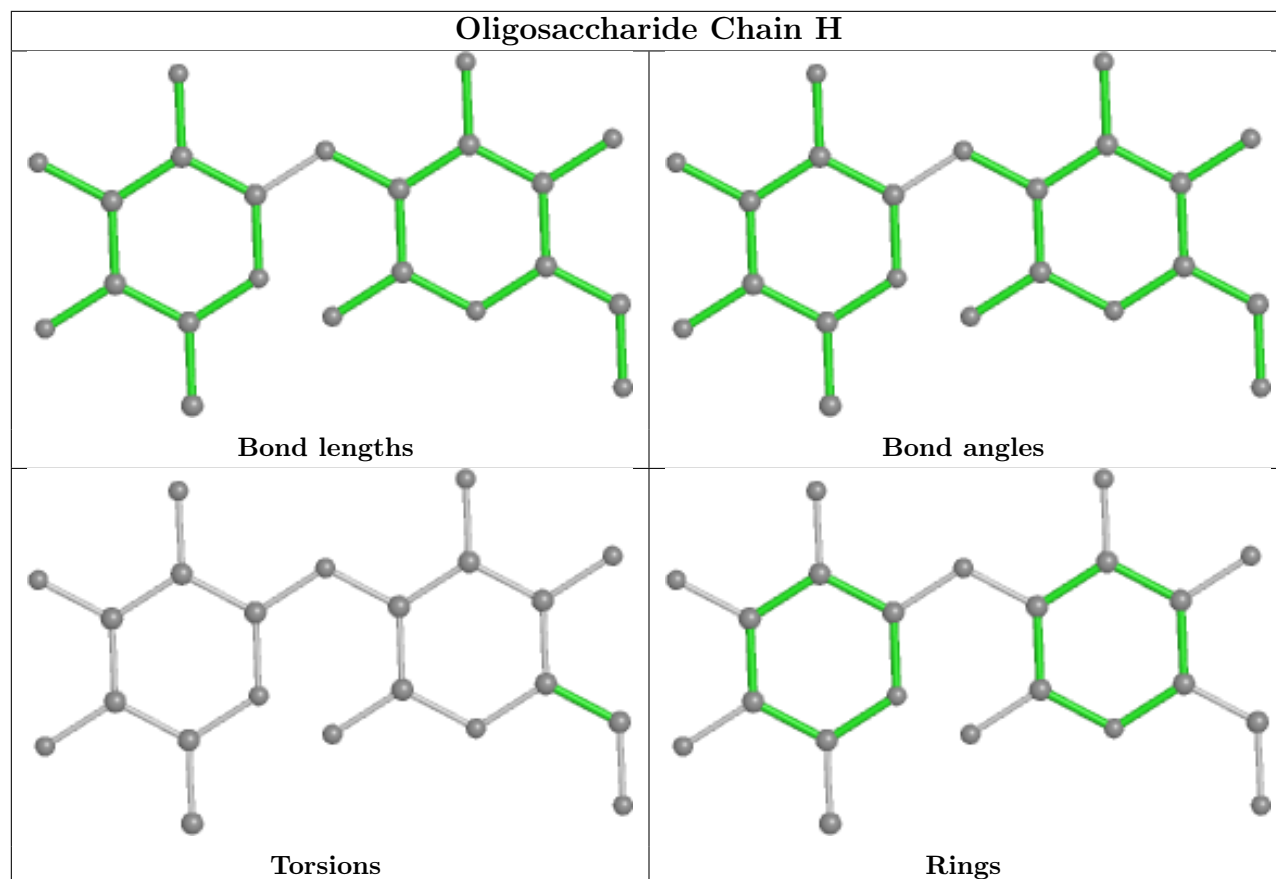
There are no ring outliers.

7 monomers are involved in 17 short contacts:

Mol	Chain	Res	Type	Clashes	Symm-Clashes
3	G	2	GAL	3	0
2	F	1	GAL	2	0
3	G	1	GLC	4	0
2	H	2	FUC	3	0
2	H	1	GAL	2	0
2	F	2	FUC	2	0
3	G	3	FUC	5	0

The following is a two-dimensional graphical depiction of Mogul quality analysis of bond lengths, bond angles, torsion angles, and ring geometry for oligosaccharide.





5.6 Ligand geometry [i](#)

Of 12 ligands modelled in this entry, 8 are monoatomic - leaving 4 for Mogul analysis.

In the following table, the Counts columns list the number of bonds (or angles) for which Mogul statistics could be retrieved, the number of bonds (or angles) that are observed in the model and the number of bonds (or angles) that are defined in the Chemical Component Dictionary. The Link column lists molecule types, if any, to which the group is linked. The Z score for a bond length (or angle) is the number of standard deviations the observed value is removed from the expected value. A bond length (or angle) with $|Z| > 2$ is considered an outlier worth inspection. RMSZ is the root-mean-square of all Z scores of the bond lengths (or angles).

Mol	Type	Chain	Res	Link	Bond lengths			Bond angles		
					Counts	RMSZ	# Z > 2	Counts	RMSZ	# Z > 2
6	NAG	C	401	1	14,14,15	0.82	0	17,19,21	1.33	2 (11%)
6	NAG	B	401	1	14,14,15	0.65	0	17,19,21	1.48	3 (17%)
6	NAG	D	401	1	14,14,15	0.76	0	17,19,21	1.36	2 (11%)
6	NAG	A	401	1	14,14,15	0.74	0	17,19,21	1.49	4 (23%)

In the following table, the Chirals column lists the number of chiral outliers, the number of chiral centers analysed, the number of these observed in the model and the number defined in the Chemical Component Dictionary. Similar counts are reported in the Torsion and Rings columns. '-' means no outliers of that kind were identified.

Mol	Type	Chain	Res	Link	Chirals	Torsions	Rings
6	NAG	C	401	1	-	1/6/23/26	0/1/1/1
6	NAG	B	401	1	-	1/6/23/26	0/1/1/1
6	NAG	D	401	1	-	1/6/23/26	0/1/1/1
6	NAG	A	401	1	-	1/6/23/26	0/1/1/1

There are no bond length outliers.

The worst 5 of 11 bond angle outliers are listed below:

Mol	Chain	Res	Type	Atoms	Z	Observed(°)	Ideal(°)
6	B	401	NAG	C1-O5-C5	3.30	116.66	112.19
6	A	401	NAG	C1-O5-C5	2.99	116.24	112.19
6	B	401	NAG	O5-C5-C6	-2.65	103.05	107.20
6	C	401	NAG	C3-C4-C5	2.55	114.79	110.24
6	B	401	NAG	C3-C4-C5	2.51	114.72	110.24

There are no chirality outliers.

All (4) torsion outliers are listed below:

Mol	Chain	Res	Type	Atoms
6	A	401	NAG	O5-C5-C6-O6
6	D	401	NAG	O5-C5-C6-O6
6	B	401	NAG	O5-C5-C6-O6
6	C	401	NAG	O5-C5-C6-O6

There are no ring outliers.

No monomer is involved in short contacts.

5.7 Other polymers [i](#)

There are no such residues in this entry.

5.8 Polymer linkage issues [i](#)

There are no chain breaks in this entry.

6 Fit of model and data [i](#)

6.1 Protein, DNA and RNA chains [i](#)

In the following table, the column labelled '#RSRZ > 2' contains the number (and percentage) of RSRZ outliers, followed by percent RSRZ outliers for the chain as percentile scores relative to all X-ray entries and entries of similar resolution. The OWAB column contains the minimum, median, 95th percentile and maximum values of the occupancy-weighted average B-factor per residue. The column labelled 'Q < 0.9' lists the number of (and percentage) of residues with an average occupancy less than 0.9.

Mol	Chain	Analysed	<RSRZ>	#RSRZ>2	OWAB(Å ²)	Q<0.9
1	A	235/242 (97%)	-0.65	1 (0%) 92 79	10, 22, 47, 66	0
1	B	237/242 (97%)	-0.67	0 100 100	10, 22, 49, 66	0
1	C	237/242 (97%)	-0.67	0 100 100	10, 22, 49, 66	0
1	D	237/242 (97%)	-0.66	1 (0%) 92 79	10, 22, 50, 66	0
All	All	946/968 (97%)	-0.66	2 (0%) 95 87	10, 22, 49, 66	0

All (2) RSRZ outliers are listed below:

Mol	Chain	Res	Type	RSRZ
1	D	3	SER	3.0
1	A	3	SER	2.2

6.2 Non-standard residues in protein, DNA, RNA chains [i](#)

There are no non-standard protein/DNA/RNA residues in this entry.

6.3 Carbohydrates [i](#)

In the following table, the Atoms column lists the number of modelled atoms in the group and the number defined in the chemical component dictionary. The B-factors column lists the minimum, median, 95th percentile and maximum values of B factors of atoms in the group. The column labelled 'Q < 0.9' lists the number of atoms with occupancy less than 0.9.

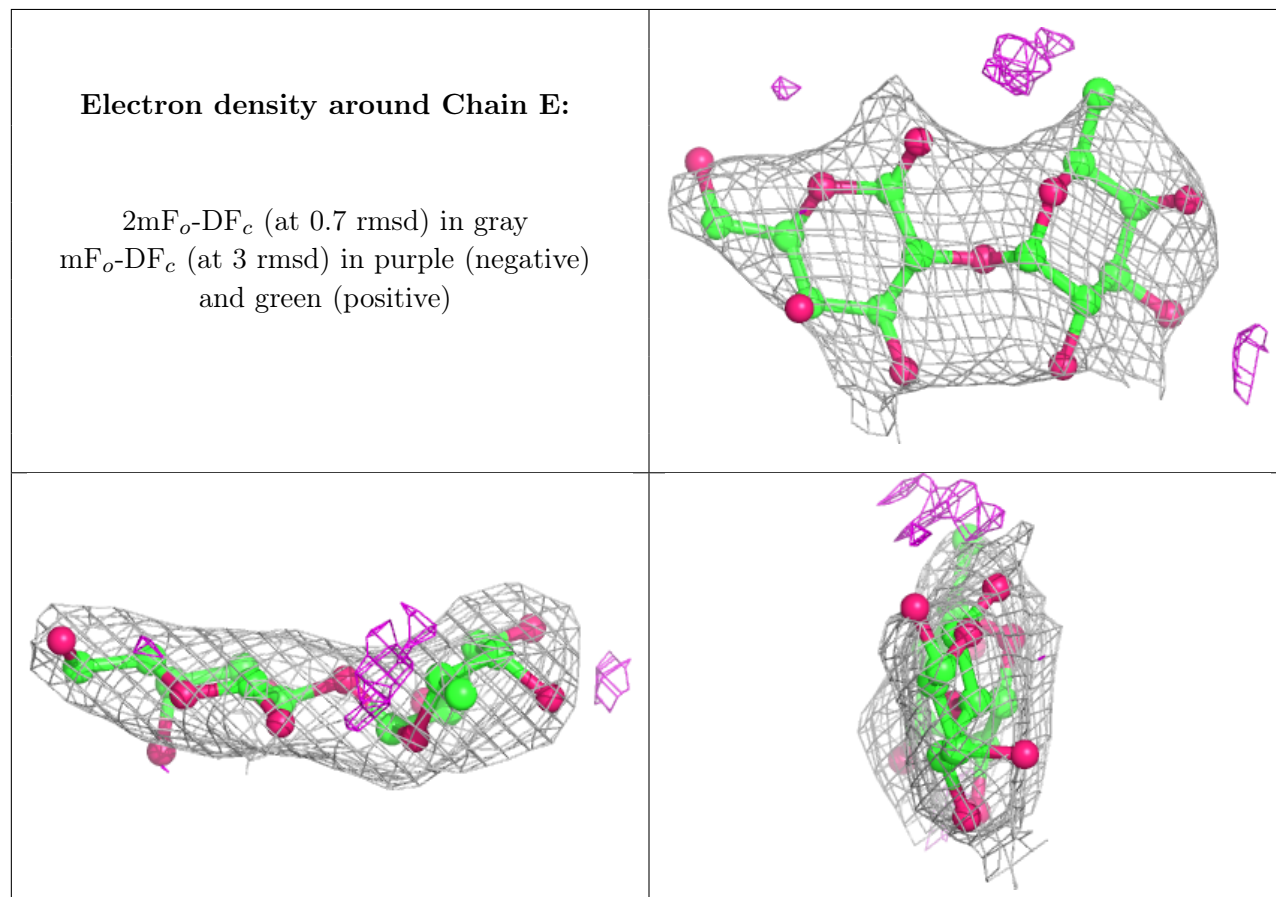
Mol	Type	Chain	Res	Atoms	RSCC	RSR	B-factors(Å ²)	Q<0.9
3	FUC	G	3	10/11	0.83	0.29	53,54,54,54	0
3	GLC	G	1	12/12	0.86	0.37	54,55,56,56	0
2	FUC	F	2	10/11	0.88	0.25	53,53,54,54	0
2	GAL	H	1	12/12	0.90	0.23	52,53,53,54	0
3	GAL	G	2	11/12	0.90	0.24	52,53,53,54	0

Continued on next page...

Continued from previous page...

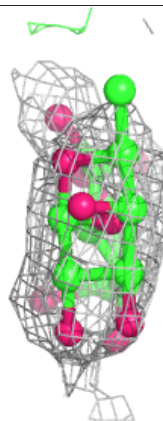
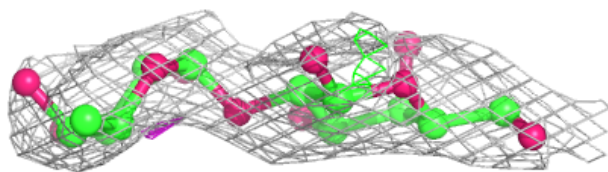
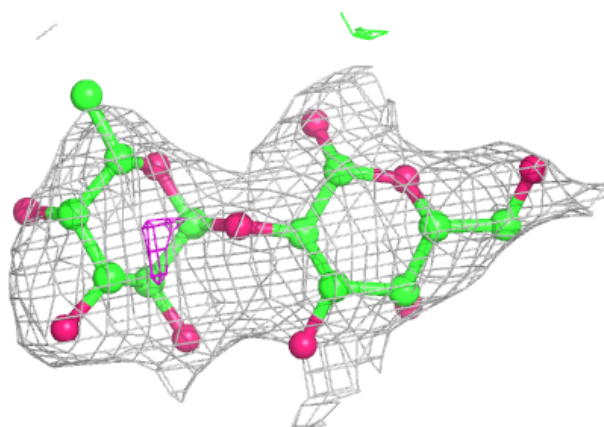
Mol	Type	Chain	Res	Atoms	RSCC	RSR	B-factors(\AA^2)	Q<0.9
2	FUC	H	2	10/11	0.90	0.31	53,53,54,54	0
2	FUC	E	2	10/11	0.92	0.19	53,54,54,54	0
2	GAL	F	1	12/12	0.93	0.23	52,53,54,54	0
2	GAL	E	1	12/12	0.95	0.23	52,53,53,54	0

The following is a graphical depiction of the model fit to experimental electron density for oligosaccharide. Each fit is shown from different orientation to approximate a three-dimensional view.

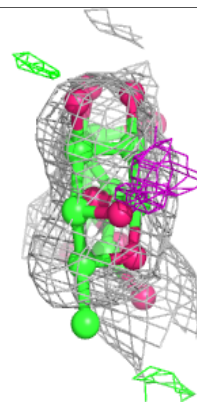
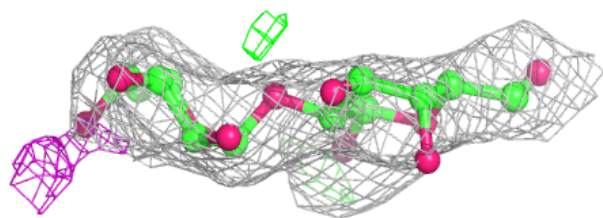
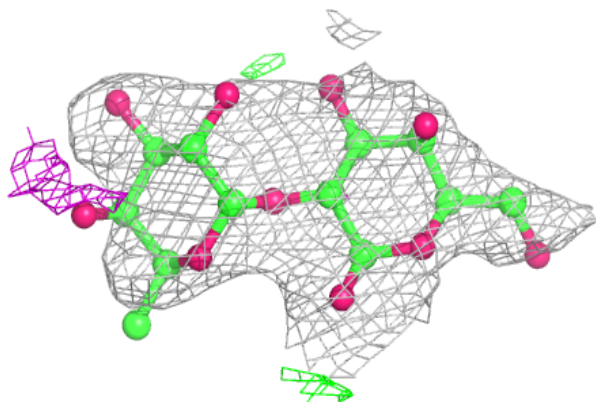


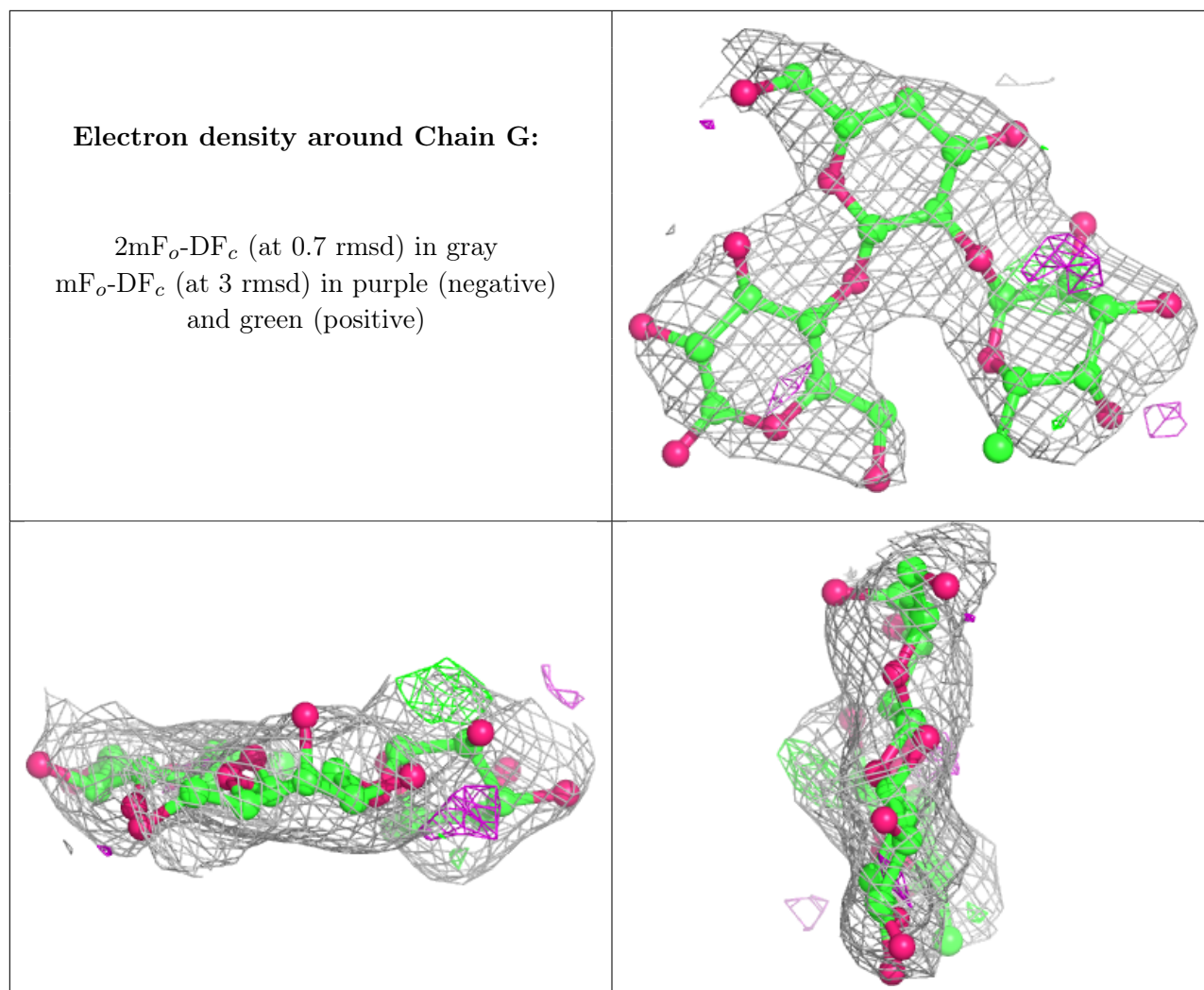
Electron density around Chain F:

$2mF_o-DF_c$ (at 0.7 rmsd) in gray
 mF_o-DF_c (at 3 rmsd) in purple (negative)
and green (positive)

**Electron density around Chain H:**

$2mF_o-DF_c$ (at 0.7 rmsd) in gray
 mF_o-DF_c (at 3 rmsd) in purple (negative)
and green (positive)





6.4 Ligands [i](#)

In the following table, the Atoms column lists the number of modelled atoms in the group and the number defined in the chemical component dictionary. The B-factors column lists the minimum, median, 95th percentile and maximum values of B factors of atoms in the group. The column labelled 'Q< 0.9' lists the number of atoms with occupancy less than 0.9.

Mol	Type	Chain	Res	Atoms	RSCC	RSR	B-factors(Å ²)	Q<0.9
6	NAG	B	401	14/15	0.74	0.31	60,65,70,71	0
6	NAG	A	401	14/15	0.75	0.32	59,63,68,69	0
6	NAG	C	401	14/15	0.77	0.35	59,63,68,69	0
6	NAG	D	401	14/15	0.77	0.36	59,63,69,69	0
5	CA	D	308	1/1	0.83	0.10	22,22,22,22	0
5	CA	C	306	1/1	0.95	0.12	22,22,22,22	0
4	MN	B	303	1/1	0.97	0.09	7,7,7,7	0
5	CA	A	302	1/1	0.97	0.11	23,23,23,23	0
5	CA	B	304	1/1	0.97	0.14	22,22,22,22	0

Continued on next page...

Continued from previous page...

Mol	Type	Chain	Res	Atoms	RSCC	RSR	B-factors(\AA^2)	Q<0.9
4	MN	A	301	1/1	0.98	0.11	10,10,10,10	0
4	MN	C	305	1/1	0.98	0.11	10,10,10,10	0
4	MN	D	307	1/1	0.99	0.10	9,9,9,9	0

6.5 Other polymers [i](#)

There are no such residues in this entry.