



Full wwPDB X-ray Structure Validation Report ⓘ

Nov 6, 2023 – 01:36 PM EST

PDB ID : 4QO8
Title : Lactate Dehydrogenase A in complex with substituted 3-Hydroxy-2-mercapto cyclohex-2-enone compound 104
Authors : Eigenbrot, C.; Ultsch, M.
Deposited on : 2014-06-19
Resolution : 2.00 Å(reported)

This is a Full wwPDB X-ray Structure Validation Report for a publicly released PDB entry.

We welcome your comments at validation@mail.wwpdb.org

A user guide is available at

<https://www.wwpdb.org/validation/2017/XrayValidationReportHelp>

with specific help available everywhere you see the ⓘ symbol.

The types of validation reports are described at

<http://www.wwpdb.org/validation/2017/FAQs#types>.

The following versions of software and data (see [references ⓘ](#)) were used in the production of this report:

MolProbity : 4.02b-467
Mogul : 1.8.5 (274361), CSD as541be (2020)
Xtriage (Phenix) : 1.13
EDS : 2.36
buster-report : 1.1.7 (2018)
Percentile statistics : 20191225.v01 (using entries in the PDB archive December 25th 2019)
Refmac : 5.8.0158
CCP4 : 7.0.044 (Gargrove)
Ideal geometry (proteins) : Engh & Huber (2001)
Ideal geometry (DNA, RNA) : Parkinson et al. (1996)
Validation Pipeline (wwPDB-VP) : 2.36

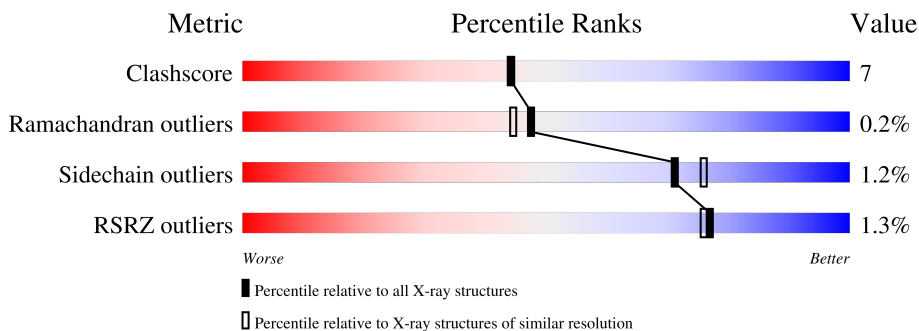
1 Overall quality at a glance

The following experimental techniques were used to determine the structure:

X-RAY DIFFRACTION

The reported resolution of this entry is 2.00 Å.

Percentile scores (ranging between 0-100) for global validation metrics of the entry are shown in the following graphic. The table shows the number of entries on which the scores are based.



Metric	Whole archive (#Entries)	Similar resolution (#Entries, resolution range(Å))
Clashscore	141614	9178 (2.00-2.00)
Ramachandran outliers	138981	9054 (2.00-2.00)
Sidechain outliers	138945	9053 (2.00-2.00)
RSRZ outliers	127900	7900 (2.00-2.00)

The table below summarises the geometric issues observed across the polymeric chains and their fit to the electron density. The red, orange, yellow and green segments of the lower bar indicate the fraction of residues that contain outliers for ≥ 3 , 2, 1 and 0 types of geometric quality criteria respectively. A grey segment represents the fraction of residues that are not modelled. The numeric value for each fraction is indicated below the corresponding segment, with a dot representing fractions $\leq 5\%$. The upper red bar (where present) indicates the fraction of residues that have poor fit to the electron density. The numeric value is given above the bar.

Mol	Chain	Length	Quality of chain
1	A	331	 2% 87% 12%
1	B	331	 % 90% 10%
1	C	331	 % 84% 15%
1	D	331	 % 88% 11%

2 Entry composition [i](#)

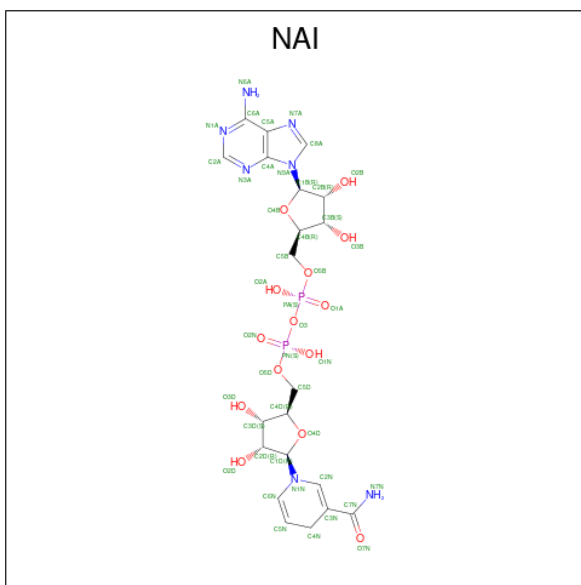
There are 7 unique types of molecules in this entry. The entry contains 11548 atoms, of which 5 are hydrogens and 0 are deuteriums.

In the tables below, the ZeroOcc column contains the number of atoms modelled with zero occupancy, the AltConf column contains the number of residues with at least one atom in alternate conformation and the Trace column contains the number of residues modelled with at most 2 atoms.

- Molecule 1 is a protein called L-lactate dehydrogenase A chain.

Mol	Chain	Residues	Atoms					ZeroOcc	AltConf	Trace
			Total	C	N	O	S			
1	A	331	Total 2601	C 1662	N 440	O 484	S 15	0	7	0
1	B	331	Total 2635	C 1692	N 446	O 483	S 14	0	10	0
1	C	331	Total 2615	C 1674	N 443	O 482	S 16	0	9	0
1	D	331	Total 2600	C 1664	N 443	O 478	S 15	0	6	0

- Molecule 2 is 1,4-DIHYDRONICOTINAMIDE ADENINE DINUCLEOTIDE (three-letter code: NAI) (formula: C₂₁H₂₉N₇O₁₄P₂).



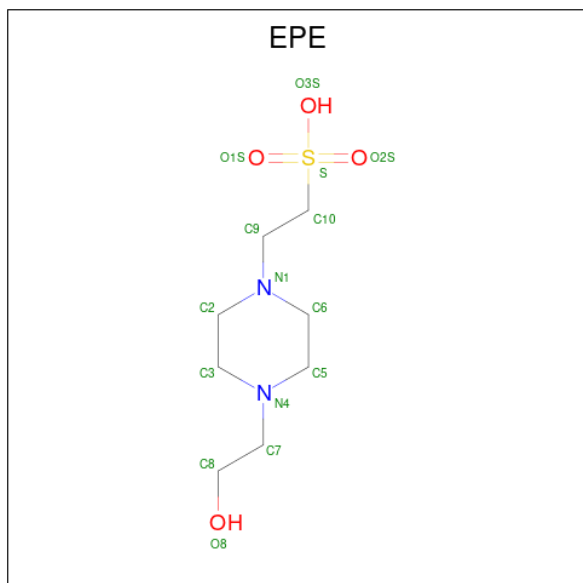
Mol	Chain	Residues	Atoms				ZeroOcc	AltConf	
			Total	C	N	O			P
2	A	1	Total 44	C 21	N 7	O 14	P 2	0	0
2	B	1	Total 44	C 21	N 7	O 14	P 2	0	0

Continued on next page...

Continued from previous page...

Mol	Chain	Residues	Atoms				ZeroOcc	AltConf	
2	C	1	Total	C	N	O	P	0	0
			44	21	7	14	2		
2	D	1	Total	C	N	O	P	0	0
			44	21	7	14	2		

- Molecule 3 is 4-(2-HYDROXYETHYL)-1-PIPERAZINE ETHANESULFONIC ACID (three-letter code: EPE) (formula: C₈H₁₈N₂O₄S).



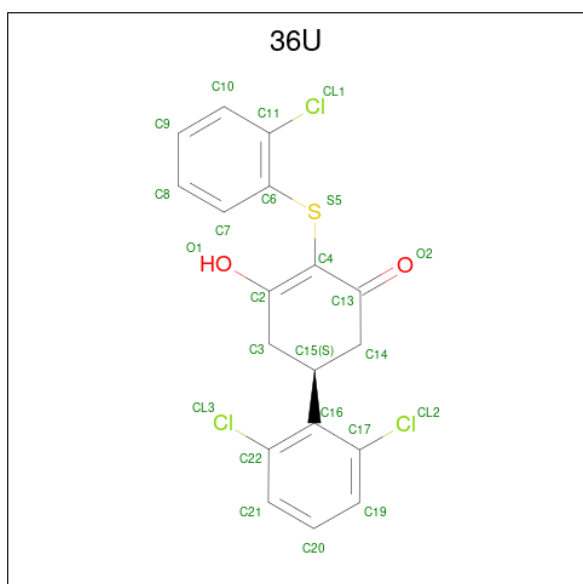
Mol	Chain	Residues	Atoms				ZeroOcc	AltConf	
3	A	1	Total	C	N	O	S	0	0
			15	8	2	4	1		
3	B	1	Total	C	N	O	S	0	0
			15	8	2	4	1		
3	C	1	Total	C	N	O	S	0	0
			15	8	2	4	1		

- Molecule 4 is SULFATE ION (three-letter code: SO4) (formula: O₄S).



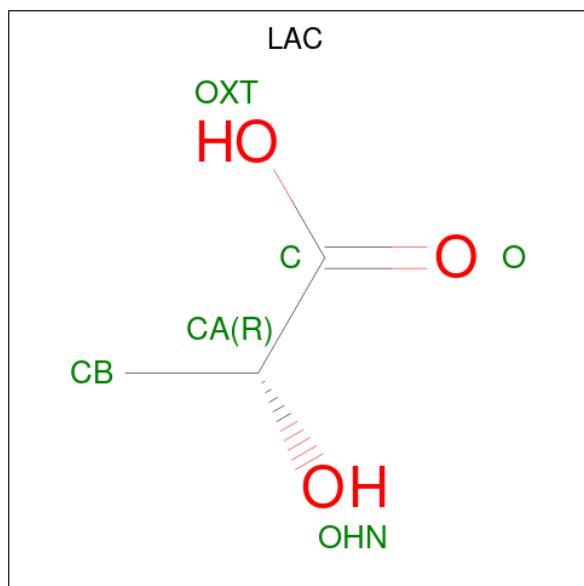
Mol	Chain	Residues	Atoms			ZeroOcc	AltConf
4	A	1	Total	O	S	0	0
			5	4	1		
4	B	1	Total	O	S	0	0
			5	4	1		
4	C	1	Total	O	S	0	0
			5	4	1		
4	D	1	Total	O	S	0	0
			5	4	1		

- Molecule 5 is (5S)-2-[(2-chlorophenyl)sufanyl]-5-(2,6-dichlorophenyl)-3-hydroxycyclohex-2-en-1-one (three-letter code: 36U) (formula: C₁₈H₁₃Cl₃O₂S).



Mol	Chain	Residues	Atoms					ZeroOcc	AltConf
			Total	C	Cl	O	S		
5	A	1	24	18	3	2	1	0	0
5	C	1	24	18	3	2	1	0	0
5	D	1	24	18	3	2	1	0	0

- Molecule 6 is LACTIC ACID (three-letter code: LAC) (formula: C₃H₆O₃).



Mol	Chain	Residues	Atoms				ZeroOcc	AltConf
			Total	C	H	O		
6	B	1	11	3	5	3	0	0

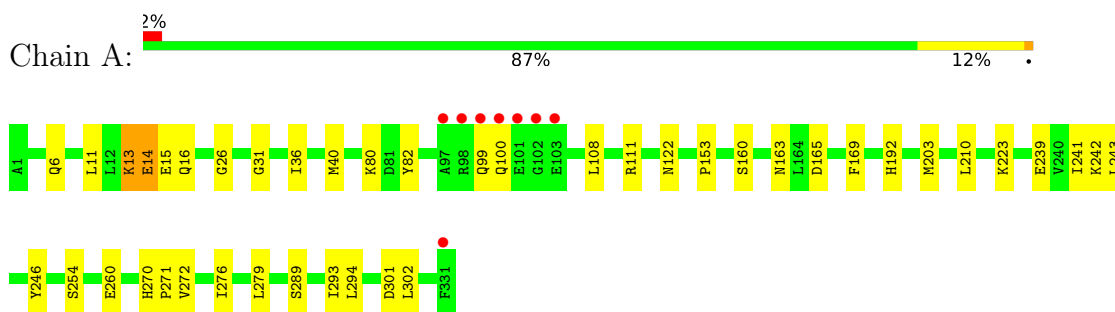
- Molecule 7 is water.

Mol	Chain	Residues	Atoms		ZeroOcc	AltConf
7	A	190	Total	O	0	0
			190	190		
7	B	241	Total	O	0	0
			241	241		
7	C	139	Total	O	0	0
			139	139		
7	D	203	Total	O	0	0
			203	203		

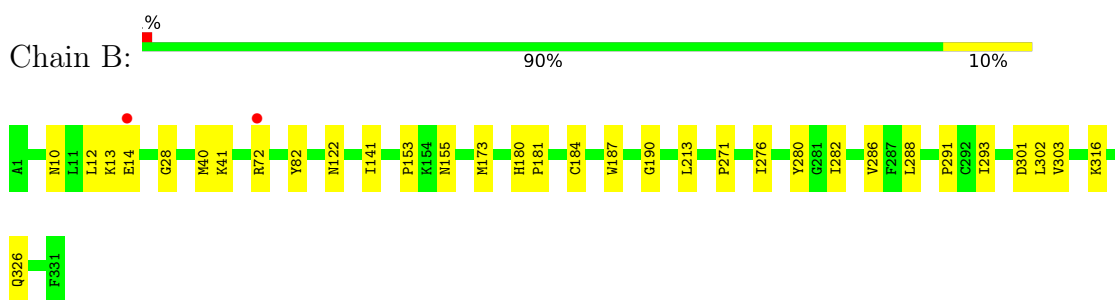
3 Residue-property plots [i](#)

These plots are drawn for all protein, RNA, DNA and oligosaccharide chains in the entry. The first graphic for a chain summarises the proportions of the various outlier classes displayed in the second graphic. The second graphic shows the sequence view annotated by issues in geometry and electron density. Residues are color-coded according to the number of geometric quality criteria for which they contain at least one outlier: green = 0, yellow = 1, orange = 2 and red = 3 or more. A red dot above a residue indicates a poor fit to the electron density ($RSRZ > 2$). Stretches of 2 or more consecutive residues without any outlier are shown as a green connector. Residues present in the sample, but not in the model, are shown in grey.

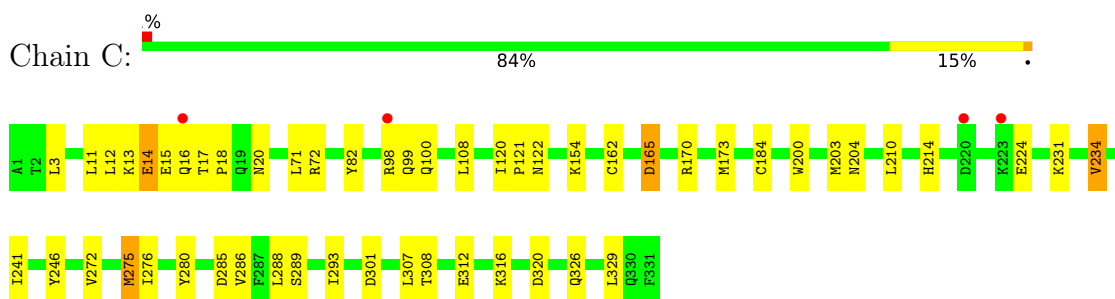
- Molecule 1: L-lactate dehydrogenase A chain



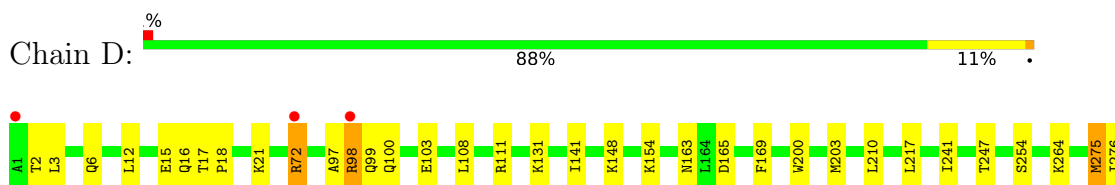
- Molecule 1: L-lactate dehydrogenase A chain



- Molecule 1: L-lactate dehydrogenase A chain



- Molecule 1: L-lactate dehydrogenase A chain





4 Data and refinement statistics

Property	Value	Source
Space group	C 1 2 1	Depositor
Cell constants a, b, c, α , β , γ	168.35Å 81.26Å 120.76Å 90.00° 117.61° 90.00°	Depositor
Resolution (Å)	42.41 – 2.00 42.41 – 2.00	Depositor EDS
% Data completeness (in resolution range)	99.6 (42.41-2.00) 99.6 (42.41-2.00)	Depositor EDS
R_{merge}	(Not available)	Depositor
R_{sym}	0.07	Depositor
$\langle I/\sigma(I) \rangle$ ¹	2.86 (at 2.00Å)	Xtrriage
Refinement program	PHENIX (phenix.refine: 1.8.2_1309)	Depositor
R, R_{free}	0.157 , 0.204 0.157 , (Not available)	Depositor DCC
R_{free} test set	586 reflections (0.60%)	wwPDB-VP
Wilson B-factor (Å ²)	29.6	Xtrriage
Anisotropy	0.628	Xtrriage
Bulk solvent k_{sol} (e/Å ³), B_{sol} (Å ²)	0.31 , 49.7	EDS
L-test for twinning ²	$\langle L \rangle = 0.51$, $\langle L^2 \rangle = 0.34$	Xtrriage
Estimated twinning fraction	No twinning to report.	Xtrriage
F_o, F_c correlation	0.97	EDS
Total number of atoms	11548	wwPDB-VP
Average B, all atoms (Å ²)	40.0	wwPDB-VP

Xtrriage's analysis on translational NCS is as follows: *The largest off-origin peak in the Patterson function is 4.10% of the height of the origin peak. No significant pseudotranslation is detected.*

¹Intensities estimated from amplitudes.

²Theoretical values of $\langle |L| \rangle$, $\langle L^2 \rangle$ for acentric reflections are 0.5, 0.333 respectively for untwinned datasets, and 0.375, 0.2 for perfectly twinned datasets.

5 Model quality [i](#)

5.1 Standard geometry [i](#)

Bond lengths and bond angles in the following residue types are not validated in this section: EPE, 36U, LAC, NAI, SO4

The Z score for a bond length (or angle) is the number of standard deviations the observed value is removed from the expected value. A bond length (or angle) with $|Z| > 5$ is considered an outlier worth inspection. RMSZ is the root-mean-square of all Z scores of the bond lengths (or angles).

Mol	Chain	Bond lengths		Bond angles	
		RMSZ	# Z >5	RMSZ	# Z >5
1	A	0.32	0/2666	0.49	0/3603
1	B	0.36	0/2708	0.51	0/3660
1	C	0.29	0/2686	0.46	0/3628
1	D	0.34	0/2662	0.50	0/3596
All	All	0.33	0/10722	0.49	0/14487

There are no bond length outliers.

There are no bond angle outliers.

There are no chirality outliers.

There are no planarity outliers.

5.2 Too-close contacts [i](#)

In the following table, the Non-H and H(model) columns list the number of non-hydrogen atoms and hydrogen atoms in the chain respectively. The H(added) column lists the number of hydrogen atoms added and optimized by MolProbity. The Clashes column lists the number of clashes within the asymmetric unit, whereas Symm-Clashes lists symmetry-related clashes.

Mol	Chain	Non-H	H(model)	H(added)	Clashes	Symm-Clashes
1	A	2601	0	2702	37	0
1	B	2635	0	2751	37	0
1	C	2615	0	2733	45	0
1	D	2600	0	2716	37	0
2	A	44	0	26	0	0
2	B	44	0	26	1	0
2	C	44	0	26	0	0
2	D	44	0	26	0	0
3	A	15	0	17	1	0

Continued on next page...

Continued from previous page...

Mol	Chain	Non-H	H(model)	H(added)	Clashes	Symm-Clashes
3	B	15	0	17	2	0
3	C	15	0	17	2	0
4	A	5	0	0	0	0
4	B	5	0	0	0	0
4	C	5	0	0	0	0
4	D	5	0	0	0	0
5	A	24	0	12	0	0
5	C	24	0	12	3	0
5	D	24	0	12	0	0
6	B	6	5	0	0	0
7	A	190	0	0	3	0
7	B	241	0	0	4	0
7	C	139	0	0	1	0
7	D	203	0	0	2	0
All	All	11543	5	11093	145	0

The all-atom clashscore is defined as the number of clashes found per 1000 atoms (including hydrogen atoms). The all-atom clashscore for this structure is 7.

All (145) close contacts within the same asymmetric unit are listed below, sorted by their clash magnitude.

Atom-1	Atom-2	Interatomic distance (Å)	Clash overlap (Å)
1:B:173[B]:MET:HE2	1:B:184:CYS:HB3	1.30	1.12
1:B:302:LEU:HD13	1:C:11:LEU:HD11	1.37	1.04
1:A:14:GLU:HB3	1:A:15:GLU:HB2	1.49	0.93
1:A:14:GLU:HB3	1:A:15:GLU:CB	1.99	0.93
1:A:14:GLU:HB3	1:A:15:GLU:CA	1.97	0.91
1:C:276:ILE:HD11	1:C:286[B]:VAL:HG23	1.52	0.91
1:B:13:LYS:HA	1:B:13:LYS:HE2	1.55	0.89
1:C:154[B]:LYS:HE2	1:C:275[B]:MET:HG2	1.60	0.84
1:D:203[A]:MET:HE1	1:D:217:LEU:HD21	1.62	0.79
1:D:98:ARG:HD2	1:D:98:ARG:H	1.47	0.78
1:C:154[B]:LYS:HG3	3:C:802:EPE:O2S	1.84	0.78
1:C:293:ILE:HD12	1:C:301:ASP:HB2	1.68	0.74
1:A:14:GLU:HB3	1:A:15:GLU:HA	1.67	0.74
1:B:173[B]:MET:CE	1:B:184:CYS:HB3	2.16	0.72
1:A:276:ILE:CD1	1:A:279:LEU:HD12	2.20	0.72
1:C:71:LEU:O	1:C:72[B]:ARG:HD3	1.89	0.71
1:B:326:GLN:OE1	7:B:948:HOH:O	2.07	0.71
1:A:6[B]:GLN:CD	1:B:213[B]:LEU:HG	2.12	0.70
1:A:11:LEU:HD23	1:D:154[A]:LYS:HG3	1.72	0.70

Continued on next page...

Continued from previous page...

Atom-1	Atom-2	Interatomic distance (Å)	Clash overlap (Å)
1:C:276:ILE:CD1	1:C:286[B]:VAL:HG23	2.25	0.67
1:A:276:ILE:HD11	1:A:279:LEU:HD12	1.76	0.66
1:A:223:LYS:HG3	7:A:1090:HOH:O	1.95	0.66
1:D:203[A]:MET:CE	1:D:217:LEU:HD21	2.29	0.63
1:A:163:ASN:OD1	1:A:254[B]:SER:OG	2.17	0.62
1:B:280:TYR:O	1:B:316:LYS:HE3	2.01	0.61
1:B:153:PRO:HA	3:B:802:EPE:H91	1.82	0.60
1:B:276:ILE:HD13	1:B:282:ILE:HD12	1.83	0.60
1:C:15:GLU:HG2	1:C:16:GLN:H	1.67	0.60
1:A:153:PRO:HA	3:A:802:EPE:H92	1.84	0.58
1:C:72[A]:ARG:NH1	7:C:1027:HOH:O	2.36	0.58
1:A:169:PHE:HZ	1:A:203:MET:HE1	1.69	0.58
1:B:276:ILE:HD13	1:B:282:ILE:CD1	2.33	0.58
1:C:120:ILE:HB	1:C:121:PRO:HD3	1.86	0.58
1:A:16:GLN:HB2	1:D:296:GLN:NE2	2.19	0.57
1:C:154[B]:LYS:CE	1:C:275[B]:MET:HG2	2.33	0.57
1:A:14:GLU:CB	1:A:15:GLU:HA	2.31	0.54
1:D:293[A]:ILE:HD12	1:D:301:ASP:HB2	1.88	0.54
1:B:41:LYS:NZ	7:B:1100:HOH:O	2.41	0.54
1:A:276:ILE:HD12	1:A:279:LEU:HD12	1.89	0.53
1:D:99:GLN:HB2	1:D:108:LEU:HD22	1.90	0.53
1:C:231:LYS:O	1:C:234:VAL:HG13	2.08	0.53
1:C:316:LYS:HE2	1:C:320:ASP:OD1	2.08	0.53
1:B:155:ASN:ND2	1:C:12:LEU:HD11	2.24	0.52
1:A:13:LYS:HE2	7:A:1079:HOH:O	2.10	0.52
1:D:276:ILE:HD11	1:D:279:LEU:HD12	1.90	0.52
1:C:154[B]:LYS:HE3	3:C:802:EPE:O1S	2.10	0.52
1:C:280:TYR:HB3	1:C:312[A]:GLU:HG3	1.92	0.52
1:A:36:ILE:O	1:A:40[A]:MET:HG2	2.09	0.52
1:B:28:GLY:HA3	2:B:801:NAI:O5B	2.10	0.51
1:C:326:GLN:HA	1:C:329:LEU:HG	1.92	0.51
1:A:163:ASN:HA	1:A:271:PRO:HG2	1.92	0.51
1:A:241:ILE:CD1	1:A:246:TYR:HA	2.41	0.51
1:C:13:LYS:HG3	1:C:14:GLU:N	2.25	0.51
1:A:203:MET:HG2	1:A:210:LEU:HD22	1.93	0.50
1:C:214:HIS:HB2	1:D:3:LEU:HD13	1.94	0.50
1:D:97:ALA:HB1	1:D:111:ARG:NH1	2.27	0.50
1:D:2:THR:O	1:D:6:GLN:HG3	2.12	0.49
1:C:170:ARG:HA	1:C:173[B]:MET:CE	2.42	0.49
1:B:293:ILE:HD12	1:B:301:ASP:HB2	1.94	0.49
1:B:276:ILE:CD1	1:B:282:ILE:HG21	2.43	0.49

Continued on next page...

Continued from previous page...

Atom-1	Atom-2	Interatomic distance (Å)	Clash overlap (Å)
1:D:163:ASN:OD1	1:D:254[B]:SER:OG	2.31	0.49
1:B:180:HIS:ND1	1:B:181:PRO:HD2	2.29	0.48
1:A:82:TYR:CG	1:A:122:ASN:HB3	2.49	0.48
1:A:99:GLN:CD	1:A:108:LEU:HD22	2.34	0.48
7:A:985:HOH:O	1:D:154[A]:LYS:HD2	2.13	0.48
1:D:100:GLN:HB2	1:D:103:GLU:HB2	1.96	0.48
1:B:13:LYS:HA	1:B:13:LYS:CE	2.36	0.48
1:B:302:LEU:CD1	1:C:11:LEU:HD11	2.26	0.48
1:A:80:LYS:HE2	1:A:80:LYS:HB3	1.55	0.47
1:D:203[A]:MET:CE	1:D:210:LEU:HD22	2.44	0.47
1:D:276:ILE:CD1	1:D:279:LEU:HD12	2.44	0.47
1:B:155:ASN:CG	1:C:12:LEU:HD11	2.35	0.47
1:A:169:PHE:CZ	1:A:203:MET:HE1	2.48	0.47
1:C:173[A]:MET:SD	1:C:184:CYS:HB3	2.55	0.47
1:B:72[A]:ARG:NH1	7:B:982:HOH:O	2.48	0.47
1:C:170:ARG:HA	1:C:173[B]:MET:HE2	1.97	0.47
1:B:276:ILE:HD11	1:B:286:VAL:HG13	1.97	0.46
1:C:13:LYS:HG3	1:C:14:GLU:H	1.80	0.46
1:B:141[B]:ILE:HD13	7:B:948:HOH:O	2.15	0.46
1:C:280:TYR:CE1	1:C:307:LEU:HD12	2.51	0.46
5:C:804:36U:H8	5:C:804:36U:CL2	2.53	0.45
1:C:71:LEU:C	1:C:72[B]:ARG:HD3	2.35	0.45
1:A:100:GLN:HG2	1:A:111:ARG:NH1	2.32	0.45
1:A:40[B]:MET:HE1	1:B:40:MET:HB2	1.98	0.45
1:D:98:ARG:HD2	1:D:98:ARG:N	2.23	0.45
1:D:154[B]:LYS:HE2	1:D:275:MET:HE3	1.98	0.45
1:D:98:ARG:H	1:D:98:ARG:CD	2.12	0.45
1:D:148:LYS:HE3	1:D:148:LYS:HB3	1.86	0.45
1:D:169:PHE:HZ	1:D:203[B]:MET:SD	2.40	0.44
1:C:275[A]:MET:HE1	1:C:285:ASP:OD1	2.17	0.44
1:D:264:LYS:HB3	7:D:1076:HOH:O	2.17	0.44
1:A:239:GLU:O	1:A:243:LEU:HG	2.18	0.44
1:B:72[B]:ARG:HE	1:B:72[B]:ARG:HB2	1.53	0.44
1:A:6[B]:GLN:CG	1:B:213[B]:LEU:HG	2.48	0.44
1:B:180:HIS:CG	1:B:181:PRO:HD2	2.53	0.43
1:C:200:TRP:CE3	1:C:203[B]:MET:SD	3.11	0.43
1:D:72[A]:ARG:HE	1:D:72[A]:ARG:HB2	1.63	0.43
1:D:200:TRP:CE3	1:D:203[B]:MET:SD	3.12	0.43
1:B:276:ILE:HD11	1:B:286:VAL:CG1	2.49	0.43
1:C:3:LEU:HD21	1:D:210:LEU:HD23	2.00	0.43
1:B:155:ASN:CB	1:C:12:LEU:HD11	2.49	0.43

Continued on next page...

Continued from previous page...

Atom-1	Atom-2	Interatomic distance (Å)	Clash overlap (Å)
1:B:82:TYR:CG	1:B:122:ASN:HB3	2.53	0.43
3:B:802:EPE:H22	3:B:802:EPE:H102	1.60	0.43
1:D:131:LYS:N	1:D:131:LYS:HD3	2.34	0.43
1:B:10:ASN:ND2	1:B:13:LYS:HE3	2.34	0.42
1:B:276:ILE:C	1:B:276:ILE:HD12	2.39	0.42
1:A:260:GLU:OE2	1:D:72[B]:ARG:HD3	2.19	0.42
1:B:187:TRP:CZ3	1:B:271:PRO:HD3	2.54	0.42
1:C:224:GLU:OE2	1:D:3:LEU:N	2.44	0.42
1:D:15:GLU:HG3	1:D:16:GLN:N	2.34	0.42
1:B:288:LEU:HD12	1:B:288:LEU:C	2.40	0.42
1:A:26:GLY:O	1:A:31:GLY:HA3	2.20	0.42
5:C:804:36U:CL2	5:C:804:36U:H1	2.56	0.42
1:D:241:ILE:HD11	1:D:247:THR:HG23	2.02	0.42
1:B:190:GLY:HA2	1:B:288:LEU:HD13	2.01	0.42
1:C:98:ARG:O	1:C:100:GLN:NE2	2.53	0.42
1:A:270:HIS:CD2	1:A:294:LEU:HD12	2.55	0.42
1:C:276:ILE:HG12	1:C:288:LEU:HB2	2.01	0.42
5:C:804:36U:C2	5:C:804:36U:H3	2.50	0.42
1:A:302:LEU:C	1:A:302:LEU:HD12	2.40	0.41
1:A:272:VAL:O	1:A:289:SER:HA	2.20	0.41
1:B:302:LEU:HD13	1:C:11:LEU:CD1	2.27	0.41
1:D:141:ILE:CG1	1:D:322:LEU:HD22	2.50	0.41
1:B:276:ILE:HD11	1:B:282:ILE:HG21	2.03	0.41
1:C:108:LEU:C	1:C:108:LEU:HD13	2.41	0.41
1:A:276:ILE:HD12	1:A:276:ILE:HA	1.84	0.41
1:B:291:PRO:HB2	1:B:303:VAL:HB	2.02	0.41
1:C:99:GLN:HB2	1:C:108:LEU:HG	2.03	0.41
1:D:18:PRO:HB2	1:D:21:LYS:HB2	2.03	0.41
1:D:72[B]:ARG:NH2	7:D:993:HOH:O	2.54	0.41
1:C:241:ILE:CD1	1:C:246:TYR:HA	2.51	0.41
1:C:162:CYS:HA	1:C:165:ASP:OD2	2.20	0.41
1:D:203[A]:MET:HE2	1:D:210:LEU:HB2	2.03	0.41
1:D:203[A]:MET:CE	1:D:217:LEU:HD11	2.51	0.41
1:C:82:TYR:CG	1:C:122:ASN:HB3	2.56	0.40
1:C:272:VAL:O	1:C:289:SER:HA	2.20	0.40
1:C:308:THR:O	1:C:312[B]:GLU:HG3	2.20	0.40
1:A:14:GLU:CB	1:A:15:GLU:HB2	2.35	0.40
1:A:165:ASP:OD2	1:A:192:HIS:ND1	2.51	0.40
1:C:241:ILE:HD13	1:C:246:TYR:HA	2.01	0.40
1:D:241:ILE:CD1	1:D:247:THR:HG23	2.51	0.40
1:A:293:ILE:HD12	1:A:301:ASP:HB2	2.03	0.40

Continued on next page...

Continued from previous page...

Atom-1	Atom-2	Interatomic distance (Å)	Clash overlap (Å)
1:C:17:THR:HG22	1:C:18:PRO:O	2.21	0.40
1:C:204:ASN:HA	1:C:210:LEU:HD13	2.02	0.40

There are no symmetry-related clashes.

5.3 Torsion angles [i](#)

5.3.1 Protein backbone [i](#)

In the following table, the Percentiles column shows the percent Ramachandran outliers of the chain as a percentile score with respect to all X-ray entries followed by that with respect to entries of similar resolution.

The Analysed column shows the number of residues for which the backbone conformation was analysed, and the total number of residues.

Mol	Chain	Analysed	Favoured	Allowed	Outliers	Percentiles	
1	A	336/331 (102%)	325 (97%)	10 (3%)	1 (0%)	41	37
1	B	339/331 (102%)	330 (97%)	8 (2%)	1 (0%)	41	37
1	C	338/331 (102%)	331 (98%)	6 (2%)	1 (0%)	41	37
1	D	335/331 (101%)	328 (98%)	7 (2%)	0	100	100
All	All	1348/1324 (102%)	1314 (98%)	31 (2%)	3 (0%)	47	44

All (3) Ramachandran outliers are listed below:

Mol	Chain	Res	Type
1	C	14	GLU
1	A	14	GLU
1	B	14	GLU

5.3.2 Protein sidechains [i](#)

In the following table, the Percentiles column shows the percent sidechain outliers of the chain as a percentile score with respect to all X-ray entries followed by that with respect to entries of similar resolution.

The Analysed column shows the number of residues for which the sidechain conformation was analysed, and the total number of residues.

Mol	Chain	Analysed	Rotameric	Outliers	Percentiles	
1	A	294/287 (102%)	291 (99%)	3 (1%)	76	81
1	B	297/287 (104%)	296 (100%)	1 (0%)	92	95
1	C	296/287 (103%)	291 (98%)	5 (2%)	60	65
1	D	293/287 (102%)	286 (98%)	7 (2%)	49	51
All	All	1180/1148 (103%)	1164 (99%)	16 (1%)	71	72

All (16) residues with a non-rotameric sidechain are listed below:

Mol	Chain	Res	Type
1	A	13	LYS
1	A	160	SER
1	A	242	LYS
1	B	12	LEU
1	C	20	ASN
1	C	165	ASP
1	C	234	VAL
1	C	275[A]	MET
1	C	275[B]	MET
1	D	12	LEU
1	D	17	THR
1	D	72[A]	ARG
1	D	72[B]	ARG
1	D	98	ARG
1	D	165	ASP
1	D	275	MET

Sometimes sidechains can be flipped to improve hydrogen bonding and reduce clashes. All (1) such sidechains are listed below:

Mol	Chain	Res	Type
1	B	326	GLN

5.3.3 RNA [i](#)

There are no RNA molecules in this entry.

5.4 Non-standard residues in protein, DNA, RNA chains [i](#)

There are no non-standard protein/DNA/RNA residues in this entry.

5.5 Carbohydrates [i](#)

There are no monosaccharides in this entry.

5.6 Ligand geometry [i](#)

15 ligands are modelled in this entry.

In the following table, the Counts columns list the number of bonds (or angles) for which Mogul statistics could be retrieved, the number of bonds (or angles) that are observed in the model and the number of bonds (or angles) that are defined in the Chemical Component Dictionary. The Link column lists molecule types, if any, to which the group is linked. The Z score for a bond length (or angle) is the number of standard deviations the observed value is removed from the expected value. A bond length (or angle) with $|Z| > 2$ is considered an outlier worth inspection. RMSZ is the root-mean-square of all Z scores of the bond lengths (or angles).

Mol	Type	Chain	Res	Link	Bond lengths			Bond angles		
					Counts	RMSZ	# Z > 2	Counts	RMSZ	# Z > 2
3	EPE	C	802	-	15,15,15	0.84	1 (6%)	18,20,20	1.95	5 (27%)
4	SO4	A	803	-	4,4,4	0.12	0	6,6,6	0.14	0
4	SO4	C	803	-	4,4,4	0.13	0	6,6,6	0.17	0
4	SO4	D	802	-	4,4,4	0.10	0	6,6,6	0.16	0
3	EPE	B	802	-	15,15,15	0.83	1 (6%)	18,20,20	1.81	5 (27%)
5	36U	D	803	-	26,26,26	0.68	0	32,37,37	1.35	3 (9%)
5	36U	A	804	-	26,26,26	0.71	0	32,37,37	1.31	4 (12%)
4	SO4	B	804	-	4,4,4	0.16	0	6,6,6	0.20	0
2	NAI	A	801	-	42,48,48	1.97	12 (28%)	47,73,73	1.29	6 (12%)
2	NAI	C	801	-	42,48,48	2.04	11 (26%)	47,73,73	1.31	8 (17%)
5	36U	C	804	-	26,26,26	0.59	0	32,37,37	1.39	4 (12%)
6	LAC	B	803	-	5,5,5	0.89	0	4,6,6	1.09	0
2	NAI	B	801	-	42,48,48	1.91	10 (23%)	47,73,73	1.37	6 (12%)
2	NAI	D	801	-	42,48,48	1.97	10 (23%)	47,73,73	1.31	5 (10%)
3	EPE	A	802	-	15,15,15	0.77	1 (6%)	18,20,20	1.84	5 (27%)

In the following table, the Chirals column lists the number of chiral outliers, the number of chiral centers analysed, the number of these observed in the model and the number defined in the Chemical Component Dictionary. Similar counts are reported in the Torsion and Rings columns. '-' means no outliers of that kind were identified.

Mol	Type	Chain	Res	Link	Chirals	Torsions	Rings
3	EPE	C	802	-	-	6/9/19/19	0/1/1/1
3	EPE	B	802	-	-	1/9/19/19	0/1/1/1

Continued on next page...

Continued from previous page...

Mol	Type	Chain	Res	Link	Chirals	Torsions	Rings
5	36U	D	803	-	-	1/8/24/24	0/3/3/3
5	36U	A	804	-	-	0/8/24/24	0/3/3/3
5	36U	C	804	-	-	1/8/24/24	0/3/3/3
2	NAI	A	801	-	-	5/25/72/72	0/5/5/5
2	NAI	C	801	-	-	7/25/72/72	0/5/5/5
6	LAC	B	803	-	-	4/4/4/4	-
2	NAI	B	801	-	-	5/25/72/72	0/5/5/5
2	NAI	D	801	-	-	6/25/72/72	0/5/5/5
3	EPE	A	802	-	-	3/9/19/19	0/1/1/1

All (46) bond length outliers are listed below:

Mol	Chain	Res	Type	Atoms	Z	Observed(Å)	Ideal(Å)
2	C	801	NAI	C4N-C3N	-4.79	1.40	1.49
2	D	801	NAI	C4N-C3N	-4.72	1.40	1.49
2	B	801	NAI	C4N-C3N	-4.69	1.40	1.49
2	C	801	NAI	C2B-C3B	-4.64	1.40	1.53
2	A	801	NAI	C4N-C3N	-4.58	1.40	1.49
2	A	801	NAI	C2B-C3B	-4.55	1.40	1.53
2	D	801	NAI	C2B-C3B	-4.50	1.41	1.53
2	B	801	NAI	C6N-C5N	4.38	1.41	1.33
2	B	801	NAI	C2B-C3B	-4.27	1.41	1.53
2	C	801	NAI	C6N-C5N	4.24	1.40	1.33
2	A	801	NAI	C6N-C5N	4.14	1.40	1.33
2	D	801	NAI	C6N-C5N	4.08	1.40	1.33
2	C	801	NAI	C7N-N7N	3.88	1.43	1.33
2	D	801	NAI	C7N-N7N	3.75	1.43	1.33
2	B	801	NAI	C7N-N7N	3.52	1.42	1.33
2	A	801	NAI	C7N-N7N	3.39	1.42	1.33
2	C	801	NAI	C6A-N6A	3.36	1.46	1.34
2	C	801	NAI	O2D-C2D	-3.32	1.35	1.43
2	D	801	NAI	O2D-C2D	-3.24	1.35	1.43
2	A	801	NAI	C6A-N6A	3.20	1.45	1.34
2	D	801	NAI	C6A-N6A	3.16	1.45	1.34
2	C	801	NAI	C4N-C5N	-3.14	1.40	1.48
2	A	801	NAI	C4N-C5N	-3.12	1.40	1.48
2	A	801	NAI	O2D-C2D	-3.10	1.35	1.43
2	D	801	NAI	C4N-C5N	-3.09	1.40	1.48
2	B	801	NAI	C6A-N6A	3.07	1.45	1.34
3	C	802	EPE	C10-S	2.92	1.81	1.77
2	B	801	NAI	O2D-C2D	-2.90	1.36	1.43

Continued on next page...

Continued from previous page...

Mol	Chain	Res	Type	Atoms	Z	Observed(Å)	Ideal(Å)
2	C	801	NAI	C2B-C1B	-2.89	1.49	1.53
2	B	801	NAI	C4N-C5N	-2.81	1.41	1.48
2	A	801	NAI	C2B-C1B	-2.74	1.49	1.53
3	B	802	EPE	C10-S	2.73	1.81	1.77
2	D	801	NAI	C2B-C1B	-2.62	1.49	1.53
3	A	802	EPE	C10-S	2.61	1.81	1.77
2	D	801	NAI	C5D-C4D	-2.56	1.43	1.51
2	C	801	NAI	C5D-C4D	-2.54	1.43	1.51
2	A	801	NAI	C5D-C4D	-2.52	1.43	1.51
2	B	801	NAI	C2B-C1B	-2.45	1.50	1.53
2	B	801	NAI	C5D-C4D	-2.33	1.44	1.51
2	B	801	NAI	O4B-C4B	-2.19	1.40	1.45
2	A	801	NAI	C2N-C3N	2.16	1.41	1.34
2	C	801	NAI	O4B-C4B	-2.13	1.40	1.45
2	C	801	NAI	C5B-C4B	-2.13	1.45	1.51
2	A	801	NAI	C2D-C3D	-2.06	1.47	1.53
2	D	801	NAI	C2D-C3D	-2.04	1.47	1.53
2	A	801	NAI	C3D-C4D	-2.01	1.47	1.53

All (51) bond angle outliers are listed below:

Mol	Chain	Res	Type	Atoms	Z	Observed(°)	Ideal(°)
3	C	802	EPE	C5-N4-C3	4.78	119.58	108.83
2	B	801	NAI	N3A-C2A-N1A	-4.70	121.33	128.68
2	C	801	NAI	N3A-C2A-N1A	-4.52	121.62	128.68
2	A	801	NAI	N3A-C2A-N1A	-4.48	121.68	128.68
3	A	802	EPE	C5-N4-C3	4.47	118.89	108.83
2	D	801	NAI	N3A-C2A-N1A	-4.26	122.02	128.68
5	C	804	36U	C22-C16-C17	3.79	119.28	114.91
3	B	802	EPE	C5-N4-C3	3.62	116.99	108.83
5	D	803	36U	O1-C2-C3	3.59	119.17	113.28
3	B	802	EPE	C7-N4-C3	3.57	120.36	111.23
3	B	802	EPE	C7-N4-C5	3.50	120.18	111.23
5	C	804	36U	O1-C2-C3	3.21	118.55	113.28
5	A	804	36U	O1-C2-C3	3.19	118.51	113.28
5	A	804	36U	C22-C16-C17	3.19	118.59	114.91
3	A	802	EPE	C7-N4-C3	3.17	119.35	111.23
5	D	803	36U	C22-C16-C17	3.12	118.51	114.91
3	C	802	EPE	O1S-S-C10	3.09	110.63	106.92
2	B	801	NAI	O4B-C1B-C2B	-2.94	102.63	106.93
3	C	802	EPE	O3S-S-C10	2.90	110.47	105.77
2	D	801	NAI	O4D-C1D-N1N	2.88	113.68	108.06

Continued on next page...

Continued from previous page...

Mol	Chain	Res	Type	Atoms	Z	Observed(°)	Ideal(°)
3	C	802	EPE	C7-N4-C3	2.86	118.54	111.23
2	C	801	NAI	O5D-C5D-C4D	2.75	118.47	108.99
3	A	802	EPE	O1S-S-C10	2.75	110.22	106.92
3	C	802	EPE	C7-N4-C5	2.73	118.23	111.23
3	A	802	EPE	C7-N4-C5	2.69	118.12	111.23
2	D	801	NAI	O5D-C5D-C4D	2.69	118.23	108.99
2	D	801	NAI	PN-O3-PA	-2.67	123.66	132.83
2	B	801	NAI	PN-O3-PA	-2.62	123.85	132.83
2	A	801	NAI	O4D-C1D-N1N	2.60	113.14	108.06
5	C	804	36U	C15-C14-C13	-2.52	108.03	114.14
2	C	801	NAI	O4D-C1D-N1N	2.51	112.95	108.06
5	A	804	36U	C15-C14-C13	-2.50	108.08	114.14
2	A	801	NAI	PN-O3-PA	-2.44	124.47	132.83
2	B	801	NAI	O5D-C5D-C4D	2.43	117.34	108.99
5	D	803	36U	C15-C14-C13	-2.39	108.35	114.14
2	A	801	NAI	O4B-C1B-C2B	-2.35	103.49	106.93
2	A	801	NAI	O5D-C5D-C4D	2.33	117.01	108.99
2	C	801	NAI	PN-O3-PA	-2.25	125.11	132.83
2	B	801	NAI	C1D-N1N-C2N	-2.21	117.43	121.11
2	D	801	NAI	O5B-C5B-C4B	2.20	116.58	108.99
2	B	801	NAI	O4D-C1D-N1N	2.20	112.36	108.06
3	A	802	EPE	O2S-S-C10	2.18	109.54	106.92
5	A	804	36U	C19-C17-C16	-2.16	119.69	122.39
2	A	801	NAI	O5B-C5B-C4B	2.15	116.41	108.99
3	B	802	EPE	C6-N1-C2	2.15	113.67	108.83
2	C	801	NAI	O5B-C5B-C4B	2.15	116.38	108.99
2	C	801	NAI	C1D-N1N-C2N	-2.10	117.61	121.11
2	C	801	NAI	O4B-C1B-C2B	-2.08	103.88	106.93
2	C	801	NAI	C4A-C5A-N7A	-2.08	107.23	109.40
5	C	804	36U	C19-C17-C16	-2.07	119.80	122.39
3	B	802	EPE	O3S-S-C10	2.03	109.05	105.77

There are no chirality outliers.

All (39) torsion outliers are listed below:

Mol	Chain	Res	Type	Atoms
2	C	801	NAI	C5D-O5D-PN-O3
3	A	802	EPE	C9-C10-S-O2S
3	A	802	EPE	C9-C10-S-O3S
3	C	802	EPE	C10-C9-N1-C2
3	C	802	EPE	C9-C10-S-O1S
6	B	803	LAC	OXT-C-CA-OHN

Continued on next page...

Continued from previous page...

Mol	Chain	Res	Type	Atoms
6	B	803	LAC	O-C-CA-CB
6	B	803	LAC	OXT-C-CA-CB
3	C	802	EPE	C9-C10-S-O3S
6	B	803	LAC	O-C-CA-OHN
5	C	804	36U	C2-C4-S5-C6
3	C	802	EPE	C10-C9-N1-C6
2	B	801	NAI	C2D-C1D-N1N-C2N
2	D	801	NAI	C2D-C1D-N1N-C2N
2	D	801	NAI	C5D-O5D-PN-O3
2	B	801	NAI	O4D-C1D-N1N-C2N
2	C	801	NAI	C5D-O5D-PN-O1N
3	A	802	EPE	C9-C10-S-O1S
3	C	802	EPE	C9-C10-S-O2S
2	C	801	NAI	O4D-C1D-N1N-C2N
2	D	801	NAI	O4D-C1D-N1N-C2N
2	A	801	NAI	C2D-C1D-N1N-C2N
3	B	802	EPE	C8-C7-N4-C5
3	C	802	EPE	N4-C7-C8-O8
2	A	801	NAI	O4D-C1D-N1N-C2N
2	C	801	NAI	C2D-C1D-N1N-C2N
2	B	801	NAI	C2D-C1D-N1N-C6N
2	D	801	NAI	C2D-C1D-N1N-C6N
2	A	801	NAI	O4B-C4B-C5B-O5B
2	A	801	NAI	O4D-C1D-N1N-C6N
2	B	801	NAI	O4D-C1D-N1N-C6N
5	D	803	36U	C3-C15-C16-C17
2	B	801	NAI	O4B-C4B-C5B-O5B
2	C	801	NAI	O4D-C4D-C5D-O5D
2	D	801	NAI	O4D-C1D-N1N-C6N
2	C	801	NAI	O4B-C4B-C5B-O5B
2	D	801	NAI	O4B-C4B-C5B-O5B
2	C	801	NAI	C5D-O5D-PN-O2N
2	A	801	NAI	C2D-C1D-N1N-C6N

There are no ring outliers.

5 monomers are involved in 9 short contacts:

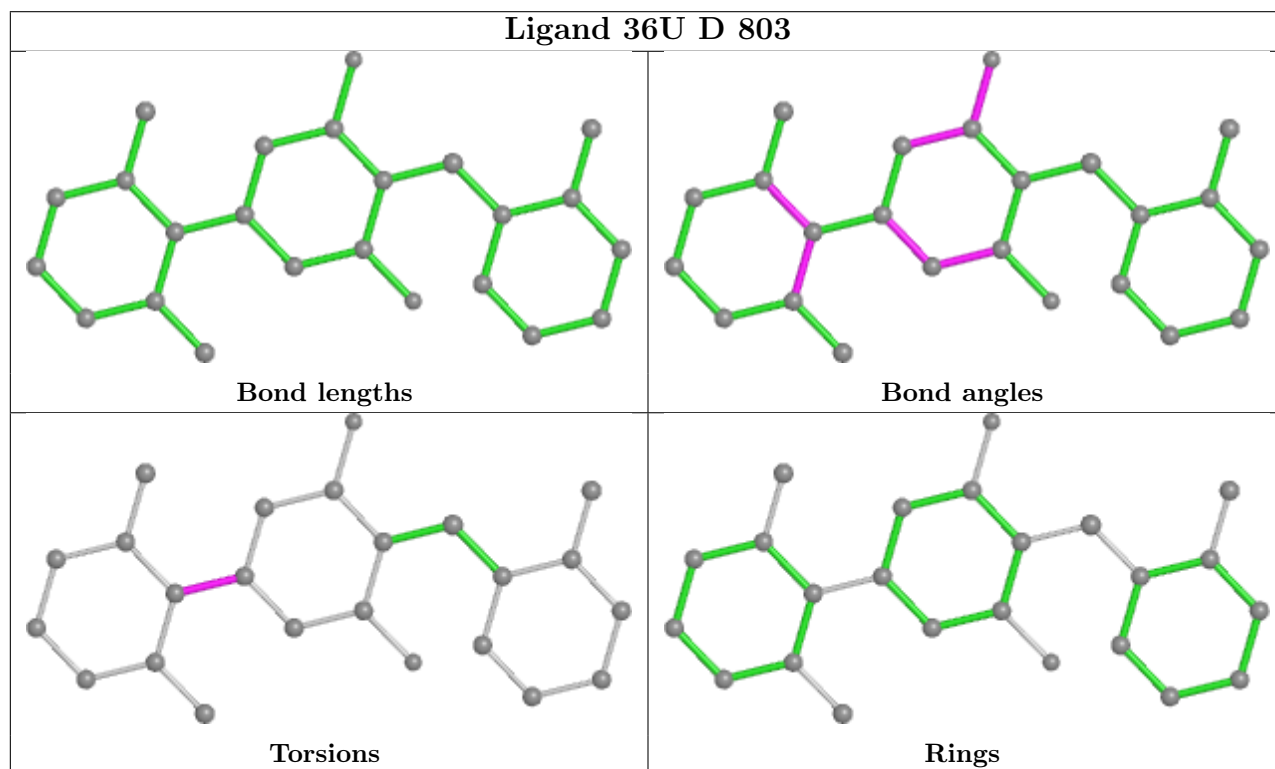
Mol	Chain	Res	Type	Clashes	Symm-Clashes
3	C	802	EPE	2	0
3	B	802	EPE	2	0
5	C	804	36U	3	0
2	B	801	NAI	1	0

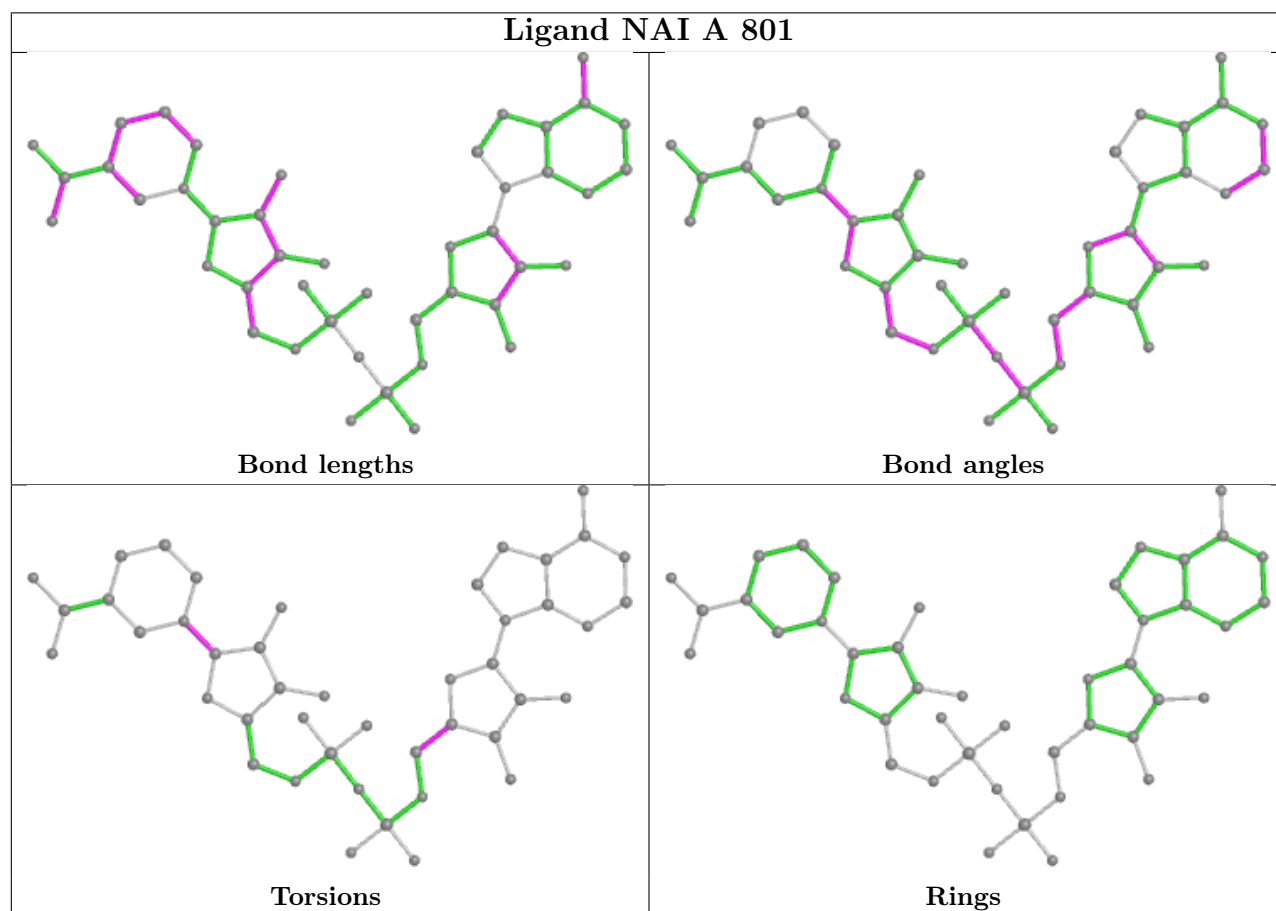
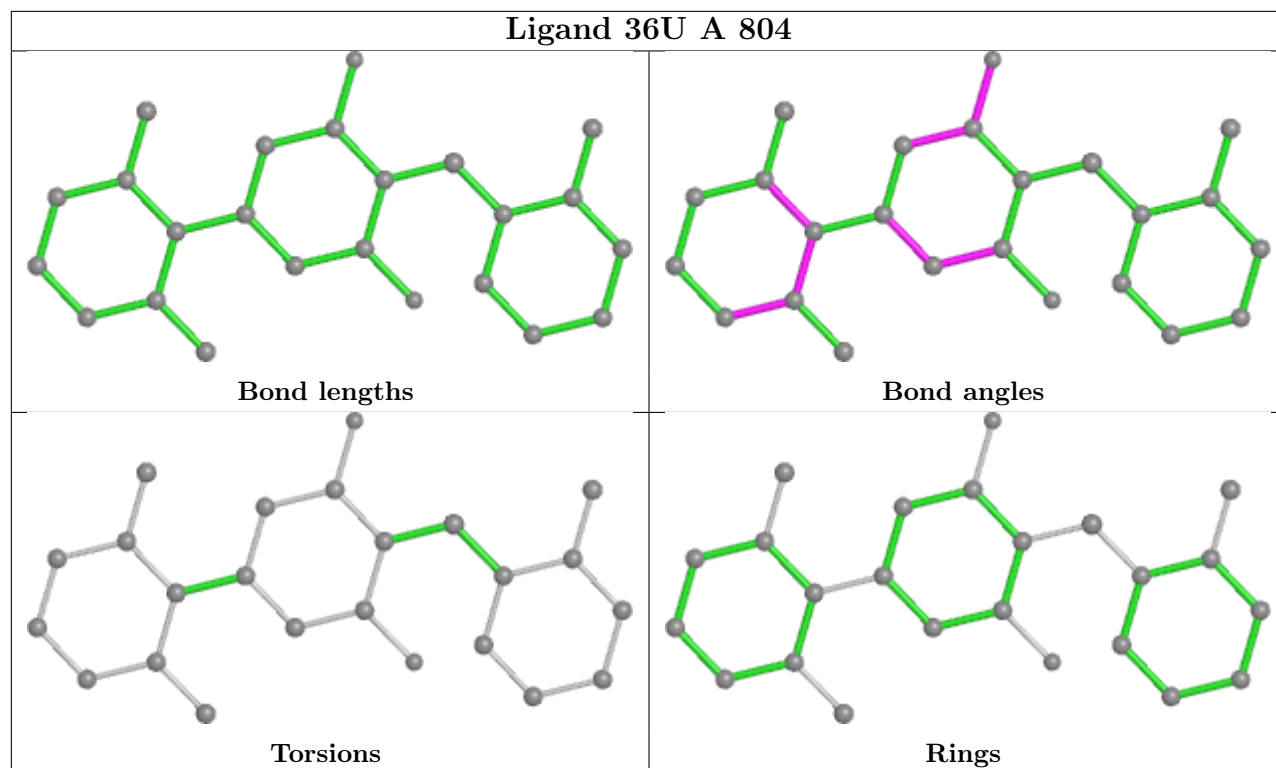
Continued on next page...

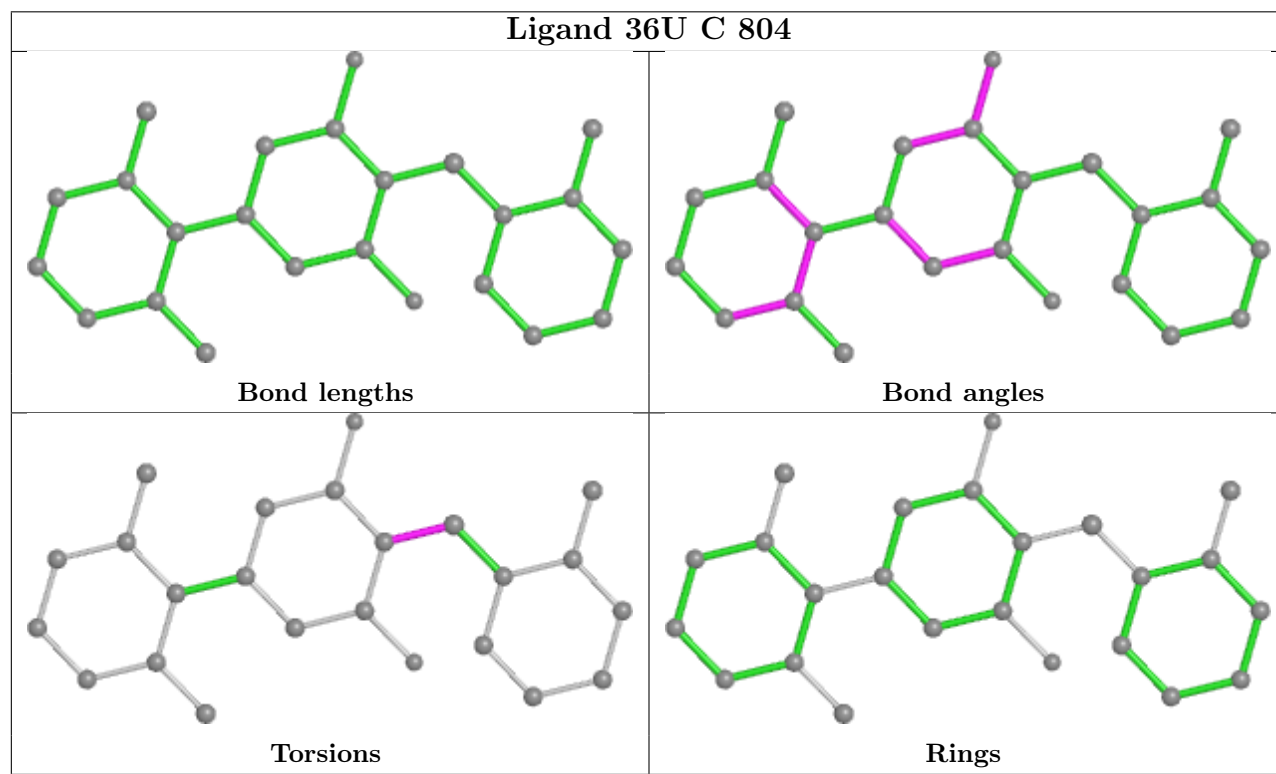
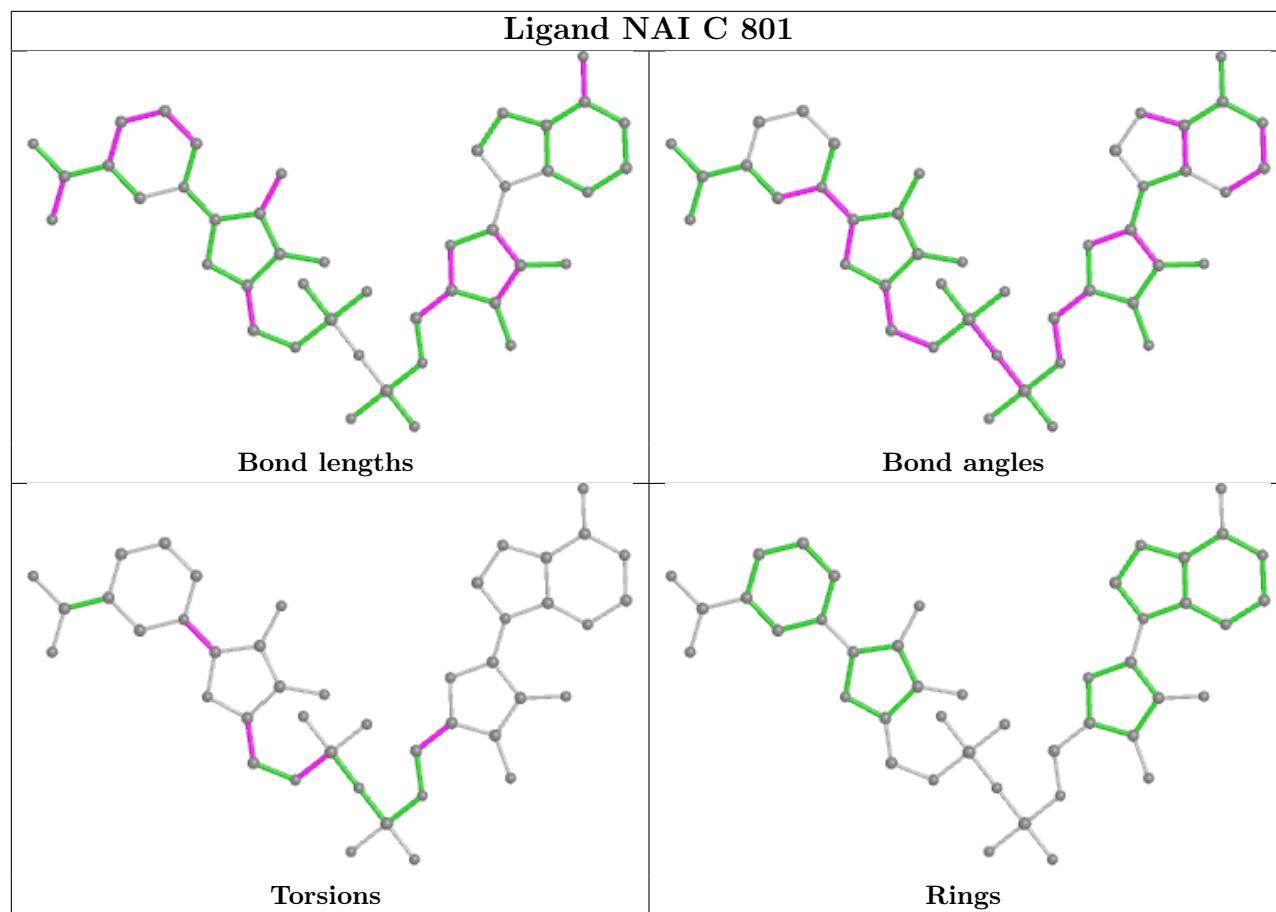
Continued from previous page...

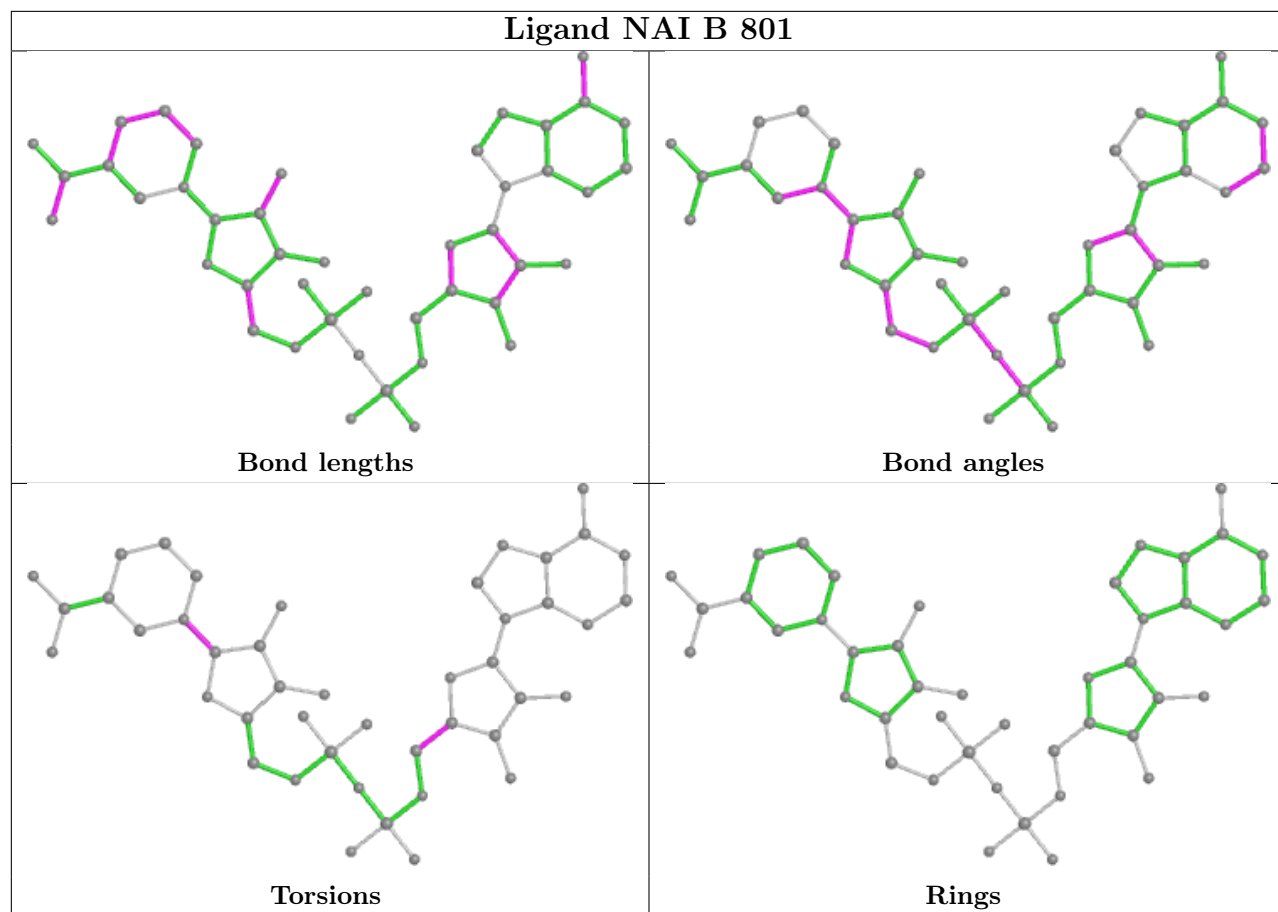
Mol	Chain	Res	Type	Clashes	Symm-Clashes
3	A	802	EPE	1	0

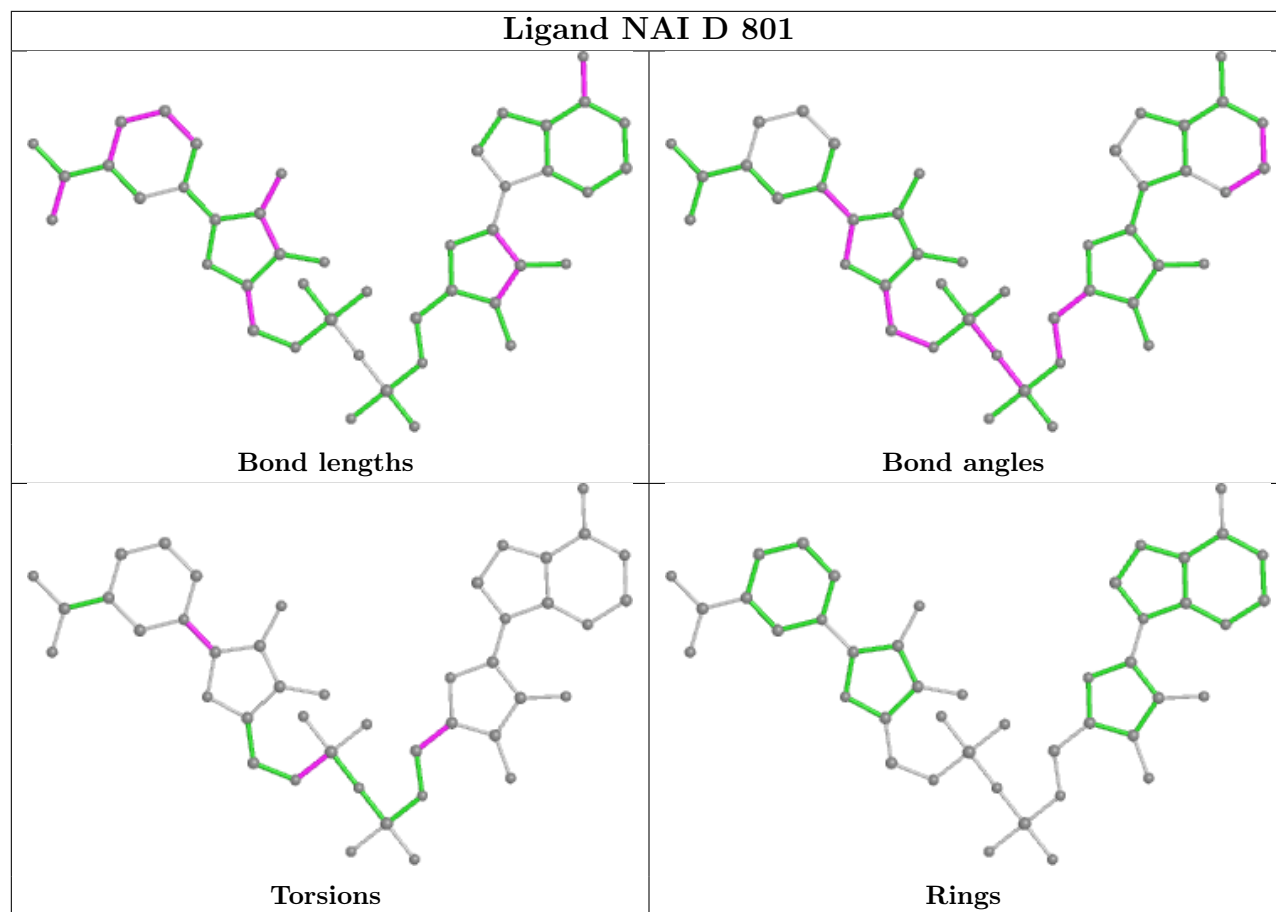
The following is a two-dimensional graphical depiction of Mogul quality analysis of bond lengths, bond angles, torsion angles, and ring geometry for all instances of the Ligand of Interest. In addition, ligands with molecular weight > 250 and outliers as shown on the validation Tables will also be included. For torsion angles, if less than 5% of the Mogul distribution of torsion angles is within 10 degrees of the torsion angle in question, then that torsion angle is considered an outlier. Any bond that is central to one or more torsion angles identified as an outlier by Mogul will be highlighted in the graph. For rings, the root-mean-square deviation (RMSD) between the ring in question and similar rings identified by Mogul is calculated over all ring torsion angles. If the average RMSD is greater than 60 degrees and the minimal RMSD between the ring in question and any Mogul-identified rings is also greater than 60 degrees, then that ring is considered an outlier. The outliers are highlighted in purple. The color gray indicates Mogul did not find sufficient equivalents in the CSD to analyse the geometry.











5.7 Other polymers [i](#)

There are no such residues in this entry.

5.8 Polymer linkage issues [i](#)

There are no chain breaks in this entry.

6 Fit of model and data [i](#)

6.1 Protein, DNA and RNA chains [i](#)

In the following table, the column labelled ‘#RSRZ > 2’ contains the number (and percentage) of RSRZ outliers, followed by percent RSRZ outliers for the chain as percentile scores relative to all X-ray entries and entries of similar resolution. The OWAB column contains the minimum, median, 95th percentile and maximum values of the occupancy-weighted average B-factor per residue. The column labelled ‘Q < 0.9’ lists the number of (and percentage) of residues with an average occupancy less than 0.9.

Mol	Chain	Analysed	<RSRZ>	#RSRZ>2	OWAB(Å ²)	Q<0.9
1	A	331/331 (100%)	-0.53	8 (2%) 59 57	22, 37, 67, 129	0
1	B	331/331 (100%)	-0.77	2 (0%) 89 88	22, 32, 53, 115	0
1	C	331/331 (100%)	-0.47	4 (1%) 79 78	25, 40, 71, 112	0
1	D	331/331 (100%)	-0.70	3 (0%) 84 83	24, 32, 60, 110	0
All	All	1324/1324 (100%)	-0.62	17 (1%) 77 76	22, 35, 65, 129	0

All (17) RSRZ outliers are listed below:

Mol	Chain	Res	Type	RSRZ
1	A	100	GLN	4.9
1	A	98	ARG	4.6
1	B	14	GLU	3.9
1	A	99	GLN	3.8
1	A	101	GLU	3.4
1	A	331	PHE	3.1
1	A	103	GLU	3.0
1	D	1	ALA	2.9
1	D	72[A]	ARG	2.8
1	C	98	ARG	2.7
1	B	72[A]	ARG	2.6
1	A	102	GLY	2.4
1	D	98	ARG	2.3
1	C	220	ASP	2.1
1	C	16	GLN	2.1
1	A	97	ALA	2.1
1	C	223	LYS	2.0

6.2 Non-standard residues in protein, DNA, RNA chains [i](#)

There are no non-standard protein/DNA/RNA residues in this entry.

6.3 Carbohydrates [i](#)

There are no monosaccharides in this entry.

6.4 Ligands [i](#)

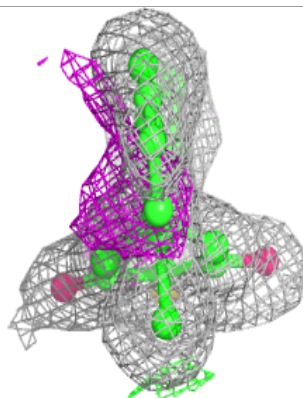
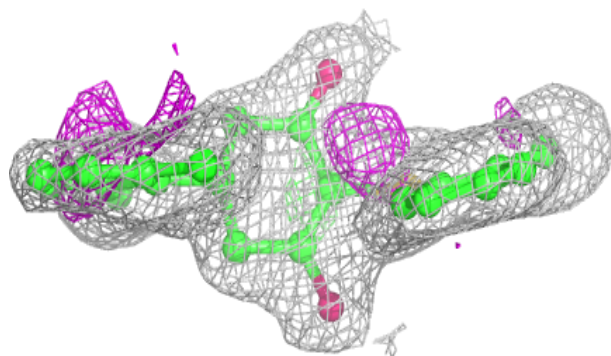
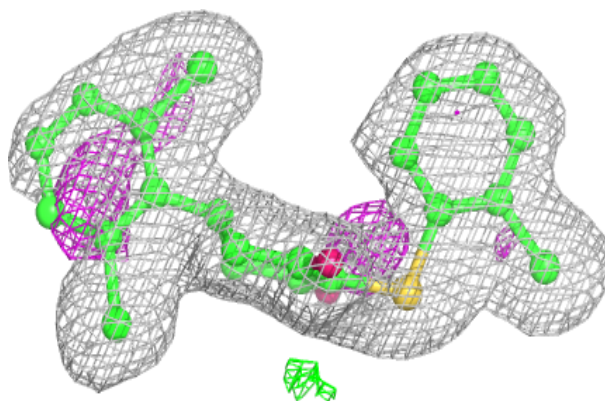
In the following table, the Atoms column lists the number of modelled atoms in the group and the number defined in the chemical component dictionary. The B-factors column lists the minimum, median, 95th percentile and maximum values of B factors of atoms in the group. The column labelled 'Q< 0.9' lists the number of atoms with occupancy less than 0.9.

Mol	Type	Chain	Res	Atoms	RSCC	RSR	B-factors(Å ²)	Q<0.9
3	EPE	A	802	15/15	0.84	0.20	81,86,117,119	0
3	EPE	C	802	15/15	0.85	0.27	78,85,106,107	0
4	SO4	B	804	5/5	0.88	0.18	20,28,34,35	5
4	SO4	C	803	5/5	0.88	0.18	29,36,44,46	5
5	36U	A	804	24/24	0.93	0.14	39,46,62,64	0
3	EPE	B	802	15/15	0.94	0.22	62,120,123,124	0
4	SO4	A	803	5/5	0.95	0.19	36,41,45,47	5
5	36U	D	803	24/24	0.95	0.12	37,50,56,69	0
5	36U	C	804	24/24	0.96	0.12	41,49,57,63	0
2	NAI	D	801	44/44	0.96	0.07	32,41,46,53	0
2	NAI	A	801	44/44	0.97	0.06	31,39,44,49	0
2	NAI	C	801	44/44	0.97	0.07	36,42,46,48	0
6	LAC	B	803	6/6	0.97	0.08	22,27,38,40	0
2	NAI	B	801	44/44	0.98	0.06	21,30,35,37	0
4	SO4	D	802	5/5	0.98	0.20	17,29,31,35	5

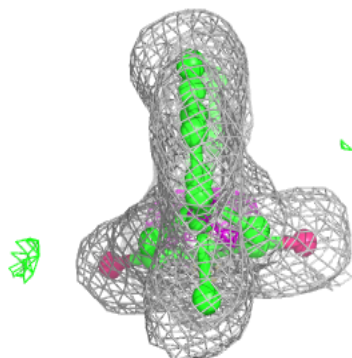
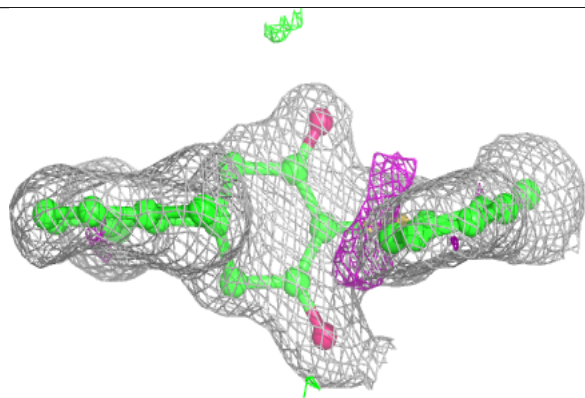
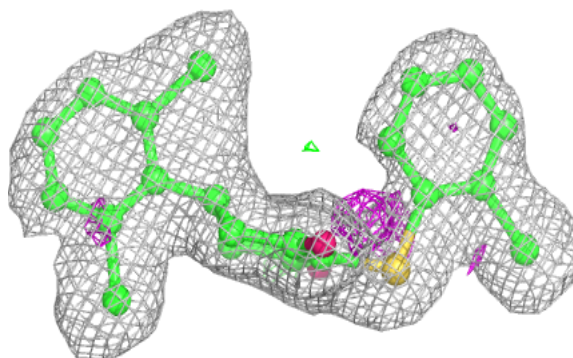
The following is a graphical depiction of the model fit to experimental electron density of all instances of the Ligand of Interest. In addition, ligands with molecular weight > 250 and outliers as shown on the geometry validation Tables will also be included. Each fit is shown from different orientation to approximate a three-dimensional view.

Electron density around 36U A 804:

$2mF_o-DF_c$ (at 0.7 rmsd) in gray
 mF_o-DF_c (at 3 rmsd) in purple (negative)
and green (positive)

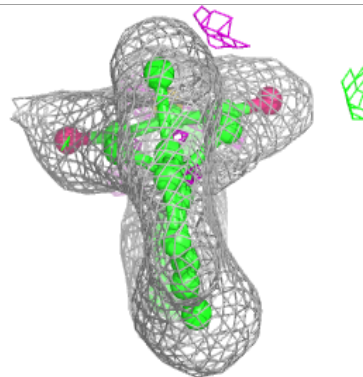
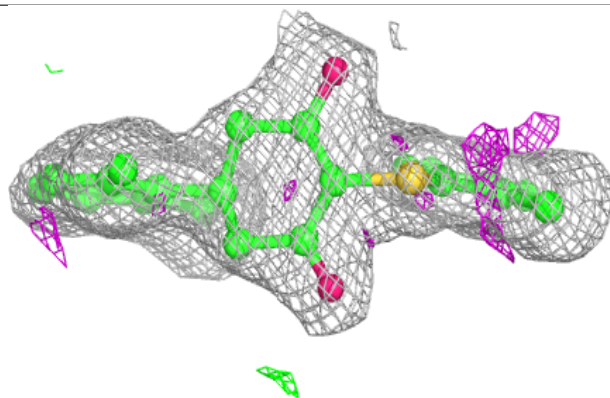
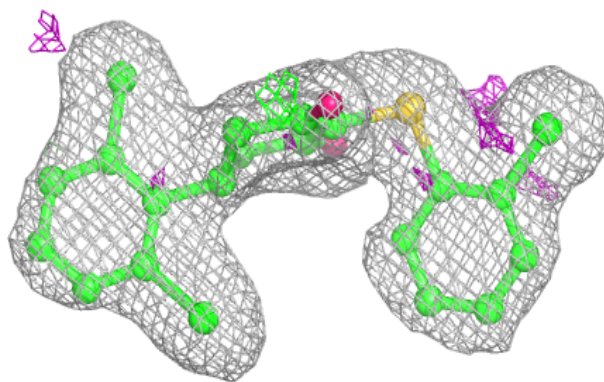
**Electron density around 36U D 803:**

$2mF_o-DF_c$ (at 0.7 rmsd) in gray
 mF_o-DF_c (at 3 rmsd) in purple (negative)
and green (positive)

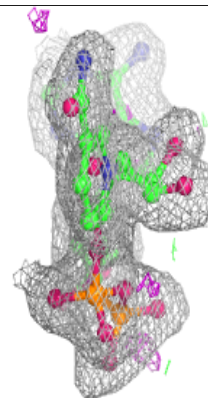
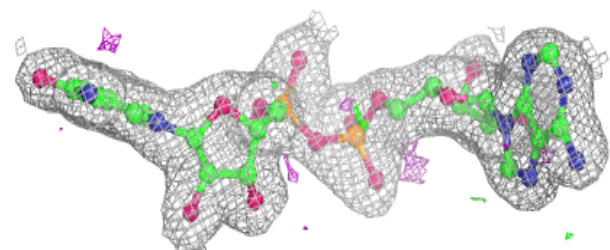
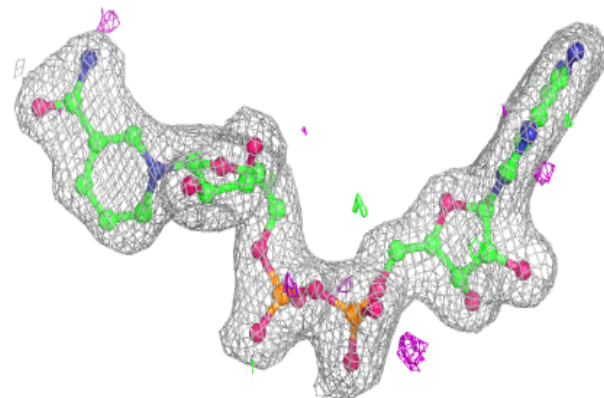


Electron density around 36U C 804:

$2mF_o-DF_c$ (at 0.7 rmsd) in gray
 mF_o-DF_c (at 3 rmsd) in purple (negative)
and green (positive)

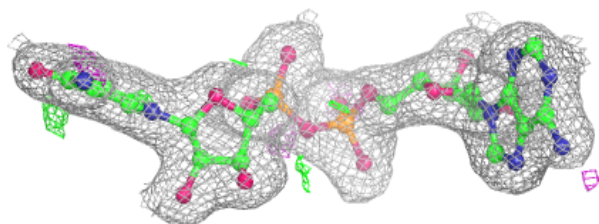
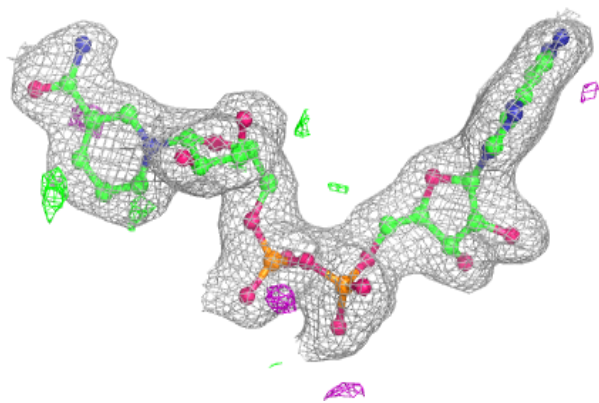
**Electron density around NAI D 801:**

$2mF_o-DF_c$ (at 0.7 rmsd) in gray
 mF_o-DF_c (at 3 rmsd) in purple (negative)
and green (positive)

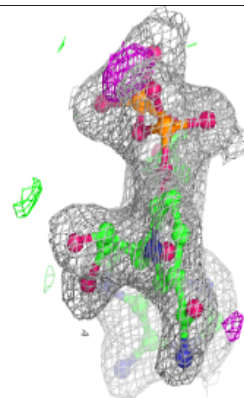
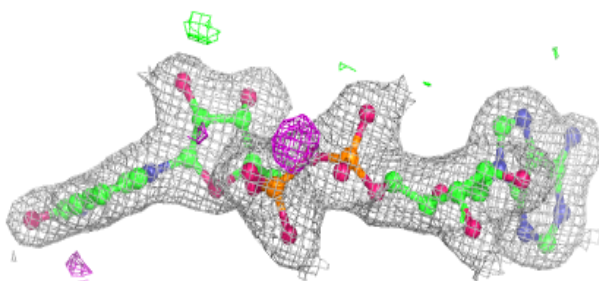
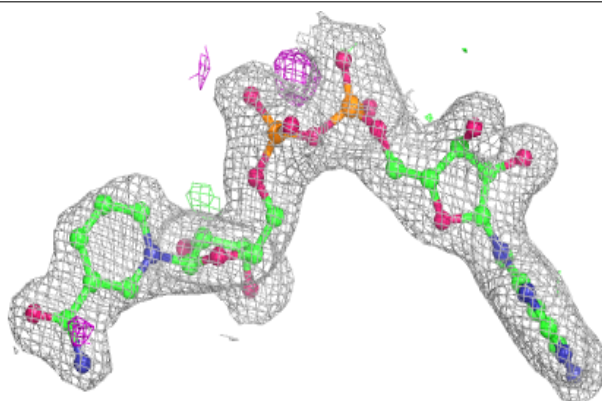


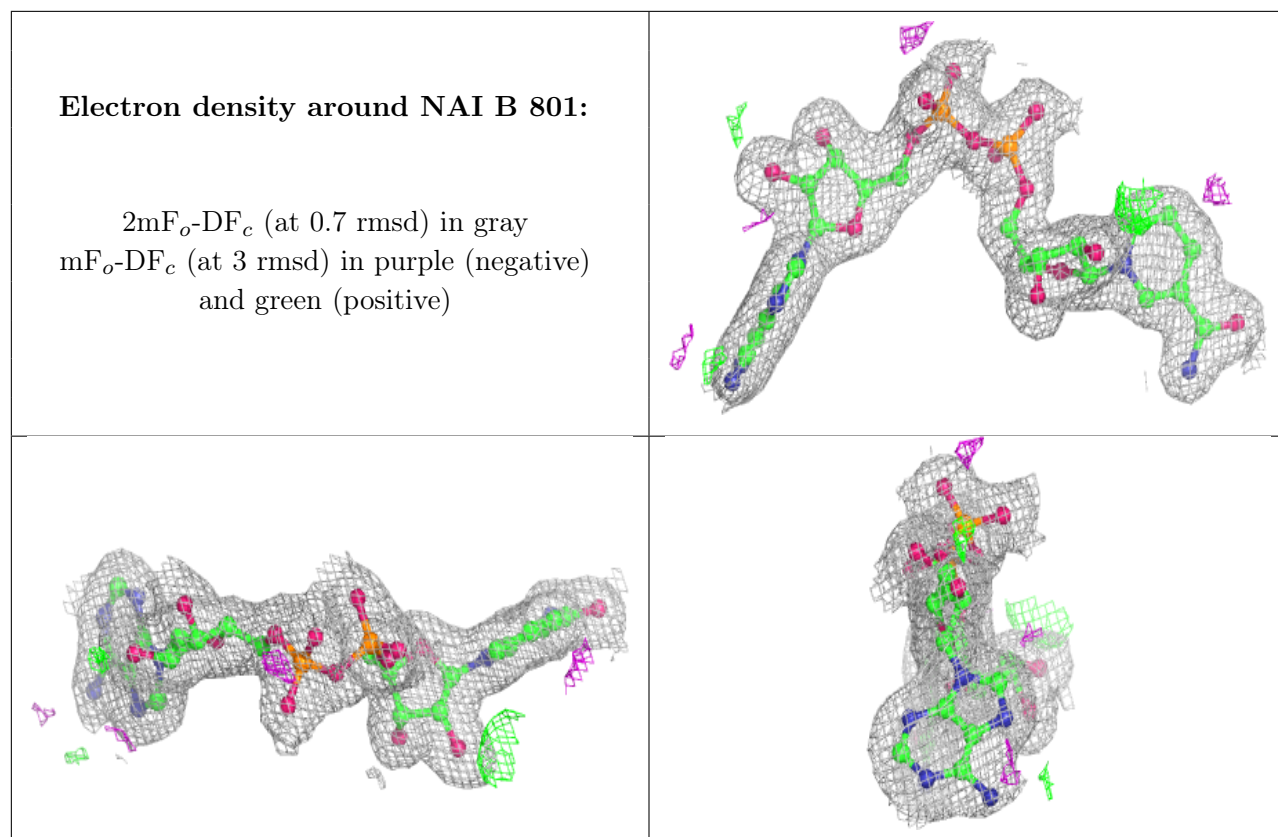
Electron density around NAI A 801:

$2mF_o-DF_c$ (at 0.7 rmsd) in gray
 mF_o-DF_c (at 3 rmsd) in purple (negative)
and green (positive)

**Electron density around NAI C 801:**

$2mF_o-DF_c$ (at 0.7 rmsd) in gray
 mF_o-DF_c (at 3 rmsd) in purple (negative)
and green (positive)





6.5 Other polymers [i](#)

There are no such residues in this entry.