



# Full wwPDB X-ray Structure Validation Report ⓘ

Oct 23, 2021 – 04:05 PM EDT

PDB ID : 1QP7  
Title : PURINE REPRESSOR MUTANT-HYPOXANTHINE-PALINDROMIC OPERATOR COMPLEX  
Authors : Glasfeld, A.; Koehler, A.N.; Schumacher, M.A.; Brennan, R.G.  
Deposited on : 1999-06-01  
Resolution : 2.90 Å (reported)

This is a Full wwPDB X-ray Structure Validation Report for a publicly released PDB entry.

We welcome your comments at [validation@mail.wwpdb.org](mailto:validation@mail.wwpdb.org)

A user guide is available at

<https://www.wwpdb.org/validation/2017/XrayValidationReportHelp>

with specific help available everywhere you see the ⓘ symbol.

---

The following versions of software and data (see [references ⓘ](#)) were used in the production of this report:

MolProbity : 4.02b-467  
Mogul : 1.8.5 (274361), CSD as541be (2020)  
Xtrriage (Phenix) : **NOT EXECUTED**  
EDS : **NOT EXECUTED**  
Percentile statistics : 20191225.v01 (using entries in the PDB archive December 25th 2019)  
Ideal geometry (proteins) : Engh & Huber (2001)  
Ideal geometry (DNA, RNA) : Parkinson et al. (1996)  
Validation Pipeline (wwPDB-VP) : 2.23.2

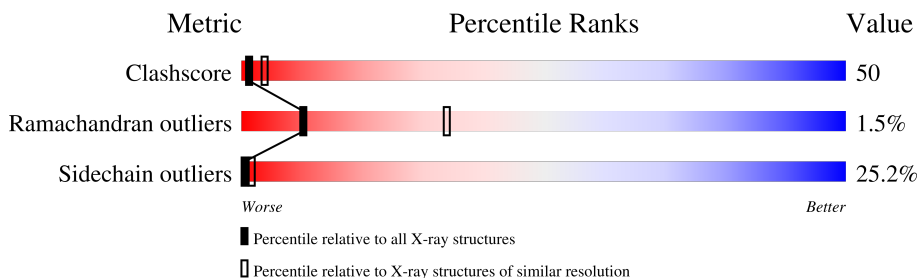
# 1 Overall quality at a glance

The following experimental techniques were used to determine the structure:

*X-RAY DIFFRACTION*

The reported resolution of this entry is 2.90 Å.

Percentile scores (ranging between 0-100) for global validation metrics of the entry are shown in the following graphic. The table shows the number of entries on which the scores are based.



Metric	Whole archive (#Entries)	Similar resolution (#Entries, resolution range(Å))
Clashscore	141614	2172 (2.90-2.90)
Ramachandran outliers	138981	2115 (2.90-2.90)
Sidechain outliers	138945	2117 (2.90-2.90)

The table below summarises the geometric issues observed across the polymeric chains and their fit to the electron density. The red, orange, yellow and green segments of the lower bar indicate the fraction of residues that contain outliers for  $\geq 3$ , 2, 1 and 0 types of geometric quality criteria respectively. A grey segment represents the fraction of residues that are not modelled. The numeric value for each fraction is indicated below the corresponding segment, with a dot representing fractions  $\leq 5\%$

Note EDS was not executed.

Mol	Chain	Length	Quality of chain
1	M	17	 53% 35% 12%
2	A	340	 34% 47% 16% ..

## 2 Entry composition [i](#)

There are 4 unique types of molecules in this entry. The entry contains 3005 atoms, of which 0 are hydrogens and 0 are deuteriums.

In the tables below, the ZeroOcc column contains the number of atoms modelled with zero occupancy, the AltConf column contains the number of residues with at least one atom in alternate conformation and the Trace column contains the number of residues modelled with at most 2 atoms.

- Molecule 1 is a DNA chain called DNA (5'-D(\*TP\*AP\*CP\*GP\*CP\*AP\*AP\*CP\*CP\*GP\*GP\*TP\*TP\*GP\*CP\*GP\*T)-3').

Mol	Chain	Residues	Atoms					ZeroOcc	AltConf	Trace
			Total	C	N	O	P			
1	M	17	345	165	63	101	16	0	0	0

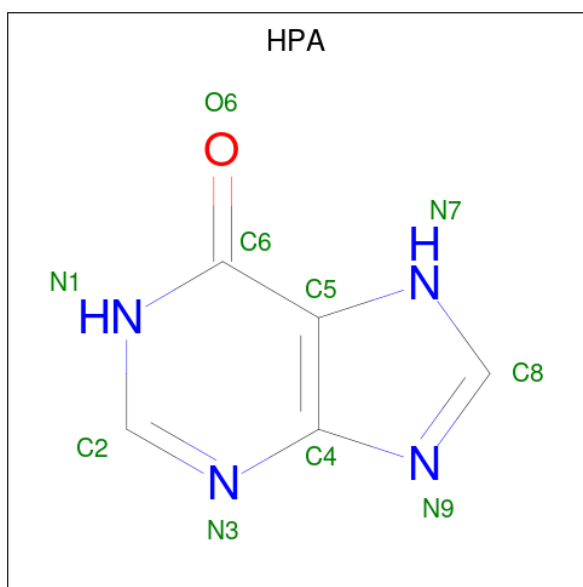
- Molecule 2 is a protein called PROTEIN (PURINE NUCLEOTIDE SYNTHESIS REPRESSOR).

Mol	Chain	Residues	Atoms					ZeroOcc	AltConf	Trace
			Total	C	N	O	S			
2	A	338	2648	1668	468	493	19	0	0	0

There is a discrepancy between the modelled and reference sequences:

Chain	Residue	Modelled	Actual	Comment	Reference
A	55	ALA	LYS	engineered mutation	UNP P0ACP7

- Molecule 3 is HYPOXANTHINE (three-letter code: HPA) (formula: C<sub>5</sub>H<sub>4</sub>N<sub>4</sub>O).



Mol	Chain	Residues	Atoms				ZeroOcc	AltConf
			Total	C	N	O		
3	A	1	10	5	4	1	0	0

- Molecule 4 is water.

Mol	Chain	Residues	Atoms		ZeroOcc	AltConf
			Total	O		
4	M	2	2	2	0	0

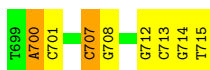
### 3 Residue-property plots

These plots are drawn for all protein, RNA, DNA and oligosaccharide chains in the entry. The first graphic for a chain summarises the proportions of the various outlier classes displayed in the second graphic. The second graphic shows the sequence view annotated by issues in geometry. Residues are color-coded according to the number of geometric quality criteria for which they contain at least one outlier: green = 0, yellow = 1, orange = 2 and red = 3 or more. Stretches of 2 or more consecutive residues without any outlier are shown as a green connector. Residues present in the sample, but not in the model, are shown in grey.

Note EDS was not executed.

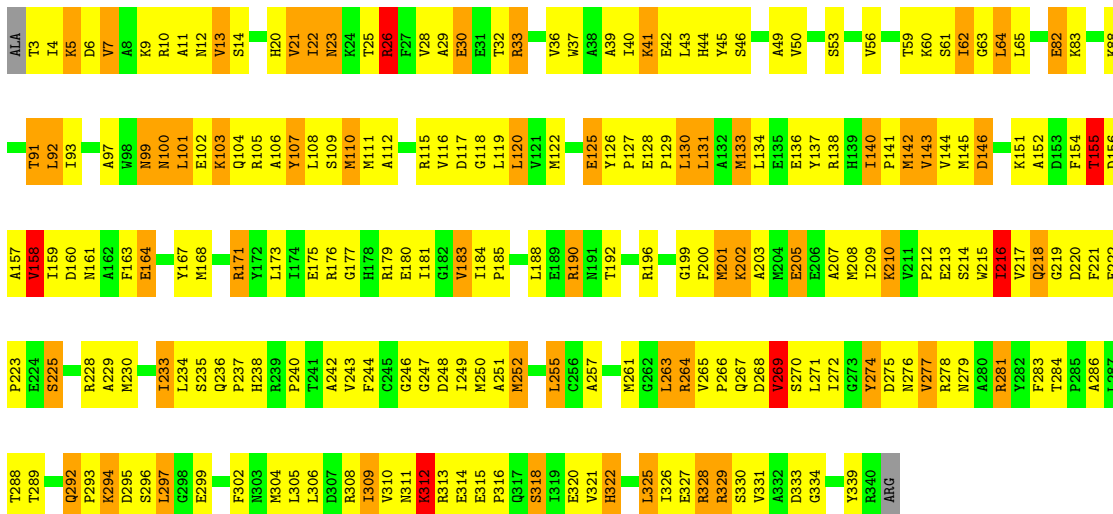
- Molecule 1: DNA (5'-D(\*TP\*AP\*CP\*GP\*CP\*AP\*AP\*CP\*CP\*GP\*GP\*TP\*TP\*GP\*CP\*GP\*T)-3')

Chain M: 



- Molecule 2: PROTEIN (PURINE NUCLEOTIDE SYNTHESIS REPRESSOR)

Chain A: 



## 4 Data and refinement statistics

Xtrriage (Phenix) and EDS were not executed - this section is therefore incomplete.

Property	Value	Source
Space group	C 2 2 21	Depositor
Cell constants a, b, c, $\alpha$ , $\beta$ , $\gamma$	176.67Å 95.49Å 80.30Å 90.00° 90.00° 90.00°	Depositor
Resolution (Å)	10.00 – 2.90	Depositor
% Data completeness (in resolution range)	(Not available) (10.00-2.90)	Depositor
$R_{merge}$	(Not available)	Depositor
$R_{sym}$	7.65	Depositor
Refinement program	TNT	Depositor
R, $R_{free}$	0.168 , (Not available)	Depositor
Estimated twinning fraction	No twinning to report.	Xtrriage
Total number of atoms	3005	wwPDB-VP
Average B, all atoms (Å <sup>2</sup> )	45.0	wwPDB-VP

## 5 Model quality [i](#)

### 5.1 Standard geometry [i](#)

Bond lengths and bond angles in the following residue types are not validated in this section: HPA

The Z score for a bond length (or angle) is the number of standard deviations the observed value is removed from the expected value. A bond length (or angle) with  $|Z| > 5$  is considered an outlier worth inspection. RMSZ is the root-mean-square of all Z scores of the bond lengths (or angles).

Mol	Chain	Bond lengths		Bond angles	
		RMSZ	# Z  >5	RMSZ	# Z  >5
1	M	0.68	0/386	1.06	2/594 (0.3%)
2	A	1.05	1/2702 (0.0%)	1.23	12/3656 (0.3%)
All	All	1.01	1/3088 (0.0%)	1.20	14/4250 (0.3%)

Chiral center outliers are detected by calculating the chiral volume of a chiral center and verifying if the center is modelled as a planar moiety or with the opposite hand. A planarity outlier is detected by checking planarity of atoms in a peptide group, atoms in a mainchain group or atoms of a sidechain that are expected to be planar.

Mol	Chain	#Chirality outliers	#Planarity outliers
2	A	1	0

All (1) bond length outliers are listed below:

Mol	Chain	Res	Type	Atoms	Z	Observed(Å)	Ideal(Å)
2	A	125	GLU	CB-CG	6.74	1.65	1.52

All (14) bond angle outliers are listed below:

Mol	Chain	Res	Type	Atoms	Z	Observed(°)	Ideal(°)
1	M	707	DC	O4'-C4'-C3'	-7.32	101.57	104.50
2	A	155	THR	CB-CA-C	-6.96	92.81	111.60
2	A	26	ARG	NE-CZ-NH1	-6.16	117.22	120.30
2	A	131	LEU	CB-CG-CD2	-6.01	100.78	111.00
2	A	158	VAL	N-CA-C	-5.85	95.20	111.00
2	A	269	VAL	CB-CA-C	-5.72	100.53	111.40
2	A	322	HIS	N-CA-C	5.63	126.21	111.00
2	A	216	ILE	CB-CA-C	5.49	122.59	111.60
2	A	190	ARG	NE-CZ-NH1	-5.34	117.63	120.30
2	A	146	ASP	N-CA-C	5.32	125.37	111.00

*Continued on next page...*

Continued from previous page...

Mol	Chain	Res	Type	Atoms	Z	Observed(°)	Ideal(°)
2	A	9	LYS	CB-CA-C	5.32	121.04	110.40
2	A	13	VAL	CB-CA-C	-5.15	101.61	111.40
1	M	700	DA	OP2-P-O3'	5.08	116.37	105.20
2	A	297	LEU	CA-CB-CG	-5.04	103.72	115.30

All (1) chirality outliers are listed below:

Mol	Chain	Res	Type	Atom
2	A	9	LYS	CA

There are no planarity outliers.

## 5.2 Too-close contacts [i](#)

In the following table, the Non-H and H(model) columns list the number of non-hydrogen atoms and hydrogen atoms in the chain respectively. The H(added) column lists the number of hydrogen atoms added and optimized by MolProbity. The Clashes column lists the number of clashes within the asymmetric unit, whereas Symm-Clashes lists symmetry-related clashes.

Mol	Chain	Non-H	H(model)	H(added)	Clashes	Symm-Clashes
1	M	345	0	193	9	0
2	A	2648	0	2628	282	0
3	A	10	0	4	0	0
4	M	2	0	0	0	0
All	All	3005	0	2825	291	0

The all-atom clashscore is defined as the number of clashes found per 1000 atoms (including hydrogen atoms). The all-atom clashscore for this structure is 50.

All (291) close contacts within the same asymmetric unit are listed below, sorted by their clash magnitude.

Atom-1	Atom-2	Interatomic distance (Å)	Clash overlap (Å)
2:A:100:ASN:ND2	2:A:103:LYS:H	1.38	1.22
1:M:713:DC:H2''	1:M:714:DG:H5''	1.21	1.15
2:A:236:GLN:HB2	2:A:237:PRO:HD2	1.20	1.10
2:A:61:SER:HB2	2:A:91:THR:HG22	1.40	0.98
1:M:713:DC:C2'	1:M:714:DG:H5''	1.99	0.91
2:A:156:ASP:HB3	2:A:304:MET:HE1	1.53	0.90
2:A:140:ILE:HD12	2:A:141:PRO:CD	2.00	0.90
2:A:100:ASN:HD22	2:A:103:LYS:H	1.16	0.89

Continued on next page...



*Continued from previous page...*

Atom-1	Atom-2	Interatomic distance (Å)	Clash overlap (Å)
1:M:713:DC:H2''	1:M:714:DG:C5'	2.03	0.89
2:A:159:ILE:HD11	2:A:320:GLU:HG2	1.55	0.87
2:A:236:GLN:HB2	2:A:237:PRO:CD	2.05	0.87
2:A:200:PHE:HD2	2:A:201:MET:HE2	1.38	0.87
2:A:118:GLY:HA2	2:A:140:ILE:HD11	1.57	0.85
2:A:159:ILE:HD11	2:A:320:GLU:CG	2.05	0.85
2:A:140:ILE:HD12	2:A:141:PRO:HD2	1.59	0.85
2:A:20:HIS:ND1	2:A:25:THR:HG23	1.91	0.85
2:A:325:LEU:HD13	2:A:326:ILE:N	1.93	0.84
2:A:30:GLU:HG2	2:A:33:ARG:HH12	1.41	0.84
2:A:100:ASN:ND2	2:A:103:LYS:N	2.24	0.83
2:A:255:LEU:HD13	2:A:271:LEU:HD23	1.59	0.83
2:A:292:GLN:HG3	2:A:293:PRO:HD2	1.61	0.83
2:A:105:ARG:HA	2:A:133:MET:HE3	1.61	0.82
2:A:152:ALA:HB1	2:A:154:PHE:CE1	2.16	0.81
2:A:100:ASN:HD21	2:A:103:LYS:H	1.28	0.81
2:A:223:PRO:HG3	2:A:249:ILE:CG2	2.11	0.80
2:A:3:THR:HA	2:A:6:ASP:OD2	1.82	0.80
2:A:257:ALA:O	2:A:261:MET:HG2	1.82	0.80
2:A:20:HIS:HA	2:A:25:THR:HG22	1.63	0.79
2:A:167:TYR:CD1	2:A:202:LYS:HG2	2.18	0.79
2:A:156:ASP:HB3	2:A:304:MET:CE	2.12	0.79
2:A:30:GLU:CG	2:A:33:ARG:HH12	1.96	0.78
2:A:288:THR:HG23	2:A:327:GLU:HA	1.67	0.77
2:A:237:PRO:HG2	2:A:238:HIS:H	1.49	0.77
2:A:255:LEU:CD1	2:A:271:LEU:HD23	2.14	0.77
2:A:200:PHE:HD2	2:A:201:MET:CE	1.99	0.76
2:A:183:VAL:HG13	2:A:216:ILE:HB	1.68	0.74
2:A:210:LYS:H	2:A:210:LYS:HD3	1.53	0.74
2:A:63:GLY:O	2:A:119:LEU:HD12	1.88	0.74
2:A:216:ILE:HD13	2:A:216:ILE:O	1.88	0.73
2:A:248:ASP:O	2:A:251:ALA:HB3	1.88	0.73
2:A:297:LEU:HD23	2:A:297:LEU:O	1.88	0.73
2:A:167:TYR:HD1	2:A:202:LYS:HG2	1.52	0.72
2:A:200:PHE:CD2	2:A:201:MET:HE2	2.23	0.72
2:A:43:LEU:N	2:A:43:LEU:HD23	2.03	0.72
2:A:101:LEU:HA	2:A:104:GLN:NE2	2.04	0.72
2:A:37:TRP:HA	2:A:37:TRP:CE3	2.26	0.71
2:A:82:GLU:HG3	2:A:83:LYS:N	2.05	0.71
2:A:118:GLY:HA2	2:A:140:ILE:CD1	2.22	0.70
2:A:281:ARG:HH11	2:A:281:ARG:HG2	1.55	0.70

*Continued on next page...*

*Continued from previous page...*

Atom-1	Atom-2	Interatomic distance (Å)	Clash overlap (Å)
2:A:270:SER:HB3	2:A:331:VAL:HA	1.73	0.69
2:A:202:LYS:HG3	2:A:203:ALA:N	2.07	0.69
2:A:61:SER:CB	2:A:91:THR:HG22	2.19	0.69
2:A:184:ILE:HA	2:A:217:VAL:O	1.93	0.69
2:A:244:PHE:HD1	2:A:272:ILE:HG23	1.58	0.69
2:A:292:GLN:HG3	2:A:293:PRO:CD	2.23	0.69
2:A:101:LEU:O	2:A:104:GLN:HG2	1.93	0.68
2:A:164:GLU:O	2:A:168:MET:HG3	1.93	0.68
2:A:118:GLY:CA	2:A:140:ILE:HD11	2.23	0.68
2:A:142:MET:HG2	2:A:155:THR:HG23	1.76	0.68
2:A:171:ARG:O	2:A:175:GLU:HG3	1.94	0.68
2:A:100:ASN:HD22	2:A:103:LYS:N	1.90	0.68
2:A:3:THR:HG23	2:A:45:TYR:HE1	1.59	0.67
2:A:101:LEU:HA	2:A:104:GLN:HG2	1.76	0.67
2:A:281:ARG:HG2	2:A:281:ARG:NH1	2.10	0.67
2:A:100:ASN:ND2	2:A:103:LYS:HB2	2.10	0.67
2:A:159:ILE:CD1	2:A:320:GLU:HG2	2.24	0.67
1:M:712:DG:H2''	1:M:713:DC:H5''	1.76	0.67
2:A:160:ASP:HA	2:A:321:VAL:HG12	1.76	0.67
2:A:185:PRO:HD2	2:A:217:VAL:O	1.95	0.67
2:A:233:ILE:HG22	2:A:234:LEU:N	2.09	0.67
2:A:247:GLY:HA2	2:A:274:TYR:O	1.96	0.66
2:A:30:GLU:HA	2:A:33:ARG:NH1	2.11	0.66
2:A:10:ARG:HG3	2:A:10:ARG:HH11	1.59	0.66
2:A:36:VAL:O	2:A:40:ILE:HG13	1.95	0.65
2:A:13:VAL:HG23	2:A:14:SER:O	1.97	0.65
2:A:22:ILE:HG22	2:A:23:ASN:N	2.09	0.65
2:A:130:LEU:HD22	2:A:130:LEU:O	1.98	0.64
2:A:138:ARG:NH2	2:A:154:PHE:HB3	2.12	0.63
2:A:313:ARG:HD2	2:A:315:GLU:O	1.97	0.63
2:A:101:LEU:HA	2:A:104:GLN:HE21	1.61	0.63
2:A:309:ILE:HG22	2:A:310:VAL:N	2.14	0.62
2:A:61:SER:HB2	2:A:91:THR:CG2	2.21	0.62
2:A:264:ARG:HB2	2:A:268:ASP:OD2	1.99	0.62
2:A:40:ILE:HG22	2:A:41:LYS:HD3	1.80	0.62
2:A:60:LYS:N	2:A:117:ASP:OD2	2.31	0.62
2:A:281:ARG:NH1	2:A:281:ARG:O	2.30	0.62
2:A:192:THR:O	2:A:196:ARG:HD2	2.00	0.62
2:A:265:VAL:HG13	2:A:266:PRO:HA	1.82	0.61
2:A:100:ASN:HD22	2:A:103:LYS:HB2	1.63	0.61
2:A:127:PRO:HB2	2:A:129:PRO:HD2	1.81	0.61

*Continued on next page...*

*Continued from previous page...*

Atom-1	Atom-2	Interatomic distance (Å)	Clash overlap (Å)
2:A:140:ILE:HD12	2:A:141:PRO:N	2.14	0.61
2:A:62:ILE:CD1	2:A:120:LEU:HD22	2.29	0.61
2:A:161:ASN:HB3	2:A:164:GLU:HG2	1.82	0.61
2:A:252:MET:HB3	2:A:283:PHE:CE2	2.36	0.61
2:A:137:TYR:O	2:A:140:ILE:HG23	2.02	0.60
2:A:237:PRO:CG	2:A:238:HIS:H	2.14	0.60
2:A:293:PRO:O	2:A:297:LEU:HB2	2.02	0.60
2:A:21:VAL:HG22	2:A:22:ILE:N	2.14	0.60
2:A:62:ILE:HD12	2:A:63:GLY:N	2.15	0.60
2:A:105:ARG:HA	2:A:133:MET:CE	2.30	0.60
2:A:119:LEU:HB3	2:A:142:MET:HB2	1.84	0.60
2:A:3:THR:HG23	2:A:45:TYR:CE1	2.38	0.58
2:A:233:ILE:HG22	2:A:234:LEU:HD23	1.84	0.58
2:A:159:ILE:CG1	2:A:320:GLU:HG2	2.33	0.58
2:A:159:ILE:HD12	2:A:159:ILE:C	2.24	0.58
2:A:329:ARG:HG3	2:A:329:ARG:HH11	1.69	0.58
2:A:20:HIS:CE1	2:A:26:ARG:HD3	2.38	0.58
2:A:305:LEU:C	2:A:309:ILE:HD12	2.25	0.56
2:A:264:ARG:HB3	2:A:267:GLN:HB2	1.86	0.56
2:A:10:ARG:NH2	2:A:42:GLU:OE1	2.37	0.56
2:A:143:VAL:HB	2:A:156:ASP:HB2	1.87	0.56
2:A:184:ILE:HD13	2:A:229:ALA:HB3	1.88	0.56
2:A:164:GLU:OE2	2:A:322:HIS:ND1	2.39	0.56
2:A:216:ILE:HD13	2:A:216:ILE:C	2.27	0.56
2:A:188:LEU:N	2:A:188:LEU:HD23	2.21	0.55
2:A:233:ILE:HG22	2:A:234:LEU:CD2	2.37	0.55
2:A:306:LEU:HD12	2:A:309:ILE:HD13	1.87	0.55
2:A:106:ALA:O	2:A:110:MET:HG2	2.07	0.55
2:A:20:HIS:ND1	2:A:25:THR:CG2	2.69	0.55
2:A:105:ARG:HG3	2:A:106:ALA:N	2.21	0.55
2:A:101:LEU:HA	2:A:104:GLN:CG	2.36	0.55
2:A:30:GLU:HG2	2:A:33:ARG:NH1	2.15	0.55
2:A:131:LEU:N	2:A:131:LEU:HD22	2.22	0.55
2:A:159:ILE:HG13	2:A:320:GLU:HA	1.90	0.54
2:A:293:PRO:HG2	2:A:321:VAL:HG22	1.90	0.54
2:A:305:LEU:HG	2:A:309:ILE:HD11	1.90	0.54
2:A:214:SER:HB2	2:A:236:GLN:OE1	2.07	0.54
2:A:274:TYR:N	2:A:289:THR:OG1	2.41	0.53
2:A:305:LEU:O	2:A:309:ILE:HD12	2.08	0.53
2:A:223:PRO:HG3	2:A:249:ILE:HG22	1.90	0.53
2:A:112:ALA:O	2:A:115:ARG:HD3	2.08	0.53

*Continued on next page...*

*Continued from previous page...*

Atom-1	Atom-2	Interatomic distance (Å)	Clash overlap (Å)
2:A:284:THR:O	2:A:284:THR:HG22	2.09	0.53
1:M:714:DG:H2''	1:M:715:DT:H5'	1.91	0.53
2:A:62:ILE:HD13	2:A:120:LEU:HD22	1.89	0.53
2:A:220:ASP:O	2:A:221:PHE:HB2	2.08	0.52
2:A:255:LEU:HD13	2:A:271:LEU:CD2	2.35	0.52
2:A:293:PRO:HG2	2:A:321:VAL:CG2	2.39	0.52
2:A:184:ILE:HG23	2:A:217:VAL:O	2.09	0.52
2:A:233:ILE:O	2:A:236:GLN:HG2	2.10	0.52
2:A:244:PHE:CD1	2:A:272:ILE:HG23	2.42	0.52
2:A:120:LEU:HD13	2:A:305:LEU:HD22	1.90	0.52
2:A:200:PHE:CD2	2:A:201:MET:CE	2.87	0.52
2:A:22:ILE:HG22	2:A:23:ASN:CG	2.31	0.51
2:A:101:LEU:O	2:A:101:LEU:HD12	2.10	0.51
2:A:325:LEU:HD13	2:A:326:ILE:C	2.31	0.51
2:A:152:ALA:HB1	2:A:154:PHE:CD1	2.45	0.51
2:A:218:GLN:CA	2:A:218:GLN:HE21	2.24	0.51
2:A:160:ASP:HA	2:A:321:VAL:CG1	2.40	0.51
2:A:263:LEU:HD13	2:A:263:LEU:N	2.25	0.51
2:A:306:LEU:O	2:A:309:ILE:HB	2.10	0.51
2:A:219:GLY:HA3	2:A:250:MET:SD	2.50	0.51
2:A:40:ILE:HG22	2:A:41:LYS:CD	2.40	0.51
2:A:49:ALA:O	2:A:53:SER:OG	2.27	0.51
2:A:210:LYS:H	2:A:210:LYS:CD	2.23	0.51
2:A:281:ARG:HG2	2:A:281:ARG:O	2.10	0.51
2:A:184:ILE:HD13	2:A:229:ALA:CB	2.40	0.50
2:A:210:LYS:HD3	2:A:210:LYS:N	2.24	0.50
2:A:62:ILE:HD11	2:A:120:LEU:HD22	1.92	0.50
2:A:142:MET:O	2:A:155:THR:HG22	2.12	0.50
2:A:92:LEU:HD22	2:A:93:ILE:N	2.26	0.50
2:A:128:GLU:N	2:A:129:PRO:CD	2.75	0.50
2:A:237:PRO:HG2	2:A:238:HIS:N	2.24	0.50
2:A:274:TYR:CD1	2:A:274:TYR:C	2.84	0.50
2:A:133:MET:O	2:A:136:GLU:HB2	2.12	0.50
2:A:167:TYR:CD1	2:A:202:LYS:CG	2.93	0.50
2:A:177:GLY:C	2:A:334:GLY:HA3	2.32	0.50
2:A:10:ARG:HH11	2:A:10:ARG:CG	2.25	0.49
2:A:144:VAL:HG12	2:A:146:ASP:H	1.77	0.49
1:M:714:DG:H2''	1:M:715:DT:C5'	2.41	0.49
2:A:20:HIS:HA	2:A:25:THR:CG2	2.37	0.49
2:A:101:LEU:CA	2:A:104:GLN:HG2	2.41	0.49
2:A:218:GLN:HE21	2:A:218:GLN:HA	1.77	0.49

*Continued on next page...*

*Continued from previous page...*

Atom-1	Atom-2	Interatomic distance (Å)	Clash overlap (Å)
2:A:37:TRP:CE3	2:A:40:ILE:HD12	2.48	0.49
2:A:152:ALA:CB	2:A:154:PHE:CE1	2.93	0.49
2:A:62:ILE:HD11	2:A:120:LEU:CD2	2.43	0.49
2:A:222:GLU:O	2:A:225:SER:OG	2.31	0.49
2:A:107:TYR:HA	2:A:110:MET:HG3	1.94	0.48
2:A:308:ARG:O	2:A:312:LYS:HA	2.12	0.48
2:A:23:ASN:N	2:A:23:ASN:ND2	2.61	0.48
2:A:154:PHE:CD1	2:A:154:PHE:N	2.81	0.48
2:A:32:THR:O	2:A:36:VAL:HG23	2.13	0.48
2:A:306:LEU:O	2:A:310:VAL:N	2.46	0.48
2:A:265:VAL:HG22	2:A:269:VAL:HG23	1.96	0.48
2:A:310:VAL:CG2	2:A:311:ASN:N	2.75	0.48
2:A:101:LEU:HD12	2:A:101:LEU:C	2.34	0.48
2:A:201:MET:HE2	2:A:201:MET:CA	2.43	0.48
2:A:23:ASN:ND2	2:A:23:ASN:H	2.12	0.47
2:A:163:PHE:O	2:A:199:GLY:HA3	2.14	0.47
2:A:276:ASN:HA	2:A:289:THR:HG21	1.95	0.47
2:A:315:GLU:HB3	2:A:316:PRO:HD2	1.96	0.47
2:A:101:LEU:C	2:A:104:GLN:HG2	2.34	0.47
2:A:201:MET:HE2	2:A:201:MET:HA	1.97	0.47
2:A:294:LYS:HE2	2:A:294:LYS:HB2	1.62	0.47
2:A:65:LEU:HD12	2:A:65:LEU:C	2.35	0.47
2:A:97:ALA:HB1	2:A:104:GLN:HB3	1.96	0.47
2:A:265:VAL:CG1	2:A:266:PRO:HA	2.45	0.46
2:A:297:LEU:HD23	2:A:297:LEU:C	2.36	0.46
2:A:313:ARG:HG3	2:A:314:GLU:N	2.30	0.46
2:A:210:LYS:O	2:A:210:LYS:HG2	2.14	0.46
2:A:286:ALA:HB1	2:A:328:ARG:HG2	1.97	0.46
2:A:143:VAL:HA	2:A:155:THR:HG22	1.97	0.46
2:A:237:PRO:CG	2:A:238:HIS:N	2.78	0.46
2:A:274:TYR:C	2:A:274:TYR:HD1	2.18	0.46
2:A:155:THR:HG22	2:A:156:ASP:N	2.30	0.46
2:A:277:VAL:HG12	2:A:279:ASN:H	1.79	0.46
2:A:212:PRO:O	2:A:215:TRP:HB2	2.14	0.46
2:A:306:LEU:HD12	2:A:306:LEU:HA	1.49	0.46
2:A:313:ARG:CG	2:A:314:GLU:N	2.79	0.46
2:A:218:GLN:HE21	2:A:219:GLY:H	1.64	0.46
1:M:700:DA:H2''	1:M:701:DC:O5'	2.15	0.46
2:A:179:ARG:NH2	2:A:207:ALA:O	2.49	0.46
2:A:99:ASN:HD22	2:A:99:ASN:HA	1.62	0.45
2:A:202:LYS:HE3	2:A:202:LYS:HB2	1.58	0.45

*Continued on next page...*

*Continued from previous page...*

Atom-1	Atom-2	Interatomic distance (Å)	Clash overlap (Å)
2:A:62:ILE:HD12	2:A:62:ILE:C	2.36	0.45
2:A:202:LYS:CG	2:A:203:ALA:N	2.79	0.45
2:A:208:MET:HE3	2:A:208:MET:HB3	1.83	0.45
2:A:167:TYR:CE1	2:A:202:LYS:CG	3.00	0.45
2:A:105:ARG:CA	2:A:133:MET:CE	2.94	0.45
2:A:118:GLY:HA2	2:A:141:PRO:HG2	1.98	0.45
2:A:10:ARG:CG	2:A:10:ARG:NH1	2.79	0.45
2:A:159:ILE:HD12	2:A:159:ILE:O	2.17	0.45
2:A:145:MET:HA	2:A:158:VAL:HG13	1.98	0.45
2:A:266:PRO:HB3	2:A:330:SER:O	2.17	0.45
2:A:243:VAL:O	2:A:271:LEU:HD12	2.18	0.44
2:A:59:THR:HG21	2:A:115:ARG:O	2.17	0.44
2:A:140:ILE:HD12	2:A:141:PRO:CG	2.46	0.44
2:A:325:LEU:HD11	2:A:327:GLU:HG3	1.99	0.44
2:A:23:ASN:H	2:A:23:ASN:HD22	1.66	0.44
2:A:244:PHE:HA	2:A:272:ILE:HG22	1.98	0.44
2:A:28:VAL:HG12	2:A:29:ALA:O	2.18	0.44
2:A:159:ILE:HD11	2:A:320:GLU:CD	2.37	0.44
2:A:234:LEU:HD13	2:A:263:LEU:HD23	2.00	0.43
2:A:294:LYS:O	2:A:297:LEU:HB3	2.19	0.43
2:A:7:VAL:HG12	2:A:39:ALA:CB	2.48	0.43
1:M:707:DC:H2''	1:M:708:DG:H5'	2.01	0.43
1:M:713:DC:C3'	1:M:714:DG:H5''	2.46	0.43
2:A:310:VAL:HG22	2:A:311:ASN:N	2.33	0.43
2:A:218:GLN:HE21	2:A:219:GLY:N	2.16	0.43
2:A:176:ARG:NH1	2:A:333:ASP:OD1	2.43	0.43
2:A:128:GLU:N	2:A:129:PRO:HD2	2.34	0.43
2:A:157:ALA:O	2:A:318:SER:HA	2.18	0.43
2:A:223:PRO:HG3	2:A:249:ILE:HG21	1.98	0.43
2:A:230:MET:O	2:A:234:LEU:HG	2.18	0.43
2:A:234:LEU:HG	2:A:234:LEU:H	1.68	0.43
2:A:201:MET:CE	2:A:201:MET:CA	2.97	0.43
2:A:265:VAL:HA	2:A:266:PRO:HA	1.73	0.43
2:A:53:SER:HA	2:A:56:VAL:HG22	2.01	0.43
2:A:236:GLN:CB	2:A:237:PRO:HD2	2.12	0.43
2:A:205:GLU:H	2:A:205:GLU:HG2	1.74	0.42
2:A:329:ARG:HH11	2:A:329:ARG:CG	2.31	0.42
2:A:131:LEU:HD22	2:A:131:LEU:H	1.83	0.42
2:A:263:LEU:HD12	2:A:263:LEU:HA	1.15	0.42
2:A:180:GLU:HB3	2:A:240:PRO:HA	2.00	0.42
2:A:325:LEU:CD1	2:A:327:GLU:HG3	2.49	0.42

*Continued on next page...*

Continued from previous page...

Atom-1	Atom-2	Interatomic distance (Å)	Clash overlap (Å)
2:A:140:ILE:CD1	2:A:141:PRO:HD2	2.39	0.42
2:A:156:ASP:HB3	2:A:304:MET:HE2	1.98	0.42
2:A:212:PRO:HG2	2:A:215:TRP:CD2	2.55	0.42
2:A:221:PHE:HA	2:A:250:MET:HG3	2.02	0.42
2:A:11:ALA:O	2:A:13:VAL:HG13	2.19	0.42
2:A:64:LEU:HB2	2:A:92:LEU:HD21	2.00	0.42
2:A:125:GLU:HG2	2:A:190:ARG:HD2	2.00	0.42
2:A:130:LEU:HD22	2:A:134:LEU:HG	2.00	0.42
2:A:105:ARG:N	2:A:133:MET:HE1	2.34	0.42
2:A:119:LEU:HD12	2:A:119:LEU:HA	1.76	0.41
2:A:142:MET:CG	2:A:155:THR:HG23	2.47	0.41
2:A:171:ARG:HH11	2:A:171:ARG:HD2	1.68	0.41
2:A:201:MET:HB2	2:A:201:MET:HE3	1.78	0.41
2:A:91:THR:HG22	2:A:91:THR:O	2.21	0.41
2:A:234:LEU:HB2	2:A:261:MET:CE	2.50	0.41
2:A:100:ASN:ND2	2:A:100:ASN:C	2.74	0.41
2:A:4:ILE:CG2	2:A:5:LYS:N	2.83	0.41
2:A:10:ARG:HG3	2:A:10:ARG:NH1	2.30	0.41
2:A:117:ASP:O	2:A:141:PRO:HG2	2.21	0.41
2:A:159:ILE:O	2:A:321:VAL:HG12	2.21	0.41
2:A:179:ARG:HA	2:A:209:ILE:HD13	2.02	0.41
2:A:236:GLN:HG3	2:A:238:HIS:O	2.21	0.41
2:A:288:THR:HA	2:A:328:ARG:HB2	2.02	0.41
2:A:339:TYR:CD1	2:A:339:TYR:N	2.88	0.41
2:A:173:LEU:HA	2:A:173:LEU:HD23	1.75	0.41
2:A:88:LYS:HG3	2:A:302:PHE:HE2	1.85	0.41
2:A:137:TYR:HB3	2:A:140:ILE:CG2	2.51	0.41
2:A:181:ILE:HA	2:A:242:ALA:O	2.21	0.41
2:A:126:TYR:O	2:A:131:LEU:HD21	2.20	0.41
2:A:140:ILE:HD12	2:A:140:ILE:C	2.41	0.41
2:A:116:VAL:H	2:A:116:VAL:HG22	1.53	0.40
2:A:159:ILE:HD11	2:A:320:GLU:CB	2.49	0.40
2:A:292:GLN:HA	2:A:293:PRO:HD3	1.88	0.40
2:A:306:LEU:HA	2:A:309:ILE:CD1	2.52	0.40
2:A:126:TYR:CD2	2:A:130:LEU:CD1	3.05	0.40
2:A:127:PRO:C	2:A:129:PRO:HD2	2.41	0.40
2:A:134:LEU:HA	2:A:134:LEU:HD23	1.88	0.40

There are no symmetry-related clashes.



## 5.3 Torsion angles [i](#)

### 5.3.1 Protein backbone [i](#)

In the following table, the Percentiles column shows the percent Ramachandran outliers of the chain as a percentile score with respect to all X-ray entries followed by that with respect to entries of similar resolution.

The Analysed column shows the number of residues for which the backbone conformation was analysed, and the total number of residues.

Mol	Chain	Analysed	Favoured	Allowed	Outliers	Percentiles
2	A	336/340 (99%)	298 (89%)	33 (10%)	5 (2%)	10 34

All (5) Ramachandran outliers are listed below:

Mol	Chain	Res	Type
2	A	246	GLY
2	A	275	ASP
2	A	278	ARG
2	A	312	LYS
2	A	309	ILE

### 5.3.2 Protein sidechains [i](#)

In the following table, the Percentiles column shows the percent sidechain outliers of the chain as a percentile score with respect to all X-ray entries followed by that with respect to entries of similar resolution.

The Analysed column shows the number of residues for which the sidechain conformation was analysed, and the total number of residues.

Mol	Chain	Analysed	Rotameric	Outliers	Percentiles
2	A	278/279 (100%)	208 (75%)	70 (25%)	0 2

All (70) residues with a non-rotameric sidechain are listed below:

Mol	Chain	Res	Type
2	A	5	LYS
2	A	7	VAL
2	A	12	ASN
2	A	21	VAL
2	A	22	ILE
2	A	23	ASN

*Continued on next page...*



*Continued from previous page...*

<b>Mol</b>	<b>Chain</b>	<b>Res</b>	<b>Type</b>
2	A	26	ARG
2	A	30	GLU
2	A	33	ARG
2	A	41	LYS
2	A	44	HIS
2	A	46	SER
2	A	50	VAL
2	A	62	ILE
2	A	64	LEU
2	A	82	GLU
2	A	91	THR
2	A	92	LEU
2	A	99	ASN
2	A	100	ASN
2	A	101	LEU
2	A	102	GLU
2	A	103	LYS
2	A	107	TYR
2	A	108	LEU
2	A	109	SER
2	A	110	MET
2	A	111	MET
2	A	120	LEU
2	A	122	MET
2	A	130	LEU
2	A	133	MET
2	A	140	ILE
2	A	142	MET
2	A	143	VAL
2	A	151	LYS
2	A	155	THR
2	A	158	VAL
2	A	164	GLU
2	A	171	ARG
2	A	183	VAL
2	A	201	MET
2	A	202	LYS
2	A	205	GLU
2	A	210	LYS
2	A	213	GLU
2	A	216	ILE
2	A	218	GLN

*Continued on next page...*

*Continued from previous page...*

Mol	Chain	Res	Type
2	A	225	SER
2	A	228	ARG
2	A	233	ILE
2	A	235	SER
2	A	252	MET
2	A	255	LEU
2	A	263	LEU
2	A	264	ARG
2	A	269	VAL
2	A	274	TYR
2	A	277	VAL
2	A	281	ARG
2	A	292	GLN
2	A	294	LYS
2	A	295	ASP
2	A	296	SER
2	A	299	GLU
2	A	312	LYS
2	A	318	SER
2	A	325	LEU
2	A	328	ARG
2	A	329	ARG

Sometimes sidechains can be flipped to improve hydrogen bonding and reduce clashes. All (7) such sidechains are listed below:

Mol	Chain	Res	Type
2	A	23	ASN
2	A	34	ASN
2	A	96	ASN
2	A	99	ASN
2	A	100	ASN
2	A	113	GLN
2	A	218	GLN

### 5.3.3 RNA [i](#)

There are no RNA molecules in this entry.

## 5.4 Non-standard residues in protein, DNA, RNA chains [i](#)

There are no non-standard protein/DNA/RNA residues in this entry.

## 5.5 Carbohydrates [i](#)

There are no monosaccharides in this entry.

## 5.6 Ligand geometry [i](#)

1 ligand is modelled in this entry.

In the following table, the Counts columns list the number of bonds (or angles) for which Mogul statistics could be retrieved, the number of bonds (or angles) that are observed in the model and the number of bonds (or angles) that are defined in the Chemical Component Dictionary. The Link column lists molecule types, if any, to which the group is linked. The Z score for a bond length (or angle) is the number of standard deviations the observed value is removed from the expected value. A bond length (or angle) with  $|Z| > 2$  is considered an outlier worth inspection. RMSZ is the root-mean-square of all Z scores of the bond lengths (or angles).

Mol	Type	Chain	Res	Link	Bond lengths			Bond angles		
					Counts	RMSZ	# Z  > 2	Counts	RMSZ	# Z  > 2
3	HPA	A	599	-	8,11,11	1.68	3 (37%)	5,15,15	3.00	3 (60%)

In the following table, the Chirals column lists the number of chiral outliers, the number of chiral centers analysed, the number of these observed in the model and the number defined in the Chemical Component Dictionary. Similar counts are reported in the Torsion and Rings columns. '-' means no outliers of that kind were identified.

Mol	Type	Chain	Res	Link	Chirals	Torsions	Rings
3	HPA	A	599	-	-	-	0/2/2/2

All (3) bond length outliers are listed below:

Mol	Chain	Res	Type	Atoms	Z	Observed(Å)	Ideal(Å)
3	A	599	HPA	C6-N1	3.54	1.39	1.33
3	A	599	HPA	C4-N9	2.03	1.38	1.34
3	A	599	HPA	C2-N1	2.00	1.37	1.33

All (3) bond angle outliers are listed below:

Mol	Chain	Res	Type	Atoms	Z	Observed(°)	Ideal(°)
3	A	599	HPA	C2-N1-C6	5.34	124.82	115.88

*Continued on next page...*

*Continued from previous page...*

Mol	Chain	Res	Type	Atoms	Z	Observed(°)	Ideal(°)
3	A	599	HPA	N3-C2-N1	-3.30	123.52	128.68
3	A	599	HPA	C6-C5-C4	-2.07	118.82	120.80

There are no chirality outliers.

There are no torsion outliers.

There are no ring outliers.

No monomer is involved in short contacts.

## 5.7 Other polymers [i](#)

There are no such residues in this entry.

## 5.8 Polymer linkage issues [i](#)

There are no chain breaks in this entry.

## 6 Fit of model and data

### 6.1 Protein, DNA and RNA chains

EDS was not executed - this section is therefore empty.

### 6.2 Non-standard residues in protein, DNA, RNA chains

EDS was not executed - this section is therefore empty.

### 6.3 Carbohydrates

EDS was not executed - this section is therefore empty.

### 6.4 Ligands

EDS was not executed - this section is therefore empty.

### 6.5 Other polymers

EDS was not executed - this section is therefore empty.