



Full wwPDB X-ray Structure Validation Report ⓘ

Mar 13, 2018 – 01:21 pm GMT

PDB ID : 1QYG
Title : ANTI-COCAINE ANTIBODY M82G2 COMPLEXED WITH BENZOYLEC-
GONINE
Authors : Pozharski, E.; Hewagama, A.; Shanafelt, A.; Petsko, G.; Ringe, D.
Deposited on : 2003-09-10
Resolution : 1.81 Å(reported)

This is a Full wwPDB X-ray Structure Validation Report for a publicly released PDB entry.

We welcome your comments at validation@mail.wwpdb.org

A user guide is available at

<https://www.wwpdb.org/validation/2017/XrayValidationReportHelp>

with specific help available everywhere you see the ⓘ symbol.

The following versions of software and data (see [references ⓘ](#)) were used in the production of this report:

MolProbity : 4.02b-467
Mogul : 1.7.3 (157068), CSD as539be (2018)
Xtriage (Phenix) : 1.13
EDS : trunk31020
Percentile statistics : 20171227.v01 (using entries in the PDB archive December 27th 2017)
Refmac : 5.8.0158
CCP4 : 7.0 (Gargrove)
Ideal geometry (proteins) : Engh & Huber (2001)
Ideal geometry (DNA, RNA) : Parkinson et al. (1996)
Validation Pipeline (wwPDB-VP) : trunk31020

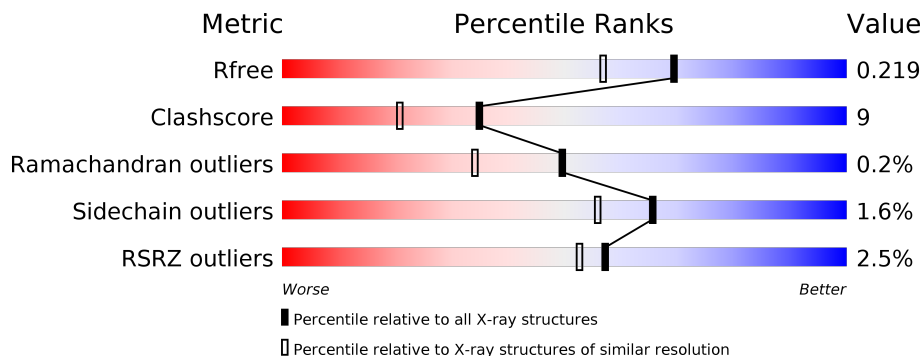
1 Overall quality at a glance

The following experimental techniques were used to determine the structure:

X-RAY DIFFRACTION

The reported resolution of this entry is 1.81 Å.

Percentile scores (ranging between 0-100) for global validation metrics of the entry are shown in the following graphic. The table shows the number of entries on which the scores are based.



Metric	Whole archive (#Entries)	Similar resolution (#Entries, resolution range(Å))
R_{free}	111664	6455 (1.84-1.80)
Clashscore	122126	7349 (1.84-1.80)
Ramachandran outliers	120053	7272 (1.84-1.80)
Sidechain outliers	120020	7272 (1.84-1.80)
RSRZ outliers	108989	6347 (1.84-1.80)

The table below summarises the geometric issues observed across the polymeric chains and their fit to the electron density. The red, orange, yellow and green segments on the lower bar indicate the fraction of residues that contain outliers for ≥ 3 , 2, 1 and 0 types of geometric quality criteria. A grey segment represents the fraction of residues that are not modelled. The numeric value for each fraction is indicated below the corresponding segment, with a dot representing fractions $\leq 5\%$. The upper red bar (where present) indicates the fraction of residues that have poor fit to the electron density. The numeric value is given above the bar.

Mol	Chain	Length	Quality of chain
1	L	218	
2	H	223	

2 Entry composition [i](#)

There are 4 unique types of molecules in this entry. The entry contains 3669 atoms, of which 0 are hydrogens and 0 are deuteriums.

In the tables below, the ZeroOcc column contains the number of atoms modelled with zero occupancy, the AltConf column contains the number of residues with at least one atom in alternate conformation and the Trace column contains the number of residues modelled with at most 2 atoms.

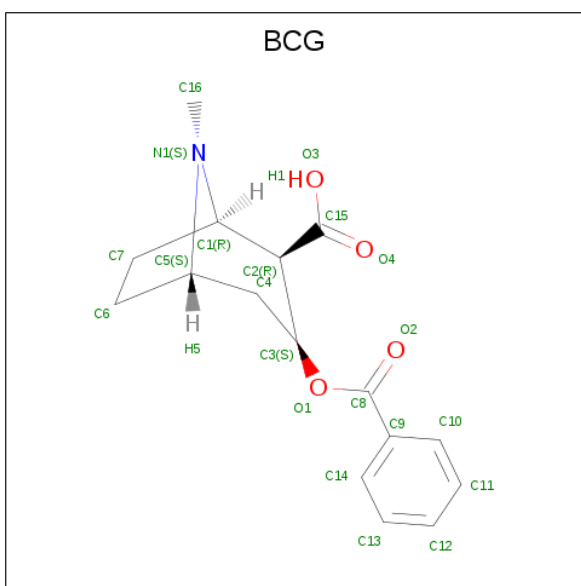
- Molecule 1 is a protein called FAB M82G2, LIGHT CHAIN.

Mol	Chain	Residues	Atoms					ZeroOcc	AltConf	Trace
			Total	C	N	O	S			
1	L	218	1680	1050	282	341	7	0	0	0

- Molecule 2 is a protein called FAB M82G2, HEAVY CHAIN.

Mol	Chain	Residues	Atoms					ZeroOcc	AltConf	Trace
			Total	C	N	O	S			
2	H	220	1635	1030	275	323	7	0	0	0

- Molecule 3 is 3-(BENZOYLOXY)-8-METHYL-8-AZABICYCLO[3.2.1]OCTANE-2-CARBOXYLIC ACID (three-letter code: BCG) (formula: C₁₆H₁₉NO₄).



Mol	Chain	Residues	Atoms				ZeroOcc	AltConf
			Total	C	N	O		
3	H	1	21	16	1	4	0	0

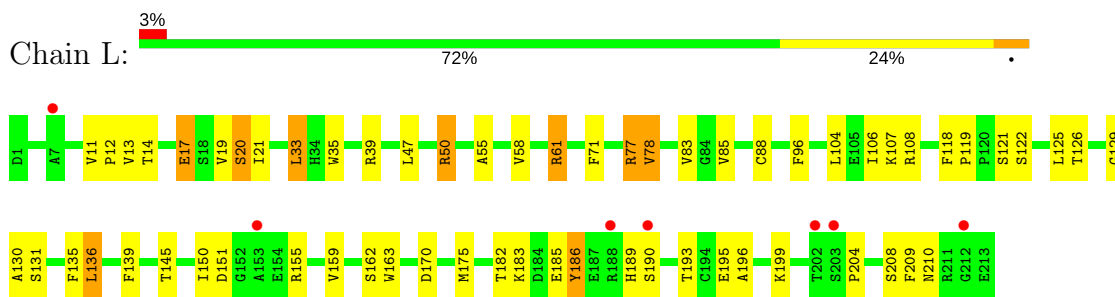
- Molecule 4 is water.

Mol	Chain	Residues	Atoms		ZeroOcc	AltConf
4	L	153	Total 153	O 153	0	0
4	H	180	Total 180	O 180	0	0

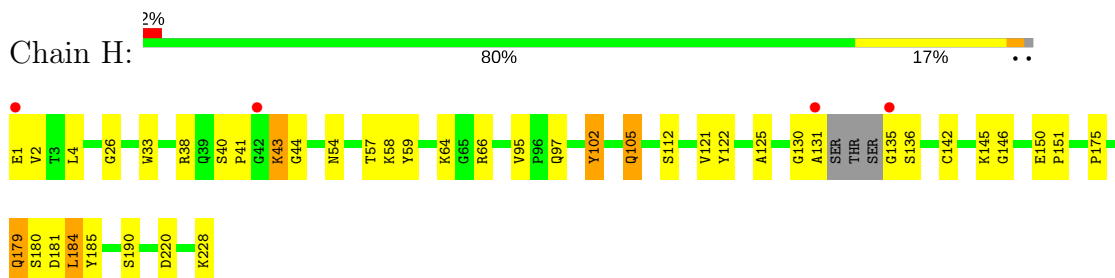
3 Residue-property plots [i](#)

These plots are drawn for all protein, RNA and DNA chains in the entry. The first graphic for a chain summarises the proportions of the various outlier classes displayed in the second graphic. The second graphic shows the sequence view annotated by issues in geometry and electron density. Residues are color-coded according to the number of geometric quality criteria for which they contain at least one outlier: green = 0, yellow = 1, orange = 2 and red = 3 or more. A red dot above a residue indicates a poor fit to the electron density ($RSRZ > 2$). Stretches of 2 or more consecutive residues without any outlier are shown as a green connector. Residues present in the sample, but not in the model, are shown in grey.

- Molecule 1: FAB M82G2, LIGHT CHAIN



- Molecule 2: FAB M82G2, HEAVY CHAIN



4 Data and refinement statistics i

Property	Value	Source
Space group	P 31 2 1	Depositor
Cell constants a, b, c, α , β , γ	75.17Å 75.17Å 151.28Å 90.00° 90.00° 120.00°	Depositor
Resolution (Å)	30.00 – 1.81 27.44 – 1.81	Depositor EDS
% Data completeness (in resolution range)	84.4 (30.00-1.81) 84.4 (27.44-1.81)	Depositor EDS
R_{merge}	0.05	Depositor
R_{sym}	(Not available)	Depositor
$\langle I/\sigma(I) \rangle$ ¹	3.27 (at 1.82Å)	Xtrriage
Refinement program	CNS	Depositor
R, R_{free}	0.178 , 0.216 0.180 , 0.219	Depositor DCC
R_{free} test set	1935 reflections (5.01%)	wwPDB-VP
Wilson B-factor (Å ²)	24.4	Xtrriage
Anisotropy	0.109	Xtrriage
Bulk solvent k_{sol} (e/Å ³), B_{sol} (Å ²)	0.37 , 50.2	EDS
L-test for twinning ²	$\langle L \rangle = 0.48$, $\langle L^2 \rangle = 0.32$	Xtrriage
Estimated twinning fraction	0.035 for -h,-k,l	Xtrriage
F_o, F_c correlation	0.96	EDS
Total number of atoms	3669	wwPDB-VP
Average B, all atoms (Å ²)	30.0	wwPDB-VP

Xtrriage's analysis on translational NCS is as follows: *The largest off-origin peak in the Patterson function is 4.45% of the height of the origin peak. No significant pseudotranslation is detected.*

¹Intensities estimated from amplitudes.

²Theoretical values of $\langle |L| \rangle$, $\langle L^2 \rangle$ for acentric reflections are 0.5, 0.333 respectively for untwinned datasets, and 0.375, 0.2 for perfectly twinned datasets.

5 Model quality i

5.1 Standard geometry i

Bond lengths and bond angles in the following residue types are not validated in this section: BCG

The Z score for a bond length (or angle) is the number of standard deviations the observed value is removed from the expected value. A bond length (or angle) with $|Z| > 5$ is considered an outlier worth inspection. RMSZ is the root-mean-square of all Z scores of the bond lengths (or angles).

Mol	Chain	Bond lengths		Bond angles	
		RMSZ	# Z >5	RMSZ	# Z >5
1	L	1.56	23/1722 (1.3%)	1.36	11/2341 (0.5%)
2	H	1.58	10/1676 (0.6%)	1.29	9/2287 (0.4%)
All	All	1.57	33/3398 (1.0%)	1.32	20/4628 (0.4%)

All (33) bond length outliers are listed below:

Mol	Chain	Res	Type	Atoms	Z	Observed(Å)	Ideal(Å)
1	L	163	TRP	CE3-CZ3	8.79	1.53	1.38
2	H	150	GLU	CD-OE1	8.19	1.34	1.25
1	L	83	VAL	CB-CG2	-7.95	1.36	1.52
1	L	17	GLU	CG-CD	7.54	1.63	1.51
1	L	78	VAL	CB-CG2	-7.00	1.38	1.52
1	L	55	ALA	CA-CB	6.88	1.66	1.52
2	H	102	TYR	CD2-CE2	6.63	1.49	1.39
2	H	150	GLU	CB-CG	-6.55	1.39	1.52
1	L	175	MET	CG-SD	6.48	1.98	1.81
1	L	186	TYR	CD1-CE1	6.43	1.49	1.39
1	L	19	VAL	CB-CG1	-6.23	1.39	1.52
2	H	185	TYR	CD1-CE1	6.22	1.48	1.39
1	L	35	TRP	CZ3-CH2	6.21	1.50	1.40
2	H	180	SER	CA-CB	6.09	1.62	1.52
1	L	159	VAL	CB-CG2	6.02	1.65	1.52
1	L	71	PHE	CE2-CZ	5.85	1.48	1.37
1	L	131	SER	CB-OG	-5.84	1.34	1.42
2	H	112	SER	CB-OG	5.71	1.49	1.42
1	L	20	SER	CB-OG	-5.60	1.34	1.42
2	H	105	GLN	CG-CD	5.60	1.64	1.51
1	L	77	ARG	CG-CD	5.57	1.65	1.51
1	L	139	PHE	CG-CD1	5.51	1.47	1.38
1	L	108	ARG	CZ-NH1	5.30	1.40	1.33
2	H	150	GLU	CG-CD	5.25	1.59	1.51

Continued on next page...

Continued from previous page...

Mol	Chain	Res	Type	Atoms	Z	Observed(Å)	Ideal(Å)
2	H	122	TYR	CD2-CE2	5.25	1.47	1.39
1	L	96	PHE	CD2-CE2	5.25	1.49	1.39
2	H	121	VAL	CB-CG1	5.24	1.63	1.52
1	L	121	SER	CB-OG	-5.23	1.35	1.42
1	L	83	VAL	CB-CG1	-5.20	1.42	1.52
1	L	58	VAL	CB-CG1	5.13	1.63	1.52
1	L	47	LEU	CG-CD2	5.09	1.70	1.51
1	L	61	ARG	CG-CD	5.04	1.64	1.51
1	L	85	VAL	CB-CG2	5.02	1.63	1.52

All (20) bond angle outliers are listed below:

Mol	Chain	Res	Type	Atoms	Z	Observed(°)	Ideal(°)
1	L	108	ARG	NE-CZ-NH2	-12.57	114.02	120.30
1	L	170	ASP	CB-CG-OD1	11.68	128.81	118.30
1	L	39	ARG	NE-CZ-NH1	9.39	125.00	120.30
2	H	220	ASP	CB-CG-OD2	-9.23	109.99	118.30
1	L	33	LEU	CA-CB-CG	-7.71	97.56	115.30
2	H	220	ASP	CB-CG-OD1	7.26	124.83	118.30
2	H	66	ARG	NE-CZ-NH1	6.50	123.55	120.30
2	H	95	VAL	N-CA-C	-6.17	94.35	111.00
1	L	50	ARG	NE-CZ-NH1	-6.03	117.28	120.30
2	H	142	CYS	CA-CB-SG	-5.92	103.33	114.00
1	L	170	ASP	CB-CG-OD2	-5.91	112.98	118.30
1	L	108	ARG	NE-CZ-NH1	5.88	123.24	120.30
2	H	33	TRP	N-CA-C	-5.49	96.17	111.00
2	H	41	PRO	N-CA-C	-5.44	97.97	112.10
1	L	39	ARG	NE-CZ-NH2	-5.43	117.59	120.30
2	H	38	ARG	NE-CZ-NH1	5.33	122.97	120.30
1	L	96	PHE	CB-CG-CD2	-5.31	117.09	120.80
1	L	78	VAL	CG1-CB-CG2	-5.22	102.55	110.90
1	L	136	LEU	CA-CB-CG	-5.04	103.70	115.30
2	H	4	LEU	N-CA-C	-5.04	97.40	111.00

There are no chirality outliers.

There are no planarity outliers.

5.2 Too-close contacts

In the following table, the Non-H and H(model) columns list the number of non-hydrogen atoms and hydrogen atoms in the chain respectively. The H(added) column lists the number of hydrogen

atoms added and optimized by MolProbity. The Clashes column lists the number of clashes within the asymmetric unit, whereas Symm-Clashes lists symmetry related clashes.

Mol	Chain	Non-H	H(model)	H(added)	Clashes	Symm-Clashes
1	L	1680	0	1600	36	0
2	H	1635	0	1594	24	0
3	H	21	0	18	0	0
4	H	180	0	0	4	0
4	L	153	0	0	3	1
All	All	3669	0	3212	58	1

The all-atom clashscore is defined as the number of clashes found per 1000 atoms (including hydrogen atoms). The all-atom clashscore for this structure is 9.

All (58) close contacts within the same asymmetric unit are listed below, sorted by their clash magnitude.

Atom-1	Atom-2	Interatomic distance (Å)	Clash overlap (Å)
1:L:21:ILE:HG22	4:L:358:HOH:O	1.69	0.92
2:H:179:GLN:HE22	2:H:181:ASP:H	1.10	0.91
2:H:131:ALA:HA	2:H:135:GLY:HA2	1.56	0.88
2:H:179:GLN:NE2	2:H:181:ASP:H	1.79	0.80
1:L:182:THR:OG1	1:L:185:GLU:HG3	1.83	0.79
2:H:131:ALA:HA	2:H:135:GLY:CA	2.18	0.74
1:L:11:VAL:HG11	1:L:21:ILE:HD11	1.67	0.73
2:H:179:GLN:HE22	2:H:181:ASP:N	1.85	0.72
2:H:125:ALA:O	2:H:228:LYS:HE3	1.95	0.67
2:H:181:ASP:O	2:H:184:LEU:HB2	2.02	0.60
2:H:131:ALA:CA	2:H:135:GLY:HA2	2.31	0.57
1:L:151:ASP:OD2	1:L:189:HIS:HB3	2.03	0.57
1:L:193:THR:HG22	1:L:208:SER:CB	2.34	0.56
1:L:145:THR:HG23	4:L:304:HOH:O	2.04	0.56
2:H:59:TYR:HB2	2:H:64:LYS:HG2	1.89	0.55
2:H:179:GLN:C	2:H:179:GLN:NE2	2.61	0.55
2:H:40:SER:OG	2:H:43:LYS:HG2	2.08	0.54
1:L:21:ILE:CG2	4:L:358:HOH:O	2.41	0.53
1:L:193:THR:HG22	1:L:208:SER:HB3	1.91	0.53
1:L:136:LEU:N	1:L:136:LEU:HD12	2.24	0.52
1:L:11:VAL:HG13	1:L:11:VAL:O	2.09	0.52
1:L:33:LEU:HD11	1:L:88:CYS:HB2	1.92	0.52
1:L:162:SER:OG	2:H:175:PRO:HD2	2.09	0.51
2:H:44:GLY:HA2	4:H:579:HOH:O	2.09	0.51
1:L:135:PHE:CE2	2:H:190:SER:HB3	2.46	0.51
2:H:57:THR:O	2:H:58:LYS:HD2	2.11	0.51

Continued on next page...

Continued from previous page...

Atom-1	Atom-2	Interatomic distance (Å)	Clash overlap (Å)
2:H:105:GLN:HB2	4:H:572:HOH:O	2.12	0.48
1:L:125:LEU:HD23	1:L:129:GLY:O	2.15	0.46
1:L:104:LEU:HD21	1:L:106:ILE:HD11	1.97	0.46
1:L:13:VAL:HG11	1:L:78:VAL:HG21	1.97	0.46
1:L:190:SER:O	1:L:210:ASN:HA	2.15	0.46
1:L:125:LEU:O	1:L:183:LYS:HD2	2.15	0.46
2:H:1:GLU:HG3	2:H:1:GLU:O	2.16	0.45
1:L:20:SER:O	1:L:21:ILE:HD13	2.16	0.45
1:L:14:THR:HG22	1:L:17:GLU:OE1	2.16	0.45
2:H:2:VAL:HG11	2:H:102:TYR:CG	2.53	0.44
1:L:195:GLU:CG	1:L:204:PRO:HB3	2.48	0.43
1:L:125:LEU:HD23	1:L:125:LEU:HA	1.69	0.43
1:L:14:THR:HG22	1:L:17:GLU:CD	2.38	0.43
1:L:122:SER:O	1:L:126:THR:HG23	2.19	0.43
1:L:136:LEU:HD21	1:L:196:ALA:HB2	2.00	0.43
1:L:130:ALA:CB	1:L:186:TYR:HB2	2.48	0.43
2:H:146:GLY:HA2	2:H:181:ASP:O	2.19	0.43
1:L:118:PHE:HA	1:L:119:PRO:HD3	1.93	0.42
2:H:97:GLN:CG	4:H:569:HOH:O	2.67	0.42
1:L:150:ILE:HD12	1:L:155:ARG:HH11	1.85	0.42
2:H:145:LYS:HB2	4:H:534:HOH:O	2.20	0.41
1:L:195:GLU:HG2	1:L:204:PRO:HB3	2.01	0.41
1:L:50:ARG:HH11	1:L:50:ARG:HD2	1.65	0.41
2:H:1:GLU:O	2:H:26:GLY:HA3	2.20	0.41
1:L:61:ARG:HD2	1:L:77:ARG:O	2.20	0.41
2:H:130:GLY:O	2:H:131:ALA:CB	2.69	0.41
1:L:104:LEU:HD21	1:L:106:ILE:CD1	2.51	0.40
1:L:193:THR:HG22	1:L:208:SER:HB2	2.02	0.40
1:L:136:LEU:CD2	1:L:196:ALA:HB2	2.52	0.40
1:L:12:PRO:HB2	1:L:107:LYS:HD3	2.02	0.40
2:H:181:ASP:O	2:H:184:LEU:CB	2.67	0.40
1:L:119:PRO:HG3	1:L:209:PHE:CG	2.57	0.40

All (1) symmetry-related close contacts are listed below. The label for Atom-2 includes the symmetry operator and encoded unit-cell translations to be applied.

Atom-1	Atom-2	Interatomic distance (Å)	Clash overlap (Å)
4:L:313:HOH:O	4:L:329:HOH:O[5_555]	2.17	0.03

5.3 Torsion angles [i](#)

5.3.1 Protein backbone [i](#)

In the following table, the Percentiles column shows the percent Ramachandran outliers of the chain as a percentile score with respect to all X-ray entries followed by that with respect to entries of similar resolution.

The Analysed column shows the number of residues for which the backbone conformation was analysed, and the total number of residues.

Mol	Chain	Analysed	Favoured	Allowed	Outliers	Percentiles	
1	L	216/218 (99%)	208 (96%)	8 (4%)	0	100	100
2	H	216/223 (97%)	212 (98%)	3 (1%)	1 (0%)	31	16
All	All	432/441 (98%)	420 (97%)	11 (2%)	1 (0%)	49	34

All (1) Ramachandran outliers are listed below:

Mol	Chain	Res	Type
2	H	184	LEU

5.3.2 Protein sidechains [i](#)

In the following table, the Percentiles column shows the percent sidechain outliers of the chain as a percentile score with respect to all X-ray entries followed by that with respect to entries of similar resolution.

The Analysed column shows the number of residues for which the sidechain conformation was analysed, and the total number of residues.

Mol	Chain	Analysed	Rotameric	Outliers	Percentiles	
1	L	192/192 (100%)	191 (100%)	1 (0%)	90	88
2	H	182/185 (98%)	177 (97%)	5 (3%)	48	33
All	All	374/377 (99%)	368 (98%)	6 (2%)	65	56

All (6) residues with a non-rotameric sidechain are listed below:

Mol	Chain	Res	Type
1	L	199	LYS
2	H	43	LYS
2	H	54	ASN
2	H	136	SER
2	H	151	PRO

Continued on next page...

Continued from previous page...

Mol	Chain	Res	Type
2	H	179	GLN

Some sidechains can be flipped to improve hydrogen bonding and reduce clashes. All (7) such sidechains are listed below:

Mol	Chain	Res	Type
1	L	137	ASN
1	L	189	HIS
2	H	54	ASN
2	H	55	HIS
2	H	82(A)	ASN
2	H	105	GLN
2	H	179	GLN

5.3.3 RNA [i](#)

There are no RNA molecules in this entry.

5.4 Non-standard residues in protein, DNA, RNA chains [i](#)

There are no non-standard protein/DNA/RNA residues in this entry.

5.5 Carbohydrates [i](#)

There are no carbohydrates in this entry.

5.6 Ligand geometry [i](#)

1 ligand is modelled in this entry.

In the following table, the Counts columns list the number of bonds (or angles) for which Mogul statistics could be retrieved, the number of bonds (or angles) that are observed in the model and the number of bonds (or angles) that are defined in the Chemical Component Dictionary. The Link column lists molecule types, if any, to which the group is linked. The Z score for a bond length (or angle) is the number of standard deviations the observed value is removed from the expected value. A bond length (or angle) with $|Z| > 2$ is considered an outlier worth inspection. RMSZ is the root-mean-square of all Z scores of the bond lengths (or angles).

Mol	Type	Chain	Res	Link	Bond lengths			Bond angles		
					Counts	RMSZ	$\# Z > 2$	Counts	RMSZ	$\# Z > 2$
3	BCG	H	401	-	20,23,23	2.38	8 (40%)	24,33,33	1.38	2 (8%)

In the following table, the Chirals column lists the number of chiral outliers, the number of chiral centers analysed, the number of these observed in the model and the number defined in the Chemical Component Dictionary. Similar counts are reported in the Torsion and Rings columns. '-' means no outliers of that kind were identified.

Mol	Type	Chain	Res	Link	Chirals	Torsions	Rings
3	BCG	H	401	-	-	0/8/37/37	0/4/3/3

All (8) bond length outliers are listed below:

Mol	Chain	Res	Type	Atoms	Z	Observed(Å)	Ideal(Å)
3	H	401	BCG	C2-C3	2.01	1.56	1.53
3	H	401	BCG	C13-C12	2.49	1.44	1.38
3	H	401	BCG	C10-C9	2.50	1.43	1.39
3	H	401	BCG	C7-C6	3.58	1.64	1.54
3	H	401	BCG	C1-N1	3.67	1.55	1.47
3	H	401	BCG	C11-C10	3.86	1.46	1.38
3	H	401	BCG	C16-N1	4.11	1.53	1.47
3	H	401	BCG	C4-C5	4.22	1.61	1.53

All (2) bond angle outliers are listed below:

Mol	Chain	Res	Type	Atoms	Z	Observed(°)	Ideal(°)
3	H	401	BCG	C11-C10-C9	-2.00	118.00	120.35
3	H	401	BCG	C3-O1-C8	4.17	124.73	117.39

There are no chirality outliers.

There are no torsion outliers.

There are no ring outliers.

No monomer is involved in short contacts.

5.7 Other polymers

There are no such residues in this entry.

5.8 Polymer linkage issues

There are no chain breaks in this entry.

6 Fit of model and data [i](#)

6.1 Protein, DNA and RNA chains [i](#)

In the following table, the column labelled ‘#RSRZ > 2’ contains the number (and percentage) of RSRZ outliers, followed by percent RSRZ outliers for the chain as percentile scores relative to all X-ray entries and entries of similar resolution. The OWAB column contains the minimum, median, 95th percentile and maximum values of the occupancy-weighted average B-factor per residue. The column labelled ‘Q < 0.9’ lists the number of (and percentage) of residues with an average occupancy less than 0.9.

Mol	Chain	Analysed	<RSRZ>	#RSRZ>2	OWAB(Å ²)	Q<0.9
1	L	218/218 (100%)	-0.26	7 (3%) 47 42	17, 28, 54, 76	0
2	H	220/223 (98%)	-0.43	4 (1%) 68 64	18, 26, 47, 72	0
All	All	438/441 (99%)	-0.35	11 (2%) 57 53	17, 27, 54, 76	0

All (11) RSRZ outliers are listed below:

Mol	Chain	Res	Type	RSRZ
2	H	131	ALA	5.4
1	L	7	ALA	4.2
2	H	1	GLU	3.0
1	L	188	ARG	2.9
1	L	203	SER	2.4
1	L	202	THR	2.3
1	L	212	GLY	2.2
2	H	135	GLY	2.1
1	L	190	SER	2.1
1	L	153	ALA	2.0
2	H	42	GLY	2.0

6.2 Non-standard residues in protein, DNA, RNA chains [i](#)

There are no non-standard protein/DNA/RNA residues in this entry.

6.3 Carbohydrates [i](#)

There are no carbohydrates in this entry.

6.4 Ligands [i](#)

In the following table, the Atoms column lists the number of modelled atoms in the group and the number defined in the chemical component dictionary. The B-factors column lists the minimum, median, 95th percentile and maximum values of B factors of atoms in the group. The column labelled 'Q< 0.9' lists the number of atoms with occupancy less than 0.9.

Mol	Type	Chain	Res	Atoms	RSCC	RSR	B-factors(Å ²)	Q<0.9
3	BCG	H	401	21/21	0.98	0.09	19,22,28,28	0

6.5 Other polymers [i](#)

There are no such residues in this entry.