



# Full wwPDB X-ray Structure Validation Report ⓘ

May 21, 2020 – 09:32 am BST

PDB ID : 6R4K  
Title : Structure of beta-glucosidase A from *Paenibacillus polymyxa* complexed with a monovalent inhibitor  
Authors : Jimenez-Ortega, E.; Sanz-Aparicio, J.  
Deposited on : 2019-03-22  
Resolution : 2.13 Å(reported)

This is a Full wwPDB X-ray Structure Validation Report for a publicly released PDB entry.

We welcome your comments at [validation@mail.wwpdb.org](mailto:validation@mail.wwpdb.org)

A user guide is available at

<https://www.wwpdb.org/validation/2017/XrayValidationReportHelp>

with specific help available everywhere you see the ⓘ symbol.

---

The following versions of software and data (see [references ⓘ](#)) were used in the production of this report:

MolProbity : 4.02b-467  
Mogul : 1.8.5 (274361), CSD as541be (2020)  
Xtriage (Phenix) : 1.13  
EDS : 2.11  
buster-report : 1.1.7 (2018)  
Percentile statistics : 20191225.v01 (using entries in the PDB archive December 25th 2019)  
Refmac : 5.8.0158  
CCP4 : 7.0.044 (Gargrove)  
Ideal geometry (proteins) : Engh & Huber (2001)  
Ideal geometry (DNA, RNA) : Parkinson et al. (1996)  
Validation Pipeline (wwPDB-VP) : 2.11

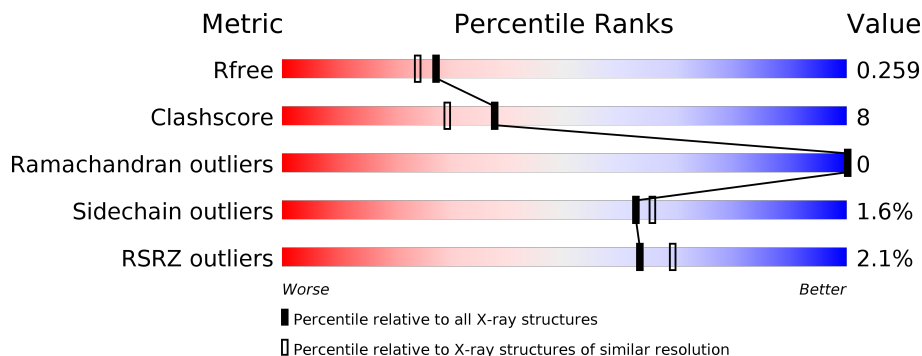
# 1 Overall quality at a glance

The following experimental techniques were used to determine the structure:

*X-RAY DIFFRACTION*

The reported resolution of this entry is 2.13 Å.

Percentile scores (ranging between 0-100) for global validation metrics of the entry are shown in the following graphic. The table shows the number of entries on which the scores are based.



Metric	Whole archive (#Entries)	Similar resolution (#Entries, resolution range(Å))
$R_{free}$	130704	2523 (2.16-2.12)
Clashscore	141614	2653 (2.16-2.12)
Ramachandran outliers	138981	2618 (2.16-2.12)
Sidechain outliers	138945	2617 (2.16-2.12)
RSRZ outliers	127900	2485 (2.16-2.12)

The table below summarises the geometric issues observed across the polymeric chains and their fit to the electron density. The red, orange, yellow and green segments on the lower bar indicate the fraction of residues that contain outliers for  $\geq 3$ , 2, 1 and 0 types of geometric quality criteria respectively. A grey segment represents the fraction of residues that are not modelled. The numeric value for each fraction is indicated below the corresponding segment, with a dot representing fractions  $\leq 5\%$ . The upper red bar (where present) indicates the fraction of residues that have poor fit to the electron density. The numeric value is given above the bar.

Mol	Chain	Length	Quality of chain
1	A	448	
1	B	448	

## 2 Entry composition [i](#)

There are 3 unique types of molecules in this entry. The entry contains 7808 atoms, of which 0 are hydrogens and 0 are deuteriums.

In the tables below, the ZeroOcc column contains the number of atoms modelled with zero occupancy, the AltConf column contains the number of residues with at least one atom in alternate conformation and the Trace column contains the number of residues modelled with at most 2 atoms.

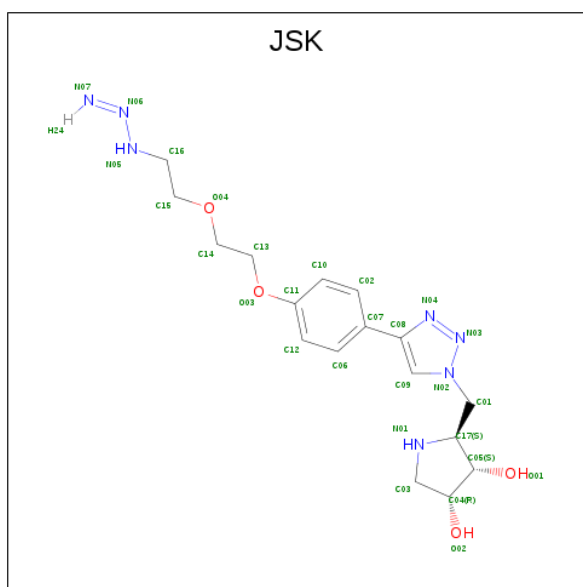
- Molecule 1 is a protein called Beta-glucosidase A.

Mol	Chain	Residues	Atoms					ZeroOcc	AltConf	Trace
			Total	C	N	O	S			
1	A	448	3647	2332	629	669	17	0	0	0
1	B	448	3647	2332	629	669	17	0	0	0

There are 12 discrepancies between the modelled and reference sequences:

Chain	Residue	Modelled	Actual	Comment	Reference
A	96	LYS	GLU	conflict	UNP P22073
A	385	ALA	THR	conflict	UNP P22073
A	411	SER	ASN	conflict	UNP P22073
A	416	ILE	MET	conflict	UNP P22073
A	437	LYS	ASN	conflict	UNP P22073
A	440	GLY	SER	conflict	UNP P22073
B	96	LYS	GLU	conflict	UNP P22073
B	385	ALA	THR	conflict	UNP P22073
B	411	SER	ASN	conflict	UNP P22073
B	416	ILE	MET	conflict	UNP P22073
B	437	LYS	ASN	conflict	UNP P22073
B	440	GLY	SER	conflict	UNP P22073

- Molecule 2 is (2 {S},3 {S},4 {R})-2-[[4-[4-[2-[2-(2-azanylidenehydrazinyl)ethoxy]ethoxy]phenyl]-1,2,3-triazol-1-yl]methyl]pyrrolidine-3,4-diol (three-letter code: JSK) (formula: C<sub>17</sub>H<sub>25</sub>N<sub>7</sub>O<sub>4</sub>).



Mol	Chain	Residues	Atoms			ZeroOcc	AltConf	
			Total	C	N			O
2	A	1	28	17	7	4	0	0
2	B	1	28	17	7	4	0	0

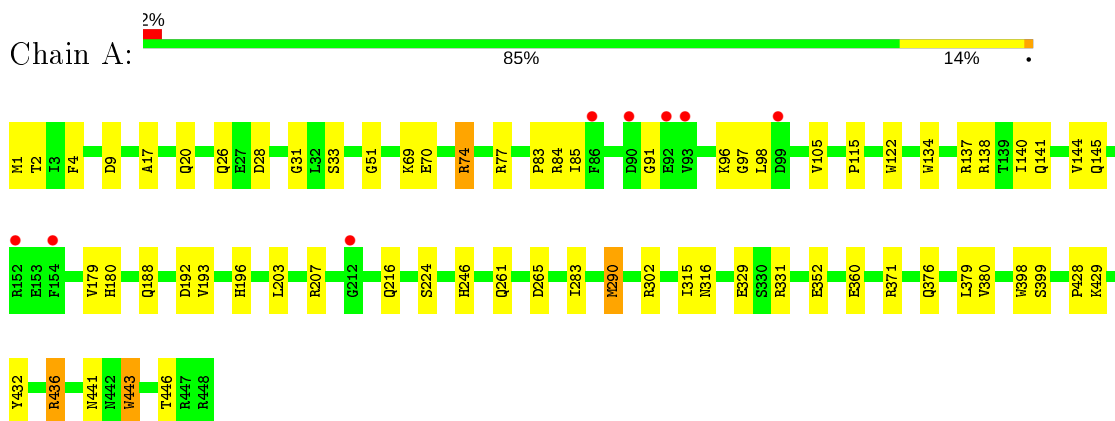
- Molecule 3 is water.

Mol	Chain	Residues	Atoms		ZeroOcc	AltConf
			Total	O		
3	A	263	263	263	0	0
3	B	195	195	195	0	0

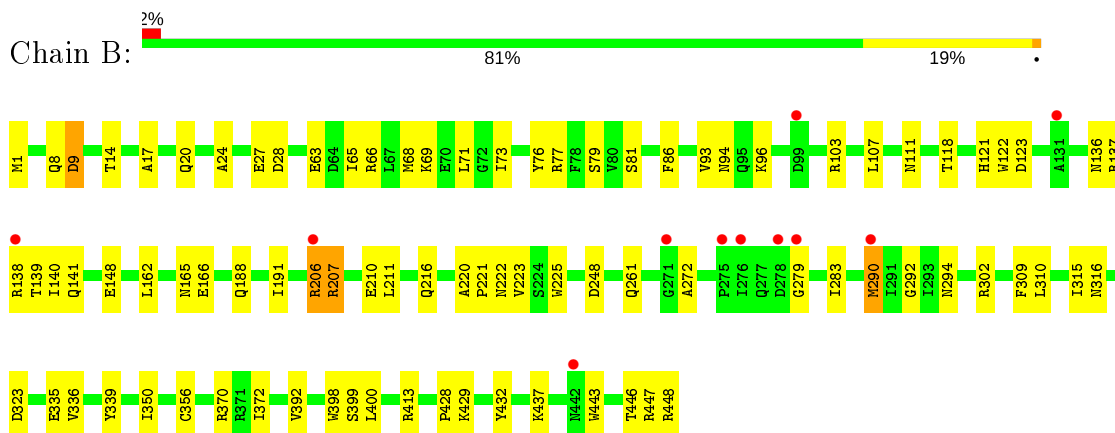
### 3 Residue-property plots [i](#)

These plots are drawn for all protein, RNA and DNA chains in the entry. The first graphic for a chain summarises the proportions of the various outlier classes displayed in the second graphic. The second graphic shows the sequence view annotated by issues in geometry and electron density. Residues are color-coded according to the number of geometric quality criteria for which they contain at least one outlier: green = 0, yellow = 1, orange = 2 and red = 3 or more. A red dot above a residue indicates a poor fit to the electron density ( $RSRZ > 2$ ). Stretches of 2 or more consecutive residues without any outlier are shown as a green connector. Residues present in the sample, but not in the model, are shown in grey.

- Molecule 1: Beta-glucosidase A



- Molecule 1: Beta-glucosidase A



## 4 Data and refinement statistics

Property	Value	Source
Space group	P 4 21 2	Depositor
Cell constants a, b, c, $\alpha$ , $\beta$ , $\gamma$	146.72Å 146.72Å 140.06Å 90.00° 90.00° 90.00°	Depositor
Resolution (Å)	48.65 – 2.13 48.65 – 2.13	Depositor EDS
% Data completeness (in resolution range)	99.8 (48.65-2.13) 99.8 (48.65-2.13)	Depositor EDS
$R_{merge}$	0.10	Depositor
$R_{sym}$	(Not available)	Depositor
$\langle I/\sigma(I) \rangle$ <sup>1</sup>	1.16 (at 2.12Å)	Xtriage
Refinement program	PHENIX (1.14_3260: ???)	Depositor
R, $R_{free}$	0.216 , 0.241 0.234 , 0.259	Depositor DCC
$R_{free}$ test set	4447 reflections (5.20%)	wwPDB-VP
Wilson B-factor (Å <sup>2</sup> )	30.3	Xtriage
Anisotropy	0.249	Xtriage
Bulk solvent $k_{sol}$ (e/Å <sup>3</sup> ), $B_{sol}$ (Å <sup>2</sup> )	0.35 , 44.0	EDS
L-test for twinning <sup>2</sup>	$\langle  L  \rangle = 0.40$ , $\langle L^2 \rangle = 0.23$	Xtriage
Estimated twinning fraction	0.068 for -h,-l,-k 0.056 for l,-k,h	Xtriage
$F_o, F_c$ correlation	0.92	EDS
Total number of atoms	7808	wwPDB-VP
Average B, all atoms (Å <sup>2</sup> )	35.0	wwPDB-VP

Xtriage's analysis on translational NCS is as follows: *The largest off-origin peak in the Patterson function is 3.74% of the height of the origin peak. No significant pseudotranslation is detected.*

<sup>1</sup> Intensities estimated from amplitudes.

<sup>2</sup> Theoretical values of  $\langle |L| \rangle$ ,  $\langle L^2 \rangle$  for acentric reflections are 0.5, 0.333 respectively for untwinned datasets, and 0.375, 0.2 for perfectly twinned datasets.

## 5 Model quality

### 5.1 Standard geometry

Bond lengths and bond angles in the following residue types are not validated in this section: JSK

The Z score for a bond length (or angle) is the number of standard deviations the observed value is removed from the expected value. A bond length (or angle) with  $|Z| > 5$  is considered an outlier worth inspection. RMSZ is the root-mean-square of all Z scores of the bond lengths (or angles).

Mol	Chain	Bond lengths		Bond angles	
		RMSZ	# Z  >5	RMSZ	# Z  >5
1	A	0.55	0/3757	0.69	0/5108
1	B	0.52	0/3757	0.65	0/5108
All	All	0.54	0/7514	0.67	0/10216

There are no bond length outliers.

There are no bond angle outliers.

There are no chirality outliers.

There are no planarity outliers.

### 5.2 Too-close contacts

In the following table, the Non-H and H(model) columns list the number of non-hydrogen atoms and hydrogen atoms in the chain respectively. The H(added) column lists the number of hydrogen atoms added and optimized by MolProbity. The Clashes column lists the number of clashes within the asymmetric unit, whereas Symm-Clashes lists symmetry related clashes.

Mol	Chain	Non-H	H(model)	H(added)	Clashes	Symm-Clashes
1	A	3647	0	3442	49	0
1	B	3647	0	3442	64	0
2	A	28	0	0	1	0
2	B	28	0	0	0	0
3	A	263	0	0	4	0
3	B	195	0	0	6	0
All	All	7808	0	6884	110	0

The all-atom clashscore is defined as the number of clashes found per 1000 atoms (including hydrogen atoms). The all-atom clashscore for this structure is 8.

All (110) close contacts within the same asymmetric unit are listed below, sorted by their clash

magnitude.

Atom-1	Atom-2	Interatomic distance (Å)	Clash overlap (Å)
1:B:14:THR:CG2	1:B:400:LEU:HB2	1.91	0.99
1:A:316:ASN:O	1:B:446:THR:HG21	1.73	0.89
1:B:14:THR:HG21	1:B:400:LEU:HB2	1.58	0.86
1:B:148:GLU:HG3	3:B:731:HOH:O	1.83	0.77
1:A:17:ALA:HB3	1:A:20:GLN:HE21	1.52	0.74
1:B:86:PHE:CE1	1:B:93:VAL:HG12	2.23	0.74
1:A:70:GLU:HB3	1:A:436:ARG:HH21	1.53	0.74
1:B:17:ALA:HB3	1:B:20:GLN:HE21	1.53	0.73
1:B:81:SER:HA	1:B:123:ASP:OD2	1.89	0.72
1:B:68:MET:HB2	1:B:73:ILE:HD11	1.71	0.72
1:A:302:ARG:HG2	1:A:315:ILE:HD11	1.73	0.71
1:A:1:MET:HB2	1:B:316:ASN:HD22	1.56	0.70
1:B:103:ARG:NH2	3:B:602:HOH:O	2.28	0.67
1:B:136:ASN:O	1:B:139:THR:HG22	1.95	0.67
1:B:77:ARG:NH2	1:B:165:ASN:OD1	2.27	0.66
1:A:216:GLN:HG3	1:A:290:MET:CE	2.27	0.65
1:B:261:GLN:NE2	3:B:604:HOH:O	2.30	0.64
1:B:207:ARG:HB3	3:B:731:HOH:O	1.98	0.63
1:B:14:THR:HG21	1:B:400:LEU:HD13	1.80	0.63
1:A:216:GLN:HG3	1:A:290:MET:HE1	1.81	0.61
1:B:279:GLY:O	1:B:283:ILE:HG13	2.01	0.61
1:B:94:ASN:OD1	1:B:96:LYS:HB2	2.01	0.61
1:A:138:ARG:HD2	1:A:138:ARG:O	2.01	0.60
1:B:216:GLN:HG3	1:B:290:MET:CE	2.34	0.58
1:B:9:ASP:OD1	1:B:9:ASP:N	2.34	0.58
1:A:105:VAL:HG13	1:A:115:PRO:HG2	1.87	0.57
1:A:371:ARG:NH2	3:A:606:HOH:O	2.35	0.57
1:B:65:ILE:HA	1:B:68:MET:HG2	1.86	0.57
1:A:179:VAL:HG12	1:A:180:HIS:HD2	1.70	0.56
1:A:85:ILE:HD12	1:A:98:LEU:HD23	1.86	0.56
1:B:165:ASN:ND2	1:B:166:GLU:HG3	2.21	0.56
1:B:302:ARG:HG2	1:B:315:ILE:HD11	1.87	0.55
1:B:372:ILE:HG22	1:B:448:ARG:HH12	1.71	0.55
1:B:447:ARG:O	1:B:448:ARG:OXT	2.26	0.53
1:A:77:ARG:HH21	1:A:352:GLU:HG3	1.75	0.52
1:B:137:ARG:HA	1:B:140:ILE:HG13	1.90	0.52
1:B:309:PHE:CE2	1:B:310:LEU:HD13	2.44	0.52
1:A:179:VAL:HG12	1:A:180:HIS:CD2	2.45	0.52
1:B:248:ASP:OD2	1:B:339:TYR:OH	2.21	0.52
1:A:360:GLU:HB3	3:A:674:HOH:O	2.11	0.51
1:B:68:MET:HE1	1:B:76:TYR:CD1	2.45	0.51

*Continued on next page...*



*Continued from previous page...*

Atom-1	Atom-2	Interatomic distance (Å)	Clash overlap (Å)
1:A:290:MET:N	1:A:290:MET:SD	2.84	0.51
1:A:316:ASN:HD22	1:B:1:MET:N	2.09	0.51
1:B:68:MET:HE2	1:B:73:ILE:HD11	1.93	0.50
1:A:188:GLN:NE2	1:A:192:ASP:OD1	2.42	0.50
1:B:63:GLU:HG3	1:B:66:ARG:HH12	1.76	0.50
1:A:329:GLU:HG2	1:A:331:ARG:HG2	1.94	0.50
1:A:261:GLN:NE2	1:A:265:ASP:OD1	2.44	0.50
1:B:69:LYS:NZ	1:B:111:ASN:O	2.26	0.49
1:B:225:TRP:NE1	1:B:335:GLU:HG2	2.27	0.49
1:B:206:ARG:O	1:B:210:GLU:HG3	2.13	0.48
1:B:323:ASP:OD1	1:B:370:ARG:NH2	2.35	0.48
1:A:9:ASP:O	1:A:74:ARG:NH1	2.46	0.47
1:B:222:ASN:HA	1:B:294:ASN:HB2	1.96	0.47
1:A:224:SER:HB2	1:A:246:HIS:CG	2.50	0.47
1:A:70:GLU:O	1:A:436:ARG:NE	2.35	0.47
1:B:122:TRP:CD1	1:B:122:TRP:N	2.82	0.46
1:B:216:GLN:HG3	1:B:290:MET:HE3	1.97	0.46
1:B:350:ILE:HD11	1:B:392:VAL:CG1	2.46	0.46
1:B:162:LEU:HD22	1:B:220:ALA:HB2	1.98	0.46
1:B:398:TRP:HA	1:B:399:SER:HA	1.72	0.46
1:B:68:MET:HE3	1:B:68:MET:HB3	1.77	0.45
1:A:122:TRP:N	1:A:122:TRP:CD1	2.84	0.45
1:A:51:GLY:O	3:A:601:HOH:O	2.21	0.45
1:B:14:THR:HG21	1:B:400:LEU:CD1	2.46	0.45
1:A:376:GLN:O	1:A:380:VAL:HG23	2.17	0.45
1:B:356:CYS:HA	1:B:413:ARG:O	2.17	0.44
1:A:70:GLU:HB3	1:A:436:ARG:NH2	2.28	0.44
1:A:26:GLN:HG2	3:A:786:HOH:O	2.17	0.44
1:A:428:PRO:HB3	1:A:432:TYR:CG	2.53	0.44
1:B:223:VAL:HG22	1:B:336:VAL:HG21	1.99	0.44
1:A:91:GLY:HA2	1:A:145:GLN:OE1	2.17	0.44
1:B:14:THR:HG21	1:B:400:LEU:CB	2.37	0.43
1:B:221:PRO:HD2	1:B:292:GLY:O	2.18	0.43
1:A:376:GLN:HG2	1:A:446:THR:HG22	2.00	0.43
1:B:225:TRP:CE2	1:B:335:GLU:HG2	2.53	0.43
1:A:77:ARG:NH2	1:A:352:GLU:HG3	2.33	0.43
1:B:211:LEU:HD11	3:B:731:HOH:O	2.19	0.43
1:B:79:SER:HA	1:B:118:THR:O	2.19	0.42
1:A:20:GLN:NE2	2:A:501:JSK:O02	2.51	0.42
1:A:134:TRP:CB	1:A:193:VAL:HG13	2.48	0.42
1:A:203:LEU:HG	1:A:283:ILE:HG21	2.01	0.42

*Continued on next page...*

Continued from previous page...

Atom-1	Atom-2	Interatomic distance (Å)	Clash overlap (Å)
1:B:71:LEU:HG	1:B:73:ILE:HG23	2.01	0.42
1:A:429:LYS:O	1:A:432:TYR:HB3	2.20	0.42
1:A:441:ASN:HB3	1:A:443:TRP:CE3	2.55	0.41
1:B:79:SER:CB	1:B:121:HIS:HB2	2.50	0.41
1:A:84:ARG:O	1:A:97:GLY:HA3	2.20	0.41
1:B:20:GLN:NE2	1:B:398:TRP:CH2	2.89	0.41
1:A:379:LEU:HD23	1:A:379:LEU:HA	1.89	0.41
1:B:428:PRO:HB3	1:B:432:TYR:CG	2.55	0.41
1:A:31:GLY:O	1:A:83:PRO:HB2	2.20	0.41
1:A:428:PRO:HB3	1:A:432:TYR:CD1	2.55	0.41
1:B:188:GLN:OE1	1:B:272:ALA:HA	2.20	0.41
1:B:429:LYS:O	1:B:432:TYR:HB3	2.20	0.41
1:A:140:ILE:O	1:A:144:VAL:HG23	2.20	0.41
1:B:350:ILE:HD12	1:B:350:ILE:N	2.35	0.41
1:B:107:LEU:HA	1:B:107:LEU:HD23	1.66	0.41
1:A:69:LYS:HD2	1:A:69:LYS:HA	1.70	0.41
1:B:191:ILE:HD12	1:B:272:ALA:HB1	2.01	0.41
1:A:137:ARG:HG2	1:A:196:HIS:NE2	2.36	0.41
1:A:28:ASP:HB3	1:A:96:LYS:HB3	2.03	0.41
1:A:207:ARG:HD2	1:A:207:ARG:HA	1.60	0.41
1:A:398:TRP:HA	1:A:399:SER:HA	1.81	0.41
1:B:437:LYS:HB3	1:B:437:LYS:HE3	1.92	0.41
1:B:28:ASP:HB3	1:B:96:LYS:HB3	2.02	0.40
1:B:350:ILE:HD12	1:B:350:ILE:H	1.85	0.40
1:A:141:GLN:HA	1:A:141:GLN:OE1	2.20	0.40
1:B:141:GLN:NE2	3:B:618:HOH:O	2.55	0.40
1:A:2:THR:HB	1:A:4:PHE:CE1	2.57	0.40
1:B:24:ALA:HB1	1:B:27:GLU:HB3	2.03	0.40

There are no symmetry-related clashes.

## 5.3 Torsion angles [i](#)

### 5.3.1 Protein backbone [i](#)

In the following table, the Percentiles column shows the percent Ramachandran outliers of the chain as a percentile score with respect to all X-ray entries followed by that with respect to entries of similar resolution.

The Analysed column shows the number of residues for which the backbone conformation was analysed, and the total number of residues.

Mol	Chain	Analysed	Favoured	Allowed	Outliers	Percentiles	
1	A	446/448 (100%)	432 (97%)	14 (3%)	0	100	100
1	B	446/448 (100%)	433 (97%)	13 (3%)	0	100	100
All	All	892/896 (100%)	865 (97%)	27 (3%)	0	100	100

There are no Ramachandran outliers to report.

### 5.3.2 Protein sidechains [i](#)

In the following table, the Percentiles column shows the percent sidechain outliers of the chain as a percentile score with respect to all X-ray entries followed by that with respect to entries of similar resolution.

The Analysed column shows the number of residues for which the sidechain conformation was analysed, and the total number of residues.

Mol	Chain	Analysed	Rotameric	Outliers	Percentiles	
1	A	382/382 (100%)	377 (99%)	5 (1%)	69	73
1	B	382/382 (100%)	375 (98%)	7 (2%)	59	60
All	All	764/764 (100%)	752 (98%)	12 (2%)	62	65

All (12) residues with a non-rotameric sidechain are listed below:

Mol	Chain	Res	Type
1	A	33	SER
1	A	74	ARG
1	A	290	MET
1	A	436	ARG
1	A	443	TRP
1	B	8	GLN
1	B	9	ASP
1	B	138	ARG
1	B	206	ARG
1	B	207	ARG
1	B	290	MET
1	B	443	TRP

Some sidechains can be flipped to improve hydrogen bonding and reduce clashes. All (5) such sidechains are listed below:

Mol	Chain	Res	Type
1	A	20	GLN

*Continued on next page...*

*Continued from previous page...*

Mol	Chain	Res	Type
1	A	180	HIS
1	A	316	ASN
1	B	20	GLN
1	B	316	ASN

### 5.3.3 RNA [i](#)

There are no RNA molecules in this entry.

### 5.4 Non-standard residues in protein, DNA, RNA chains [i](#)

There are no non-standard protein/DNA/RNA residues in this entry.

### 5.5 Carbohydrates [i](#)

There are no carbohydrates in this entry.

### 5.6 Ligand geometry [i](#)

2 ligands are modelled in this entry.

In the following table, the Counts columns list the number of bonds (or angles) for which Mogul statistics could be retrieved, the number of bonds (or angles) that are observed in the model and the number of bonds (or angles) that are defined in the Chemical Component Dictionary. The Link column lists molecule types, if any, to which the group is linked. The Z score for a bond length (or angle) is the number of standard deviations the observed value is removed from the expected value. A bond length (or angle) with  $|Z| > 2$  is considered an outlier worth inspection. RMSZ is the root-mean-square of all Z scores of the bond lengths (or angles).

Mol	Type	Chain	Res	Link	Bond lengths			Bond angles		
					Counts	RMSZ	# Z  > 2	Counts	RMSZ	# Z  > 2
2	JSK	B	501	-	26,30,30	4.11	13 (50%)	26,39,39	3.53	9 (34%)
2	JSK	A	501	-	26,30,30	4.39	14 (53%)	26,39,39	3.58	10 (38%)

In the following table, the Chirals column lists the number of chiral outliers, the number of chiral centers analysed, the number of these observed in the model and the number defined in the Chemical Component Dictionary. Similar counts are reported in the Torsion and Rings columns. '-' means no outliers of that kind were identified.

Mol	Type	Chain	Res	Link	Chirals	Torsions	Rings
2	JSK	B	501	-	-	2/12/30/30	0/3/3/3
2	JSK	A	501	-	-	1/12/30/30	0/3/3/3

All (27) bond length outliers are listed below:

Mol	Chain	Res	Type	Atoms	Z	Observed(Å)	Ideal(Å)
2	A	501	JSK	C09-N02	15.55	1.51	1.35
2	B	501	JSK	C09-N02	14.87	1.51	1.35
2	A	501	JSK	C16-N05	9.88	1.56	1.45
2	B	501	JSK	C07-C08	-7.91	1.36	1.48
2	B	501	JSK	C16-N05	7.82	1.54	1.45
2	A	501	JSK	C07-C08	-7.10	1.37	1.48
2	A	501	JSK	C03-C04	5.83	1.61	1.53
2	B	501	JSK	C03-C04	4.68	1.60	1.53
2	B	501	JSK	O03-C11	3.60	1.46	1.37
2	A	501	JSK	C10-C02	2.97	1.44	1.38
2	A	501	JSK	C06-C07	2.87	1.45	1.39
2	A	501	JSK	N04-N03	-2.77	1.29	1.34
2	A	501	JSK	C01-N02	2.77	1.54	1.47
2	B	501	JSK	C17-N01	2.64	1.53	1.48
2	A	501	JSK	C02-C07	2.60	1.44	1.39
2	A	501	JSK	O03-C11	2.60	1.43	1.37
2	B	501	JSK	N04-N03	-2.46	1.30	1.34
2	B	501	JSK	C01-N02	2.44	1.54	1.47
2	A	501	JSK	O01-C05	2.38	1.48	1.43
2	B	501	JSK	C10-C02	2.38	1.43	1.38
2	B	501	JSK	N03-N02	-2.37	1.29	1.34
2	B	501	JSK	C06-C07	2.35	1.44	1.39
2	A	501	JSK	C10-C11	2.26	1.43	1.38
2	A	501	JSK	C16-C15	2.25	1.58	1.50
2	B	501	JSK	C05-C17	-2.12	1.51	1.53
2	B	501	JSK	C08-N04	-2.08	1.31	1.36
2	A	501	JSK	C17-N01	2.03	1.52	1.48

All (19) bond angle outliers are listed below:

Mol	Chain	Res	Type	Atoms	Z	Observed(°)	Ideal(°)
2	B	501	JSK	N04-N03-N02	14.81	118.48	107.31
2	A	501	JSK	N04-N03-N02	14.19	118.01	107.31
2	A	501	JSK	C06-C07-C08	-5.63	112.39	121.28
2	A	501	JSK	C01-N02-C09	-4.40	119.48	129.82
2	B	501	JSK	C01-N02-C09	-4.32	119.66	129.82
2	A	501	JSK	C01-C17-N01	-3.96	97.12	111.12

*Continued on next page...*

Continued from previous page...

Mol	Chain	Res	Type	Atoms	Z	Observed(°)	Ideal(°)
2	B	501	JSK	C07-C08-N04	3.91	127.21	120.96
2	B	501	JSK	C01-C17-N01	-3.78	97.76	111.12
2	A	501	JSK	C02-C07-C08	3.67	127.08	121.28
2	B	501	JSK	O01-C05-C04	-3.36	103.94	112.04
2	A	501	JSK	O03-C13-C14	-3.26	97.68	108.72
2	B	501	JSK	C09-C08-C07	-3.05	122.26	129.15
2	B	501	JSK	C06-C07-C08	-3.04	116.49	121.28
2	B	501	JSK	C13-O03-C11	-2.67	110.95	117.93
2	A	501	JSK	O02-C04-C03	2.35	116.42	110.90
2	A	501	JSK	C15-C16-N05	-2.19	105.78	110.99
2	B	501	JSK	C15-O04-C14	2.13	122.53	113.29
2	A	501	JSK	C10-C02-C07	-2.13	118.06	121.13
2	A	501	JSK	O01-C05-C17	2.11	118.58	112.92

There are no chirality outliers.

All (3) torsion outliers are listed below:

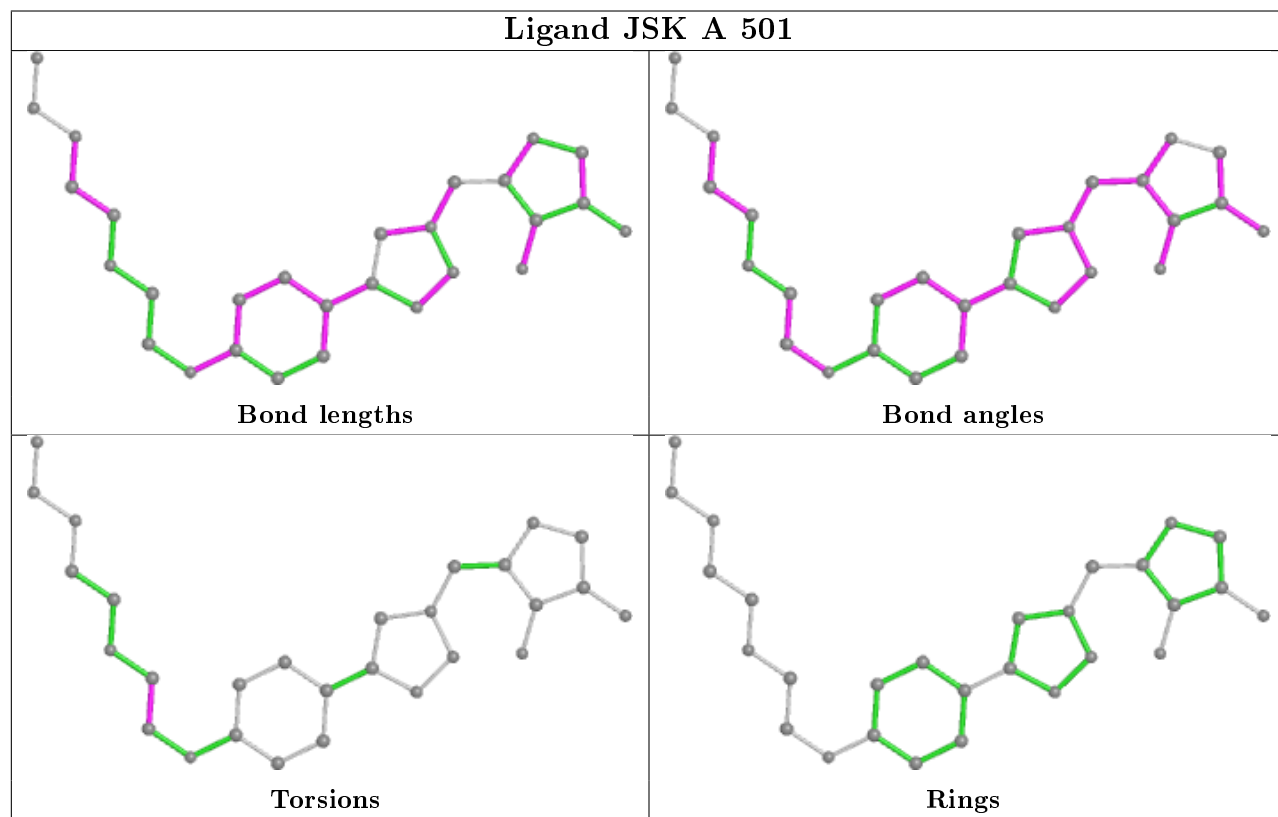
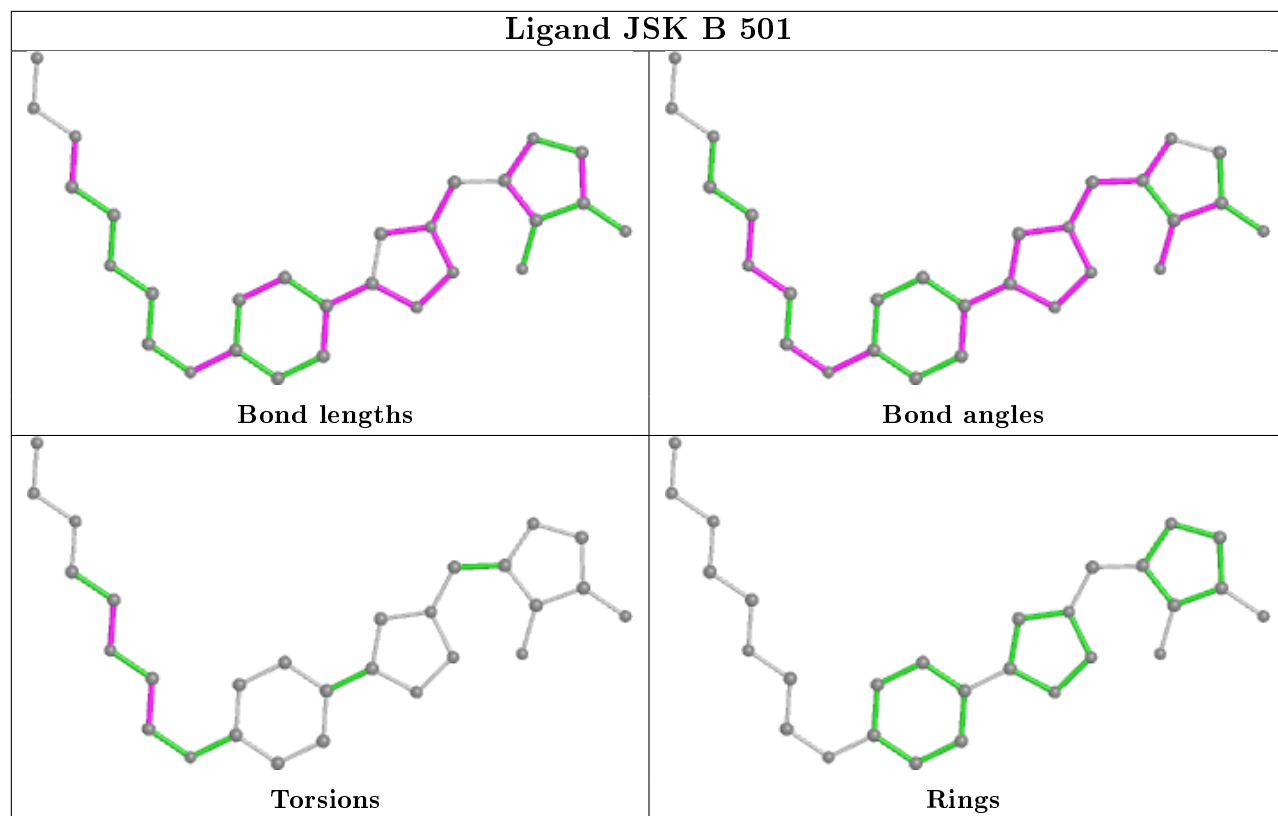
Mol	Chain	Res	Type	Atoms
2	A	501	JSK	O03-C13-C14-O04
2	B	501	JSK	O03-C13-C14-O04
2	B	501	JSK	C16-C15-O04-C14

There are no ring outliers.

1 monomer is involved in 1 short contact:

Mol	Chain	Res	Type	Clashes	Symm-Clashes
2	A	501	JSK	1	0

The following is a two-dimensional graphical depiction of Mogul quality analysis of bond lengths, bond angles, torsion angles, and ring geometry for all instances of the Ligand of Interest. In addition, ligands with molecular weight > 250 and outliers as shown on the validation Tables will also be included. For torsion angles, if less than 5% of the Mogul distribution of torsion angles is within 10 degrees of the torsion angle in question, then that torsion angle is considered an outlier. Any bond that is central to one or more torsion angles identified as an outlier by Mogul will be highlighted in the graph. For rings, the root-mean-square deviation (RMSD) between the ring in question and similar rings identified by Mogul is calculated over all ring torsion angles. If the average RMSD is greater than 60 degrees and the minimal RMSD between the ring in question and any Mogul-identified rings is also greater than 60 degrees, then that ring is considered an outlier. The outliers are highlighted in purple. The color gray indicates Mogul did not find sufficient equivalents in the CSD to analyse the geometry.



## 5.7 Other polymers [i](#)

There are no such residues in this entry.

## 5.8 Polymer linkage issues [i](#)

There are no chain breaks in this entry.



## 6 Fit of model and data [i](#)

### 6.1 Protein, DNA and RNA chains [i](#)

In the following table, the column labelled ‘#RSRZ> 2’ contains the number (and percentage) of RSRZ outliers, followed by percent RSRZ outliers for the chain as percentile scores relative to all X-ray entries and entries of similar resolution. The OWAB column contains the minimum, median, 95<sup>th</sup> percentile and maximum values of the occupancy-weighted average B-factor per residue. The column labelled ‘Q< 0.9’ lists the number of (and percentage) of residues with an average occupancy less than 0.9.

Mol	Chain	Analysed	<RSRZ>	#RSRZ>2	OWAB(Å <sup>2</sup> )	Q<0.9
1	A	448/448 (100%)	-0.03	8 (1%) 68 74	18, 30, 46, 59	1 (0%)
1	B	448/448 (100%)	0.20	11 (2%) 57 64	20, 37, 53, 70	1 (0%)
All	All	896/896 (100%)	0.08	19 (2%) 63 69	18, 33, 51, 70	2 (0%)

All (19) RSRZ outliers are listed below:

Mol	Chain	Res	Type	RSRZ
1	B	276	ILE	4.2
1	A	212	GLY	4.0
1	B	279	GLY	3.7
1	B	271	GLY	3.5
1	B	442	ASN	3.4
1	A	93	VAL	3.4
1	B	138	ARG	3.1
1	B	278	ASP	2.9
1	A	86	PHE	2.6
1	B	275	PRO	2.6
1	B	99	ASP	2.6
1	B	206	ARG	2.5
1	A	152	ARG	2.4
1	A	99	ASP	2.4
1	A	92	GLU	2.4
1	B	290	MET	2.2
1	A	90	ASP	2.2
1	A	154	PHE	2.1
1	B	131	ALA	2.1

### 6.2 Non-standard residues in protein, DNA, RNA chains [i](#)

There are no non-standard protein/DNA/RNA residues in this entry.

### 6.3 Carbohydrates [i](#)

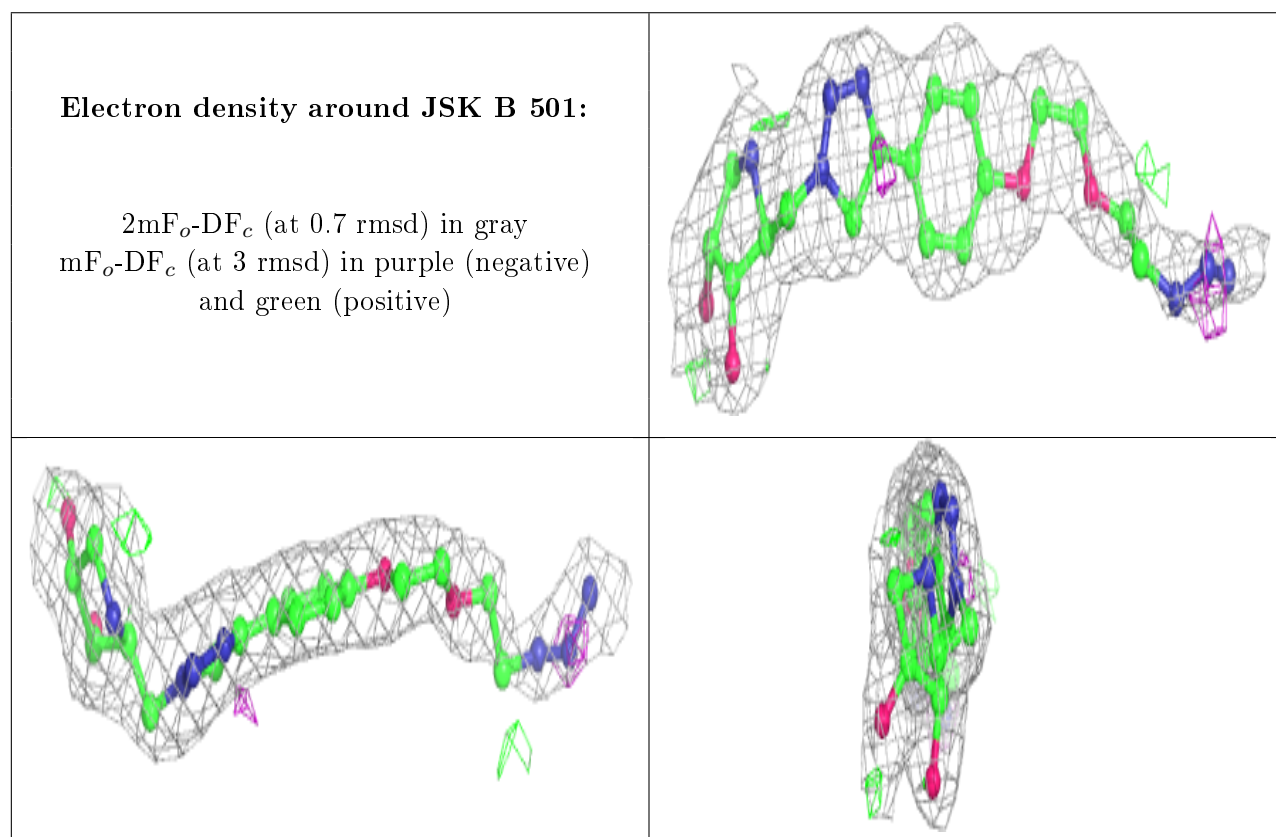
There are no carbohydrates in this entry.

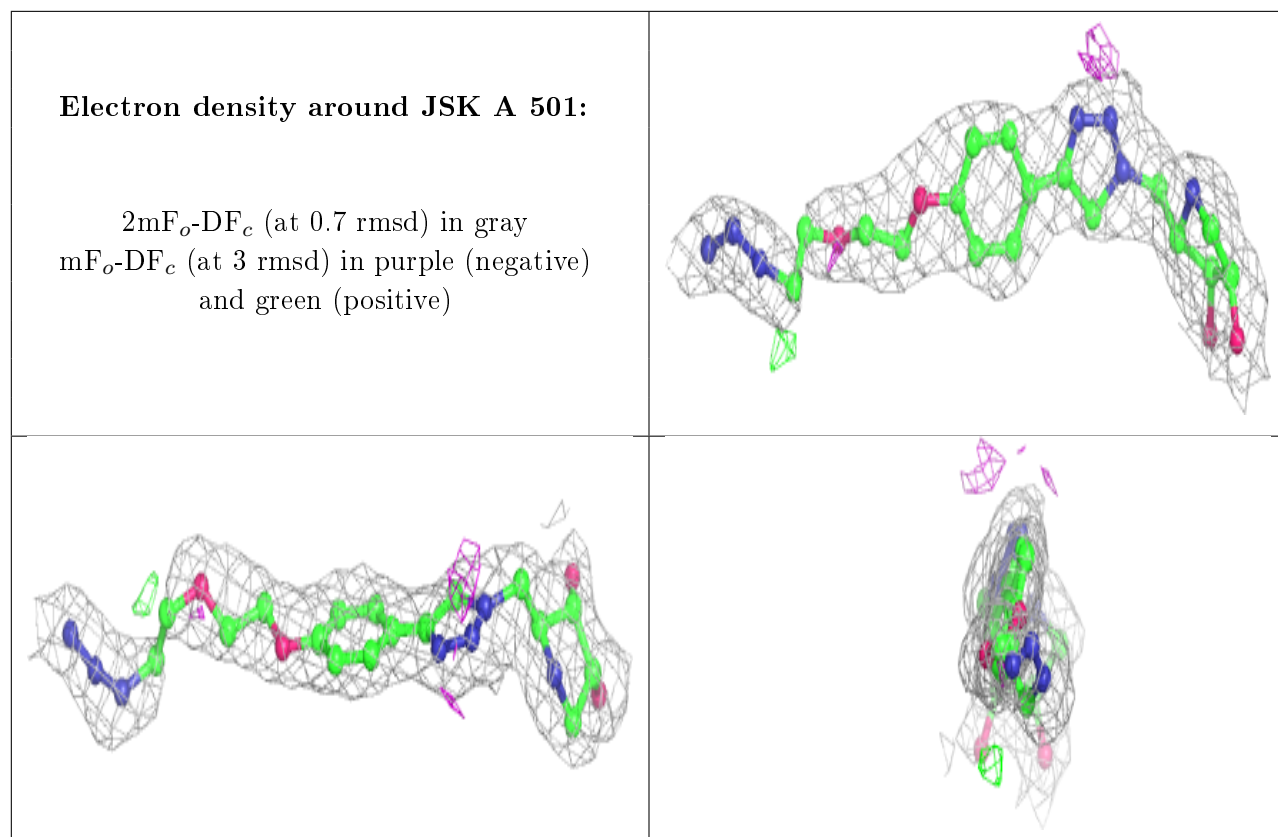
### 6.4 Ligands [i](#)

In the following table, the Atoms column lists the number of modelled atoms in the group and the number defined in the chemical component dictionary. The B-factors column lists the minimum, median, 95<sup>th</sup> percentile and maximum values of B factors of atoms in the group. The column labelled 'Q< 0.9' lists the number of atoms with occupancy less than 0.9.

Mol	Type	Chain	Res	Atoms	RSCC	RSR	B-factors(Å <sup>2</sup> )	Q<0.9
2	JSK	B	501	28/28	0.84	0.18	45,49,56,58	0
2	JSK	A	501	28/28	0.91	0.13	31,37,49,54	0

The following is a graphical depiction of the model fit to experimental electron density of all instances of the Ligand of Interest. In addition, ligands with molecular weight > 250 and outliers as shown on the geometry validation Tables will also be included. Each fit is shown from different orientation to approximate a three-dimensional view.





## 6.5 Other polymers [i](#)

There are no such residues in this entry.