



# Full wwPDB X-ray Structure Validation Report ⓘ

Mar 13, 2018 – 01:06 pm GMT

PDB ID : 2R5O  
Title : Crystal structure of the C-terminal domain of wzt  
Authors : Kimber, M.S.; Cuthbertson, L.; Whitfield, C.  
Deposited on : 2007-09-04  
Resolution : 1.30 Å(reported)

This is a Full wwPDB X-ray Structure Validation Report for a publicly released PDB entry.

We welcome your comments at [validation@mail.wwpdb.org](mailto:validation@mail.wwpdb.org)

A user guide is available at

<https://www.wwpdb.org/validation/2017/XrayValidationReportHelp>

with specific help available everywhere you see the ⓘ symbol.

---

The following versions of software and data (see [references ⓘ](#)) were used in the production of this report:

MolProbity : 4.02b-467  
Mogul : 1.7.3 (157068), CSD as539be (2018)  
Xtriage (Phenix) : 1.13  
EDS : trunk31020  
Percentile statistics : 20171227.v01 (using entries in the PDB archive December 27th 2017)  
Refmac : 5.8.0158  
CCP4 : 7.0 (Gargrove)  
Ideal geometry (proteins) : Engh & Huber (2001)  
Ideal geometry (DNA, RNA) : Parkinson et al. (1996)  
Validation Pipeline (wwPDB-VP) : trunk31020

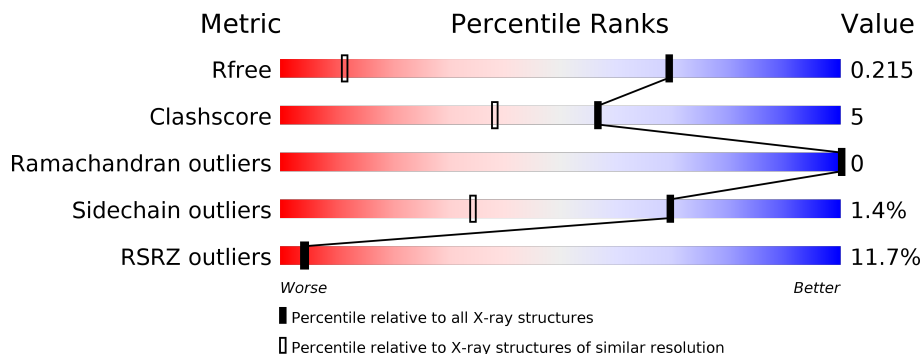
# 1 Overall quality at a glance

The following experimental techniques were used to determine the structure:

*X-RAY DIFFRACTION*

The reported resolution of this entry is 1.30 Å.

Percentile scores (ranging between 0-100) for global validation metrics of the entry are shown in the following graphic. The table shows the number of entries on which the scores are based.



Metric	Whole archive (#Entries)	Similar resolution (#Entries, resolution range(Å))
$R_{free}$	111664	1286 (1.32-1.28)
Clashscore	122126	1332 (1.32-1.28)
Ramachandran outliers	120053	1282 (1.32-1.28)
Sidechain outliers	120020	1282 (1.32-1.28)
RSRZ outliers	108989	1250 (1.32-1.28)

The table below summarises the geometric issues observed across the polymeric chains and their fit to the electron density. The red, orange, yellow and green segments on the lower bar indicate the fraction of residues that contain outliers for  $\geq 3$ , 2, 1 and 0 types of geometric quality criteria. A grey segment represents the fraction of residues that are not modelled. The numeric value for each fraction is indicated below the corresponding segment, with a dot representing fractions  $\leq 5\%$ . The upper red bar (where present) indicates the fraction of residues that have poor fit to the electron density. The numeric value is given above the bar.

Mol	Chain	Length	Quality of chain
1	A	188	 11% 83% 5% • 11%
1	B	188	 10% 76% 12% 12%

## 2 Entry composition

There are 5 unique types of molecules in this entry. The entry contains 3158 atoms, of which 0 are hydrogens and 0 are deuteriums.

In the tables below, the ZeroOcc column contains the number of atoms modelled with zero occupancy, the AltConf column contains the number of residues with at least one atom in alternate conformation and the Trace column contains the number of residues modelled with at most 2 atoms.

- Molecule 1 is a protein called Putative ATP binding component of ABC-transporter.

Mol	Chain	Residues	Atoms					ZeroOcc	AltConf	Trace
			Total	C	N	O	S			
1	A	167	1390	897	217	270	6	0	13	0
1	B	166	1383	894	218	265	6	0	15	0

There are 22 discrepancies between the modelled and reference sequences:

Chain	Residue	Modelled	Actual	Comment	Reference
A	244	MET	-	EXPRESSION TAG	UNP Q47591
A	245	HIS	-	EXPRESSION TAG	UNP Q47591
A	246	HIS	-	EXPRESSION TAG	UNP Q47591
A	247	HIS	-	EXPRESSION TAG	UNP Q47591
A	248	HIS	-	EXPRESSION TAG	UNP Q47591
A	249	HIS	-	EXPRESSION TAG	UNP Q47591
A	250	HIS	-	EXPRESSION TAG	UNP Q47591
A	251	HIS	-	EXPRESSION TAG	UNP Q47591
A	252	HIS	-	EXPRESSION TAG	UNP Q47591
A	253	HIS	-	EXPRESSION TAG	UNP Q47591
A	254	HIS	-	EXPRESSION TAG	UNP Q47591
B	244	MET	-	EXPRESSION TAG	UNP Q47591
B	245	HIS	-	EXPRESSION TAG	UNP Q47591
B	246	HIS	-	EXPRESSION TAG	UNP Q47591
B	247	HIS	-	EXPRESSION TAG	UNP Q47591
B	248	HIS	-	EXPRESSION TAG	UNP Q47591
B	249	HIS	-	EXPRESSION TAG	UNP Q47591
B	250	HIS	-	EXPRESSION TAG	UNP Q47591
B	251	HIS	-	EXPRESSION TAG	UNP Q47591
B	252	HIS	-	EXPRESSION TAG	UNP Q47591
B	253	HIS	-	EXPRESSION TAG	UNP Q47591
B	254	HIS	-	EXPRESSION TAG	UNP Q47591

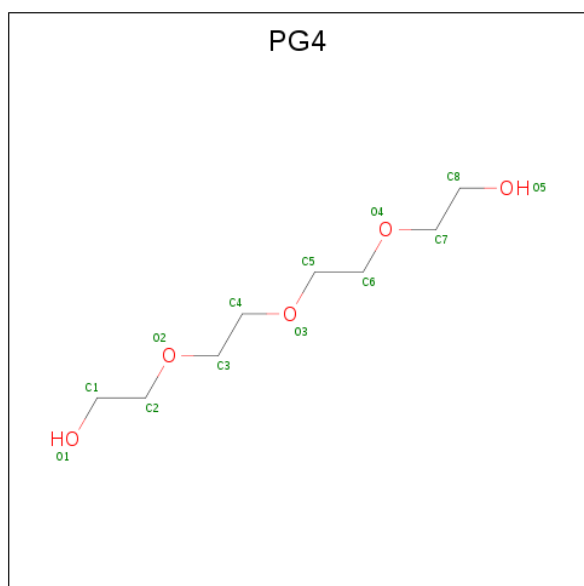
- Molecule 2 is CHLORIDE ION (three-letter code: CL) (formula: Cl).

Mol	Chain	Residues	Atoms	ZeroOcc	AltConf
2	A	3	Total Cl 3 3	0	0

- Molecule 3 is SODIUM ION (three-letter code: NA) (formula: Na).

Mol	Chain	Residues	Atoms	ZeroOcc	AltConf
3	B	3	Total Na 3 3	0	0
3	A	2	Total Na 2 2	0	0

- Molecule 4 is TETRAETHYLENE GLYCOL (three-letter code: PG4) (formula: C<sub>8</sub>H<sub>18</sub>O<sub>5</sub>).



Mol	Chain	Residues	Atoms	ZeroOcc	AltConf
4	A	1	Total C O 13 8 5	0	0

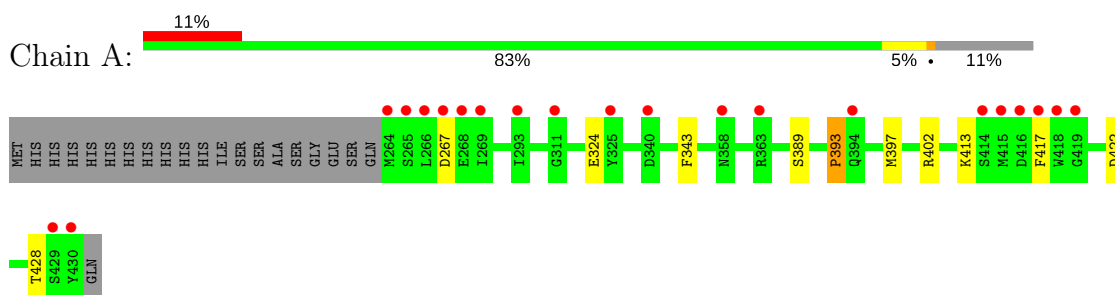
- Molecule 5 is water.

Mol	Chain	Residues	Atoms	ZeroOcc	AltConf
5	A	183	Total O 183 183	0	0
5	B	181	Total O 181 181	0	0

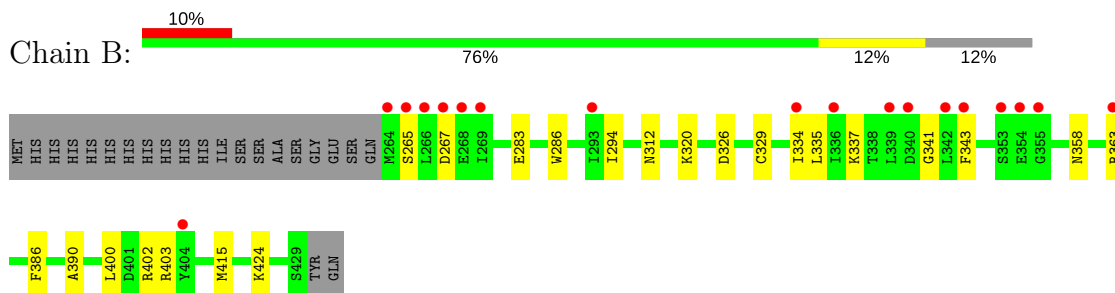
### 3 Residue-property plots [i](#)

These plots are drawn for all protein, RNA and DNA chains in the entry. The first graphic for a chain summarises the proportions of the various outlier classes displayed in the second graphic. The second graphic shows the sequence view annotated by issues in geometry and electron density. Residues are color-coded according to the number of geometric quality criteria for which they contain at least one outlier: green = 0, yellow = 1, orange = 2 and red = 3 or more. A red dot above a residue indicates a poor fit to the electron density ( $RSRZ > 2$ ). Stretches of 2 or more consecutive residues without any outlier are shown as a green connector. Residues present in the sample, but not in the model, are shown in grey.

- Molecule 1: Putative ATP binding component of ABC-transporter



- Molecule 1: Putative ATP binding component of ABC-transporter



## 4 Data and refinement statistics

Property	Value	Source
Space group	P 42 21 2	Depositor
Cell constants a, b, c, $\alpha$ , $\beta$ , $\gamma$	106.08Å 106.08Å 70.35Å 90.00° 90.00° 90.00°	Depositor
Resolution (Å)	20.00 – 1.30 19.95 – 1.30	Depositor EDS
% Data completeness (in resolution range)	98.5 (20.00-1.30) 98.5 (19.95-1.30)	Depositor EDS
$R_{merge}$	0.05	Depositor
$R_{sym}$	0.06	Depositor
$\langle I/\sigma(I) \rangle$ <sup>1</sup>	4.53 (at 1.30Å)	Xtrriage
Refinement program	REFMAC 5.2.0005	Depositor
R, $R_{free}$	0.166 , 0.182 0.201 , 0.215	Depositor DCC
$R_{free}$ test set	4829 reflections (4.98%)	wwPDB-VP
Wilson B-factor (Å <sup>2</sup> )	15.0	Xtrriage
Anisotropy	0.006	Xtrriage
Bulk solvent $k_{sol}$ (e/Å <sup>3</sup> ), $B_{sol}$ (Å <sup>2</sup> )	0.42 , 51.6	EDS
L-test for twinning <sup>2</sup>	$\langle  L  \rangle = 0.51$ , $\langle L^2 \rangle = 0.35$	Xtrriage
Estimated twinning fraction	No twinning to report.	Xtrriage
$F_o, F_c$ correlation	0.96	EDS
Total number of atoms	3158	wwPDB-VP
Average B, all atoms (Å <sup>2</sup> )	18.0	wwPDB-VP

Xtrriage's analysis on translational NCS is as follows: *The largest off-origin peak in the Patterson function is 5.08% of the height of the origin peak. No significant pseudotranslation is detected.*

<sup>1</sup>Intensities estimated from amplitudes.

<sup>2</sup>Theoretical values of  $\langle |L| \rangle$ ,  $\langle L^2 \rangle$  for acentric reflections are 0.5, 0.333 respectively for untwinned datasets, and 0.375, 0.2 for perfectly twinned datasets.

## 5 Model quality [i](#)

### 5.1 Standard geometry [i](#)

Bond lengths and bond angles in the following residue types are not validated in this section: NA, PG4, CL

The Z score for a bond length (or angle) is the number of standard deviations the observed value is removed from the expected value. A bond length (or angle) with  $|Z| > 5$  is considered an outlier worth inspection. RMSZ is the root-mean-square of all Z scores of the bond lengths (or angles).

Mol	Chain	Bond lengths		Bond angles	
		RMSZ	# $ Z  > 5$	RMSZ	# $ Z  > 5$
1	A	0.59	1/1474 (0.1%)	0.78	2/1998 (0.1%)
1	B	0.60	0/1478	0.75	1/2003 (0.0%)
All	All	0.60	1/2952 (0.0%)	0.76	3/4001 (0.1%)

All (1) bond length outliers are listed below:

Mol	Chain	Res	Type	Atoms	Z	Observed(Å)	Ideal(Å)
1	A	267	ASP	CG-OD1	5.24	1.37	1.25

All (3) bond angle outliers are listed below:

Mol	Chain	Res	Type	Atoms	Z	Observed(°)	Ideal(°)
1	B	326	ASP	CB-CG-OD1	5.35	123.12	118.30
1	A	402	ARG	NE-CZ-NH2	-5.17	117.72	120.30
1	A	343	PHE	CB-CG-CD1	-5.12	117.22	120.80

There are no chirality outliers.

There are no planarity outliers.

### 5.2 Too-close contacts [i](#)

In the following table, the Non-H and H(model) columns list the number of non-hydrogen atoms and hydrogen atoms in the chain respectively. The H(added) column lists the number of hydrogen atoms added and optimized by MolProbity. The Clashes column lists the number of clashes within the asymmetric unit, whereas Symm-Clashes lists symmetry related clashes.

Mol	Chain	Non-H	H(model)	H(added)	Clashes	Symm-Clashes
1	A	1390	0	1324	10	0
1	B	1383	0	1331	20	0

*Continued on next page...*

Continued from previous page...

Mol	Chain	Non-H	H(model)	H(added)	Clashes	Symm-Clashes
2	A	3	0	0	0	0
3	A	2	0	0	0	0
3	B	3	0	0	0	0
4	A	13	0	18	0	0
5	A	183	0	0	0	1
5	B	181	0	0	2	1
All	All	3158	0	2673	30	1

The all-atom clashscore is defined as the number of clashes found per 1000 atoms (including hydrogen atoms). The all-atom clashscore for this structure is 5.

All (30) close contacts within the same asymmetric unit are listed below, sorted by their clash magnitude.

Atom-1	Atom-2	Interatomic distance (Å)	Clash overlap (Å)
1:B:335[B]:LEU:HD22	1:B:343[B]:PHE:CZ	1.63	1.33
1:B:424:LYS:NZ	5:B:583:HOH:O	1.71	1.18
1:B:335[B]:LEU:CD2	1:B:343[B]:PHE:HZ	1.67	1.06
1:B:335[B]:LEU:HD22	1:B:343[B]:PHE:HZ	0.79	0.95
1:B:312:ASN:HD21	1:B:415:MET:HG2	1.36	0.91
1:B:312:ASN:ND2	1:B:415:MET:HG2	1.90	0.86
1:B:329[B]:CYS:SG	1:B:358:ASN:ND2	2.55	0.80
1:B:265:SER:OG	1:B:267:ASP:OD1	2.07	0.73
1:A:393:PRO:HA	1:A:397[A]:MET:CG	2.22	0.69
1:B:335[B]:LEU:CD2	1:B:343[B]:PHE:CZ	2.56	0.66
1:A:413:LYS:HE2	1:A:417[B]:PHE:CE2	2.31	0.65
1:B:312:ASN:HD21	1:B:415:MET:CG	2.08	0.65
1:B:415:MET:HB3	5:B:529:HOH:O	1.98	0.64
1:B:312:ASN:ND2	1:B:415:MET:CG	2.63	0.62
1:A:393:PRO:HA	1:A:397[A]:MET:SD	2.41	0.61
1:A:393:PRO:HA	1:A:397[A]:MET:HG3	1.84	0.60
1:B:286:TRP:CZ2	1:B:402:ARG:HD2	2.41	0.56
1:B:329[B]:CYS:SG	1:B:358:ASN:CG	2.87	0.54
1:A:389:SER:HB3	1:A:397[B]:MET:HG2	1.94	0.49
1:B:334[A]:ILE:HG22	1:B:386:PHE:CD1	2.48	0.49
1:B:390:ALA:HB3	1:B:400:LEU:HD11	1.93	0.49
1:A:417[B]:PHE:CZ	1:A:422:ASP:HB2	2.51	0.46
1:A:397[A]:MET:HE3	1:A:397[A]:MET:HB3	1.90	0.43
1:B:337[B]:LYS:HE2	1:B:341:GLY:HA2	2.01	0.42
1:B:283[B]:GLU:OE1	1:B:403:ARG:HB3	2.20	0.41
1:B:294:ILE:CD1	1:B:320:LYS:HE3	2.51	0.40
1:B:337[A]:LYS:HE2	1:B:343[A]:PHE:CE1	2.56	0.40

Continued on next page...



Continued from previous page...

Atom-1	Atom-2	Interatomic distance (Å)	Clash overlap (Å)
1:A:393:PRO:CA	1:A:397[A]:MET:SD	3.08	0.40

All (1) symmetry-related close contacts are listed below. The label for Atom-2 includes the symmetry operator and encoded unit-cell translations to be applied.

Atom-1	Atom-2	Interatomic distance (Å)	Clash overlap (Å)
5:A:473:HOH:O	5:B:482:HOH:O[6_555]	1.99	0.21

## 5.3 Torsion angles [i](#)

### 5.3.1 Protein backbone [i](#)

In the following table, the Percentiles column shows the percent Ramachandran outliers of the chain as a percentile score with respect to all X-ray entries followed by that with respect to entries of similar resolution.

The Analysed column shows the number of residues for which the backbone conformation was analysed, and the total number of residues.

Mol	Chain	Analysed	Favoured	Allowed	Outliers	Percentiles	
1	A	177/188 (94%)	169 (96%)	8 (4%)	0	100	100
1	B	179/188 (95%)	174 (97%)	5 (3%)	0	100	100
All	All	356/376 (95%)	343 (96%)	13 (4%)	0	100	100

There are no Ramachandran outliers to report.

### 5.3.2 Protein sidechains [i](#)

In the following table, the Percentiles column shows the percent sidechain outliers of the chain as a percentile score with respect to all X-ray entries followed by that with respect to entries of similar resolution.

The Analysed column shows the number of residues for which the sidechain conformation was analysed, and the total number of residues.

Mol	Chain	Analysed	Rotameric	Outliers	Percentiles	
1	A	161/167 (96%)	156 (97%)	5 (3%)	43	6
1	B	162/167 (97%)	161 (99%)	1 (1%)	87	65

Continued on next page...

Continued from previous page...

Mol	Chain	Analysed	Rotameric	Outliers	Percentiles
All	All	323/334 (97%)	317 (98%)	6 (2%)	69 20

All (6) residues with a non-rotameric sidechain are listed below:

Mol	Chain	Res	Type
1	A	324[A]	GLU
1	A	324[B]	GLU
1	A	393	PRO
1	A	428[A]	THR
1	A	428[B]	THR
1	B	363	ARG

Some sidechains can be flipped to improve hydrogen bonding and reduce clashes. All (2) such sidechains are listed below:

Mol	Chain	Res	Type
1	B	312	ASN
1	B	358	ASN

### 5.3.3 RNA [i](#)

There are no RNA molecules in this entry.

## 5.4 Non-standard residues in protein, DNA, RNA chains [i](#)

There are no non-standard protein/DNA/RNA residues in this entry.

## 5.5 Carbohydrates [i](#)

There are no carbohydrates in this entry.

## 5.6 Ligand geometry [i](#)

Of 9 ligands modelled in this entry, 8 are monoatomic - leaving 1 for Mogul analysis.

In the following table, the Counts columns list the number of bonds (or angles) for which Mogul statistics could be retrieved, the number of bonds (or angles) that are observed in the model and the number of bonds (or angles) that are defined in the Chemical Component Dictionary. The Link column lists molecule types, if any, to which the group is linked. The Z score for a bond length (or angle) is the number of standard deviations the observed value is removed from the

expected value. A bond length (or angle) with  $|Z| > 2$  is considered an outlier worth inspection. RMSZ is the root-mean-square of all Z scores of the bond lengths (or angles).

Mol	Type	Chain	Res	Link	Bond lengths			Bond angles		
					Counts	RMSZ	$\# Z  > 2$	Counts	RMSZ	$\# Z  > 2$
4	PG4	A	432	-	12,12,12	0.52	0	11,11,11	0.56	0

In the following table, the Chirals column lists the number of chiral outliers, the number of chiral centers analysed, the number of these observed in the model and the number defined in the Chemical Component Dictionary. Similar counts are reported in the Torsion and Rings columns. '-' means no outliers of that kind were identified.

Mol	Type	Chain	Res	Link	Chirals	Torsions	Rings
4	PG4	A	432	-	-	0/10/10/10	0/0/0/0

There are no bond length outliers.

There are no bond angle outliers.

There are no chirality outliers.

There are no torsion outliers.

There are no ring outliers.

No monomer is involved in short contacts.

## 5.7 Other polymers [i](#)

There are no such residues in this entry.

## 5.8 Polymer linkage issues [i](#)

There are no chain breaks in this entry.

## 6 Fit of model and data

### 6.1 Protein, DNA and RNA chains

In the following table, the column labelled ‘#RSRZ> 2’ contains the number (and percentage) of RSRZ outliers, followed by percent RSRZ outliers for the chain as percentile scores relative to all X-ray entries and entries of similar resolution. The OWAB column contains the minimum, median, 95<sup>th</sup> percentile and maximum values of the occupancy-weighted average B-factor per residue. The column labelled ‘Q< 0.9’ lists the number of (and percentage) of residues with an average occupancy less than 0.9.

Mol	Chain	Analysed	<RSRZ>	#RSRZ>2	OWAB(Å <sup>2</sup> )	Q<0.9
1	A	167/188 (88%)	0.94	21 (12%) <b>3</b> <b>3</b>	13, 16, 23, 35	0
1	B	166/188 (88%)	0.75	18 (10%) <b>6</b> <b>5</b>	12, 15, 24, 29	0
All	All	333/376 (88%)	0.85	39 (11%) <b>4</b> <b>4</b>	12, 16, 24, 35	0

All (39) RSRZ outliers are listed below:

Mol	Chain	Res	Type	RSRZ
1	A	418	TRP	13.1
1	A	266	LEU	11.5
1	A	267	ASP	8.7
1	B	267	ASP	6.9
1	B	343[A]	PHE	6.2
1	B	354	GLU	5.4
1	A	265	SER	5.4
1	A	415	MET	5.4
1	A	325	TYR	4.6
1	A	268	GLU	4.6
1	B	268	GLU	4.5
1	B	265	SER	4.5
1	B	340	ASP	4.4
1	B	266	LEU	4.3
1	A	430[A]	TYR	4.3
1	B	355	GLY	4.1
1	A	416	ASP	3.9
1	A	264	MET	3.8
1	B	404[A]	TYR	3.7
1	A	269	ILE	3.7
1	B	269	ILE	3.7
1	A	363	ARG	3.6
1	A	311	GLY	3.6
1	B	339[A]	LEU	3.4

*Continued on next page...*

*Continued from previous page...*

Mol	Chain	Res	Type	RSRZ
1	A	340[A]	ASP	3.2
1	B	342	LEU	2.8
1	A	414	SER	2.8
1	A	293	ILE	2.8
1	B	334[A]	ILE	2.6
1	B	353	SER	2.6
1	B	363	ARG	2.6
1	A	419	GLY	2.5
1	A	417[A]	PHE	2.5
1	A	394	GLN	2.5
1	B	264	MET	2.4
1	A	429	SER	2.2
1	B	293	ILE	2.2
1	A	358	ASN	2.2
1	B	336	ILE	2.1

## 6.2 Non-standard residues in protein, DNA, RNA chains [i](#)

There are no non-standard protein/DNA/RNA residues in this entry.

## 6.3 Carbohydrates [i](#)

There are no carbohydrates in this entry.

## 6.4 Ligands [i](#)

In the following table, the Atoms column lists the number of modelled atoms in the group and the number defined in the chemical component dictionary. The B-factors column lists the minimum, median, 95<sup>th</sup> percentile and maximum values of B factors of atoms in the group. The column labelled 'Q< 0.9' lists the number of atoms with occupancy less than 0.9.

Mol	Type	Chain	Res	Atoms	RSCC	RSR	B-factors(Å <sup>2</sup> )	Q<0.9
4	PG4	A	432	13/13	0.77	0.14	38,39,42,43	0
3	NA	A	11	1/1	0.96	0.06	21,21,21,21	0
3	NA	B	10	1/1	0.97	0.08	23,23,23,23	0
2	CL	A	8	1/1	0.97	0.09	19,19,19,19	0
3	NA	B	12	1/1	0.97	0.11	23,23,23,23	0
3	NA	B	9	1/1	0.99	0.04	18,18,18,18	0
2	CL	A	1	1/1	0.99	0.04	15,15,15,15	0
2	CL	A	2	1/1	0.99	0.03	14,14,14,14	0

*Continued on next page...*

*Continued from previous page...*

Mol	Type	Chain	Res	Atoms	RSCC	RSR	B-factors( $\text{\AA}^2$ )	Q<0.9
3	NA	A	13	1/1	0.99	0.03	17,17,17,17	0

## 6.5 Other polymers [i](#)

There are no such residues in this entry.