



Full wwPDB X-ray Structure Validation Report ⓘ

Feb 10, 2024 – 08:25 AM EST

PDB ID : 2R8O
Title : Transketolase from E. coli in complex with substrate D-xylulose-5-phosphate
Authors : Wille, G.; Asztalos, P.; Weiss, M.S.; Tittmann, K.
Deposited on : 2007-09-11
Resolution : 1.47 Å(reported)

This is a Full wwPDB X-ray Structure Validation Report for a publicly released PDB entry.

We welcome your comments at validation@mail.wwpdb.org

A user guide is available at

<https://www.wwpdb.org/validation/2017/XrayValidationReportHelp>

with specific help available everywhere you see the ⓘ symbol.

The types of validation reports are described at

<http://www.wwpdb.org/validation/2017/FAQs#types>.

The following versions of software and data (see [references ⓘ](#)) were used in the production of this report:

MolProbity : 4.02b-467
Mogul : **FAILED**
Xtrriage (Phenix) : 1.13
EDS : 2.36
buster-report : **FAILED**
Percentile statistics : 20191225.v01 (using entries in the PDB archive December 25th 2019)
Refmac : 5.8.0158
CCP4 : 7.0.044 (Gargrove)
Ideal geometry (proteins) : Engh & Huber (2001)
Ideal geometry (DNA, RNA) : Parkinson et al. (1996)
Validation Pipeline (wwPDB-VP) : 2.36

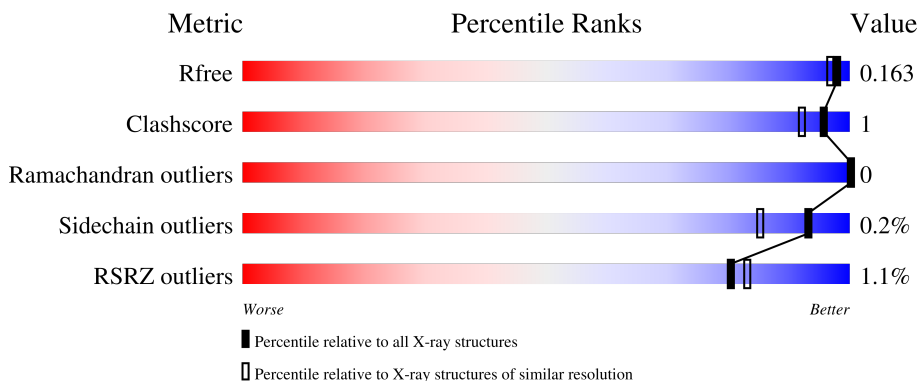
1 Overall quality at a glance

The following experimental techniques were used to determine the structure:

X-RAY DIFFRACTION

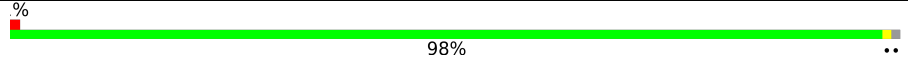
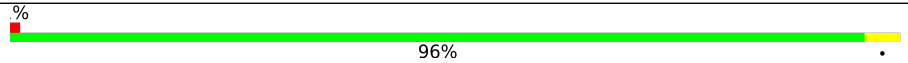
The reported resolution of this entry is 1.47 Å.

Percentile scores (ranging between 0-100) for global validation metrics of the entry are shown in the following graphic. The table shows the number of entries on which the scores are based.



Metric	Whole archive (#Entries)	Similar resolution (#Entries, resolution range(Å))
R_{free}	130704	4690 (1.50-1.46)
Clashscore	141614	4955 (1.50-1.46)
Ramachandran outliers	138981	4846 (1.50-1.46)
Sidechain outliers	138945	4844 (1.50-1.46)
RSRZ outliers	127900	4614 (1.50-1.46)

The table below summarises the geometric issues observed across the polymeric chains and their fit to the electron density. The red, orange, yellow and green segments of the lower bar indicate the fraction of residues that contain outliers for ≥ 3 , 2, 1 and 0 types of geometric quality criteria respectively. A grey segment represents the fraction of residues that are not modelled. The numeric value for each fraction is indicated below the corresponding segment, with a dot representing fractions $\leq 5\%$. The upper red bar (where present) indicates the fraction of residues that have poor fit to the electron density. The numeric value is given above the bar.

Mol	Chain	Length	Quality of chain
1	A	669	 98%
1	B	669	 96%

2 Entry composition i

There are 5 unique types of molecules in this entry. The entry contains 11582 atoms, of which 0 are hydrogens and 0 are deuteriums.

In the tables below, the ZeroOcc column contains the number of atoms modelled with zero occupancy, the AltConf column contains the number of residues with at least one atom in alternate conformation and the Trace column contains the number of residues modelled with at most 2 atoms.

- Molecule 1 is a protein called Transketolase 1.

Mol	Chain	Residues	Atoms					ZeroOcc	AltConf	Trace
			Total	C	N	O	S			
1	A	662	5096	3224	873	972	27	0	5	0
1	B	667	5158	3263	888	979	28	0	7	0

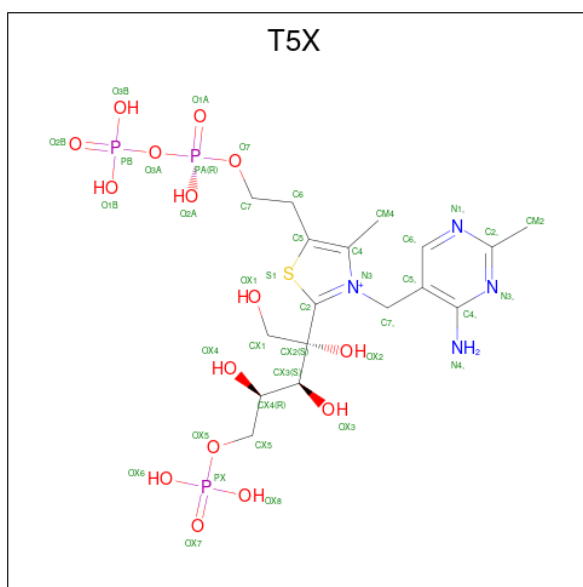
There are 12 discrepancies between the modelled and reference sequences:

Chain	Residue	Modelled	Actual	Comment	Reference
A	664	HIS	-	expression tag	UNP P27302
A	665	HIS	-	expression tag	UNP P27302
A	666	HIS	-	expression tag	UNP P27302
A	667	HIS	-	expression tag	UNP P27302
A	668	HIS	-	expression tag	UNP P27302
A	669	HIS	-	expression tag	UNP P27302
B	664	HIS	-	expression tag	UNP P27302
B	665	HIS	-	expression tag	UNP P27302
B	666	HIS	-	expression tag	UNP P27302
B	667	HIS	-	expression tag	UNP P27302
B	668	HIS	-	expression tag	UNP P27302
B	669	HIS	-	expression tag	UNP P27302

- Molecule 2 is CALCIUM ION (three-letter code: CA) (formula: Ca).

Mol	Chain	Residues	Atoms		ZeroOcc	AltConf
2	A	1	Total	Ca	0	0
			1	1		
2	B	1	Total	Ca	0	0
			1	1		

- Molecule 3 is 2-C-{3-[(4-amino-2-methylpyrimidin-5-yl)methyl]-5-(2-[(R)-hydroxy(phosphonoxy)phosphoryl]oxy)ethyl)-4-methyl-1,3-thiazol-3-ium-2-yl}-5-O-phosphono-D-xylitol (three-letter code: T5X) (formula: C₁₇H₃₀N₄O₁₅P₃S).



Mol	Chain	Residues	Atoms					ZeroOcc	AltConf	
			Total	C	N	O	P			S
3	A	1	Total	C	N	O	P	S	0	0
			40	17	4	15	3	1		
3	B	1	Total	C	N	O	P	S	0	0
			40	17	4	15	3	1		

- Molecule 4 is 1,2-ETHANEDIOL (three-letter code: EDO) (formula: $C_2H_6O_2$).



Mol	Chain	Residues	Atoms		ZeroOcc	AltConf
			Total	C O		
4	A	1	Total	C O	0	0
			4	2 2		
4	B	1	Total	C O	0	0
			4	2 2		

Continued on next page...

Continued from previous page...

Mol	Chain	Residues	Atoms	ZeroOcc	AltConf
4	B	1	Total C O 4 2 2	0	0
4	B	1	Total C O 4 2 2	0	0
4	B	1	Total C O 4 2 2	0	0
4	B	1	Total C O 4 2 2	0	0
4	B	1	Total C O 4 2 2	0	0
4	B	1	Total C O 4 2 2	0	0
4	B	1	Total C O 4 2 2	0	0
4	B	1	Total C O 4 2 2	0	0
4	B	1	Total C O 4 2 2	0	0

- Molecule 5 is water.

Mol	Chain	Residues	Atoms	ZeroOcc	AltConf
5	A	601	Total O 601 601	0	0
5	B	601	Total O 601 601	0	0

3 Residue-property plots [i](#)

These plots are drawn for all protein, RNA, DNA and oligosaccharide chains in the entry. The first graphic for a chain summarises the proportions of the various outlier classes displayed in the second graphic. The second graphic shows the sequence view annotated by issues in geometry and electron density. Residues are color-coded according to the number of geometric quality criteria for which they contain at least one outlier: green = 0, yellow = 1, orange = 2 and red = 3 or more. A red dot above a residue indicates a poor fit to the electron density ($RSRZ > 2$). Stretches of 2 or more consecutive residues without any outlier are shown as a green connector. Residues present in the sample, but not in the model, are shown in grey.

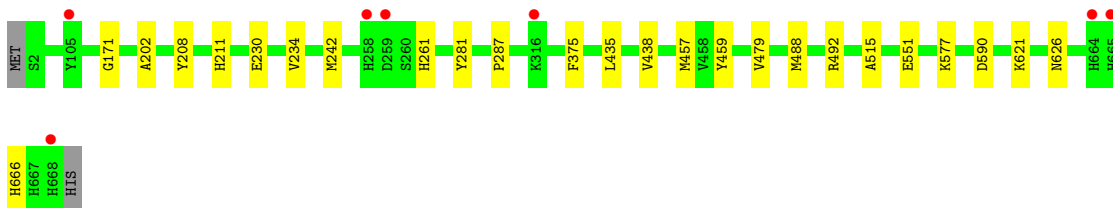
- Molecule 1: Transketolase 1

Chain A: 



- Molecule 1: Transketolase 1

Chain B: 



4 Data and refinement statistics

Property	Value	Source
Space group	P 21 21 21	Depositor
Cell constants a, b, c, α , β , γ	90.14Å 101.95Å 133.26Å 90.00° 90.00° 90.00°	Depositor
Resolution (Å)	27.14 – 1.47 26.99 – 1.47	Depositor EDS
% Data completeness (in resolution range)	99.8 (27.14-1.47) 99.8 (26.99-1.47)	Depositor EDS
R_{merge}	0.07	Depositor
R_{sym}	(Not available)	Depositor
$\langle I/\sigma(I) \rangle$ ¹	8.23 (at 1.47Å)	Xtrriage
Refinement program	REFMAC	Depositor
R, R_{free}	0.150 , 0.164 0.149 , 0.163	Depositor DCC
R_{free} test set	2094 reflections (1.01%)	wwPDB-VP
Wilson B-factor (Å ²)	7.7	Xtrriage
Anisotropy	0.018	Xtrriage
Bulk solvent k_{sol} (e/Å ³), B_{sol} (Å ²)	0.36 , 45.8	EDS
L-test for twinning ²	$\langle L \rangle = 0.49$, $\langle L^2 \rangle = 0.33$	Xtrriage
Estimated twinning fraction	No twinning to report.	Xtrriage
F_o, F_c correlation	0.96	EDS
Total number of atoms	11582	wwPDB-VP
Average B, all atoms (Å ²)	9.0	wwPDB-VP

Xtrriage's analysis on translational NCS is as follows: *The largest off-origin peak in the Patterson function is 3.68% of the height of the origin peak. No significant pseudotranslation is detected.*

¹Intensities estimated from amplitudes.

²Theoretical values of $\langle |L| \rangle$, $\langle L^2 \rangle$ for acentric reflections are 0.5, 0.333 respectively for untwinned datasets, and 0.375, 0.2 for perfectly twinned datasets.

5 Model quality

5.1 Standard geometry

Bond lengths and bond angles in the following residue types are not validated in this section: CA, T5X, EDO

The Z score for a bond length (or angle) is the number of standard deviations the observed value is removed from the expected value. A bond length (or angle) with $|Z| > 5$ is considered an outlier worth inspection. RMSZ is the root-mean-square of all Z scores of the bond lengths (or angles).

Mol	Chain	Bond lengths		Bond angles	
		RMSZ	# Z >5	RMSZ	# Z >5
1	A	0.39	0/5229	0.57	0/7087
1	B	0.40	0/5302	0.58	0/7184
All	All	0.40	0/10531	0.58	0/14271

There are no bond length outliers.

There are no bond angle outliers.

There are no chirality outliers.

There are no planarity outliers.

5.2 Too-close contacts

In the following table, the Non-H and H(model) columns list the number of non-hydrogen atoms and hydrogen atoms in the chain respectively. The H(added) column lists the number of hydrogen atoms added and optimized by MolProbity. The Clashes column lists the number of clashes within the asymmetric unit, whereas Symm-Clashes lists symmetry-related clashes.

Mol	Chain	Non-H	H(model)	H(added)	Clashes	Symm-Clashes
1	A	5096	0	4971	3	0
1	B	5158	0	5023	17	0
2	A	1	0	0	0	0
2	B	1	0	0	0	0
3	A	40	0	25	1	0
3	B	40	0	25	2	0
4	A	4	0	6	0	0
4	B	40	0	60	3	0
5	A	601	0	0	1	0
5	B	601	0	0	1	0
All	All	11582	0	10110	22	0

The all-atom clashscore is defined as the number of clashes found per 1000 atoms (including hydrogen atoms). The all-atom clashscore for this structure is 1.

All (22) close contacts within the same asymmetric unit are listed below, sorted by their clash magnitude.

Atom-1	Atom-2	Interatomic distance (Å)	Clash overlap (Å)
1:B:479:VAL:HG21	4:B:680:EDO:H12	1.73	0.71
1:B:488:MET:HE1	1:B:515:ALA:HB2	1.86	0.58
1:B:626:ASN:O	1:B:666:HIS:HE1	1.87	0.57
1:B:488:MET:CE	1:B:515:ALA:HB2	2.36	0.56
1:B:551:GLU:HG3	1:B:577:LYS:HB2	1.91	0.53
1:B:211:HIS:HE1	1:B:230:GLU:OE2	1.94	0.50
1:B:479:VAL:HG21	4:B:680:EDO:C1	2.41	0.49
1:B:261:HIS:ND1	3:B:671:T5X:O1B	2.46	0.47
3:B:671:T5X:H7,1	3:B:671:T5X:OX2	2.15	0.47
1:B:626:ASN:O	1:B:666:HIS:CE1	2.70	0.45
1:B:590:ASP:OD2	1:B:621:LYS:NZ	2.46	0.44
1:B:171:GLY:HA3	1:B:208:TYR:O	2.18	0.44
1:B:234:VAL:O	5:B:1005:HOH:O	2.21	0.44
3:A:671:T5X:H7,1	3:A:671:T5X:OX2	2.18	0.43
1:A:50:GLN:NE2	5:A:1232:HOH:O	2.51	0.43
1:B:281:TYR:CZ	1:B:287:PRO:HG3	2.54	0.43
1:B:457[B]:MET:HB3	1:B:459:TYR:CZ	2.55	0.42
1:B:492:ARG:HE	4:B:680:EDO:H11	1.84	0.42
1:A:171:GLY:HA3	1:A:208:TYR:O	2.19	0.42
1:B:435:LEU:O	1:B:438:VAL:HG12	2.20	0.41
1:B:202:ALA:HB2	1:B:242[B]:MET:SD	2.61	0.41
1:A:326:THR:HG22	1:A:330:LYS:HE2	2.03	0.41

There are no symmetry-related clashes.

5.3 Torsion angles

5.3.1 Protein backbone

In the following table, the Percentiles column shows the percent Ramachandran outliers of the chain as a percentile score with respect to all X-ray entries followed by that with respect to entries of similar resolution.

The Analysed column shows the number of residues for which the backbone conformation was analysed, and the total number of residues.

Mol	Chain	Analysed	Favoured	Allowed	Outliers	Percentiles	
1	A	665/669 (99%)	655 (98%)	10 (2%)	0	100	100
1	B	672/669 (100%)	662 (98%)	10 (2%)	0	100	100
All	All	1337/1338 (100%)	1317 (98%)	20 (2%)	0	100	100

There are no Ramachandran outliers to report.

5.3.2 Protein sidechains [i](#)

In the following table, the Percentiles column shows the percent sidechain outliers of the chain as a percentile score with respect to all X-ray entries followed by that with respect to entries of similar resolution.

The Analysed column shows the number of residues for which the sidechain conformation was analysed, and the total number of residues.

Mol	Chain	Analysed	Rotameric	Outliers	Percentiles	
1	A	520/522 (100%)	519 (100%)	1 (0%)	93	85
1	B	527/522 (101%)	526 (100%)	1 (0%)	93	85
All	All	1047/1044 (100%)	1045 (100%)	2 (0%)	93	85

All (2) residues with a non-rotameric sidechain are listed below:

Mol	Chain	Res	Type
1	A	375	PHE
1	B	375	PHE

Sometimes sidechains can be flipped to improve hydrogen bonding and reduce clashes. All (6) such sidechains are listed below:

Mol	Chain	Res	Type
1	A	50	GLN
1	A	211	HIS
1	B	211	HIS
1	B	453	GLN
1	B	510	GLN
1	B	666	HIS

5.3.3 RNA [i](#)

There are no RNA molecules in this entry.

5.4 Non-standard residues in protein, DNA, RNA chains [i](#)

Mogul failed to run properly - this section is therefore empty.

5.5 Carbohydrates [i](#)

Mogul failed to run properly - this section is therefore empty.

5.6 Ligand geometry [i](#)

Mogul failed to run properly - this section is therefore empty.

5.7 Other polymers [i](#)

Mogul failed to run properly - this section is therefore empty.

5.8 Polymer linkage issues [i](#)

There are no chain breaks in this entry.

6 Fit of model and data [i](#)

6.1 Protein, DNA and RNA chains [i](#)

In the following table, the column labelled ‘#RSRZ > 2’ contains the number (and percentage) of RSRZ outliers, followed by percent RSRZ outliers for the chain as percentile scores relative to all X-ray entries and entries of similar resolution. The OWAB column contains the minimum, median, 95th percentile and maximum values of the occupancy-weighted average B-factor per residue. The column labelled ‘Q < 0.9’ lists the number of (and percentage) of residues with an average occupancy less than 0.9.

Mol	Chain	Analysed	<RSRZ>	#RSRZ>2	OWAB(Å ²)	Q<0.9
1	A	662/669 (98%)	-0.32	7 (1%) 80 83	3, 7, 14, 21	0
1	B	667/669 (99%)	-0.29	7 (1%) 82 84	3, 7, 14, 28	0
All	All	1329/1338 (99%)	-0.30	14 (1%) 80 83	3, 7, 14, 28	0

All (14) RSRZ outliers are listed below:

Mol	Chain	Res	Type	RSRZ
1	B	105	TYR	10.2
1	A	105	TYR	9.6
1	B	668	HIS	5.6
1	B	665	HIS	3.9
1	B	259	ASP	3.4
1	B	258	HIS	3.4
1	A	258	HIS	3.3
1	A	510	GLN	2.8
1	B	664	HIS	2.4
1	A	320	GLN	2.4
1	A	336	ASP	2.2
1	A	662	LEU	2.2
1	A	316	LYS	2.1
1	B	316	LYS	2.1

6.2 Non-standard residues in protein, DNA, RNA chains [i](#)

There are no non-standard protein/DNA/RNA residues in this entry.

6.3 Carbohydrates [i](#)

There are no monosaccharides in this entry.

6.4 Ligands [i](#)

In the following table, the Atoms column lists the number of modelled atoms in the group and the number defined in the chemical component dictionary. The B-factors column lists the minimum, median, 95th percentile and maximum values of B factors of atoms in the group. The column labelled 'Q< 0.9' lists the number of atoms with occupancy less than 0.9.

Mol	Type	Chain	Res	Atoms	RSCC	RSR	B-factors(Å ²)	Q<0.9
4	EDO	B	677	4/4	0.74	0.14	27,28,28,29	0
4	EDO	B	680	4/4	0.82	0.36	22,24,24,25	0
4	EDO	B	676	4/4	0.84	0.18	9,10,12,14	0
4	EDO	B	679	4/4	0.85	0.19	16,16,17,18	0
4	EDO	A	672	4/4	0.86	0.14	21,22,23,24	0
4	EDO	B	678	4/4	0.88	0.17	13,16,18,20	0
4	EDO	B	681	4/4	0.90	0.13	22,23,24,24	0
3	T5X	A	671	40/40	0.96	0.09	4,9,12,14	0
4	EDO	B	672	4/4	0.96	0.10	15,16,16,18	0
4	EDO	B	673	4/4	0.96	0.09	7,9,12,12	0
4	EDO	B	675	4/4	0.96	0.09	10,12,12,13	0
3	T5X	B	671	40/40	0.96	0.09	4,10,13,14	0
4	EDO	B	674	4/4	0.97	0.06	10,12,12,15	0
2	CA	B	670	1/1	1.00	0.02	5,5,5,5	0
2	CA	A	670	1/1	1.00	0.03	4,4,4,4	0

6.5 Other polymers [i](#)

There are no such residues in this entry.