



Full wwPDB X-ray Structure Validation Report ⓘ

Sep 3, 2023 – 04:51 AM EDT

PDB ID : 3R8I
Title : Crystal Structure of PPARgamma with an achiral ureidofibrate derivative (RT86)
Authors : Pochetti, G.; Montanari, R.; Loiodice, F.; Laghezza, A.; Fracchiolla, G.; Lavecchia, A.; Novellino, E.; Crestani, M.
Deposited on : 2011-03-24
Resolution : 2.30 Å(reported)

This is a Full wwPDB X-ray Structure Validation Report for a publicly released PDB entry.

We welcome your comments at validation@mail.wwpdb.org

A user guide is available at

<https://www.wwpdb.org/validation/2017/XrayValidationReportHelp>

with specific help available everywhere you see the ⓘ symbol.

The types of validation reports are described at

<http://www.wwpdb.org/validation/2017/FAQs#types>.

The following versions of software and data (see [references ⓘ](#)) were used in the production of this report:

MolProbity : 4.02b-467
Mogul : 1.8.5 (274361), CSD as541be (2020)
Xtriage (Phenix) : 1.13
EDS : 2.35
buster-report : 1.1.7 (2018)
Percentile statistics : 20191225.v01 (using entries in the PDB archive December 25th 2019)
Refmac : 5.8.0158
CCP4 : 7.0.044 (Gargrove)
Ideal geometry (proteins) : Engh & Huber (2001)
Ideal geometry (DNA, RNA) : Parkinson et al. (1996)
Validation Pipeline (wwPDB-VP) : 2.35

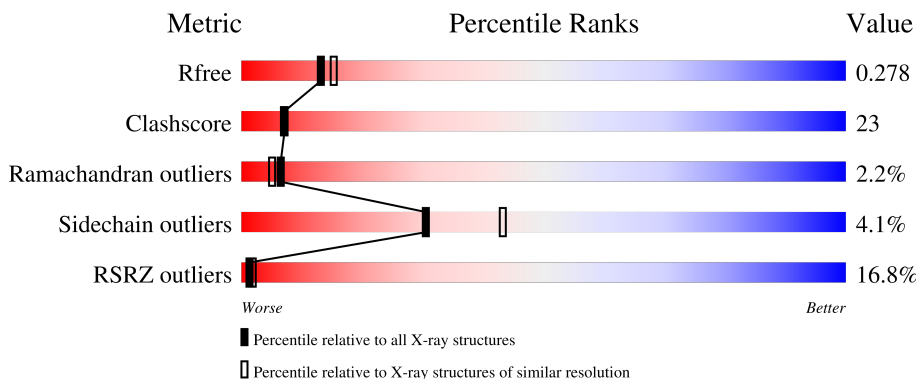
1 Overall quality at a glance

The following experimental techniques were used to determine the structure:

X-RAY DIFFRACTION

The reported resolution of this entry is 2.30 Å.

Percentile scores (ranging between 0-100) for global validation metrics of the entry are shown in the following graphic. The table shows the number of entries on which the scores are based.



Metric	Whole archive (#Entries)	Similar resolution (#Entries, resolution range(Å))
R_{free}	130704	5042 (2.30-2.30)
Clashscore	141614	5643 (2.30-2.30)
Ramachandran outliers	138981	5575 (2.30-2.30)
Sidechain outliers	138945	5575 (2.30-2.30)
RSRZ outliers	127900	4938 (2.30-2.30)

The table below summarises the geometric issues observed across the polymeric chains and their fit to the electron density. The red, orange, yellow and green segments of the lower bar indicate the fraction of residues that contain outliers for ≥ 3 , 2, 1 and 0 types of geometric quality criteria respectively. A grey segment represents the fraction of residues that are not modelled. The numeric value for each fraction is indicated below the corresponding segment, with a dot representing fractions $\leq 5\%$. The upper red bar (where present) indicates the fraction of residues that have poor fit to the electron density. The numeric value is given above the bar.

Mol	Chain	Length	Quality of chain
1	A	287	
1	B	287	

The following table lists non-polymeric compounds, carbohydrate monomers and non-standard residues in protein, DNA, RNA chains that are outliers for geometric or electron-density-fit criteria:

Mol	Type	Chain	Res	Chirality	Geometry	Clashes	Electron density
2	XCX	A	1	-	-	X	-

2 Entry composition

There are 3 unique types of molecules in this entry. The entry contains 4507 atoms, of which 0 are hydrogens and 0 are deuteriums.

In the tables below, the ZeroOcc column contains the number of atoms modelled with zero occupancy, the AltConf column contains the number of residues with at least one atom in alternate conformation and the Trace column contains the number of residues modelled with at most 2 atoms.

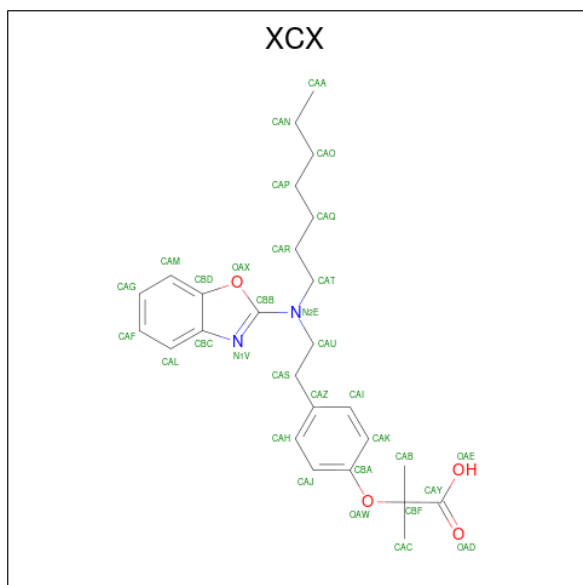
- Molecule 1 is a protein called Peroxisome proliferator-activated receptor gamma.

Mol	Chain	Residues	Atoms					ZeroOcc	AltConf	Trace
			Total	C	N	O	S			
1	A	270	2165	1397	354	404	10	0	0	0
1	B	270	2165	1397	354	404	10	183	0	0

There are 8 discrepancies between the modelled and reference sequences:

Chain	Residue	Modelled	Actual	Comment	Reference
A	191	GLY	-	expression tag	UNP P37231
A	192	SER	-	expression tag	UNP P37231
A	193	HIS	-	expression tag	UNP P37231
A	194	MET	-	expression tag	UNP P37231
B	191	GLY	-	expression tag	UNP P37231
B	192	SER	-	expression tag	UNP P37231
B	193	HIS	-	expression tag	UNP P37231
B	194	MET	-	expression tag	UNP P37231

- Molecule 2 is 2-(4-{2-[1,3-benzoxazol-2-yl(heptyl)amino]ethyl}phenoxy)-2-methylpropanoic acid (three-letter code: XCX) (formula: C₂₆H₃₄N₂O₄).



Mol	Chain	Residues	Atoms				ZeroOcc	AltConf
			Total	C	N	O		
2	A	1	32	26	2	4	0	0

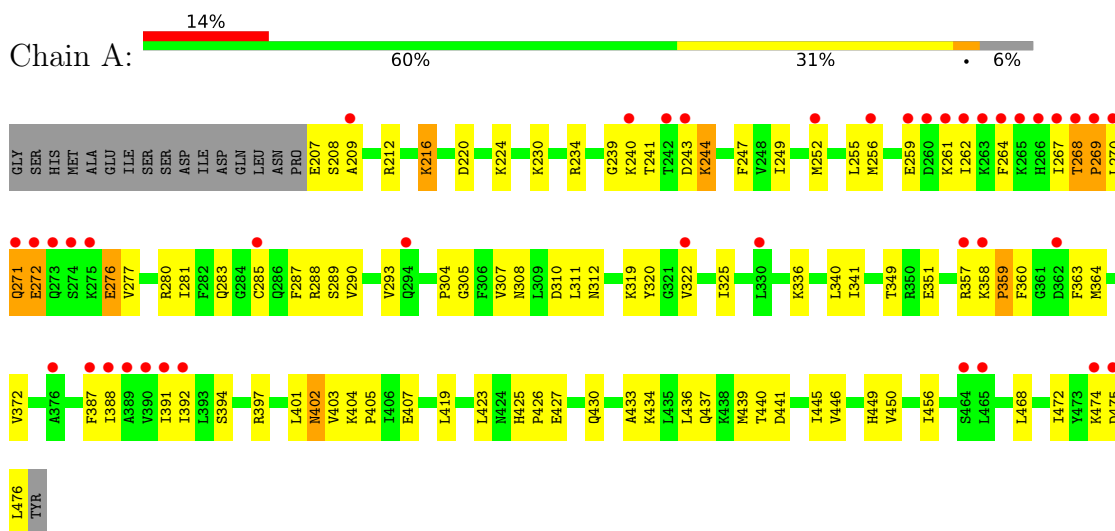
- Molecule 3 is water.

Mol	Chain	Residues	Atoms		ZeroOcc	AltConf
3	A	66	Total	O	0	0
			66	66		
3	B	79	Total	O	0	0
			79	79		

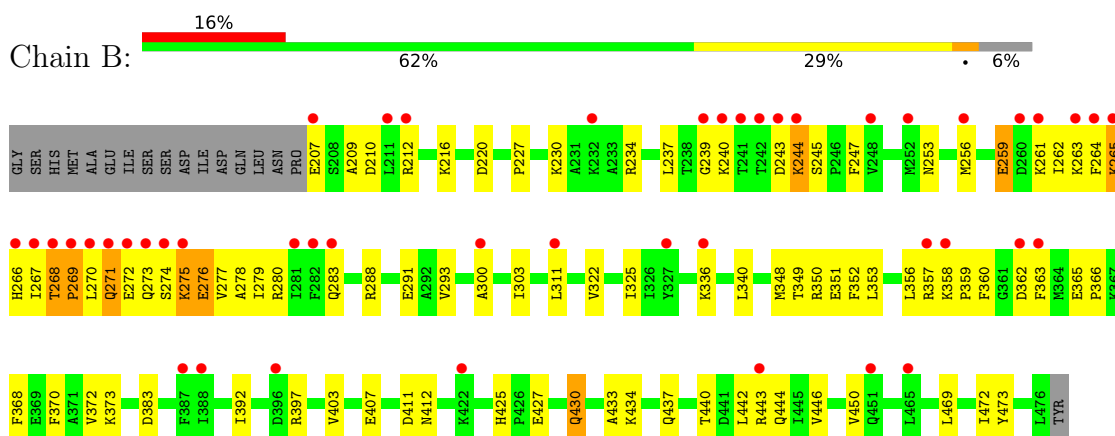
3 Residue-property plots

These plots are drawn for all protein, RNA, DNA and oligosaccharide chains in the entry. The first graphic for a chain summarises the proportions of the various outlier classes displayed in the second graphic. The second graphic shows the sequence view annotated by issues in geometry and electron density. Residues are color-coded according to the number of geometric quality criteria for which they contain at least one outlier: green = 0, yellow = 1, orange = 2 and red = 3 or more. A red dot above a residue indicates a poor fit to the electron density ($RSRZ > 2$). Stretches of 2 or more consecutive residues without any outlier are shown as a green connector. Residues present in the sample, but not in the model, are shown in grey.

- Molecule 1: Peroxisome proliferator-activated receptor gamma



- Molecule 1: Peroxisome proliferator-activated receptor gamma



4 Data and refinement statistics

Property	Value	Source
Space group	C 1 2 1	Depositor
Cell constants a, b, c, α , β , γ	93.59Å 62.40Å 118.39Å 90.00° 102.11° 90.00°	Depositor
Resolution (Å)	10.00 – 2.30 24.65 – 2.30	Depositor EDS
% Data completeness (in resolution range)	(Not available) (10.00-2.30) 99.8 (24.65-2.30)	Depositor EDS
R_{merge}	0.06	Depositor
R_{sym}	(Not available)	Depositor
$\langle I/\sigma(I) \rangle$ ¹	3.52 (at 2.31Å)	Xtrriage
Refinement program	CNS	Depositor
R, R_{free}	0.252 , 0.285 0.244 , 0.278	Depositor DCC
R_{free} test set	1472 reflections (4.94%)	wwPDB-VP
Wilson B-factor (Å ²)	45.1	Xtrriage
Anisotropy	0.690	Xtrriage
Bulk solvent k_{sol} (e/Å ³), B_{sol} (Å ²)	0.38 , 62.0	EDS
L-test for twinning ²	$\langle L \rangle = 0.48$, $\langle L^2 \rangle = 0.30$	Xtrriage
Estimated twinning fraction	No twinning to report.	Xtrriage
F_o, F_c correlation	0.93	EDS
Total number of atoms	4507	wwPDB-VP
Average B, all atoms (Å ²)	60.0	wwPDB-VP

Xtrriage's analysis on translational NCS is as follows: *The largest off-origin peak in the Patterson function is 5.61% of the height of the origin peak. No significant pseudotranslation is detected.*

¹Intensities estimated from amplitudes.

²Theoretical values of $\langle |L| \rangle$, $\langle L^2 \rangle$ for acentric reflections are 0.5, 0.333 respectively for untwinned datasets, and 0.375, 0.2 for perfectly twinned datasets.

5 Model quality [i](#)

5.1 Standard geometry [i](#)

Bond lengths and bond angles in the following residue types are not validated in this section: XCX

The Z score for a bond length (or angle) is the number of standard deviations the observed value is removed from the expected value. A bond length (or angle) with $|Z| > 5$ is considered an outlier worth inspection. RMSZ is the root-mean-square of all Z scores of the bond lengths (or angles).

Mol	Chain	Bond lengths		Bond angles	
		RMSZ	# Z >5	RMSZ	# Z >5
1	A	0.39	0/2202	0.59	0/2967
1	B	0.36	0/2202	0.56	0/2967
All	All	0.38	0/4404	0.58	0/5934

There are no bond length outliers.

There are no bond angle outliers.

There are no chirality outliers.

There are no planarity outliers.

5.2 Too-close contacts [i](#)

In the following table, the Non-H and H(model) columns list the number of non-hydrogen atoms and hydrogen atoms in the chain respectively. The H(added) column lists the number of hydrogen atoms added and optimized by MolProbity. The Clashes column lists the number of clashes within the asymmetric unit, whereas Symm-Clashes lists symmetry-related clashes.

Mol	Chain	Non-H	H(model)	H(added)	Clashes	Symm-Clashes
1	A	2165	0	2232	107	0
1	B	2165	0	2232	84	0
2	A	32	0	33	23	0
3	A	66	0	0	7	0
3	B	79	0	0	9	0
All	All	4507	0	4497	193	0

The all-atom clashscore is defined as the number of clashes found per 1000 atoms (including hydrogen atoms). The all-atom clashscore for this structure is 23.

All (193) close contacts within the same asymmetric unit are listed below, sorted by their clash magnitude.

Atom-1	Atom-2	Interatomic distance (Å)	Clash overlap (Å)
1:A:288:ARG:HG2	2:A:1:XCX:HAP	1.43	0.99
1:A:259:GLU:HG3	1:A:264:PHE:HB2	1.51	0.93
1:A:289:SER:OG	2:A:1:XCX:HAC	1.71	0.90
1:A:357:ARG:HG2	1:A:359:PRO:HD2	1.53	0.90
1:A:271:GLN:HE21	1:A:276:GLU:HA	1.35	0.90
1:A:437:GLN:O	1:A:440:THR:HG22	1.73	0.89
1:A:290:VAL:HB	3:A:8:HOH:O	1.79	0.83
1:A:281:ILE:HG23	2:A:1:XCX:HAL	1.60	0.83
1:A:401:LEU:C	1:A:402:ASN:HD22	1.87	0.78
1:B:267:ILE:HG21	3:B:98:HOH:O	1.85	0.77
1:B:336:LYS:HE2	1:B:372:VAL:HG11	1.66	0.77
1:B:267:ILE:HD12	1:B:275:LYS:HB3	1.66	0.76
1:A:341:ILE:HG22	2:A:1:XCX:HAR	1.68	0.75
1:A:449:HIS:HE1	2:A:1:XCX:HAB	1.52	0.75
1:B:268:THR:H	1:B:269:PRO:HD2	1.53	0.73
1:A:288:ARG:NE	2:A:1:XCX:HAOA	2.03	0.73
1:A:402:ASN:HD22	1:A:402:ASN:N	1.87	0.72
1:A:271:GLN:HG2	1:A:277:VAL:HB	1.70	0.72
1:A:349:THR:HG22	1:A:351:GLU:H	1.53	0.72
1:B:243:ASP:OD2	1:B:244:LYS:HD2	1.90	0.72
1:A:325:ILE:HD11	1:A:392:ILE:HG12	1.71	0.71
1:B:259:GLU:HG3	1:B:264:PHE:HB2	1.73	0.71
1:A:293:VAL:HG11	1:A:468:LEU:HD11	1.73	0.71
1:A:261:LYS:HB3	1:A:262:ILE:HD12	1.72	0.70
1:A:304:PRO:HB2	3:A:94:HOH:O	1.92	0.69
1:B:370:PHE:HA	1:B:373:LYS:HE2	1.73	0.69
1:A:267:ILE:HB	1:A:280:ARG:HH11	1.58	0.69
1:A:441:ASP:O	1:A:445:ILE:HG12	1.92	0.69
1:A:449:HIS:CE1	2:A:1:XCX:HAB	2.27	0.69
1:B:437:GLN:O	1:B:440:THR:HG22	1.94	0.68
1:B:359:PRO:HG2	1:B:360:PHE:CD1	2.28	0.68
1:B:397:ARG:HH11	1:B:443:ARG:HH21	1.42	0.68
1:B:230:LYS:O	1:B:234:ARG:HG2	1.94	0.68
2:A:1:XCX:HAPA	3:A:15:HOH:O	1.93	0.67
1:A:336:LYS:HE2	1:A:372:VAL:HG11	1.77	0.67
1:B:207:GLU:HG3	1:B:209:ALA:H	1.59	0.67
1:B:256:MET:O	1:B:268:THR:HG23	1.95	0.66
1:A:271:GLN:NE2	1:A:276:GLU:HA	2.09	0.66
1:A:270:LEU:HD13	1:A:271:GLN:N	2.11	0.65
1:A:364:MET:SD	2:A:1:XCX:HAH	2.36	0.65
1:B:271:GLN:HE21	1:B:276:GLU:HA	1.61	0.65
3:A:38:HOH:O	1:B:434:LYS:HG2	1.96	0.65

Continued on next page...

Continued from previous page...

Atom-1	Atom-2	Interatomic distance (Å)	Clash overlap (Å)
1:B:349:THR:HG23	3:B:12:HOH:O	1.97	0.64
1:B:259:GLU:HA	1:B:262:ILE:O	1.97	0.64
1:A:267:ILE:HB	1:A:280:ARG:NH1	2.13	0.63
1:A:281:ILE:CG2	2:A:1:XCX:HAL	2.28	0.63
1:A:268:THR:H	1:A:269:PRO:HD2	1.64	0.62
3:A:38:HOH:O	1:B:430:GLN:HB3	1.99	0.62
1:A:285:CYS:SG	2:A:1:XCX:HAU	2.40	0.61
1:B:311:LEU:HB3	3:B:57:HOH:O	2.00	0.61
1:A:474:LYS:C	1:A:476:LEU:H	2.02	0.61
1:A:341:ILE:HG22	2:A:1:XCX:CAR	2.31	0.61
1:B:270:LEU:HD13	1:B:271:GLN:N	2.16	0.60
1:B:288:ARG:HH11	1:B:291:GLU:HB3	1.64	0.60
1:A:305:GLY:HA2	1:A:308:ASN:HD22	1.66	0.60
1:B:444:GLN:HG2	3:B:124:HOH:O	2.01	0.60
1:A:289:SER:OG	2:A:1:XCX:HAK	2.02	0.59
2:A:1:XCX:HAR	2:A:1:XCX:OAX	2.01	0.59
1:A:262:ILE:HD12	1:A:262:ILE:N	2.17	0.59
1:B:267:ILE:HB	1:B:280:ARG:NH1	2.18	0.59
1:A:394:SER:O	1:A:397:ARG:HG2	2.02	0.59
1:B:270:LEU:CD1	1:B:273:GLN:H	2.15	0.58
1:A:359:PRO:HB2	1:A:456:ILE:HD11	1.85	0.58
1:A:212:ARG:O	1:A:216:LYS:HD3	2.03	0.58
1:A:259:GLU:HA	1:A:264:PHE:HD2	1.69	0.58
1:B:237:LEU:HD21	1:B:340:LEU:HG	1.86	0.58
1:A:208:SER:O	1:A:212:ARG:HG2	2.03	0.57
1:A:267:ILE:H	1:A:280:ARG:HD2	1.69	0.57
1:B:279:ILE:O	1:B:283:GLN:HG3	2.05	0.57
1:A:474:LYS:C	1:A:476:LEU:N	2.59	0.57
1:B:271:GLN:HG2	1:B:277:VAL:HB	1.86	0.56
1:B:267:ILE:HB	1:B:280:ARG:CZ	2.36	0.56
1:B:358:LYS:HB2	1:B:359:PRO:HD3	1.87	0.56
1:A:402:ASN:N	1:A:402:ASN:ND2	2.53	0.56
1:B:325:ILE:HD11	1:B:392:ILE:HG12	1.88	0.56
1:A:325:ILE:HD11	1:A:392:ILE:CG1	2.36	0.55
1:B:368:PHE:O	1:B:372:VAL:HG23	2.06	0.55
1:B:259:GLU:CG	1:B:264:PHE:HB2	2.36	0.55
1:B:349:THR:HG22	1:B:351:GLU:H	1.72	0.54
1:A:433:ALA:O	1:A:437:GLN:HG3	2.08	0.54
1:A:239:GLY:HA2	1:A:241:THR:HG22	1.90	0.53
1:A:271:GLN:NE2	1:A:272:GLU:N	2.56	0.53
1:A:349:THR:HG21	3:A:67:HOH:O	2.08	0.53

Continued on next page...

Continued from previous page...

Atom-1	Atom-2	Interatomic distance (Å)	Clash overlap (Å)
1:A:358:LYS:HB2	1:A:359:PRO:HD3	1.90	0.53
1:A:281:ILE:HG23	2:A:1:XCX:CAL	2.37	0.53
1:B:277:VAL:HG13	1:B:278:ALA:N	2.23	0.53
1:B:245:SER:HB3	3:B:143:HOH:O	2.10	0.52
1:B:349:THR:HG22	1:B:351:GLU:N	2.23	0.52
1:B:267:ILE:HG22	1:B:268:THR:N	2.25	0.52
1:B:349:THR:HG22	1:B:352:PHE:H	1.74	0.52
1:B:265:LYS:H	1:B:265:LYS:HZ3	1.58	0.52
1:B:365:GLU:N	1:B:366:PRO:HD2	2.25	0.52
1:B:240:LYS:HG2	1:B:240:LYS:O	2.09	0.52
1:B:442:LEU:O	1:B:446:VAL:HG23	2.08	0.52
1:A:271:GLN:HB2	1:A:277:VAL:N	2.25	0.52
1:B:262:ILE:HG22	1:B:263:LYS:N	2.24	0.52
1:A:450:VAL:HG11	1:A:475:ASP:HA	1.92	0.51
1:B:311:LEU:HD22	3:B:57:HOH:O	2.08	0.51
1:B:244:LYS:N	1:B:244:LYS:HD3	2.26	0.51
1:A:293:VAL:HG22	1:A:322:VAL:HG11	1.92	0.51
1:B:288:ARG:NH1	1:B:291:GLU:HB3	2.26	0.51
1:A:288:ARG:HG2	2:A:1:XCX:CAP	2.28	0.51
1:B:265:LYS:HZ2	1:B:265:LYS:HB3	1.76	0.50
1:B:271:GLN:NE2	1:B:272:GLU:N	2.59	0.50
1:B:353:LEU:O	1:B:356:LEU:HG	2.12	0.50
1:A:247:PHE:HB3	1:A:262:ILE:HD11	1.93	0.49
1:A:472:ILE:C	1:A:472:ILE:HD12	2.32	0.49
1:B:268:THR:N	1:B:269:PRO:HD2	2.24	0.49
1:A:276:GLU:OE2	1:A:357:ARG:NH2	2.45	0.49
1:B:279:ILE:HD11	1:B:357:ARG:NH2	2.27	0.49
1:A:340:LEU:O	2:A:1:XCX:HAQ	2.13	0.48
1:B:270:LEU:HD11	1:B:272:GLU:HB2	1.96	0.48
1:A:468:LEU:O	1:A:472:ILE:HG23	2.13	0.48
1:B:433:ALA:O	1:B:437:GLN:HG3	2.14	0.48
1:B:325:ILE:HD11	1:B:392:ILE:CG1	2.44	0.48
1:A:310:ASP:OD2	1:A:312:ASN:ND2	2.45	0.48
1:A:243:ASP:HB3	1:A:244:LYS:HD3	1.96	0.47
1:B:275:LYS:HE2	1:B:280:ARG:HG3	1.96	0.47
1:B:270:LEU:HD12	1:B:273:GLN:H	1.78	0.47
1:B:383:ASP:OD2	1:B:425:HIS:HE1	1.98	0.47
1:B:443:ARG:HD3	3:B:23:HOH:O	2.13	0.47
1:A:358:LYS:HB2	1:A:359:PRO:CD	2.45	0.47
1:B:271:GLN:NE2	1:B:277:VAL:H	2.13	0.46
1:B:358:LYS:HB2	1:B:359:PRO:CD	2.45	0.46

Continued on next page...

Continued from previous page...

Atom-1	Atom-2	Interatomic distance (Å)	Clash overlap (Å)
1:A:430:GLN:HG3	1:A:433:ALA:HB3	1.97	0.46
1:A:230:LYS:O	1:A:234:ARG:HG2	2.15	0.46
1:B:336:LYS:CD	1:B:350:ARG:HH12	2.29	0.46
1:A:249:ILE:HD12	1:A:255:LEU:HA	1.98	0.46
1:A:268:THR:N	1:A:269:PRO:HD2	2.29	0.46
1:A:208:SER:HB2	1:A:419:LEU:CD2	2.46	0.46
1:A:319:LYS:HD3	1:A:320:TYR:CE1	2.51	0.45
1:B:247:PHE:HB2	1:B:261:LYS:HD2	1.97	0.45
1:B:267:ILE:CD1	1:B:275:LYS:HB3	2.43	0.45
1:A:434:LYS:HE2	1:B:411:ASP:OD1	2.16	0.45
1:A:436:LEU:O	1:A:439:MET:HB2	2.16	0.45
1:B:279:ILE:HD11	1:B:357:ARG:HH22	1.81	0.45
1:B:370:PHE:HA	1:B:373:LYS:CE	2.43	0.45
1:A:288:ARG:NE	2:A:1:XCX:CAO	2.77	0.45
1:A:252:MET:SD	1:A:277:VAL:HG21	2.57	0.45
1:A:288:ARG:HE	2:A:1:XCX:CAO	2.30	0.45
1:B:403:VAL:HG12	1:B:407:GLU:HG3	1.98	0.45
1:A:262:ILE:HB	1:A:264:PHE:CE2	2.52	0.45
1:A:357:ARG:CG	1:A:359:PRO:HD2	2.37	0.44
1:B:348:MET:HB2	3:B:134:HOH:O	2.17	0.44
1:A:208:SER:HB2	1:A:419:LEU:HD22	1.98	0.44
1:A:320:TYR:CE2	1:A:476:LEU:HB3	2.52	0.44
1:A:325:ILE:HG12	1:A:388:ILE:HG23	1.99	0.44
1:A:271:GLN:NE2	1:A:277:VAL:H	2.16	0.44
1:A:468:LEU:O	1:A:468:LEU:HD13	2.17	0.44
1:A:288:ARG:HE	2:A:1:XCX:HAOA	1.82	0.44
1:B:264:PHE:HB3	1:B:266:HIS:CD2	2.53	0.44
1:B:336:LYS:HD3	1:B:350:ARG:HH12	1.83	0.44
1:A:357:ARG:HG2	1:A:358:LYS:N	2.33	0.43
1:A:446:VAL:O	1:A:450:VAL:HG23	2.18	0.43
1:A:474:LYS:O	1:A:475:ASP:HB2	2.18	0.43
1:B:274:SER:HB2	3:B:98:HOH:O	2.18	0.43
1:A:268:THR:HB	1:A:269:PRO:CD	2.48	0.43
1:A:271:GLN:OE1	1:A:272:GLU:OE2	2.36	0.43
1:A:387:PHE:O	1:A:391:ILE:HG12	2.17	0.43
1:A:289:SER:OG	2:A:1:XCX:CAC	2.53	0.43
1:A:268:THR:HB	1:A:269:PRO:HD3	2.01	0.43
1:A:403:VAL:O	1:A:407:GLU:HG3	2.19	0.43
1:A:212:ARG:HA	1:A:212:ARG:HD2	1.84	0.43
1:A:239:GLY:O	1:A:240:LYS:HB3	2.18	0.43
1:A:240:LYS:HG2	1:A:240:LYS:O	2.19	0.43

Continued on next page...

Continued from previous page...

Atom-1	Atom-2	Interatomic distance (Å)	Clash overlap (Å)
1:A:270:LEU:HD13	1:A:270:LEU:C	2.40	0.42
1:B:276:GLU:HG2	1:B:277:VAL:N	2.33	0.42
1:B:336:LYS:HD3	1:B:372:VAL:HG21	2.00	0.42
1:A:239:GLY:C	1:A:241:THR:N	2.70	0.42
1:A:252:MET:O	1:A:256:MET:HG3	2.18	0.42
1:A:288:ARG:CD	2:A:1:XCX:HAOA	2.49	0.42
1:A:212:ARG:CZ	1:A:423:LEU:HD12	2.49	0.42
1:A:220:ASP:O	1:A:224:LYS:HG3	2.19	0.42
1:B:446:VAL:O	1:B:450:VAL:HG23	2.19	0.42
1:A:207:GLU:HG3	1:A:209:ALA:HB3	2.01	0.42
1:B:253:ASN:HA	1:B:256:MET:HE3	2.02	0.42
1:A:287:PHE:O	1:A:290:VAL:CG1	2.67	0.42
1:B:271:GLN:HB2	1:B:277:VAL:N	2.34	0.42
1:B:244:LYS:N	1:B:244:LYS:CD	2.83	0.42
1:B:300:ALA:HA	1:B:303:ILE:HD12	2.02	0.42
1:A:425:HIS:N	1:A:426:PRO:HD3	2.35	0.41
2:A:1:XCX:HASA	2:A:1:XCX:HATA	1.56	0.41
1:B:212:ARG:O	1:B:216:LYS:HG3	2.20	0.41
1:B:293:VAL:HG22	1:B:322:VAL:HG11	2.02	0.41
1:A:287:PHE:O	1:A:290:VAL:HG13	2.20	0.41
1:B:239:GLY:O	1:B:240:LYS:HB3	2.21	0.41
1:A:404:LYS:N	1:A:405:PRO:HD2	2.36	0.41
1:B:253:ASN:HA	1:B:256:MET:CE	2.51	0.41
1:A:289:SER:O	1:A:293:VAL:HG23	2.21	0.40
1:B:397:ARG:HH11	1:B:443:ARG:NH2	2.12	0.40
1:B:277:VAL:HG13	1:B:278:ALA:H	1.85	0.40
1:A:307:VAL:HG22	3:A:9:HOH:O	2.21	0.40
1:A:359:PRO:HG2	1:A:360:PHE:CD1	2.56	0.40

There are no symmetry-related clashes.

5.3 Torsion angles [i](#)

5.3.1 Protein backbone [i](#)

In the following table, the Percentiles column shows the percent Ramachandran outliers of the chain as a percentile score with respect to all X-ray entries followed by that with respect to entries of similar resolution.

The Analysed column shows the number of residues for which the backbone conformation was analysed, and the total number of residues.

Mol	Chain	Analysed	Favoured	Allowed	Outliers	Percentiles	
1	A	268/287 (93%)	253 (94%)	10 (4%)	5 (2%)	8	7
1	B	268/287 (93%)	248 (92%)	13 (5%)	7 (3%)	5	4
All	All	536/574 (93%)	501 (94%)	23 (4%)	12 (2%)	6	5

All (12) Ramachandran outliers are listed below:

Mol	Chain	Res	Type
1	A	269	PRO
1	A	272	GLU
1	A	276	GLU
1	B	269	PRO
1	B	275	LYS
1	B	268	THR
1	B	469	LEU
1	B	472	ILE
1	B	276	GLU
1	A	359	PRO
1	B	227	PRO
1	A	268	THR

5.3.2 Protein sidechains [i](#)

In the following table, the Percentiles column shows the percent sidechain outliers of the chain as a percentile score with respect to all X-ray entries followed by that with respect to entries of similar resolution.

The Analysed column shows the number of residues for which the sidechain conformation was analysed, and the total number of residues.

Mol	Chain	Analysed	Rotameric	Outliers	Percentiles	
1	A	243/258 (94%)	235 (97%)	8 (3%)	38	53
1	B	243/258 (94%)	231 (95%)	12 (5%)	25	35
All	All	486/516 (94%)	466 (96%)	20 (4%)	30	43

All (20) residues with a non-rotameric sidechain are listed below:

Mol	Chain	Res	Type
1	A	216	LYS
1	A	244	LYS
1	A	271	GLN
1	A	283	GLN

Continued on next page...

Continued from previous page...

Mol	Chain	Res	Type
1	A	311	LEU
1	A	363	PHE
1	A	402	ASN
1	A	427	GLU
1	B	210	ASP
1	B	220	ASP
1	B	244	LYS
1	B	259	GLU
1	B	265	LYS
1	B	271	GLN
1	B	362	ASP
1	B	363	PHE
1	B	412	ASN
1	B	427	GLU
1	B	430	GLN
1	B	473	TYR

Sometimes sidechains can be flipped to improve hydrogen bonding and reduce clashes. All (17) such sidechains are listed below:

Mol	Chain	Res	Type
1	A	271	GLN
1	A	308	ASN
1	A	402	ASN
1	A	410	GLN
1	A	412	ASN
1	A	424	ASN
1	A	454	GLN
1	A	470	GLN
1	B	266	HIS
1	B	271	GLN
1	B	283	GLN
1	B	314	GLN
1	B	410	GLN
1	B	412	ASN
1	B	425	HIS
1	B	437	GLN
1	B	451	GLN

5.3.3 RNA

There are no RNA molecules in this entry.

5.4 Non-standard residues in protein, DNA, RNA chains [i](#)

There are no non-standard protein/DNA/RNA residues in this entry.

5.5 Carbohydrates [i](#)

There are no monosaccharides in this entry.

5.6 Ligand geometry [i](#)

1 ligand is modelled in this entry.

In the following table, the Counts columns list the number of bonds (or angles) for which Mogul statistics could be retrieved, the number of bonds (or angles) that are observed in the model and the number of bonds (or angles) that are defined in the Chemical Component Dictionary. The Link column lists molecule types, if any, to which the group is linked. The Z score for a bond length (or angle) is the number of standard deviations the observed value is removed from the expected value. A bond length (or angle) with $|Z| > 2$ is considered an outlier worth inspection. RMSZ is the root-mean-square of all Z scores of the bond lengths (or angles).

Mol	Type	Chain	Res	Link	Bond lengths			Bond angles		
					Counts	RMSZ	# Z > 2	Counts	RMSZ	# Z > 2
2	XCX	A	1	-	30,34,34	0.78	0	38,46,46	0.95	1 (2%)

In the following table, the Chirals column lists the number of chiral outliers, the number of chiral centers analysed, the number of these observed in the model and the number defined in the Chemical Component Dictionary. Similar counts are reported in the Torsion and Rings columns. '-' means no outliers of that kind were identified.

Mol	Type	Chain	Res	Link	Chirals	Torsions	Rings
2	XCX	A	1	-	-	6/25/27/27	0/3/3/3

There are no bond length outliers.

All (1) bond angle outliers are listed below:

Mol	Chain	Res	Type	Atoms	Z	Observed(°)	Ideal(°)
2	A	1	XCX	CBF-OAW-CBA	-4.29	114.07	120.95

There are no chirality outliers.

All (6) torsion outliers are listed below:

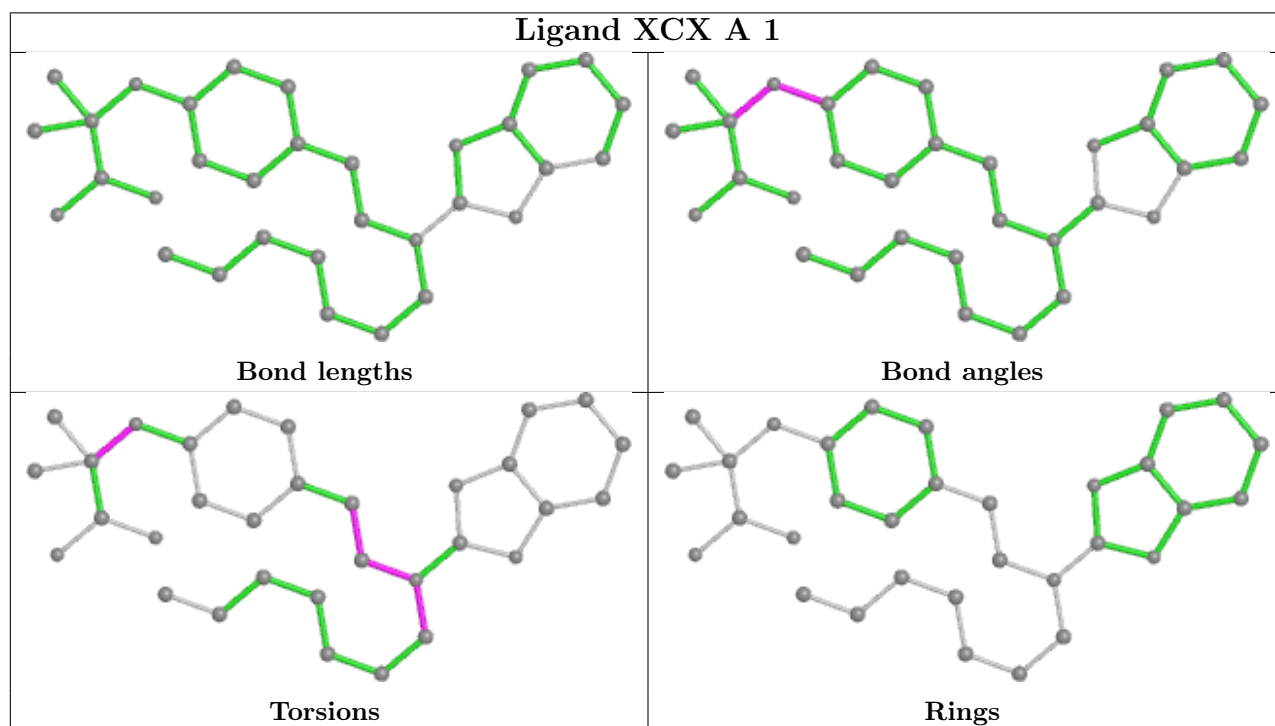
Mol	Chain	Res	Type	Atoms
2	A	1	XCX	CAR-CAT-N2E-CBB
2	A	1	XCX	CAS-CAU-N2E-CAT
2	A	1	XCX	CAS-CAU-N2E-CBB
2	A	1	XCX	CAY-CBF-OAW-CBA
2	A	1	XCX	CAZ-CAS-CAU-N2E
2	A	1	XCX	CAR-CAT-N2E-CAU

There are no ring outliers.

1 monomer is involved in 23 short contacts:

Mol	Chain	Res	Type	Clashes	Symm-Clashes
2	A	1	XCX	23	0

The following is a two-dimensional graphical depiction of Mogul quality analysis of bond lengths, bond angles, torsion angles, and ring geometry for all instances of the Ligand of Interest. In addition, ligands with molecular weight > 250 and outliers as shown on the validation Tables will also be included. For torsion angles, if less than 5% of the Mogul distribution of torsion angles is within 10 degrees of the torsion angle in question, then that torsion angle is considered an outlier. Any bond that is central to one or more torsion angles identified as an outlier by Mogul will be highlighted in the graph. For rings, the root-mean-square deviation (RMSD) between the ring in question and similar rings identified by Mogul is calculated over all ring torsion angles. If the average RMSD is greater than 60 degrees and the minimal RMSD between the ring in question and any Mogul-identified rings is also greater than 60 degrees, then that ring is considered an outlier. The outliers are highlighted in purple. The color gray indicates Mogul did not find sufficient equivalents in the CSD to analyse the geometry.



5.7 Other polymers [i](#)

There are no such residues in this entry.

5.8 Polymer linkage issues [i](#)

There are no chain breaks in this entry.

6 Fit of model and data

6.1 Protein, DNA and RNA chains

In the following table, the column labelled ‘#RSRZ > 2’ contains the number (and percentage) of RSRZ outliers, followed by percent RSRZ outliers for the chain as percentile scores relative to all X-ray entries and entries of similar resolution. The OWAB column contains the minimum, median, 95th percentile and maximum values of the occupancy-weighted average B-factor per residue. The column labelled ‘Q < 0.9’ lists the number of (and percentage) of residues with an average occupancy less than 0.9.

Mol	Chain	Analysed	<RSRZ>	#RSRZ>2	OWAB(Å ²)	Q<0.9
1	A	270/287 (94%)	0.92	41 (15%) 2 3	31, 51, 100, 100	1 (0%)
1	B	248/287 (86%)	1.29	46 (18%) 1 1	29, 52, 100, 100	1 (0%)
All	All	518/574 (90%)	1.10	87 (16%) 1 2	29, 52, 100, 100	2 (0%)

All (87) RSRZ outliers are listed below:

Mol	Chain	Res	Type	RSRZ
1	B	465	LEU	30.5
1	B	270	LEU	13.5
1	A	269	PRO	13.4
1	B	269	PRO	12.3
1	B	242	THR	11.7
1	A	274	SER	10.9
1	A	268	THR	10.4
1	B	274	SER	10.3
1	B	268	THR	10.0
1	B	272	GLU	8.9
1	B	240	LYS	8.7
1	B	271	GLN	8.5
1	B	267	ILE	8.2
1	A	271	GLN	7.5
1	A	275	LYS	7.2
1	A	267	ILE	7.1
1	B	273	GLN	6.9
1	A	465	LEU	6.9
1	B	266	HIS	6.6
1	B	264	PHE	6.4
1	A	240	LYS	6.3
1	A	266	HIS	5.9
1	A	263	LYS	5.8
1	A	270	LEU	5.8

Continued on next page...

Continued from previous page...

Mol	Chain	Res	Type	RSRZ
1	A	264	PHE	5.7
1	B	263	LYS	5.6
1	A	272	GLU	5.6
1	B	244	LYS	5.5
1	B	261	LYS	5.2
1	A	265	LYS	5.0
1	B	358	LYS	5.0
1	B	241	THR	5.0
1	A	273	GLN	4.8
1	B	256	MET	4.5
1	B	275	LYS	4.5
1	B	239	GLY	3.9
1	B	451	GLN	3.6
1	A	261	LYS	3.5
1	A	242	THR	3.4
1	A	358	LYS	3.3
1	A	475	ASP	3.2
1	A	256	MET	3.2
1	A	388	ILE	3.2
1	B	252	MET	3.1
1	B	260	ASP	3.1
1	B	363	PHE	3.1
1	B	362	ASP	3.1
1	B	283	GLN	3.0
1	B	212	ARG	3.0
1	A	262	ILE	3.0
1	B	327	TYR	2.9
1	B	282	PHE	2.9
1	B	311	LEU	2.8
1	B	207	GLU	2.8
1	A	260	ASP	2.8
1	B	443	ARG	2.7
1	A	390	VAL	2.7
1	A	285	CYS	2.6
1	A	387	PHE	2.6
1	B	281	ILE	2.5
1	A	322	VAL	2.5
1	A	389	ALA	2.4
1	B	357	ARG	2.4
1	B	388	ILE	2.4
1	A	209	ALA	2.4
1	B	243	ASP	2.4

Continued on next page...

Continued from previous page...

Mol	Chain	Res	Type	RSRZ
1	B	300	ALA	2.4
1	A	362	ASP	2.3
1	A	357	ARG	2.3
1	B	336	LYS	2.3
1	A	391	ILE	2.3
1	B	422	LYS	2.3
1	B	211	LEU	2.3
1	A	252	MET	2.3
1	A	330	LEU	2.1
1	A	259	GLU	2.1
1	A	474	LYS	2.1
1	A	243	ASP	2.1
1	A	464	SER	2.1
1	B	248	VAL	2.1
1	B	387	PHE	2.1
1	A	294	GLN	2.0
1	B	396	ASP	2.0
1	A	376	ALA	2.0
1	B	232	LYS	2.0
1	A	392	ILE	2.0
1	B	265	LYS	2.0

6.2 Non-standard residues in protein, DNA, RNA chains [i](#)

There are no non-standard protein/DNA/RNA residues in this entry.

6.3 Carbohydrates [i](#)

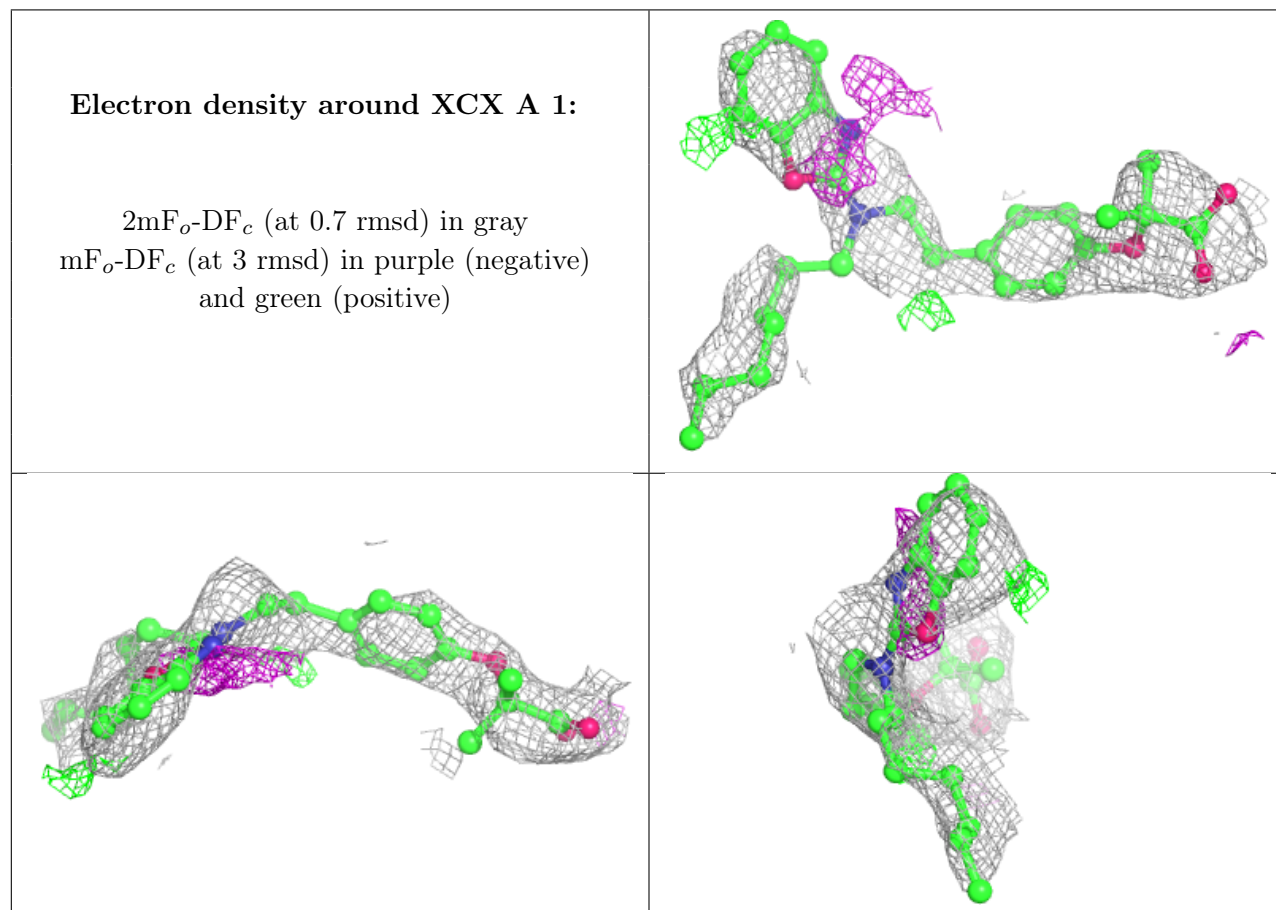
There are no monosaccharides in this entry.

6.4 Ligands [i](#)

In the following table, the Atoms column lists the number of modelled atoms in the group and the number defined in the chemical component dictionary. The B-factors column lists the minimum, median, 95th percentile and maximum values of B factors of atoms in the group. The column labelled 'Q< 0.9' lists the number of atoms with occupancy less than 0.9.

Mol	Type	Chain	Res	Atoms	RSCC	RSR	B-factors(\AA^2)	Q<0.9
2	XCX	A	1	32/32	0.73	0.36	81,95,97,97	0

The following is a graphical depiction of the model fit to experimental electron density of all instances of the Ligand of Interest. In addition, ligands with molecular weight > 250 and outliers as shown on the geometry validation Tables will also be included. Each fit is shown from different orientation to approximate a three-dimensional view.



6.5 Other polymers [i](#)

There are no such residues in this entry.