



Full wwPDB X-ray Structure Validation Report ⓘ

May 21, 2024 – 10:12 am BST

PDB ID : 8R9B
Title : A soakable crystal form of human CDK7 in complex with AMP-PNP
Authors : Mukherjee, M.; Cleasby, A.
Deposited on : 2023-11-30
Resolution : 2.21 Å(reported)

This is a Full wwPDB X-ray Structure Validation Report for a publicly released PDB entry.

We welcome your comments at validation@mail.wwpdb.org

A user guide is available at

<https://www.wwpdb.org/validation/2017/XrayValidationReportHelp>

with specific help available everywhere you see the ⓘ symbol.

The types of validation reports are described at

<http://www.wwpdb.org/validation/2017/FAQs#types>.

The following versions of software and data (see [references ⓘ](#)) were used in the production of this report:

MolProbity : 4.02b-467
Mogul : 1.8.4, CSD as541be (2020)
Xtriage (Phenix) : 1.13
EDS : 2.36.2
buster-report : 1.1.7 (2018)
Percentile statistics : 20191225.v01 (using entries in the PDB archive December 25th 2019)
Refmac : 5.8.0158
CCP4 : 7.0.044 (Gargrove)
Ideal geometry (proteins) : Engh & Huber (2001)
Ideal geometry (DNA, RNA) : Parkinson et al. (1996)
Validation Pipeline (wwPDB-VP) : 2.36.2

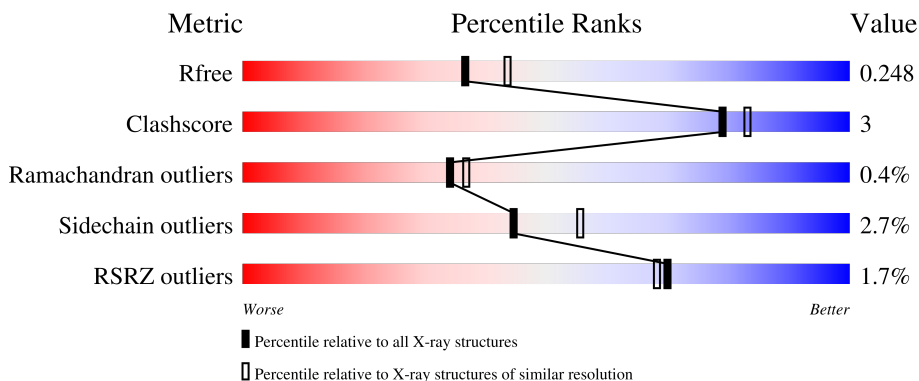
1 Overall quality at a glance

The following experimental techniques were used to determine the structure:

X-RAY DIFFRACTION



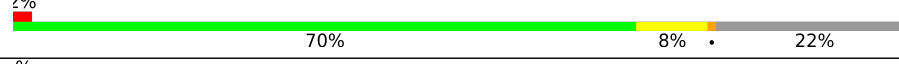

The reported resolution of this entry is 2.21 Å.

Percentile scores (ranging between 0-100) for global validation metrics of the entry are shown in the following graphic. The table shows the number of entries on which the scores are based.



Metric	Whole archive (#Entries)	Similar resolution (#Entries, resolution range(Å))
R_{free}	130704	5912 (2.24-2.20)
Clashscore	141614	6646 (2.24-2.20)
Ramachandran outliers	138981	6543 (2.24-2.20)
Sidechain outliers	138945	6544 (2.24-2.20)
RSRZ outliers	127900	5797 (2.24-2.20)

The table below summarises the geometric issues observed across the polymeric chains and their fit to the electron density. The red, orange, yellow and green segments of the lower bar indicate the fraction of residues that contain outliers for ≥ 3 , 2, 1 and 0 types of geometric quality criteria respectively. A grey segment represents the fraction of residues that are not modelled. The numeric value for each fraction is indicated below the corresponding segment, with a dot representing fractions $\leq 5\%$. The upper red bar (where present) indicates the fraction of residues that have poor fit to the electron density. The numeric value is given above the bar.

Mol	Chain	Length	Quality of chain
1	A	352	 2% 77% 8% 14%
1	B	352	 % 77% 7% 15%
1	C	352	 2% 70% 8% 22%
1	D	352	 % 73% 5% 21%

2 Entry composition [i](#)

There are 5 unique types of molecules in this entry. The entry contains 9775 atoms, of which 52 are hydrogens and 0 are deuteriums.

In the tables below, the ZeroOcc column contains the number of atoms modelled with zero occupancy, the AltConf column contains the number of residues with at least one atom in alternate conformation and the Trace column contains the number of residues modelled with at most 2 atoms.

- Molecule 1 is a protein called Cyclin-dependent kinase 7.

Mol	Chain	Residues	Atoms					ZeroOcc	AltConf	Trace
			Total	C	N	O	S			
1	A	301	2417	1562	413	430	12	0	1	0
1	B	298	2386	1544	406	425	11	0	0	0
1	C	276	2208	1434	372	391	11	0	0	0
1	D	277	2207	1435	367	394	11	0	0	0

There are 112 discrepancies between the modelled and reference sequences:

Chain	Residue	Modelled	Actual	Comment	Reference
A	-25	ILE	-	expression tag	UNP P50613
A	-24	MET	-	expression tag	UNP P50613
A	-23	SER	-	expression tag	UNP P50613
A	-22	TYR	-	expression tag	UNP P50613
A	-21	TYR	-	expression tag	UNP P50613
A	-20	HIS	-	expression tag	UNP P50613
A	-19	HIS	-	expression tag	UNP P50613
A	-18	HIS	-	expression tag	UNP P50613
A	-17	HIS	-	expression tag	UNP P50613
A	-16	HIS	-	expression tag	UNP P50613
A	-15	HIS	-	expression tag	UNP P50613
A	-14	ASP	-	expression tag	UNP P50613
A	-13	TYR	-	expression tag	UNP P50613
A	-12	ASP	-	expression tag	UNP P50613
A	-11	ILE	-	expression tag	UNP P50613
A	-10	PRO	-	expression tag	UNP P50613
A	-9	THR	-	expression tag	UNP P50613
A	-8	THR	-	expression tag	UNP P50613
A	-7	GLU	-	expression tag	UNP P50613
A	-6	ASN	-	expression tag	UNP P50613
A	-5	LEU	-	expression tag	UNP P50613

Continued on next page...

Continued from previous page...

Chain	Residue	Modelled	Actual	Comment	Reference
A	-4	TYR	-	expression tag	UNP P50613
A	-3	PHE	-	expression tag	UNP P50613
A	-2	GLN	-	expression tag	UNP P50613
A	-1	GLY	-	expression tag	UNP P50613
A	0	SER	-	expression tag	UNP P50613
A	164	ASP	SER	engineered mutation	UNP P50613
A	170	GLU	THR	engineered mutation	UNP P50613
B	-25	ILE	-	expression tag	UNP P50613
B	-24	MET	-	expression tag	UNP P50613
B	-23	SER	-	expression tag	UNP P50613
B	-22	TYR	-	expression tag	UNP P50613
B	-21	TYR	-	expression tag	UNP P50613
B	-20	HIS	-	expression tag	UNP P50613
B	-19	HIS	-	expression tag	UNP P50613
B	-18	HIS	-	expression tag	UNP P50613
B	-17	HIS	-	expression tag	UNP P50613
B	-16	HIS	-	expression tag	UNP P50613
B	-15	HIS	-	expression tag	UNP P50613
B	-14	ASP	-	expression tag	UNP P50613
B	-13	TYR	-	expression tag	UNP P50613
B	-12	ASP	-	expression tag	UNP P50613
B	-11	ILE	-	expression tag	UNP P50613
B	-10	PRO	-	expression tag	UNP P50613
B	-9	THR	-	expression tag	UNP P50613
B	-8	THR	-	expression tag	UNP P50613
B	-7	GLU	-	expression tag	UNP P50613
B	-6	ASN	-	expression tag	UNP P50613
B	-5	LEU	-	expression tag	UNP P50613
B	-4	TYR	-	expression tag	UNP P50613
B	-3	PHE	-	expression tag	UNP P50613
B	-2	GLN	-	expression tag	UNP P50613
B	-1	GLY	-	expression tag	UNP P50613
B	0	SER	-	expression tag	UNP P50613
B	164	ASP	SER	engineered mutation	UNP P50613
B	170	GLU	THR	engineered mutation	UNP P50613
C	-25	ILE	-	expression tag	UNP P50613
C	-24	MET	-	expression tag	UNP P50613
C	-23	SER	-	expression tag	UNP P50613
C	-22	TYR	-	expression tag	UNP P50613
C	-21	TYR	-	expression tag	UNP P50613
C	-20	HIS	-	expression tag	UNP P50613
C	-19	HIS	-	expression tag	UNP P50613

Continued on next page...

Continued from previous page...

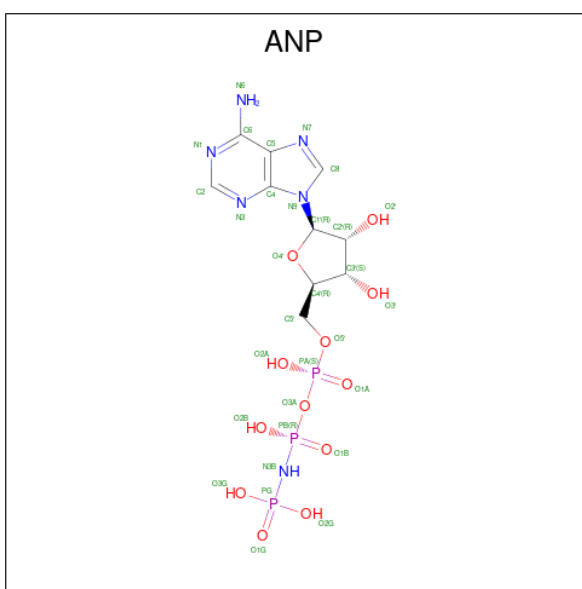
Chain	Residue	Modelled	Actual	Comment	Reference
C	-18	HIS	-	expression tag	UNP P50613
C	-17	HIS	-	expression tag	UNP P50613
C	-16	HIS	-	expression tag	UNP P50613
C	-15	HIS	-	expression tag	UNP P50613
C	-14	ASP	-	expression tag	UNP P50613
C	-13	TYR	-	expression tag	UNP P50613
C	-12	ASP	-	expression tag	UNP P50613
C	-11	ILE	-	expression tag	UNP P50613
C	-10	PRO	-	expression tag	UNP P50613
C	-9	THR	-	expression tag	UNP P50613
C	-8	THR	-	expression tag	UNP P50613
C	-7	GLU	-	expression tag	UNP P50613
C	-6	ASN	-	expression tag	UNP P50613
C	-5	LEU	-	expression tag	UNP P50613
C	-4	TYR	-	expression tag	UNP P50613
C	-3	PHE	-	expression tag	UNP P50613
C	-2	GLN	-	expression tag	UNP P50613
C	-1	GLY	-	expression tag	UNP P50613
C	0	SER	-	expression tag	UNP P50613
C	164	ASP	SER	engineered mutation	UNP P50613
C	170	GLU	THR	engineered mutation	UNP P50613
D	-25	ILE	-	expression tag	UNP P50613
D	-24	MET	-	expression tag	UNP P50613
D	-23	SER	-	expression tag	UNP P50613
D	-22	TYR	-	expression tag	UNP P50613
D	-21	TYR	-	expression tag	UNP P50613
D	-20	HIS	-	expression tag	UNP P50613
D	-19	HIS	-	expression tag	UNP P50613
D	-18	HIS	-	expression tag	UNP P50613
D	-17	HIS	-	expression tag	UNP P50613
D	-16	HIS	-	expression tag	UNP P50613
D	-15	HIS	-	expression tag	UNP P50613
D	-14	ASP	-	expression tag	UNP P50613
D	-13	TYR	-	expression tag	UNP P50613
D	-12	ASP	-	expression tag	UNP P50613
D	-11	ILE	-	expression tag	UNP P50613
D	-10	PRO	-	expression tag	UNP P50613
D	-9	THR	-	expression tag	UNP P50613
D	-8	THR	-	expression tag	UNP P50613
D	-7	GLU	-	expression tag	UNP P50613
D	-6	ASN	-	expression tag	UNP P50613
D	-5	LEU	-	expression tag	UNP P50613

Continued on next page...

Continued from previous page...

Chain	Residue	Modelled	Actual	Comment	Reference
D	-4	TYR	-	expression tag	UNP P50613
D	-3	PHE	-	expression tag	UNP P50613
D	-2	GLN	-	expression tag	UNP P50613
D	-1	GLY	-	expression tag	UNP P50613
D	0	SER	-	expression tag	UNP P50613
D	164	ASP	SER	engineered mutation	UNP P50613
D	170	GLU	THR	engineered mutation	UNP P50613

- Molecule 2 is PHOSPHOAMINOPHOSPHONIC ACID-ADENYLATE ESTER (three-letter code: ANP) (formula: C₁₀H₁₇N₆O₁₂P₃) (labeled as "Ligand of Interest" by depositor).



Mol	Chain	Residues	Atoms					ZeroOcc	AltConf	
			Total	C	H	N	O			P
2	A	1	Total	C	H	N	O	P	2	0
44	10	13	6	12	3					
2	B	1	Total	C	H	N	O	P	2	0
44	10	13	6	12	3					
2	C	1	Total	C	H	N	O	P	2	0
44	10	13	6	12	3					
2	D	1	Total	C	H	N	O	P	2	0
44	10	13	6	12	3					

- Molecule 3 is MAGNESIUM ION (three-letter code: MG) (formula: Mg).

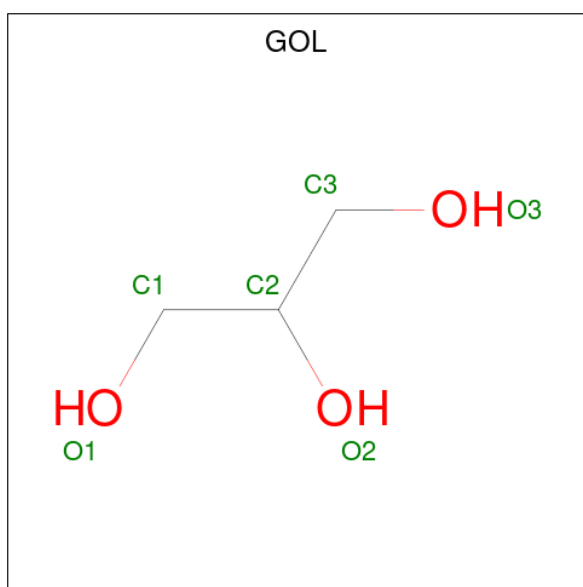
Mol	Chain	Residues	Atoms		ZeroOcc	AltConf
3	A	1	Total	Mg	0	0
1	1					

Continued on next page...

Continued from previous page...

Mol	Chain	Residues	Atoms	ZeroOcc	AltConf
3	B	1	Total Mg 1 1	0	0
3	D	1	Total Mg 1 1	0	0

- Molecule 4 is GLYCEROL (three-letter code: GOL) (formula: C₃H₈O₃).



Mol	Chain	Residues	Atoms	ZeroOcc	AltConf
4	B	1	Total C O 6 3 3	0	0
4	C	1	Total C O 6 3 3	0	0
4	D	1	Total C O 6 3 3	0	0

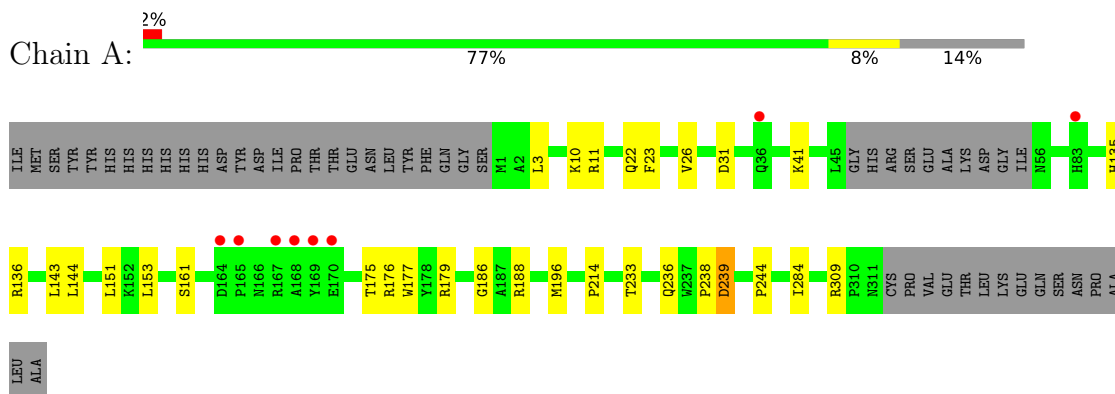
- Molecule 5 is water.

Mol	Chain	Residues	Atoms	ZeroOcc	AltConf
5	A	113	Total O 113 113	0	0
5	B	96	Total O 96 96	0	0
5	C	79	Total O 79 79	0	0
5	D	72	Total O 72 72	0	0

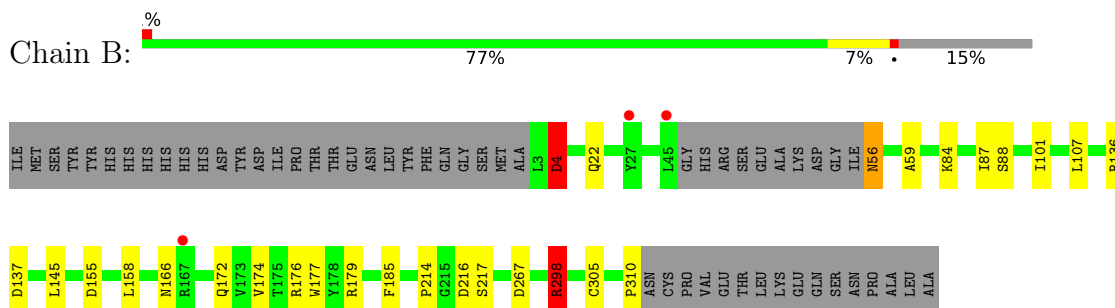
3 Residue-property plots [i](#)

These plots are drawn for all protein, RNA, DNA and oligosaccharide chains in the entry. The first graphic for a chain summarises the proportions of the various outlier classes displayed in the second graphic. The second graphic shows the sequence view annotated by issues in geometry and electron density. Residues are color-coded according to the number of geometric quality criteria for which they contain at least one outlier: green = 0, yellow = 1, orange = 2 and red = 3 or more. A red dot above a residue indicates a poor fit to the electron density ($RSRZ > 2$). Stretches of 2 or more consecutive residues without any outlier are shown as a green connector. Residues present in the sample, but not in the model, are shown in grey.

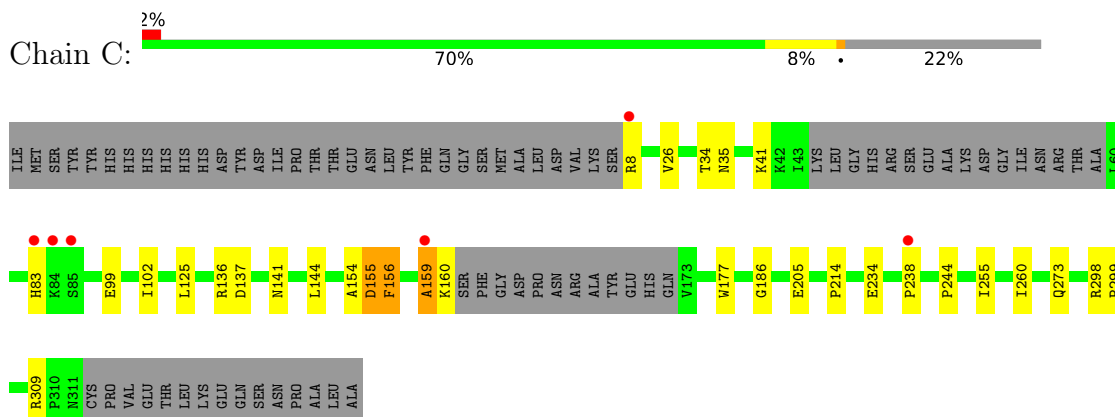
- Molecule 1: Cyclin-dependent kinase 7



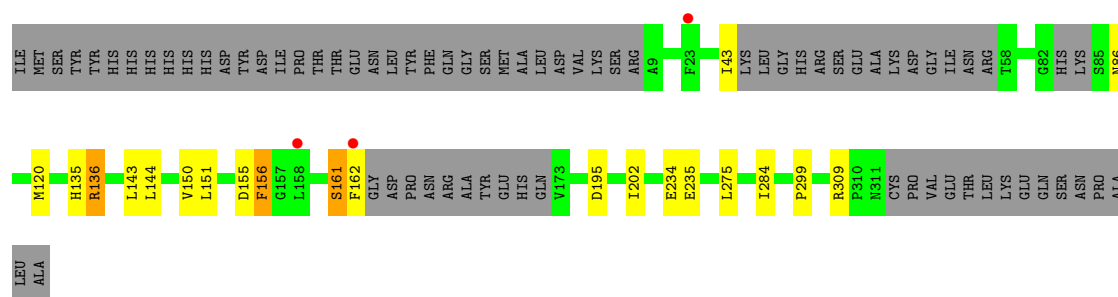
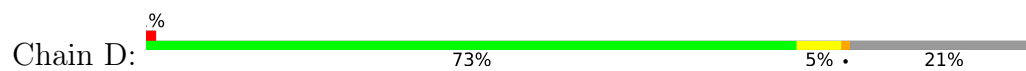
- Molecule 1: Cyclin-dependent kinase 7



- Molecule 1: Cyclin-dependent kinase 7



- Molecule 1: Cyclin-dependent kinase 7



4 Data and refinement statistics i

Property	Value	Source
Space group	P 1 21 1	Depositor
Cell constants a, b, c, α , β , γ	76.14Å 180.28Å 76.33Å 90.00° 117.85° 90.00°	Depositor
Resolution (Å)	90.14 – 2.21 90.14 – 2.21	Depositor EDS
% Data completeness (in resolution range)	75.6 (90.14-2.21) 75.6 (90.14-2.21)	Depositor EDS
R_{merge}	(Not available)	Depositor
R_{sym}	(Not available)	Depositor
$\langle I/\sigma(I) \rangle$ ¹	1.47 (at 2.20Å)	Xtriage
Refinement program	REFMAC 5.8.0232	Depositor
R, R_{free}	0.192 , 0.243 0.199 , 0.248	Depositor DCC
R_{free} test set	3529 reflections (5.15%)	wwPDB-VP
Wilson B-factor (Å ²)	44.3	Xtriage
Anisotropy	0.027	Xtriage
Bulk solvent k_{sol} (e/Å ³), B_{sol} (Å ²)	0.33 , 35.1	EDS
L-test for twinning ²	$\langle L \rangle = 0.51$, $\langle L^2 \rangle = 0.35$	Xtriage
Estimated twinning fraction	0.000 for -h-l,k,h 0.000 for l,k,-h-l 0.017 for h,-k,-h-l 0.006 for -h-l,-k,l 0.014 for l,-k,h	Xtriage
F_o, F_c correlation	0.95	EDS
Total number of atoms	9775	wwPDB-VP
Average B, all atoms (Å ²)	52.0	wwPDB-VP

Xtriage's analysis on translational NCS is as follows: *The largest off-origin peak in the Patterson function is 4.34% of the height of the origin peak. No significant pseudotranslation is detected.*

¹Intensities estimated from amplitudes.

²Theoretical values of $\langle |L| \rangle$, $\langle L^2 \rangle$ for acentric reflections are 0.5, 0.333 respectively for untwinned datasets, and 0.375, 0.2 for perfectly twinned datasets.

5 Model quality [i](#)

5.1 Standard geometry [i](#)

Bond lengths and bond angles in the following residue types are not validated in this section: MG, ANP, GOL

The Z score for a bond length (or angle) is the number of standard deviations the observed value is removed from the expected value. A bond length (or angle) with $|Z| > 5$ is considered an outlier worth inspection. RMSZ is the root-mean-square of all Z scores of the bond lengths (or angles).

Mol	Chain	Bond lengths		Bond angles	
		RMSZ	# Z >5	RMSZ	# Z >5
1	A	0.62	0/2476	0.78	2/3356 (0.1%)
1	B	0.62	0/2444	0.79	4/3313 (0.1%)
1	C	0.57	0/2261	0.74	1/3065 (0.0%)
1	D	0.56	0/2259	0.75	1/3063 (0.0%)
All	All	0.59	0/9440	0.76	8/12797 (0.1%)

Chiral center outliers are detected by calculating the chiral volume of a chiral center and verifying if the center is modelled as a planar moiety or with the opposite hand. A planarity outlier is detected by checking planarity of atoms in a peptide group, atoms in a mainchain group or atoms of a sidechain that are expected to be planar.

Mol	Chain	#Chirality outliers	#Planarity outliers
1	A	0	2
1	B	0	2
1	C	0	1
1	D	0	2
All	All	0	7

There are no bond length outliers.

All (8) bond angle outliers are listed below:

Mol	Chain	Res	Type	Atoms	Z	Observed(°)	Ideal(°)
1	B	267	ASP	CB-CG-OD2	-6.94	112.05	118.30
1	B	267	ASP	CB-CG-OD1	6.14	123.83	118.30
1	D	195	ASP	CB-CG-OD1	5.80	123.52	118.30
1	C	137	ASP	CB-CG-OD1	5.75	123.48	118.30
1	B	4	ASP	CB-CG-OD1	5.45	123.20	118.30
1	B	137	ASP	CB-CG-OD1	5.37	123.13	118.30
1	A	239	ASP	CB-CG-OD1	5.19	122.97	118.30
1	A	239	ASP	CB-CG-OD2	-5.11	113.70	118.30

There are no chirality outliers.

All (7) planarity outliers are listed below:

Mol	Chain	Res	Type	Group
1	A	188	ARG	Sidechain
1	A	309	ARG	Sidechain
1	B	136	ARG	Sidechain
1	B	298	ARG	Sidechain
1	C	309	ARG	Sidechain
1	D	136	ARG	Sidechain
1	D	309	ARG	Sidechain

5.2 Too-close contacts [i](#)

In the following table, the Non-H and H(model) columns list the number of non-hydrogen atoms and hydrogen atoms in the chain respectively. The H(added) column lists the number of hydrogen atoms added and optimized by MolProbity. The Clashes column lists the number of clashes within the asymmetric unit, whereas Symm-Clashes lists symmetry-related clashes.

Mol	Chain	Non-H	H(model)	H(added)	Clashes	Symm-Clashes
1	A	2417	0	2442	13	0
1	B	2386	0	2413	12	0
1	C	2208	0	2239	18	0
1	D	2207	0	2231	9	0
2	A	31	13	13	0	0
2	B	31	13	13	0	0
2	C	31	13	13	0	0
2	D	31	13	13	1	0
3	A	1	0	0	0	0
3	B	1	0	0	0	0
3	D	1	0	0	0	0
4	B	6	0	8	0	0
4	C	6	0	8	0	0
4	D	6	0	8	0	0
5	A	113	0	0	0	0
5	B	96	0	0	1	0
5	C	79	0	0	1	0
5	D	72	0	0	1	0
All	All	9723	52	9401	53	0

The all-atom clashscore is defined as the number of clashes found per 1000 atoms (including hydrogen atoms). The all-atom clashscore for this structure is 3.

All (53) close contacts within the same asymmetric unit are listed below, sorted by their clash

magnitude.

Atom-1	Atom-2	Interatomic distance (Å)	Clash overlap (Å)
1:A:238:PRO:O	1:A:239:ASP:HB2	1.96	0.65
1:A:26:VAL:HG22	1:A:41:LYS:HG2	1.81	0.63
1:A:186:GLY:O	1:A:244:PRO:HG2	1.99	0.63
1:C:156:PHE:HD1	1:C:156:PHE:N	2.05	0.55
1:C:234:GLU:OE2	1:C:238:PRO:O	2.24	0.55
1:C:156:PHE:N	1:C:156:PHE:CD1	2.77	0.52
1:D:144:LEU:O	1:D:151:LEU:HA	2.10	0.52
1:B:22:GLN:O	1:B:166:ASN:HB3	2.11	0.50
1:C:99:GLU:OE1	1:C:141:ASN:HB3	2.13	0.49
1:A:196:MET:HG3	1:A:284:ILE:O	2.13	0.49
1:A:143:LEU:HD22	1:A:153:LEU:HD23	1.95	0.48
1:B:4:ASP:N	1:B:4:ASP:OD1	2.47	0.48
1:B:177:TRP:CD1	1:B:214:PRO:HA	2.48	0.48
1:C:34:THR:O	1:C:35:ASN:HB2	2.14	0.48
1:B:176:ARG:NH1	5:B:503:HOH:O	2.37	0.47
1:B:56:ASN:O	1:B:59:ALA:N	2.48	0.47
1:C:159:ALA:O	1:C:160:LYS:HG3	2.14	0.47
1:A:11:ARG:NH1	1:A:31:ASP:OD2	2.49	0.46
1:C:102:ILE:HD13	1:C:205:GLU:HG2	1.97	0.46
1:A:144:LEU:O	1:A:151:LEU:HA	2.15	0.46
1:A:22:GLN:HB3	1:A:23:PHE:CD2	2.51	0.46
1:C:298:ARG:CD	1:C:299:PRO:HA	2.46	0.45
1:B:179:ARG:HH21	1:B:179:ARG:HG3	1.81	0.45
1:B:298:ARG:HH11	1:B:298:ARG:HG3	1.82	0.45
1:D:161:SER:O	1:D:162:PHE:C	2.54	0.45
1:A:135:HIS:O	1:A:136:ARG:HB2	2.18	0.43
1:A:143:LEU:CD2	1:A:153:LEU:CD2	2.97	0.43
1:C:186:GLY:O	1:C:244:PRO:HG2	2.19	0.43
1:D:120:MET:HE1	5:D:526:HOH:O	2.19	0.43
1:C:273:GLN:HG3	5:C:548:HOH:O	2.18	0.43
1:B:172:GLN:O	1:B:174:VAL:HG13	2.19	0.42
1:C:234:GLU:HA	1:C:234:GLU:OE1	2.19	0.42
1:D:135:HIS:O	1:D:136:ARG:HB2	2.20	0.42
1:C:255:ILE:HG22	1:C:260:ILE:HG13	2.02	0.42
1:C:298:ARG:HD3	1:C:299:PRO:HA	2.01	0.42
1:D:43:ILE:O	1:D:86:ASN:ND2	2.53	0.42
1:D:275:LEU:HD23	1:D:284:ILE:HG22	2.01	0.41
1:D:43:ILE:O	1:D:43:ILE:HG22	2.20	0.41
1:A:177:TRP:CD1	1:A:214:PRO:HA	2.55	0.41
1:B:101:ILE:CD1	1:B:145:LEU:HD13	2.51	0.41
1:C:159:ALA:O	1:C:160:LYS:CG	2.68	0.41

Continued on next page...

Continued from previous page...

Atom-1	Atom-2	Interatomic distance (Å)	Clash overlap (Å)
1:A:151:LEU:C	1:A:151:LEU:HD23	2.40	0.41
1:D:143:LEU:HD11	1:D:202:ILE:HD13	2.02	0.41
1:B:179:ARG:HG3	1:B:179:ARG:NH2	2.35	0.41
1:D:120:MET:HE1	1:D:150:VAL:HA	2.02	0.41
1:A:233:THR:HG23	1:A:236:GLN:OE1	2.20	0.41
2:D:402:ANP:PA	2:D:402:ANP:O1G	2.79	0.41
1:C:177:TRP:CD1	1:C:214:PRO:HA	2.56	0.40
1:B:176:ARG:HD3	1:B:217:SER:O	2.20	0.40
1:C:26:VAL:HG22	1:C:41:LYS:HG2	2.03	0.40
1:C:144:LEU:CD1	1:C:154:ALA:HB2	2.51	0.40
1:C:125:LEU:HD23	1:C:125:LEU:HA	1.88	0.40
1:B:158:LEU:HD12	1:B:158:LEU:HA	1.91	0.40

There are no symmetry-related clashes.

5.3 Torsion angles [i](#)

5.3.1 Protein backbone [i](#)

In the following table, the Percentiles column shows the percent Ramachandran outliers of the chain as a percentile score with respect to all X-ray entries followed by that with respect to entries of similar resolution.

The Analysed column shows the number of residues for which the backbone conformation was analysed, and the total number of residues.

Mol	Chain	Analysed	Favoured	Allowed	Outliers	Percentiles	
1	A	298/352 (85%)	284 (95%)	14 (5%)	0	100	100
1	B	294/352 (84%)	278 (95%)	14 (5%)	2 (1%)	22	21
1	C	270/352 (77%)	256 (95%)	12 (4%)	2 (1%)	22	21
1	D	269/352 (76%)	262 (97%)	6 (2%)	1 (0%)	34	37
All	All	1131/1408 (80%)	1080 (96%)	46 (4%)	5 (0%)	34	37

All (5) Ramachandran outliers are listed below:

Mol	Chain	Res	Type
1	D	156	PHE
1	B	84	LYS
1	C	155	ASP

Continued on next page...

Continued from previous page...

Mol	Chain	Res	Type
1	B	155	ASP
1	C	159	ALA

5.3.2 Protein sidechains [i](#)

In the following table, the Percentiles column shows the percent sidechain outliers of the chain as a percentile score with respect to all X-ray entries followed by that with respect to entries of similar resolution.

The Analysed column shows the number of residues for which the sidechain conformation was analysed, and the total number of residues.

Mol	Chain	Analysed	Rotameric	Outliers	Percentiles
1	A	263/307 (86%)	257 (98%)	6 (2%)	50 62
1	B	260/307 (85%)	250 (96%)	10 (4%)	33 41
1	C	241/307 (78%)	236 (98%)	5 (2%)	53 65
1	D	241/307 (78%)	235 (98%)	6 (2%)	47 58
All	All	1005/1228 (82%)	978 (97%)	27 (3%)	44 55

All (27) residues with a non-rotameric sidechain are listed below:

Mol	Chain	Res	Type
1	A	3	LEU
1	A	10	LYS
1	A	161	SER
1	A	175	THR
1	A	176	ARG
1	A	179	ARG
1	B	4	ASP
1	B	56	ASN
1	B	87	ILE
1	B	88	SER
1	B	107	LEU
1	B	185	PHE
1	B	216	ASP
1	B	298	ARG
1	B	305	CYS
1	B	310	PRO
1	C	8	ARG
1	C	83	HIS
1	C	136	ARG

Continued on next page...

Continued from previous page...

Mol	Chain	Res	Type
1	C	155	ASP
1	C	156	PHE
1	D	155	ASP
1	D	156	PHE
1	D	161	SER
1	D	234	GLU
1	D	235	GLU
1	D	299	PRO

Sometimes sidechains can be flipped to improve hydrogen bonding and reduce clashes. All (5) such sidechains are listed below:

Mol	Chain	Res	Type
1	A	36	GLN
1	B	22	GLN
1	B	172	GLN
1	D	33	ASN
1	D	86	ASN

5.3.3 RNA [i](#)

There are no RNA molecules in this entry.

5.4 Non-standard residues in protein, DNA, RNA chains [i](#)

There are no non-standard protein/DNA/RNA residues in this entry.

5.5 Carbohydrates [i](#)

There are no monosaccharides in this entry.

5.6 Ligand geometry [i](#)

Of 10 ligands modelled in this entry, 3 are monoatomic - leaving 7 for Mogul analysis.

In the following table, the Counts columns list the number of bonds (or angles) for which Mogul statistics could be retrieved, the number of bonds (or angles) that are observed in the model and the number of bonds (or angles) that are defined in the Chemical Component Dictionary. The Link column lists molecule types, if any, to which the group is linked. The Z score for a bond length (or angle) is the number of standard deviations the observed value is removed from the

expected value. A bond length (or angle) with $|Z| > 2$ is considered an outlier worth inspection. RMSZ is the root-mean-square of all Z scores of the bond lengths (or angles).

Mol	Type	Chain	Res	Link	Bond lengths			Bond angles		
					Counts	RMSZ	# Z > 2	Counts	RMSZ	# Z > 2
2	ANP	A	401	3	29,33,33	1.87	8 (27%)	31,52,52	1.95	6 (19%)
4	GOL	B	401	-	5,5,5	0.38	0	5,5,5	0.33	0
2	ANP	B	402	3	29,33,33	1.95	9 (31%)	31,52,52	1.98	7 (22%)
4	GOL	D	401	-	5,5,5	0.40	0	5,5,5	0.31	0
2	ANP	D	402	3	29,33,33	2.08	7 (24%)	31,52,52	1.54	5 (16%)
4	GOL	C	401	-	5,5,5	0.51	0	5,5,5	0.83	0
2	ANP	C	402	-	29,33,33	2.04	8 (27%)	31,52,52	1.71	8 (25%)

In the following table, the Chirals column lists the number of chiral outliers, the number of chiral centers analysed, the number of these observed in the model and the number defined in the Chemical Component Dictionary. Similar counts are reported in the Torsion and Rings columns. '-' means no outliers of that kind were identified.

Mol	Type	Chain	Res	Link	Chirals	Torsions	Rings
2	ANP	A	401	3	-	2/14/38/38	0/3/3/3
4	GOL	B	401	-	-	1/4/4/4	-
2	ANP	B	402	3	-	1/14/38/38	0/3/3/3
4	GOL	D	401	-	-	3/4/4/4	-
2	ANP	D	402	3	-	4/14/38/38	0/3/3/3
4	GOL	C	401	-	-	0/4/4/4	-
2	ANP	C	402	-	-	6/14/38/38	0/3/3/3

All (32) bond length outliers are listed below:

Mol	Chain	Res	Type	Atoms	Z	Observed(Å)	Ideal(Å)
2	D	402	ANP	PB-O3A	6.28	1.67	1.59
2	B	402	ANP	PB-N3B	4.89	1.76	1.63
2	C	402	ANP	PB-N3B	4.76	1.75	1.63
2	C	402	ANP	PB-O1B	4.65	1.53	1.46
2	D	402	ANP	PG-N3B	4.65	1.75	1.63
2	C	402	ANP	PG-N3B	4.56	1.75	1.63
2	B	402	ANP	PG-N3B	4.55	1.75	1.63
2	A	401	ANP	PB-N3B	4.53	1.75	1.63
2	A	401	ANP	PG-N3B	4.13	1.74	1.63
2	C	402	ANP	PB-O3A	4.09	1.64	1.59
2	D	402	ANP	PB-N3B	4.06	1.74	1.63
2	A	401	ANP	PG-O1G	3.77	1.52	1.46
2	B	402	ANP	PB-O1B	3.61	1.51	1.46

Continued on next page...

Continued from previous page...

Mol	Chain	Res	Type	Atoms	Z	Observed(Å)	Ideal(Å)
2	A	401	ANP	PB-O1B	3.46	1.51	1.46
2	B	402	ANP	PG-O1G	3.40	1.51	1.46
2	D	402	ANP	PG-O1G	3.33	1.51	1.46
2	D	402	ANP	PB-O1B	2.83	1.50	1.46
2	C	402	ANP	PG-O1G	2.72	1.50	1.46
2	B	402	ANP	C5-C4	2.62	1.47	1.40
2	B	402	ANP	O4'-C1'	2.51	1.44	1.41
2	C	402	ANP	C5-C4	2.47	1.47	1.40
2	A	401	ANP	C5-C4	2.43	1.47	1.40
2	D	402	ANP	C5-C4	2.34	1.47	1.40
2	C	402	ANP	PG-O3G	-2.21	1.50	1.56
2	A	401	ANP	PB-O3A	2.16	1.61	1.59
2	D	402	ANP	PB-O2B	-2.15	1.51	1.56
2	B	402	ANP	PB-O2B	-2.07	1.51	1.56
2	B	402	ANP	PG-O2G	-2.05	1.51	1.56
2	A	401	ANP	PG-O3G	-2.04	1.51	1.56
2	A	401	ANP	PG-O2G	-2.04	1.51	1.56
2	C	402	ANP	PB-O2B	-2.03	1.51	1.56
2	B	402	ANP	PB-O3A	2.02	1.61	1.59

All (26) bond angle outliers are listed below:

Mol	Chain	Res	Type	Atoms	Z	Observed(°)	Ideal(°)
2	B	402	ANP	O2B-PB-O1B	5.89	122.26	109.92
2	A	401	ANP	O1G-PG-N3B	-5.71	103.36	111.77
2	C	402	ANP	O2B-PB-O1B	4.44	119.23	109.92
2	B	402	ANP	O1B-PB-N3B	-4.36	105.36	111.77
2	A	401	ANP	O2B-PB-O1B	4.21	118.75	109.92
2	A	401	ANP	O1B-PB-N3B	-3.97	105.93	111.77
2	B	402	ANP	O1G-PG-N3B	-3.96	105.93	111.77
2	D	402	ANP	O2G-PG-O3G	3.76	117.66	107.64
2	B	402	ANP	O2G-PG-O3G	3.56	117.12	107.64
2	C	402	ANP	O1G-PG-N3B	-3.51	106.60	111.77
2	D	402	ANP	N3-C2-N1	-3.45	123.28	128.68
2	C	402	ANP	O2G-PG-O3G	3.21	116.19	107.64
2	C	402	ANP	N3-C2-N1	-3.15	123.75	128.68
2	B	402	ANP	N3-C2-N1	-3.10	123.84	128.68
2	A	401	ANP	N3-C2-N1	-3.02	123.96	128.68
2	A	401	ANP	C4-C5-N7	-2.92	106.35	109.40
2	B	402	ANP	C4-C5-N7	-2.60	106.69	109.40
2	C	402	ANP	PB-O3A-PA	-2.58	123.54	132.62
2	C	402	ANP	O1B-PB-N3B	-2.51	108.08	111.77

Continued on next page...

Continued from previous page...

Mol	Chain	Res	Type	Atoms	Z	Observed(°)	Ideal(°)
2	A	401	ANP	O2G-PG-O3G	2.42	114.07	107.64
2	B	402	ANP	PB-O3A-PA	-2.33	124.42	132.62
2	C	402	ANP	C4-C5-N7	-2.25	107.05	109.40
2	D	402	ANP	C4-C5-N7	-2.11	107.20	109.40
2	D	402	ANP	O3A-PB-N3B	-2.09	100.79	106.59
2	D	402	ANP	O1G-PG-N3B	-2.04	108.76	111.77
2	C	402	ANP	C2-N1-C6	2.01	122.19	118.75

There are no chirality outliers.

All (17) torsion outliers are listed below:

Mol	Chain	Res	Type	Atoms
2	A	401	ANP	O4'-C4'-C5'-O5'
2	A	401	ANP	C3'-C4'-C5'-O5'
2	B	402	ANP	PB-N3B-PG-O1G
2	C	402	ANP	PB-N3B-PG-O1G
2	C	402	ANP	PG-N3B-PB-O3A
2	C	402	ANP	PA-O3A-PB-O2B
2	C	402	ANP	C5'-O5'-PA-O2A
2	D	402	ANP	PG-N3B-PB-O1B
2	D	402	ANP	O4'-C4'-C5'-O5'
2	D	402	ANP	C3'-C4'-C5'-O5'
4	D	401	GOL	O1-C1-C2-C3
2	C	402	ANP	C5'-O5'-PA-O3A
4	B	401	GOL	O1-C1-C2-O2
4	D	401	GOL	C1-C2-C3-O3
4	D	401	GOL	O1-C1-C2-O2
2	C	402	ANP	C5'-O5'-PA-O1A
2	D	402	ANP	PB-N3B-PG-O1G

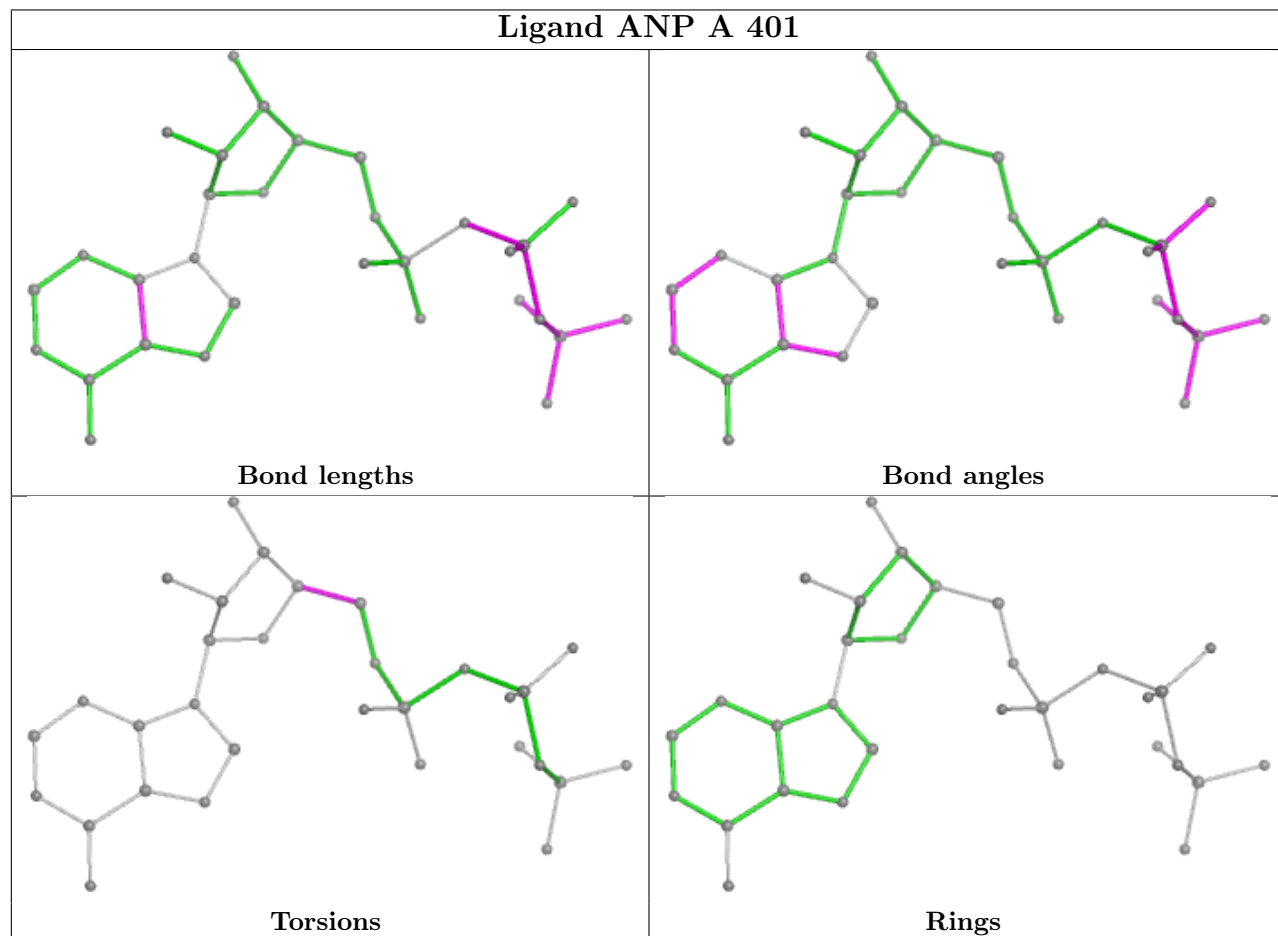
There are no ring outliers.

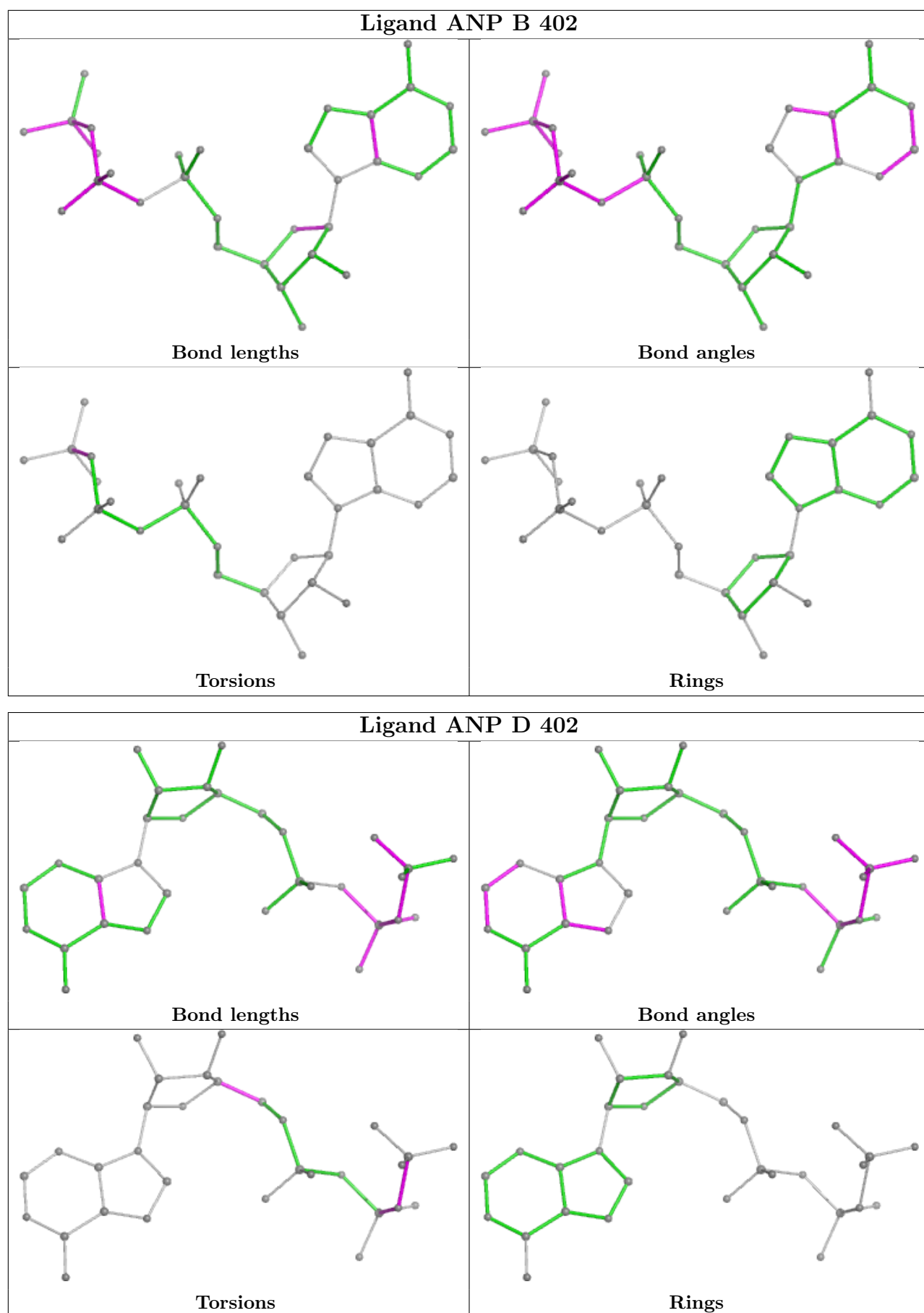
1 monomer is involved in 1 short contact:

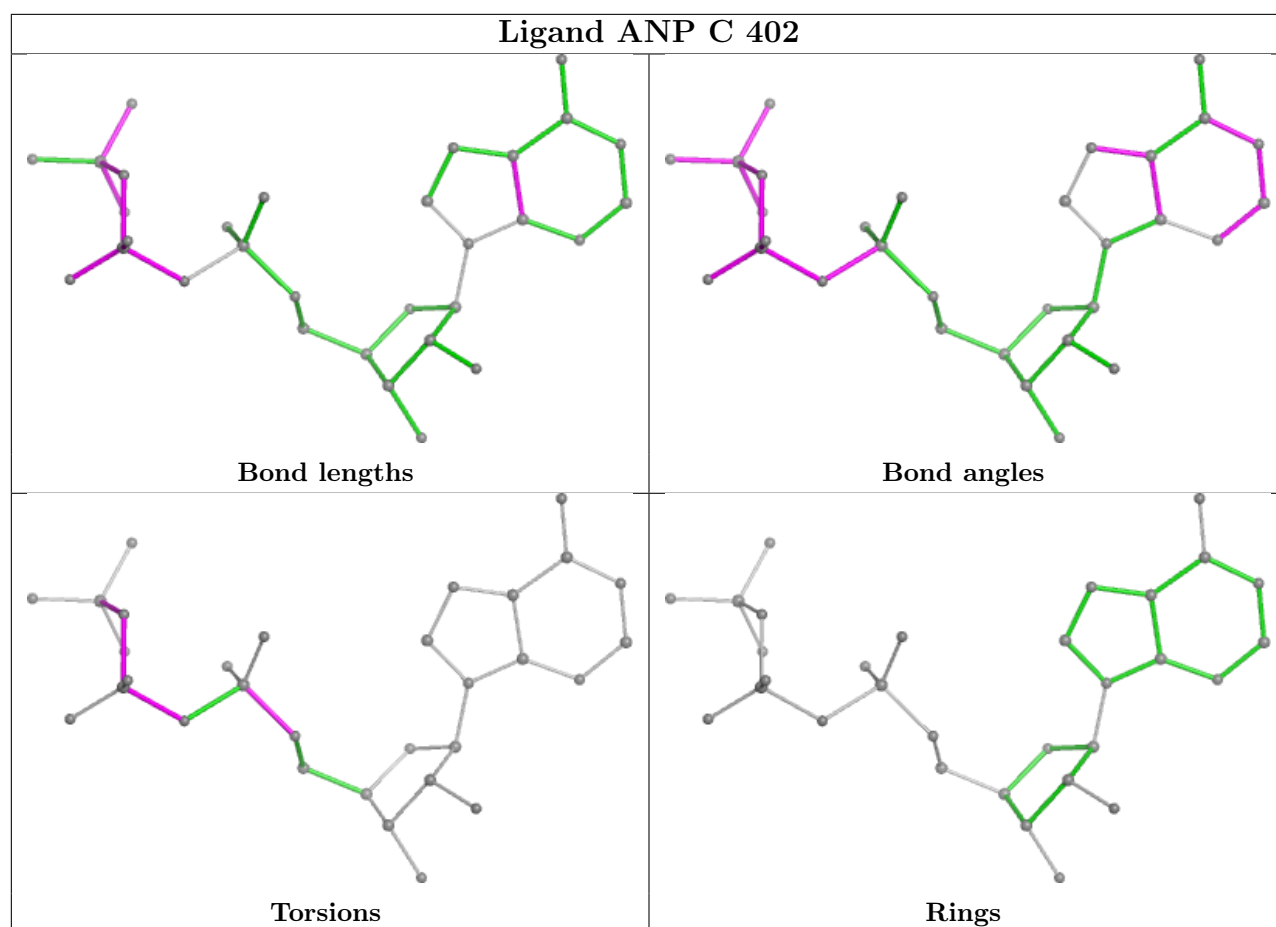
Mol	Chain	Res	Type	Clashes	Symm-Clashes
2	D	402	ANP	1	0

The following is a two-dimensional graphical depiction of Mogul quality analysis of bond lengths, bond angles, torsion angles, and ring geometry for all instances of the Ligand of Interest. In addition, ligands with molecular weight > 250 and outliers as shown on the validation Tables will also be included. For torsion angles, if less than 5% of the Mogul distribution of torsion angles is within 10 degrees of the torsion angle in question, then that torsion angle is considered an outlier. Any bond that is central to one or more torsion angles identified as an outlier by Mogul will be

highlighted in the graph. For rings, the root-mean-square deviation (RMSD) between the ring in question and similar rings identified by Mogul is calculated over all ring torsion angles. If the average RMSD is greater than 60 degrees and the minimal RMSD between the ring in question and any Mogul-identified rings is also greater than 60 degrees, then that ring is considered an outlier. The outliers are highlighted in purple. The color gray indicates Mogul did not find sufficient equivalents in the CSD to analyse the geometry.







5.7 Other polymers [i](#)

There are no such residues in this entry.

5.8 Polymer linkage issues [i](#)

There are no chain breaks in this entry.

6 Fit of model and data

6.1 Protein, DNA and RNA chains

In the following table, the column labelled ‘#RSRZ > 2’ contains the number (and percentage) of RSRZ outliers, followed by percent RSRZ outliers for the chain as percentile scores relative to all X-ray entries and entries of similar resolution. The OWAB column contains the minimum, median, 95th percentile and maximum values of the occupancy-weighted average B-factor per residue. The column labelled ‘Q < 0.9’ lists the number of (and percentage) of residues with an average occupancy less than 0.9.

Mol	Chain	Analysed	<RSRZ>	#RSRZ>2	OWAB(Å ²)	Q<0.9
1	A	301/352 (85%)	0.08	8 (2%) 54 52	25, 44, 91, 109	0
1	B	298/352 (84%)	0.06	3 (1%) 82 81	21, 43, 94, 107	0
1	C	276/352 (78%)	0.02	6 (2%) 62 60	28, 51, 98, 139	0
1	D	277/352 (78%)	-0.01	3 (1%) 80 79	26, 50, 94, 128	0
All	All	1152/1408 (81%)	0.04	20 (1%) 70 68	21, 47, 93, 139	0

All (20) RSRZ outliers are listed below:

Mol	Chain	Res	Type	RSRZ
1	C	85	SER	5.2
1	B	27	TYR	4.7
1	C	83	HIS	4.4
1	C	84	LYS	4.2
1	D	23	PHE	3.9
1	D	158	LEU	3.5
1	A	169	TYR	3.3
1	A	168	ALA	3.3
1	B	167	ARG	2.9
1	B	45	LEU	2.9
1	D	162	PHE	2.8
1	C	238	PRO	2.7
1	A	167	ARG	2.7
1	A	83	HIS	2.7
1	A	170	GLU	2.5
1	A	164	ASP	2.3
1	A	165	PRO	2.2
1	A	36	GLN	2.2
1	C	8	ARG	2.1
1	C	159	ALA	2.0

6.2 Non-standard residues in protein, DNA, RNA chains [i](#)

There are no non-standard protein/DNA/RNA residues in this entry.

6.3 Carbohydrates [i](#)

There are no monosaccharides in this entry.

6.4 Ligands [i](#)

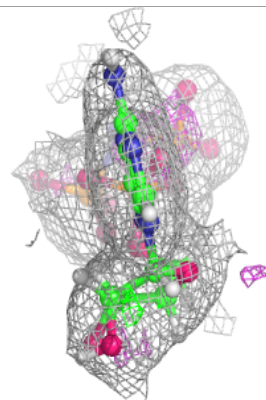
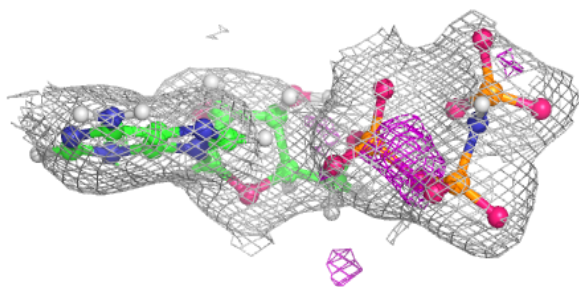
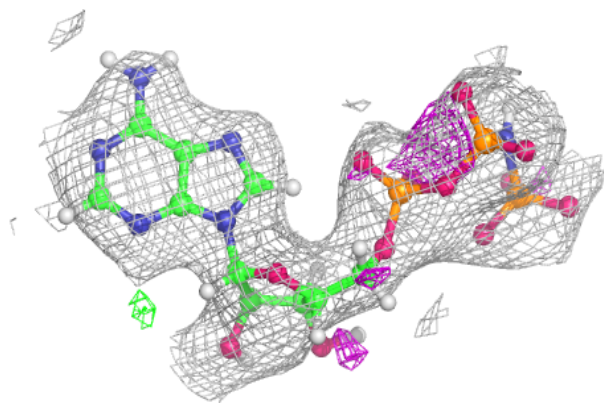
In the following table, the Atoms column lists the number of modelled atoms in the group and the number defined in the chemical component dictionary. The B-factors column lists the minimum, median, 95th percentile and maximum values of B factors of atoms in the group. The column labelled 'Q< 0.9' lists the number of atoms with occupancy less than 0.9.

Mol	Type	Chain	Res	Atoms	RSCC	RSR	B-factors(Å ²)	Q<0.9
3	MG	D	403	1/1	0.91	0.12	64,64,64,64	0
4	GOL	B	401	6/6	0.93	0.17	59,66,77,87	0
4	GOL	C	401	6/6	0.93	0.20	37,43,57,67	0
2	ANP	D	402	31/31	0.94	0.13	42,60,77,95	2
3	MG	A	402	1/1	0.95	0.12	48,48,48,48	0
3	MG	B	403	1/1	0.96	0.16	57,57,57,57	0
2	ANP	C	402	31/31	0.96	0.12	35,53,68,83	2
4	GOL	D	401	6/6	0.96	0.14	34,49,58,66	0
2	ANP	B	402	31/31	0.97	0.12	38,50,64,69	2
2	ANP	A	401	31/31	0.98	0.12	37,48,59,64	2

The following is a graphical depiction of the model fit to experimental electron density of all instances of the Ligand of Interest. In addition, ligands with molecular weight > 250 and outliers as shown on the geometry validation Tables will also be included. Each fit is shown from different orientation to approximate a three-dimensional view.

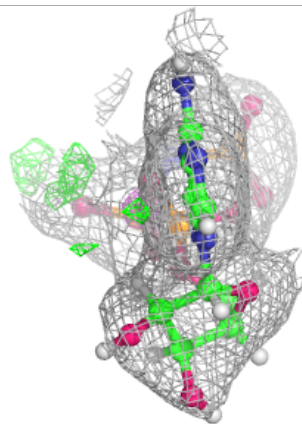
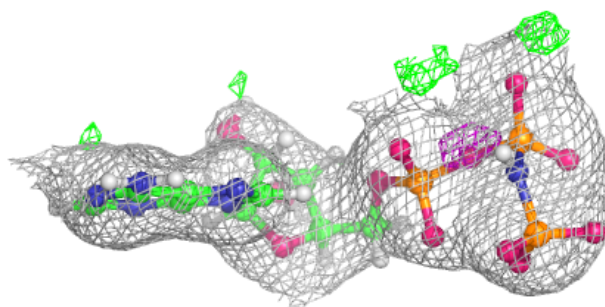
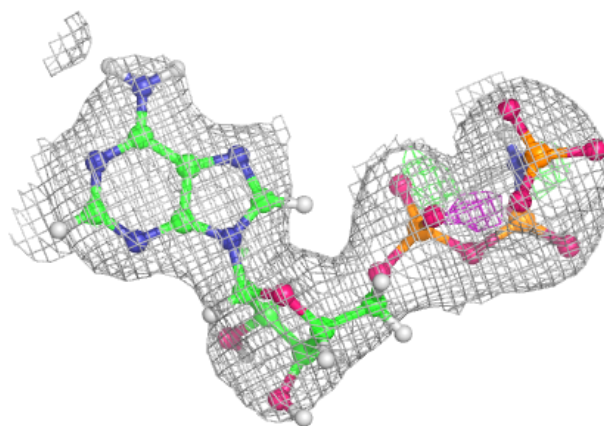
Electron density around ANP D 402:

$2mF_o-DF_c$ (at 0.7 rmsd) in gray
 mF_o-DF_c (at 3 rmsd) in purple (negative)
and green (positive)



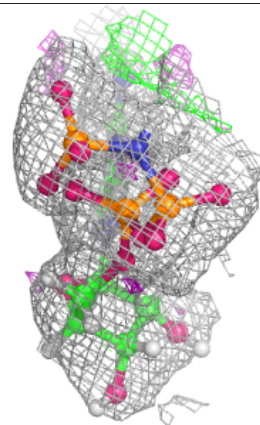
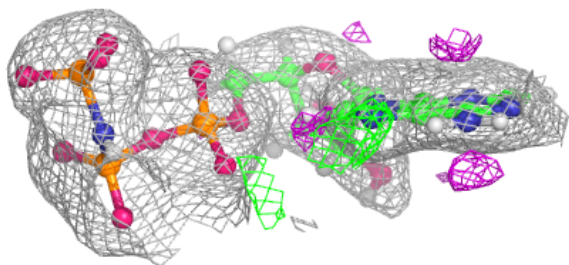
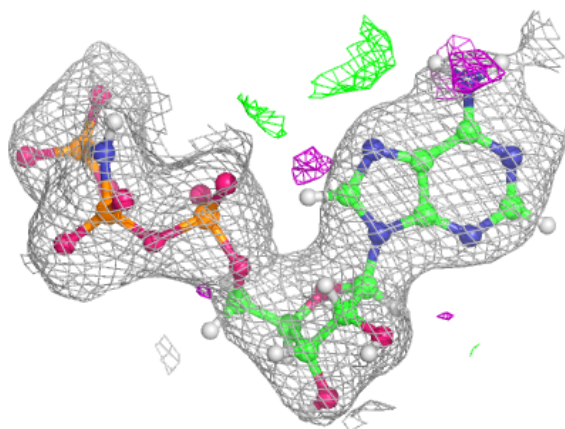
Electron density around ANP C 402:

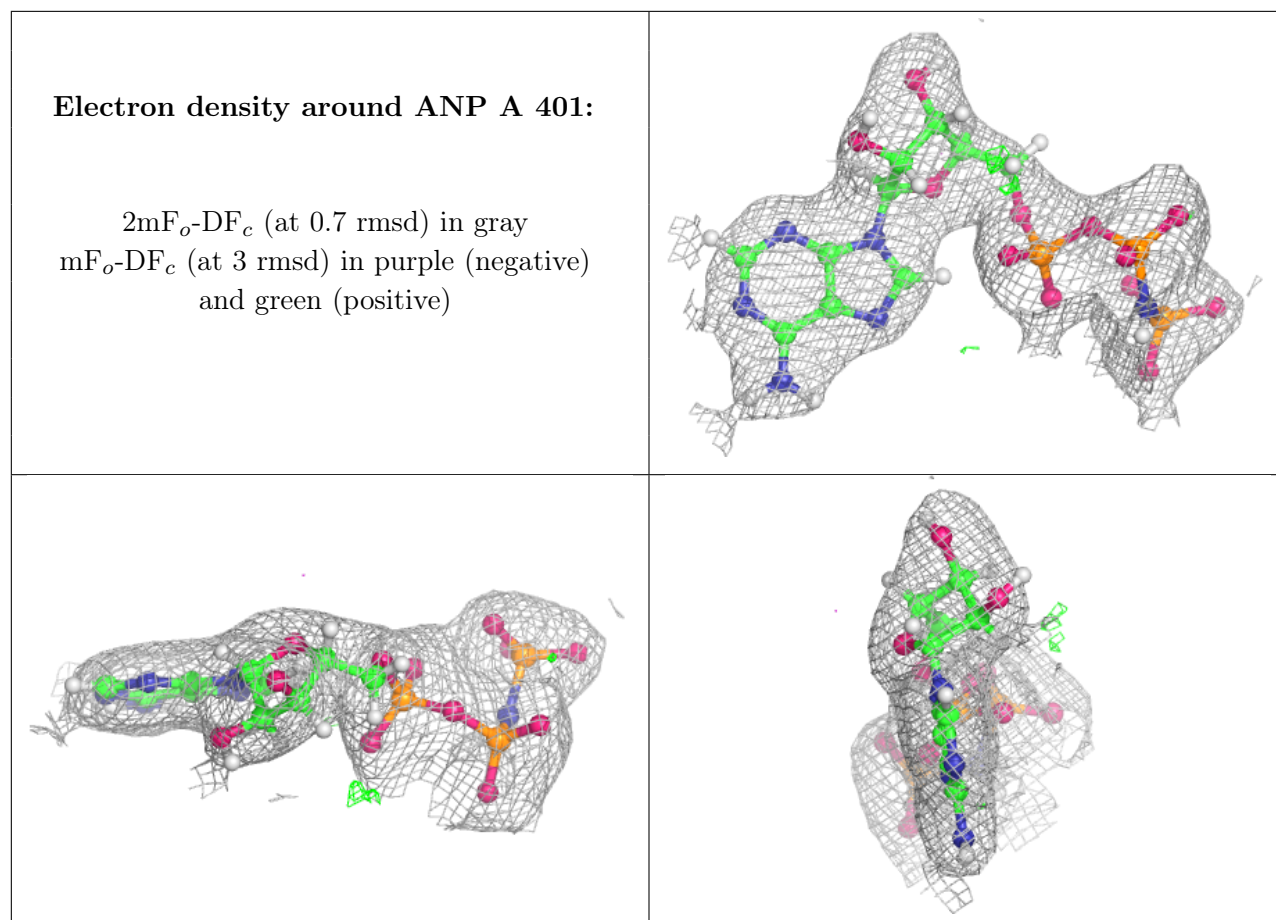
$2mF_o-DF_c$ (at 0.7 rmsd) in gray
 mF_o-DF_c (at 3 rmsd) in purple (negative)
and green (positive)



Electron density around ANP B 402:

$2mF_o-DF_c$ (at 0.7 rmsd) in gray
 mF_o-DF_c (at 3 rmsd) in purple (negative)
and green (positive)





6.5 Other polymers [\(i\)](#)

There are no such residues in this entry.