



Full wwPDB X-ray Structure Validation Report ⓘ

Oct 11, 2023 – 04:48 PM EDT

PDB ID : 7RCZ
Title : Crystal structure of *C. difficile* SpoVD in complex with ampicillin
Authors : Sacco, M.; Chen, Y.
Deposited on : 2021-07-08
Resolution : 2.20 Å(reported)

This is a Full wwPDB X-ray Structure Validation Report for a publicly released PDB entry.

We welcome your comments at validation@mail.wwpdb.org

A user guide is available at

<https://www.wwpdb.org/validation/2017/XrayValidationReportHelp>

with specific help available everywhere you see the ⓘ symbol.

The types of validation reports are described at

<http://www.wwpdb.org/validation/2017/FAQs#types>.

The following versions of software and data (see [references ⓘ](#)) were used in the production of this report:

MolProbity : 4.02b-467
Mogul : 1.8.5 (274361), CSD as541be (2020)
Xtriage (Phenix) : 1.13
EDS : 2.35.1
buster-report : 1.1.7 (2018)
Percentile statistics : 20191225.v01 (using entries in the PDB archive December 25th 2019)
Refmac : 5.8.0158
CCP4 : 7.0.044 (Gargrove)
Ideal geometry (proteins) : Engh & Huber (2001)
Ideal geometry (DNA, RNA) : Parkinson et al. (1996)
Validation Pipeline (wwPDB-VP) : 2.35.1

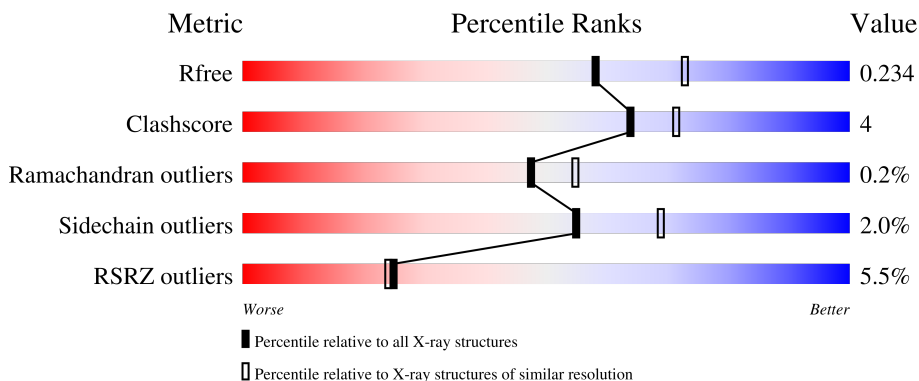
1 Overall quality at a glance

The following experimental techniques were used to determine the structure:

X-RAY DIFFRACTION

The reported resolution of this entry is 2.20 Å.

Percentile scores (ranging between 0-100) for global validation metrics of the entry are shown in the following graphic. The table shows the number of entries on which the scores are based.



Metric	Whole archive (#Entries)	Similar resolution (#Entries, resolution range(Å))
R_{free}	130704	4898 (2.20-2.20)
Clashscore	141614	5594 (2.20-2.20)
Ramachandran outliers	138981	5503 (2.20-2.20)
Sidechain outliers	138945	5504 (2.20-2.20)
RSRZ outliers	127900	4800 (2.20-2.20)

The table below summarises the geometric issues observed across the polymeric chains and their fit to the electron density. The red, orange, yellow and green segments of the lower bar indicate the fraction of residues that contain outliers for ≥ 3 , 2, 1 and 0 types of geometric quality criteria respectively. A grey segment represents the fraction of residues that are not modelled. The numeric value for each fraction is indicated below the corresponding segment, with a dot representing fractions $\leq 5\%$. The upper red bar (where present) indicates the fraction of residues that have poor fit to the electron density. The numeric value is given above the bar.

Mol	Chain	Length	Quality of chain
1	A	548	 2% 84% 10% 7%
1	B	548	 8% 83% 8% 8%

The following table lists non-polymeric compounds, carbohydrate monomers and non-standard residues in protein, DNA, RNA chains that are outliers for geometric or electron-density-fit criteria:

Mol	Type	Chain	Res	Chirality	Geometry	Clashes	Electron density
2	SO4	B	605	-	-	-	X

2 Entry composition [i](#)

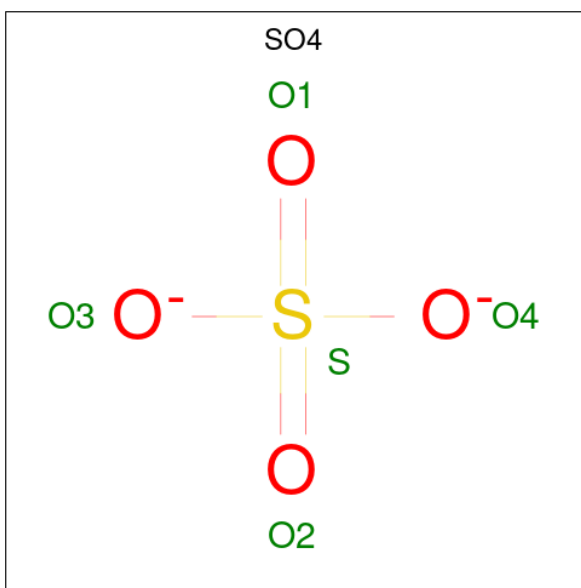
There are 8 unique types of molecules in this entry. The entry contains 8389 atoms, of which 0 are hydrogens and 0 are deuteriums.

In the tables below, the ZeroOcc column contains the number of atoms modelled with zero occupancy, the AltConf column contains the number of residues with at least one atom in alternate conformation and the Trace column contains the number of residues modelled with at most 2 atoms.

- Molecule 1 is a protein called Stage V sporulation protein D (Sporulation specific penicillin-binding protein).

Mol	Chain	Residues	Atoms					ZeroOcc	AltConf	Trace
			Total	C	N	O	S			
1	A	511	3992	2538	664	774	16	0	3	0
1	B	503	3937	2506	654	761	16	0	4	0

- Molecule 2 is SULFATE ION (three-letter code: SO4) (formula: O₄S).



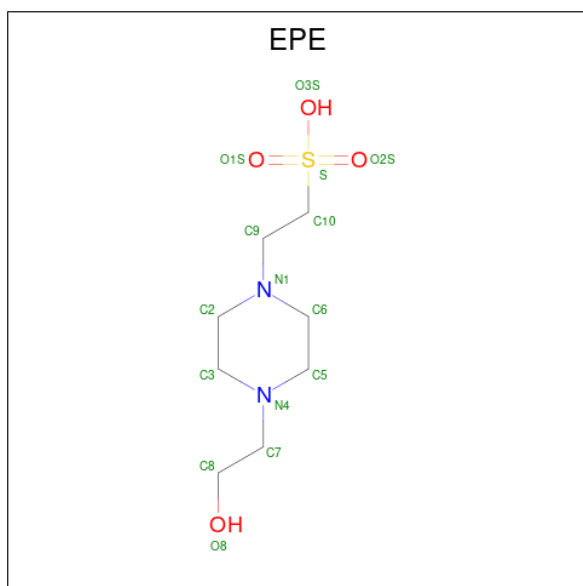
Mol	Chain	Residues	Atoms			ZeroOcc	AltConf
			Total	O	S		
2	A	1	5	4	1	0	0
2	A	1	5	4	1	0	0
2	A	1	5	4	1	0	0
2	B	1	5	4	1	0	0

Continued on next page...

Continued from previous page...

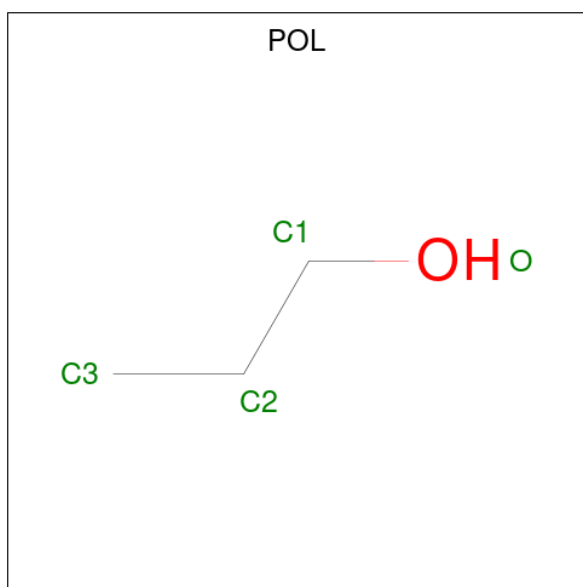
Mol	Chain	Residues	Atoms			ZeroOcc	AltConf
2	B	1	Total	O	S	0	0
			5	4	1		
2	B	1	Total	O	S	0	0
			5	4	1		
2	B	1	Total	O	S	0	0
			5	4	1		
2	B	1	Total	O	S	0	0
			5	4	1		
2	B	1	Total	O	S	0	0
			5	4	1		

- Molecule 3 is 4-(2-HYDROXYETHYL)-1-PIPERAZINE ETHANESULFONIC ACID (three-letter code: EPE) (formula: C₈H₁₈N₂O₄S).



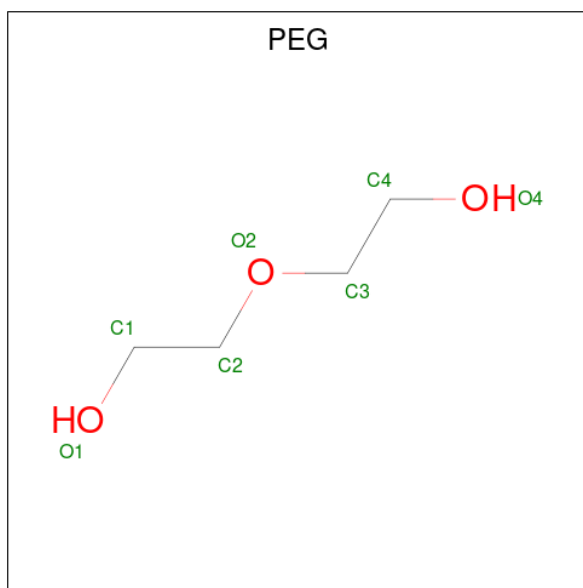
Mol	Chain	Residues	Atoms				ZeroOcc	AltConf	
3	A	1	Total	C	N	O	S	0	0
			15	8	2	4	1		
3	A	1	Total	C	N	O	S	0	0
			15	8	2	4	1		

- Molecule 4 is N-PROPANOL (three-letter code: POL) (formula: C₃H₈O).



Mol	Chain	Residues	Atoms			ZeroOcc	AltConf
4	A	1	Total	C	O	0	0
			4	3	1		

- Molecule 5 is DI(HYDROXYETHYL)ETHER (three-letter code: PEG) (formula: $C_4H_{10}O_3$).

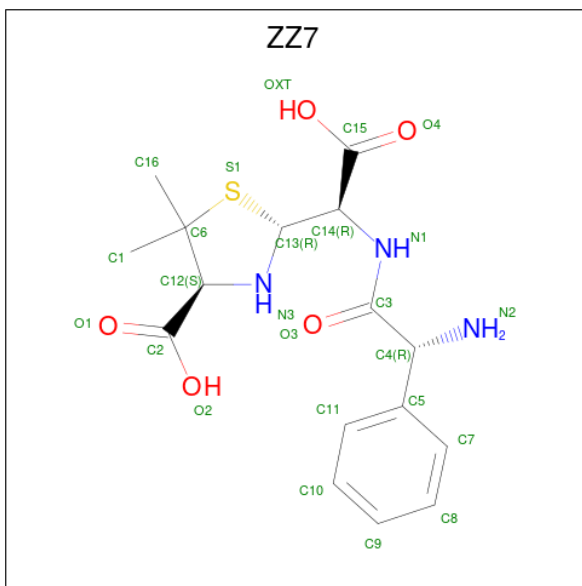


Mol	Chain	Residues	Atoms			ZeroOcc	AltConf
5	A	1	Total	C	O	0	0
			7	4	3		

- Molecule 6 is ZINC ION (three-letter code: ZN) (formula: Zn).

Mol	Chain	Residues	Atoms	ZeroOcc	AltConf
6	A	1	Total Zn 1 1	0	0
6	B	1	Total Zn 1 1	0	0

- Molecule 7 is (2R,4S)-2-[(R)-{[(2R)-2-amino-2-phenylacetyl]amino}-(carboxy)methyl]-5,5-dimethyl-1,3-thiazolidine-4-carboxylic acid (three-letter code: ZZ7) (formula: C₁₆H₂₁N₃O₅S) (labeled as "Ligand of Interest" by depositor).



Mol	Chain	Residues	Atoms	ZeroOcc	AltConf
7	A	1	Total C N O S 24 16 3 4 1	0	0
7	B	1	Total C N O S 24 16 3 4 1	0	0

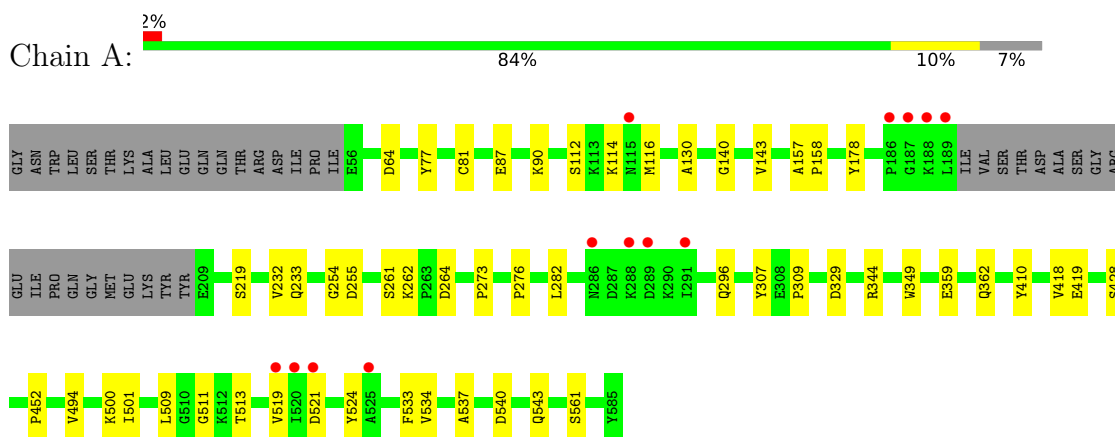
- Molecule 8 is water.

Mol	Chain	Residues	Atoms	ZeroOcc	AltConf
8	A	187	Total O 188 188	0	1
8	B	131	Total O 131 131	0	0

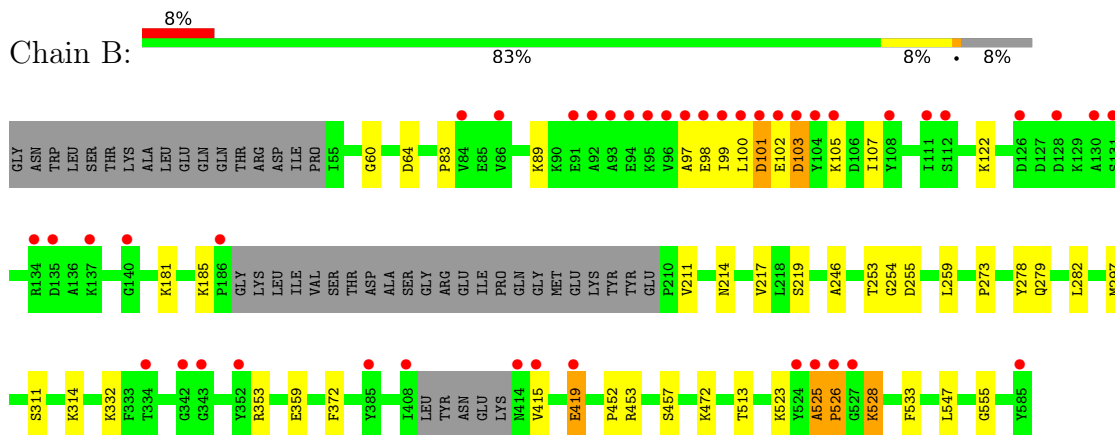
3 Residue-property plots

These plots are drawn for all protein, RNA, DNA and oligosaccharide chains in the entry. The first graphic for a chain summarises the proportions of the various outlier classes displayed in the second graphic. The second graphic shows the sequence view annotated by issues in geometry and electron density. Residues are color-coded according to the number of geometric quality criteria for which they contain at least one outlier: green = 0, yellow = 1, orange = 2 and red = 3 or more. A red dot above a residue indicates a poor fit to the electron density ($RSRZ > 2$). Stretches of 2 or more consecutive residues without any outlier are shown as a green connector. Residues present in the sample, but not in the model, are shown in grey.

- Molecule 1: Stage V sporulation protein D (Sporulation specific penicillin-binding protein)



- Molecule 1: Stage V sporulation protein D (Sporulation specific penicillin-binding protein)



4 Data and refinement statistics

Property	Value	Source
Space group	P 21 21 21	Depositor
Cell constants a, b, c, α , β , γ	76.64Å 95.62Å 176.77Å 90.00° 90.00° 90.00°	Depositor
Resolution (Å)	49.58 – 2.20 49.53 – 2.20	Depositor EDS
% Data completeness (in resolution range)	93.5 (49.58-2.20) 93.5 (49.53-2.20)	Depositor EDS
R_{merge}	0.10	Depositor
R_{sym}	(Not available)	Depositor
$\langle I/\sigma(I) \rangle$ ¹	2.40 (at 2.20Å)	Xtrriage
Refinement program	REFMAC 5.8.0258	Depositor
R, R_{free}	0.187 , 0.225 0.196 , 0.234	Depositor DCC
R_{free} test set	3195 reflections (5.12%)	wwPDB-VP
Wilson B-factor (Å ²)	30.3	Xtrriage
Anisotropy	0.563	Xtrriage
Bulk solvent k_{sol} (e/Å ³), B_{sol} (Å ²)	0.32 , 41.1	EDS
L-test for twinning ²	$\langle L \rangle = 0.49$, $\langle L^2 \rangle = 0.32$	Xtrriage
Estimated twinning fraction	No twinning to report.	Xtrriage
F_o, F_c correlation	0.95	EDS
Total number of atoms	8389	wwPDB-VP
Average B, all atoms (Å ²)	44.0	wwPDB-VP

Xtrriage's analysis on translational NCS is as follows: *The largest off-origin peak in the Patterson function is 14.58% of the height of the origin peak. No significant pseudotranslation is detected.*

¹Intensities estimated from amplitudes.

²Theoretical values of $\langle |L| \rangle$, $\langle L^2 \rangle$ for acentric reflections are 0.5, 0.333 respectively for untwinned datasets, and 0.375, 0.2 for perfectly twinned datasets.

5 Model quality [i](#)

5.1 Standard geometry [i](#)

Bond lengths and bond angles in the following residue types are not validated in this section: ZN, POL, PEG, SO4, EPE, ZZ7

The Z score for a bond length (or angle) is the number of standard deviations the observed value is removed from the expected value. A bond length (or angle) with $|Z| > 5$ is considered an outlier worth inspection. RMSZ is the root-mean-square of all Z scores of the bond lengths (or angles).

Mol	Chain	Bond lengths		Bond angles	
		RMSZ	# Z >5	RMSZ	# Z >5
1	A	0.69	0/4070	0.83	0/5501
1	B	0.70	0/4014	0.82	0/5424
All	All	0.70	0/8084	0.82	0/10925

There are no bond length outliers.

There are no bond angle outliers.

There are no chirality outliers.

There are no planarity outliers.

5.2 Too-close contacts [i](#)

In the following table, the Non-H and H(model) columns list the number of non-hydrogen atoms and hydrogen atoms in the chain respectively. The H(added) column lists the number of hydrogen atoms added and optimized by MolProbity. The Clashes column lists the number of clashes within the asymmetric unit, whereas Symm-Clashes lists symmetry-related clashes.

Mol	Chain	Non-H	H(model)	H(added)	Clashes	Symm-Clashes
1	A	3992	0	4024	33	0
1	B	3937	0	3959	35	0
2	A	15	0	0	1	0
2	B	35	0	0	1	0
3	A	30	0	36	3	0
4	A	4	0	8	0	0
5	A	7	0	10	3	0
6	A	1	0	0	0	0
6	B	1	0	0	0	0
7	A	24	0	19	1	0
7	B	24	0	19	1	0

Continued on next page...

Continued from previous page...

Mol	Chain	Non-H	H(model)	H(added)	Clashes	Symm-Clashes
8	A	188	0	0	1	0
8	B	131	0	0	0	0
All	All	8389	0	8075	68	0

The all-atom clashscore is defined as the number of clashes found per 1000 atoms (including hydrogen atoms). The all-atom clashscore for this structure is 4.

All (68) close contacts within the same asymmetric unit are listed below, sorted by their clash magnitude.

Atom-1	Atom-2	Interatomic distance (Å)	Clash overlap (Å)
1:A:344[B]:ARG:HH21	1:A:344[B]:ARG:HB3	1.22	1.02
1:B:525:ALA:HB1	1:B:526:PRO:CD	2.06	0.86
1:B:525:ALA:HB1	1:B:526:PRO:HD3	1.57	0.84
1:A:344[B]:ARG:HB3	1:A:344[B]:ARG:NH2	1.94	0.82
1:A:344[B]:ARG:HH21	1:A:344[B]:ARG:CB	1.91	0.81
1:B:415:VAL:HB	1:B:419:GLU:HB2	1.71	0.72
1:B:102:GLU:HA	1:B:102:GLU:OE1	1.90	0.71
1:A:543:GLN:HE22	5:A:805:PEG:H42	1.56	0.71
1:B:314:LYS:HE3	1:B:372:PHE:CD2	2.27	0.70
1:B:97:ALA:O	1:B:102:GLU:N	2.25	0.68
1:B:273:PRO:HG3	1:B:282:LEU:HD12	1.80	0.64
1:B:253:THR:O	1:B:453[A]:ARG:NH1	2.30	0.64
8:A:1046:HOH:O	1:B:555:GLY:HA2	2.01	0.61
1:A:112:SER:O	1:A:114:LYS:HD3	2.03	0.58
1:B:273:PRO:CG	1:B:282:LEU:HD12	2.34	0.57
1:B:525:ALA:CB	1:B:526:PRO:CD	2.81	0.57
1:B:83:PRO:O	1:B:89:LYS:NZ	2.37	0.56
1:B:100:LEU:HD12	1:B:122:LYS:CD	2.36	0.56
1:A:233:GLN:HE22	3:A:803:EPE:H61	1.72	0.55
1:B:311:SER:HB3	1:B:314:LYS:HD2	1.88	0.54
1:A:543:GLN:HE22	5:A:805:PEG:C4	2.21	0.54
1:A:276:PRO:HD2	3:A:803:EPE:H32	1.90	0.53
1:A:261:SER:O	1:A:264:ASP:HB3	2.10	0.52
1:A:410:TYR:HE2	1:A:428:SER:HB3	1.74	0.52
1:A:519:VAL:HG22	1:A:524:TYR:CE1	2.45	0.52
1:A:178:TYR:CE2	3:A:806:EPE:H21	2.44	0.51
1:B:100:LEU:HD12	1:B:122:LYS:HD2	1.92	0.50
1:A:509:LEU:HD13	1:A:537:ALA:HB2	1.94	0.50
1:B:185:LYS:HB2	1:B:211:VAL:HB	1.93	0.49
1:B:259:LEU:C	1:B:259:LEU:HD23	2.33	0.49
1:A:157:ALA:N	1:A:158:PRO:CD	2.75	0.49

Continued on next page...

Continued from previous page...

Atom-1	Atom-2	Interatomic distance (Å)	Clash overlap (Å)
1:B:311:SER:N	7:B:609:ZZ7:O4	2.44	0.49
1:B:60:GLY:HA3	1:B:214:ASN:O	2.14	0.48
1:B:99:ILE:HG22	1:B:100:LEU:HD22	1.95	0.47
1:A:81:CYS:HA	1:A:140:GLY:O	2.14	0.47
1:A:410:TYR:CE2	1:A:428:SER:HB3	2.50	0.47
1:A:130:ALA:HB1	1:A:143:VAL:HG11	1.97	0.47
1:A:349:TRP:HB3	7:A:809:ZZ7:S1	2.54	0.47
1:B:254:GLY:O	1:B:452:PRO:HA	2.14	0.46
1:A:501:ILE:HG21	1:A:561:SER:O	2.16	0.46
1:A:77:TYR:HB3	1:A:143:VAL:HG13	1.98	0.45
1:B:332:LYS:HE2	1:B:359:GLU:HG2	1.98	0.45
1:B:246:ALA:HA	1:B:547:LEU:O	2.17	0.45
1:A:344[A]:ARG:HD2	1:A:418:VAL:HG21	1.98	0.45
1:A:296:GLN:NE2	2:A:802:SO4:O4	2.50	0.44
1:B:513:THR:HG22	1:B:533:PHE:CD2	2.51	0.44
1:A:307:TYR:CE2	1:A:309:PRO:HA	2.53	0.44
1:B:525:ALA:CB	1:B:526:PRO:HD3	2.35	0.44
1:A:219:SER:HB2	1:A:255:ASP:HB3	1.99	0.44
1:B:103:ASP:C	1:B:105:LYS:H	2.21	0.44
1:B:217:VAL:HB	1:B:457:SER:HB2	2.00	0.44
1:A:511:GLY:HA3	1:A:534:VAL:O	2.18	0.43
1:B:273:PRO:HG3	1:B:282:LEU:CD1	2.47	0.43
1:B:314:LYS:HE3	1:B:372:PHE:CE2	2.53	0.43
1:B:98:GLU:O	1:B:101:ASP:N	2.49	0.43
1:A:232:VAL:HG12	1:A:262:LYS:HG2	2.01	0.43
1:A:513:THR:HG22	1:A:533:PHE:CD2	2.54	0.43
1:B:525:ALA:HB3	1:B:528:LYS:HB2	2.00	0.42
1:A:273:PRO:HG3	1:A:282:LEU:HD12	2.01	0.42
1:B:102:GLU:CB	1:B:107:ILE:HD11	2.50	0.41
1:A:359:GLU:HB2	1:A:362[A]:GLN:OE1	2.20	0.41
1:A:494:VAL:O	1:A:500:LYS:HA	2.20	0.41
1:B:219:SER:HB2	1:B:255:ASP:HB3	2.02	0.41
1:B:278:TYR:CE1	1:B:297:MET:HA	2.55	0.41
1:A:254:GLY:O	1:A:452:PRO:HA	2.21	0.41
1:A:543:GLN:NE2	5:A:805:PEG:H42	2.31	0.40
1:A:282:LEU:HD23	1:A:282:LEU:HA	1.94	0.40
1:B:181:LYS:HG3	2:B:604:SO4:O4	2.21	0.40

There are no symmetry-related clashes.

5.3 Torsion angles [i](#)

5.3.1 Protein backbone [i](#)

In the following table, the Percentiles column shows the percent Ramachandran outliers of the chain as a percentile score with respect to all X-ray entries followed by that with respect to entries of similar resolution.

The Analysed column shows the number of residues for which the backbone conformation was analysed, and the total number of residues.

Mol	Chain	Analysed	Favoured	Allowed	Outliers	Percentiles	
1	A	510/548 (93%)	496 (97%)	14 (3%)	0	100	100
1	B	500/548 (91%)	483 (97%)	15 (3%)	2 (0%)	34	37
All	All	1010/1096 (92%)	979 (97%)	29 (3%)	2 (0%)	47	55

All (2) Ramachandran outliers are listed below:

Mol	Chain	Res	Type
1	B	526	PRO
1	B	525	ALA

5.3.2 Protein sidechains [i](#)

In the following table, the Percentiles column shows the percent sidechain outliers of the chain as a percentile score with respect to all X-ray entries followed by that with respect to entries of similar resolution.

The Analysed column shows the number of residues for which the sidechain conformation was analysed, and the total number of residues.

Mol	Chain	Analysed	Rotameric	Outliers	Percentiles	
1	A	436/465 (94%)	428 (98%)	8 (2%)	59	72
1	B	429/465 (92%)	420 (98%)	9 (2%)	53	67
All	All	865/930 (93%)	848 (98%)	17 (2%)	55	69

All (17) residues with a non-rotameric sidechain are listed below:

Mol	Chain	Res	Type
1	A	64	ASP
1	A	87	GLU
1	A	90	LYS
1	A	116	MET

Continued on next page...

Continued from previous page...

Mol	Chain	Res	Type
1	A	329	ASP
1	A	419	GLU
1	A	521	ASP
1	A	540	ASP
1	B	64	ASP
1	B	101	ASP
1	B	103	ASP
1	B	279	GLN
1	B	353	ARG
1	B	419	GLU
1	B	472	LYS
1	B	523	LYS
1	B	528	LYS

Sometimes sidechains can be flipped to improve hydrogen bonding and reduce clashes. All (1) such sidechains are listed below:

Mol	Chain	Res	Type
1	B	427	GLN

5.3.3 RNA [i](#)

There are no RNA molecules in this entry.

5.4 Non-standard residues in protein, DNA, RNA chains [i](#)

There are no non-standard protein/DNA/RNA residues in this entry.

5.5 Carbohydrates [i](#)

There are no monosaccharides in this entry.

5.6 Ligand geometry [i](#)

Of 18 ligands modelled in this entry, 2 are monoatomic - leaving 16 for Mogul analysis.

In the following table, the Counts columns list the number of bonds (or angles) for which Mogul statistics could be retrieved, the number of bonds (or angles) that are observed in the model and the number of bonds (or angles) that are defined in the Chemical Component Dictionary. The Link column lists molecule types, if any, to which the group is linked. The Z score for a bond

length (or angle) is the number of standard deviations the observed value is removed from the expected value. A bond length (or angle) with $|Z| > 2$ is considered an outlier worth inspection. RMSZ is the root-mean-square of all Z scores of the bond lengths (or angles).

Mol	Type	Chain	Res	Link	Bond lengths			Bond angles		
					Counts	RMSZ	# Z > 2	Counts	RMSZ	# Z > 2
3	EPE	A	806	-	15,15,15	1.94	1 (6%)	18,20,20	1.22	1 (5%)
2	SO4	B	607	-	4,4,4	0.72	0	6,6,6	0.16	0
2	SO4	B	602	-	4,4,4	0.36	0	6,6,6	0.11	0
2	SO4	A	801	-	4,4,4	0.34	0	6,6,6	0.15	0
2	SO4	B	606	-	4,4,4	0.34	0	6,6,6	0.09	0
2	SO4	A	802	-	4,4,4	0.37	0	6,6,6	0.08	0
7	ZZ7	A	809	1	18,25,26	2.81	8 (44%)	22,36,38	1.77	3 (13%)
2	SO4	B	605	-	4,4,4	0.36	0	6,6,6	0.06	0
2	SO4	B	604	-	4,4,4	0.37	0	6,6,6	0.15	0
3	EPE	A	803	-	15,15,15	1.96	1 (6%)	18,20,20	1.74	5 (27%)
2	SO4	B	601	-	4,4,4	0.36	0	6,6,6	0.09	0
4	POL	A	804	-	3,3,3	0.23	0	2,2,2	0.08	0
5	PEG	A	805	-	6,6,6	0.39	0	5,5,5	0.35	0
7	ZZ7	B	609	1	18,25,26	2.93	8 (44%)	22,36,38	1.85	5 (22%)
2	SO4	A	807	-	4,4,4	0.27	0	6,6,6	0.07	0
2	SO4	B	603	-	4,4,4	0.33	0	6,6,6	0.05	0

In the following table, the Chirals column lists the number of chiral outliers, the number of chiral centers analysed, the number of these observed in the model and the number defined in the Chemical Component Dictionary. Similar counts are reported in the Torsion and Rings columns. '-' means no outliers of that kind were identified.

Mol	Type	Chain	Res	Link	Chirals	Torsions	Rings
3	EPE	A	806	-	-	5/9/19/19	0/1/1/1
7	ZZ7	A	809	1	-	0/16/37/39	0/2/2/2
5	PEG	A	805	-	-	4/4/4/4	-
3	EPE	A	803	-	-	7/9/19/19	0/1/1/1
4	POL	A	804	-	-	0/1/1/1	-
7	ZZ7	B	609	1	-	0/16/37/39	0/2/2/2

All (18) bond length outliers are listed below:

Mol	Chain	Res	Type	Atoms	Z	Observed(Å)	Ideal(Å)
3	A	806	EPE	C10-S	-6.79	1.67	1.77
3	A	803	EPE	C10-S	-6.62	1.68	1.77
7	B	609	ZZ7	C12-N3	6.52	1.60	1.46
7	B	609	ZZ7	C5-C4	6.52	1.60	1.52

Continued on next page...

Continued from previous page...

Mol	Chain	Res	Type	Atoms	Z	Observed(Å)	Ideal(Å)
7	A	809	ZZ7	C12-N3	6.07	1.59	1.46
7	A	809	ZZ7	C5-C4	5.72	1.59	1.52
7	B	609	ZZ7	C3-N1	4.26	1.43	1.34
7	A	809	ZZ7	C3-N1	3.74	1.42	1.34
7	A	809	ZZ7	C6-S1	3.51	1.92	1.85
7	B	609	ZZ7	C7-C5	3.07	1.44	1.39
7	A	809	ZZ7	C11-C5	3.02	1.43	1.39
7	B	609	ZZ7	C11-C5	2.93	1.43	1.39
7	B	609	ZZ7	C14-N1	2.68	1.50	1.46
7	A	809	ZZ7	C7-C5	2.67	1.43	1.39
7	A	809	ZZ7	C14-N1	2.38	1.49	1.46
7	B	609	ZZ7	C9-C8	2.09	1.43	1.38
7	B	609	ZZ7	C10-C11	2.04	1.43	1.38
7	A	809	ZZ7	C8-C7	2.02	1.43	1.38

All (14) bond angle outliers are listed below:

Mol	Chain	Res	Type	Atoms	Z	Observed(°)	Ideal(°)
7	B	609	ZZ7	C4-C3-N1	5.58	121.58	114.78
7	A	809	ZZ7	C4-C3-N1	5.11	121.00	114.78
3	A	803	EPE	O2S-S-C10	4.40	112.21	106.92
7	A	809	ZZ7	C13-C14-N1	3.86	118.40	109.98
7	B	609	ZZ7	O3-C3-C4	-3.10	116.91	120.99
7	B	609	ZZ7	C6-S1-C13	2.80	99.99	93.99
7	B	609	ZZ7	C12-C6-S1	-2.71	98.44	103.81
7	B	609	ZZ7	C13-C14-N1	2.61	115.66	109.98
7	A	809	ZZ7	O3-C3-N1	-2.54	118.22	122.93
3	A	806	EPE	C6-C5-N4	2.48	115.73	110.64
3	A	803	EPE	C3-C2-N1	-2.44	105.63	110.64
3	A	803	EPE	O8-C8-C7	2.35	120.92	111.19
3	A	803	EPE	C6-C5-N4	2.04	114.82	110.64
3	A	803	EPE	O3S-S-C10	2.02	109.03	105.77

There are no chirality outliers.

All (16) torsion outliers are listed below:

Mol	Chain	Res	Type	Atoms
3	A	803	EPE	S-C10-C9-N1
3	A	803	EPE	C9-C10-S-O3S
3	A	806	EPE	C8-C7-N4-C3
5	A	805	PEG	C4-C3-O2-C2
5	A	805	PEG	O1-C1-C2-O2

Continued on next page...

Continued from previous page...

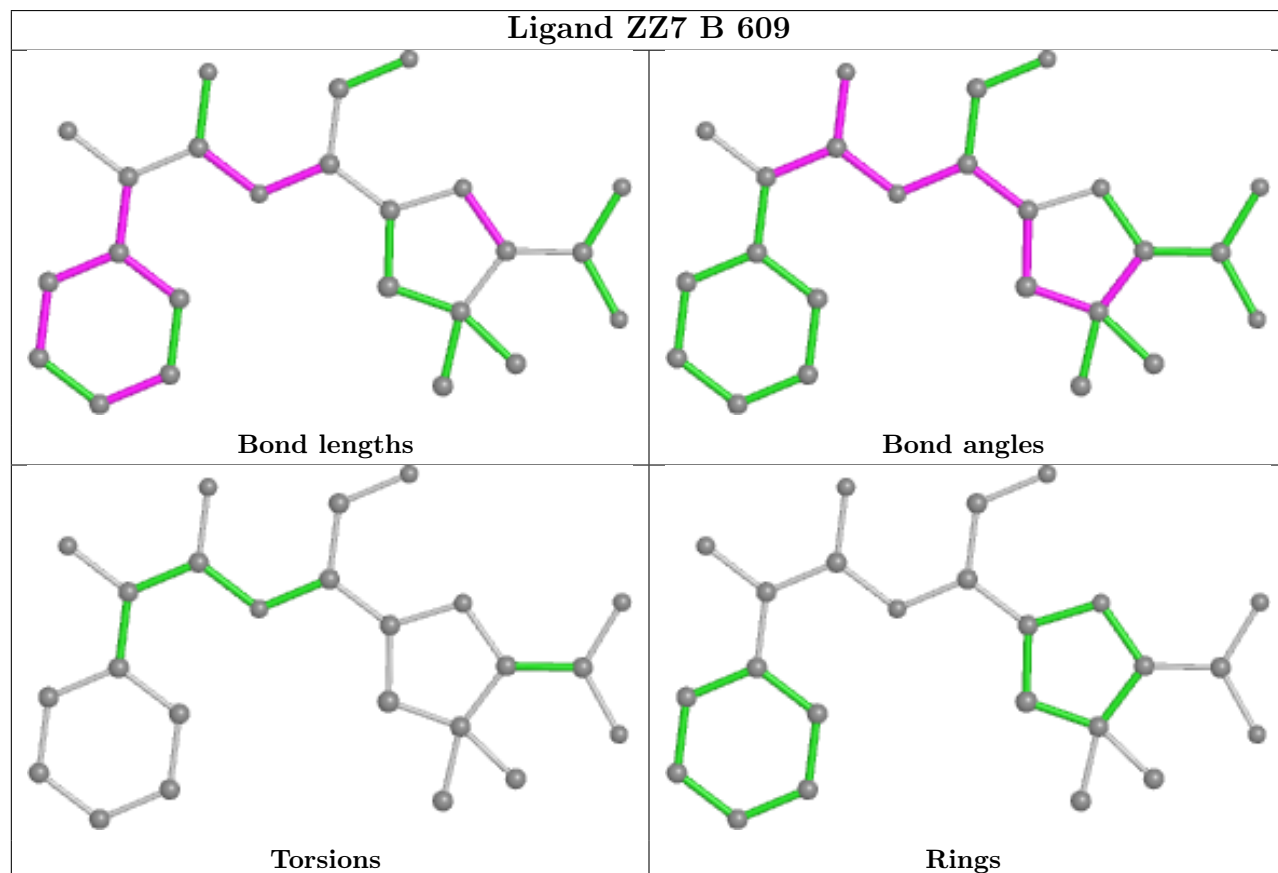
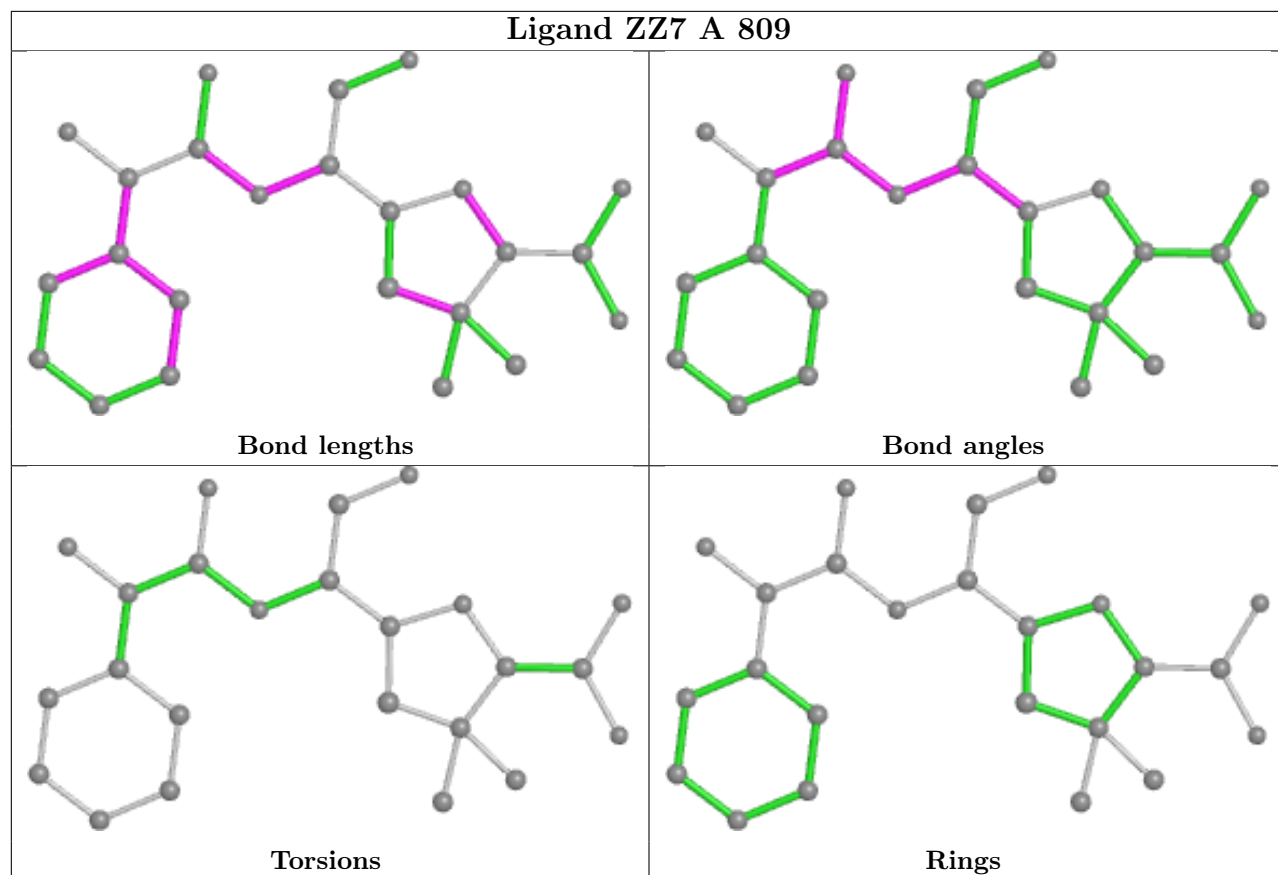
Mol	Chain	Res	Type	Atoms
3	A	806	EPE	N4-C7-C8-O8
3	A	806	EPE	C9-C10-S-O3S
5	A	805	PEG	O2-C3-C4-O4
3	A	803	EPE	C10-C9-N1-C2
3	A	803	EPE	N4-C7-C8-O8
3	A	803	EPE	C9-C10-S-O1S
3	A	803	EPE	C9-C10-S-O2S
3	A	806	EPE	C9-C10-S-O1S
3	A	806	EPE	C9-C10-S-O2S
5	A	805	PEG	C1-C2-O2-C3
3	A	803	EPE	C10-C9-N1-C6

There are no ring outliers.

7 monomers are involved in 10 short contacts:

Mol	Chain	Res	Type	Clashes	Symm-Clashes
3	A	806	EPE	1	0
2	A	802	SO4	1	0
7	A	809	ZZ7	1	0
2	B	604	SO4	1	0
3	A	803	EPE	2	0
5	A	805	PEG	3	0
7	B	609	ZZ7	1	0

The following is a two-dimensional graphical depiction of Mogul quality analysis of bond lengths, bond angles, torsion angles, and ring geometry for all instances of the Ligand of Interest. In addition, ligands with molecular weight > 250 and outliers as shown on the validation Tables will also be included. For torsion angles, if less than 5% of the Mogul distribution of torsion angles is within 10 degrees of the torsion angle in question, then that torsion angle is considered an outlier. Any bond that is central to one or more torsion angles identified as an outlier by Mogul will be highlighted in the graph. For rings, the root-mean-square deviation (RMSD) between the ring in question and similar rings identified by Mogul is calculated over all ring torsion angles. If the average RMSD is greater than 60 degrees and the minimal RMSD between the ring in question and any Mogul-identified rings is also greater than 60 degrees, then that ring is considered an outlier. The outliers are highlighted in purple. The color gray indicates Mogul did not find sufficient equivalents in the CSD to analyse the geometry.



5.7 Other polymers [i](#)

There are no such residues in this entry.

5.8 Polymer linkage issues [i](#)

There are no chain breaks in this entry.

6 Fit of model and data [i](#)

6.1 Protein, DNA and RNA chains [i](#)

In the following table, the column labelled ‘#RSRZ > 2’ contains the number (and percentage) of RSRZ outliers, followed by percent RSRZ outliers for the chain as percentile scores relative to all X-ray entries and entries of similar resolution. The OWAB column contains the minimum, median, 95th percentile and maximum values of the occupancy-weighted average B-factor per residue. The column labelled ‘Q < 0.9’ lists the number of (and percentage) of residues with an average occupancy less than 0.9.

Mol	Chain	Analysed	<RSRZ>	#RSRZ>2	OWAB(Å ²)	Q<0.9
1	A	511/548 (93%)	-0.17	13 (2%) 57 55	15, 33, 72, 113	0
1	B	503/548 (91%)	0.13	43 (8%) 10 9	21, 40, 104, 131	0
All	All	1014/1096 (92%)	-0.02	56 (5%) 25 24	15, 36, 95, 131	0

All (56) RSRZ outliers are listed below:

Mol	Chain	Res	Type	RSRZ
1	B	92	ALA	6.3
1	B	104	TYR	6.1
1	B	103	ASP	5.7
1	A	188	LYS	5.7
1	A	189	LEU	5.7
1	B	415	VAL	5.6
1	B	342	GLY	5.2
1	B	526	PRO	5.0
1	B	100	LEU	4.9
1	A	286	ASN	4.8
1	B	343	GLY	4.7
1	B	86	VAL	4.6
1	B	101	ASP	4.5
1	B	108	TYR	4.3
1	B	95	LYS	4.2
1	B	525	ALA	4.2
1	B	128	ASP	3.9
1	B	94	GLU	3.8
1	B	98	GLU	3.8
1	B	140	GLY	3.7
1	A	521	ASP	3.5
1	B	126	ASP	3.5
1	B	102	GLU	3.4
1	B	186	PRO	3.4

Continued on next page...

Continued from previous page...

Mol	Chain	Res	Type	RSRZ
1	B	84	VAL	3.4
1	B	131	SER	3.3
1	B	96	VAL	3.2
1	A	187	GLY	3.1
1	B	111	ILE	3.0
1	B	385[A]	TYR	3.0
1	B	352	TYR	2.9
1	A	520	ILE	2.8
1	A	186	PRO	2.8
1	B	524	TYR	2.7
1	B	97	ALA	2.7
1	B	527	GLY	2.7
1	B	408	ILE	2.6
1	A	288	LYS	2.6
1	A	525	ALA	2.6
1	B	93	ALA	2.5
1	A	291	ILE	2.5
1	B	105	LYS	2.5
1	B	135	ASP	2.5
1	B	99	ILE	2.4
1	A	519	VAL	2.4
1	B	414	ASN	2.3
1	B	585[A]	TYR	2.3
1	B	419	GLU	2.2
1	B	112	SER	2.2
1	B	137	LYS	2.2
1	A	289	ASP	2.2
1	B	130	ALA	2.1
1	B	91	GLU	2.1
1	A	115	ASN	2.1
1	B	334	THR	2.0
1	B	134	ARG	2.0

6.2 Non-standard residues in protein, DNA, RNA chains [i](#)

There are no non-standard protein/DNA/RNA residues in this entry.

6.3 Carbohydrates [i](#)

There are no monosaccharides in this entry.

6.4 Ligands [i](#)

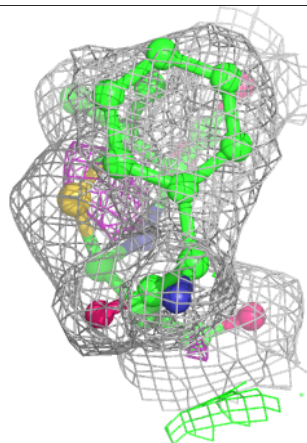
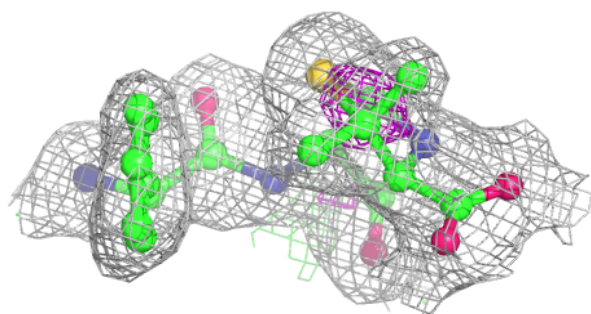
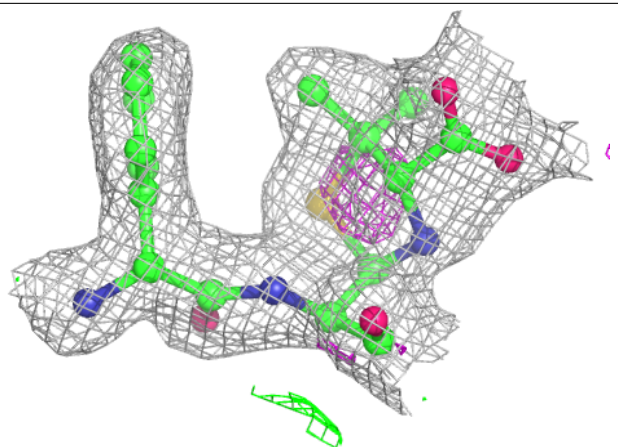
In the following table, the Atoms column lists the number of modelled atoms in the group and the number defined in the chemical component dictionary. The B-factors column lists the minimum, median, 95th percentile and maximum values of B factors of atoms in the group. The column labelled 'Q< 0.9' lists the number of atoms with occupancy less than 0.9.

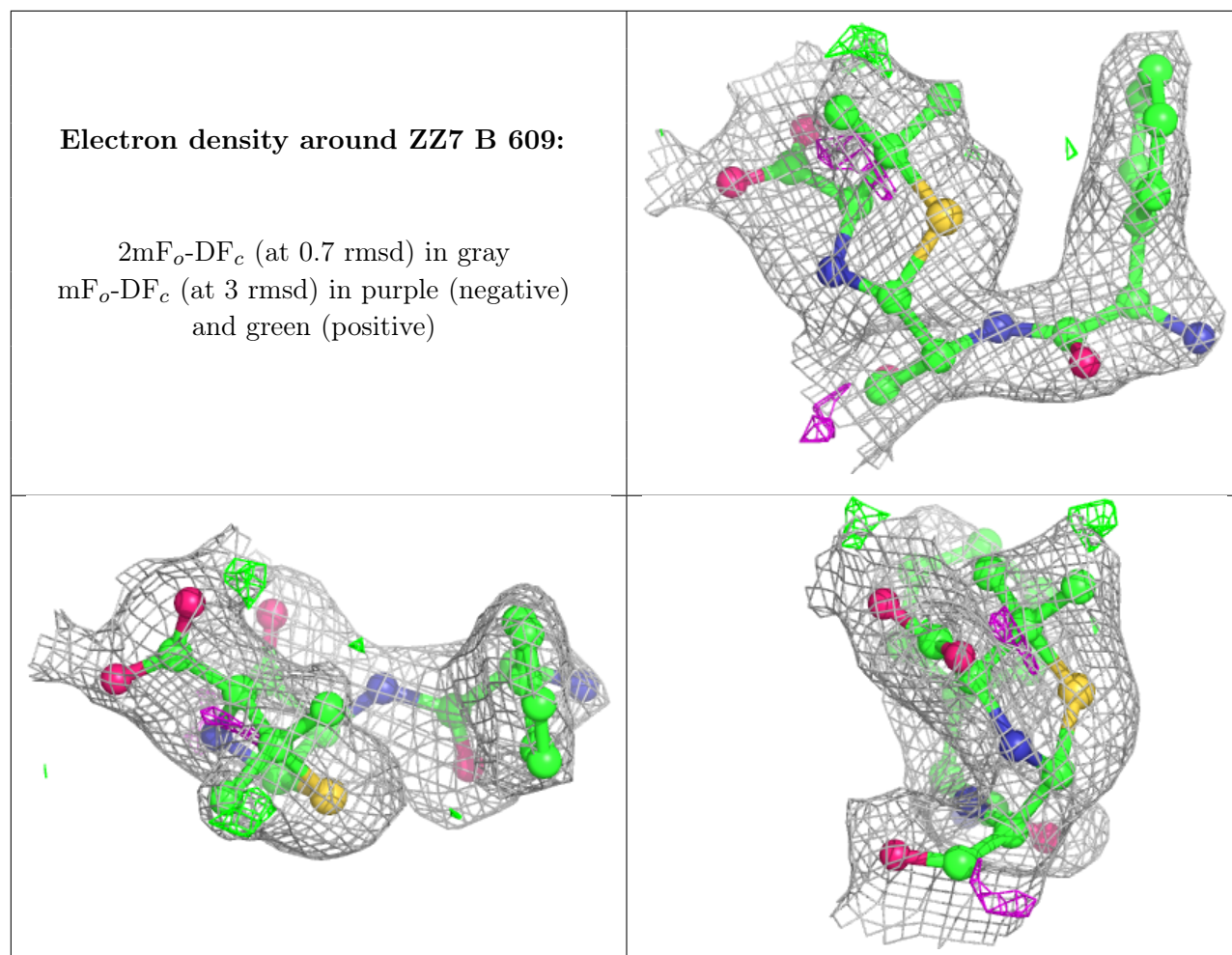
Mol	Type	Chain	Res	Atoms	RSCC	RSR	B-factors(Å ²)	Q<0.9
3	EPE	A	803	15/15	0.63	0.38	55,87,114,115	0
2	SO4	B	607	5/5	0.73	0.30	91,103,118,120	0
2	SO4	B	605	5/5	0.75	0.49	123,123,127,127	0
2	SO4	B	602	5/5	0.84	0.16	90,96,108,109	0
2	SO4	A	802	5/5	0.84	0.23	112,116,124,126	0
4	POL	A	804	4/4	0.85	0.32	62,68,69,71	0
5	PEG	A	805	7/7	0.85	0.19	41,49,55,58	0
2	SO4	A	807	5/5	0.88	0.15	75,83,93,95	0
7	ZZ7	A	809	24/25	0.88	0.13	34,47,51,54	0
3	EPE	A	806	15/15	0.89	0.16	67,87,95,97	0
2	SO4	B	606	5/5	0.89	0.20	87,87,97,102	0
7	ZZ7	B	609	24/25	0.89	0.13	47,56,66,68	0
2	SO4	B	604	5/5	0.90	0.18	75,78,92,97	0
2	SO4	B	601	5/5	0.91	0.16	92,94,100,100	0
2	SO4	B	603	5/5	0.94	0.20	87,89,91,94	0
2	SO4	A	801	5/5	0.96	0.09	52,57,66,72	0
6	ZN	B	608	1/1	0.97	0.07	50,50,50,50	0
6	ZN	A	808	1/1	1.00	0.09	31,31,31,31	0

The following is a graphical depiction of the model fit to experimental electron density of all instances of the Ligand of Interest. In addition, ligands with molecular weight > 250 and outliers as shown on the geometry validation Tables will also be included. Each fit is shown from different orientation to approximate a three-dimensional view.

Electron density around ZZ7 A 809:

$2mF_o-DF_c$ (at 0.7 rmsd) in gray
 mF_o-DF_c (at 3 rmsd) in purple (negative)
and green (positive)





6.5 Other polymers [i](#)

There are no such residues in this entry.