



Full wwPDB X-ray Structure Validation Report ⓘ

Oct 18, 2023 – 12:13 AM EDT

PDB ID : 1REO
Title : L-amino acid oxidase from *Agkistrodon halys pallas*
Authors : Zhang, H.; Teng, M.; Niu, L.; Wang, Y.; Wang, Y.; Liu, Q.; Huang, Q.; Hao, Q.; Dong, Y.; Liu, P.
Deposited on : 2003-11-07
Resolution : 2.31 Å(reported)

This is a Full wwPDB X-ray Structure Validation Report for a publicly released PDB entry.

We welcome your comments at validation@mail.wwpdb.org

A user guide is available at

<https://www.wwpdb.org/validation/2017/XrayValidationReportHelp>

with specific help available everywhere you see the ⓘ symbol.

The types of validation reports are described at

<http://www.wwpdb.org/validation/2017/FAQs#types>.

The following versions of software and data (see [references ⓘ](#)) were used in the production of this report:

MolProbity : 4.02b-467
Mogul : 1.8.5 (274361), CSD as541be (2020)
Xtriage (Phenix) : 1.13
EDS : 2.36
buster-report : 1.1.7 (2018)
Percentile statistics : 20191225.v01 (using entries in the PDB archive December 25th 2019)
Refmac : 5.8.0158
CCP4 : 7.0.044 (Gargrove)
Ideal geometry (proteins) : Engh & Huber (2001)
Ideal geometry (DNA, RNA) : Parkinson et al. (1996)
Validation Pipeline (wwPDB-VP) : 2.36

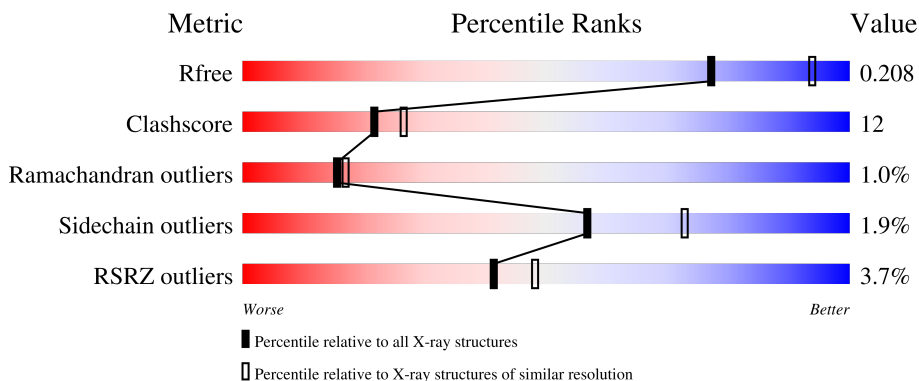
1 Overall quality at a glance

The following experimental techniques were used to determine the structure:

X-RAY DIFFRACTION


The reported resolution of this entry is 2.31 Å.

Percentile scores (ranging between 0-100) for global validation metrics of the entry are shown in the following graphic. The table shows the number of entries on which the scores are based.



Metric	Whole archive (#Entries)	Similar resolution (#Entries, resolution range(Å))
R_{free}	130704	5974 (2.34-2.30)
Clashscore	141614	6604 (2.34-2.30)
Ramachandran outliers	138981	6523 (2.34-2.30)
Sidechain outliers	138945	6523 (2.34-2.30)
RSRZ outliers	127900	5855 (2.34-2.30)

The table below summarises the geometric issues observed across the polymeric chains and their fit to the electron density. The red, orange, yellow and green segments of the lower bar indicate the fraction of residues that contain outliers for ≥ 3 , 2, 1 and 0 types of geometric quality criteria respectively. A grey segment represents the fraction of residues that are not modelled. The numeric value for each fraction is indicated below the corresponding segment, with a dot representing fractions $\leq 5\%$. The upper red bar (where present) indicates the fraction of residues that have poor fit to the electron density. The numeric value is given above the bar.

Mol	Chain	Length	Quality of chain
1	A	486	

The following table lists non-polymeric compounds, carbohydrate monomers and non-standard residues in protein, DNA, RNA chains that are outliers for geometric or electron-density-fit criteria:

Mol	Type	Chain	Res	Chirality	Geometry	Clashes	Electron density
2	NAG	A	490	X	-	-	-

Continued on next page...

Continued from previous page...

Mol	Type	Chain	Res	Chirality	Geometry	Clashes	Electron density
3	CIT	A	487	-	X	-	-

2 Entry composition [i](#)

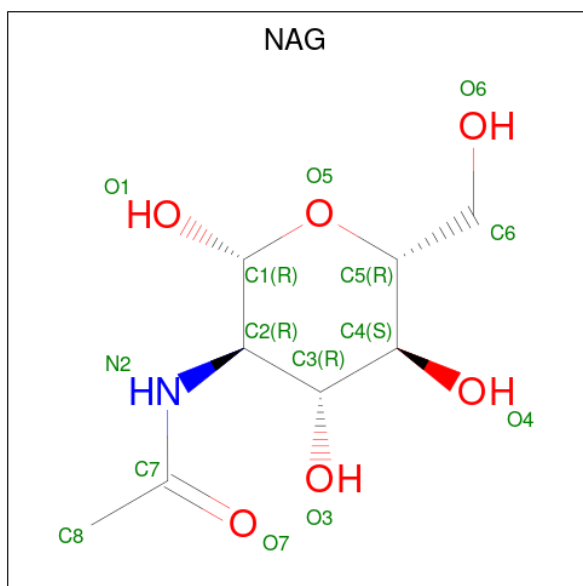
There are 5 unique types of molecules in this entry. The entry contains 4070 atoms, of which 0 are hydrogens and 0 are deuteriums.

In the tables below, the ZeroOcc column contains the number of atoms modelled with zero occupancy, the AltConf column contains the number of residues with at least one atom in alternate conformation and the Trace column contains the number of residues modelled with at most 2 atoms.

- Molecule 1 is a protein called AHPLAAO.

Mol	Chain	Residues	Atoms					ZeroOcc	AltConf	Trace
			Total	C	N	O	S			
1	A	484	3874	2456	668	735	15	0	0	0

- Molecule 2 is 2-acetamido-2-deoxy-beta-D-glucopyranose (three-letter code: NAG) (formula: $C_8H_{15}NO_6$).



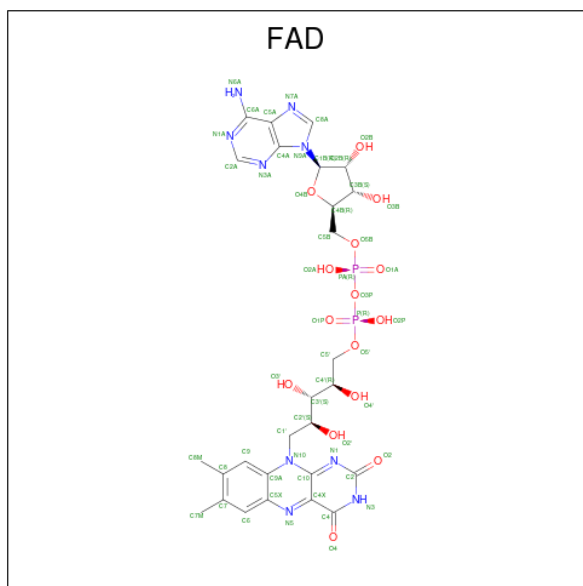
Mol	Chain	Residues	Atoms				ZeroOcc	AltConf
			Total	C	N	O		
2	A	1	14	8	1	5	0	0
2	A	1	14	8	1	5	0	0

- Molecule 3 is CITRIC ACID (three-letter code: CIT) (formula: $C_6H_8O_7$).



Mol	Chain	Residues	Atoms			ZeroOcc	AltConf
3	A	1	Total	C	O	0	0
			13	6	7		

- Molecule 4 is FLAVIN-ADENINE DINUCLEOTIDE (three-letter code: FAD) (formula: $C_{27}H_{33}N_9O_{15}P_2$).



Mol	Chain	Residues	Atoms					ZeroOcc	AltConf
4	A	1	Total	C	N	O	P	0	0
			53	27	9	15	2		

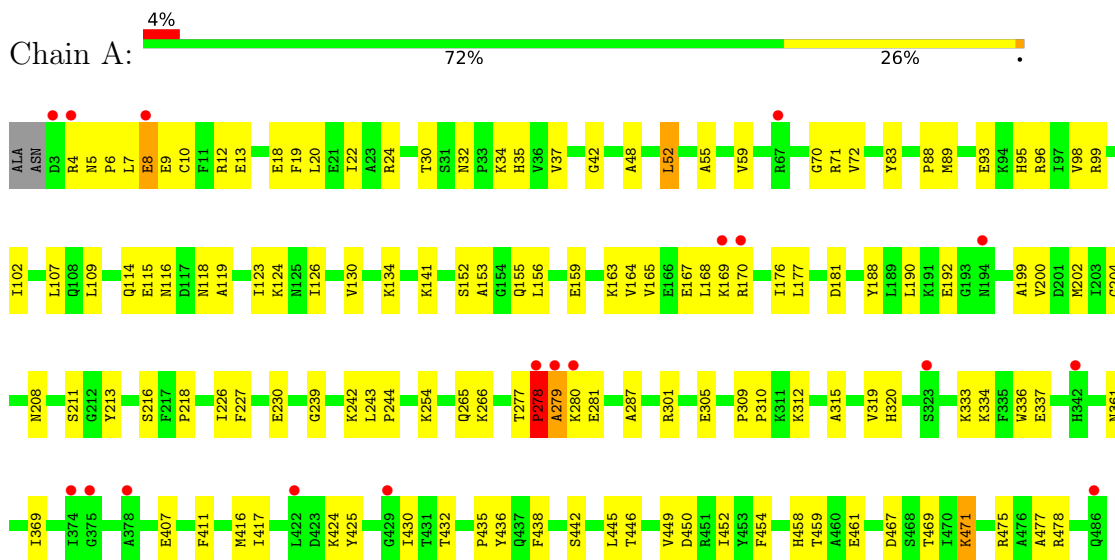
- Molecule 5 is water.

Mol	Chain	Residues	Atoms		ZeroOcc	AltConf
5	A	102	Total 102	O 102	0	0

3 Residue-property plots [i](#)

These plots are drawn for all protein, RNA, DNA and oligosaccharide chains in the entry. The first graphic for a chain summarises the proportions of the various outlier classes displayed in the second graphic. The second graphic shows the sequence view annotated by issues in geometry and electron density. Residues are color-coded according to the number of geometric quality criteria for which they contain at least one outlier: green = 0, yellow = 1, orange = 2 and red = 3 or more. A red dot above a residue indicates a poor fit to the electron density ($RSRZ > 2$). Stretches of 2 or more consecutive residues without any outlier are shown as a green connector. Residues present in the sample, but not in the model, are shown in grey.

- Molecule 1: AHPLAAO



4 Data and refinement statistics

Property	Value	Source
Space group	I 21 3	Depositor
Cell constants a, b, c, α , β , γ	169.31Å 169.31Å 169.31Å 90.00° 90.00° 90.00°	Depositor
Resolution (Å)	48.88 – 2.31 48.88 – 2.31	Depositor EDS
% Data completeness (in resolution range)	96.0 (48.88-2.31) 97.9 (48.88-2.31)	Depositor EDS
R_{merge}	(Not available)	Depositor
R_{sym}	(Not available)	Depositor
$\langle I/\sigma(I) \rangle$ ¹	2.32 (at 2.32Å)	Xtrriage
Refinement program	CNS 1.1	Depositor
R, R_{free}	0.194 , 0.216 0.186 , 0.208	Depositor DCC
R_{free} test set	6518 reflections (9.70%)	wwPDB-VP
Wilson B-factor (Å ²)	38.5	Xtrriage
Anisotropy	0.000	Xtrriage
Bulk solvent k_{sol} (e/Å ³), B_{sol} (Å ²)	0.34 , 47.7	EDS
L-test for twinning ²	$\langle L \rangle = 0.51$, $\langle L^2 \rangle = 0.35$	Xtrriage
Estimated twinning fraction	0.011 for -l,-k,-h	Xtrriage
F_o, F_c correlation	0.96	EDS
Total number of atoms	4070	wwPDB-VP
Average B, all atoms (Å ²)	43.0	wwPDB-VP

Xtrriage's analysis on translational NCS is as follows: *The largest off-origin peak in the Patterson function is 2.77% of the height of the origin peak. No significant pseudotranslation is detected.*

¹Intensities estimated from amplitudes.

²Theoretical values of $\langle |L| \rangle$, $\langle L^2 \rangle$ for acentric reflections are 0.5, 0.333 respectively for untwinned datasets, and 0.375, 0.2 for perfectly twinned datasets.

5 Model quality [i](#)

5.1 Standard geometry [i](#)

Bond lengths and bond angles in the following residue types are not validated in this section: FAD, CIT, NAG

The Z score for a bond length (or angle) is the number of standard deviations the observed value is removed from the expected value. A bond length (or angle) with $|Z| > 5$ is considered an outlier worth inspection. RMSZ is the root-mean-square of all Z scores of the bond lengths (or angles).

Mol	Chain	Bond lengths		Bond angles	
		RMSZ	# Z >5	RMSZ	# Z >5
1	A	0.32	0/3963	0.59	0/5355

There are no bond length outliers.

There are no bond angle outliers.

There are no chirality outliers.

There are no planarity outliers.

5.2 Too-close contacts [i](#)

In the following table, the Non-H and H(model) columns list the number of non-hydrogen atoms and hydrogen atoms in the chain respectively. The H(added) column lists the number of hydrogen atoms added and optimized by MolProbity. The Clashes column lists the number of clashes within the asymmetric unit, whereas Symm-Clashes lists symmetry-related clashes.

Mol	Chain	Non-H	H(model)	H(added)	Clashes	Symm-Clashes
1	A	3874	0	3791	90	0
2	A	28	0	26	3	0
3	A	13	0	5	1	0
4	A	53	0	31	7	0
5	A	102	0	0	4	0
All	All	4070	0	3853	93	0

The all-atom clashscore is defined as the number of clashes found per 1000 atoms (including hydrogen atoms). The all-atom clashscore for this structure is 12.

All (93) close contacts within the same asymmetric unit are listed below, sorted by their clash magnitude.

Atom-1	Atom-2	Interatomic distance (Å)	Clash overlap (Å)
1:A:416:MET:HE2	1:A:417:ILE:H	1.27	0.98
1:A:277:THR:HB	1:A:278:PRO:HD2	1.59	0.83
1:A:123:ILE:HG22	1:A:124:LYS:HG3	1.67	0.76
1:A:32:ASN:ND2	1:A:34:LYS:HE2	2.04	0.71
1:A:301:ARG:HD2	5:A:553:HOH:O	1.89	0.71
1:A:42:GLY:HA3	4:A:488:FAD:H52A	1.74	0.69
1:A:52:LEU:HD13	1:A:477:ALA:HB1	1.74	0.69
1:A:70:GLY:HA3	4:A:488:FAD:O1A	1.95	0.67
1:A:277:THR:HB	1:A:278:PRO:CD	2.26	0.65
1:A:5:ASN:O	1:A:8:GLU:HG3	1.97	0.64
1:A:35:HIS:O	1:A:287:ALA:HB1	1.99	0.63
1:A:59:VAL:HG22	1:A:254:LYS:HD3	1.82	0.62
1:A:19:PHE:CD2	1:A:471:LYS:HD3	2.35	0.61
2:A:490:NAG:H3	2:A:490:NAG:H82	1.82	0.61
1:A:407:GLU:HG2	1:A:411:PHE:CE2	2.37	0.59
1:A:446:THR:HG22	1:A:459:THR:HB	1.84	0.59
1:A:319:VAL:HG21	1:A:445:LEU:HD11	1.85	0.59
1:A:165:VAL:HG12	1:A:169:LYS:HE3	1.84	0.59
1:A:37:VAL:HG23	1:A:287:ALA:HB2	1.85	0.58
1:A:93:GLU:HA	1:A:99:ARG:NH2	2.19	0.57
1:A:320:HIS:HB3	1:A:432:THR:O	2.04	0.56
1:A:279:ALA:HB3	1:A:281:GLU:HG3	1.87	0.56
1:A:71:ARG:HD3	4:A:488:FAD:O2A	2.04	0.56
1:A:130:VAL:HG12	1:A:134:LYS:HE2	1.87	0.55
1:A:416:MET:HG3	1:A:417:ILE:N	2.22	0.55
1:A:239:GLY:O	1:A:242:LYS:HG2	2.08	0.54
1:A:211:SER:HA	5:A:560:HOH:O	2.08	0.54
1:A:243:LEU:HB3	1:A:244:PRO:CD	2.38	0.54
1:A:116:ASN:HD21	1:A:118:ASN:HB2	1.72	0.53
1:A:48:ALA:O	1:A:52:LEU:HB2	2.09	0.53
1:A:32:ASN:HD21	1:A:34:LYS:HE2	1.73	0.53
1:A:449:VAL:CG2	1:A:452:ILE:HB	2.40	0.52
1:A:5:ASN:HD21	1:A:7:LEU:HB2	1.74	0.52
1:A:458:HIS:H	1:A:458:HIS:CD2	2.28	0.51
1:A:30:THR:HG22	1:A:55:ALA:O	2.11	0.51
1:A:315:ALA:O	1:A:319:VAL:HG23	2.10	0.51
1:A:98:VAL:HG22	1:A:467:ASP:HA	1.92	0.51
1:A:156:LEU:HD13	1:A:199:ALA:HB1	1.92	0.51
1:A:115:GLU:CD	1:A:134:LYS:HZ1	2.14	0.51
1:A:9:GLU:HA	1:A:12:ARG:NH1	2.26	0.50
1:A:312:LYS:HE2	1:A:454:PHE:CE1	2.46	0.50
1:A:435:PRO:O	1:A:436:TYR:HB2	2.12	0.49

Continued on next page...

Continued from previous page...

Atom-1	Atom-2	Interatomic distance (Å)	Clash overlap (Å)
1:A:188:TYR:CE1	1:A:192:GLU:HB2	2.47	0.49
1:A:265:GLN:HG2	1:A:305:GLU:OE1	2.12	0.49
1:A:336:TRP:CZ3	1:A:369:ILE:HD11	2.47	0.49
1:A:155:GLN:O	1:A:159:GLU:HB2	2.12	0.49
1:A:333:LYS:HD2	1:A:411:PHE:CE1	2.48	0.49
1:A:126:ILE:HD11	1:A:141:LYS:HE2	1.95	0.48
1:A:361:ASN:ND2	2:A:490:NAG:C7	2.76	0.48
1:A:424:LYS:HE3	1:A:425:TYR:CZ	2.50	0.47
1:A:334:LYS:HE3	1:A:337:GLU:OE1	2.14	0.47
1:A:114:GLN:HE22	1:A:227:PHE:HE2	1.63	0.47
1:A:153:ALA:N	1:A:202:MET:HE2	2.29	0.47
1:A:266:LYS:HE3	1:A:450:ASP:OD1	2.15	0.47
1:A:116:ASN:ND2	1:A:118:ASN:H	2.13	0.46
1:A:10:CYS:SG	1:A:176:ILE:HD11	2.56	0.46
1:A:438:PHE:O	1:A:442:SER:HB2	2.16	0.46
1:A:95:HIS:O	1:A:99:ARG:HG2	2.16	0.46
1:A:226:ILE:O	1:A:230:GLU:HB3	2.16	0.45
2:A:490:NAG:H82	2:A:490:NAG:C3	2.45	0.45
1:A:152:SER:OG	1:A:155:GLN:HG3	2.17	0.45
4:A:488:FAD:H1'1	4:A:488:FAD:H9	1.69	0.45
1:A:156:LEU:O	1:A:159:GLU:HB3	2.16	0.45
1:A:430:ILE:HD13	3:A:487:CIT:O2	2.17	0.44
1:A:204:GLY:HA3	5:A:555:HOH:O	2.16	0.44
1:A:88:PRO:HA	4:A:488:FAD:N5	2.33	0.43
1:A:83:TYR:CD1	1:A:83:TYR:C	2.92	0.43
1:A:18:GLU:OE1	1:A:478:ARG:NH1	2.51	0.43
1:A:163:LYS:O	1:A:167:GLU:HG2	2.19	0.43
1:A:72:VAL:HG22	1:A:88:PRO:HG2	1.99	0.43
1:A:216:SER:OG	1:A:218:PRO:HD2	2.18	0.43
1:A:116:ASN:ND2	1:A:118:ASN:HB2	2.33	0.43
1:A:119:ALA:HB3	1:A:130:VAL:HG21	2.01	0.42
1:A:13:GLU:OE1	1:A:461:GLU:HB2	2.18	0.42
1:A:277:THR:CB	1:A:278:PRO:CD	2.95	0.42
1:A:176:ILE:HG13	1:A:177:LEU:N	2.35	0.42
1:A:5:ASN:OD1	1:A:6:PRO:HD2	2.20	0.42
1:A:88:PRO:HA	4:A:488:FAD:C4X	2.49	0.42
1:A:190:LEU:CD2	1:A:200:VAL:HG21	2.49	0.42
1:A:59:VAL:CG2	1:A:254:LYS:HD3	2.49	0.42
1:A:89:MET:HE3	5:A:492:HOH:O	2.18	0.42
1:A:102:ILE:HD13	1:A:109:LEU:HD21	2.01	0.42
1:A:37:VAL:HG23	1:A:287:ALA:CB	2.49	0.41

Continued on next page...

Continued from previous page...

Atom-1	Atom-2	Interatomic distance (Å)	Clash overlap (Å)
1:A:469:THR:HG21	4:A:488:FAD:O5'	2.20	0.41
1:A:164:VAL:HG23	1:A:188:TYR:OH	2.20	0.41
1:A:170:ARG:HG3	1:A:170:ARG:HH11	1.85	0.41
1:A:181:ASP:CG	1:A:438:PHE:HB3	2.41	0.41
1:A:98:VAL:HG23	1:A:467:ASP:OD1	2.21	0.41
1:A:52:LEU:HD12	1:A:52:LEU:HA	1.92	0.41
1:A:309:PRO:HA	1:A:310:PRO:HD3	1.95	0.41
1:A:18:GLU:O	1:A:22:ILE:HG13	2.21	0.41
1:A:24:ARG:NH2	1:A:96:ARG:NH2	2.68	0.40
1:A:102:ILE:HG23	1:A:107:LEU:HB2	2.03	0.40

There are no symmetry-related clashes.

5.3 Torsion angles [i](#)

5.3.1 Protein backbone [i](#)

In the following table, the Percentiles column shows the percent Ramachandran outliers of the chain as a percentile score with respect to all X-ray entries followed by that with respect to entries of similar resolution.

The Analysed column shows the number of residues for which the backbone conformation was analysed, and the total number of residues.

Mol	Chain	Analysed	Favoured	Allowed	Outliers	Percentiles
1	A	482/486 (99%)	458 (95%)	19 (4%)	5 (1%)	15 17

All (5) Ramachandran outliers are listed below:

Mol	Chain	Res	Type
1	A	279	ALA
1	A	280	LYS
1	A	4	ARG
1	A	8	GLU
1	A	278	PRO

5.3.2 Protein sidechains [i](#)

In the following table, the Percentiles column shows the percent sidechain outliers of the chain as a percentile score with respect to all X-ray entries followed by that with respect to entries of similar

resolution.

The Analysed column shows the number of residues for which the sidechain conformation was analysed, and the total number of residues.

Mol	Chain	Analysed	Rotameric	Outliers	Percentiles
1	A	416/417 (100%)	408 (98%)	8 (2%)	57 73

All (8) residues with a non-rotameric sidechain are listed below:

Mol	Chain	Res	Type
1	A	20	LEU
1	A	52	LEU
1	A	168	LEU
1	A	208	ASN
1	A	213	TYR
1	A	278	PRO
1	A	471	LYS
1	A	475	ARG

Sometimes sidechains can be flipped to improve hydrogen bonding and reduce clashes. All (10) such sidechains are listed below:

Mol	Chain	Res	Type
1	A	32	ASN
1	A	116	ASN
1	A	155	GLN
1	A	208	ASN
1	A	256	HIS
1	A	265	GLN
1	A	382	GLN
1	A	402	GLN
1	A	409	GLN
1	A	458	HIS

5.3.3 RNA [i](#)

There are no RNA molecules in this entry.

5.4 Non-standard residues in protein, DNA, RNA chains [i](#)

There are no non-standard protein/DNA/RNA residues in this entry.

5.5 Carbohydrates [i](#)

There are no monosaccharides in this entry.

5.6 Ligand geometry [i](#)

4 ligands are modelled in this entry.

In the following table, the Counts columns list the number of bonds (or angles) for which Mogul statistics could be retrieved, the number of bonds (or angles) that are observed in the model and the number of bonds (or angles) that are defined in the Chemical Component Dictionary. The Link column lists molecule types, if any, to which the group is linked. The Z score for a bond length (or angle) is the number of standard deviations the observed value is removed from the expected value. A bond length (or angle) with $|Z| > 2$ is considered an outlier worth inspection. RMSZ is the root-mean-square of all Z scores of the bond lengths (or angles).

Mol	Type	Chain	Res	Link	Bond lengths			Bond angles		
					Counts	RMSZ	# Z > 2	Counts	RMSZ	# Z > 2
2	NAG	A	490	1	14,14,15	0.61	0	17,19,21	0.60	0
3	CIT	A	487	-	12,12,12	2.04	4 (33%)	17,17,17	3.25	9 (52%)
4	FAD	A	488	-	53,58,58	1.77	13 (24%)	68,89,89	1.51	9 (13%)
2	NAG	A	489	1	14,14,15	0.50	0	17,19,21	0.68	1 (5%)

In the following table, the Chirals column lists the number of chiral outliers, the number of chiral centers analysed, the number of these observed in the model and the number defined in the Chemical Component Dictionary. Similar counts are reported in the Torsion and Rings columns. '-' means no outliers of that kind were identified.

Mol	Type	Chain	Res	Link	Chirals	Torsions	Rings
2	NAG	A	490	1	1/1/5/7	3/6/23/26	0/1/1/1
3	CIT	A	487	-	-	5/16/16/16	-
4	FAD	A	488	-	-	5/30/50/50	0/6/6/6
2	NAG	A	489	1	-	4/6/23/26	0/1/1/1

All (17) bond length outliers are listed below:

Mol	Chain	Res	Type	Atoms	Z	Observed(Å)	Ideal(Å)
3	A	487	CIT	C3-C6	4.66	1.58	1.53
4	A	488	FAD	PA-O2A	-4.65	1.33	1.55
4	A	488	FAD	O4B-C1B	4.61	1.47	1.41
4	A	488	FAD	P-O2P	-3.70	1.37	1.55
4	A	488	FAD	O5'-C5'	3.68	1.58	1.44
4	A	488	FAD	C4A-N3A	2.93	1.39	1.35

Continued on next page...

Continued from previous page...

Mol	Chain	Res	Type	Atoms	Z	Observed(Å)	Ideal(Å)
3	A	487	CIT	O7-C3	2.90	1.48	1.43
4	A	488	FAD	C2B-C1B	-2.71	1.49	1.53
4	A	488	FAD	C8-C7	2.64	1.47	1.40
4	A	488	FAD	C4X-N5	2.56	1.35	1.30
4	A	488	FAD	C9A-N10	2.49	1.45	1.41
4	A	488	FAD	C6-C5X	2.38	1.43	1.40
4	A	488	FAD	O2-C2	-2.35	1.19	1.24
4	A	488	FAD	C2A-N3A	2.12	1.35	1.32
4	A	488	FAD	C2A-N1A	2.10	1.37	1.33
3	A	487	CIT	O1-C1	2.05	1.28	1.22
3	A	487	CIT	O5-C6	2.03	1.28	1.22

All (19) bond angle outliers are listed below:

Mol	Chain	Res	Type	Atoms	Z	Observed(°)	Ideal(°)
3	A	487	CIT	O7-C3-C6	-7.78	97.95	108.86
3	A	487	CIT	O5-C6-C3	-6.79	112.64	122.25
4	A	488	FAD	O4B-C1B-C2B	-4.94	99.70	106.93
4	A	488	FAD	P-O3P-PA	3.95	146.39	132.83
4	A	488	FAD	C1'-N10-C9A	-3.79	114.19	120.51
4	A	488	FAD	C5'-C4'-C3'	-3.61	105.23	112.20
3	A	487	CIT	O2-C1-C2	3.43	125.37	114.35
3	A	487	CIT	C2-C3-C6	3.43	117.48	110.11
3	A	487	CIT	O4-C5-O3	-3.22	115.26	123.30
3	A	487	CIT	C3-C2-C1	3.11	121.35	113.81
3	A	487	CIT	O6-C6-O5	3.08	133.61	123.82
4	A	488	FAD	C5A-C6A-N6A	2.61	124.32	120.35
4	A	488	FAD	C2A-N1A-C6A	2.57	123.16	118.75
3	A	487	CIT	O1-C1-C2	-2.54	115.51	122.94
4	A	488	FAD	C5A-C6A-N1A	-2.51	114.67	120.35
4	A	488	FAD	O5B-PA-O1A	-2.42	99.60	109.07
4	A	488	FAD	C4-N3-C2	-2.18	121.61	125.64
3	A	487	CIT	C3-C4-C5	2.10	118.90	113.81
2	A	489	NAG	C2-N2-C7	-2.09	119.93	122.90

All (1) chirality outliers are listed below:

Mol	Chain	Res	Type	Atom
2	A	490	NAG	C1

All (17) torsion outliers are listed below:

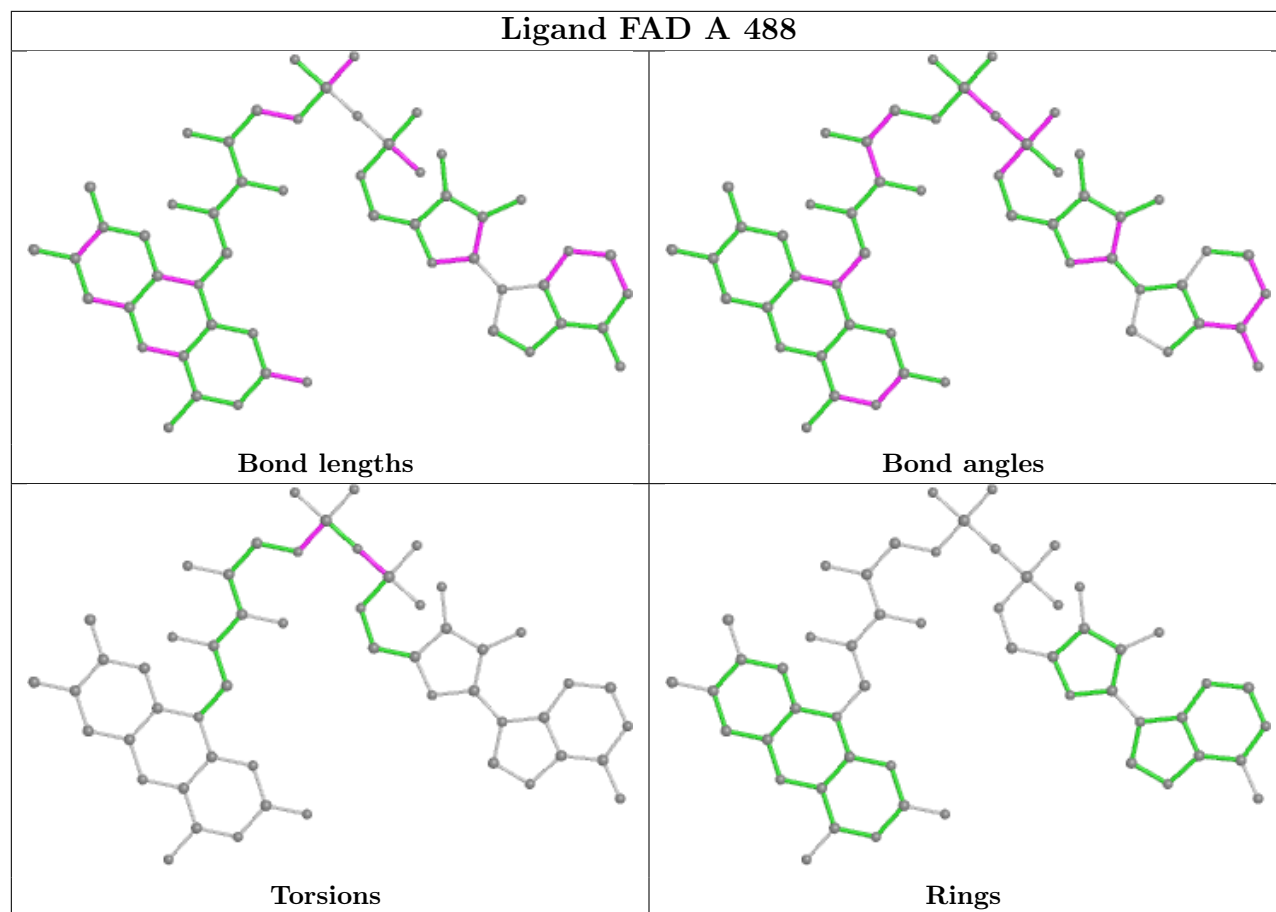
Mol	Chain	Res	Type	Atoms
2	A	489	NAG	C8-C7-N2-C2
2	A	489	NAG	O7-C7-N2-C2
2	A	490	NAG	C8-C7-N2-C2
2	A	490	NAG	O7-C7-N2-C2
3	A	487	CIT	C1-C2-C3-O7
3	A	487	CIT	C1-C2-C3-C4
3	A	487	CIT	C1-C2-C3-C6
4	A	488	FAD	C5'-O5'-P-O2P
2	A	489	NAG	C4-C5-C6-O6
4	A	488	FAD	C5'-O5'-P-O3P
4	A	488	FAD	P-O3P-PA-O2A
2	A	489	NAG	O5-C5-C6-O6
4	A	488	FAD	C5'-O5'-P-O1P
3	A	487	CIT	C2-C3-C6-O5
3	A	487	CIT	C2-C3-C6-O6
2	A	490	NAG	C3-C2-N2-C7
4	A	488	FAD	P-O3P-PA-O1A

There are no ring outliers.

3 monomers are involved in 11 short contacts:

Mol	Chain	Res	Type	Clashes	Symm-Clashes
2	A	490	NAG	3	0
3	A	487	CIT	1	0
4	A	488	FAD	7	0

The following is a two-dimensional graphical depiction of Mogul quality analysis of bond lengths, bond angles, torsion angles, and ring geometry for all instances of the Ligand of Interest. In addition, ligands with molecular weight > 250 and outliers as shown on the validation Tables will also be included. For torsion angles, if less than 5% of the Mogul distribution of torsion angles is within 10 degrees of the torsion angle in question, then that torsion angle is considered an outlier. Any bond that is central to one or more torsion angles identified as an outlier by Mogul will be highlighted in the graph. For rings, the root-mean-square deviation (RMSD) between the ring in question and similar rings identified by Mogul is calculated over all ring torsion angles. If the average RMSD is greater than 60 degrees and the minimal RMSD between the ring in question and any Mogul-identified rings is also greater than 60 degrees, then that ring is considered an outlier. The outliers are highlighted in purple. The color gray indicates Mogul did not find sufficient equivalents in the CSD to analyse the geometry.



5.7 Other polymers [i](#)

There are no such residues in this entry.

5.8 Polymer linkage issues [i](#)

There are no chain breaks in this entry.

6 Fit of model and data [i](#)

6.1 Protein, DNA and RNA chains [i](#)

In the following table, the column labelled ‘#RSRZ > 2’ contains the number (and percentage) of RSRZ outliers, followed by percent RSRZ outliers for the chain as percentile scores relative to all X-ray entries and entries of similar resolution. The OWAB column contains the minimum, median, 95th percentile and maximum values of the occupancy-weighted average B-factor per residue. The column labelled ‘Q < 0.9’ lists the number of (and percentage) of residues with an average occupancy less than 0.9.

Mol	Chain	Analysed	<RSRZ>	#RSRZ>2	OWAB(Å ²)	Q<0.9
1	A	484/486 (99%)	0.02	18 (3%) 41 48	24, 41, 63, 87	0

All (18) RSRZ outliers are listed below:

Mol	Chain	Res	Type	RSRZ
1	A	278	PRO	6.2
1	A	279	ALA	4.8
1	A	3	ASP	3.7
1	A	280	LYS	3.4
1	A	194	ASN	3.3
1	A	169	LYS	3.2
1	A	486	GLN	3.2
1	A	170	ARG	3.0
1	A	4	ARG	2.7
1	A	375	GLY	2.5
1	A	378	ALA	2.4
1	A	342	HIS	2.3
1	A	8	GLU	2.1
1	A	422	LEU	2.1
1	A	67	ARG	2.0
1	A	374	ILE	2.0
1	A	429	GLY	2.0
1	A	323	SER	2.0

6.2 Non-standard residues in protein, DNA, RNA chains [i](#)

There are no non-standard protein/DNA/RNA residues in this entry.

6.3 Carbohydrates [i](#)

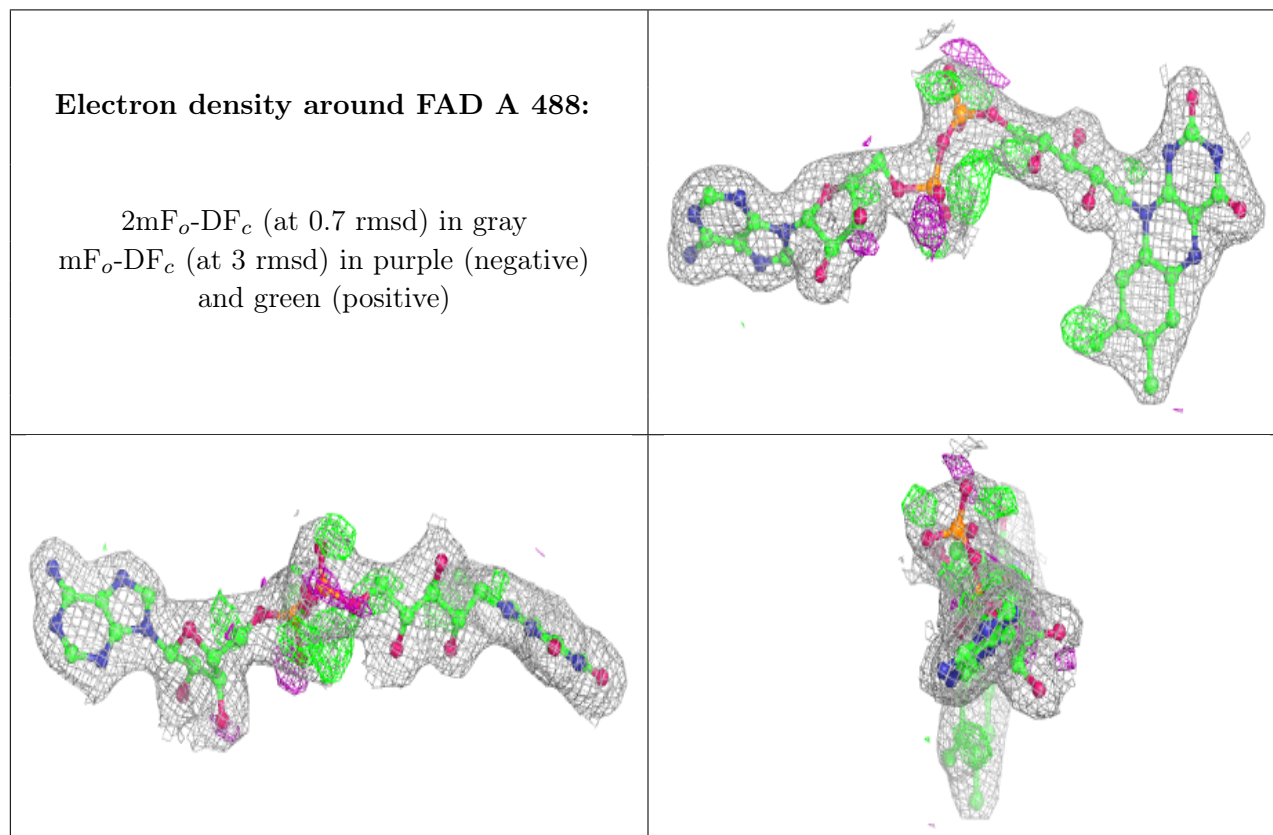
There are no monosaccharides in this entry.

6.4 Ligands [i](#)

In the following table, the Atoms column lists the number of modelled atoms in the group and the number defined in the chemical component dictionary. The B-factors column lists the minimum, median, 95th percentile and maximum values of B factors of atoms in the group. The column labelled 'Q< 0.9' lists the number of atoms with occupancy less than 0.9.

Mol	Type	Chain	Res	Atoms	RSCC	RSR	B-factors(Å ²)	Q<0.9
2	NAG	A	490	14/15	0.72	0.39	79,84,85,86	0
3	CIT	A	487	13/13	0.85	0.29	60,64,68,71	0
2	NAG	A	489	14/15	0.88	0.17	69,71,72,73	0
4	FAD	A	488	53/53	0.95	0.16	24,30,39,41	0

The following is a graphical depiction of the model fit to experimental electron density of all instances of the Ligand of Interest. In addition, ligands with molecular weight > 250 and outliers as shown on the geometry validation Tables will also be included. Each fit is shown from different orientation to approximate a three-dimensional view.



6.5 Other polymers [i](#)

There are no such residues in this entry.