



## Full wwPDB EM Validation Report ⓘ

Jan 8, 2024 – 06:49 pm GMT

PDB ID : 8REE  
EMDB ID : EMD-19084  
Title : Cryo-EM structure of bacterial RNA polymerase-sigma54 initial transcribing complex - 9nt complex  
Authors : Gao, F.; Zhang, X.  
Deposited on : 2023-12-10  
Resolution : 3.80 Å(reported)

This is a Full wwPDB EM Validation Report for a publicly released PDB entry.

We welcome your comments at [validation@mail.wwpdb.org](mailto:validation@mail.wwpdb.org)

A user guide is available at

<https://www.wwpdb.org/validation/2017/EMValidationReportHelp>

with specific help available everywhere you see the ⓘ symbol.

The types of validation reports are described at

<http://www.wwpdb.org/validation/2017/FAQs#types>.

---

The following versions of software and data (see [references ⓘ](#)) were used in the production of this report:

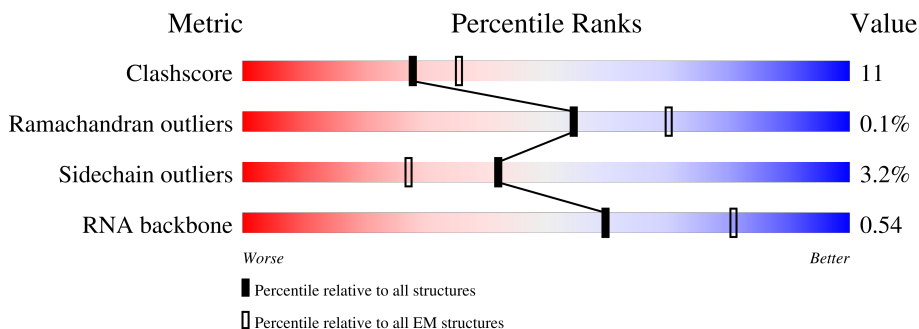
EMDB validation analysis : 0.0.1.dev70  
MolProbity : 4.02b-467  
Percentile statistics : 20191225.v01 (using entries in the PDB archive December 25th 2019)  
MapQ : 1.9.9  
Ideal geometry (proteins) : Engh & Huber (2001)  
Ideal geometry (DNA, RNA) : Parkinson et al. (1996)  
Validation Pipeline (wwPDB-VP) : 2.36

# 1 Overall quality at a glance i

The following experimental techniques were used to determine the structure:  
*ELECTRON MICROSCOPY*

The reported resolution of this entry is 3.80 Å.

Percentile scores (ranging between 0-100) for global validation metrics of the entry are shown in the following graphic. The table shows the number of entries on which the scores are based.



Metric	Whole archive (#Entries)	EM structures (#Entries)
Clashscore	158937	4297
Ramachandran outliers	154571	4023
Sidechain outliers	154315	3826
RNA backbone	4643	859

The table below summarises the geometric issues observed across the polymeric chains and their fit to the map. The red, orange, yellow and green segments of the bar indicate the fraction of residues that contain outliers for  $\geq 3$ , 2, 1 and 0 types of geometric quality criteria respectively. A grey segment represents the fraction of residues that are not modelled. The numeric value for each fraction is indicated below the corresponding segment, with a dot representing fractions  $\leq 5\%$ . The upper red bar (where present) indicates the fraction of residues that have poor fit to the EM map (all-atom inclusion  $< 40\%$ ). The numeric value is given above the bar.

Mol	Chain	Length	Quality of chain
1	A	321	
1	B	321	
2	C	1341	
3	D	1373	
4	E	74	
5	M	329	
6	N	45	

Continued on next page...

*Continued from previous page...*

Mol	Chain	Length	Quality of chain
7	R	9	
8	T	49	

## 2 Entry composition [i](#)

There are 10 unique types of molecules in this entry. The entry contains 28605 atoms, of which 0 are hydrogens and 0 are deuteriums.

In the tables below, the AltConf column contains the number of residues with at least one atom in alternate conformation and the Trace column contains the number of residues modelled with at most 2 atoms.

- Molecule 1 is a protein called DNA-directed RNA polymerase subunit alpha.

Mol	Chain	Residues	Atoms					AltConf	Trace
			Total	C	N	O	S		
1	A	308	Total	C	N	O	S	0	0
			2365	1481	415	461	8		
1	B	235	Total	C	N	O	S	0	0
			1735	1085	305	340	5		

- Molecule 2 is a protein called DNA-directed RNA polymerase subunit beta.

Mol	Chain	Residues	Atoms					AltConf	Trace
			Total	C	N	O	S		
2	C	1341	Total	C	N	O	S	0	0
			10080	6328	1748	1964	40		

- Molecule 3 is a protein called DNA-directed RNA polymerase subunit beta'.

Mol	Chain	Residues	Atoms					AltConf	Trace
			Total	C	N	O	S		
3	D	1330	Total	C	N	O	S	0	0
			9654	6065	1733	1815	41		

- Molecule 4 is a protein called DNA-directed RNA polymerase subunit omega.

Mol	Chain	Residues	Atoms					AltConf	Trace
			Total	C	N	O	S		
4	E	74	Total	C	N	O	S	0	0
			546	337	105	103	1		

- Molecule 5 is a protein called RNA polymerase sigma-54 factor.

Mol	Chain	Residues	Atoms					AltConf	Trace
			Total	C	N	O	S		
5	M	329	Total	C	N	O	S	0	0
			2103	1318	370	414	1		

- Molecule 6 is a DNA chain called DNA (45-MER).

Mol	Chain	Residues	Atoms					AltConf	Trace
			Total	C	N	O	P		
6	N	45	917	438	159	275	45	0	0

- Molecule 7 is a RNA chain called RNA (5'-R(P\*GP\*CP\*CP\*GP\*CP\*GP\*AP\*UP\*C)-3').

Mol	Chain	Residues	Atoms					AltConf	Trace
			Total	C	N	O	P		
7	R	9	191	85	34	63	9	0	0

- Molecule 8 is a DNA chain called DNA (49-MER).

Mol	Chain	Residues	Atoms					AltConf	Trace
			Total	C	N	O	P		
8	T	49	1011	478	197	287	49	0	0

- Molecule 9 is MAGNESIUM ION (three-letter code: MG) (formula: Mg).

Mol	Chain	Residues	Atoms		AltConf
			Total	Mg	
9	D	1	1	1	0

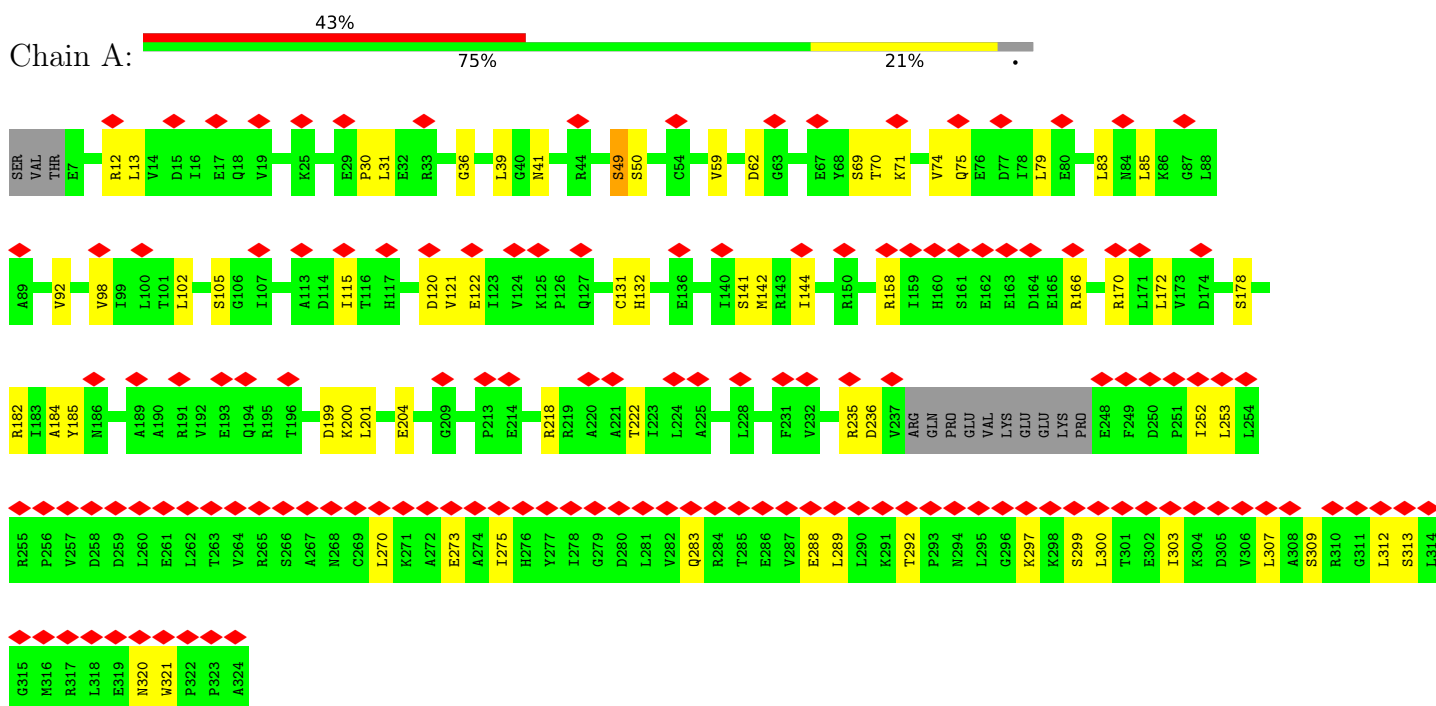
- Molecule 10 is ZINC ION (three-letter code: ZN) (formula: Zn).

Mol	Chain	Residues	Atoms		AltConf
			Total	Zn	
10	D	2	2	2	0

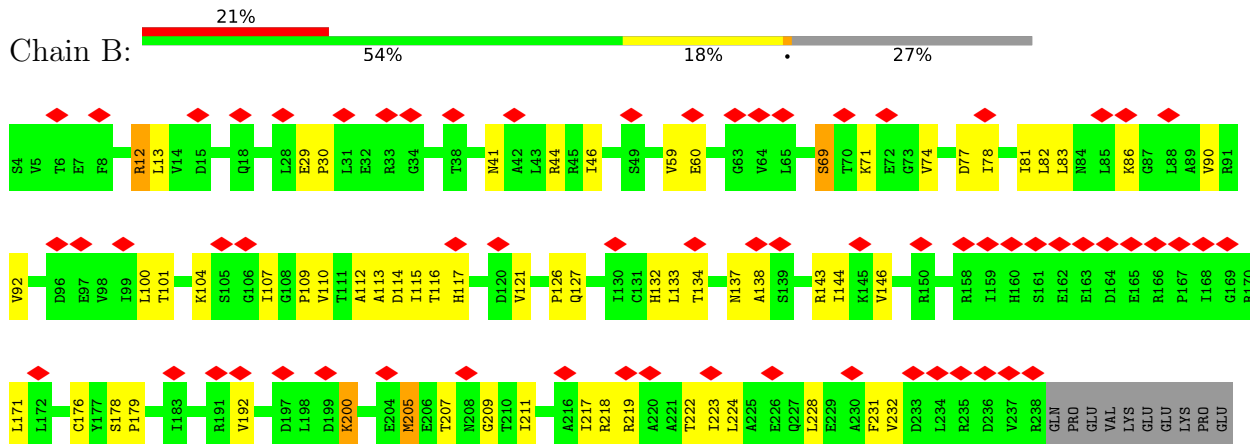
### 3 Residue-property plots

These plots are drawn for all protein, RNA, DNA and oligosaccharide chains in the entry. The first graphic for a chain summarises the proportions of the various outlier classes displayed in the second graphic. The second graphic shows the sequence view annotated by issues in geometry and atom inclusion in map density. Residues are color-coded according to the number of geometric quality criteria for which they contain at least one outlier: green = 0, yellow = 1, orange = 2 and red = 3 or more. A red diamond above a residue indicates a poor fit to the EM map for this residue (all-atom inclusion < 40%). Stretches of 2 or more consecutive residues without any outlier are shown as a green connector. Residues present in the sample, but not in the model, are shown in grey.

- Molecule 1: DNA-directed RNA polymerase subunit alpha

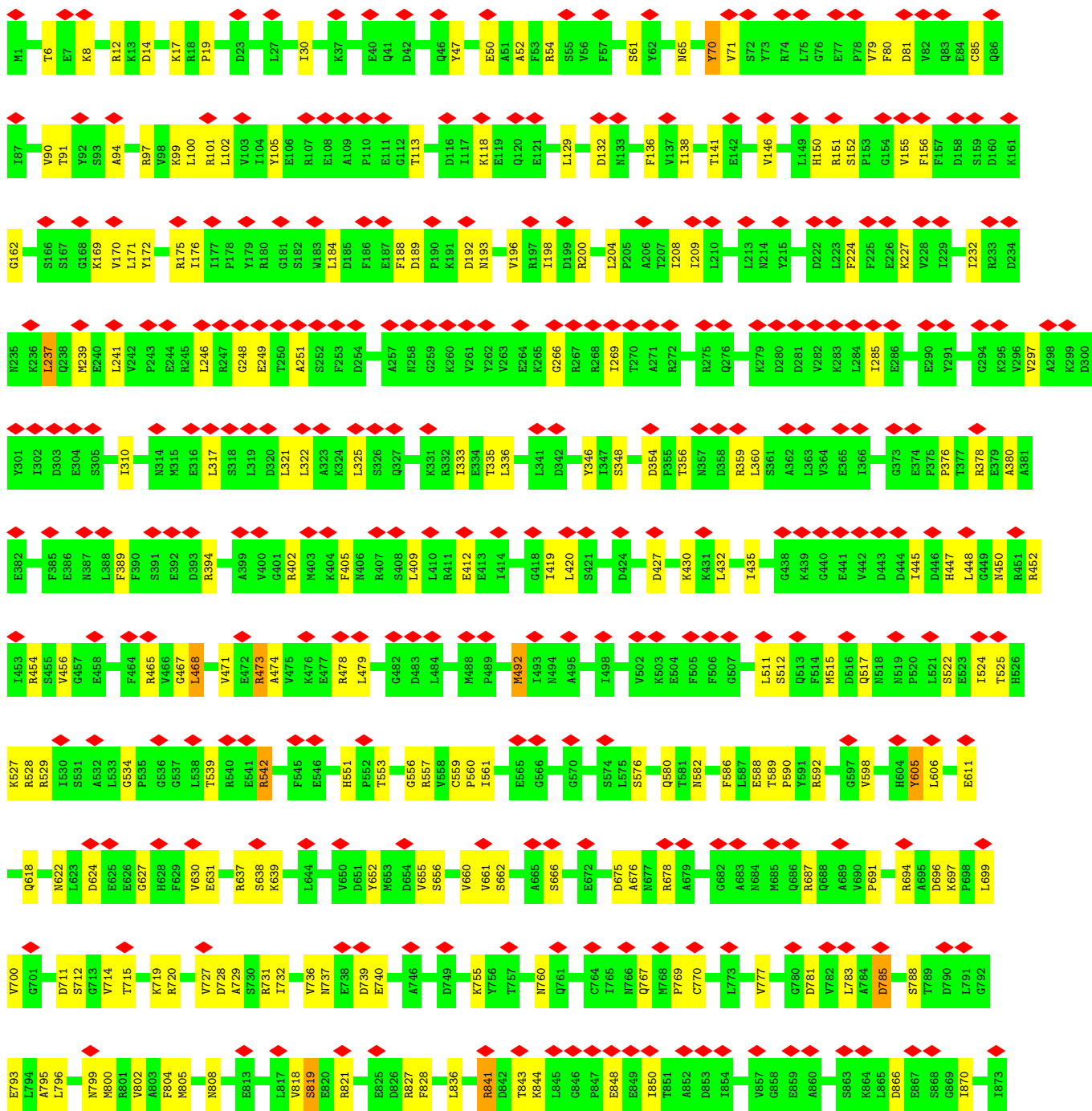
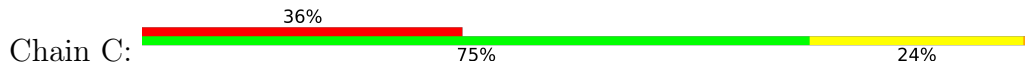


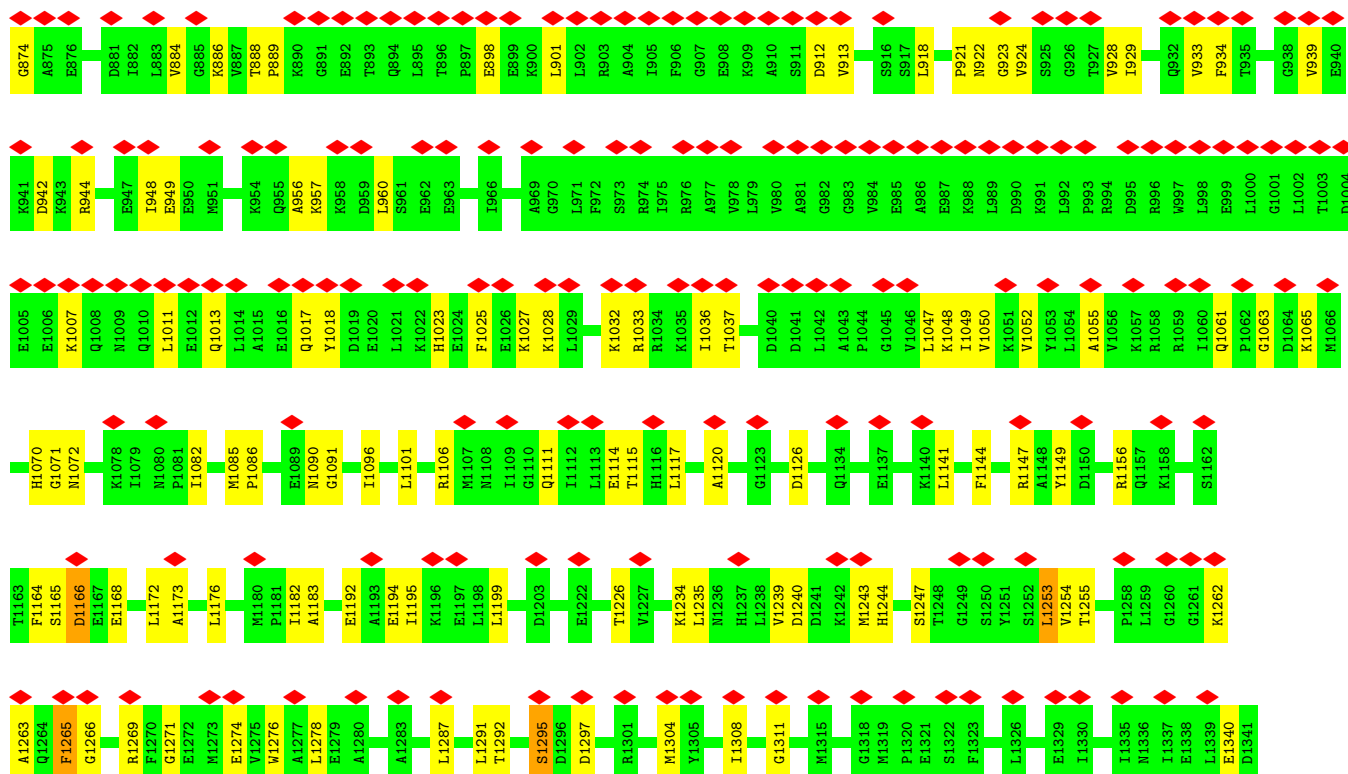
- Molecule 1: DNA-directed RNA polymerase subunit alpha



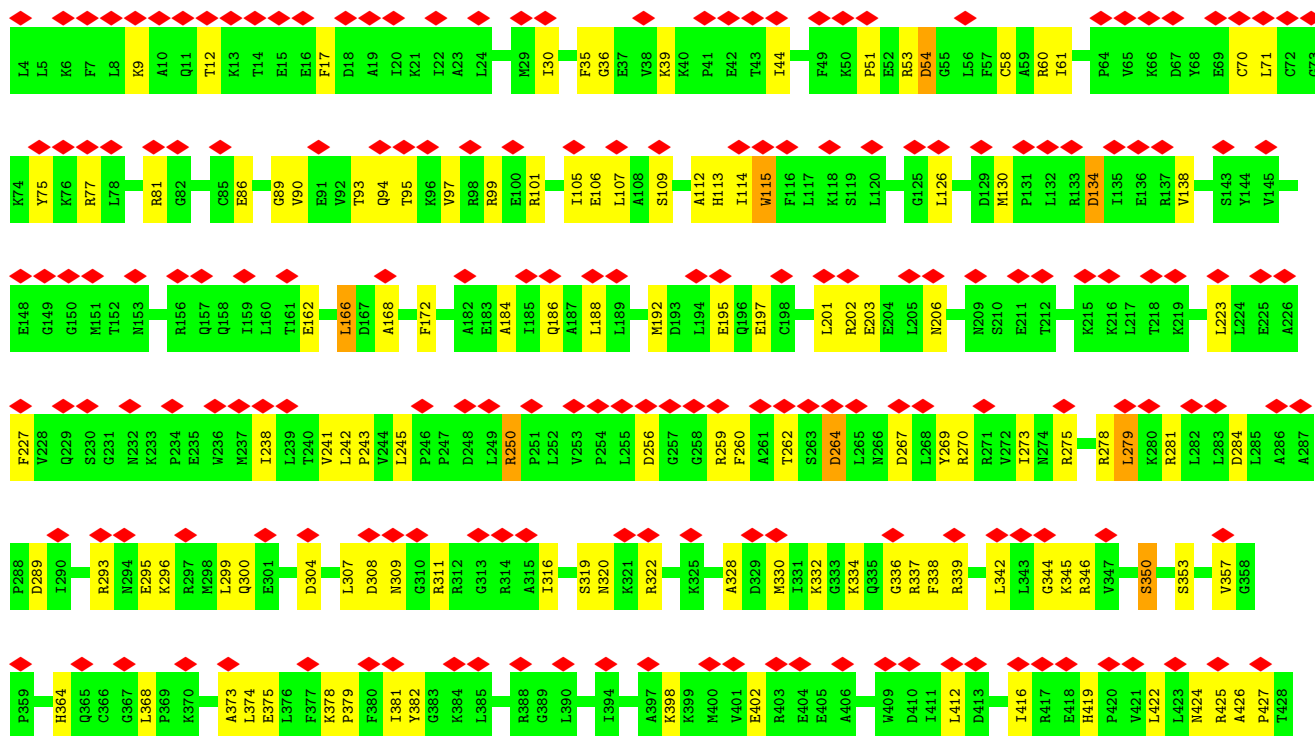
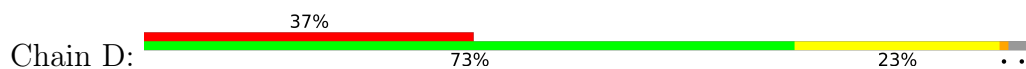
PHE	ASP	PRO	LEU	LEU	LEU	ARG	PRO	VAL	VAL	THR	LEU	LEU	THR	VAL	THR	ARG	SER	SER	ALA	ALA	CYS	LYS	LYS	ALA	GLU	ALA	ILE	HIS	TYR	ILE	GLY	ASP	VAL	VAL	GLN	ARG	THR	THR	GLU	VAL	GLU	LEU	LEU	LYS	THR	PRO	ASN	LEU	GLY	LYS	LYS	SER	SER	THR	THR	LEU	ILE	LYS	ASP	VAL	LEU	ALA
SER	ARG	GLY	LEU	SER	LEU	GLY	MET	ARG	ARG	VAL	GLU	ASP	ASP	ASP	TRP	PRO	PRO	ALA																																												

● Molecule 2: DNA-directed RNA polymerase subunit beta

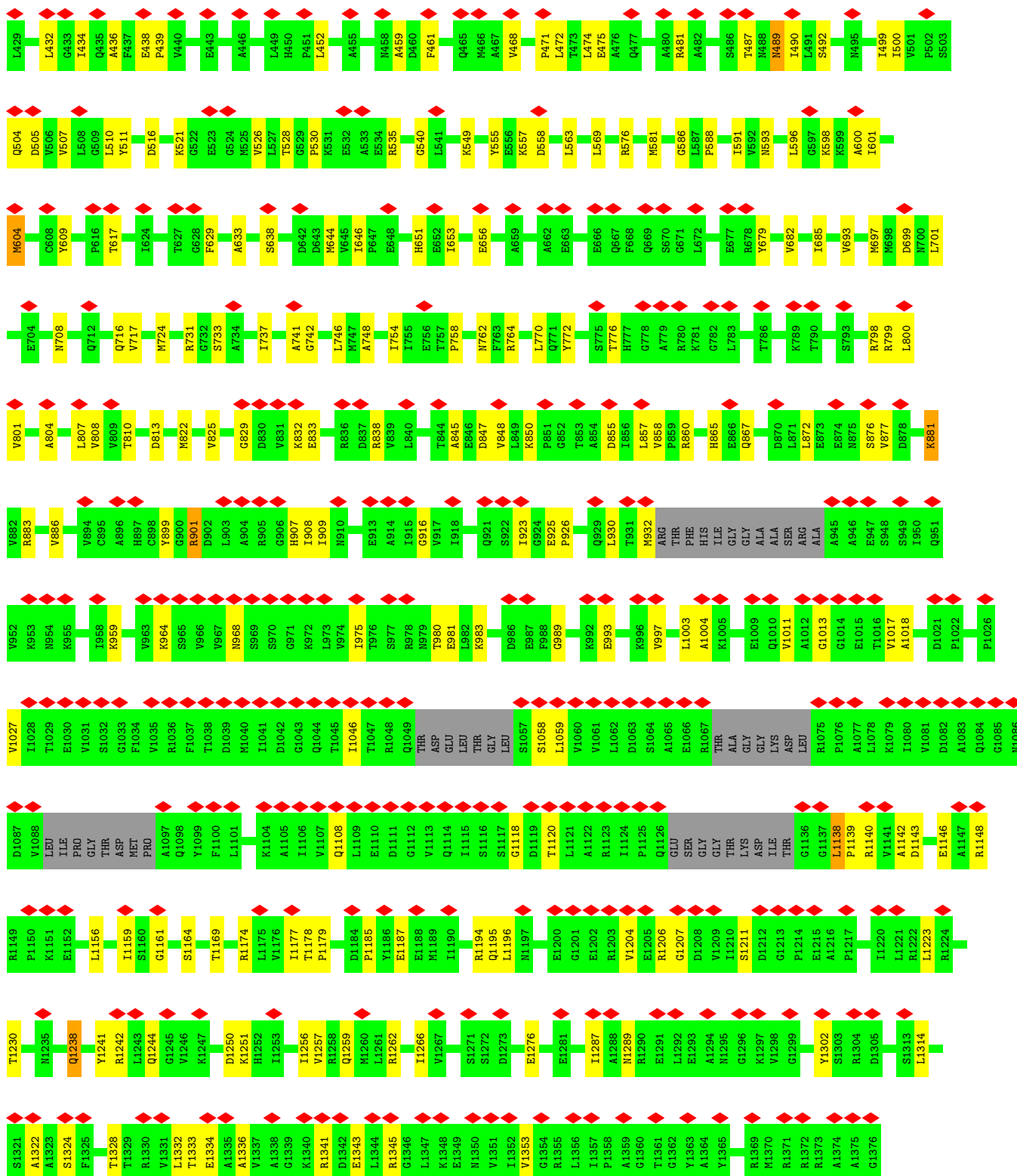




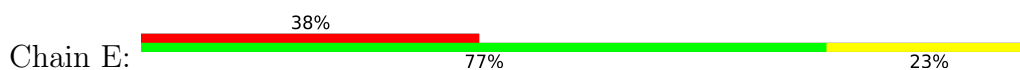
● Molecule 3: DNA-directed RNA polymerase subunit beta'

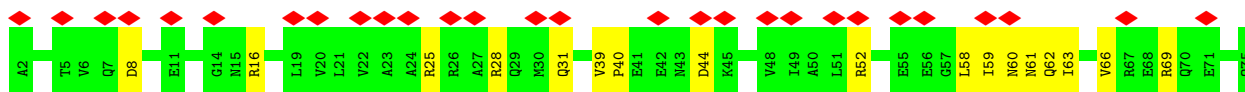




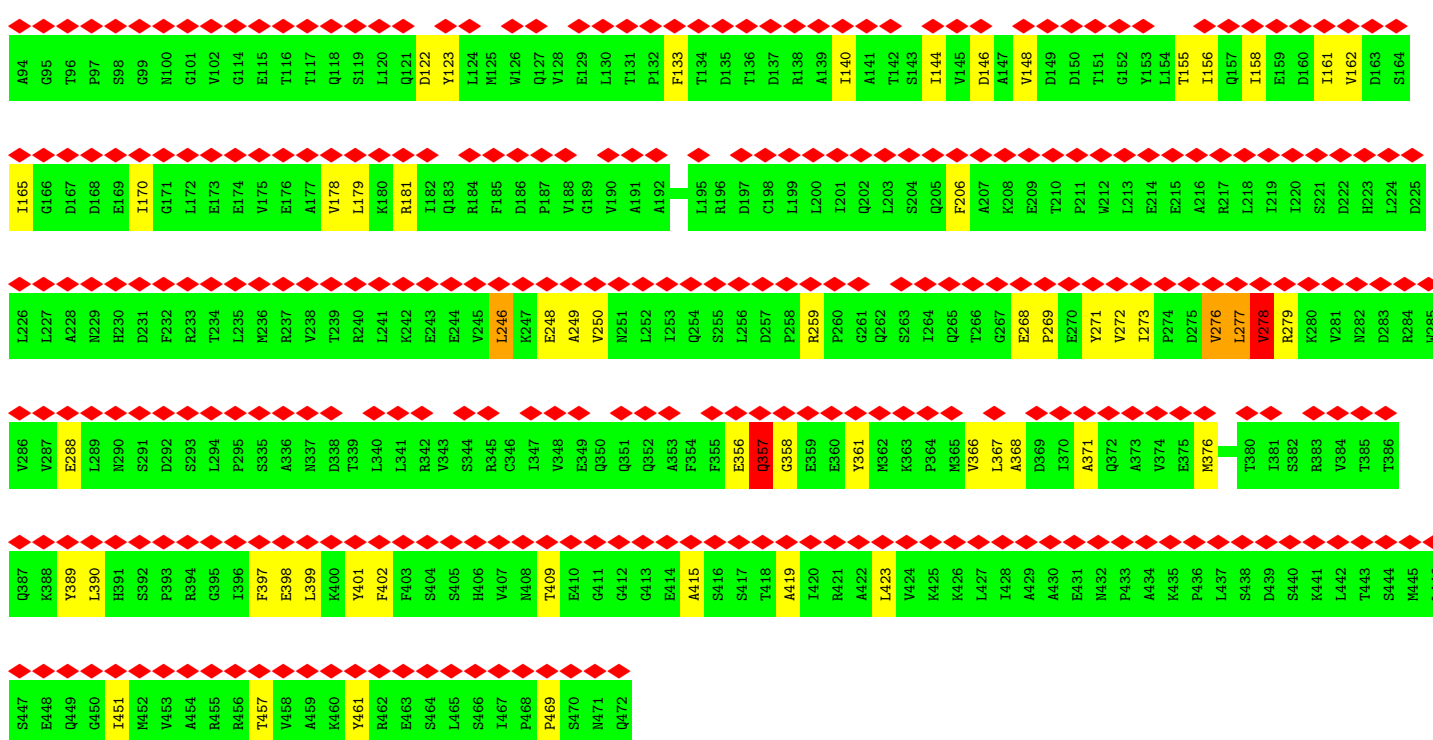
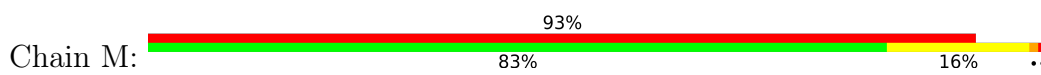


• Molecule 4: DNA-directed RNA polymerase subunit omega

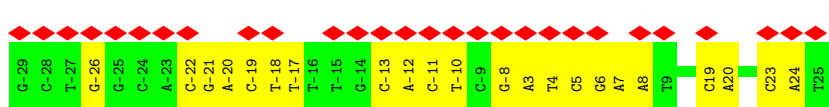




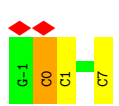
• Molecule 5: RNA polymerase sigma-54 factor



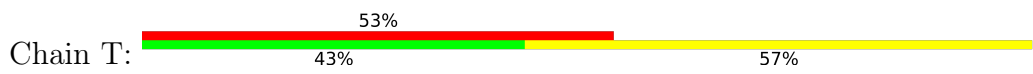
• Molecule 6: DNA (45-MER)

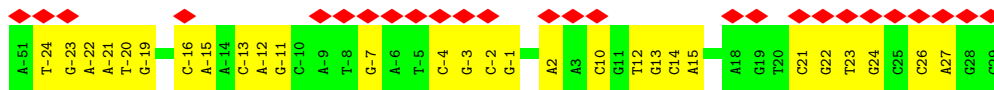


• Molecule 7: RNA (5'-R(P\*GP\*CP\*CP\*GP\*CP\*GP\*AP\*UP\*C)-3')



• Molecule 8: DNA (49-MER)





## 4 Experimental information

Property	Value	Source
EM reconstruction method	SINGLE PARTICLE	Depositor
Imposed symmetry	POINT, Not provided	
Number of particles used	13704	Depositor
Resolution determination method	FSC 0.143 CUT-OFF	Depositor
CTF correction method	PHASE FLIPPING AND AMPLITUDE CORRECTION	Depositor
Microscope	TFS KRIOS	Depositor
Voltage (kV)	300	Depositor
Electron dose ( $e^-/\text{\AA}^2$ )	30	Depositor
Minimum defocus (nm)	1000	Depositor
Maximum defocus (nm)	3000	Depositor
Magnification	Not provided	
Image detector	GATAN K3 (6k x 4k)	Depositor
Maximum map value	0.033	Depositor
Minimum map value	-0.012	Depositor
Average map value	0.000	Depositor
Map value standard deviation	0.002	Depositor
Recommended contour level	0.0085	Depositor
Map size (Å)	214.40001, 214.40001, 214.40001	wwPDB
Map dimensions	200, 200, 200	wwPDB
Map angles (°)	90.0, 90.0, 90.0	wwPDB
Pixel spacing (Å)	1.072, 1.072, 1.072	Depositor

## 5 Model quality [i](#)

### 5.1 Standard geometry [i](#)

Bond lengths and bond angles in the following residue types are not validated in this section: ZN, MG

The Z score for a bond length (or angle) is the number of standard deviations the observed value is removed from the expected value. A bond length (or angle) with  $|Z| > 5$  is considered an outlier worth inspection. RMSZ is the root-mean-square of all Z scores of the bond lengths (or angles).

Mol	Chain	Bond lengths		Bond angles	
		RMSZ	# Z  >5	RMSZ	# Z  >5
1	A	0.25	0/2396	0.52	0/3252
1	B	0.25	0/1754	0.53	0/2388
2	C	0.27	0/10235	0.53	2/13877 (0.0%)
3	D	0.26	0/9788	0.54	2/13301 (0.0%)
4	E	0.26	0/548	0.60	1/743 (0.1%)
5	M	0.25	0/2131	0.51	2/2941 (0.1%)
6	N	0.54	0/1024	0.95	0/1575
7	R	0.27	0/212	0.90	0/328
8	T	0.51	0/1136	0.85	0/1749
All	All	0.29	0/29224	0.58	7/40154 (0.0%)

Chiral center outliers are detected by calculating the chiral volume of a chiral center and verifying if the center is modelled as a planar moiety or with the opposite hand. A planarity outlier is detected by checking planarity of atoms in a peptide group, atoms in a mainchain group or atoms of a sidechain that are expected to be planar.

Mol	Chain	#Chirality outliers	#Planarity outliers
3	D	0	1

There are no bond length outliers.

All (7) bond angle outliers are listed below:

Mol	Chain	Res	Type	Atoms	Z	Observed(°)	Ideal(°)
2	C	237	LEU	CA-CB-CG	6.73	130.77	115.30
3	D	166	LEU	CA-CB-CG	6.08	129.29	115.30
3	D	1185	PRO	CA-N-CD	-5.73	103.48	111.50
5	M	277	LEU	CA-CB-CG	5.53	128.03	115.30
2	C	1166	ASP	CB-CG-OD1	5.20	122.98	118.30
4	E	58	LEU	CA-CB-CG	5.11	127.05	115.30
5	M	278	VAL	CG1-CB-CG2	-5.00	102.89	110.90

There are no chirality outliers.

All (1) planarity outliers are listed below:

Mol	Chain	Res	Type	Group
3	D	1138	LEU	Peptide

## 5.2 Too-close contacts [i](#)

In the following table, the Non-H and H(model) columns list the number of non-hydrogen atoms and hydrogen atoms in the chain respectively. The H(added) column lists the number of hydrogen atoms added and optimized by MolProbity. The Clashes column lists the number of clashes within the asymmetric unit, whereas Symm-Clashes lists symmetry-related clashes.

Mol	Chain	Non-H	H(model)	H(added)	Clashes	Symm-Clashes
1	A	2365	0	2387	41	0
1	B	1735	0	1724	42	0
2	C	10080	0	9757	235	0
3	D	9654	0	9364	222	0
4	E	546	0	537	12	0
5	M	2103	0	1677	40	0
6	N	917	0	511	32	0
7	R	191	0	98	2	0
8	T	1011	0	549	22	0
9	D	1	0	0	0	0
10	D	2	0	0	0	0
All	All	28605	0	26604	583	0

The all-atom clashscore is defined as the number of clashes found per 1000 atoms (including hydrogen atoms). The all-atom clashscore for this structure is 11.

All (583) close contacts within the same asymmetric unit are listed below, sorted by their clash magnitude.

Atom-1	Atom-2	Interatomic distance (Å)	Clash overlap (Å)
2:C:542:ARG:HH21	6:N:8:DA:H5''	1.34	0.91
6:N:-10:DT:O4	8:T:10:DC:N4	2.17	0.78
2:C:960:LEU:HD23	2:C:1032:LYS:HZ2	1.48	0.77
3:D:36:GLY:HA3	3:D:61:ILE:HG21	1.67	0.76
3:D:746:LEU:HD23	3:D:758:PRO:HB3	1.68	0.74
3:D:115:TRP:HZ3	3:D:308:ASP:HB2	1.54	0.72
2:C:1033:ARG:NH1	2:C:1037:THR:OG1	2.24	0.71
2:C:1070:HIS:NE2	2:C:1114:GLU:OE1	2.23	0.71
2:C:1276:TRP:HH2	3:D:798:ARG:HG2	1.55	0.71

*Continued on next page...*

*Continued from previous page...*

Atom-1	Atom-2	Interatomic distance (Å)	Clash overlap (Å)
3:D:259:ARG:HD3	8:T:2:DA:H61	1.56	0.70
3:D:311:ARG:NH2	8:T:-11:DG:OP1	2.24	0.70
3:D:799:ARG:NH1	3:D:1146:GLU:OE1	2.24	0.70
5:M:277:LEU:O	5:M:278:VAL:HG23	1.92	0.70
3:D:300:GLN:NE2	3:D:304:ASP:OD2	2.25	0.69
2:C:870:ILE:HG12	2:C:884:VAL:HG12	1.75	0.68
2:C:720:ARG:HE	2:C:736:VAL:HG11	1.58	0.68
1:B:133:LEU:HD22	1:B:134:THR:H	1.58	0.68
3:D:800:LEU:HD22	3:D:1256:ILE:HD13	1.75	0.68
3:D:1177:ILE:HG13	3:D:1179:PRO:HD3	1.76	0.67
6:N:-20:DA:H2''	6:N:-19:DC:H5''	1.76	0.67
3:D:596:LEU:HA	3:D:600:ALA:HB3	1.77	0.67
3:D:245:LEU:O	3:D:250:ARG:NH1	2.29	0.66
2:C:1254:VAL:HG12	2:C:1255:THR:HG23	1.78	0.66
3:D:342:LEU:HD22	3:D:1324:SER:HB2	1.78	0.66
8:T:-2:DC:H2'	8:T:-1:DG:C8	2.31	0.66
2:C:1082:ILE:H	2:C:1082:ILE:HD12	1.60	0.66
1:B:104:LYS:HD2	1:B:110:VAL:HG22	1.78	0.66
2:C:105:TYR:HA	2:C:113:THR:HA	1.78	0.66
3:D:269:TYR:O	3:D:273:ILE:HD12	1.96	0.65
1:A:83:LEU:HD13	2:C:694:ARG:HH11	1.61	0.65
3:D:845:ALA:HB3	3:D:881:LYS:HG2	1.78	0.65
1:B:74:VAL:HA	1:B:134:THR:HA	1.77	0.65
2:C:310:ILE:HG13	2:C:321:LEU:HD11	1.78	0.65
2:C:1061:GLN:NE2	2:C:1240:ASP:OD1	2.29	0.65
5:M:398:GLU:HG3	5:M:401:TYR:HB2	1.79	0.64
6:N:-13:DC:H2''	6:N:-12:DA:C8	2.30	0.64
3:D:923:ILE:HD12	3:D:1256:ILE:HD12	1.80	0.64
5:M:277:LEU:HD21	5:M:288:GLU:HG3	1.78	0.64
2:C:525:THR:HG21	2:C:687:ARG:HD2	1.80	0.64
3:D:105:ILE:HD11	3:D:242:LEU:HD23	1.78	0.64
3:D:1266:ILE:HD11	3:D:1276:GLU:HG2	1.79	0.64
3:D:126:LEU:HD11	3:D:223:LEU:HD13	1.80	0.64
5:M:140:ILE:HD11	5:M:178:VAL:HG21	1.78	0.64
1:A:307:LEU:HD22	1:A:312:LEU:HB2	1.81	0.63
2:C:618:GLN:HE22	3:D:770:LEU:HD23	1.63	0.63
3:D:17:PHE:HZ	3:D:1353:VAL:HG11	1.63	0.63
5:M:144:ILE:HD11	5:M:179:LEU:HD13	1.81	0.63
2:C:1072:ASN:ND2	2:C:1111:GLN:OE1	2.32	0.63
2:C:678:ARG:NH1	2:C:1071:GLY:O	2.32	0.63
2:C:12:ARG:NH1	2:C:1182:ILE:O	2.32	0.62

*Continued on next page...*

Continued from previous page...

Atom-1	Atom-2	Interatomic distance (Å)	Clash overlap (Å)
1:A:235:ARG:H	1:B:218:ARG:HH12	1.47	0.62
3:D:644:MET:O	3:D:764:ARG:NH1	2.32	0.62
2:C:819:SER:HB2	2:C:1085:MET:HG3	1.80	0.62
2:C:1025:PHE:HA	2:C:1028:LYS:HE3	1.80	0.62
2:C:176:ILE:HG13	2:C:184:LEU:HD23	1.81	0.62
1:A:300:LEU:HA	1:A:303:ILE:HD12	1.82	0.62
2:C:354:ASP:OD1	2:C:356:THR:OG1	2.15	0.62
2:C:1291:LEU:HD13	3:D:345:LYS:HD2	1.81	0.62
3:D:162:GLU:O	3:D:166:LEU:HD12	2.00	0.62
3:D:422:LEU:HA	3:D:436:ALA:HA	1.80	0.62
2:C:719:LYS:HE3	2:C:719:LYS:HA	1.82	0.61
2:C:1269:ARG:NH1	3:D:344:GLY:O	2.33	0.61
3:D:492:SER:HB3	3:D:499:ILE:HB	1.82	0.61
1:B:176:CYS:SG	3:D:535:ARG:NH2	2.74	0.61
2:C:12:ARG:HD3	2:C:1183:ALA:HB2	1.81	0.61
6:N:3:DA:H2''	6:N:4:DT:H5'	1.82	0.61
2:C:241:LEU:HD11	2:C:285:ILE:HG12	1.82	0.61
2:C:929:ILE:HD11	2:C:1055:ALA:HB2	1.82	0.61
2:C:1295:SER:OG	3:D:346:ARG:O	2.18	0.61
3:D:848:VAL:HG22	3:D:858:VAL:HG22	1.82	0.61
1:B:179:PRO:HG2	1:B:211:ILE:HD12	1.83	0.61
2:C:870:ILE:HB	2:C:944:ARG:HH12	1.66	0.61
5:M:415:ALA:HB1	5:M:419:ALA:HB3	1.83	0.60
2:C:542:ARG:NH2	6:N:8:DA:H5''	2.13	0.60
2:C:715:THR:HG22	2:C:785:ASP:HA	1.81	0.60
3:D:932:MET:HG3	3:D:1139:PRO:HD3	1.81	0.60
3:D:1164:SER:HB3	3:D:1178:THR:H	1.66	0.60
5:M:398:GLU:N	5:M:398:GLU:OE1	2.35	0.60
1:B:59:VAL:HG12	1:B:144:ILE:HG23	1.84	0.60
3:D:54:ASP:OD1	3:D:60:ARG:NH2	2.35	0.60
3:D:281:ARG:NH2	6:N:-10:DT:H71	2.16	0.60
4:E:44:ASP:OD2	4:E:52:ARG:NH1	2.35	0.60
1:A:252:ILE:HG23	1:A:253:LEU:HD12	1.84	0.60
2:C:1117:LEU:HD21	2:C:1182:ILE:HD11	1.83	0.59
2:C:1243:MET:HG3	3:D:353:SER:HB2	1.84	0.59
3:D:845:ALA:HB2	3:D:883:ARG:HG2	1.82	0.59
2:C:402:ARG:NH2	2:C:419:ILE:O	2.36	0.59
3:D:1169:THR:HB	3:D:1174:ARG:HA	1.85	0.59
2:C:808:ASN:H	3:D:633:ALA:HB2	1.68	0.59
3:D:334:LYS:HG2	3:D:339:ARG:NH2	2.17	0.59
2:C:473:ARG:NH2	2:C:474:ALA:HA	2.17	0.59

Continued on next page...



*Continued from previous page...*

Atom-1	Atom-2	Interatomic distance (Å)	Clash overlap (Å)
3:D:438:GLU:OE2	3:D:481:ARG:NH2	2.32	0.59
2:C:317:LEU:HD13	2:C:322:LEU:HD21	1.85	0.59
2:C:1120:ALA:HB2	2:C:1199:LEU:HG	1.84	0.59
3:D:872:LEU:HG	3:D:877:VAL:HG11	1.85	0.59
3:D:309:ASN:HD21	3:D:316:ILE:HG12	1.68	0.58
2:C:821:ARG:HH21	2:C:1082:ILE:HG21	1.68	0.58
2:C:870:ILE:HB	2:C:944:ARG:NH1	2.18	0.58
1:B:60:GLU:HB2	1:B:143:ARG:HG2	1.85	0.58
3:D:980:THR:OG1	3:D:997:VAL:O	2.21	0.58
1:B:100:LEU:HD12	1:B:115:ILE:HG21	1.86	0.58
2:C:1253:LEU:O	3:D:99:ARG:NH1	2.36	0.58
3:D:1156:LEU:HD23	3:D:1207:GLY:HA2	1.85	0.58
3:D:113:HIS:CD2	3:D:307:LEU:HD23	2.38	0.58
5:M:276:VAL:HG21	5:M:389:TYR:H	1.69	0.58
1:A:59:VAL:HG12	1:A:144:ILE:HG23	1.86	0.58
2:C:696:ASP:OD1	2:C:799:ASN:ND2	2.37	0.58
3:D:320:ASN:HD22	3:D:322:ARG:HD3	1.69	0.58
2:C:528:ARG:NH2	2:C:576:SER:O	2.35	0.57
2:C:580:GLN:HG2	2:C:605:TYR:HE1	1.69	0.57
3:D:109:SER:OG	3:D:296:LYS:NZ	2.38	0.57
4:E:60:ASN:OD1	4:E:61:ASN:N	2.36	0.57
3:D:1343:GLU:OE1	3:D:1345:ARG:NH2	2.38	0.57
2:C:61:SER:HB3	2:C:479:LEU:HB2	1.86	0.57
1:A:313:SER:HB3	5:M:181:ARG:HE	1.70	0.57
3:D:822:MET:SD	3:D:838:ARG:NH2	2.77	0.57
2:C:921:PRO:HG2	2:C:924:VAL:HG21	1.85	0.57
3:D:93:THR:HG22	3:D:94:GLN:H	1.69	0.57
5:M:140:ILE:O	5:M:144:ILE:HG22	2.04	0.57
2:C:360:LEU:HD11	2:C:378:ARG:HD3	1.86	0.57
2:C:448:LEU:HD23	2:C:557:ARG:HD2	1.87	0.57
2:C:394:ARG:O	2:C:394:ARG:NH1	2.38	0.56
2:C:1311:GLY:O	4:E:31:GLN:NE2	2.38	0.56
3:D:262:THR:OG1	3:D:270:ARG:NH2	2.37	0.56
2:C:91:THR:HG23	2:C:138:ILE:HG22	1.87	0.56
2:C:804:PHE:HE1	2:C:1115:THR:HG21	1.69	0.56
6:N:3:DA:H2'	6:N:4:DT:C6	2.40	0.56
2:C:251:ALA:HB3	2:C:266:GLY:H	1.69	0.56
2:C:934:PHE:HD2	2:C:1049:ILE:HD11	1.70	0.56
2:C:1117:LEU:HD13	2:C:1195:ILE:HG12	1.86	0.56
3:D:901:ARG:O	3:D:1251:LYS:NZ	2.37	0.56
5:M:246:LEU:HA	5:M:249:ALA:HB3	1.88	0.56

*Continued on next page...*

*Continued from previous page...*

Atom-1	Atom-2	Interatomic distance (Å)	Clash overlap (Å)
1:B:90:VAL:HG21	1:B:146:VAL:HG21	1.88	0.56
4:E:62:GLN:O	4:E:66:VAL:HG13	2.06	0.56
2:C:50:GLU:OE2	2:C:70:TYR:OH	2.20	0.56
3:D:591:ILE:HD11	3:D:604:MET:HA	1.87	0.56
2:C:297:VAL:HA	2:C:335:THR:HG22	1.86	0.56
1:A:98:VAL:HG11	1:A:121:VAL:HG21	1.88	0.56
2:C:637:ARG:HD3	3:D:770:LEU:HD21	1.87	0.56
2:C:1262:LYS:HG2	2:C:1263:ALA:H	1.71	0.56
3:D:86:GLU:H	3:D:86:GLU:CD	2.09	0.56
1:A:270:LEU:HD22	1:A:275:ILE:HD12	1.88	0.56
3:D:1333:THR:OG1	3:D:1334:GLU:OE1	2.22	0.56
2:C:866:ASP:OD1	2:C:944:ARG:NH1	2.39	0.55
3:D:71:LEU:H	3:D:90:VAL:HG11	1.71	0.55
3:D:381:ILE:HD11	3:D:412:LEU:HD13	1.88	0.55
3:D:848:VAL:HG23	3:D:857:LEU:HB3	1.88	0.55
1:A:283:GLN:OE1	1:A:321:TRP:NE1	2.33	0.55
1:B:86:LYS:HD2	3:D:528:THR:HG23	1.88	0.55
3:D:202:ARG:O	3:D:206:ASN:ND2	2.39	0.55
1:B:92:VAL:HG12	1:B:121:VAL:HG22	1.88	0.55
2:C:691:PRO:HB3	2:C:788:SER:HB3	1.88	0.55
1:B:127:GLN:N	1:B:127:GLN:OE1	2.39	0.55
3:D:422:LEU:HD13	3:D:434:ILE:HD11	1.88	0.55
3:D:504:GLN:OE1	3:D:731:ARG:NH2	2.40	0.55
1:B:83:LEU:HD13	3:D:526:VAL:HG22	1.87	0.55
2:C:796:LEU:HD23	2:C:796:LEU:H	1.72	0.55
2:C:1063:GLY:HA3	2:C:1239:VAL:HG21	1.90	0.54
2:C:739:ASP:OD1	2:C:739:ASP:N	2.39	0.54
2:C:912:ASP:OD1	2:C:913:VAL:N	2.39	0.54
3:D:530:PRO:HB2	3:D:581:MET:HG3	1.89	0.54
3:D:510:LEU:HD12	3:D:601:ILE:HD12	1.90	0.54
2:C:232:ILE:HA	2:C:237:LEU:HA	1.89	0.54
2:C:346:TYR:O	2:C:348:SER:N	2.35	0.54
3:D:113:HIS:CD2	3:D:115:TRP:H	2.26	0.54
3:D:264:ASP:OD1	3:D:264:ASP:N	2.36	0.54
3:D:425:ARG:HD2	3:D:459:ALA:HB2	1.89	0.54
1:A:182:ARG:NH1	1:A:204:GLU:OE2	2.37	0.54
2:C:542:ARG:HH22	6:N:7:DA:H5'	1.71	0.54
2:C:933:VAL:HG22	2:C:1050:VAL:HG12	1.88	0.54
2:C:1271:GLY:N	2:C:1274:GLU:OE1	2.34	0.54
3:D:1003:LEU:HA	3:D:1018:ALA:HA	1.90	0.54
3:D:39:LYS:NZ	3:D:54:ASP:OD2	2.40	0.54

*Continued on next page...*

*Continued from previous page...*

Atom-1	Atom-2	Interatomic distance (Å)	Clash overlap (Å)
3:D:981:GLU:N	3:D:981:GLU:OE1	2.41	0.54
3:D:1011:VAL:HG22	3:D:1013:GLY:H	1.73	0.54
2:C:467:GLY:O	2:C:471:VAL:HG12	2.08	0.53
2:C:561:ILE:HD11	3:D:772:TYR:HE2	1.74	0.53
2:C:944:ARG:O	2:C:948:ILE:HD12	2.09	0.53
2:C:949:GLU:HB3	2:C:1037:THR:HG22	1.90	0.53
2:C:189:ASP:HB2	2:C:193:ASN:H	1.73	0.53
2:C:196:VAL:HG21	2:C:209:ILE:HD11	1.90	0.53
1:B:12:ARG:O	1:B:12:ARG:NH1	2.34	0.53
3:D:521:LYS:NZ	3:D:540:GLY:O	2.41	0.53
3:D:115:TRP:HH2	3:D:328:ALA:HB2	1.74	0.53
2:C:52:ALA:HA	2:C:465:ARG:HH12	1.73	0.53
2:C:138:ILE:O	2:C:141:THR:OG1	2.27	0.53
2:C:515:MET:HE1	2:C:527:LYS:HE3	1.91	0.53
3:D:186:GLN:HG3	3:D:238:ILE:HD11	1.91	0.53
3:D:336:GLY:HA2	3:D:1328:THR:HG21	1.91	0.53
3:D:489:ASN:ND2	3:D:489:ASN:O	2.42	0.53
2:C:700:VAL:HG11	2:C:1114:GLU:HG3	1.90	0.53
3:D:825:VAL:HB	3:D:833:GLU:HB3	1.90	0.53
6:N:5:DC:H2'	6:N:6:DG:C4	2.43	0.53
3:D:267:ASP:HA	3:D:270:ARG:HG2	1.91	0.53
5:M:148:VAL:HA	5:M:155:THR:HG22	1.90	0.52
2:C:598:VAL:HG23	2:C:627:GLY:HA3	1.91	0.52
3:D:1238:GLN:NE2	3:D:1250:ASP:OD1	2.42	0.52
4:E:69:ARG:NH1	4:E:69:ARG:HB2	2.23	0.52
5:M:399:LEU:HD12	5:M:402:PHE:HZ	1.73	0.52
6:N:6:DG:H2''	6:N:7:DA:O4'	2.09	0.52
2:C:557:ARG:NH2	2:C:611:GLU:OE1	2.33	0.52
6:N:5:DC:H2'	6:N:6:DG:C8	2.44	0.52
2:C:248:GLY:HA2	2:C:269:ILE:HD11	1.92	0.52
3:D:432:LEU:HD13	3:D:499:ILE:HG21	1.90	0.52
3:D:932:MET:HA	3:D:1138:LEU:H	1.75	0.52
3:D:1027:VAL:H	3:D:1120:THR:HG21	1.74	0.52
2:C:169:LYS:NZ	2:C:192:ASP:OD1	2.42	0.52
3:D:475:GLU:OE2	4:E:28:ARG:NH2	2.42	0.52
3:D:591:ILE:HD11	3:D:604:MET:HG3	1.92	0.52
1:B:109:PRO:HA	1:B:132:HIS:HA	1.92	0.52
2:C:94:ALA:HB2	2:C:129:LEU:HD11	1.90	0.52
3:D:289:ASP:HB3	3:D:293:ARG:HH12	1.73	0.52
3:D:30:ILE:HD13	3:D:243:PRO:HD3	1.90	0.52
3:D:474:LEU:HD12	4:E:28:ARG:HE	1.75	0.52

*Continued on next page...*

Continued from previous page...

Atom-1	Atom-2	Interatomic distance (Å)	Clash overlap (Å)
5:M:246:LEU:O	5:M:250:VAL:HG12	2.09	0.52
3:D:959:LYS:N	3:D:983:LYS:O	2.41	0.52
8:T:-4:DC:H2'	8:T:-3:DG:H8	1.75	0.52
1:B:74:VAL:HG12	1:B:134:THR:HG23	1.91	0.52
2:C:227:LYS:HA	2:C:336:LEU:HA	1.91	0.52
3:D:907:HIS:ND1	3:D:908:ILE:O	2.39	0.51
3:D:741:ALA:O	3:D:762:ASN:ND2	2.43	0.51
3:D:1140:ARG:HA	3:D:1143:ASP:HB2	1.93	0.51
2:C:478:ARG:HB2	2:C:492:MET:SD	2.50	0.51
3:D:748:ALA:HB3	3:D:754:ILE:HA	1.91	0.51
1:A:158:ARG:HH21	1:A:172:LEU:HD22	1.76	0.51
3:D:77:ARG:HD3	5:M:156:ILE:HG21	1.92	0.51
1:B:113:ALA:HB2	1:B:126:PRO:HB2	1.93	0.51
2:C:841:ARG:HH12	5:M:272:VAL:HG13	1.75	0.51
2:C:1253:LEU:HD12	2:C:1253:LEU:H	1.74	0.51
2:C:171:LEU:H	2:C:171:LEU:HD23	1.75	0.51
2:C:237:LEU:HD23	2:C:237:LEU:O	2.10	0.51
2:C:524:ILE:HD11	2:C:712:SER:HA	1.91	0.51
3:D:591:ILE:CD1	3:D:604:MET:HG3	2.41	0.51
3:D:425:ARG:NH2	7:R:7:C:O2'	2.44	0.51
1:A:92:VAL:HG12	1:A:121:VAL:HG22	1.93	0.50
2:C:30:ILE:HD11	2:C:528:ARG:HA	1.93	0.50
3:D:330:MET:O	3:D:330:MET:HG3	2.10	0.50
3:D:319:SER:HB3	8:T:2:DA:H4'	1.93	0.50
1:A:182:ARG:NH1	2:C:1090:ASN:O	2.44	0.50
2:C:542:ARG:HH12	6:N:7:DA:P	2.35	0.50
3:D:1142:ALA:O	3:D:1146:GLU:HG2	2.11	0.50
3:D:114:ILE:HG21	3:D:308:ASP:HB3	1.94	0.50
3:D:964:LYS:H	3:D:975:ILE:HG23	1.76	0.50
6:N:23:DC:H2''	6:N:24:DA:C8	2.46	0.50
2:C:551:HIS:ND1	2:C:553:THR:HG23	2.26	0.50
3:D:35:PHE:CD1	3:D:101:ARG:HG2	2.46	0.50
3:D:516:ASP:OD1	3:D:516:ASP:N	2.40	0.50
3:D:1259:GLN:OE1	3:D:1262:ARG:NH1	2.45	0.50
1:B:112:ALA:HB3	1:B:126:PRO:HA	1.94	0.50
2:C:71:VAL:O	2:C:99:LYS:HB2	2.11	0.50
2:C:922:ASN:OD1	2:C:923:GLY:N	2.45	0.50
6:N:5:DC:H2'	6:N:6:DG:C5	2.47	0.50
2:C:1304:MET:HE2	3:D:472:LEU:HG	1.93	0.50
3:D:334:LYS:HG3	3:D:338:PHE:HB2	1.95	0.49
2:C:17:LYS:NZ	2:C:1194:GLU:OE2	2.45	0.49

Continued on next page...

Continued from previous page...

Atom-1	Atom-2	Interatomic distance (Å)	Clash overlap (Å)
3:D:281:ARG:HH22	6:N:-10:DT:H71	1.77	0.49
5:M:277:LEU:HG	5:M:278:VAL:H	1.77	0.49
8:T:21:DC:H2''	8:T:22:DG:C8	2.46	0.49
1:B:71:LYS:O	1:B:74:VAL:HG13	2.11	0.49
2:C:54:ARG:HG2	2:C:54:ARG:HH11	1.77	0.49
2:C:517:GLN:HG3	2:C:760:ASN:HB2	1.94	0.49
2:C:956:ALA:HB1	2:C:1032:LYS:NZ	2.27	0.49
1:A:131:CYS:SG	1:A:132:HIS:N	2.85	0.49
3:D:1194:ARG:NH1	3:D:1211:SER:OG	2.45	0.49
2:C:224:PHE:HA	2:C:430:LYS:NZ	2.26	0.49
2:C:325:LEU:HD13	2:C:333:ILE:HD11	1.95	0.49
3:D:101:ARG:HG3	3:D:101:ARG:HH11	1.78	0.49
2:C:246:LEU:HD23	2:C:246:LEU:H	1.77	0.49
2:C:249:GLU:H	2:C:269:ILE:HD11	1.77	0.49
2:C:889:PRO:HA	2:C:913:VAL:HG23	1.94	0.49
3:D:9:LYS:HA	3:D:12:THR:HG22	1.95	0.49
3:D:1196:LEU:HD23	3:D:1196:LEU:H	1.77	0.49
2:C:12:ARG:NE	2:C:793:GLU:OE2	2.29	0.49
3:D:281:ARG:NH2	6:N:-11:DC:H2'	2.28	0.49
3:D:588:PRO:O	3:D:591:ILE:HG22	2.13	0.49
1:B:41:ASN:OD1	1:B:44:ARG:NH2	2.46	0.49
3:D:357:VAL:HB	3:D:461:PHE:CE2	2.47	0.48
3:D:555:TYR:HB2	3:D:586:GLY:H	1.78	0.48
3:D:646:ILE:HD11	3:D:762:ASN:HD21	1.78	0.48
2:C:412:GLU:OE1	2:C:412:GLU:N	2.34	0.48
3:D:197:GLU:O	3:D:201:LEU:HD13	2.12	0.48
6:N:-22:DC:H2''	6:N:-21:DG:C8	2.48	0.48
3:D:134:ASP:O	3:D:138:VAL:HG12	2.12	0.48
3:D:416:ILE:HG23	3:D:439:PRO:HG2	1.94	0.48
3:D:925:GLU:HB3	3:D:926:PRO:HD3	1.95	0.48
5:M:279:ARG:HH12	5:M:357:GLN:HE21	1.62	0.48
1:B:69:SER:HB3	1:B:78:ILE:HD12	1.95	0.48
1:B:219:ARG:O	1:B:223:ILE:HG23	2.14	0.48
3:D:195:GLU:H	3:D:195:GLU:CD	2.16	0.48
5:M:419:ALA:O	5:M:423:LEU:HG	2.14	0.48
1:B:81:ILE:HD12	1:B:82:LEU:N	2.29	0.48
2:C:146:VAL:HG12	2:C:529:ARG:HB3	1.96	0.48
2:C:162:GLY:HA2	2:C:170:VAL:HA	1.96	0.48
2:C:512:SER:O	2:C:512:SER:OG	2.32	0.48
2:C:1065:LYS:HE2	2:C:1235:LEU:HD12	1.95	0.48
1:B:30:PRO:HG3	1:B:192:VAL:HG11	1.95	0.47

Continued on next page...

Continued from previous page...

Atom-1	Atom-2	Interatomic distance (Å)	Clash overlap (Å)
3:D:53:ARG:NH2	3:D:60:ARG:HE	2.12	0.47
3:D:275:ARG:HG2	3:D:275:ARG:HH11	1.79	0.47
1:A:273:GLU:HG3	1:A:275:ILE:HG13	1.96	0.47
2:C:1165:SER:OG	2:C:1166:ASP:N	2.48	0.47
3:D:398:LYS:O	3:D:402:GLU:HG2	2.15	0.47
3:D:832:LYS:HE3	3:D:1242:ARG:HD2	1.96	0.47
3:D:975:ILE:HG21	3:D:980:THR:HG21	1.96	0.47
8:T:-22:DA:H2''	8:T:-21:DA:C8	2.49	0.47
1:A:13:LEU:HB2	1:B:231:PHE:CE1	2.49	0.47
3:D:507:VAL:HG11	3:D:598:LYS:HB2	1.96	0.47
3:D:930:LEU:HD22	3:D:1244:GLN:HG3	1.96	0.47
4:E:39:VAL:HG13	4:E:40:PRO:HD2	1.96	0.47
5:M:356:GLU:O	5:M:358:GLY:N	2.48	0.47
1:A:31:LEU:HD13	1:A:36:GLY:HA2	1.96	0.47
1:A:185:TYR:HB2	1:A:201:LEU:HD11	1.97	0.47
2:C:99:LYS:HE2	2:C:99:LYS:HA	1.96	0.47
2:C:200:ARG:NH1	6:N:8:DA:OP1	2.47	0.47
2:C:524:ILE:O	2:C:528:ARG:HG2	2.15	0.47
2:C:1308:ILE:HG21	3:D:379:PRO:HB2	1.97	0.47
3:D:112:ALA:HA	3:D:238:ILE:HG22	1.96	0.47
1:A:166:ARG:HH11	1:A:170:ARG:HG2	1.78	0.47
1:B:46:ILE:HD11	1:B:224:LEU:HD13	1.95	0.47
2:C:132:ASP:N	2:C:132:ASP:OD1	2.46	0.47
2:C:556:GLY:HA3	2:C:589:THR:HG21	1.96	0.47
2:C:874:GLY:H	2:C:928:VAL:HG23	1.79	0.47
2:C:1144:PHE:HA	2:C:1147:ARG:HG2	1.96	0.47
3:D:378:LYS:HG2	3:D:382:TYR:CZ	2.50	0.47
1:A:75:GLN:HE21	2:C:727:VAL:HG11	1.80	0.47
2:C:638:SER:OG	2:C:639:LYS:N	2.48	0.47
3:D:374:LEU:HB2	3:D:412:LEU:HD22	1.95	0.47
3:D:426:ALA:HB3	3:D:427:PRO:HD3	1.96	0.47
3:D:1332:LEU:O	3:D:1336:ALA:N	2.46	0.47
5:M:248:GLU:OE1	5:M:248:GLU:N	2.43	0.47
8:T:-13:DC:H2''	8:T:-12:DA:H8	1.80	0.47
2:C:65:ASN:HB3	2:C:105:TYR:HB2	1.96	0.47
3:D:364:HIS:HB3	3:D:487:THR:HG23	1.97	0.47
2:C:560:PRO:HB2	3:D:776:THR:HG21	1.96	0.47
5:M:457:THR:O	5:M:461:TYR:N	2.39	0.47
2:C:200:ARG:HH12	6:N:8:DA:P	2.37	0.46
5:M:158:ILE:O	5:M:162:VAL:HG12	2.15	0.46
3:D:1314:LEU:HA	3:D:1322:ALA:HB1	1.97	0.46

Continued on next page...

Continued from previous page...

Atom-1	Atom-2	Interatomic distance (Å)	Clash overlap (Å)
1:B:107:ILE:HD11	1:B:137:ASN:H	1.80	0.46
2:C:1141:LEU:HD21	2:C:1173:ALA:HB2	1.98	0.46
4:E:63:ILE:HA	4:E:66:VAL:HG22	1.97	0.46
2:C:828:PHE:HB3	2:C:1234:LYS:HD2	1.97	0.46
3:D:35:PHE:HD1	3:D:101:ARG:HG2	1.81	0.46
8:T:-20:DT:H2''	8:T:-19:DG:C8	2.50	0.46
2:C:79:VAL:HG23	2:C:80:PHE:CD2	2.51	0.46
2:C:805:MET:HE3	2:C:1086:PRO:HG2	1.97	0.46
3:D:256:ASP:OD1	3:D:256:ASP:N	2.49	0.46
1:A:120:ASP:OD1	1:A:120:ASP:N	2.47	0.46
2:C:19:PRO:HA	2:C:1156:ARG:HD3	1.97	0.46
2:C:1226:THR:HG22	3:D:638:SER:HB2	1.98	0.46
5:M:366:VAL:HG12	5:M:368:ALA:H	1.81	0.46
8:T:2:DA:H2'	8:T:2:DA:N3	2.29	0.46
2:C:1244:HIS:HE1	2:C:1265:PHE:HA	1.81	0.46
6:N:4:DT:H4'	6:N:5:DC:OP1	2.15	0.46
2:C:559:CYS:HB2	2:C:662:SER:HB3	1.98	0.46
2:C:660:VAL:HG13	2:C:661:VAL:HG13	1.98	0.46
3:D:886:VAL:HG21	3:D:1230:THR:HG21	1.98	0.46
3:D:968:ASN:HA	3:D:1118:GLY:HA3	1.97	0.46
1:B:29:GLU:HB2	1:B:200:LYS:HB2	1.98	0.46
3:D:511:TYR:HE2	3:D:724:MET:HG2	1.81	0.46
3:D:697:MET:SD	3:D:741:ALA:HB3	2.55	0.46
3:D:682:VAL:HA	3:D:685:ILE:HG22	1.98	0.45
1:A:102:LEU:HB3	1:A:115:ILE:HG12	1.97	0.45
2:C:590:PRO:HB3	2:C:605:TYR:CE2	2.51	0.45
2:C:447:HIS:CE1	2:C:553:THR:HG21	2.52	0.45
2:C:696:ASP:O	2:C:795:ALA:HB1	2.16	0.45
5:M:276:VAL:HG21	5:M:389:TYR:HB2	1.98	0.45
6:N:-18:DT:C6	6:N:-17:DT:H72	2.51	0.45
1:A:297:LYS:O	1:A:297:LYS:NZ	2.39	0.45
2:C:732:ILE:HD11	2:C:769:PRO:HB3	1.99	0.45
2:C:1340:GLU:OE1	3:D:1341:ARG:NH2	2.35	0.45
3:D:452:LEU:HB3	3:D:500:ILE:HG23	1.99	0.45
3:D:653:ILE:HD11	3:D:693:VAL:HB	1.98	0.45
2:C:152:SER:HB3	2:C:452:ARG:HB2	1.98	0.45
2:C:1192:GLU:OE1	2:C:1192:GLU:N	2.47	0.45
3:D:95:THR:O	3:D:95:THR:OG1	2.29	0.45
8:T:14:DC:H2''	8:T:15:DA:C8	2.51	0.45
2:C:582:ASN:HB2	2:C:586:PHE:H	1.81	0.45
3:D:1143:ASP:OD1	3:D:1148:ARG:NH1	2.48	0.45

Continued on next page...

*Continued from previous page...*

Atom-1	Atom-2	Interatomic distance (Å)	Clash overlap (Å)
1:A:297:LYS:HA	1:A:297:LYS:HD2	1.84	0.45
2:C:70:TYR:HA	2:C:100:LEU:HA	1.98	0.45
2:C:150:HIS:CD2	2:C:454:ARG:HE	2.34	0.45
2:C:155:VAL:HG22	2:C:176:ILE:HD13	1.98	0.45
3:D:259:ARG:HD3	8:T:2:DA:N6	2.30	0.45
5:M:288:GLU:OE2	5:M:288:GLU:N	2.27	0.45
2:C:662:SER:O	2:C:666:SER:OG	2.21	0.45
2:C:728:ASP:OD1	2:C:729:ALA:N	2.48	0.45
3:D:203:GLU:HA	3:D:206:ASN:HD21	1.82	0.45
6:N:19:DC:H2''	6:N:20:DA:C8	2.51	0.45
2:C:102:LEU:HD23	2:C:102:LEU:HA	1.85	0.45
2:C:419:ILE:HD12	2:C:420:LEU:H	1.82	0.45
2:C:420:LEU:H	2:C:420:LEU:HD23	1.81	0.45
2:C:884:VAL:HG22	2:C:918:LEU:HB3	1.99	0.45
2:C:432:LEU:O	2:C:435:ILE:HG22	2.18	0.44
2:C:511:LEU:HD11	2:C:534:GLY:HA3	1.99	0.44
2:C:934:PHE:HB2	2:C:1049:ILE:HG12	1.98	0.44
3:D:273:ILE:HD12	3:D:273:ILE:H	1.82	0.44
1:B:219:ARG:HA	1:B:222:THR:HG22	1.99	0.44
1:B:228:LEU:O	1:B:232:VAL:HG23	2.16	0.44
2:C:8:LYS:HG2	2:C:1164:PHE:CZ	2.52	0.44
2:C:770:CYS:N	2:C:783:LEU:O	2.47	0.44
2:C:850:ILE:HG22	2:C:886:LYS:HA	1.98	0.44
3:D:742:GLY:O	3:D:762:ASN:HB3	2.18	0.44
5:M:165:ILE:HG21	5:M:170:ILE:HG12	1.99	0.44
1:A:69:SER:OG	1:A:70:THR:N	2.50	0.44
1:A:313:SER:OG	5:M:181:ARG:NH2	2.42	0.44
2:C:542:ARG:NH2	6:N:7:DA:H5'	2.32	0.44
2:C:957:LYS:HA	2:C:960:LEU:HG	1.99	0.44
2:C:1269:ARG:HA	3:D:346:ARG:HA	1.99	0.44
6:N:7:DA:H3'	6:N:8:DA:H8	1.82	0.44
1:A:122:GLU:N	1:A:122:GLU:OE1	2.50	0.44
2:C:777:VAL:HG13	2:C:781:ASP:HB3	1.98	0.44
2:C:818:VAL:HG22	2:C:1096:ILE:HD13	1.99	0.44
3:D:807:LEU:HD23	3:D:807:LEU:HA	1.80	0.44
3:D:1046:ILE:HD12	3:D:1059:LEU:HD13	1.99	0.44
6:N:-19:DC:C6	6:N:-18:DT:H72	2.52	0.44
1:A:184:ALA:HB2	2:C:1091:GLY:HA3	1.99	0.44
1:B:13:LEU:HD12	1:B:13:LEU:HA	1.82	0.44
3:D:653:ILE:O	3:D:656:GLU:HG2	2.17	0.44
5:M:390:LEU:O	5:M:397:PHE:N	2.51	0.44

*Continued on next page...*



*Continued from previous page...*

Atom-1	Atom-2	Interatomic distance (Å)	Clash overlap (Å)
1:B:77:ASP:OD1	1:B:78:ILE:N	2.51	0.44
2:C:1269:ARG:HH22	3:D:339:ARG:HA	1.83	0.44
1:A:12:ARG:H	1:A:30:PRO:HD2	1.83	0.44
1:B:205:MET:HE1	1:B:217:ILE:HG13	1.99	0.44
2:C:172:TYR:HD1	2:C:435:ILE:HG23	1.83	0.44
2:C:728:ASP:HB3	2:C:731:ARG:H	1.81	0.44
3:D:106:GLU:HG3	3:D:241:VAL:HG22	2.00	0.44
3:D:281:ARG:HH12	6:N:-10:DT:H6	1.65	0.44
3:D:716:GLN:HG2	3:D:717:VAL:N	2.33	0.44
2:C:239:MET:N	2:C:285:ILE:O	2.48	0.44
2:C:848:GLU:HG2	2:C:888:THR:HA	1.99	0.44
1:A:199:ASP:OD1	1:A:200:LYS:N	2.51	0.44
1:B:78:ILE:HA	1:B:81:ILE:HG13	2.00	0.44
2:C:582:ASN:HA	2:C:588:GLU:OE1	2.18	0.44
2:C:582:ASN:N	2:C:586:PHE:O	2.51	0.44
3:D:245:LEU:HB3	3:D:250:ARG:HD3	2.00	0.44
1:A:13:LEU:HB2	1:B:231:PHE:HE1	1.82	0.43
2:C:81:ASP:OD1	2:C:81:ASP:N	2.48	0.43
2:C:1007:LYS:HA	2:C:1011:LEU:HD12	1.99	0.43
3:D:44:ILE:HD11	3:D:260:PHE:HB2	2.00	0.43
5:M:246:LEU:H	5:M:246:LEU:HD12	1.82	0.43
2:C:376:PRO:HB3	2:C:380:ALA:HB3	1.99	0.43
2:C:800:MET:SD	2:C:827:ARG:NH1	2.91	0.43
3:D:53:ARG:HH22	3:D:89:GLY:H	1.65	0.43
3:D:114:ILE:HB	3:D:304:ASP:OD1	2.18	0.43
3:D:426:ALA:HB3	8:T:-7:DG:H21	1.83	0.43
5:M:469:PRO:HB3	6:N:-26:DG:H5"	2.00	0.43
2:C:592:ARG:HD2	2:C:655:VAL:HA	2.00	0.43
3:D:107:LEU:HD22	3:D:299:LEU:HD11	2.01	0.43
3:D:899:TYR:HD1	3:D:909:ILE:HG21	1.83	0.43
1:B:101:THR:O	1:B:116:THR:HG23	2.18	0.43
2:C:630:VAL:HG13	2:C:631:GLU:HG2	2.01	0.43
2:C:898:GLU:O	2:C:901:LEU:HG	2.18	0.43
2:C:942:ASP:OD1	2:C:1048:LYS:NZ	2.45	0.43
3:D:804:ALA:O	3:D:916:GLY:HA3	2.19	0.43
3:D:1058:SER:HA	3:D:1108:GLN:HA	2.01	0.43
2:C:539:THR:HB	2:C:542:ARG:HB2	2.00	0.43
2:C:1172:LEU:O	2:C:1176:LEU:HG	2.18	0.43
2:C:1244:HIS:CE1	2:C:1265:PHE:HA	2.53	0.43
3:D:373:ALA:O	3:D:374:LEU:HB3	2.17	0.43
3:D:1004:ALA:N	3:D:1017:VAL:O	2.45	0.43

*Continued on next page...*

Continued from previous page...

Atom-1	Atom-2	Interatomic distance (Å)	Clash overlap (Å)
2:C:151:ARG:HH22	2:C:175:ARG:HH21	1.67	0.43
3:D:44:ILE:HG22	3:D:51:PRO:HA	2.01	0.43
7:R:0:C:H2'	7:R:1:C:C6	2.53	0.43
1:A:289:LEU:O	1:A:292:THR:OG1	2.24	0.43
2:C:155:VAL:C	2:C:156:PHE:HD1	2.22	0.43
2:C:720:ARG:NE	2:C:736:VAL:HG11	2.30	0.43
2:C:1292:THR:O	2:C:1297:ASP:HB2	2.18	0.43
3:D:337:ARG:O	3:D:342:LEU:HB3	2.18	0.43
2:C:714:VAL:O	2:C:767:GLN:NE2	2.51	0.43
2:C:843:THR:OG1	2:C:844:LYS:N	2.51	0.43
2:C:1276:TRP:CE2	3:D:801:VAL:HG11	2.54	0.43
8:T:-23:DG:H2''	8:T:-22:DA:C8	2.53	0.43
2:C:151:ARG:NH2	2:C:175:ARG:HH21	2.17	0.43
3:D:278:ARG:HH12	6:N:-8:DG:H1	1.66	0.43
3:D:1161:GLY:HA3	3:D:1204:VAL:HB	2.00	0.43
1:A:49:SER:OG	1:A:50:SER:N	2.51	0.43
3:D:808:VAL:HG23	3:D:810:THR:HG23	2.00	0.43
3:D:847:ASP:OD1	3:D:860:ARG:N	2.52	0.43
5:M:371:ALA:HB1	5:M:376:MET:O	2.18	0.43
3:D:332:LYS:HA	3:D:332:LYS:HD3	1.54	0.42
3:D:850:LYS:HG2	3:D:855:ASP:HB2	2.00	0.42
3:D:1159:ILE:HD13	3:D:1206:ARG:HB2	2.00	0.42
8:T:12:DT:H2''	8:T:13:DG:C8	2.54	0.42
2:C:136:PHE:CZ	2:C:456:VAL:HG21	2.54	0.42
5:M:367:LEU:HB2	6:N:-17:DT:OP2	2.20	0.42
2:C:198:ILE:HD11	2:C:389:PHE:CE2	2.54	0.42
3:D:184:ALA:O	3:D:188:LEU:HG	2.19	0.42
3:D:1187:GLU:HA	3:D:1187:GLU:OE2	2.19	0.42
5:M:409:THR:OG1	5:M:451:ILE:O	2.36	0.42
1:A:218:ARG:O	1:A:222:THR:HG22	2.19	0.42
2:C:1254:VAL:O	2:C:1255:THR:OG1	2.27	0.42
2:C:1274:GLU:HG2	3:D:424:ASN:ND2	2.34	0.42
2:C:200:ARG:HG3	2:C:200:ARG:HH11	1.84	0.42
2:C:1032:LYS:O	2:C:1036:ILE:HG12	2.20	0.42
1:A:39:LEU:HD23	1:A:39:LEU:HA	1.85	0.42
1:A:59:VAL:HG11	1:A:85:LEU:HD13	2.01	0.42
2:C:678:ARG:HA	2:C:678:ARG:HD3	1.67	0.42
3:D:419:HIS:NE2	3:D:471:PRO:O	2.52	0.42
8:T:26:DC:H2''	8:T:27:DA:C8	2.54	0.42
1:A:62:ASP:HB2	1:A:141:SER:HG	1.84	0.42
2:C:448:LEU:HB2	2:C:553:THR:OG1	2.20	0.42

Continued on next page...

*Continued from previous page...*

Atom-1	Atom-2	Interatomic distance (Å)	Clash overlap (Å)
2:C:1013:GLN:O	2:C:1017:GLN:HG2	2.20	0.42
3:D:279:LEU:HD12	3:D:295:GLU:HB3	2.02	0.42
3:D:876:SER:OG	3:D:989:GLY:N	2.41	0.42
4:E:16:ARG:O	4:E:16:ARG:HG3	2.20	0.42
8:T:23:DT:H2'	8:T:24:DG:C8	2.55	0.42
2:C:101:ARG:HB3	2:C:118:LYS:HA	2.02	0.42
2:C:755:LYS:HA	2:C:755:LYS:HD2	1.73	0.42
2:C:1304:MET:CE	3:D:472:LEU:HG	2.48	0.42
1:B:178:SER:HA	1:B:179:PRO:HD3	1.92	0.41
2:C:8:LYS:HG2	2:C:1164:PHE:CE2	2.55	0.41
2:C:152:SER:OG	2:C:450:ASN:O	2.24	0.41
2:C:606:LEU:HD11	2:C:652:TYR:CE2	2.54	0.41
2:C:737:ASN:OD1	2:C:737:ASN:N	2.53	0.41
2:C:1106:ARG:NH2	3:D:731:ARG:HH12	2.18	0.41
2:C:1165:SER:HB3	2:C:1168:GLU:OE1	2.20	0.41
8:T:12:DT:H2''	8:T:13:DG:N7	2.35	0.41
1:B:207:THR:HG22	1:B:209:GLY:H	1.84	0.41
3:D:368:LEU:HD11	3:D:468:VAL:HG11	2.02	0.41
3:D:557:LYS:HE3	3:D:563:LEU:HD21	2.02	0.41
3:D:930:LEU:HD11	3:D:1241:TYR:CE1	2.55	0.41
2:C:618:GLN:NE2	3:D:770:LEU:HD23	2.33	0.41
2:C:1244:HIS:HE2	2:C:1266:GLY:N	2.18	0.41
3:D:865:HIS:HE1	3:D:867:GLN:HB2	1.85	0.41
2:C:848:GLU:OE2	2:C:888:THR:OG1	2.28	0.41
3:D:195:GLU:OE2	3:D:195:GLU:N	2.39	0.41
3:D:490:ILE:O	3:D:499:ILE:HG22	2.21	0.41
3:D:576:ARG:HD3	3:D:593:ASN:HA	2.02	0.41
3:D:1156:LEU:HD22	3:D:1223:LEU:HD12	2.02	0.41
3:D:832:LYS:CE	3:D:1242:ARG:HD2	2.50	0.41
5:M:277:LEU:HG	5:M:278:VAL:N	2.35	0.41
1:A:71:LYS:O	1:A:74:VAL:HG22	2.21	0.41
2:C:939:VAL:HG21	2:C:1047:LEU:HD11	2.02	0.41
3:D:733:SER:O	3:D:737:ILE:HG12	2.20	0.41
4:E:59:ILE:HD13	4:E:59:ILE:HA	1.81	0.41
2:C:956:ALA:HB1	2:C:1032:LYS:HZ3	1.85	0.41
3:D:829:GLY:HA2	3:D:993:GLU:HG2	2.03	0.41
4:E:44:ASP:OD1	4:E:44:ASP:N	2.53	0.41
5:M:279:ARG:HH22	5:M:357:GLN:NE2	2.17	0.41
8:T:-24:DT:H2''	8:T:-23:DG:C8	2.56	0.41
2:C:836:LEU:HB2	2:C:1052:VAL:HG13	2.03	0.41
2:C:912:ASP:HA	5:M:259:ARG:HH22	1.86	0.41

*Continued on next page...*

Continued from previous page...

Atom-1	Atom-2	Interatomic distance (Å)	Clash overlap (Å)
2:C:1278:LEU:HD12	2:C:1287:LEU:HD13	2.03	0.41
3:D:97:VAL:HB	3:D:101:ARG:NH1	2.35	0.41
3:D:350:SER:HA	3:D:468:VAL:O	2.21	0.41
3:D:807:LEU:HG	3:D:1259:GLN:NE2	2.35	0.41
6:N:-11:DC:C4	6:N:-10:DT:H73	2.56	0.41
8:T:-16:DC:H2''	8:T:-15:DA:C8	2.56	0.41
1:A:79:LEU:O	1:A:83:LEU:HG	2.21	0.41
1:A:102:LEU:HG	1:A:142:MET:HG2	2.02	0.41
1:B:134:THR:HB	1:B:138:ALA:HB3	2.02	0.41
2:C:6:THR:HB	2:C:781:ASP:OD1	2.20	0.41
2:C:468:LEU:HD23	2:C:468:LEU:HA	1.86	0.41
2:C:802:VAL:HG22	2:C:1096:ILE:HB	2.02	0.41
2:C:1101:LEU:HD12	3:D:731:ARG:HB3	2.01	0.41
2:C:1244:HIS:NE2	2:C:1266:GLY:O	2.53	0.41
3:D:75:TYR:OH	3:D:86:GLU:OE2	2.27	0.41
8:T:-13:DC:H2''	8:T:-12:DA:C8	2.56	0.41
2:C:844:LYS:HG2	5:M:273:ILE:HG22	2.03	0.41
3:D:1287:ILE:HD13	3:D:1287:ILE:HA	1.86	0.41
5:M:161:ILE:O	5:M:165:ILE:HG12	2.21	0.41
5:M:268:GLU:HG2	5:M:269:PRO:HD3	2.03	0.41
2:C:409:LEU:HD13	2:C:427:ASP:HB3	2.03	0.40
2:C:675:ASP:OD1	2:C:676:ALA:N	2.53	0.40
2:C:699:LEU:HD23	2:C:699:LEU:HA	1.84	0.40
3:D:279:LEU:HD11	3:D:296:LYS:HG3	2.02	0.40
3:D:334:LYS:C	3:D:336:GLY:H	2.24	0.40
3:D:679:TYR:O	3:D:682:VAL:HG12	2.21	0.40
1:B:171:LEU:HD12	1:B:171:LEU:HA	1.89	0.40
2:C:1023:HIS:O	2:C:1027:LYS:HE3	2.21	0.40
3:D:505:ASP:HB2	3:D:629:PHE:HE1	1.85	0.40
3:D:549:LYS:HE3	3:D:569:LEU:HD21	2.03	0.40
3:D:609:TYR:HD2	3:D:617:THR:HG21	1.85	0.40
1:B:86:LYS:NZ	3:D:526:VAL:O	2.53	0.40
2:C:90:VAL:HG22	2:C:91:THR:H	1.86	0.40
2:C:151:ARG:NE	2:C:445:ILE:HD11	2.36	0.40
2:C:204:LEU:HB3	2:C:208:ILE:HD11	2.02	0.40
2:C:394:ARG:HD2	2:C:394:ARG:HA	1.92	0.40
2:C:1247:SER:HB3	3:D:375:GLU:O	2.21	0.40
2:C:448:LEU:HA	2:C:448:LEU:HD12	1.85	0.40
3:D:168:ALA:O	3:D:172:PHE:N	2.52	0.40
3:D:1230:THR:HG22	3:D:1257:VAL:HG11	2.04	0.40
6:N:-11:DC:H2''	6:N:-10:DT:H5''	2.04	0.40

There are no symmetry-related clashes.

## 5.3 Torsion angles [i](#)

### 5.3.1 Protein backbone [i](#)

In the following table, the Percentiles column shows the percent Ramachandran outliers of the chain as a percentile score with respect to all PDB entries followed by that with respect to all EM entries.

The Analysed column shows the number of residues for which the backbone conformation was analysed, and the total number of residues.

Mol	Chain	Analysed	Favoured	Allowed	Outliers	Percentiles	
1	A	304/321 (95%)	287 (94%)	17 (6%)	0	100	100
1	B	233/321 (73%)	217 (93%)	16 (7%)	0	100	100
2	C	1339/1341 (100%)	1269 (95%)	70 (5%)	0	100	100
3	D	1318/1373 (96%)	1248 (95%)	70 (5%)	0	100	100
4	E	72/74 (97%)	68 (94%)	4 (6%)	0	100	100
5	M	321/329 (98%)	292 (91%)	26 (8%)	3 (1%)	17	54
All	All	3587/3759 (95%)	3381 (94%)	203 (6%)	3 (0%)	54	83

All (3) Ramachandran outliers are listed below:

Mol	Chain	Res	Type
5	M	357	GLN
5	M	278	VAL
5	M	276	VAL

### 5.3.2 Protein sidechains [i](#)

In the following table, the Percentiles column shows the percent sidechain outliers of the chain as a percentile score with respect to all PDB entries followed by that with respect to all EM entries.

The Analysed column shows the number of residues for which the sidechain conformation was analysed, and the total number of residues.

Mol	Chain	Analysed	Rotameric	Outliers	Percentiles	
1	A	259/280 (92%)	250 (96%)	9 (4%)	36	64
1	B	183/280 (65%)	177 (97%)	6 (3%)	38	65

*Continued on next page...*

*Continued from previous page...*

Mol	Chain	Analysed	Rotameric	Outliers	Percentiles	
2	C	1038/1156 (90%)	1009 (97%)	29 (3%)	43	68
3	D	936/1145 (82%)	908 (97%)	28 (3%)	41	66
4	E	53/64 (83%)	51 (96%)	2 (4%)	33	61
5	M	150/289 (52%)	141 (94%)	9 (6%)	19	50
All	All	2619/3214 (82%)	2536 (97%)	83 (3%)	42	65

All (83) residues with a non-rotameric sidechain are listed below:

Mol	Chain	Res	Type
1	A	41	ASN
1	A	49	SER
1	A	105	SER
1	A	178	SER
1	A	236	ASP
1	A	288	GLU
1	A	299	SER
1	A	309	SER
1	A	320	ASN
1	B	12	ARG
1	B	69	SER
1	B	114	ASP
1	B	117	HIS
1	B	200	LYS
1	B	205	MET
2	C	14	ASP
2	C	47	TYR
2	C	70	TYR
2	C	85	CYS
2	C	97	ARG
2	C	188	PHE
2	C	359	ARG
2	C	405	PHE
2	C	468	LEU
2	C	473	ARG
2	C	492	MET
2	C	522	SER
2	C	542	ARG
2	C	605	TYR
2	C	622	ASN
2	C	624	ASP
2	C	656	SER

*Continued on next page...*

*Continued from previous page...*

<b>Mol</b>	<b>Chain</b>	<b>Res</b>	<b>Type</b>
2	C	697	LYS
2	C	711	ASP
2	C	740	GLU
2	C	785	ASP
2	C	819	SER
2	C	841	ARG
2	C	1018	TYR
2	C	1126	ASP
2	C	1149	TYR
2	C	1253	LEU
2	C	1265	PHE
2	C	1295	SER
3	D	54	ASP
3	D	58	CYS
3	D	70	CYS
3	D	81	ARG
3	D	115	TRP
3	D	130	MET
3	D	134	ASP
3	D	192	MET
3	D	227	PHE
3	D	250	ARG
3	D	264	ASP
3	D	279	LEU
3	D	284	ASP
3	D	350	SER
3	D	489	ASN
3	D	558	ASP
3	D	604	MET
3	D	651	HIS
3	D	699	ASP
3	D	701	LEU
3	D	708	ASN
3	D	813	ASP
3	D	881	LYS
3	D	901	ARG
3	D	1195	GLN
3	D	1238	GLN
3	D	1289	ASN
3	D	1302	TYR
4	E	8	ASP
4	E	25	ARG

*Continued on next page...*

*Continued from previous page...*

Mol	Chain	Res	Type
5	M	122	ASP
5	M	123	TYR
5	M	133	PHE
5	M	146	ASP
5	M	206	PHE
5	M	246	LEU
5	M	271	TYR
5	M	357	GLN
5	M	361	TYR

Sometimes sidechains can be flipped to improve hydrogen bonding and reduce clashes. All (4) such sidechains are listed below:

Mol	Chain	Res	Type
3	D	113	HIS
3	D	206	ASN
3	D	1227	HIS
3	D	1350	ASN

### 5.3.3 RNA [i](#)

Mol	Chain	Analysed	Backbone Outliers	Pucker Outliers
7	R	8/9 (88%)	1 (12%)	0

All (1) RNA backbone outliers are listed below:

Mol	Chain	Res	Type
7	R	0	C

There are no RNA pucker outliers to report.

## 5.4 Non-standard residues in protein, DNA, RNA chains [i](#)

There are no non-standard protein/DNA/RNA residues in this entry.

## 5.5 Carbohydrates [i](#)

There are no monosaccharides in this entry.



## 5.6 Ligand geometry [i](#)

Of 3 ligands modelled in this entry, 3 are monoatomic - leaving 0 for Mogul analysis.

There are no bond length outliers.

There are no bond angle outliers.

There are no chirality outliers.

There are no torsion outliers.

There are no ring outliers.

No monomer is involved in short contacts.

## 5.7 Other polymers [i](#)

There are no such residues in this entry.

## 5.8 Polymer linkage issues [i](#)

The following chains have linkage breaks:

Mol	Chain	Number of breaks
5	M	3
6	N	1
8	T	1

All chain breaks are listed below:

Model	Chain	Residue-1	Atom-1	Residue-2	Atom-2	Distance (Å)
1	N	-8:DG	O3'	3:DA	P	21.78
1	M	102:VAL	C	114:GLY	N	19.29
1	T	3:DA	O3'	10:DC	P	13.70
1	M	295:PRO	C	335:SER	N	12.92
1	M	396:ILE	C	397:PHE	N	4.87

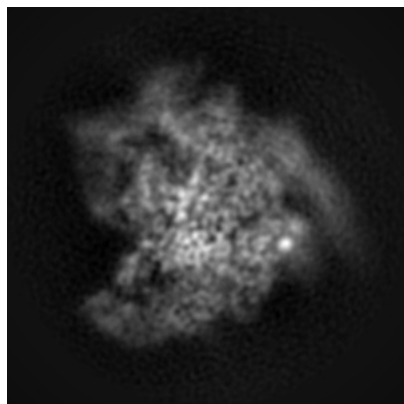
## 6 Map visualisation [i](#)

This section contains visualisations of the EMDB entry EMD-19084. These allow visual inspection of the internal detail of the map and identification of artifacts.

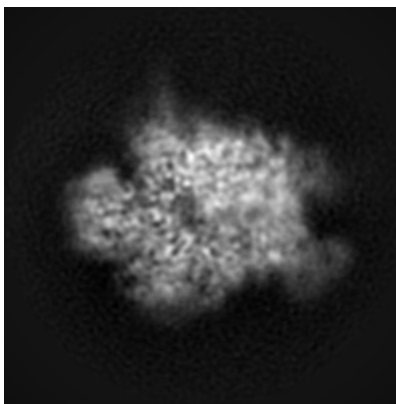
Images derived from a raw map, generated by summing the deposited half-maps, are presented below the corresponding image components of the primary map to allow further visual inspection and comparison with those of the primary map.

### 6.1 Orthogonal projections [i](#)

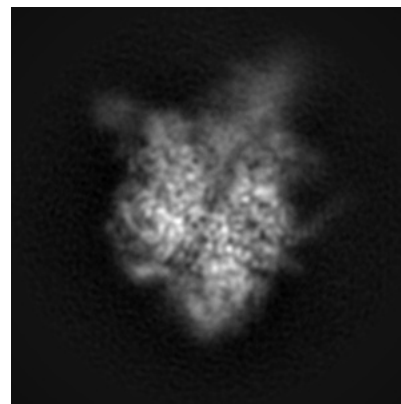
#### 6.1.1 Primary map



X

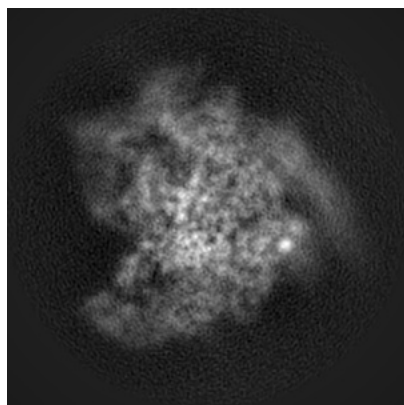


Y

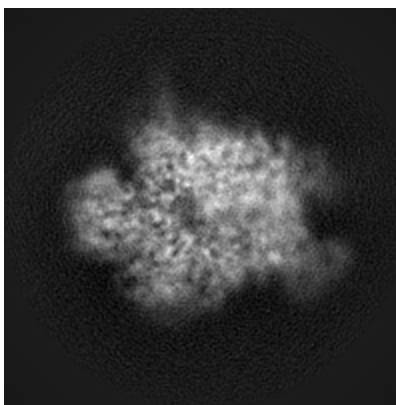


Z

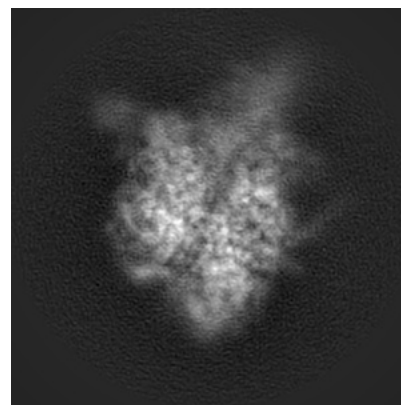
#### 6.1.2 Raw map



X



Y

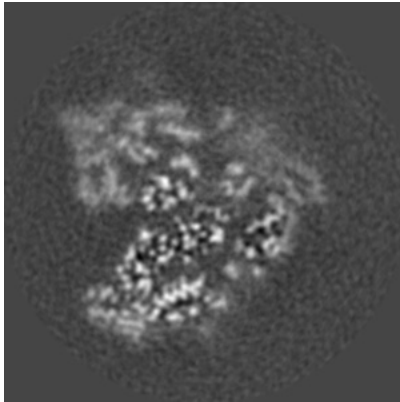


Z

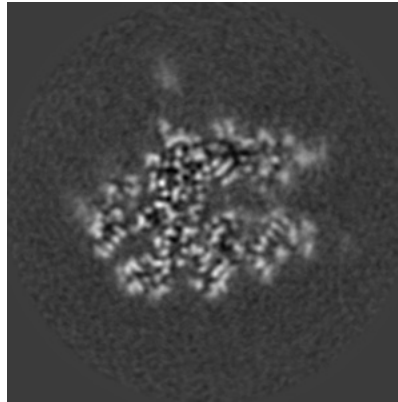
The images above show the map projected in three orthogonal directions.

## 6.2 Central slices [i](#)

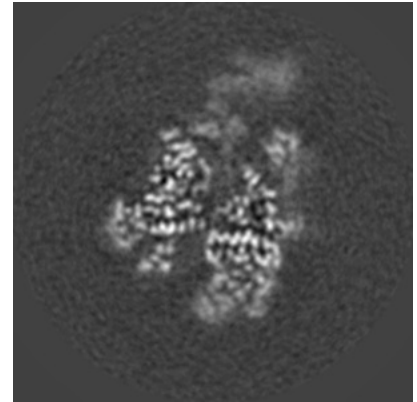
### 6.2.1 Primary map



X Index: 100

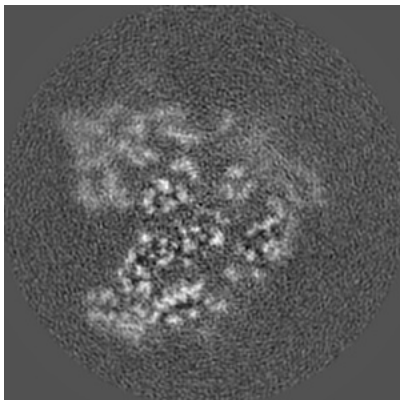


Y Index: 100

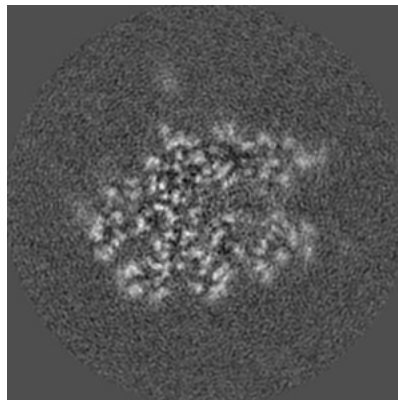


Z Index: 100

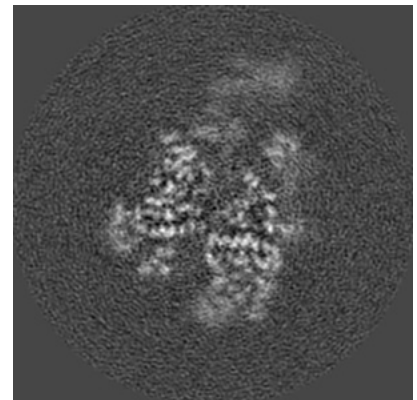
### 6.2.2 Raw map



X Index: 100



Y Index: 100

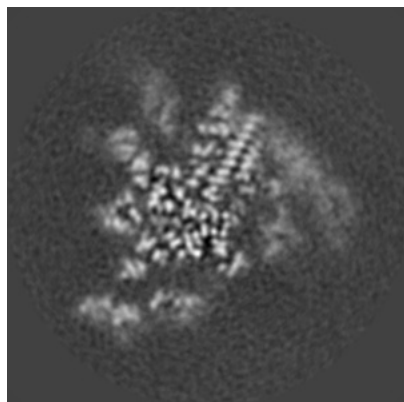


Z Index: 100

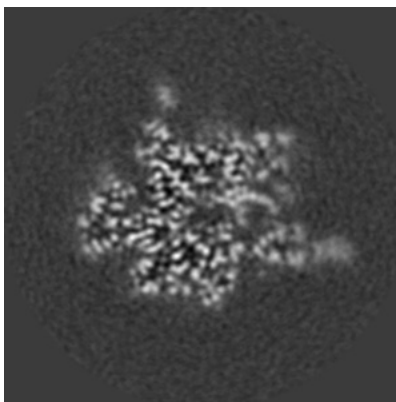
The images above show central slices of the map in three orthogonal directions.

## 6.3 Largest variance slices [i](#)

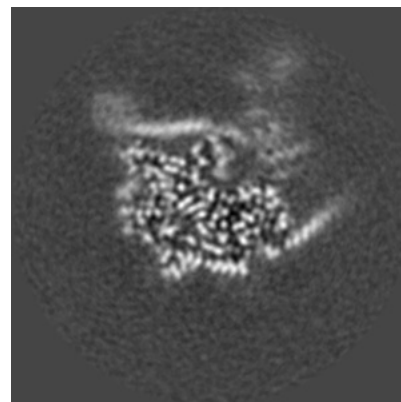
### 6.3.1 Primary map



X Index: 115

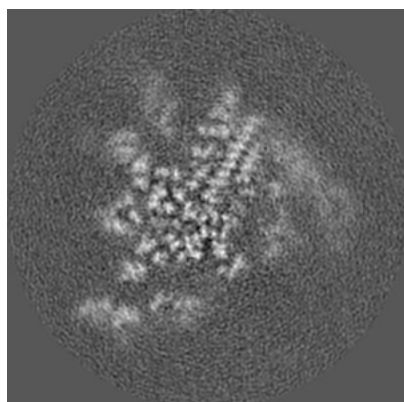


Y Index: 94

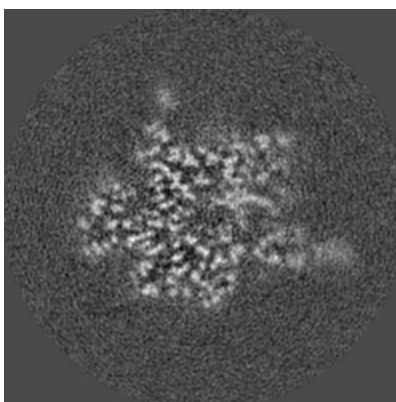


Z Index: 81

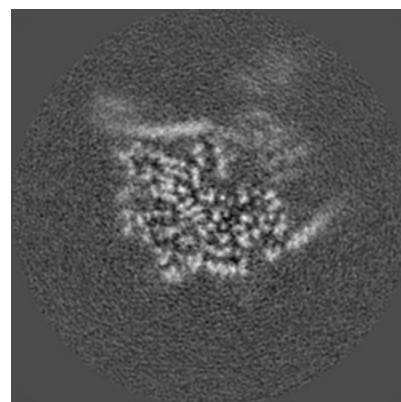
### 6.3.2 Raw map



X Index: 115



Y Index: 94

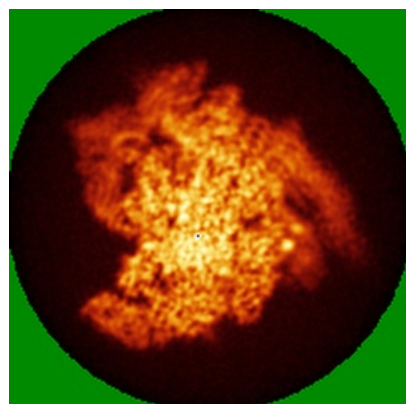


Z Index: 82

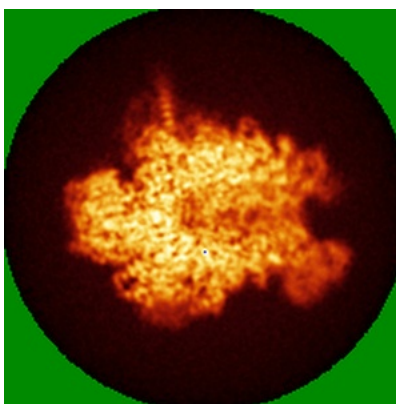
The images above show the largest variance slices of the map in three orthogonal directions.

## 6.4 Orthogonal standard-deviation projections (False-color) [i](#)

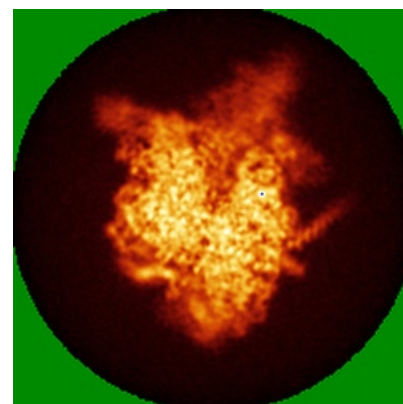
### 6.4.1 Primary map



X

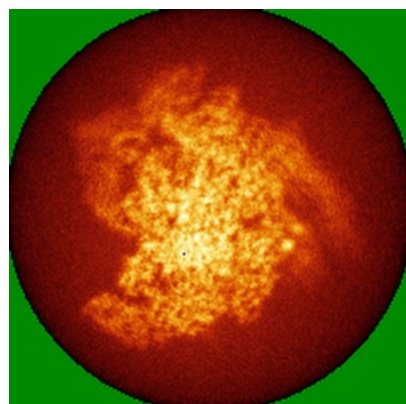


Y

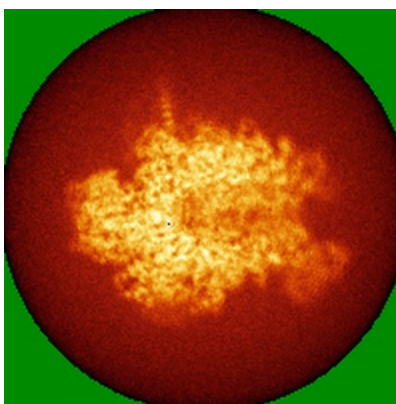


Z

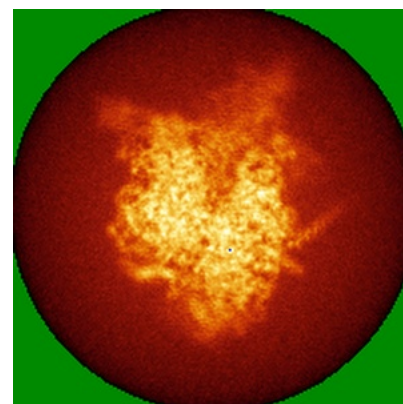
### 6.4.2 Raw map



X



Y

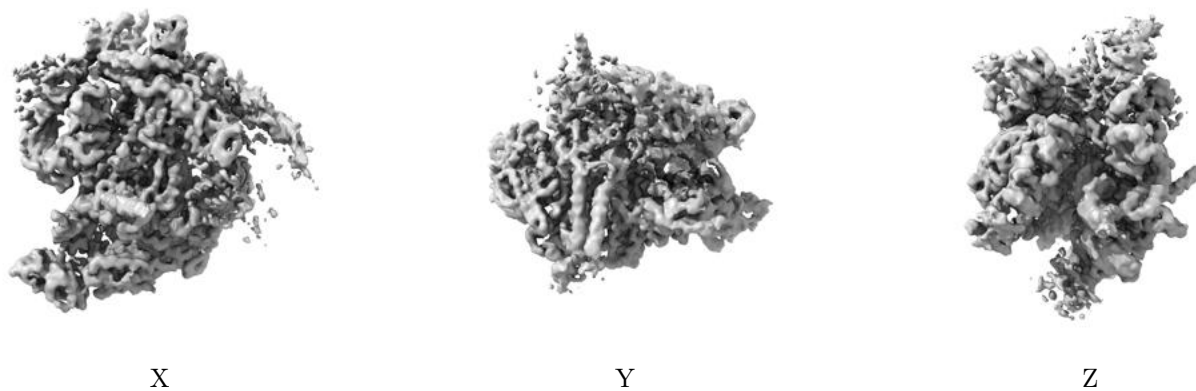


Z

The images above show the map standard deviation projections with false color in three orthogonal directions. Minimum values are shown in green, max in blue, and dark to light orange shades represent small to large values respectively.

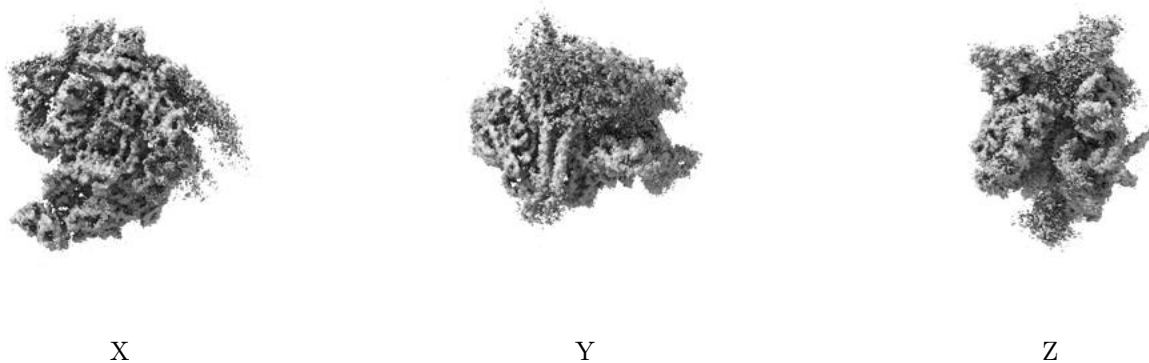
## 6.5 Orthogonal surface views [i](#)

### 6.5.1 Primary map



The images above show the 3D surface view of the map at the recommended contour level 0.0085. These images, in conjunction with the slice images, may facilitate assessment of whether an appropriate contour level has been provided.

### 6.5.2 Raw map



These images show the 3D surface of the raw map. The raw map's contour level was selected so that its surface encloses the same volume as the primary map does at its recommended contour level.

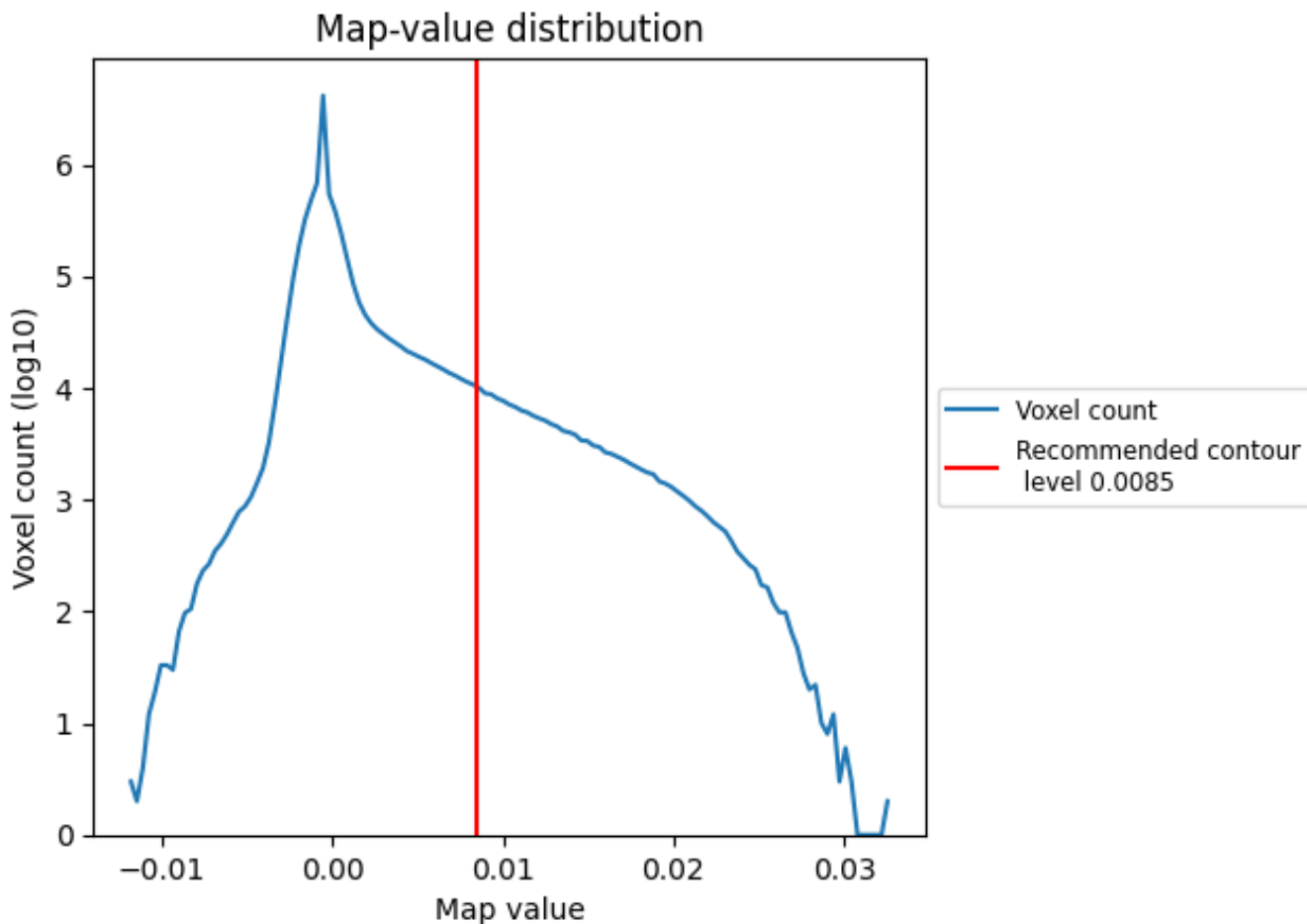
## 6.6 Mask visualisation [i](#)

This section was not generated. No masks/segmentation were deposited.

## 7 Map analysis [i](#)

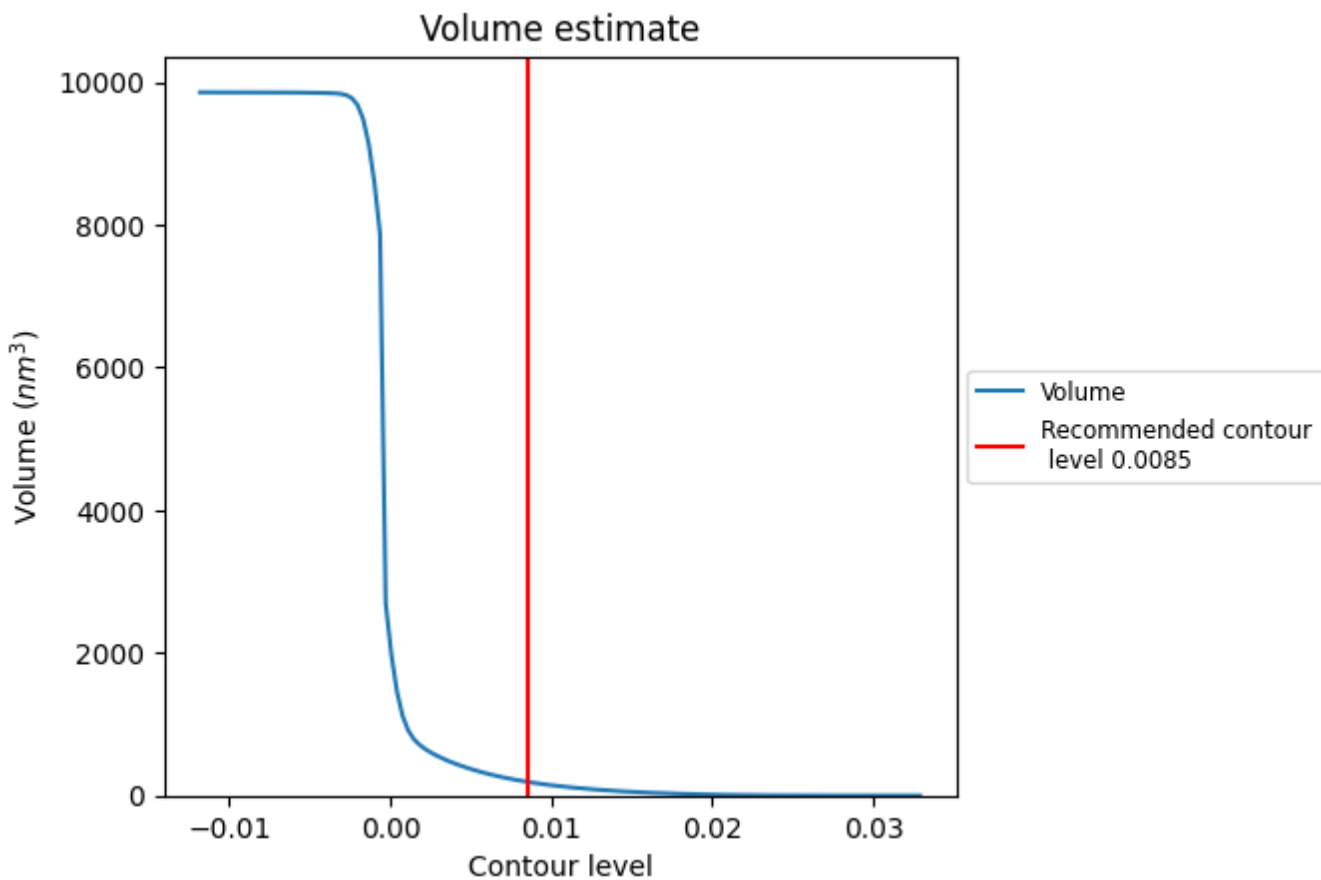
This section contains the results of statistical analysis of the map.

### 7.1 Map-value distribution [i](#)



The map-value distribution is plotted in 128 intervals along the x-axis. The y-axis is logarithmic. A spike in this graph at zero usually indicates that the volume has been masked.

## 7.2 Volume estimate [i](#)

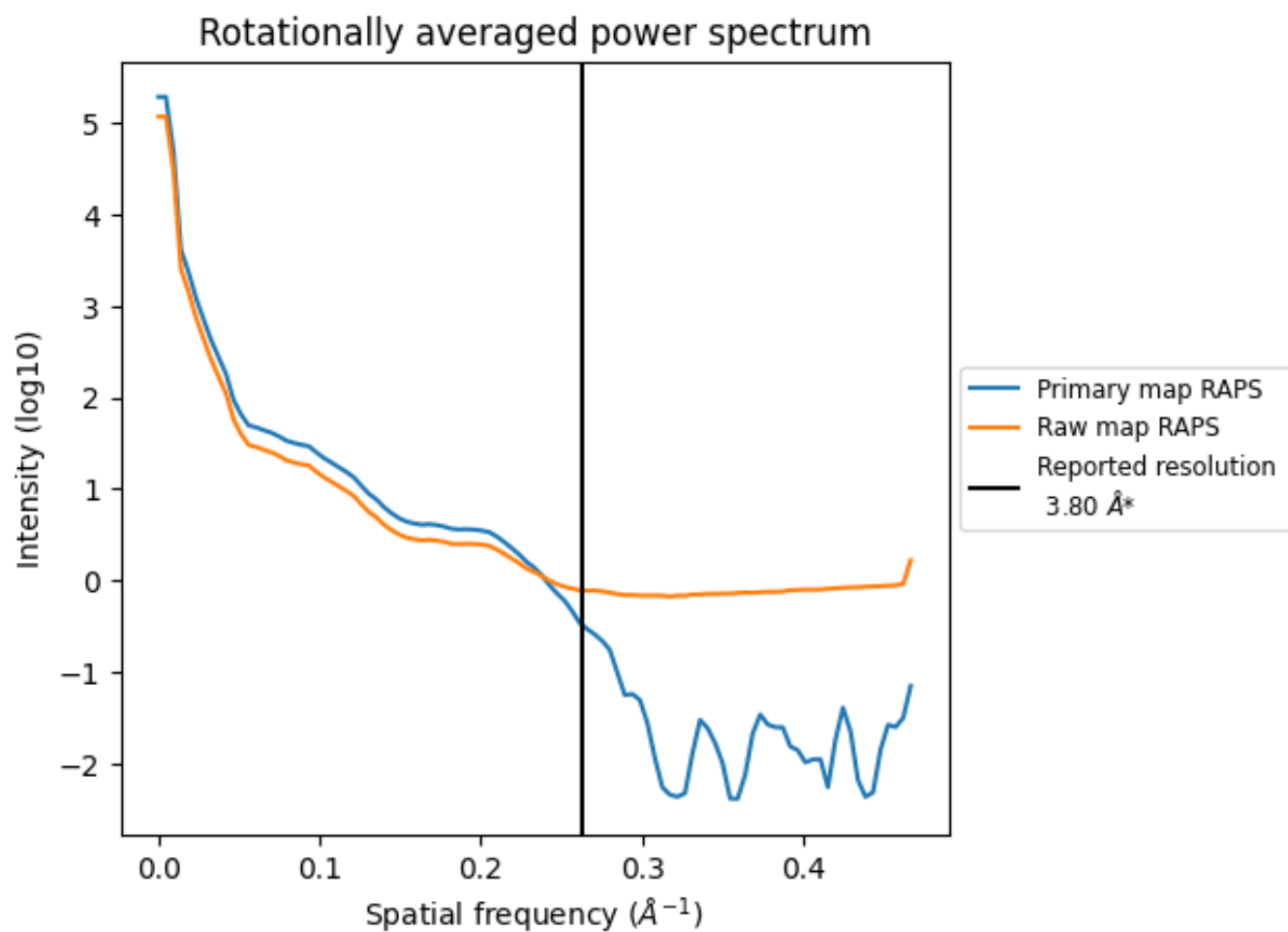


The volume at the recommended contour level is 192 nm<sup>3</sup>; this corresponds to an approximate mass of 174 kDa.

The volume estimate graph shows how the enclosed volume varies with the contour level. The recommended contour level is shown as a vertical line and the intersection between the line and the curve gives the volume of the enclosed surface at the given level.



### 7.3 Rotationally averaged power spectrum [i](#)

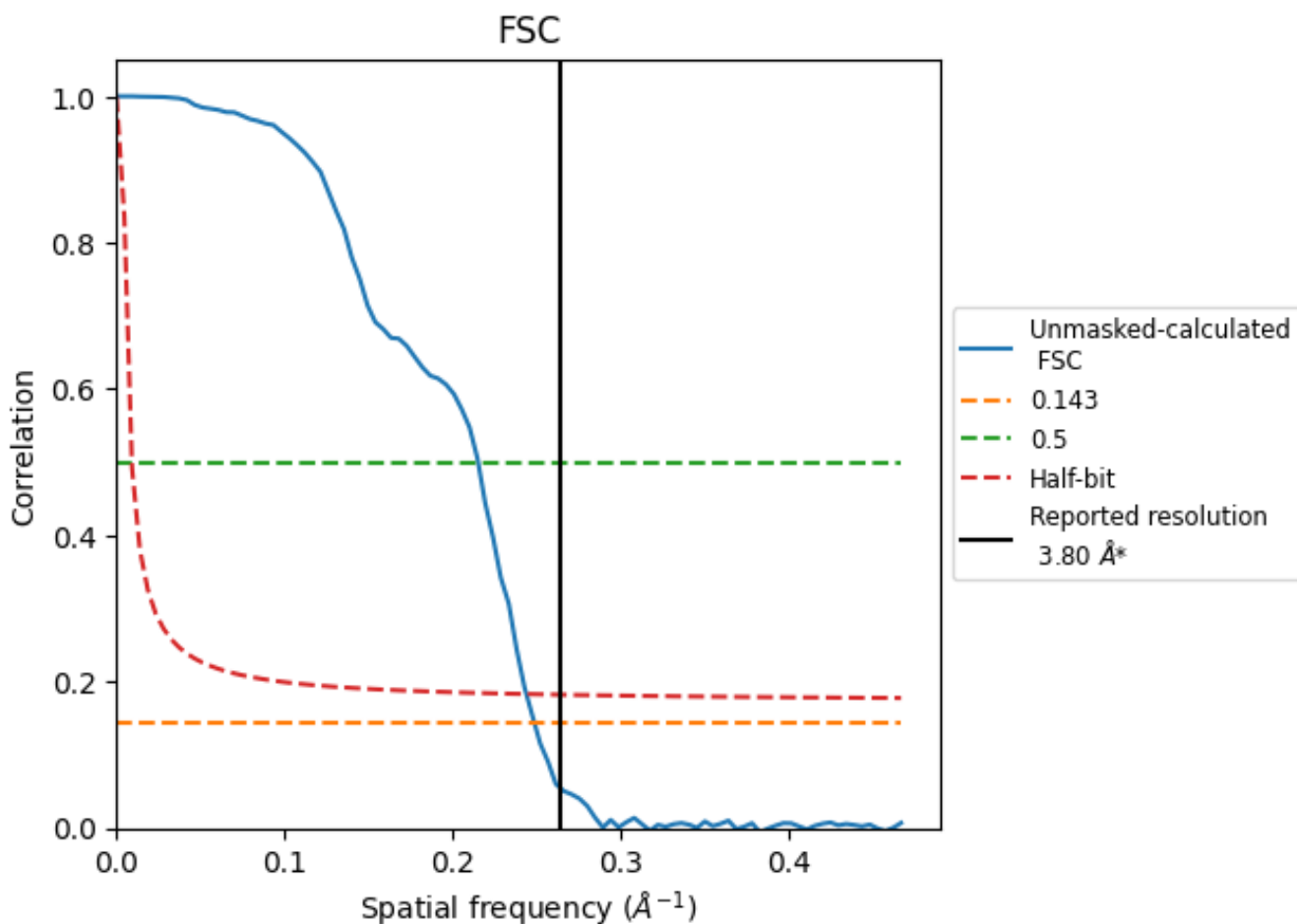


\*Reported resolution corresponds to spatial frequency of 0.263 Å<sup>-1</sup>

## 8 Fourier-Shell correlation [i](#)

Fourier-Shell Correlation (FSC) is the most commonly used method to estimate the resolution of single-particle and subtomogram-averaged maps. The shape of the curve depends on the imposed symmetry, mask and whether or not the two 3D reconstructions used were processed from a common reference. The reported resolution is shown as a black line. A curve is displayed for the half-bit criterion in addition to lines showing the 0.143 gold standard cut-off and 0.5 cut-off.

### 8.1 FSC [i](#)



\*Reported resolution corresponds to spatial frequency of 0.263 Å<sup>-1</sup>

## 8.2 Resolution estimates [i](#)

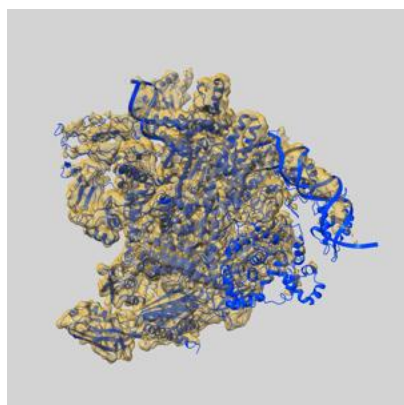
Resolution estimate (Å)	Estimation criterion (FSC cut-off)		
	0.143	0.5	Half-bit
Reported by author	3.80	-	-
Author-provided FSC curve	-	-	-
Unmasked-calculated*	4.02	4.65	4.10

\*Resolution estimate based on FSC curve calculated by comparison of deposited half-maps.

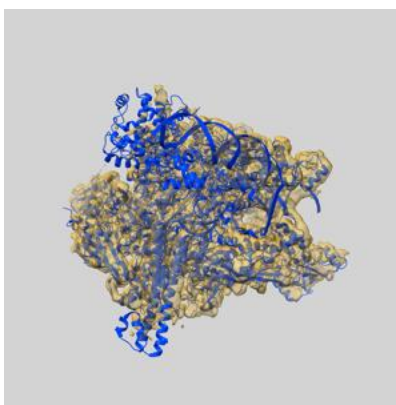
## 9 Map-model fit [i](#)

This section contains information regarding the fit between EMDB map EMD-19084 and PDB model 8REE. Per-residue inclusion information can be found in section 3 on page 6.

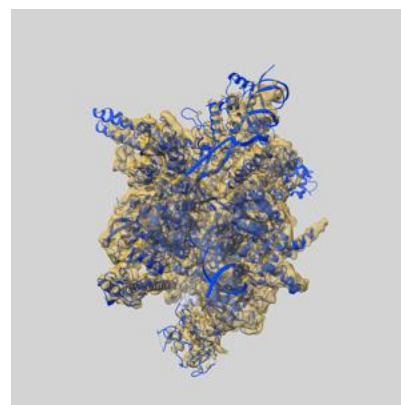
### 9.1 Map-model overlay [i](#)



X



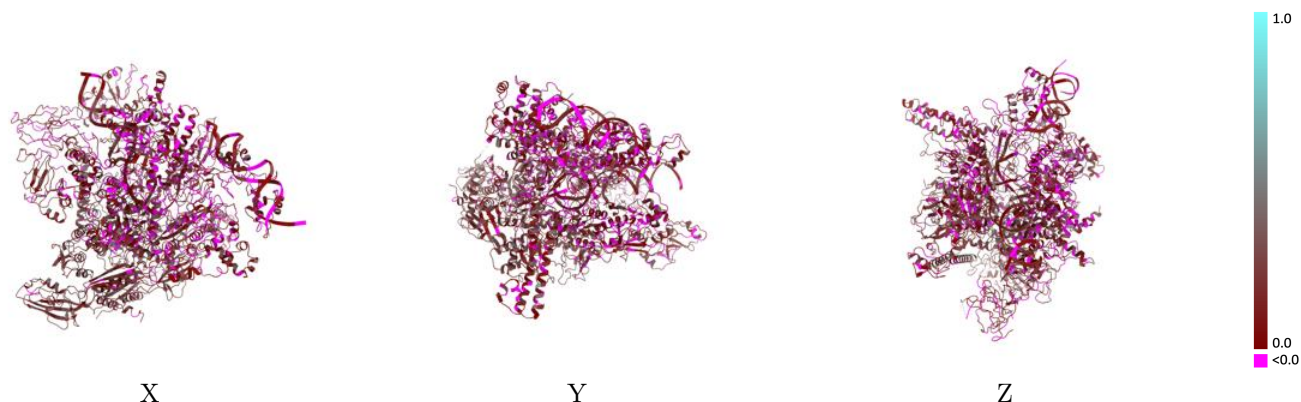
Y



Z

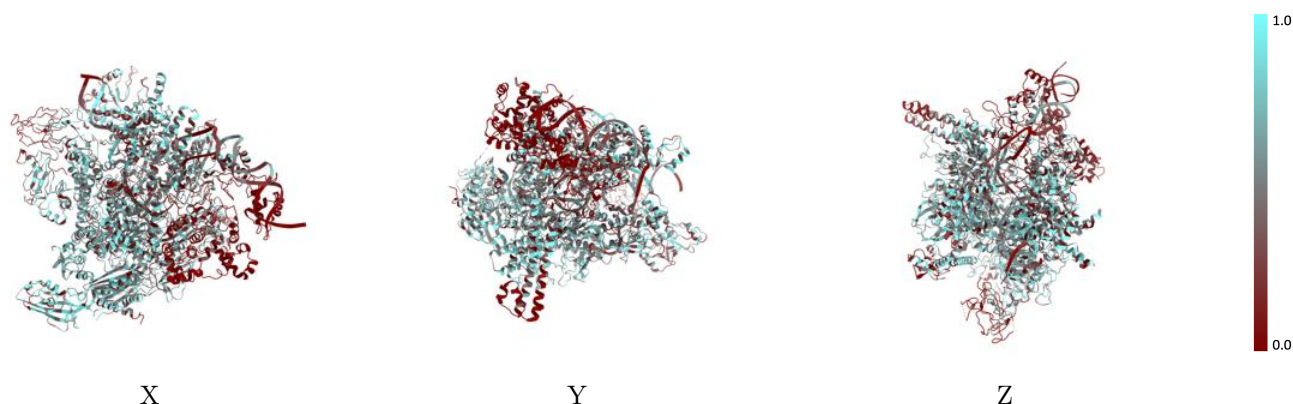
The images above show the 3D surface view of the map at the recommended contour level 0.0085 at 50% transparency in yellow overlaid with a ribbon representation of the model coloured in blue. These images allow for the visual assessment of the quality of fit between the atomic model and the map.

## 9.2 Q-score mapped to coordinate model [i](#)



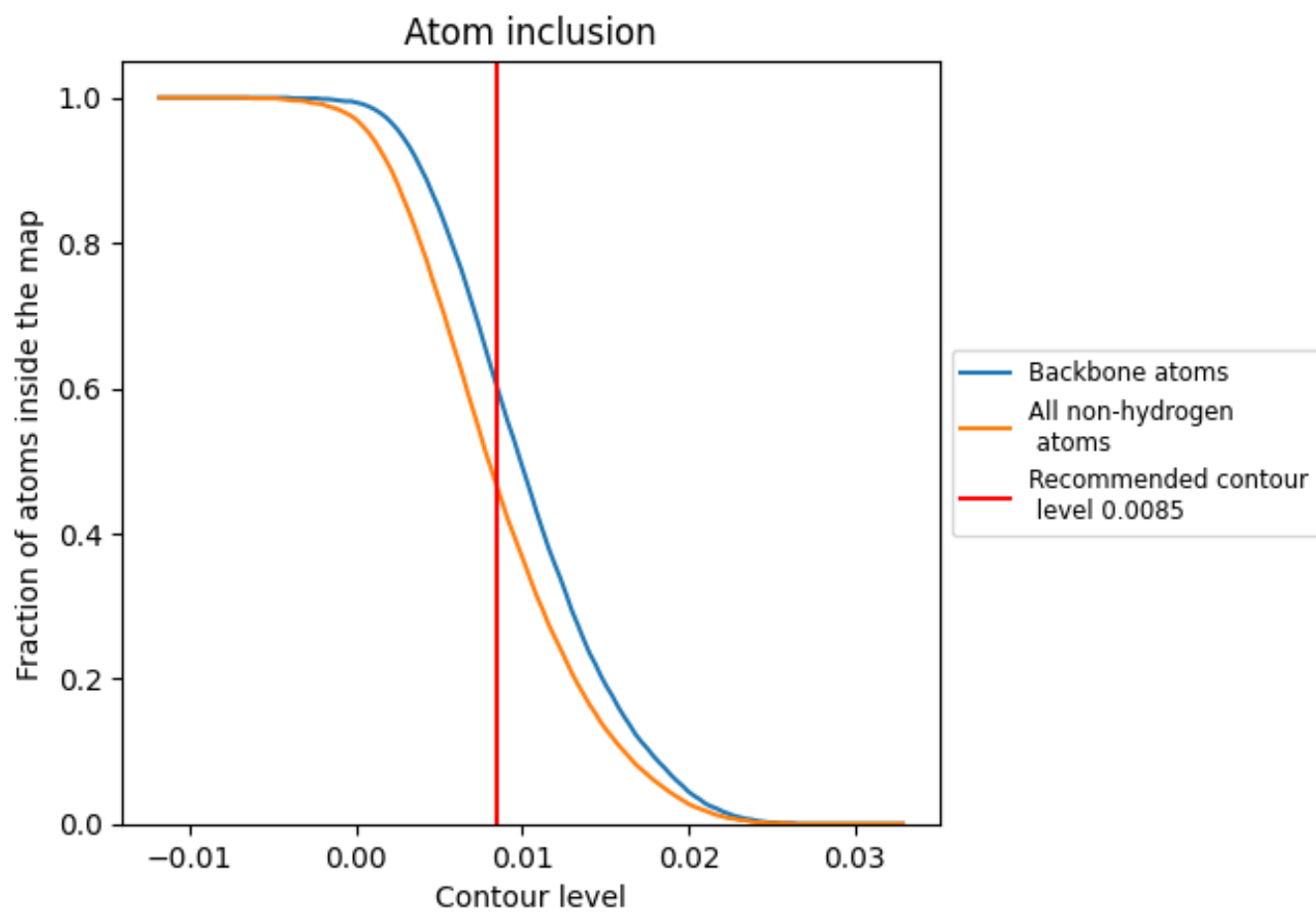
The images above show the model with each residue coloured according to its Q-score. This shows their resolvability in the map with higher Q-score values reflecting better resolvability. Please note: Q-score is calculating the resolvability of atoms, and thus high values are only expected at resolutions at which atoms can be resolved. Low Q-score values may therefore be expected for many entries.

## 9.3 Atom inclusion mapped to coordinate model [i](#)



The images above show the model with each residue coloured according to its atom inclusion. This shows to what extent they are inside the map at the recommended contour level (0.0085).





















## 9.4 Atom inclusion [i](#)



At the recommended contour level, 60% of all backbone atoms, 46% of all non-hydrogen atoms, are inside the map.

## 9.5 Map-model fit summary

The table lists the average atom inclusion at the recommended contour level (0.0085) and Q-score for the entire model and for each chain.

Chain	Atom inclusion	Q-score
All	 0.4640	 0.1360
A	 0.4380	 0.1730
B	 0.5690	 0.2130
C	 0.5010	 0.1350
D	 0.5120	 0.1340
E	 0.5230	 0.1490
M	 0.0830	 0.0750
N	 0.3600	 0.1180
R	 0.4610	 0.1540
T	 0.3820	 0.0960

