



# Full wwPDB X-ray Structure Validation Report ⓘ

Mar 8, 2018 – 08:02 pm GMT

PDB ID : 1RF4  
Title : Structural Studies of Streptococcus pneumoniae EPSP Synthase, Tetrahedral intermediate Bound State  
Authors : Park, H.; Hilsenbeck, J.L.; Kim, H.J.; Shuttleworth, W.A.; Park, Y.H.; Evans, J.N.; Kang, C.  
Deposited on : 2003-11-07  
Resolution : 2.20 Å(reported)

This is a Full wwPDB X-ray Structure Validation Report for a publicly released PDB entry.

We welcome your comments at [validation@mail.wwpdb.org](mailto:validation@mail.wwpdb.org)

A user guide is available at

<https://www.wwpdb.org/validation/2017/XrayValidationReportHelp>

with specific help available everywhere you see the ⓘ symbol.

---

The following versions of software and data (see [references ⓘ](#)) were used in the production of this report:

MolProbity : 4.02b-467  
Mogul : 1.7.3 (157068), CSD as539be (2018)  
Xtrriage (Phenix) : 1.13  
EDS : trunk30967  
Percentile statistics : 20171227.v01 (using entries in the PDB archive December 27th 2017)  
Refmac : 5.8.0158  
CCP4 : 7.0 (Gargrove)  
Ideal geometry (proteins) : Engh & Huber (2001)  
Ideal geometry (DNA, RNA) : Parkinson et al. (1996)  
Validation Pipeline (wwPDB-VP) : trunk30967

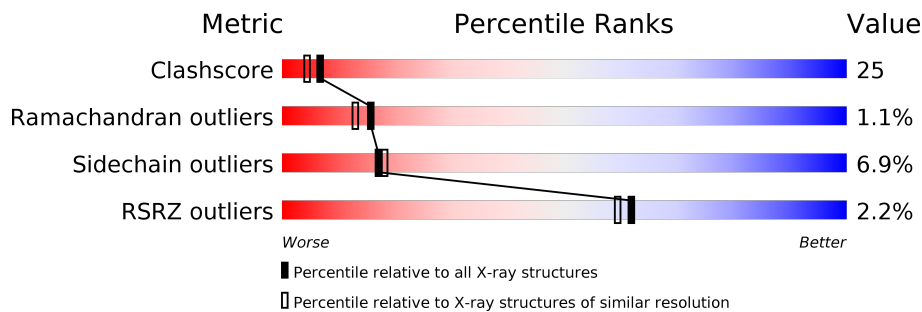
# 1 Overall quality at a glance

The following experimental techniques were used to determine the structure:

*X-RAY DIFFRACTION*

The reported resolution of this entry is 2.20 Å.

Percentile scores (ranging between 0-100) for global validation metrics of the entry are shown in the following graphic. The table shows the number of entries on which the scores are based.



Metric	Whole archive (#Entries)	Similar resolution (#Entries, resolution range(Å))
Clashscore	122126	5027 (2.20-2.20)
Ramachandran outliers	120053	4952 (2.20-2.20)
Sidechain outliers	120020	4953 (2.20-2.20)
RSRZ outliers	108989	4245 (2.20-2.20)

The table below summarises the geometric issues observed across the polymeric chains and their fit to the electron density. The red, orange, yellow and green segments on the lower bar indicate the fraction of residues that contain outliers for  $\geq 3$ , 2, 1 and 0 types of geometric quality criteria. A grey segment represents the fraction of residues that are not modelled. The numeric value for each fraction is indicated below the corresponding segment, with a dot representing fractions  $\leq 5\%$ . The upper red bar (where present) indicates the fraction of residues that have poor fit to the electron density. The numeric value is given above the bar.

Mol	Chain	Length	Quality of chain
1	A	427	 2% 64% 31% 5%
1	B	427	 2% 67% 28% 5%
1	C	427	 2% 63% 32% 5%
1	D	427	 3% 60% 36% 5%

## 2 Entry composition [i](#)

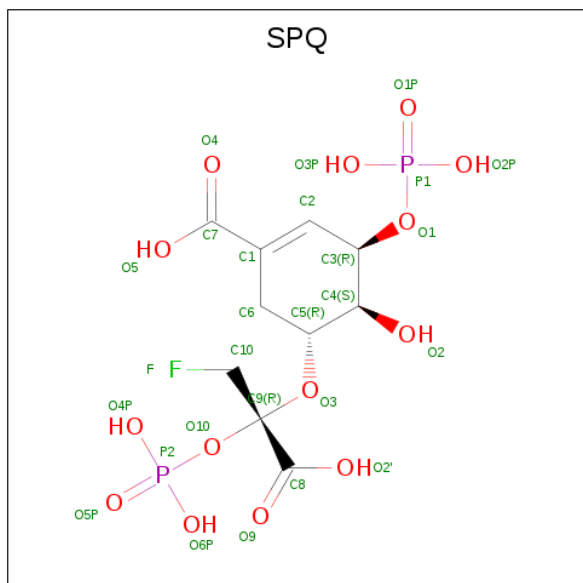
There are 3 unique types of molecules in this entry. The entry contains 13729 atoms, of which 0 are hydrogens and 0 are deuteriums.

In the tables below, the ZeroOcc column contains the number of atoms modelled with zero occupancy, the AltConf column contains the number of residues with at least one atom in alternate conformation and the Trace column contains the number of residues modelled with at most 2 atoms.

- Molecule 1 is a protein called 5-enolpyruvylshikimate-3-phosphate synthase.

Mol	Chain	Residues	Atoms					ZeroOcc	AltConf	Trace
			Total	C	N	O	S			
1	A	427	Total 3212	C 2019	N 559	O 619	S 15	0	0	0
1	B	427	Total 3212	C 2019	N 559	O 619	S 15	0	0	0
1	C	427	Total 3212	C 2019	N 559	O 619	S 15	0	0	0
1	D	427	Total 3212	C 2019	N 559	O 619	S 15	0	0	0

- Molecule 2 is (3R,4S,5R)-5-[[[(1R)-1-CARBOXY-2-FLUORO-1-(PHOSPHONOOXY)ETHYL]OXY]-4-HYDROXY-3-(PHOSPHONOOXY)CYCLOHEX-1-ENE-1-CARBOXYLIC ACID (three-letter code: SPQ) (formula: C<sub>10</sub>H<sub>15</sub>FO<sub>14</sub>P<sub>2</sub>).



Mol	Chain	Residues	Atoms					ZeroOcc	AltConf
			Total	C	F	O	P		
2	A	1	Total 27	C 10	F 1	O 14	P 2	0	0

*Continued on next page...*

*Continued from previous page...*

Mol	Chain	Residues	Atoms					ZeroOcc	AltConf
2	B	1	Total	C	F	O	P	0	0
			27	10	1	14	2		
2	C	1	Total	C	F	O	P	0	0
			27	10	1	14	2		
2	D	1	Total	C	F	O	P	0	0
			27	10	1	14	2		

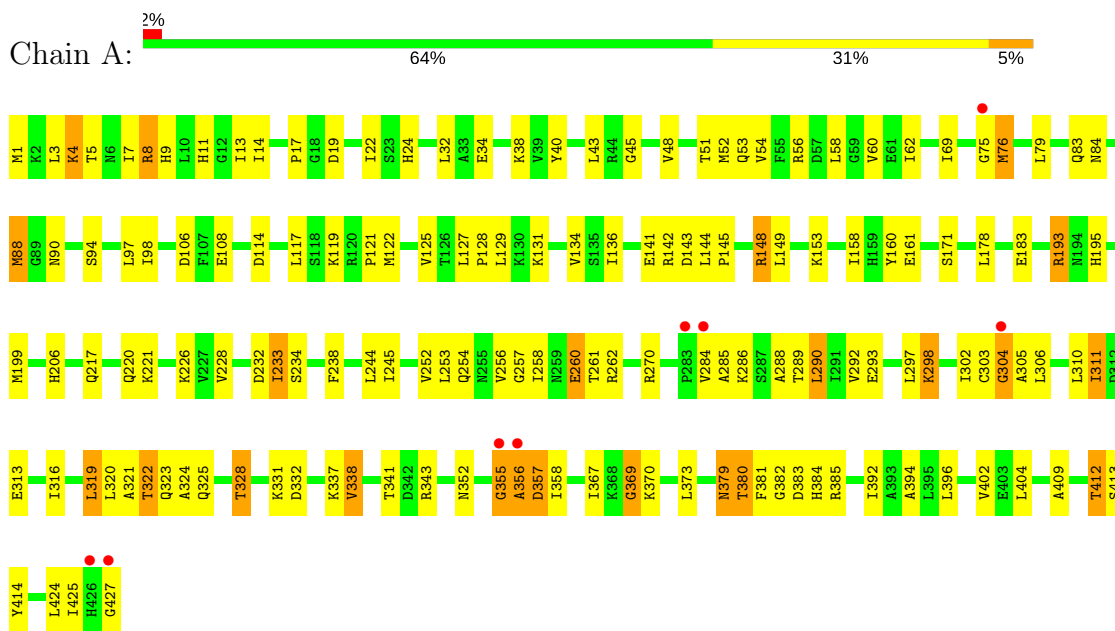
- Molecule 3 is water.

Mol	Chain	Residues	Atoms		ZeroOcc	AltConf
3	A	219	Total	O	0	0
			219	219		
3	B	232	Total	O	0	0
			232	232		
3	C	165	Total	O	0	0
			165	165		
3	D	157	Total	O	0	0
			157	157		

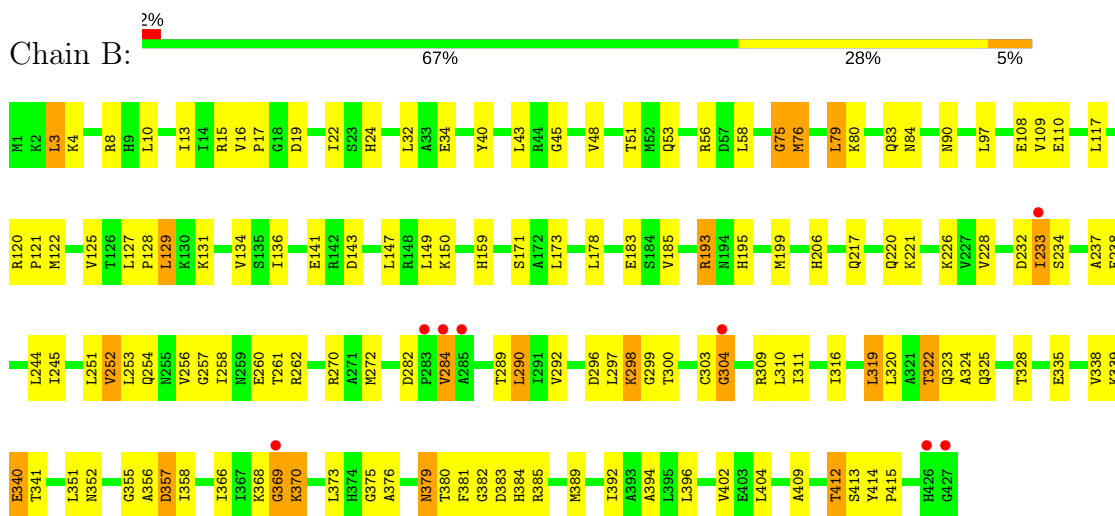
### 3 Residue-property plots i

These plots are drawn for all protein, RNA and DNA chains in the entry. The first graphic for a chain summarises the proportions of the various outlier classes displayed in the second graphic. The second graphic shows the sequence view annotated by issues in geometry and electron density. Residues are color-coded according to the number of geometric quality criteria for which they contain at least one outlier: green = 0, yellow = 1, orange = 2 and red = 3 or more. A red dot above a residue indicates a poor fit to the electron density ( $RSRZ > 2$ ). Stretches of 2 or more consecutive residues without any outlier are shown as a green connector. Residues present in the sample, but not in the model, are shown in grey.

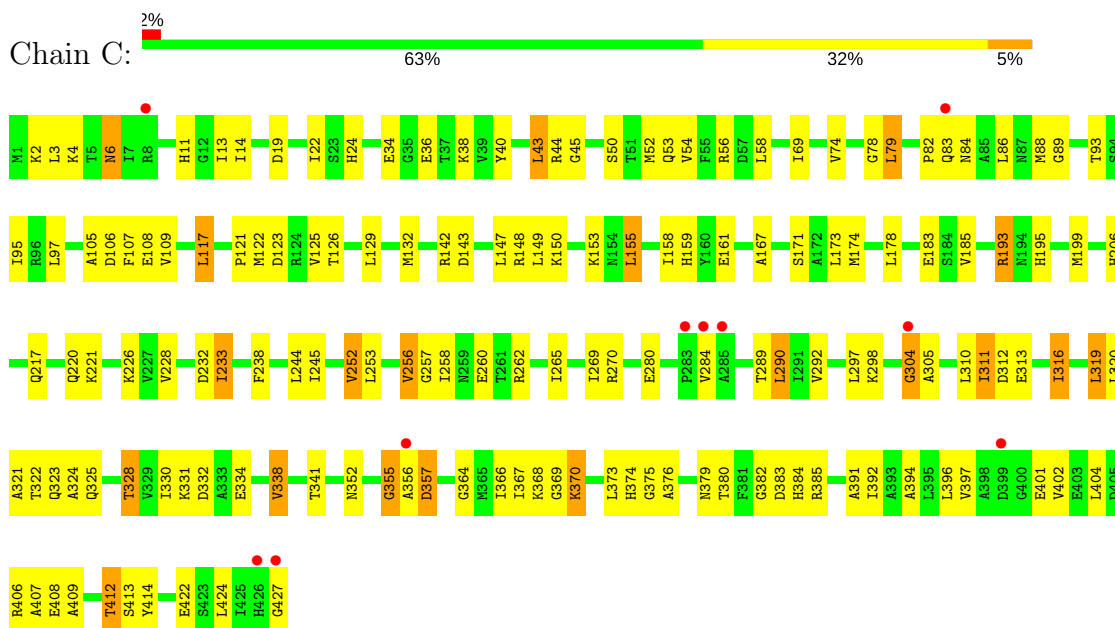
- Molecule 1: 5-enolpyruvylshikimate-3-phosphate synthase



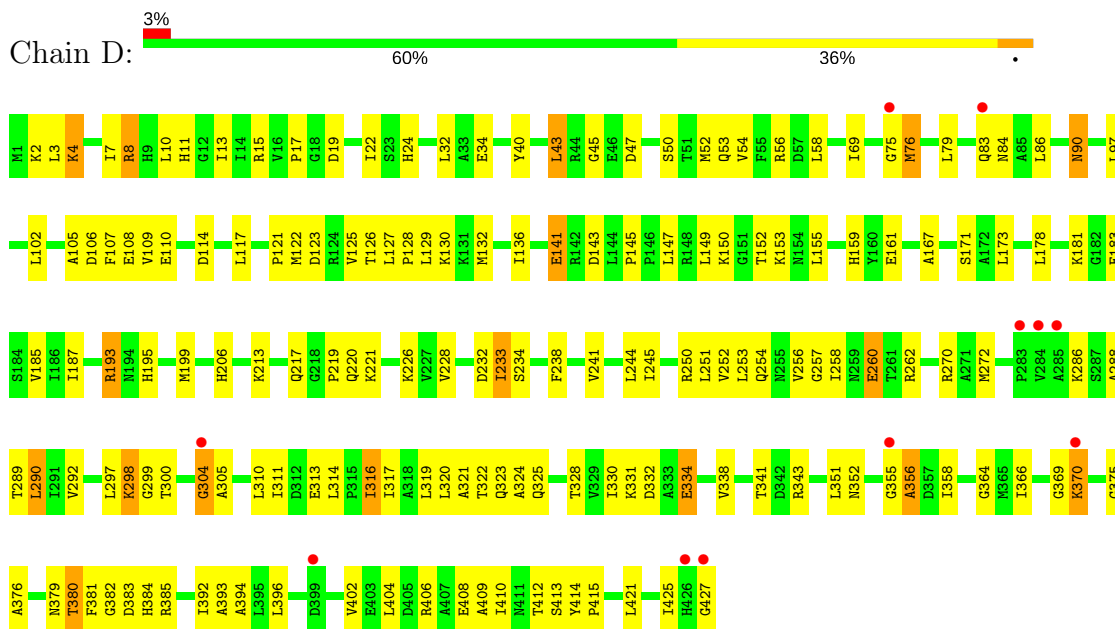
- Molecule 1: 5-enolpyruvylshikimate-3-phosphate synthase



- Molecule 1: 5-enolpyruvylshikimate-3-phosphate synthase



- Molecule 1: 5-enolpyruvylshikimate-3-phosphate synthase



## 4 Data and refinement statistics i

Property	Value	Source
Space group	P 1 21 1	Depositor
Cell constants a, b, c, $\alpha$ , $\beta$ , $\gamma$	82.50Å 149.71Å 88.01Å 90.00° 91.22° 90.00°	Depositor
Resolution (Å)	10.00 – 2.20 30.06 – 2.21	Depositor EDS
% Data completeness (in resolution range)	(Not available) (10.00-2.20) 96.6 (30.06-2.21)	Depositor EDS
$R_{merge}$	(Not available)	Depositor
$R_{sym}$	(Not available)	Depositor
$\langle I/\sigma(I) \rangle$ <sup>1</sup>	6.76 (at 2.22Å)	Xtrriage
Refinement program	X-PLOR 3.851	Depositor
R, $R_{free}$	0.196 , 0.236 0.205 , (Not available)	Depositor DCC
$R_{free}$ test set	No test flags present.	wwPDB-VP
Wilson B-factor (Å <sup>2</sup> )	17.1	Xtrriage
Anisotropy	0.100	Xtrriage
Bulk solvent $k_{sol}$ (e/Å <sup>3</sup> ), $B_{sol}$ (Å <sup>2</sup> )	0.36 , 44.0	EDS
L-test for twinning <sup>2</sup>	$\langle  L  \rangle = 0.50$ , $\langle L^2 \rangle = 0.33$	Xtrriage
Estimated twinning fraction	0.053 for h,-k,-l	Xtrriage
$F_o, F_c$ correlation	0.92	EDS
Total number of atoms	13729	wwPDB-VP
Average B, all atoms (Å <sup>2</sup> )	18.0	wwPDB-VP

Xtrriage's analysis on translational NCS is as follows: *The largest off-origin peak in the Patterson function is 3.81% of the height of the origin peak. No significant pseudotranslation is detected.*

<sup>1</sup>Intensities estimated from amplitudes.

<sup>2</sup>Theoretical values of  $\langle |L| \rangle$ ,  $\langle L^2 \rangle$  for acentric reflections are 0.5, 0.333 respectively for untwinned datasets, and 0.375, 0.2 for perfectly twinned datasets.

## 5 Model quality i

### 5.1 Standard geometry i

Bond lengths and bond angles in the following residue types are not validated in this section: SPQ

The Z score for a bond length (or angle) is the number of standard deviations the observed value is removed from the expected value. A bond length (or angle) with  $|Z| > 5$  is considered an outlier worth inspection. RMSZ is the root-mean-square of all Z scores of the bond lengths (or angles).

Mol	Chain	Bond lengths		Bond angles	
		RMSZ	# Z  >5	RMSZ	# Z  >5
1	A	0.34	0/3252	0.66	1/4391 (0.0%)
1	B	0.33	0/3252	0.65	2/4391 (0.0%)
1	C	0.31	0/3252	0.62	0/4391
1	D	0.31	0/3252	0.62	0/4391
All	All	0.32	0/13008	0.63	3/17564 (0.0%)

There are no bond length outliers.

All (3) bond angle outliers are listed below:

Mol	Chain	Res	Type	Atoms	Z	Observed(°)	Ideal(°)
1	B	75	GLY	N-CA-C	6.68	129.81	113.10
1	B	369	GLY	N-CA-C	5.81	127.63	113.10
1	A	369	GLY	N-CA-C	5.80	127.59	113.10

There are no chirality outliers.

There are no planarity outliers.

### 5.2 Too-close contacts i

In the following table, the Non-H and H(model) columns list the number of non-hydrogen atoms and hydrogen atoms in the chain respectively. The H(added) column lists the number of hydrogen atoms added and optimized by MolProbity. The Clashes column lists the number of clashes within the asymmetric unit, whereas Symm-Clashes lists symmetry related clashes.

Mol	Chain	Non-H	H(model)	H(added)	Clashes	Symm-Clashes
1	A	3212	0	3325	164	0
1	B	3212	0	3325	163	0
1	C	3212	0	3325	159	0
1	D	3212	0	3325	172	0

*Continued on next page...*



*Continued from previous page...*

Mol	Chain	Non-H	H(model)	H(added)	Clashes	Symm-Clashes
2	A	27	0	9	1	0
2	B	27	0	9	1	0
2	C	27	0	9	1	0
2	D	27	0	9	2	0
3	A	219	0	0	15	0
3	B	232	0	0	16	0
3	C	165	0	0	5	0
3	D	157	0	0	14	0
All	All	13729	0	13336	658	0

The all-atom clashscore is defined as the number of clashes found per 1000 atoms (including hydrogen atoms). The all-atom clashscore for this structure is 25.

All (658) close contacts within the same asymmetric unit are listed below, sorted by their clash magnitude.

Atom-1	Atom-2	Interatomic distance (Å)	Clash overlap (Å)
1:B:233:ILE:H	1:B:233:ILE:HD12	1.10	1.15
1:A:233:ILE:HD12	1:A:233:ILE:H	1.05	1.14
1:A:321:ALA:HB1	1:A:328:THR:HG21	1.19	1.13
1:D:233:ILE:H	1:D:233:ILE:HD12	1.05	1.09
1:C:233:ILE:H	1:C:233:ILE:HD12	1.15	1.08
1:C:321:ALA:HB1	1:C:328:THR:HG21	1.10	1.08
1:C:352:ASN:HA	1:C:356:ALA:HA	1.36	1.06
1:A:4:LYS:HD2	1:A:4:LYS:H	1.16	1.05
1:A:256:VAL:HG11	1:A:290:LEU:HD22	1.37	1.02
1:D:256:VAL:HG21	1:D:290:LEU:HD22	1.37	1.02
1:A:380:THR:HG22	1:A:382:GLY:H	1.25	1.01
1:D:4:LYS:HD2	1:D:4:LYS:H	1.30	0.97
1:B:43:LEU:HD13	1:B:45:GLY:H	1.30	0.96
1:A:316:ILE:HG22	1:A:392:ILE:HD11	1.46	0.95
1:B:352:ASN:HA	1:B:356:ALA:HA	1.49	0.95
1:A:233:ILE:CD1	1:A:233:ILE:H	1.80	0.93
1:B:256:VAL:HG21	1:B:290:LEU:HD22	1.51	0.93
1:D:233:ILE:H	1:D:233:ILE:CD1	1.82	0.92
1:C:325:GLN:NE2	1:C:370:LYS:HG3	1.86	0.91
1:D:380:THR:HG22	1:D:382:GLY:H	1.36	0.91
1:C:328:THR:HG23	1:C:367:ILE:HB	1.52	0.91
1:D:322:THR:HG22	1:D:323:GLN:HE21	1.37	0.89
1:D:43:LEU:HD22	1:D:45:GLY:H	1.38	0.89
1:A:322:THR:HG22	1:A:323:GLN:HE21	1.39	0.88
1:D:245:ILE:HG23	1:D:396:LEU:HD11	1.54	0.87

*Continued on next page...*

*Continued from previous page...*

Atom-1	Atom-2	Interatomic distance (Å)	Clash overlap (Å)
1:A:245:ILE:HG23	1:A:396:LEU:HD11	1.57	0.86
1:C:321:ALA:CB	1:C:328:THR:HG21	2.02	0.85
1:A:325:GLN:NE2	1:A:370:LYS:HG3	1.90	0.85
1:D:233:ILE:N	1:D:233:ILE:HD12	1.90	0.84
1:B:233:ILE:CD1	1:B:233:ILE:H	1.83	0.84
1:C:43:LEU:HD22	1:C:45:GLY:H	1.43	0.84
1:A:233:ILE:N	1:A:233:ILE:HD12	1.90	0.83
1:C:233:ILE:CD1	1:C:233:ILE:H	1.88	0.83
1:D:341:THR:HG23	1:D:383:ASP:HB2	1.60	0.83
1:B:322:THR:HG22	1:B:323:GLN:HE21	1.44	0.82
1:A:321:ALA:CB	1:A:328:THR:HG21	2.08	0.82
1:A:13:ILE:HA	1:A:252:VAL:HG13	1.59	0.81
1:C:233:ILE:HD12	1:C:233:ILE:N	1.95	0.81
1:D:300:THR:H	1:D:328:THR:HG22	1.46	0.80
1:A:43:LEU:HD13	1:A:45:GLY:H	1.46	0.80
1:D:245:ILE:HG13	1:D:323:GLN:HG3	1.63	0.80
1:D:328:THR:HG23	3:D:1840:HOH:O	1.81	0.80
1:C:321:ALA:HB1	1:C:328:THR:CG2	2.03	0.80
1:D:4:LYS:H	1:D:4:LYS:CD	1.95	0.80
1:B:32:LEU:HD22	1:B:76:MET:HE3	1.63	0.79
1:B:325:GLN:NE2	1:B:370:LYS:HG3	1.98	0.79
1:A:244:LEU:HG	1:A:292:VAL:HG21	1.65	0.79
1:D:322:THR:HG22	1:D:323:GLN:NE2	1.97	0.78
1:A:321:ALA:HB1	1:A:328:THR:CG2	2.08	0.78
1:D:380:THR:HG22	1:D:382:GLY:N	1.97	0.78
1:B:245:ILE:HG23	1:B:396:LEU:HD11	1.65	0.78
1:A:195:HIS:HE1	1:A:262:ARG:HH11	1.31	0.77
1:B:206:HIS:H	1:B:220:GLN:HE22	1.33	0.77
1:D:13:ILE:HA	1:D:252:VAL:HG13	1.65	0.77
1:D:13:ILE:HG12	1:D:252:VAL:HG11	1.66	0.77
1:A:380:THR:HG22	1:A:382:GLY:N	1.98	0.77
1:C:4:LYS:HD2	1:C:4:LYS:H	1.49	0.77
1:D:126:THR:HA	1:D:136:ILE:HD12	1.68	0.76
1:B:394:ALA:HB1	1:B:402:VAL:HG11	1.66	0.76
1:A:256:VAL:HG12	1:A:288:ALA:O	1.85	0.76
1:A:379:ASN:HD22	1:A:381:PHE:H	1.33	0.76
1:B:245:ILE:HG13	1:B:323:GLN:HG3	1.68	0.76
1:C:125:VAL:O	1:C:129:LEU:HD23	1.85	0.75
1:B:53:GLN:HE22	1:B:56:ARG:HE	1.33	0.75
1:B:53:GLN:NE2	1:B:56:ARG:HE	1.83	0.75
1:B:233:ILE:HD12	1:B:233:ILE:N	1.95	0.75

*Continued on next page...*

*Continued from previous page...*

Atom-1	Atom-2	Interatomic distance (Å)	Clash overlap (Å)
1:A:245:ILE:HG13	1:A:323:GLN:HG3	1.67	0.75
1:B:379:ASN:HD22	1:B:381:PHE:H	1.33	0.75
1:C:385:ARG:HH11	1:C:385:ARG:HG3	1.50	0.75
1:C:195:HIS:HE1	1:C:262:ARG:HH11	1.34	0.75
1:D:254:GLN:HA	1:D:289:THR:HG22	1.70	0.74
1:B:322:THR:CG2	1:B:323:GLN:HE21	2.01	0.74
1:C:313:GLU:O	1:C:316:ILE:HD12	1.88	0.73
1:D:234:SER:HB3	1:D:385:ARG:NH2	2.03	0.73
1:A:352:ASN:HA	1:A:356:ALA:HA	1.70	0.73
1:A:324:ALA:O	1:A:369:GLY:HA3	1.87	0.73
1:D:392:ILE:HD12	1:D:393:ALA:N	2.03	0.72
1:D:352:ASN:HA	1:D:356:ALA:HA	1.72	0.72
1:C:322:THR:HG22	1:C:323:GLN:HE21	1.54	0.72
1:B:13:ILE:HA	1:B:252:VAL:HG13	1.71	0.72
1:C:97:LEU:HD22	1:C:171:SER:HB2	1.71	0.72
1:B:355:GLY:HA3	1:B:373:LEU:HD23	1.70	0.72
1:C:83:GLN:CD	1:C:83:GLN:H	1.93	0.72
1:D:206:HIS:H	1:D:220:GLN:HE22	1.38	0.72
1:A:206:HIS:H	1:A:220:GLN:HE22	1.36	0.72
1:C:316:ILE:CG2	1:C:392:ILE:HD11	2.20	0.71
1:D:195:HIS:HE1	1:D:262:ARG:HH11	1.37	0.71
1:B:380:THR:HG22	1:B:382:GLY:H	1.55	0.71
1:A:106:ASP:HB2	1:A:153:LYS:HE2	1.73	0.71
1:B:299:GLY:HA2	1:B:328:THR:HG22	1.72	0.71
1:C:245:ILE:HG23	1:C:396:LEU:HD11	1.72	0.71
1:B:380:THR:HG22	1:B:382:GLY:N	2.05	0.71
1:B:150:LYS:HE3	3:B:1740:HOH:O	1.91	0.71
1:B:136:ILE:HG12	1:B:149:LEU:HG	1.73	0.70
1:B:97:LEU:HD22	1:B:171:SER:HB2	1.73	0.70
1:A:4:LYS:HD2	1:A:4:LYS:N	1.99	0.70
1:C:352:ASN:HA	1:C:356:ALA:CA	2.19	0.70
1:D:13:ILE:HG12	1:D:252:VAL:CG1	2.21	0.70
1:C:183:GLU:HB2	1:C:217:GLN:HE22	1.58	0.69
1:B:355:GLY:HA3	1:B:373:LEU:CD2	2.22	0.69
1:C:394:ALA:CB	1:C:402:VAL:HG11	2.22	0.69
1:A:379:ASN:ND2	1:A:381:PHE:H	1.89	0.69
1:C:40:TYR:HE1	1:C:226:LYS:HG3	1.57	0.69
1:C:245:ILE:CG2	1:C:396:LEU:HD11	2.23	0.69
1:C:322:THR:HG22	1:C:323:GLN:NE2	2.07	0.69
1:B:90:ASN:ND2	3:B:1699:HOH:O	2.25	0.69
1:C:3:LEU:HB2	1:C:402:VAL:HG13	1.74	0.69

*Continued on next page...*

*Continued from previous page...*

Atom-1	Atom-2	Interatomic distance (Å)	Clash overlap (Å)
1:A:256:VAL:HG11	1:A:290:LEU:CD2	2.21	0.68
1:A:233:ILE:HG13	1:A:257:GLY:O	1.94	0.68
1:B:260:GLU:H	1:B:260:GLU:CD	1.94	0.68
1:B:195:HIS:HE1	1:B:262:ARG:HH11	1.41	0.68
1:D:253:LEU:N	1:D:253:LEU:HD22	2.09	0.68
1:D:40:TYR:HE1	1:D:226:LYS:HG3	1.57	0.68
1:B:394:ALA:CB	1:B:402:VAL:HG11	2.23	0.68
1:D:394:ALA:CB	1:D:402:VAL:HG11	2.24	0.67
1:C:380:THR:HG21	1:C:409:ALA:HB3	1.75	0.67
1:A:54:VAL:HG21	1:A:88:MET:CE	2.25	0.67
1:B:195:HIS:HB3	1:B:199:MET:HE2	1.76	0.67
1:D:233:ILE:HG13	1:D:257:GLY:O	1.94	0.67
1:C:22:ILE:HA	1:C:199:MET:HE1	1.76	0.67
1:C:245:ILE:HG13	1:C:323:GLN:HG3	1.76	0.66
1:D:370:LYS:HE2	1:D:370:LYS:HA	1.76	0.66
1:A:244:LEU:HG	1:A:292:VAL:CG2	2.25	0.66
1:D:324:ALA:O	1:D:369:GLY:HA3	1.96	0.66
1:B:244:LEU:HG	1:B:292:VAL:HG21	1.75	0.66
1:B:324:ALA:O	1:B:369:GLY:HA3	1.96	0.66
1:A:34:GLU:OE1	1:A:221:LYS:HD2	1.96	0.66
1:D:394:ALA:HB1	1:D:402:VAL:HG11	1.78	0.66
1:C:312:ASP:HB3	1:C:385:ARG:NH1	2.10	0.66
1:B:15:ARG:HB3	1:B:15:ARG:HH11	1.60	0.65
1:B:43:LEU:CD1	1:B:45:GLY:H	2.05	0.65
1:D:106:ASP:CB	1:D:153:LYS:HE2	2.25	0.65
1:B:134:VAL:HG12	1:B:136:ILE:HG13	1.78	0.65
1:B:234:SER:HB3	1:B:385:ARG:NH2	2.11	0.65
1:D:245:ILE:CD1	1:D:320:LEU:HD12	2.25	0.65
1:D:289:THR:HG21	3:D:1861:HOH:O	1.96	0.65
1:B:300:THR:H	1:B:328:THR:HG22	1.62	0.65
1:A:3:LEU:HB2	1:A:402:VAL:HG13	1.78	0.65
1:C:328:THR:CG2	1:C:367:ILE:HB	2.26	0.65
1:B:238:PHE:CD2	1:B:316:ILE:HG21	2.32	0.64
1:A:394:ALA:HB1	1:A:402:VAL:HG11	1.78	0.64
1:D:245:ILE:HD13	1:D:320:LEU:HD12	1.78	0.64
1:A:195:HIS:CE1	1:A:262:ARG:HH11	2.13	0.64
1:B:258:ILE:HG23	1:B:258:ILE:O	1.95	0.64
1:B:380:THR:HG21	1:B:409:ALA:HB3	1.80	0.64
1:D:106:ASP:HB2	1:D:153:LYS:HE2	1.80	0.64
1:D:8:ARG:HH11	1:D:8:ARG:HB3	1.63	0.64
1:B:254:GLN:HA	1:B:289:THR:HG22	1.78	0.64

*Continued on next page...*

*Continued from previous page...*

Atom-1	Atom-2	Interatomic distance (Å)	Clash overlap (Å)
1:C:297:LEU:C	1:C:298:LYS:HD3	2.18	0.64
1:B:15:ARG:NH1	1:B:15:ARG:HB3	2.13	0.63
1:B:195:HIS:HB3	1:B:199:MET:CE	2.28	0.63
1:C:256:VAL:HG11	1:C:290:LEU:HD22	1.80	0.63
1:D:297:LEU:C	1:D:298:LYS:HD3	2.17	0.63
1:C:195:HIS:CE1	1:C:262:ARG:HH11	2.16	0.63
1:B:270:ARG:HH11	1:B:270:ARG:HG2	1.64	0.63
1:A:22:ILE:HA	1:A:199:MET:HE1	1.81	0.63
1:C:238:PHE:HZ	1:C:385:ARG:HD3	1.63	0.63
1:C:341:THR:HG23	1:C:383:ASP:HB2	1.81	0.63
1:B:379:ASN:ND2	1:B:381:PHE:H	1.96	0.63
1:C:43:LEU:HD22	1:C:45:GLY:N	2.12	0.63
1:B:245:ILE:CG2	1:B:396:LEU:HD11	2.28	0.62
1:A:328:THR:HG23	1:A:367:ILE:HB	1.81	0.62
1:B:338:VAL:O	1:B:338:VAL:HG22	1.98	0.62
1:B:237:ALA:HB1	1:B:316:ILE:HD11	1.80	0.62
1:B:15:ARG:NE	3:B:1747:HOH:O	2.31	0.62
1:B:299:GLY:CA	1:B:328:THR:HG22	2.30	0.62
1:D:126:THR:HA	1:D:136:ILE:CD1	2.29	0.62
1:D:121:PRO:HD2	1:D:338:VAL:CG2	2.29	0.62
1:D:245:ILE:CG2	1:D:396:LEU:HD11	2.28	0.62
1:B:341:THR:HG23	1:B:383:ASP:HB2	1.82	0.62
1:C:258:ILE:HG23	1:C:258:ILE:O	1.98	0.62
1:D:54:VAL:O	1:D:58:LEU:HD13	1.99	0.62
1:A:8:ARG:HE	1:A:8:ARG:HA	1.64	0.61
1:D:234:SER:HB3	1:D:385:ARG:HH22	1.63	0.61
1:C:206:HIS:H	1:C:220:GLN:HE22	1.48	0.61
1:C:408:GLU:H	1:C:408:GLU:CD	2.04	0.61
1:A:380:THR:HG21	1:A:409:ALA:CB	2.31	0.61
1:A:394:ALA:CB	1:A:402:VAL:HG11	2.31	0.61
1:A:245:ILE:CG2	1:A:396:LEU:HD11	2.29	0.61
1:D:343:ARG:NH2	1:D:385:ARG:HG3	2.16	0.61
1:D:11:HIS:HB2	1:D:427:GLY:O	2.00	0.61
1:B:75:GLY:O	1:B:76:MET:CB	2.48	0.61
1:C:319:LEU:O	1:C:322:THR:HB	2.01	0.61
1:A:13:ILE:HG12	1:A:252:VAL:HG11	1.81	0.60
1:C:245:ILE:CD1	1:C:320:LEU:HD12	2.31	0.60
1:C:40:TYR:CE1	1:C:226:LYS:HG3	2.35	0.60
1:C:19:ASP:HA	1:C:232:ASP:HB2	1.83	0.60
1:A:88:MET:CE	1:A:94:SER:HB3	2.31	0.60
1:A:90:ASN:ND2	3:A:1636:HOH:O	2.33	0.60

*Continued on next page...*

*Continued from previous page...*

Atom-1	Atom-2	Interatomic distance (Å)	Clash overlap (Å)
1:B:244:LEU:HG	1:B:292:VAL:CG2	2.30	0.60
1:A:193:ARG:HD2	3:A:1533:HOH:O	2.01	0.60
1:D:125:VAL:O	1:D:129:LEU:HD13	2.00	0.60
1:A:32:LEU:O	1:A:75:GLY:O	2.19	0.60
1:C:142:ARG:HD2	3:C:1784:HOH:O	2.02	0.60
1:D:341:THR:CG2	1:D:383:ASP:HB2	2.31	0.60
1:A:302:ILE:HG23	1:A:306:LEU:HD23	1.84	0.60
1:A:379:ASN:HD22	1:A:381:PHE:N	1.99	0.60
1:D:83:GLN:CD	1:D:83:GLN:H	2.05	0.60
1:B:19:ASP:HA	1:B:232:ASP:HB2	1.83	0.59
1:B:256:VAL:HG21	1:B:290:LEU:CD2	2.29	0.59
1:C:324:ALA:O	1:C:369:GLY:HA3	2.02	0.59
1:D:43:LEU:HD22	1:D:45:GLY:N	2.12	0.59
1:B:319:LEU:O	1:B:322:THR:HB	2.02	0.59
1:A:4:LYS:CD	1:A:4:LYS:H	1.99	0.59
1:C:125:VAL:HG22	1:C:129:LEU:HD23	1.84	0.59
1:C:404:LEU:HD22	1:C:407:ALA:HB2	1.84	0.59
1:D:122:MET:HG3	1:D:147:LEU:HD11	1.83	0.59
1:A:304:GLY:O	1:A:305:ALA:HB3	2.03	0.59
1:C:394:ALA:HB2	1:C:402:VAL:HG11	1.83	0.59
1:C:4:LYS:HE2	1:C:422:GLU:OE1	2.03	0.59
1:B:195:HIS:CE1	1:B:262:ARG:HH11	2.19	0.59
1:C:394:ALA:HB1	1:C:402:VAL:HG11	1.85	0.59
1:D:379:ASN:ND2	1:D:381:PHE:H	1.99	0.59
1:B:13:ILE:HG12	1:B:252:VAL:CG1	2.32	0.58
1:C:132:MET:HB3	1:C:155:LEU:HD22	1.85	0.58
1:C:132:MET:HB3	1:C:155:LEU:CD2	2.33	0.58
1:D:7:ILE:HD11	1:D:425:ILE:HG23	1.85	0.58
1:B:245:ILE:HG23	1:B:396:LEU:HD21	1.85	0.58
1:C:253:LEU:N	1:C:253:LEU:HD22	2.18	0.58
1:A:97:LEU:HD22	1:A:171:SER:HB2	1.84	0.58
1:B:121:PRO:HD2	1:B:338:VAL:CG2	2.34	0.58
1:D:105:ALA:HB1	1:D:107:PHE:CZ	2.38	0.58
1:C:3:LEU:HD23	1:C:391:ALA:HA	1.85	0.58
1:A:258:ILE:O	1:A:258:ILE:HG23	2.02	0.58
1:D:40:TYR:CE1	1:D:226:LYS:HG3	2.38	0.58
1:A:316:ILE:HG22	1:A:392:ILE:CD1	2.27	0.58
1:C:53:GLN:NE2	1:C:56:ARG:HE	2.01	0.58
1:A:380:THR:HG21	1:A:409:ALA:HB3	1.86	0.58
1:D:260:GLU:H	1:D:260:GLU:CD	2.06	0.58
1:A:83:GLN:H	1:A:83:GLN:CD	2.07	0.58

*Continued on next page...*

*Continued from previous page...*

Atom-1	Atom-2	Interatomic distance (Å)	Clash overlap (Å)
1:C:13:ILE:HA	1:C:252:VAL:HG13	1.86	0.57
1:C:149:LEU:HD23	1:C:150:LYS:N	2.19	0.57
1:C:238:PHE:CZ	1:C:385:ARG:HD3	2.39	0.57
1:C:374:HIS:HA	1:C:397:VAL:HG13	1.86	0.57
1:A:260:GLU:H	1:A:260:GLU:CD	2.08	0.57
1:A:341:THR:HG23	1:A:383:ASP:HB2	1.87	0.57
1:D:183:GLU:HB2	1:D:217:GLN:HE22	1.68	0.57
1:D:300:THR:N	1:D:328:THR:HG22	2.17	0.57
1:D:4:LYS:HD2	1:D:4:LYS:N	2.12	0.57
1:C:106:ASP:HB2	1:C:153:LYS:HE2	1.86	0.57
1:C:245:ILE:HD11	1:C:320:LEU:HD12	1.87	0.57
1:B:13:ILE:HG12	1:B:252:VAL:HG11	1.87	0.57
1:D:195:HIS:CE1	1:D:262:ARG:HH11	2.20	0.57
1:A:358:ILE:HG12	1:A:367:ILE:HG12	1.87	0.57
1:B:297:LEU:HD22	1:B:297:LEU:N	2.19	0.57
1:D:193:ARG:HD2	3:D:1842:HOH:O	2.05	0.57
1:C:174:MET:O	1:C:178:LEU:HD13	2.05	0.56
1:D:244:LEU:HG	1:D:292:VAL:HG11	1.87	0.56
1:A:13:ILE:HG12	1:A:252:VAL:CG1	2.34	0.56
1:C:406:ARG:HA	1:C:408:GLU:OE2	2.04	0.56
1:B:319:LEU:HD12	1:B:392:ILE:HG13	1.87	0.56
1:C:3:LEU:HD21	1:C:404:LEU:HD12	1.87	0.56
1:D:228:VAL:HG23	3:D:1892:HOH:O	2.05	0.56
1:A:193:ARG:HD3	2:A:1451:SPQ:H2	1.88	0.56
1:A:52:MET:HE2	1:A:62:ILE:HG21	1.86	0.56
1:D:228:VAL:HG23	1:D:228:VAL:O	2.06	0.56
1:A:183:GLU:HB2	1:A:217:GLN:HE22	1.70	0.56
1:B:384:HIS:HD2	1:B:413:SER:OG	1.89	0.56
1:D:313:GLU:O	1:D:316:ILE:HD12	2.06	0.56
1:A:355:GLY:HA3	1:A:373:LEU:HD23	1.87	0.56
1:A:343:ARG:NH2	1:A:385:ARG:HG3	2.20	0.56
1:D:149:LEU:HD23	1:D:149:LEU:C	2.26	0.56
1:D:185:VAL:HG23	1:D:185:VAL:O	2.06	0.55
1:A:53:GLN:HE22	1:A:56:ARG:HE	1.53	0.55
1:C:13:ILE:HG12	1:C:252:VAL:CG1	2.36	0.55
1:A:88:MET:HE2	1:A:94:SER:HB3	1.87	0.55
1:A:158:ILE:HD11	1:A:160:TYR:HB2	1.87	0.55
1:C:185:VAL:HG23	1:C:185:VAL:O	2.06	0.55
1:A:319:LEU:HD12	1:A:392:ILE:HG13	1.87	0.55
1:B:299:GLY:HA2	1:B:328:THR:CG2	2.37	0.55
1:C:244:LEU:HG	1:C:292:VAL:HG11	1.88	0.55

*Continued on next page...*

*Continued from previous page...*

Atom-1	Atom-2	Interatomic distance (Å)	Clash overlap (Å)
1:C:304:GLY:O	1:C:305:ALA:HB3	2.06	0.55
1:B:83:GLN:H	1:B:83:GLN:CD	2.09	0.55
1:D:319:LEU:O	1:D:322:THR:HB	2.07	0.55
1:A:117:LEU:HD13	1:A:145:PRO:HG2	1.89	0.55
1:A:54:VAL:HG21	1:A:88:MET:HE3	1.88	0.55
1:C:384:HIS:HD2	1:C:413:SER:OG	1.89	0.55
1:A:8:ARG:NE	1:A:8:ARG:HA	2.22	0.55
1:D:380:THR:HG21	1:D:409:ALA:HB3	1.89	0.55
1:B:253:LEU:HD22	1:B:253:LEU:N	2.22	0.55
1:C:50:SER:O	1:C:54:VAL:HG23	2.07	0.54
1:D:40:TYR:CE1	1:D:226:LYS:HE3	2.41	0.54
1:A:254:GLN:HA	1:A:289:THR:HG22	1.90	0.54
1:D:129:LEU:HB2	1:D:136:ILE:HD11	1.90	0.54
1:A:53:GLN:NE2	1:A:56:ARG:HE	2.05	0.54
1:C:88:MET:HG3	1:C:95:ILE:HB	1.89	0.54
1:C:228:VAL:HG23	1:C:228:VAL:O	2.06	0.54
1:D:17:PRO:HG2	3:D:1765:HOH:O	2.06	0.54
1:A:234:SER:HB3	1:A:385:ARG:NH2	2.21	0.54
1:D:83:GLN:HG2	1:D:84:ASN:ND2	2.22	0.54
1:A:119:LYS:HD2	3:A:1645:HOH:O	2.06	0.54
1:A:355:GLY:HA3	1:A:373:LEU:CD2	2.38	0.54
1:C:122:MET:HB2	1:C:143:ASP:O	2.07	0.54
1:C:297:LEU:HD22	1:C:297:LEU:N	2.23	0.54
1:B:75:GLY:O	1:B:76:MET:HB3	2.08	0.54
1:C:380:THR:HG22	1:C:382:GLY:N	2.22	0.53
1:D:299:GLY:HA2	1:D:328:THR:CG2	2.38	0.53
1:D:245:ILE:CG1	1:D:323:GLN:HG3	2.37	0.53
1:D:32:LEU:O	1:D:75:GLY:O	2.25	0.53
1:A:149:LEU:C	1:A:149:LEU:HD23	2.29	0.53
1:B:233:ILE:HG13	1:B:257:GLY:O	2.07	0.53
1:A:238:PHE:CD2	1:A:316:ILE:HG21	2.43	0.53
1:B:355:GLY:N	3:B:1746:HOH:O	2.41	0.53
1:D:355:GLY:O	1:D:356:ALA:HB3	2.08	0.53
1:A:319:LEU:O	1:A:322:THR:HB	2.09	0.53
1:D:19:ASP:HA	1:D:232:ASP:HB2	1.89	0.53
1:A:316:ILE:HG13	3:A:1467:HOH:O	2.08	0.53
1:A:322:THR:CG2	1:A:323:GLN:HE21	2.19	0.52
1:D:380:THR:HG21	1:D:409:ALA:CB	2.39	0.52
1:C:44:ARG:HH11	1:C:44:ARG:HG3	1.74	0.52
1:B:296:ASP:O	1:B:298:LYS:HE2	2.09	0.52
1:B:40:TYR:CE1	1:B:226:LYS:HG3	2.45	0.52

*Continued on next page...*



*Continued from previous page...*

Atom-1	Atom-2	Interatomic distance (Å)	Clash overlap (Å)
1:D:56:ARG:NH2	3:D:1852:HOH:O	2.41	0.52
1:A:52:MET:HE3	1:A:69:ILE:HD12	1.92	0.52
1:A:34:GLU:HG2	1:A:75:GLY:HA2	1.91	0.52
1:B:245:ILE:CG2	1:B:396:LEU:HD21	2.39	0.52
1:D:304:GLY:O	1:D:305:ALA:HB3	2.10	0.52
1:B:19:ASP:HA	1:B:232:ASP:CB	2.40	0.52
1:C:385:ARG:NH1	2:C:1651:SPQ:O9	2.42	0.52
1:A:34:GLU:CD	1:A:221:LYS:HD2	2.30	0.52
1:A:5:THR:HG22	3:A:1656:HOH:O	2.09	0.52
1:C:380:THR:HG22	1:C:382:GLY:H	1.75	0.52
1:A:54:VAL:HG11	1:A:98:ILE:HD13	1.91	0.52
1:B:159:HIS:CD2	1:B:185:VAL:HG22	2.45	0.52
1:B:17:PRO:HB2	1:B:43:LEU:HD23	1.91	0.52
1:D:159:HIS:CD2	1:D:185:VAL:HG22	2.45	0.52
1:C:366:ILE:N	1:C:366:ILE:HD12	2.25	0.52
1:B:380:THR:HG21	1:B:409:ALA:CB	2.41	0.51
1:A:88:MET:CE	1:A:88:MET:HA	2.41	0.51
1:A:7:ILE:HD11	1:A:425:ILE:HG23	1.92	0.51
1:B:90:ASN:HD21	1:B:340:GLU:HG3	1.75	0.51
1:A:384:HIS:HB3	1:A:412:THR:HG22	1.91	0.51
1:C:108:GLU:HA	1:C:149:LEU:O	2.11	0.51
1:C:244:LEU:HG	1:C:292:VAL:CG1	2.41	0.51
1:D:117:LEU:CD1	1:D:145:PRO:HG2	2.40	0.51
1:B:185:VAL:HG23	1:B:185:VAL:O	2.10	0.51
1:B:4:LYS:HD2	1:B:4:LYS:H	1.75	0.51
1:C:316:ILE:HG13	3:C:1657:HOH:O	2.10	0.51
1:D:256:VAL:HG22	1:D:288:ALA:O	2.10	0.51
1:A:233:ILE:CG1	1:A:257:GLY:O	2.57	0.51
1:B:415:PRO:HD2	3:B:1620:HOH:O	2.11	0.51
1:D:53:GLN:NE2	1:D:56:ARG:HE	2.07	0.51
1:D:195:HIS:HB3	1:D:199:MET:CE	2.41	0.50
1:D:75:GLY:O	1:D:76:MET:HB2	2.11	0.50
1:D:90:ASN:ND2	3:D:1841:HOH:O	2.43	0.50
1:B:228:VAL:O	1:B:228:VAL:HG23	2.11	0.50
1:B:237:ALA:HB1	1:B:316:ILE:CD1	2.41	0.50
1:C:121:PRO:HD2	1:C:338:VAL:HG22	1.94	0.50
1:C:260:GLU:CD	1:C:260:GLU:H	2.15	0.50
1:C:52:MET:HE3	1:C:69:ILE:HD12	1.93	0.50
1:D:258:ILE:HG23	1:D:258:ILE:O	2.09	0.50
1:A:233:ILE:N	1:A:233:ILE:CD1	2.60	0.50
1:A:88:MET:HE3	1:A:88:MET:HA	1.92	0.50

*Continued on next page...*

*Continued from previous page...*

Atom-1	Atom-2	Interatomic distance (Å)	Clash overlap (Å)
1:D:152:THR:HG21	3:D:1905:HOH:O	2.10	0.50
1:B:40:TYR:HE1	1:B:226:LYS:HG3	1.75	0.50
1:C:159:HIS:CD2	1:C:185:VAL:HG22	2.46	0.50
1:D:187:ILE:HG12	1:D:213:LYS:HG2	1.92	0.50
1:A:183:GLU:HB2	1:A:217:GLN:NE2	2.27	0.50
1:D:47:ASP:CG	1:D:412:THR:HG23	2.31	0.50
1:C:4:LYS:N	1:C:4:LYS:HD2	2.22	0.50
1:D:127:LEU:HB3	1:D:128:PRO:CD	2.42	0.50
1:D:193:ARG:HD3	2:D:1751:SPQ:H2	1.94	0.50
1:D:34:GLU:OE1	1:D:221:LYS:HD2	2.12	0.50
1:A:412:THR:HG23	3:A:1532:HOH:O	2.12	0.49
1:B:122:MET:O	1:B:125:VAL:HG12	2.11	0.49
1:B:298:LYS:HE3	1:B:298:LYS:N	2.27	0.49
1:D:334:GLU:CD	1:D:334:GLU:H	2.15	0.49
1:A:43:LEU:CD1	1:A:45:GLY:H	2.22	0.49
1:B:300:THR:N	1:B:328:THR:HG22	2.28	0.49
1:D:132:MET:HB3	1:D:155:LEU:HD22	1.94	0.49
1:D:330:ILE:O	1:D:364:GLY:HA3	2.12	0.49
1:C:6:ASN:HD22	1:C:6:ASN:C	2.15	0.49
1:D:321:ALA:HB1	1:D:328:THR:OG1	2.13	0.49
1:C:369:GLY:O	1:C:370:LYS:HB2	2.12	0.49
1:C:13:ILE:HG12	1:C:252:VAL:HG11	1.94	0.49
1:B:233:ILE:CD1	1:B:233:ILE:N	2.64	0.49
1:B:238:PHE:CE2	1:B:316:ILE:CG2	2.95	0.49
1:B:297:LEU:C	1:B:298:LYS:HD3	2.33	0.49
1:C:280:GLU:HB2	1:C:289:THR:HG23	1.93	0.49
1:C:79:LEU:HD13	3:C:1792:HOH:O	2.11	0.49
1:D:52:MET:HE1	1:D:69:ILE:HD12	1.93	0.49
1:A:245:ILE:CG1	1:A:323:GLN:HG3	2.39	0.49
1:A:412:THR:HG21	3:A:1482:HOH:O	2.12	0.49
1:C:195:HIS:HB3	1:C:199:MET:CE	2.43	0.49
1:D:384:HIS:HD2	1:D:413:SER:OG	1.95	0.49
1:A:19:ASP:HA	1:A:232:ASP:HB2	1.94	0.49
1:D:316:ILE:HG13	3:D:1759:HOH:O	2.11	0.49
1:A:54:VAL:HG21	1:A:88:MET:HE1	1.94	0.48
1:D:141:GLU:CD	1:D:141:GLU:H	2.17	0.48
1:D:241:VAL:O	1:D:245:ILE:HB	2.13	0.48
1:A:52:MET:CE	1:A:69:ILE:HD12	2.43	0.48
1:B:122:MET:HB2	1:B:143:ASP:O	2.13	0.48
1:B:4:LYS:HE3	3:B:1750:HOH:O	2.13	0.48
1:B:149:LEU:C	1:B:149:LEU:HD23	2.33	0.48

*Continued on next page...*

*Continued from previous page...*

Atom-1	Atom-2	Interatomic distance (Å)	Clash overlap (Å)
1:B:238:PHE:CE2	1:B:316:ILE:HG21	2.48	0.48
1:B:149:LEU:HD23	1:B:150:LYS:N	2.29	0.48
1:B:303:CYS:O	1:B:304:GLY:O	2.32	0.48
1:A:297:LEU:C	1:A:298:LYS:HD3	2.34	0.48
1:A:319:LEU:CD1	1:A:392:ILE:HG13	2.43	0.48
1:B:127:LEU:C	1:B:127:LEU:HD23	2.32	0.48
1:D:297:LEU:HD22	1:D:297:LEU:N	2.29	0.48
1:A:17:PRO:HB2	1:A:43:LEU:HD23	1.95	0.48
2:D:1751:SPQ:H102	2:D:1751:SPQ:O4P	2.14	0.48
1:A:122:MET:O	1:A:125:VAL:HG12	2.13	0.48
1:D:256:VAL:HG21	1:D:290:LEU:CD2	2.26	0.48
1:D:394:ALA:HB2	1:D:402:VAL:HG11	1.96	0.48
1:B:193:ARG:HA	1:B:261:THR:OG1	2.14	0.48
1:B:3:LEU:HB2	1:B:402:VAL:HG13	1.96	0.48
1:C:122:MET:HG3	1:C:147:LEU:HD11	1.96	0.48
1:C:375:GLY:O	1:C:376:ALA:HB2	2.14	0.48
1:C:74:VAL:O	1:C:78:GLY:HA3	2.14	0.48
1:B:244:LEU:CD2	1:B:292:VAL:HG23	2.44	0.47
1:B:34:GLU:CD	1:B:221:LYS:HD2	2.34	0.47
1:B:8:ARG:HG3	1:B:8:ARG:HH11	1.78	0.47
1:D:149:LEU:HD23	1:D:150:LYS:N	2.29	0.47
1:A:97:LEU:CD2	1:A:171:SER:HB2	2.44	0.47
1:B:24:HIS:HE1	3:B:1560:HOH:O	1.97	0.47
1:B:43:LEU:HD13	1:B:45:GLY:N	2.12	0.47
1:C:149:LEU:C	1:C:149:LEU:HD23	2.34	0.47
1:B:233:ILE:CG1	1:B:257:GLY:O	2.63	0.47
1:A:117:LEU:HD13	1:A:117:LEU:O	2.15	0.47
1:B:183:GLU:HB2	1:B:217:GLN:OE1	2.15	0.47
1:B:366:ILE:HD11	1:D:366:ILE:HG21	1.95	0.47
1:C:123:ASP:HA	1:C:126:THR:OG1	2.15	0.47
1:C:52:MET:CE	1:C:69:ILE:HD12	2.45	0.47
1:D:117:LEU:HD13	1:D:145:PRO:HG2	1.96	0.47
1:C:206:HIS:H	1:C:220:GLN:NE2	2.13	0.47
1:D:24:HIS:HE1	3:D:1761:HOH:O	1.97	0.47
1:C:380:THR:HG21	1:C:409:ALA:CB	2.42	0.47
1:D:19:ASP:HA	1:D:232:ASP:CB	2.44	0.47
1:D:244:LEU:HG	1:D:292:VAL:CG1	2.45	0.47
1:A:14:ILE:HG12	1:A:424:LEU:HD21	1.96	0.47
1:B:272:MET:HE3	1:B:328:THR:HG21	1.96	0.47
1:C:83:GLN:NE2	1:C:84:ASN:H	2.12	0.47
1:A:142:ARG:HD2	3:A:1486:HOH:O	2.14	0.47

*Continued on next page...*

*Continued from previous page...*

Atom-1	Atom-2	Interatomic distance (Å)	Clash overlap (Å)
1:C:19:ASP:HA	1:C:232:ASP:CB	2.44	0.47
1:D:126:THR:O	1:D:130:LYS:HG3	2.15	0.47
1:D:338:VAL:O	1:D:338:VAL:HG22	2.14	0.47
1:A:56:ARG:HA	1:A:60:VAL:O	2.15	0.46
1:B:121:PRO:HD2	1:B:338:VAL:HG23	1.97	0.46
1:A:193:ARG:HA	1:A:261:THR:OG1	2.16	0.46
1:A:322:THR:HG22	1:A:323:GLN:NE2	2.19	0.46
1:B:16:VAL:HG13	3:B:1583:HOH:O	2.14	0.46
1:C:53:GLN:HE22	1:C:56:ARG:HE	1.62	0.46
1:C:6:ASN:ND2	1:C:6:ASN:C	2.66	0.46
1:C:83:GLN:CD	1:C:83:GLN:N	2.63	0.46
1:D:10:LEU:HB3	1:D:251:LEU:HD21	1.97	0.46
1:B:270:ARG:HG2	1:B:270:ARG:NH1	2.31	0.46
1:D:129:LEU:CB	1:D:136:ILE:HD11	2.46	0.46
1:A:121:PRO:HD2	1:A:338:VAL:HG22	1.97	0.46
1:A:127:LEU:HB3	1:A:128:PRO:CD	2.45	0.46
1:A:43:LEU:HD13	1:A:45:GLY:N	2.22	0.46
1:A:90:ASN:HB2	1:A:114:ASP:OD1	2.16	0.46
1:C:244:LEU:CD2	1:C:292:VAL:HG13	2.46	0.46
1:A:127:LEU:HB3	1:A:128:PRO:HD3	1.98	0.46
1:C:245:ILE:HD13	1:C:320:LEU:HD12	1.98	0.46
1:D:34:GLU:HG2	1:D:75:GLY:HA2	1.97	0.46
1:A:253:LEU:HD22	1:A:253:LEU:N	2.31	0.46
1:B:282:ASP:OD1	1:B:284:VAL:HB	2.16	0.46
1:B:120:ARG:NH1	1:B:340:GLU:OE1	2.49	0.46
1:B:4:LYS:HG2	3:B:1737:HOH:O	2.15	0.46
1:C:167:ALA:CB	1:C:193:ARG:HG2	2.45	0.46
1:C:355:GLY:HA3	1:C:373:LEU:HD23	1.97	0.46
1:D:253:LEU:N	1:D:253:LEU:CD2	2.79	0.46
1:A:245:ILE:HG23	1:A:396:LEU:HD21	1.97	0.46
1:C:233:ILE:HG13	1:C:257:GLY:O	2.16	0.46
1:C:384:HIS:CD2	1:C:413:SER:OG	2.68	0.46
1:A:331:LYS:O	1:A:332:ASP:HB2	2.16	0.45
1:C:108:GLU:HG3	1:C:149:LEU:O	2.16	0.45
1:D:122:MET:O	1:D:126:THR:HG23	2.16	0.45
1:A:313:GLU:O	1:A:316:ILE:HD12	2.17	0.45
1:A:9:HIS:HD2	3:A:1479:HOH:O	1.99	0.45
1:B:32:LEU:HD13	1:B:76:MET:CE	2.46	0.45
1:B:325:GLN:HE21	1:B:370:LYS:HG3	1.75	0.45
1:C:265:ILE:O	1:C:269:ILE:HG13	2.16	0.45
1:D:121:PRO:CD	1:D:338:VAL:CG2	2.93	0.45

*Continued on next page...*

*Continued from previous page...*

Atom-1	Atom-2	Interatomic distance (Å)	Clash overlap (Å)
1:A:24:HIS:CD2	1:A:51:THR:OG1	2.70	0.45
1:C:2:LYS:HE3	1:C:401:GLU:CD	2.36	0.45
1:D:406:ARG:HA	1:D:408:GLU:OE2	2.16	0.45
1:D:127:LEU:HB3	1:D:128:PRO:HD3	1.99	0.45
1:B:122:MET:HG3	1:B:147:LEU:HD11	1.97	0.45
1:B:80:LYS:HE3	3:B:1767:HOH:O	2.16	0.45
1:C:24:HIS:HE1	3:C:1652:HOH:O	1.99	0.45
1:A:122:MET:HB2	1:A:143:ASP:O	2.17	0.45
1:A:356:ALA:N	3:A:1534:HOH:O	2.49	0.45
1:B:217:GLN:HG3	3:B:1675:HOH:O	2.17	0.45
1:B:83:GLN:NE2	1:B:84:ASN:H	2.15	0.45
1:D:299:GLY:HA2	1:D:328:THR:HG22	1.99	0.45
1:A:384:HIS:HD2	1:A:413:SER:OG	1.99	0.45
1:B:83:GLN:N	1:B:83:GLN:CD	2.70	0.45
1:A:127:LEU:C	1:A:127:LEU:HD23	2.37	0.44
1:A:285:ALA:O	1:A:286:LYS:HB2	2.17	0.44
1:B:43:LEU:C	1:B:43:LEU:HD13	2.38	0.44
1:C:122:MET:O	1:C:125:VAL:HG12	2.16	0.44
1:C:93:THR:O	1:C:97:LEU:HG	2.17	0.44
1:D:272:MET:O	1:D:298:LYS:HE3	2.17	0.44
1:A:19:ASP:HA	1:A:232:ASP:CB	2.48	0.44
1:B:127:LEU:HB3	1:B:128:PRO:CD	2.47	0.44
1:B:15:ARG:CB	1:B:15:ARG:HH11	2.29	0.44
1:C:330:ILE:O	1:C:364:GLY:HA3	2.17	0.44
1:D:132:MET:HB3	1:D:155:LEU:CD2	2.48	0.44
1:D:289:THR:HG23	3:D:1843:HOH:O	2.17	0.44
1:D:370:LYS:HB3	3:D:1907:HOH:O	2.16	0.44
1:A:52:MET:HE2	1:A:62:ILE:CG2	2.46	0.44
1:B:13:ILE:HG12	1:B:252:VAL:HG13	2.00	0.44
1:B:34:GLU:OE1	1:B:221:LYS:HD2	2.18	0.44
1:B:193:ARG:HD2	3:B:1576:HOH:O	2.18	0.44
1:B:309:ARG:HD3	3:B:1605:HOH:O	2.17	0.44
1:B:389:MET:O	1:B:392:ILE:HG12	2.17	0.44
1:C:370:LYS:HA	1:C:370:LYS:HD3	1.77	0.44
1:B:375:GLY:O	1:B:376:ALA:HB2	2.17	0.44
1:B:79:LEU:HB2	3:B:1628:HOH:O	2.17	0.44
1:C:298:LYS:HD3	1:C:298:LYS:N	2.32	0.44
1:A:43:LEU:HD12	1:A:48:VAL:CG2	2.48	0.44
1:C:13:ILE:HG12	1:C:252:VAL:HG13	1.99	0.44
1:C:89:GLY:O	1:C:117:LEU:HD12	2.18	0.44
1:D:2:LYS:HD3	1:D:2:LYS:C	2.38	0.44

*Continued on next page...*

*Continued from previous page...*

Atom-1	Atom-2	Interatomic distance (Å)	Clash overlap (Å)
1:A:24:HIS:HE1	3:A:1453:HOH:O	2.01	0.44
1:A:11:HIS:HB2	1:A:427:GLY:OXT	2.17	0.44
1:D:167:ALA:CB	1:D:193:ARG:HG2	2.48	0.44
1:A:304:GLY:O	1:A:305:ALA:CB	2.66	0.43
1:A:83:GLN:NE2	1:A:84:ASN:H	2.15	0.43
1:B:376:ALA:O	1:B:402:VAL:HA	2.18	0.43
1:C:11:HIS:HB2	1:C:427:GLY:OXT	2.18	0.43
1:C:132:MET:SD	1:C:158:ILE:HB	2.58	0.43
1:C:385:ARG:HG3	1:C:385:ARG:NH1	2.23	0.43
1:C:125:VAL:HG22	1:C:129:LEU:CD2	2.49	0.43
1:C:195:HIS:HB3	1:C:199:MET:HE3	1.99	0.43
1:D:50:SER:O	1:D:54:VAL:HG23	2.18	0.43
1:A:195:HIS:HB3	1:A:199:MET:CE	2.49	0.43
1:B:185:VAL:O	1:B:185:VAL:CG2	2.67	0.43
1:B:206:HIS:H	1:B:220:GLN:NE2	2.08	0.43
1:D:325:GLN:HE22	1:D:370:LYS:HG2	1.82	0.43
1:A:316:ILE:HG13	1:A:316:ILE:H	1.68	0.43
1:A:338:VAL:HG13	1:A:338:VAL:O	2.18	0.43
1:D:238:PHE:CD2	1:D:316:ILE:HG21	2.54	0.43
1:B:409:ALA:O	1:B:412:THR:HB	2.18	0.43
1:C:14:ILE:HG12	1:C:424:LEU:HD21	2.00	0.43
1:A:384:HIS:CD2	1:A:413:SER:OG	2.72	0.43
1:C:195:HIS:HD2	3:C:1663:HOH:O	2.00	0.43
1:C:334:GLU:H	1:C:334:GLU:CD	2.21	0.43
1:A:206:HIS:H	1:A:220:GLN:NE2	2.12	0.43
1:B:109:VAL:HG22	1:B:110:GLU:N	2.33	0.43
1:A:88:MET:HE2	1:A:94:SER:CB	2.48	0.43
1:A:40:TYR:CE1	1:A:226:LYS:HG3	2.54	0.43
1:A:292:VAL:HG22	1:A:293:GLU:N	2.34	0.43
1:D:195:HIS:HD2	3:D:1766:HOH:O	2.01	0.43
1:C:357:ASP:OD2	1:C:368:LYS:HB3	2.18	0.42
1:A:228:VAL:HG23	1:A:228:VAL:O	2.19	0.42
1:B:245:ILE:CD1	1:B:320:LEU:HD12	2.49	0.42
1:D:122:MET:HB2	1:D:143:ASP:O	2.19	0.42
1:D:22:ILE:HA	1:D:199:MET:HE1	2.00	0.42
1:B:300:THR:O	1:B:328:THR:HA	2.19	0.42
1:B:379:ASN:HD22	1:B:381:PHE:N	2.10	0.42
1:C:260:GLU:CD	1:C:260:GLU:N	2.73	0.42
1:D:313:GLU:O	1:D:317:ILE:HG13	2.20	0.42
1:D:32:LEU:O	1:D:75:GLY:C	2.57	0.42
1:B:10:LEU:HB3	1:B:251:LEU:HD21	2.02	0.42

*Continued on next page...*

*Continued from previous page...*

Atom-1	Atom-2	Interatomic distance (Å)	Clash overlap (Å)
1:B:356:ALA:N	3:B:1561:HOH:O	2.52	0.42
1:C:244:LEU:HD23	1:C:292:VAL:HG13	2.02	0.42
1:D:375:GLY:O	1:D:376:ALA:HB2	2.19	0.42
1:D:376:ALA:O	1:D:402:VAL:HA	2.20	0.42
1:D:384:HIS:HB2	1:D:410:ILE:HA	2.01	0.42
1:A:75:GLY:O	1:A:76:MET:HB2	2.20	0.42
1:C:82:PRO:HG3	1:C:109:VAL:HG23	2.01	0.42
1:D:102:LEU:HD13	1:D:109:VAL:HG11	2.01	0.42
1:C:384:HIS:HB3	1:C:409:ALA:O	2.19	0.42
2:B:1551:SPQ:H101	2:B:1551:SPQ:O4P	2.20	0.42
1:D:121:PRO:HD2	1:D:338:VAL:HG22	2.00	0.42
1:A:142:ARG:HB2	1:A:144:LEU:HD13	2.01	0.42
1:C:311:ILE:HG13	1:C:311:ILE:H	1.46	0.42
1:C:331:LYS:O	1:C:332:ASP:HB2	2.19	0.42
1:C:34:GLU:OE2	1:C:221:LYS:HD2	2.19	0.42
1:C:86:LEU:HD11	1:C:109:VAL:HG21	2.01	0.42
1:D:122:MET:O	1:D:125:VAL:HG12	2.19	0.42
1:D:206:HIS:H	1:D:220:GLN:NE2	2.10	0.42
1:D:314:LEU:HD22	1:D:330:ILE:HD13	2.02	0.42
1:A:337:LYS:NZ	3:A:1569:HOH:O	2.52	0.42
1:A:83:GLN:N	1:A:83:GLN:CD	2.73	0.42
1:B:121:PRO:CD	1:B:338:VAL:CG2	2.98	0.42
1:C:409:ALA:O	1:C:412:THR:HB	2.19	0.42
1:A:260:GLU:CD	1:A:260:GLU:N	2.71	0.41
1:A:245:ILE:CD1	1:A:320:LEU:HD12	2.50	0.41
1:D:402:VAL:O	1:D:402:VAL:HG13	2.20	0.41
1:A:108:GLU:OE1	1:A:148:ARG:NH1	2.53	0.41
1:C:313:GLU:HA	1:C:316:ILE:HD11	2.02	0.41
1:D:195:HIS:HB3	1:D:199:MET:HE2	2.03	0.41
1:D:258:ILE:HG22	1:D:286:LYS:C	2.41	0.41
1:A:316:ILE:CG2	1:A:392:ILE:HD11	2.35	0.41
1:B:131:LYS:HB3	1:B:131:LYS:HE2	1.83	0.41
1:A:338:VAL:HG13	3:A:1469:HOH:O	2.20	0.41
1:A:356:ALA:HB1	1:A:357:ASP:H	1.64	0.41
1:A:38:LYS:HA	1:A:69:ILE:O	2.21	0.41
1:B:339:LYS:O	1:B:340:GLU:C	2.57	0.41
1:B:384:HIS:NE2	1:B:385:ARG:NH1	2.68	0.41
1:C:105:ALA:HB1	1:C:107:PHE:CE2	2.56	0.41
1:C:36:GLU:OE2	1:C:38:LYS:HE2	2.21	0.41
1:D:250:ARG:HA	1:D:292:VAL:O	2.20	0.41
1:A:134:VAL:HG12	1:A:136:ILE:CG1	2.50	0.41

*Continued on next page...*

*Continued from previous page...*

Atom-1	Atom-2	Interatomic distance (Å)	Clash overlap (Å)
1:B:22:ILE:HA	1:B:199:MET:HE1	2.01	0.41
1:B:24:HIS:HD2	1:B:51:THR:OG1	2.03	0.41
1:B:370:LYS:HD3	1:B:370:LYS:HA	1.80	0.41
1:B:384:HIS:CD2	1:B:413:SER:OG	2.71	0.41
1:D:260:GLU:N	1:D:260:GLU:CD	2.72	0.41
1:D:90:ASN:HB2	1:D:114:ASP:OD1	2.21	0.41
1:B:193:ARG:CD	3:B:1576:HOH:O	2.68	0.41
1:C:316:ILE:HG22	1:C:392:ILE:HD11	2.00	0.41
1:C:402:VAL:O	1:C:402:VAL:HG13	2.21	0.41
1:C:4:LYS:H	1:C:4:LYS:CD	2.27	0.41
1:D:15:ARG:HB3	1:D:15:ARG:NH1	2.36	0.41
1:D:384:HIS:CD2	1:D:413:SER:OG	2.73	0.41
1:D:4:LYS:CE	1:D:421:LEU:HD23	2.51	0.41
1:B:43:LEU:HD12	1:B:48:VAL:CG2	2.50	0.41
1:C:253:LEU:N	1:C:253:LEU:CD2	2.84	0.41
1:D:108:GLU:HA	1:D:149:LEU:O	2.21	0.41
1:D:86:LEU:CD1	1:D:109:VAL:HG21	2.50	0.41
1:A:131:LYS:HB3	1:A:131:LYS:HE2	1.85	0.41
1:C:245:ILE:HG21	1:C:396:LEU:HD11	1.99	0.41
1:D:379:ASN:ND2	1:D:381:PHE:N	2.68	0.41
1:B:319:LEU:CD1	1:B:392:ILE:HG13	2.49	0.41
1:C:379:ASN:HD21	1:C:406:ARG:HD3	1.86	0.41
1:D:123:ASP:HA	1:D:126:THR:OG1	2.21	0.41
1:A:384:HIS:CB	1:A:412:THR:HG22	2.52	0.40
1:A:88:MET:HE1	1:A:94:SER:HB3	2.03	0.40
1:B:121:PRO:CD	1:B:338:VAL:HG23	2.51	0.40
1:C:86:LEU:CD1	1:C:109:VAL:HG21	2.51	0.40
1:C:253:LEU:O	1:C:289:THR:HA	2.20	0.40
1:C:304:GLY:O	1:C:305:ALA:CB	2.70	0.40
1:C:34:GLU:CD	1:C:221:LYS:HD2	2.41	0.40
1:C:385:ARG:CG	1:C:385:ARG:NH1	2.76	0.40
1:D:86:LEU:HD11	1:D:109:VAL:HG21	2.03	0.40
1:D:106:ASP:HB3	1:D:153:LYS:HE2	2.02	0.40
1:D:7:ILE:HD11	1:D:425:ILE:CG2	2.51	0.40
1:A:284:VAL:HG22	1:B:284:VAL:HA	2.03	0.40
1:A:303:CYS:O	1:A:304:GLY:O	2.39	0.40
1:B:206:HIS:N	1:B:220:GLN:HE22	2.10	0.40
1:B:335:GLU:O	1:B:338:VAL:HG12	2.20	0.40
1:C:148:ARG:HG2	1:C:148:ARG:NH1	2.36	0.40
1:D:110:GLU:HA	1:D:147:LEU:O	2.21	0.40
1:D:351:LEU:HB2	1:D:358:ILE:HD12	2.03	0.40

*Continued on next page...*



Continued from previous page...

Atom-1	Atom-2	Interatomic distance (Å)	Clash overlap (Å)
1:A:355:GLY:O	1:A:356:ALA:HB3	2.20	0.40
1:B:129:LEU:HD23	1:B:136:ILE:CD1	2.51	0.40
1:B:108:GLU:HA	1:B:149:LEU:O	2.21	0.40
1:B:355:GLY:O	1:B:356:ALA:HB3	2.21	0.40
1:B:357:ASP:OD2	1:B:368:LYS:HG2	2.22	0.40
1:B:8:ARG:HH11	1:B:8:ARG:CG	2.34	0.40
1:D:117:LEU:HD13	1:D:117:LEU:O	2.21	0.40
1:D:181:LYS:HG2	1:D:219:PRO:HD3	2.01	0.40
1:D:83:GLN:CD	1:D:83:GLN:N	2.72	0.40
1:A:311:ILE:HD12	3:A:1452:HOH:O	2.21	0.40
1:C:105:ALA:HB1	1:C:107:PHE:CZ	2.56	0.40
1:D:331:LYS:O	1:D:332:ASP:HB2	2.21	0.40
1:A:117:LEU:CD1	1:A:145:PRO:HG2	2.51	0.40
1:A:412:THR:CG2	3:A:1532:HOH:O	2.68	0.40
1:B:351:LEU:HB2	1:B:358:ILE:HD12	2.04	0.40
1:D:13:ILE:HG12	1:D:252:VAL:HG13	2.03	0.40
1:D:97:LEU:HD22	1:D:171:SER:HB2	2.02	0.40
1:D:415:PRO:HD2	3:D:1828:HOH:O	2.21	0.40

There are no symmetry-related clashes.

## 5.3 Torsion angles [i](#)

### 5.3.1 Protein backbone [i](#)

In the following table, the Percentiles column shows the percent Ramachandran outliers of the chain as a percentile score with respect to all X-ray entries followed by that with respect to entries of similar resolution.

The Analysed column shows the number of residues for which the backbone conformation was analysed, and the total number of residues.

Mol	Chain	Analysed	Favoured	Allowed	Outliers	Percentiles	
1	A	425/427 (100%)	406 (96%)	15 (4%)	4 (1%)	19	17
1	B	425/427 (100%)	403 (95%)	17 (4%)	5 (1%)	14	11
1	C	425/427 (100%)	405 (95%)	15 (4%)	5 (1%)	14	11
1	D	425/427 (100%)	404 (95%)	17 (4%)	4 (1%)	19	17
All	All	1700/1708 (100%)	1618 (95%)	64 (4%)	18 (1%)	16	13

All (18) Ramachandran outliers are listed below:

Mol	Chain	Res	Type
1	A	76	MET
1	A	304	GLY
1	B	304	GLY
1	C	304	GLY
1	D	76	MET
1	D	304	GLY
1	B	76	MET
1	B	284	VAL
1	D	356	ALA
1	D	370	LYS
1	C	355	GLY
1	C	370	LYS
1	A	355	GLY
1	B	357	ASP
1	B	370	LYS
1	C	284	VAL
1	C	357	ASP
1	A	356	ALA

### 5.3.2 Protein sidechains [i](#)

In the following table, the Percentiles column shows the percent sidechain outliers of the chain as a percentile score with respect to all X-ray entries followed by that with respect to entries of similar resolution.

The Analysed column shows the number of residues for which the sidechain conformation was analysed, and the total number of residues.

Mol	Chain	Analysed	Rotameric	Outliers	Percentiles	
1	A	350/350 (100%)	321 (92%)	29 (8%)	12	12
1	B	350/350 (100%)	328 (94%)	22 (6%)	20	22
1	C	350/350 (100%)	328 (94%)	22 (6%)	20	22
1	D	350/350 (100%)	327 (93%)	23 (7%)	18	20
All	All	1400/1400 (100%)	1304 (93%)	96 (7%)	17	18

All (96) residues with a non-rotameric sidechain are listed below:

Mol	Chain	Res	Type
1	A	1	MET
1	A	4	LYS
1	A	8	ARG
1	A	58	LEU

*Continued on next page...*

*Continued from previous page...*

<b>Mol</b>	<b>Chain</b>	<b>Res</b>	<b>Type</b>
1	A	79	LEU
1	A	88	MET
1	A	129	LEU
1	A	141	GLU
1	A	148	ARG
1	A	161	GLU
1	A	178	LEU
1	A	193	ARG
1	A	233	ILE
1	A	260	GLU
1	A	270	ARG
1	A	290	LEU
1	A	298	LYS
1	A	310	LEU
1	A	311	ILE
1	A	319	LEU
1	A	322	THR
1	A	328	THR
1	A	338	VAL
1	A	357	ASP
1	A	379	ASN
1	A	380	THR
1	A	404	LEU
1	A	412	THR
1	A	414	TYR
1	B	3	LEU
1	B	58	LEU
1	B	79	LEU
1	B	117	LEU
1	B	129	LEU
1	B	141	GLU
1	B	173	LEU
1	B	178	LEU
1	B	193	ARG
1	B	233	ILE
1	B	252	VAL
1	B	290	LEU
1	B	298	LYS
1	B	310	LEU
1	B	311	ILE
1	B	319	LEU
1	B	322	THR

*Continued on next page...*

*Continued from previous page...*

<b>Mol</b>	<b>Chain</b>	<b>Res</b>	<b>Type</b>
1	B	340	GLU
1	B	379	ASN
1	B	404	LEU
1	B	412	THR
1	B	414	TYR
1	C	6	ASN
1	C	43	LEU
1	C	58	LEU
1	C	79	LEU
1	C	117	LEU
1	C	155	LEU
1	C	161	GLU
1	C	173	LEU
1	C	193	ARG
1	C	233	ILE
1	C	252	VAL
1	C	256	VAL
1	C	270	ARG
1	C	290	LEU
1	C	310	LEU
1	C	311	ILE
1	C	316	ILE
1	C	319	LEU
1	C	328	THR
1	C	338	VAL
1	C	412	THR
1	C	414	TYR
1	D	3	LEU
1	D	4	LYS
1	D	8	ARG
1	D	43	LEU
1	D	79	LEU
1	D	90	ASN
1	D	141	GLU
1	D	161	GLU
1	D	173	LEU
1	D	178	LEU
1	D	193	ARG
1	D	233	ILE
1	D	260	GLU
1	D	270	ARG
1	D	290	LEU

*Continued on next page...*

*Continued from previous page...*

Mol	Chain	Res	Type
1	D	298	LYS
1	D	310	LEU
1	D	311	ILE
1	D	316	ILE
1	D	334	GLU
1	D	380	THR
1	D	404	LEU
1	D	414	TYR

Some sidechains can be flipped to improve hydrogen bonding and reduce clashes. All (59) such sidechains are listed below:

Mol	Chain	Res	Type
1	A	6	ASN
1	A	9	HIS
1	A	24	HIS
1	A	53	GLN
1	A	84	ASN
1	A	139	GLN
1	A	195	HIS
1	A	217	GLN
1	A	220	GLN
1	A	323	GLN
1	A	325	GLN
1	A	379	ASN
1	A	384	HIS
1	B	6	ASN
1	B	9	HIS
1	B	24	HIS
1	B	53	GLN
1	B	72	GLN
1	B	84	ASN
1	B	90	ASN
1	B	159	HIS
1	B	195	HIS
1	B	201	GLN
1	B	220	GLN
1	B	323	GLN
1	B	325	GLN
1	B	379	ASN
1	B	384	HIS
1	C	6	ASN
1	C	11	HIS

*Continued on next page...*

*Continued from previous page...*

Mol	Chain	Res	Type
1	C	24	HIS
1	C	53	GLN
1	C	72	GLN
1	C	83	GLN
1	C	139	GLN
1	C	159	HIS
1	C	195	HIS
1	C	202	GLN
1	C	217	GLN
1	C	220	GLN
1	C	323	GLN
1	C	325	GLN
1	C	379	ASN
1	C	384	HIS
1	D	6	ASN
1	D	24	HIS
1	D	53	GLN
1	D	72	GLN
1	D	84	ASN
1	D	90	ASN
1	D	159	HIS
1	D	195	HIS
1	D	202	GLN
1	D	217	GLN
1	D	220	GLN
1	D	323	GLN
1	D	325	GLN
1	D	379	ASN
1	D	384	HIS

### 5.3.3 RNA [i](#)

There are no RNA molecules in this entry.

### 5.4 Non-standard residues in protein, DNA, RNA chains [i](#)

There are no non-standard protein/DNA/RNA residues in this entry.

### 5.5 Carbohydrates [i](#)

There are no carbohydrates in this entry.

## 5.6 Ligand geometry

4 ligands are modelled in this entry.

In the following table, the Counts columns list the number of bonds (or angles) for which Mogul statistics could be retrieved, the number of bonds (or angles) that are observed in the model and the number of bonds (or angles) that are defined in the Chemical Component Dictionary. The Link column lists molecule types, if any, to which the group is linked. The Z score for a bond length (or angle) is the number of standard deviations the observed value is removed from the expected value. A bond length (or angle) with  $|Z| > 2$  is considered an outlier worth inspection. RMSZ is the root-mean-square of all Z scores of the bond lengths (or angles).

Mol	Type	Chain	Res	Link	Bond lengths			Bond angles		
					Counts	RMSZ	# Z  > 2	Counts	RMSZ	# Z  > 2
2	SPQ	A	1451	-	18,27,27	3.79	5 (27%)	21,42,42	1.41	2 (9%)
2	SPQ	B	1551	-	18,27,27	3.88	6 (33%)	21,42,42	1.46	2 (9%)
2	SPQ	C	1651	-	18,27,27	3.76	5 (27%)	21,42,42	1.40	1 (4%)
2	SPQ	D	1751	-	18,27,27	3.84	5 (27%)	21,42,42	1.38	2 (9%)

In the following table, the Chirals column lists the number of chiral outliers, the number of chiral centers analysed, the number of these observed in the model and the number defined in the Chemical Component Dictionary. Similar counts are reported in the Torsion and Rings columns. '-' means no outliers of that kind were identified.

Mol	Type	Chain	Res	Link	Chirals	Torsions	Rings
2	SPQ	A	1451	-	-	0/10/45/45	0/1/1/1
2	SPQ	B	1551	-	-	0/10/45/45	0/1/1/1
2	SPQ	C	1651	-	-	0/10/45/45	0/1/1/1
2	SPQ	D	1751	-	-	0/10/45/45	0/1/1/1

All (21) bond length outliers are listed below:

Mol	Chain	Res	Type	Atoms	Z	Observed(Å)	Ideal(Å)
2	B	1551	SPQ	C4-C3	2.34	1.56	1.52
2	D	1751	SPQ	P2-O10	2.45	1.63	1.59
2	B	1551	SPQ	C6-C1	2.48	1.54	1.50
2	C	1651	SPQ	P2-O10	2.53	1.64	1.59
2	B	1551	SPQ	P2-O10	2.80	1.64	1.59
2	A	1451	SPQ	C6-C1	2.92	1.55	1.50
2	C	1651	SPQ	C6-C1	2.96	1.55	1.50
2	A	1451	SPQ	P2-O10	2.98	1.64	1.59
2	C	1651	SPQ	C3-C2	3.38	1.55	1.49
2	C	1651	SPQ	P1-O1	3.44	1.65	1.59
2	A	1451	SPQ	C3-C2	3.49	1.55	1.49

*Continued on next page...*

Continued from previous page...

Mol	Chain	Res	Type	Atoms	Z	Observed(Å)	Ideal(Å)
2	D	1751	SPQ	P1-O1	3.54	1.66	1.59
2	D	1751	SPQ	C3-C2	3.58	1.55	1.49
2	A	1451	SPQ	P1-O1	3.67	1.66	1.59
2	D	1751	SPQ	C6-C1	3.69	1.56	1.50
2	B	1551	SPQ	C3-C2	3.84	1.55	1.49
2	B	1551	SPQ	P1-O1	3.86	1.66	1.59
2	C	1651	SPQ	C2-C1	13.91	1.55	1.34
2	A	1451	SPQ	C2-C1	13.91	1.55	1.34
2	D	1751	SPQ	C2-C1	14.13	1.55	1.34
2	B	1551	SPQ	C2-C1	14.26	1.55	1.34

All (7) bond angle outliers are listed below:

Mol	Chain	Res	Type	Atoms	Z	Observed(°)	Ideal(°)
2	C	1651	SPQ	C3-C2-C1	-5.19	114.25	122.48
2	B	1551	SPQ	C3-C2-C1	-5.14	114.31	122.48
2	A	1451	SPQ	C3-C2-C1	-5.11	114.38	122.48
2	D	1751	SPQ	C3-C2-C1	-4.94	114.64	122.48
2	D	1751	SPQ	O2P-P1-O1P	2.00	118.42	110.60
2	B	1551	SPQ	O2P-P1-O1P	2.02	118.47	110.60
2	A	1451	SPQ	O2P-P1-O1P	2.03	118.52	110.60

There are no chirality outliers.

There are no torsion outliers.

There are no ring outliers.

4 monomers are involved in 5 short contacts:

Mol	Chain	Res	Type	Clashes	Symm-Clashes
2	A	1451	SPQ	1	0
2	B	1551	SPQ	1	0
2	C	1651	SPQ	1	0
2	D	1751	SPQ	2	0

## 5.7 Other polymers [i](#)

There are no such residues in this entry.



## 5.8 Polymer linkage issues

There are no chain breaks in this entry.

## 6 Fit of model and data

### 6.1 Protein, DNA and RNA chains

In the following table, the column labelled ‘#RSRZ > 2’ contains the number (and percentage) of RSRZ outliers, followed by percent RSRZ outliers for the chain as percentile scores relative to all X-ray entries and entries of similar resolution. The OWAB column contains the minimum, median, 95<sup>th</sup> percentile and maximum values of the occupancy-weighted average B-factor per residue. The column labelled ‘Q < 0.9’ lists the number of (and percentage) of residues with an average occupancy less than 0.9.

Mol	Chain	Analysed	<RSRZ>	#RSRZ>2	OWAB(Å <sup>2</sup> )	Q<0.9
1	A	427/427 (100%)	-0.26	8 (1%) 66 65	7, 15, 25, 49	0
1	B	427/427 (100%)	-0.24	8 (1%) 66 65	6, 14, 26, 53	0
1	C	427/427 (100%)	-0.19	10 (2%) 60 58	7, 18, 32, 54	0
1	D	427/427 (100%)	-0.14	11 (2%) 56 53	10, 19, 32, 55	0
All	All	1708/1708 (100%)	-0.21	37 (2%) 62 59	6, 17, 31, 55	0

All (37) RSRZ outliers are listed below:

Mol	Chain	Res	Type	RSRZ
1	B	284	VAL	6.0
1	A	284	VAL	5.7
1	C	284	VAL	5.1
1	D	426	HIS	4.4
1	B	426	HIS	4.2
1	B	283	PRO	4.1
1	B	427	GLY	3.8
1	D	284	VAL	3.7
1	B	285	ALA	3.7
1	A	426	HIS	3.7
1	A	427	GLY	3.5
1	C	427	GLY	3.5
1	A	304	GLY	3.5
1	C	426	HIS	3.3
1	D	304	GLY	3.3
1	D	83	GLN	3.2
1	C	283	PRO	2.9
1	D	427	GLY	2.8
1	C	356	ALA	2.6
1	C	83	GLN	2.6
1	A	283	PRO	2.6

*Continued on next page...*

*Continued from previous page...*

Mol	Chain	Res	Type	RSRZ
1	C	304	GLY	2.5
1	D	355	GLY	2.5
1	A	356	ALA	2.5
1	D	283	PRO	2.5
1	D	75	GLY	2.4
1	A	355	GLY	2.4
1	A	75	GLY	2.3
1	B	304	GLY	2.3
1	C	399	ASP	2.3
1	C	285	ALA	2.2
1	D	399	ASP	2.2
1	B	369	GLY	2.2
1	B	233	ILE	2.2
1	D	370	LYS	2.1
1	C	8	ARG	2.1
1	D	285	ALA	2.0

## 6.2 Non-standard residues in protein, DNA, RNA chains [i](#)

There are no non-standard protein/DNA/RNA residues in this entry.

## 6.3 Carbohydrates [i](#)

There are no carbohydrates in this entry.

## 6.4 Ligands [i](#)

In the following table, the Atoms column lists the number of modelled atoms in the group and the number defined in the chemical component dictionary. The B-factors column lists the minimum, median, 95<sup>th</sup> percentile and maximum values of B factors of atoms in the group. The column labelled 'Q< 0.9' lists the number of atoms with occupancy less than 0.9.

Mol	Type	Chain	Res	Atoms	RSCC	RSR	B-factors( $\text{\AA}^2$ )	Q<0.9
2	SPQ	D	1751	27/27	0.93	0.19	17,20,28,30	0
2	SPQ	A	1451	27/27	0.93	0.19	11,18,24,25	0
2	SPQ	B	1551	27/27	0.94	0.17	11,14,23,23	0
2	SPQ	C	1651	27/27	0.95	0.17	12,18,26,26	0

## 6.5 Other polymers [i](#)

There are no such residues in this entry.