



Full wwPDB X-ray Structure Validation Report ⓘ

Nov 27, 2024 – 12:19 pm GMT

PDB ID : 8RFA
Title : Arginase 2 in complex with an inhibitor
Authors : Petersen, J.
Deposited on : 2023-12-12
Resolution : 1.76 Å(reported)

This is a Full wwPDB X-ray Structure Validation Report for a publicly released PDB entry.

We welcome your comments at validation@mail.wwpdb.org

A user guide is available at

<https://www.wwpdb.org/validation/2017/XrayValidationReportHelp>

with specific help available everywhere you see the ⓘ symbol.

The types of validation reports are described at

<http://www.wwpdb.org/validation/2017/FAQs#types>.

The following versions of software and data (see [references ⓘ](#)) were used in the production of this report:

MolProbity : 4.02b-467
Mogul : 1.8.4, CSD as541be (2020)
Xtriage (Phenix) : 1.13
EDS : 3.0
buster-report : 1.1.7 (2018)
Percentile statistics : 20231227.v01 (using entries in the PDB archive December 27th 2023)
CCP4 : 9.0.003 (Gargrove)
Density-Fitness : 1.0.11
Ideal geometry (proteins) : Engh & Huber (2001)
Ideal geometry (DNA, RNA) : Parkinson et al. (1996)
Validation Pipeline (wwPDB-VP) : 2.40

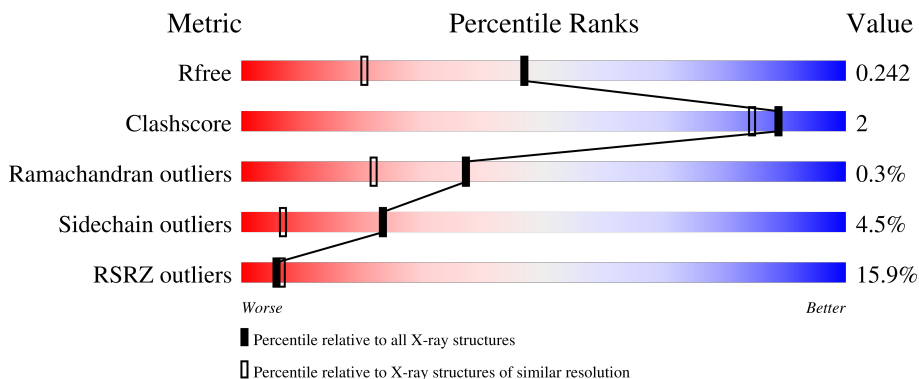
1 Overall quality at a glance

The following experimental techniques were used to determine the structure:

X-RAY DIFFRACTION

The reported resolution of this entry is 1.76 Å.

Percentile scores (ranging between 0-100) for global validation metrics of the entry are shown in the following graphic. The table shows the number of entries on which the scores are based.



Metric	Whole archive (#Entries)	Similar resolution (#Entries, resolution range(Å))
R_{free}	164625	2888 (1.76-1.76)
Clashscore	180529	3097 (1.76-1.76)
Ramachandran outliers	177936	3072 (1.76-1.76)
Sidechain outliers	177891	3072 (1.76-1.76)
RSRZ outliers	164620	2887 (1.76-1.76)

The table below summarises the geometric issues observed across the polymeric chains and their fit to the electron density. The red, orange, yellow and green segments of the lower bar indicate the fraction of residues that contain outliers for ≥ 3 , 2, 1 and 0 types of geometric quality criteria respectively. A grey segment represents the fraction of residues that are not modelled. The numeric value for each fraction is indicated below the corresponding segment, with a dot representing fractions $\leq 5\%$. The upper red bar (where present) indicates the fraction of residues that have poor fit to the electron density. The numeric value is given above the bar.

Mol	Chain	Length	Quality of chain
1	A	336	 6% 88% 5% • 5%
1	B	336	 36% 79% 8% • 12%
1	C	336	 3% 88% 6% 5%

2 Entry composition [i](#)

There are 4 unique types of molecules in this entry. The entry contains 7548 atoms, of which 0 are hydrogens and 0 are deuteriums.

In the tables below, the ZeroOcc column contains the number of atoms modelled with zero occupancy, the AltConf column contains the number of residues with at least one atom in alternate conformation and the Trace column contains the number of residues modelled with at most 2 atoms.

- Molecule 1 is a protein called Arginase-2, mitochondrial.

Mol	Chain	Residues	Atoms					ZeroOcc	AltConf	Trace
			Total	C	N	O	S			
1	A	318	2430	1536	422	463	9	0	0	0
1	B	296	2263	1434	389	431	9	0	0	0
1	C	318	2430	1536	422	463	9	0	0	0

There are 48 discrepancies between the modelled and reference sequences:

Chain	Residue	Modelled	Actual	Comment	Reference
A	6	MET	-	initiating methionine	UNP P78540
A	7	HIS	-	expression tag	UNP P78540
A	8	HIS	-	expression tag	UNP P78540
A	9	HIS	-	expression tag	UNP P78540
A	10	HIS	-	expression tag	UNP P78540
A	11	HIS	-	expression tag	UNP P78540
A	12	HIS	-	expression tag	UNP P78540
A	13	GLY	-	expression tag	UNP P78540
A	14	GLY	-	expression tag	UNP P78540
A	15	GLY	-	expression tag	UNP P78540
A	16	GLU	-	expression tag	UNP P78540
A	17	ASN	-	expression tag	UNP P78540
A	18	LEU	-	expression tag	UNP P78540
A	19	TYR	-	expression tag	UNP P78540
A	20	PHE	-	expression tag	UNP P78540
A	21	GLN	-	expression tag	UNP P78540
B	6	MET	-	initiating methionine	UNP P78540
B	7	HIS	-	expression tag	UNP P78540
B	8	HIS	-	expression tag	UNP P78540
B	9	HIS	-	expression tag	UNP P78540
B	10	HIS	-	expression tag	UNP P78540
B	11	HIS	-	expression tag	UNP P78540
B	12	HIS	-	expression tag	UNP P78540

Continued on next page...

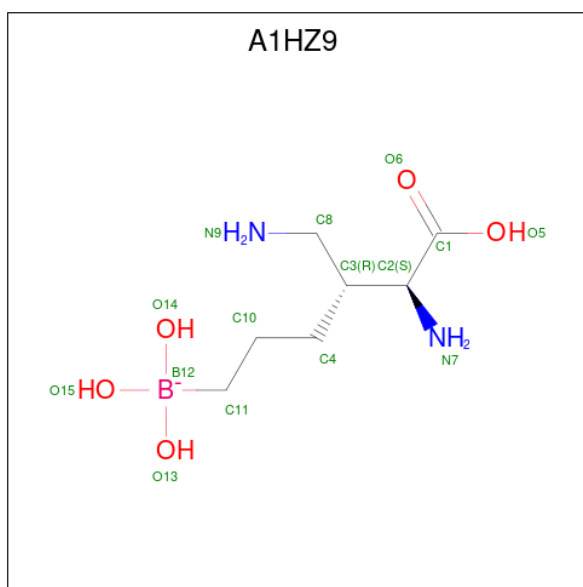
Continued from previous page...

Chain	Residue	Modelled	Actual	Comment	Reference
B	13	GLY	-	expression tag	UNP P78540
B	14	GLY	-	expression tag	UNP P78540
B	15	GLY	-	expression tag	UNP P78540
B	16	GLU	-	expression tag	UNP P78540
B	17	ASN	-	expression tag	UNP P78540
B	18	LEU	-	expression tag	UNP P78540
B	19	TYR	-	expression tag	UNP P78540
B	20	PHE	-	expression tag	UNP P78540
B	21	GLN	-	expression tag	UNP P78540
C	6	MET	-	initiating methionine	UNP P78540
C	7	HIS	-	expression tag	UNP P78540
C	8	HIS	-	expression tag	UNP P78540
C	9	HIS	-	expression tag	UNP P78540
C	10	HIS	-	expression tag	UNP P78540
C	11	HIS	-	expression tag	UNP P78540
C	12	HIS	-	expression tag	UNP P78540
C	13	GLY	-	expression tag	UNP P78540
C	14	GLY	-	expression tag	UNP P78540
C	15	GLY	-	expression tag	UNP P78540
C	16	GLU	-	expression tag	UNP P78540
C	17	ASN	-	expression tag	UNP P78540
C	18	LEU	-	expression tag	UNP P78540
C	19	TYR	-	expression tag	UNP P78540
C	20	PHE	-	expression tag	UNP P78540
C	21	GLN	-	expression tag	UNP P78540

- Molecule 2 is MANGANESE (II) ION (three-letter code: MN) (formula: Mn).

Mol	Chain	Residues	Atoms	ZeroOcc	AltConf
2	A	2	Total Mn 2 2	0	0
2	B	2	Total Mn 2 2	0	0
2	C	2	Total Mn 2 2	0	0

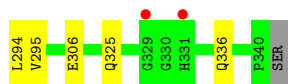
- Molecule 3 is [(4 {R},5 {S})-4-(aminomethyl)-5-azanyl-6-oxidanyl-6-oxidanylidene-hexyl]-tris(oxidanyl)boron (three-letter code: A1HZ9) (formula: C₇H₁₈BN₂O₅) (labeled as "Ligand of Interest" by depositor).



Mol	Chain	Residues	Atoms					ZeroOcc	AltConf
			Total	B	C	N	O		
3	A	1	15	1	7	2	5	0	0

- Molecule 4 is water.

Mol	Chain	Residues	Atoms		ZeroOcc	AltConf
4	A	143	Total	O	0	0
			143	143		
4	B	87	Total	O	0	0
			87	87		
4	C	174	Total	O	0	0
			174	174		



4 Data and refinement statistics

Property	Value	Source
Space group	P 21 21 21	Depositor
Cell constants a, b, c, α , β , γ	46.66Å 134.87Å 144.30Å 90.00° 90.00° 90.00°	Depositor
Resolution (Å)	44.40 – 1.76 44.40 – 1.76	Depositor EDS
% Data completeness (in resolution range)	99.9 (44.40-1.76) 99.9 (44.40-1.76)	Depositor EDS
R_{merge}	0.05	Depositor
R_{sym}	(Not available)	Depositor
$\langle I/\sigma(I) \rangle$ ¹	1.83 (at 1.76Å)	Xtrriage
Refinement program	BUSTER 2.11.7 PACIOREK	Depositor
R, R_{free}	0.222 , 0.252 0.211 , 0.242	Depositor DCC
R_{free} test set	4377 reflections (4.80%)	wwPDB-VP
Wilson B-factor (Å ²)	31.8	Xtrriage
Anisotropy	0.641	Xtrriage
Bulk solvent k_{sol} (e/Å ³), B_{sol} (Å ²)	0.34 , 36.0	EDS
L-test for twinning ²	$\langle L \rangle = 0.49$, $\langle L^2 \rangle = 0.32$	Xtrriage
Estimated twinning fraction	No twinning to report.	Xtrriage
F_o, F_c correlation	0.96	EDS
Total number of atoms	7548	wwPDB-VP
Average B, all atoms (Å ²)	44.0	wwPDB-VP

Xtrriage's analysis on translational NCS is as follows: *The largest off-origin peak in the Patterson function is 4.05% of the height of the origin peak. No significant pseudotranslation is detected.*

¹Intensities estimated from amplitudes.

²Theoretical values of $\langle |L| \rangle$, $\langle L^2 \rangle$ for acentric reflections are 0.5, 0.333 respectively for untwinned datasets, and 0.375, 0.2 for perfectly twinned datasets.

5 Model quality [i](#)

5.1 Standard geometry [i](#)

Bond lengths and bond angles in the following residue types are not validated in this section: MN, A1HZ9

The Z score for a bond length (or angle) is the number of standard deviations the observed value is removed from the expected value. A bond length (or angle) with $|Z| > 5$ is considered an outlier worth inspection. RMSZ is the root-mean-square of all Z scores of the bond lengths (or angles).

Mol	Chain	Bond lengths		Bond angles	
		RMSZ	# Z >5	RMSZ	# Z >5
1	A	0.49	0/2484	0.63	0/3382
1	B	0.48	0/2308	0.64	0/3133
1	C	0.51	0/2484	0.65	0/3382
All	All	0.50	0/7276	0.64	0/9897

Chiral center outliers are detected by calculating the chiral volume of a chiral center and verifying if the center is modelled as a planar moiety or with the opposite hand. A planarity outlier is detected by checking planarity of atoms in a peptide group, atoms in a mainchain group or atoms of a sidechain that are expected to be planar.

Mol	Chain	#Chirality outliers	#Planarity outliers
1	B	0	1

There are no bond length outliers.

There are no bond angle outliers.

There are no chirality outliers.

All (1) planarity outliers are listed below:

Mol	Chain	Res	Type	Group
1	B	132	ARG	Mainchain

5.2 Too-close contacts [i](#)

In the following table, the Non-H and H(model) columns list the number of non-hydrogen atoms and hydrogen atoms in the chain respectively. The H(added) column lists the number of hydrogen atoms added and optimized by MolProbity. The Clashes column lists the number of clashes within the asymmetric unit, whereas Symm-Clashes lists symmetry-related clashes.

Mol	Chain	Non-H	H(model)	H(added)	Clashes	Symm-Clashes
1	A	2430	0	2410	8	0
1	B	2263	0	2225	10	0
1	C	2430	0	2410	7	0
2	A	2	0	0	0	0
2	B	2	0	0	0	0
2	C	2	0	0	0	0
3	A	15	0	0	0	0
4	A	143	0	0	0	0
4	B	87	0	0	0	0
4	C	174	0	0	1	0
All	All	7548	0	7045	25	0

The all-atom clashscore is defined as the number of clashes found per 1000 atoms (including hydrogen atoms). The all-atom clashscore for this structure is 2.

All (25) close contacts within the same asymmetric unit are listed below, sorted by their clash magnitude.

Atom-1	Atom-2	Interatomic distance (Å)	Clash overlap (Å)
1:B:289:LEU:HD21	1:B:292:LEU:HD12	1.70	0.73
1:C:57:ARG:HH21	1:C:325:GLN:HE22	1.35	0.71
1:A:57:ARG:HH21	1:A:325:GLN:HE22	1.42	0.67
1:B:41:GLY:HA3	1:B:300:GLN:HB2	1.78	0.64
1:B:57:ARG:HH21	1:B:325:GLN:HE22	1.54	0.55
1:C:199:ARG:HD3	1:C:219:MET:HG3	1.91	0.53
1:A:108:SER:HB3	1:A:133:HIS:CE1	2.48	0.48
1:C:120:HIS:CG	1:C:295:VAL:HG21	2.50	0.47
1:A:137:LEU:C	1:A:137:LEU:HD12	2.35	0.46
1:A:151:PRO:HD2	1:A:176:PRO:HD2	1.96	0.46
1:A:33:PHE:CZ	1:A:35:GLN:HB2	2.49	0.46
1:B:169:ARG:HG2	1:B:186:PRO:HB2	1.96	0.46
1:A:57:ARG:NH2	1:A:325:GLN:HE22	2.12	0.45
1:C:29:ILE:HD12	1:C:113:CYS:SG	2.57	0.45
1:B:120:HIS:CG	1:B:295:VAL:HG21	2.53	0.44
1:B:248:LEU:HD23	1:B:292:LEU:HD11	2.01	0.42
1:C:243:GLN:HG2	4:C:771:HOH:O	2.18	0.42
1:A:326:THR:HG23	1:A:328:GLU:H	1.83	0.42
1:B:162:GLN:N	1:B:163:PRO:CD	2.82	0.42
1:A:162:GLN:N	1:A:163:PRO:CD	2.83	0.42
1:B:143:ASP:HB3	1:B:145:HIS:O	2.20	0.41
1:B:24:HIS:NE2	1:B:284:HIS:HE1	2.19	0.41
1:C:120:HIS:CD2	1:C:295:VAL:HG21	2.55	0.41
1:B:162:GLN:N	1:B:163:PRO:HD2	2.36	0.41

Continued on next page...

Continued from previous page...

Atom-1	Atom-2	Interatomic distance (Å)	Clash overlap (Å)
1:C:162:GLN:N	1:C:163:PRO:CD	2.84	0.40

There are no symmetry-related clashes.

5.3 Torsion angles [i](#)

5.3.1 Protein backbone [i](#)

In the following table, the Percentiles column shows the percent Ramachandran outliers of the chain as a percentile score with respect to all X-ray entries followed by that with respect to entries of similar resolution.

The Analysed column shows the number of residues for which the backbone conformation was analysed, and the total number of residues.

Mol	Chain	Analysed	Favoured	Allowed	Outliers	Percentiles	
1	A	316/336 (94%)	310 (98%)	5 (2%)	1 (0%)	37	22
1	B	283/336 (84%)	274 (97%)	8 (3%)	1 (0%)	30	16
1	C	316/336 (94%)	311 (98%)	4 (1%)	1 (0%)	37	22
All	All	915/1008 (91%)	895 (98%)	17 (2%)	3 (0%)	37	22

All (3) Ramachandran outliers are listed below:

Mol	Chain	Res	Type
1	A	162	GLN
1	B	162	GLN
1	C	162	GLN

5.3.2 Protein sidechains [i](#)

In the following table, the Percentiles column shows the percent sidechain outliers of the chain as a percentile score with respect to all X-ray entries followed by that with respect to entries of similar resolution.

The Analysed column shows the number of residues for which the sidechain conformation was analysed, and the total number of residues.

Mol	Chain	Analysed	Rotameric	Outliers	Percentiles	
1	A	268/283 (95%)	257 (96%)	11 (4%)	26	8

Continued on next page...

Continued from previous page...

Mol	Chain	Analysed	Rotameric	Outliers	Percentiles	
1	B	247/283 (87%)	234 (95%)	13 (5%)	19	4
1	C	268/283 (95%)	257 (96%)	11 (4%)	26	8
All	All	783/849 (92%)	748 (96%)	35 (4%)	23	7

All (35) residues with a non-rotameric sidechain are listed below:

Mol	Chain	Res	Type
1	A	35	GLN
1	A	80	ASP
1	A	120	HIS
1	A	137	LEU
1	A	160	HIS
1	A	177	GLN
1	A	236	ASP
1	A	294	LEU
1	A	326	THR
1	A	327	ARG
1	A	331	HIS
1	B	81	LEU
1	B	94	LEU
1	B	98	GLU
1	B	105	ARG
1	B	160	HIS
1	B	168	LEU
1	B	177	GLN
1	B	178	LEU
1	B	188	ILE
1	B	265	THR
1	B	292	LEU
1	B	294	LEU
1	B	327	ARG
1	C	33	PHE
1	C	61	LEU
1	C	81	LEU
1	C	105	ARG
1	C	160	HIS
1	C	168	LEU
1	C	177	GLN
1	C	213	ASP
1	C	294	LEU
1	C	306	GLU

Continued on next page...

Continued from previous page...

Mol	Chain	Res	Type
1	C	336	GLN

Sometimes sidechains can be flipped to improve hydrogen bonding and reduce clashes. All (10) such sidechains are listed below:

Mol	Chain	Res	Type
1	A	228	GLN
1	A	325	GLN
1	B	44	HIS
1	B	228	GLN
1	B	284	HIS
1	B	300	GLN
1	B	325	GLN
1	C	228	GLN
1	C	284	HIS
1	C	325	GLN

5.3.3 RNA [i](#)

There are no RNA molecules in this entry.

5.4 Non-standard residues in protein, DNA, RNA chains [i](#)

There are no non-standard protein/DNA/RNA residues in this entry.

5.5 Carbohydrates [i](#)

There are no oligosaccharides in this entry.

5.6 Ligand geometry [i](#)

Of 7 ligands modelled in this entry, 6 are monoatomic - leaving 1 for Mogul analysis.

In the following table, the Counts columns list the number of bonds (or angles) for which Mogul statistics could be retrieved, the number of bonds (or angles) that are observed in the model and the number of bonds (or angles) that are defined in the Chemical Component Dictionary. The Link column lists molecule types, if any, to which the group is linked. The Z score for a bond length (or angle) is the number of standard deviations the observed value is removed from the expected value. A bond length (or angle) with $|Z| > 2$ is considered an outlier worth inspection. RMSZ is the root-mean-square of all Z scores of the bond lengths (or angles).

Mol	Type	Chain	Res	Link	Bond lengths			Bond angles		
					Counts	RMSZ	# Z > 2	Counts	RMSZ	# Z > 2
3	A1HZ9	A	403	2	10,14,14	0.99	0	13,19,19	0.79	0

In the following table, the Chirals column lists the number of chiral outliers, the number of chiral centers analysed, the number of these observed in the model and the number defined in the Chemical Component Dictionary. Similar counts are reported in the Torsion and Rings columns. '-' means no outliers of that kind were identified.

Mol	Type	Chain	Res	Link	Chirals	Torsions	Rings
3	A1HZ9	A	403	2	-	1/14/17/17	-

There are no bond length outliers.

There are no bond angle outliers.

There are no chirality outliers.

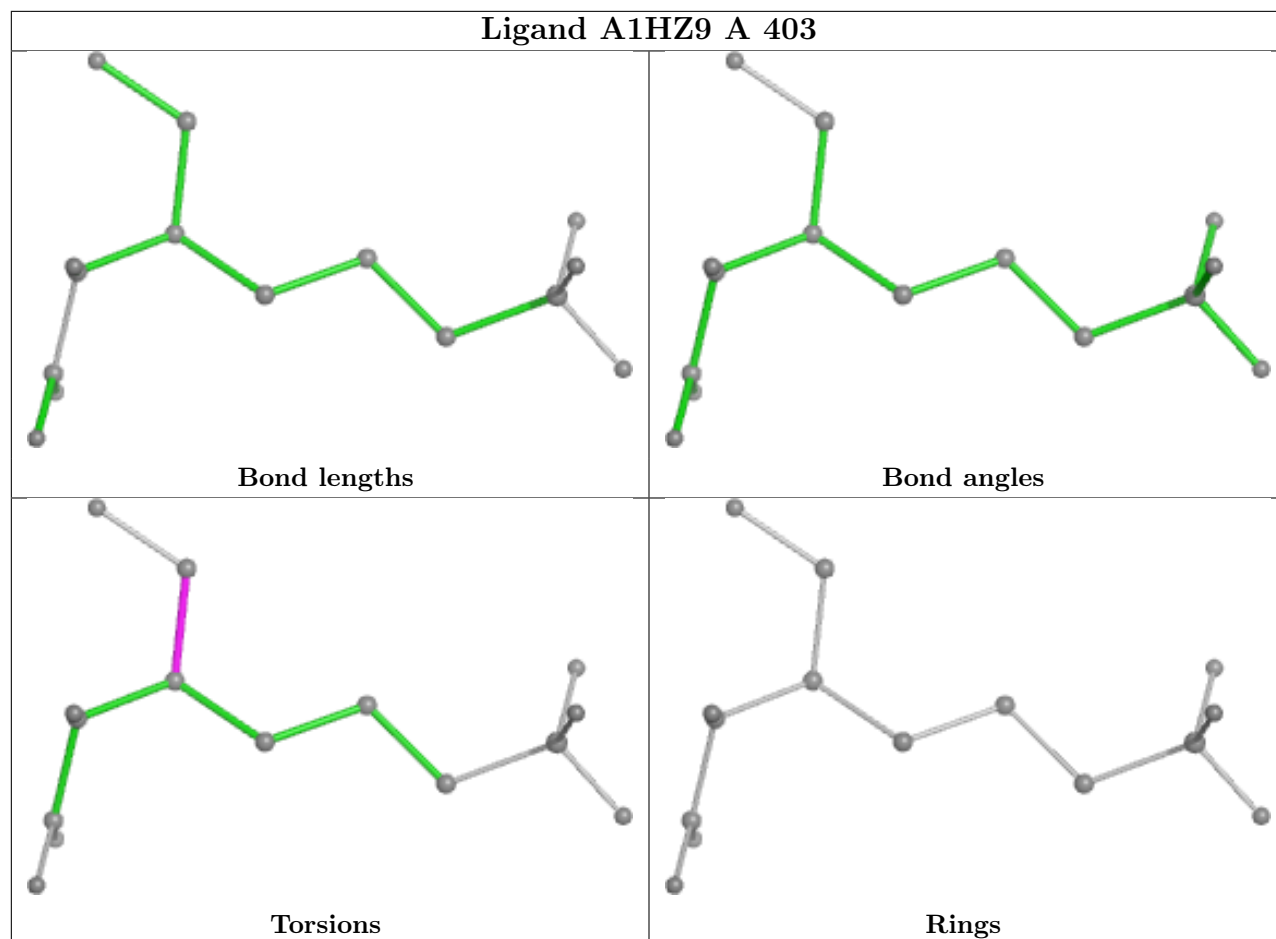
All (1) torsion outliers are listed below:

Mol	Chain	Res	Type	Atoms
3	A	403	A1HZ9	C2-C3-C8-N9

There are no ring outliers.

No monomer is involved in short contacts.

The following is a two-dimensional graphical depiction of Mogul quality analysis of bond lengths, bond angles, torsion angles, and ring geometry for all instances of the Ligand of Interest. In addition, ligands with molecular weight > 250 and outliers as shown on the validation Tables will also be included. For torsion angles, if less than 5% of the Mogul distribution of torsion angles is within 10 degrees of the torsion angle in question, then that torsion angle is considered an outlier. Any bond that is central to one or more torsion angles identified as an outlier by Mogul will be highlighted in the graph. For rings, the root-mean-square deviation (RMSD) between the ring in question and similar rings identified by Mogul is calculated over all ring torsion angles. If the average RMSD is greater than 60 degrees and the minimal RMSD between the ring in question and any Mogul-identified rings is also greater than 60 degrees, then that ring is considered an outlier. The outliers are highlighted in purple. The color gray indicates Mogul did not find sufficient equivalents in the CSD to analyse the geometry.



5.7 Other polymers [\(i\)](#)

There are no such residues in this entry.

5.8 Polymer linkage issues [\(i\)](#)

There are no chain breaks in this entry.

6 Fit of model and data

6.1 Protein, DNA and RNA chains

In the following table, the column labelled ‘#RSRZ > 2’ contains the number (and percentage) of RSRZ outliers, followed by percent RSRZ outliers for the chain as percentile scores relative to all X-ray entries and entries of similar resolution. The OWAB column contains the minimum, median, 95th percentile and maximum values of the occupancy-weighted average B-factor per residue. The column labelled ‘Q < 0.9’ lists the number of (and percentage) of residues with an average occupancy less than 0.9.

Mol	Chain	Analysed	<RSRZ>	#RSRZ>2	OWAB(Å ²)	Q<0.9
1	A	318/336 (94%)	0.43	19 (5%) 29 32	23, 34, 68, 129	0
1	B	296/336 (88%)	1.83	120 (40%) 1 1	27, 51, 97, 157	0
1	C	318/336 (94%)	0.35	9 (2%) 55 61	22, 33, 60, 86	0
All	All	932/1008 (92%)	0.85	148 (15%) 6 7	22, 38, 78, 157	0

All (148) RSRZ outliers are listed below:

Mol	Chain	Res	Type	RSRZ
1	C	33	PHE	6.7
1	A	337	LEU	6.5
1	B	71	LEU	6.1
1	B	81	LEU	6.0
1	A	338	PRO	5.9
1	A	339	THR	5.8
1	B	166	PHE	5.7
1	B	92	VAL	5.7
1	B	33	PHE	5.5
1	B	171	LEU	5.1
1	B	175	VAL	4.9
1	B	168	LEU	4.8
1	B	184	ILE	4.8
1	B	167	LEU	4.8
1	A	334	TYR	4.7
1	B	207	PHE	4.5
1	B	188	ILE	4.4
1	B	183	TRP	4.4
1	B	29	ILE	4.4
1	B	94	LEU	4.3
1	A	332	ILE	4.2
1	B	118	GLY	4.2
1	B	178	LEU	4.2

Continued on next page...

Continued from previous page...

Mol	Chain	Res	Type	RSRZ
1	B	95	ALA	4.1
1	B	82	TYR	4.1
1	B	125	GLY	4.0
1	A	77	PRO	4.0
1	B	119	ASP	4.0
1	B	187	CYS	3.9
1	B	181	PHE	3.9
1	A	333	VAL	3.9
1	B	297	VAL	3.8
1	B	113	CYS	3.8
1	B	137	LEU	3.8
1	B	164	VAL	3.7
1	B	111	TYR	3.7
1	B	148	ILE	3.7
1	B	99	LEU	3.6
1	B	153	THR	3.6
1	B	245	PRO	3.6
1	B	134	CYS	3.5
1	B	138	CYS	3.5
1	B	46	PRO	3.5
1	B	294	LEU	3.4
1	B	212	TYR	3.4
1	B	83	ASN	3.4
1	B	103	VAL	3.4
1	A	340	PRO	3.4
1	B	124	ILE	3.4
1	B	127	ILE	3.4
1	B	98	GLU	3.3
1	A	23	VAL	3.3
1	B	65	LEU	3.3
1	B	155	SER	3.3
1	B	68	PHE	3.2
1	B	292	LEU	3.2
1	B	31	ALA	3.2
1	A	80	ASP	3.2
1	B	105	ARG	3.2
1	B	102	VAL	3.1
1	B	107	VAL	3.1
1	B	122	LEU	3.1
1	B	154	THR	3.1
1	B	239	ILE	3.0
1	B	194	VAL	3.0

Continued on next page...

Continued from previous page...

Mol	Chain	Res	Type	RSRZ
1	C	331	HIS	3.0
1	C	84	ASN	2.9
1	B	329	GLY	2.9
1	C	85	LEU	2.9
1	B	204	PRO	2.9
1	B	246	ILE	2.9
1	B	130	HIS	2.8
1	B	331	HIS	2.8
1	C	82	TYR	2.8
1	B	165	SER	2.8
1	B	209	LEU	2.8
1	A	64	HIS	2.7
1	B	340	PRO	2.7
1	B	93	GLY	2.7
1	B	117	GLY	2.7
1	B	129	GLY	2.7
1	B	238	LEU	2.7
1	B	179	PRO	2.7
1	A	76	VAL	2.7
1	B	185	LYS	2.7
1	B	116	LEU	2.6
1	B	176	PRO	2.6
1	B	262	ALA	2.6
1	A	331	HIS	2.6
1	B	26	VAL	2.6
1	B	160	HIS	2.6
1	B	174	LYS	2.5
1	B	326	THR	2.5
1	B	123	ALA	2.5
1	B	308	ALA	2.5
1	C	81	LEU	2.5
1	B	128	SER	2.5
1	A	74	THR	2.5
1	A	73	PHE	2.4
1	B	180	GLY	2.4
1	B	214	ILE	2.4
1	B	135	PRO	2.4
1	B	42	VAL	2.4
1	B	44	HIS	2.4
1	B	146	ALA	2.4
1	B	208	ILE	2.4
1	B	267	VAL	2.4

Continued on next page...

Continued from previous page...

Mol	Chain	Res	Type	RSRZ
1	B	101	GLU	2.4
1	B	332	ILE	2.3
1	B	140	VAL	2.3
1	B	100	ALA	2.3
1	B	301	LEU	2.3
1	C	76	VAL	2.3
1	C	188	ILE	2.2
1	B	131	ALA	2.2
1	B	191	ALA	2.2
1	B	54	LEU	2.2
1	B	173	ASP	2.2
1	B	288	LEU	2.2
1	B	163	PRO	2.2
1	B	27	ALA	2.2
1	B	169	ARG	2.2
1	B	333	VAL	2.2
1	B	89	PRO	2.2
1	B	335	ASP	2.2
1	B	339	THR	2.2
1	B	289	LEU	2.2
1	B	110	GLY	2.2
1	A	336	GLN	2.1
1	B	69	GLY	2.1
1	A	78	LYS	2.1
1	B	190	SER	2.1
1	B	55	MET	2.1
1	C	329	GLY	2.1
1	A	108	SER	2.1
1	B	295	VAL	2.1
1	B	47	ALA	2.1
1	A	75	PRO	2.1
1	B	291	ALA	2.0
1	B	126	THR	2.0
1	B	234	THR	2.0
1	B	193	ILE	2.0
1	B	241	LYS	2.0
1	B	45	GLY	2.0
1	B	248	LEU	2.0
1	B	28	VAL	2.0
1	B	30	GLY	2.0
1	B	287	GLY	2.0

6.2 Non-standard residues in protein, DNA, RNA chains [i](#)

There are no non-standard protein/DNA/RNA residues in this entry.

6.3 Carbohydrates [i](#)

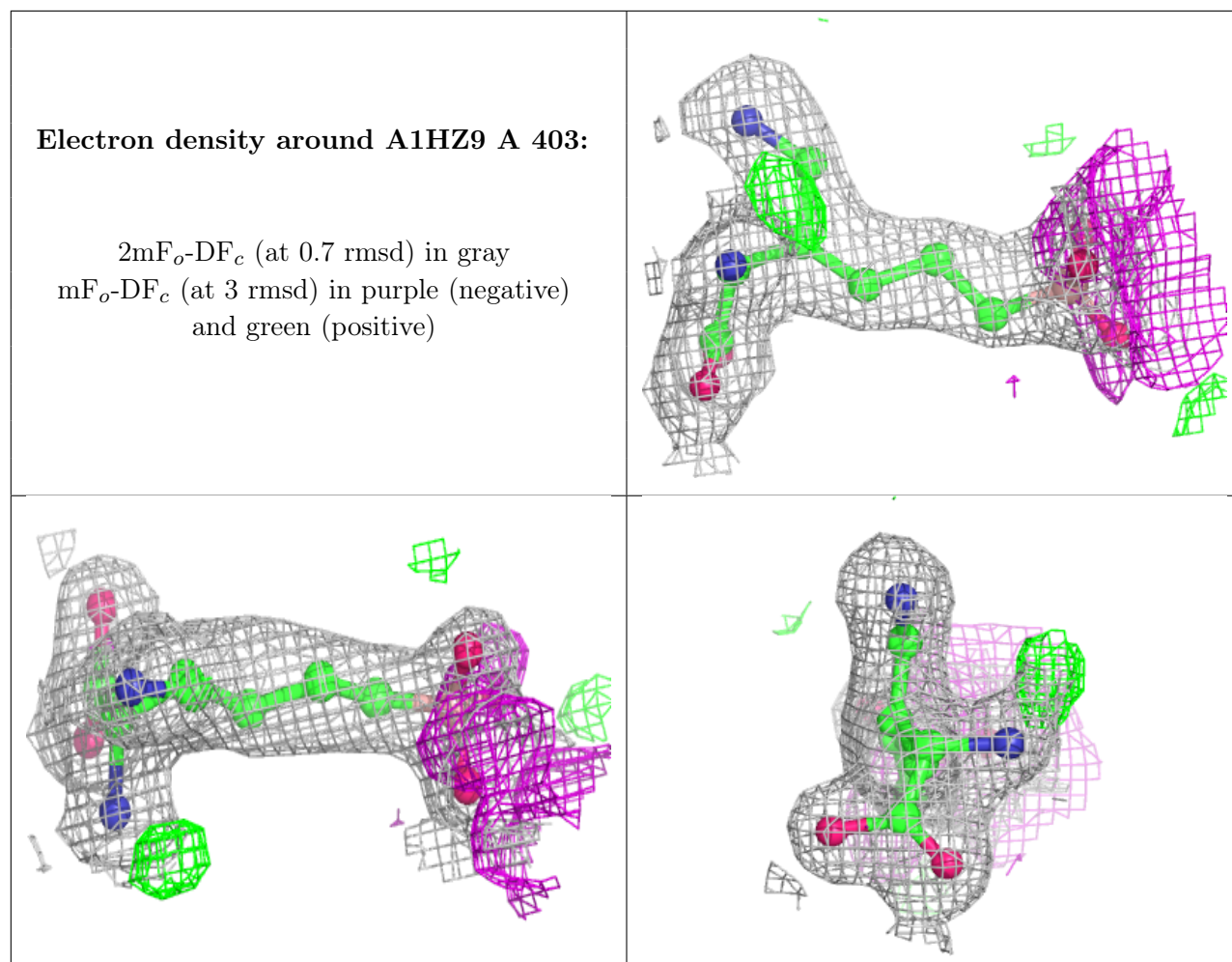
There are no monosaccharides in this entry.

6.4 Ligands [i](#)

In the following table, the Atoms column lists the number of modelled atoms in the group and the number defined in the chemical component dictionary. The B-factors column lists the minimum, median, 95th percentile and maximum values of B factors of atoms in the group. The column labelled 'Q< 0.9' lists the number of atoms with occupancy less than 0.9.

Mol	Type	Chain	Res	Atoms	RSCC	RSR	B-factors(Å ²)	Q<0.9
3	A1HZ9	A	403	15/15	0.84	0.12	34,37,47,52	0
2	MN	B	500	1/1	0.89	0.12	57,57,57,57	0
2	MN	B	501	1/1	0.96	0.13	47,47,47,47	0
2	MN	A	402	1/1	0.97	0.12	39,39,39,39	0
2	MN	C	500	1/1	0.98	0.07	33,33,33,33	0
2	MN	C	501	1/1	0.98	0.05	33,33,33,33	0
2	MN	A	401	1/1	0.98	0.16	37,37,37,37	0

The following is a graphical depiction of the model fit to experimental electron density of all instances of the Ligand of Interest. In addition, ligands with molecular weight > 250 and outliers as shown on the geometry validation Tables will also be included. Each fit is shown from different orientation to approximate a three-dimensional view.



6.5 Other polymers [i](#)

There are no such residues in this entry.