



Full wwPDB X-ray Structure Validation Report ⓘ

Nov 25, 2024 – 12:09 pm GMT

PDB ID : 8RGF
Title : Arginase 2 in complex with inhibitor
Authors : Petersen, J.
Deposited on : 2023-12-13
Resolution : 1.86 Å(reported)

This is a Full wwPDB X-ray Structure Validation Report for a publicly released PDB entry.

We welcome your comments at validation@mail.wwpdb.org

A user guide is available at

<https://www.wwpdb.org/validation/2017/XrayValidationReportHelp>

with specific help available everywhere you see the ⓘ symbol.

The types of validation reports are described at

<http://www.wwpdb.org/validation/2017/FAQs#types>.

The following versions of software and data (see [references ⓘ](#)) were used in the production of this report:

MolProbity : 4.02b-467
Mogul : 1.8.4, CSD as541be (2020)
Xtriage (Phenix) : 1.13
EDS : 3.0
buster-report : 1.1.7 (2018)
Percentile statistics : 20231227.v01 (using entries in the PDB archive December 27th 2023)
CCP4 : 9.0.003 (Gargrove)
Density-Fitness : 1.0.11
Ideal geometry (proteins) : Engh & Huber (2001)
Ideal geometry (DNA, RNA) : Parkinson et al. (1996)
Validation Pipeline (wwPDB-VP) : 2.40

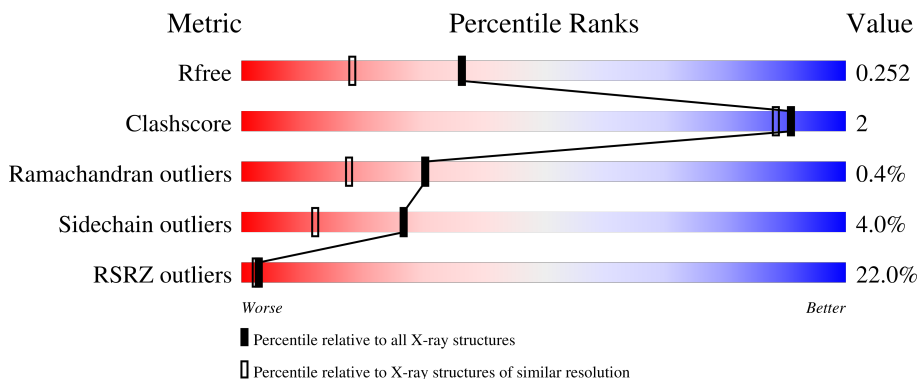
1 Overall quality at a glance

The following experimental techniques were used to determine the structure:

X-RAY DIFFRACTION

The reported resolution of this entry is 1.86 Å.

Percentile scores (ranging between 0-100) for global validation metrics of the entry are shown in the following graphic. The table shows the number of entries on which the scores are based.



Metric	Whole archive (#Entries)	Similar resolution (#Entries, resolution range(Å))
R_{free}	164625	3097 (1.86-1.86)
Clashscore	180529	3359 (1.86-1.86)
Ramachandran outliers	177936	3335 (1.86-1.86)
Sidechain outliers	177891	3335 (1.86-1.86)
RSRZ outliers	164620	3097 (1.86-1.86)

The table below summarises the geometric issues observed across the polymeric chains and their fit to the electron density. The red, orange, yellow and green segments of the lower bar indicate the fraction of residues that contain outliers for ≥ 3 , 2, 1 and 0 types of geometric quality criteria respectively. A grey segment represents the fraction of residues that are not modelled. The numeric value for each fraction is indicated below the corresponding segment, with a dot representing fractions $\leq 5\%$. The upper red bar (where present) indicates the fraction of residues that have poor fit to the electron density. The numeric value is given above the bar.

Mol	Chain	Length	Quality of chain
1	A	335	
1	B	335	
1	C	335	

2 Entry composition i

There are 4 unique types of molecules in this entry. The entry contains 7644 atoms, of which 0 are hydrogens and 0 are deuteriums.

In the tables below, the ZeroOcc column contains the number of atoms modelled with zero occupancy, the AltConf column contains the number of residues with at least one atom in alternate conformation and the Trace column contains the number of residues modelled with at most 2 atoms.

- Molecule 1 is a protein called Arginase-2, mitochondrial.

Mol	Chain	Residues	Atoms					ZeroOcc	AltConf	Trace
			Total	C	N	O	S			
1	A	318	Total 2430	C 1536	N 422	O 463	S 9	0	0	0
1	B	324	Total 2477	C 1567	N 428	O 473	S 9	0	0	0
1	C	318	Total 2430	C 1536	N 422	O 463	S 9	0	0	0

There are 45 discrepancies between the modelled and reference sequences:

Chain	Residue	Modelled	Actual	Comment	Reference
A	7	HIS	-	expression tag	UNP P78540
A	8	HIS	-	expression tag	UNP P78540
A	9	HIS	-	expression tag	UNP P78540
A	10	HIS	-	expression tag	UNP P78540
A	11	HIS	-	expression tag	UNP P78540
A	12	HIS	-	expression tag	UNP P78540
A	13	GLY	-	expression tag	UNP P78540
A	14	GLY	-	expression tag	UNP P78540
A	15	GLY	-	expression tag	UNP P78540
A	16	GLU	-	expression tag	UNP P78540
A	17	ASN	-	expression tag	UNP P78540
A	18	LEU	-	expression tag	UNP P78540
A	19	TYR	-	expression tag	UNP P78540
A	20	PHE	-	expression tag	UNP P78540
A	21	GLN	-	expression tag	UNP P78540
B	7	HIS	-	expression tag	UNP P78540
B	8	HIS	-	expression tag	UNP P78540
B	9	HIS	-	expression tag	UNP P78540
B	10	HIS	-	expression tag	UNP P78540
B	11	HIS	-	expression tag	UNP P78540
B	12	HIS	-	expression tag	UNP P78540
B	13	GLY	-	expression tag	UNP P78540
B	14	GLY	-	expression tag	UNP P78540

Continued on next page...

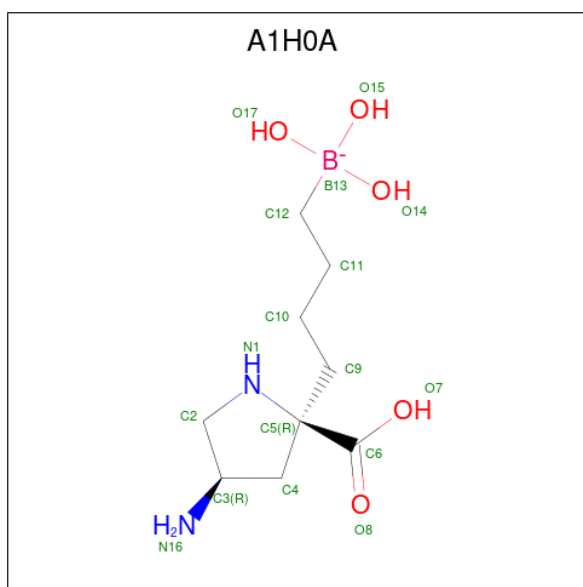
Continued from previous page...

Chain	Residue	Modelled	Actual	Comment	Reference
B	15	GLY	-	expression tag	UNP P78540
B	16	GLU	-	expression tag	UNP P78540
B	17	ASN	-	expression tag	UNP P78540
B	18	LEU	-	expression tag	UNP P78540
B	19	TYR	-	expression tag	UNP P78540
B	20	PHE	-	expression tag	UNP P78540
B	21	GLN	-	expression tag	UNP P78540
C	7	HIS	-	expression tag	UNP P78540
C	8	HIS	-	expression tag	UNP P78540
C	9	HIS	-	expression tag	UNP P78540
C	10	HIS	-	expression tag	UNP P78540
C	11	HIS	-	expression tag	UNP P78540
C	12	HIS	-	expression tag	UNP P78540
C	13	GLY	-	expression tag	UNP P78540
C	14	GLY	-	expression tag	UNP P78540
C	15	GLY	-	expression tag	UNP P78540
C	16	GLU	-	expression tag	UNP P78540
C	17	ASN	-	expression tag	UNP P78540
C	18	LEU	-	expression tag	UNP P78540
C	19	TYR	-	expression tag	UNP P78540
C	20	PHE	-	expression tag	UNP P78540
C	21	GLN	-	expression tag	UNP P78540

- Molecule 2 is MANGANESE (II) ION (three-letter code: MN) (formula: Mn).

Mol	Chain	Residues	Atoms	ZeroOcc	AltConf
2	A	2	Total Mn 2 2	0	0
2	B	2	Total Mn 2 2	0	0
2	C	2	Total Mn 2 2	0	0

- Molecule 3 is 4-[(2 {R},4 {R})-4-azanyl-2-carboxy-pyrrolidin-2-yl]butyl-tris(oxidanyl)bora nuide (three-letter code: A1H0A) (formula: C₉H₂₀BN₂O₅) (labeled as "Ligand of Interest" by depositor).



Mol	Chain	Residues	Atoms				ZeroOcc	AltConf	
			Total	B	C	N			O
3	A	1	17	1	9	2	5	0	0
3	C	1	17	1	9	2	5	0	0

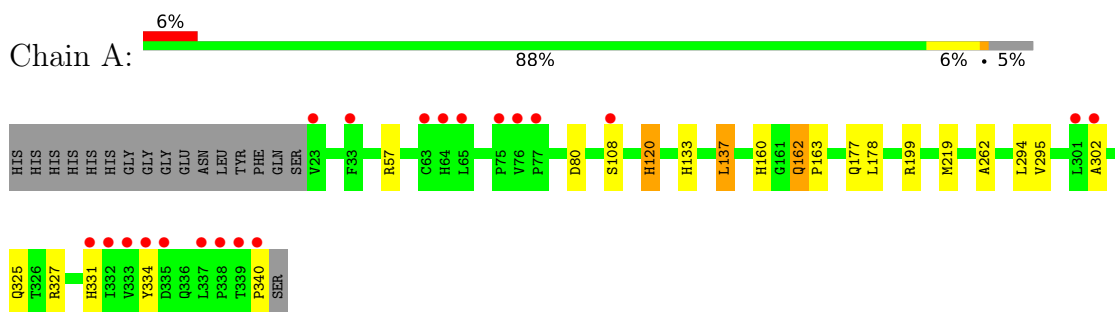
- Molecule 4 is water.

Mol	Chain	Residues	Atoms		ZeroOcc	AltConf
			Total	O		
4	A	101	101	101	0	0
4	B	52	52	52	0	0
4	C	114	114	114	0	0

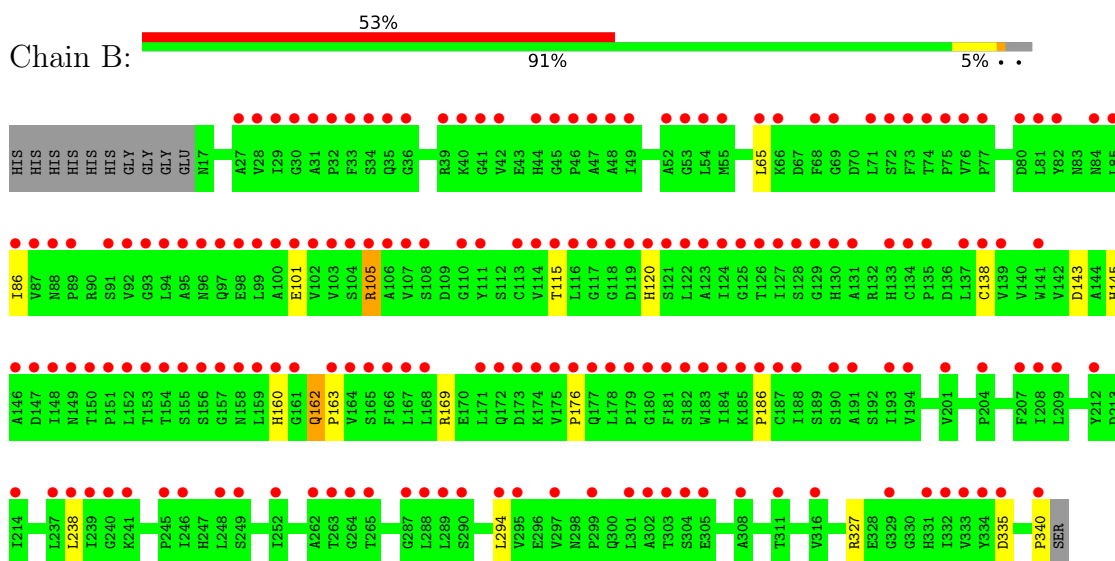
3 Residue-property plots [i](#)

These plots are drawn for all protein, RNA, DNA and oligosaccharide chains in the entry. The first graphic for a chain summarises the proportions of the various outlier classes displayed in the second graphic. The second graphic shows the sequence view annotated by issues in geometry and electron density. Residues are color-coded according to the number of geometric quality criteria for which they contain at least one outlier: green = 0, yellow = 1, orange = 2 and red = 3 or more. A red dot above a residue indicates a poor fit to the electron density ($RSRZ > 2$). Stretches of 2 or more consecutive residues without any outlier are shown as a green connector. Residues present in the sample, but not in the model, are shown in grey.

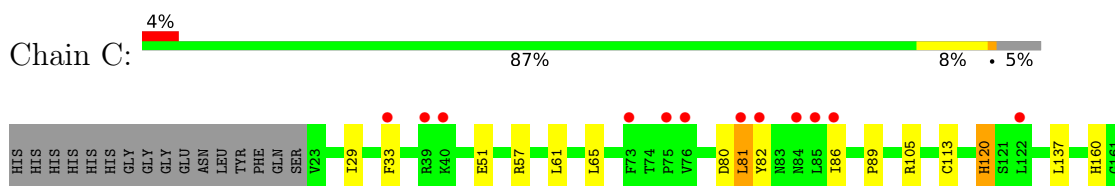
- Molecule 1: Arginase-2, mitochondrial



- Molecule 1: Arginase-2, mitochondrial



- Molecule 1: Arginase-2, mitochondrial





4 Data and refinement statistics

Property	Value	Source
Space group	P 21 21 21	Depositor
Cell constants a, b, c, α , β , γ	46.94Å 135.16Å 145.15Å 90.00° 90.00° 90.00°	Depositor
Resolution (Å)	98.92 – 1.86 98.92 – 1.86	Depositor EDS
% Data completeness (in resolution range)	99.7 (98.92-1.86) 99.7 (98.92-1.86)	Depositor EDS
R_{merge}	0.06	Depositor
R_{sym}	(Not available)	Depositor
$\langle I/\sigma(I) \rangle$ ¹	2.04 (at 1.86Å)	Xtrriage
Refinement program	BUSTER 2.11.7 PACIOREK	Depositor
R, R_{free}	0.239 , 0.260 0.228 , 0.252	Depositor DCC
R_{free} test set	3781 reflections (4.82%)	wwPDB-VP
Wilson B-factor (Å ²)	34.2	Xtrriage
Anisotropy	0.754	Xtrriage
Bulk solvent k_{sol} (e/Å ³), B_{sol} (Å ²)	0.33 , 35.7	EDS
L-test for twinning ²	$\langle L \rangle = 0.50$, $\langle L^2 \rangle = 0.33$	Xtrriage
Estimated twinning fraction	No twinning to report.	Xtrriage
F_o, F_c correlation	0.95	EDS
Total number of atoms	7644	wwPDB-VP
Average B, all atoms (Å ²)	51.0	wwPDB-VP

Xtrriage's analysis on translational NCS is as follows: *The largest off-origin peak in the Patterson function is 4.46% of the height of the origin peak. No significant pseudotranslation is detected.*

¹Intensities estimated from amplitudes.

²Theoretical values of $\langle |L| \rangle$, $\langle L^2 \rangle$ for acentric reflections are 0.5, 0.333 respectively for untwinned datasets, and 0.375, 0.2 for perfectly twinned datasets.

5 Model quality [i](#)

5.1 Standard geometry [i](#)

Bond lengths and bond angles in the following residue types are not validated in this section: A1H0A, MN

The Z score for a bond length (or angle) is the number of standard deviations the observed value is removed from the expected value. A bond length (or angle) with $|Z| > 5$ is considered an outlier worth inspection. RMSZ is the root-mean-square of all Z scores of the bond lengths (or angles).

Mol	Chain	Bond lengths		Bond angles	
		RMSZ	# Z >5	RMSZ	# Z >5
1	A	0.50	0/2484	0.64	0/3382
1	B	0.47	0/2531	0.63	0/3444
1	C	0.51	0/2484	0.66	0/3382
All	All	0.49	0/7499	0.64	0/10208

There are no bond length outliers.

There are no bond angle outliers.

There are no chirality outliers.

There are no planarity outliers.

5.2 Too-close contacts [i](#)

In the following table, the Non-H and H(model) columns list the number of non-hydrogen atoms and hydrogen atoms in the chain respectively. The H(added) column lists the number of hydrogen atoms added and optimized by MolProbity. The Clashes column lists the number of clashes within the asymmetric unit, whereas Symm-Clashes lists symmetry-related clashes.

Mol	Chain	Non-H	H(model)	H(added)	Clashes	Symm-Clashes
1	A	2430	0	2410	9	0
1	B	2477	0	2451	8	0
1	C	2430	0	2410	9	0
2	A	2	0	0	0	0
2	B	2	0	0	0	0
2	C	2	0	0	0	0
3	A	17	0	0	0	0
3	C	17	0	0	0	0
4	A	101	0	0	0	0
4	B	52	0	0	0	0

Continued on next page...

Continued from previous page...

Mol	Chain	Non-H	H(model)	H(added)	Clashes	Symm-Clashes
4	C	114	0	0	0	0
All	All	7644	0	7271	24	0

The all-atom clashscore is defined as the number of clashes found per 1000 atoms (including hydrogen atoms). The all-atom clashscore for this structure is 2.

All (24) close contacts within the same asymmetric unit are listed below, sorted by their clash magnitude.

Atom-1	Atom-2	Interatomic distance (Å)	Clash overlap (Å)
1:C:57:ARG:HD2	1:C:325:GLN:HE22	1.48	0.79
1:A:57:ARG:HH21	1:A:325:GLN:HE22	1.40	0.70
1:B:101:GLU:HB3	1:B:105:ARG:HH22	1.68	0.57
1:B:138:CYS:HB2	1:B:238:LEU:HD22	1.90	0.54
1:B:143:ASP:HB3	1:B:145:HIS:O	2.10	0.52
1:B:340:PRO:HB3	1:C:176:PRO:HB3	1.94	0.50
1:A:57:ARG:NH2	1:A:325:GLN:HE22	2.07	0.50
1:A:262:ALA:HB2	1:A:302:ALA:HB2	1.94	0.50
1:B:169:ARG:HG2	1:B:186:PRO:HB2	1.94	0.49
1:C:120:HIS:CG	1:C:295:VAL:HG21	2.49	0.48
1:A:108:SER:HB3	1:A:133:HIS:CE1	2.50	0.46
1:A:340:PRO:HB3	1:B:176:PRO:HB3	1.97	0.46
1:C:81:LEU:H	1:C:81:LEU:HD23	1.81	0.46
1:C:262:ALA:HB2	1:C:302:ALA:HB2	1.98	0.46
1:A:199:ARG:HD3	1:A:219:MET:HG3	1.97	0.45
1:A:120:HIS:CG	1:A:295:VAL:HG21	2.52	0.45
1:A:162:GLN:N	1:A:163:PRO:HD2	2.33	0.44
1:B:101:GLU:HB3	1:B:105:ARG:NH2	2.31	0.43
1:C:29:ILE:HD12	1:C:113:CYS:SG	2.59	0.43
1:C:137:LEU:HD12	1:C:137:LEU:C	2.40	0.42
1:A:137:LEU:C	1:A:137:LEU:HD12	2.40	0.41
1:C:82:TYR:HB3	1:C:86:ILE:HB	2.02	0.40
1:C:89:PRO:O	1:C:181:PHE:HE1	2.04	0.40
1:B:162:GLN:N	1:B:163:PRO:HD2	2.36	0.40

There are no symmetry-related clashes.

5.3 Torsion angles [i](#)

5.3.1 Protein backbone [i](#)

In the following table, the Percentiles column shows the percent Ramachandran outliers of the chain as a percentile score with respect to all X-ray entries followed by that with respect to entries of similar resolution.

The Analysed column shows the number of residues for which the backbone conformation was analysed, and the total number of residues.

Mol	Chain	Analysed	Favoured	Allowed	Outliers	Percentiles	
1	A	316/335 (94%)	308 (98%)	7 (2%)	1 (0%)	37	25
1	B	321/335 (96%)	308 (96%)	11 (3%)	2 (1%)	22	10
1	C	316/335 (94%)	310 (98%)	5 (2%)	1 (0%)	37	25
All	All	953/1005 (95%)	926 (97%)	23 (2%)	4 (0%)	30	18

All (4) Ramachandran outliers are listed below:

Mol	Chain	Res	Type
1	B	86	ILE
1	A	162	GLN
1	B	162	GLN
1	C	162	GLN

5.3.2 Protein sidechains [i](#)

In the following table, the Percentiles column shows the percent sidechain outliers of the chain as a percentile score with respect to all X-ray entries followed by that with respect to entries of similar resolution.

The Analysed column shows the number of residues for which the sidechain conformation was analysed, and the total number of residues.

Mol	Chain	Analysed	Rotameric	Outliers	Percentiles	
1	A	268/282 (95%)	258 (96%)	10 (4%)	29	14
1	B	273/282 (97%)	265 (97%)	8 (3%)	37	22
1	C	268/282 (95%)	254 (95%)	14 (5%)	19	7
All	All	809/846 (96%)	777 (96%)	32 (4%)	27	12

All (32) residues with a non-rotameric sidechain are listed below:

Mol	Chain	Res	Type
1	A	80	ASP
1	A	120	HIS
1	A	137	LEU
1	A	160	HIS
1	A	177	GLN
1	A	178	LEU
1	A	294	LEU
1	A	327	ARG
1	A	331	HIS
1	A	334	TYR
1	B	65	LEU
1	B	105	ARG
1	B	115	THR
1	B	120	HIS
1	B	160	HIS
1	B	294	LEU
1	B	327	ARG
1	B	335	ASP
1	C	33	PHE
1	C	51	GLU
1	C	61	LEU
1	C	65	LEU
1	C	80	ASP
1	C	81	LEU
1	C	105	ARG
1	C	120	HIS
1	C	160	HIS
1	C	168	LEU
1	C	177	GLN
1	C	213	ASP
1	C	294	LEU
1	C	306	GLU

Sometimes sidechains can be flipped to improve hydrogen bonding and reduce clashes. All (4) such sidechains are listed below:

Mol	Chain	Res	Type
1	A	228	GLN
1	A	325	GLN
1	B	284	HIS
1	C	228	GLN

5.3.3 RNA [i](#)

There are no RNA molecules in this entry.

5.4 Non-standard residues in protein, DNA, RNA chains [i](#)

There are no non-standard protein/DNA/RNA residues in this entry.

5.5 Carbohydrates [i](#)

There are no oligosaccharides in this entry.

5.6 Ligand geometry [i](#)

Of 8 ligands modelled in this entry, 6 are monoatomic - leaving 2 for Mogul analysis.

In the following table, the Counts columns list the number of bonds (or angles) for which Mogul statistics could be retrieved, the number of bonds (or angles) that are observed in the model and the number of bonds (or angles) that are defined in the Chemical Component Dictionary. The Link column lists molecule types, if any, to which the group is linked. The Z score for a bond length (or angle) is the number of standard deviations the observed value is removed from the expected value. A bond length (or angle) with $|Z| > 2$ is considered an outlier worth inspection. RMSZ is the root-mean-square of all Z scores of the bond lengths (or angles).

Mol	Type	Chain	Res	Link	Bond lengths			Bond angles		
					Counts	RMSZ	# Z > 2	Counts	RMSZ	# Z > 2
3	A1H0A	C	403	2	11,17,17	1.51	2 (18%)	14,25,25	1.37	3 (21%)
3	A1H0A	A	403	2	11,17,17	0.87	1 (9%)	14,25,25	1.41	3 (21%)

In the following table, the Chirals column lists the number of chiral outliers, the number of chiral centers analysed, the number of these observed in the model and the number defined in the Chemical Component Dictionary. Similar counts are reported in the Torsion and Rings columns. '-' means no outliers of that kind were identified.

Mol	Type	Chain	Res	Link	Chirals	Torsions	Rings
3	A1H0A	C	403	2	-	3/12/26/26	0/1/1/1
3	A1H0A	A	403	2	-	3/12/26/26	0/1/1/1

All (3) bond length outliers are listed below:

Mol	Chain	Res	Type	Atoms	Z	Observed(Å)	Ideal(Å)
3	C	403	A1H0A	O8-C6	3.76	1.34	1.22

Continued on next page...

Continued from previous page...

Mol	Chain	Res	Type	Atoms	Z	Observed(Å)	Ideal(Å)
3	C	403	A1H0A	O7-C6	-2.40	1.21	1.30
3	A	403	A1H0A	C4-C3	2.11	1.56	1.53

All (6) bond angle outliers are listed below:

Mol	Chain	Res	Type	Atoms	Z	Observed(°)	Ideal(°)
3	A	403	A1H0A	O7-C6-C5	2.77	120.63	113.59
3	C	403	A1H0A	O7-C6-C5	2.70	120.44	113.59
3	A	403	A1H0A	C10-C9-C5	2.39	119.43	115.25
3	C	403	A1H0A	C4-C3-C2	2.29	105.94	102.19
3	C	403	A1H0A	C9-C10-C11	-2.10	106.92	113.19
3	A	403	A1H0A	C9-C10-C11	-2.07	107.03	113.19

There are no chirality outliers.

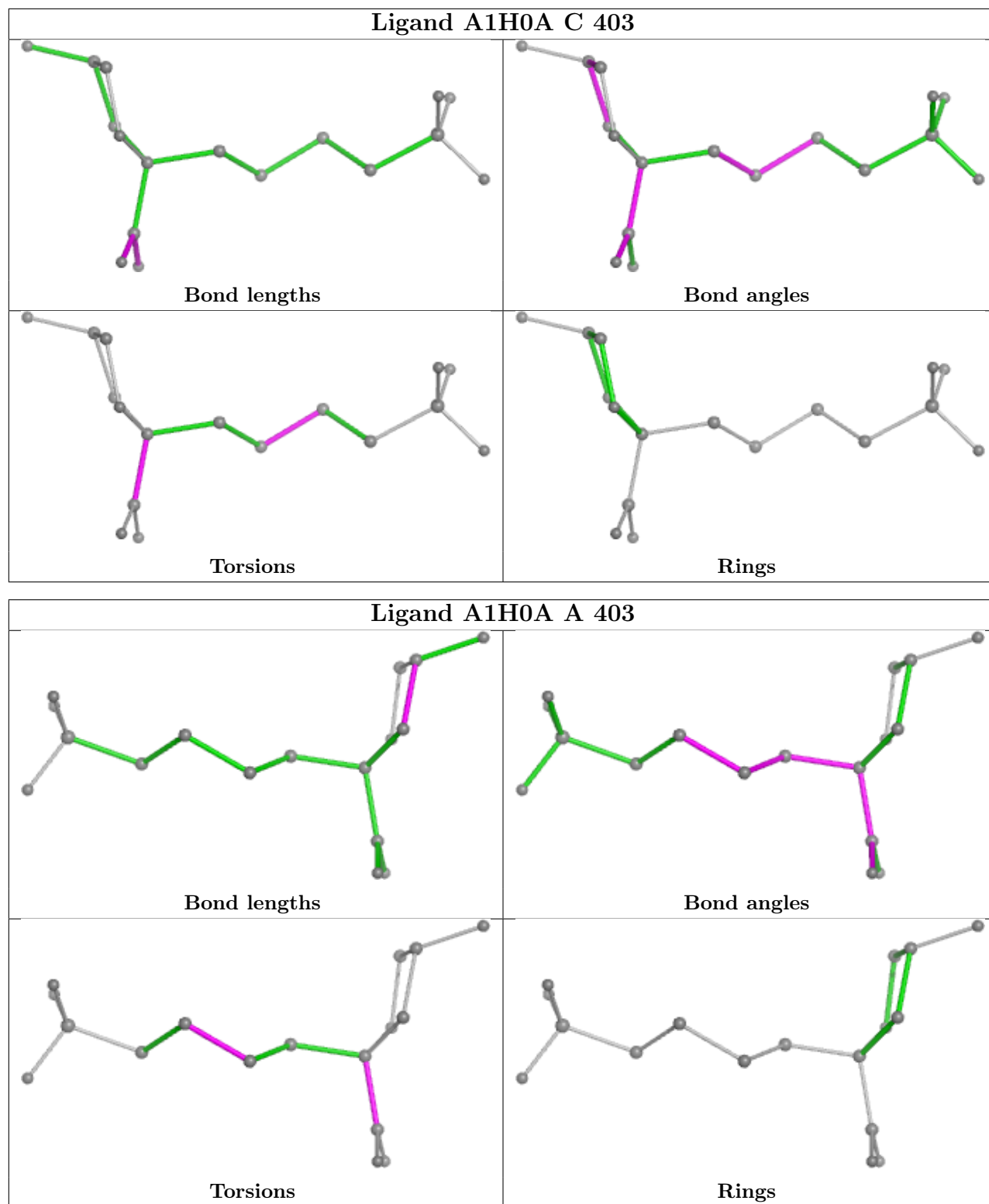
All (6) torsion outliers are listed below:

Mol	Chain	Res	Type	Atoms
3	C	403	A1H0A	C9-C10-C11-C12
3	A	403	A1H0A	C4-C5-C6-O7
3	C	403	A1H0A	C4-C5-C6-O7
3	C	403	A1H0A	C4-C5-C6-O8
3	A	403	A1H0A	C9-C10-C11-C12
3	A	403	A1H0A	C4-C5-C6-O8

There are no ring outliers.

No monomer is involved in short contacts.

The following is a two-dimensional graphical depiction of Mogul quality analysis of bond lengths, bond angles, torsion angles, and ring geometry for all instances of the Ligand of Interest. In addition, ligands with molecular weight > 250 and outliers as shown on the validation Tables will also be included. For torsion angles, if less than 5% of the Mogul distribution of torsion angles is within 10 degrees of the torsion angle in question, then that torsion angle is considered an outlier. Any bond that is central to one or more torsion angles identified as an outlier by Mogul will be highlighted in the graph. For rings, the root-mean-square deviation (RMSD) between the ring in question and similar rings identified by Mogul is calculated over all ring torsion angles. If the average RMSD is greater than 60 degrees and the minimal RMSD between the ring in question and any Mogul-identified rings is also greater than 60 degrees, then that ring is considered an outlier. The outliers are highlighted in purple. The color gray indicates Mogul did not find sufficient equivalents in the CSD to analyse the geometry.



5.7 Other polymers [\(i\)](#)

There are no such residues in this entry.

5.8 Polymer linkage issues

There are no chain breaks in this entry.

6 Fit of model and data

6.1 Protein, DNA and RNA chains

In the following table, the column labelled ‘#RSRZ > 2’ contains the number (and percentage) of RSRZ outliers, followed by percent RSRZ outliers for the chain as percentile scores relative to all X-ray entries and entries of similar resolution. The OWAB column contains the minimum, median, 95th percentile and maximum values of the occupancy-weighted average B-factor per residue. The column labelled ‘Q < 0.9’ lists the number of (and percentage) of residues with an average occupancy less than 0.9.

Mol	Chain	Analysed	<RSRZ>	#RSRZ>2	OWAB(Å ²)	Q<0.9
1	A	318/335 (94%)	0.42	20 (6%) 27 29	25, 37, 75, 123	0
1	B	324/335 (96%)	2.28	178 (54%) 0 0	30, 66, 124, 150	0
1	C	318/335 (94%)	0.40	13 (4%) 42 44	24, 36, 71, 101	0
All	All	960/1005 (95%)	1.04	211 (21%) 3 2	24, 43, 110, 150	0

All (211) RSRZ outliers are listed below:

Mol	Chain	Res	Type	RSRZ
1	B	99	LEU	7.1
1	B	92	VAL	6.9
1	B	94	LEU	6.1
1	B	33	PHE	6.1
1	C	33	PHE	6.1
1	B	29	ILE	6.0
1	B	31	ALA	5.8
1	B	159	LEU	5.7
1	B	71	LEU	5.5
1	A	337	LEU	5.5
1	B	107	VAL	5.4
1	B	106	ALA	5.4
1	B	86	ILE	5.2
1	B	81	LEU	5.2
1	B	76	VAL	5.1
1	B	176	PRO	5.0
1	B	122	LEU	4.9
1	B	42	VAL	4.9
1	B	111	TYR	4.9
1	B	184	ILE	4.7
1	B	103	VAL	4.7
1	B	181	PHE	4.7
1	B	85	LEU	4.7

Continued on next page...

Continued from previous page...

Mol	Chain	Res	Type	RSRZ
1	B	93	GLY	4.7
1	B	124	ILE	4.6
1	B	193	ILE	4.6
1	B	100	ALA	4.5
1	B	171	LEU	4.5
1	B	183	TRP	4.5
1	A	338	PRO	4.4
1	B	134	CYS	4.4
1	B	102	VAL	4.4
1	B	129	GLY	4.3
1	B	95	ALA	4.3
1	B	178	LEU	4.3
1	B	238	LEU	4.3
1	B	113	CYS	4.3
1	B	168	LEU	4.3
1	B	46	PRO	4.2
1	B	137	LEU	4.2
1	A	334	TYR	4.2
1	B	47	ALA	4.1
1	B	98	GLU	4.1
1	B	308	ALA	4.0
1	B	174	LYS	4.0
1	B	28	VAL	4.0
1	B	153	THR	4.0
1	B	289	LEU	4.0
1	B	166	PHE	3.9
1	B	32	PRO	3.9
1	B	188	ILE	3.9
1	B	118	GLY	3.9
1	B	175	VAL	3.8
1	B	121	SER	3.8
1	B	127	ILE	3.8
1	B	82	TYR	3.8
1	B	89	PRO	3.8
1	B	117	GLY	3.8
1	B	164	VAL	3.8
1	A	339	THR	3.8
1	B	108	SER	3.7
1	B	138	CYS	3.7
1	B	152	LEU	3.7
1	B	179	PRO	3.7
1	B	130	HIS	3.7

Continued on next page...

Continued from previous page...

Mol	Chain	Res	Type	RSRZ
1	B	68	PHE	3.7
1	B	297	VAL	3.7
1	B	116	LEU	3.6
1	B	207	PHE	3.6
1	B	302	ALA	3.6
1	B	77	PRO	3.6
1	B	87	VAL	3.6
1	B	45	GLY	3.6
1	B	295	VAL	3.5
1	B	105	ARG	3.5
1	B	208	ILE	3.5
1	B	126	THR	3.5
1	C	81	LEU	3.5
1	B	287	GLY	3.4
1	B	96	ASN	3.4
1	B	123	ALA	3.4
1	B	163	PRO	3.4
1	A	332	ILE	3.4
1	B	74	THR	3.4
1	B	115	THR	3.4
1	B	150	THR	3.4
1	B	167	LEU	3.4
1	B	294	LEU	3.4
1	B	41	GLY	3.3
1	B	30	GLY	3.3
1	B	157	GLY	3.3
1	B	84	ASN	3.3
1	B	151	PRO	3.3
1	A	340	PRO	3.3
1	B	75	PRO	3.2
1	B	329	GLY	3.2
1	B	165	SER	3.2
1	B	209	LEU	3.2
1	A	23	VAL	3.2
1	B	131	ALA	3.2
1	B	262	ALA	3.1
1	A	77	PRO	3.1
1	B	135	PRO	3.1
1	B	180	GLY	3.1
1	B	104	SER	3.1
1	B	73	PHE	3.1
1	B	119	ASP	3.0

Continued on next page...

Continued from previous page...

Mol	Chain	Res	Type	RSRZ
1	C	86	ILE	3.0
1	B	194	VAL	3.0
1	B	49	ILE	2.9
1	B	239	ILE	2.9
1	B	154	THR	2.9
1	B	65	LEU	2.9
1	B	139	VAL	2.9
1	B	340	PRO	2.9
1	B	160	HIS	2.9
1	B	44	HIS	2.9
1	B	120	HIS	2.8
1	B	301	LEU	2.8
1	B	72	SER	2.8
1	B	214	ILE	2.8
1	B	148	ILE	2.8
1	B	88	ASN	2.7
1	B	114	VAL	2.7
1	B	146	ALA	2.7
1	B	91	SER	2.7
1	B	204	PRO	2.7
1	B	125	GLY	2.7
1	B	187	CYS	2.7
1	B	128	SER	2.7
1	B	290	SER	2.7
1	B	97	GLN	2.7
1	B	101	GLU	2.7
1	C	73	PHE	2.6
1	B	245	PRO	2.6
1	A	65	LEU	2.6
1	B	237	LEU	2.6
1	B	248	LEU	2.6
1	B	52	ALA	2.6
1	B	191	ALA	2.6
1	B	331	HIS	2.6
1	B	149	ASN	2.5
1	B	36	GLY	2.5
1	B	55	MET	2.5
1	B	265	THR	2.5
1	B	303	THR	2.5
1	C	39	ARG	2.5
1	B	212	TYR	2.5
1	C	82	TYR	2.5

Continued on next page...

Continued from previous page...

Mol	Chain	Res	Type	RSRZ
1	A	335	ASP	2.5
1	B	156	SER	2.4
1	B	54	LEU	2.4
1	B	264	GLY	2.4
1	B	288	LEU	2.4
1	B	133	HIS	2.4
1	B	155	SER	2.4
1	B	186	PRO	2.4
1	B	334	TYR	2.4
1	B	305	GLU	2.4
1	B	172	GLN	2.3
1	A	333	VAL	2.3
1	B	27	ALA	2.3
1	B	34	SER	2.3
1	B	240	GLY	2.3
1	C	75	PRO	2.3
1	A	76	VAL	2.3
1	B	201	VAL	2.3
1	C	40	LYS	2.3
1	A	302	ALA	2.2
1	B	161	GLY	2.2
1	B	333	VAL	2.2
1	C	76	VAL	2.2
1	B	173	ASP	2.2
1	B	304	SER	2.2
1	C	85	LEU	2.2
1	B	263	THR	2.2
1	A	108	SER	2.2
1	B	66	LYS	2.2
1	B	158	ASN	2.2
1	B	185	LYS	2.2
1	B	316	VAL	2.2
1	B	53	GLY	2.2
1	B	110	GLY	2.2
1	B	35	GLN	2.2
1	C	177	GLN	2.2
1	B	299	PRO	2.2
1	B	332	ILE	2.2
1	B	39	ARG	2.2
1	B	190	SER	2.1
1	B	141	TRP	2.1
1	A	64	HIS	2.1

Continued on next page...

Continued from previous page...

Mol	Chain	Res	Type	RSRZ
1	B	252	ILE	2.1
1	B	69	GLY	2.1
1	A	63	CYS	2.1
1	B	48	ALA	2.1
1	B	40	LYS	2.1
1	B	311	THR	2.1
1	C	84	ASN	2.1
1	A	331	HIS	2.0
1	C	122	LEU	2.0
1	A	33	PHE	2.0
1	B	177	GLN	2.0
1	B	246	ILE	2.0
1	B	80	ASP	2.0
1	B	147	ASP	2.0
1	B	335	ASP	2.0
1	B	241	LYS	2.0
1	A	75	PRO	2.0
1	A	301	LEU	2.0
1	B	182	SER	2.0
1	B	249	SER	2.0

6.2 Non-standard residues in protein, DNA, RNA chains [i](#)

There are no non-standard protein/DNA/RNA residues in this entry.

6.3 Carbohydrates [i](#)

There are no monosaccharides in this entry.

6.4 Ligands [i](#)

In the following table, the Atoms column lists the number of modelled atoms in the group and the number defined in the chemical component dictionary. The B-factors column lists the minimum, median, 95th percentile and maximum values of B factors of atoms in the group. The column labelled 'Q< 0.9' lists the number of atoms with occupancy less than 0.9.

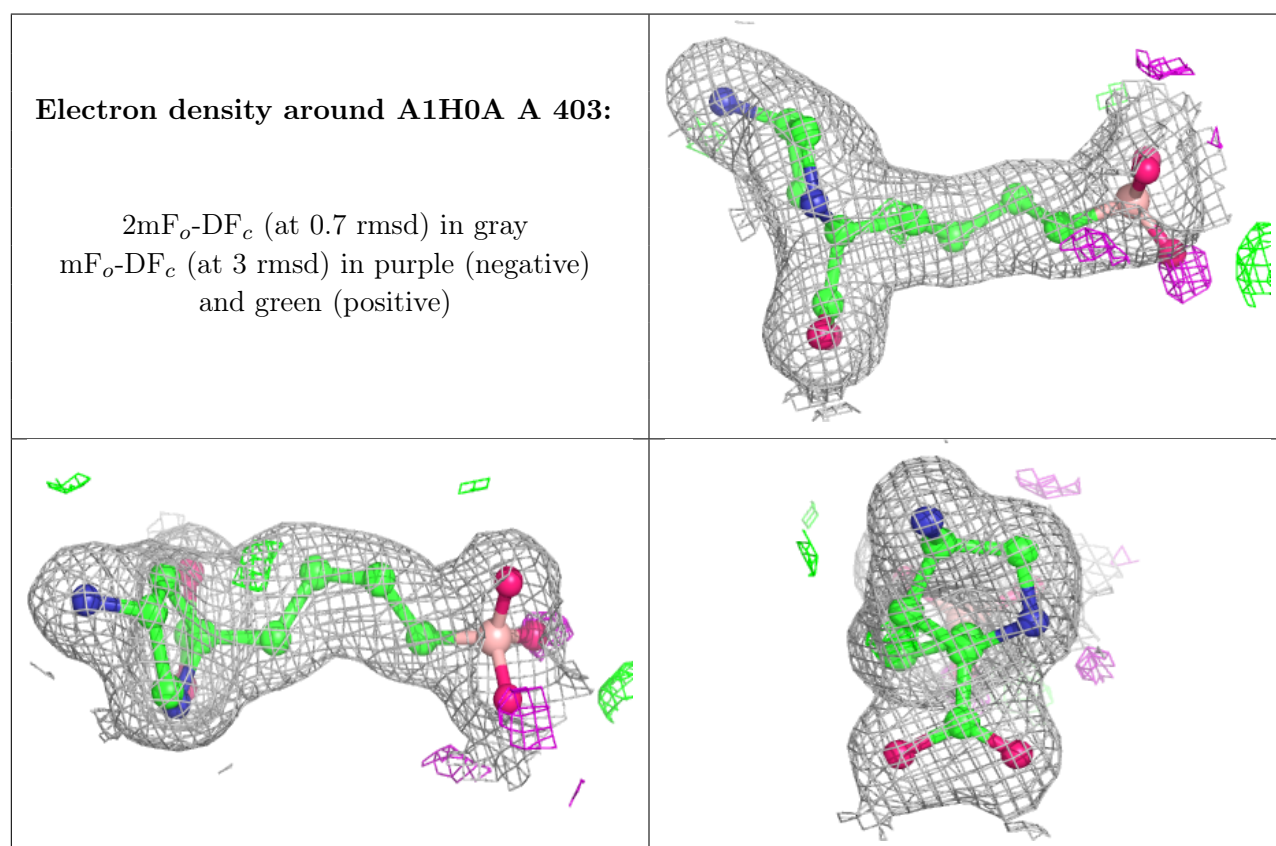
Mol	Type	Chain	Res	Atoms	RSCC	RSR	B-factors(\AA^2)	Q<0.9
2	MN	B	500	1/1	0.86	0.11	59,59,59,59	0
3	A1H0A	A	403	17/17	0.89	0.10	33,36,40,48	0
3	A1H0A	C	403	17/17	0.91	0.09	32,38,43,43	0

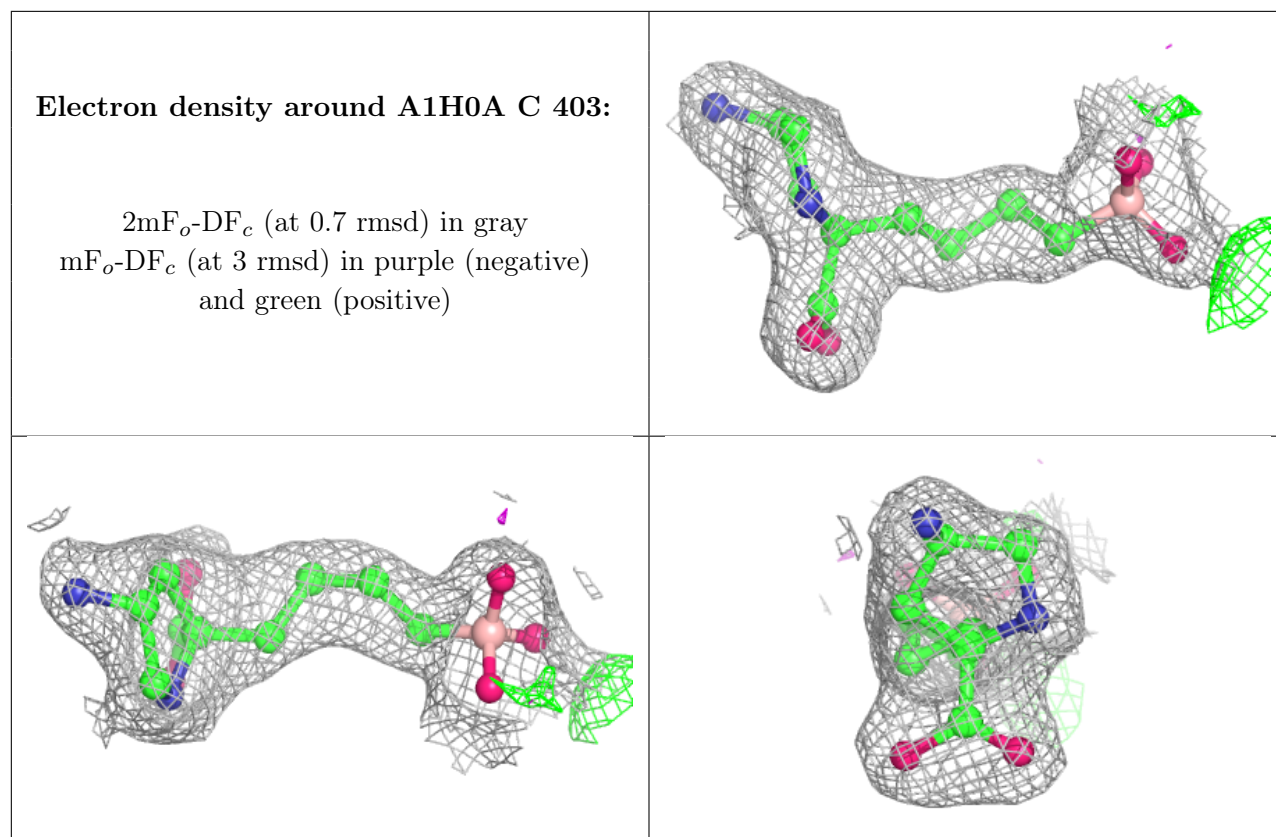
Continued on next page...

Continued from previous page...

Mol	Type	Chain	Res	Atoms	RSCC	RSR	B-factors(\AA^2)	Q<0.9
2	MN	B	501	1/1	0.94	0.07	48,48,48,48	0
2	MN	A	402	1/1	0.97	0.06	35,35,35,35	0
2	MN	C	402	1/1	0.98	0.04	31,31,31,31	0
2	MN	C	401	1/1	0.99	0.03	29,29,29,29	0
2	MN	A	401	1/1	0.99	0.04	31,31,31,31	0

The following is a graphical depiction of the model fit to experimental electron density of all instances of the Ligand of Interest. In addition, ligands with molecular weight > 250 and outliers as shown on the geometry validation Tables will also be included. Each fit is shown from different orientation to approximate a three-dimensional view.





6.5 Other polymers [i](#)

There are no such residues in this entry.