



# Full wwPDB X-ray Structure Validation Report ⓘ

Mar 13, 2018 – 07:39 pm GMT

PDB ID : 3RH4  
Title : DNA Polymerase Beta with a dideoxy-terminated primer with an incoming ribonucleotide (rCTP)  
Authors : Cavanaugh, N.A.; Beard, W.A.; Batra, V.K.; Perera, L.; Pedersen, L.G.; Wilson, S.H.  
Deposited on : 2011-04-11  
Resolution : 1.92 Å(reported)

This is a Full wwPDB X-ray Structure Validation Report for a publicly released PDB entry.

We welcome your comments at [validation@mail.wwpdb.org](mailto:validation@mail.wwpdb.org)

A user guide is available at

<https://www.wwpdb.org/validation/2017/XrayValidationReportHelp>

with specific help available everywhere you see the ⓘ symbol.

---

The following versions of software and data (see [references ⓘ](#)) were used in the production of this report:

MolProbity : 4.02b-467  
Mogul : 1.7.3 (157068), CSD as539be (2018)  
Xtriage (Phenix) : 1.13  
EDS : trunk31020  
Percentile statistics : 20171227.v01 (using entries in the PDB archive December 27th 2017)  
Refmac : 5.8.0158  
CCP4 : 7.0 (Gargrove)  
Ideal geometry (proteins) : Engh & Huber (2001)  
Ideal geometry (DNA, RNA) : Parkinson et al. (1996)  
Validation Pipeline (wwPDB-VP) : trunk31020

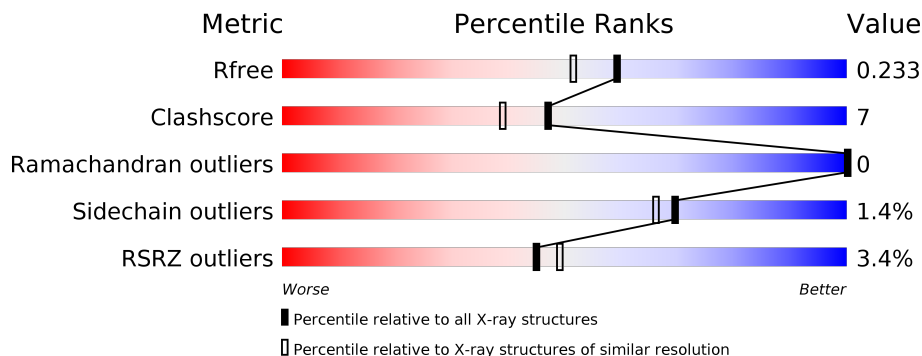
# 1 Overall quality at a glance

The following experimental techniques were used to determine the structure:

*X-RAY DIFFRACTION*

The reported resolution of this entry is 1.92 Å.

Percentile scores (ranging between 0-100) for global validation metrics of the entry are shown in the following graphic. The table shows the number of entries on which the scores are based.



Metric	Whole archive (#Entries)	Similar resolution (#Entries, resolution range(Å))
$R_{free}$	111664	6904 (1.94-1.90)
Clashscore	122126	7577 (1.94-1.90)
Ramachandran outliers	120053	7491 (1.94-1.90)
Sidechain outliers	120020	7491 (1.94-1.90)
RSRZ outliers	108989	6759 (1.94-1.90)

The table below summarises the geometric issues observed across the polymeric chains and their fit to the electron density. The red, orange, yellow and green segments on the lower bar indicate the fraction of residues that contain outliers for  $\geq 3$ , 2, 1 and 0 types of geometric quality criteria. A grey segment represents the fraction of residues that are not modelled. The numeric value for each fraction is indicated below the corresponding segment, with a dot representing fractions  $\leq 5\%$ . The upper red bar (where present) indicates the fraction of residues that have poor fit to the electron density. The numeric value is given above the bar.

Mol	Chain	Length	Quality of chain
1	T	16	
2	P	10	
3	D	5	
4	A	335	

## 2 Entry composition i

There are 9 unique types of molecules in this entry. The entry contains 3865 atoms, of which 0 are hydrogens and 0 are deuteriums.

In the tables below, the ZeroOcc column contains the number of atoms modelled with zero occupancy, the AltConf column contains the number of residues with at least one atom in alternate conformation and the Trace column contains the number of residues modelled with at most 2 atoms.

- Molecule 1 is a DNA chain called 5'-D(\*CP\*CP\*GP\*AP\*CP\*GP\*CP\*CP\*GP\*CP\*AP\*T P\*CP\*AP\*GP\*C)-3'.

Mol	Chain	Residues	Atoms					ZeroOcc	AltConf	Trace
			Total	C	N	O	P			
1	T	16	320	152	61	92	15	0	0	0

- Molecule 2 is a DNA chain called 5'-D(\*GP\*CP\*TP\*GP\*AP\*TP\*GP\*CP\*GP\*(DDG))-3'.

Mol	Chain	Residues	Atoms					ZeroOcc	AltConf	Trace
			Total	C	N	O	P			
2	P	10	205	98	40	58	9	0	0	0

- Molecule 3 is a DNA chain called 5'-D(P\*GP\*TP\*CP\*GP\*G)-3'.

Mol	Chain	Residues	Atoms					ZeroOcc	AltConf	Trace
			Total	C	N	O	P			
3	D	5	106	49	20	32	5	0	0	0

- Molecule 4 is a protein called DNA polymerase beta.

Mol	Chain	Residues	Atoms					ZeroOcc	AltConf	Trace
			Total	C	N	O	S			
4	A	326	2710	1713	475	513	9	0	11	0

- Molecule 5 is MANGANESE (II) ION (three-letter code: MN) (formula: Mn).

Mol	Chain	Residues	Atoms		ZeroOcc	AltConf
5	P	1	Total	Mn	0	0
			1	1		
5	A	6	Total	Mn	0	0
			6	6		
5	D	1	Total	Mn	0	0
			1	1		

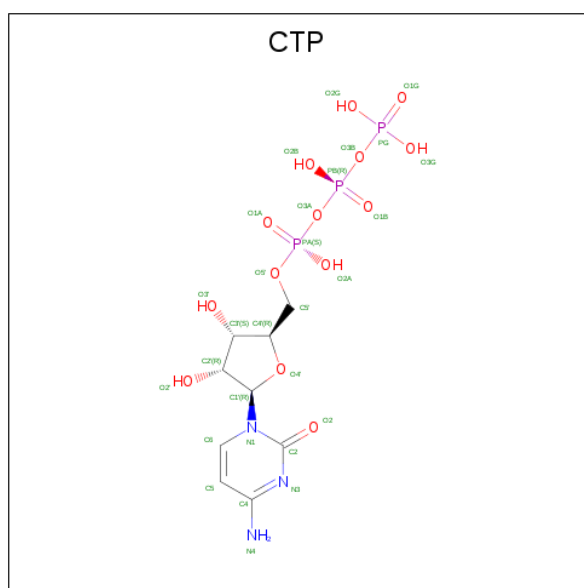
- Molecule 6 is SODIUM ION (three-letter code: NA) (formula: Na).

Mol	Chain	Residues	Atoms		ZeroOcc	AltConf
6	A	2	Total	Na	0	0
			2	2		

- Molecule 7 is CHLORIDE ION (three-letter code: CL) (formula: Cl).

Mol	Chain	Residues	Atoms		ZeroOcc	AltConf
7	A	6	Total	Cl	0	0
			6	6		

- Molecule 8 is CYTIDINE-5'-TRIPHOSPHATE (three-letter code: CTP) (formula: C<sub>9</sub>H<sub>16</sub>N<sub>3</sub>O<sub>14</sub>P<sub>3</sub>).



Mol	Chain	Residues	Atoms				ZeroOcc	AltConf	
8	A	1	Total	C	N	O	P	0	0
			29	9	3	14	3		
8	A	1	Total	C	N	O	P	0	0
			29	9	3	14	3		

- Molecule 9 is water.

Mol	Chain	Residues	Atoms		ZeroOcc	AltConf
9	T	58	Total	O	0	0
			58	58		
9	P	23	Total	O	0	0
			23	23		

*Continued on next page...*

*Continued from previous page...*

<b>Mol</b>	<b>Chain</b>	<b>Residues</b>	<b>Atoms</b>	<b>ZeroOcc</b>	<b>AltConf</b>
9	D	12	Total O 12 12	0	0
9	A	357	Total O 357 357	0	0

### 3 Residue-property plots [i](#)

These plots are drawn for all protein, RNA and DNA chains in the entry. The first graphic for a chain summarises the proportions of the various outlier classes displayed in the second graphic. The second graphic shows the sequence view annotated by issues in geometry and electron density. Residues are color-coded according to the number of geometric quality criteria for which they contain at least one outlier: green = 0, yellow = 1, orange = 2 and red = 3 or more. A red dot above a residue indicates a poor fit to the electron density ( $RSRZ > 2$ ). Stretches of 2 or more consecutive residues without any outlier are shown as a green connector. Residues present in the sample, but not in the model, are shown in grey.

- Molecule 1: 5'-D(\*CP\*CP\*GP\*AP\*CP\*GP\*CP\*CP\*GP\*CP\*AP\*TP\*CP\*AP\*GP\*C)-3'

Chain T: 



- Molecule 2: 5'-D(\*GP\*CP\*TP\*GP\*AP\*TP\*GP\*CP\*GP\*(DDG))-3'

Chain P: 




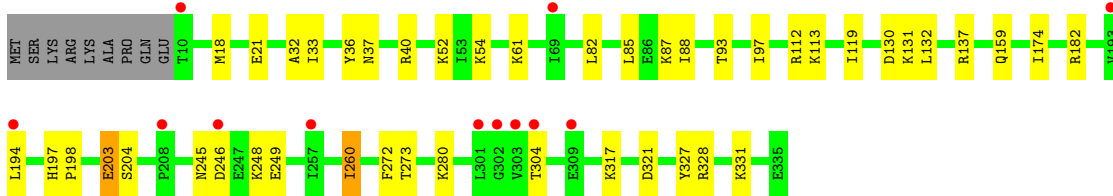
- Molecule 3: 5'-D(P\*GP\*TP\*CP\*GP\*G)-3'

Chain D: 



- Molecule 4: DNA polymerase beta

Chain A: 



## 4 Data and refinement statistics

Property	Value	Source
Space group	P 1 21 1	Depositor
Cell constants a, b, c, $\alpha$ , $\beta$ , $\gamma$	51.17Å 79.79Å 55.00Å 90.00° 107.95° 90.00°	Depositor
Resolution (Å)	22.59 – 1.92 22.59 – 1.92	Depositor EDS
% Data completeness (in resolution range)	86.0 (22.59-1.92) 86.0 (22.59-1.92)	Depositor EDS
$R_{merge}$	0.06	Depositor
$R_{sym}$	(Not available)	Depositor
$\langle I/\sigma(I) \rangle$ <sup>1</sup>	1.77 (at 1.92Å)	Xtrriage
Refinement program	PHENIX (phenix.refine: 1.5_2)	Depositor
R, $R_{free}$	0.175 , 0.240 0.166 , 0.233	Depositor DCC
$R_{free}$ test set	3044 reflections (10.01%)	wwPDB-VP
Wilson B-factor (Å <sup>2</sup> )	24.6	Xtrriage
Anisotropy	0.216	Xtrriage
Bulk solvent $k_{sol}$ (e/Å <sup>3</sup> ), $B_{sol}$ (Å <sup>2</sup> )	0.35 , 53.8	EDS
L-test for twinning <sup>2</sup>	$\langle  L  \rangle = 0.48$ , $\langle L^2 \rangle = 0.31$	Xtrriage
Estimated twinning fraction	No twinning to report.	Xtrriage
$F_o, F_c$ correlation	0.96	EDS
Total number of atoms	3865	wwPDB-VP
Average B, all atoms (Å <sup>2</sup> )	28.0	wwPDB-VP

Xtrriage's analysis on translational NCS is as follows: *The largest off-origin peak in the Patterson function is 6.75% of the height of the origin peak. No significant pseudotranslation is detected.*

<sup>1</sup>Intensities estimated from amplitudes.

<sup>2</sup>Theoretical values of  $\langle |L| \rangle$ ,  $\langle L^2 \rangle$  for acentric reflections are 0.5, 0.333 respectively for untwinned datasets, and 0.375, 0.2 for perfectly twinned datasets.

## 5 Model quality [i](#)

### 5.1 Standard geometry [i](#)

Bond lengths and bond angles in the following residue types are not validated in this section: NA, DDG, MN, CTP, CL

The Z score for a bond length (or angle) is the number of standard deviations the observed value is removed from the expected value. A bond length (or angle) with  $|Z| > 5$  is considered an outlier worth inspection. RMSZ is the root-mean-square of all Z scores of the bond lengths (or angles).

Mol	Chain	Bond lengths		Bond angles	
		RMSZ	# $ Z  > 5$	RMSZ	# $ Z  > 5$
1	T	0.68	0/358	1.36	5/549 (0.9%)
2	P	0.63	0/206	1.20	0/317
3	D	1.18	1/118 (0.8%)	1.41	2/179 (1.1%)
4	A	0.35	0/2760	0.51	0/3703
All	All	0.46	1/3442 (0.0%)	0.76	7/4748 (0.1%)

All (1) bond length outliers are listed below:

Mol	Chain	Res	Type	Atoms	Z	Observed(Å)	Ideal(Å)
3	D	1	DG	OP3-P	-10.85	1.48	1.61

All (7) bond angle outliers are listed below:

Mol	Chain	Res	Type	Atoms	Z	Observed(°)	Ideal(°)
1	T	6	DG	O4'-C1'-N9	-10.32	100.78	108.00
3	D	1	DG	O4'-C1'-N9	-7.29	102.90	108.00
1	T	11	DA	O4'-C1'-N9	-7.07	103.05	108.00
3	D	2	DT	O4'-C1'-N1	-6.71	103.31	108.00
1	T	7	DC	P-O3'-C3'	6.32	127.28	119.70
1	T	5	DC	O4'-C1'-N1	5.84	112.09	108.00
1	T	7	DC	C1'-O4'-C4'	-5.58	104.52	110.10

There are no chirality outliers.

There are no planarity outliers.

### 5.2 Too-close contacts [i](#)

In the following table, the Non-H and H(model) columns list the number of non-hydrogen atoms and hydrogen atoms in the chain respectively. The H(added) column lists the number of hydrogen



atoms added and optimized by MolProbity. The Clashes column lists the number of clashes within the asymmetric unit, whereas Symm-Clashes lists symmetry related clashes.

Mol	Chain	Non-H	H(model)	H(added)	Clashes	Symm-Clashes
1	T	320	0	179	4	0
2	P	205	0	114	1	0
3	D	106	0	57	0	0
4	A	2710	0	2731	39	0
5	A	6	0	0	0	0
5	D	1	0	0	0	0
5	P	1	0	0	0	0
6	A	2	0	0	0	0
7	A	6	0	0	3	0
8	A	58	0	24	2	0
9	A	357	0	0	10	0
9	D	12	0	0	0	0
9	P	23	0	0	0	0
9	T	58	0	0	0	0
All	All	3865	0	3105	44	0

The all-atom clashscore is defined as the number of clashes found per 1000 atoms (including hydrogen atoms). The all-atom clashscore for this structure is 7.

All (44) close contacts within the same asymmetric unit are listed below, sorted by their clash magnitude.

Atom-1	Atom-2	Interatomic distance (Å)	Clash overlap (Å)
4:A:194:LEU:HD11	4:A:260:ILE:HG13	1.34	1.03
4:A:317[B]:LYS:HD3	4:A:327:TYR:HB2	1.55	0.86
4:A:87:LYS:HD2	9:A:633:HOH:O	1.91	0.70
4:A:194:LEU:CD1	4:A:260:ILE:HG13	2.17	0.69
4:A:93:THR:O	4:A:97[B]:ILE:HG12	1.94	0.68
4:A:87:LYS:HG2	9:A:396:HOH:O	1.93	0.67
8:A:350:CTP:H5'1	8:A:350:CTP:O3B	1.95	0.65
4:A:159:GLN:OE1	7:A:357:CL:CL	2.56	0.61
4:A:40:ARG:HD3	9:A:495:HOH:O	2.01	0.59
4:A:87:LYS:C	4:A:87:LYS:HD3	2.25	0.57
4:A:317[B]:LYS:HE3	4:A:321:ASP:OD1	2.05	0.56
4:A:87:LYS:HD3	4:A:88:ILE:N	2.21	0.55
4:A:87:LYS:HE2	9:A:396:HOH:O	2.07	0.54
4:A:36:TYR:CZ	4:A:40:ARG:HD2	2.43	0.53
4:A:203[B]:GLU:O	4:A:204:SER:HB3	2.09	0.52
4:A:130:ASP:HA	4:A:137[B]:ARG:HH12	1.75	0.51
1:T:13:DC:H2''	1:T:14:DA:C8	2.46	0.50

*Continued on next page...*

Continued from previous page...

Atom-1	Atom-2	Interatomic distance (Å)	Clash overlap (Å)
4:A:197:HIS:ND1	4:A:198:PRO:HD2	2.27	0.49
4:A:32:ALA:HB1	7:A:354:CL:CL	2.50	0.49
4:A:248:LYS:HG2	4:A:249:GLU:N	2.27	0.48
4:A:97[B]:ILE:CD1	4:A:112:ARG:HA	2.44	0.48
4:A:18:MET:SD	4:A:82:LEU:HD22	2.54	0.47
4:A:182:ARG:HD3	4:A:273:THR:OG1	2.14	0.47
4:A:61:LYS:NZ	9:A:661:HOH:O	2.47	0.47
4:A:52:LYS:HG2	4:A:54:LYS:NZ	2.30	0.47
4:A:36:TYR:CE1	4:A:40:ARG:HD2	2.50	0.47
4:A:21:GLU:HG2	4:A:85:LEU:HD22	1.97	0.46
1:T:2:DC:H2''	1:T:3:DG:N7	2.30	0.46
4:A:113[B]:LYS:HE3	9:A:545:HOH:O	2.15	0.46
1:T:2:DC:H2''	1:T:3:DG:C8	2.51	0.45
4:A:112:ARG:HB3	9:A:484:HOH:O	2.16	0.45
4:A:328:ARG:HD2	9:A:349:HOH:O	2.17	0.44
4:A:132:LEU:HB2	4:A:137[B]:ARG:HG3	2.00	0.44
2:P:1:DG:H2'	2:P:2:DC:C6	2.52	0.44
4:A:97[B]:ILE:HD12	4:A:112:ARG:HA	2.00	0.43
1:T:6:DG:N7	4:A:280:LYS:NZ	2.53	0.43
4:A:245:ASN:O	4:A:246:ASP:HB2	2.19	0.42
4:A:113[B]:LYS:HE2	9:A:687:HOH:O	2.18	0.42
4:A:174:ILE:HD12	8:A:350:CTP:C2	2.55	0.42
4:A:119:ILE:HD11	4:A:131:LYS:HD2	2.03	0.41
4:A:113[A]:LYS:NZ	9:A:435:HOH:O	2.54	0.41
4:A:33:ILE:HG12	4:A:37:ASN:ND2	2.36	0.41
4:A:331:LYS:HG2	7:A:356:CL:CL	2.58	0.41
4:A:197:HIS:HA	4:A:198:PRO:HD3	1.94	0.40

There are no symmetry-related clashes.

## 5.3 Torsion angles [i](#)

### 5.3.1 Protein backbone [i](#)

In the following table, the Percentiles column shows the percent Ramachandran outliers of the chain as a percentile score with respect to all X-ray entries followed by that with respect to entries of similar resolution.

The Analysed column shows the number of residues for which the backbone conformation was analysed, and the total number of residues.

Mol	Chain	Analysed	Favoured	Allowed	Outliers	Percentiles	
4	A	335/335 (100%)	325 (97%)	10 (3%)	0	100	100

There are no Ramachandran outliers to report.

### 5.3.2 Protein sidechains [i](#)

In the following table, the Percentiles column shows the percent sidechain outliers of the chain as a percentile score with respect to all X-ray entries followed by that with respect to entries of similar resolution.

The Analysed column shows the number of residues for which the sidechain conformation was analysed, and the total number of residues.

Mol	Chain	Analysed	Rotameric	Outliers	Percentiles	
4	A	298/295 (101%)	293 (98%)	5 (2%)	63	59

All (5) residues with a non-rotameric sidechain are listed below:

Mol	Chain	Res	Type
4	A	203[A]	GLU
4	A	203[B]	GLU
4	A	260	ILE
4	A	272	PHE
4	A	304	THR

Some sidechains can be flipped to improve hydrogen bonding and reduce clashes. All (3) such sidechains are listed below:

Mol	Chain	Res	Type
4	A	31	GLN
4	A	37	ASN
4	A	159	GLN

### 5.3.3 RNA [i](#)

There are no RNA molecules in this entry.

## 5.4 Non-standard residues in protein, DNA, RNA chains [i](#)

1 non-standard protein/DNA/RNA residue is modelled in this entry.

In the following table, the Counts columns list the number of bonds (or angles) for which Mogul statistics could be retrieved, the number of bonds (or angles) that are observed in the model and the number of bonds (or angles) that are defined in the Chemical Component Dictionary. The Link column lists molecule types, if any, to which the group is linked. The Z score for a bond length (or angle) is the number of standard deviations the observed value is removed from the expected value. A bond length (or angle) with  $|Z| > 2$  is considered an outlier worth inspection. RMSZ is the root-mean-square of all Z scores of the bond lengths (or angles).

Mol	Type	Chain	Res	Link	Bond lengths			Bond angles		
					Counts	RMSZ	# Z  > 2	Counts	RMSZ	# Z  > 2
2	DDG	P	10	1,2	17,23,24	1.32	2 (11%)	15,33,36	2.91	6 (40%)

In the following table, the Chirals column lists the number of chiral outliers, the number of chiral centers analysed, the number of these observed in the model and the number defined in the Chemical Component Dictionary. Similar counts are reported in the Torsion and Rings columns. '-' means no outliers of that kind were identified.

Mol	Type	Chain	Res	Link	Chirals	Torsions	Rings
2	DDG	P	10	1,2	-	0/3/18/19	0/3/3/3

All (2) bond length outliers are listed below:

Mol	Chain	Res	Type	Atoms	Z	Observed(Å)	Ideal(Å)
2	P	10	DDG	C8-N7	-2.63	1.29	1.34
2	P	10	DDG	C6-N1	3.95	1.40	1.33

All (6) bond angle outliers are listed below:

Mol	Chain	Res	Type	Atoms	Z	Observed(°)	Ideal(°)
2	P	10	DDG	C5-C6-N1	-7.91	112.22	123.47
2	P	10	DDG	C2-N3-C4	-2.82	111.87	115.16
2	P	10	DDG	N3-C2-N1	-2.40	123.89	127.41
2	P	10	DDG	C6-C5-C4	-2.15	118.74	120.85
2	P	10	DDG	O4'-C1'-C2'	2.20	109.06	106.67
2	P	10	DDG	C6-N1-C2	5.73	124.31	116.06

There are no chirality outliers.

There are no torsion outliers.

There are no ring outliers.

No monomer is involved in short contacts.

## 5.5 Carbohydrates [i](#)

There are no carbohydrates in this entry.

## 5.6 Ligand geometry [i](#)

Of 18 ligands modelled in this entry, 16 are monoatomic - leaving 2 for Mogul analysis.

In the following table, the Counts columns list the number of bonds (or angles) for which Mogul statistics could be retrieved, the number of bonds (or angles) that are observed in the model and the number of bonds (or angles) that are defined in the Chemical Component Dictionary. The Link column lists molecule types, if any, to which the group is linked. The Z score for a bond length (or angle) is the number of standard deviations the observed value is removed from the expected value. A bond length (or angle) with  $|Z| > 2$  is considered an outlier worth inspection. RMSZ is the root-mean-square of all Z scores of the bond lengths (or angles).

Mol	Type	Chain	Res	Link	Bond lengths			Bond angles		
					Counts	RMSZ	# Z  > 2	Counts	RMSZ	# Z  > 2
8	CTP	A	338	5	23,30,30	0.79	0	26,47,47	0.91	0
8	CTP	A	350	5	23,30,30	0.82	0	26,47,47	1.13	2 (7%)

In the following table, the Chirals column lists the number of chiral outliers, the number of chiral centers analysed, the number of these observed in the model and the number defined in the Chemical Component Dictionary. Similar counts are reported in the Torsion and Rings columns. '-' means no outliers of that kind were identified.

Mol	Type	Chain	Res	Link	Chirals	Torsions	Rings
8	CTP	A	338	5	-	0/18/38/38	0/2/2/2
8	CTP	A	350	5	-	0/18/38/38	0/2/2/2

There are no bond length outliers.

All (2) bond angle outliers are listed below:

Mol	Chain	Res	Type	Atoms	Z	Observed(°)	Ideal(°)
8	A	350	CTP	PB-O3B-PG	-2.83	123.10	132.63
8	A	350	CTP	PB-O3A-PA	-2.48	124.29	132.63

There are no chirality outliers.

There are no torsion outliers.

There are no ring outliers.

1 monomer is involved in 2 short contacts:

Mol	Chain	Res	Type	Clashes	Symm-Clashes
8	A	350	CTP	2	0

## 5.7 Other polymers [i](#)

There are no such residues in this entry.

## 5.8 Polymer linkage issues [i](#)

There are no chain breaks in this entry.

## 6 Fit of model and data [i](#)

### 6.1 Protein, DNA and RNA chains [i](#)

In the following table, the column labelled ‘#RSRZ> 2’ contains the number (and percentage) of RSRZ outliers, followed by percent RSRZ outliers for the chain as percentile scores relative to all X-ray entries and entries of similar resolution. The OWAB column contains the minimum, median, 95<sup>th</sup> percentile and maximum values of the occupancy-weighted average B-factor per residue. The column labelled ‘Q< 0.9’ lists the number of (and percentage) of residues with an average occupancy less than 0.9.

Mol	Chain	Analysed	<RSRZ>	#RSRZ>2	OWAB(Å <sup>2</sup> )	Q<0.9
1	T	16/16 (100%)	-0.49	0 100 100	20, 27, 49, 52	0
2	P	9/10 (90%)	-0.32	0 100 100	21, 32, 41, 41	0
3	D	5/5 (100%)	-0.52	0 100 100	25, 25, 33, 33	0
4	A	326/335 (97%)	-0.04	12 (3%) 41 45	14, 25, 42, 56	0
All	All	356/366 (97%)	-0.07	12 (3%) 45 49	14, 25, 44, 56	0

All (12) RSRZ outliers are listed below:

Mol	Chain	Res	Type	RSRZ
4	A	302	GLY	4.1
4	A	303	VAL	4.0
4	A	304	THR	3.4
4	A	10	THR	3.0
4	A	193	VAL	2.7
4	A	208	PRO	2.4
4	A	257	ILE	2.3
4	A	309	GLU	2.2
4	A	246	ASP	2.2
4	A	301	LEU	2.2
4	A	69	ILE	2.1
4	A	194	LEU	2.1

### 6.2 Non-standard residues in protein, DNA, RNA chains [i](#)

In the following table, the Atoms column lists the number of modelled atoms in the group and the number defined in the chemical component dictionary. The B-factors column lists the minimum, median, 95<sup>th</sup> percentile and maximum values of B factors of atoms in the group. The column labelled ‘Q< 0.9’ lists the number of atoms with occupancy less than 0.9.

Mol	Type	Chain	Res	Atoms	RSCC	RSR	B-factors( $\text{\AA}^2$ )	Q<0.9
2	DDG	P	10	21/22	0.98	0.07	13,18,20,24	0

### 6.3 Carbohydrates [i](#)

There are no carbohydrates in this entry.

### 6.4 Ligands [i](#)

In the following table, the Atoms column lists the number of modelled atoms in the group and the number defined in the chemical component dictionary. The B-factors column lists the minimum, median, 95<sup>th</sup> percentile and maximum values of B factors of atoms in the group. The column labelled 'Q< 0.9' lists the number of atoms with occupancy less than 0.9.

Mol	Type	Chain	Res	Atoms	RSCC	RSR	B-factors( $\text{\AA}^2$ )	Q<0.9
5	MN	A	343	1/1	0.76	0.10	62,62,62,62	1
8	CTP	A	350	29/29	0.84	0.21	29,41,69,81	0
5	MN	A	342	1/1	0.88	0.06	66,66,66,66	1
5	MN	D	344	1/1	0.91	0.13	66,66,66,66	1
7	CL	A	358	1/1	0.92	0.13	61,61,61,61	0
7	CL	A	357	1/1	0.93	0.07	41,41,41,41	0
5	MN	A	346	1/1	0.93	0.08	39,39,39,39	1
7	CL	A	355	1/1	0.94	0.04	46,46,46,46	0
5	MN	P	345	1/1	0.95	0.05	33,33,33,33	1
7	CL	A	354	1/1	0.97	0.13	43,43,43,43	0
8	CTP	A	338	29/29	0.98	0.09	11,16,19,21	0
7	CL	A	353	1/1	0.98	0.06	38,38,38,38	0
6	NA	A	352	1/1	0.98	0.09	25,25,25,25	0
6	NA	A	351	1/1	0.98	0.07	18,18,18,18	0
7	CL	A	356	1/1	0.98	0.12	47,47,47,47	0
5	MN	A	339	1/1	0.99	0.05	17,17,17,17	0
5	MN	A	340	1/1	0.99	0.05	19,19,19,19	0
5	MN	A	341	1/1	0.99	0.04	32,32,32,32	0

### 6.5 Other polymers [i](#)

There are no such residues in this entry.