



Full wwPDB EM Validation Report ⓘ

Oct 13, 2024 – 01:37 PM EDT

PDB ID : 7RI4
EMDB ID : EMD-24473
Title : Structure of a BAM/EspP(beta9-12) hybrid-barrel intermediate
Authors : Wu, R.R.; Noinaj, N.
Deposited on : 2021-07-19
Resolution : 3.40 Å(reported)

This is a Full wwPDB EM Validation Report for a publicly released PDB entry.

We welcome your comments at validation@mail.wwpdb.org

A user guide is available at

<https://www.wwpdb.org/validation/2017/EMValidationReportHelp>

with specific help available everywhere you see the ⓘ symbol.

The types of validation reports are described at

<http://www.wwpdb.org/validation/2017/FAQs#types>.

The following versions of software and data (see [references ⓘ](#)) were used in the production of this report:

EMDB validation analysis : 0.0.1.dev113
MolProbity : 4.02b-467
Percentile statistics : 20231227.v01 (using entries in the PDB archive December 27th 2023)
MapQ : 1.9.13
Ideal geometry (proteins) : Engh & Huber (2001)
Ideal geometry (DNA, RNA) : Parkinson et al. (1996)
Validation Pipeline (wwPDB-VP) : 2.39

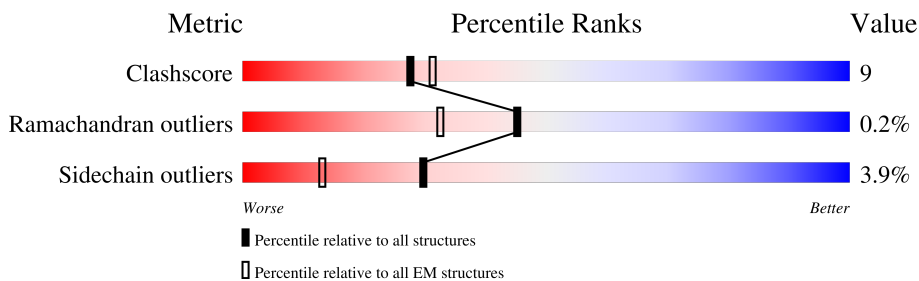
1 Overall quality at a glance i

The following experimental techniques were used to determine the structure:

ELECTRON MICROSCOPY

The reported resolution of this entry is 3.40 Å.

Percentile scores (ranging between 0-100) for global validation metrics of the entry are shown in the following graphic. The table shows the number of entries on which the scores are based.



Metric	Whole archive (#Entries)	EM structures (#Entries)
Clashscore	210492	15764
Ramachandran outliers	207382	16835
Sidechain outliers	206894	16415

The table below summarises the geometric issues observed across the polymeric chains and their fit to the map. The red, orange, yellow and green segments of the bar indicate the fraction of residues that contain outliers for ≥ 3 , 2, 1 and 0 types of geometric quality criteria respectively. A grey segment represents the fraction of residues that are not modelled. The numeric value for each fraction is indicated below the corresponding segment, with a dot representing fractions $\leq 5\%$. The upper red bar (where present) indicates the fraction of residues that have poor fit to the EM map (all-atom inclusion $< 40\%$). The numeric value is given above the bar.

Mol	Chain	Length	Quality of chain
1	G	83	
2	A	810	
3	B	371	
4	C	344	
5	D	245	
6	E	123	

2 Entry composition i

There are 6 unique types of molecules in this entry. The entry contains 12248 atoms, of which 0 are hydrogens and 0 are deuteriums.

In the tables below, the AltConf column contains the number of residues with at least one atom in alternate conformation and the Trace column contains the number of residues modelled with at most 2 atoms.

- Molecule 1 is a protein called EspPbeta9-12.

Mol	Chain	Residues	Atoms					AltConf	Trace
			Total	C	N	O	S		
1	G	54	434	277	78	76	3	0	0

- Molecule 2 is a protein called Outer membrane protein assembly factor BamA.

Mol	Chain	Residues	Atoms					AltConf	Trace
			Total	C	N	O	S		
2	A	783	6189	3904	1045	1223	17	0	0

There is a discrepancy between the modelled and reference sequences:

Chain	Residue	Modelled	Actual	Comment	Reference
A	806	CYS	ILE	conflict	UNP P0A940

- Molecule 3 is a protein called Outer membrane protein assembly factor BamB.

Mol	Chain	Residues	Atoms					AltConf	Trace
			Total	C	N	O	S		
3	B	371	2733	1711	469	547	6	0	0

- Molecule 4 is a protein called Outer membrane protein assembly factor BamC.

Mol	Chain	Residues	Atoms					AltConf	Trace
			Total	C	N	O	S		
4	C	61	437	277	74	85	1	0	0

- Molecule 5 is a protein called Outer membrane protein assembly factor BamD.

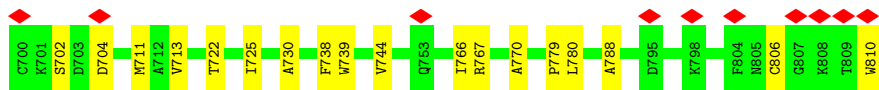
Mol	Chain	Residues	Atoms					AltConf	Trace
			Total	C	N	O	S		
5	D	220	1760	1107	310	336	7	0	0

- Molecule 6 is a protein called Outer membrane protein assembly factor BamE.

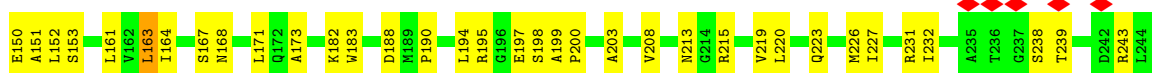
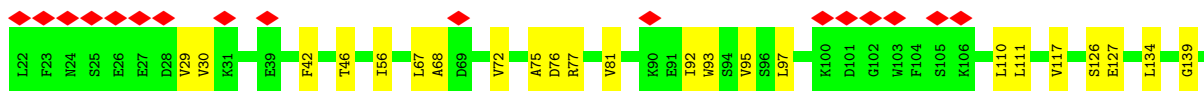
Mol	Chain	Residues	Atoms					AltConf	Trace
			Total	C	N	O	S		
6	E	89	695	437	121	135	2	0	0

There are 10 discrepancies between the modelled and reference sequences:

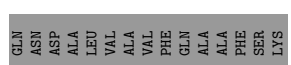
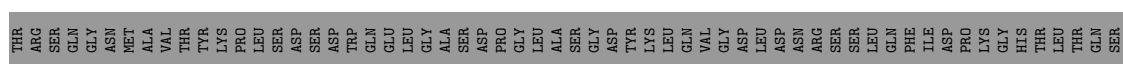
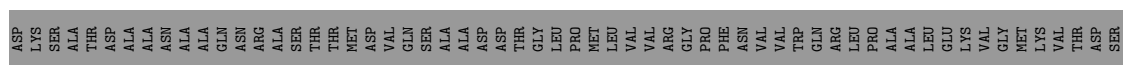
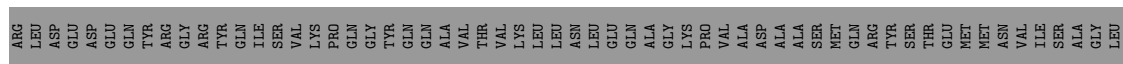
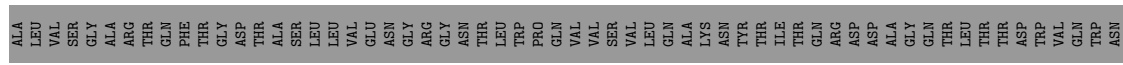
Chain	Residue	Modelled	Actual	Comment	Reference
E	114	GLY	-	expression tag	UNP A0A3L5AP29
E	115	GLY	-	expression tag	UNP A0A3L5AP29
E	116	HIS	-	expression tag	UNP A0A3L5AP29
E	117	HIS	-	expression tag	UNP A0A3L5AP29
E	118	HIS	-	expression tag	UNP A0A3L5AP29
E	119	HIS	-	expression tag	UNP A0A3L5AP29
E	120	HIS	-	expression tag	UNP A0A3L5AP29
E	121	HIS	-	expression tag	UNP A0A3L5AP29
E	122	HIS	-	expression tag	UNP A0A3L5AP29
E	123	HIS	-	expression tag	UNP A0A3L5AP29



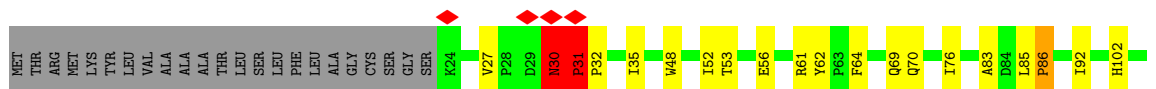
• Molecule 3: Outer membrane protein assembly factor BamB

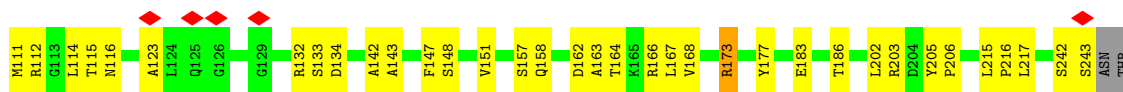


• Molecule 4: Outer membrane protein assembly factor BamC

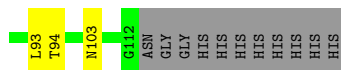
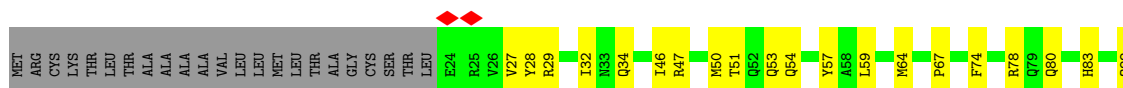


• Molecule 5: Outer membrane protein assembly factor BamD





- Molecule 6: Outer membrane protein assembly factor BamE



4 Experimental information

Property	Value	Source
EM reconstruction method	SINGLE PARTICLE	Depositor
Imposed symmetry	POINT, Not provided	
Number of particles used	149420	Depositor
Resolution determination method	FSC 0.143 CUT-OFF	Depositor
CTF correction method	NONE	Depositor
Microscope	FEI TITAN KRIOS	Depositor
Voltage (kV)	300	Depositor
Electron dose ($e^-/\text{\AA}^2$)	44.77	Depositor
Minimum defocus (nm)	Not provided	
Maximum defocus (nm)	Not provided	
Magnification	Not provided	
Image detector	GATAN K3 (6k x 4k)	Depositor
Maximum map value	3.057	Depositor
Minimum map value	-1.532	Depositor
Average map value	0.005	Depositor
Map value standard deviation	0.077	Depositor
Recommended contour level	0.5	Depositor
Map size (\AA)	276.48, 276.48, 276.48	wwPDB
Map dimensions	256, 256, 256	wwPDB
Map angles ($^\circ$)	90.0, 90.0, 90.0	wwPDB
Pixel spacing (\AA)	1.08, 1.08, 1.08	Depositor

5 Model quality [i](#)

5.1 Standard geometry [i](#)

The Z score for a bond length (or angle) is the number of standard deviations the observed value is removed from the expected value. A bond length (or angle) with $|Z| > 5$ is considered an outlier worth inspection. RMSZ is the root-mean-square of all Z scores of the bond lengths (or angles).

Mol	Chain	Bond lengths		Bond angles	
		RMSZ	# Z >5	RMSZ	# Z >5
1	G	0.26	0/441	0.58	1/590 (0.2%)
2	A	0.25	0/6331	0.48	0/8586
3	B	0.24	0/2780	0.52	0/3799
4	C	0.25	0/447	0.45	0/612
5	D	0.25	0/1800	0.43	0/2448
6	E	0.25	0/710	0.48	0/968
All	All	0.25	0/12509	0.48	1/17003 (0.0%)

Chiral center outliers are detected by calculating the chiral volume of a chiral center and verifying if the center is modelled as a planar moiety or with the opposite hand. A planarity outlier is detected by checking planarity of atoms in a peptide group, atoms in a mainchain group or atoms of a sidechain that are expected to be planar.

Mol	Chain	#Chirality outliers	#Planarity outliers
5	D	0	2

There are no bond length outliers.

All (1) bond angle outliers are listed below:

Mol	Chain	Res	Type	Atoms	Z	Observed($^{\circ}$)	Ideal($^{\circ}$)
1	G	1259	LEU	CA-CB-CG	6.62	130.52	115.30

There are no chirality outliers.

All (2) planarity outliers are listed below:

Mol	Chain	Res	Type	Group
5	D	30	ASN	Peptide
5	D	31	PRO	Peptide

5.2 Too-close contacts [i](#)

In the following table, the Non-H and H(model) columns list the number of non-hydrogen atoms and hydrogen atoms in the chain respectively. The H(added) column lists the number of hydrogen atoms added and optimized by MolProbity. The Clashes column lists the number of clashes within the asymmetric unit, whereas Symm-Clashes lists symmetry-related clashes.

Mol	Chain	Non-H	H(model)	H(added)	Clashes	Symm-Clashes
1	G	434	0	417	15	0
2	A	6189	0	5898	97	0
3	B	2733	0	2637	73	0
4	C	437	0	434	10	0
5	D	1760	0	1679	34	0
6	E	695	0	674	12	0
All	All	12248	0	11739	227	0

The all-atom clashscore is defined as the number of clashes found per 1000 atoms (including hydrogen atoms). The all-atom clashscore for this structure is 9.

All (227) close contacts within the same asymmetric unit are listed below, sorted by their clash magnitude.

Atom-1	Atom-2	Interatomic distance (Å)	Clash overlap (Å)
2:A:424:GLY:HA2	2:A:446:GLN:HA	1.63	0.80
3:B:303:ASP:HB3	3:B:327:LEU:HD12	1.70	0.74
1:G:1261:SER:HB2	1:G:1277:GLU:HB3	1.69	0.74
2:A:684:PRO:HB2	2:A:687:ASP:HB3	1.69	0.73
3:B:245:SER:HA	3:B:263:TYR:HB3	1.71	0.73
1:G:1260:MET:HG3	1:G:1280:LYS:HB3	1.69	0.73
1:G:1298:TYR:HB3	2:A:426:PHE:HB3	1.74	0.70
4:C:52:ALA:HB2	4:C:58:LEU:HG	1.73	0.70
2:A:102:ASN:ND2	2:A:105:VAL:O	2.25	0.70
4:C:61:THR:HG21	5:D:206:PRO:HG3	1.73	0.70
3:B:190:PRO:HG3	3:B:213:ASN:HB3	1.74	0.69
1:G:1267:GLU:HB3	1:G:1273:ARG:HG2	1.75	0.67
2:A:232:ASP:HA	2:A:298:GLY:H	1.60	0.67
2:A:234:GLY:HA2	2:A:296:TYR:HB3	1.77	0.66
2:A:634:ARG:HB2	2:A:713:VAL:HG22	1.78	0.66
2:A:668:ILE:HG23	2:A:767:ARG:HD2	1.78	0.65
3:B:260:ALA:N	3:B:268:THR:OG1	2.27	0.65
2:A:692:THR:HG22	2:A:693:GLN:H	1.62	0.63
6:E:64:MET:HG3	6:E:74:PHE:HB2	1.79	0.63
2:A:35:GLN:HE22	2:A:161:ASN:HD22	1.47	0.63
2:A:67:PHE:HA	2:A:73:GLU:HG2	1.81	0.63

Continued on next page...

Continued from previous page...

Atom-1	Atom-2	Interatomic distance (Å)	Clash overlap (Å)
3:B:291:VAL:HG22	3:B:296:ILE:HG12	1.81	0.62
3:B:161:LEU:HD12	3:B:173:ALA:HB1	1.82	0.61
3:B:75:ALA:HA	3:B:81:VAL:HG12	1.83	0.61
3:B:198:SER:HB3	3:B:248:ASP:HA	1.83	0.60
2:A:611:VAL:HG23	2:A:636:GLY:HA2	1.84	0.60
3:B:309:THR:HB	3:B:315:THR:H	1.67	0.59
3:B:171:LEU:HD11	3:B:200:PRO:HG3	1.84	0.59
2:A:110:LEU:HD23	2:A:137:LEU:HD11	1.84	0.59
3:B:29:VAL:HG13	3:B:30:VAL:HG13	1.85	0.58
2:A:350:ARG:O	2:A:350:ARG:NE	2.33	0.58
1:G:1266:ALA:HB3	1:G:1274:PHE:HB2	1.84	0.58
3:B:56:ILE:HG22	3:B:77:ARG:HD2	1.86	0.57
2:A:538:ASN:HA	2:A:561:GLN:HE22	1.69	0.57
5:D:53:THR:HA	5:D:56:GLU:HG2	1.86	0.57
2:A:594:ASN:C	2:A:594:ASN:HD22	2.08	0.57
3:B:327:LEU:HD22	3:B:339:VAL:HG22	1.87	0.57
3:B:163:LEU:HA	3:B:173:ALA:HA	1.87	0.56
3:B:286:VAL:HB	3:B:300:ASP:HA	1.87	0.56
2:A:322:VAL:HG13	2:A:341:VAL:HG12	1.88	0.56
3:B:111:LEU:HA	3:B:126:SER:HA	1.88	0.56
2:A:653:TYR:HB3	2:A:666:ASN:HB2	1.87	0.56
2:A:207:ASN:HA	2:A:779:PRO:HD3	1.88	0.56
2:A:59:ILE:O	2:A:63:ILE:HG12	2.06	0.56
3:B:327:LEU:HA	3:B:341:ASP:HA	1.88	0.55
2:A:683:ASP:HB3	2:A:693:GLN:HB3	1.88	0.55
2:A:97:ILE:HG22	2:A:165:LEU:HD11	1.88	0.55
2:A:364:VAL:HA	2:A:367:ARG:HD3	1.89	0.55
6:E:50:MET:HG3	6:E:51:THR:H	1.72	0.55
3:B:368:GLN:HB2	3:B:383:LYS:HE2	1.89	0.55
2:A:24:PHE:HB2	2:A:79:ARG:HH21	1.72	0.55
3:B:268:THR:HG22	3:B:270:LEU:HD13	1.89	0.55
3:B:269:ALA:HB1	3:B:278:MET:HB2	1.88	0.55
2:A:321:ARG:HB3	2:A:342:ASP:O	2.07	0.54
2:A:170:GLN:HG2	3:B:29:VAL:HG23	1.89	0.54
1:G:1224:ARG:NH1	1:G:1277:GLU:OE1	2.41	0.54
1:G:1265:ASN:HB3	1:G:1273:ARG:HD3	1.90	0.54
3:B:219:VAL:HA	3:B:226:MET:HA	1.90	0.54
2:A:398:VAL:HG13	2:A:418:VAL:HG12	1.89	0.53
2:A:404:ARG:HD3	2:A:412:VAL:HG12	1.90	0.53
3:B:285:SER:H	3:B:300:ASP:HB3	1.73	0.53
5:D:31:PRO:N	5:D:32:PRO:HD3	2.24	0.53

Continued on next page...

Continued from previous page...

Atom-1	Atom-2	Interatomic distance (Å)	Clash overlap (Å)
2:A:47:PRO:HD2	2:A:62:THR:HG22	1.90	0.53
3:B:220:LEU:HD13	3:B:227:ILE:HD11	1.91	0.53
3:B:284:GLY:HA3	3:B:298:LEU:HD22	1.90	0.53
3:B:72:VAL:HG21	3:B:379:LEU:HG	1.91	0.53
1:G:1280:LYS:HG2	1:G:1288:VAL:HB	1.91	0.53
2:A:266:TYR:HD2	2:A:333:LYS:HA	1.74	0.52
3:B:110:LEU:HB2	3:B:127:GLU:HB2	1.89	0.52
5:D:85:LEU:HB3	5:D:86:PRO:HD2	1.91	0.52
2:A:63:ILE:HG23	2:A:75:VAL:HG21	1.90	0.52
5:D:111:MET:O	5:D:115:THR:HG23	2.10	0.52
6:E:46:ILE:HD11	6:E:59:LEU:HD11	1.92	0.52
3:B:284:GLY:HA2	3:B:300:ASP:HB3	1.90	0.52
3:B:182:LYS:HG2	3:B:183:TRP:HD1	1.75	0.52
3:B:220:LEU:HD23	3:B:223:GLN:HE22	1.74	0.52
5:D:186:THR:HG21	5:D:217:LEU:HD11	1.92	0.52
2:A:678:GLN:NE2	2:A:696:ALA:O	2.42	0.51
3:B:249:THR:OG1	3:B:250:THR:N	2.42	0.51
6:E:34:GLN:NE2	6:E:34:GLN:HA	2.26	0.51
2:A:244:GLN:NE2	3:B:168:ASN:OD1	2.43	0.51
2:A:581:LEU:HD22	2:A:587:PRO:HB3	1.92	0.51
4:C:85:PRO:HB2	4:C:88:PRO:HB3	1.90	0.51
2:A:72:PHE:HB2	2:A:91:ARG:HD3	1.92	0.51
2:A:74:ASP:H	2:A:88:VAL:HG23	1.76	0.51
2:A:91:ARG:HG2	2:A:93:THR:HG22	1.93	0.51
3:B:331:VAL:HG11	3:B:378:LEU:HD11	1.93	0.51
2:A:77:VAL:HG22	2:A:86:VAL:HG23	1.92	0.51
4:C:61:THR:HG22	5:D:203:ARG:HA	1.92	0.51
2:A:244:GLN:HG2	2:A:257:THR:HB	1.92	0.51
2:A:477:TYR:HD1	2:A:480:VAL:HG23	1.75	0.51
2:A:222:ASP:HA	2:A:225:THR:HG22	1.93	0.51
5:D:116:ASN:ND2	5:D:142:ALA:O	2.44	0.51
5:D:116:ASN:HB3	5:D:143:ALA:HB2	1.92	0.50
2:A:445:GLN:HG3	2:A:446:GLN:H	1.76	0.50
2:A:129:THR:O	2:A:133:ILE:HG12	2.11	0.50
2:A:115:GLU:HG2	2:A:120:ARG:HG3	1.93	0.50
3:B:271:ASP:H	3:B:275:GLY:HA2	1.76	0.50
2:A:100:SER:OG	2:A:101:GLY:N	2.44	0.50
5:D:157:SER:OG	5:D:158:GLN:N	2.45	0.50
2:A:711:MET:HG3	2:A:744:VAL:HG22	1.94	0.49
5:D:162:ASP:OD2	5:D:166:ARG:NH1	2.40	0.49
2:A:115:GLU:HA	2:A:120:ARG:HB2	1.94	0.49

Continued on next page...

Continued from previous page...

Atom-1	Atom-2	Interatomic distance (Å)	Clash overlap (Å)
6:E:27:VAL:HG13	6:E:28:TYR:H	1.76	0.49
6:E:94:THR:HG22	6:E:103:ASN:HB3	1.94	0.49
1:G:1290:ASN:HB3	2:A:434:THR:HB	1.94	0.49
5:D:27:VAL:HB	5:D:35:ILE:HD11	1.94	0.49
3:B:238:SER:OG	3:B:239:THR:N	2.44	0.49
3:B:151:ALA:HB1	3:B:164:ILE:HD11	1.95	0.49
6:E:32:ILE:O	6:E:80:GLN:N	2.39	0.49
2:A:58:ASP:O	2:A:62:THR:HG23	2.12	0.49
2:A:140:PHE:O	2:A:144:VAL:HG23	2.13	0.49
2:A:251:LYS:H	2:A:251:LYS:HD2	1.78	0.49
3:B:331:VAL:HG13	3:B:373:ALA:HB2	1.93	0.49
2:A:287:LEU:HD21	2:A:307:ASP:HB3	1.94	0.48
6:E:78:ARG:HB2	6:E:88:GLN:HG3	1.95	0.48
2:A:160:ARG:NH2	5:D:62:TYR:OH	2.46	0.48
2:A:120:ARG:NH2	2:A:121:VAL:O	2.46	0.48
3:B:368:GLN:O	3:B:368:GLN:NE2	2.41	0.48
2:A:542:GLN:HG3	2:A:545:MET:HG2	1.96	0.48
3:B:337:LEU:HB3	3:B:349:ILE:HB	1.95	0.48
2:A:739:TRP:HD1	2:A:770:ALA:HB2	1.80	0.47
4:C:59:PRO:HG3	6:E:67:PRO:HB2	1.97	0.47
2:A:474:THR:HA	2:A:486:GLY:HA2	1.95	0.47
5:D:92:ILE:HG21	5:D:112:ARG:HB2	1.97	0.47
5:D:242:SER:OG	5:D:243:SER:N	2.47	0.47
2:A:36:ARG:HD3	5:D:64:PHE:CD1	2.50	0.47
2:A:381:LEU:HA	2:A:384:GLN:HG2	1.96	0.47
6:E:51:THR:HG23	6:E:54:GLN:H	1.79	0.47
1:G:1261:SER:HA	1:G:1278:PHE:H	1.80	0.47
3:B:97:LEU:HD22	3:B:134:LEU:HD21	1.97	0.46
3:B:247:VAL:HG21	3:B:260:ALA:HB1	1.97	0.46
5:D:30:ASN:HB2	5:D:31:PRO:CD	2.46	0.46
5:D:123:ALA:H	5:D:132:ARG:HH11	1.63	0.46
5:D:133:SER:O	5:D:173:ARG:NH1	2.47	0.46
3:B:302:ASN:O	3:B:304:ARG:N	2.47	0.46
3:B:215:ARG:CZ	3:B:231:ARG:HE	2.29	0.46
3:B:194:LEU:O	3:B:195:ARG:HG2	2.16	0.46
3:B:152:LEU:HD22	3:B:167:SER:HB2	1.98	0.46
3:B:208:VAL:HG11	3:B:258:VAL:HG11	1.98	0.46
6:E:51:THR:HG23	6:E:53:GLN:H	1.81	0.46
3:B:76:ASP:OD2	3:B:77:ARG:N	2.48	0.46
5:D:76:ILE:HD13	5:D:92:ILE:HG12	1.96	0.46
2:A:64:ARG:HA	2:A:64:ARG:HD3	1.81	0.45

Continued on next page...

Continued from previous page...

Atom-1	Atom-2	Interatomic distance (Å)	Clash overlap (Å)
2:A:392:LEU:HD23	2:A:395:PHE:HE1	1.81	0.45
2:A:439:SER:HA	2:A:463:ASN:HA	1.97	0.45
2:A:564:SER:OG	2:A:565:PHE:N	2.50	0.45
1:G:1291:ALA:HA	2:A:434:THR:HG21	1.99	0.45
2:A:600:THR:O	2:A:600:THR:OG1	2.33	0.45
3:B:203:ALA:HB2	3:B:253:VAL:HG11	1.99	0.45
1:G:1258:MET:O	1:G:1259:LEU:HD22	2.17	0.45
5:D:163:ALA:O	5:D:167:LEU:HG	2.17	0.45
3:B:188:ASP:HB2	3:B:213:ASN:HD21	1.82	0.44
6:E:29:ARG:HB2	6:E:83:HIS:CE1	2.52	0.44
2:A:675:PHE:O	2:A:677:HIS:N	2.50	0.44
3:B:331:VAL:HB	3:B:338:VAL:HB	1.99	0.44
2:A:177:ILE:H	2:A:212:ARG:HB3	1.82	0.44
1:G:1268:ILE:HG13	1:G:1269:ARG:H	1.81	0.44
5:D:134:ASP:HA	5:D:177:TYR:HD1	1.83	0.44
3:B:127:GLU:HA	3:B:150:GLU:HB2	2.00	0.44
5:D:164:THR:O	5:D:168:VAL:HG23	2.17	0.44
3:B:300:ASP:C	3:B:302:ASN:H	2.21	0.43
3:B:260:ALA:H	3:B:268:THR:HG1	1.55	0.43
2:A:259:ASN:HD21	3:B:168:ASN:HD21	1.66	0.43
2:A:674:TYR:HE1	2:A:702:SER:HB2	1.83	0.43
2:A:522:TYR:O	2:A:523:ASN:ND2	2.51	0.43
2:A:639:ASP:OD2	2:A:640:GLY:N	2.52	0.43
3:B:195:ARG:HB3	3:B:197:GLU:OE2	2.19	0.43
5:D:147:PHE:HB3	5:D:167:LEU:HD21	1.99	0.43
2:A:106:LYS:HA	2:A:106:LYS:HD2	1.75	0.43
2:A:542:GLN:HB3	2:A:674:TYR:CE2	2.54	0.43
3:B:153:SER:HB2	3:B:199:ALA:HB2	2.00	0.43
2:A:361:LYS:O	2:A:364:VAL:HG12	2.18	0.43
4:C:78:LYS:HD2	4:C:78:LYS:HA	1.80	0.43
4:C:88:PRO:HD3	5:D:70:GLN:HG3	2.00	0.43
2:A:581:LEU:HD23	2:A:581:LEU:HA	1.89	0.43
2:A:725:ILE:HD11	2:A:730:ALA:HA	2.01	0.42
2:A:674:TYR:CE1	2:A:702:SER:HB2	2.54	0.42
3:B:347:HIS:CD2	3:B:347:HIS:H	2.36	0.42
2:A:672:ALA:O	2:A:702:SER:HB3	2.20	0.42
4:C:89:LEU:HD23	4:C:89:LEU:HA	1.88	0.42
5:D:48:TRP:O	5:D:52:ILE:HG13	2.20	0.42
5:D:114:LEU:HD12	5:D:114:LEU:HA	1.91	0.42
3:B:92:ILE:HG22	3:B:93:TRP:HD1	1.85	0.42
3:B:296:ILE:HG22	3:B:298:LEU:HD11	2.01	0.42

Continued on next page...

Continued from previous page...

Atom-1	Atom-2	Interatomic distance (Å)	Clash overlap (Å)
5:D:215:LEU:HB2	5:D:216:PRO:HD3	2.01	0.42
3:B:290:ILE:HG13	3:B:330:PRO:HG2	2.00	0.42
3:B:326:LEU:O	3:B:342:SER:N	2.53	0.42
5:D:183:GLU:O	5:D:186:THR:HG22	2.20	0.42
2:A:87:GLN:HB3	2:A:89:LYS:HZ3	1.84	0.42
3:B:232:ILE:HD13	3:B:247:VAL:HB	2.02	0.42
2:A:166:LYS:HE2	2:A:166:LYS:HB3	1.69	0.42
2:A:514:THR:HA	2:A:528:GLY:HA3	2.02	0.42
4:C:59:PRO:HG2	5:D:202:LEU:HD23	2.02	0.42
5:D:123:ALA:H	5:D:132:ARG:NH1	2.18	0.42
1:G:1295:ASN:HD22	1:G:1297:ARG:HG2	1.85	0.42
2:A:158:LEU:HD12	2:A:162:ARG:HB3	2.02	0.41
3:B:261:LEU:HB2	3:B:289:PHE:HD1	1.85	0.41
2:A:365:LEU:HD11	2:A:395:PHE:HZ	1.84	0.41
2:A:766:ILE:H	2:A:766:ILE:HD12	1.85	0.41
2:A:477:TYR:CD1	2:A:480:VAL:HG23	2.55	0.41
2:A:35:GLN:HE22	2:A:161:ASN:ND2	2.14	0.41
2:A:131:ALA:O	2:A:135:LYS:HG2	2.20	0.41
2:A:321:ARG:HE	2:A:323:GLN:NE2	2.18	0.41
2:A:388:ARG:HE	2:A:388:ARG:HB3	1.72	0.41
2:A:421:ARG:HG2	2:A:421:ARG:O	2.20	0.41
2:A:562:ASP:N	2:A:562:ASP:OD2	2.52	0.41
3:B:283:LEU:HD12	3:B:283:LEU:H	1.85	0.41
2:A:738:PHE:HZ	2:A:788:ALA:HB2	1.84	0.41
3:B:68:ALA:HB2	3:B:117:VAL:HG11	2.02	0.41
4:C:35:VAL:HG21	5:D:83:ALA:HB2	2.02	0.41
3:B:67:LEU:HD13	3:B:374:ALA:HB3	2.03	0.41
2:A:73:GLU:H	2:A:91:ARG:NH1	2.19	0.41
2:A:683:ASP:HA	2:A:684:PRO:HD3	1.88	0.41
3:B:95:VAL:HG11	3:B:139:GLY:HA3	2.01	0.41
2:A:130:ILE:H	2:A:130:ILE:HG13	1.72	0.41
2:A:536:LEU:H	2:A:536:LEU:HD22	1.86	0.41
3:B:261:LEU:HB2	3:B:289:PHE:CD1	2.56	0.41
3:B:333:TYR:CD1	3:B:378:LEU:HD13	2.56	0.41
3:B:348:TRP:N	3:B:358:ALA:O	2.53	0.41
3:B:371:PRO:HG3	3:B:380:ILE:HD12	2.02	0.41
5:D:27:VAL:HG23	5:D:61:ARG:HH22	1.85	0.40
1:G:1296:PHE:CE1	1:G:1298:TYR:HB2	2.56	0.40
3:B:198:SER:O	3:B:198:SER:OG	2.33	0.40
3:B:259:PHE:HB2	3:B:289:PHE:CE2	2.56	0.40
5:D:148:SER:HA	5:D:151:VAL:HG12	2.02	0.40

Continued on next page...

Continued from previous page...

Atom-1	Atom-2	Interatomic distance (Å)	Clash overlap (Å)
2:A:592:ARG:CZ	2:A:810:TRP:HE1	2.34	0.40

There are no symmetry-related clashes.

5.3 Torsion angles [i](#)

5.3.1 Protein backbone [i](#)

In the following table, the Percentiles column shows the percent Ramachandran outliers of the chain as a percentile score with respect to all PDB entries followed by that with respect to all EM entries.

The Analysed column shows the number of residues for which the backbone conformation was analysed, and the total number of residues.

Mol	Chain	Analysed	Favoured	Allowed	Outliers	Percentiles	
1	G	50/83 (60%)	39 (78%)	11 (22%)	0	100	100
2	A	777/810 (96%)	678 (87%)	99 (13%)	0	100	100
3	B	369/371 (100%)	299 (81%)	70 (19%)	0	100	100
4	C	59/344 (17%)	52 (88%)	7 (12%)	0	100	100
5	D	218/245 (89%)	197 (90%)	18 (8%)	3 (1%)	9	31
6	E	87/123 (71%)	76 (87%)	11 (13%)	0	100	100
All	All	1560/1976 (79%)	1341 (86%)	216 (14%)	3 (0%)	45	72

All (3) Ramachandran outliers are listed below:

Mol	Chain	Res	Type
5	D	31	PRO
5	D	30	ASN
5	D	86	PRO

5.3.2 Protein sidechains [i](#)

In the following table, the Percentiles column shows the percent sidechain outliers of the chain as a percentile score with respect to all PDB entries followed by that with respect to all EM entries.

The Analysed column shows the number of residues for which the sidechain conformation was analysed, and the total number of residues.

Mol	Chain	Analysed	Rotameric	Outliers	Percentiles	
1	G	43/45 (96%)	41 (95%)	2 (5%)	22	49
2	A	666/688 (97%)	643 (96%)	23 (4%)	31	56
3	B	287/302 (95%)	274 (96%)	13 (4%)	23	50
4	C	44/276 (16%)	40 (91%)	4 (9%)	7	26
5	D	180/204 (88%)	175 (97%)	5 (3%)	38	62
6	E	77/103 (75%)	74 (96%)	3 (4%)	27	53
All	All	1297/1618 (80%)	1247 (96%)	50 (4%)	30	53

All (50) residues with a non-rotameric sidechain are listed below:

Mol	Chain	Res	Type
1	G	1259	LEU
1	G	1290	ASN
2	A	49	ARG
2	A	53	THR
2	A	91	ARG
2	A	156	THR
2	A	167	LEU
2	A	230	TYR
2	A	247	LEU
2	A	350	ARG
2	A	370	ARG
2	A	394	PHE
2	A	536	LEU
2	A	549	LEU
2	A	550	TYR
2	A	576	TRP
2	A	586	PHE
2	A	594	ASN
2	A	637	TYR
2	A	661	ARG
2	A	667	THR
2	A	704	ASP
2	A	722	THR
2	A	780	LEU
2	A	806	CYS
3	B	42	PHE
3	B	46	THR
3	B	163	LEU
3	B	243	ARG
3	B	266	ASN

Continued on next page...

Continued from previous page...

Mol	Chain	Res	Type
3	B	267	LEU
3	B	268	THR
3	B	286	VAL
3	B	300	ASP
3	B	311	ASP
3	B	353	ASP
3	B	368	GLN
3	B	386	THR
4	C	43	GLU
4	C	67	ILE
4	C	69	VAL
4	C	76	VAL
5	D	30	ASN
5	D	69	GLN
5	D	102	HIS
5	D	173	ARG
5	D	205	TYR
6	E	47	ARG
6	E	57	TYR
6	E	93	LEU

Sometimes sidechains can be flipped to improve hydrogen bonding and reduce clashes. All (5) such sidechains are listed below:

Mol	Chain	Res	Type
2	A	35	GLN
2	A	259	ASN
2	A	561	GLN
3	B	223	GLN
5	D	89	GLN

5.3.3 RNA [i](#)

There are no RNA molecules in this entry.

5.4 Non-standard residues in protein, DNA, RNA chains [i](#)

There are no non-standard protein/DNA/RNA residues in this entry.

5.5 Carbohydrates [i](#)

There are no oligosaccharides in this entry.

5.6 Ligand geometry [i](#)

There are no ligands in this entry.

5.7 Other polymers [i](#)

There are no such residues in this entry.

5.8 Polymer linkage issues [i](#)

The following chains have linkage breaks:

Mol	Chain	Number of breaks
2	A	1

All chain breaks are listed below:

Model	Chain	Residue-1	Atom-1	Residue-2	Atom-2	Distance (Å)
1	A	93:THR	C	94:ILE	N	6.43

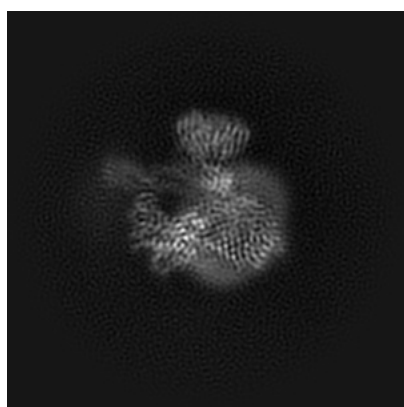
6 Map visualisation [i](#)

This section contains visualisations of the EMDB entry EMD-24473. These allow visual inspection of the internal detail of the map and identification of artifacts.

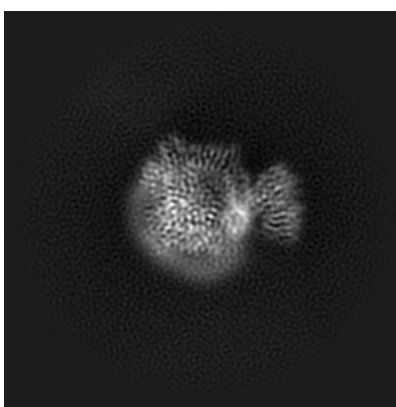
No raw map or half-maps were deposited for this entry and therefore no images, graphs, etc. pertaining to the raw map can be shown.

6.1 Orthogonal projections [i](#)

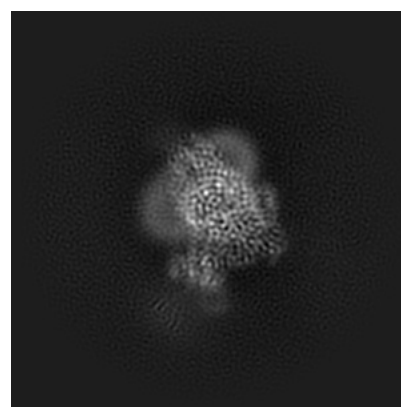
6.1.1 Primary map



X



Y

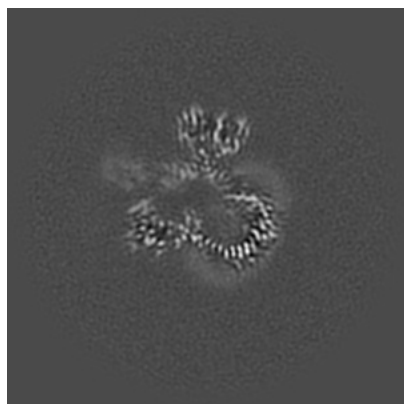


Z

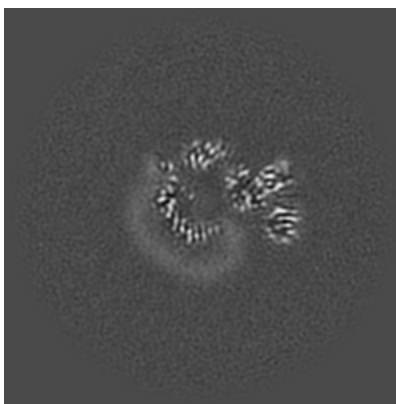
The images above show the map projected in three orthogonal directions.

6.2 Central slices [i](#)

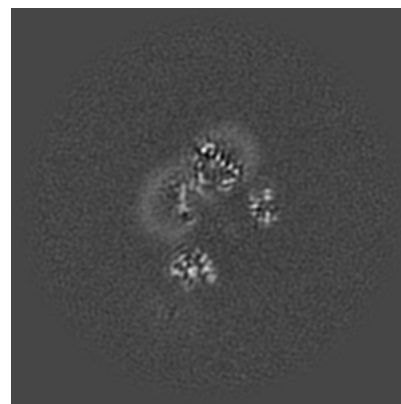
6.2.1 Primary map



X Index: 128



Y Index: 128

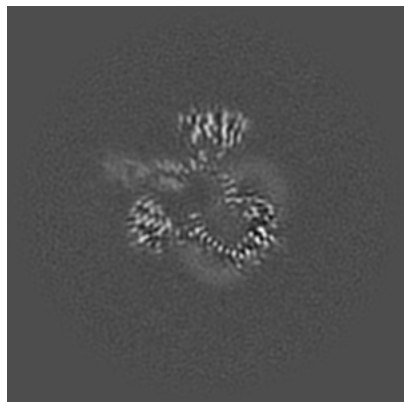


Z Index: 128

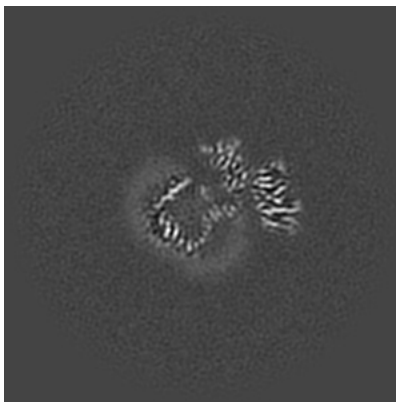
The images above show central slices of the map in three orthogonal directions.

6.3 Largest variance slices [i](#)

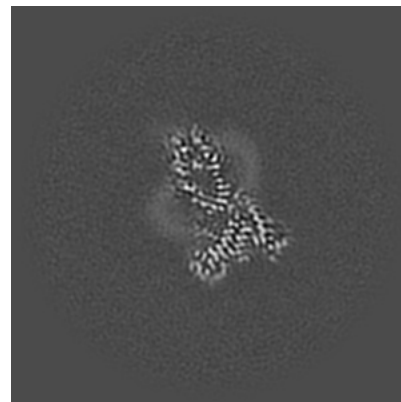
6.3.1 Primary map



X Index: 125



Y Index: 139

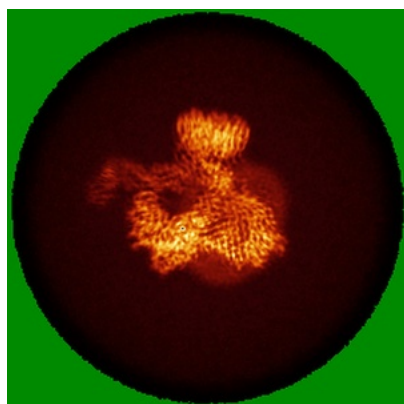


Z Index: 105

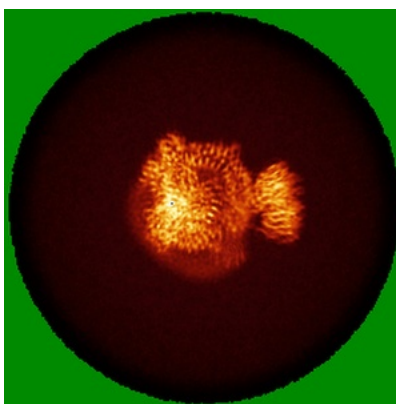
The images above show the largest variance slices of the map in three orthogonal directions.

6.4 Orthogonal standard-deviation projections (False-color) [i](#)

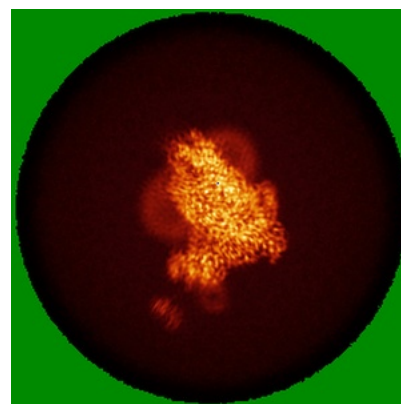
6.4.1 Primary map



X



Y

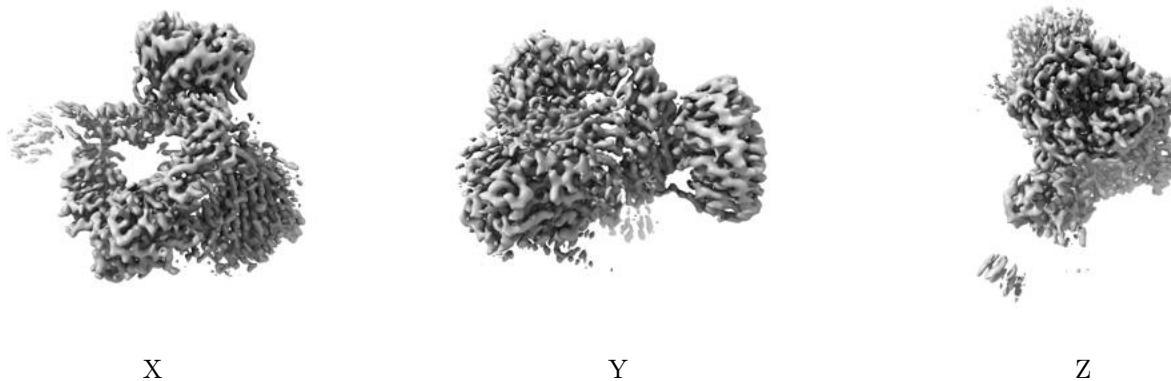


Z

The images above show the map standard deviation projections with false color in three orthogonal directions. Minimum values are shown in green, max in blue, and dark to light orange shades represent small to large values respectively.

6.5 Orthogonal surface views [i](#)

6.5.1 Primary map



The images above show the 3D surface view of the map at the recommended contour level 0.5. These images, in conjunction with the slice images, may facilitate assessment of whether an appropriate contour level has been provided.

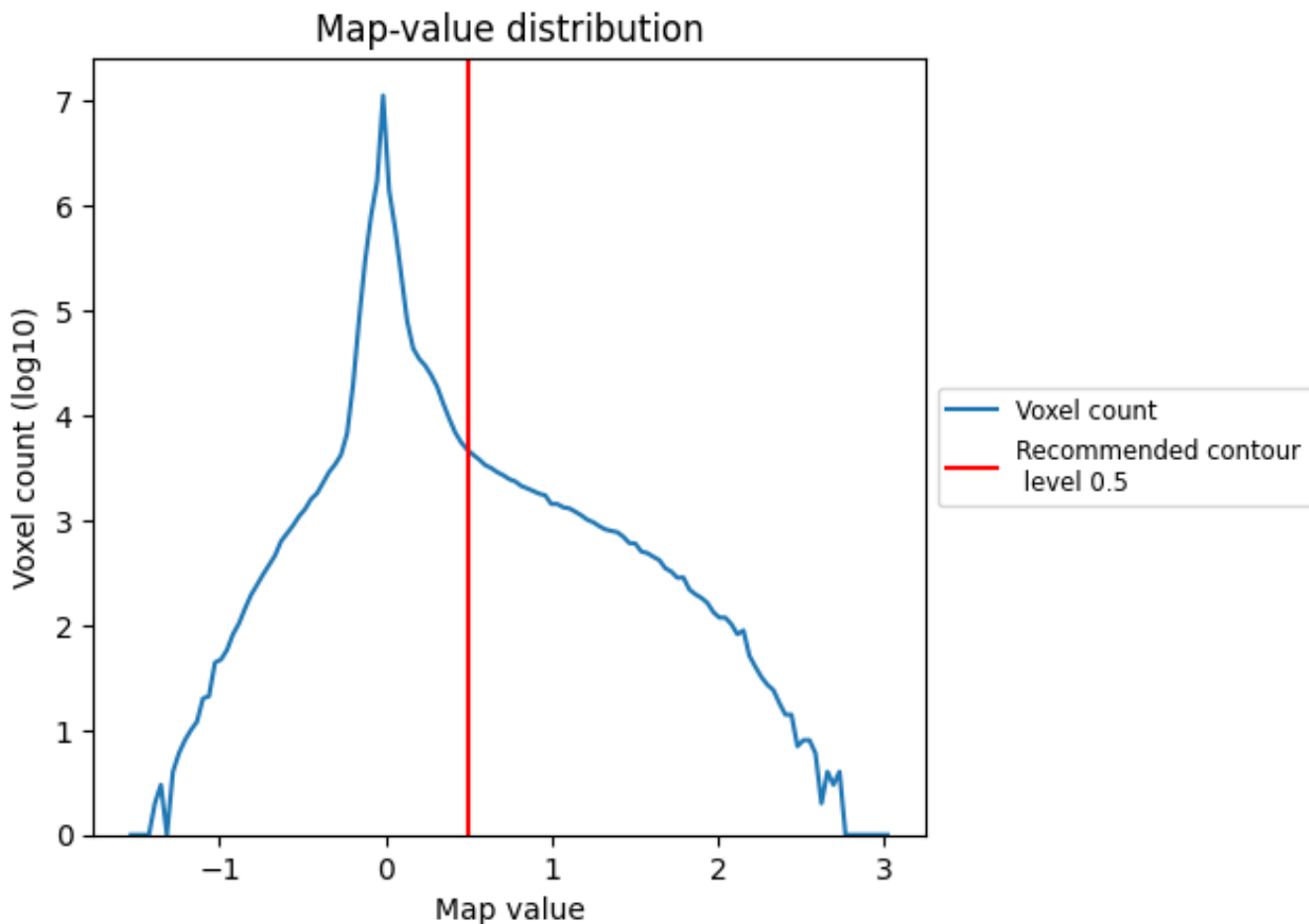
6.6 Mask visualisation [i](#)

This section was not generated. No masks/segmentation were deposited.

7 Map analysis [i](#)

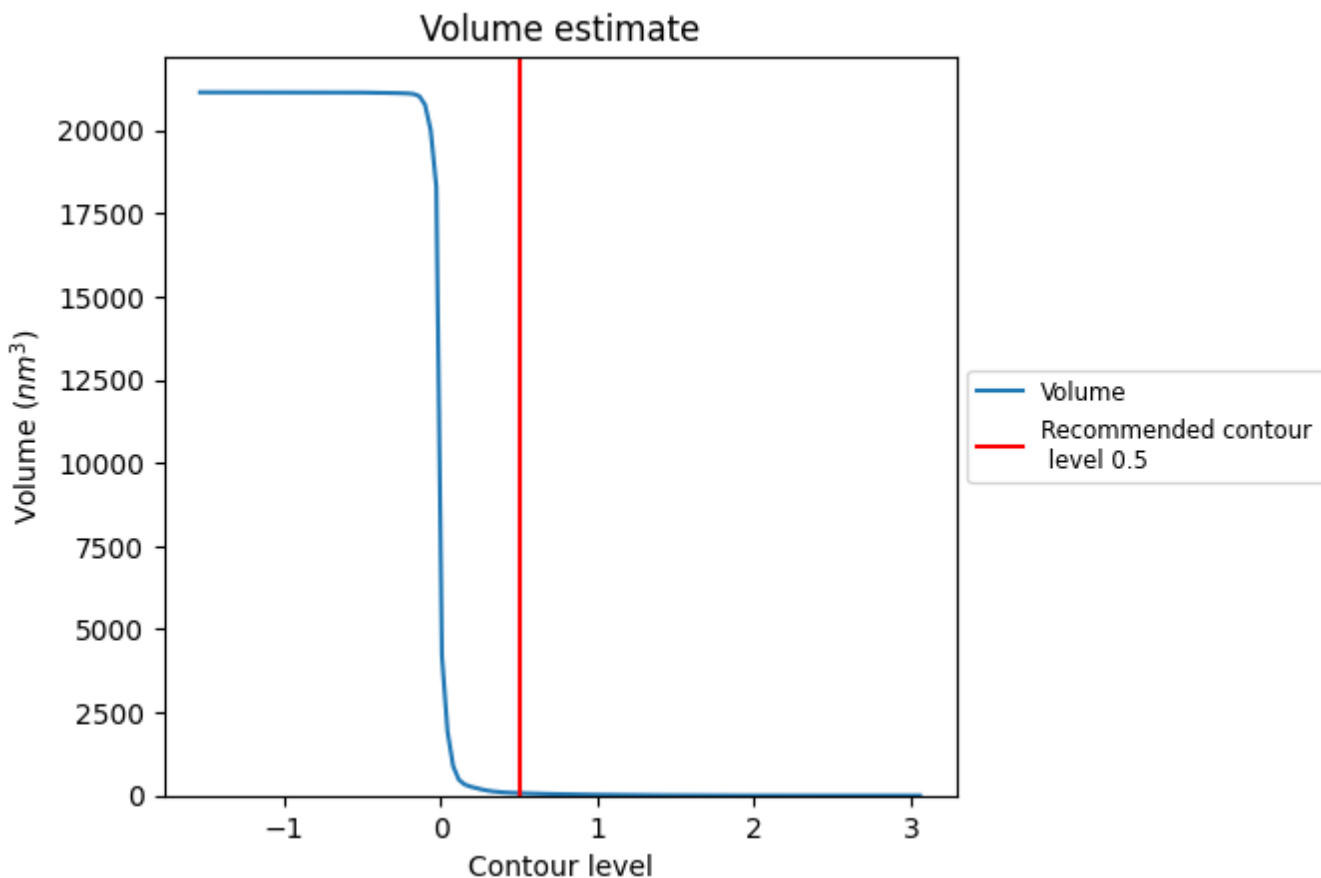
This section contains the results of statistical analysis of the map.

7.1 Map-value distribution [i](#)



The map-value distribution is plotted in 128 intervals along the x-axis. The y-axis is logarithmic. A spike in this graph at zero usually indicates that the volume has been masked.

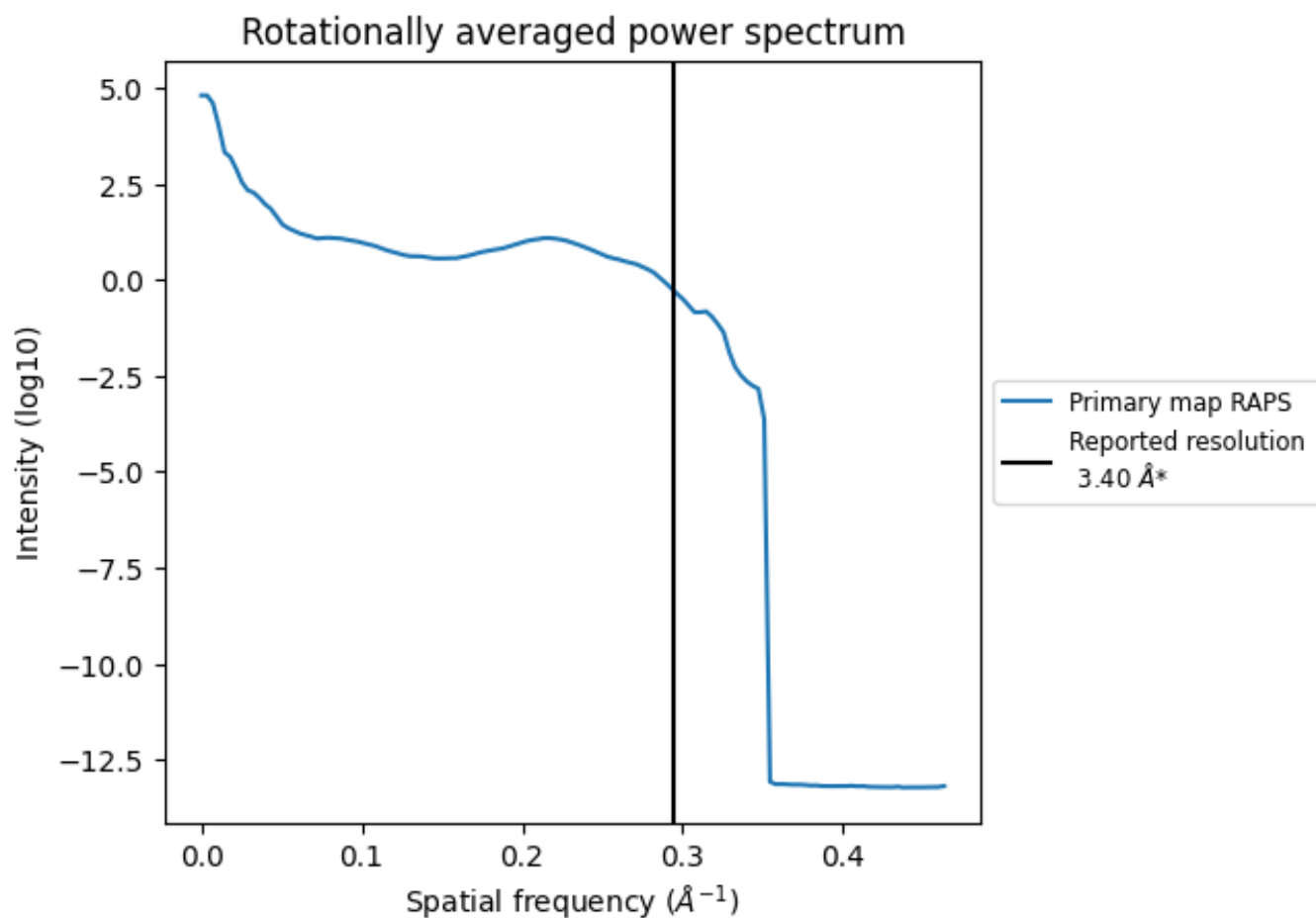
7.2 Volume estimate [i](#)



The volume at the recommended contour level is 73 nm³; this corresponds to an approximate mass of 66 kDa.

The volume estimate graph shows how the enclosed volume varies with the contour level. The recommended contour level is shown as a vertical line and the intersection between the line and the curve gives the volume of the enclosed surface at the given level.

7.3 Rotationally averaged power spectrum [i](#)



*Reported resolution corresponds to spatial frequency of 0.294 Å⁻¹

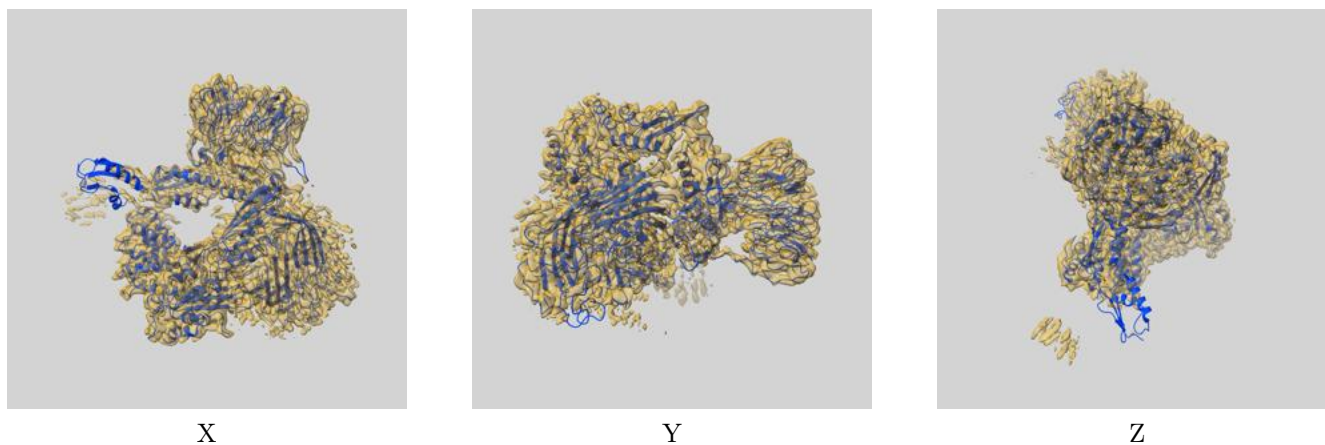
8 Fourier-Shell correlation

This section was not generated. No FSC curve or half-maps provided.

9 Map-model fit [i](#)

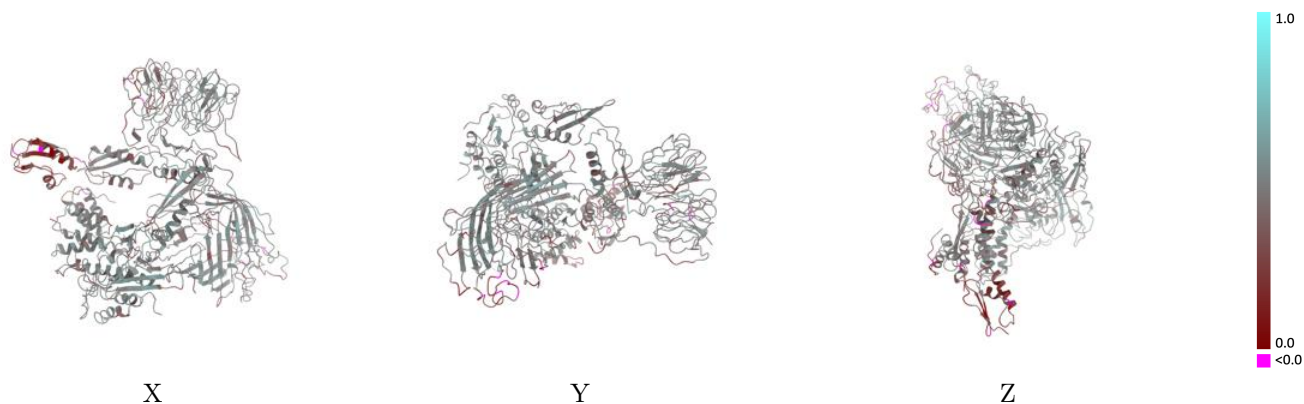
This section contains information regarding the fit between EMDB map EMD-24473 and PDB model 7RI4. Per-residue inclusion information can be found in section 3 on page 5.

9.1 Map-model overlay [i](#)



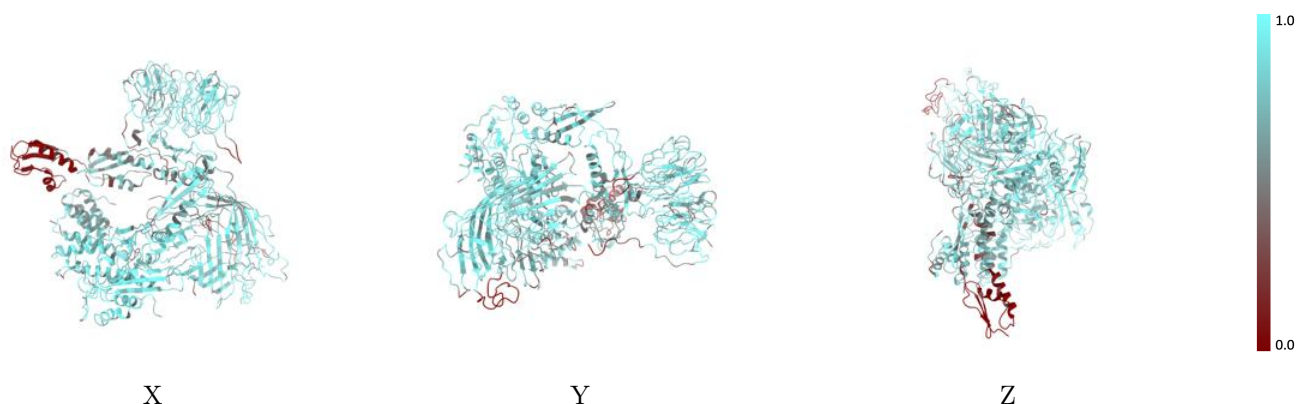
The images above show the 3D surface view of the map at the recommended contour level 0.5 at 50% transparency in yellow overlaid with a ribbon representation of the model coloured in blue. These images allow for the visual assessment of the quality of fit between the atomic model and the map.

9.2 Q-score mapped to coordinate model [i](#)



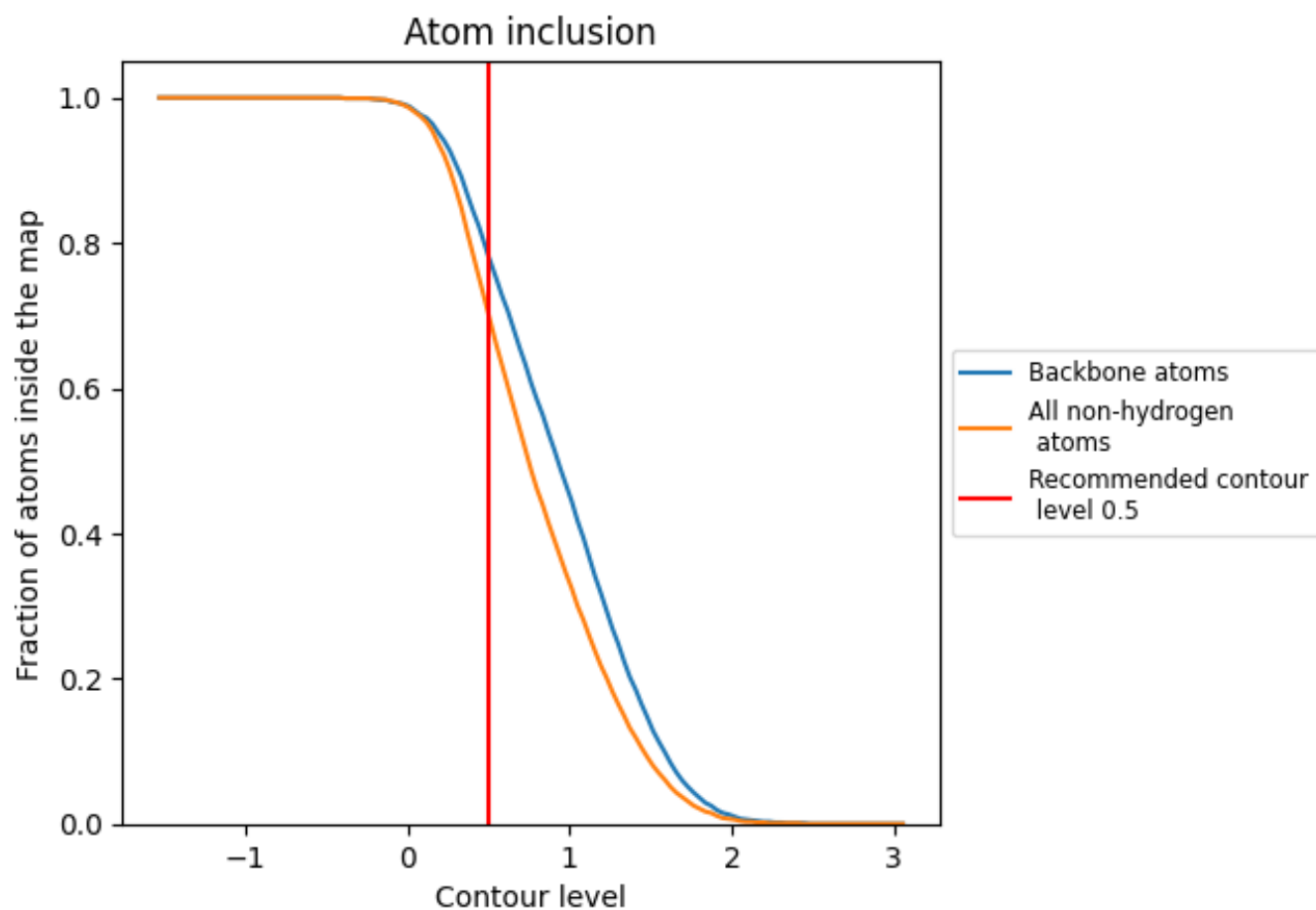
The images above show the model with each residue coloured according to its Q-score. This shows their resolvability in the map with higher Q-score values reflecting better resolvability. Please note: Q-score is calculating the resolvability of atoms, and thus high values are only expected at resolutions at which atoms can be resolved. Low Q-score values may therefore be expected for many entries.

9.3 Atom inclusion mapped to coordinate model [i](#)



The images above show the model with each residue coloured according to its atom inclusion. This shows to what extent they are inside the map at the recommended contour level (0.5).




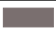










9.4 Atom inclusion [i](#)



At the recommended contour level, 78% of all backbone atoms, 70% of all non-hydrogen atoms, are inside the map.

9.5 Map-model fit summary [i](#)

The table lists the average atom inclusion at the recommended contour level (0.5) and Q-score for the entire model and for each chain.

Chain	Atom inclusion	Q-score
All	 0.7000	 0.4420
A	 0.6590	 0.4360
B	 0.7340	 0.4410
C	 0.6860	 0.4330
D	 0.7940	 0.4720
E	 0.8120	 0.4780
G	 0.5300	 0.3780

