



# Full wwPDB X-ray Structure Validation Report ⓘ

Feb 17, 2022 – 12:04 PM EST

PDB ID : 7RJ7  
Title : CRYSTAL STRUCTURE OF AP2 ASSOCIATED KINASE 1 ISOFORM 1 COMPLEXED WITH LIGAND 2-(1-AMINO-3-METHYLBUTYL)-6- (PYRIDIN-4-YL)QUINOLINE-4-CARBONITRILE  
Authors : Muckelbauer, J.  
Deposited on : 2021-07-20  
Resolution : 2.12 Å(reported)

This is a Full wwPDB X-ray Structure Validation Report for a publicly released PDB entry.

We welcome your comments at [validation@mail.wwpdb.org](mailto:validation@mail.wwpdb.org)

A user guide is available at

<https://www.wwpdb.org/validation/2017/XrayValidationReportHelp>

with specific help available everywhere you see the ⓘ symbol.

---

The following versions of software and data (see [references ⓘ](#)) were used in the production of this report:

MolProbity : 4.02b-467  
Mogul : 1.8.5 (274361), CSD as541be (2020)  
Xtriage (Phenix) : 1.13  
EDS : 2.26  
buster-report : 1.1.7 (2018)  
Percentile statistics : 20191225.v01 (using entries in the PDB archive December 25th 2019)  
Refmac : 5.8.0158  
CCP4 : 7.0.044 (Gargrove)  
Ideal geometry (proteins) : Engh & Huber (2001)  
Ideal geometry (DNA, RNA) : Parkinson et al. (1996)  
Validation Pipeline (wwPDB-VP) : 2.26

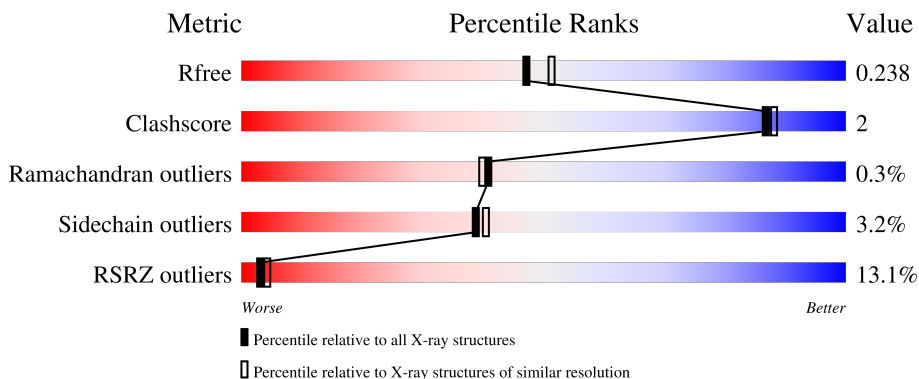
# 1 Overall quality at a glance

The following experimental techniques were used to determine the structure:

*X-RAY DIFFRACTION*

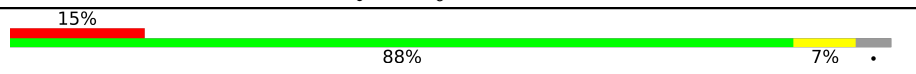

The reported resolution of this entry is 2.12 Å.

Percentile scores (ranging between 0-100) for global validation metrics of the entry are shown in the following graphic. The table shows the number of entries on which the scores are based.



Metric	Whole archive (#Entries)	Similar resolution (#Entries, resolution range(Å))
$R_{free}$	130704	6241 (2.14-2.10)
Clashscore	141614	6778 (2.14-2.10)
Ramachandran outliers	138981	6705 (2.14-2.10)
Sidechain outliers	138945	6706 (2.14-2.10)
RSRZ outliers	127900	6112 (2.14-2.10)

The table below summarises the geometric issues observed across the polymeric chains and their fit to the electron density. The red, orange, yellow and green segments of the lower bar indicate the fraction of residues that contain outliers for  $\geq 3$ , 2, 1 and 0 types of geometric quality criteria respectively. A grey segment represents the fraction of residues that are not modelled. The numeric value for each fraction is indicated below the corresponding segment, with a dot representing fractions  $\leq 5\%$ . The upper red bar (where present) indicates the fraction of residues that have poor fit to the electron density. The numeric value is given above the bar.

Mol	Chain	Length	Quality of chain
1	A	318	
1	B	318	

## 2 Entry composition i

There are 4 unique types of molecules in this entry. The entry contains 9497 atoms, of which 4534 are hydrogens and 0 are deuteriums.

In the tables below, the ZeroOcc column contains the number of atoms modelled with zero occupancy, the AltConf column contains the number of residues with at least one atom in alternate conformation and the Trace column contains the number of residues modelled with at most 2 atoms.

- Molecule 1 is a protein called AP2-associated protein kinase 1.

Mol	Chain	Residues	Atoms						ZeroOcc	AltConf	Trace
			Total	C	H	N	O	S			
1	A	304	4596	1494	2253	388	442	19	2253	4	0
1	B	300	4566	1476	2241	392	436	21	2241	2	0

There are 26 discrepancies between the modelled and reference sequences:

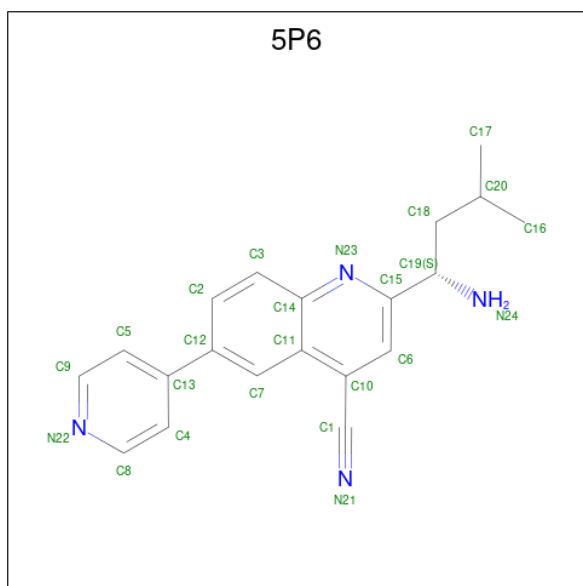
Chain	Residue	Modelled	Actual	Comment	Reference
A	13	MET	-	initiating methionine	UNP Q3UHJ0
A	14	HIS	-	expression tag	UNP Q3UHJ0
A	15	HIS	-	expression tag	UNP Q3UHJ0
A	16	HIS	-	expression tag	UNP Q3UHJ0
A	17	HIS	-	expression tag	UNP Q3UHJ0
A	18	HIS	-	expression tag	UNP Q3UHJ0
A	19	HIS	-	expression tag	UNP Q3UHJ0
A	20	LEU	-	expression tag	UNP Q3UHJ0
A	21	VAL	-	expression tag	UNP Q3UHJ0
A	22	PRO	-	expression tag	UNP Q3UHJ0
A	23	ARG	-	expression tag	UNP Q3UHJ0
A	24	GLY	-	expression tag	UNP Q3UHJ0
A	25	SER	-	expression tag	UNP Q3UHJ0
B	13	MET	-	initiating methionine	UNP Q3UHJ0
B	14	HIS	-	expression tag	UNP Q3UHJ0
B	15	HIS	-	expression tag	UNP Q3UHJ0
B	16	HIS	-	expression tag	UNP Q3UHJ0
B	17	HIS	-	expression tag	UNP Q3UHJ0
B	18	HIS	-	expression tag	UNP Q3UHJ0
B	19	HIS	-	expression tag	UNP Q3UHJ0
B	20	LEU	-	expression tag	UNP Q3UHJ0
B	21	VAL	-	expression tag	UNP Q3UHJ0
B	22	PRO	-	expression tag	UNP Q3UHJ0
B	23	ARG	-	expression tag	UNP Q3UHJ0
B	24	GLY	-	expression tag	UNP Q3UHJ0

*Continued on next page...*

Continued from previous page...

Chain	Residue	Modelled	Actual	Comment	Reference
B	25	SER	-	expression tag	UNP Q3UHJ0

- Molecule 2 is 2-[(1S)-1-amino-3-methylbutyl]-6-(pyridin-4-yl)quinoline-4-carbonitrile (three-letter code: 5P6) (formula: C<sub>20</sub>H<sub>20</sub>N<sub>4</sub>) (labeled as "Ligand of Interest" by depositor).



Mol	Chain	Residues	Atoms				ZeroOcc	AltConf
			Total	C	H	N		
2	A	1	44	20	20	4	20	0
2	B	1	44	20	20	4	20	0

- Molecule 3 is SULFATE ION (three-letter code: SO4) (formula: O<sub>4</sub>S).



Mol	Chain	Residues	Atoms			ZeroOcc	AltConf
3	B	1	Total	O	S	0	0
			5	4	1		
3	B	1	Total	O	S	0	0
			5	4	1		
3	B	1	Total	O	S	0	0
			5	4	1		
3	B	1	Total	O	S	0	0
			5	4	1		
3	B	1	Total	O	S	0	0
			5	4	1		

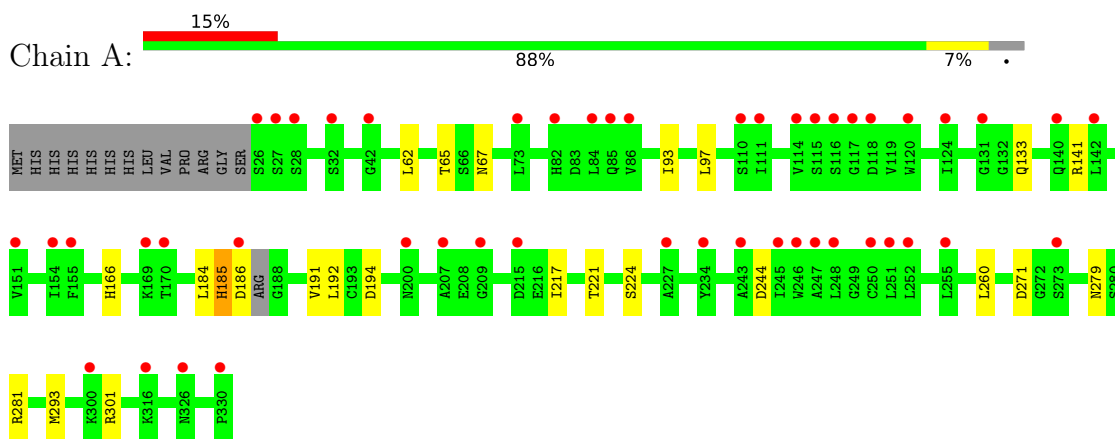
- Molecule 4 is water.

Mol	Chain	Residues	Atoms		ZeroOcc	AltConf
4	A	103	Total	O	0	0
			103	103		
4	B	114	Total	O	0	0
			114	114		

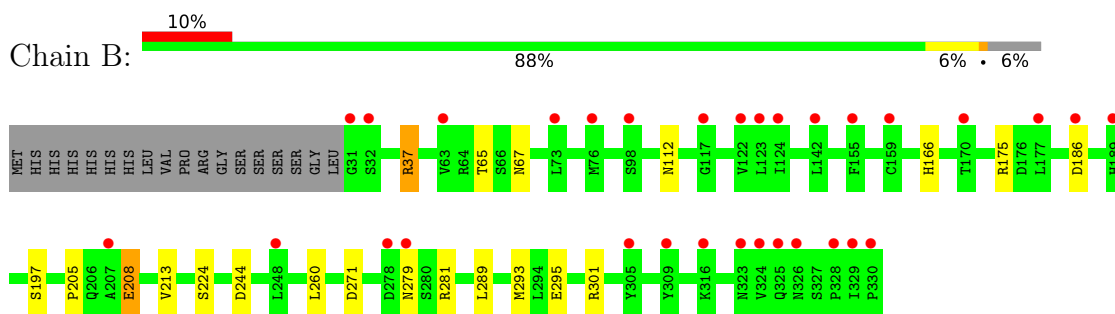
### 3 Residue-property plots [i](#)

These plots are drawn for all protein, RNA, DNA and oligosaccharide chains in the entry. The first graphic for a chain summarises the proportions of the various outlier classes displayed in the second graphic. The second graphic shows the sequence view annotated by issues in geometry and electron density. Residues are color-coded according to the number of geometric quality criteria for which they contain at least one outlier: green = 0, yellow = 1, orange = 2 and red = 3 or more. A red dot above a residue indicates a poor fit to the electron density ( $RSRZ > 2$ ). Stretches of 2 or more consecutive residues without any outlier are shown as a green connector. Residues present in the sample, but not in the model, are shown in grey.

- Molecule 1: AP2-associated protein kinase 1



- Molecule 1: AP2-associated protein kinase 1



## 4 Data and refinement statistics

Property	Value	Source
Space group	P 31 2 1	Depositor
Cell constants a, b, c, $\alpha$ , $\beta$ , $\gamma$	91.21Å 91.21Å 173.71Å 90.00° 90.00° 120.00°	Depositor
Resolution (Å)	21.24 – 2.12 21.24 – 2.12	Depositor EDS
% Data completeness (in resolution range)	91.5 (21.24-2.12) 91.6 (21.24-2.12)	Depositor EDS
$R_{merge}$	0.06	Depositor
$R_{sym}$	(Not available)	Depositor
$\langle I/\sigma(I) \rangle$ <sup>1</sup>	1.61 (at 2.13Å)	Xtrriage
Refinement program	BUSTER	Depositor
R, $R_{free}$	0.229 , 0.241 0.220 , 0.238	Depositor DCC
$R_{free}$ test set	2237 reflections (5.10%)	wwPDB-VP
Wilson B-factor (Å <sup>2</sup> )	55.3	Xtrriage
Anisotropy	0.019	Xtrriage
Bulk solvent $k_{sol}$ (e/Å <sup>3</sup> ), $B_{sol}$ (Å <sup>2</sup> )	0.33 , 55.4	EDS
L-test for twinning <sup>2</sup>	$\langle  L  \rangle = 0.49$ , $\langle L^2 \rangle = 0.32$	Xtrriage
Estimated twinning fraction	0.029 for -h,-k,l	Xtrriage
$F_o, F_c$ correlation	0.95	EDS
Total number of atoms	9497	wwPDB-VP
Average B, all atoms (Å <sup>2</sup> )	66.0	wwPDB-VP

Xtrriage's analysis on translational NCS is as follows: *The largest off-origin peak in the Patterson function is 3.65% of the height of the origin peak. No significant pseudotranslation is detected.*

<sup>1</sup>Intensities estimated from amplitudes.

<sup>2</sup>Theoretical values of  $\langle |L| \rangle$ ,  $\langle L^2 \rangle$  for acentric reflections are 0.5, 0.333 respectively for untwinned datasets, and 0.375, 0.2 for perfectly twinned datasets.

## 5 Model quality [i](#)

### 5.1 Standard geometry [i](#)

Bond lengths and bond angles in the following residue types are not validated in this section: 5P6, SO4

The Z score for a bond length (or angle) is the number of standard deviations the observed value is removed from the expected value. A bond length (or angle) with  $|Z| > 5$  is considered an outlier worth inspection. RMSZ is the root-mean-square of all Z scores of the bond lengths (or angles).

Mol	Chain	Bond lengths		Bond angles	
		RMSZ	# Z  >5	RMSZ	# Z  >5
1	A	0.40	0/2396	0.57	0/3252
1	B	0.40	0/2380	0.59	0/3232
All	All	0.40	0/4776	0.58	0/6484

There are no bond length outliers.

There are no bond angle outliers.

There are no chirality outliers.

There are no planarity outliers.

### 5.2 Too-close contacts [i](#)

In the following table, the Non-H and H(model) columns list the number of non-hydrogen atoms and hydrogen atoms in the chain respectively. The H(added) column lists the number of hydrogen atoms added and optimized by MolProbity. The Clashes column lists the number of clashes within the asymmetric unit, whereas Symm-Clashes lists symmetry-related clashes.

Mol	Chain	Non-H	H(model)	H(added)	Clashes	Symm-Clashes
1	A	2343	2253	2250	10	0
1	B	2325	2241	2239	9	0
2	A	24	20	0	0	0
2	B	24	20	0	0	0
3	B	30	0	0	2	0
4	A	103	0	0	2	0
4	B	114	0	0	0	0
All	All	4963	4534	4489	19	0

The all-atom clashscore is defined as the number of clashes found per 1000 atoms (including hydrogen atoms). The all-atom clashscore for this structure is 2.



All (19) close contacts within the same asymmetric unit are listed below, sorted by their clash magnitude.

Atom-1	Atom-2	Interatomic distance (Å)	Clash overlap (Å)
1:B:295:GLU:O	1:B:301:ARG:HD3	2.04	0.57
1:A:166:HIS:HE1	1:A:244:ASP:OD2	1.89	0.56
1:B:166:HIS:HE1	1:B:244:ASP:OD2	1.88	0.56
1:A:65:THR:OG1	1:A:67[A]:ASN:OD1	2.22	0.55
1:A:133[B]:GLN:HG2	4:A:503:HOH:O	2.07	0.54
1:A:293:MET:O	1:A:301:ARG:HD2	2.07	0.54
1:B:175:ARG:HD3	1:B:197:SER:O	2.09	0.52
1:A:185:HIS:HE1	4:A:545:HOH:O	1.92	0.52
1:B:293:MET:O	1:B:301:ARG:HD2	2.10	0.51
1:B:37:ARG:NH2	3:B:403:SO4:O1	2.45	0.50
1:A:185:HIS:ND1	1:A:191:VAL:HG21	2.30	0.47
1:B:205:PRO:HA	1:B:213:VAL:HG21	1.99	0.44
1:A:93:ILE:HG23	1:A:97:LEU:HD12	1.99	0.42
1:B:112:ASN:ND2	3:B:404:SO4:O3	2.48	0.42
1:A:217:ILE:O	1:A:221:THR:HB	2.19	0.41
1:B:65:THR:OG1	1:B:67:ASN:OD1	2.38	0.41
1:A:93:ILE:HG23	1:A:97:LEU:CD1	2.51	0.41
1:B:224:SER:HB3	1:B:260:LEU:HD13	2.02	0.40
1:A:224:SER:HB3	1:A:260:LEU:HD13	2.04	0.40

There are no symmetry-related clashes.

## 5.3 Torsion angles [\(i\)](#)

### 5.3.1 Protein backbone [\(i\)](#)

In the following table, the Percentiles column shows the percent Ramachandran outliers of the chain as a percentile score with respect to all X-ray entries followed by that with respect to entries of similar resolution.

The Analysed column shows the number of residues for which the backbone conformation was analysed, and the total number of residues.

Mol	Chain	Analysed	Favoured	Allowed	Outliers	Percentiles
1	A	303/318 (95%)	293 (97%)	9 (3%)	1 (0%)	41 40
1	B	300/318 (94%)	293 (98%)	6 (2%)	1 (0%)	41 40
All	All	603/636 (95%)	586 (97%)	15 (2%)	2 (0%)	41 40

All (2) Ramachandran outliers are listed below:

Mol	Chain	Res	Type
1	A	194	ASP
1	B	208	GLU

### 5.3.2 Protein sidechains [i](#)

In the following table, the Percentiles column shows the percent sidechain outliers of the chain as a percentile score with respect to all X-ray entries followed by that with respect to entries of similar resolution.

The Analysed column shows the number of residues for which the sidechain conformation was analysed, and the total number of residues.

Mol	Chain	Analysed	Rotameric	Outliers	Percentiles	
1	A	252/283 (89%)	242 (96%)	10 (4%)	31	31
1	B	251/283 (89%)	244 (97%)	7 (3%)	43	46
All	All	503/566 (89%)	486 (97%)	17 (3%)	39	38

All (17) residues with a non-rotameric sidechain are listed below:

Mol	Chain	Res	Type
1	A	62	LEU
1	A	141	ARG
1	A	184	LEU
1	A	185	HIS
1	A	186	ASP
1	A	192	LEU
1	A	271	ASP
1	A	279	ASN
1	A	281[A]	ARG
1	A	281[B]	ARG
1	B	37	ARG
1	B	186	ASP
1	B	208	GLU
1	B	271	ASP
1	B	279	ASN
1	B	281	ARG
1	B	289	LEU

Sometimes sidechains can be flipped to improve hydrogen bonding and reduce clashes. All (7) such sidechains are listed below:

Mol	Chain	Res	Type
1	A	166	HIS
1	A	174	HIS
1	A	279	ASN
1	B	166	HIS
1	B	174	HIS
1	B	189	HIS
1	B	279	ASN

### 5.3.3 RNA [i](#)

There are no RNA molecules in this entry.

### 5.4 Non-standard residues in protein, DNA, RNA chains [i](#)

There are no non-standard protein/DNA/RNA residues in this entry.

### 5.5 Carbohydrates [i](#)

There are no monosaccharides in this entry.

### 5.6 Ligand geometry [i](#)

8 ligands are modelled in this entry.

In the following table, the Counts columns list the number of bonds (or angles) for which Mogul statistics could be retrieved, the number of bonds (or angles) that are observed in the model and the number of bonds (or angles) that are defined in the Chemical Component Dictionary. The Link column lists molecule types, if any, to which the group is linked. The Z score for a bond length (or angle) is the number of standard deviations the observed value is removed from the expected value. A bond length (or angle) with  $|Z| > 2$  is considered an outlier worth inspection. RMSZ is the root-mean-square of all Z scores of the bond lengths (or angles).

Mol	Type	Chain	Res	Link	Bond lengths			Bond angles		
					Counts	RMSZ	$\# Z  > 2$	Counts	RMSZ	$\# Z  > 2$
3	SO4	B	407	-	4,4,4	0.18	0	6,6,6	0.08	0
3	SO4	B	405	-	4,4,4	0.19	0	6,6,6	0.08	0
2	5P6	B	401	-	26,26,26	0.26	0	31,36,36	0.39	0
3	SO4	B	406	-	4,4,4	0.15	0	6,6,6	0.05	0
3	SO4	B	403	-	4,4,4	0.23	0	6,6,6	0.42	0
3	SO4	B	402	-	4,4,4	0.14	0	6,6,6	0.23	0
3	SO4	B	404	-	4,4,4	0.17	0	6,6,6	0.12	0
2	5P6	A	401	-	26,26,26	0.26	0	31,36,36	0.33	0

In the following table, the Chirals column lists the number of chiral outliers, the number of chiral centers analysed, the number of these observed in the model and the number defined in the Chemical Component Dictionary. Similar counts are reported in the Torsion and Rings columns. '-' means no outliers of that kind were identified.

Mol	Type	Chain	Res	Link	Chirals	Torsions	Rings
2	5P6	B	401	-	-	0/13/14/14	0/3/3/3
2	5P6	A	401	-	-	0/13/14/14	0/3/3/3

There are no bond length outliers.

There are no bond angle outliers.

There are no chirality outliers.

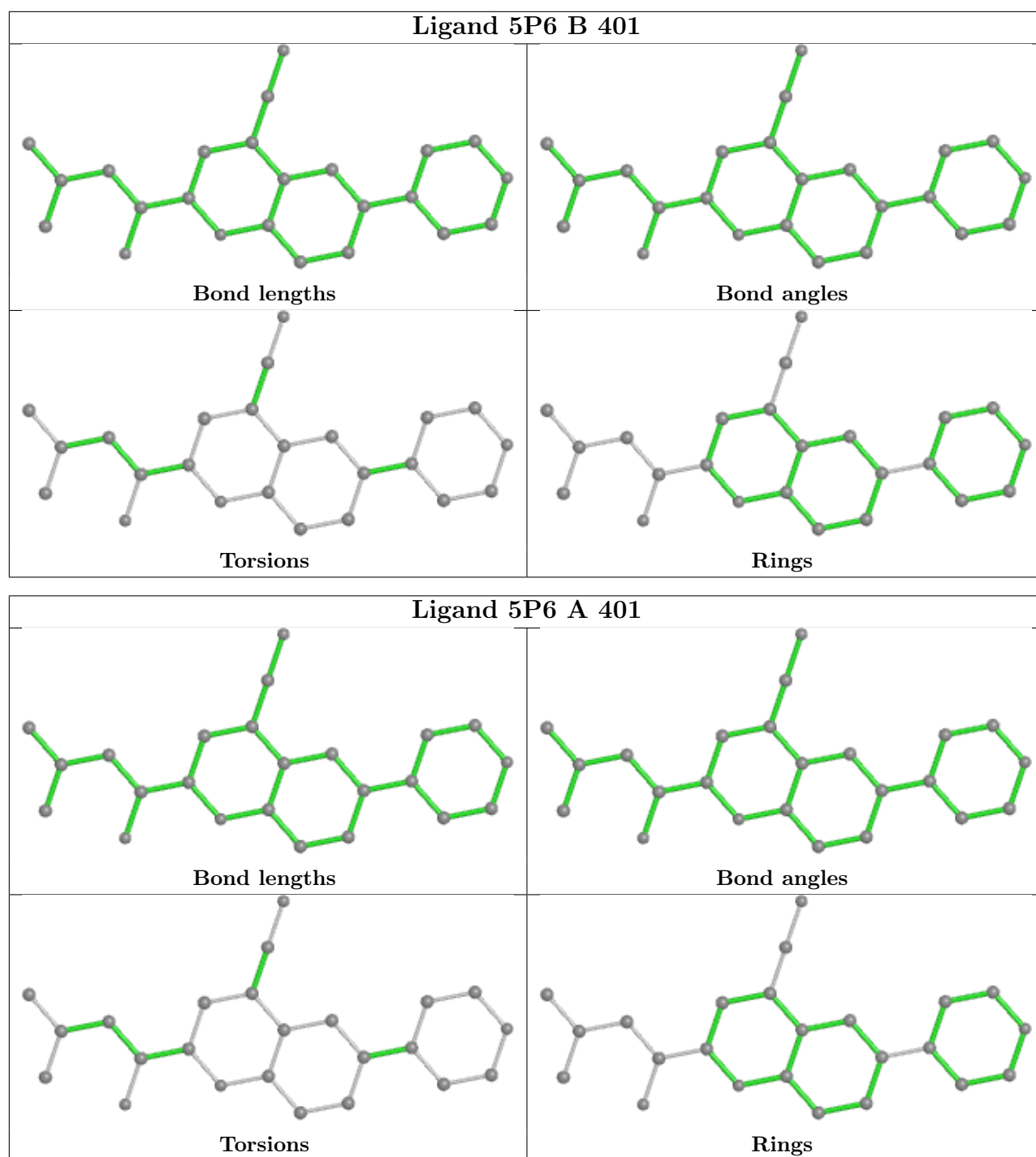
There are no torsion outliers.

There are no ring outliers.

2 monomers are involved in 2 short contacts:

Mol	Chain	Res	Type	Clashes	Symm-Clashes
3	B	403	SO4	1	0
3	B	404	SO4	1	0

The following is a two-dimensional graphical depiction of Mogul quality analysis of bond lengths, bond angles, torsion angles, and ring geometry for all instances of the Ligand of Interest. In addition, ligands with molecular weight > 250 and outliers as shown on the validation Tables will also be included. For torsion angles, if less than 5% of the Mogul distribution of torsion angles is within 10 degrees of the torsion angle in question, then that torsion angle is considered an outlier. Any bond that is central to one or more torsion angles identified as an outlier by Mogul will be highlighted in the graph. For rings, the root-mean-square deviation (RMSD) between the ring in question and similar rings identified by Mogul is calculated over all ring torsion angles. If the average RMSD is greater than 60 degrees and the minimal RMSD between the ring in question and any Mogul-identified rings is also greater than 60 degrees, then that ring is considered an outlier. The outliers are highlighted in purple. The color gray indicates Mogul did not find sufficient equivalents in the CSD to analyse the geometry.



## 5.7 Other polymers [i](#)

There are no such residues in this entry.

## 5.8 Polymer linkage issues [i](#)

There are no chain breaks in this entry.

## 6 Fit of model and data

### 6.1 Protein, DNA and RNA chains

In the following table, the column labelled ‘#RSRZ > 2’ contains the number (and percentage) of RSRZ outliers, followed by percent RSRZ outliers for the chain as percentile scores relative to all X-ray entries and entries of similar resolution. The OWAB column contains the minimum, median, 95<sup>th</sup> percentile and maximum values of the occupancy-weighted average B-factor per residue. The column labelled ‘Q < 0.9’ lists the number of (and percentage) of residues with an average occupancy less than 0.9.

Mol	Chain	Analysed	<RSRZ>	#RSRZ>2	OWAB(Å <sup>2</sup> )	Q<0.9
1	A	304/318 (95%)	0.92	48 (15%) <b>2</b>   <b>2</b>	41, 68, 99, 110	1 (0%)
1	B	300/318 (94%)	0.66	31 (10%) <b>6</b>   <b>8</b>	46, 63, 89, 105	0
All	All	604/636 (94%)	0.79	79 (13%) <b>3</b>   <b>4</b>	41, 66, 95, 110	1 (0%)

All (79) RSRZ outliers are listed below:

Mol	Chain	Res	Type	RSRZ
1	A	116	SER	8.6
1	A	330	PRO	6.6
1	B	32	SER	6.5
1	B	278	ASP	5.8
1	B	330	PRO	5.7
1	B	279	ASN	5.3
1	A	142	LEU	4.8
1	A	26	SER	4.6
1	A	207	ALA	4.6
1	A	86	VAL	4.4
1	B	326	ASN	4.3
1	B	31	GLY	4.3
1	A	186	ASP	4.2
1	A	85	GLN	4.2
1	A	248	LEU	4.1
1	A	252	LEU	3.9
1	A	117	GLY	3.9
1	A	209	GLY	3.8
1	B	248	LEU	3.8
1	A	27	SER	3.8
1	A	111	ILE	3.7
1	B	186	ASP	3.6
1	A	170	THR	3.6
1	A	251	LEU	3.6

*Continued on next page...*

*Continued from previous page...*

<b>Mol</b>	<b>Chain</b>	<b>Res</b>	<b>Type</b>	<b>RSRZ</b>
1	A	28	SER	3.6
1	A	326	ASN	3.5
1	A	118	ASP	3.4
1	A	42	GLY	3.4
1	A	155	PHE	3.4
1	A	243	ALA	3.4
1	A	115	SER	3.3
1	B	124	ILE	3.3
1	A	247	ALA	3.3
1	B	123	LEU	3.2
1	A	154	ILE	3.2
1	A	151	VAL	3.1
1	A	114	VAL	3.1
1	A	169	LYS	3.0
1	B	323	ASN	3.0
1	A	73	LEU	3.0
1	B	73	LEU	3.0
1	A	300	LYS	2.9
1	A	82	HIS	2.9
1	B	328	PRO	2.9
1	B	122	VAL	2.9
1	A	245	ILE	2.8
1	B	305	TYR	2.8
1	B	117	GLY	2.8
1	A	120	TRP	2.7
1	B	324	VAL	2.7
1	A	255	LEU	2.7
1	B	325	GLN	2.7
1	A	246	TRP	2.6
1	B	207	ALA	2.6
1	B	329	ILE	2.6
1	A	84	LEU	2.6
1	B	159	CYS	2.6
1	A	273	SER	2.5
1	B	98	SER	2.4
1	B	316	LYS	2.4
1	B	76[A]	MET	2.3
1	A	227	ALA	2.3
1	A	124	ILE	2.3
1	B	63	VAL	2.2
1	A	234	TYR	2.2
1	B	155	PHE	2.2

*Continued on next page...*

*Continued from previous page...*

Mol	Chain	Res	Type	RSRZ
1	A	110	SER	2.2
1	A	250	CYS	2.2
1	B	142	LEU	2.2
1	A	316	LYS	2.2
1	B	170	THR	2.2
1	A	140	GLN	2.1
1	B	189	HIS	2.1
1	B	309	TYR	2.1
1	A	215	ASP	2.1
1	A	200	ASN	2.1
1	A	32	SER	2.0
1	B	177	LEU	2.0
1	A	131	GLY	2.0

## 6.2 Non-standard residues in protein, DNA, RNA chains [i](#)

There are no non-standard protein/DNA/RNA residues in this entry.

## 6.3 Carbohydrates [i](#)

There are no monosaccharides in this entry.

## 6.4 Ligands [i](#)

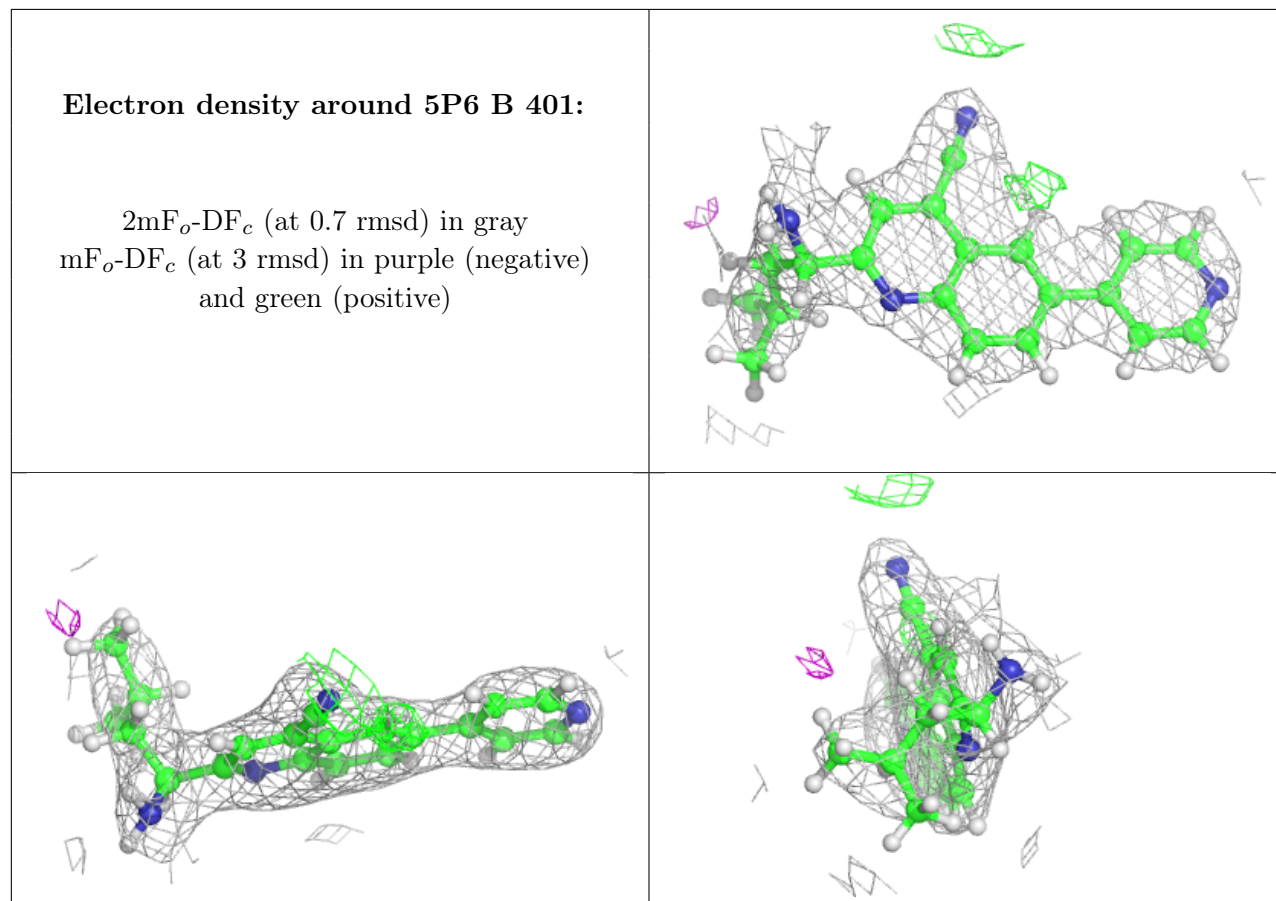
In the following table, the Atoms column lists the number of modelled atoms in the group and the number defined in the chemical component dictionary. The B-factors column lists the minimum, median, 95<sup>th</sup> percentile and maximum values of B factors of atoms in the group. The column labelled 'Q< 0.9' lists the number of atoms with occupancy less than 0.9.

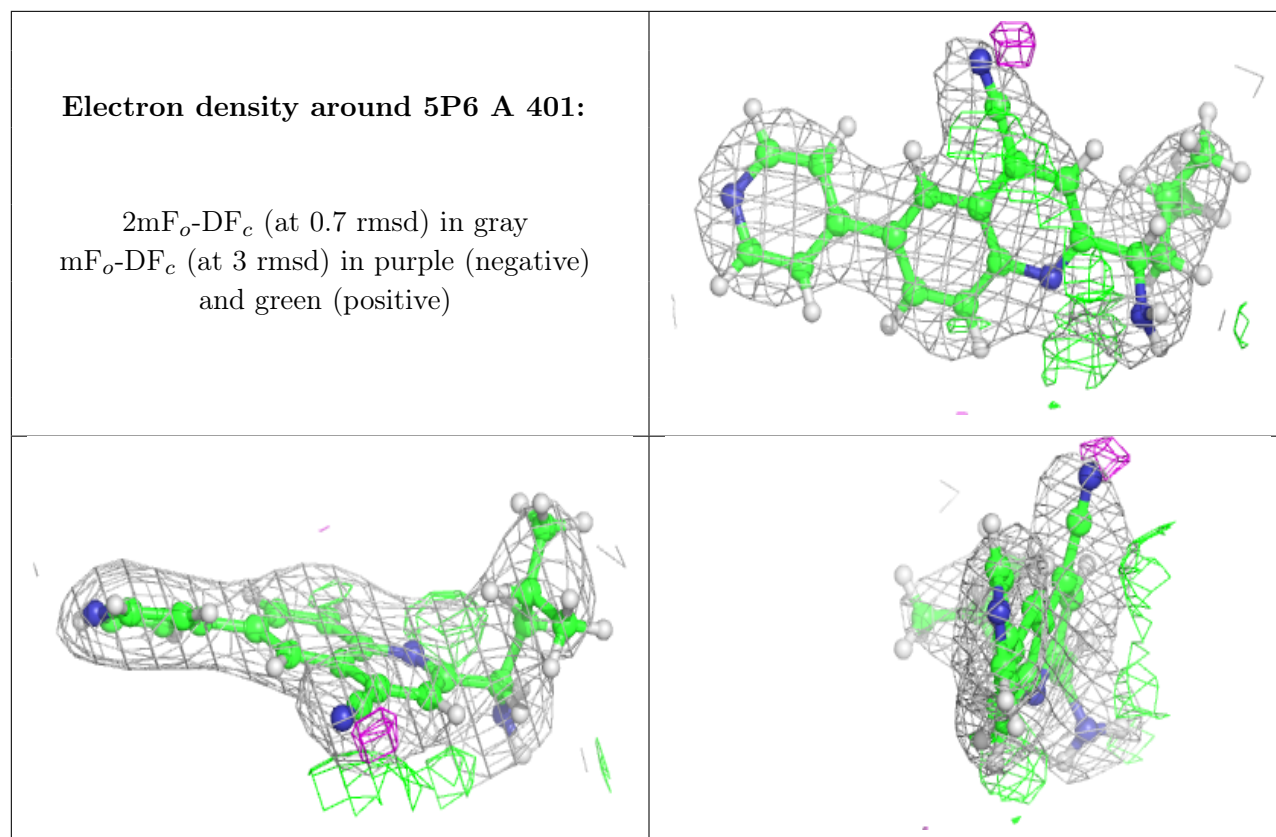
Mol	Type	Chain	Res	Atoms	RSCC	RSR	B-factors( $\text{\AA}^2$ )	Q<0.9
3	SO4	B	407	5/5	0.67	0.24	148,148,148,148	0
3	SO4	B	404	5/5	0.72	0.31	140,140,140,140	0
3	SO4	B	406	5/5	0.81	0.35	152,152,152,152	0
2	5P6	B	401	24/24	0.92	0.14	55,56,56,56	20
2	5P6	A	401	24/24	0.92	0.14	55,57,59,59	20
3	SO4	B	405	5/5	0.94	0.23	112,112,112,112	0
3	SO4	B	403	5/5	0.96	0.09	59,60,60,60	0
3	SO4	B	402	5/5	0.97	0.25	83,83,83,83	0

The following is a graphical depiction of the model fit to experimental electron density of all



instances of the Ligand of Interest. In addition, ligands with molecular weight > 250 and outliers as shown on the geometry validation Tables will also be included. Each fit is shown from different orientation to approximate a three-dimensional view.





## 6.5 Other polymers [i](#)

There are no such residues in this entry.