



Full wwPDB X-ray Structure Validation Report ⓘ

May 18, 2020 – 08:43 am BST

PDB ID : 6RK9
Title : Aspartyl/Asparaginyl beta-hydroxylase (AspH) oxygenase and TPR domains in complex with manganese, N-oxalyglycine and cyclic peptide substrate mimic of factor X
Authors : McDonough, M.A.; Pfeffer, I.
Deposited on : 2019-04-30
Resolution : 2.29 Å (reported)

This is a Full wwPDB X-ray Structure Validation Report for a publicly released PDB entry.

We welcome your comments at validation@mail.wwpdb.org

A user guide is available at

<https://www.wwpdb.org/validation/2017/XrayValidationReportHelp>

with specific help available everywhere you see the ⓘ symbol.

The following versions of software and data (see [references ⓘ](#)) were used in the production of this report:

MolProbity : 4.02b-467
Mogul : 1.8.5 (274361), CSD as541be (2020)
Xtriage (Phenix) : 1.13
EDS : 2.11
Percentile statistics : 20191225.v01 (using entries in the PDB archive December 25th 2019)
Refmac : 5.8.0158
CCP4 : 7.0.044 (Gargrove)
Ideal geometry (proteins) : Engh & Huber (2001)
Ideal geometry (DNA, RNA) : Parkinson et al. (1996)
Validation Pipeline (wwPDB-VP) : 2.11

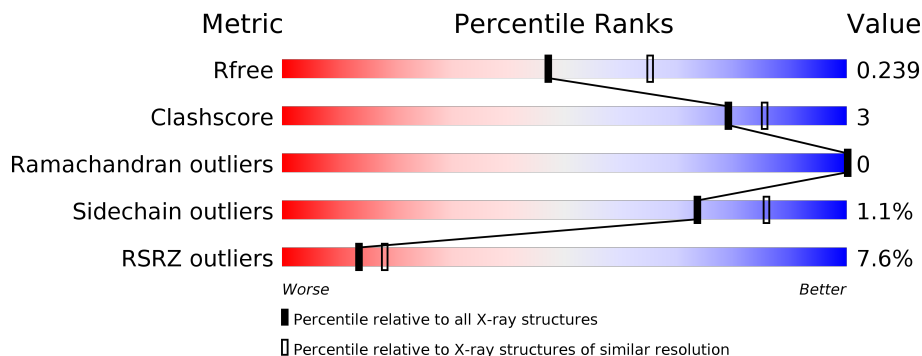
1 Overall quality at a glance i

The following experimental techniques were used to determine the structure:

X-RAY DIFFRACTION

The reported resolution of this entry is 2.29 Å.

Percentile scores (ranging between 0-100) for global validation metrics of the entry are shown in the following graphic. The table shows the number of entries on which the scores are based.



Metric	Whole archive (#Entries)	Similar resolution (#Entries, resolution range(Å))
R_{free}	130704	5042 (2.30-2.30)
Clashscore	141614	5643 (2.30-2.30)
Ramachandran outliers	138981	5575 (2.30-2.30)
Sidechain outliers	138945	5575 (2.30-2.30)
RSRZ outliers	127900	4938 (2.30-2.30)

The table below summarises the geometric issues observed across the polymeric chains and their fit to the electron density. The red, orange, yellow and green segments on the lower bar indicate the fraction of residues that contain outliers for ≥ 3 , 2, 1 and 0 types of geometric quality criteria respectively. A grey segment represents the fraction of residues that are not modelled. The numeric value for each fraction is indicated below the corresponding segment, with a dot representing fractions $\leq 5\%$. The upper red bar (where present) indicates the fraction of residues that have poor fit to the electron density. The numeric value is given above the bar.

Mol	Chain	Length	Quality of chain
1	A	429	
1	B	429	
2	C	19	

2 Entry composition [i](#)

There are 5 unique types of molecules in this entry. The entry contains 7223 atoms, of which 0 are hydrogens and 0 are deuteriums.

In the tables below, the ZeroOcc column contains the number of atoms modelled with zero occupancy, the AltConf column contains the number of residues with at least one atom in alternate conformation and the Trace column contains the number of residues modelled with at most 2 atoms.

- Molecule 1 is a protein called Aspartyl/asparaginyl beta-hydroxylase.

Mol	Chain	Residues	Atoms					ZeroOcc	AltConf	Trace
			Total	C	N	O	S			
1	A	429	3414	2164	606	632	12	0	0	0
1	B	429	3430	2177	614	627	12	0	0	0

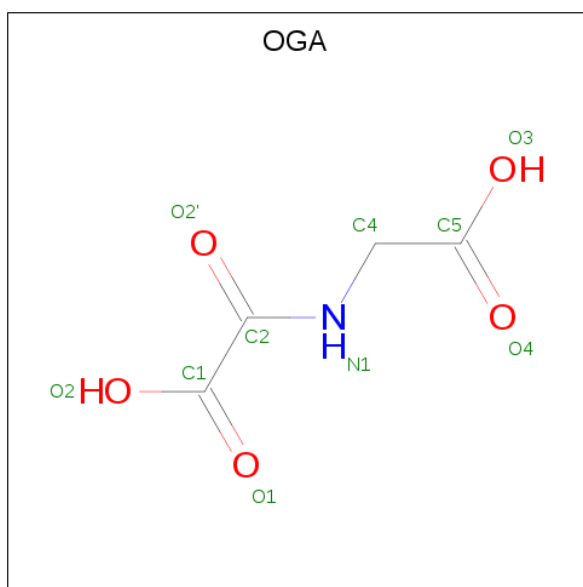
- Molecule 2 is a protein called ACA-LYS-ASP-GLY-LEU-GLY-GLU-TYR-THR-CYS-THR-SER-LEU-GLU-GLY-PHE-GLU.

Mol	Chain	Residues	Atoms					ZeroOcc	AltConf	Trace
			Total	C	N	O	S			
2	C	17	127	79	18	29	1	0	1	0

- Molecule 3 is MANGANESE (II) ION (three-letter code: MN) (formula: Mn).

Mol	Chain	Residues	Atoms		ZeroOcc	AltConf
			Total	Mn		
3	B	1	1	1	0	0
3	A	1	1	1	0	0

- Molecule 4 is N-OXALYLGLYCINE (three-letter code: OGA) (formula: C₄H₅NO₅).



Mol	Chain	Residues	Atoms				ZeroOcc	AltConf
4	A	1	Total	C	N	O	0	0
			10	4	1	5		
4	B	1	Total	C	N	O	0	0
			10	4	1	5		

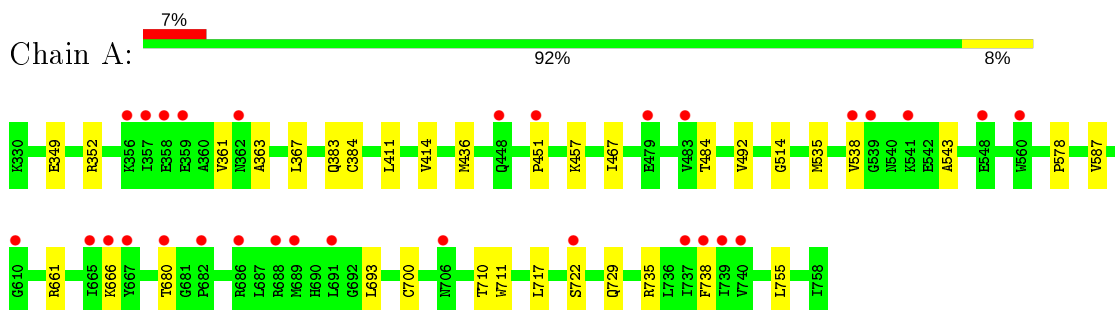
- Molecule 5 is water.

Mol	Chain	Residues	Atoms		ZeroOcc	AltConf
5	A	119	Total	O	0	0
			119	119		
5	B	107	Total	O	0	0
			107	107		
5	C	4	Total	O	0	0
			4	4		

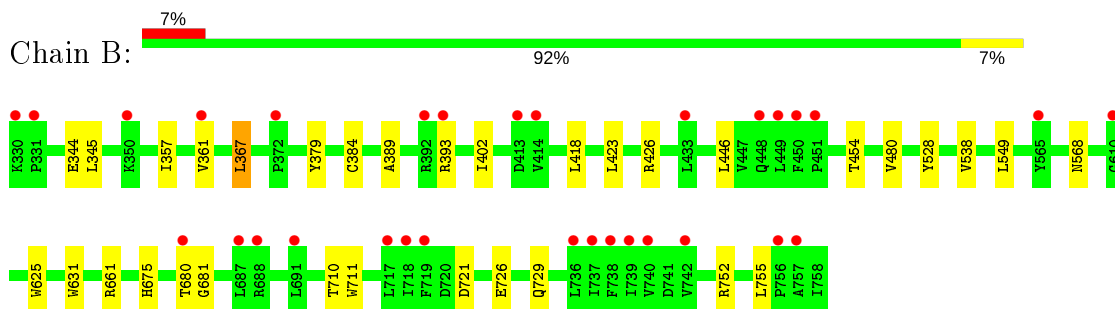
3 Residue-property plots [i](#)

These plots are drawn for all protein, RNA and DNA chains in the entry. The first graphic for a chain summarises the proportions of the various outlier classes displayed in the second graphic. The second graphic shows the sequence view annotated by issues in geometry and electron density. Residues are color-coded according to the number of geometric quality criteria for which they contain at least one outlier: green = 0, yellow = 1, orange = 2 and red = 3 or more. A red dot above a residue indicates a poor fit to the electron density ($RSRZ > 2$). Stretches of 2 or more consecutive residues without any outlier are shown as a green connector. Residues present in the sample, but not in the model, are shown in grey.

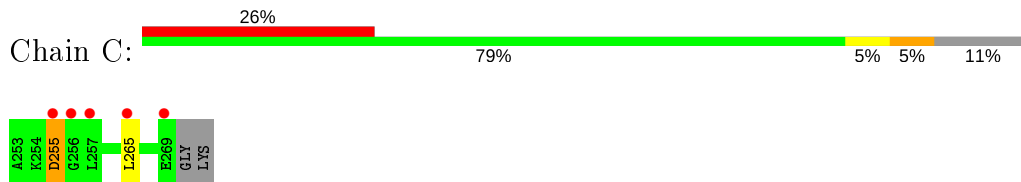
- Molecule 1: Aspartyl/asparaginyl beta-hydroxylase



- Molecule 1: Aspartyl/asparaginyl beta-hydroxylase



- Molecule 2: ACA-LYS-ASP-GLY-LEU-GLY-GLU-TYR-THR-CYS-THR-SER-LEU-GLU-GLY-PHE-GLU



4 Data and refinement statistics

Property	Value	Source
Space group	P 1	Depositor
Cell constants a, b, c, α , β , γ	49.47Å 59.24Å 95.67Å 103.97° 91.49° 92.70°	Depositor
Resolution (Å)	32.00 – 2.29 32.00 – 2.29	Depositor EDS
% Data completeness (in resolution range)	99.2 (32.00-2.29) 99.2 (32.00-2.29)	Depositor EDS
R_{merge}	0.15	Depositor
R_{sym}	(Not available)	Depositor
$\langle I/\sigma(I) \rangle$ ¹	1.39 (at 2.29Å)	Xtrriage
Refinement program	PHENIX	Depositor
R, R_{free}	0.211 , 0.235 0.214 , 0.239	Depositor DCC
R_{free} test set	1965 reflections (4.19%)	wwPDB-VP
Wilson B-factor (Å ²)	39.5	Xtrriage
Anisotropy	0.342	Xtrriage
Bulk solvent k_{sol} (e/Å ³), B_{sol} (Å ²)	0.32 , 37.6	EDS
L-test for twinning ²	$\langle L \rangle = 0.48$, $\langle L^2 \rangle = 0.31$	Xtrriage
Estimated twinning fraction	No twinning to report.	Xtrriage
F_o, F_c correlation	0.94	EDS
Total number of atoms	7223	wwPDB-VP
Average B, all atoms (Å ²)	54.0	wwPDB-VP

Xtrriage's analysis on translational NCS is as follows: *The largest off-origin peak in the Patterson function is 6.11% of the height of the origin peak. No significant pseudotranslation is detected.*

¹Intensities estimated from amplitudes.

²Theoretical values of $\langle |L| \rangle$, $\langle L^2 \rangle$ for acentric reflections are 0.5, 0.333 respectively for untwinned datasets, and 0.375, 0.2 for perfectly twinned datasets.

5 Model quality [i](#)

5.1 Standard geometry [i](#)

Bond lengths and bond angles in the following residue types are not validated in this section: DAL, MN, OGA

The Z score for a bond length (or angle) is the number of standard deviations the observed value is removed from the expected value. A bond length (or angle) with $|Z| > 5$ is considered an outlier worth inspection. RMSZ is the root-mean-square of all Z scores of the bond lengths (or angles).

Mol	Chain	Bond lengths		Bond angles	
		RMSZ	# Z >5	RMSZ	# Z >5
1	A	0.25	0/3496	0.42	0/4732
1	B	0.26	0/3512	0.42	0/4745
2	C	0.30	0/126	0.54	0/168
All	All	0.26	0/7134	0.42	0/9645

There are no bond length outliers.

There are no bond angle outliers.

There are no chirality outliers.

There are no planarity outliers.

5.2 Too-close contacts [i](#)

In the following table, the Non-H and H(model) columns list the number of non-hydrogen atoms and hydrogen atoms in the chain respectively. The H(added) column lists the number of hydrogen atoms added and optimized by MolProbity. The Clashes column lists the number of clashes within the asymmetric unit, whereas Symm-Clashes lists symmetry related clashes.

Mol	Chain	Non-H	H(model)	H(added)	Clashes	Symm-Clashes
1	A	3414	0	3317	21	0
1	B	3430	0	3369	18	0
2	C	127	0	114	2	0
3	A	1	0	0	0	0
3	B	1	0	0	0	0
4	A	10	0	3	1	0
4	B	10	0	3	1	0
5	A	119	0	0	1	0
5	B	107	0	0	0	0
5	C	4	0	0	0	0
All	All	7223	0	6806	39	0

The all-atom clashscore is defined as the number of clashes found per 1000 atoms (including hydrogen atoms). The all-atom clashscore for this structure is 3.

All (39) close contacts within the same asymmetric unit are listed below, sorted by their clash magnitude.

Atom-1	Atom-2	Interatomic distance (Å)	Clash overlap (Å)
1:B:661:ARG:NH2	1:B:752:ARG:O	2.22	0.73
1:A:735:ARG:NH1	4:A:802:OGA:O3	2.26	0.68
1:B:661:ARG:NH1	1:B:755:LEU:O	2.27	0.67
1:B:361:VAL:HG22	1:B:384:CYS:HB3	1.76	0.66
1:B:680:THR:HG22	1:B:681:GLY:O	1.98	0.63
1:A:436:MET:CE	2:C:265:LEU:HD12	2.34	0.58
1:B:345:LEU:HD23	1:B:367:LEU:CD2	2.35	0.56
1:A:361:VAL:HG22	1:A:384:CYS:HB3	1.86	0.56
1:B:538:VAL:HG12	1:B:538:VAL:O	2.06	0.55
1:A:349:GLU:OE2	1:A:352:ARG:NH1	2.41	0.53
1:A:467:ILE:O	1:A:467:ILE:HG22	2.09	0.52
1:B:345:LEU:HD23	1:B:367:LEU:HD23	1.90	0.52
1:A:710:THR:HG22	1:A:711:TRP:N	2.25	0.51
1:A:383:GLN:NE2	5:A:907:HOH:O	2.44	0.51
1:B:423:LEU:HB2	1:B:446:LEU:HD21	1.93	0.51
1:A:451:PRO:O	1:A:457:LYS:NZ	2.44	0.50
1:B:389:ALA:O	1:B:393:ARG:N	2.45	0.50
1:A:700:CYS:O	1:A:710:THR:HG23	2.11	0.49
1:B:528:TYR:HE1	1:B:549:LEU:HD22	1.77	0.48
1:B:357:ILE:O	1:B:361:VAL:HG23	2.14	0.47
1:A:666:LYS:NZ	2:C:255[B]:ASP:OD1	2.39	0.47
1:B:710:THR:HG22	1:B:711:TRP:N	2.31	0.46
1:A:363:ALA:O	1:A:367:LEU:HD13	2.16	0.45
1:B:675:HIS:NE2	1:B:726:GLU:OE2	2.50	0.45
1:B:625:TRP:CZ2	4:B:802:OGA:H4C1	2.53	0.44
1:A:578:PRO:HB3	1:A:587:VAL:HG21	2.00	0.44
1:A:710:THR:HG22	1:A:711:TRP:H	1.81	0.44
1:B:402:ILE:HG23	1:B:426:ARG:HG3	2.00	0.43
1:A:538:VAL:HG12	1:A:538:VAL:O	2.19	0.42
1:A:661:ARG:NH1	1:A:755:LEU:O	2.44	0.42
1:A:710:THR:O	1:A:717:LEU:HD11	2.20	0.42
1:A:411:LEU:O	1:A:414:VAL:HG23	2.20	0.41
1:B:454:THR:CG2	1:B:480:VAL:HG13	2.50	0.41
1:A:535:MET:HB2	1:A:543:ALA:HB2	2.01	0.41
1:B:379:TYR:CG	1:B:418:LEU:HD11	2.56	0.41
1:A:680:THR:HG23	1:A:722:SER:O	2.21	0.41
1:A:693:LEU:HD11	1:A:738:PHE:HB2	2.02	0.41

Continued on next page...

Continued from previous page...

Atom-1	Atom-2	Interatomic distance (Å)	Clash overlap (Å)
1:B:344:GLU:HB3	1:B:367:LEU:HD11	2.03	0.40
1:A:492:VAL:HG13	1:A:514:GLY:HA3	2.02	0.40

There are no symmetry-related clashes.

5.3 Torsion angles [i](#)

5.3.1 Protein backbone [i](#)

In the following table, the Percentiles column shows the percent Ramachandran outliers of the chain as a percentile score with respect to all X-ray entries followed by that with respect to entries of similar resolution.

The Analysed column shows the number of residues for which the backbone conformation was analysed, and the total number of residues.

Mol	Chain	Analysed	Favoured	Allowed	Outliers	Percentiles	
1	A	427/429 (100%)	419 (98%)	8 (2%)	0	100	100
1	B	427/429 (100%)	418 (98%)	9 (2%)	0	100	100
2	C	16/19 (84%)	13 (81%)	3 (19%)	0	100	100
All	All	870/877 (99%)	850 (98%)	20 (2%)	0	100	100

There are no Ramachandran outliers to report.

5.3.2 Protein sidechains [i](#)

In the following table, the Percentiles column shows the percent sidechain outliers of the chain as a percentile score with respect to all X-ray entries followed by that with respect to entries of similar resolution.

The Analysed column shows the number of residues for which the sidechain conformation was analysed, and the total number of residues.

Mol	Chain	Analysed	Rotameric	Outliers	Percentiles	
1	A	356/371 (96%)	354 (99%)	2 (1%)	86	94
1	B	358/371 (96%)	353 (99%)	5 (1%)	67	81
2	C	13/14 (93%)	11 (85%)	2 (15%)	2	2
All	All	727/756 (96%)	718 (99%)	9 (1%)	73	84

All (9) residues with a non-rotameric sidechain are listed below:

Mol	Chain	Res	Type
1	A	484	THR
1	A	729	GLN
1	B	367	LEU
1	B	568	ASN
1	B	631	TRP
1	B	721	ASP
1	B	729	GLN
2	C	255[A]	ASP
2	C	255[B]	ASP

Some sidechains can be flipped to improve hydrogen bonding and reduce clashes. There are no such sidechains identified.

5.3.3 RNA [i](#)

There are no RNA molecules in this entry.

5.4 Non-standard residues in protein, DNA, RNA chains [i](#)

1 non-standard protein/DNA/RNA residue is modelled in this entry.

In the following table, the Counts columns list the number of bonds (or angles) for which Mogul statistics could be retrieved, the number of bonds (or angles) that are observed in the model and the number of bonds (or angles) that are defined in the Chemical Component Dictionary. The Link column lists molecule types, if any, to which the group is linked. The Z score for a bond length (or angle) is the number of standard deviations the observed value is removed from the expected value. A bond length (or angle) with $|Z| > 2$ is considered an outlier worth inspection. RMSZ is the root-mean-square of all Z scores of the bond lengths (or angles).

Mol	Type	Chain	Res	Link	Bond lengths			Bond angles		
					Counts	RMSZ	$\# Z > 2$	Counts	RMSZ	$\# Z > 2$
2	DAL	C	253	2	3,4,5	0.47	0	2,4,6	1.05	0

In the following table, the Chirals column lists the number of chiral outliers, the number of chiral centers analysed, the number of these observed in the model and the number defined in the Chemical Component Dictionary. Similar counts are reported in the Torsion and Rings columns. '-' means no outliers of that kind were identified.

Mol	Type	Chain	Res	Link	Chirals	Torsions	Rings
2	DAL	C	253	2	-	0/0/2/4	-

There are no bond length outliers.

There are no bond angle outliers.

There are no chirality outliers.

There are no torsion outliers.

There are no ring outliers.

No monomer is involved in short contacts.

5.5 Carbohydrates [i](#)

There are no carbohydrates in this entry.

5.6 Ligand geometry [i](#)

Of 4 ligands modelled in this entry, 2 are monoatomic - leaving 2 for Mogul analysis.

In the following table, the Counts columns list the number of bonds (or angles) for which Mogul statistics could be retrieved, the number of bonds (or angles) that are observed in the model and the number of bonds (or angles) that are defined in the Chemical Component Dictionary. The Link column lists molecule types, if any, to which the group is linked. The Z score for a bond length (or angle) is the number of standard deviations the observed value is removed from the expected value. A bond length (or angle) with $|Z| > 2$ is considered an outlier worth inspection. RMSZ is the root-mean-square of all Z scores of the bond lengths (or angles).

Mol	Type	Chain	Res	Link	Bond lengths			Bond angles		
					Counts	RMSZ	# Z > 2	Counts	RMSZ	# Z > 2
4	OGA	B	802	3	3,9,9	3.17	1 (33%)	4,11,11	1.17	1 (25%)
4	OGA	A	802	3	3,9,9	3.22	2 (66%)	4,11,11	1.15	1 (25%)

In the following table, the Chirals column lists the number of chiral outliers, the number of chiral centers analysed, the number of these observed in the model and the number defined in the Chemical Component Dictionary. Similar counts are reported in the Torsion and Rings columns. '-' means no outliers of that kind were identified.

Mol	Type	Chain	Res	Link	Chirals	Torsions	Rings
4	OGA	B	802	3	-	0/3/9/9	-
4	OGA	A	802	3	-	0/3/9/9	-

All (3) bond length outliers are listed below:

Mol	Chain	Res	Type	Atoms	Z	Observed(Å)	Ideal(Å)
4	A	802	OGA	C2-N1	5.14	1.45	1.33

Continued on next page...

Continued from previous page...

Mol	Chain	Res	Type	Atoms	Z	Observed(Å)	Ideal(Å)
4	B	802	OGA	C2-N1	5.03	1.44	1.33
4	A	802	OGA	O2'-C2	-2.02	1.19	1.23

All (2) bond angle outliers are listed below:

Mol	Chain	Res	Type	Atoms	Z	Observed(°)	Ideal(°)
4	B	802	OGA	C5-C4-N1	-2.13	106.32	110.43
4	A	802	OGA	C5-C4-N1	-2.06	106.46	110.43

There are no chirality outliers.

There are no torsion outliers.

There are no ring outliers.

2 monomers are involved in 2 short contacts:

Mol	Chain	Res	Type	Clashes	Symm-Clashes
4	B	802	OGA	1	0
4	A	802	OGA	1	0

5.7 Other polymers [i](#)

There are no such residues in this entry.

5.8 Polymer linkage issues [i](#)

There are no chain breaks in this entry.

6 Fit of model and data [i](#)

6.1 Protein, DNA and RNA chains [i](#)

In the following table, the column labelled ‘#RSRZ > 2’ contains the number (and percentage) of RSRZ outliers, followed by percent RSRZ outliers for the chain as percentile scores relative to all X-ray entries and entries of similar resolution. The OWAB column contains the minimum, median, 95th percentile and maximum values of the occupancy-weighted average B-factor per residue. The column labelled ‘Q < 0.9’ lists the number of (and percentage) of residues with an average occupancy less than 0.9.

Mol	Chain	Analysed	<RSRZ>	#RSRZ > 2	OWAB(Å ²)	Q < 0.9
1	A	429/429 (100%)	0.41	30 (6%) 16 21	28, 50, 75, 97	0
1	B	429/429 (100%)	0.54	31 (7%) 15 20	27, 56, 88, 112	0
2	C	16/19 (84%)	1.61	5 (31%) 0 0	47, 64, 78, 79	0
All	All	874/877 (99%)	0.50	66 (7%) 13 18	27, 53, 84, 112	0

All (66) RSRZ outliers are listed below:

Mol	Chain	Res	Type	RSRZ
1	B	737	ILE	4.7
2	C	257	LEU	4.3
1	A	357	ILE	4.2
1	A	740	VAL	3.7
1	B	331	PRO	3.7
1	B	739	ILE	3.7
1	A	739	ILE	3.6
1	B	449	LEU	3.6
1	B	688	ARG	3.6
1	B	330	LYS	3.6
1	A	738	PHE	3.4
1	A	737	ILE	3.4
1	B	740	VAL	3.3
1	A	680	THR	3.3
1	B	451	PRO	3.3
1	B	719	PHE	3.1
1	B	392	ARG	3.1
2	C	269	GLU	3.1
2	C	255[A]	ASP	3.1
1	A	359	GLU	3.1
1	B	757	ALA	3.0
1	A	688	ARG	3.0
1	A	560	TRP	3.0

Continued on next page...

Continued from previous page...

Mol	Chain	Res	Type	RSRZ
1	A	665	ILE	2.9
1	B	687	LEU	2.8
1	A	541	LYS	2.8
1	B	738	PHE	2.8
1	A	358	GLU	2.8
1	B	756	PRO	2.7
1	B	393	ARG	2.7
1	A	689	MET	2.7
1	A	539	GLY	2.7
1	B	413	ASP	2.7
1	B	610	GLY	2.7
1	A	706	ASN	2.7
2	C	256	GLY	2.6
1	A	479	GLU	2.6
1	B	691	LEU	2.5
1	A	667	TYR	2.5
1	B	450	PHE	2.5
1	A	666	LYS	2.4
1	B	414	VAL	2.4
1	B	717	LEU	2.4
1	B	372	PRO	2.4
1	B	361	VAL	2.4
1	A	610	GLY	2.4
2	C	265	LEU	2.4
1	A	722	SER	2.4
1	B	718	ILE	2.3
1	A	362	ASN	2.3
1	A	691	LEU	2.3
1	A	483	VAL	2.3
1	B	680	THR	2.3
1	A	682	PRO	2.3
1	B	448	GLN	2.2
1	B	742	VAL	2.2
1	A	356	LYS	2.2
1	B	350	LYS	2.2
1	B	565	TYR	2.2
1	A	548	GLU	2.2
1	B	736	LEU	2.1
1	B	433	LEU	2.1
1	A	451	PRO	2.0
1	A	538	VAL	2.0
1	A	448	GLN	2.0

Continued on next page...

Continued from previous page...

Mol	Chain	Res	Type	RSRZ
1	A	686	ARG	2.0

6.2 Non-standard residues in protein, DNA, RNA chains [i](#)

In the following table, the Atoms column lists the number of modelled atoms in the group and the number defined in the chemical component dictionary. The B-factors column lists the minimum, median, 95th percentile and maximum values of B factors of atoms in the group. The column labelled 'Q< 0.9' lists the number of atoms with occupancy less than 0.9.

Mol	Type	Chain	Res	Atoms	RSCC	RSR	B-factors(Å ²)	Q<0.9
2	DAL	C	253	5/6	0.84	0.26	37,39,46,47	0

6.3 Carbohydrates [i](#)

There are no carbohydrates in this entry.

6.4 Ligands [i](#)

In the following table, the Atoms column lists the number of modelled atoms in the group and the number defined in the chemical component dictionary. The B-factors column lists the minimum, median, 95th percentile and maximum values of B factors of atoms in the group. The column labelled 'Q< 0.9' lists the number of atoms with occupancy less than 0.9.

Mol	Type	Chain	Res	Atoms	RSCC	RSR	B-factors(Å ²)	Q<0.9
4	OGA	A	802	10/10	0.85	0.28	43,45,46,46	0
4	OGA	B	802	10/10	0.93	0.17	37,40,40,40	0
3	MN	A	801	1/1	0.97	0.16	49,49,49,49	0
3	MN	B	801	1/1	0.99	0.07	38,38,38,38	0

6.5 Other polymers [i](#)

There are no such residues in this entry.