



Full wwPDB X-ray Structure Validation Report ⓘ

Sep 1, 2022 – 01:15 PM EDT

PDB ID : 5RMG
Title : PanDDA analysis group deposition – Crystal Structure of SARS-CoV-2 heli-
case in complex with Z285675722
Authors : Newman, J.A.; Yosaatmadja, Y.; Douangamath, A.; Aimon, A.; Powell, A.J.;
Dias, A.; Fearon, D.; Dunnett, L.; Brandao-Neto, J.; Krojer, T.; Skyner, R.;
Gorrie-Stone, T.; Thompson, W.; von Delft, F.; Arrowsmith, C.H.; Edwards,
A.; Bountra, C.; Gileadi, O.
Deposited on : 2020-09-16
Resolution : 2.12 Å(reported)

This is a Full wwPDB X-ray Structure Validation Report for a publicly released PDB entry.

We welcome your comments at validation@mail.wwpdb.org
A user guide is available at
<https://www.wwpdb.org/validation/2017/XrayValidationReportHelp>
with specific help available everywhere you see the ⓘ symbol.

The types of validation reports are described at <http://www.wwpdb.org/validation/2017/FAQs#types>.

The following versions of software and data (see [references](#) ①) were used in the production of this report:

MolProbity : 4.02b-467
Mogul : 1.8.5 (274361), CSD as541be (2020)
Xtrriage (Phenix) : 1.13
EDS : 2.29
buster-report : 1.1.7 (2018)
Percentile statistics : 20191225.v01 (using entries in the PDB archive December 25th 2019)
Refmac : 5.8.0158
CCP4 : 7.0.044 (Gargrove)
Ideal geometry (proteins) : Engh & Huber (2001)
Ideal geometry (DNA, RNA) : Parkinson et al. (1996)
Validation Pipeline (wwPDB-VP) : 2.29

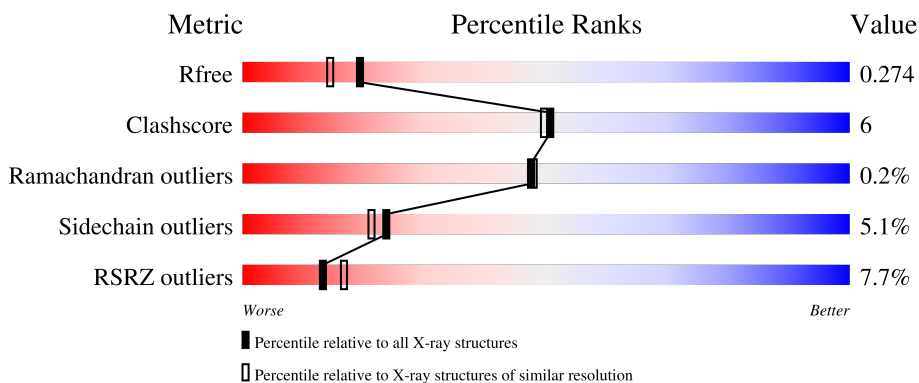
1 Overall quality at a glance i

The following experimental techniques were used to determine the structure:

X-RAY DIFFRACTION

The reported resolution of this entry is 2.12 Å.

Percentile scores (ranging between 0-100) for global validation metrics of the entry are shown in the following graphic. The table shows the number of entries on which the scores are based.



Metric	Whole archive (#Entries)	Similar resolution (#Entries, resolution range(Å))
R_{free}	130704	6241 (2.14-2.10)
Clashscore	141614	6778 (2.14-2.10)
Ramachandran outliers	138981	6705 (2.14-2.10)
Sidechain outliers	138945	6706 (2.14-2.10)
RSRZ outliers	127900	6112 (2.14-2.10)

The table below summarises the geometric issues observed across the polymeric chains and their fit to the electron density. The red, orange, yellow and green segments of the lower bar indicate the fraction of residues that contain outliers for ≥ 3 , 2, 1 and 0 types of geometric quality criteria respectively. A grey segment represents the fraction of residues that are not modelled. The numeric value for each fraction is indicated below the corresponding segment, with a dot representing fractions $\leq 5\%$. The upper red bar (where present) indicates the fraction of residues that have poor fit to the electron density. The numeric value is given above the bar.

Mol	Chain	Length	Quality of chain
1	A	601	<div style="display: flex; align-items: center;"> <div style="width: 13%; height: 10px; background-color: red; margin-right: 5px;"></div> <div style="width: 80%; height: 10px; background-color: green; margin-right: 5px;"></div> <div style="width: 14%; height: 10px; background-color: yellow; margin-right: 5px;"></div> <div style="width: 5%; height: 10px; background-color: grey;"></div> </div>
1	B	601	<div style="display: flex; align-items: center;"> <div style="width: 2%; height: 10px; background-color: red; margin-right: 5px;"></div> <div style="width: 83%; height: 10px; background-color: green; margin-right: 5px;"></div> <div style="width: 13%; height: 10px; background-color: yellow; margin-right: 5px;"></div> <div style="width: 5%; height: 10px; background-color: grey;"></div> </div>

2 Entry composition [i](#)

There are 5 unique types of molecules in this entry. The entry contains 9421 atoms, of which 0 are hydrogens and 0 are deuteriums.

In the tables below, the ZeroOcc column contains the number of atoms modelled with zero occupancy, the AltConf column contains the number of residues with at least one atom in alternate conformation and the Trace column contains the number of residues modelled with at most 2 atoms.

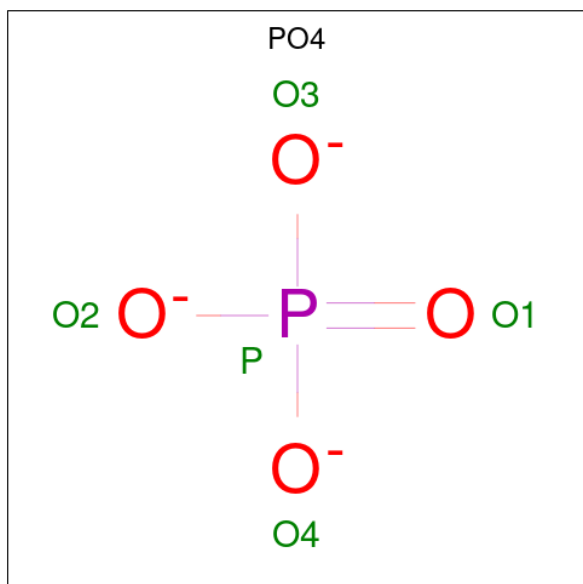
- Molecule 1 is a protein called Helicase.

Mol	Chain	Residues	Atoms					ZeroOcc	AltConf	Trace
			Total	C	N	O	S			
1	A	572	Total 4417	C 2816	N 737	O 832	S 32	0	0	0
1	B	585	Total 4508	C 2875	N 750	O 848	S 35	0	1	0

- Molecule 2 is ZINC ION (three-letter code: ZN) (formula: Zn).

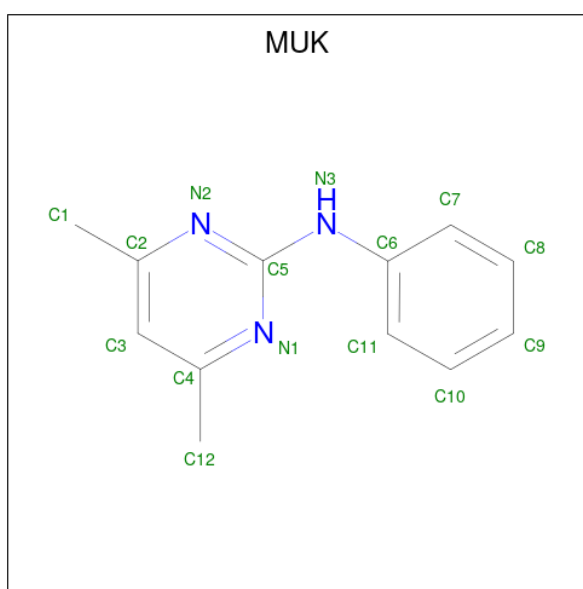
Mol	Chain	Residues	Atoms		ZeroOcc	AltConf
2	A	3	Total 3	Zn 3	0	0
2	B	3	Total 3	Zn 3	0	0

- Molecule 3 is PHOSPHATE ION (three-letter code: PO4) (formula: O₄P).



Mol	Chain	Residues	Atoms	ZeroOcc	AltConf
3	A	1	Total O P 5 4 1	0	0
3	A	1	Total O P 5 4 1	0	0
3	B	1	Total O P 5 4 1	0	0
3	B	1	Total O P 5 4 1	0	0

- Molecule 4 is 4,6-dimethyl- {N}-phenyl-pyrimidin-2-amine (three-letter code: MUK) (formula: C₁₂H₁₃N₃) (labeled as "Ligand of Interest" by depositor).



Mol	Chain	Residues	Atoms	ZeroOcc	AltConf
4	B	1	Total C N 15 12 3	0	0

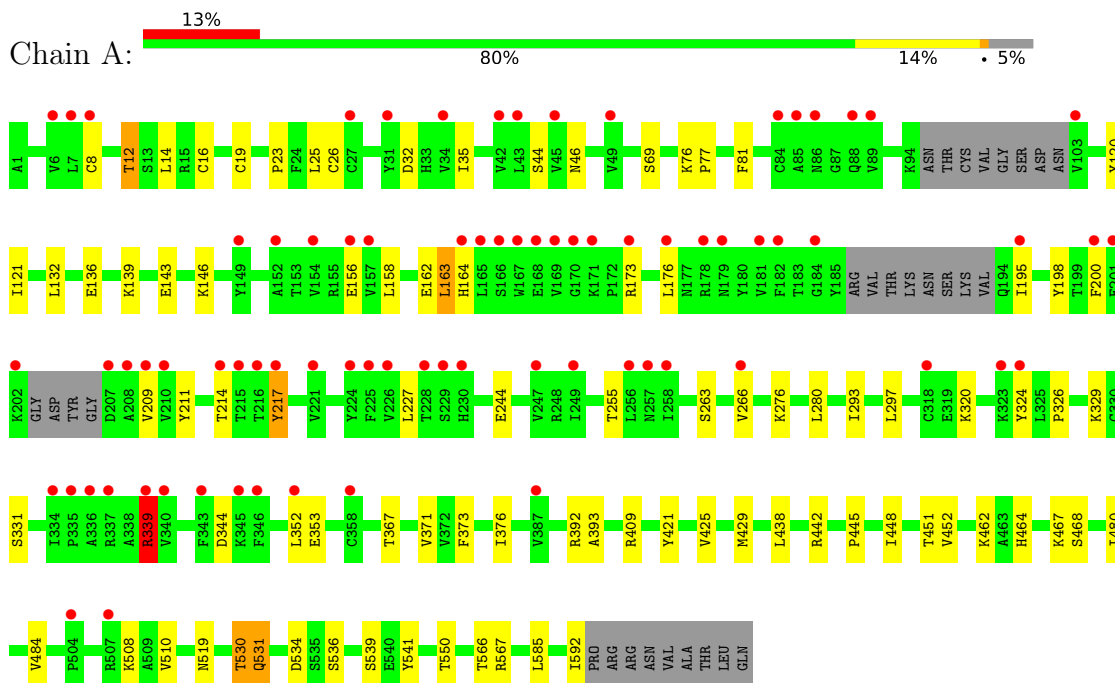
- Molecule 5 is water.

Mol	Chain	Residues	Atoms	ZeroOcc	AltConf
5	A	205	Total O 205 205	0	0
5	B	250	Total O 250 250	0	0

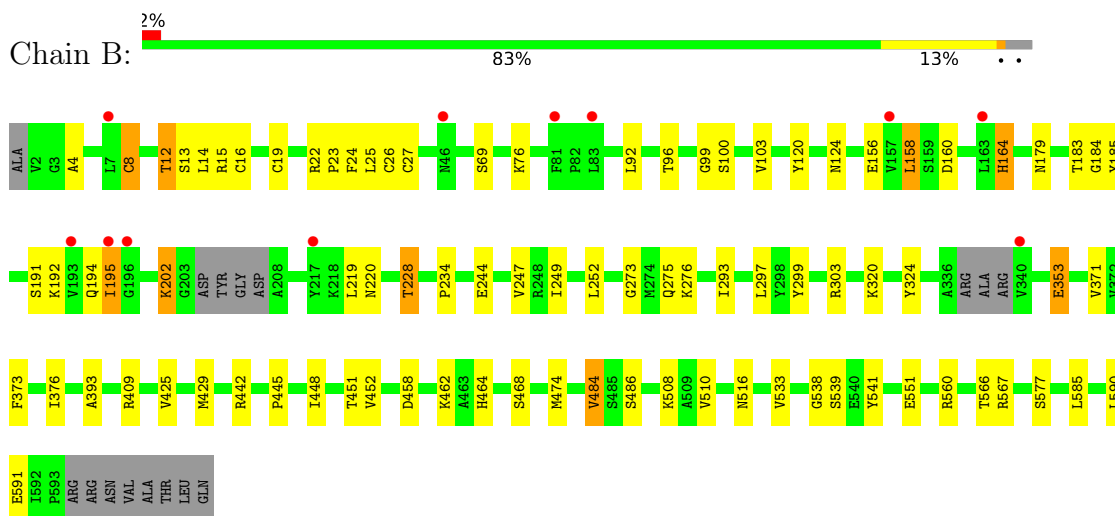
3 Residue-property plots [i](#)

These plots are drawn for all protein, RNA, DNA and oligosaccharide chains in the entry. The first graphic for a chain summarises the proportions of the various outlier classes displayed in the second graphic. The second graphic shows the sequence view annotated by issues in geometry and electron density. Residues are color-coded according to the number of geometric quality criteria for which they contain at least one outlier: green = 0, yellow = 1, orange = 2 and red = 3 or more. A red dot above a residue indicates a poor fit to the electron density ($RSRZ > 2$). Stretches of 2 or more consecutive residues without any outlier are shown as a green connector. Residues present in the sample, but not in the model, are shown in grey.

- Molecule 1: Helicase



- Molecule 1: Helicase



4 Data and refinement statistics

Property	Value	Source
Space group	P 1	Depositor
Cell constants a, b, c, α , β , γ	59.03Å 70.15Å 85.41Å 103.02° 96.17° 112.22°	Depositor
Resolution (Å)	81.29 – 2.12 81.29 – 2.11	Depositor EDS
% Data completeness (in resolution range)	96.3 (81.29-2.12) 96.3 (81.29-2.11)	Depositor EDS
R_{merge}	0.10	Depositor
R_{sym}	(Not available)	Depositor
$\langle I/\sigma(I) \rangle$ ¹	1.07 (at 2.12Å)	Xtrriage
Refinement program	BUSTER 2.10.3 (20-MAY-2020)	Depositor
R, R_{free}	0.170 , 0.256 0.193 , 0.274	Depositor DCC
R_{free} test set	3440 reflections (5.18%)	wwPDB-VP
Wilson B-factor (Å ²)	44.9	Xtrriage
Anisotropy	0.247	Xtrriage
Bulk solvent k_{sol} (e/Å ³), B_{sol} (Å ²)	0.32 , 58.2	EDS
L-test for twinning ²	$\langle L \rangle = 0.50$, $\langle L^2 \rangle = 0.33$	Xtrriage
Estimated twinning fraction	No twinning to report.	Xtrriage
F_o, F_c correlation	0.96	EDS
Total number of atoms	9421	wwPDB-VP
Average B, all atoms (Å ²)	75.0	wwPDB-VP

Xtrriage's analysis on translational NCS is as follows: *The largest off-origin peak in the Patterson function is 6.43% of the height of the origin peak. No significant pseudotranslation is detected.*

¹Intensities estimated from amplitudes.

²Theoretical values of $\langle |L| \rangle$, $\langle L^2 \rangle$ for acentric reflections are 0.5, 0.333 respectively for untwinned datasets, and 0.375, 0.2 for perfectly twinned datasets.

5 Model quality

5.1 Standard geometry

Bond lengths and bond angles in the following residue types are not validated in this section: MUK, PO4, ZN

The Z score for a bond length (or angle) is the number of standard deviations the observed value is removed from the expected value. A bond length (or angle) with $|Z| > 5$ is considered an outlier worth inspection. RMSZ is the root-mean-square of all Z scores of the bond lengths (or angles).

Mol	Chain	Bond lengths		Bond angles	
		RMSZ	# Z >5	RMSZ	# Z >5
1	A	0.51	0/4517	0.65	0/6156
1	B	0.54	0/4610	0.65	0/6283
All	All	0.53	0/9127	0.65	0/12439

There are no bond length outliers.

There are no bond angle outliers.

There are no chirality outliers.

There are no planarity outliers.

5.2 Too-close contacts

In the following table, the Non-H and H(model) columns list the number of non-hydrogen atoms and hydrogen atoms in the chain respectively. The H(added) column lists the number of hydrogen atoms added and optimized by MolProbity. The Clashes column lists the number of clashes within the asymmetric unit, whereas Symm-Clashes lists symmetry-related clashes.

Mol	Chain	Non-H	H(model)	H(added)	Clashes	Symm-Clashes
1	A	4417	0	4322	57	0
1	B	4508	0	4425	46	0
2	A	3	0	0	0	0
2	B	3	0	0	0	0
3	A	10	0	0	0	0
3	B	10	0	0	1	0
4	B	15	0	0	1	0
5	A	205	0	0	3	0
5	B	250	0	0	1	0
All	All	9421	0	8747	101	0

The all-atom clashscore is defined as the number of clashes found per 1000 atoms (including

hydrogen atoms). The all-atom clashscore for this structure is 6.

All (101) close contacts within the same asymmetric unit are listed below, sorted by their clash magnitude.

Atom-1	Atom-2	Interatomic distance (Å)	Clash overlap (Å)
1:B:27:CYS:SG	5:B:910:HOH:O	2.00	1.08
1:A:467:LYS:NZ	5:A:801:HOH:O	1.91	1.01
1:A:352:LEU:HD11	1:B:234:PRO:HD3	1.64	0.80
1:A:163:LEU:HG	1:A:211:TYR:HB3	1.65	0.79
1:A:326:PRO:HG2	1:A:329:LYS:HZ2	1.50	0.76
1:A:331:SER:HB2	1:A:353:GLU:HG3	1.69	0.74
1:B:591:GLU:N	4:B:701:MUK:N1	2.35	0.72
1:B:13:SER:HB2	1:B:92:LEU:HB2	1.72	0.71
1:B:442:ARG:HH11	1:B:464:HIS:CE1	2.09	0.70
1:B:474[B]:MET:HG3	1:B:590:LEU:HB2	1.72	0.70
1:A:326:PRO:HD2	1:A:329:LYS:NZ	2.11	0.66
1:A:158:LEU:HD11	1:A:164:HIS:CE1	2.34	0.62
1:A:146:LYS:HE2	1:A:227:LEU:HB3	1.81	0.62
1:A:326:PRO:HG2	1:A:329:LYS:NZ	2.15	0.61
1:A:158:LEU:HD11	1:A:164:HIS:ND1	2.16	0.60
1:A:519:ASN:HB3	1:A:530:THR:CG2	2.32	0.58
1:A:445:PRO:HB3	1:A:468:SER:HB3	1.87	0.56
1:B:445:PRO:HB3	1:B:468:SER:HB3	1.87	0.55
1:B:538:GLY:HA2	3:B:706:PO4:O1	2.06	0.55
1:B:12:THR:HG21	1:B:26:CYS:HA	1.89	0.55
1:A:519:ASN:HB3	1:A:530:THR:HG21	1.87	0.55
1:B:183:THR:OG1	1:B:228:THR:OG1	2.25	0.54
1:A:139:LYS:O	1:A:143:GLU:HG2	2.08	0.54
1:A:293:ILE:HG13	1:A:320:LYS:HB3	1.90	0.54
1:A:12:THR:HG21	1:A:26:CYS:HA	1.89	0.53
1:A:120:TYR:CE2	1:A:409:ARG:HG2	2.43	0.53
1:A:132:LEU:O	1:A:136:GLU:HG3	2.08	0.53
1:A:244:GLU:HB2	1:A:276:LYS:HB2	1.89	0.53
1:B:510:VAL:HG21	1:B:541:TYR:CD1	2.44	0.53
1:B:376:ILE:HG21	1:B:429:MET:HE3	1.89	0.52
1:B:451:THR:HG21	1:B:585:LEU:HD23	1.92	0.52
1:A:297:LEU:HD11	1:A:324:TYR:HB3	1.92	0.52
1:A:451:THR:HG21	1:A:585:LEU:HD23	1.91	0.52
1:A:376:ILE:HG21	1:A:429:MET:HE3	1.92	0.52
1:B:371:VAL:HG23	1:B:393:ALA:HB2	1.92	0.51
1:B:293:ILE:HG13	1:B:320:LYS:HB3	1.92	0.51
1:B:15:ARG:HG3	1:B:24:PHE:CD2	2.44	0.51
1:B:120:TYR:CE2	1:B:409:ARG:HG2	2.44	0.51

Continued on next page...

Continued from previous page...

Atom-1	Atom-2	Interatomic distance (Å)	Clash overlap (Å)
1:A:462:LYS:NZ	5:A:805:HOH:O	2.43	0.51
1:A:19:CYS:CB	1:A:23:PRO:HD2	2.40	0.51
1:B:16:CYS:HB2	1:B:25:LEU:HD12	1.93	0.51
1:B:244:GLU:HB2	1:B:276:LYS:HB2	1.92	0.51
1:A:480:ILE:HG21	1:A:550:THR:HG22	1.94	0.50
1:B:19:CYS:CB	1:B:23:PRO:HD2	2.40	0.50
1:B:156:GLU:HB3	1:B:164:HIS:HB2	1.93	0.49
1:A:531:GLN:HG2	1:A:536:SER:HB3	1.94	0.49
1:A:371:VAL:HG23	1:A:393:ALA:HB2	1.94	0.49
1:B:158:LEU:HD13	1:B:164:HIS:ND1	2.27	0.48
1:A:510:VAL:HG21	1:A:541:TYR:CD1	2.49	0.48
1:A:326:PRO:CD	1:A:329:LYS:NZ	2.76	0.48
1:A:195:ILE:HB	1:A:217:TYR:HD2	1.78	0.48
1:A:280:LEU:HD11	1:A:438:LEU:HG	1.96	0.48
1:B:297:LEU:HD11	1:B:324:TYR:HB3	1.95	0.48
1:A:176:LEU:HD22	1:A:200:PHE:HB2	1.95	0.47
1:A:16:CYS:HB2	1:A:25:LEU:HD12	1.96	0.47
1:A:198:TYR:HE2	1:A:211:TYR:HD1	1.62	0.47
1:A:326:PRO:CG	1:A:329:LYS:NZ	2.77	0.47
1:B:252:LEU:HB3	1:B:299:TYR:CD1	2.50	0.46
1:A:442:ARG:HH11	1:A:464:HIS:CE1	2.33	0.46
1:B:158:LEU:CD1	1:B:164:HIS:ND1	2.78	0.46
1:A:163:LEU:CG	1:A:211:TYR:HB3	2.42	0.46
1:B:551:GLU:HG3	1:B:577:SER:HB3	1.97	0.45
1:B:8:CYS:SG	1:B:99:GLY:N	2.89	0.45
1:B:12:THR:OG1	1:B:26:CYS:HA	2.17	0.44
1:B:185:TYR:CE2	1:B:194:GLN:HG2	2.52	0.44
1:B:303:ARG:NH1	1:B:353:GLU:O	2.51	0.44
1:B:195:ILE:HG23	1:B:195:ILE:O	2.18	0.44
1:B:249:ILE:HG23	1:B:273:GLY:HA3	2.00	0.44
1:B:539:SER:O	1:B:567:ARG:HD3	2.18	0.44
1:B:184:GLY:HA3	1:B:195:ILE:HG22	1.99	0.43
1:B:462:LYS:HA	1:B:462:LYS:HD3	1.87	0.43
1:A:352:LEU:CD1	1:B:234:PRO:HD3	2.42	0.43
1:B:8:CYS:SG	1:B:99:GLY:O	2.76	0.43
1:A:77:PRO:HB2	5:A:880:HOH:O	2.19	0.43
1:A:263:SER:HA	1:A:266:VAL:HG13	2.00	0.42
1:B:16:CYS:O	1:B:22:ARG:HA	2.18	0.42
1:A:214:THR:HB	1:A:339:ARG:O	2.20	0.42
1:A:367:THR:HG22	1:A:392:ARG:HB3	2.00	0.42
1:B:4:ALA:O	1:B:24:PHE:HB2	2.20	0.42

Continued on next page...

Continued from previous page...

Atom-1	Atom-2	Interatomic distance (Å)	Clash overlap (Å)
1:A:121:ILE:HG23	1:A:421:TYR:CE1	2.55	0.42
1:A:508:LYS:HB2	1:A:508:LYS:HE3	1.84	0.42
1:A:163:LEU:HD11	1:A:200:PHE:HE2	1.84	0.42
1:A:462:LYS:HA	1:A:462:LYS:HD3	1.88	0.42
1:B:376:ILE:HG12	1:B:425:VAL:HG11	2.02	0.42
1:A:12:THR:OG1	1:A:26:CYS:HA	2.20	0.41
1:A:158:LEU:HD12	1:A:162:GLU:HB3	2.02	0.41
1:A:445:PRO:HG2	1:A:448:ILE:HD12	2.03	0.41
1:A:539:SER:O	1:A:567:ARG:HD3	2.21	0.41
1:B:12:THR:CG2	1:B:26:CYS:HA	2.51	0.41
1:B:202:LYS:HZ1	1:B:484:VAL:HG22	1.85	0.41
1:A:19:CYS:HB2	1:A:23:PRO:HD2	2.01	0.41
1:A:326:PRO:HD2	1:A:329:LYS:HZ3	1.84	0.41
1:A:376:ILE:HD12	1:A:376:ILE:HA	1.97	0.41
1:B:445:PRO:HG2	1:B:448:ILE:HD12	2.02	0.41
1:A:14:LEU:HB2	1:A:25:LEU:O	2.21	0.41
1:B:533:VAL:HG11	1:B:560:ARG:O	2.20	0.40
1:A:452:VAL:HG11	1:A:566:THR:HG23	2.02	0.40
1:B:14:LEU:HB2	1:B:25:LEU:O	2.21	0.40
1:A:480:ILE:CG2	1:A:550:THR:HG22	2.51	0.40
1:A:376:ILE:HG12	1:A:425:VAL:HG11	2.03	0.40
1:B:452:VAL:HG11	1:B:566:THR:HG23	2.03	0.40

There are no symmetry-related clashes.

5.3 Torsion angles [i](#)

5.3.1 Protein backbone [i](#)

In the following table, the Percentiles column shows the percent Ramachandran outliers of the chain as a percentile score with respect to all X-ray entries followed by that with respect to entries of similar resolution.

The Analysed column shows the number of residues for which the backbone conformation was analysed, and the total number of residues.

Mol	Chain	Analysed	Favoured	Allowed	Outliers	Percentiles
1	A	564/601 (94%)	543 (96%)	19 (3%)	2 (0%)	34 32
1	B	580/601 (96%)	557 (96%)	23 (4%)	0	100 100
All	All	1144/1202 (95%)	1100 (96%)	42 (4%)	2 (0%)	47 48

All (2) Ramachandran outliers are listed below:

Mol	Chain	Res	Type
1	A	484	VAL
1	A	339	ARG

5.3.2 Protein sidechains [i](#)

In the following table, the Percentiles column shows the percent sidechain outliers of the chain as a percentile score with respect to all X-ray entries followed by that with respect to entries of similar resolution.

The Analysed column shows the number of residues for which the sidechain conformation was analysed, and the total number of residues.

Mol	Chain	Analysed	Rotameric	Outliers	Percentiles	
1	A	485/523 (93%)	463 (96%)	22 (4%)	27	26
1	B	498/523 (95%)	470 (94%)	28 (6%)	21	18
All	All	983/1046 (94%)	933 (95%)	50 (5%)	24	21

All (50) residues with a non-rotameric sidechain are listed below:

Mol	Chain	Res	Type
1	A	8	CYS
1	A	12	THR
1	A	32	ASP
1	A	35	ILE
1	A	44	SER
1	A	46	ASN
1	A	69	SER
1	A	76	LYS
1	A	81	PHE
1	A	156	GLU
1	A	163	LEU
1	A	173	ARG
1	A	209	VAL
1	A	217	TYR
1	A	255	THR
1	A	339	ARG
1	A	344	ASP
1	A	373	PHE
1	A	530	THR
1	A	531	GLN
1	A	534	ASP

Continued on next page...

Continued from previous page...

Mol	Chain	Res	Type
1	A	592	ILE
1	B	8	CYS
1	B	12	THR
1	B	69	SER
1	B	76	LYS
1	B	96	THR
1	B	100	SER
1	B	103	VAL
1	B	124	ASN
1	B	158	LEU
1	B	160	ASP
1	B	164	HIS
1	B	179	ASN
1	B	191	SER
1	B	192	LYS
1	B	195	ILE
1	B	202	LYS
1	B	219	LEU
1	B	220	ASN
1	B	228	THR
1	B	247	VAL
1	B	275	GLN
1	B	353	GLU
1	B	373	PHE
1	B	458	ASP
1	B	484	VAL
1	B	486	SER
1	B	508	LYS
1	B	516	ASN

Sometimes sidechains can be flipped to improve hydrogen bonding and reduce clashes. All (7) such sidechains are listed below:

Mol	Chain	Res	Type
1	A	179	ASN
1	A	245	HIS
1	A	464	HIS
1	B	75	HIS
1	B	268	ASN
1	B	404	GLN
1	B	464	HIS

5.3.3 RNA [i](#)

There are no RNA molecules in this entry.

5.4 Non-standard residues in protein, DNA, RNA chains [i](#)

There are no non-standard protein/DNA/RNA residues in this entry.

5.5 Carbohydrates [i](#)

There are no monosaccharides in this entry.

5.6 Ligand geometry [i](#)

Of 11 ligands modelled in this entry, 6 are monoatomic - leaving 5 for Mogul analysis.

In the following table, the Counts columns list the number of bonds (or angles) for which Mogul statistics could be retrieved, the number of bonds (or angles) that are observed in the model and the number of bonds (or angles) that are defined in the Chemical Component Dictionary. The Link column lists molecule types, if any, to which the group is linked. The Z score for a bond length (or angle) is the number of standard deviations the observed value is removed from the expected value. A bond length (or angle) with $|Z| > 2$ is considered an outlier worth inspection. RMSZ is the root-mean-square of all Z scores of the bond lengths (or angles).

Mol	Type	Chain	Res	Link	Bond lengths			Bond angles		
					Counts	RMSZ	# Z > 2	Counts	RMSZ	# Z > 2
3	PO4	A	704	-	4,4,4	2.44	1 (25%)	6,6,6	0.73	0
3	PO4	A	705	-	4,4,4	2.42	1 (25%)	6,6,6	0.62	0
3	PO4	B	705	-	4,4,4	2.41	1 (25%)	6,6,6	0.78	0
4	MUK	B	701	-	16,16,16	0.27	0	21,21,21	0.52	0
3	PO4	B	706	-	4,4,4	2.49	1 (25%)	6,6,6	0.89	0

In the following table, the Chirals column lists the number of chiral outliers, the number of chiral centers analysed, the number of these observed in the model and the number defined in the Chemical Component Dictionary. Similar counts are reported in the Torsion and Rings columns. '-' means no outliers of that kind were identified.

Mol	Type	Chain	Res	Link	Chirals	Torsions	Rings
4	MUK	B	701	-	-	0/4/4/4	0/2/2/2

All (4) bond length outliers are listed below:

Mol	Chain	Res	Type	Atoms	Z	Observed(Å)	Ideal(Å)
3	B	706	PO4	P-O1	4.15	1.60	1.50
3	A	704	PO4	P-O1	4.04	1.60	1.50
3	A	705	PO4	P-O1	3.96	1.60	1.50
3	B	705	PO4	P-O1	3.84	1.59	1.50

There are no bond angle outliers.

There are no chirality outliers.

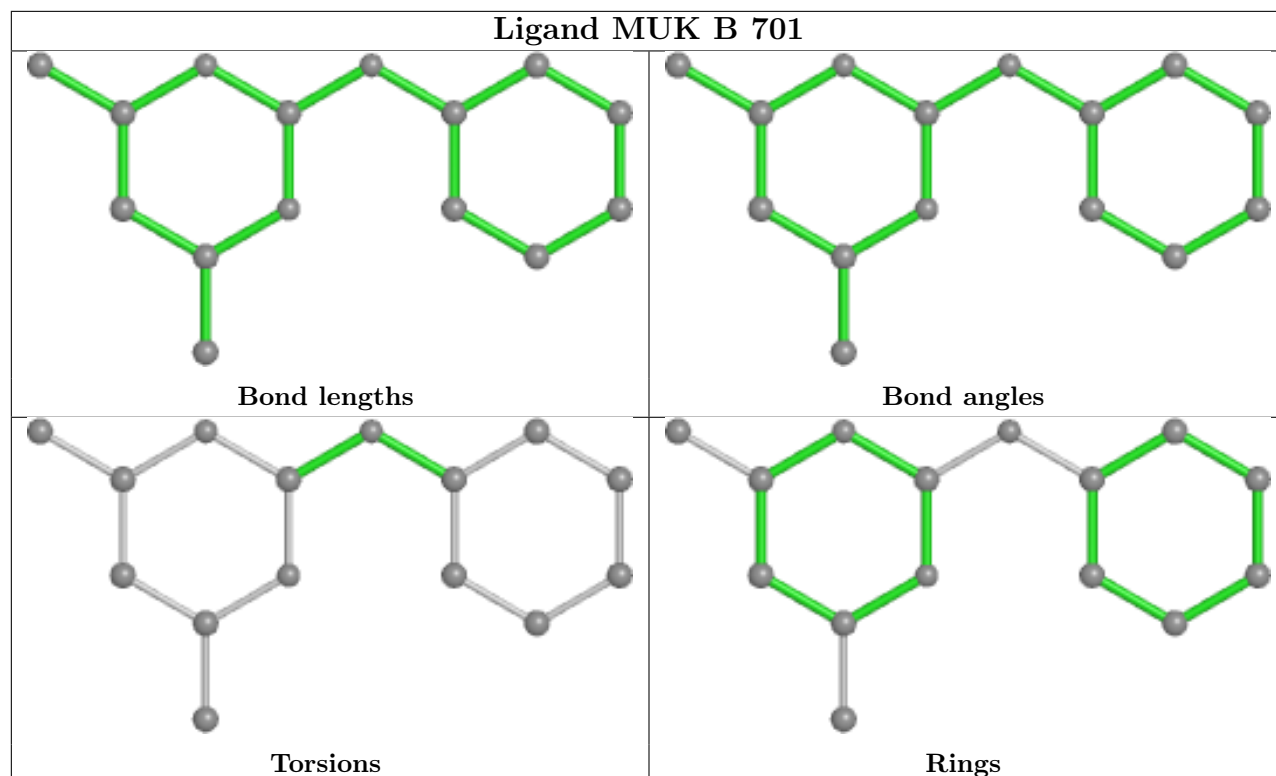
There are no torsion outliers.

There are no ring outliers.

2 monomers are involved in 2 short contacts:

Mol	Chain	Res	Type	Clashes	Symm-Clashes
4	B	701	MUK	1	0
3	B	706	PO4	1	0

The following is a two-dimensional graphical depiction of Mogul quality analysis of bond lengths, bond angles, torsion angles, and ring geometry for all instances of the Ligand of Interest. In addition, ligands with molecular weight > 250 and outliers as shown on the validation Tables will also be included. For torsion angles, if less than 5% of the Mogul distribution of torsion angles is within 10 degrees of the torsion angle in question, then that torsion angle is considered an outlier. Any bond that is central to one or more torsion angles identified as an outlier by Mogul will be highlighted in the graph. For rings, the root-mean-square deviation (RMSD) between the ring in question and similar rings identified by Mogul is calculated over all ring torsion angles. If the average RMSD is greater than 60 degrees and the minimal RMSD between the ring in question and any Mogul-identified rings is also greater than 60 degrees, then that ring is considered an outlier. The outliers are highlighted in purple. The color gray indicates Mogul did not find sufficient equivalents in the CSD to analyse the geometry.



5.7 Other polymers [i](#)

There are no such residues in this entry.

5.8 Polymer linkage issues [i](#)

There are no chain breaks in this entry.

6 Fit of model and data

6.1 Protein, DNA and RNA chains

In the following table, the column labelled ‘#RSRZ > 2’ contains the number (and percentage) of RSRZ outliers, followed by percent RSRZ outliers for the chain as percentile scores relative to all X-ray entries and entries of similar resolution. The OWAB column contains the minimum, median, 95th percentile and maximum values of the occupancy-weighted average B-factor per residue. The column labelled ‘Q < 0.9’ lists the number of (and percentage) of residues with an average occupancy less than 0.9.

Mol	Chain	Analysed	<RSRZ>	#RSRZ>2	OWAB(Å ²)	Q<0.9
1	A	572/601 (95%)	0.71	78 (13%) 3 4	39, 80, 154, 179	0
1	B	585/601 (97%)	0.07	11 (1%) 66 71	38, 60, 110, 158	0
All	All	1157/1202 (96%)	0.39	89 (7%) 13 17	38, 69, 142, 179	0

All (89) RSRZ outliers are listed below:

Mol	Chain	Res	Type	RSRZ
1	A	170	GLY	13.1
1	A	169	VAL	10.4
1	A	202	LYS	8.0
1	B	217	TYR	7.9
1	A	167	TRP	7.4
1	A	165	LEU	6.8
1	A	149	TYR	6.6
1	A	176	LEU	6.4
1	A	225	PHE	6.3
1	A	181	VAL	6.2
1	A	207	ASP	6.0
1	A	103	VAL	5.8
1	A	229	SER	5.8
1	A	340	VAL	5.6
1	A	86	ASN	5.3
1	A	156	GLU	5.3
1	A	334	ILE	5.1
1	A	154	VAL	5.1
1	A	208	ALA	5.0
1	A	247	VAL	4.9
1	B	196	GLY	4.9
1	A	182	PHE	4.5
1	B	157	VAL	4.5
1	B	81	PHE	4.5

Continued on next page...

Continued from previous page...

Mol	Chain	Res	Type	RSRZ
1	A	27	CYS	4.4
1	A	217	TYR	4.4
1	A	31	TYR	4.3
1	A	258	ILE	4.3
1	B	340	VAL	4.3
1	A	256	LEU	4.0
1	A	224	TYR	4.0
1	A	168	GLU	3.9
1	A	230	HIS	3.9
1	A	173	ARG	3.8
1	A	210	VAL	3.7
1	B	195	ILE	3.6
1	A	352	LEU	3.6
1	B	163	LEU	3.6
1	A	339	ARG	3.5
1	A	85	ALA	3.3
1	A	164	HIS	3.2
1	A	323	LYS	3.2
1	A	88	GLN	3.2
1	A	507	ARG	3.2
1	A	324	TYR	3.1
1	A	200	PHE	3.1
1	A	45	VAL	3.1
1	A	157	VAL	3.1
1	A	195	ILE	3.0
1	A	337	ARG	3.0
1	B	7	LEU	3.0
1	A	343	PHE	2.9
1	A	42	VAL	2.9
1	A	266	VAL	2.8
1	A	179	ASN	2.8
1	A	387	VAL	2.8
1	B	193	VAL	2.7
1	A	216	THR	2.7
1	A	209	VAL	2.7
1	A	228	THR	2.7
1	A	215	THR	2.6
1	A	345	LYS	2.5
1	A	84	CYS	2.5
1	A	249	ILE	2.5
1	A	6	VAL	2.4
1	A	166	SER	2.4

Continued on next page...

Continued from previous page...

Mol	Chain	Res	Type	RSRZ
1	A	257	ASN	2.4
1	A	226	VAL	2.4
1	A	34	VAL	2.3
1	A	201	GLU	2.3
1	A	7	LEU	2.3
1	A	214	THR	2.3
1	A	318	CYS	2.3
1	A	152	ALA	2.2
1	B	46	ASN	2.2
1	A	358	CYS	2.2
1	A	89	VAL	2.2
1	A	43	LEU	2.1
1	A	346	PHE	2.1
1	A	504	PRO	2.1
1	A	8	CYS	2.1
1	A	49	VAL	2.1
1	A	335	PRO	2.1
1	A	178	ARG	2.0
1	A	336	ALA	2.0
1	A	184	GLY	2.0
1	A	171	LYS	2.0
1	B	83	LEU	2.0
1	A	221	VAL	2.0

6.2 Non-standard residues in protein, DNA, RNA chains [i](#)

There are no non-standard protein/DNA/RNA residues in this entry.

6.3 Carbohydrates [i](#)

There are no monosaccharides in this entry.

6.4 Ligands [i](#)

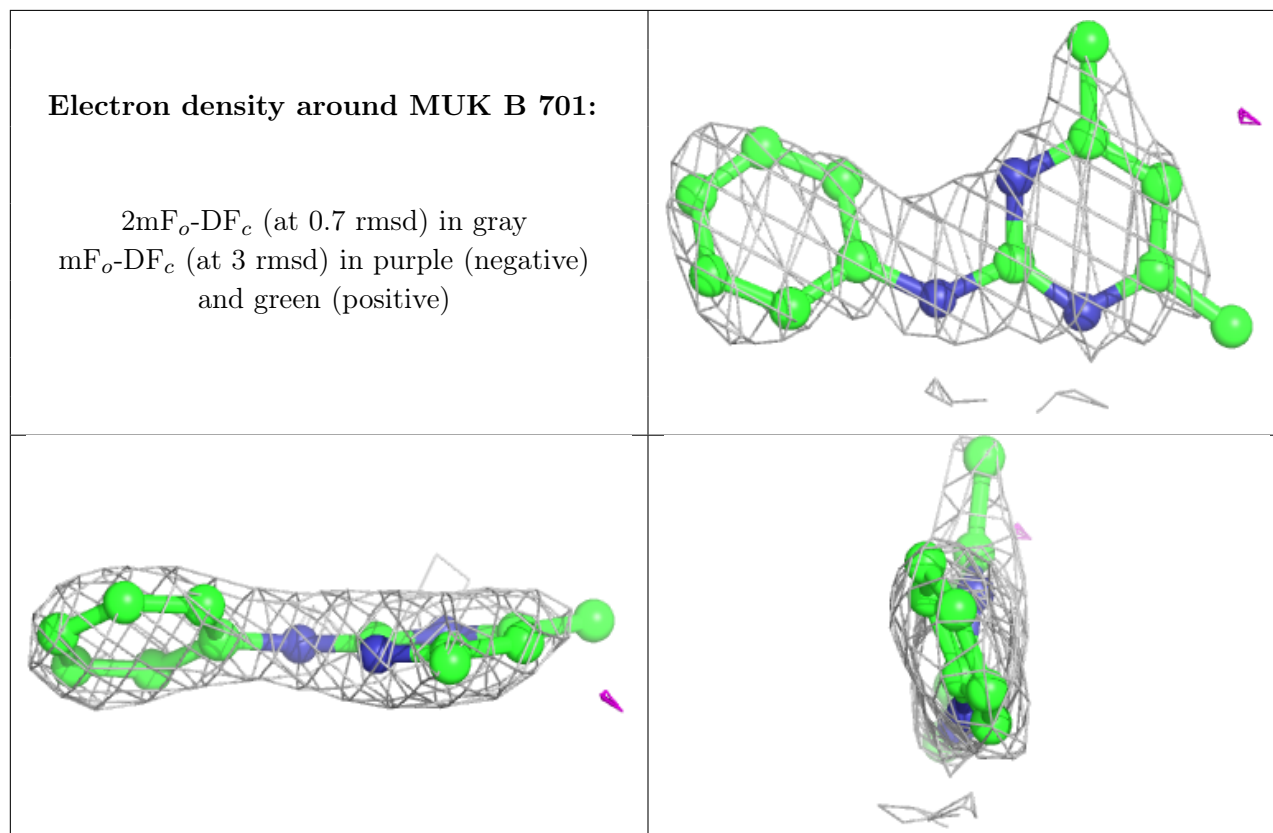
In the following table, the Atoms column lists the number of modelled atoms in the group and the number defined in the chemical component dictionary. The B-factors column lists the minimum, median, 95th percentile and maximum values of B factors of atoms in the group. The column labelled 'Q< 0.9' lists the number of atoms with occupancy less than 0.9.

Continued on next page...

Continued from previous page...

Mol	Type	Chain	Res	Atoms	RSCC	RSR	B-factors(\AA^2)	Q<0.9
4	MUK	B	701	15/15	0.93	0.24	40,41,43,43	15
2	ZN	A	703	1/1	0.97	0.09	126,126,126,126	0
3	PO4	B	705	5/5	0.98	0.13	52,53,57,57	0
2	ZN	B	703	1/1	0.99	0.12	88,88,88,88	0
2	ZN	B	704	1/1	0.99	0.13	103,103,103,103	0
3	PO4	A	704	5/5	0.99	0.14	59,60,64,66	0
3	PO4	A	705	5/5	0.99	0.14	58,59,62,62	0
2	ZN	A	702	1/1	0.99	0.12	74,74,74,74	0
3	PO4	B	706	5/5	0.99	0.12	53,53,56,59	0
2	ZN	A	701	1/1	0.99	0.13	70,70,70,70	0
2	ZN	B	702	1/1	1.00	0.08	46,46,46,46	0

The following is a graphical depiction of the model fit to experimental electron density of all instances of the Ligand of Interest. In addition, ligands with molecular weight > 250 and outliers as shown on the geometry validation Tables will also be included. Each fit is shown from different orientation to approximate a three-dimensional view.



6.5 Other polymers [i](#)

There are no such residues in this entry.