



Full wwPDB EM Validation Report ⓘ

Dec 9, 2024 – 06:22 pm GMT

PDB ID : 8RMD
EMDB ID : EMD-19357
Title : Structure of the FDX2-bound core ISC complex (distal conformation)
Authors : Steinhilper, R.; Murphy, B.J.
Deposited on : 2024-01-05
Resolution : 2.52 Å(reported)
Based on initial models : 2Y5C, 6NZU

This is a Full wwPDB EM Validation Report for a publicly released PDB entry.

We welcome your comments at validation@mail.wwpdb.org

A user guide is available at

<https://www.wwpdb.org/validation/2017/EMValidationReportHelp>

with specific help available everywhere you see the ⓘ symbol.

The types of validation reports are described at

<http://www.wwpdb.org/validation/2017/FAQs#types>.

The following versions of software and data (see [references ⓘ](#)) were used in the production of this report:

EMDB validation analysis : 0.0.1.dev113
Mogul : 1.8.4, CSD as541be (2020)
MolProbity : 4.02b-467
buster-report : 1.1.7 (2018)
Percentile statistics : 20231227.v01 (using entries in the PDB archive December 27th 2023)
MapQ : 1.9.13
Ideal geometry (proteins) : Engh & Huber (2001)
Ideal geometry (DNA, RNA) : Parkinson et al. (1996)
Validation Pipeline (wwPDB-VP) : 2.40

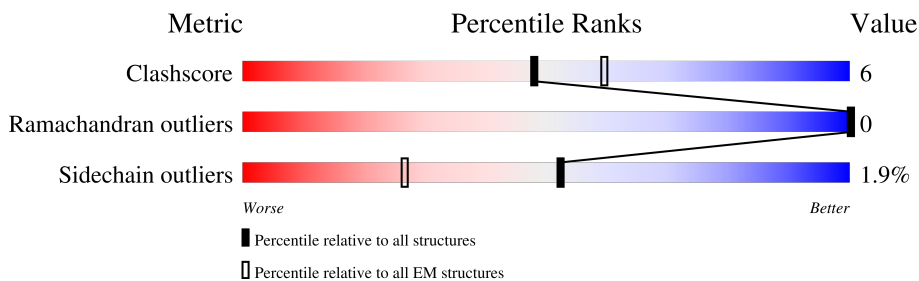
1 Overall quality at a glance

The following experimental techniques were used to determine the structure:

ELECTRON MICROSCOPY

The reported resolution of this entry is 2.52 Å.

Percentile scores (ranging between 0-100) for global validation metrics of the entry are shown in the following graphic. The table shows the number of entries on which the scores are based.




Metric	Whole archive (#Entries)	EM structures (#Entries)
Clashscore	210492	15764
Ramachandran outliers	207382	16835
Sidechain outliers	206894	16415

The table below summarises the geometric issues observed across the polymeric chains and their fit to the map. The red, orange, yellow and green segments of the bar indicate the fraction of residues that contain outliers for ≥ 3 , 2, 1 and 0 types of geometric quality criteria respectively. A grey segment represents the fraction of residues that are not modelled. The numeric value for each fraction is indicated below the corresponding segment, with a dot representing fractions $\leq 5\%$. The upper red bar (where present) indicates the fraction of residues that have poor fit to the EM map (all-atom inclusion $< 40\%$). The numeric value is given above the bar.

Mol	Chain	Length	Quality of chain
1	A	404	
1	E	404	
2	B	115	
2	F	115	
3	C	78	
3	G	78	
4	D	143	
4	H	143	

Continued on next page...

Continued from previous page...

Mol	Chain	Length	Quality of chain
5	I	121	 <p>A horizontal bar chart representing the quality of chain. The bar is divided into three segments: a green segment on the left labeled '73%', a yellow segment in the middle labeled '12%', and a grey segment on the right labeled '15%'. There are small red and black dots above the bar.</p>

2 Entry composition

There are 9 unique types of molecules in this entry. The entry contains 11857 atoms, of which 0 are hydrogens and 0 are deuteriums.

In the tables below, the AltConf column contains the number of residues with at least one atom in alternate conformation and the Trace column contains the number of residues modelled with at most 2 atoms.

- Molecule 1 is a protein called Isoform Mitochondrial of Cysteine desulfurase.

Mol	Chain	Residues	Atoms					AltConf	Trace	
			Total	C	N	O	P			S
1	A	400	Total	C	N	O	P	S	2	0
			3140	1967	554	597	1	21		
1	E	400	Total	C	N	O	P	S	2	0
			3140	1967	554	597	1	21		

There are 4 discrepancies between the modelled and reference sequences:

Chain	Residue	Modelled	Actual	Comment	Reference
A	54	MET	-	initiating methionine	UNP Q9Y697
A	55	SER	-	expression tag	UNP Q9Y697
E	54	MET	-	initiating methionine	UNP Q9Y697
E	55	SER	-	expression tag	UNP Q9Y697

- Molecule 2 is a protein called LYR motif-containing protein 4.

Mol	Chain	Residues	Atoms					AltConf	Trace
			Total	C	N	O	S		
2	B	81	Total	C	N	O	S	1	0
			689	431	138	119	1		
2	F	81	Total	C	N	O	S	1	0
			689	431	138	119	1		

There are 50 discrepancies between the modelled and reference sequences:

Chain	Residue	Modelled	Actual	Comment	Reference
B	-23	MET	-	initiating methionine	UNP Q9HD34
B	-22	GLY	-	expression tag	UNP Q9HD34
B	-21	SER	-	expression tag	UNP Q9HD34
B	-20	SER	-	expression tag	UNP Q9HD34
B	-19	HIS	-	expression tag	UNP Q9HD34
B	-18	HIS	-	expression tag	UNP Q9HD34
B	-17	HIS	-	expression tag	UNP Q9HD34
B	-16	HIS	-	expression tag	UNP Q9HD34
B	-15	HIS	-	expression tag	UNP Q9HD34

Continued on next page...

Continued from previous page...

Chain	Residue	Modelled	Actual	Comment	Reference
B	-14	HIS	-	expression tag	UNP Q9HD34
B	-13	GLY	-	expression tag	UNP Q9HD34
B	-12	SER	-	expression tag	UNP Q9HD34
B	-11	PRO	-	expression tag	UNP Q9HD34
B	-10	THR	-	expression tag	UNP Q9HD34
B	-9	THR	-	expression tag	UNP Q9HD34
B	-8	GLU	-	expression tag	UNP Q9HD34
B	-7	ASN	-	expression tag	UNP Q9HD34
B	-6	LEU	-	expression tag	UNP Q9HD34
B	-5	TYR	-	expression tag	UNP Q9HD34
B	-4	PHE	-	expression tag	UNP Q9HD34
B	-3	GLN	-	expression tag	UNP Q9HD34
B	-2	GLY	-	expression tag	UNP Q9HD34
B	-1	HIS	-	expression tag	UNP Q9HD34
B	0	ASN	-	expression tag	UNP Q9HD34
B	11	ALA	SER	variant	UNP Q9HD34
F	-23	MET	-	initiating methionine	UNP Q9HD34
F	-22	GLY	-	expression tag	UNP Q9HD34
F	-21	SER	-	expression tag	UNP Q9HD34
F	-20	SER	-	expression tag	UNP Q9HD34
F	-19	HIS	-	expression tag	UNP Q9HD34
F	-18	HIS	-	expression tag	UNP Q9HD34
F	-17	HIS	-	expression tag	UNP Q9HD34
F	-16	HIS	-	expression tag	UNP Q9HD34
F	-15	HIS	-	expression tag	UNP Q9HD34
F	-14	HIS	-	expression tag	UNP Q9HD34
F	-13	GLY	-	expression tag	UNP Q9HD34
F	-12	SER	-	expression tag	UNP Q9HD34
F	-11	PRO	-	expression tag	UNP Q9HD34
F	-10	THR	-	expression tag	UNP Q9HD34
F	-9	THR	-	expression tag	UNP Q9HD34
F	-8	GLU	-	expression tag	UNP Q9HD34
F	-7	ASN	-	expression tag	UNP Q9HD34
F	-6	LEU	-	expression tag	UNP Q9HD34
F	-5	TYR	-	expression tag	UNP Q9HD34
F	-4	PHE	-	expression tag	UNP Q9HD34
F	-3	GLN	-	expression tag	UNP Q9HD34
F	-2	GLY	-	expression tag	UNP Q9HD34
F	-1	HIS	-	expression tag	UNP Q9HD34
F	0	ASN	-	expression tag	UNP Q9HD34
F	11	ALA	SER	variant	UNP Q9HD34

- Molecule 3 is a protein called Acyl carrier protein.

Mol	Chain	Residues	Atoms					AltConf	Trace
3	C	74	Total	C	N	O	S	0	0
			576	357	89	129	1		
3	G	74	Total	C	N	O	S	0	0
			576	357	89	129	1		

- Molecule 4 is a protein called Isoform 1 of Iron-sulfur cluster assembly enzyme ISCU.

Mol	Chain	Residues	Atoms					AltConf	Trace
4	D	124	Total	C	N	O	S	1	0
			948	599	161	182	6		
4	H	124	Total	C	N	O	S	1	0
			948	599	161	182	6		

There are 20 discrepancies between the modelled and reference sequences:

Chain	Residue	Modelled	Actual	Comment	Reference
D	33	MET	-	initiating methionine	UNP Q9H1K1
D	34	ALA	-	expression tag	UNP Q9H1K1
D	168	LEU	-	expression tag	UNP Q9H1K1
D	169	GLU	-	expression tag	UNP Q9H1K1
D	170	HIS	-	expression tag	UNP Q9H1K1
D	171	HIS	-	expression tag	UNP Q9H1K1
D	172	HIS	-	expression tag	UNP Q9H1K1
D	173	HIS	-	expression tag	UNP Q9H1K1
D	174	HIS	-	expression tag	UNP Q9H1K1
D	175	HIS	-	expression tag	UNP Q9H1K1
H	33	MET	-	initiating methionine	UNP Q9H1K1
H	34	ALA	-	expression tag	UNP Q9H1K1
H	168	LEU	-	expression tag	UNP Q9H1K1
H	169	GLU	-	expression tag	UNP Q9H1K1
H	170	HIS	-	expression tag	UNP Q9H1K1
H	171	HIS	-	expression tag	UNP Q9H1K1
H	172	HIS	-	expression tag	UNP Q9H1K1
H	173	HIS	-	expression tag	UNP Q9H1K1
H	174	HIS	-	expression tag	UNP Q9H1K1
H	175	HIS	-	expression tag	UNP Q9H1K1

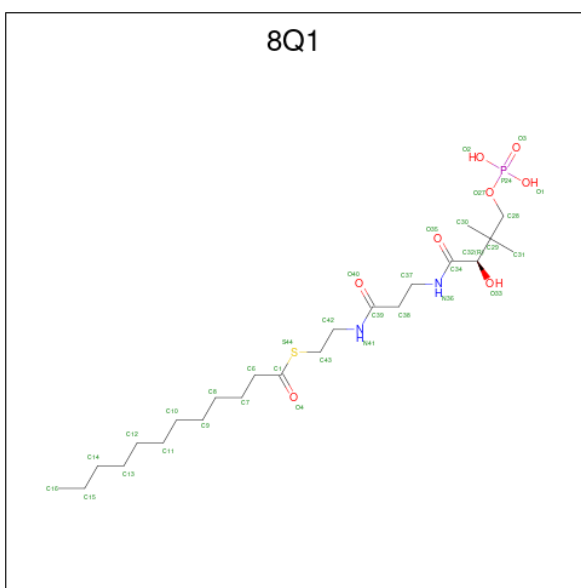
- Molecule 5 is a protein called Ferredoxin-2, mitochondrial.

Mol	Chain	Residues	Atoms					AltConf	Trace
5	I	103	Total	C	N	O	S	0	0
			787	486	137	158	6		

There are 3 discrepancies between the modelled and reference sequences:

Chain	Residue	Modelled	Actual	Comment	Reference
I	66	MET	-	initiating methionine	UNP Q6P4F2
I	67	ALA	-	expression tag	UNP Q6P4F2
I	68	SER	-	expression tag	UNP Q6P4F2

- Molecule 6 is S-[2-({N-[(2R)-2-hydroxy-3,3-dimethyl-4-(phosphonoxy)butanoyl]-beta-alanyl]amino)ethyl] dodecanethioate (three-letter code: 8Q1) (formula: C₂₃H₄₅N₂O₈PS) (labeled as "Ligand of Interest" by depositor).



Mol	Chain	Residues	Atoms					AltConf	
			Total	C	N	O	P		S
6	C	1	Total	C	N	O	P	S	0
			34	23	2	7	1	1	
6	G	1	Total	C	N	O	P	S	0
			34	23	2	7	1	1	

- Molecule 7 is FE (II) ION (three-letter code: FE2) (formula: Fe) (labeled as "Ligand of Interest" by depositor).

Mol	Chain	Residues	Atoms		AltConf
7	D	1	Total	Fe	0
			1	1	
7	H	1	Total	Fe	0
			1	1	

- Molecule 8 is FE2/S2 (INORGANIC) CLUSTER (three-letter code: FES) (formula: Fe₂S₂) (labeled as "Ligand of Interest" by depositor).



Mol	Chain	Residues	Atoms			AltConf
			Total	Fe	S	
8	I	1	4	2	2	0

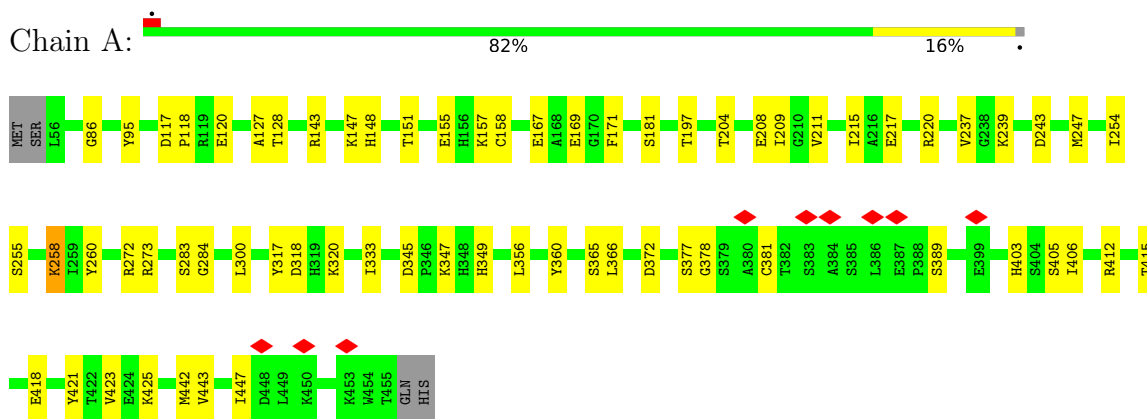
- Molecule 9 is water.

Mol	Chain	Residues	Atoms		AltConf
			Total	O	
9	A	124	124	124	0
9	B	24	24	24	0
9	D	1	1	1	0
9	I	4	4	4	0
9	E	119	119	119	0
9	F	17	17	17	0
9	H	1	1	1	0

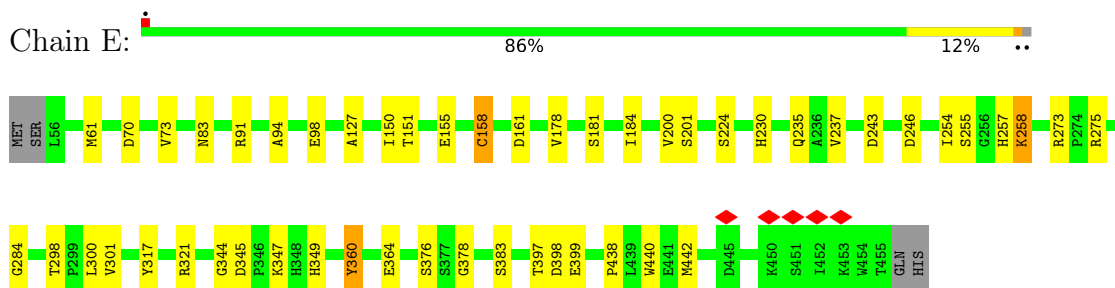
3 Residue-property plots [i](#)

These plots are drawn for all protein, RNA, DNA and oligosaccharide chains in the entry. The first graphic for a chain summarises the proportions of the various outlier classes displayed in the second graphic. The second graphic shows the sequence view annotated by issues in geometry and atom inclusion in map density. Residues are color-coded according to the number of geometric quality criteria for which they contain at least one outlier: green = 0, yellow = 1, orange = 2 and red = 3 or more. A red diamond above a residue indicates a poor fit to the EM map for this residue (all-atom inclusion < 40%). Stretches of 2 or more consecutive residues without any outlier are shown as a green connector. Residues present in the sample, but not in the model, are shown in grey.

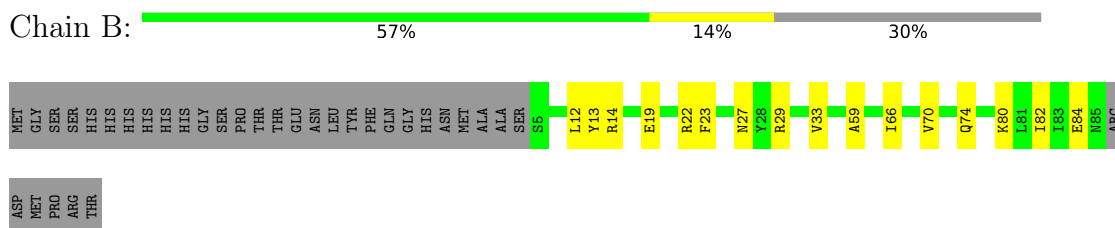
- Molecule 1: Isoform Mitochondrial of Cysteine desulfurase



- Molecule 1: Isoform Mitochondrial of Cysteine desulfurase

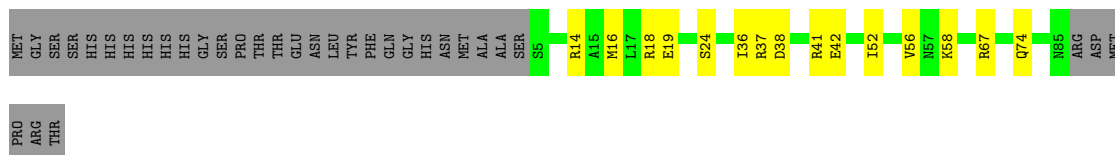


- Molecule 2: LYR motif-containing protein 4

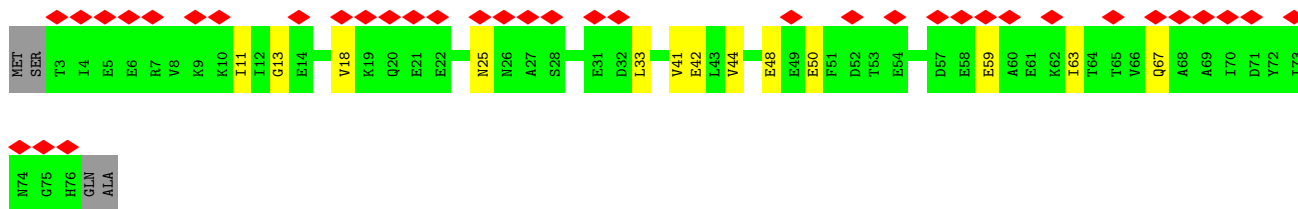
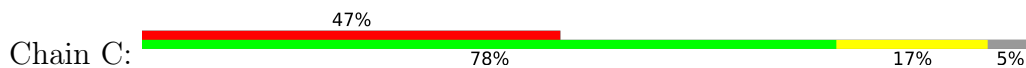


- Molecule 2: LYR motif-containing protein 4

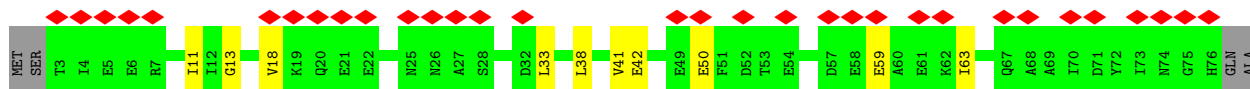
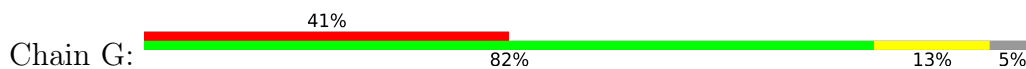




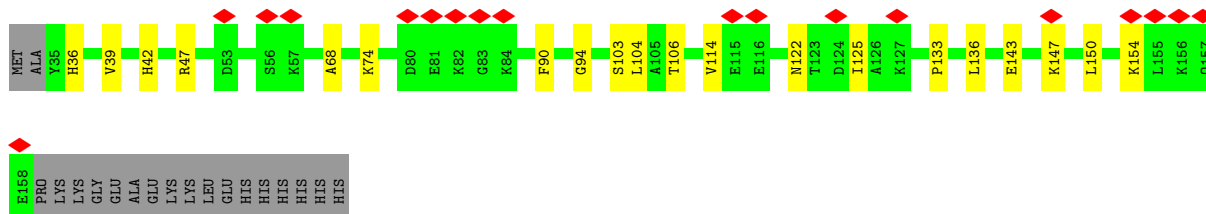
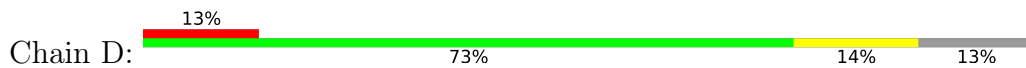
• Molecule 3: Acyl carrier protein



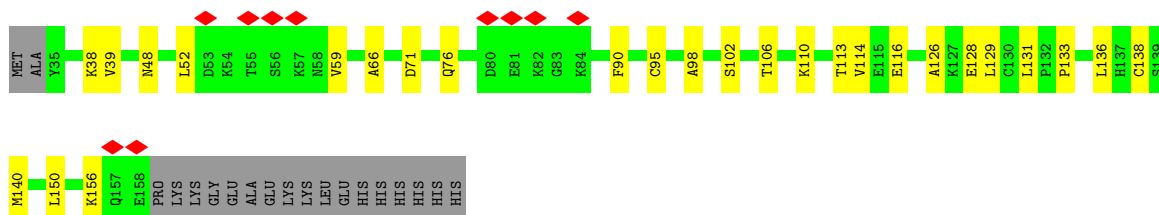
• Molecule 3: Acyl carrier protein



• Molecule 4: Isoform 1 of Iron-sulfur cluster assembly enzyme ISCU



• Molecule 4: Isoform 1 of Iron-sulfur cluster assembly enzyme ISCU



• Molecule 5: Ferredoxin-2, mitochondrial





4 Experimental information

Property	Value	Source
EM reconstruction method	SINGLE PARTICLE	Depositor
Imposed symmetry	POINT, C1	Depositor
Number of particles used	88788	Depositor
Resolution determination method	FSC 0.143 CUT-OFF	Depositor
CTF correction method	PHASE FLIPPING AND AMPLITUDE CORRECTION	Depositor
Microscope	TFS KRIOS	Depositor
Voltage (kV)	300	Depositor
Electron dose ($e^-/\text{\AA}^2$)	80	Depositor
Minimum defocus (nm)	800	Depositor
Maximum defocus (nm)	2200	Depositor
Magnification	Not provided	
Image detector	FEI FALCON IV (4k x 4k)	Depositor
Maximum map value	5.703	Depositor
Minimum map value	-4.596	Depositor
Average map value	0.000	Depositor
Map value standard deviation	0.379	Depositor
Recommended contour level	0.35	Depositor
Map size (Å)	145.728, 90.252, 115.092	wwPDB
Map dimensions	139, 109, 176	wwPDB
Map angles (°)	90.0, 90.0, 90.0	wwPDB
Pixel spacing (Å)	0.828, 0.828, 0.828	Depositor

5 Model quality [i](#)

5.1 Standard geometry [i](#)

Bond lengths and bond angles in the following residue types are not validated in this section: FE2, 8Q1, FES, LLP

The Z score for a bond length (or angle) is the number of standard deviations the observed value is removed from the expected value. A bond length (or angle) with $|Z| > 5$ is considered an outlier worth inspection. RMSZ is the root-mean-square of all Z scores of the bond lengths (or angles).

Mol	Chain	Bond lengths		Bond angles	
		RMSZ	# Z >5	RMSZ	# Z >5
1	A	0.33	0/3172	0.59	0/4289
1	E	0.31	0/3172	0.56	0/4289
2	B	0.46	0/697	0.77	0/933
2	F	0.36	0/697	0.67	0/933
3	C	0.30	0/580	0.45	0/785
3	G	0.39	0/580	0.54	0/785
4	D	0.32	0/962	0.49	0/1296
4	H	0.28	0/962	0.50	0/1296
5	I	0.43	0/800	0.68	0/1089
All	All	0.34	0/11622	0.58	0/15695

There are no bond length outliers.

There are no bond angle outliers.

There are no chirality outliers.

There are no planarity outliers.

5.2 Too-close contacts [i](#)

In the following table, the Non-H and H(model) columns list the number of non-hydrogen atoms and hydrogen atoms in the chain respectively. The H(added) column lists the number of hydrogen atoms added and optimized by MolProbity. The Clashes column lists the number of clashes within the asymmetric unit, whereas Symm-Clashes lists symmetry-related clashes.

Mol	Chain	Non-H	H(model)	H(added)	Clashes	Symm-Clashes
1	A	3140	0	3148	44	0
1	E	3140	0	3147	28	0
2	B	689	0	721	11	0
2	F	689	0	721	12	0

Continued on next page...

Continued from previous page...

Mol	Chain	Non-H	H(model)	H(added)	Clashes	Symm-Clashes
3	C	576	0	552	8	0
3	G	576	0	552	6	0
4	D	948	0	972	13	0
4	H	948	0	971	14	0
5	I	787	0	760	8	0
6	C	34	0	0	0	0
6	G	34	0	0	0	0
7	D	1	0	0	0	0
7	H	1	0	0	0	0
8	I	4	0	0	0	0
9	A	124	0	0	3	0
9	B	24	0	0	0	0
9	D	1	0	0	0	0
9	E	119	0	0	2	0
9	F	17	0	0	1	0
9	H	1	0	0	0	0
9	I	4	0	0	0	0
All	All	11857	0	11544	132	0

The all-atom clashscore is defined as the number of clashes found per 1000 atoms (including hydrogen atoms). The all-atom clashscore for this structure is 6.

All (132) close contacts within the same asymmetric unit are listed below, sorted by their clash magnitude.

Atom-1	Atom-2	Interatomic distance (Å)	Clash overlap (Å)
1:A:181:SER:HB2	1:A:345:ASP:HB2	1.65	0.78
5:I:108:CYS:HB3	5:I:114:CYS:HB3	1.73	0.70
4:H:66:ALA:HB2	4:H:71:ASP:HB2	1.74	0.70
1:E:181:SER:HB2	1:E:345:ASP:HB2	1.72	0.69
4:D:114:VAL:HG13	4:D:150:LEU:HD22	1.76	0.67
1:E:235:GLN:NE2	1:E:258:LLP:O3	2.24	0.66
1:A:157:LYS:HG3	9:A:644:HOH:O	1.96	0.66
1:E:364:GLU:OE1	4:H:95:CYS:HB2	1.96	0.65
1:A:208:GLU:OE2	1:A:389:SER:OG	2.16	0.64
1:A:120:GLU:HG3	1:A:272:ARG:HD3	1.80	0.63
1:E:378:GLY:HA2	9:E:675:HOH:O	1.98	0.63
1:E:178:VAL:HG12	1:E:184:ILE:HG22	1.80	0.62
1:A:237:VAL:HG21	1:A:254:ILE:HG12	1.80	0.62
1:E:237:VAL:HG21	1:E:254:ILE:HG12	1.83	0.61
2:F:52:ILE:O	2:F:56:VAL:HG23	2.02	0.60
5:I:119:VAL:HG21	5:I:167:PHE:HB3	1.84	0.60

Continued on next page...

Continued from previous page...

Atom-1	Atom-2	Interatomic distance (Å)	Clash overlap (Å)
1:A:317:TYR:HA	1:A:320:LYS:NZ	2.17	0.59
3:G:13:GLY:HA2	3:G:18:VAL:HG22	1.84	0.59
1:A:243:ASP:H	1:A:247:MET:HE3	1.67	0.58
1:A:300:LEU:HD11	1:E:300:LEU:HD11	1.85	0.58
2:B:13:TYR:OH	3:C:42:GLU:OE2	2.14	0.58
3:C:11:ILE:HD11	3:C:50:GLU:HG2	1.84	0.58
3:C:13:GLY:HA2	3:C:18:VAL:HG22	1.86	0.58
2:B:19:GLU:OE1	2:B:22:ARG:NH2	2.30	0.58
1:A:421:TYR:OH	1:A:425:LYS:NZ	2.36	0.58
1:E:360:TYR:HD2	1:E:440:TRP:HE3	1.52	0.57
4:D:90:PHE:HB3	4:D:106:THR:HG21	1.85	0.57
1:E:438:PRO:O	1:E:442:MET:HG3	2.05	0.56
1:A:284:GLY:HA2	1:E:158:CYS:HA	1.88	0.56
5:I:97:ALA:HB1	5:I:102:VAL:HB	1.87	0.55
5:I:112:LEU:HB2	5:I:135:ARG:HH12	1.72	0.55
1:E:344:GLY:O	9:E:601:HOH:O	2.17	0.55
2:F:14[A]:ARG:HG2	2:F:18:ARG:NH1	2.22	0.55
1:A:158:CYS:HA	1:E:284:GLY:HA2	1.89	0.54
3:G:18:VAL:HG11	3:G:33:LEU:HD13	1.90	0.54
1:A:283:SER:HB3	1:E:161:ASP:HB3	1.90	0.54
1:A:415:THR:OG1	1:A:418:GLU:HG3	2.08	0.53
1:E:127:ALA:HB2	1:E:255:SER:HB2	1.90	0.52
4:H:39:VAL:HG22	4:H:129:LEU:HD12	1.92	0.52
1:E:397:THR:HG22	1:E:398:ASP:O	2.10	0.52
2:F:14[B]:ARG:HH21	3:G:41:VAL:HG22	1.75	0.52
1:E:150:ILE:HB	1:E:200:VAL:HG22	1.92	0.51
3:C:44:VAL:O	3:C:48:GLU:HG3	2.10	0.51
4:H:126:ALA:HA	4:H:131:LEU:HD12	1.92	0.51
1:A:127:ALA:HB2	1:A:255:SER:HB2	1.93	0.50
5:I:112:LEU:HB2	5:I:135:ARG:NH1	2.25	0.50
1:E:94:ALA:O	1:E:98:GLU:HG2	2.11	0.50
4:H:52:LEU:H	4:H:76:GLN:HE22	1.58	0.50
1:A:209:ILE:HG13	1:A:211:VAL:HG13	1.94	0.50
4:D:133:PRO:HA	4:D:136:LEU:HG	1.94	0.50
4:H:38:LYS:HD2	4:H:128:GLU:O	2.12	0.50
2:B:70:VAL:O	2:B:74:GLN:HG2	2.12	0.50
1:A:239:LYS:HE2	9:A:709:HOH:O	2.12	0.49
3:G:11:ILE:HD11	3:G:50:GLU:HG2	1.94	0.49
1:E:317:TYR:OH	2:F:38:ASP:OD2	2.25	0.49
4:H:114:VAL:HG13	4:H:150:LEU:HD22	1.95	0.49
1:A:360:TYR:CE2	1:A:443:VAL:HG21	2.47	0.48

Continued on next page...

Continued from previous page...

Atom-1	Atom-2	Interatomic distance (Å)	Clash overlap (Å)
9:A:690:HOH:O	2:B:27:ASN:HB3	2.12	0.48
1:A:143:ARG:HG3	1:A:147:LYS:HE2	1.96	0.48
4:D:42:HIS:CG	4:D:103:SER:HG	2.32	0.47
1:A:360:TYR:CZ	1:A:443:VAL:HG21	2.48	0.47
2:B:19:GLU:HG3	2:B:66:ILE:HG22	1.96	0.47
2:F:19:GLU:HG3	2:F:67:ARG:HG3	1.95	0.47
1:A:366:LEU:HD23	1:A:406:ILE:HG13	1.97	0.47
2:F:14[B]:ARG:HG2	2:F:18:ARG:NH1	2.28	0.47
1:E:298:THR:HA	1:E:301:VAL:HG22	1.97	0.47
2:F:37:ARG:O	2:F:41:ARG:HG2	2.14	0.47
1:A:151:THR:OG1	1:A:155:GLU:HG3	2.15	0.47
1:A:260:TYR:OH	1:A:412:ARG:N	2.33	0.47
1:A:317:TYR:HA	1:A:320:LYS:HZ2	1.79	0.46
1:E:257:HIS:CE1	1:E:258:LLP:HE2	2.50	0.46
4:D:36:HIS:HB3	4:D:39:VAL:HG23	1.96	0.46
3:C:18:VAL:HG11	3:C:33:LEU:HD13	1.97	0.46
1:A:345:ASP:OD2	1:A:347:LYS:HB2	2.16	0.46
1:E:360:TYR:CD2	1:E:440:TRP:HE3	2.34	0.46
1:A:377:SER:OG	1:A:378:GLY:N	2.49	0.45
1:A:239:LYS:NZ	1:A:258:LLP:O	2.48	0.45
3:C:59:GLU:O	3:C:63:ILE:HG13	2.17	0.45
1:E:127:ALA:HB3	1:E:258:LLP:OP4	2.17	0.45
2:F:16:MET:HB3	2:F:36:ILE:HD13	1.98	0.45
4:H:59:VAL:O	4:H:156:LYS:NZ	2.37	0.45
1:A:217:GLU:HB3	1:A:220:ARG:HH21	1.82	0.45
1:A:333:ILE:HG13	1:A:423:VAL:HG22	1.99	0.44
2:B:80:LYS:NZ	2:B:84:GLU:HB3	2.31	0.44
1:A:317:TYR:HA	1:A:320:LYS:HZ3	1.82	0.44
1:E:151:THR:OG1	1:E:155:GLU:HG3	2.17	0.44
4:H:52:LEU:H	4:H:76:GLN:NE2	2.16	0.44
1:A:143:ARG:NH1	1:A:169:GLU:OE2	2.51	0.43
2:B:80:LYS:HB3	2:B:80:LYS:HE3	1.73	0.43
4:D:143:GLU:O	4:D:147:LYS:HG3	2.18	0.43
2:F:14[A]:ARG:HG2	2:F:18:ARG:HH11	1.83	0.43
1:A:372:ASP:OD2	2:B:82:ILE:HG12	2.18	0.43
1:A:273:ARG:NH1	1:A:273:ARG:HB3	2.34	0.43
4:D:104:LEU:HD23	4:D:125:ILE:HG23	2.00	0.43
1:E:70:ASP:HB3	1:E:73:VAL:HG23	2.00	0.43
1:E:345:ASP:O	1:E:349:HIS:HB2	2.19	0.43
3:G:38:LEU:O	3:G:42:GLU:HG3	2.19	0.42
4:H:133:PRO:HA	4:H:136:LEU:CD2	2.49	0.42

Continued on next page...

Continued from previous page...

Atom-1	Atom-2	Interatomic distance (Å)	Clash overlap (Å)
1:A:128:THR:HG23	1:A:158:CYS:HB3	2.01	0.42
4:H:98:ALA:HA	4:H:138:CYS:HB3	2.02	0.42
1:A:356:LEU:O	1:A:405:SER:HA	2.19	0.42
1:E:243:ASP:HB3	1:E:246:ASP:HB2	2.01	0.42
3:C:25:ASN:O	3:C:67:GLN:HB2	2.20	0.42
5:I:77:ASP:HA	5:I:169:LEU:HD13	2.02	0.42
4:H:113:THR:HG23	4:H:116:GLU:H	1.84	0.42
1:A:403:HIS:HE1	4:D:68:ALA:O	2.03	0.42
1:A:86:GLY:HA3	1:A:95:TYR:HB3	2.01	0.42
4:H:48:ASN:HD21	4:H:110:LYS:NZ	2.17	0.42
1:A:345:ASP:O	1:A:349:HIS:HB2	2.19	0.41
1:A:365:SER:HB3	4:D:94:GLY:O	2.21	0.41
1:A:442:MET:HG2	1:A:447:ILE:HD12	2.03	0.41
4:D:42:HIS:HA	4:D:47:ARG:NH1	2.35	0.41
4:D:74:LYS:O	4:D:90:PHE:HA	2.19	0.41
4:D:154:LYS:HE3	4:D:154:LYS:HB2	1.76	0.41
2:B:12:LEU:HD21	2:B:59:ALA:CB	2.50	0.41
1:A:418:GLU:HG3	1:A:418:GLU:H	1.68	0.41
2:F:14[B]:ARG:HG2	2:F:18:ARG:HH11	1.85	0.41
2:F:74:GLN:HE21	2:F:74:GLN:HB2	1.72	0.41
4:H:90:PHE:HB3	4:H:106:THR:HG21	2.03	0.41
2:B:14[B]:ARG:HH21	3:C:41:VAL:HG22	1.85	0.41
1:E:201:SER:HA	1:E:230:HIS:O	2.21	0.41
1:A:204:THR:HG23	1:A:215:ILE:HG13	2.02	0.41
2:B:29:ARG:O	2:B:33:VAL:HG23	2.21	0.41
2:F:38:ASP:HA	9:F:101:HOH:O	2.21	0.41
3:G:59:GLU:O	3:G:63:ILE:HG13	2.20	0.41
5:I:120:TYR:HB3	5:I:149:ASN:ND2	2.36	0.40
1:A:117:ASP:OD1	1:A:118:PRO:HD2	2.21	0.40
1:A:147:LYS:HD3	1:A:171:PHE:CD2	2.56	0.40
4:D:122:ASN:N	4:D:143:GLU:OE1	2.52	0.40
5:I:123:GLU:H	5:I:123:GLU:HG2	1.74	0.40
1:A:148:HIS:HB3	1:A:197:THR:HA	2.04	0.40
1:E:345:ASP:OD2	1:E:347:LYS:HB2	2.21	0.40

There are no symmetry-related clashes.

5.3 Torsion angles [i](#)

5.3.1 Protein backbone [i](#)

In the following table, the Percentiles column shows the percent Ramachandran outliers of the chain as a percentile score with respect to all PDB entries followed by that with respect to all EM entries.

The Analysed column shows the number of residues for which the backbone conformation was analysed, and the total number of residues.

Mol	Chain	Analysed	Favoured	Allowed	Outliers	Percentiles	
1	A	399/404 (99%)	394 (99%)	5 (1%)	0	100	100
1	E	399/404 (99%)	396 (99%)	3 (1%)	0	100	100
2	B	80/115 (70%)	80 (100%)	0	0	100	100
2	F	80/115 (70%)	80 (100%)	0	0	100	100
3	C	72/78 (92%)	67 (93%)	5 (7%)	0	100	100
3	G	72/78 (92%)	68 (94%)	4 (6%)	0	100	100
4	D	122/143 (85%)	120 (98%)	2 (2%)	0	100	100
4	H	122/143 (85%)	119 (98%)	3 (2%)	0	100	100
5	I	101/121 (84%)	99 (98%)	2 (2%)	0	100	100
All	All	1447/1601 (90%)	1423 (98%)	24 (2%)	0	100	100

There are no Ramachandran outliers to report.

5.3.2 Protein sidechains [i](#)

In the following table, the Percentiles column shows the percent sidechain outliers of the chain as a percentile score with respect to all PDB entries followed by that with respect to all EM entries.

The Analysed column shows the number of residues for which the sidechain conformation was analysed, and the total number of residues.

Mol	Chain	Analysed	Rotameric	Outliers	Percentiles	
1	A	342/344 (99%)	339 (99%)	3 (1%)	75	89
1	E	342/344 (99%)	329 (96%)	13 (4%)	28	51
2	B	73/101 (72%)	72 (99%)	1 (1%)	62	82
2	F	73/101 (72%)	70 (96%)	3 (4%)	26	47
3	C	64/67 (96%)	64 (100%)	0	100	100

Continued on next page...

Continued from previous page...

Mol	Chain	Analysed	Rotameric	Outliers	Percentiles	
3	G	64/67 (96%)	64 (100%)	0	100	100
4	D	103/118 (87%)	103 (100%)	0	100	100
4	H	103/118 (87%)	101 (98%)	2 (2%)	52	75
5	I	90/106 (85%)	87 (97%)	3 (3%)	33	57
All	All	1254/1366 (92%)	1229 (98%)	25 (2%)	52	74

All (25) residues with a non-rotameric sidechain are listed below:

Mol	Chain	Res	Type
1	A	167	GLU
1	A	318	ASP
1	A	381	CYS
2	B	23	PHE
5	I	79	SER
5	I	108	CYS
5	I	148	GLU
1	E	61	MET
1	E	83[A]	ASN
1	E	83[B]	ASN
1	E	91	ARG
1	E	158	CYS
1	E	224	SER
1	E	273	ARG
1	E	275	ARG
1	E	321	ARG
1	E	360	TYR
1	E	376	SER
1	E	383	SER
1	E	399	GLU
2	F	24	SER
2	F	42	GLU
2	F	58	LYS
4	H	102	SER
4	H	140	MET

Sometimes sidechains can be flipped to improve hydrogen bonding and reduce clashes. All (17) such sidechains are listed below:

Mol	Chain	Res	Type
1	A	207	ASN
1	A	313	GLN

Continued on next page...

Continued from previous page...

Mol	Chain	Res	Type
1	A	349	HIS
1	A	403	HIS
2	B	71	HIS
3	C	74	ASN
4	D	48	ASN
4	D	122	ASN
5	I	155	GLN
1	E	313	GLN
1	E	331	GLN
1	E	348	HIS
1	E	349	HIS
3	G	74	ASN
4	H	45	ASN
4	H	48	ASN
4	H	76	GLN

5.3.3 RNA [i](#)

There are no RNA molecules in this entry.

5.4 Non-standard residues in protein, DNA, RNA chains [i](#)

2 non-standard protein/DNA/RNA residues are modelled in this entry.

In the following table, the Counts columns list the number of bonds (or angles) for which Mogul statistics could be retrieved, the number of bonds (or angles) that are observed in the model and the number of bonds (or angles) that are defined in the Chemical Component Dictionary. The Link column lists molecule types, if any, to which the group is linked. The Z score for a bond length (or angle) is the number of standard deviations the observed value is removed from the expected value. A bond length (or angle) with $|Z| > 2$ is considered an outlier worth inspection. RMSZ is the root-mean-square of all Z scores of the bond lengths (or angles).

Mol	Type	Chain	Res	Link	Bond lengths			Bond angles		
					Counts	RMSZ	# Z > 2	Counts	RMSZ	# Z > 2
1	LLP	A	258	1	23,24,25	1.15	1 (4%)	25,32,34	1.17	2 (8%)
1	LLP	E	258	1	23,24,25	1.14	1 (4%)	25,32,34	1.37	1 (4%)

In the following table, the Chirals column lists the number of chiral outliers, the number of chiral centers analysed, the number of these observed in the model and the number defined in the Chemical Component Dictionary. Similar counts are reported in the Torsion and Rings columns. '-' means no outliers of that kind were identified.

Mol	Type	Chain	Res	Link	Chirals	Torsions	Rings
1	LLP	A	258	1	-	3/16/17/19	0/1/1/1
1	LLP	E	258	1	-	3/16/17/19	0/1/1/1

All (2) bond length outliers are listed below:

Mol	Chain	Res	Type	Atoms	Z	Observed(Å)	Ideal(Å)
1	A	258	LLP	C4'-NZ	4.81	1.43	1.27
1	E	258	LLP	C4'-NZ	4.79	1.43	1.27

All (3) bond angle outliers are listed below:

Mol	Chain	Res	Type	Atoms	Z	Observed(°)	Ideal(°)
1	E	258	LLP	CE-NZ-C4'	5.87	136.93	118.90
1	A	258	LLP	C4-C4'-NZ	-3.79	106.91	124.31
1	A	258	LLP	CE-NZ-C4'	3.40	129.34	118.90

There are no chirality outliers.

All (6) torsion outliers are listed below:

Mol	Chain	Res	Type	Atoms
1	A	258	LLP	C3-C4-C4'-NZ
1	E	258	LLP	C3-C4-C4'-NZ
1	E	258	LLP	C5-C4-C4'-NZ
1	E	258	LLP	CD-CE-NZ-C4'
1	A	258	LLP	CD-CE-NZ-C4'
1	A	258	LLP	C5-C4-C4'-NZ

There are no ring outliers.

2 monomers are involved in 4 short contacts:

Mol	Chain	Res	Type	Clashes	Symm-Clashes
1	A	258	LLP	1	0
1	E	258	LLP	3	0

5.5 Carbohydrates [i](#)

There are no oligosaccharides in this entry.

5.6 Ligand geometry

Of 5 ligands modelled in this entry, 2 are monoatomic - leaving 3 for Mogul analysis.

In the following table, the Counts columns list the number of bonds (or angles) for which Mogul statistics could be retrieved, the number of bonds (or angles) that are observed in the model and the number of bonds (or angles) that are defined in the Chemical Component Dictionary. The Link column lists molecule types, if any, to which the group is linked. The Z score for a bond length (or angle) is the number of standard deviations the observed value is removed from the expected value. A bond length (or angle) with $|Z| > 2$ is considered an outlier worth inspection. RMSZ is the root-mean-square of all Z scores of the bond lengths (or angles).

Mol	Type	Chain	Res	Link	Bond lengths			Bond angles		
					Counts	RMSZ	# Z > 2	Counts	RMSZ	# Z > 2
6	8Q1	G	101	3	27,33,34	0.31	0	32,40,43	0.47	0
6	8Q1	C	101	3	27,33,34	0.29	0	32,40,43	0.71	1 (3%)
8	FES	I	201	5	0,4,4	-	-	-		

In the following table, the Chirals column lists the number of chiral outliers, the number of chiral centers analysed, the number of these observed in the model and the number defined in the Chemical Component Dictionary. Similar counts are reported in the Torsion and Rings columns. '-' means no outliers of that kind were identified.

Mol	Type	Chain	Res	Link	Chirals	Torsions	Rings
6	8Q1	G	101	3	-	6/38/40/41	-
6	8Q1	C	101	3	-	13/38/40/41	-
8	FES	I	201	5	-	-	0/1/1/1

There are no bond length outliers.

All (1) bond angle outliers are listed below:

Mol	Chain	Res	Type	Atoms	Z	Observed($^{\circ}$)	Ideal($^{\circ}$)
6	C	101	8Q1	C37-C38-C39	2.14	115.92	112.36

There are no chirality outliers.

All (19) torsion outliers are listed below:

Mol	Chain	Res	Type	Atoms
6	C	101	8Q1	O27-C28-C29-C31
6	C	101	8Q1	O27-C28-C29-C32
6	C	101	8Q1	N36-C37-C38-C39
6	G	101	8Q1	O27-C28-C29-C30
6	G	101	8Q1	O27-C28-C29-C31

Continued on next page...

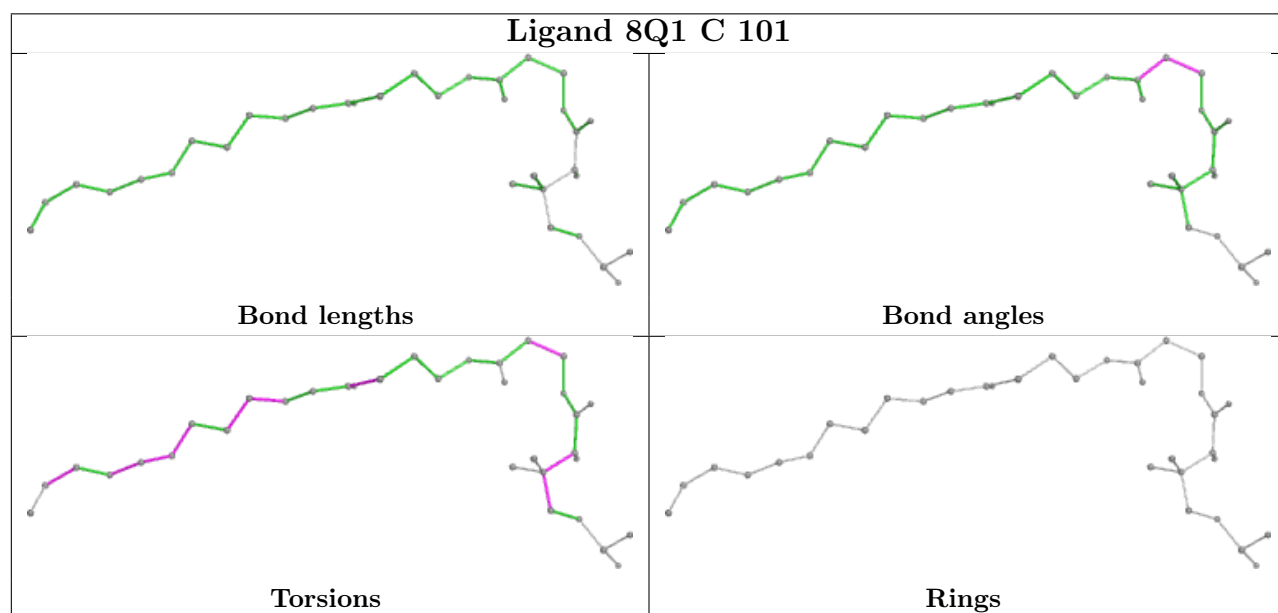
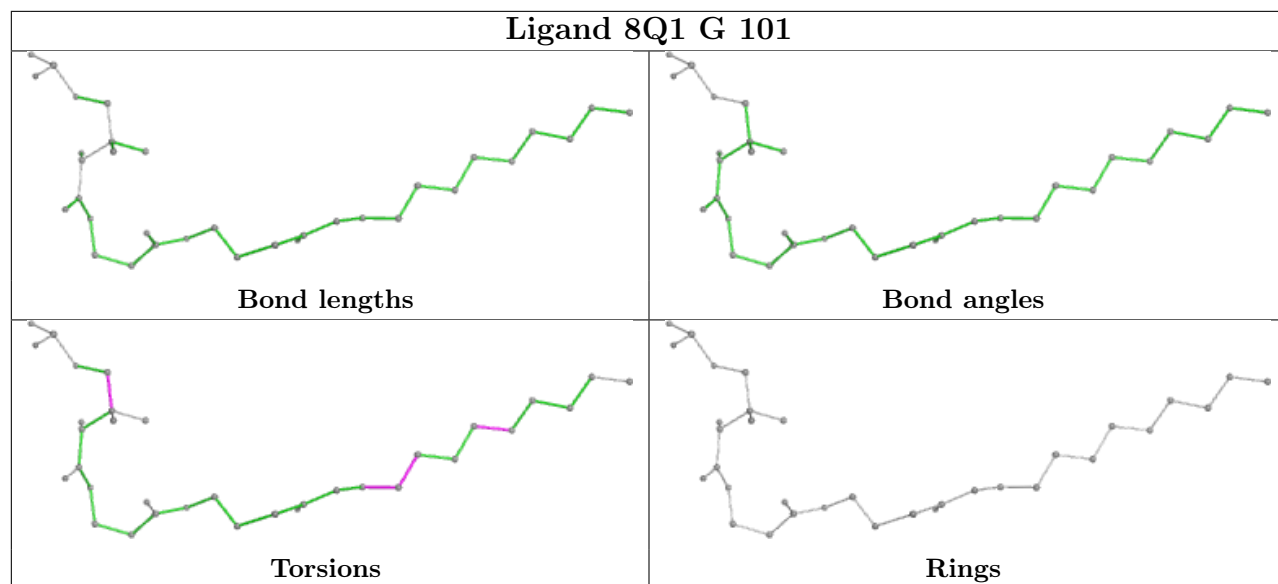
Continued from previous page...

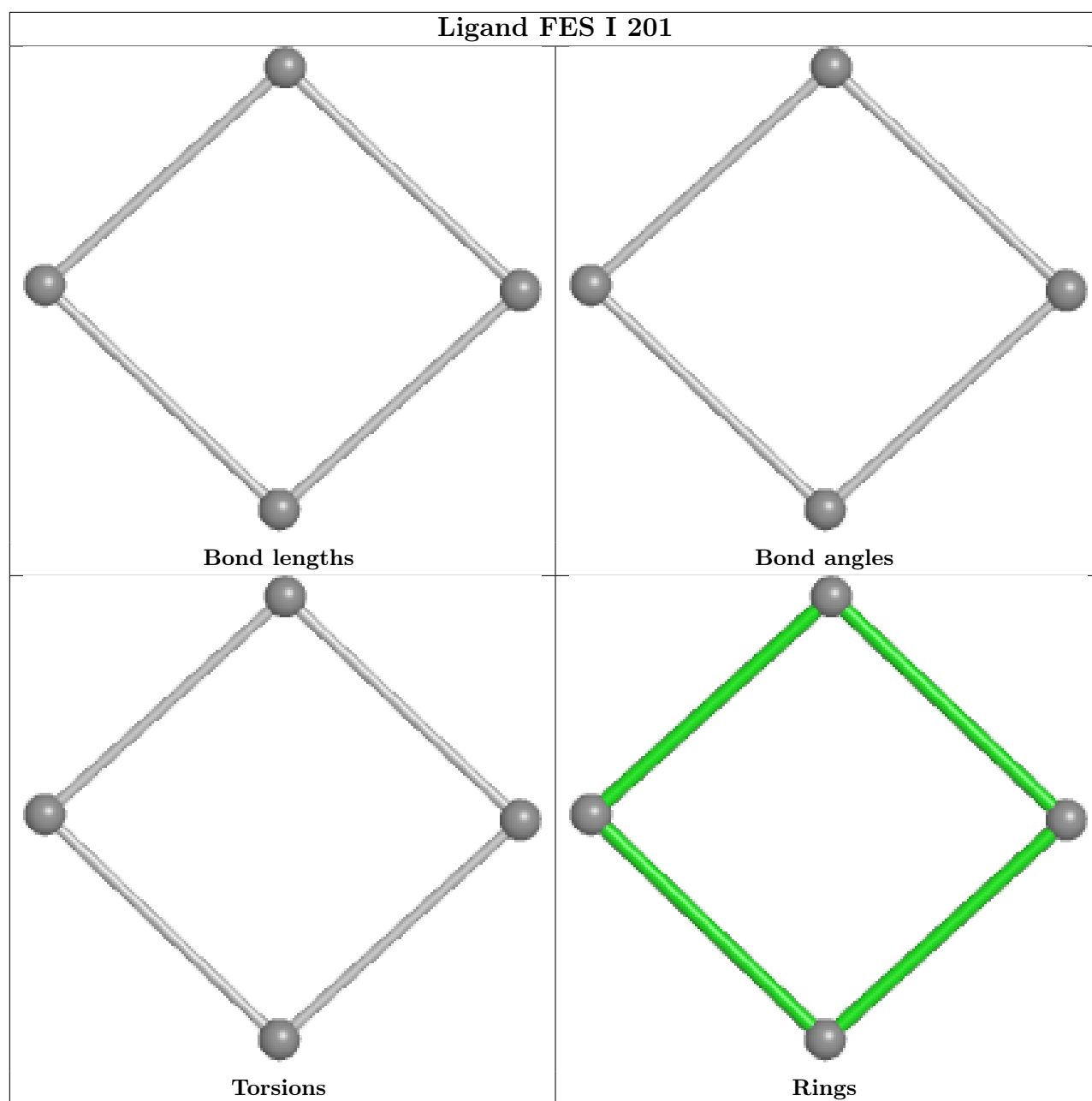
Mol	Chain	Res	Type	Atoms
6	G	101	8Q1	O27-C28-C29-C32
6	C	101	8Q1	C9-C10-C11-C12
6	G	101	8Q1	C6-C7-C8-C9
6	C	101	8Q1	O27-C28-C29-C30
6	C	101	8Q1	C6-C7-C8-C9
6	C	101	8Q1	C7-C8-C9-C10
6	C	101	8Q1	C13-C14-C15-C16
6	C	101	8Q1	C10-C11-C12-C13
6	G	101	8Q1	C7-C8-C9-C10
6	C	101	8Q1	C6-C1-S44-C43
6	G	101	8Q1	C10-C11-C12-C13
6	C	101	8Q1	O4-C1-S44-C43
6	C	101	8Q1	C11-C12-C13-C14
6	C	101	8Q1	C28-C29-C32-C34

There are no ring outliers.

No monomer is involved in short contacts.

The following is a two-dimensional graphical depiction of Mogul quality analysis of bond lengths, bond angles, torsion angles, and ring geometry for all instances of the Ligand of Interest. In addition, ligands with molecular weight > 250 and outliers as shown on the validation Tables will also be included. For torsion angles, if less than 5% of the Mogul distribution of torsion angles is within 10 degrees of the torsion angle in question, then that torsion angle is considered an outlier. Any bond that is central to one or more torsion angles identified as an outlier by Mogul will be highlighted in the graph. For rings, the root-mean-square deviation (RMSD) between the ring in question and similar rings identified by Mogul is calculated over all ring torsion angles. If the average RMSD is greater than 60 degrees and the minimal RMSD between the ring in question and any Mogul-identified rings is also greater than 60 degrees, then that ring is considered an outlier. The outliers are highlighted in purple. The color gray indicates Mogul did not find sufficient equivalents in the CSD to analyse the geometry.





5.7 Other polymers [i](#)

There are no such residues in this entry.

5.8 Polymer linkage issues [i](#)

There are no chain breaks in this entry.

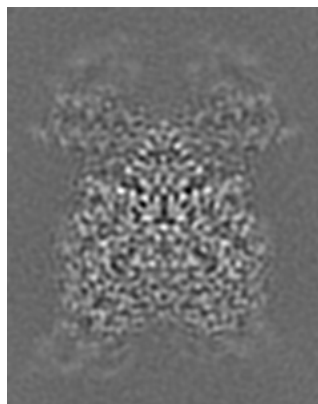
6 Map visualisation [i](#)

This section contains visualisations of the EMDB entry EMD-19357. These allow visual inspection of the internal detail of the map and identification of artifacts.

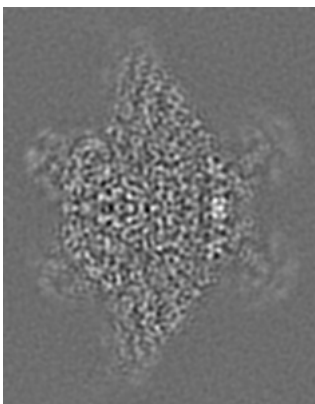
Images derived from a raw map, generated by summing the deposited half-maps, are presented below the corresponding image components of the primary map to allow further visual inspection and comparison with those of the primary map.

6.1 Orthogonal projections [i](#)

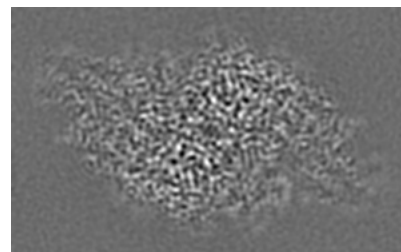
6.1.1 Primary map



X

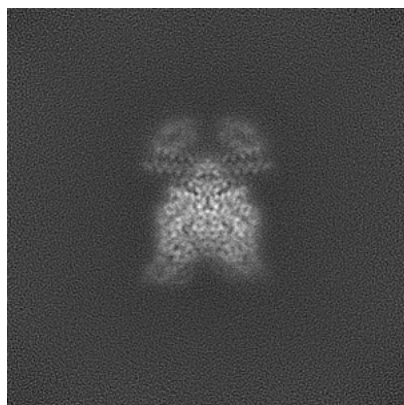


Y

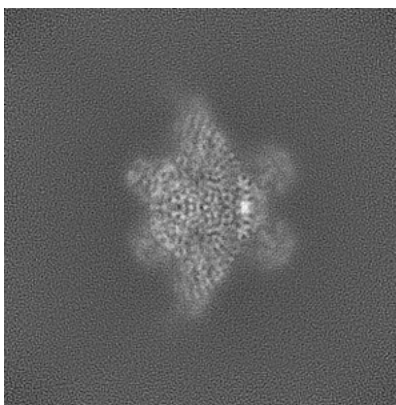


Z

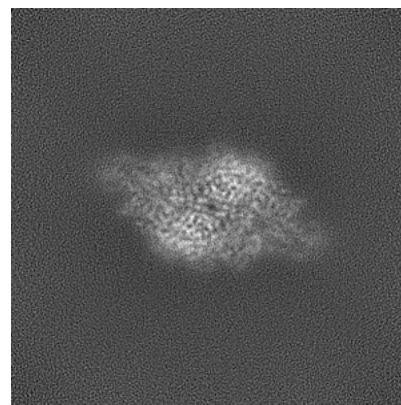
6.1.2 Raw map



X



Y

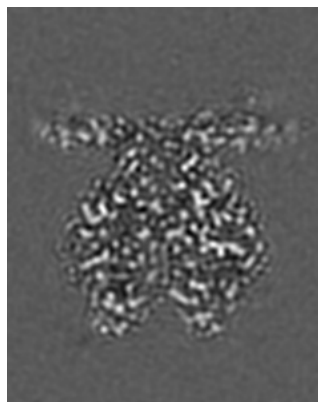


Z

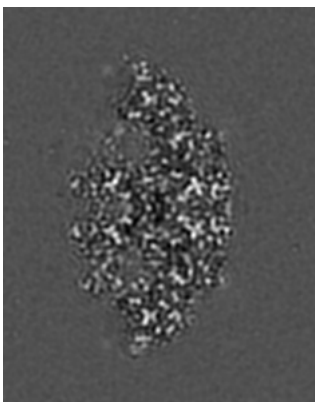
The images above show the map projected in three orthogonal directions.

6.2 Central slices [i](#)

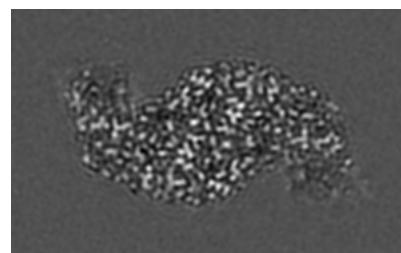
6.2.1 Primary map



X Index: 88

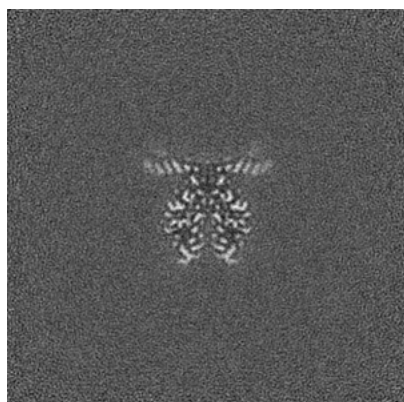


Y Index: 54

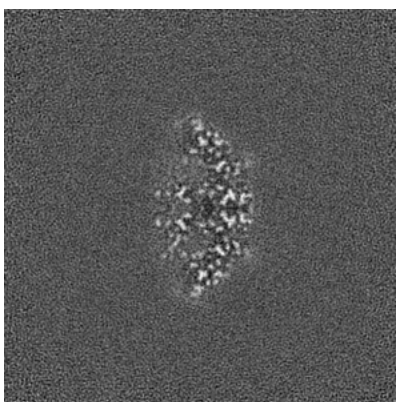


Z Index: 69

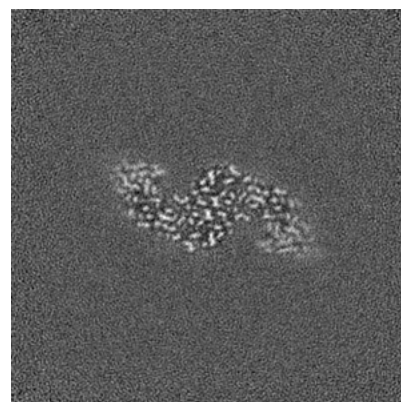
6.2.2 Raw map



X Index: 144



Y Index: 144

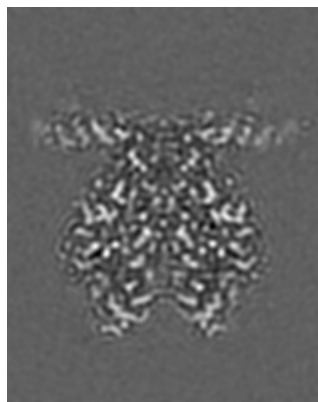


Z Index: 144

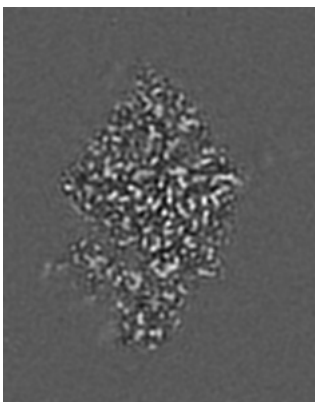
The images above show central slices of the map in three orthogonal directions.

6.3 Largest variance slices [i](#)

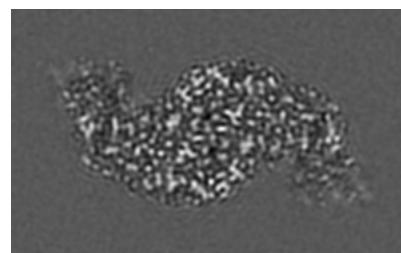
6.3.1 Primary map



X Index: 87

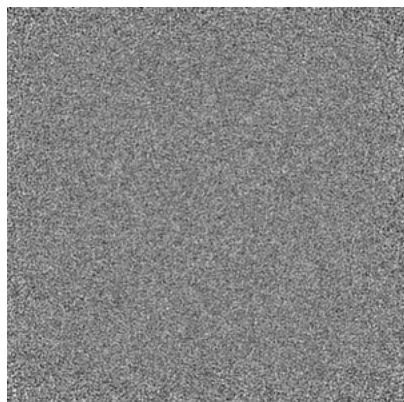


Y Index: 61

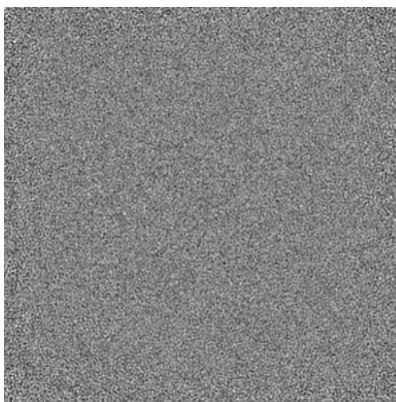


Z Index: 68

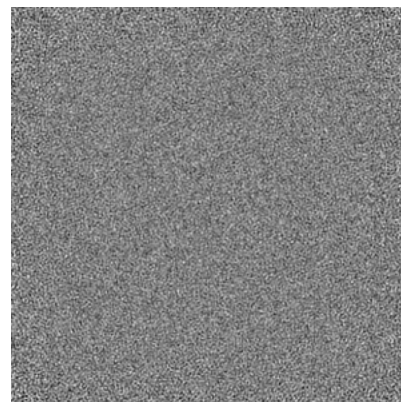
6.3.2 Raw map



X Index: 0



Y Index: 0

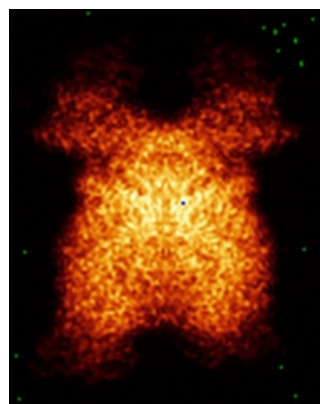


Z Index: 0

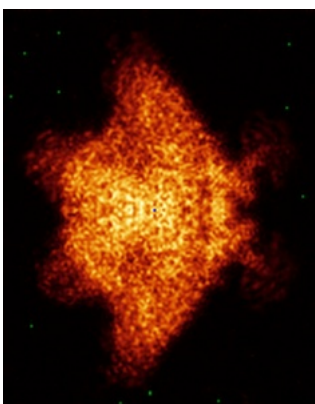
The images above show the largest variance slices of the map in three orthogonal directions.

6.4 Orthogonal standard-deviation projections (False-color) [i](#)

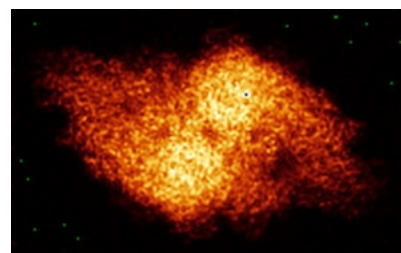
6.4.1 Primary map



X

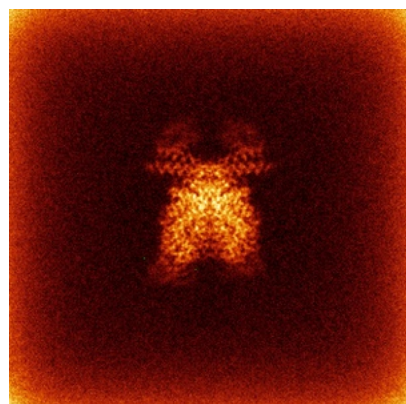


Y

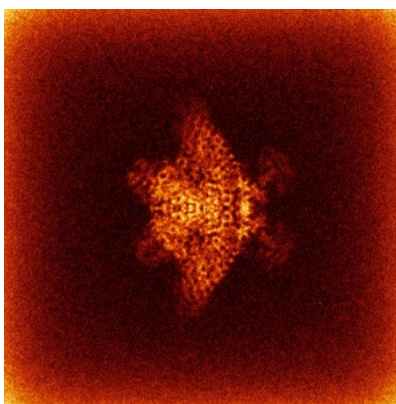


Z

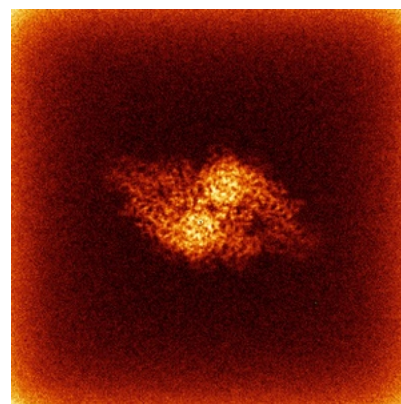
6.4.2 Raw map



X



Y

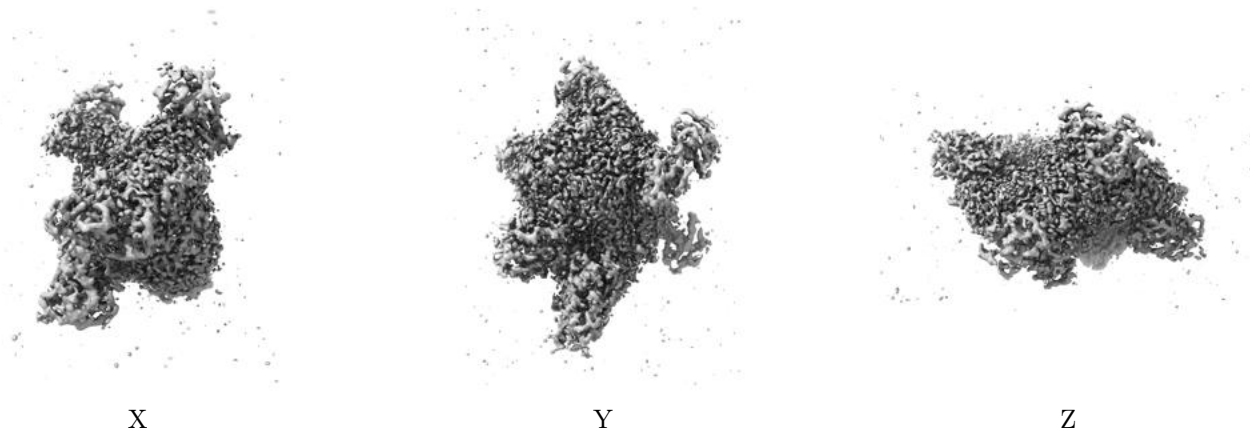


Z

The images above show the map standard deviation projections with false color in three orthogonal directions. Minimum values are shown in green, max in blue, and dark to light orange shades represent small to large values respectively.

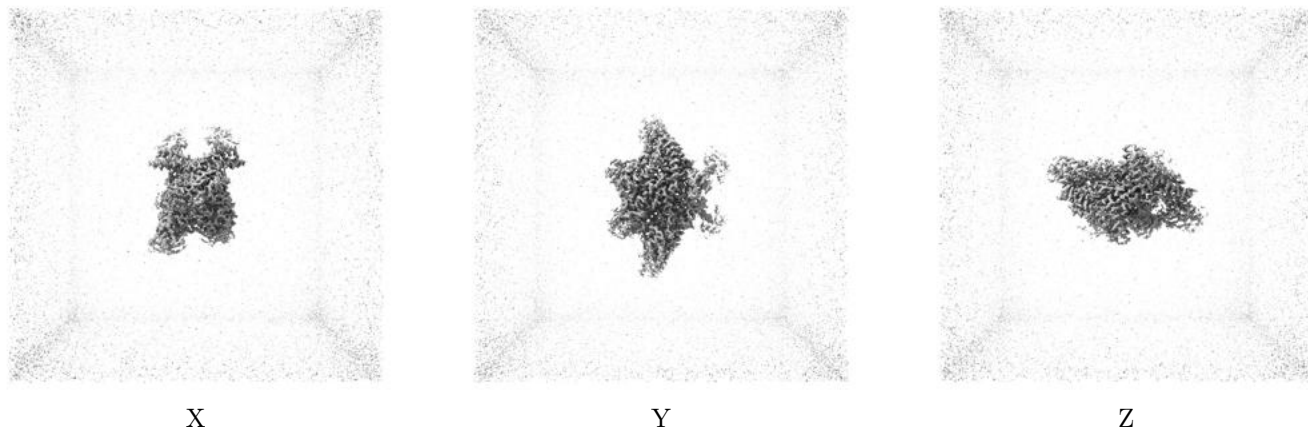
6.5 Orthogonal surface views [i](#)

6.5.1 Primary map



The images above show the 3D surface view of the map at the recommended contour level 0.35. These images, in conjunction with the slice images, may facilitate assessment of whether an appropriate contour level has been provided.

6.5.2 Raw map



These images show the 3D surface of the raw map. The raw map's contour level was selected so that its surface encloses the same volume as the primary map does at its recommended contour level.

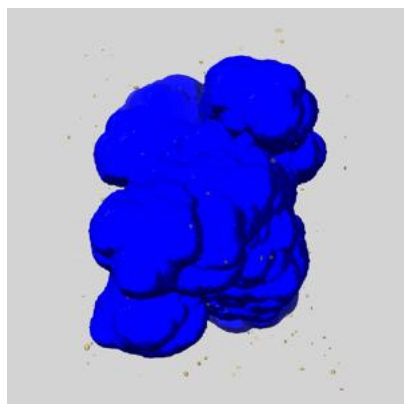
6.6 Mask visualisation [i](#)

This section shows the 3D surface view of the primary map at 50% transparency overlaid with the specified mask at 0% transparency

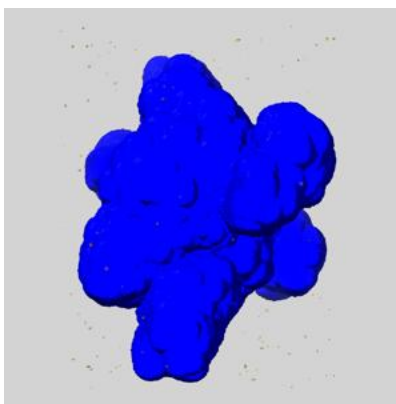
A mask typically either:

- Encompasses the whole structure
- Separates out a domain, a functional unit, a monomer or an area of interest from a larger structure

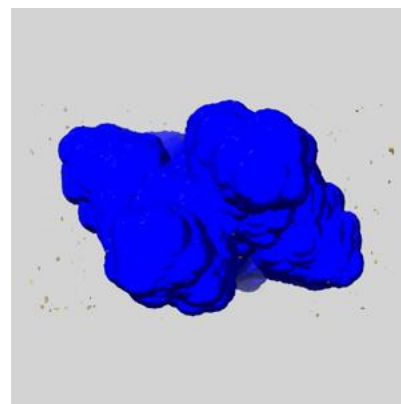
6.6.1 emd_19357_msk_1.map [i](#)



X



Y

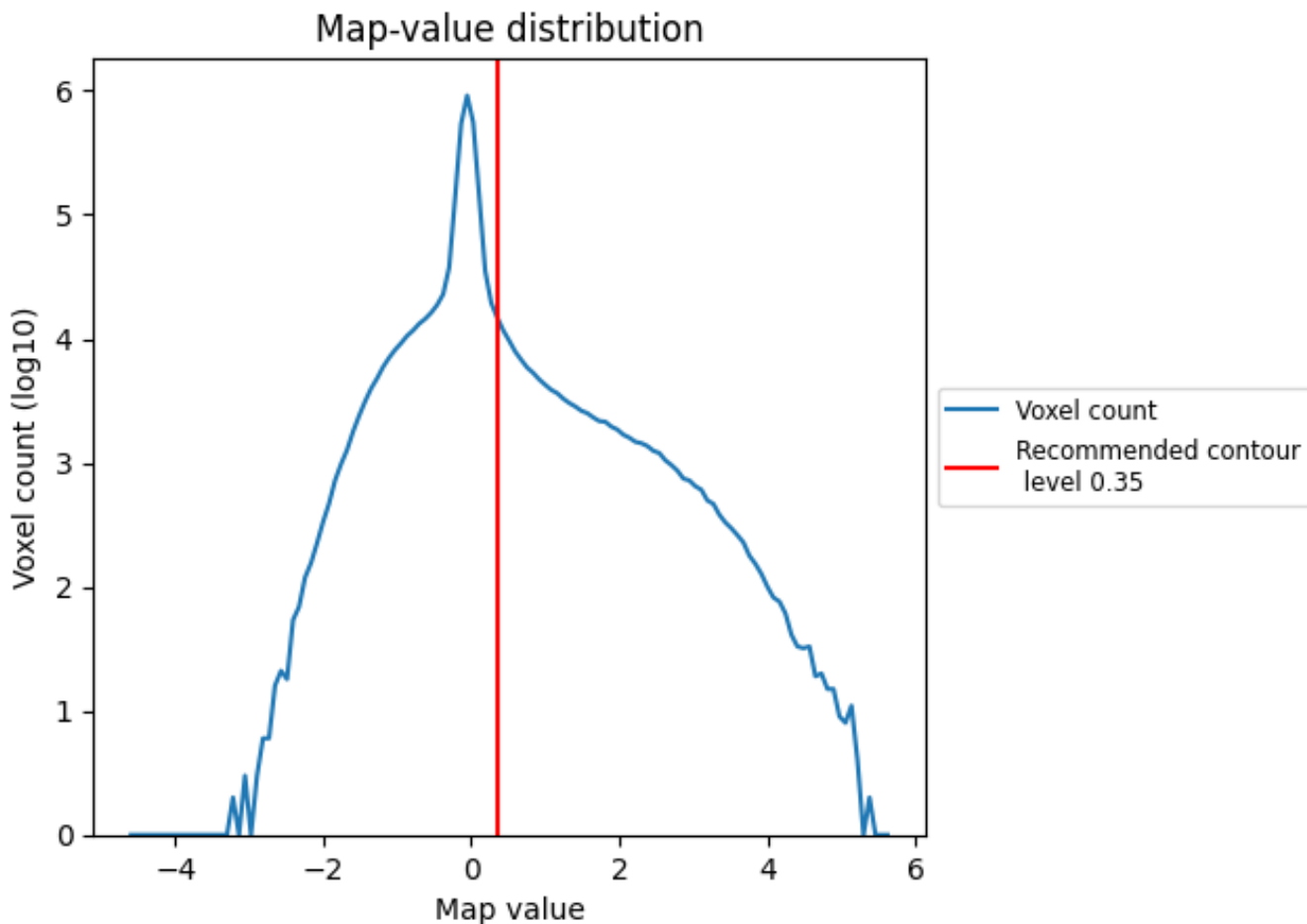


Z

7 Map analysis [i](#)

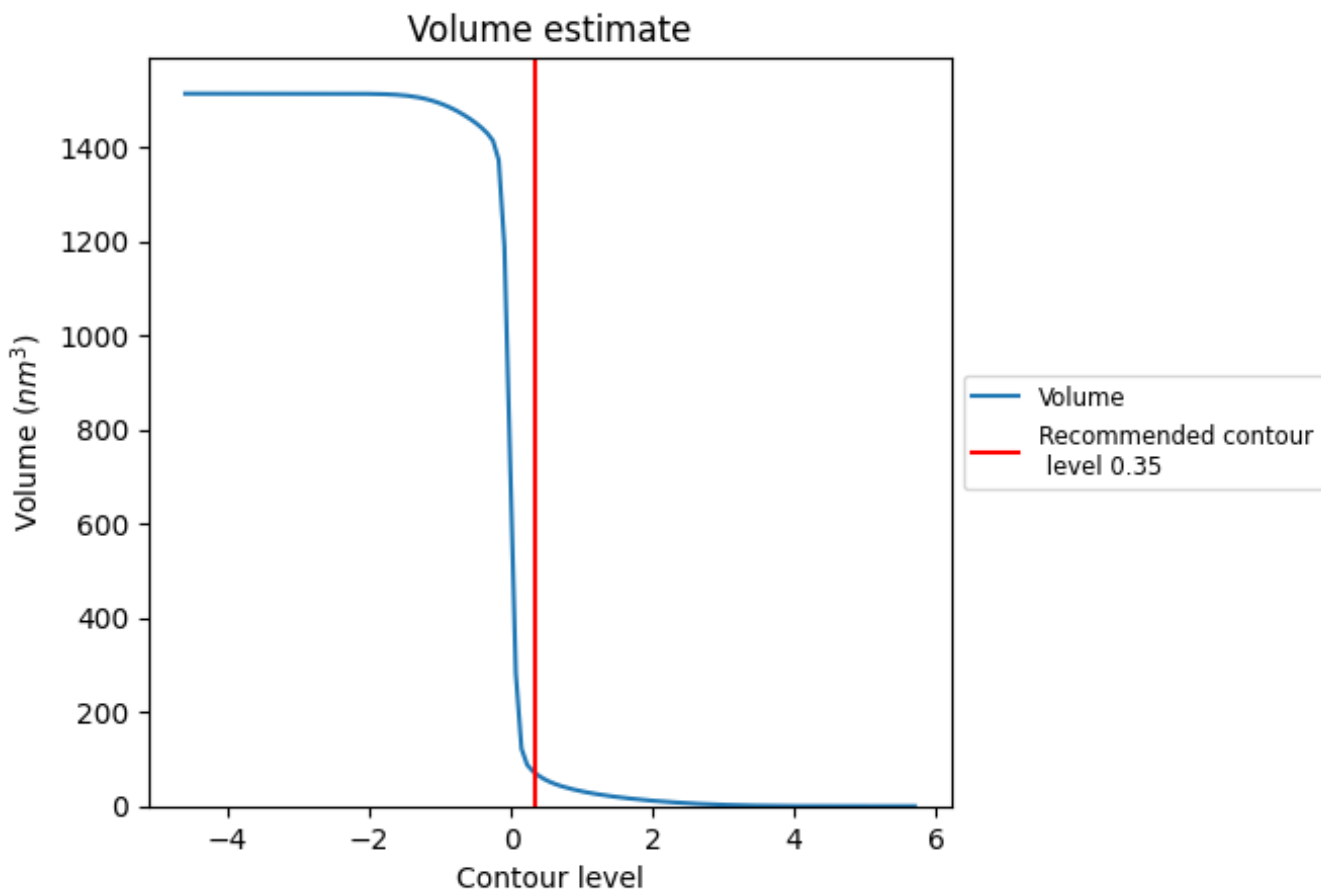
This section contains the results of statistical analysis of the map.

7.1 Map-value distribution [i](#)



The map-value distribution is plotted in 128 intervals along the x-axis. The y-axis is logarithmic. A spike in this graph at zero usually indicates that the volume has been masked.

7.2 Volume estimate [\(i\)](#)



The volume at the recommended contour level is 70 nm³; this corresponds to an approximate mass of 63 kDa.

The volume estimate graph shows how the enclosed volume varies with the contour level. The recommended contour level is shown as a vertical line and the intersection between the line and the curve gives the volume of the enclosed surface at the given level.

7.3 Rotationally averaged power spectrum [\(i\)](#)

This section was not generated. The rotationally averaged power spectrum is only generated for cubic maps.

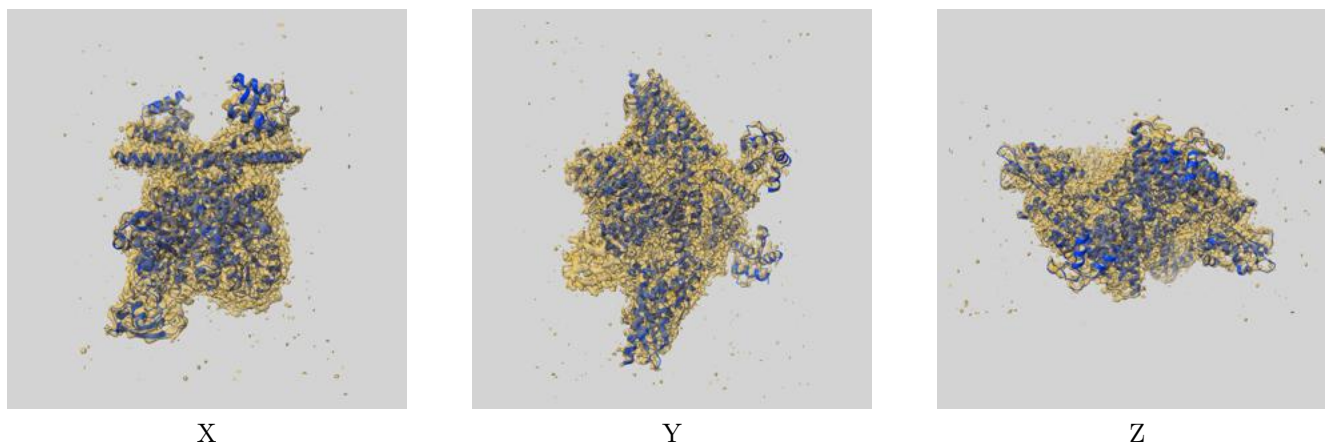
8 Fourier-Shell correlation

This section was not generated. No FSC curve or half-maps provided.

9 Map-model fit [i](#)

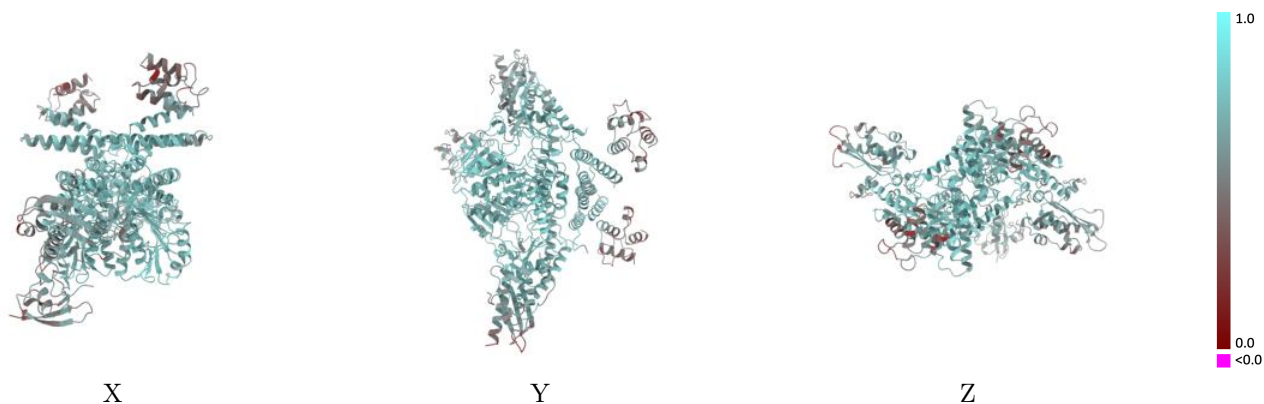
This section contains information regarding the fit between EMDB map EMD-19357 and PDB model 8RMD. Per-residue inclusion information can be found in section [3](#) on page [9](#).

9.1 Map-model overlay [i](#)



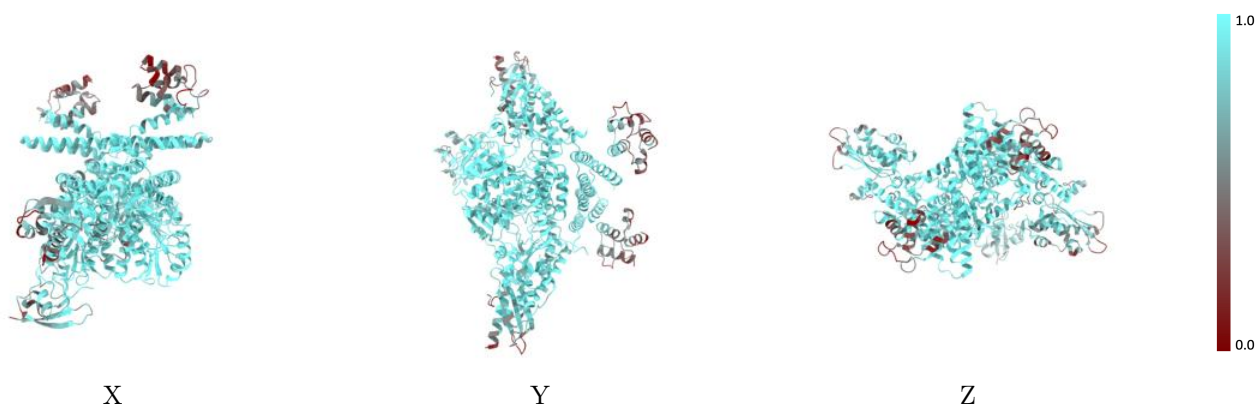
The images above show the 3D surface view of the map at the recommended contour level 0.35 at 50% transparency in yellow overlaid with a ribbon representation of the model coloured in blue. These images allow for the visual assessment of the quality of fit between the atomic model and the map.

9.2 Q-score mapped to coordinate model [\(i\)](#)



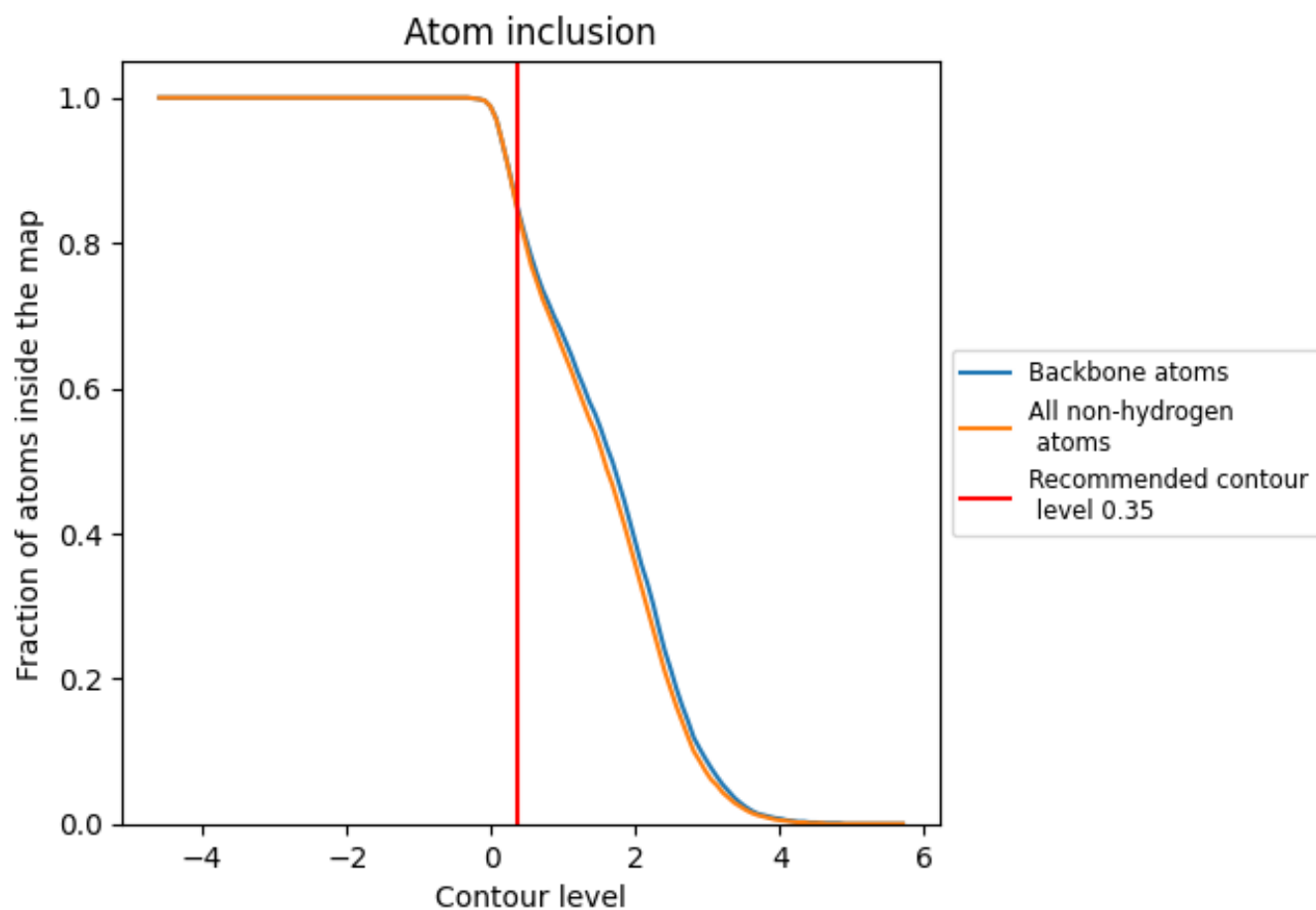
The images above show the model with each residue coloured according to its Q-score. This shows their resolvability in the map with higher Q-score values reflecting better resolvability. Please note: Q-score is calculating the resolvability of atoms, and thus high values are only expected at resolutions at which atoms can be resolved. Low Q-score values may therefore be expected for many entries.

9.3 Atom inclusion mapped to coordinate model [\(i\)](#)



The images above show the model with each residue coloured according to its atom inclusion. This shows to what extent they are inside the map at the recommended contour level (0.35).





















9.4 Atom inclusion [i](#)



At the recommended contour level, 86% of all backbone atoms, 85% of all non-hydrogen atoms, are inside the map.

9.5 Map-model fit summary

The table lists the average atom inclusion at the recommended contour level (0.35) and Q-score for the entire model and for each chain.

Chain	Atom inclusion	Q-score
All	 0.8510	 0.6420
A	 0.9460	 0.7030
B	 0.9410	 0.6790
C	 0.4790	 0.4630
D	 0.6860	 0.5580
E	 0.9580	 0.7090
F	 0.9540	 0.6860
G	 0.4860	 0.4390
H	 0.7790	 0.5680
I	 0.7790	 0.5470

