



wwPDB EM Validation Summary Report ⓘ

Sep 4, 2024 – 05:02 pm BST

PDB ID : 8RNB
EMDB ID : EMD-19393
Title : Influenza B polymerase, encapsidase plus 627(R) / human ANP32A (from "Influenza B polymerase apo-trimer" | Local refinement)
Authors : Arragain, B.; Cusack, S.
Deposited on : 2024-01-09
Resolution : 3.31 Å(reported)

This is a wwPDB EM Validation Summary Report for a publicly released PDB entry.

We welcome your comments at validation@mail.wwpdb.org

A user guide is available at

<https://www.wwpdb.org/validation/2017/EMValidationReportHelp>

with specific help available everywhere you see the ⓘ symbol.

The types of validation reports are described at

<http://www.wwpdb.org/validation/2017/FAQs#types>.

The following versions of software and data (see [references ⓘ](#)) were used in the production of this report:

EMDB validation analysis : 0.0.1.dev112
MolProbity : 4.02b-467
Percentile statistics : 20231227.v01 (using entries in the PDB archive December 27th 2023)
MapQ : 1.9.13
Ideal geometry (proteins) : Engh & Huber (2001)
Ideal geometry (DNA, RNA) : Parkinson et al. (1996)
Validation Pipeline (wwPDB-VP) : 2.38.2

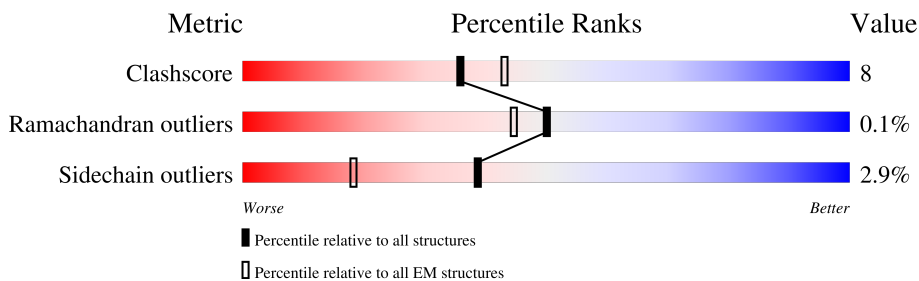
1 Overall quality at a glance i

The following experimental techniques were used to determine the structure:

ELECTRON MICROSCOPY

The reported resolution of this entry is 3.31 Å.

Percentile scores (ranging between 0-100) for global validation metrics of the entry are shown in the following graphic. The table shows the number of entries on which the scores are based.



Metric	Whole archive (#Entries)	EM structures (#Entries)
Clashscore	210492	15764
Ramachandran outliers	207382	16835
Sidechain outliers	206894	16415

The table below summarises the geometric issues observed across the polymeric chains and their fit to the map. The red, orange, yellow and green segments of the bar indicate the fraction of residues that contain outliers for ≥ 3 , 2, 1 and 0 types of geometric quality criteria respectively. A grey segment represents the fraction of residues that are not modelled. The numeric value for each fraction is indicated below the corresponding segment, with a dot representing fractions $\leq 5\%$. The upper red bar (where present) indicates the fraction of residues that have poor fit to the EM map (all-atom inclusion $< 40\%$). The numeric value is given above the bar.

Mol	Chain	Length	Quality of chain
1	D	726	24% (Upper Red) 83% (Green) 13% (Yellow)
2	E	752	13% (Upper Red) 81% (Green) 14% (Yellow)
3	C	799	5% (Upper Red) 14% (Green) 83% (Grey)
3	F	799	21% (Upper Red) 65% (Green) 16% (Yellow) 18% (Grey)
4	G	275	45% (Upper Red) 40% (Green) 15% (Yellow) 44% (Grey)

2 Entry composition i

There are 4 unique types of molecules in this entry. The entry contains 37888 atoms, of which 19011 are hydrogens and 0 are deuteriums.

In the tables below, the AltConf column contains the number of residues with at least one atom in alternate conformation and the Trace column contains the number of residues modelled with at most 2 atoms.

- Molecule 1 is a protein called Polymerase acidic protein.

Mol	Chain	Residues	Atoms						AltConf	Trace
			Total	C	H	N	O	S		
1	D	703	11270	3592	5624	944	1070	40	0	0

- Molecule 2 is a protein called RNA-directed RNA polymerase catalytic subunit.

Mol	Chain	Residues	Atoms						AltConf	Trace
			Total	C	H	N	O	S		
2	E	720	11310	3573	5654	976	1056	51	0	0

- Molecule 3 is a protein called Polymerase basic protein 2.

Mol	Chain	Residues	Atoms						AltConf	Trace
			Total	C	H	N	O	S		
3	F	653	10555	3311	5334	911	963	36	0	0
3	C	138	2251	725	1136	184	198	8	0	0

There are 58 discrepancies between the modelled and reference sequences:

Chain	Residue	Modelled	Actual	Comment	Reference
F	771	GLY	-	expression tag	UNP Q5V8X3
F	772	TRP	-	expression tag	UNP Q5V8X3
F	773	SER	-	expression tag	UNP Q5V8X3
F	774	HIS	-	expression tag	UNP Q5V8X3
F	775	PRO	-	expression tag	UNP Q5V8X3
F	776	GLN	-	expression tag	UNP Q5V8X3
F	777	PHE	-	expression tag	UNP Q5V8X3
F	778	GLU	-	expression tag	UNP Q5V8X3
F	779	LYS	-	expression tag	UNP Q5V8X3
F	780	GLY	-	expression tag	UNP Q5V8X3
F	781	GLY	-	expression tag	UNP Q5V8X3
F	782	GLY	-	expression tag	UNP Q5V8X3
F	783	SER	-	expression tag	UNP Q5V8X3

Continued on next page...

Continued from previous page...

Chain	Residue	Modelled	Actual	Comment	Reference
F	784	GLY	-	expression tag	UNP Q5V8X3
F	785	GLY	-	expression tag	UNP Q5V8X3
F	786	GLY	-	expression tag	UNP Q5V8X3
F	787	SER	-	expression tag	UNP Q5V8X3
F	788	GLY	-	expression tag	UNP Q5V8X3
F	789	GLY	-	expression tag	UNP Q5V8X3
F	790	SER	-	expression tag	UNP Q5V8X3
F	791	ALA	-	expression tag	UNP Q5V8X3
F	792	TRP	-	expression tag	UNP Q5V8X3
F	793	SER	-	expression tag	UNP Q5V8X3
F	794	HIS	-	expression tag	UNP Q5V8X3
F	795	PRO	-	expression tag	UNP Q5V8X3
F	796	GLN	-	expression tag	UNP Q5V8X3
F	797	PHE	-	expression tag	UNP Q5V8X3
F	798	GLU	-	expression tag	UNP Q5V8X3
F	799	LYS	-	expression tag	UNP Q5V8X3
C	771	GLY	-	expression tag	UNP Q5V8X3
C	772	TRP	-	expression tag	UNP Q5V8X3
C	773	SER	-	expression tag	UNP Q5V8X3
C	774	HIS	-	expression tag	UNP Q5V8X3
C	775	PRO	-	expression tag	UNP Q5V8X3
C	776	GLN	-	expression tag	UNP Q5V8X3
C	777	PHE	-	expression tag	UNP Q5V8X3
C	778	GLU	-	expression tag	UNP Q5V8X3
C	779	LYS	-	expression tag	UNP Q5V8X3
C	780	GLY	-	expression tag	UNP Q5V8X3
C	781	GLY	-	expression tag	UNP Q5V8X3
C	782	GLY	-	expression tag	UNP Q5V8X3
C	783	SER	-	expression tag	UNP Q5V8X3
C	784	GLY	-	expression tag	UNP Q5V8X3
C	785	GLY	-	expression tag	UNP Q5V8X3
C	786	GLY	-	expression tag	UNP Q5V8X3
C	787	SER	-	expression tag	UNP Q5V8X3
C	788	GLY	-	expression tag	UNP Q5V8X3
C	789	GLY	-	expression tag	UNP Q5V8X3
C	790	SER	-	expression tag	UNP Q5V8X3
C	791	ALA	-	expression tag	UNP Q5V8X3
C	792	TRP	-	expression tag	UNP Q5V8X3
C	793	SER	-	expression tag	UNP Q5V8X3
C	794	HIS	-	expression tag	UNP Q5V8X3
C	795	PRO	-	expression tag	UNP Q5V8X3
C	796	GLN	-	expression tag	UNP Q5V8X3

Continued on next page...

Continued from previous page...

Chain	Residue	Modelled	Actual	Comment	Reference
C	797	PHE	-	expression tag	UNP Q5V8X3
C	798	GLU	-	expression tag	UNP Q5V8X3
C	799	LYS	-	expression tag	UNP Q5V8X3

- Molecule 4 is a protein called Acidic leucine-rich nuclear phosphoprotein 32 family member A.

Mol	Chain	Residues	Atoms					AltConf	Trace	
			Total	C	H	N	O			S
4	G	155	2502	774	1263	213	248	4	0	0

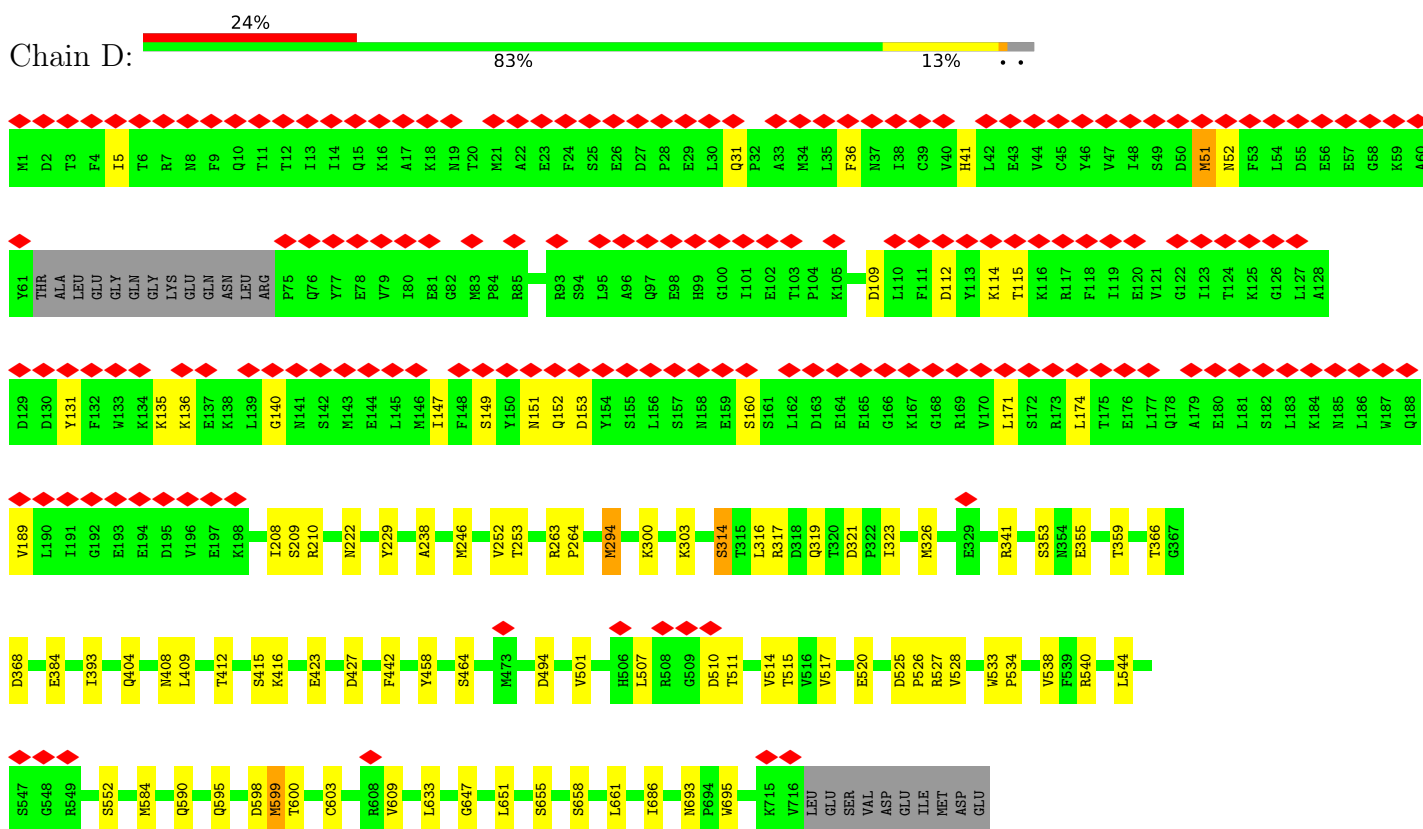
There are 26 discrepancies between the modelled and reference sequences:

Chain	Residue	Modelled	Actual	Comment	Reference
G	-25	MET	-	initiating methionine	UNP P39687
G	-24	LYS	-	expression tag	UNP P39687
G	-23	HIS	-	expression tag	UNP P39687
G	-22	HIS	-	expression tag	UNP P39687
G	-21	HIS	-	expression tag	UNP P39687
G	-20	HIS	-	expression tag	UNP P39687
G	-19	HIS	-	expression tag	UNP P39687
G	-18	HIS	-	expression tag	UNP P39687
G	-17	PRO	-	expression tag	UNP P39687
G	-16	MET	-	expression tag	UNP P39687
G	-15	SER	-	expression tag	UNP P39687
G	-14	ASP	-	expression tag	UNP P39687
G	-13	TYR	-	expression tag	UNP P39687
G	-12	ASP	-	expression tag	UNP P39687
G	-11	ILE	-	expression tag	UNP P39687
G	-10	PRO	-	expression tag	UNP P39687
G	-9	THR	-	expression tag	UNP P39687
G	-8	THR	-	expression tag	UNP P39687
G	-7	GLU	-	expression tag	UNP P39687
G	-6	ASN	-	expression tag	UNP P39687
G	-5	LEU	-	expression tag	UNP P39687
G	-4	TYR	-	expression tag	UNP P39687
G	-3	PHE	-	expression tag	UNP P39687
G	-2	GLN	-	expression tag	UNP P39687
G	-1	GLY	-	expression tag	UNP P39687
G	0	ALA	-	expression tag	UNP P39687

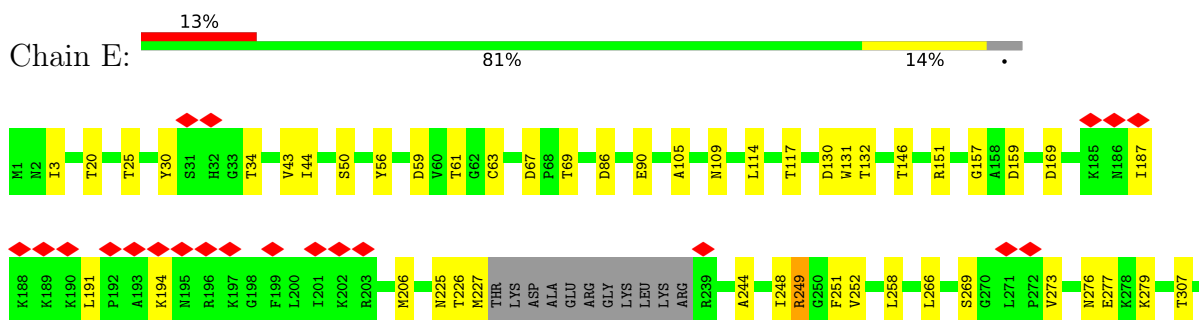
3 Residue-property plots

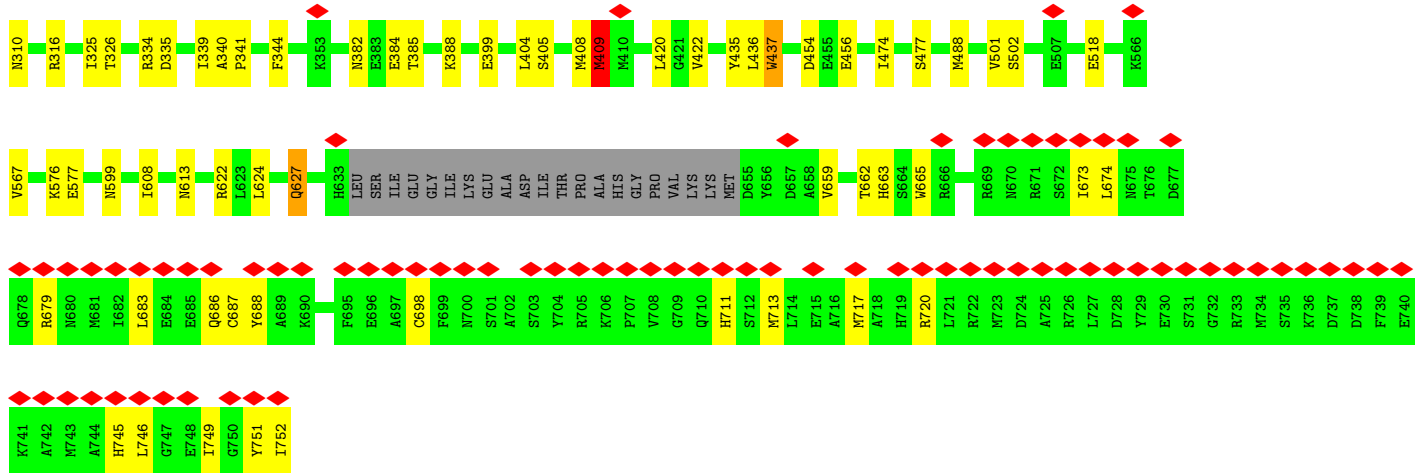
These plots are drawn for all protein, RNA, DNA and oligosaccharide chains in the entry. The first graphic for a chain summarises the proportions of the various outlier classes displayed in the second graphic. The second graphic shows the sequence view annotated by issues in geometry and atom inclusion in map density. Residues are color-coded according to the number of geometric quality criteria for which they contain at least one outlier: green = 0, yellow = 1, orange = 2 and red = 3 or more. A red diamond above a residue indicates a poor fit to the EM map for this residue (all-atom inclusion < 40%). Stretches of 2 or more consecutive residues without any outlier are shown as a green connector. Residues present in the sample, but not in the model, are shown in grey.

- Molecule 1: Polymerase acidic protein

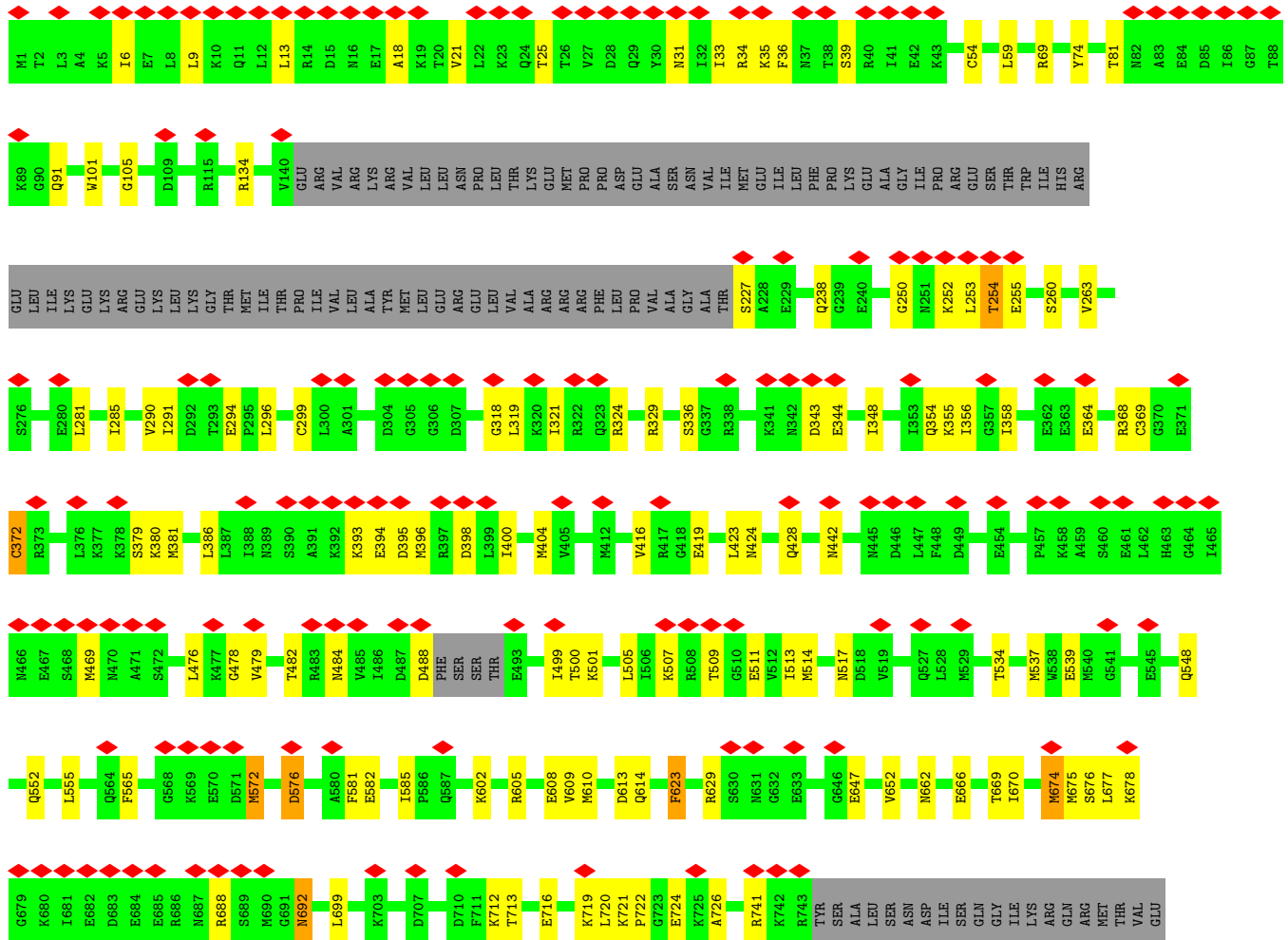


- Molecule 2: RNA-directed RNA polymerase catalytic subunit

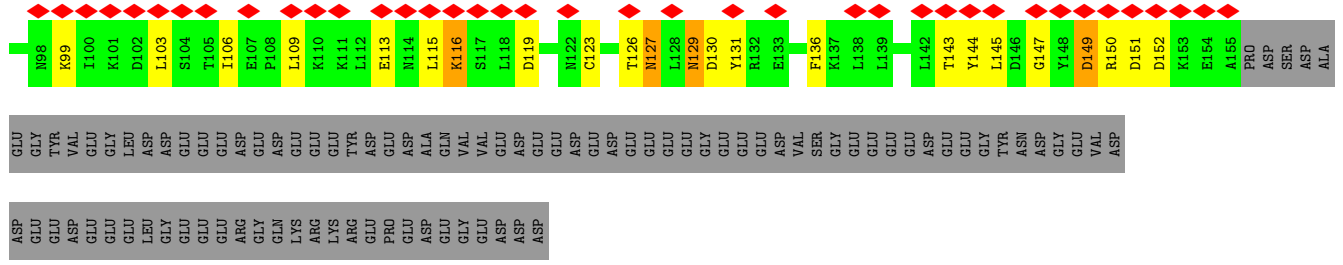




• Molecule 3: Polymerase basic protein 2



SER	6679
MET	6680
GLY	1681
TRP	6682
ALA	6683
LEU	6684
SER	6685
TRP	6686
HIS	6687
PRO	6688
GLN	6689
PHE	6690
GLU	6691
LYS	6692
GLY	6693
GLY	6694
GLY	6695
SER	6703
GLY	6707
SER	6710
ALA	6711
TRP	6713
SER	6716
HIS	6719
PRO	6720
GLN	6721
PHE	6722
GLU	6723
LYS	6724
ALA	6725
GLY	6726
GLY	6727
GLY	6728
GLY	6729
GLY	6730
GLY	6731
GLY	6732
GLY	6733
GLY	6734
GLY	6735
GLY	6736
GLY	6737
GLY	6738
GLY	6739
GLY	6740
GLY	6741
GLY	6742
GLY	6743
GLY	6744
GLY	6745
GLY	6746
GLY	6747
GLY	6748
GLY	6749
GLY	6750
GLY	6751
GLY	6752
GLY	6753
GLY	6754
GLY	6755
GLY	6756
GLY	6757
GLY	6758
GLY	6759
GLY	6760
GLY	6761
GLY	6762
GLY	6763
GLY	6764
GLY	6765
GLY	6766
GLY	6767
GLY	6768
GLY	6769
GLY	6770
GLY	6771
GLY	6772
GLY	6773
GLY	6774
GLY	6775
GLY	6776
GLY	6777
GLY	6778
GLY	6779
GLY	6780
GLY	6781
GLY	6782
GLY	6783
GLY	6784
GLY	6785
GLY	6786
GLY	6787
GLY	6788
GLY	6789
GLY	6790
GLY	6791
GLY	6792
GLY	6793
GLY	6794
GLY	6795
GLY	6796
GLY	6797
GLY	6798
GLY	6799
GLY	6800
GLY	6801
GLY	6802
GLY	6803
GLY	6804
GLY	6805
GLY	6806
GLY	6807
GLY	6808
GLY	6809
GLY	6810
GLY	6811
GLY	6812
GLY	6813
GLY	6814
GLY	6815
GLY	6816
GLY	6817
GLY	6818
GLY	6819
GLY	6820
GLY	6821
GLY	6822
GLY	6823
GLY	6824
GLY	6825
GLY	6826
GLY	6827
GLY	6828
GLY	6829
GLY	6830
GLY	6831
GLY	6832
GLY	6833
GLY	6834
GLY	6835
GLY	6836
GLY	6837
GLY	6838
GLY	6839
GLY	6840
GLY	6841
GLY	6842
GLY	6843
GLY	6844
GLY	6845
GLY	6846
GLY	6847
GLY	6848
GLY	6849
GLY	6850
GLY	6851
GLY	6852
GLY	6853
GLY	6854
GLY	6855
GLY	6856
GLY	6857
GLY	6858
GLY	6859
GLY	6860
GLY	6861
GLY	6862
GLY	6863
GLY	6864
GLY	6865
GLY	6866
GLY	6867
GLY	6868
GLY	6869
GLY	6870
GLY	6871
GLY	6872
GLY	6873
GLY	6874
GLY	6875
GLY	6876
GLY	6877
GLY	6878
GLY	6879
GLY	6880
GLY	6881
GLY	6882
GLY	6883
GLY	6884
GLY	6885
GLY	6886
GLY	6887
GLY	6888
GLY	6889
GLY	6890
GLY	6891
GLY	6892
GLY	6893
GLY	6894
GLY	6895
GLY	6896
GLY	6897
GLY	6898
GLY	6899
GLY	6900
GLY	6901
GLY	6902
GLY	6903
GLY	6904
GLY	6905
GLY	6906
GLY	6907
GLY	6908
GLY	6909
GLY	6910
GLY	6911
GLY	6912
GLY	6913
GLY	6914
GLY	6915
GLY	6916
GLY	6917
GLY	6918
GLY	6919
GLY	6920
GLY	6921
GLY	6922
GLY	6923
GLY	6924
GLY	6925
GLY	6926
GLY	6927
GLY	6928
GLY	6929
GLY	6930
GLY	6931
GLY	6932
GLY	6933
GLY	6934
GLY	6935
GLY	6936
GLY	6937
GLY	6938
GLY	6939
GLY	6940
GLY	6941
GLY	6942
GLY	6943
GLY	6944
GLY	6945
GLY	6946
GLY	6947
GLY	6948
GLY	6949
GLY	6950
GLY	6951
GLY	6952
GLY	6953
GLY	6954
GLY	6955
GLY	6956
GLY	6957
GLY	6958
GLY	6959
GLY	6960
GLY	6961
GLY	6962
GLY	6963
GLY	6964
GLY	6965
GLY	6966
GLY	6967
GLY	6968
GLY	6969
GLY	6970
GLY	6971
GLY	6972
GLY	6973
GLY	6974
GLY	6975
GLY	6976
GLY	6977
GLY	6978
GLY	6979
GLY	6980
GLY	6981
GLY	6982
GLY	6983
GLY	6984
GLY	6985
GLY	6986
GLY	6987
GLY	6988
GLY	6989
GLY	6990
GLY	6991
GLY	6992
GLY	6993
GLY	6994
GLY	6995
GLY	6996
GLY	6997
GLY	6998
GLY	6999
GLY	7000
GLY	7001
GLY	7002
GLY	7003
GLY	7004
GLY	7005
GLY	7006
GLY	7007
GLY	7008
GLY	7009
GLY	7010
GLY	7011
GLY	7012
GLY	7013
GLY	7014
GLY	7015
GLY	7016
GLY	7017
GLY	7018
GLY	7019
GLY	7020
GLY	7021
GLY	7022
GLY	7023
GLY	7024
GLY	7025
GLY	7026
GLY	7027
GLY	7028
GLY	7029
GLY	7030
GLY	7031
GLY	7032
GLY	7033
GLY	7034
GLY	7035
GLY	7036
GLY	7037
GLY	7038
GLY	7039
GLY	7040
GLY	7041
GLY	7042
GLY	7043
GLY	7044
GLY	7045
GLY	7046
GLY	7047
GLY	7048
GLY	7049
GLY	7050
GLY	7051
GLY	7052
GLY	7053
GLY	7054
GLY	7055
GLY	7056
GLY	7057
GLY	7058
GLY	7059
GLY	7060
GLY	7061
GLY	7062
GLY	7063
GLY	7064
GLY	7065
GLY	7066
GLY	7067
GLY	7068
GLY	7069
GLY	7070
GLY	7071
GLY	7072
GLY	7073
GLY	7074
GLY	7075
GLY	7076
GLY	7077
GLY	7078
GLY	7079
GLY	7080
GLY	7081
GLY	7082
GLY	7083
GLY	7084
GLY	7085
GLY	7086
GLY	7087
GLY	7088
GLY	7089
GLY	7090
GLY	7091
GLY	7092
GLY	7093
GLY	7094
GLY	7095
GLY	7096
GLY	7097
GLY	7098
GLY	7099
GLY	7100
GLY	7101
GLY	7102
GLY	7103
GLY	7104
GLY	7105
GLY	7106
GLY	7107
GLY	7108
GLY	7109
GLY	7110
GLY	7111
GLY	7112
GLY	7113
GLY	7114
GLY	7115
GLY	7116
GLY	7117
GLY	7118
GLY	7119
GLY	7120
GLY	7121
GLY	7122
GLY	7123
GLY	7124
GLY	7125
GLY	7126
GLY	7127
GLY	7128
GLY	7129
GLY	7130
GLY	7131
GLY	7132
GLY	7133
GLY	7134
GLY	7135
GLY	7136
GLY	7137
GLY	7138
GLY	7139
GLY	7140
GLY	7141
GLY	7142
GLY	7143
GLY	7144
GLY	7145
GLY	7146
GLY	7147
GLY	7148
GLY	7149
GLY	7150
GLY	7151
GLY	7152
GLY	7153
GLY	7154
GLY	7155
GLY	7156
GLY	7157
GLY	7158
GLY	7159
GLY	7160
GLY	7161
GLY	7162
GLY	7163
GLY	7164
GLY	7165
GLY	7166
GLY	7167
GLY	7168
GLY	7169
GLY	7170
GLY	7171
GLY	7172
GLY	7173
GLY	7174
GLY	7175
GLY	7176
GLY	7177
GLY	7178
GLY	7179
GLY	7180
GLY	7181
GLY	7182
GLY	7183
GLY	7184
GLY	7185
GLY	7186
GLY	7187
GLY	7188
GLY	7189
GLY	7190
GLY	7191
GLY	7192
GLY	7193
GLY	7194
GLY	7195
GLY	7196
GLY	7197
GLY	7198
GLY	7199
GLY	7200
GLY	7201
GLY	7202
GLY	7203
GLY	7204
GLY	7205
GLY	7206
GLY	7207
GLY	7208
GLY	7209
GLY	7210
GLY	7211
GLY	7212
GLY	7213
GLY	7214
GLY	7215
GLY	7216
GLY	7217
GLY	7218
GLY	7219
GLY	7220
GLY	7221
GLY	7222
GLY	7223
GLY	7224
GLY	7225
GLY	7226
GLY	7227
GLY	7228
GLY	7229
GLY	7230
GLY	7231
GLY	7232
GLY	7233
GLY	7234
GLY	7235
GLY	7236
GLY	7237
GLY	7238
GLY	7239
GLY	7240
GLY	7241
GLY	7242
GLY	7243
GLY	7244
GLY	7245
GLY	7246
GLY	7247
GLY	7248
GLY	7249
GLY	7250
GLY	7251
GLY	7252
GLY	7253
GLY	7254



4 Experimental information

Property	Value	Source
EM reconstruction method	SINGLE PARTICLE	Depositor
Imposed symmetry	POINT, Not provided	
Number of particles used	24051	Depositor
Resolution determination method	FSC 0.143 CUT-OFF	Depositor
CTF correction method	PHASE FLIPPING AND AMPLITUDE CORRECTION	Depositor
Microscope	TFS KRIOS	Depositor
Voltage (kV)	300	Depositor
Electron dose ($e^-/\text{\AA}^2$)	40	Depositor
Minimum defocus (nm)	800	Depositor
Maximum defocus (nm)	2000	Depositor
Magnification	Not provided	
Image detector	GATAN K3 BIOQUANTUM (6k x 4k)	Depositor
Maximum map value	2.523	Depositor
Minimum map value	-1.588	Depositor
Average map value	-0.001	Depositor
Map value standard deviation	0.074	Depositor
Recommended contour level	0.4	Depositor
Map size (Å)	430.08, 430.08, 430.08	wwPDB
Map dimensions	512, 512, 512	wwPDB
Map angles (°)	90.0, 90.0, 90.0	wwPDB
Pixel spacing (Å)	0.84, 0.84, 0.84	Depositor

5 Model quality [i](#)

5.1 Standard geometry [i](#)

The Z score for a bond length (or angle) is the number of standard deviations the observed value is removed from the expected value. A bond length (or angle) with $|Z| > 5$ is considered an outlier worth inspection. RMSZ is the root-mean-square of all Z scores of the bond lengths (or angles).

Mol	Chain	Bond lengths		Bond angles	
		RMSZ	# Z >5	RMSZ	# Z >5
1	D	0.25	0/5762	0.45	0/7769
2	E	0.27	0/5768	0.49	1/7778 (0.0%)
3	C	0.25	0/1140	0.46	0/1532
3	F	0.25	0/5307	0.50	0/7126
4	G	0.24	0/1252	0.50	0/1685
All	All	0.26	0/19229	0.48	1/25890 (0.0%)

There are no bond length outliers.

All (1) bond angle outliers are listed below:

Mol	Chain	Res	Type	Atoms	Z	Observed(°)	Ideal(°)
2	E	409	MET	CB-CG-SD	5.12	127.76	112.40

There are no chirality outliers.

There are no planarity outliers.

5.2 Too-close contacts [i](#)

In the following table, the Non-H and H(model) columns list the number of non-hydrogen atoms and hydrogen atoms in the chain respectively. The H(added) column lists the number of hydrogen atoms added and optimized by MolProbity. The Clashes column lists the number of clashes within the asymmetric unit, whereas Symm-Clashes lists symmetry-related clashes.

Mol	Chain	Non-H	H(model)	H(added)	Clashes	Symm-Clashes
1	D	5646	5624	5624	62	0
2	E	5656	5654	5655	79	0
3	C	1115	1136	1136	14	0
3	F	5221	5334	5334	110	0
4	G	1239	1263	1265	44	0
All	All	18877	19011	19014	286	0

The all-atom clashscore is defined as the number of clashes found per 1000 atoms (including hydrogen atoms). The all-atom clashscore for this structure is 8.

The worst 5 of 286 close contacts within the same asymmetric unit are listed below, sorted by their clash magnitude.

Atom-1	Atom-2	Interatomic distance (Å)	Clash overlap (Å)
2:E:746:LEU:HB3	2:E:752:ILE:CD1	1.83	1.07
3:F:629:ARG:NH1	4:G:151:ASP:OD2	1.90	1.03
2:E:746:LEU:HB3	2:E:752:ILE:HD13	1.03	1.03
4:G:47:LEU:CD1	4:G:69:LEU:HD13	1.97	0.93
3:F:720:LEU:HD11	3:F:724:GLU:CD	1.89	0.91

There are no symmetry-related clashes.

5.3 Torsion angles [i](#)

5.3.1 Protein backbone [i](#)

In the following table, the Percentiles column shows the percent Ramachandran outliers of the chain as a percentile score with respect to all PDB entries followed by that with respect to all EM entries.

The Analysed column shows the number of residues for which the backbone conformation was analysed, and the total number of residues.

Mol	Chain	Analysed	Favoured	Allowed	Outliers	Percentiles	
1	D	699/726 (96%)	679 (97%)	20 (3%)	0	100	100
2	E	714/752 (95%)	675 (94%)	38 (5%)	1 (0%)	48	77
3	C	136/799 (17%)	127 (93%)	9 (7%)	0	100	100
3	F	647/799 (81%)	613 (95%)	33 (5%)	1 (0%)	44	72
4	G	153/275 (56%)	141 (92%)	12 (8%)	0	100	100
All	All	2349/3351 (70%)	2235 (95%)	112 (5%)	2 (0%)	50	77

All (2) Ramachandran outliers are listed below:

Mol	Chain	Res	Type
2	E	686	GLN
3	F	254	THR

5.3.2 Protein sidechains [i](#)

In the following table, the Percentiles column shows the percent sidechain outliers of the chain as a percentile score with respect to all PDB entries followed by that with respect to all EM entries.

The Analysed column shows the number of residues for which the sidechain conformation was analysed, and the total number of residues.

Mol	Chain	Analysed	Rotameric	Outliers	Percentiles	
1	D	625/645 (97%)	606 (97%)	19 (3%)	36	63
2	E	619/645 (96%)	605 (98%)	14 (2%)	45	69
3	C	122/693 (18%)	118 (97%)	4 (3%)	33	60
3	F	570/693 (82%)	555 (97%)	15 (3%)	41	66
4	G	144/251 (57%)	136 (94%)	8 (6%)	17	45
All	All	2080/2927 (71%)	2020 (97%)	60 (3%)	39	64

5 of 60 residues with a non-rotameric sidechain are listed below:

Mol	Chain	Res	Type
2	E	488	MET
4	G	152	ASP
3	F	227	SER
4	G	149	ASP
3	C	673	ARG

Sometimes sidechains can be flipped to improve hydrogen bonding and reduce clashes. There are no such sidechains identified.

5.3.3 RNA [i](#)

There are no RNA molecules in this entry.

5.4 Non-standard residues in protein, DNA, RNA chains [i](#)

There are no non-standard protein/DNA/RNA residues in this entry.

5.5 Carbohydrates [i](#)

There are no oligosaccharides in this entry.

5.6 Ligand geometry [i](#)

There are no ligands in this entry.

5.7 Other polymers [i](#)

There are no such residues in this entry.

5.8 Polymer linkage issues [i](#)

There are no chain breaks in this entry.

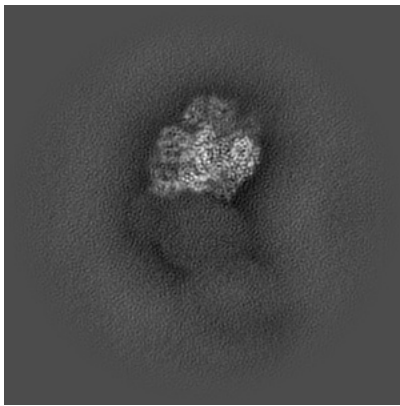
6 Map visualisation [i](#)

This section contains visualisations of the EMDB entry EMD-19393. These allow visual inspection of the internal detail of the map and identification of artifacts.

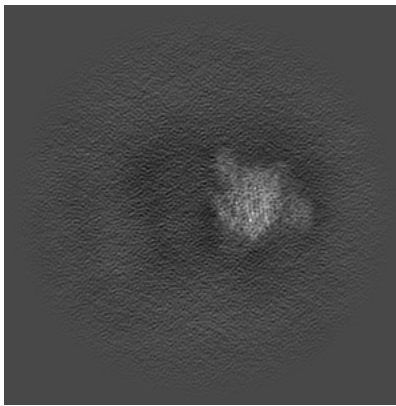
Images derived from a raw map, generated by summing the deposited half-maps, are presented below the corresponding image components of the primary map to allow further visual inspection and comparison with those of the primary map.

6.1 Orthogonal projections [i](#)

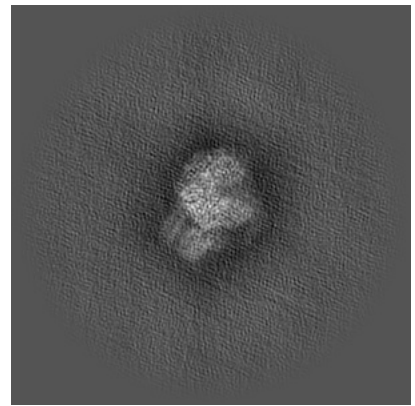
6.1.1 Primary map



X

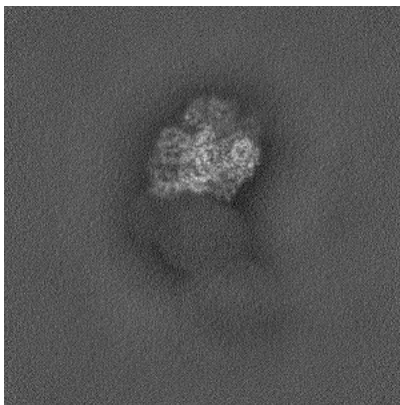


Y

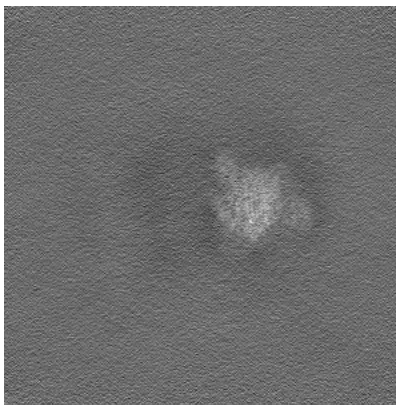


Z

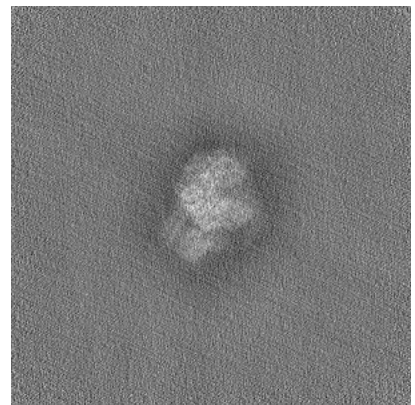
6.1.2 Raw map



X



Y

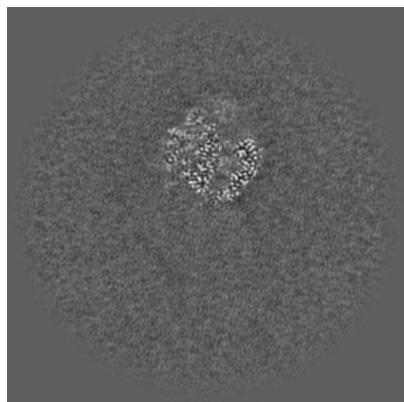


Z

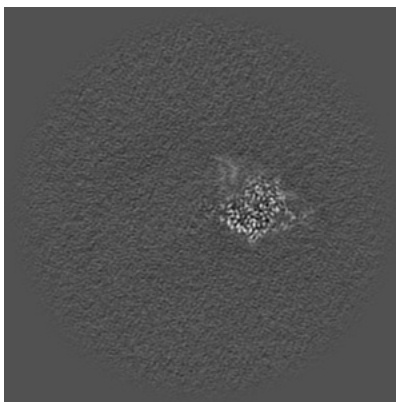
The images above show the map projected in three orthogonal directions.

6.2 Central slices [i](#)

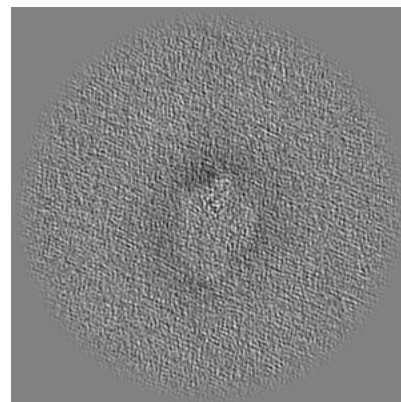
6.2.1 Primary map



X Index: 256

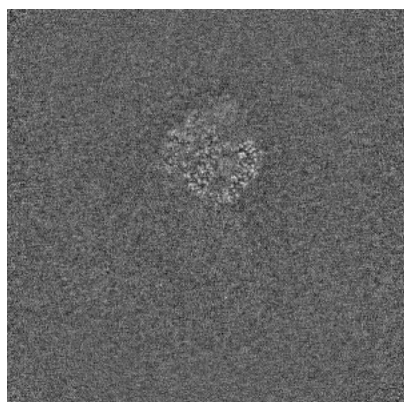


Y Index: 256

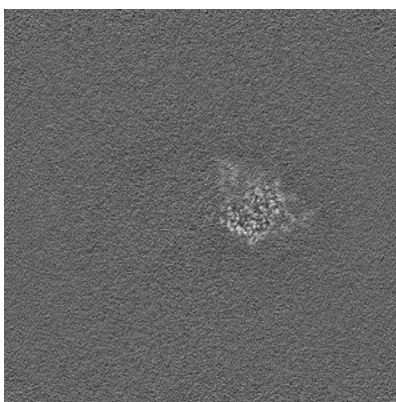


Z Index: 256

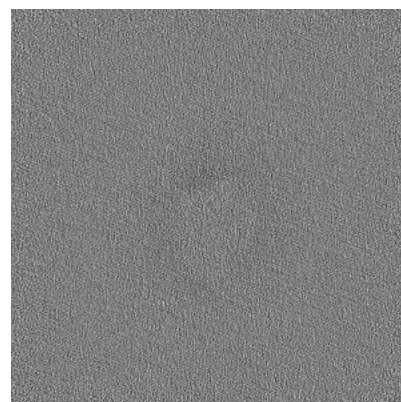
6.2.2 Raw map



X Index: 256



Y Index: 256

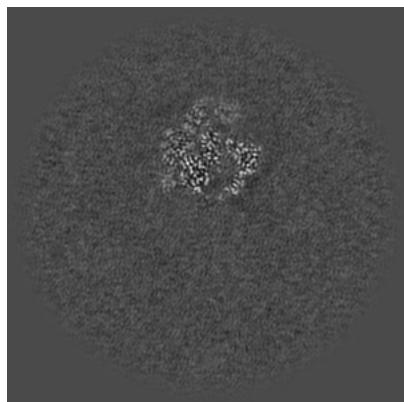


Z Index: 256

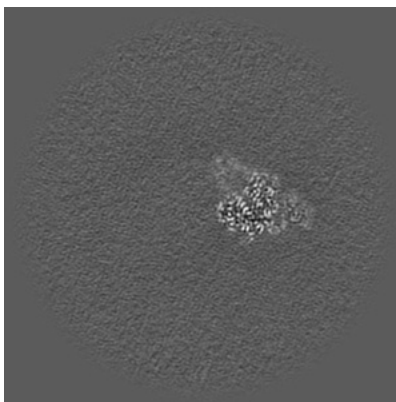
The images above show central slices of the map in three orthogonal directions.

6.3 Largest variance slices [i](#)

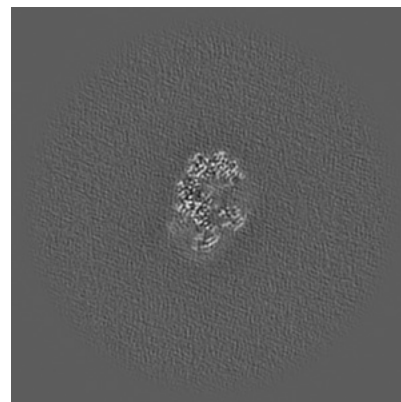
6.3.1 Primary map



X Index: 250

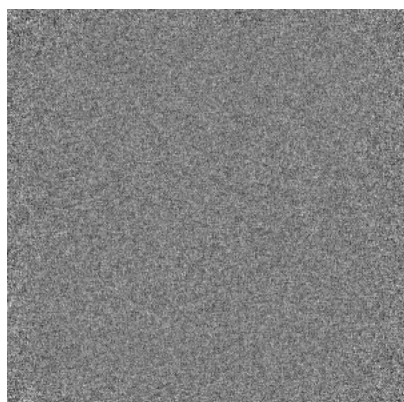


Y Index: 251

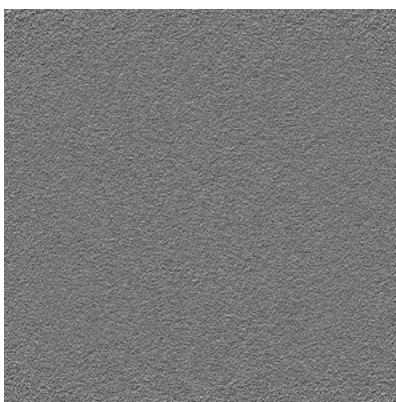


Z Index: 316

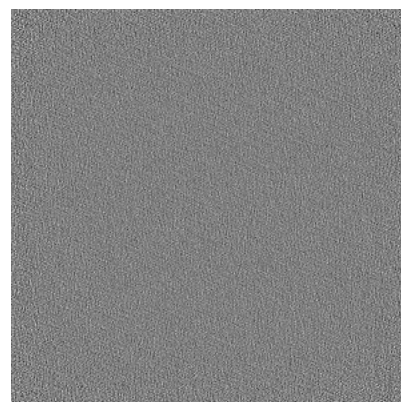
6.3.2 Raw map



X Index: 0



Y Index: 0

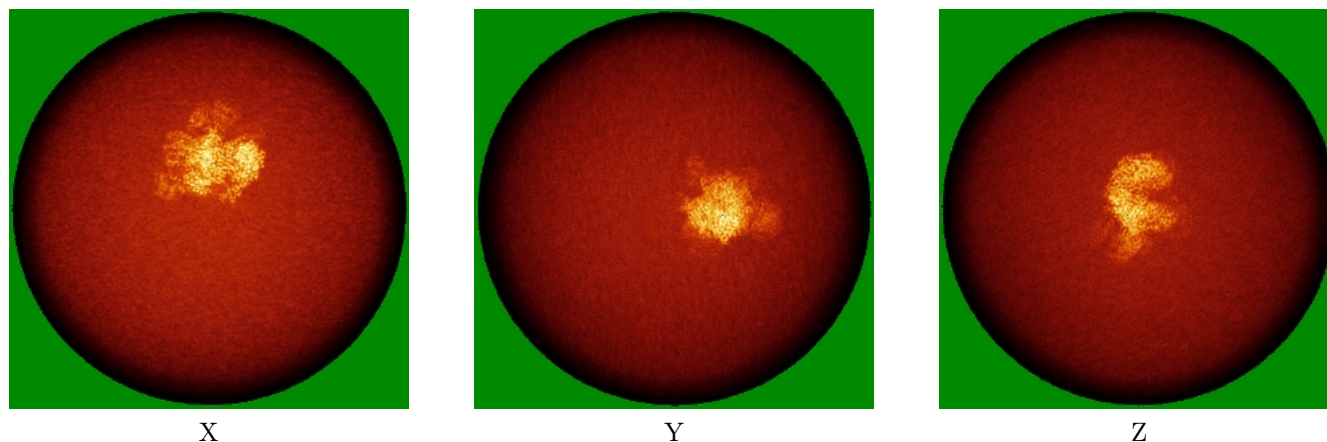


Z Index: 0

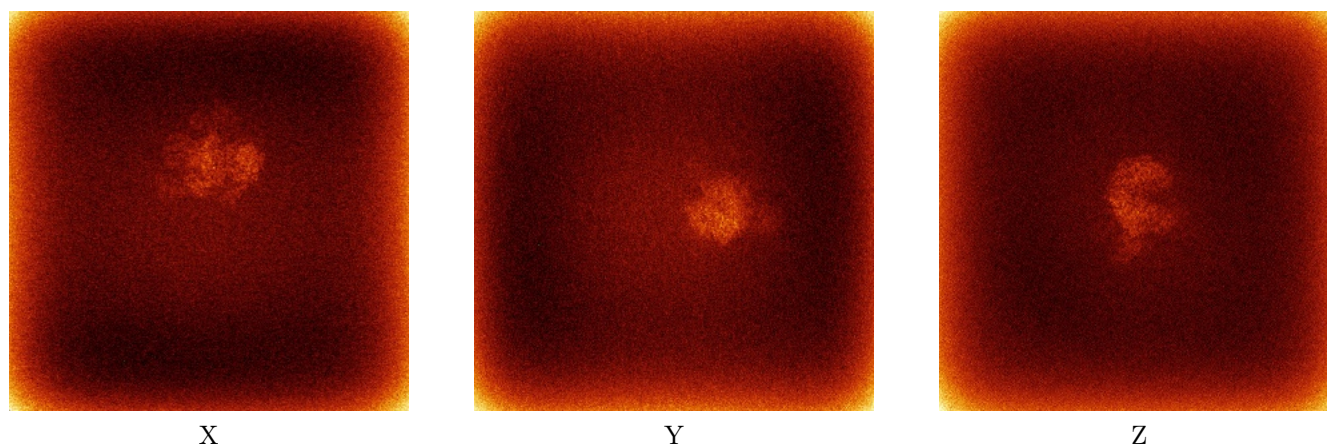
The images above show the largest variance slices of the map in three orthogonal directions.

6.4 Orthogonal standard-deviation projections (False-color) [i](#)

6.4.1 Primary map



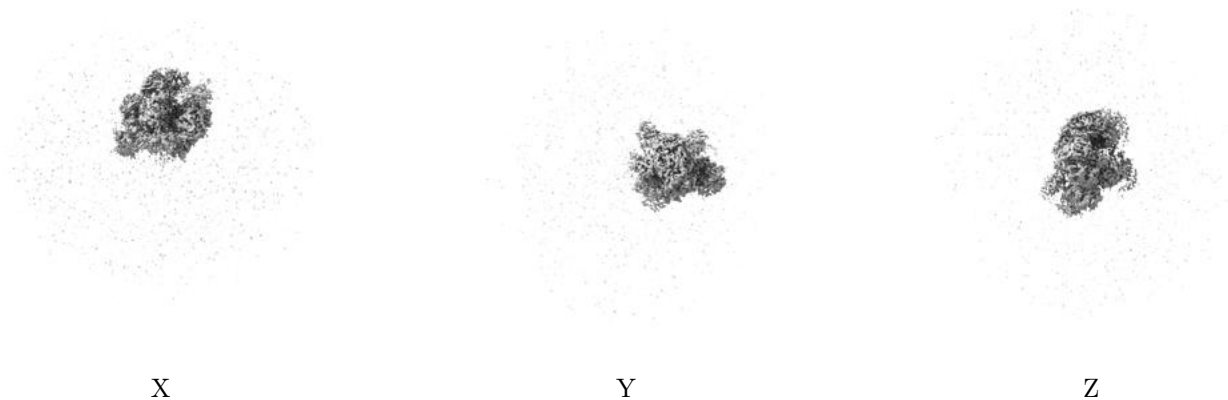
6.4.2 Raw map



The images above show the map standard deviation projections with false color in three orthogonal directions. Minimum values are shown in green, max in blue, and dark to light orange shades represent small to large values respectively.

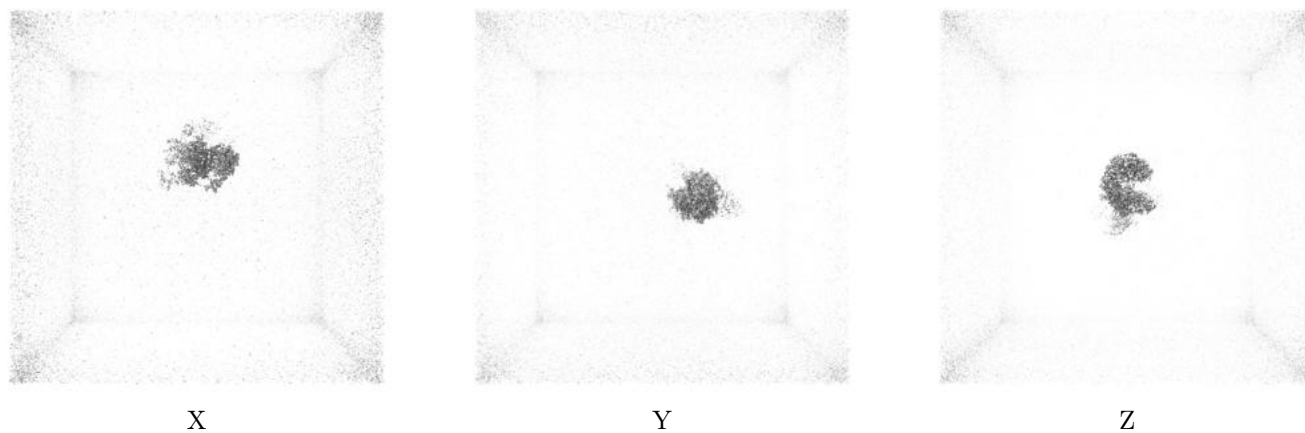
6.5 Orthogonal surface views [i](#)

6.5.1 Primary map



The images above show the 3D surface view of the map at the recommended contour level 0.4. These images, in conjunction with the slice images, may facilitate assessment of whether an appropriate contour level has been provided.

6.5.2 Raw map



These images show the 3D surface of the raw map. The raw map's contour level was selected so that its surface encloses the same volume as the primary map does at its recommended contour level.

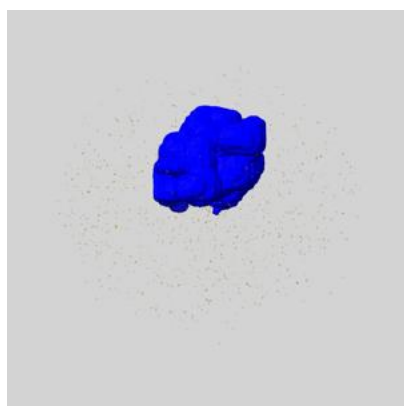
6.6 Mask visualisation [i](#)

This section shows the 3D surface view of the primary map at 50% transparency overlaid with the specified mask at 0% transparency

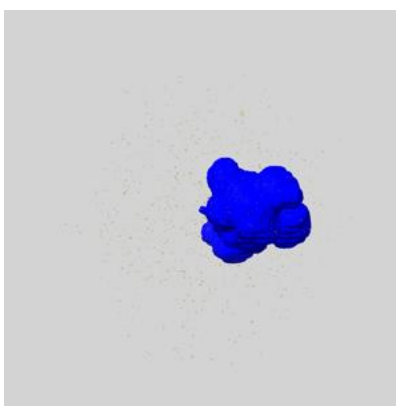
A mask typically either:

- Encompasses the whole structure
- Separates out a domain, a functional unit, a monomer or an area of interest from a larger structure

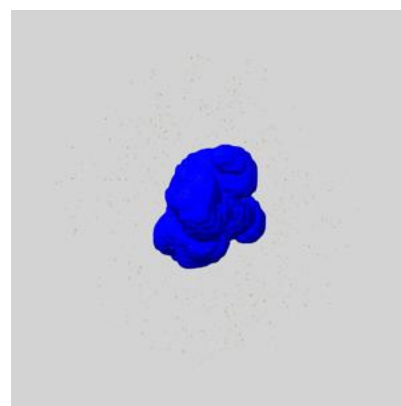
6.6.1 emd_19393_msk_1.map [i](#)



X



Y

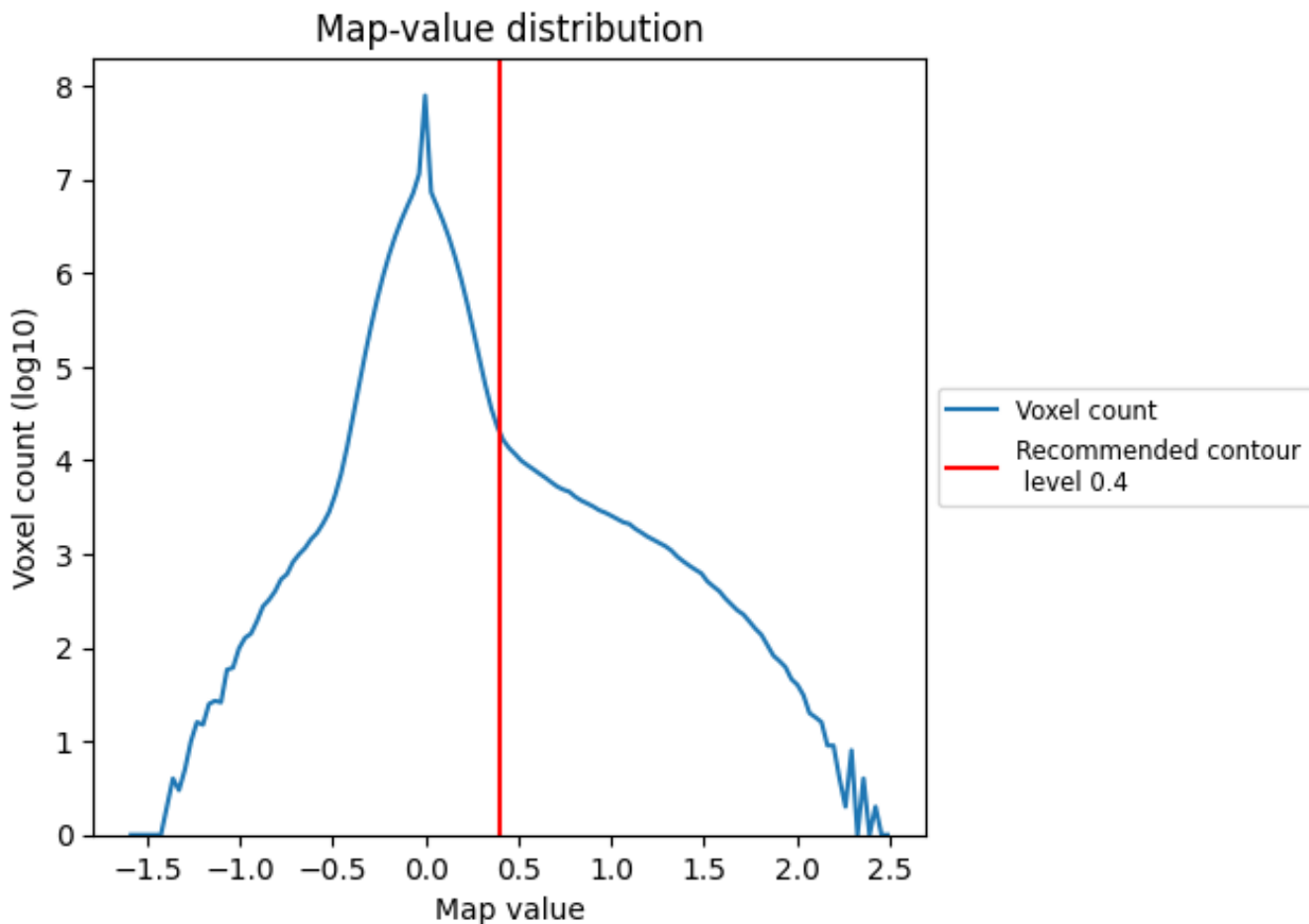


Z

7 Map analysis [i](#)

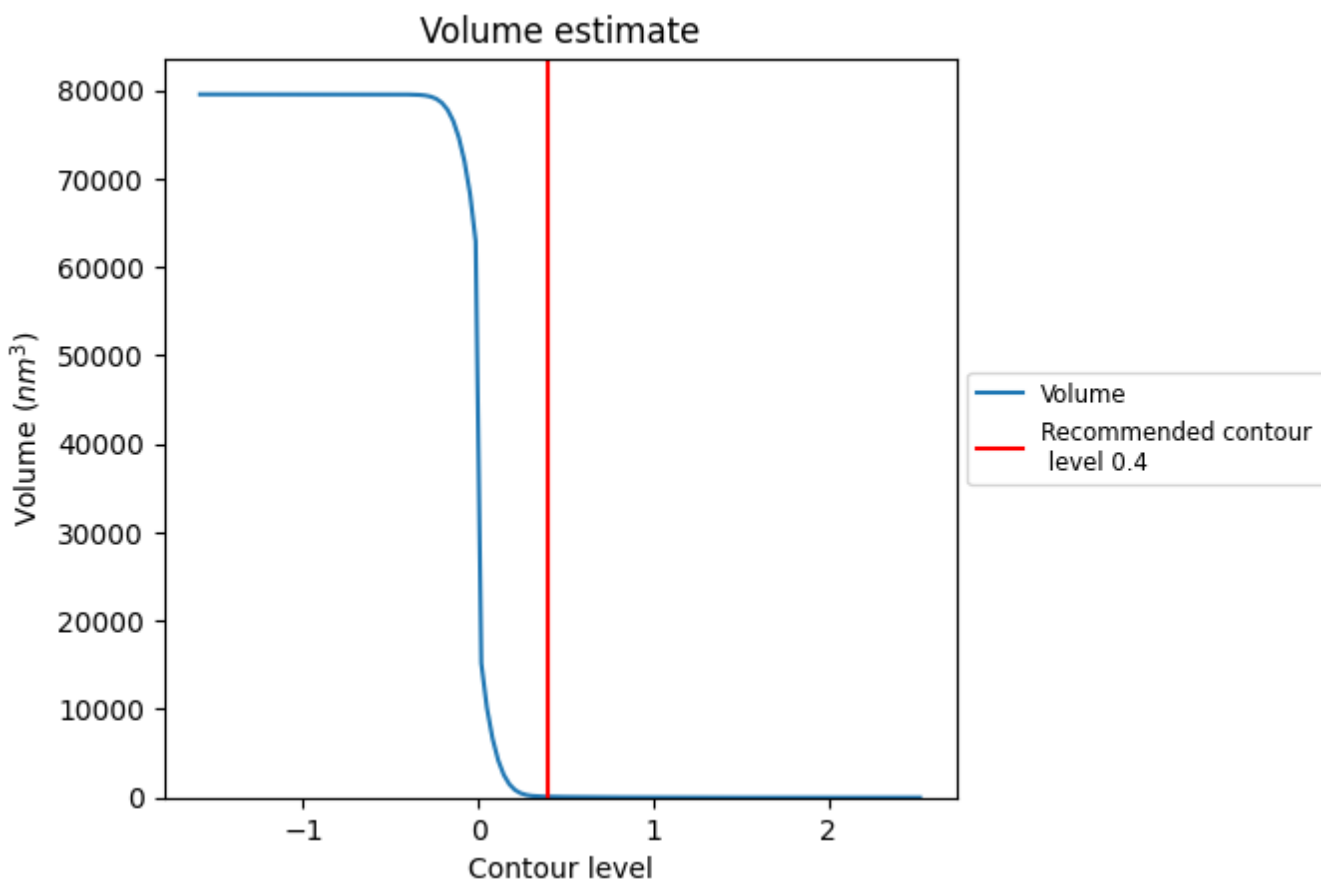
This section contains the results of statistical analysis of the map.

7.1 Map-value distribution [i](#)



The map-value distribution is plotted in 128 intervals along the x-axis. The y-axis is logarithmic. A spike in this graph at zero usually indicates that the volume has been masked.

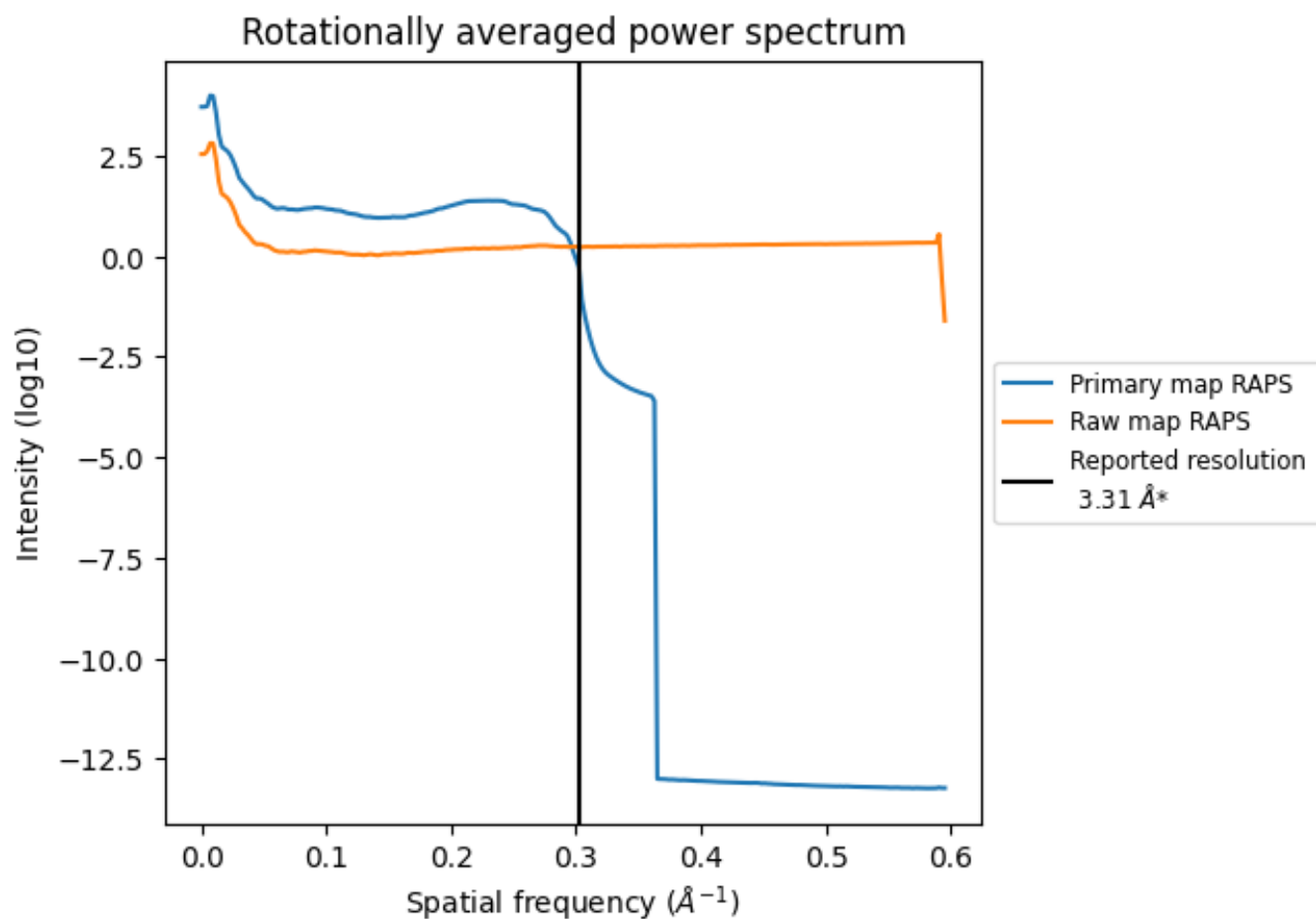
7.2 Volume estimate [i](#)



The volume at the recommended contour level is 96 nm³; this corresponds to an approximate mass of 87 kDa.

The volume estimate graph shows how the enclosed volume varies with the contour level. The recommended contour level is shown as a vertical line and the intersection between the line and the curve gives the volume of the enclosed surface at the given level.

7.3 Rotationally averaged power spectrum [i](#)

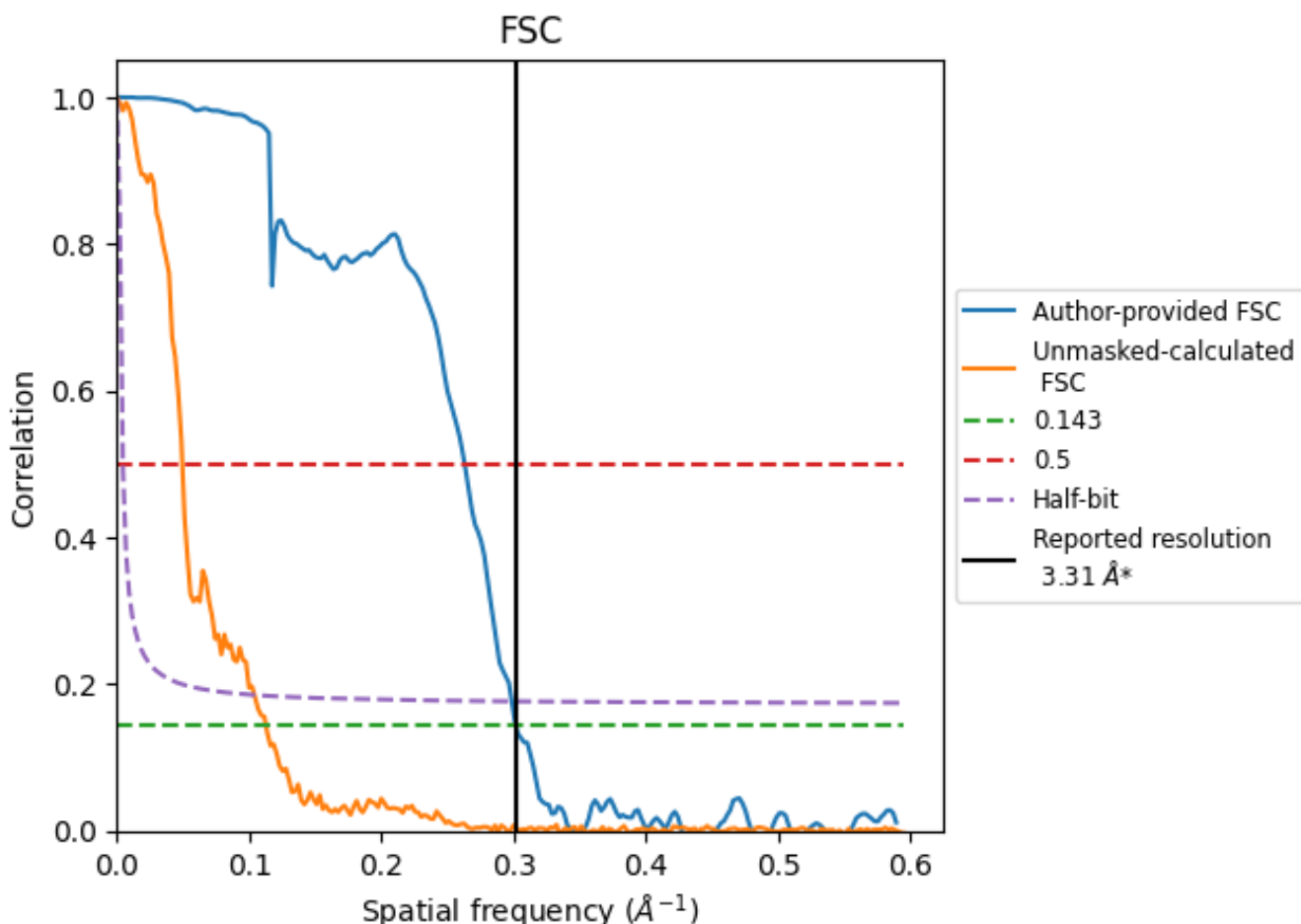


*Reported resolution corresponds to spatial frequency of 0.302 Å⁻¹

8 Fourier-Shell correlation [i](#)

Fourier-Shell Correlation (FSC) is the most commonly used method to estimate the resolution of single-particle and subtomogram-averaged maps. The shape of the curve depends on the imposed symmetry, mask and whether or not the two 3D reconstructions used were processed from a common reference. The reported resolution is shown as a black line. A curve is displayed for the half-bit criterion in addition to lines showing the 0.143 gold standard cut-off and 0.5 cut-off.

8.1 FSC [i](#)



*Reported resolution corresponds to spatial frequency of 0.302 Å⁻¹

8.2 Resolution estimates [i](#)

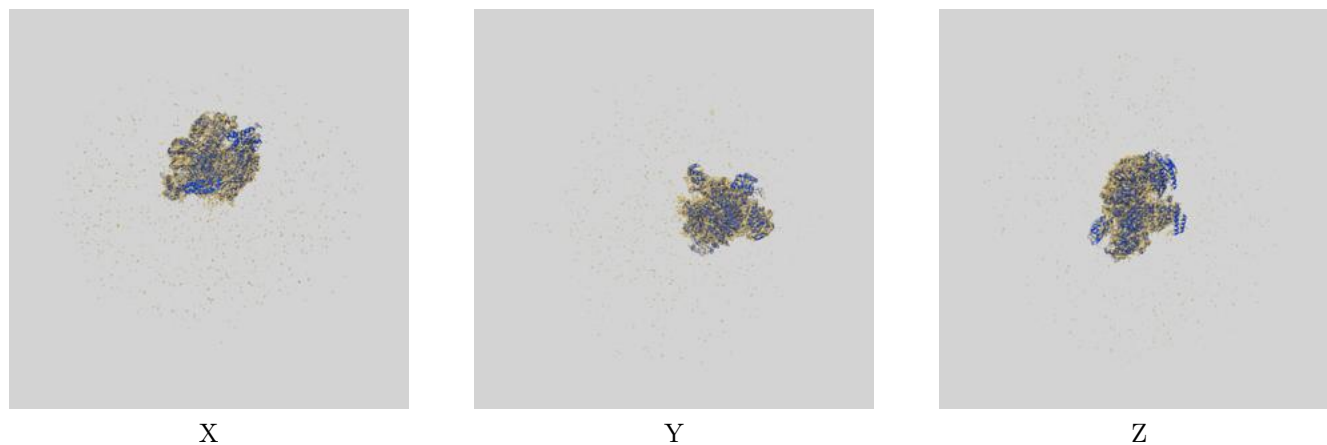
Resolution estimate (Å)	Estimation criterion (FSC cut-off)		
	0.143	0.5	Half-bit
Reported by author	3.31	-	-
Author-provided FSC curve	3.31	3.80	3.35
Unmasked-calculated*	8.86	20.16	9.61

*Resolution estimate based on FSC curve calculated by comparison of deposited half-maps. The value from deposited half-maps intersecting FSC 0.143 CUT-OFF 8.86 differs from the reported value 3.31 by more than 10 %

9 Map-model fit [i](#)

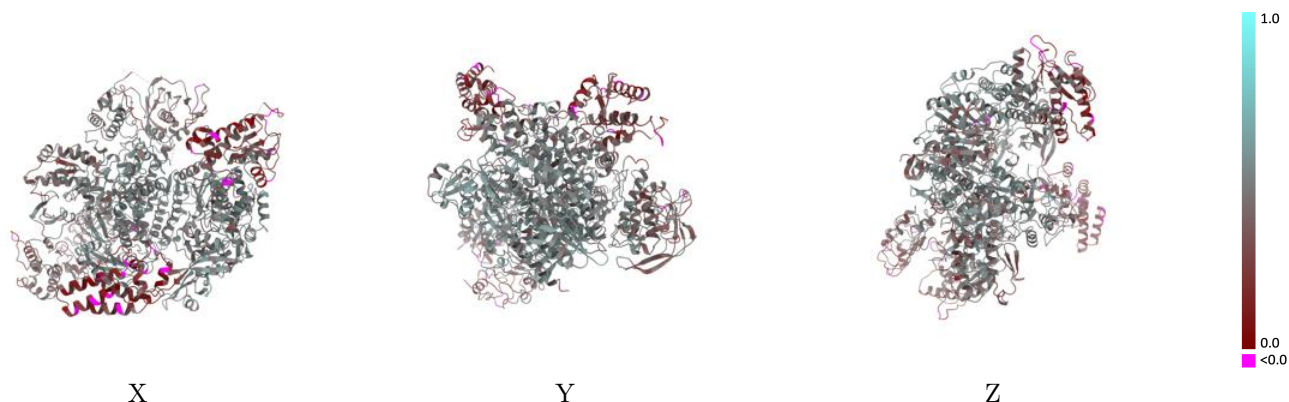
This section contains information regarding the fit between EMDB map EMD-19393 and PDB model 8RNB. Per-residue inclusion information can be found in section 3 on page 6.

9.1 Map-model overlay [i](#)



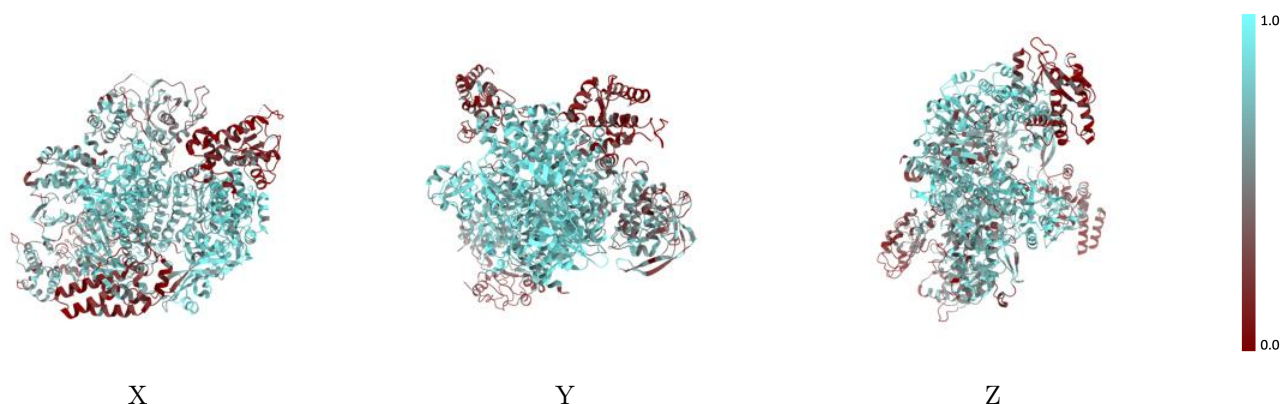
The images above show the 3D surface view of the map at the recommended contour level 0.4 at 50% transparency in yellow overlaid with a ribbon representation of the model coloured in blue. These images allow for the visual assessment of the quality of fit between the atomic model and the map.

9.2 Q-score mapped to coordinate model [i](#)



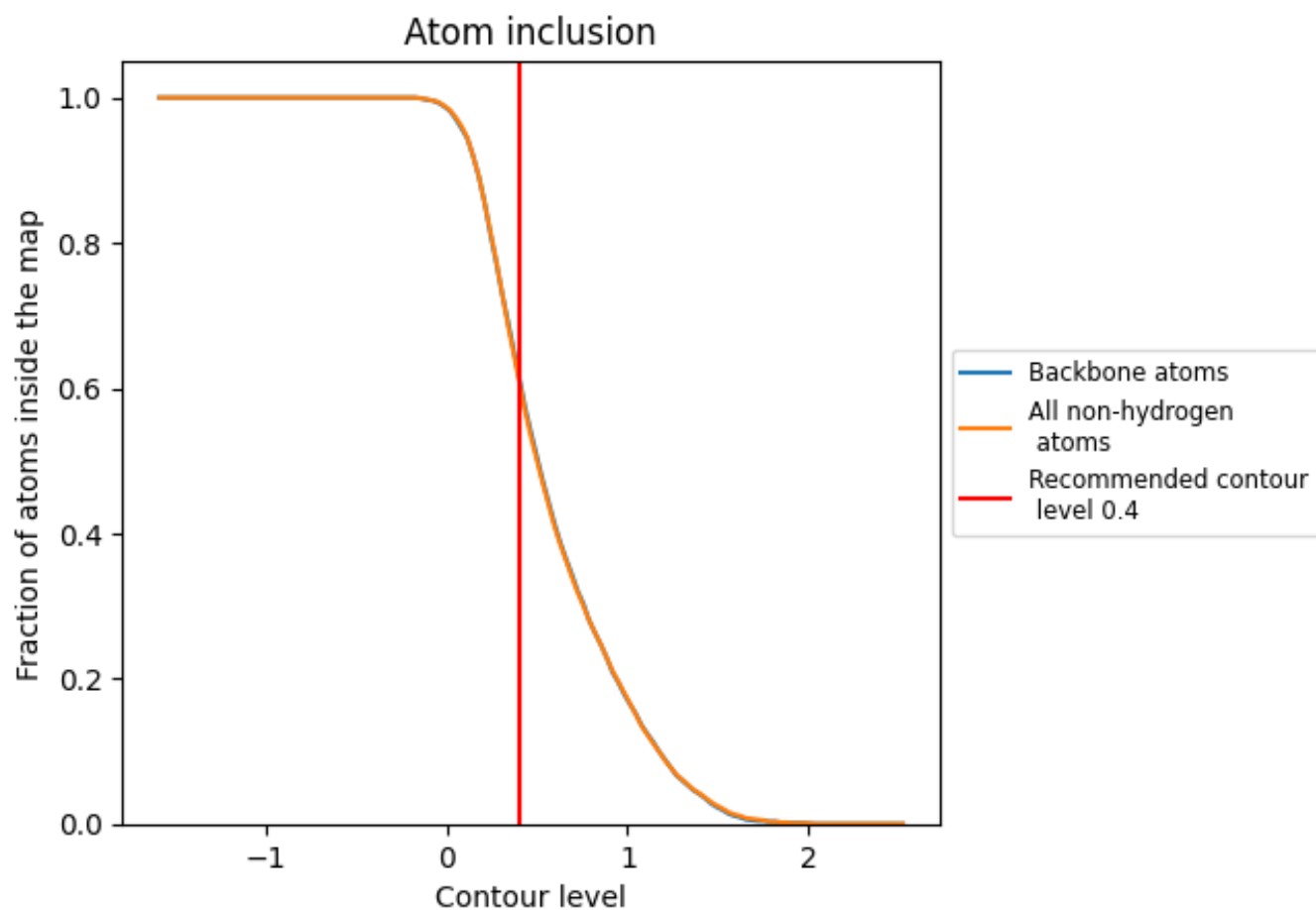
The images above show the model with each residue coloured according to its Q-score. This shows their resolvability in the map with higher Q-score values reflecting better resolvability. Please note: Q-score is calculating the resolvability of atoms, and thus high values are only expected at resolutions at which atoms can be resolved. Low Q-score values may therefore be expected for many entries.

9.3 Atom inclusion mapped to coordinate model [i](#)



The images above show the model with each residue coloured according to its atom inclusion. This shows to what extent they are inside the map at the recommended contour level (0.4).













9.4 Atom inclusion [i](#)



At the recommended contour level, 62% of all backbone atoms, 61% of all non-hydrogen atoms, are inside the map.

9.5 Map-model fit summary [i](#)

The table lists the average atom inclusion at the recommended contour level (0.4) and Q-score for the entire model and for each chain.

Chain	Atom inclusion	Q-score
All	 0.6110	 0.4290
C	 0.5160	 0.3460
D	 0.6420	 0.4500
E	 0.7290	 0.4590
F	 0.5830	 0.4160
G	 0.2220	 0.3240

