



# Full wwPDB X-ray Structure Validation Report ⓘ

Oct 7, 2024 – 12:05 pm BST

PDB ID : 8RNL  
Title : Unspecific peroxygenase from *Marasmius wettsteinii* (MweUPO-1) in complex with lauric acid  
Authors : Fernandez-Garcia, A.; Sanz-Aparicio, J.  
Deposited on : 2024-01-10  
Resolution : 1.60 Å (reported)

This is a Full wwPDB X-ray Structure Validation Report for a publicly released PDB entry.

We welcome your comments at [validation@mail.wwpdb.org](mailto:validation@mail.wwpdb.org)

A user guide is available at

<https://www.wwpdb.org/validation/2017/XrayValidationReportHelp>

with specific help available everywhere you see the ⓘ symbol.

The types of validation reports are described at

<http://www.wwpdb.org/validation/2017/FAQs#types>.

---

The following versions of software and data (see [references ⓘ](#)) were used in the production of this report:

MolProbity : 4.02b-467  
Mogul : 1.8.4, CSD as541be (2020)  
Xtriage (Phenix) : 1.13  
EDS : 3.0  
buster-report : 1.1.7 (2018)  
Percentile statistics : 20231227.v01 (using entries in the PDB archive December 27th 2023)  
CCP4 : 9.0.003 (Gargrove)  
Density-Fitness : 1.0.11  
Ideal geometry (proteins) : Engh & Huber (2001)  
Ideal geometry (DNA, RNA) : Parkinson et al. (1996)  
Validation Pipeline (wwPDB-VP) : 2.39

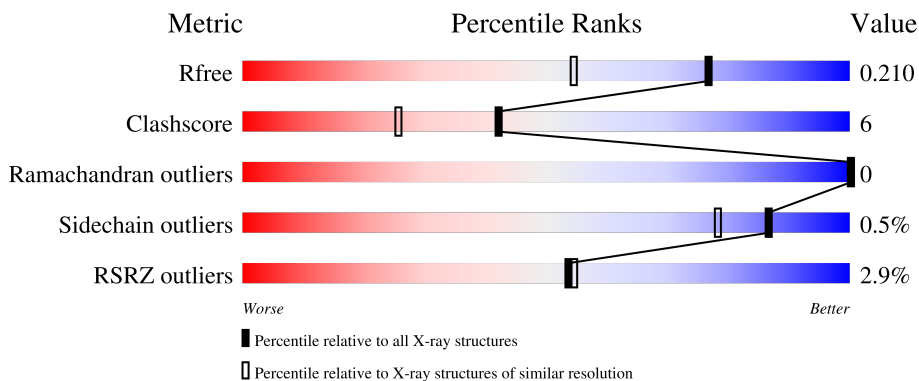
# 1 Overall quality at a glance

The following experimental techniques were used to determine the structure:

*X-RAY DIFFRACTION*

The reported resolution of this entry is 1.60 Å.

Percentile scores (ranging between 0-100) for global validation metrics of the entry are shown in the following graphic. The table shows the number of entries on which the scores are based.



Metric	Whole archive (#Entries)	Similar resolution (#Entries, resolution range(Å))
$R_{free}$	164625	4274 (1.60-1.60)
Clashscore	180529	4682 (1.60-1.60)
Ramachandran outliers	177936	4583 (1.60-1.60)
Sidechain outliers	177891	4582 (1.60-1.60)
RSRZ outliers	164620	4272 (1.60-1.60)

The table below summarises the geometric issues observed across the polymeric chains and their fit to the electron density. The red, orange, yellow and green segments of the lower bar indicate the fraction of residues that contain outliers for  $\geq 3$ , 2, 1 and 0 types of geometric quality criteria respectively. A grey segment represents the fraction of residues that are not modelled. The numeric value for each fraction is indicated below the corresponding segment, with a dot representing fractions  $\leq 5\%$ . The upper red bar (where present) indicates the fraction of residues that have poor fit to the electron density. The numeric value is given above the bar.

Mol	Chain	Length	Quality of chain
1	A	240	 2% 94% 6%
1	B	240	 3% 95% 5%

The following table lists non-polymeric compounds, carbohydrate monomers and non-standard residues in protein, DNA, RNA chains that are outliers for geometric or electron-density-fit criteria:

Mol	Type	Chain	Res	Chirality	Geometry	Clashes	Electron density
3	DAO	B	305	-	-	X	-
5	PEG	A	306	-	-	X	-
6	GOL	A	309	-	-	X	-

## 2 Entry composition [i](#)

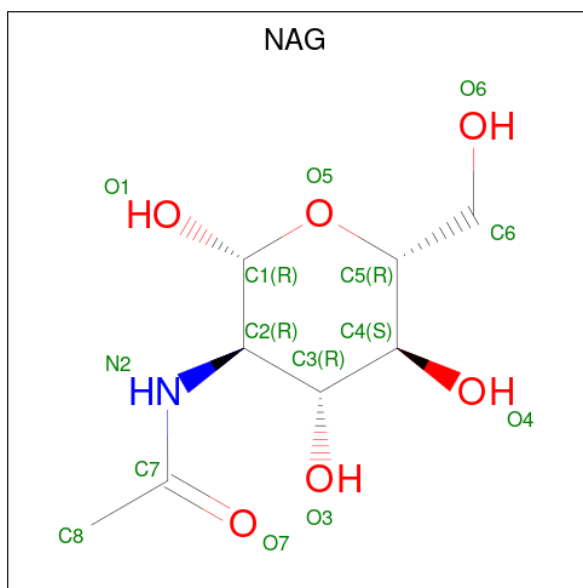
There are 9 unique types of molecules in this entry. The entry contains 4442 atoms, of which 0 are hydrogens and 0 are deuteriums.

In the tables below, the ZeroOcc column contains the number of atoms modelled with zero occupancy, the AltConf column contains the number of residues with at least one atom in alternate conformation and the Trace column contains the number of residues modelled with at most 2 atoms.

- Molecule 1 is a protein called Unspecific peroxygenase.

Mol	Chain	Residues	Atoms					ZeroOcc	AltConf	Trace
			Total	C	N	O	S			
1	A	240	Total	C	N	O	S	0	3	0
			1835	1150	324	355	6			
1	B	240	Total	C	N	O	S	0	2	0
			1827	1145	321	355	6			

- Molecule 2 is 2-acetamido-2-deoxy-beta-D-glucopyranose (three-letter code: NAG) (formula:  $C_8H_{15}NO_6$ ).



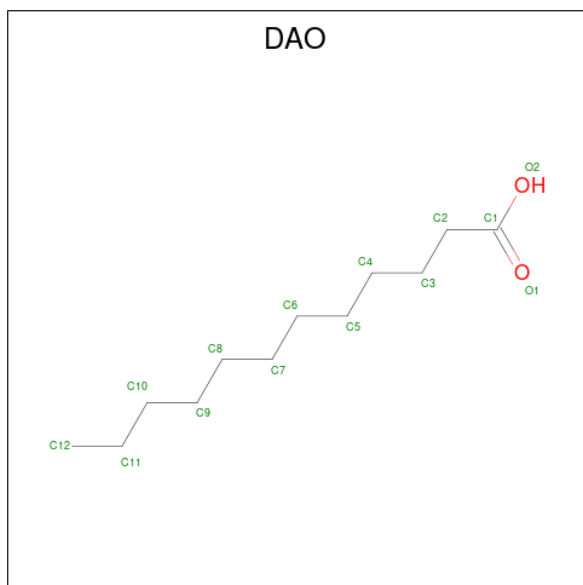
Mol	Chain	Residues	Atoms				ZeroOcc	AltConf
			Total	C	N	O		
2	A	1	Total	C	N	O	0	0
			14	8	1	5		
2	A	1	Total	C	N	O	0	0
			14	8	1	5		
2	A	1	Total	C	N	O	0	0
			14	8	1	5		
2	B	1	Total	C	N	O	0	0
			14	8	1	5		

*Continued on next page...*

Continued from previous page...

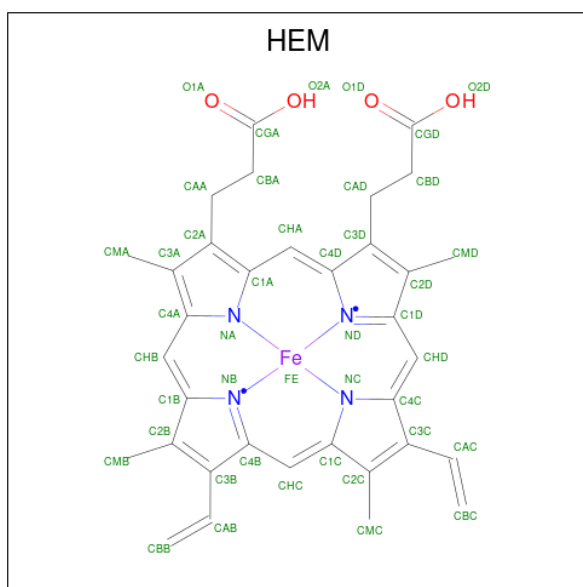
Mol	Chain	Residues	Atoms				ZeroOcc	AltConf
			Total	C	N	O		
2	B	1	14	8	1	5	0	0

- Molecule 3 is LAURIC ACID (three-letter code: DAO) (formula:  $C_{12}H_{24}O_2$ ) (labeled as "Ligand of Interest" by depositor).



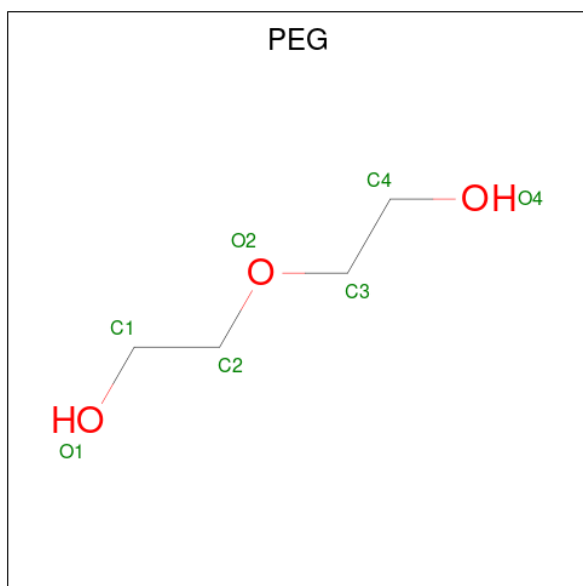
Mol	Chain	Residues	Atoms			ZeroOcc	AltConf
			Total	C	O		
3	A	1	14	12	2	0	0
3	B	1	14	12	2	0	0
3	B	1	14	12	2	0	0

- Molecule 4 is PROTOPORPHYRIN IX CONTAINING FE (three-letter code: HEM) (formula:  $C_{34}H_{32}FeN_4O_4$ ) (labeled as "Ligand of Interest" by depositor).



Mol	Chain	Residues	Atoms				ZeroOcc	AltConf	
4	A	1	Total	C	Fe	N	O	0	0
			43	34	1	4	4		
4	B	1	Total	C	Fe	N	O	0	0
			43	34	1	4	4		

- Molecule 5 is DI(HYDROXYETHYL)ETHER (three-letter code: PEG) (formula:  $C_4H_{10}O_3$ ).



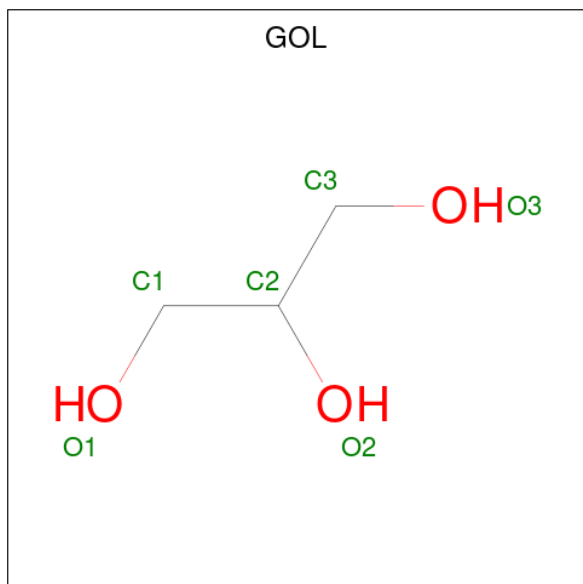
Mol	Chain	Residues	Atoms			ZeroOcc	AltConf
5	A	1	Total	C	O	0	0
			7	4	3		
5	A	1	Total	C	O	0	0
			7	4	3		

*Continued on next page...*

Continued from previous page...

Mol	Chain	Residues	Atoms			ZeroOcc	AltConf
5	A	1	Total	C	O	0	0
			7	4	3		

- Molecule 6 is GLYCEROL (three-letter code: GOL) (formula:  $C_3H_8O_3$ ).

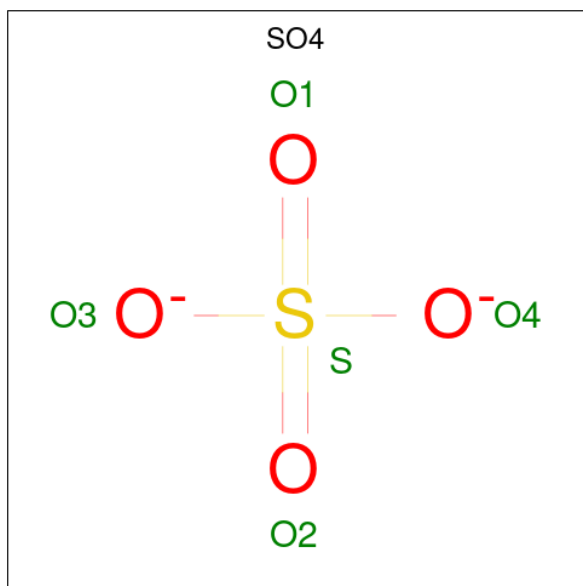


Mol	Chain	Residues	Atoms			ZeroOcc	AltConf
6	A	1	Total	C	O	0	0
			6	3	3		
6	A	1	Total	C	O	0	0
			6	3	3		
6	B	1	Total	C	O	0	0
			6	3	3		
6	B	1	Total	C	O	0	0
			6	3	3		
6	B	1	Total	C	O	0	0
			6	3	3		

- Molecule 7 is MAGNESIUM ION (three-letter code: MG) (formula: Mg) (labeled as "Ligand of Interest" by depositor).

Mol	Chain	Residues	Atoms		ZeroOcc	AltConf
7	A	1	Total	Mg	0	0
			1	1		
7	B	1	Total	Mg	0	0
			1	1		

- Molecule 8 is SULFATE ION (three-letter code: SO4) (formula: O<sub>4</sub>S).



Mol	Chain	Residues	Atoms	ZeroOcc	AltConf
8	A	1	Total O S 5 4 1	0	0
8	A	1	Total O S 5 4 1	0	0
8	A	1	Total O S 5 4 1	0	0
8	B	1	Total O S 5 4 1	0	0

- Molecule 9 is water.

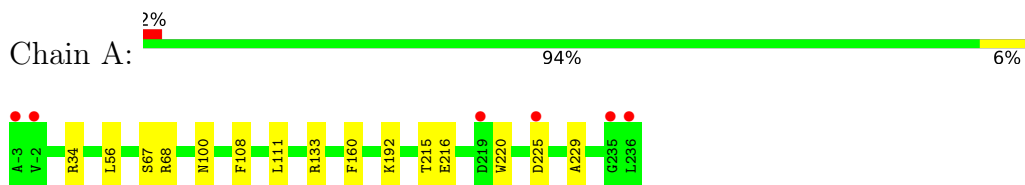
Mol	Chain	Residues	Atoms	ZeroOcc	AltConf
9	A	286	Total O 286 286	0	0
9	B	223	Total O 223 223	0	0



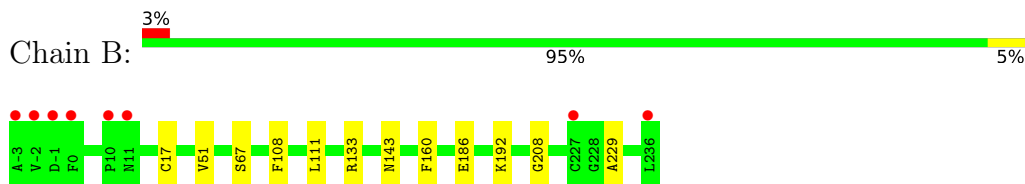
### 3 Residue-property plots [i](#)

These plots are drawn for all protein, RNA, DNA and oligosaccharide chains in the entry. The first graphic for a chain summarises the proportions of the various outlier classes displayed in the second graphic. The second graphic shows the sequence view annotated by issues in geometry and electron density. Residues are color-coded according to the number of geometric quality criteria for which they contain at least one outlier: green = 0, yellow = 1, orange = 2 and red = 3 or more. A red dot above a residue indicates a poor fit to the electron density ( $RSRZ > 2$ ). Stretches of 2 or more consecutive residues without any outlier are shown as a green connector. Residues present in the sample, but not in the model, are shown in grey.

- Molecule 1: Unspecific peroxygenase



- Molecule 1: Unspecific peroxygenase



## 4 Data and refinement statistics

Property	Value	Source
Space group	P 43 21 2	Depositor
Cell constants a, b, c, $\alpha$ , $\beta$ , $\gamma$	75.41Å 75.41Å 186.25Å 90.00° 90.00° 90.00°	Depositor
Resolution (Å)	47.98 – 1.60 47.98 – 1.60	Depositor EDS
% Data completeness (in resolution range)	99.9 (47.98-1.60) 99.9 (47.98-1.60)	Depositor EDS
$R_{merge}$	0.05	Depositor
$R_{sym}$	(Not available)	Depositor
$\langle I/\sigma(I) \rangle$ <sup>1</sup>	2.89 (at 1.60Å)	Xtrriage
Refinement program	REFMAC 5.8.0403	Depositor
R, $R_{free}$	0.170 , 0.197 0.184 , 0.210	Depositor DCC
$R_{free}$ test set	3472 reflections (4.84%)	wwPDB-VP
Wilson B-factor (Å <sup>2</sup> )	23.2	Xtrriage
Anisotropy	0.419	Xtrriage
Bulk solvent $k_{sol}$ (e/Å <sup>3</sup> ), $B_{sol}$ (Å <sup>2</sup> )	0.36 , 29.9	EDS
L-test for twinning <sup>2</sup>	$\langle  L  \rangle = 0.49$ , $\langle L^2 \rangle = 0.32$	Xtrriage
Estimated twinning fraction	No twinning to report.	Xtrriage
$F_o, F_c$ correlation	0.97	EDS
Total number of atoms	4442	wwPDB-VP
Average B, all atoms (Å <sup>2</sup> )	26.0	wwPDB-VP

Xtrriage's analysis on translational NCS is as follows: *The largest off-origin peak in the Patterson function is 4.55% of the height of the origin peak. No significant pseudotranslation is detected.*

<sup>1</sup>Intensities estimated from amplitudes.

<sup>2</sup>Theoretical values of  $\langle |L| \rangle$ ,  $\langle L^2 \rangle$  for acentric reflections are 0.5, 0.333 respectively for untwinned datasets, and 0.375, 0.2 for perfectly twinned datasets.

## 5 Model quality [i](#)

### 5.1 Standard geometry [i](#)

Bond lengths and bond angles in the following residue types are not validated in this section: MG, GOL, HEM, DAO, PEG, SO4, NAG

The Z score for a bond length (or angle) is the number of standard deviations the observed value is removed from the expected value. A bond length (or angle) with  $|Z| > 5$  is considered an outlier worth inspection. RMSZ is the root-mean-square of all Z scores of the bond lengths (or angles).

Mol	Chain	Bond lengths		Bond angles	
		RMSZ	# Z  >5	RMSZ	# Z  >5
1	A	0.35	0/1884	0.63	0/2565
1	B	0.33	0/1873	0.59	0/2551
All	All	0.34	0/3757	0.61	0/5116

Chiral center outliers are detected by calculating the chiral volume of a chiral center and verifying if the center is modelled as a planar moiety or with the opposite hand. A planarity outlier is detected by checking planarity of atoms in a peptide group, atoms in a mainchain group or atoms of a sidechain that are expected to be planar.

Mol	Chain	#Chirality outliers	#Planarity outliers
1	A	0	1
1	B	0	1
All	All	0	2

There are no bond length outliers.

There are no bond angle outliers.

There are no chirality outliers.

All (2) planarity outliers are listed below:

Mol	Chain	Res	Type	Group
1	A	133	ARG	Sidechain
1	B	133	ARG	Sidechain

### 5.2 Too-close contacts [i](#)

In the following table, the Non-H and H(model) columns list the number of non-hydrogen atoms and hydrogen atoms in the chain respectively. The H(added) column lists the number of hydrogen atoms added and optimized by MolProbity. The Clashes column lists the number of clashes within the asymmetric unit, whereas Symm-Clashes lists symmetry-related clashes.

Mol	Chain	Non-H	H(model)	H(added)	Clashes	Symm-Clashes
1	A	1835	0	1811	25	0
1	B	1827	0	1799	13	0
2	A	42	0	39	0	0
2	B	28	0	26	0	0
3	A	14	0	23	0	0
3	B	28	0	46	8	0
4	A	43	0	30	2	0
4	B	43	0	30	5	0
5	A	21	0	30	12	0
6	A	12	0	16	7	0
6	B	18	0	24	4	0
7	A	1	0	0	0	0
7	B	1	0	0	0	0
8	A	15	0	0	1	0
8	B	5	0	0	0	0
9	A	286	0	0	4	0
9	B	223	0	0	1	0
All	All	4442	0	3874	48	0

The all-atom clashscore is defined as the number of clashes found per 1000 atoms (including hydrogen atoms). The all-atom clashscore for this structure is 6.

All (48) close contacts within the same asymmetric unit are listed below, sorted by their clash magnitude.

Atom-1	Atom-2	Interatomic distance (Å)	Clash overlap (Å)
1:A:68:ARG:HB2	6:A:309:GOL:H32	1.49	0.93
1:A:192:LYS:HZ1	5:A:306:PEG:C3	1.88	0.87
1:A:100:ASN:OD1	6:A:307:GOL:H2	1.76	0.84
1:A:216:GLU:HA	5:A:308:PEG:H12	1.65	0.78
1:A:68:ARG:HH11	6:A:309:GOL:H11	1.52	0.75
1:B:67:SER:HA	6:B:307:GOL:H11	1.70	0.71
1:B:186:GLU:OE2	6:B:308:GOL:H31	1.90	0.71
1:B:67:SER:HB2	6:B:307:GOL:H2	1.73	0.70
4:A:305:HEM:HHD	4:A:305:HEM:HBC2	1.73	0.69
1:A:215:THR:HG22	5:A:308:PEG:H32	1.78	0.66
1:A:192:LYS:HZ1	5:A:306:PEG:H32	1.61	0.66
1:A:34[A]:ARG:NH1	8:A:312:SO4:O1	2.30	0.64
5:A:306:PEG:H42	9:A:544:HOH:O	1.99	0.63
1:B:143:ASN:ND2	9:B:401:HOH:O	2.31	0.61
1:A:192:LYS:HZ1	5:A:306:PEG:C2	2.15	0.60
3:B:304:DAO:H122	3:B:305:DAO:H91	1.84	0.59
1:A:108:PHE:CE1	1:A:111:LEU:HD23	2.37	0.59

*Continued on next page...*

Continued from previous page...

Atom-1	Atom-2	Interatomic distance (Å)	Clash overlap (Å)
1:B:108:PHE:CE1	1:B:111:LEU:HD23	2.37	0.59
1:A:68:ARG:NH1	6:A:309:GOL:H11	2.19	0.56
1:A:225:ASP:HB2	9:A:618:HOH:O	2.06	0.54
4:B:303:HEM:HBB2	4:B:303:HEM:HMB2	1.88	0.54
1:B:108:PHE:HE1	1:B:111:LEU:HD23	1.74	0.52
1:A:192:LYS:HZ1	5:A:306:PEG:H31	1.72	0.52
1:A:192:LYS:NZ	5:A:306:PEG:H32	2.26	0.50
4:B:303:HEM:HBB2	4:B:303:HEM:CMB	2.42	0.50
1:A:108:PHE:HE1	1:A:111:LEU:HD23	1.75	0.49
3:B:304:DAO:C4	3:B:305:DAO:H121	2.42	0.49
1:B:208:GLY:HA2	3:B:305:DAO:C5	2.43	0.49
1:A:229:ALA:HA	1:B:229:ALA:HA	1.94	0.48
3:B:304:DAO:H42	3:B:305:DAO:H121	1.95	0.48
1:A:68:ARG:NH1	9:A:401:HOH:O	2.26	0.47
1:A:225:ASP:CB	9:A:618:HOH:O	2.63	0.47
1:A:192:LYS:HZ1	5:A:306:PEG:H21	1.79	0.47
1:A:68:ARG:CB	6:A:309:GOL:H32	2.32	0.46
1:A:67:SER:HA	6:A:309:GOL:O2	2.16	0.45
1:B:51:VAL:HG21	4:B:303:HEM:CBB	2.47	0.45
3:B:304:DAO:C12	3:B:305:DAO:H91	2.46	0.44
1:B:192:LYS:NZ	6:B:308:GOL:O1	2.47	0.44
1:B:51:VAL:HG21	4:B:303:HEM:HBB1	1.99	0.44
5:A:310:PEG:H32	5:A:310:PEG:H11	1.83	0.42
3:B:304:DAO:H102	3:B:305:DAO:H112	2.01	0.42
1:A:192:LYS:NZ	5:A:306:PEG:C2	2.82	0.42
1:A:220:TRP:N	5:A:308:PEG:H22	2.35	0.42
3:B:304:DAO:H122	3:B:305:DAO:C9	2.50	0.42
1:A:68:ARG:HB2	6:A:309:GOL:C3	2.35	0.41
1:A:56:LEU:CD2	4:A:305:HEM:CBB	2.98	0.41
1:B:208:GLY:HA2	3:B:305:DAO:H52	2.03	0.40
1:B:17:CYS:HB2	4:B:303:HEM:C1D	2.56	0.40

There are no symmetry-related clashes.

## 5.3 Torsion angles

### 5.3.1 Protein backbone

In the following table, the Percentiles column shows the percent Ramachandran outliers of the chain as a percentile score with respect to all X-ray entries followed by that with respect to entries of similar resolution.

The Analysed column shows the number of residues for which the backbone conformation was analysed, and the total number of residues.

Mol	Chain	Analysed	Favoured	Allowed	Outliers	Percentiles	
1	A	241/240 (100%)	238 (99%)	3 (1%)	0	100	100
1	B	240/240 (100%)	237 (99%)	3 (1%)	0	100	100
All	All	481/480 (100%)	475 (99%)	6 (1%)	0	100	100

There are no Ramachandran outliers to report.

### 5.3.2 Protein sidechains [i](#)

In the following table, the Percentiles column shows the percent sidechain outliers of the chain as a percentile score with respect to all X-ray entries followed by that with respect to entries of similar resolution.

The Analysed column shows the number of residues for which the sidechain conformation was analysed, and the total number of residues.

Mol	Chain	Analysed	Rotameric	Outliers	Percentiles	
1	A	202/199 (102%)	201 (100%)	1 (0%)	86	78
1	B	201/199 (101%)	200 (100%)	1 (0%)	86	78
All	All	403/398 (101%)	401 (100%)	2 (0%)	86	78

All (2) residues with a non-rotameric sidechain are listed below:

Mol	Chain	Res	Type
1	A	160	PHE
1	B	160	PHE

Sometimes sidechains can be flipped to improve hydrogen bonding and reduce clashes. There are no such sidechains identified.

### 5.3.3 RNA [i](#)

There are no RNA molecules in this entry.

## 5.4 Non-standard residues in protein, DNA, RNA chains [i](#)

There are no non-standard protein/DNA/RNA residues in this entry.

## 5.5 Carbohydrates [i](#)

There are no oligosaccharides in this entry.

## 5.6 Ligand geometry [i](#)

Of 24 ligands modelled in this entry, 2 are monoatomic - leaving 22 for Mogul analysis.

In the following table, the Counts columns list the number of bonds (or angles) for which Mogul statistics could be retrieved, the number of bonds (or angles) that are observed in the model and the number of bonds (or angles) that are defined in the Chemical Component Dictionary. The Link column lists molecule types, if any, to which the group is linked. The Z score for a bond length (or angle) is the number of standard deviations the observed value is removed from the expected value. A bond length (or angle) with  $|Z| > 2$  is considered an outlier worth inspection. RMSZ is the root-mean-square of all Z scores of the bond lengths (or angles).

Mol	Type	Chain	Res	Link	Bond lengths			Bond angles		
					Counts	RMSZ	# Z  > 2	Counts	RMSZ	# Z  > 2
4	HEM	A	305	1,7,3	41,50,50	1.34	4 (9%)	45,82,82	1.83	14 (31%)
4	HEM	B	303	1,7,3	41,50,50	1.23	4 (9%)	45,82,82	1.76	11 (24%)
3	DAO	B	305	-	13,13,13	0.61	0	13,13,13	0.55	0
6	GOL	B	306	-	5,5,5	0.15	0	5,5,5	0.41	0
6	GOL	B	307	-	5,5,5	0.16	0	5,5,5	0.49	0
2	NAG	B	302	1	14,14,15	0.56	0	17,19,21	1.81	2 (11%)
2	NAG	A	301	1	14,14,15	0.43	0	17,19,21	0.68	1 (5%)
3	DAO	A	304	4	13,13,13	0.88	2 (15%)	13,13,13	0.37	0
5	PEG	A	306	-	6,6,6	0.26	0	5,5,5	0.23	0
6	GOL	A	309	-	5,5,5	0.32	0	5,5,5	0.55	0
2	NAG	B	301	1	14,14,15	0.42	0	17,19,21	0.77	1 (5%)
8	SO4	B	310	-	4,4,4	0.23	0	6,6,6	0.11	0
5	PEG	A	308	-	6,6,6	0.31	0	5,5,5	0.27	0
8	SO4	A	312	-	4,4,4	0.31	0	6,6,6	0.11	0
3	DAO	B	304	4	13,13,13	0.80	0	13,13,13	0.43	0
8	SO4	A	313	-	4,4,4	0.21	0	6,6,6	0.07	0
2	NAG	A	302	1	14,14,15	0.48	0	17,19,21	0.58	0
5	PEG	A	310	-	6,6,6	0.27	0	5,5,5	0.29	0
2	NAG	A	303	1	14,14,15	0.35	0	17,19,21	0.52	0
6	GOL	B	308	-	5,5,5	0.16	0	5,5,5	0.34	0
8	SO4	A	314	-	4,4,4	0.21	0	6,6,6	0.11	0
6	GOL	A	307	-	5,5,5	0.21	0	5,5,5	0.50	0

In the following table, the Chirals column lists the number of chiral outliers, the number of chiral centers analysed, the number of these observed in the model and the number defined in the Chemical Component Dictionary. Similar counts are reported in the Torsion and Rings columns.

'-' means no outliers of that kind were identified.

Mol	Type	Chain	Res	Link	Chirals	Torsions	Rings
2	NAG	A	302	1	-	0/6/23/26	0/1/1/1
4	HEM	A	305	1,7,3	-	4/12/54/54	-
4	HEM	B	303	1,7,3	-	2/12/54/54	-
3	DAO	B	305	-	-	8/11/11/11	-
5	PEG	A	310	-	-	3/4/4/4	-
6	GOL	B	306	-	-	1/4/4/4	-
2	NAG	A	303	1	-	2/6/23/26	0/1/1/1
2	NAG	B	302	1	-	3/6/23/26	0/1/1/1
3	DAO	A	304	4	-	7/11/11/11	-
6	GOL	B	307	-	-	4/4/4/4	-
5	PEG	A	306	-	-	2/4/4/4	-
3	DAO	B	304	4	-	9/11/11/11	-
6	GOL	A	309	-	-	3/4/4/4	-
2	NAG	B	301	1	-	0/6/23/26	0/1/1/1
6	GOL	B	308	-	-	1/4/4/4	-
5	PEG	A	308	-	-	2/4/4/4	-
6	GOL	A	307	-	-	4/4/4/4	-
2	NAG	A	301	1	-	0/6/23/26	0/1/1/1

All (10) bond length outliers are listed below:

Mol	Chain	Res	Type	Atoms	Z	Observed(Å)	Ideal(Å)
4	A	305	HEM	C1B-NB	-4.15	1.33	1.40
4	B	303	HEM	C1B-NB	-3.70	1.33	1.40
4	B	303	HEM	C4B-NB	-2.71	1.33	1.38
4	A	305	HEM	C1D-C2D	2.42	1.49	1.44
4	A	305	HEM	C4D-ND	-2.37	1.36	1.40
4	B	303	HEM	FE-NB	2.34	2.08	1.96
4	A	305	HEM	FE-NB	2.33	2.08	1.96
3	A	304	DAO	O2-C1	-2.13	1.23	1.30
4	B	303	HEM	C4D-ND	-2.07	1.36	1.40
3	A	304	DAO	O1-C1	2.01	1.28	1.22

All (29) bond angle outliers are listed below:

Mol	Chain	Res	Type	Atoms	Z	Observed(°)	Ideal(°)
2	B	302	NAG	O5-C1-C2	-4.80	103.70	111.29
2	B	302	NAG	C1-C2-N2	4.47	118.12	110.49

*Continued on next page...*



Continued from previous page...

Mol	Chain	Res	Type	Atoms	Z	Observed(°)	Ideal(°)
4	A	305	HEM	C1B-NB-C4B	3.63	108.82	105.07
4	A	305	HEM	C2D-C1D-ND	3.47	114.04	109.88
4	A	305	HEM	C1D-C2D-C3D	-3.41	103.37	106.96
4	B	303	HEM	C2D-C1D-ND	3.40	113.95	109.88
4	B	303	HEM	CHD-C1D-C2D	-3.36	119.73	124.98
4	A	305	HEM	C3C-C4C-NC	-3.13	105.03	110.94
4	B	303	HEM	C1D-C2D-C3D	-3.12	103.68	106.96
4	A	305	HEM	C3D-C4D-ND	3.10	113.62	110.17
4	B	303	HEM	C3D-C4D-ND	3.06	113.58	110.17
4	A	305	HEM	C2C-C3C-C4C	3.03	109.02	106.90
4	B	303	HEM	O2A-CGA-CBA	2.94	123.49	114.03
4	B	303	HEM	C4D-ND-C1D	-2.94	102.03	105.07
4	A	305	HEM	CHC-C4B-NB	2.84	127.52	124.43
4	B	303	HEM	CHC-C4B-NB	2.78	127.45	124.43
4	A	305	HEM	C4B-CHC-C1C	2.71	126.13	122.56
4	B	303	HEM	CMD-C2D-C1D	2.67	129.11	125.04
4	B	303	HEM	C1B-NB-C4B	2.62	107.78	105.07
4	A	305	HEM	C4D-ND-C1D	-2.39	102.61	105.07
4	B	303	HEM	CAD-CBD-CGD	-2.34	108.56	113.60
4	B	303	HEM	C4A-C3A-C2A	2.31	108.60	107.00
4	A	305	HEM	O2A-CGA-CBA	2.27	121.32	114.03
4	A	305	HEM	CBB-CAB-C3B	-2.18	116.77	127.62
4	A	305	HEM	CHD-C1D-C2D	-2.17	121.58	124.98
2	B	301	NAG	O5-C1-C2	-2.14	107.91	111.29
4	A	305	HEM	C4C-CHD-C1D	2.12	125.35	122.56
4	A	305	HEM	CMB-C2B-C1B	2.10	128.24	125.04
2	A	301	NAG	C1-C2-N2	2.03	113.95	110.49

There are no chirality outliers.

All (55) torsion outliers are listed below:

Mol	Chain	Res	Type	Atoms
2	B	302	NAG	C1-C2-N2-C7
6	A	307	GOL	O1-C1-C2-O2
6	A	307	GOL	O1-C1-C2-C3
6	A	307	GOL	C1-C2-C3-O3
6	A	309	GOL	C1-C2-C3-O3
6	B	307	GOL	C1-C2-C3-O3
6	B	307	GOL	O2-C2-C3-O3
5	A	310	PEG	C1-C2-O2-C3
5	A	306	PEG	O1-C1-C2-O2
3	B	305	DAO	C11-C10-C9-C8

Continued on next page...

*Continued from previous page...*

Mol	Chain	Res	Type	Atoms
5	A	308	PEG	C1-C2-O2-C3
2	B	302	NAG	C8-C7-N2-C2
5	A	310	PEG	O1-C1-C2-O2
2	B	302	NAG	O7-C7-N2-C2
5	A	308	PEG	O1-C1-C2-O2
3	B	304	DAO	C3-C4-C5-C6
3	A	304	DAO	C4-C5-C6-C7
6	B	307	GOL	O1-C1-C2-C3
3	B	305	DAO	C4-C5-C6-C7
3	A	304	DAO	C3-C4-C5-C6
6	A	307	GOL	O2-C2-C3-O3
6	A	309	GOL	O2-C2-C3-O3
2	A	303	NAG	C8-C7-N2-C2
3	B	305	DAO	C2-C3-C4-C5
4	A	305	HEM	C2B-C3B-CAB-CBB
3	B	304	DAO	C9-C10-C11-C12
6	B	307	GOL	O1-C1-C2-O2
3	B	304	DAO	C5-C6-C7-C8
3	B	304	DAO	C6-C7-C8-C9
3	B	304	DAO	C4-C5-C6-C7
2	A	303	NAG	O7-C7-N2-C2
3	B	305	DAO	C6-C7-C8-C9
5	A	310	PEG	O2-C3-C4-O4
3	B	305	DAO	C9-C10-C11-C12
3	B	304	DAO	C1-C2-C3-C4
3	B	304	DAO	C7-C8-C9-C10
6	B	306	GOL	O1-C1-C2-C3
4	A	305	HEM	CAA-CBA-CGA-O2A
3	B	304	DAO	O1-C1-C2-C3
3	B	305	DAO	O2-C1-C2-C3
5	A	306	PEG	C1-C2-O2-C3
3	B	304	DAO	O2-C1-C2-C3
3	A	304	DAO	C2-C3-C4-C5
3	B	305	DAO	O1-C1-C2-C3
4	A	305	HEM	CAA-CBA-CGA-O1A
3	A	304	DAO	O1-C1-C2-C3
3	B	305	DAO	C3-C4-C5-C6
4	B	303	HEM	CAD-CBD-CGD-O1D
4	B	303	HEM	CAD-CBD-CGD-O2D
3	A	304	DAO	O2-C1-C2-C3
3	A	304	DAO	C1-C2-C3-C4
6	A	309	GOL	O1-C1-C2-C3

*Continued on next page...*

*Continued from previous page...*

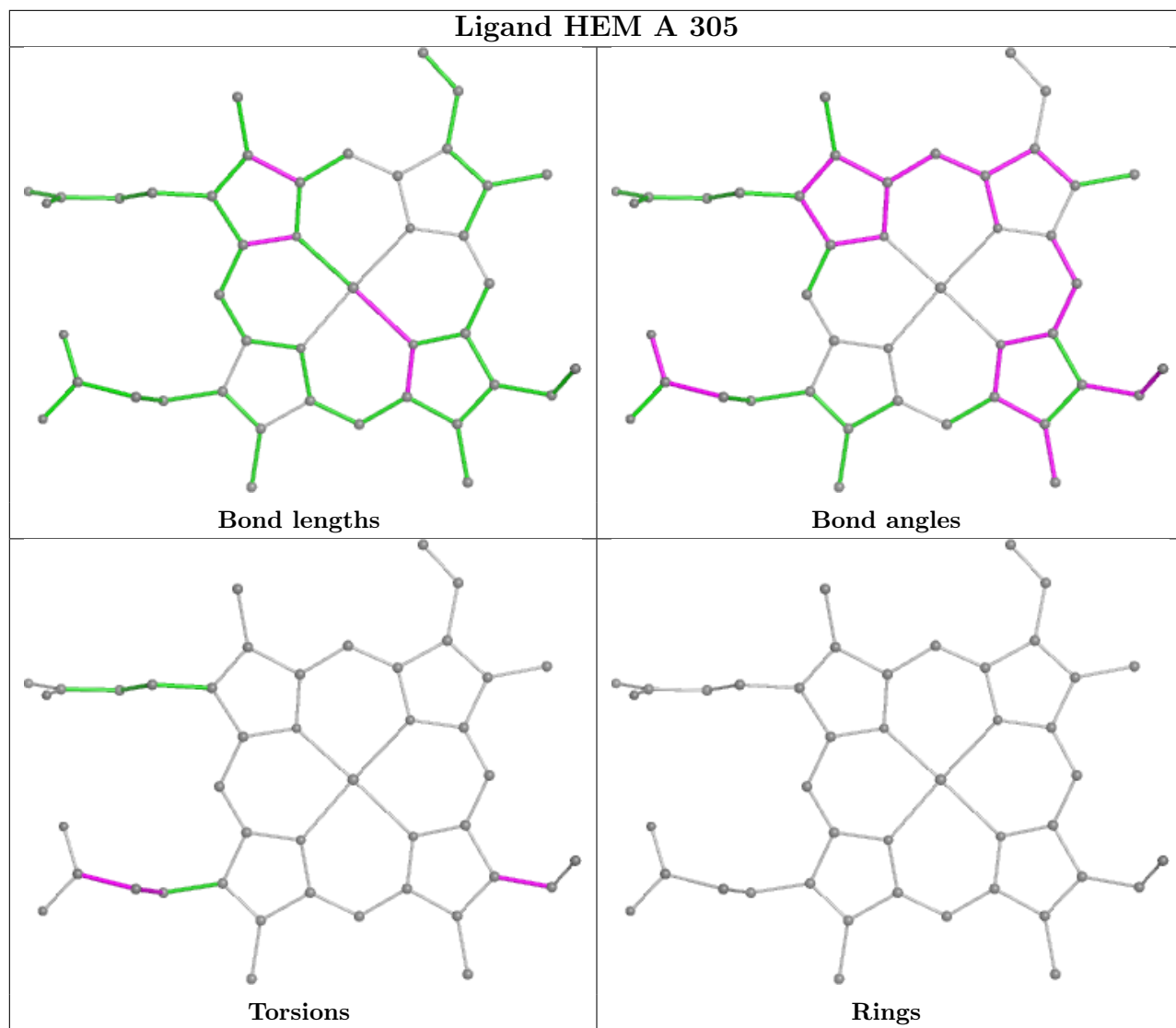
Mol	Chain	Res	Type	Atoms
6	B	308	GOL	O1-C1-C2-C3
3	A	304	DAO	C5-C6-C7-C8
4	A	305	HEM	C2A-CAA-CBA-CGA

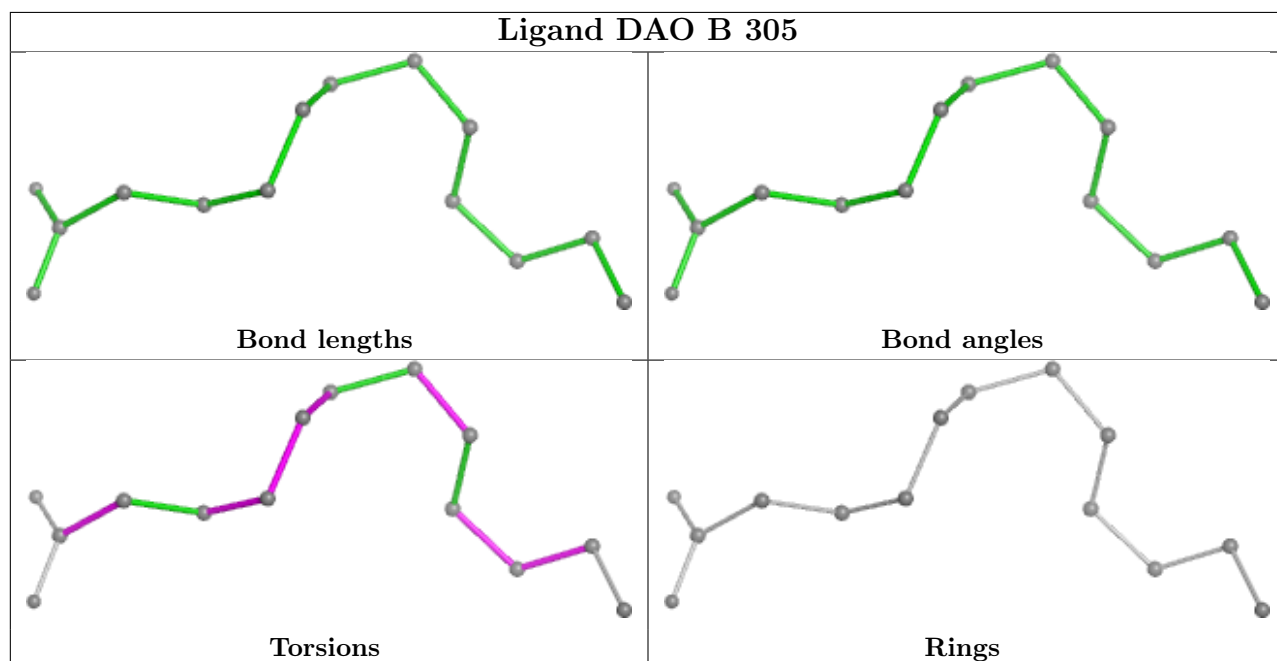
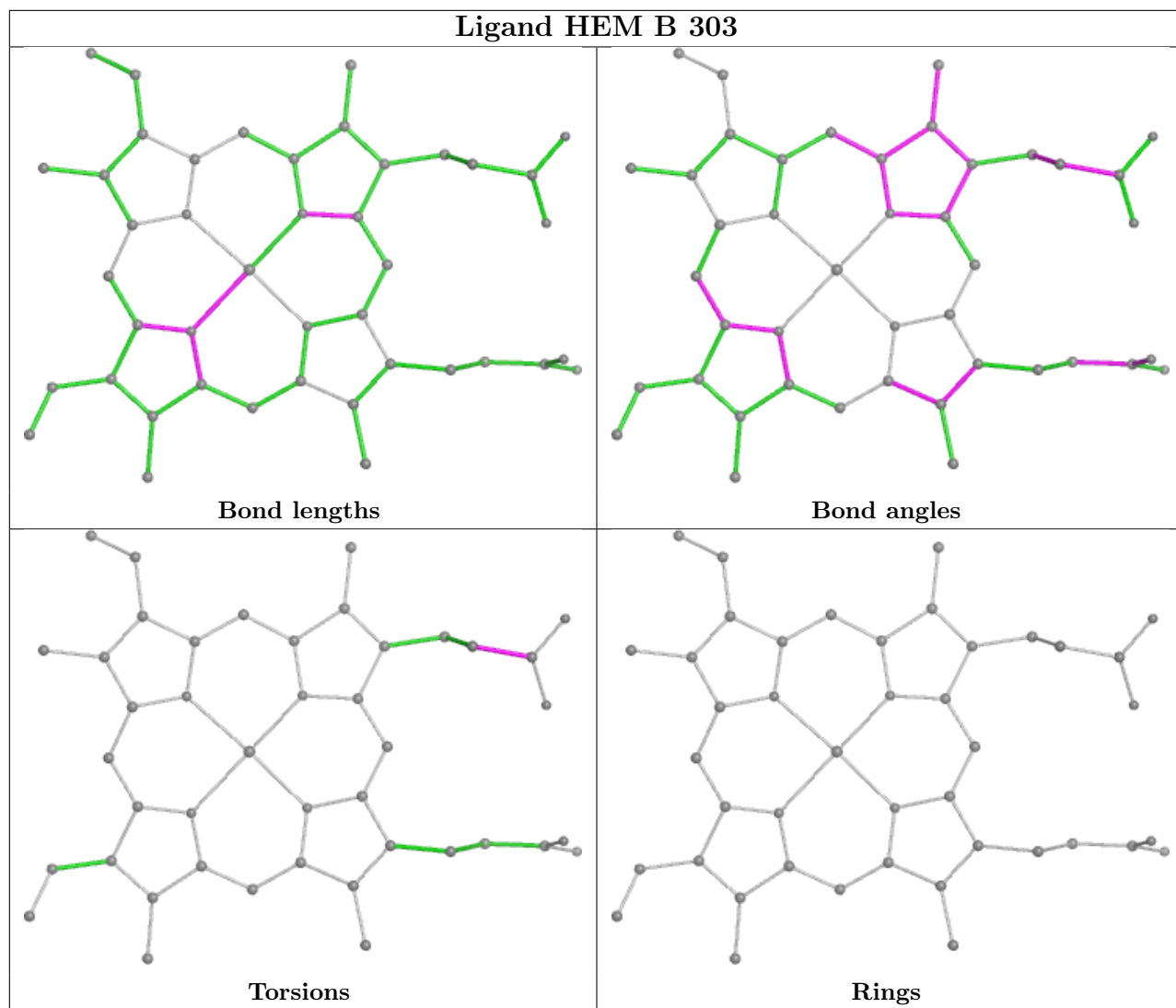
There are no ring outliers.

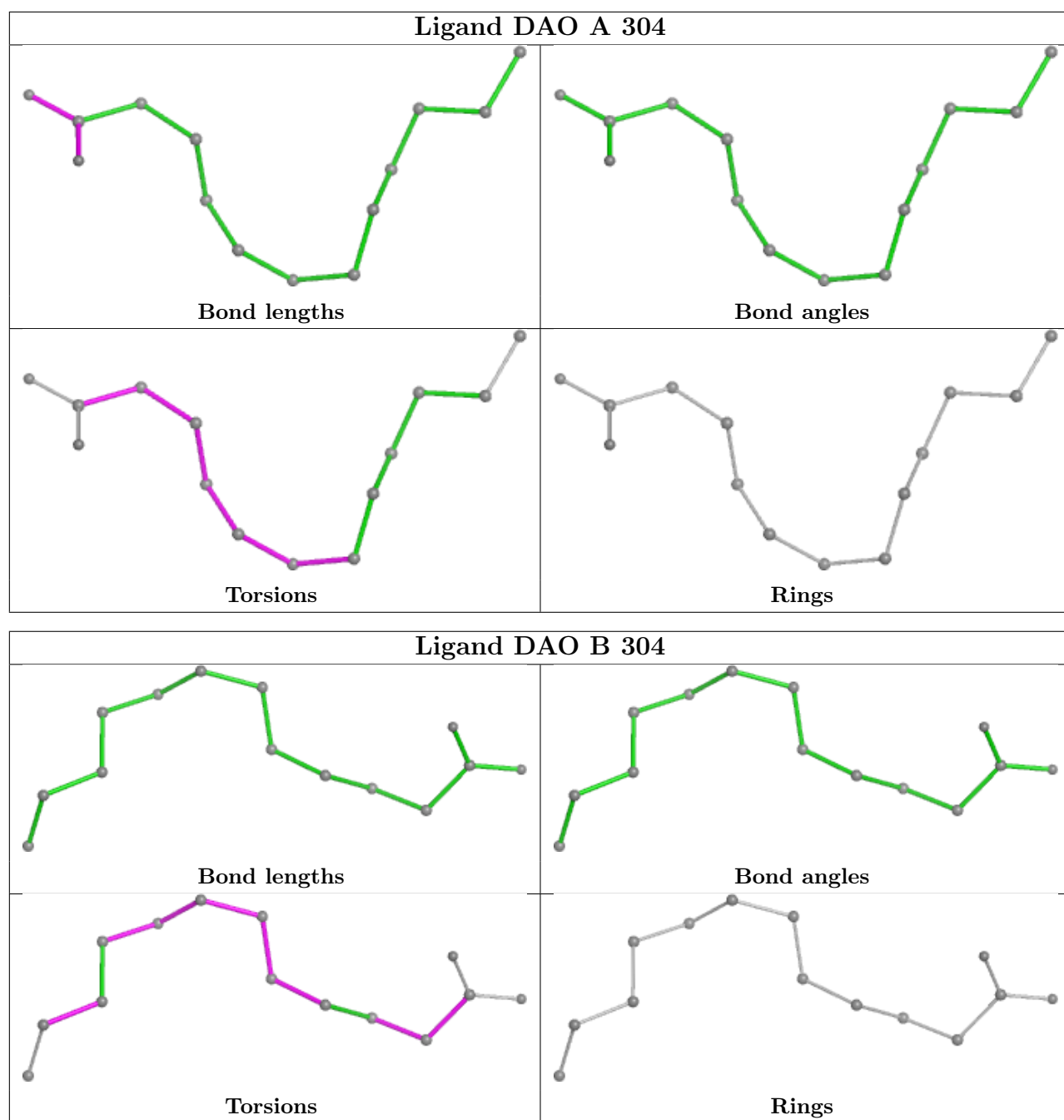
12 monomers are involved in 39 short contacts:

Mol	Chain	Res	Type	Clashes	Symm-Clashes
4	A	305	HEM	2	0
4	B	303	HEM	5	0
3	B	305	DAO	8	0
6	B	307	GOL	2	0
5	A	306	PEG	8	0
6	A	309	GOL	6	0
5	A	308	PEG	3	0
8	A	312	SO4	1	0
3	B	304	DAO	6	0
5	A	310	PEG	1	0
6	B	308	GOL	2	0
6	A	307	GOL	1	0

The following is a two-dimensional graphical depiction of Mogul quality analysis of bond lengths, bond angles, torsion angles, and ring geometry for all instances of the Ligand of Interest. In addition, ligands with molecular weight > 250 and outliers as shown on the validation Tables will also be included. For torsion angles, if less than 5% of the Mogul distribution of torsion angles is within 10 degrees of the torsion angle in question, then that torsion angle is considered an outlier. Any bond that is central to one or more torsion angles identified as an outlier by Mogul will be highlighted in the graph. For rings, the root-mean-square deviation (RMSD) between the ring in question and similar rings identified by Mogul is calculated over all ring torsion angles. If the average RMSD is greater than 60 degrees and the minimal RMSD between the ring in question and any Mogul-identified rings is also greater than 60 degrees, then that ring is considered an outlier. The outliers are highlighted in purple. The color gray indicates Mogul did not find sufficient equivalents in the CSD to analyse the geometry.







## 5.7 Other polymers [i](#)

There are no such residues in this entry.

## 5.8 Polymer linkage issues [i](#)

There are no chain breaks in this entry.

## 6 Fit of model and data [i](#)

### 6.1 Protein, DNA and RNA chains [i](#)

In the following table, the column labelled '#RSRZ > 2' contains the number (and percentage) of RSRZ outliers, followed by percent RSRZ outliers for the chain as percentile scores relative to all X-ray entries and entries of similar resolution. The OWAB column contains the minimum, median, 95<sup>th</sup> percentile and maximum values of the occupancy-weighted average B-factor per residue. The column labelled 'Q < 0.9' lists the number of (and percentage) of residues with an average occupancy less than 0.9.

Mol	Chain	Analysed	<RSRZ>	#RSRZ>2	OWAB(Å <sup>2</sup> )	Q<0.9
1	A	240/240 (100%)	-0.15	6 (2%) 58 60	13, 21, 32, 54	3 (1%)
1	B	240/240 (100%)	0.19	8 (3%) 49 50	16, 25, 40, 61	2 (0%)
All	All	480/480 (100%)	0.02	14 (2%) 54 54	13, 23, 38, 61	5 (1%)

All (14) RSRZ outliers are listed below:

Mol	Chain	Res	Type	RSRZ
1	B	-2	VAL	5.2
1	B	-3	ALA	4.9
1	B	236	LEU	4.7
1	A	-3	ALA	4.4
1	A	236	LEU	3.9
1	A	225	ASP	3.1
1	B	11	ASN	3.1
1	B	10	PRO	3.0
1	B	0	PHE	2.8
1	B	-1	ASP	2.7
1	B	227	CYS	2.7
1	A	-2	VAL	2.2
1	A	235	GLY	2.2
1	A	219	ASP	2.0

### 6.2 Non-standard residues in protein, DNA, RNA chains [i](#)

There are no non-standard protein/DNA/RNA residues in this entry.

### 6.3 Carbohydrates [i](#)

There are no monosaccharides in this entry.

## 6.4 Ligands [i](#)

In the following table, the Atoms column lists the number of modelled atoms in the group and the number defined in the chemical component dictionary. The B-factors column lists the minimum, median, 95<sup>th</sup> percentile and maximum values of B factors of atoms in the group. The column labelled 'Q< 0.9' lists the number of atoms with occupancy less than 0.9.

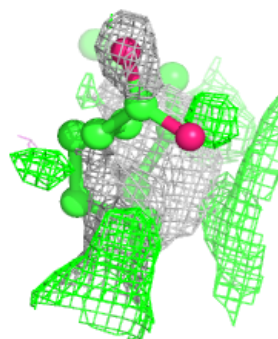
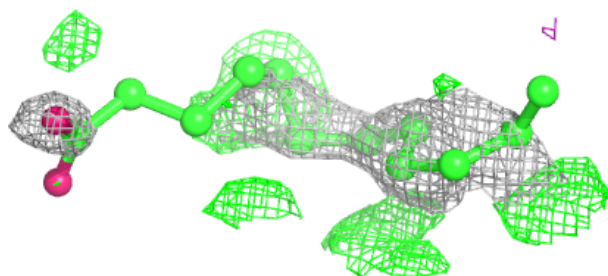
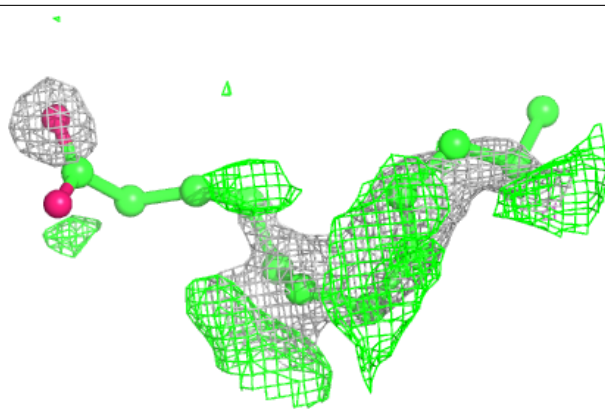
Mol	Type	Chain	Res	Atoms	RSCC	RSR	B-factors(Å <sup>2</sup> )	Q<0.9
2	NAG	A	303	14/15	0.47	0.19	50,56,65,65	0
8	SO4	A	314	5/5	0.51	0.20	48,48,51,53	0
6	GOL	B	308	6/6	0.53	0.17	35,37,39,40	0
8	SO4	B	310	5/5	0.62	0.16	45,46,50,52	0
2	NAG	B	302	14/15	0.64	0.18	43,48,65,70	0
3	DAO	B	305	14/14	0.66	0.26	42,45,48,50	14
5	PEG	A	306	7/7	0.68	0.18	34,35,37,38	0
5	PEG	A	310	7/7	0.70	0.20	28,31,32,32	7
6	GOL	A	309	6/6	0.74	0.14	32,37,38,38	0
3	DAO	A	304	14/14	0.74	0.26	26,56,63,63	0
5	PEG	A	308	7/7	0.75	0.19	27,29,32,33	7
3	DAO	B	304	14/14	0.75	0.25	31,61,70,70	0
6	GOL	B	307	6/6	0.79	0.14	33,35,39,41	0
6	GOL	A	307	6/6	0.80	0.13	28,32,33,34	0
2	NAG	A	302	14/15	0.80	0.14	30,33,50,50	0
6	GOL	B	306	6/6	0.81	0.15	28,31,33,34	6
8	SO4	A	313	5/5	0.81	0.15	36,37,42,44	0
8	SO4	A	312	5/5	0.85	0.13	31,33,36,37	5
2	NAG	A	301	14/15	0.89	0.10	27,30,36,36	0
2	NAG	B	301	14/15	0.91	0.09	29,31,35,36	0
4	HEM	B	303	43/43	0.98	0.07	18,19,23,32	0
7	MG	B	309	1/1	0.98	0.04	22,22,22,22	0
4	HEM	A	305	43/43	0.98	0.06	14,16,21,27	0
7	MG	A	311	1/1	0.99	0.04	17,17,17,17	0

The following is a graphical depiction of the model fit to experimental electron density of all instances of the Ligand of Interest. In addition, ligands with molecular weight > 250 and outliers as shown on the geometry validation Tables will also be included. Each fit is shown from different orientation to approximate a three-dimensional view.

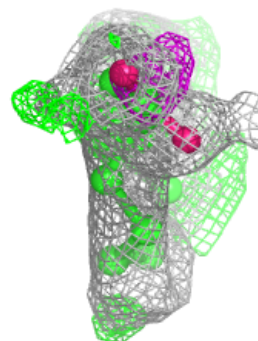
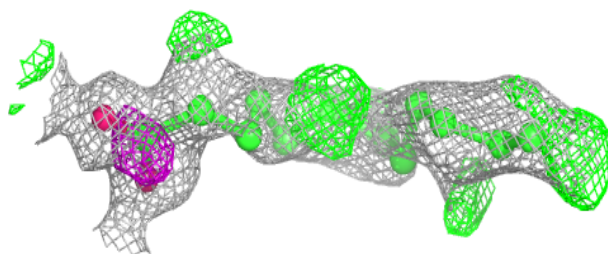
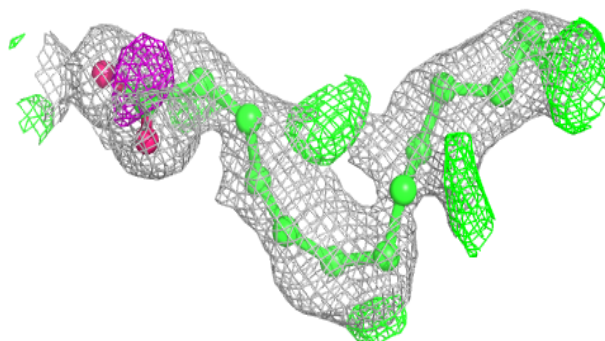


**Electron density around DAO B 305:**

$2mF_o-DF_c$  (at 0.7 rmsd) in gray  
 $mF_o-DF_c$  (at 3 rmsd) in purple (negative)  
and green (positive)

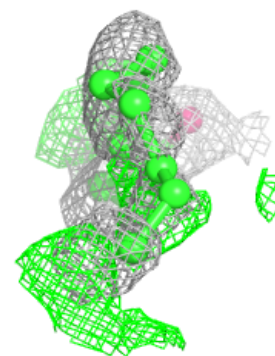
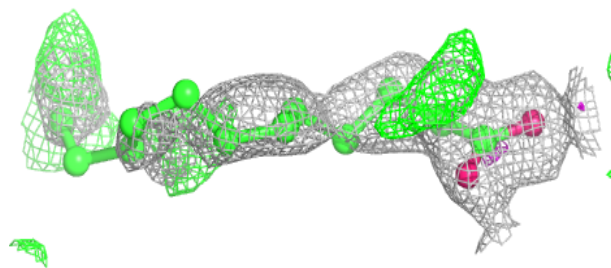
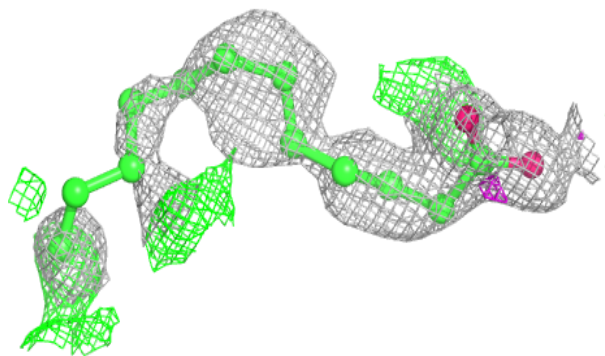
**Electron density around DAO A 304:**

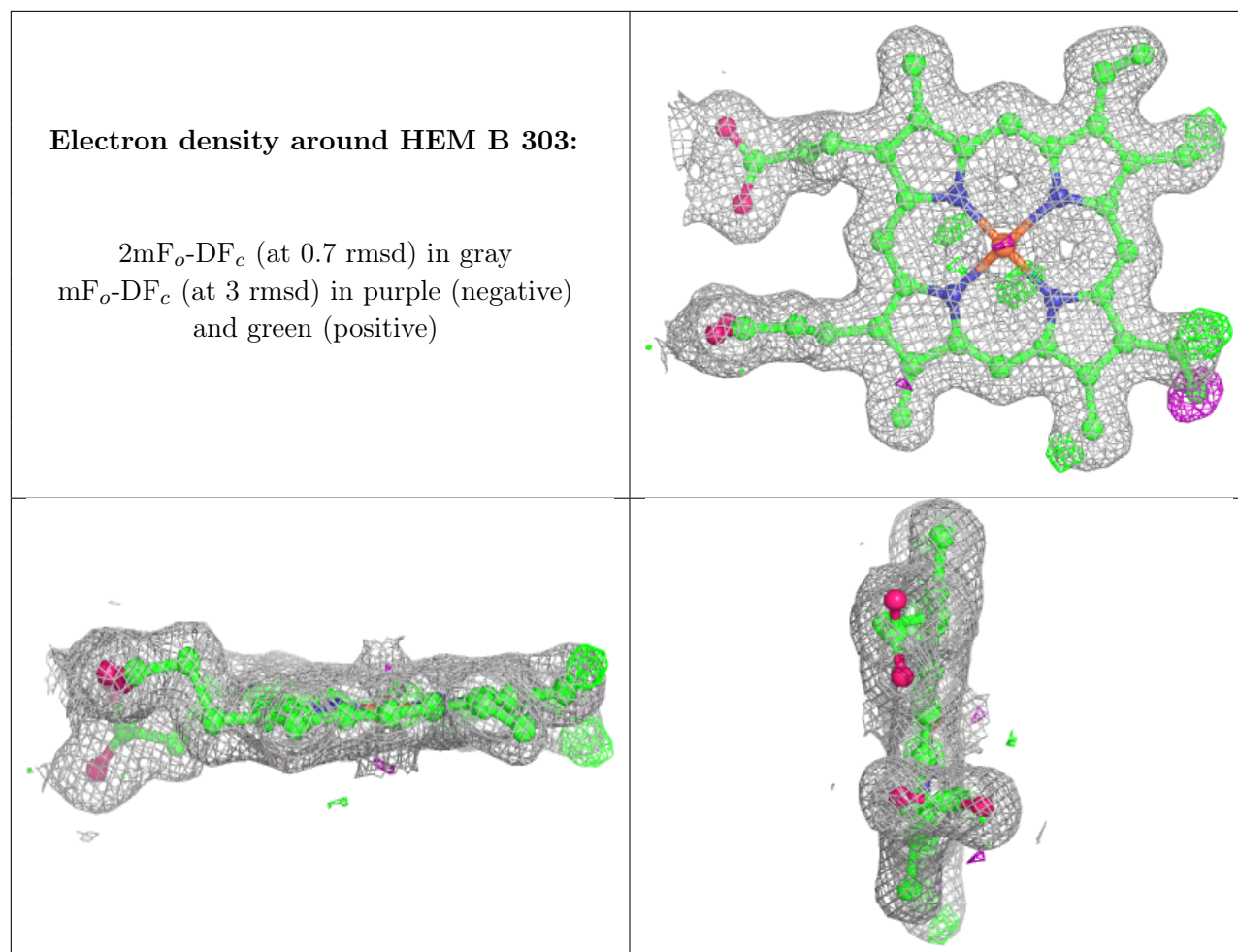
$2mF_o-DF_c$  (at 0.7 rmsd) in gray  
 $mF_o-DF_c$  (at 3 rmsd) in purple (negative)  
and green (positive)



**Electron density around DAO B 304:**

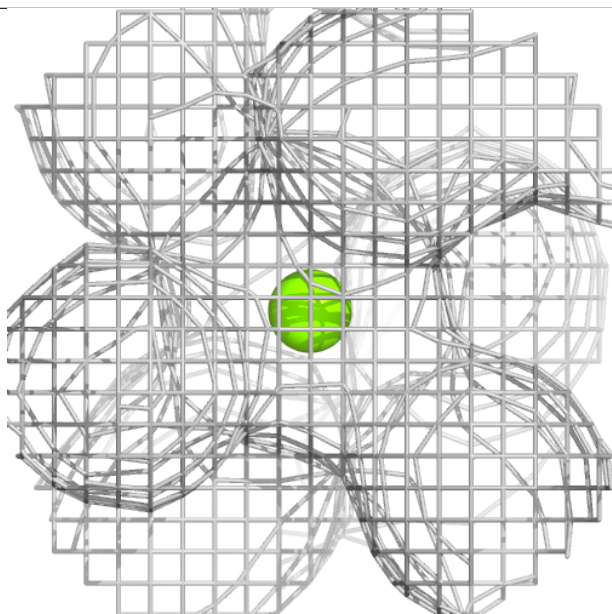
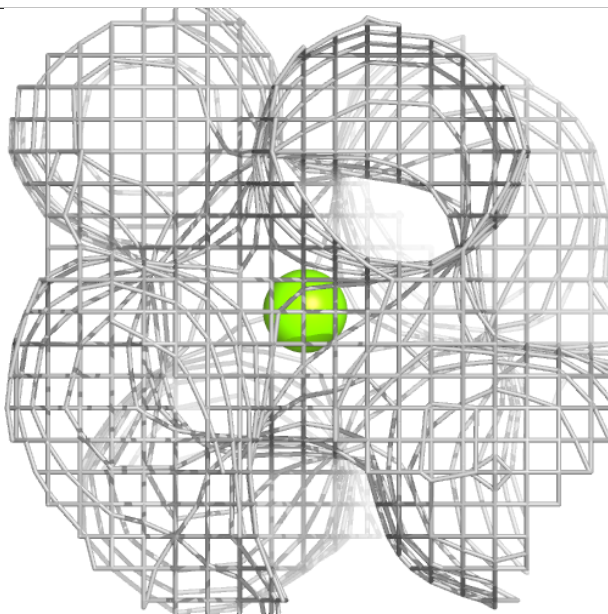
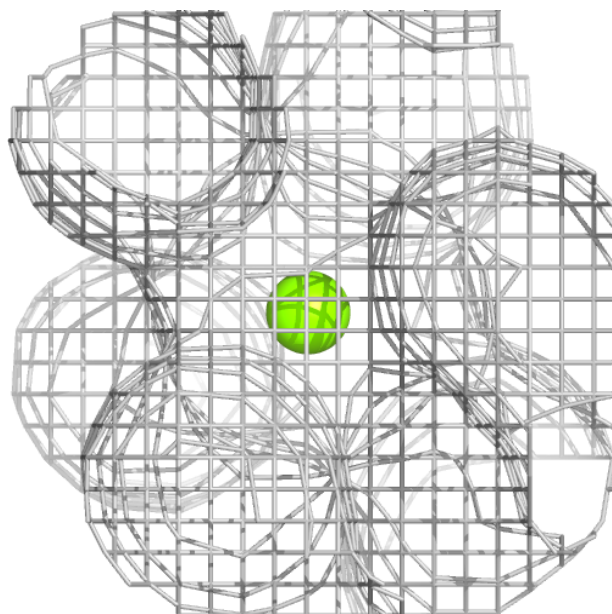
$2mF_o-DF_c$  (at 0.7 rmsd) in gray  
 $mF_o-DF_c$  (at 3 rmsd) in purple (negative)  
and green (positive)

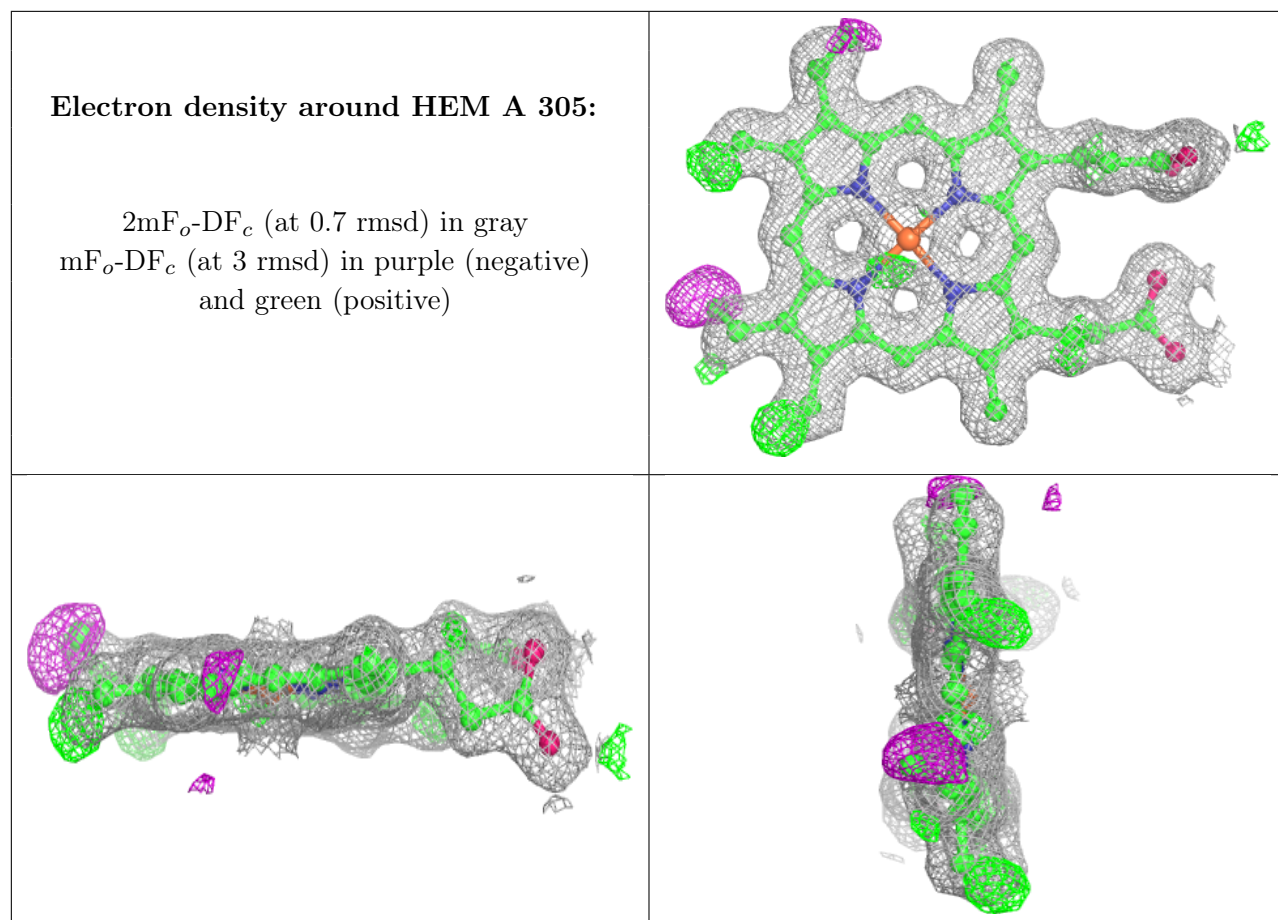




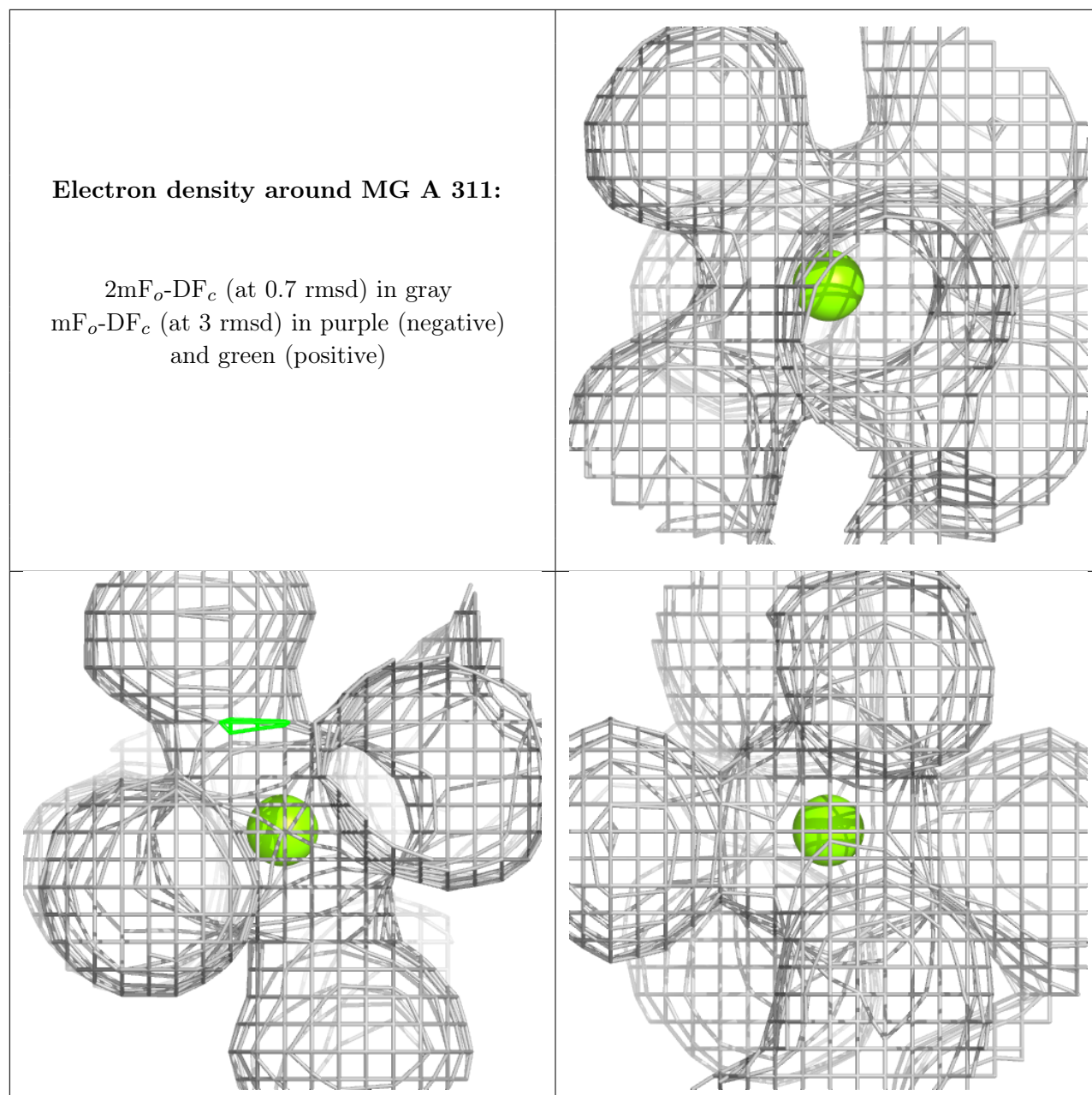
**Electron density around MG B 309:**

$2mF_o-DF_c$  (at 0.7 rmsd) in gray  
 $mF_o-DF_c$  (at 3 rmsd) in purple (negative)  
and green (positive)









## 6.5 Other polymers ⓘ

There are no such residues in this entry.