



Full wwPDB X-ray Structure Validation Report ⓘ

Sep 5, 2024 – 04:15 pm BST

PDB ID : 8ROE
Title : Human cohesin SMC1A-HD(shortCC-EQ)/RAD21-C complex - ADP-bound conformation
Authors : Vitoria Gomes, M.; Romier, C.
Deposited on : 2024-01-11
Resolution : 1.36 Å(reported)

This is a Full wwPDB X-ray Structure Validation Report for a publicly released PDB entry.

We welcome your comments at validation@mail.wwpdb.org

A user guide is available at

<https://www.wwpdb.org/validation/2017/XrayValidationReportHelp>

with specific help available everywhere you see the ⓘ symbol.

The types of validation reports are described at

<http://www.wwpdb.org/validation/2017/FAQs#types>.

The following versions of software and data (see [references ⓘ](#)) were used in the production of this report:

MolProbity : 4.02b-467
Mogul : 1.8.4, CSD as541be (2020)
Xtriage (Phenix) : 1.13
EDS : 3.0
buster-report : 1.1.7 (2018)
Percentile statistics : 20231227.v01 (using entries in the PDB archive December 27th 2023)
CCP4 : 9.0.002 (Gargrove)
Density-Fitness : 1.0.11
Ideal geometry (proteins) : Engh & Huber (2001)
Ideal geometry (DNA, RNA) : Parkinson et al. (1996)
Validation Pipeline (wwPDB-VP) : 2.38.2

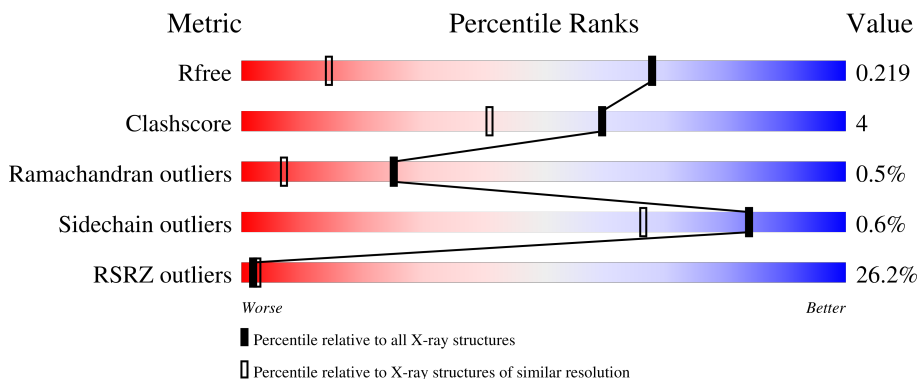
1 Overall quality at a glance

The following experimental techniques were used to determine the structure:

X-RAY DIFFRACTION

The reported resolution of this entry is 1.36 Å.

Percentile scores (ranging between 0-100) for global validation metrics of the entry are shown in the following graphic. The table shows the number of entries on which the scores are based.



Metric	Whole archive (#Entries)	Similar resolution (#Entries, resolution range(Å))
R_{free}	164625	1089 (1.36-1.36)
Clashscore	180529	1157 (1.36-1.36)
Ramachandran outliers	177936	1146 (1.36-1.36)
Sidechain outliers	177891	1146 (1.36-1.36)
RSRZ outliers	164620	1088 (1.36-1.36)

The table below summarises the geometric issues observed across the polymeric chains and their fit to the electron density. The red, orange, yellow and green segments of the lower bar indicate the fraction of residues that contain outliers for ≥ 3 , 2, 1 and 0 types of geometric quality criteria respectively. A grey segment represents the fraction of residues that are not modelled. The numeric value for each fraction is indicated below the corresponding segment, with a dot representing fractions $\leq 5\%$. The upper red bar (where present) indicates the fraction of residues that have poor fit to the electron density. The numeric value is given above the bar.

Mol	Chain	Length	Quality of chain
1	A	366	
2	B	81	

2 Entry composition [i](#)

There are 4 unique types of molecules in this entry. The entry contains 3741 atoms, of which 0 are hydrogens and 0 are deuteriums.

In the tables below, the ZeroOcc column contains the number of atoms modelled with zero occupancy, the AltConf column contains the number of residues with at least one atom in alternate conformation and the Trace column contains the number of residues modelled with at most 2 atoms.

- Molecule 1 is a protein called Structural maintenance of chromosomes protein 1A.

Mol	Chain	Residues	Atoms					ZeroOcc	AltConf	Trace
			Total	C	N	O	S			
1	A	357	2874	1837	483	544	10	0	18	0

There are 15 discrepancies between the modelled and reference sequences:

Chain	Residue	Modelled	Actual	Comment	Reference
A	176	GLY	-	linker	UNP Q14683
A	177	SER	-	linker	UNP Q14683
A	178	GLY	-	linker	UNP Q14683
A	179	SER	-	linker	UNP Q14683
A	180	LEU	-	linker	UNP Q14683
A	181	VAL	-	linker	UNP Q14683
A	182	PRO	-	linker	UNP Q14683
A	183	ARG	-	linker	UNP Q14683
A	184	GLY	-	linker	UNP Q14683
A	185	SER	-	linker	UNP Q14683
A	1053	GLY	-	linker	UNP Q14683
A	1054	SER	-	linker	UNP Q14683
A	1055	ALA	-	linker	UNP Q14683
A	1056	LYS	-	linker	UNP Q14683
A	1157	GLN	GLU	engineered mutation	UNP Q14683

- Molecule 2 is a protein called 64-kDa C-terminal product.

Mol	Chain	Residues	Atoms					ZeroOcc	AltConf	Trace
			Total	C	N	O	S			
2	B	67	539	346	92	100	1	0	2	0

There are 9 discrepancies between the modelled and reference sequences:

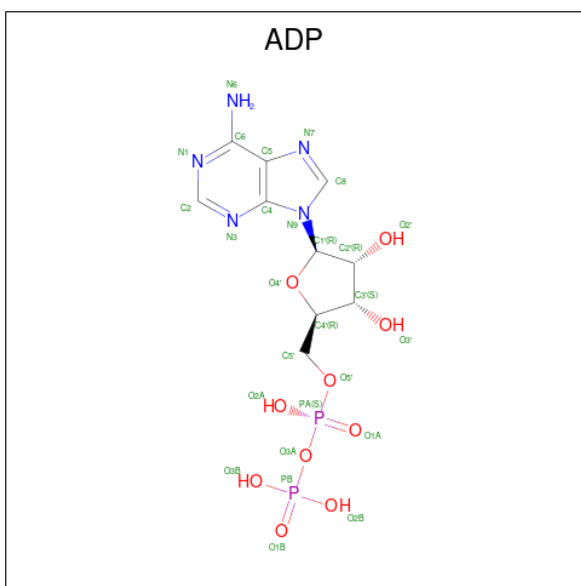
Chain	Residue	Modelled	Actual	Comment	Reference
B	557	MET	-	initiating methionine	UNP O60216

Continued on next page...

Continued from previous page...

Chain	Residue	Modelled	Actual	Comment	Reference
B	630	GLY	-	expression tag	UNP O60216
B	631	SER	-	expression tag	UNP O60216
B	632	LEU	-	expression tag	UNP O60216
B	633	GLU	-	expression tag	UNP O60216
B	634	VAL	-	expression tag	UNP O60216
B	635	LEU	-	expression tag	UNP O60216
B	636	PHE	-	expression tag	UNP O60216
B	637	GLN	-	expression tag	UNP O60216

- Molecule 3 is ADENOSINE-5'-DIPHOSPHATE (three-letter code: ADP) (formula: $C_{10}H_{15}N_5O_{10}P_2$) (labeled as "Ligand of Interest" by depositor).



Mol	Chain	Residues	Atoms				ZeroOcc	AltConf	
			Total	C	N	O			P
3	A	1	27	10	5	10	2	0	0

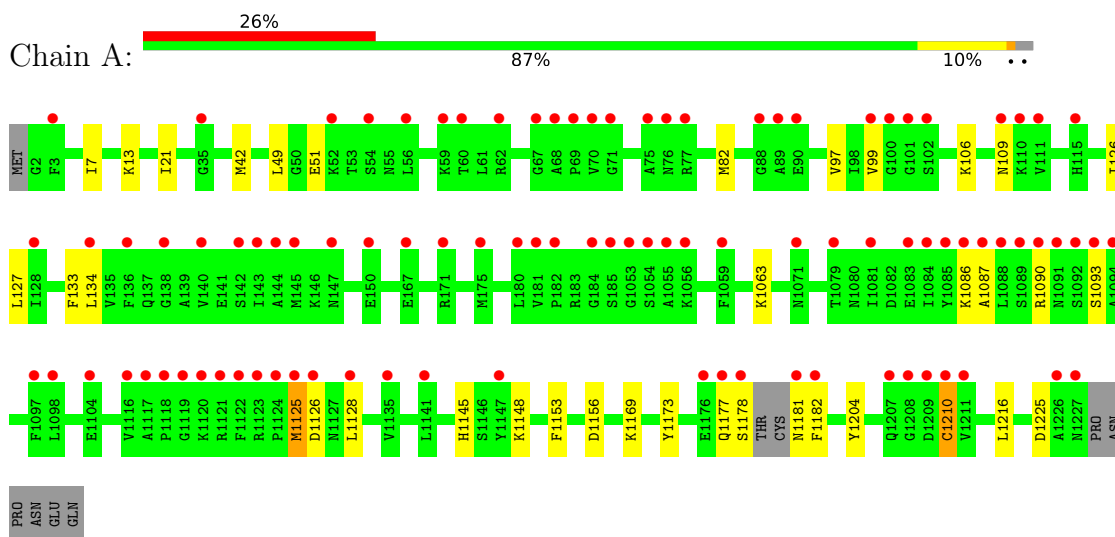
- Molecule 4 is water.

Mol	Chain	Residues	Atoms		ZeroOcc	AltConf
4	A	250	Total	O	0	0
			250	250		
4	B	51	Total	O	0	0
			51	51		

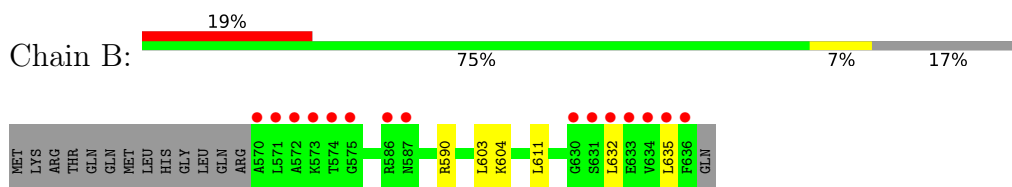
3 Residue-property plots [i](#)

These plots are drawn for all protein, RNA, DNA and oligosaccharide chains in the entry. The first graphic for a chain summarises the proportions of the various outlier classes displayed in the second graphic. The second graphic shows the sequence view annotated by issues in geometry and electron density. Residues are color-coded according to the number of geometric quality criteria for which they contain at least one outlier: green = 0, yellow = 1, orange = 2 and red = 3 or more. A red dot above a residue indicates a poor fit to the electron density ($RSRZ > 2$). Stretches of 2 or more consecutive residues without any outlier are shown as a green connector. Residues present in the sample, but not in the model, are shown in grey.

- Molecule 1: Structural maintenance of chromosomes protein 1A



- Molecule 2: 64-kDa C-terminal product



4 Data and refinement statistics

Property	Value	Source
Space group	I 2 2 2	Depositor
Cell constants a, b, c, α , β , γ	66.04Å 113.83Å 134.19Å 90.00° 90.00° 90.00°	Depositor
Resolution (Å)	43.49 – 1.36 43.49 – 1.36	Depositor EDS
% Data completeness (in resolution range)	99.9 (43.49-1.36) 99.9 (43.49-1.36)	Depositor EDS
R_{merge}	0.07	Depositor
R_{sym}	(Not available)	Depositor
$\langle I/\sigma(I) \rangle$ ¹	1.32 (at 1.36Å)	Xtrriage
Refinement program	PHENIX 1.17_3644	Depositor
R, R_{free}	0.204 , 0.219 0.205 , 0.219	Depositor DCC
R_{free} test set	5395 reflections (4.99%)	wwPDB-VP
Wilson B-factor (Å ²)	19.1	Xtrriage
Anisotropy	0.278	Xtrriage
Bulk solvent k_{sol} (e/Å ³), B_{sol} (Å ²)	0.35 , 41.2	EDS
L-test for twinning ²	$\langle L \rangle = 0.49$, $\langle L^2 \rangle = 0.32$	Xtrriage
Estimated twinning fraction	No twinning to report.	Xtrriage
F_o, F_c correlation	0.96	EDS
Total number of atoms	3741	wwPDB-VP
Average B, all atoms (Å ²)	31.0	wwPDB-VP

Xtrriage's analysis on translational NCS is as follows: *The largest off-origin peak in the Patterson function is 4.47% of the height of the origin peak. No significant pseudotranslation is detected.*

¹Intensities estimated from amplitudes.

²Theoretical values of $\langle |L| \rangle$, $\langle L^2 \rangle$ for acentric reflections are 0.5, 0.333 respectively for untwinned datasets, and 0.375, 0.2 for perfectly twinned datasets.

5 Model quality

5.1 Standard geometry

Bond lengths and bond angles in the following residue types are not validated in this section: ADP

The Z score for a bond length (or angle) is the number of standard deviations the observed value is removed from the expected value. A bond length (or angle) with $|Z| > 5$ is considered an outlier worth inspection. RMSZ is the root-mean-square of all Z scores of the bond lengths (or angles).

Mol	Chain	Bond lengths		Bond angles	
		RMSZ	# Z >5	RMSZ	# Z >5
1	A	0.33	0/2983	0.57	0/4013
2	B	0.32	0/554	0.56	0/746
All	All	0.33	0/3537	0.56	0/4759

There are no bond length outliers.

There are no bond angle outliers.

There are no chirality outliers.

There are no planarity outliers.

5.2 Too-close contacts

In the following table, the Non-H and H(model) columns list the number of non-hydrogen atoms and hydrogen atoms in the chain respectively. The H(added) column lists the number of hydrogen atoms added and optimized by MolProbity. The Clashes column lists the number of clashes within the asymmetric unit, whereas Symm-Clashes lists symmetry-related clashes.

Mol	Chain	Non-H	H(model)	H(added)	Clashes	Symm-Clashes
1	A	2874	0	2929	27	0
2	B	539	0	556	5	0
3	A	27	0	12	1	0
4	A	250	0	0	4	1
4	B	51	0	0	0	0
All	All	3741	0	3497	29	1

The all-atom clashscore is defined as the number of clashes found per 1000 atoms (including hydrogen atoms). The all-atom clashscore for this structure is 4.

All (29) close contacts within the same asymmetric unit are listed below, sorted by their clash magnitude.

Atom-1	Atom-2	Interatomic distance (Å)	Clash overlap (Å)
1:A:1210:CYS:SG	4:A:2324:HOH:O	2.49	0.71
1:A:1173:TYR:O	1:A:1177[B]:GLN:NE2	2.24	0.70
1:A:1216:LEU:HD11	2:B:611:LEU:HD13	1.73	0.69
1:A:49:LEU:HD21	1:A:82[A]:MET:HE1	1.77	0.66
1:A:1086:LYS:O	1:A:1090:ARG:N	2.34	0.59
1:A:42:MET:HE2	1:A:1156:ASP:HB2	1.83	0.59
1:A:1225:ASP:HB2	2:B:590[B]:ARG:HD3	1.88	0.55
1:A:1087:ALA:O	1:A:1090:ARG:HD3	2.06	0.55
1:A:127:LEU:HD11	1:A:1148:LYS:HE3	1.90	0.54
1:A:106:LYS:HE2	1:A:109:ASN:HA	1.89	0.54
1:A:1063:LYS:NZ	4:A:2109:HOH:O	2.36	0.53
1:A:1087:ALA:O	1:A:1090:ARG:NH1	2.39	0.52
1:A:51:GLU:OE2	4:A:2102:HOH:O	2.19	0.52
1:A:1093[B]:SER:OG	4:A:2101:HOH:O	2.13	0.50
1:A:1090:ARG:HB2	1:A:1169:LYS:HZ2	1.78	0.48
1:A:97:VAL:HG12	1:A:99:VAL:HG23	1.96	0.47
2:B:603:LEU:HD21	2:B:635:LEU:HD13	1.97	0.47
2:B:632:LEU:HD23	2:B:635:LEU:HD12	1.97	0.46
1:A:49:LEU:HD13	1:A:133:PHE:CE2	2.52	0.45
1:A:7[A]:ILE:HB	1:A:21:ILE:HB	1.99	0.45
1:A:49:LEU:HD22	1:A:126:ILE:HG21	2.00	0.44
1:A:1090:ARG:HB2	1:A:1169:LYS:NZ	2.33	0.44
1:A:82[A]:MET:HE2	1:A:82[A]:MET:HB2	1.70	0.44
1:A:1204:TYR:CD1	2:B:604:LYS:HG2	2.54	0.43
1:A:1178:SER:HA	1:A:1182:PHE:O	2.19	0.43
1:A:1125:MET:HA	1:A:1128:LEU:HD13	2.02	0.41
1:A:1145:HIS:HB2	1:A:1153:PHE:HZ	1.87	0.40
1:A:13:LYS:HA	3:A:2001:ADP:N6	2.36	0.40

All (1) symmetry-related close contacts are listed below. The label for Atom-2 includes the symmetry operator and encoded unit-cell translations to be applied.

Atom-1	Atom-2	Interatomic distance (Å)	Clash overlap (Å)
4:A:2286:HOH:O	4:A:2286:HOH:O[3_655]	2.18	0.02

5.3 Torsion angles [i](#)

5.3.1 Protein backbone [i](#)

In the following table, the Percentiles column shows the percent Ramachandran outliers of the chain as a percentile score with respect to all X-ray entries followed by that with respect to entries

of similar resolution.

The Analysed column shows the number of residues for which the backbone conformation was analysed, and the total number of residues.

Mol	Chain	Analysed	Favoured	Allowed	Outliers	Percentiles	
1	A	372/366 (102%)	366 (98%)	4 (1%)	2 (0%)	25	7
2	B	67/81 (83%)	67 (100%)	0	0	100	100
All	All	439/447 (98%)	433 (99%)	4 (1%)	2 (0%)	25	7

All (2) Ramachandran outliers are listed below:

Mol	Chain	Res	Type
1	A	1125	MET
1	A	1126	ASP

5.3.2 Protein sidechains [i](#)

In the following table, the Percentiles column shows the percent sidechain outliers of the chain as a percentile score with respect to all X-ray entries followed by that with respect to entries of similar resolution.

The Analysed column shows the number of residues for which the sidechain conformation was analysed, and the total number of residues.

Mol	Chain	Analysed	Rotameric	Outliers	Percentiles	
1	A	317/307 (103%)	315 (99%)	2 (1%)	84	66
2	B	58/69 (84%)	58 (100%)	0	100	100
All	All	375/376 (100%)	373 (100%)	2 (0%)	84	72

All (2) residues with a non-rotameric sidechain are listed below:

Mol	Chain	Res	Type
1	A	134	LEU
1	A	1210	CYS

Sometimes sidechains can be flipped to improve hydrogen bonding and reduce clashes. There are no such sidechains identified.

5.3.3 RNA [i](#)

There are no RNA molecules in this entry.

5.4 Non-standard residues in protein, DNA, RNA chains [i](#)

There are no non-standard protein/DNA/RNA residues in this entry.

5.5 Carbohydrates [i](#)

There are no oligosaccharides in this entry.

5.6 Ligand geometry [i](#)

1 ligand is modelled in this entry.

In the following table, the Counts columns list the number of bonds (or angles) for which Mogul statistics could be retrieved, the number of bonds (or angles) that are observed in the model and the number of bonds (or angles) that are defined in the Chemical Component Dictionary. The Link column lists molecule types, if any, to which the group is linked. The Z score for a bond length (or angle) is the number of standard deviations the observed value is removed from the expected value. A bond length (or angle) with $|Z| > 2$ is considered an outlier worth inspection. RMSZ is the root-mean-square of all Z scores of the bond lengths (or angles).

Mol	Type	Chain	Res	Link	Bond lengths			Bond angles		
					Counts	RMSZ	# Z > 2	Counts	RMSZ	# Z > 2
3	ADP	A	2001	-	24,29,29	3.59	8 (33%)	29,45,45	1.40	4 (13%)

In the following table, the Chirals column lists the number of chiral outliers, the number of chiral centers analysed, the number of these observed in the model and the number defined in the Chemical Component Dictionary. Similar counts are reported in the Torsion and Rings columns. '-' means no outliers of that kind were identified.

Mol	Type	Chain	Res	Link	Chirals	Torsions	Rings
3	ADP	A	2001	-	-	6/12/32/32	0/3/3/3

All (8) bond length outliers are listed below:

Mol	Chain	Res	Type	Atoms	Z	Observed(Å)	Ideal(Å)
3	A	2001	ADP	C2'-C3'	-10.50	1.24	1.53
3	A	2001	ADP	O4'-C1'	-8.78	1.28	1.41
3	A	2001	ADP	C2'-C1'	7.27	1.64	1.53
3	A	2001	ADP	O3'-C3'	3.95	1.52	1.43
3	A	2001	ADP	C5'-C4'	-3.37	1.41	1.51
3	A	2001	ADP	C6-N6	3.37	1.46	1.34
3	A	2001	ADP	O4'-C4'	3.09	1.51	1.45
3	A	2001	ADP	O2'-C2'	2.72	1.49	1.43

All (4) bond angle outliers are listed below:

Mol	Chain	Res	Type	Atoms	Z	Observed(°)	Ideal(°)
3	A	2001	ADP	N3-C2-N1	-4.57	121.53	128.68
3	A	2001	ADP	C4-C5-N7	-3.19	106.07	109.40
3	A	2001	ADP	C3'-C2'-C1'	2.50	104.74	100.98
3	A	2001	ADP	O4'-C1'-C2'	-2.04	103.94	106.93

There are no chirality outliers.

All (6) torsion outliers are listed below:

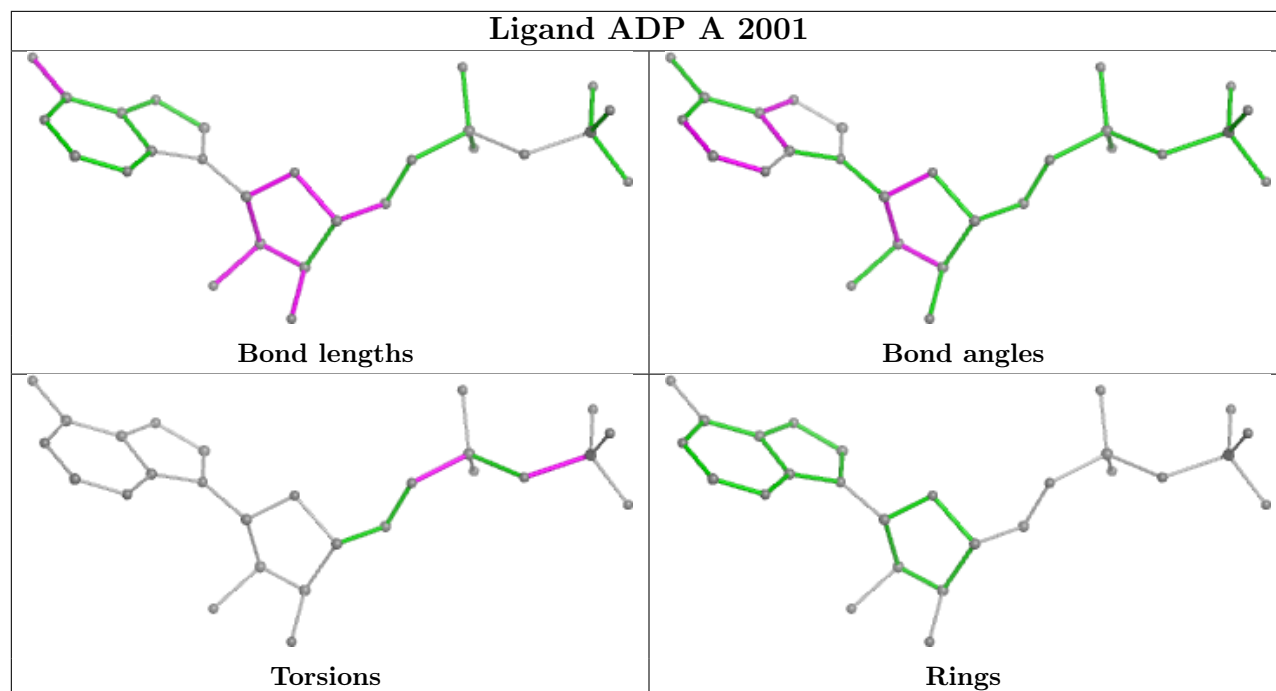
Mol	Chain	Res	Type	Atoms
3	A	2001	ADP	C5'-O5'-PA-O1A
3	A	2001	ADP	C5'-O5'-PA-O2A
3	A	2001	ADP	PA-O3A-PB-O1B
3	A	2001	ADP	C5'-O5'-PA-O3A
3	A	2001	ADP	PA-O3A-PB-O2B
3	A	2001	ADP	PA-O3A-PB-O3B

There are no ring outliers.

1 monomer is involved in 1 short contact:

Mol	Chain	Res	Type	Clashes	Symm-Clashes
3	A	2001	ADP	1	0

The following is a two-dimensional graphical depiction of Mogul quality analysis of bond lengths, bond angles, torsion angles, and ring geometry for all instances of the Ligand of Interest. In addition, ligands with molecular weight > 250 and outliers as shown on the validation Tables will also be included. For torsion angles, if less than 5% of the Mogul distribution of torsion angles is within 10 degrees of the torsion angle in question, then that torsion angle is considered an outlier. Any bond that is central to one or more torsion angles identified as an outlier by Mogul will be highlighted in the graph. For rings, the root-mean-square deviation (RMSD) between the ring in question and similar rings identified by Mogul is calculated over all ring torsion angles. If the average RMSD is greater than 60 degrees and the minimal RMSD between the ring in question and any Mogul-identified rings is also greater than 60 degrees, then that ring is considered an outlier. The outliers are highlighted in purple. The color gray indicates Mogul did not find sufficient equivalents in the CSD to analyse the geometry.



5.7 Other polymers [i](#)

There are no such residues in this entry.

5.8 Polymer linkage issues [i](#)

There are no chain breaks in this entry.

6 Fit of model and data [i](#)

6.1 Protein, DNA and RNA chains [i](#)

In the following table, the column labelled ‘#RSRZ > 2’ contains the number (and percentage) of RSRZ outliers, followed by percent RSRZ outliers for the chain as percentile scores relative to all X-ray entries and entries of similar resolution. The OWAB column contains the minimum, median, 95th percentile and maximum values of the occupancy-weighted average B-factor per residue. The column labelled ‘Q < 0.9’ lists the number of (and percentage) of residues with an average occupancy less than 0.9.

Mol	Chain	Analysed	<RSRZ>	#RSRZ>2	OWAB(Å ²)	Q<0.9
1	A	357/366 (97%)	1.38	96 (26%) 2 2	11, 26, 58, 113	18 (5%)
2	B	67/81 (82%)	1.21	15 (22%) 3 3	12, 22, 71, 83	2 (2%)
All	All	424/447 (94%)	1.35	111 (26%) 2 2	11, 26, 60, 113	20 (4%)

All (111) RSRZ outliers are listed below:

Mol	Chain	Res	Type	RSRZ
1	A	1090	ARG	7.7
1	A	1097	PHE	7.5
1	A	1123	ARG	7.1
1	A	1122	PHE	7.0
1	A	1210	CYS	6.6
2	B	636	PHE	6.5
1	A	1117	ALA	6.3
2	B	570	ALA	6.2
1	A	1211	VAL	5.8
2	B	630	GLY	5.7
2	B	635	LEU	5.5
2	B	634	VAL	5.3
1	A	145	MET	5.3
1	A	70	VAL	5.2
1	A	1089	SER	4.9
1	A	1124	PRO	4.9
1	A	1118	PRO	4.8
1	A	144	ALA	4.7
1	A	1178	SER	4.7
1	A	1121	ARG	4.7
1	A	99	VAL	4.6
2	B	632	LEU	4.5
1	A	1119	GLY	4.4
1	A	1092	SER	4.3

Continued on next page...

Continued from previous page...

Mol	Chain	Res	Type	RSRZ
1	A	1125	MET	4.2
1	A	1088	LEU	4.1
1	A	1087	ALA	4.1
1	A	1054	SER	4.0
1	A	1093[A]	SER	3.9
1	A	1227	ASN	3.9
1	A	1091	ASN	3.7
1	A	69	PRO	3.7
1	A	1055	ALA	3.7
1	A	76[A]	ASN	3.6
1	A	71	GLY	3.6
1	A	150	GLU	3.5
2	B	574	THR	3.5
1	A	136	PHE	3.5
1	A	184	GLY	3.5
1	A	185	SER	3.4
1	A	1177[A]	GLN	3.4
2	B	571	LEU	3.4
1	A	1181	ASN	3.4
2	B	572	ALA	3.4
2	B	631	SER	3.3
1	A	128	ILE	3.3
1	A	1085	TYR	3.2
1	A	68	ALA	3.2
1	A	1094	ALA	3.2
1	A	1226	ALA	3.2
1	A	1126	ASP	3.1
1	A	60	THR	3.1
1	A	134	LEU	3.1
1	A	1128	LEU	3.0
1	A	1120	LYS	3.0
1	A	3	PHE	3.0
1	A	101	GLY	3.0
1	A	1056	LYS	3.0
1	A	1208	GLY	2.9
1	A	1084	ILE	2.9
1	A	171	ARG	2.9
1	A	77	ARG	2.8
1	A	1053	GLY	2.8
1	A	1083	GLU	2.8
1	A	54	SER	2.8
1	A	138	GLY	2.7

Continued on next page...

Continued from previous page...

Mol	Chain	Res	Type	RSRZ
1	A	1147	TYR	2.7
1	A	100	GLY	2.7
1	A	110	LYS	2.6
2	B	573	LYS	2.6
1	A	62	ARG	2.6
1	A	142[A]	SER	2.6
1	A	1135	VAL	2.5
1	A	1059	PHE	2.5
1	A	90	GLU	2.5
1	A	167	GLU	2.4
1	A	175	MET	2.4
1	A	1182	PHE	2.4
1	A	1081	ILE	2.4
1	A	89	ALA	2.4
1	A	1116	VAL	2.3
2	B	575	GLY	2.3
2	B	587	ASN	2.3
1	A	1104	GLU	2.3
1	A	52	LYS	2.3
1	A	147	ASN	2.3
1	A	1209	ASP	2.3
1	A	35	GLY	2.3
1	A	115[A]	HIS	2.3
1	A	88	GLY	2.2
1	A	1071	ASN	2.2
1	A	56	LEU	2.2
1	A	1207	GLN	2.2
2	B	633	GLU	2.2
1	A	1079	THR	2.1
1	A	111	VAL	2.1
1	A	182	PRO	2.1
1	A	180	LEU	2.1
1	A	1176	GLU	2.1
1	A	181	VAL	2.1
1	A	109	ASN	2.0
2	B	586	ARG	2.0
1	A	59	LYS	2.0
1	A	143	ILE	2.0
1	A	67	GLY	2.0
1	A	102[A]	SER	2.0
1	A	140	VAL	2.0
1	A	75	ALA	2.0

Continued on next page...

Continued from previous page...

Mol	Chain	Res	Type	RSRZ
1	A	1086	LYS	2.0
1	A	1098	LEU	2.0
1	A	1141	LEU	2.0

6.2 Non-standard residues in protein, DNA, RNA chains [i](#)

There are no non-standard protein/DNA/RNA residues in this entry.

6.3 Carbohydrates [i](#)

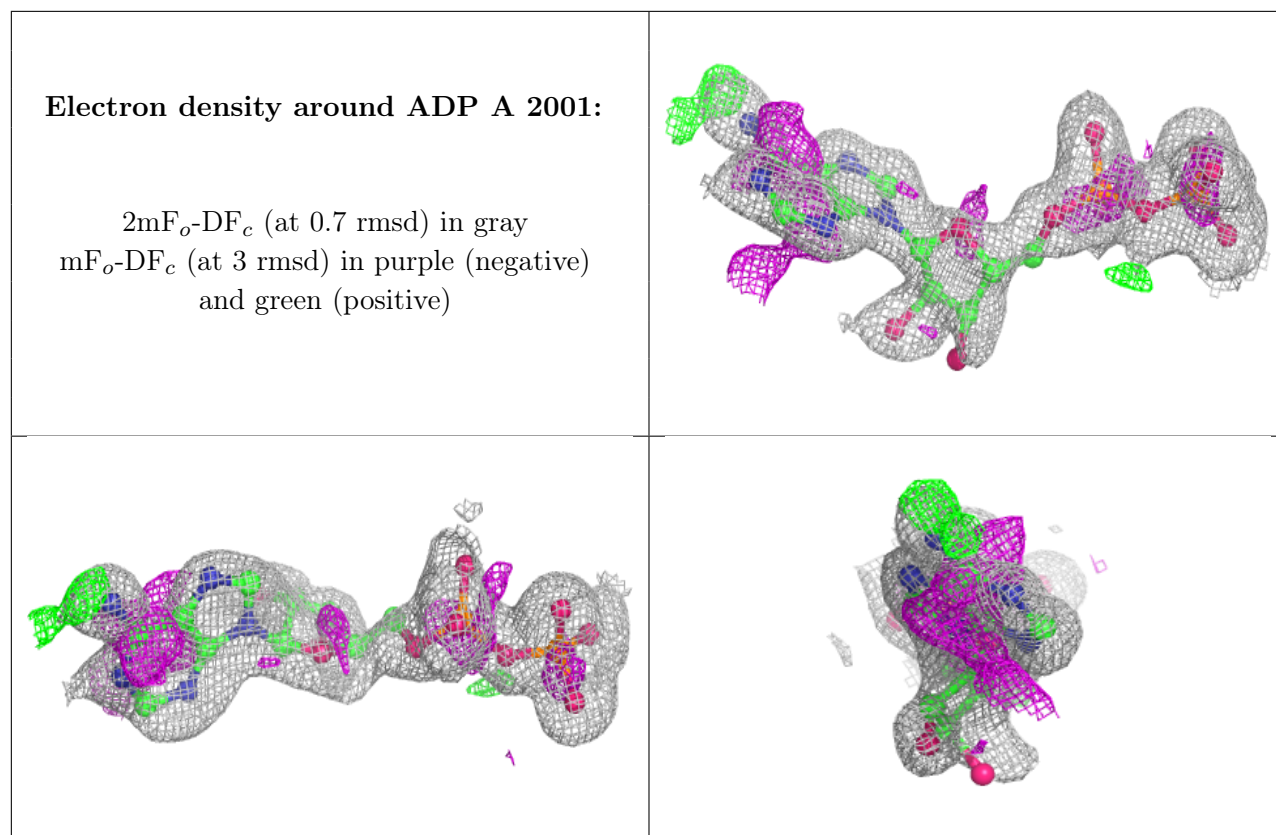
There are no monosaccharides in this entry.

6.4 Ligands [i](#)

In the following table, the Atoms column lists the number of modelled atoms in the group and the number defined in the chemical component dictionary. The B-factors column lists the minimum, median, 95th percentile and maximum values of B factors of atoms in the group. The column labelled 'Q< 0.9' lists the number of atoms with occupancy less than 0.9.

Mol	Type	Chain	Res	Atoms	RSCC	RSR	B-factors(\AA^2)	Q<0.9
3	ADP	A	2001	27/27	0.90	0.14	22,45,66,74	0

The following is a graphical depiction of the model fit to experimental electron density of all instances of the Ligand of Interest. In addition, ligands with molecular weight > 250 and outliers as shown on the geometry validation Tables will also be included. Each fit is shown from different orientation to approximate a three-dimensional view.



6.5 Other polymers [i](#)

There are no such residues in this entry.