



Full wwPDB X-ray Structure Validation Report ⓘ

Sep 17, 2023 – 12:06 AM EDT

PDB ID : 4RRY
Title : Crystal Structure of Apo Murine H90W Cyclooxygenase-2
Authors : Xu, S.; Blobaum, A.L.; Banerjee, S.; Marnett, L.J.
Deposited on : 2014-11-06
Resolution : 2.43 Å(reported)

This is a Full wwPDB X-ray Structure Validation Report for a publicly released PDB entry.

We welcome your comments at validation@mail.wwpdb.org

A user guide is available at

<https://www.wwpdb.org/validation/2017/XrayValidationReportHelp>

with specific help available everywhere you see the ⓘ symbol.

The types of validation reports are described at

<http://www.wwpdb.org/validation/2017/FAQs#types>.

The following versions of software and data (see [references ⓘ](#)) were used in the production of this report:

MolProbity : 4.02b-467
Mogul : 1.8.5 (274361), CSD as541be (2020)
Xtriage (Phenix) : 1.13
EDS : 2.35.1
buster-report : 1.1.7 (2018)
Percentile statistics : 20191225.v01 (using entries in the PDB archive December 25th 2019)
Refmac : 5.8.0158
CCP4 : 7.0.044 (Gargrove)
Ideal geometry (proteins) : Engh & Huber (2001)
Ideal geometry (DNA, RNA) : Parkinson et al. (1996)
Validation Pipeline (wwPDB-VP) : 2.35.1

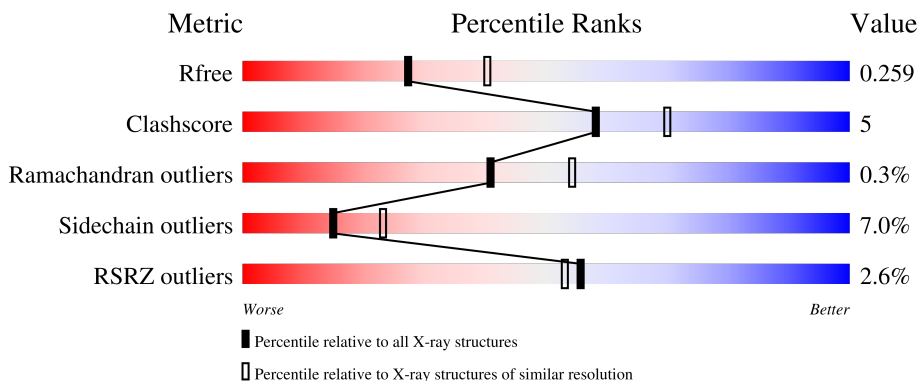
1 Overall quality at a glance

The following experimental techniques were used to determine the structure:

X-RAY DIFFRACTION

The reported resolution of this entry is 2.43 Å.

Percentile scores (ranging between 0-100) for global validation metrics of the entry are shown in the following graphic. The table shows the number of entries on which the scores are based.






Metric	Whole archive (#Entries)	Similar resolution (#Entries, resolution range(Å))
R_{free}	130704	4647 (2.44-2.40)
Clashscore	141614	5161 (2.44-2.40)
Ramachandran outliers	138981	5073 (2.44-2.40)
Sidechain outliers	138945	5074 (2.44-2.40)
RSRZ outliers	127900	4543 (2.44-2.40)

The table below summarises the geometric issues observed across the polymeric chains and their fit to the electron density. The red, orange, yellow and green segments of the lower bar indicate the fraction of residues that contain outliers for ≥ 3 , 2, 1 and 0 types of geometric quality criteria respectively. A grey segment represents the fraction of residues that are not modelled. The numeric value for each fraction is indicated below the corresponding segment, with a dot representing fractions $\leq 5\%$. The upper red bar (where present) indicates the fraction of residues that have poor fit to the electron density. The numeric value is given above the bar.

Mol	Chain	Length	Quality of chain
1	A	587	 3% 79% 13% • 6%
1	B	587	 2% 80% 12% • 6%
1	C	587	 4% 78% 14% • 6%
1	D	587	 2% 80% 12% • 6%
2	E	2	 50% 50%

Continued on next page...

Continued from previous page...

Mol	Chain	Length	Quality of chain
2	F	2	 100%
2	G	2	 100%
2	H	2	 100%

The following table lists non-polymeric compounds, carbohydrate monomers and non-standard residues in protein, DNA, RNA chains that are outliers for geometric or electron-density-fit criteria:

Mol	Type	Chain	Res	Chirality	Geometry	Clashes	Electron density
4	BOG	A	706	-	-	-	X
4	BOG	C	706	-	-	-	X
4	BOG	D	705	-	-	-	X

2 Entry composition [i](#)

There are 5 unique types of molecules in this entry. The entry contains 18993 atoms, of which 0 are hydrogens and 0 are deuteriums.

In the tables below, the ZeroOcc column contains the number of atoms modelled with zero occupancy, the AltConf column contains the number of residues with at least one atom in alternate conformation and the Trace column contains the number of residues modelled with at most 2 atoms.

- Molecule 1 is a protein called Prostaglandin G/H synthase 2.

Mol	Chain	Residues	Atoms					ZeroOcc	AltConf	Trace
			Total	C	N	O	S			
1	A	552	4478	2890	749	814	25	0	0	0
1	B	552	4478	2890	749	814	25	0	0	0
1	C	552	4478	2890	749	814	25	0	0	0
1	D	552	4478	2890	749	814	25	0	0	0

There are 4 discrepancies between the modelled and reference sequences:

Chain	Residue	Modelled	Actual	Comment	Reference
A	90	TRP	HIS	engineered mutation	UNP Q05769
B	90	TRP	HIS	engineered mutation	UNP Q05769
C	90	TRP	HIS	engineered mutation	UNP Q05769
D	90	TRP	HIS	engineered mutation	UNP Q05769

- Molecule 2 is an oligosaccharide called 2-acetamido-2-deoxy-beta-D-glucopyranose-(1-4)-2-acetamido-2-deoxy-beta-D-glucopyranose.



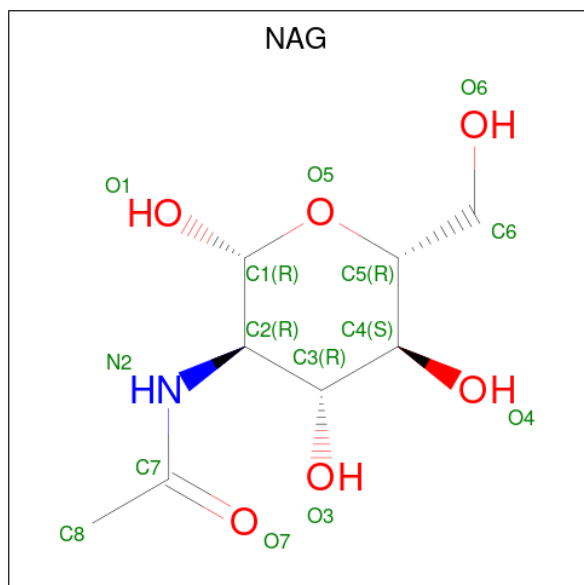
Mol	Chain	Residues	Atoms				ZeroOcc	AltConf	Trace
			Total	C	N	O			
2	E	2	28	16	2	10	0	0	0
2	F	2	28	16	2	10	0	0	0
2	G	2	28	16	2	10	0	0	0

Continued on next page...

Continued from previous page...

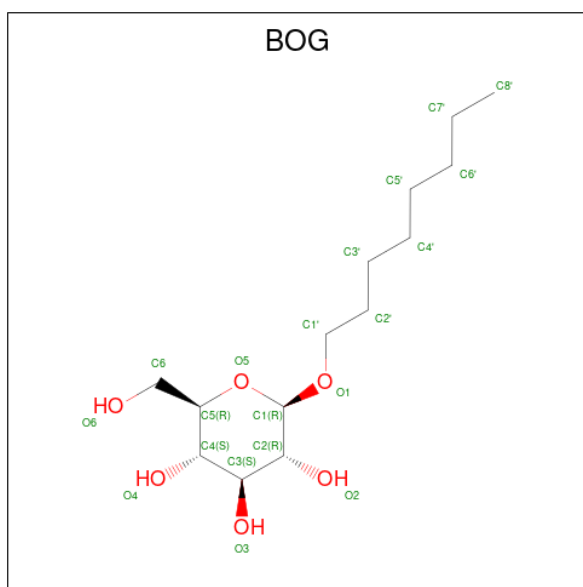
Mol	Chain	Residues	Atoms				ZeroOcc	AltConf	Trace
			Total	C	N	O			
2	H	2	28	16	2	10	0	0	0

- Molecule 3 is 2-acetamido-2-deoxy-beta-D-glucopyranose (three-letter code: NAG) (formula: $C_8H_{15}NO_6$).



Mol	Chain	Residues	Atoms				ZeroOcc	AltConf
			Total	C	N	O		
3	A	1	14	8	1	5	0	0
3	A	1	14	8	1	5	0	0
3	B	1	14	8	1	5	0	0
3	B	1	14	8	1	5	0	0
3	C	1	14	8	1	5	0	0
3	C	1	14	8	1	5	0	0
3	D	1	14	8	1	5	0	0
3	D	1	14	8	1	5	0	0

- Molecule 4 is octyl beta-D-glucopyranoside (three-letter code: BOG) (formula: $C_{14}H_{28}O_6$).



Mol	Chain	Residues	Atoms	ZeroOcc	AltConf
4	A	1	Total C O 20 14 6	0	0
4	A	1	Total C O 20 14 6	0	0
4	B	1	Total C O 20 14 6	0	0
4	C	1	Total C O 20 14 6	0	0
4	C	1	Total C O 20 14 6	0	0
4	D	1	Total C O 20 14 6	0	0

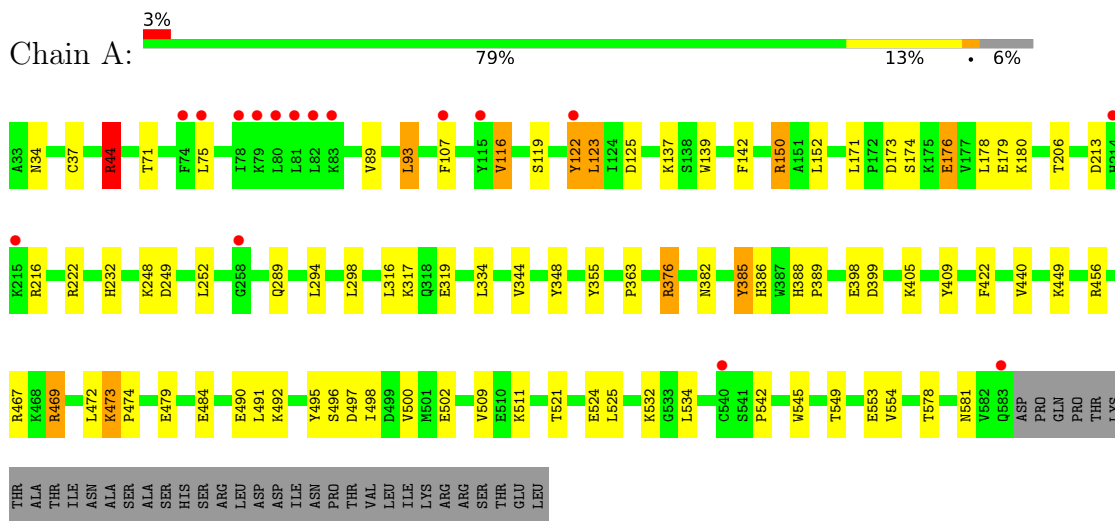
- Molecule 5 is water.

Mol	Chain	Residues	Atoms	ZeroOcc	AltConf
5	A	214	Total O 214 214	0	0
5	B	212	Total O 212 212	0	0
5	C	145	Total O 145 145	0	0
5	D	166	Total O 166 166	0	0

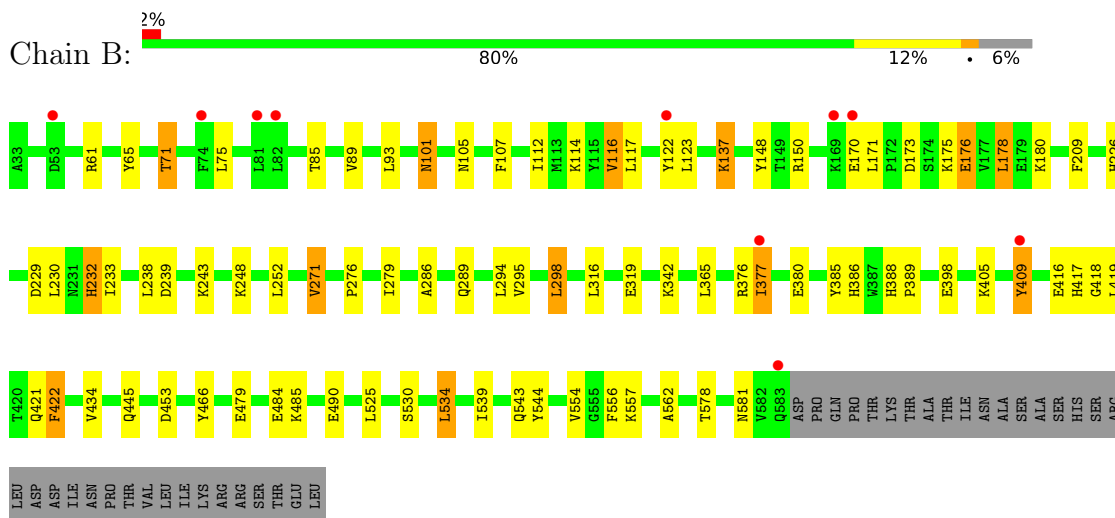
3 Residue-property plots i

These plots are drawn for all protein, RNA, DNA and oligosaccharide chains in the entry. The first graphic for a chain summarises the proportions of the various outlier classes displayed in the second graphic. The second graphic shows the sequence view annotated by issues in geometry and electron density. Residues are color-coded according to the number of geometric quality criteria for which they contain at least one outlier: green = 0, yellow = 1, orange = 2 and red = 3 or more. A red dot above a residue indicates a poor fit to the electron density ($RSRZ > 2$). Stretches of 2 or more consecutive residues without any outlier are shown as a green connector. Residues present in the sample, but not in the model, are shown in grey.

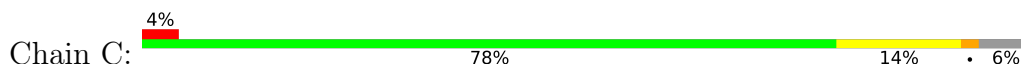
- Molecule 1: Prostaglandin G/H synthase 2

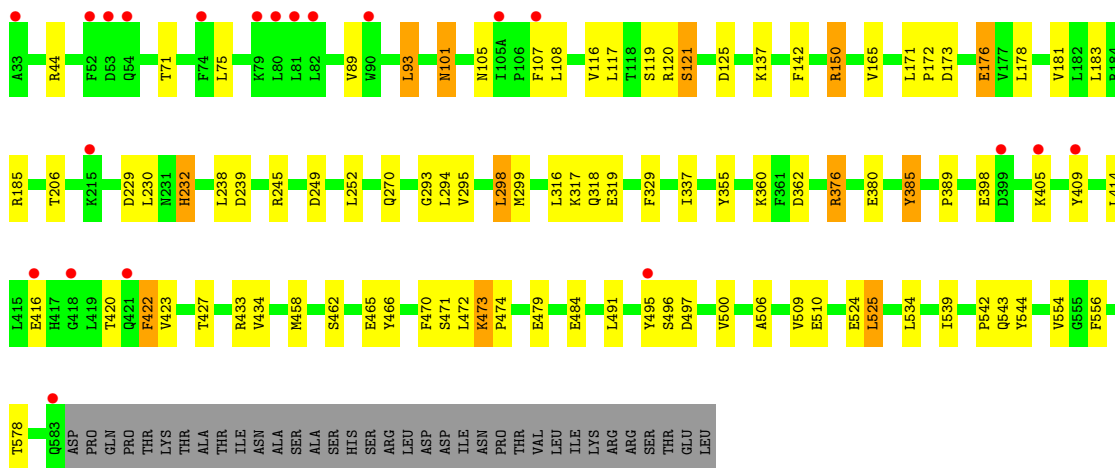


- Molecule 1: Prostaglandin G/H synthase 2

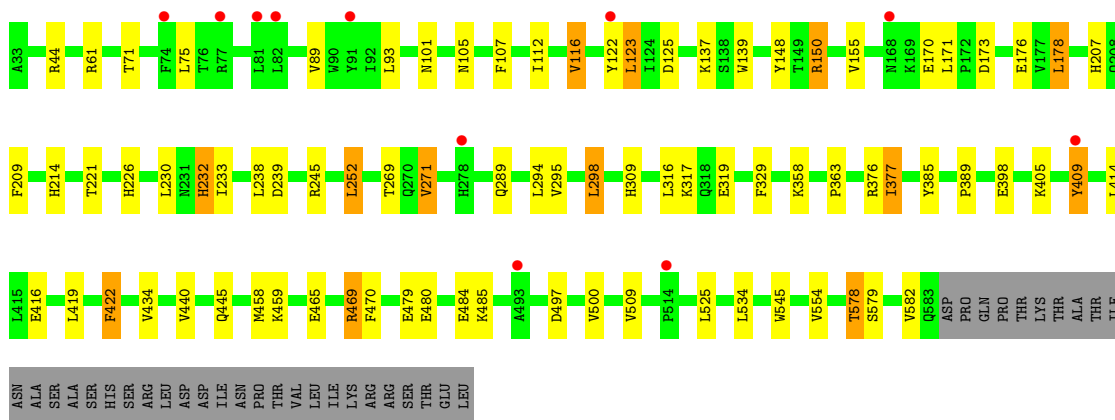
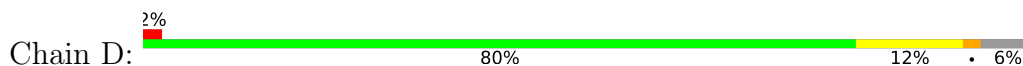


- Molecule 1: Prostaglandin G/H synthase 2





- Molecule 1: Prostaglandin G/H synthase 2



- Molecule 2: 2-acetamido-2-deoxy-beta-D-glucopyranose-(1-4)-2-acetamido-2-deoxy-beta-D-glucopyranose



- Molecule 2: 2-acetamido-2-deoxy-beta-D-glucopyranose-(1-4)-2-acetamido-2-deoxy-beta-D-glucopyranose



- Molecule 2: 2-acetamido-2-deoxy-beta-D-glucopyranose-(1-4)-2-acetamido-2-deoxy-beta-D-glucopyranose

Chain G:  100%

3AG1
3AG2

- Molecule 2: 2-acetamido-2-deoxy-beta-D-glucopyranose-(1-4)-2-acetamido-2-deoxy-beta-D-glucopyranose

Chain H:  100%

3AG1
3AG2

4 Data and refinement statistics

Property	Value	Source
Space group	P 21 21 2	Depositor
Cell constants a, b, c, α , β , γ	181.19Å 134.47Å 121.89Å 90.00° 90.00° 90.00°	Depositor
Resolution (Å)	49.36 – 2.43 49.36 – 2.43	Depositor EDS
% Data completeness (in resolution range)	99.6 (49.36-2.43) 87.3 (49.36-2.43)	Depositor EDS
R_{merge}	0.11	Depositor
R_{sym}	(Not available)	Depositor
$\langle I/\sigma(I) \rangle$ ¹	1.99 (at 2.42Å)	Xtrriage
Refinement program	PHENIX (phenix.refine: 1.8.4_1496)	Depositor
R, R_{free}	0.209 , 0.259 0.212 , 0.259	Depositor DCC
R_{free} test set	3370 reflections (3.00%)	wwPDB-VP
Wilson B-factor (Å ²)	33.9	Xtrriage
Anisotropy	0.646	Xtrriage
Bulk solvent k_{sol} (e/Å ³), B_{sol} (Å ²)	0.31 , 41.6	EDS
L-test for twinning ²	$\langle L \rangle = 0.49$, $\langle L^2 \rangle = 0.32$	Xtrriage
Estimated twinning fraction	No twinning to report.	Xtrriage
F_o, F_c correlation	0.94	EDS
Total number of atoms	18993	wwPDB-VP
Average B, all atoms (Å ²)	48.0	wwPDB-VP

Xtrriage's analysis on translational NCS is as follows: *The analyses of the Patterson function reveals a significant off-origin peak that is 48.99 % of the origin peak, indicating pseudo-translational symmetry. The chance of finding a peak of this or larger height randomly in a structure without pseudo-translational symmetry is equal to 7.9529e-05. The detected translational NCS is most likely also responsible for the elevated intensity ratio.*

¹Intensities estimated from amplitudes.

²Theoretical values of $\langle |L| \rangle$, $\langle L^2 \rangle$ for acentric reflections are 0.5, 0.333 respectively for untwinned datasets, and 0.375, 0.2 for perfectly twinned datasets.

5 Model quality [i](#)

5.1 Standard geometry [i](#)

Bond lengths and bond angles in the following residue types are not validated in this section: NAG, BOG

The Z score for a bond length (or angle) is the number of standard deviations the observed value is removed from the expected value. A bond length (or angle) with $|Z| > 5$ is considered an outlier worth inspection. RMSZ is the root-mean-square of all Z scores of the bond lengths (or angles).

Mol	Chain	Bond lengths		Bond angles	
		RMSZ	# Z >5	RMSZ	# Z >5
1	A	0.31	0/4606	0.46	1/6247 (0.0%)
1	B	0.30	0/4606	0.45	0/6247
1	C	0.33	0/4606	0.46	0/6247
1	D	0.30	0/4606	0.46	0/6247
All	All	0.31	0/18424	0.46	1/24988 (0.0%)

There are no bond length outliers.

All (1) bond angle outliers are listed below:

Mol	Chain	Res	Type	Atoms	Z	Observed(°)	Ideal(°)
1	A	44	ARG	NE-CZ-NH1	5.69	123.14	120.30

There are no chirality outliers.

There are no planarity outliers.

5.2 Too-close contacts [i](#)

In the following table, the Non-H and H(model) columns list the number of non-hydrogen atoms and hydrogen atoms in the chain respectively. The H(added) column lists the number of hydrogen atoms added and optimized by MolProbity. The Clashes column lists the number of clashes within the asymmetric unit, whereas Symm-Clashes lists symmetry-related clashes.

Mol	Chain	Non-H	H(model)	H(added)	Clashes	Symm-Clashes
1	A	4478	0	4376	46	0
1	B	4478	0	4376	42	0
1	C	4478	0	4376	52	0
1	D	4478	0	4376	41	0
2	E	28	0	25	1	0
2	F	28	0	25	0	0

Continued on next page...

Continued from previous page...

Mol	Chain	Non-H	H(model)	H(added)	Clashes	Symm-Clashes
2	G	28	0	25	0	0
2	H	28	0	25	0	0
3	A	28	0	26	0	0
3	B	28	0	26	0	0
3	C	28	0	26	0	0
3	D	28	0	26	0	0
4	A	40	0	56	3	0
4	B	20	0	28	2	0
4	C	40	0	56	5	0
4	D	20	0	28	1	0
5	A	214	0	0	5	0
5	B	212	0	0	5	0
5	C	145	0	0	0	0
5	D	166	0	0	6	0
All	All	18993	0	17876	173	0

The all-atom clashscore is defined as the number of clashes found per 1000 atoms (including hydrogen atoms). The all-atom clashscore for this structure is 5.

All (173) close contacts within the same asymmetric unit are listed below, sorted by their clash magnitude.

Atom-1	Atom-2	Interatomic distance (Å)	Clash overlap (Å)
1:C:120:ARG:HD3	4:C:706:BOG:O2	1.73	0.88
1:A:44:ARG:HH11	1:A:44:ARG:HG2	1.46	0.80
1:B:150:ARG:HD3	5:B:939:HOH:O	1.82	0.79
1:B:294:LEU:HD22	1:B:409:TYR:HD1	1.49	0.76
1:A:123:LEU:O	1:A:469:ARG:NH2	2.20	0.74
1:C:319:GLU:HG3	1:C:554:VAL:HG11	1.70	0.72
1:C:543:GLN:NE2	1:D:125:ASP:OD1	2.22	0.71
1:C:172:PRO:HG2	1:C:495:TYR:CZ	2.26	0.71
1:D:150:ARG:NH2	1:D:458:MET:O	2.25	0.69
1:B:319:GLU:HG3	1:B:554:VAL:HG11	1.75	0.69
1:B:479:GLU:OE2	1:B:485:LYS:HG2	1.94	0.68
1:C:116:VAL:O	1:C:120:ARG:HG2	1.94	0.66
1:A:319:GLU:HG3	1:A:554:VAL:HG11	1.77	0.65
1:D:479:GLU:CD	5:D:879:HOH:O	2.36	0.63
1:A:142:PHE:O	1:A:376:ARG:NH2	2.21	0.63
1:C:173:ASP:HB3	1:C:176:GLU:HB2	1.80	0.62
1:D:319:GLU:HG3	1:D:554:VAL:HG11	1.81	0.62
1:D:389:PRO:HG2	1:D:434:VAL:HA	1.81	0.61
1:D:485:LYS:NZ	5:D:879:HOH:O	2.32	0.61

Continued on next page...

Continued from previous page...

Atom-1	Atom-2	Interatomic distance (Å)	Clash overlap (Å)
1:C:150:ARG:NH2	1:C:458:MET:O	2.33	0.61
1:A:125:ASP:OD1	1:B:543:GLN:NE2	2.30	0.60
1:D:123:LEU:O	1:D:469:ARG:NH2	2.28	0.60
1:B:226:HIS:HA	1:B:377:ILE:HD13	1.83	0.60
1:D:245:ARG:HD3	1:D:329:PHE:CD1	2.36	0.60
1:C:116:VAL:HB	4:C:706:BOG:H2'2	1.83	0.60
1:B:294:LEU:HD22	1:B:409:TYR:CD1	2.34	0.59
1:C:44:ARG:HG2	1:C:44:ARG:HH11	1.68	0.59
1:B:175:LYS:NZ	5:B:822:HOH:O	2.34	0.59
1:A:294:LEU:HD22	1:A:409:TYR:HD1	1.67	0.58
1:C:294:LEU:HD22	1:C:409:TYR:HD1	1.67	0.58
1:D:294:LEU:HD22	1:D:409:TYR:HD1	1.67	0.58
1:D:209:PHE:HB2	1:D:377:ILE:HD12	1.85	0.58
1:C:172:PRO:CG	1:C:495:TYR:CE1	2.86	0.58
1:C:470:PHE:O	1:C:471:SER:HB2	2.04	0.57
1:C:542:PRO:O	1:D:61:ARG:NH1	2.37	0.57
1:A:495:TYR:O	1:A:496:SER:HB3	2.04	0.56
1:B:389:PRO:HG2	1:B:434:VAL:HA	1.89	0.55
1:B:85:THR:O	1:B:89:VAL:HG23	2.06	0.55
1:D:214:HIS:ND1	5:D:946:HOH:O	2.33	0.55
1:C:500:VAL:HG12	1:C:500:VAL:O	2.07	0.55
1:C:543:GLN:HE22	1:D:44:ARG:HH22	1.54	0.55
1:D:479:GLU:HG2	1:D:480:GLU:N	2.22	0.55
1:C:472:LEU:HD21	1:C:524:GLU:HG3	1.87	0.54
1:D:178:LEU:HD11	1:D:445:GLN:HB2	1.89	0.54
1:A:150:ARG:NH1	1:A:152:LEU:O	2.40	0.54
1:C:495:TYR:O	1:C:497:ASP:N	2.41	0.54
1:B:557:LYS:NZ	5:B:965:HOH:O	2.29	0.54
1:A:472:LEU:HD21	1:A:524:GLU:HG3	1.90	0.54
1:A:93:LEU:HD21	4:A:706:BOG:H4'1	1.89	0.54
1:A:216:ARG:NH1	2:E:2:NAG:O7	2.42	0.53
1:C:142:PHE:O	1:C:376:ARG:NH2	2.25	0.53
1:B:116:VAL:HG12	4:B:705:BOG:H4'2	1.91	0.52
1:B:230:LEU:HD13	1:B:233:ILE:HD12	1.90	0.52
1:C:294:LEU:HD22	1:C:409:TYR:CD1	2.44	0.52
1:A:456:ARG:NH2	1:A:502:GLU:OE1	2.39	0.52
1:A:213:ASP:HB2	1:A:222:ARG:HG3	1.91	0.52
1:C:389:PRO:HG2	1:C:434:VAL:HA	1.92	0.51
1:D:44:ARG:N	5:D:887:HOH:O	2.35	0.51
1:A:389:PRO:HD3	1:A:440:VAL:HG22	1.92	0.51
1:B:150:ARG:NH2	5:B:811:HOH:O	2.29	0.51

Continued on next page...

Continued from previous page...

Atom-1	Atom-2	Interatomic distance (Å)	Clash overlap (Å)
1:C:423:VAL:O	1:C:427:THR:OG1	2.25	0.51
1:D:101:ASN:O	1:D:105:ASN:ND2	2.39	0.51
1:B:209:PHE:O	1:B:377:ILE:HD12	2.11	0.51
1:C:380:GLU:HG2	1:C:466:TYR:CE1	2.46	0.50
1:C:206:THR:HG21	1:C:385:TYR:CE1	2.47	0.50
1:C:44:ARG:NH2	1:C:125:ASP:OD1	2.44	0.50
1:A:497:ASP:HB3	1:A:500:VAL:HG23	1.93	0.50
1:A:44:ARG:HH11	1:A:44:ARG:CG	2.21	0.49
1:B:230:LEU:HA	1:B:232:HIS:CE1	2.47	0.49
1:A:549:THR:OG1	1:B:137:LYS:NZ	2.44	0.49
1:A:553:GLU:HG3	5:A:930:HOH:O	2.13	0.49
1:A:294:LEU:HD22	1:A:409:TYR:CD1	2.47	0.49
1:C:172:PRO:HG2	1:C:495:TYR:CE1	2.48	0.49
1:C:172:PRO:CG	1:C:495:TYR:CZ	2.95	0.49
1:A:116:VAL:HB	4:A:706:BOG:H2'2	1.95	0.48
1:D:230:LEU:HD13	1:D:233:ILE:HD12	1.94	0.48
1:D:497:ASP:HB3	1:D:500:VAL:HG23	1.96	0.48
1:B:226:HIS:ND1	1:B:377:ILE:HG12	2.29	0.48
1:D:294:LEU:HD22	1:D:409:TYR:CD1	2.47	0.48
1:C:360:LYS:HE2	1:C:362:ASP:HB2	1.96	0.48
1:B:380:GLU:HG2	1:B:466:TYR:CE1	2.49	0.48
1:D:207:HIS:NE2	5:D:962:HOH:O	2.35	0.47
1:B:342:LYS:HG2	1:B:562:ALA:HB3	1.95	0.47
1:D:269:THR:OG1	1:D:271:VAL:HG13	2.14	0.47
1:B:417:HIS:O	1:B:421:GLN:HB2	2.15	0.47
1:B:89:VAL:HG11	4:B:705:BOG:H3'2	1.97	0.47
1:A:249:ASP:OD1	1:A:317:LYS:HE3	2.15	0.47
1:B:180:LYS:HB3	1:B:490:GLU:HG2	1.96	0.47
1:B:243:LYS:HB3	1:B:271:VAL:HG12	1.96	0.47
1:D:173:ASP:HB3	1:D:176:GLU:HB2	1.97	0.46
1:B:112:ILE:O	1:B:116:VAL:HG13	2.15	0.46
1:B:295:VAL:HB	1:B:298:LEU:HD22	1.96	0.46
1:A:467:ARG:NH1	1:A:521:THR:OG1	2.49	0.46
1:A:179:GLU:OE1	5:A:921:HOH:O	2.21	0.46
1:A:492:LYS:NZ	5:A:973:HOH:O	2.49	0.46
1:B:178:LEU:HD11	1:B:445:GLN:HB2	1.97	0.46
1:C:101:ASN:O	1:C:105:ASN:ND2	2.40	0.46
1:C:249:ASP:OD1	1:C:317:LYS:HE3	2.15	0.46
1:A:542:PRO:O	1:B:61:ARG:NH1	2.49	0.45
1:D:112:ILE:O	1:D:116:VAL:HG13	2.17	0.45
1:B:418:GLY:O	1:B:422:PHE:HB2	2.17	0.45

Continued on next page...

Continued from previous page...

Atom-1	Atom-2	Interatomic distance (Å)	Clash overlap (Å)
1:C:543:GLN:HE22	1:D:44:ARG:NH2	2.15	0.45
1:B:271:VAL:HG22	1:B:286:ALA:HB1	1.98	0.44
1:B:276:PRO:HG2	1:B:279:ILE:HG12	1.98	0.44
1:D:470:PHE:CG	1:D:525:LEU:HD22	2.53	0.44
1:B:101:ASN:O	1:B:105:ASN:ND2	2.37	0.44
1:D:89:VAL:HG11	4:D:705:BOG:H3'2	1.99	0.44
1:B:148:TYR:CD1	1:B:377:ILE:HG13	2.53	0.44
1:C:117:LEU:O	1:C:121:SER:OG	2.35	0.44
1:C:462:SER:OG	1:C:465:GLU:HG2	2.17	0.44
1:A:491:LEU:HD11	1:A:509:VAL:HG11	1.99	0.44
1:A:34:ASN:HB3	1:A:37:CYS:SG	2.58	0.43
1:A:174:SER:OG	1:A:449:LYS:NZ	2.28	0.43
1:C:473:LYS:HA	1:C:474:PRO:HD3	1.88	0.43
1:C:495:TYR:O	1:C:496:SER:C	2.54	0.43
1:A:344:VAL:O	1:A:348:TYR:HB3	2.18	0.43
1:B:539:ILE:HA	1:B:544:TYR:HB3	2.00	0.43
1:C:185:ARG:NH2	4:C:705:BOG:H4'1	2.33	0.43
1:C:89:VAL:HG11	4:C:706:BOG:H3'2	2.00	0.43
1:C:119:SER:O	1:C:120:ARG:C	2.55	0.43
1:D:155:VAL:HB	1:D:459:LYS:HE2	2.00	0.43
1:A:382:ASN:OD1	1:A:386:HIS:HE1	2.02	0.43
1:D:226:HIS:HA	1:D:377:ILE:HD13	2.00	0.43
1:D:389:PRO:HD3	1:D:440:VAL:HG22	2.01	0.43
1:C:470:PHE:CG	1:C:525:LEU:HD22	2.54	0.42
1:D:363:PRO:HG2	1:D:545:TRP:CD2	2.53	0.42
1:A:511:LYS:O	5:A:828:HOH:O	2.21	0.42
1:B:173:ASP:HB3	1:B:176:GLU:HB2	2.01	0.42
1:D:479:GLU:HG2	1:D:480:GLU:H	1.83	0.42
1:D:578:THR:HG22	1:D:579:SER:H	1.84	0.42
1:B:65:TYR:O	1:B:71:THR:HG23	2.20	0.42
1:D:465:GLU:OE1	5:D:931:HOH:O	2.22	0.42
1:A:44:ARG:NH2	1:A:125:ASP:OD1	2.48	0.42
1:A:334:LEU:HD23	1:A:334:LEU:HA	1.85	0.42
1:C:414:LEU:HA	1:C:422:PHE:CE1	2.54	0.42
1:D:44:ARG:HD2	1:D:469:ARG:HE	1.84	0.42
1:A:93:LEU:HB3	1:A:355:TYR:CD1	2.54	0.42
1:C:229:ASP:HB3	1:D:139:TRP:CZ2	2.54	0.42
1:C:295:VAL:HB	1:C:298:LEU:HD22	2.01	0.42
4:C:705:BOG:H7'1	4:C:705:BOG:H4'2	1.78	0.42
1:A:473:LYS:HA	1:A:474:PRO:HD3	1.91	0.42
1:C:539:ILE:HA	1:C:544:TYR:HB3	2.01	0.42

Continued on next page...

Continued from previous page...

Atom-1	Atom-2	Interatomic distance (Å)	Clash overlap (Å)
1:A:388:HIS:N	1:A:389:PRO:HD2	2.34	0.42
1:C:230:LEU:HG	1:C:337:ILE:HG12	2.02	0.42
1:A:180:LYS:HD3	1:A:490:GLU:HG3	2.02	0.42
1:A:89:VAL:HG11	4:A:706:BOG:H3'2	2.02	0.41
1:A:363:PRO:HG2	1:A:545:TRP:CD2	2.55	0.41
1:A:456:ARG:HA	5:A:949:HOH:O	2.21	0.41
1:B:114:LYS:HE2	1:B:365:LEU:O	2.19	0.41
1:D:414:LEU:HA	1:D:422:PHE:CE1	2.55	0.41
1:C:172:PRO:HG3	1:C:495:TYR:CD1	2.54	0.41
1:D:295:VAL:HB	1:D:298:LEU:HD22	2.01	0.41
1:B:386:HIS:HB3	1:B:388:HIS:CE1	2.55	0.41
1:C:245:ARG:HD3	1:C:329:PHE:CD1	2.56	0.41
1:B:148:TYR:HD1	1:B:377:ILE:HG13	1.85	0.41
1:C:506:ALA:O	1:C:510:GLU:HB2	2.21	0.41
1:A:206:THR:HG21	1:A:385:TYR:CE1	2.54	0.41
1:B:530:SER:O	1:B:534:LEU:HD22	2.20	0.41
1:C:181:VAL:HG21	1:C:491:LEU:HD21	2.01	0.41
1:A:173:ASP:HB3	1:A:176:GLU:HB2	2.03	0.41
1:A:386:HIS:HB3	1:A:388:HIS:CE1	2.56	0.41
1:D:252:LEU:HD22	1:D:309:HIS:CD2	2.56	0.41
1:B:453:ASP:OD2	5:B:867:HOH:O	2.22	0.41
1:C:183:LEU:HD23	1:C:183:LEU:HA	1.93	0.41
1:C:389:PRO:HB2	1:C:433:ARG:O	2.21	0.41
1:D:230:LEU:HA	1:D:232:HIS:CE1	2.56	0.41
1:A:497:ASP:OD1	1:A:498:ILE:N	2.53	0.40
1:C:230:LEU:HD22	1:C:232:HIS:HE1	1.86	0.40
1:D:148:TYR:CZ	1:D:221:THR:HB	2.56	0.40
1:A:139:TRP:CZ2	1:B:229:ASP:HB3	2.57	0.40
1:C:93:LEU:HB3	1:C:355:TYR:CD1	2.57	0.40
1:C:293:GLY:HA2	1:C:299:MET:HE3	2.03	0.40
1:A:119:SER:O	1:A:122:TYR:HD1	2.04	0.40

There are no symmetry-related clashes.

5.3 Torsion angles

5.3.1 Protein backbone

In the following table, the Percentiles column shows the percent Ramachandran outliers of the chain as a percentile score with respect to all X-ray entries followed by that with respect to entries of similar resolution.

The Analysed column shows the number of residues for which the backbone conformation was analysed, and the total number of residues.

Mol	Chain	Analysed	Favoured	Allowed	Outliers	Percentiles	
1	A	550/587 (94%)	528 (96%)	21 (4%)	1 (0%)	47	61
1	B	550/587 (94%)	534 (97%)	14 (2%)	2 (0%)	34	47
1	C	550/587 (94%)	523 (95%)	24 (4%)	3 (0%)	29	40
1	D	550/587 (94%)	533 (97%)	16 (3%)	1 (0%)	47	61
All	All	2200/2348 (94%)	2118 (96%)	75 (3%)	7 (0%)	41	54

All (7) Ramachandran outliers are listed below:

Mol	Chain	Res	Type
1	C	416	GLU
1	A	398	GLU
1	D	398	GLU
1	C	398	GLU
1	B	398	GLU
1	B	416	GLU
1	C	420	THR

5.3.2 Protein sidechains [i](#)

In the following table, the Percentiles column shows the percent sidechain outliers of the chain as a percentile score with respect to all X-ray entries followed by that with respect to entries of similar resolution.

The Analysed column shows the number of residues for which the sidechain conformation was analysed, and the total number of residues.

Mol	Chain	Analysed	Rotameric	Outliers	Percentiles	
1	A	493/525 (94%)	460 (93%)	33 (7%)	16	25
1	B	493/525 (94%)	457 (93%)	36 (7%)	14	21
1	C	493/525 (94%)	460 (93%)	33 (7%)	16	25
1	D	493/525 (94%)	457 (93%)	36 (7%)	14	21
All	All	1972/2100 (94%)	1834 (93%)	138 (7%)	15	23

All (138) residues with a non-rotameric sidechain are listed below:

Mol	Chain	Res	Type
1	A	44	ARG

Continued on next page...

Continued from previous page...

Mol	Chain	Res	Type
1	A	71	THR
1	A	75	LEU
1	A	93	LEU
1	A	107	PHE
1	A	116	VAL
1	A	122	TYR
1	A	123	LEU
1	A	137	LYS
1	A	150	ARG
1	A	171	LEU
1	A	176	GLU
1	A	178	LEU
1	A	232	HIS
1	A	248	LYS
1	A	252	LEU
1	A	289	GLN
1	A	298	LEU
1	A	316	LEU
1	A	376	ARG
1	A	385	TYR
1	A	399	ASP
1	A	405	LYS
1	A	422	PHE
1	A	469	ARG
1	A	473	LYS
1	A	479	GLU
1	A	484	GLU
1	A	525	LEU
1	A	532	LYS
1	A	534	LEU
1	A	578	THR
1	A	581	ASN
1	B	71	THR
1	B	75	LEU
1	B	93	LEU
1	B	101	ASN
1	B	107	PHE
1	B	116	VAL
1	B	117	LEU
1	B	122	TYR
1	B	123	LEU
1	B	137	LYS

Continued on next page...

Continued from previous page...

Mol	Chain	Res	Type
1	B	170	GLU
1	B	171	LEU
1	B	176	GLU
1	B	178	LEU
1	B	232	HIS
1	B	238	LEU
1	B	239	ASP
1	B	248	LYS
1	B	252	LEU
1	B	271	VAL
1	B	289	GLN
1	B	298	LEU
1	B	316	LEU
1	B	376	ARG
1	B	377	ILE
1	B	385	TYR
1	B	405	LYS
1	B	409	TYR
1	B	419	LEU
1	B	422	PHE
1	B	484	GLU
1	B	525	LEU
1	B	534	LEU
1	B	556	PHE
1	B	578	THR
1	B	581	ASN
1	C	71	THR
1	C	75	LEU
1	C	93	LEU
1	C	101	ASN
1	C	107	PHE
1	C	108	LEU
1	C	121	SER
1	C	137	LYS
1	C	150	ARG
1	C	165	VAL
1	C	171	LEU
1	C	176	GLU
1	C	178	LEU
1	C	232	HIS
1	C	238	LEU
1	C	239	ASP

Continued on next page...

Continued from previous page...

Mol	Chain	Res	Type
1	C	252	LEU
1	C	270	GLN
1	C	298	LEU
1	C	316	LEU
1	C	318	GLN
1	C	376	ARG
1	C	385	TYR
1	C	405	LYS
1	C	422	PHE
1	C	473	LYS
1	C	479	GLU
1	C	484	GLU
1	C	509	VAL
1	C	525	LEU
1	C	534	LEU
1	C	556	PHE
1	C	578	THR
1	D	71	THR
1	D	75	LEU
1	D	93	LEU
1	D	107	PHE
1	D	116	VAL
1	D	122	TYR
1	D	123	LEU
1	D	137	LYS
1	D	150	ARG
1	D	170	GLU
1	D	171	LEU
1	D	178	LEU
1	D	232	HIS
1	D	238	LEU
1	D	239	ASP
1	D	252	LEU
1	D	271	VAL
1	D	289	GLN
1	D	298	LEU
1	D	316	LEU
1	D	317	LYS
1	D	358	LYS
1	D	376	ARG
1	D	377	ILE
1	D	385	TYR

Continued on next page...

Continued from previous page...

Mol	Chain	Res	Type
1	D	405	LYS
1	D	409	TYR
1	D	416	GLU
1	D	419	LEU
1	D	422	PHE
1	D	469	ARG
1	D	484	GLU
1	D	509	VAL
1	D	534	LEU
1	D	578	THR
1	D	582	VAL

Sometimes sidechains can be flipped to improve hydrogen bonding and reduce clashes. There are no such sidechains identified.

5.3.3 RNA [i](#)

There are no RNA molecules in this entry.

5.4 Non-standard residues in protein, DNA, RNA chains [i](#)

There are no non-standard protein/DNA/RNA residues in this entry.

5.5 Carbohydrates [i](#)

8 monosaccharides are modelled in this entry.

In the following table, the Counts columns list the number of bonds (or angles) for which Mogul statistics could be retrieved, the number of bonds (or angles) that are observed in the model and the number of bonds (or angles) that are defined in the Chemical Component Dictionary. The Link column lists molecule types, if any, to which the group is linked. The Z score for a bond length (or angle) is the number of standard deviations the observed value is removed from the expected value. A bond length (or angle) with $|Z| > 2$ is considered an outlier worth inspection. RMSZ is the root-mean-square of all Z scores of the bond lengths (or angles).

Mol	Type	Chain	Res	Link	Bond lengths			Bond angles		
					Counts	RMSZ	$\# Z > 2$	Counts	RMSZ	$\# Z > 2$
2	NAG	E	1	2,1	14,14,15	0.19	0	17,19,21	0.59	0
2	NAG	E	2	2	14,14,15	0.24	0	17,19,21	0.47	0
2	NAG	F	1	2,1	14,14,15	0.35	0	17,19,21	0.47	0
2	NAG	F	2	2	14,14,15	0.25	0	17,19,21	0.44	0

Mol	Type	Chain	Res	Link	Bond lengths			Bond angles		
					Counts	RMSZ	# Z > 2	Counts	RMSZ	# Z > 2
2	NAG	G	1	2,1	14,14,15	0.24	0	17,19,21	0.52	0
2	NAG	G	2	2	14,14,15	0.29	0	17,19,21	0.48	0
2	NAG	H	1	2,1	14,14,15	0.32	0	17,19,21	0.56	0
2	NAG	H	2	2	14,14,15	0.32	0	17,19,21	0.42	0

In the following table, the Chirals column lists the number of chiral outliers, the number of chiral centers analysed, the number of these observed in the model and the number defined in the Chemical Component Dictionary. Similar counts are reported in the Torsion and Rings columns. '-' means no outliers of that kind were identified.

Mol	Type	Chain	Res	Link	Chirals	Torsions	Rings
2	NAG	E	1	2,1	-	0/6/23/26	0/1/1/1
2	NAG	E	2	2	-	0/6/23/26	0/1/1/1
2	NAG	F	1	2,1	-	0/6/23/26	0/1/1/1
2	NAG	F	2	2	-	2/6/23/26	0/1/1/1
2	NAG	G	1	2,1	-	0/6/23/26	0/1/1/1
2	NAG	G	2	2	-	0/6/23/26	0/1/1/1
2	NAG	H	1	2,1	-	0/6/23/26	0/1/1/1
2	NAG	H	2	2	-	2/6/23/26	0/1/1/1

There are no bond length outliers.

There are no bond angle outliers.

There are no chirality outliers.

All (4) torsion outliers are listed below:

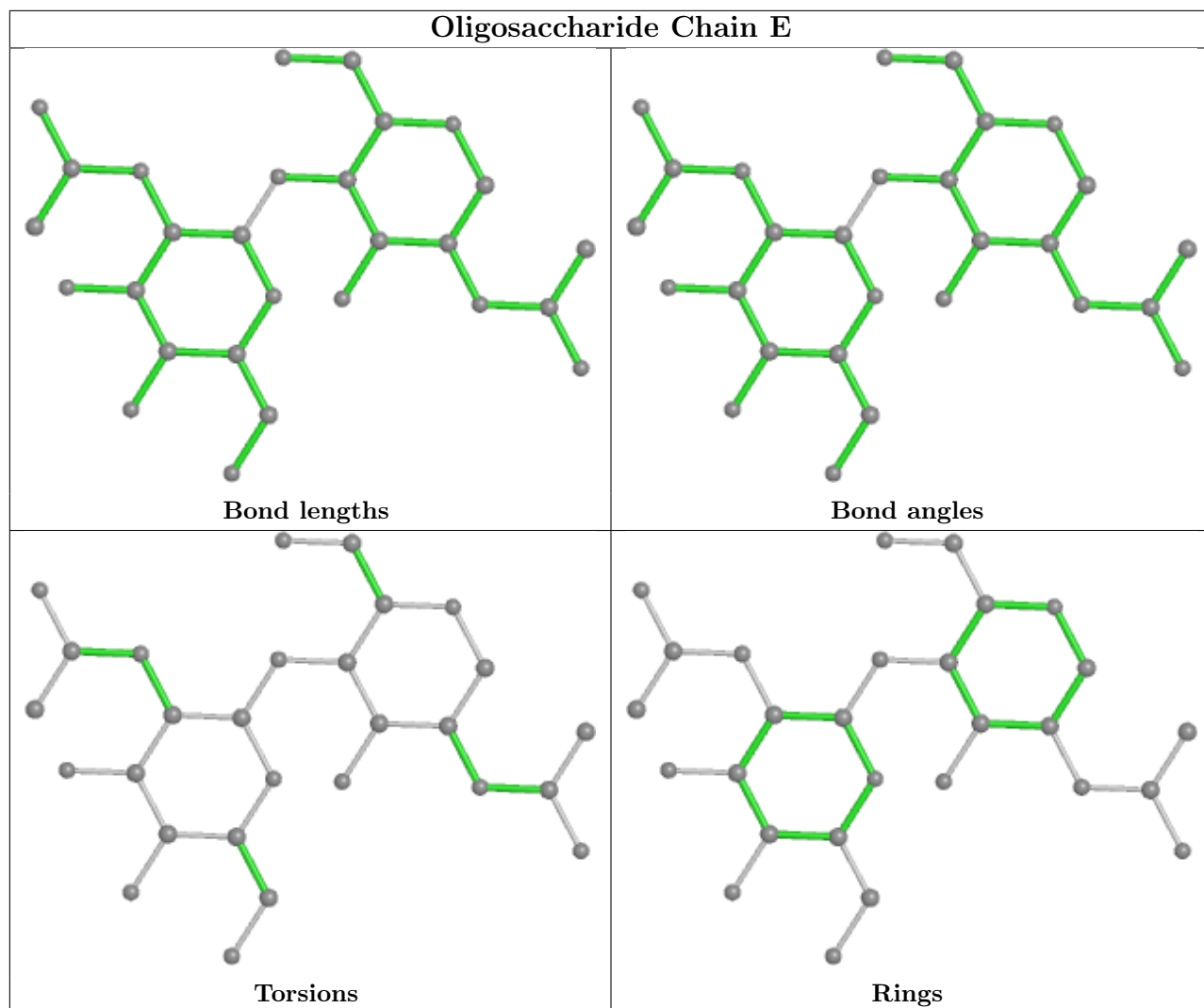
Mol	Chain	Res	Type	Atoms
2	H	2	NAG	C4-C5-C6-O6
2	H	2	NAG	O5-C5-C6-O6
2	F	2	NAG	C4-C5-C6-O6
2	F	2	NAG	O5-C5-C6-O6

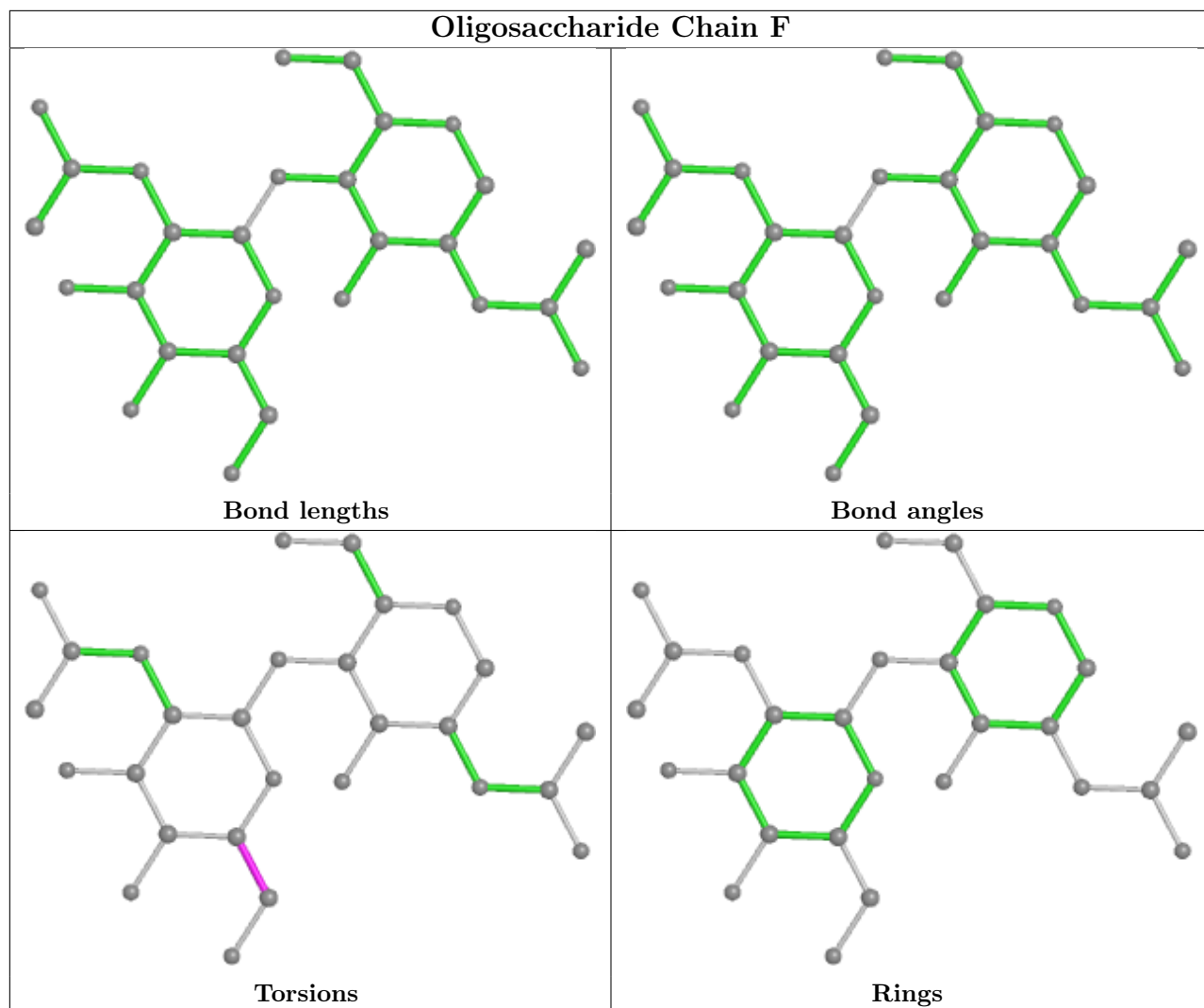
There are no ring outliers.

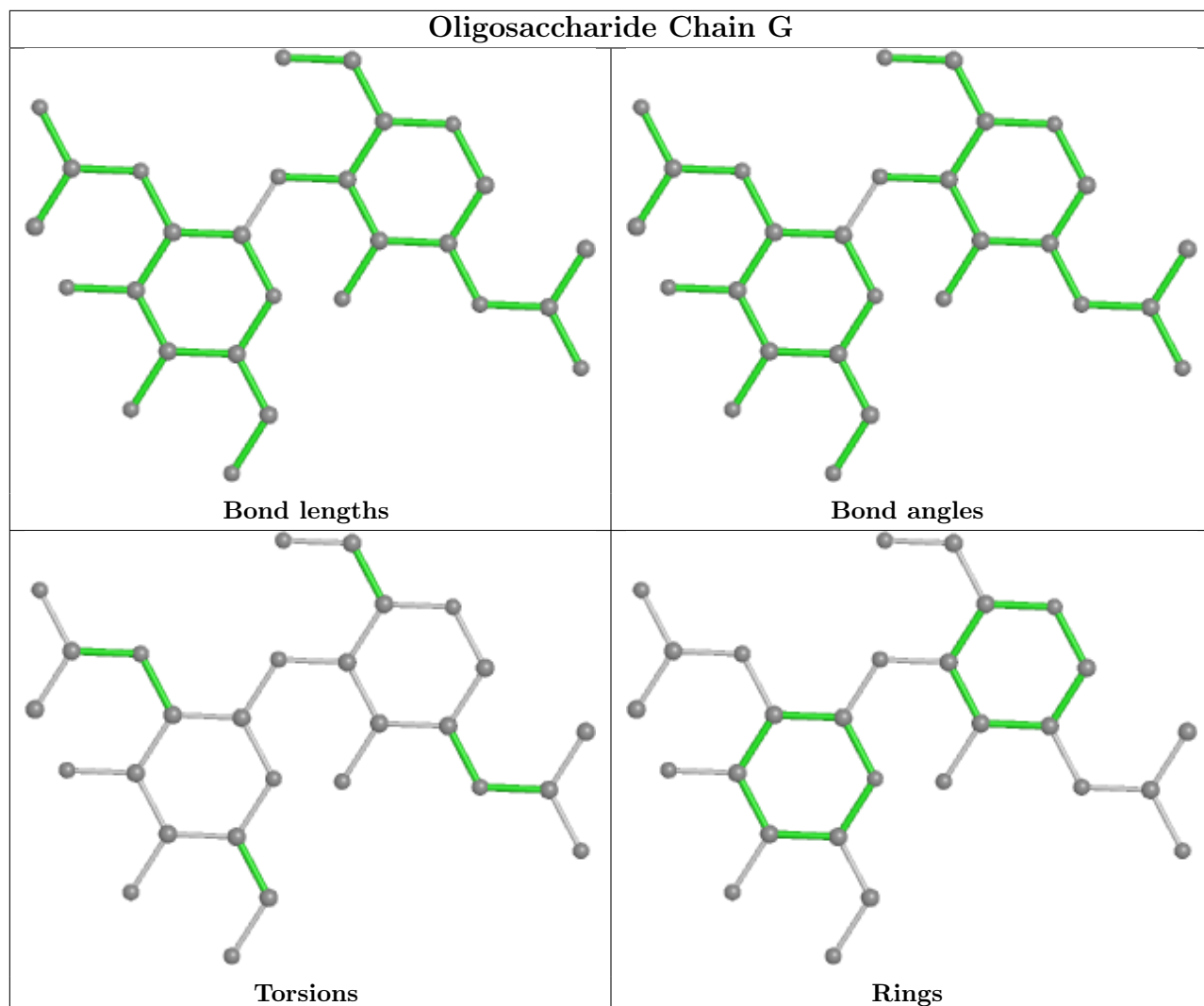
1 monomer is involved in 1 short contact:

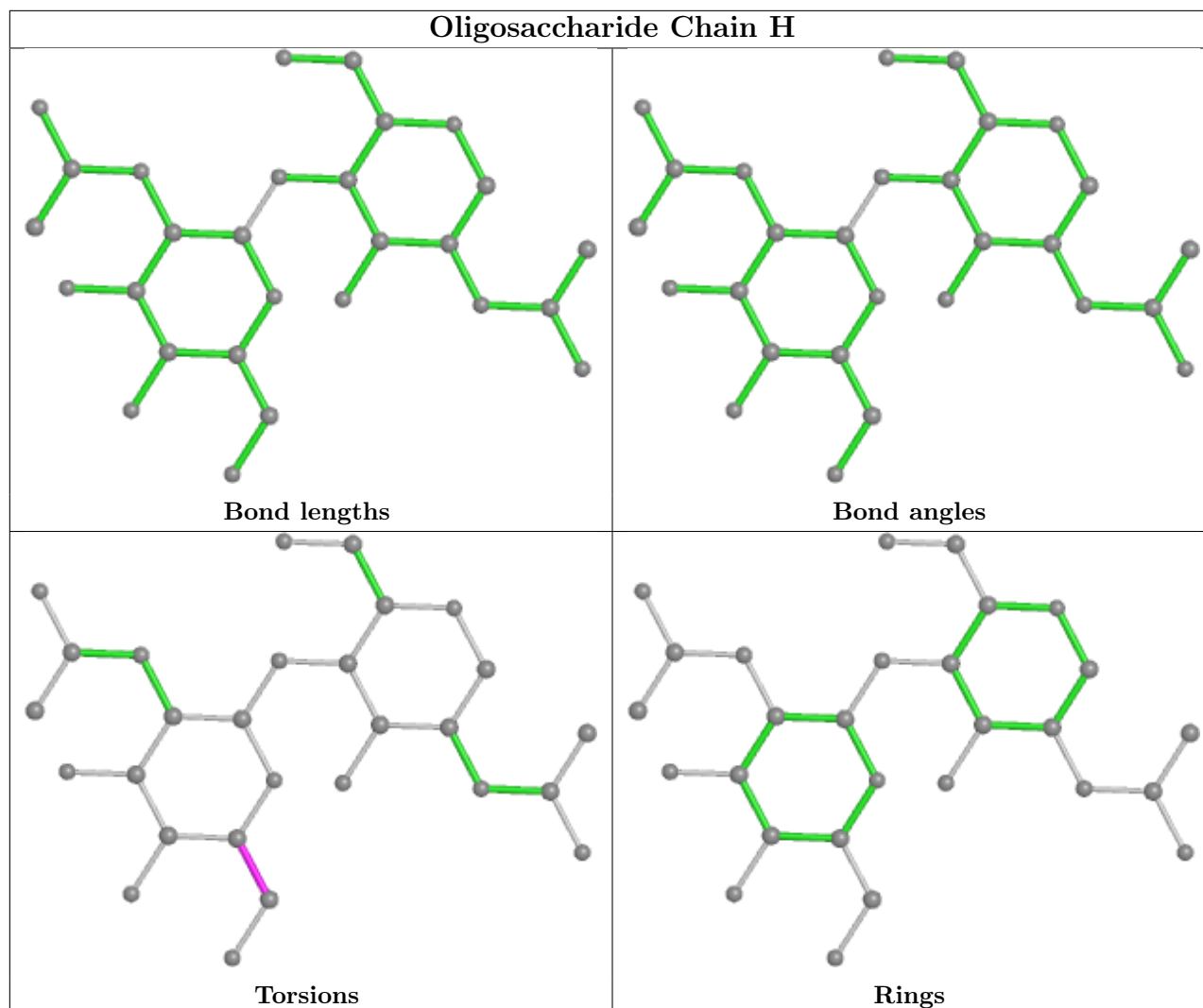
Mol	Chain	Res	Type	Clashes	Symm-Clashes
2	E	2	NAG	1	0

The following is a two-dimensional graphical depiction of Mogul quality analysis of bond lengths, bond angles, torsion angles, and ring geometry for oligosaccharide.









5.6 Ligand geometry [i](#)

14 ligands are modelled in this entry.

In the following table, the Counts columns list the number of bonds (or angles) for which Mogul statistics could be retrieved, the number of bonds (or angles) that are observed in the model and the number of bonds (or angles) that are defined in the Chemical Component Dictionary. The Link column lists molecule types, if any, to which the group is linked. The Z score for a bond length (or angle) is the number of standard deviations the observed value is removed from the expected value. A bond length (or angle) with $|Z| > 2$ is considered an outlier worth inspection. RMSZ is the root-mean-square of all Z scores of the bond lengths (or angles).

Mol	Type	Chain	Res	Link	Bond lengths			Bond angles		
					Counts	RMSZ	$\# Z > 2$	Counts	RMSZ	$\# Z > 2$
4	BOG	C	705	-	20,20,20	1.04	1 (5%)	25,25,25	1.16	2 (8%)
3	NAG	A	704	1	14,14,15	0.25	0	17,19,21	0.33	0
3	NAG	A	701	1	14,14,15	0.35	0	17,19,21	0.53	0

Mol	Type	Chain	Res	Link	Bond lengths			Bond angles		
					Counts	RMSZ	# Z > 2	Counts	RMSZ	# Z > 2
3	NAG	B	704	1	14,14,15	0.45	0	17,19,21	0.48	0
3	NAG	D	704	1	14,14,15	0.30	0	17,19,21	0.45	0
4	BOG	A	706	-	20,20,20	1.09	1 (5%)	25,25,25	1.15	2 (8%)
4	BOG	A	705	-	20,20,20	1.08	1 (5%)	25,25,25	1.12	3 (12%)
4	BOG	D	705	-	20,20,20	1.07	1 (5%)	25,25,25	1.11	2 (8%)
3	NAG	C	704	1	14,14,15	0.36	0	17,19,21	0.29	0
3	NAG	B	701	1	14,14,15	0.23	0	17,19,21	0.52	0
4	BOG	B	705	-	20,20,20	1.07	1 (5%)	25,25,25	1.15	2 (8%)
3	NAG	C	701	1	14,14,15	0.23	0	17,19,21	0.46	0
4	BOG	C	706	-	20,20,20	1.07	1 (5%)	25,25,25	1.14	2 (8%)
3	NAG	D	701	1	14,14,15	0.47	0	17,19,21	0.43	0

In the following table, the Chirals column lists the number of chiral outliers, the number of chiral centers analysed, the number of these observed in the model and the number defined in the Chemical Component Dictionary. Similar counts are reported in the Torsion and Rings columns. '-' means no outliers of that kind were identified.

Mol	Type	Chain	Res	Link	Chirals	Torsions	Rings
4	BOG	C	705	-	-	7/11/31/31	0/1/1/1
3	NAG	A	704	1	-	2/6/23/26	0/1/1/1
3	NAG	A	701	1	-	2/6/23/26	0/1/1/1
3	NAG	B	704	1	-	1/6/23/26	0/1/1/1
3	NAG	D	704	1	-	1/6/23/26	0/1/1/1
4	BOG	A	706	-	-	4/11/31/31	0/1/1/1
4	BOG	A	705	-	-	3/11/31/31	0/1/1/1
4	BOG	D	705	-	-	2/11/31/31	0/1/1/1
3	NAG	C	704	1	-	2/6/23/26	0/1/1/1
3	NAG	B	701	1	-	2/6/23/26	0/1/1/1
4	BOG	B	705	-	-	3/11/31/31	0/1/1/1
3	NAG	C	701	1	-	2/6/23/26	0/1/1/1
4	BOG	C	706	-	-	5/11/31/31	0/1/1/1
3	NAG	D	701	1	-	2/6/23/26	0/1/1/1

All (6) bond length outliers are listed below:

Mol	Chain	Res	Type	Atoms	Z	Observed(Å)	Ideal(Å)
4	C	705	BOG	O2-C2	-2.58	1.36	1.43
4	A	705	BOG	O2-C2	-2.57	1.36	1.43

Continued on next page...

Continued from previous page...

Mol	Chain	Res	Type	Atoms	Z	Observed(Å)	Ideal(Å)
4	A	706	BOG	O2-C2	-2.57	1.36	1.43
4	C	706	BOG	O2-C2	-2.55	1.37	1.43
4	D	705	BOG	O2-C2	-2.51	1.37	1.43
4	B	705	BOG	O2-C2	-2.50	1.37	1.43

All (13) bond angle outliers are listed below:

Mol	Chain	Res	Type	Atoms	Z	Observed(°)	Ideal(°)
4	C	705	BOG	C1'-O1-C1	3.71	119.99	113.84
4	B	705	BOG	C1'-O1-C1	3.54	119.71	113.84
4	D	705	BOG	C1'-O1-C1	3.53	119.69	113.84
4	C	706	BOG	C1'-O1-C1	3.46	119.58	113.84
4	A	706	BOG	C1'-O1-C1	3.42	119.51	113.84
4	A	705	BOG	O1-C1-C2	3.03	113.03	108.30
4	A	705	BOG	C1'-O1-C1	2.77	118.43	113.84
4	C	706	BOG	C1-O5-C5	-2.71	108.36	113.69
4	B	705	BOG	C1-O5-C5	-2.58	108.62	113.69
4	A	706	BOG	C1-O5-C5	-2.55	108.67	113.69
4	D	705	BOG	C1-O5-C5	-2.54	108.70	113.69
4	C	705	BOG	C1-O5-C5	-2.20	109.37	113.69
4	A	705	BOG	C1-O5-C5	-2.10	109.57	113.69

There are no chirality outliers.

All (38) torsion outliers are listed below:

Mol	Chain	Res	Type	Atoms
4	C	705	BOG	C2'-C1'-O1-C1
3	C	701	NAG	O5-C5-C6-O6
3	C	701	NAG	C4-C5-C6-O6
3	D	701	NAG	O5-C5-C6-O6
3	D	701	NAG	C4-C5-C6-O6
3	A	704	NAG	C4-C5-C6-O6
3	B	701	NAG	O5-C5-C6-O6
4	C	705	BOG	O1-C1'-C2'-C3'
3	A	701	NAG	O5-C5-C6-O6
3	B	701	NAG	C4-C5-C6-O6
3	C	704	NAG	C4-C5-C6-O6
4	A	706	BOG	C4'-C5'-C6'-C7'
4	A	705	BOG	C2'-C3'-C4'-C5'
3	A	701	NAG	C4-C5-C6-O6
4	A	705	BOG	O1-C1'-C2'-C3'
4	C	706	BOG	C4'-C5'-C6'-C7'

Continued on next page...

Continued from previous page...

Mol	Chain	Res	Type	Atoms
4	A	705	BOG	C3'-C4'-C5'-C6'
4	B	705	BOG	C4'-C5'-C6'-C7'
3	A	704	NAG	O5-C5-C6-O6
4	C	705	BOG	C1'-C2'-C3'-C4'
4	D	705	BOG	C4'-C5'-C6'-C7'
4	C	705	BOG	C3'-C4'-C5'-C6'
3	C	704	NAG	O5-C5-C6-O6
4	C	705	BOG	C2'-C3'-C4'-C5'
4	B	705	BOG	O5-C1-O1-C1'
4	A	706	BOG	O1-C1'-C2'-C3'
4	B	705	BOG	C2-C1-O1-C1'
4	C	705	BOG	C4-C5-C6-O6
4	A	706	BOG	O5-C1-O1-C1'
4	C	706	BOG	O5-C1-O1-C1'
4	C	705	BOG	O5-C5-C6-O6
3	D	704	NAG	C4-C5-C6-O6
4	C	706	BOG	C4-C5-C6-O6
4	A	706	BOG	C2-C1-O1-C1'
4	C	706	BOG	C2-C1-O1-C1'
4	D	705	BOG	C2'-C3'-C4'-C5'
3	B	704	NAG	C4-C5-C6-O6
4	C	706	BOG	C5'-C6'-C7'-C8'

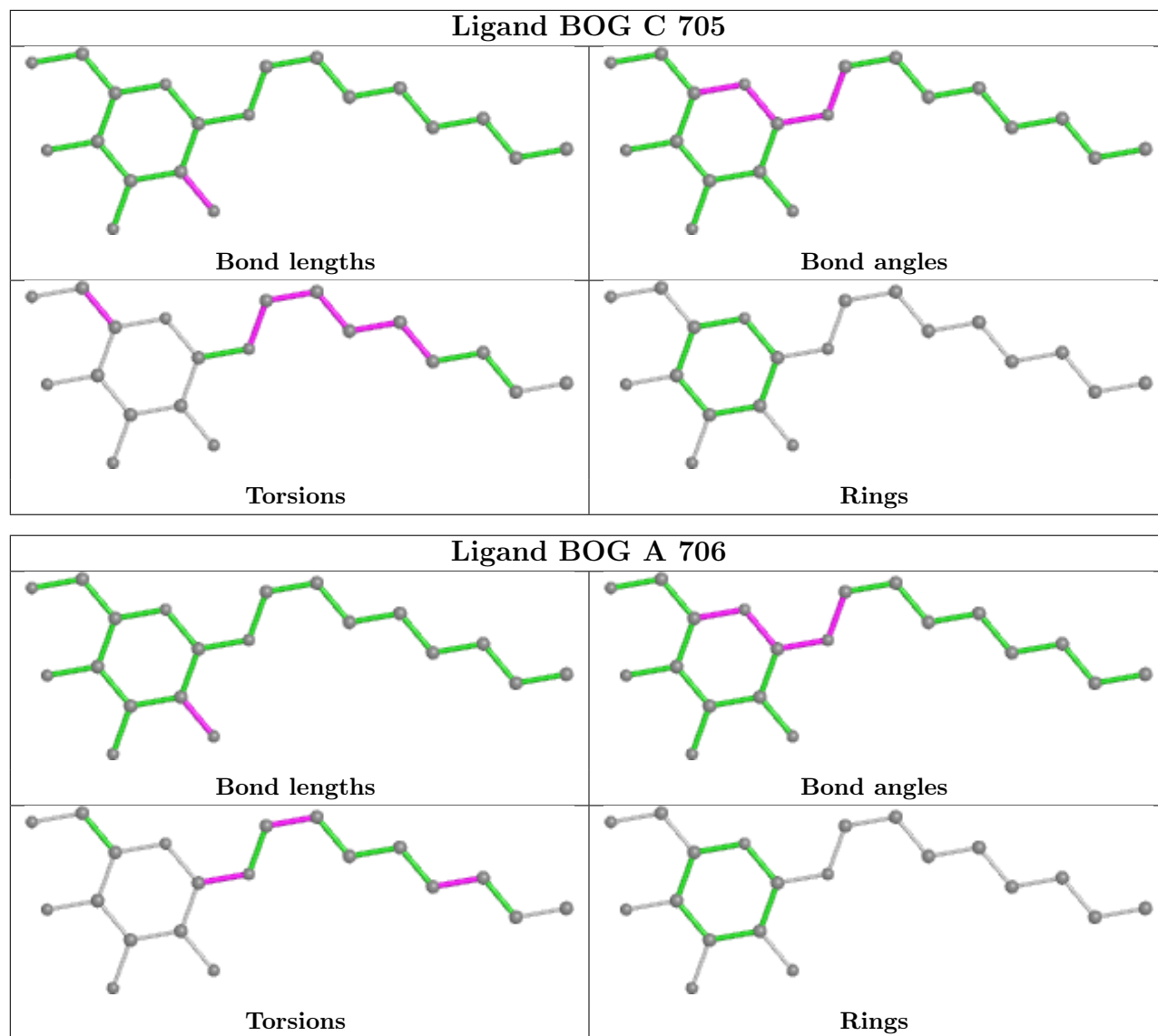
There are no ring outliers.

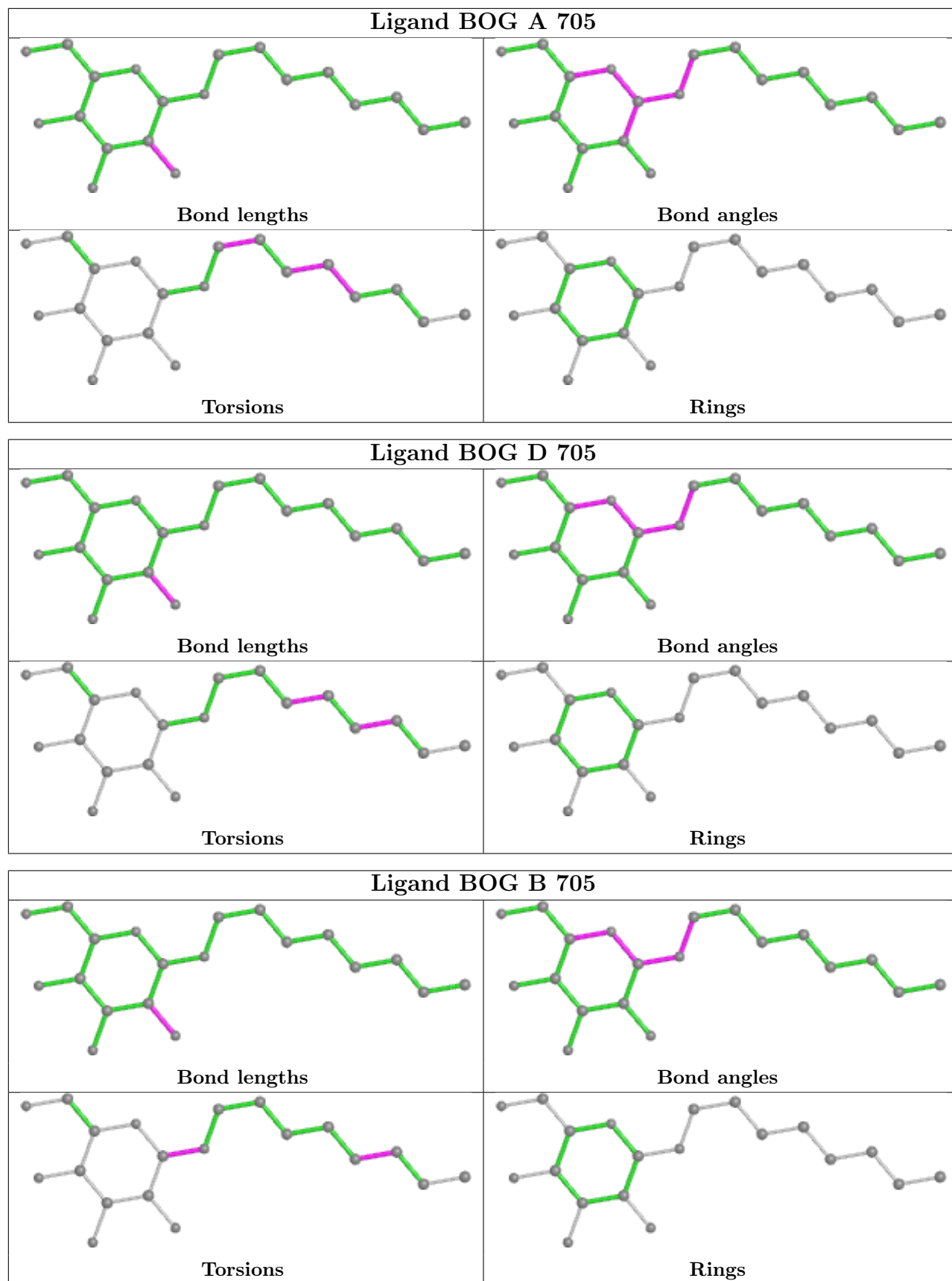
5 monomers are involved in 11 short contacts:

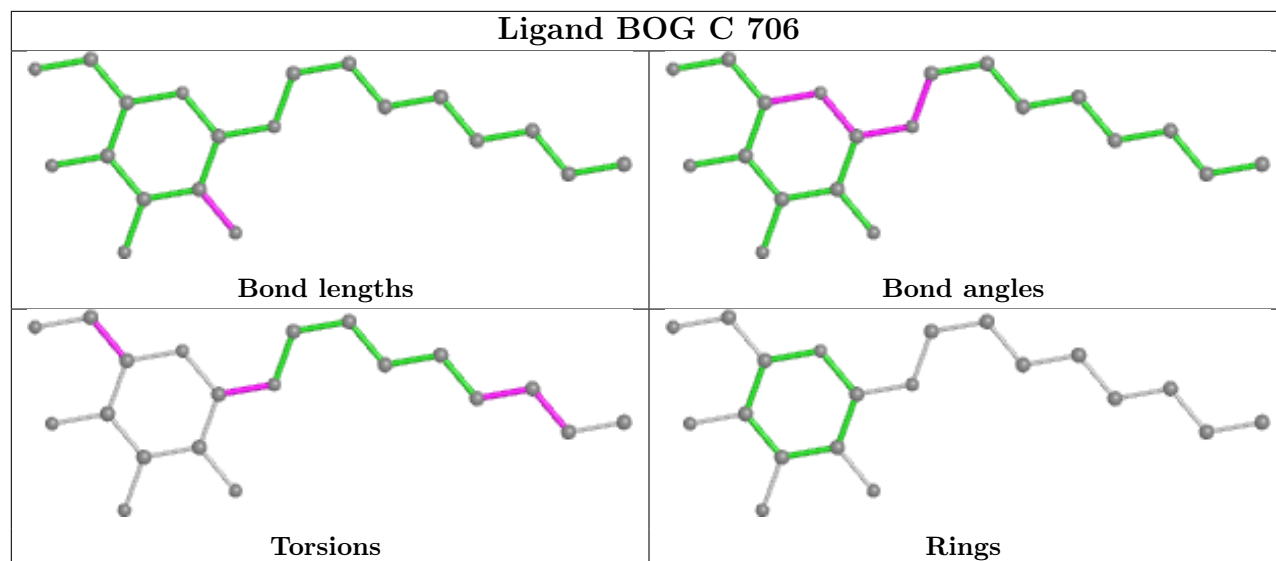
Mol	Chain	Res	Type	Clashes	Symm-Clashes
4	C	705	BOG	2	0
4	A	706	BOG	3	0
4	D	705	BOG	1	0
4	B	705	BOG	2	0
4	C	706	BOG	3	0

The following is a two-dimensional graphical depiction of Mogul quality analysis of bond lengths, bond angles, torsion angles, and ring geometry for all instances of the Ligand of Interest. In addition, ligands with molecular weight > 250 and outliers as shown on the validation Tables will also be included. For torsion angles, if less than 5% of the Mogul distribution of torsion angles is within 10 degrees of the torsion angle in question, then that torsion angle is considered an outlier. Any bond that is central to one or more torsion angles identified as an outlier by Mogul will be highlighted in the graph. For rings, the root-mean-square deviation (RMSD) between the ring in question and similar rings identified by Mogul is calculated over all ring torsion angles. If the average RMSD is greater than 60 degrees and the minimal RMSD between the ring in question and

any Mogul-identified rings is also greater than 60 degrees, then that ring is considered an outlier. The outliers are highlighted in purple. The color gray indicates Mogul did not find sufficient equivalents in the CSD to analyse the geometry.







5.7 Other polymers [i](#)

There are no such residues in this entry.

5.8 Polymer linkage issues [i](#)

There are no chain breaks in this entry.

6 Fit of model and data [i](#)

6.1 Protein, DNA and RNA chains [i](#)

In the following table, the column labelled ‘#RSRZ > 2’ contains the number (and percentage) of RSRZ outliers, followed by percent RSRZ outliers for the chain as percentile scores relative to all X-ray entries and entries of similar resolution. The OWAB column contains the minimum, median, 95th percentile and maximum values of the occupancy-weighted average B-factor per residue. The column labelled ‘Q < 0.9’ lists the number of (and percentage) of residues with an average occupancy less than 0.9.

Mol	Chain	Analysed	<RSRZ>	#RSRZ>2	OWAB(Å ²)	Q<0.9
1	A	552/587 (94%)	-0.21	16 (2%) 51 49	26, 41, 69, 98	0
1	B	552/587 (94%)	-0.15	10 (1%) 68 65	25, 40, 69, 90	0
1	C	552/587 (94%)	-0.06	21 (3%) 40 38	28, 53, 83, 106	0
1	D	552/587 (94%)	-0.03	11 (1%) 65 62	27, 48, 77, 95	0
All	All	2208/2348 (94%)	-0.12	58 (2%) 56 53	25, 45, 77, 106	0

All (58) RSRZ outliers are listed below:

Mol	Chain	Res	Type	RSRZ
1	C	583	GLN	6.7
1	C	409	TYR	4.7
1	C	81	LEU	4.2
1	C	82	LEU	3.8
1	A	75	LEU	3.7
1	C	215	LYS	3.7
1	C	74	PHE	3.3
1	D	82	LEU	3.3
1	A	82	LEU	3.2
1	C	105(A)	ILE	3.0
1	A	583	GLN	3.0
1	C	80	LEU	3.0
1	A	80	LEU	2.9
1	A	79	LYS	2.9
1	A	107	PHE	2.9
1	C	90	TRP	2.9
1	A	115	TYR	2.8
1	D	409	TYR	2.8
1	D	278	HIS	2.8
1	A	74	PHE	2.8
1	C	53	ASP	2.8

Continued on next page...

Continued from previous page...

Mol	Chain	Res	Type	RSRZ
1	C	399	ASP	2.8
1	A	81	LEU	2.7
1	C	52	PHE	2.7
1	B	583	GLN	2.7
1	D	77	ARG	2.6
1	B	81	LEU	2.6
1	B	82	LEU	2.6
1	C	416	GLU	2.6
1	D	91	TYR	2.5
1	B	169	LYS	2.5
1	C	405	LYS	2.5
1	C	421	GLN	2.5
1	A	215	LYS	2.5
1	D	493	ALA	2.5
1	B	377	ILE	2.4
1	B	409	TYR	2.4
1	C	33	ALA	2.4
1	A	540	CYS	2.4
1	D	74	PHE	2.4
1	A	258	GLY	2.2
1	B	170	GLU	2.2
1	A	214	HIS	2.2
1	B	74	PHE	2.2
1	D	168	ASN	2.2
1	A	78	ILE	2.2
1	A	122	TYR	2.2
1	B	122	TYR	2.2
1	C	495	TYR	2.2
1	C	79	LYS	2.2
1	C	107	PHE	2.1
1	B	53	ASP	2.1
1	D	122	TYR	2.1
1	D	81	LEU	2.1
1	D	514	PRO	2.0
1	A	83	LYS	2.0
1	C	54	GLN	2.0
1	C	418	GLY	2.0

6.2 Non-standard residues in protein, DNA, RNA chains

There are no non-standard protein/DNA/RNA residues in this entry.

6.3 Carbohydrates

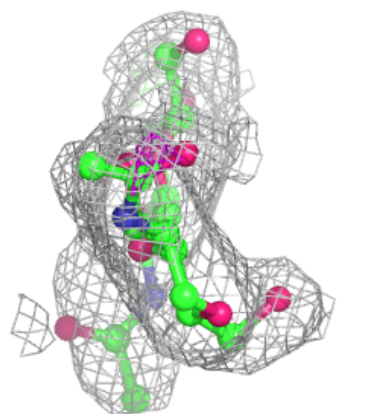
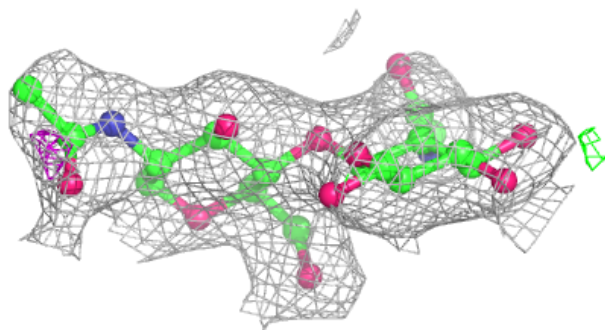
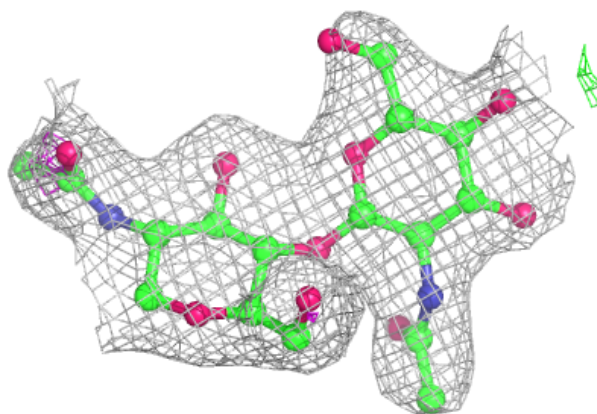
In the following table, the Atoms column lists the number of modelled atoms in the group and the number defined in the chemical component dictionary. The B-factors column lists the minimum, median, 95th percentile and maximum values of B factors of atoms in the group. The column labelled 'Q< 0.9' lists the number of atoms with occupancy less than 0.9.

Mol	Type	Chain	Res	Atoms	RSCC	RSR	B-factors(Å ²)	Q<0.9
2	NAG	E	2	14/15	0.90	0.20	56,66,73,76	0
2	NAG	F	2	14/15	0.92	0.13	48,66,73,78	0
2	NAG	H	2	14/15	0.92	0.16	52,60,69,71	0
2	NAG	G	2	14/15	0.93	0.21	54,59,69,72	0
2	NAG	H	1	14/15	0.95	0.10	27,38,45,55	0
2	NAG	E	1	14/15	0.95	0.11	28,36,42,53	0
2	NAG	G	1	14/15	0.96	0.10	31,44,49,51	0
2	NAG	F	1	14/15	0.96	0.12	30,39,47,59	0

The following is a graphical depiction of the model fit to experimental electron density for oligosaccharide. Each fit is shown from different orientation to approximate a three-dimensional view.

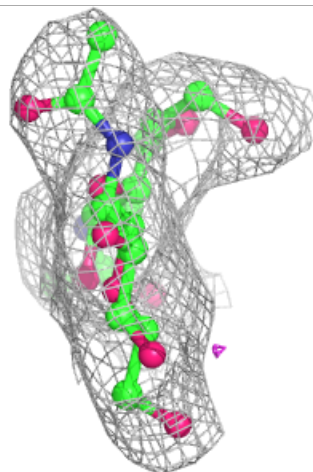
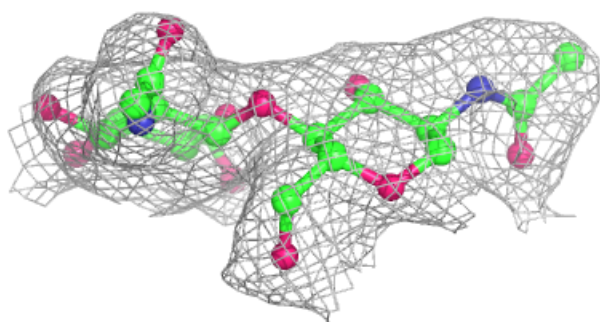
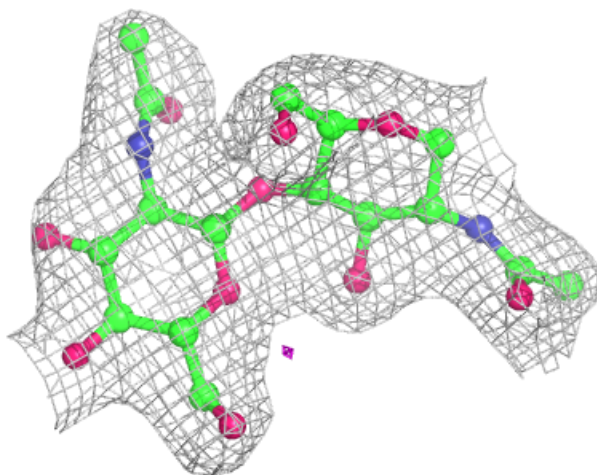
Electron density around Chain E:

$2mF_o-DF_c$ (at 0.7 rmsd) in gray
 mF_o-DF_c (at 3 rmsd) in purple (negative)
and green (positive)



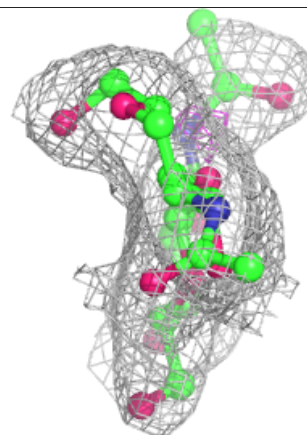
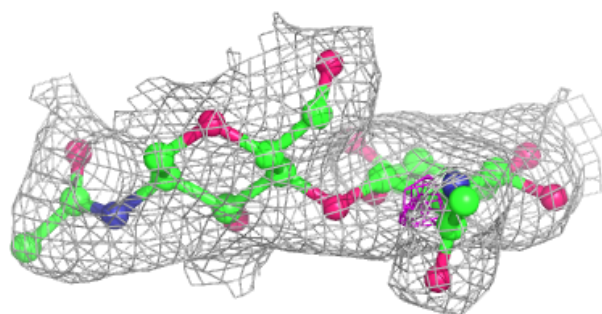
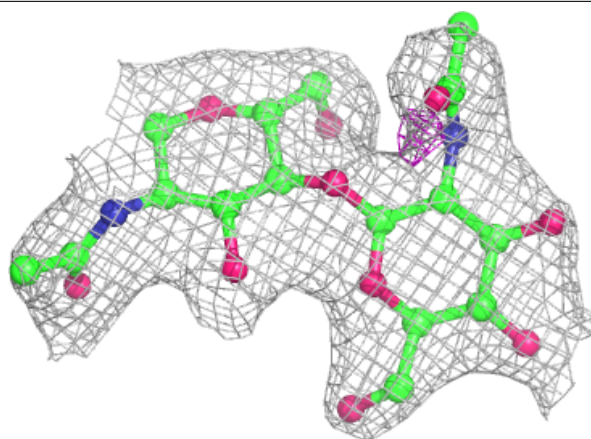
Electron density around Chain F:

$2mF_o-DF_c$ (at 0.7 rmsd) in gray
 mF_o-DF_c (at 3 rmsd) in purple (negative)
and green (positive)

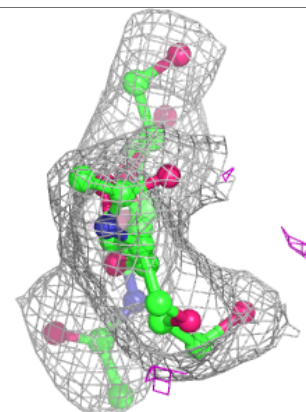
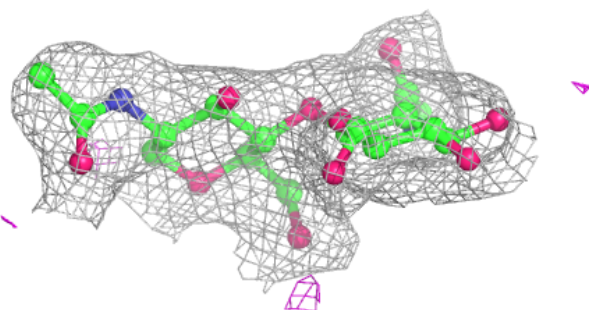
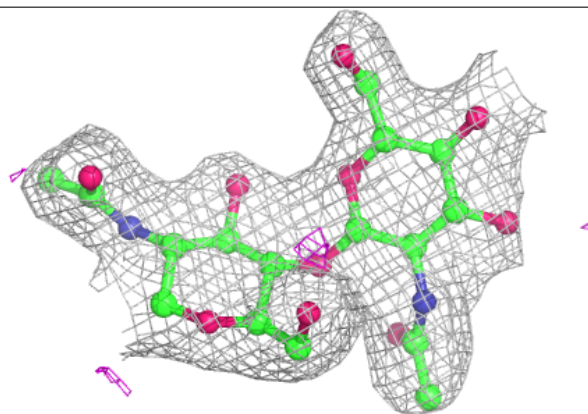


Electron density around Chain G:

$2mF_o-DF_c$ (at 0.7 rmsd) in gray
 mF_o-DF_c (at 3 rmsd) in purple (negative)
and green (positive)

**Electron density around Chain H:**

$2mF_o-DF_c$ (at 0.7 rmsd) in gray
 mF_o-DF_c (at 3 rmsd) in purple (negative)
and green (positive)



6.4 Ligands

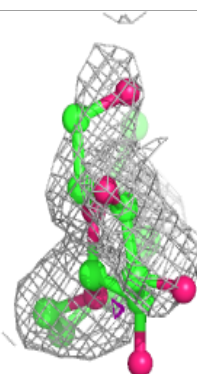
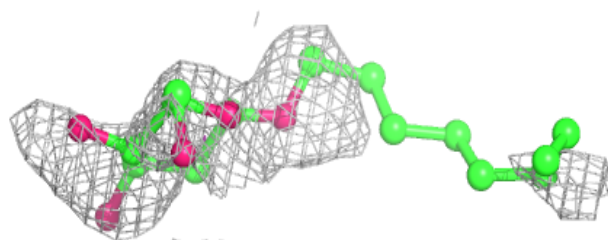
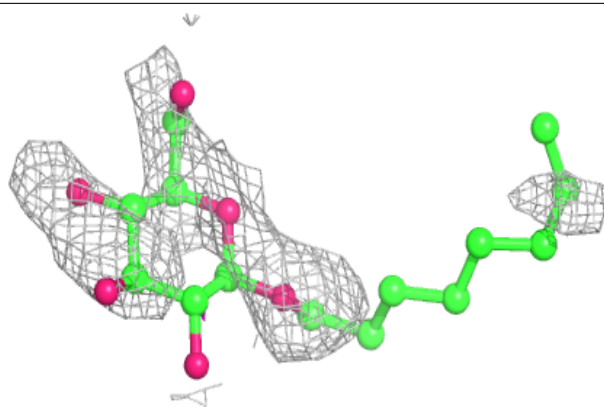
In the following table, the Atoms column lists the number of modelled atoms in the group and the number defined in the chemical component dictionary. The B-factors column lists the minimum, median, 95th percentile and maximum values of B factors of atoms in the group. The column labelled 'Q< 0.9' lists the number of atoms with occupancy less than 0.9.

Mol	Type	Chain	Res	Atoms	RSCC	RSR	B-factors(Å ²)	Q<0.9
4	BOG	A	706	20/20	0.47	0.57	134,147,150,153	0
4	BOG	D	705	20/20	0.58	0.54	139,147,151,151	0
4	BOG	C	706	20/20	0.59	0.46	133,145,148,150	0
4	BOG	B	705	20/20	0.69	0.40	137,142,147,147	0
3	NAG	B	701	14/15	0.72	0.29	68,79,86,91	0
3	NAG	D	701	14/15	0.75	0.17	63,74,82,85	0
3	NAG	C	704	14/15	0.78	0.24	63,72,85,92	0
3	NAG	D	704	14/15	0.82	0.16	56,62,73,75	0
3	NAG	A	701	14/15	0.83	0.18	61,72,88,90	0
4	BOG	C	705	20/20	0.83	0.27	59,72,86,87	0
3	NAG	C	701	14/15	0.86	0.25	63,80,87,88	0
4	BOG	A	705	20/20	0.88	0.21	44,58,97,99	0
3	NAG	A	704	14/15	0.89	0.23	58,68,76,77	0
3	NAG	B	704	14/15	0.91	0.13	46,55,62,68	0

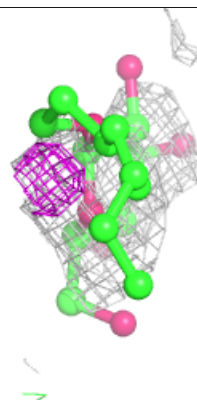
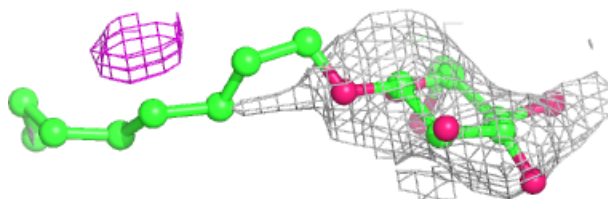
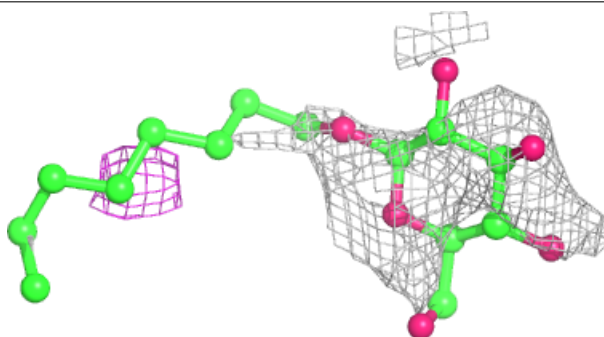
The following is a graphical depiction of the model fit to experimental electron density of all instances of the Ligand of Interest. In addition, ligands with molecular weight > 250 and outliers as shown on the geometry validation Tables will also be included. Each fit is shown from different orientation to approximate a three-dimensional view.

Electron density around BOG A 706:

$2mF_o-DF_c$ (at 0.7 rmsd) in gray
 mF_o-DF_c (at 3 rmsd) in purple (negative)
and green (positive)

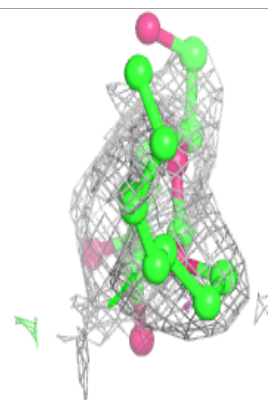
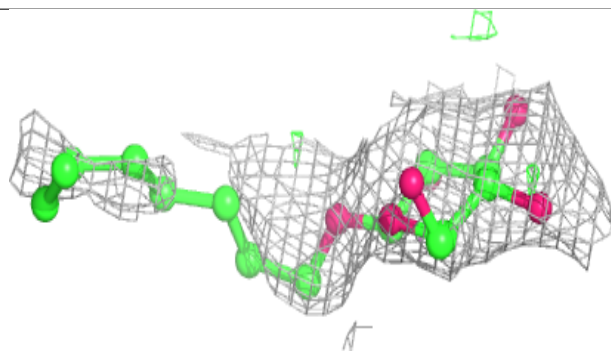
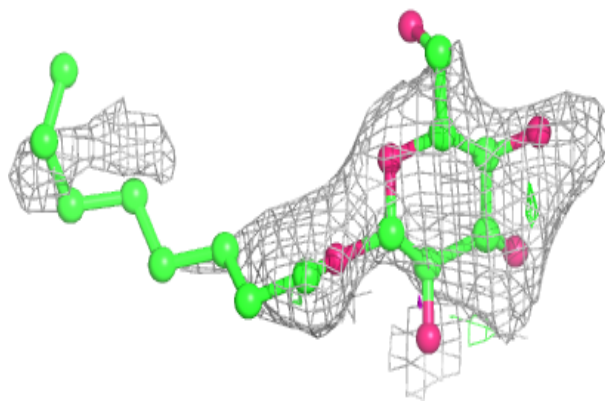
**Electron density around BOG D 705:**

$2mF_o-DF_c$ (at 0.7 rmsd) in gray
 mF_o-DF_c (at 3 rmsd) in purple (negative)
and green (positive)

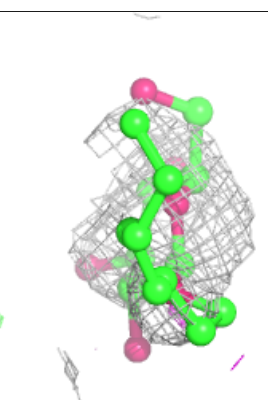
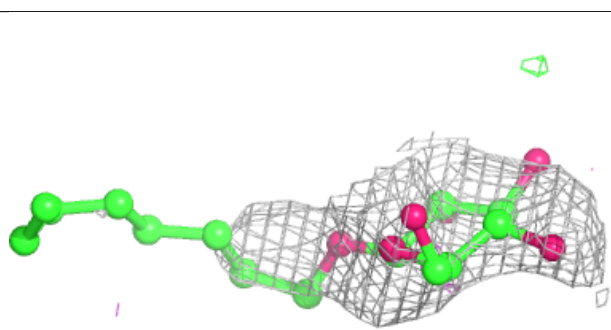
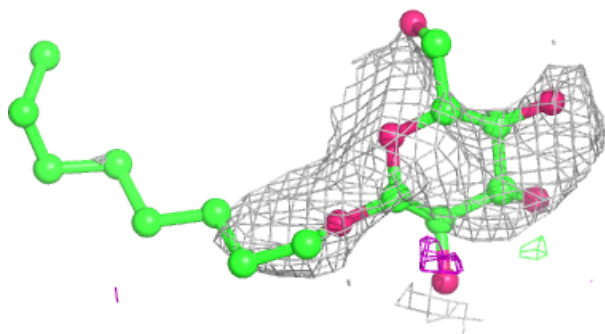


Electron density around BOG C 706:

$2mF_o-DF_c$ (at 0.7 rmsd) in gray
 mF_o-DF_c (at 3 rmsd) in purple (negative)
and green (positive)

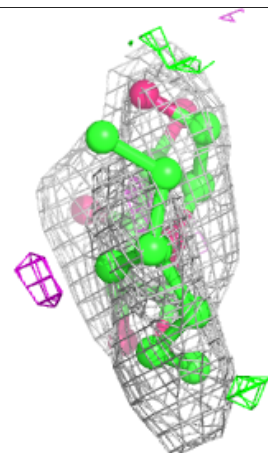
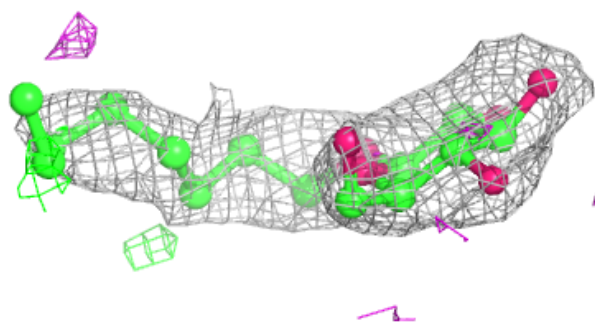
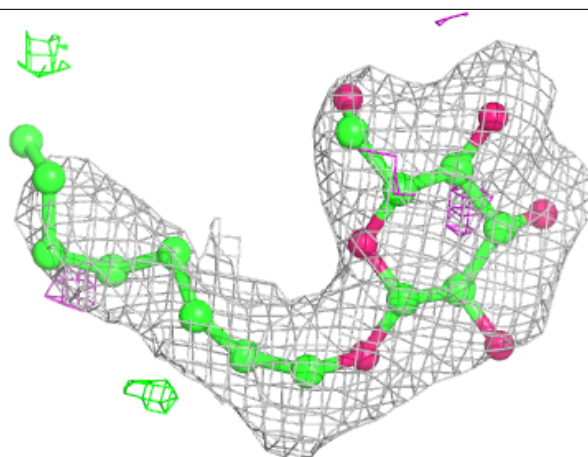
**Electron density around BOG B 705:**

$2mF_o-DF_c$ (at 0.7 rmsd) in gray
 mF_o-DF_c (at 3 rmsd) in purple (negative)
and green (positive)

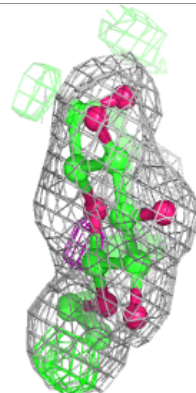
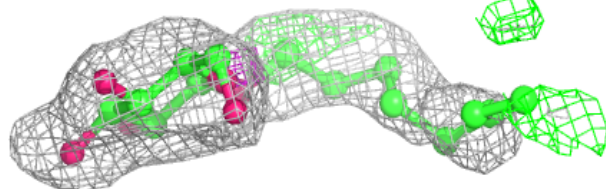
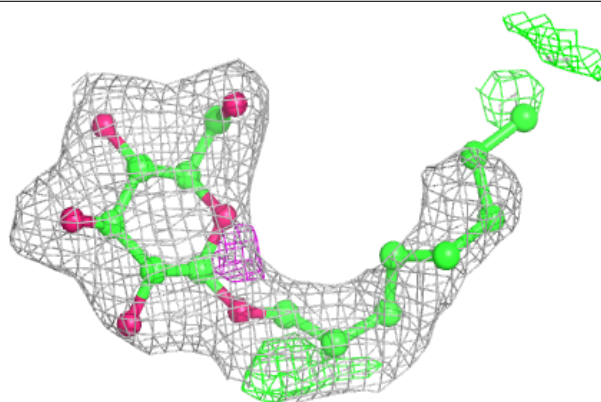


Electron density around BOG C 705:

$2mF_o-DF_c$ (at 0.7 rmsd) in gray
 mF_o-DF_c (at 3 rmsd) in purple (negative)
and green (positive)

**Electron density around BOG A 705:**

$2mF_o-DF_c$ (at 0.7 rmsd) in gray
 mF_o-DF_c (at 3 rmsd) in purple (negative)
and green (positive)



6.5 Other polymers [i](#)

There are no such residues in this entry.