



wwPDB X-ray Structure Validation Summary Report ⓘ

Oct 11, 2023 – 01:42 PM EDT

PDB ID : 7RS2
Title : Crystal Structure of the ER-alpha Ligand-binding Domain (L372S, L536S) in complex with DMERI-23
Authors : Min, J.; Nwachukwu, J.C.; Min, C.K.; Njeri, J.W.; Srinivasan, S.; Rangarajan, E.S.; Nettles, C.C.; Yan, S.; Houtman, R.; Griffin, P.R.; Izard, T.; Katzenellenbogen, B.S.; Katzenellenbogen, J.A.; Nettles, K.W.
Deposited on : 2021-08-10
Resolution : 1.72 Å(reported)

This is a wwPDB X-ray Structure Validation Summary Report for a publicly released PDB entry.

We welcome your comments at validation@mail.wwpdb.org

A user guide is available at

<https://www.wwpdb.org/validation/2017/XrayValidationReportHelp>

with specific help available everywhere you see the ⓘ symbol.

The types of validation reports are described at

<http://www.wwpdb.org/validation/2017/FAQs#types>.

The following versions of software and data (see [references](#) ①) were used in the production of this report:

MolProbity : 4.02b-467
Mogul : 1.8.5 (274361), CSD as541be (2020)
Xtrriage (Phenix) : 1.13
EDS : 2.35.1
buster-report : 1.1.7 (2018)
Percentile statistics : 20191225.v01 (using entries in the PDB archive December 25th 2019)
Refmac : 5.8.0158
CCP4 : 7.0.044 (Gargrove)
Ideal geometry (proteins) : Engh & Huber (2001)
Ideal geometry (DNA, RNA) : Parkinson et al. (1996)
Validation Pipeline (wwPDB-VP) : 2.35.1

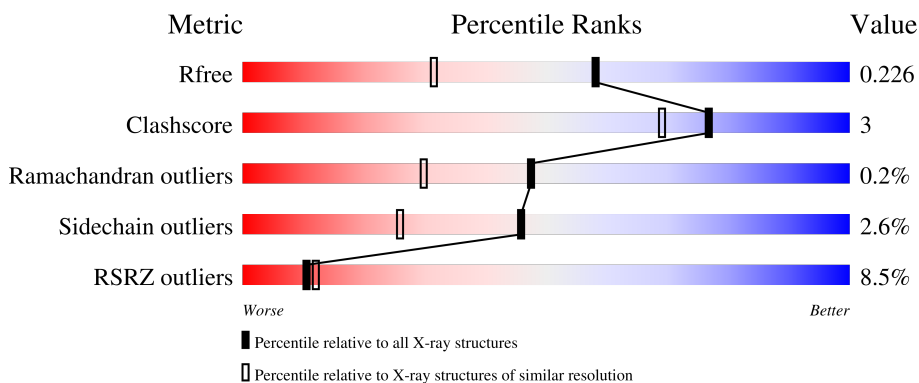
1 Overall quality at a glance

The following experimental techniques were used to determine the structure:

X-RAY DIFFRACTION

The reported resolution of this entry is 1.72 Å.

Percentile scores (ranging between 0-100) for global validation metrics of the entry are shown in the following graphic. The table shows the number of entries on which the scores are based.



Metric	Whole archive (#Entries)	Similar resolution (#Entries, resolution range(Å))
R_{free}	130704	5722 (1.74-1.70)
Clashscore	141614	6152 (1.74-1.70)
Ramachandran outliers	138981	6051 (1.74-1.70)
Sidechain outliers	138945	6051 (1.74-1.70)
RSRZ outliers	127900	5629 (1.74-1.70)

The table below summarises the geometric issues observed across the polymeric chains and their fit to the electron density. The red, orange, yellow and green segments of the lower bar indicate the fraction of residues that contain outliers for ≥ 3 , 2, 1 and 0 types of geometric quality criteria respectively. A grey segment represents the fraction of residues that are not modelled. The numeric value for each fraction is indicated below the corresponding segment, with a dot representing fractions $\leq 5\%$. The upper red bar (where present) indicates the fraction of residues that have poor fit to the electron density. The numeric value is given above the bar.

Mol	Chain	Length	Quality of chain
1	A	260	 8% 87% 6% • 6%
1	B	260	 5% 84% • 12%
1	C	260	 12% 88% 6% • 5%
1	D	260	 7% 84% 6% 10%

2 Entry composition

There are 3 unique types of molecules in this entry. The entry contains 8126 atoms, of which 0 are hydrogens and 0 are deuteriums.

In the tables below, the ZeroOcc column contains the number of atoms modelled with zero occupancy, the AltConf column contains the number of residues with at least one atom in alternate conformation and the Trace column contains the number of residues modelled with at most 2 atoms.

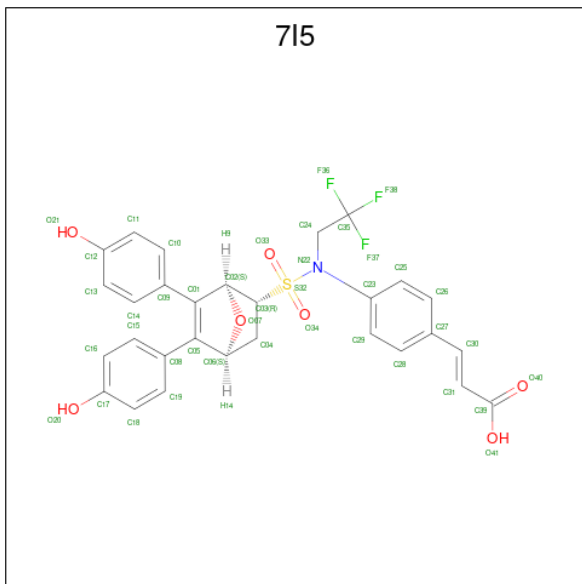
- Molecule 1 is a protein called Estrogen receptor.

Mol	Chain	Residues	Atoms					ZeroOcc	AltConf	Trace
			Total	C	N	O	S			
1	A	245	1962	1252	335	358	17	0	1	0
1	B	230	1842	1178	314	331	19	0	0	0
1	C	247	1964	1252	337	359	16	0	1	0
1	D	234	1865	1191	318	337	19	0	0	0

There are 20 discrepancies between the modelled and reference sequences:

Chain	Residue	Modelled	Actual	Comment	Reference
A	295	SER	-	expression tag	UNP P03372
A	296	ASN	-	expression tag	UNP P03372
A	297	ALA	-	expression tag	UNP P03372
A	372	SER	LEU	engineered mutation	UNP P03372
A	536	SER	LEU	engineered mutation	UNP P03372
B	295	SER	-	expression tag	UNP P03372
B	296	ASN	-	expression tag	UNP P03372
B	297	ALA	-	expression tag	UNP P03372
B	372	SER	LEU	engineered mutation	UNP P03372
B	536	SER	LEU	engineered mutation	UNP P03372
C	295	SER	-	expression tag	UNP P03372
C	296	ASN	-	expression tag	UNP P03372
C	297	ALA	-	expression tag	UNP P03372
C	372	SER	LEU	engineered mutation	UNP P03372
C	536	SER	LEU	engineered mutation	UNP P03372
D	295	SER	-	expression tag	UNP P03372
D	296	ASN	-	expression tag	UNP P03372
D	297	ALA	-	expression tag	UNP P03372
D	372	SER	LEU	engineered mutation	UNP P03372
D	536	SER	LEU	engineered mutation	UNP P03372

- Molecule 2 is (2E)-3-(4-[(1S,2R,4S,5S,6S)-5,6-bis(4-hydroxyphenyl)-7-oxabicyclo[2.2.1]heptane-2-sulfonyl](2,2,2-trifluoroethyl)amino}phenyl)prop-2-enoic acid (three-letter code: 7I5) (formula: C₂₉H₂₄F₃NO₇S) (labeled as "Ligand of Interest" by depositor).



Mol	Chain	Residues	Atoms					ZeroOcc	AltConf	
2	A	1	Total	C	N	O	S	0	0	
			33	26	1	5	1			
2	B	1	Total	C	F	N	O	S	0	0
			41	29	3	1	7	1		
2	C	1	Total	C	N	O	S	0	0	
			33	26	1	5	1			
2	D	1	Total	C	F	N	O	S	0	0
			41	29	3	1	7	1		

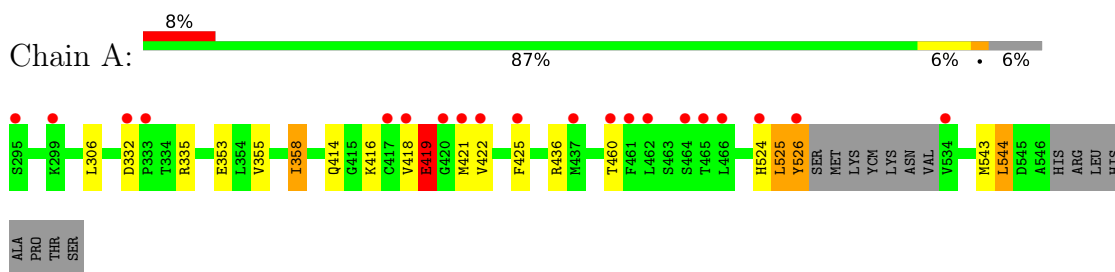
- Molecule 3 is water.

Mol	Chain	Residues	Atoms		ZeroOcc	AltConf
3	A	112	Total	O	0	0
			112	112		
3	B	82	Total	O	0	0
			82	82		
3	C	75	Total	O	0	0
			75	75		
3	D	76	Total	O	0	0
			76	76		

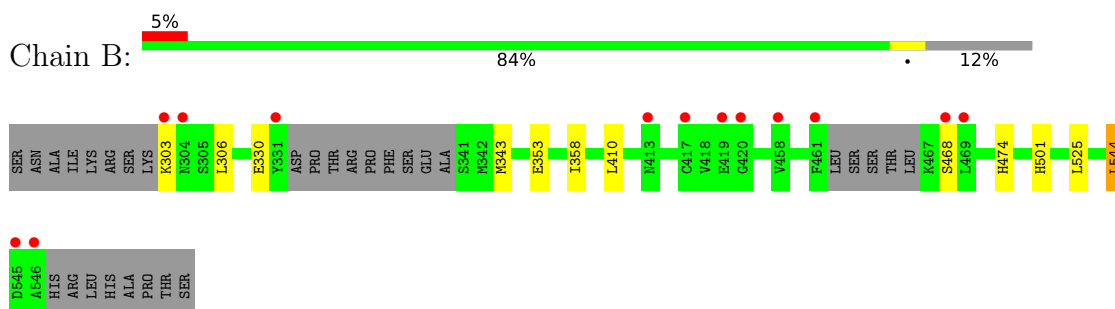
3 Residue-property plots [i](#)

These plots are drawn for all protein, RNA, DNA and oligosaccharide chains in the entry. The first graphic for a chain summarises the proportions of the various outlier classes displayed in the second graphic. The second graphic shows the sequence view annotated by issues in geometry and electron density. Residues are color-coded according to the number of geometric quality criteria for which they contain at least one outlier: green = 0, yellow = 1, orange = 2 and red = 3 or more. A red dot above a residue indicates a poor fit to the electron density ($RSRZ > 2$). Stretches of 2 or more consecutive residues without any outlier are shown as a green connector. Residues present in the sample, but not in the model, are shown in grey.

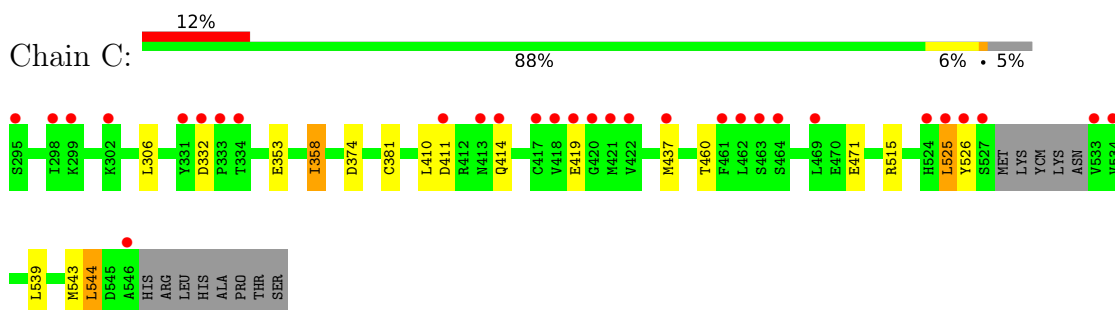
- Molecule 1: Estrogen receptor



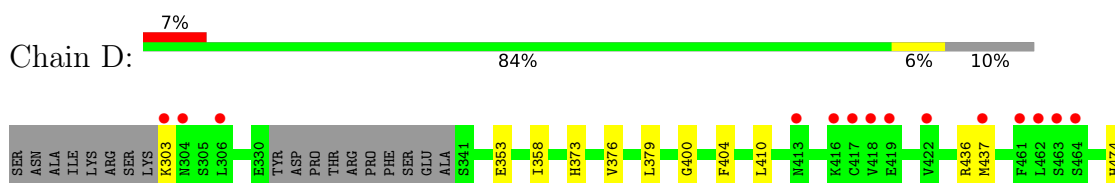
- Molecule 1: Estrogen receptor



- Molecule 1: Estrogen receptor



- Molecule 1: Estrogen receptor





4 Data and refinement statistics i

Property	Value	Source
Space group	P 1	Depositor
Cell constants a, b, c, α , β , γ	53.86Å 58.76Å 93.70Å 86.45° 75.11° 62.82°	Depositor
Resolution (Å)	90.36 – 1.72 90.36 – 1.72	Depositor EDS
% Data completeness (in resolution range)	72.8 (90.36-1.72) 72.8 (90.36-1.72)	Depositor EDS
R_{merge}	(Not available)	Depositor
R_{sym}	(Not available)	Depositor
$\langle I/\sigma(I) \rangle$ ¹	1.55 (at 1.72Å)	Xtrriage
Refinement program	REFMAC 5.8.0253	Depositor
R, R_{free}	0.194 , 0.221 0.203 , 0.226	Depositor DCC
R_{free} test set	3761 reflections (4.96%)	wwPDB-VP
Wilson B-factor (Å ²)	23.5	Xtrriage
Anisotropy	0.015	Xtrriage
Bulk solvent k_{sol} (e/Å ³), B_{sol} (Å ²)	0.37 , 47.2	EDS
L-test for twinning ²	$\langle L \rangle = 0.50$, $\langle L^2 \rangle = 0.33$	Xtrriage
Estimated twinning fraction	0.107 for h,h-k,h-l	Xtrriage
F_o, F_c correlation	0.94	EDS
Total number of atoms	8126	wwPDB-VP
Average B, all atoms (Å ²)	32.0	wwPDB-VP

Xtrriage's analysis on translational NCS is as follows: *The largest off-origin peak in the Patterson function is 6.71% of the height of the origin peak. No significant pseudotranslation is detected.*

¹Intensities estimated from amplitudes.

²Theoretical values of $\langle |L| \rangle$, $\langle L^2 \rangle$ for acentric reflections are 0.5, 0.333 respectively for untwinned datasets, and 0.375, 0.2 for perfectly twinned datasets.

5 Model quality

5.1 Standard geometry

Bond lengths and bond angles in the following residue types are not validated in this section: YCM, 7I5

The Z score for a bond length (or angle) is the number of standard deviations the observed value is removed from the expected value. A bond length (or angle) with $|Z| > 5$ is considered an outlier worth inspection. RMSZ is the root-mean-square of all Z scores of the bond lengths (or angles).

Mol	Chain	Bond lengths		Bond angles	
		RMSZ	# Z >5	RMSZ	# Z >5
1	A	0.71	0/1986	0.73	0/2680
1	B	0.69	0/1851	0.76	0/2492
1	C	0.70	0/1988	0.73	0/2684
1	D	0.70	0/1874	0.76	0/2525
All	All	0.70	0/7699	0.74	0/10381

Chiral center outliers are detected by calculating the chiral volume of a chiral center and verifying if the center is modelled as a planar moiety or with the opposite hand. A planarity outlier is detected by checking planarity of atoms in a peptide group, atoms in a mainchain group or atoms of a sidechain that are expected to be planar.

Mol	Chain	#Chirality outliers	#Planarity outliers
1	A	0	1
1	C	0	1
All	All	0	2

There are no bond length outliers.

There are no bond angle outliers.

There are no chirality outliers.

All (2) planarity outliers are listed below:

Mol	Chain	Res	Type	Group
1	A	460	THR	Peptide
1	C	460	THR	Peptide

5.2 Too-close contacts [i](#)

In the following table, the Non-H and H(model) columns list the number of non-hydrogen atoms and hydrogen atoms in the chain respectively. The H(added) column lists the number of hydrogen atoms added and optimized by MolProbity. The Clashes column lists the number of clashes within the asymmetric unit, whereas Symm-Clashes lists symmetry-related clashes.

Mol	Chain	Non-H	H(model)	H(added)	Clashes	Symm-Clashes
1	A	1962	0	2006	19	0
1	B	1842	0	1889	6	0
1	C	1964	0	1995	9	0
1	D	1865	0	1920	12	0
2	A	33	0	0	3	0
2	B	41	0	0	1	0
2	C	33	0	0	1	0
2	D	41	0	0	3	0
3	A	112	0	0	0	1
3	B	82	0	0	1	1
3	C	75	0	0	1	0
3	D	76	0	0	3	0
All	All	8126	0	7810	46	1

The all-atom clashscore is defined as the number of clashes found per 1000 atoms (including hydrogen atoms). The all-atom clashscore for this structure is 3.

The worst 5 of 46 close contacts within the same asymmetric unit are listed below, sorted by their clash magnitude.

Atom-1	Atom-2	Interatomic distance (Å)	Clash overlap (Å)
1:D:533:VAL:HG11	2:D:601:7I5:O21	1.78	0.82
1:D:533:VAL:CG1	2:D:601:7I5:O21	2.34	0.74
1:A:416:LYS:HG2	1:A:422:VAL:HG21	1.69	0.73
1:C:411:ASP:H	1:C:414:GLN:HE21	1.35	0.73
1:B:330:GLU:OE2	3:B:701:HOH:O	2.10	0.69

All (1) symmetry-related close contacts are listed below. The label for Atom-2 includes the symmetry operator and encoded unit-cell translations to be applied.

Atom-1	Atom-2	Interatomic distance (Å)	Clash overlap (Å)
3:A:786:HOH:O	3:B:701:HOH:O[1_565]	1.67	0.53

5.3 Torsion angles [i](#)

5.3.1 Protein backbone [i](#)

In the following table, the Percentiles column shows the percent Ramachandran outliers of the chain as a percentile score with respect to all X-ray entries followed by that with respect to entries of similar resolution.

The Analysed column shows the number of residues for which the backbone conformation was analysed, and the total number of residues.

Mol	Chain	Analysed	Favoured	Allowed	Outliers	Percentiles	
1	A	241/260 (93%)	238 (99%)	2 (1%)	1 (0%)	34	18
1	B	222/260 (85%)	219 (99%)	3 (1%)	0	100	100
1	C	243/260 (94%)	240 (99%)	2 (1%)	1 (0%)	34	18
1	D	228/260 (88%)	225 (99%)	3 (1%)	0	100	100
All	All	934/1040 (90%)	922 (99%)	10 (1%)	2 (0%)	47	30

All (2) Ramachandran outliers are listed below:

Mol	Chain	Res	Type
1	A	419	GLU
1	C	419	GLU

5.3.2 Protein sidechains [i](#)

In the following table, the Percentiles column shows the percent sidechain outliers of the chain as a percentile score with respect to all X-ray entries followed by that with respect to entries of similar resolution.

The Analysed column shows the number of residues for which the sidechain conformation was analysed, and the total number of residues.

Mol	Chain	Analysed	Rotameric	Outliers	Percentiles	
1	A	220/232 (95%)	211 (96%)	9 (4%)	30	11
1	B	205/232 (88%)	201 (98%)	4 (2%)	55	37
1	C	218/232 (94%)	211 (97%)	7 (3%)	39	18
1	D	209/232 (90%)	207 (99%)	2 (1%)	76	65
All	All	852/928 (92%)	830 (97%)	22 (3%)	46	26

5 of 22 residues with a non-rotameric sidechain are listed below:

Mol	Chain	Res	Type
1	C	332	ASP
1	C	515	ARG
1	C	437	MET
1	C	525	LEU
1	A	525	LEU

Sometimes sidechains can be flipped to improve hydrogen bonding and reduce clashes. All (5) such sidechains are listed below:

Mol	Chain	Res	Type
1	C	359	ASN
1	C	398	HIS
1	C	519	ASN
1	D	373	HIS
1	D	519	ASN

5.3.3 RNA [i](#)

There are no RNA molecules in this entry.

5.4 Non-standard residues in protein, DNA, RNA chains [i](#)

6 non-standard protein/DNA/RNA residues are modelled in this entry.

In the following table, the Counts columns list the number of bonds (or angles) for which Mogul statistics could be retrieved, the number of bonds (or angles) that are observed in the model and the number of bonds (or angles) that are defined in the Chemical Component Dictionary. The Link column lists molecule types, if any, to which the group is linked. The Z score for a bond length (or angle) is the number of standard deviations the observed value is removed from the expected value. A bond length (or angle) with $|Z| > 2$ is considered an outlier worth inspection. RMSZ is the root-mean-square of all Z scores of the bond lengths (or angles).

Mol	Type	Chain	Res	Link	Bond lengths			Bond angles		
					Counts	RMSZ	$\# Z > 2$	Counts	RMSZ	$\# Z > 2$
1	YCM	B	381	1	7,9,10	0.58	0	4,10,12	0.28	0
1	YCM	B	530	1	7,9,10	0.46	0	4,10,12	0.51	0
1	YCM	D	381	1	7,9,10	0.58	0	4,10,12	0.24	0
1	YCM	C	381	1	7,9,10	0.47	0	4,10,12	0.34	0
1	YCM	D	530	1	7,9,10	0.49	0	4,10,12	0.60	0
1	YCM	A	381	1	7,9,10	0.45	0	4,10,12	0.31	0

In the following table, the Chirals column lists the number of chiral outliers, the number of chiral centers analysed, the number of these observed in the model and the number defined in the

Chemical Component Dictionary. Similar counts are reported in the Torsion and Rings columns. '-' means no outliers of that kind were identified.

Mol	Type	Chain	Res	Link	Chirals	Torsions	Rings
1	YCM	B	381	1	-	1/6/8/10	-
1	YCM	B	530	1	-	1/6/8/10	-
1	YCM	D	381	1	-	1/6/8/10	-
1	YCM	C	381	1	-	2/6/8/10	-
1	YCM	D	530	1	-	1/6/8/10	-
1	YCM	A	381	1	-	2/6/8/10	-

There are no bond length outliers.

There are no bond angle outliers.

There are no chirality outliers.

5 of 8 torsion outliers are listed below:

Mol	Chain	Res	Type	Atoms
1	A	381	YCM	CE-CD-SG-CB
1	A	381	YCM	SG-CD-CE-NZ2
1	B	381	YCM	SG-CD-CE-NZ2
1	C	381	YCM	CE-CD-SG-CB
1	C	381	YCM	SG-CD-CE-NZ2

There are no ring outliers.

1 monomer is involved in 1 short contact:

Mol	Chain	Res	Type	Clashes	Symm-Clashes
1	C	381	YCM	1	0

5.5 Carbohydrates [i](#)

There are no monosaccharides in this entry.

5.6 Ligand geometry [i](#)

4 ligands are modelled in this entry.

In the following table, the Counts columns list the number of bonds (or angles) for which Mogul statistics could be retrieved, the number of bonds (or angles) that are observed in the model and the number of bonds (or angles) that are defined in the Chemical Component Dictionary. The Link column lists molecule types, if any, to which the group is linked. The Z score for a bond length (or angle) is the number of standard deviations the observed value is removed from the

expected value. A bond length (or angle) with $|Z| > 2$ is considered an outlier worth inspection. RMSZ is the root-mean-square of all Z scores of the bond lengths (or angles).

Mol	Type	Chain	Res	Link	Bond lengths			Bond angles		
					Counts	RMSZ	# Z > 2	Counts	RMSZ	# Z > 2
2	7I5	B	601	-	42,45,45	2.82	21 (50%)	55,68,68	2.34	18 (32%)
2	7I5	D	601	-	42,45,45	3.07	18 (42%)	55,68,68	2.45	15 (27%)
2	7I5	C	601	-	34,37,45	3.18	23 (67%)	43,56,68	3.19	14 (32%)
2	7I5	A	601	-	34,37,45	3.04	21 (61%)	43,56,68	2.99	14 (32%)

In the following table, the Chirals column lists the number of chiral outliers, the number of chiral centers analysed, the number of these observed in the model and the number defined in the Chemical Component Dictionary. Similar counts are reported in the Torsion and Rings columns. '-' means no outliers of that kind were identified.

Mol	Type	Chain	Res	Link	Chirals	Torsions	Rings
2	7I5	B	601	-	-	4/32/58/58	0/6/5/5
2	7I5	D	601	-	-	7/32/58/58	0/6/5/5
2	7I5	C	601	-	-	6/22/48/58	0/6/5/5
2	7I5	A	601	-	-	6/22/48/58	0/6/5/5

The worst 5 of 83 bond length outliers are listed below:

Mol	Chain	Res	Type	Atoms	Z	Observed(Å)	Ideal(Å)
2	A	601	7I5	C02-C01	8.33	1.59	1.50
2	D	601	7I5	C02-C01	8.02	1.59	1.50
2	C	601	7I5	C02-C01	7.63	1.59	1.50
2	B	601	7I5	C02-C01	7.52	1.58	1.50
2	D	601	7I5	C23-N22	6.11	1.53	1.44

The worst 5 of 61 bond angle outliers are listed below:

Mol	Chain	Res	Type	Atoms	Z	Observed(°)	Ideal(°)
2	C	601	7I5	O34-S32-O33	-13.91	110.28	119.22
2	A	601	7I5	O34-S32-O33	-12.09	111.45	119.22
2	D	601	7I5	O34-S32-O33	-9.39	113.18	119.22
2	C	601	7I5	O33-S32-N22	7.92	116.62	107.08
2	B	601	7I5	O34-S32-O33	-7.23	114.57	119.22

There are no chirality outliers.

5 of 23 torsion outliers are listed below:

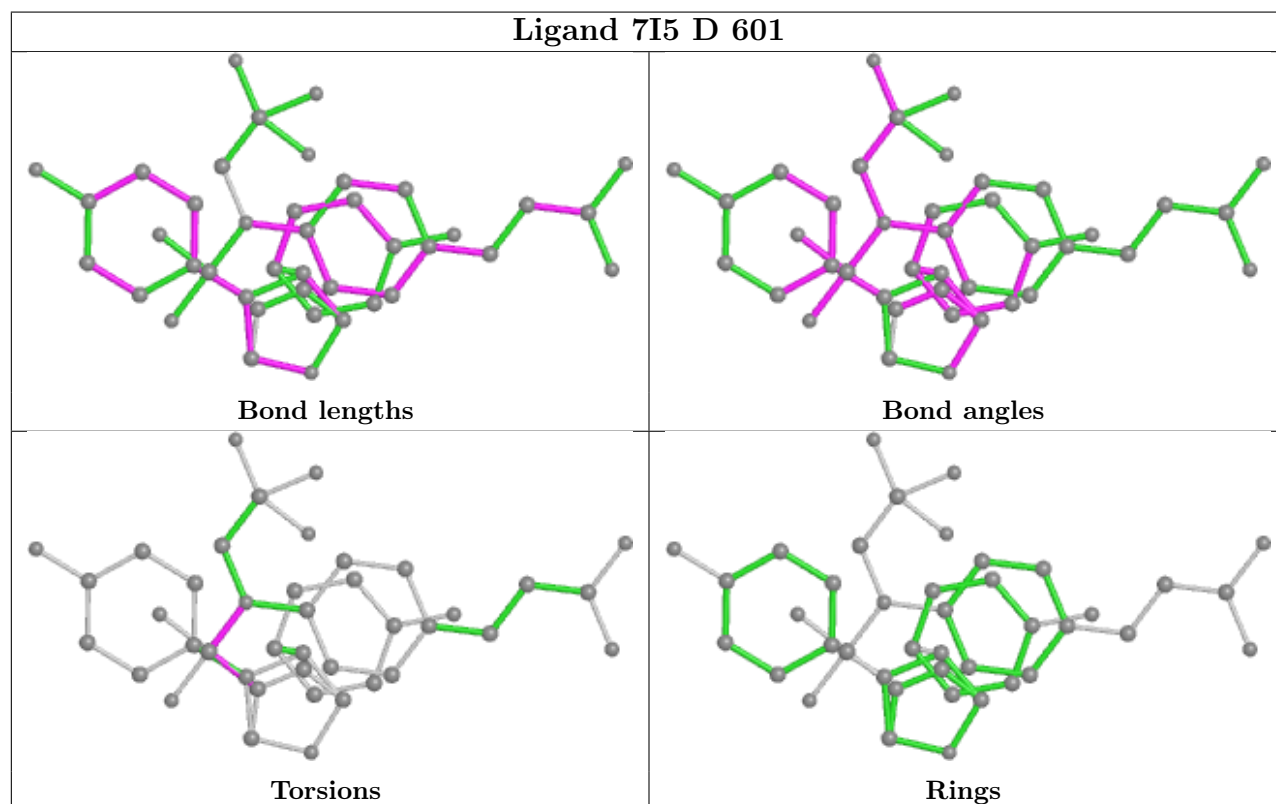
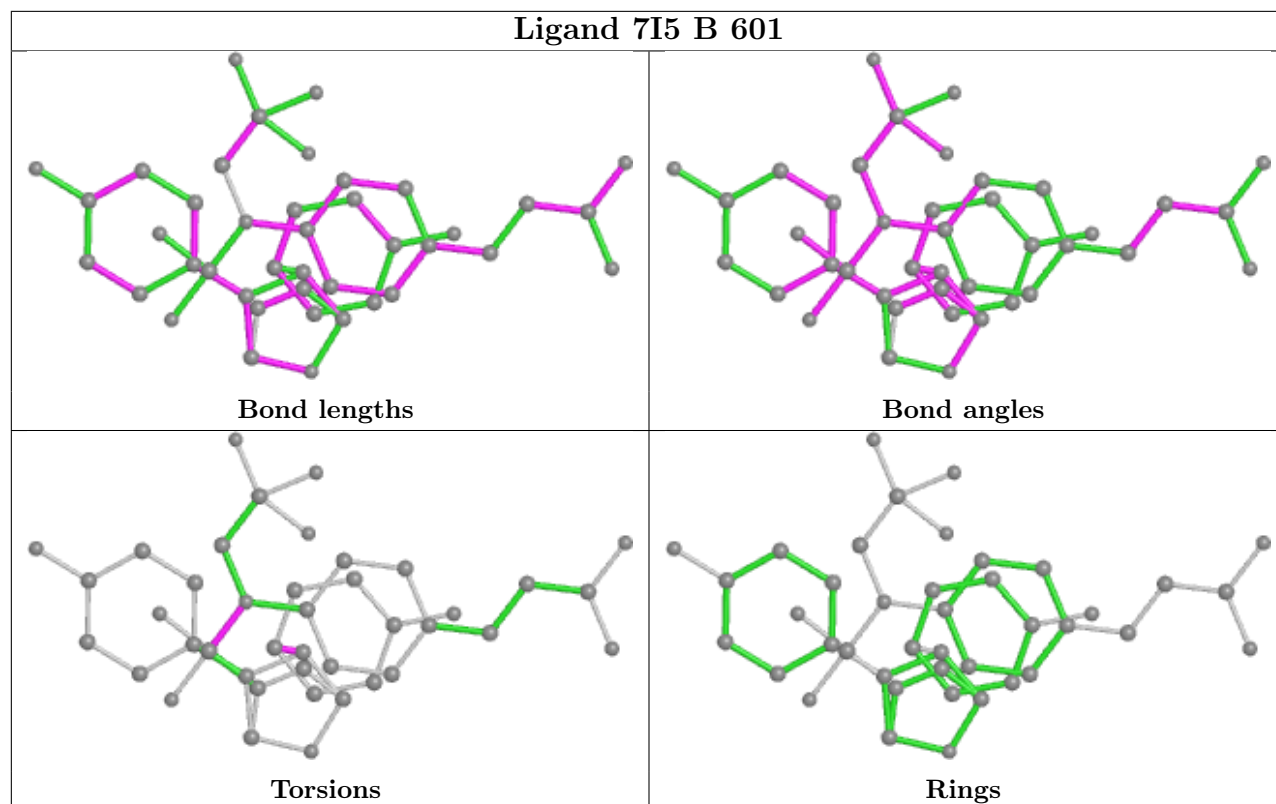
Mol	Chain	Res	Type	Atoms
2	A	601	7I5	C24-N22-S32-C03
2	A	601	7I5	C23-N22-S32-C03
2	A	601	7I5	C24-N22-S32-O33
2	A	601	7I5	C23-N22-S32-O33
2	C	601	7I5	C25-C23-N22-S32

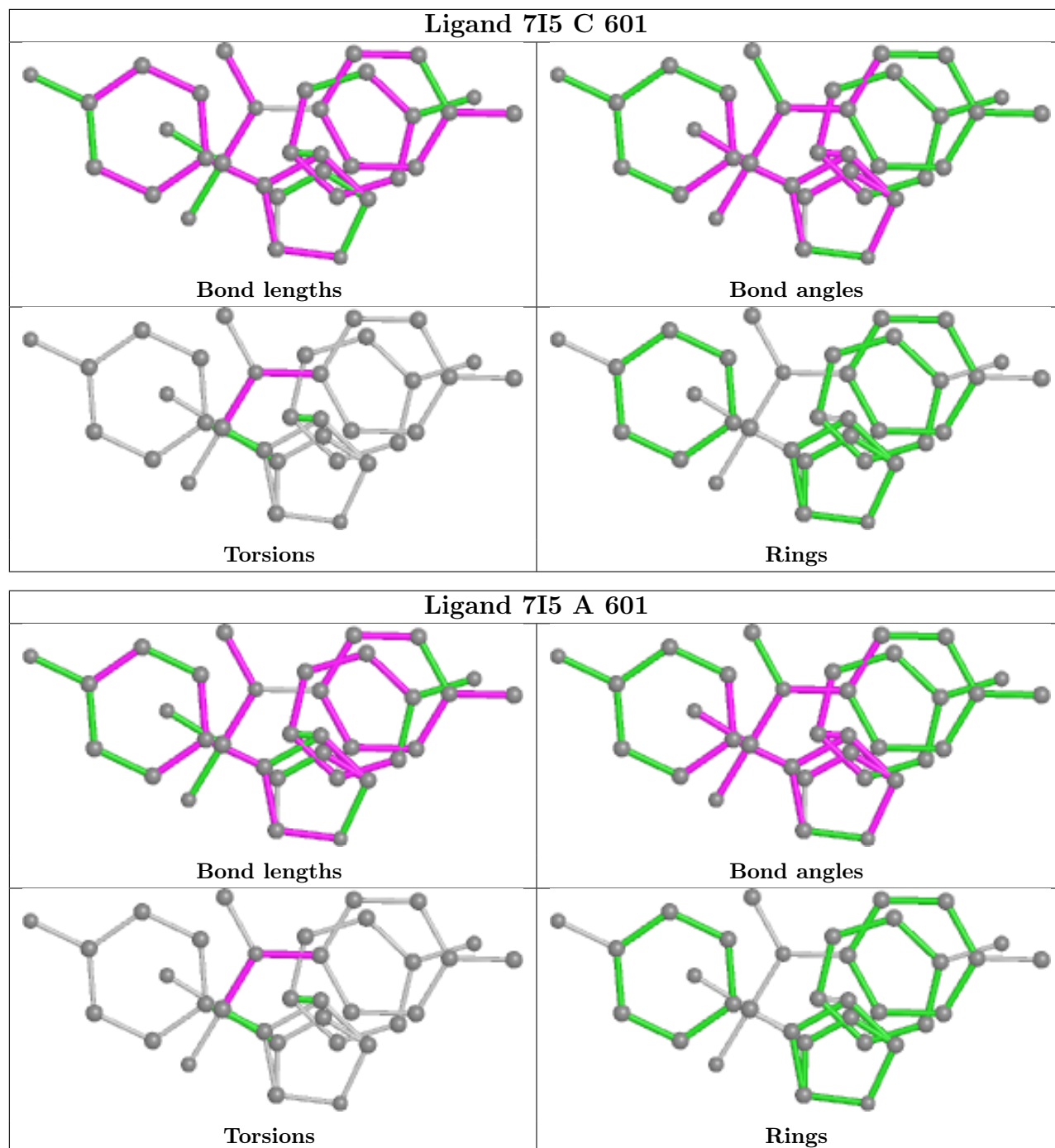
There are no ring outliers.

4 monomers are involved in 8 short contacts:

Mol	Chain	Res	Type	Clashes	Symm-Clashes
2	B	601	7I5	1	0
2	D	601	7I5	3	0
2	C	601	7I5	1	0
2	A	601	7I5	3	0

The following is a two-dimensional graphical depiction of Mogul quality analysis of bond lengths, bond angles, torsion angles, and ring geometry for all instances of the Ligand of Interest. In addition, ligands with molecular weight > 250 and outliers as shown on the validation Tables will also be included. For torsion angles, if less than 5% of the Mogul distribution of torsion angles is within 10 degrees of the torsion angle in question, then that torsion angle is considered an outlier. Any bond that is central to one or more torsion angles identified as an outlier by Mogul will be highlighted in the graph. For rings, the root-mean-square deviation (RMSD) between the ring in question and similar rings identified by Mogul is calculated over all ring torsion angles. If the average RMSD is greater than 60 degrees and the minimal RMSD between the ring in question and any Mogul-identified rings is also greater than 60 degrees, then that ring is considered an outlier. The outliers are highlighted in purple. The color gray indicates Mogul did not find sufficient equivalents in the CSD to analyse the geometry.





5.7 Other polymers [i](#)

There are no such residues in this entry.

5.8 Polymer linkage issues [i](#)

There are no chain breaks in this entry.

6 Fit of model and data [i](#)

6.1 Protein, DNA and RNA chains [i](#)

In the following table, the column labelled ‘#RSRZ > 2’ contains the number (and percentage) of RSRZ outliers, followed by percent RSRZ outliers for the chain as percentile scores relative to all X-ray entries and entries of similar resolution. The OWAB column contains the minimum, median, 95th percentile and maximum values of the occupancy-weighted average B-factor per residue. The column labelled ‘Q < 0.9’ lists the number of (and percentage) of residues with an average occupancy less than 0.9.

Mol	Chain	Analysed	<RSRZ>	#RSRZ>2	OWAB(Å ²)	Q<0.9
1	A	244/260 (93%)	0.47	20 (8%) 11 13	14, 25, 62, 84	0
1	B	228/260 (87%)	0.45	13 (5%) 23 26	14, 26, 65, 101	0
1	C	246/260 (94%)	0.64	30 (12%) 4 4	16, 29, 67, 100	0
1	D	232/260 (89%)	0.47	18 (7%) 13 15	14, 28, 60, 104	0
All	All	950/1040 (91%)	0.51	81 (8%) 10 12	14, 27, 65, 104	0

The worst 5 of 81 RSRZ outliers are listed below:

Mol	Chain	Res	Type	RSRZ
1	C	526	TYR	9.9
1	A	418	VAL	8.8
1	D	303	LYS	8.6
1	A	420	GLY	8.3
1	C	418	VAL	7.5

6.2 Non-standard residues in protein, DNA, RNA chains [i](#)

In the following table, the Atoms column lists the number of modelled atoms in the group and the number defined in the chemical component dictionary. The B-factors column lists the minimum, median, 95th percentile and maximum values of B factors of atoms in the group. The column labelled ‘Q < 0.9’ lists the number of atoms with occupancy less than 0.9.

Mol	Type	Chain	Res	Atoms	RSCC	RSR	B-factors(Å ²)	Q<0.9
1	YCM	B	530	10/11	0.90	0.13	28,38,48,48	0
1	YCM	D	530	10/11	0.91	0.15	37,44,72,74	0
1	YCM	C	381	10/11	0.94	0.13	17,21,60,78	0
1	YCM	B	381	10/11	0.95	0.12	22,26,70,75	0
1	YCM	A	381	10/11	0.96	0.12	16,21,56,58	0
1	YCM	D	381	10/11	0.97	0.08	20,23,39,39	0

6.3 Carbohydrates [i](#)

There are no monosaccharides in this entry.

6.4 Ligands [i](#)

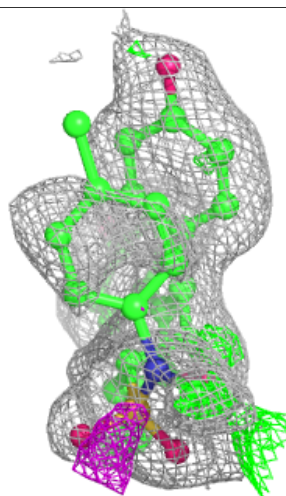
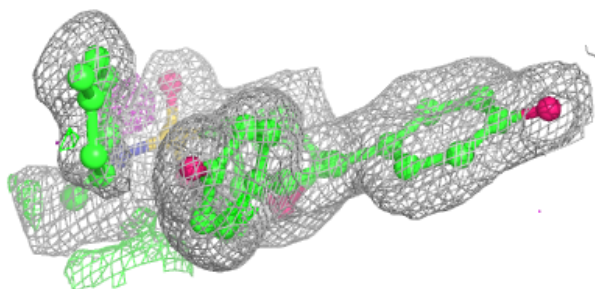
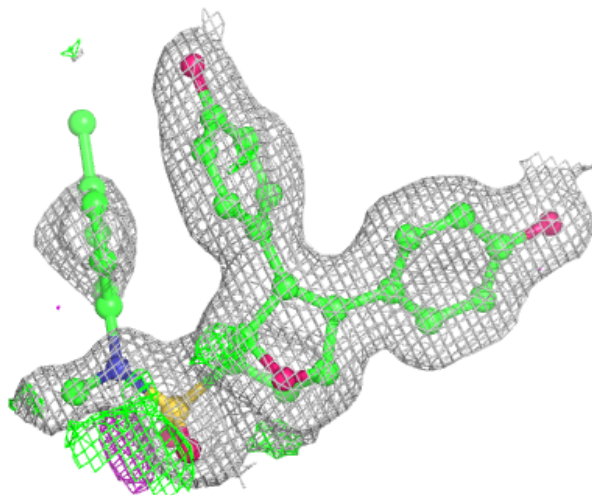
In the following table, the Atoms column lists the number of modelled atoms in the group and the number defined in the chemical component dictionary. The B-factors column lists the minimum, median, 95th percentile and maximum values of B factors of atoms in the group. The column labelled 'Q< 0.9' lists the number of atoms with occupancy less than 0.9.

Mol	Type	Chain	Res	Atoms	RSCC	RSR	B-factors(Å ²)	Q<0.9
2	7I5	C	601	33/41	0.92	0.13	16,26,67,83	0
2	7I5	A	601	33/41	0.93	0.12	15,25,51,65	0
2	7I5	D	601	41/41	0.93	0.12	20,34,57,81	0
2	7I5	B	601	41/41	0.95	0.11	15,32,48,63	0

The following is a graphical depiction of the model fit to experimental electron density of all instances of the Ligand of Interest. In addition, ligands with molecular weight > 250 and outliers as shown on the geometry validation Tables will also be included. Each fit is shown from different orientation to approximate a three-dimensional view.

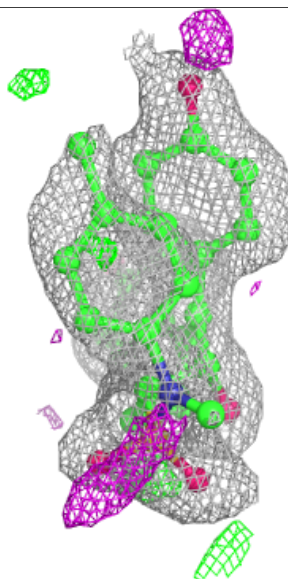
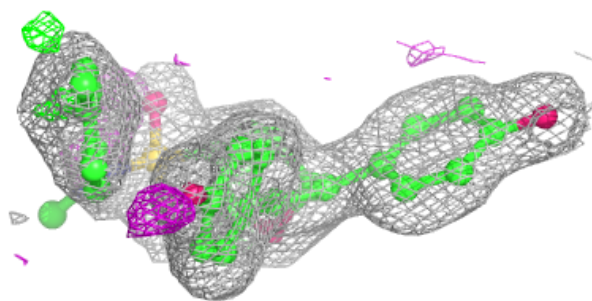
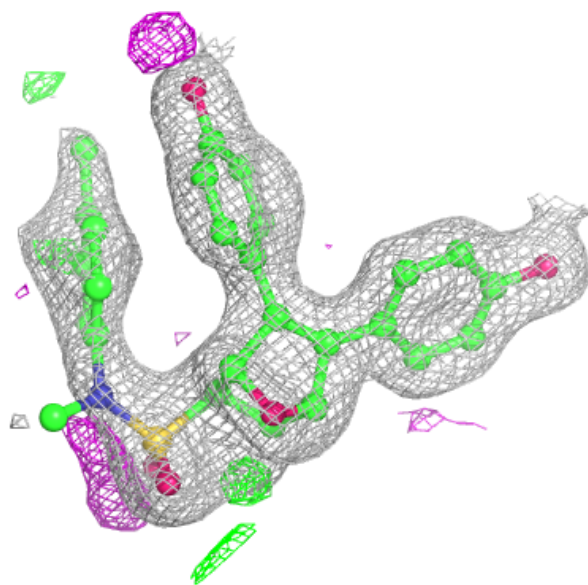
Electron density around 7I5 C 601:

$2mF_o-DF_c$ (at 0.7 rmsd) in gray
 mF_o-DF_c (at 3 rmsd) in purple (negative)
and green (positive)



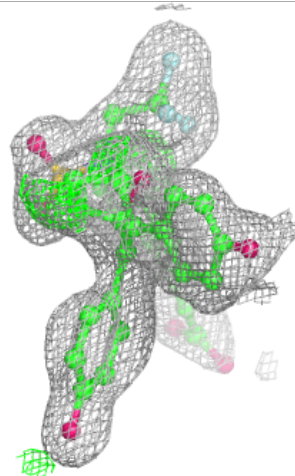
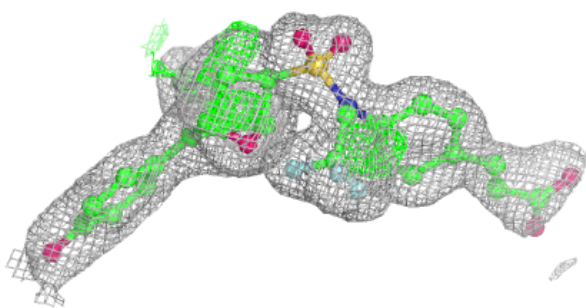
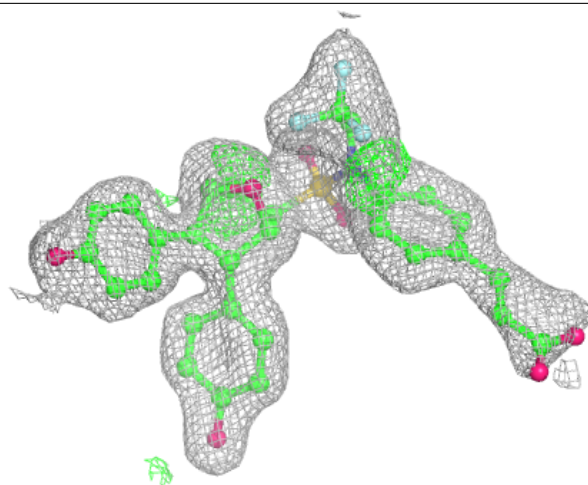
Electron density around 7I5 A 601:

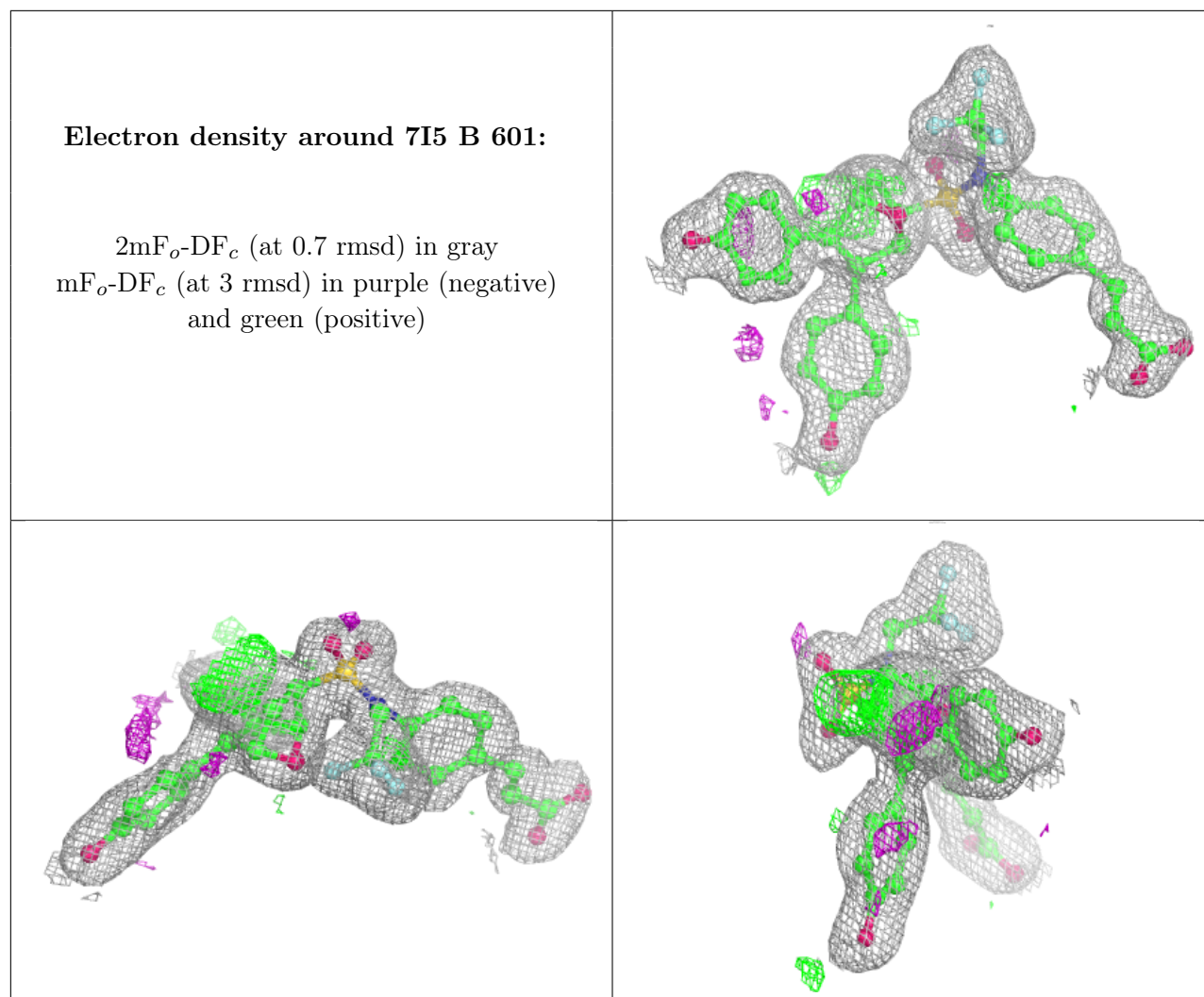
$2mF_o-DF_c$ (at 0.7 rmsd) in gray
 mF_o-DF_c (at 3 rmsd) in purple (negative)
and green (positive)



Electron density around 7I5 D 601:

$2mF_o-DF_c$ (at 0.7 rmsd) in gray
 mF_o-DF_c (at 3 rmsd) in purple (negative)
and green (positive)





6.5 Other polymers [i](#)

There are no such residues in this entry.