



# Full wwPDB X-ray Structure Validation Report ⓘ

Mar 9, 2024 – 03:14 PM EST

PDB ID : 3RV6  
Title : Structure of a M. tuberculosis Salicylate Synthase, MbtI, in Complex with an Inhibitor with Phenyl R-Group  
Authors : Chi, G.; Bulloch, E.M.M.; Manos-Turvey, A.; Payne, R.J.; Lott, J.S.; TB Structural Genomics Consortium (TBSGC)  
Deposited on : 2011-05-06  
Resolution : 2.04 Å(reported)

This is a Full wwPDB X-ray Structure Validation Report for a publicly released PDB entry.

We welcome your comments at [validation@mail.wwpdb.org](mailto:validation@mail.wwpdb.org)

A user guide is available at

<https://www.wwpdb.org/validation/2017/XrayValidationReportHelp>

with specific help available everywhere you see the ⓘ symbol.

The types of validation reports are described at

<http://www.wwpdb.org/validation/2017/FAQs#types>.

---

The following versions of software and data (see [references ⓘ](#)) were used in the production of this report:

MolProbity : 4.02b-467  
Mogul : 1.8.5 (274361), CSD as541be (2020)  
Xtriage (Phenix) : 1.13  
EDS : 2.36  
buster-report : 1.1.7 (2018)  
Percentile statistics : 20191225.v01 (using entries in the PDB archive December 25th 2019)  
Refmac : 5.8.0158  
CCP4 : 7.0.044 (Gargrove)  
Ideal geometry (proteins) : Engh & Huber (2001)  
Ideal geometry (DNA, RNA) : Parkinson et al. (1996)  
Validation Pipeline (wwPDB-VP) : 2.36

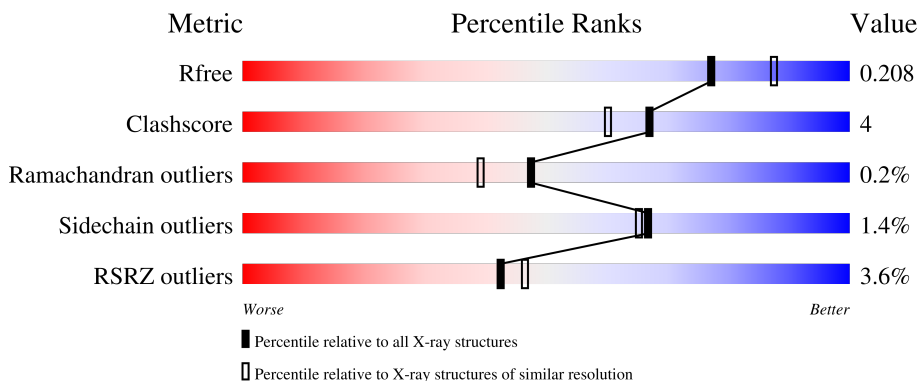
# 1 Overall quality at a glance

The following experimental techniques were used to determine the structure:

*X-RAY DIFFRACTION*

The reported resolution of this entry is 2.04 Å.

Percentile scores (ranging between 0-100) for global validation metrics of the entry are shown in the following graphic. The table shows the number of entries on which the scores are based.



Metric	Whole archive (#Entries)	Similar resolution (#Entries, resolution range(Å))
$R_{free}$	130704	1692 (2.04-2.04)
Clashscore	141614	1773 (2.04-2.04)
Ramachandran outliers	138981	1752 (2.04-2.04)
Sidechain outliers	138945	1752 (2.04-2.04)
RSRZ outliers	127900	1672 (2.04-2.04)

The table below summarises the geometric issues observed across the polymeric chains and their fit to the electron density. The red, orange, yellow and green segments of the lower bar indicate the fraction of residues that contain outliers for  $\geq 3$ , 2, 1 and 0 types of geometric quality criteria respectively. A grey segment represents the fraction of residues that are not modelled. The numeric value for each fraction is indicated below the corresponding segment, with a dot representing fractions  $\leq 5\%$ . The upper red bar (where present) indicates the fraction of residues that have poor fit to the electron density. The numeric value is given above the bar.

Mol	Chain	Length	Quality of chain
1	A	450	 3% 86% 6% 7%
1	B	450	 4% 84% 7% 8%

The following table lists non-polymeric compounds, carbohydrate monomers and non-standard residues in protein, DNA, RNA chains that are outliers for geometric or electron-density-fit criteria:

Mol	Type	Chain	Res	Chirality	Geometry	Clashes	Electron density
2	VAE	A	451	-	X	-	-
5	RVA	A	454	-	X	-	-

## 2 Entry composition [i](#)

There are 6 unique types of molecules in this entry. The entry contains 7015 atoms, of which 0 are hydrogens and 0 are deuteriums.

In the tables below, the ZeroOcc column contains the number of atoms modelled with zero occupancy, the AltConf column contains the number of residues with at least one atom in alternate conformation and the Trace column contains the number of residues modelled with at most 2 atoms.

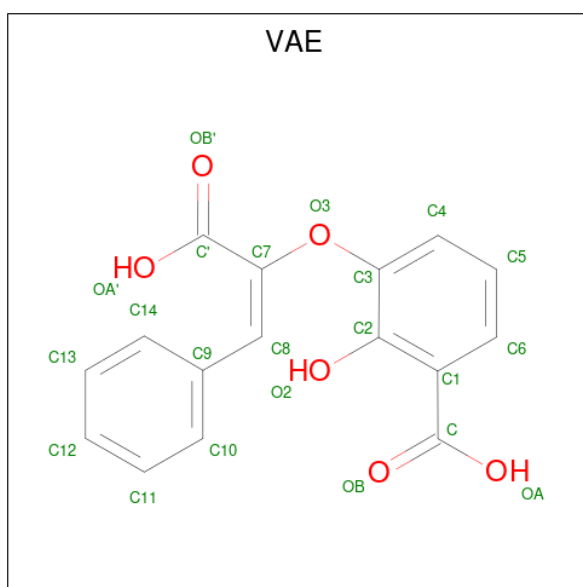
- Molecule 1 is a protein called Isochorismate synthase/isochorismate-pyruvate lyase mbtI.

Mol	Chain	Residues	Atoms					ZeroOcc	AltConf	Trace
			Total	C	N	O	S			
1	A	417	Total 3158	C 1983	N 566	O 599	S 10	0	2	0
1	B	413	Total 3122	C 1962	N 557	O 593	S 10	0	1	0

There are 2 discrepancies between the modelled and reference sequences:

Chain	Residue	Modelled	Actual	Comment	Reference
A	1	VAL	-	expression tag	UNP Q7D785
B	1	VAL	-	expression tag	UNP Q7D785

- Molecule 2 is 3-[[*(E)*-1-carboxy-2-phenylethenyl]oxy]-2-hydroxybenzoic acid (three-letter code: VAE) (formula: C<sub>16</sub>H<sub>12</sub>O<sub>6</sub>).

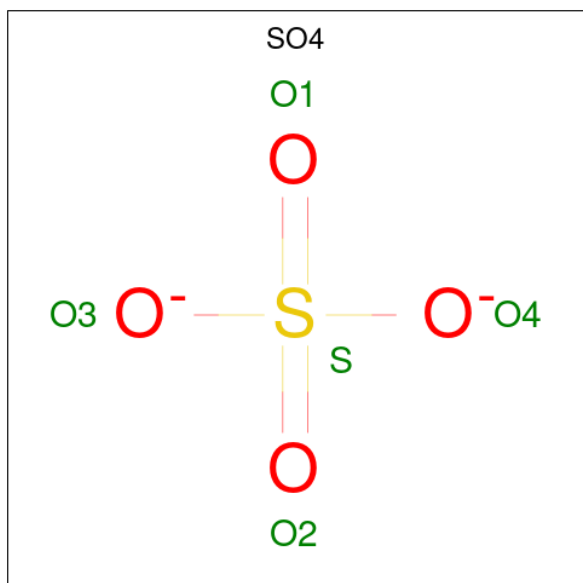


Mol	Chain	Residues	Atoms			ZeroOcc	AltConf
			Total	C	O		
2	A	1	Total 22	C 16	O 6	0	0

- Molecule 3 is MAGNESIUM ION (three-letter code: MG) (formula: Mg).

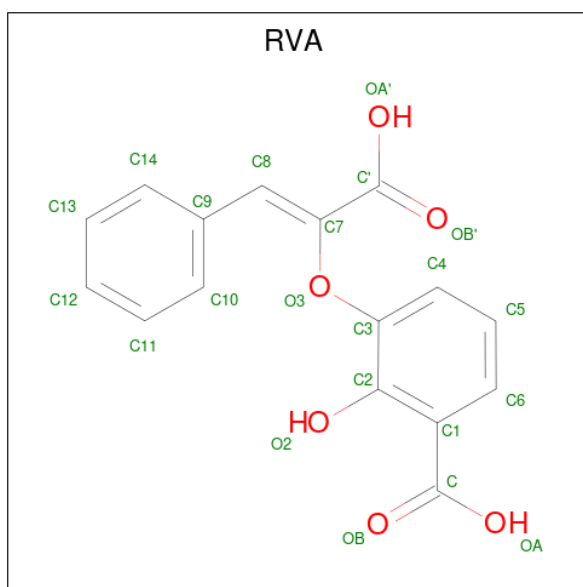
Mol	Chain	Residues	Atoms		ZeroOcc	AltConf
3	A	1	Total	Mg	0	0
			1	1		
3	B	1	Total	Mg	0	0
			1	1		

- Molecule 4 is SULFATE ION (three-letter code: SO4) (formula: O<sub>4</sub>S).



Mol	Chain	Residues	Atoms			ZeroOcc	AltConf
4	A	1	Total	O	S	0	0
			5	4	1		

- Molecule 5 is 3-{{(Z)-1-carboxy-2-phenylethenyl}oxy}-2-hydroxybenzoic acid (three-letter code: RVA) (formula: C<sub>16</sub>H<sub>12</sub>O<sub>6</sub>).



Mol	Chain	Residues	Atoms	ZeroOcc	AltConf
5	A	1	Total C O 22 16 6	0	0
5	A	1	Total C O 22 16 6	0	0
5	B	1	Total C O 22 16 6	0	0
5	B	1	Total C O 22 16 6	0	0


- Molecule 6 is water.

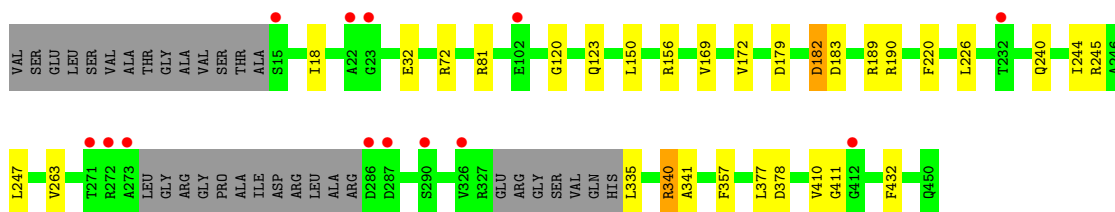
Mol	Chain	Residues	Atoms	ZeroOcc	AltConf
6	A	328	Total O 328 328	0	0
6	B	290	Total O 290 290	0	0

### 3 Residue-property plots [i](#)


These plots are drawn for all protein, RNA, DNA and oligosaccharide chains in the entry. The first graphic for a chain summarises the proportions of the various outlier classes displayed in the second graphic. The second graphic shows the sequence view annotated by issues in geometry and electron density. Residues are color-coded according to the number of geometric quality criteria for which they contain at least one outlier: green = 0, yellow = 1, orange = 2 and red = 3 or more. A red dot above a residue indicates a poor fit to the electron density ( $RSRZ > 2$ ). Stretches of 2 or more consecutive residues without any outlier are shown as a green connector. Residues present in the sample, but not in the model, are shown in grey.

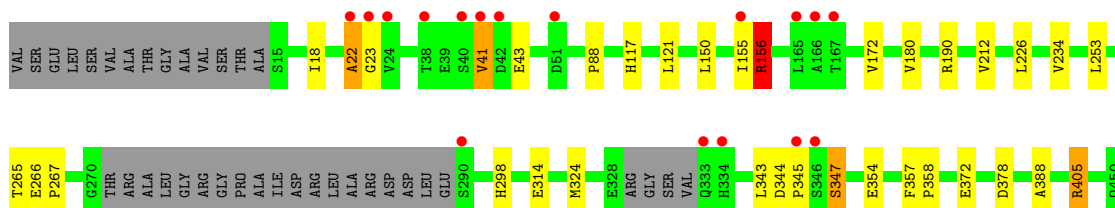
- Molecule 1: Isochorismate synthase/isochorismate-pyruvate lyase mbtI

Chain A: 



- Molecule 1: Isochorismate synthase/isochorismate-pyruvate lyase mbtI

Chain B: 



## 4 Data and refinement statistics i

Property	Value	Source
Space group	P 1 21 1	Depositor
Cell constants a, b, c, $\alpha$ , $\beta$ , $\gamma$	52.75Å 91.53Å 96.47Å 90.00° 104.83° 90.00°	Depositor
Resolution (Å)	16.72 – 2.04 16.71 – 2.04	Depositor EDS
% Data completeness (in resolution range)	(Not available) (16.72-2.04) 96.8 (16.71-2.04)	Depositor EDS
$R_{merge}$	(Not available)	Depositor
$R_{sym}$	(Not available)	Depositor
$\langle I/\sigma(I) \rangle$ <sup>1</sup>	2.28 (at 2.03Å)	Xtrriage
Refinement program	BUSTER 2.8.0	Depositor
R, $R_{free}$	0.171 , 0.205 0.176 , 0.208	Depositor DCC
$R_{free}$ test set	2762 reflections (5.07%)	wwPDB-VP
Wilson B-factor (Å <sup>2</sup> )	24.3	Xtrriage
Anisotropy	0.064	Xtrriage
Bulk solvent $k_{sol}$ (e/Å <sup>3</sup> ), $B_{sol}$ (Å <sup>2</sup> )	0.37 , 62.7	EDS
L-test for twinning <sup>2</sup>	$\langle  L  \rangle = 0.52$ , $\langle L^2 \rangle = 0.36$	Xtrriage
Estimated twinning fraction	0.018 for h,-k,-h-l	Xtrriage
$F_o, F_c$ correlation	0.96	EDS
Total number of atoms	7015	wwPDB-VP
Average B, all atoms (Å <sup>2</sup> )	29.0	wwPDB-VP

Xtrriage's analysis on translational NCS is as follows: *The largest off-origin peak in the Patterson function is 4.89% of the height of the origin peak. No significant pseudotranslation is detected.*

<sup>1</sup>Intensities estimated from amplitudes.

<sup>2</sup>Theoretical values of  $\langle |L| \rangle$ ,  $\langle L^2 \rangle$  for acentric reflections are 0.5, 0.333 respectively for untwinned datasets, and 0.375, 0.2 for perfectly twinned datasets.



## 5 Model quality [i](#)

### 5.1 Standard geometry [i](#)

Bond lengths and bond angles in the following residue types are not validated in this section: RVA, VAE, SO4, MG

The Z score for a bond length (or angle) is the number of standard deviations the observed value is removed from the expected value. A bond length (or angle) with  $|Z| > 5$  is considered an outlier worth inspection. RMSZ is the root-mean-square of all Z scores of the bond lengths (or angles).

Mol	Chain	Bond lengths		Bond angles	
		RMSZ	# Z  >5	RMSZ	# Z  >5
1	A	0.65	1/3212 (0.0%)	0.70	1/4365 (0.0%)
1	B	0.64	1/3177 (0.0%)	0.70	1/4319 (0.0%)
All	All	0.65	2/6389 (0.0%)	0.70	2/8684 (0.0%)

All (2) bond length outliers are listed below:

Mol	Chain	Res	Type	Atoms	Z	Observed(Å)	Ideal(Å)
1	B	354	GLU	CD-OE2	-5.67	1.19	1.25
1	A	263	VAL	CB-CG2	-5.23	1.41	1.52

All (2) bond angle outliers are listed below:

Mol	Chain	Res	Type	Atoms	Z	Observed(°)	Ideal(°)
1	A	182	ASP	CB-CG-OD2	6.17	123.85	118.30
1	B	156	ARG	CB-CA-C	5.12	120.63	110.40

There are no chirality outliers.

There are no planarity outliers.

### 5.2 Too-close contacts [i](#)

In the following table, the Non-H and H(model) columns list the number of non-hydrogen atoms and hydrogen atoms in the chain respectively. The H(added) column lists the number of hydrogen atoms added and optimized by MolProbity. The Clashes column lists the number of clashes within the asymmetric unit, whereas Symm-Clashes lists symmetry-related clashes.

Mol	Chain	Non-H	H(model)	H(added)	Clashes	Symm-Clashes
1	A	3158	0	3136	19	0
1	B	3122	0	3079	29	0

*Continued on next page...*

*Continued from previous page...*

Mol	Chain	Non-H	H(model)	H(added)	Clashes	Symm-Clashes
2	A	22	0	10	0	0
3	A	1	0	0	0	0
3	B	1	0	0	0	0
4	A	5	0	0	0	0
5	A	44	0	19	5	0
5	B	44	0	20	0	0
6	A	328	0	0	4	0
6	B	290	0	0	1	0
All	All	7015	0	6264	49	0

The all-atom clashscore is defined as the number of clashes found per 1000 atoms (including hydrogen atoms). The all-atom clashscore for this structure is 4.

All (49) close contacts within the same asymmetric unit are listed below, sorted by their clash magnitude.

Atom-1	Atom-2	Interatomic distance (Å)	Clash overlap (Å)
1:B:22:ALA:CB	1:B:23:GLY:HA3	1.94	0.96
1:A:123:GLN:NE2	6:A:576:HOH:O	2.01	0.91
1:B:22:ALA:HB1	1:B:23:GLY:HA3	1.51	0.88
1:A:179:ASP:O	6:A:467:HOH:O	2.06	0.74
1:B:253:LEU:HD11	1:B:265:THR:HG22	1.70	0.73
1:A:340:ARG:C	1:A:340:ARG:HD3	2.12	0.70
5:A:455:RVA:H14	5:A:455:RVA:O3	1.93	0.69
1:B:155:ILE:O	1:B:156:ARG:C	2.32	0.67
1:B:22:ALA:CB	1:B:23:GLY:CA	2.75	0.63
1:B:22:ALA:HB3	1:B:23:GLY:HA3	1.78	0.63
1:B:298:HIS:HD2	1:B:324:MET:HG2	1.63	0.63
1:A:156:ARG:CB	5:A:455:RVA:OA'	2.48	0.62
1:A:156:ARG:HB2	5:A:455:RVA:OA'	2.01	0.61
1:B:314:GLU:HG3	1:B:345:PRO:HD2	1.84	0.60
1:B:357:PHE:CZ	1:B:388:ALA:HB2	2.37	0.59
1:B:405:ARG:HG2	6:B:740:HOH:O	2.05	0.56
1:B:41:VAL:HB	1:B:43:GLU:HG3	1.90	0.54
1:B:253:LEU:HD11	1:B:265:THR:CG2	2.36	0.53
1:B:88:PRO:HD2	1:B:117:HIS:CE1	2.45	0.52
1:A:182:ASP:HB3	6:A:467:HOH:O	2.09	0.52
1:B:298:HIS:CD2	1:B:324:MET:HG2	2.44	0.52
1:A:32:GLU:HG3	1:A:169:VAL:HB	1.91	0.51
1:A:189:ARG:HD2	6:A:483:HOH:O	2.10	0.51
1:A:18:ILE:HD12	1:A:150:LEU:HD11	1.95	0.49
1:B:266:GLU:HB2	1:B:267:PRO:HA	1.96	0.48

*Continued on next page...*

Continued from previous page...

Atom-1	Atom-2	Interatomic distance (Å)	Clash overlap (Å)
1:B:18:ILE:HD12	1:B:150:LEU:HD11	1.97	0.46
1:B:405:ARG:HA	1:B:405:ARG:NE	2.32	0.45
1:B:344:ASP:HB3	1:B:347:SER:HB2	1.99	0.45
5:A:455:RVA:O3	5:A:455:RVA:C14	2.61	0.45
1:B:344:ASP:HA	1:B:345:PRO:HD2	1.66	0.45
1:A:340:ARG:HD3	1:A:341:ALA:N	2.32	0.45
1:A:156:ARG:N	5:A:455:RVA:OA'	2.45	0.45
1:B:22:ALA:HB1	1:B:23:GLY:CA	2.35	0.45
1:B:357:PHE:CE1	1:B:388:ALA:HB2	2.51	0.45
1:A:72:ARG:HG2	1:A:81:ARG:HG2	1.99	0.44
1:A:244:ILE:HG12	1:A:410:VAL:HG22	2.00	0.44
1:A:190:ARG:HD2	1:A:377:LEU:O	2.18	0.44
1:B:343:LEU:O	1:B:345:PRO:HD3	2.18	0.43
1:A:120:GLY:HA3	1:B:190:ARG:HG2	2.00	0.43
1:B:180:VAL:HG12	1:B:212:VAL:HG11	2.00	0.43
1:A:220:PHE:CD1	1:A:247:LEU:HD23	2.55	0.41
1:B:357:PHE:HA	1:B:358:PRO:C	2.41	0.41
1:A:240:GLN:OE1	1:A:245:ARG:CZ	2.69	0.41
1:B:234:VAL:HG21	1:B:267:PRO:HD3	2.01	0.41
1:A:172:VAL:HG11	1:A:226:LEU:HB2	2.04	0.40
1:A:183:ASP:HB2	1:A:432:PHE:CE2	2.56	0.40
1:B:405:ARG:HA	1:B:405:ARG:CZ	2.51	0.40
1:B:172:VAL:HG11	1:B:226:LEU:HB2	2.04	0.40
1:B:121:LEU:HD21	1:B:372:GLU:HG2	2.03	0.40

There are no symmetry-related clashes.

## 5.3 Torsion angles [i](#)

### 5.3.1 Protein backbone [i](#)

In the following table, the Percentiles column shows the percent Ramachandran outliers of the chain as a percentile score with respect to all X-ray entries followed by that with respect to entries of similar resolution.

The Analysed column shows the number of residues for which the backbone conformation was analysed, and the total number of residues.

Mol	Chain	Analysed	Favoured	Allowed	Outliers	Percentiles
1	A	413/450 (92%)	406 (98%)	6 (2%)	1 (0%)	47 39

Continued on next page...

Continued from previous page...

Mol	Chain	Analysed	Favoured	Allowed	Outliers	Percentiles	
1	B	408/450 (91%)	402 (98%)	5 (1%)	1 (0%)	47	39
All	All	821/900 (91%)	808 (98%)	11 (1%)	2 (0%)	47	39

All (2) Ramachandran outliers are listed below:

Mol	Chain	Res	Type
1	A	411	GLY
1	B	22	ALA

### 5.3.2 Protein sidechains [i](#)

In the following table, the Percentiles column shows the percent sidechain outliers of the chain as a percentile score with respect to all X-ray entries followed by that with respect to entries of similar resolution.

The Analysed column shows the number of residues for which the sidechain conformation was analysed, and the total number of residues.

Mol	Chain	Analysed	Rotameric	Outliers	Percentiles	
1	A	324/358 (90%)	320 (99%)	4 (1%)	71	70
1	B	319/358 (89%)	314 (98%)	5 (2%)	62	59
All	All	643/716 (90%)	634 (99%)	9 (1%)	67	65

All (9) residues with a non-rotameric sidechain are listed below:

Mol	Chain	Res	Type
1	A	335	LEU
1	A	340	ARG
1	A	357	PHE
1	A	378	ASP
1	B	41	VAL
1	B	156	ARG
1	B	347	SER
1	B	378	ASP
1	B	405	ARG

Sometimes sidechains can be flipped to improve hydrogen bonding and reduce clashes. All (4) such sidechains are listed below:

Mol	Chain	Res	Type
1	A	128	HIS
1	B	117	HIS
1	B	334	HIS
1	B	450	GLN

### 5.3.3 RNA [i](#)

There are no RNA molecules in this entry.

## 5.4 Non-standard residues in protein, DNA, RNA chains [i](#)

There are no non-standard protein/DNA/RNA residues in this entry.

## 5.5 Carbohydrates [i](#)

There are no monosaccharides in this entry.

## 5.6 Ligand geometry [i](#)

Of 8 ligands modelled in this entry, 2 are monoatomic - leaving 6 for Mogul analysis.

In the following table, the Counts columns list the number of bonds (or angles) for which Mogul statistics could be retrieved, the number of bonds (or angles) that are observed in the model and the number of bonds (or angles) that are defined in the Chemical Component Dictionary. The Link column lists molecule types, if any, to which the group is linked. The Z score for a bond length (or angle) is the number of standard deviations the observed value is removed from the expected value. A bond length (or angle) with  $|Z| > 2$  is considered an outlier worth inspection. RMSZ is the root-mean-square of all Z scores of the bond lengths (or angles).

Mol	Type	Chain	Res	Link	Bond lengths			Bond angles		
					Counts	RMSZ	# Z  > 2	Counts	RMSZ	# Z  > 2
5	RVA	A	454	-	23,23,23	4.25	18 (78%)	30,31,31	2.09	13 (43%)
5	RVA	B	451	-	23,23,23	4.12	17 (73%)	30,31,31	1.72	7 (23%)
4	SO4	A	453	-	4,4,4	0.25	0	6,6,6	0.16	0
2	VAE	A	451	-	23,23,23	4.13	16 (69%)	30,31,31	2.13	8 (26%)
5	RVA	B	453	-	23,23,23	4.11	16 (69%)	30,31,31	1.66	7 (23%)
5	RVA	A	455	-	23,23,23	2.21	7 (30%)	30,31,31	1.75	6 (20%)

In the following table, the Chirals column lists the number of chiral outliers, the number of chiral centers analysed, the number of these observed in the model and the number defined in the

Chemical Component Dictionary. Similar counts are reported in the Torsion and Rings columns. '-' means no outliers of that kind were identified.

Mol	Type	Chain	Res	Link	Chirals	Torsions	Rings
5	RVA	A	454	-	-	2/16/16/16	0/2/2/2
5	RVA	B	451	-	-	2/16/16/16	0/2/2/2
2	VAE	A	451	-	-	5/16/16/16	0/2/2/2
5	RVA	B	453	-	-	0/16/16/16	0/2/2/2
5	RVA	A	455	-	-	2/16/16/16	0/2/2/2

All (74) bond length outliers are listed below:

Mol	Chain	Res	Type	Atoms	Z	Observed(Å)	Ideal(Å)
5	A	454	RVA	C10-C9	9.02	1.57	1.39
5	A	454	RVA	C13-C14	7.89	1.55	1.38
2	A	451	VAE	C10-C9	7.75	1.54	1.39
5	B	451	RVA	C10-C9	7.38	1.53	1.39
2	A	451	VAE	C13-C14	7.32	1.54	1.38
5	B	453	RVA	C10-C9	7.27	1.53	1.39
5	B	451	RVA	C13-C14	7.13	1.53	1.38
5	B	453	RVA	C13-C14	6.95	1.53	1.38
5	B	451	RVA	O2-C2	6.84	1.52	1.37
2	A	451	VAE	C8-C7	-6.62	1.25	1.33
5	B	451	RVA	C3-C2	6.21	1.48	1.40
2	A	451	VAE	C5-C6	-6.10	1.26	1.38
5	A	454	RVA	C3-C2	6.07	1.48	1.40
5	B	453	RVA	C8-C7	-5.90	1.26	1.33
2	A	451	VAE	O2-C2	5.65	1.50	1.37
5	B	453	RVA	O2-C2	5.58	1.49	1.37
5	B	453	RVA	C6-C1	5.42	1.48	1.39
5	A	454	RVA	C6-C1	5.37	1.48	1.39
5	B	451	RVA	C8-C7	-5.36	1.27	1.33
5	B	453	RVA	C3-C2	5.32	1.47	1.40
5	B	453	RVA	C5-C6	-5.27	1.27	1.38
5	B	453	RVA	OB'-C'	-5.24	1.08	1.22
2	A	451	VAE	OB'-C'	-5.12	1.09	1.22
5	A	454	RVA	O3-C7	5.07	1.49	1.38
2	A	451	VAE	O3-C7	4.98	1.49	1.38
5	A	454	RVA	C5-C6	-4.97	1.28	1.38
5	A	455	RVA	C7-C'	4.93	1.60	1.48
5	B	451	RVA	O3-C7	4.88	1.49	1.38
5	B	451	RVA	C6-C1	4.87	1.47	1.39
5	B	453	RVA	O3-C7	4.78	1.49	1.38
5	A	454	RVA	C13-C12	4.55	1.50	1.38

*Continued on next page...*

*Continued from previous page...*

Mol	Chain	Res	Type	Atoms	Z	Observed(Å)	Ideal(Å)
5	B	453	RVA	OB-C	4.55	1.36	1.22
2	A	451	VAE	C13-C12	4.47	1.49	1.38
5	B	453	RVA	C13-C12	4.46	1.49	1.38
5	B	451	RVA	C5-C6	-4.46	1.29	1.38
2	A	451	VAE	C3-C2	4.34	1.46	1.40
5	B	451	RVA	OB'-C'	-4.28	1.11	1.22
5	A	454	RVA	OB-C	4.26	1.35	1.22
5	B	451	RVA	C5-C4	4.16	1.47	1.38
5	A	455	RVA	OA'-C'	-4.14	1.18	1.30
5	B	451	RVA	C7-C'	4.11	1.58	1.48
5	A	454	RVA	C9-C8	4.06	1.54	1.46
5	A	454	RVA	O2-C2	3.94	1.46	1.37
5	A	454	RVA	C7-C'	3.90	1.58	1.48
2	A	451	VAE	C7-C'	3.88	1.58	1.48
5	A	454	RVA	OB'-C'	-3.87	1.12	1.22
5	A	455	RVA	C9-C8	-3.86	1.39	1.46
5	A	455	RVA	OA-C	-3.80	1.19	1.30
5	A	455	RVA	O3-C3	-3.72	1.33	1.41
5	A	454	RVA	C5-C4	3.65	1.46	1.38
5	B	451	RVA	C13-C12	3.41	1.47	1.38
5	B	453	RVA	C5-C4	3.30	1.45	1.38
2	A	451	VAE	C6-C1	3.26	1.45	1.39
2	A	451	VAE	C5-C4	3.25	1.45	1.38
5	B	451	RVA	C1-C	-3.20	1.42	1.49
5	A	455	RVA	C8-C7	3.19	1.37	1.33
2	A	451	VAE	C4-C3	-3.07	1.33	1.39
2	A	451	VAE	C9-C8	3.07	1.52	1.46
5	A	454	RVA	C8-C7	-2.97	1.30	1.33
5	B	451	RVA	C9-C8	2.97	1.52	1.46
5	A	454	RVA	C4-C3	-2.74	1.33	1.39
5	B	453	RVA	OA'-C'	-2.69	1.22	1.30
5	A	454	RVA	C14-C9	2.68	1.44	1.39
5	B	453	RVA	OA-C	-2.65	1.22	1.30
5	B	453	RVA	C7-C'	2.63	1.55	1.48
5	B	451	RVA	C14-C9	2.61	1.44	1.39
5	A	454	RVA	OA'-C'	-2.59	1.23	1.30
5	A	455	RVA	C1-C	2.41	1.54	1.49
5	B	453	RVA	C14-C9	2.39	1.44	1.39
5	B	451	RVA	OA'-C'	-2.37	1.23	1.30
5	A	454	RVA	OA-C	-2.36	1.23	1.30
2	A	451	VAE	OA'-C'	-2.29	1.23	1.30
2	A	451	VAE	C1-C	-2.20	1.44	1.49

*Continued on next page...*

*Continued from previous page...*

Mol	Chain	Res	Type	Atoms	Z	Observed(Å)	Ideal(Å)
5	B	451	RVA	C1-C2	2.15	1.45	1.41

All (41) bond angle outliers are listed below:

Mol	Chain	Res	Type	Atoms	Z	Observed(°)	Ideal(°)
2	A	451	VAE	O3-C3-C4	6.20	134.03	118.86
5	A	454	RVA	O3-C3-C4	5.18	131.55	118.86
5	B	451	RVA	O3-C3-C4	5.12	131.38	118.86
5	A	455	RVA	O3-C7-C'	5.01	128.19	114.54
5	B	453	RVA	O3-C3-C4	5.01	131.12	118.86
2	A	451	VAE	O3-C3-C2	-4.23	109.55	117.65
5	A	455	RVA	C2-C1-C	4.04	124.28	119.83
5	A	454	RVA	C11-C10-C9	3.96	125.44	120.65
2	A	451	VAE	C4-C3-C2	-3.86	116.41	119.97
5	A	454	RVA	O3-C3-C2	-3.45	111.05	117.65
2	A	451	VAE	C11-C10-C9	3.41	124.78	120.65
2	A	451	VAE	C12-C13-C14	-3.39	115.03	120.19
5	B	451	RVA	O3-C3-C2	-3.24	111.46	117.65
5	B	451	RVA	C12-C13-C14	-3.20	115.31	120.19
5	B	453	RVA	O3-C3-C2	-3.18	111.57	117.65
5	B	451	RVA	C4-C3-C2	-3.11	117.10	119.97
5	B	453	RVA	C12-C13-C14	-2.93	115.72	120.19
5	A	454	RVA	C2-C1-C	2.90	123.03	119.83
2	A	451	VAE	C13-C12-C11	2.89	125.31	119.93
5	B	453	RVA	C4-C3-C2	-2.88	117.31	119.97
5	A	454	RVA	C4-C3-C2	-2.79	117.40	119.97
5	A	455	RVA	C9-C8-C7	-2.66	126.43	130.12
5	B	451	RVA	C13-C12-C11	2.62	124.79	119.93
5	A	454	RVA	OB-C-C1	-2.54	115.78	121.94
5	A	454	RVA	C6-C5-C4	2.53	123.84	120.25
5	A	454	RVA	C13-C12-C11	2.53	124.64	119.93
5	B	453	RVA	C11-C10-C9	2.53	123.71	120.65
5	A	455	RVA	C8-C7-C'	-2.47	115.78	122.73
5	A	455	RVA	OA'-C'-OB'	-2.41	118.09	123.61
5	A	454	RVA	C8-C7-C'	2.38	129.43	122.73
5	B	451	RVA	C3-O3-C7	-2.36	114.48	118.48
5	A	454	RVA	C12-C13-C14	-2.33	116.64	120.19
5	B	453	RVA	OB-C-C1	-2.32	116.31	121.94
5	A	455	RVA	C3-O3-C7	2.32	122.40	118.48
5	A	454	RVA	C1-C2-C3	2.17	121.42	119.62
2	A	451	VAE	C9-C8-C7	2.14	133.09	130.12
5	B	451	RVA	C6-C5-C4	2.11	123.25	120.25

*Continued on next page...*



*Continued from previous page...*

Mol	Chain	Res	Type	Atoms	Z	Observed(°)	Ideal(°)
5	B	453	RVA	C13-C12-C11	2.10	123.84	119.93
5	A	454	RVA	C3-O3-C7	2.06	121.97	118.48
5	A	454	RVA	OA-C-C1	2.04	121.17	115.31
2	A	451	VAE	C6-C5-C4	2.01	123.10	120.25

There are no chirality outliers.

All (11) torsion outliers are listed below:

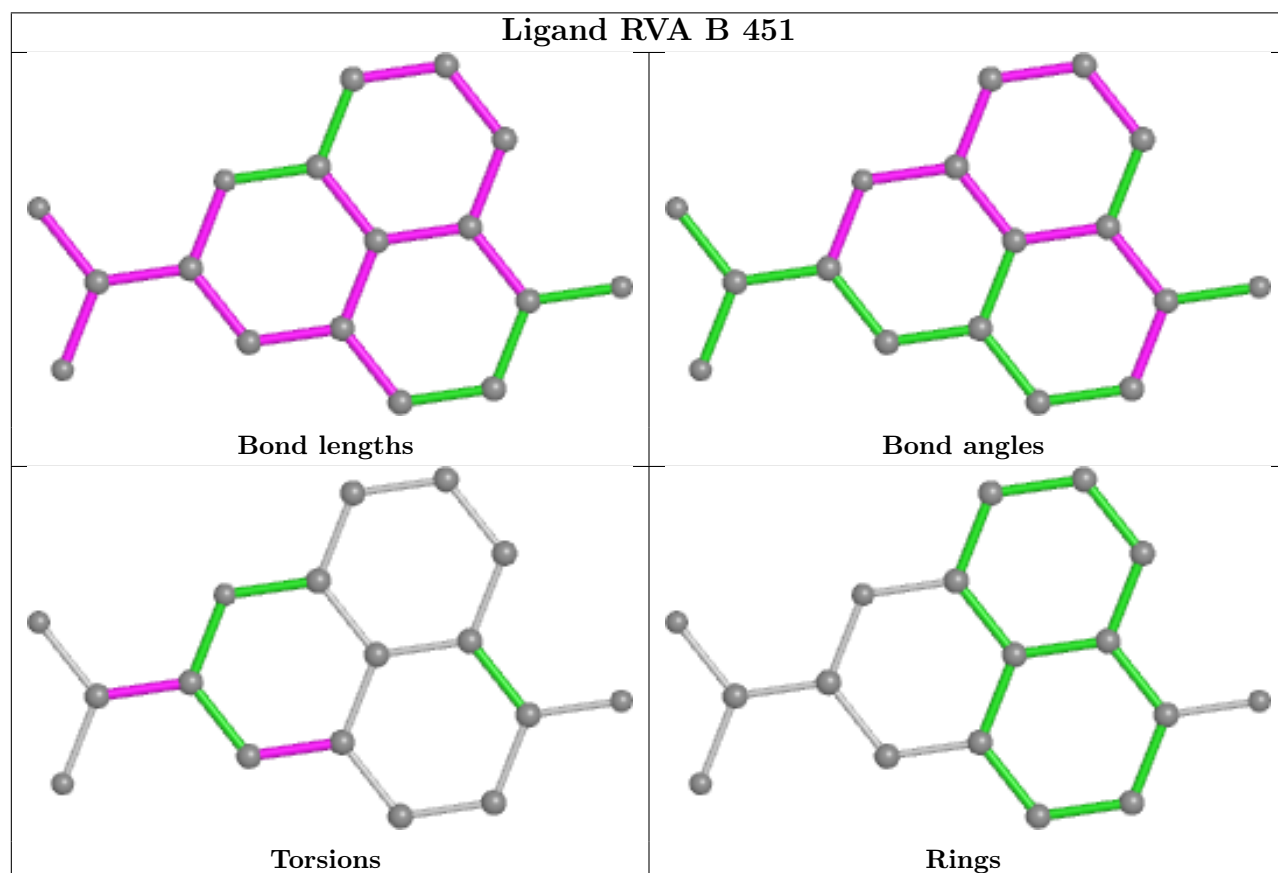
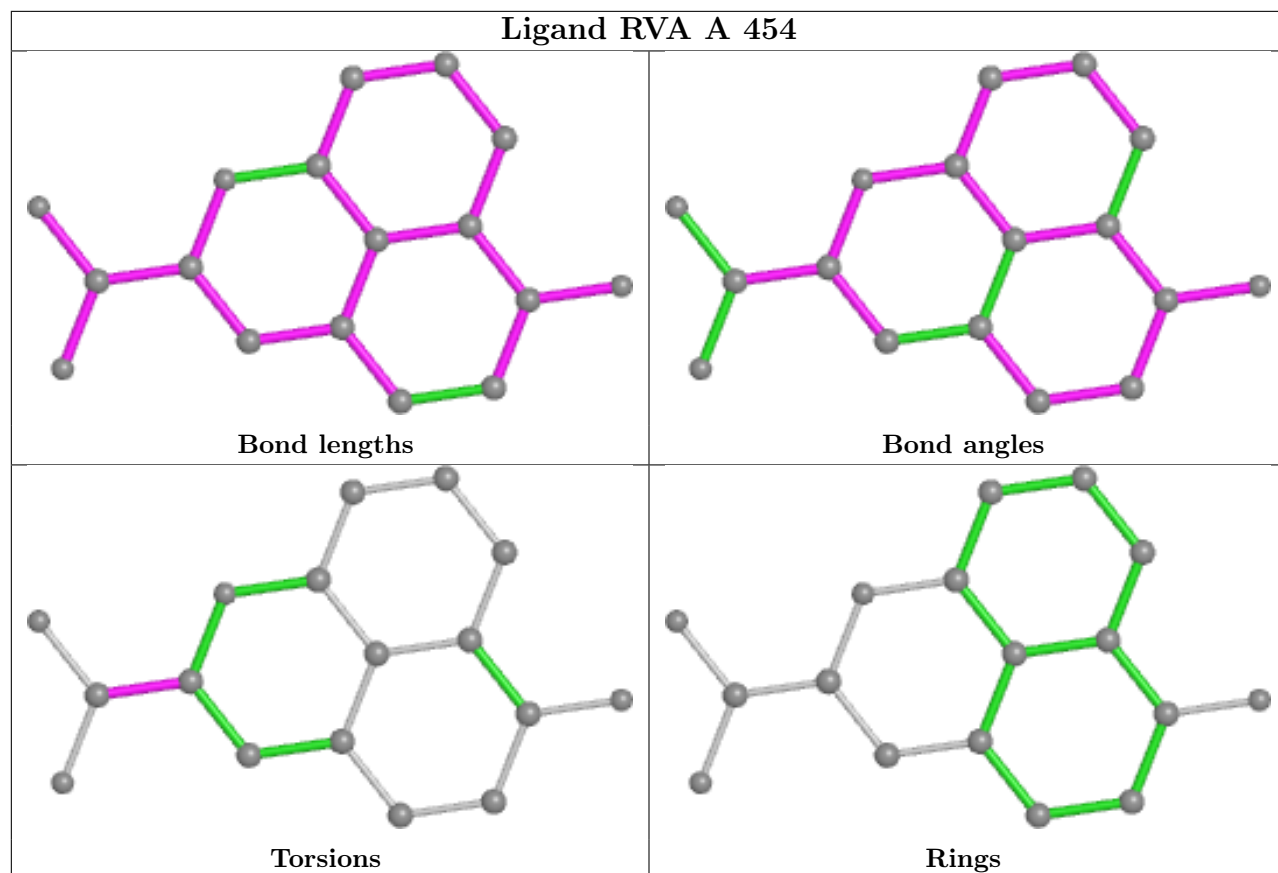
Mol	Chain	Res	Type	Atoms
2	A	451	VAE	OA'-C'-C7-O3
2	A	451	VAE	OB'-C'-C7-O3
5	A	454	RVA	OA'-C'-C7-O3
5	B	451	RVA	OA'-C'-C7-O3
5	A	455	RVA	C2-C3-O3-C7
5	B	451	RVA	C7-C8-C9-C10
2	A	451	VAE	OA'-C'-C7-C8
2	A	451	VAE	OB'-C'-C7-C8
5	A	454	RVA	OB'-C'-C7-O3
2	A	451	VAE	C8-C7-O3-C3
5	A	455	RVA	C8-C7-O3-C3

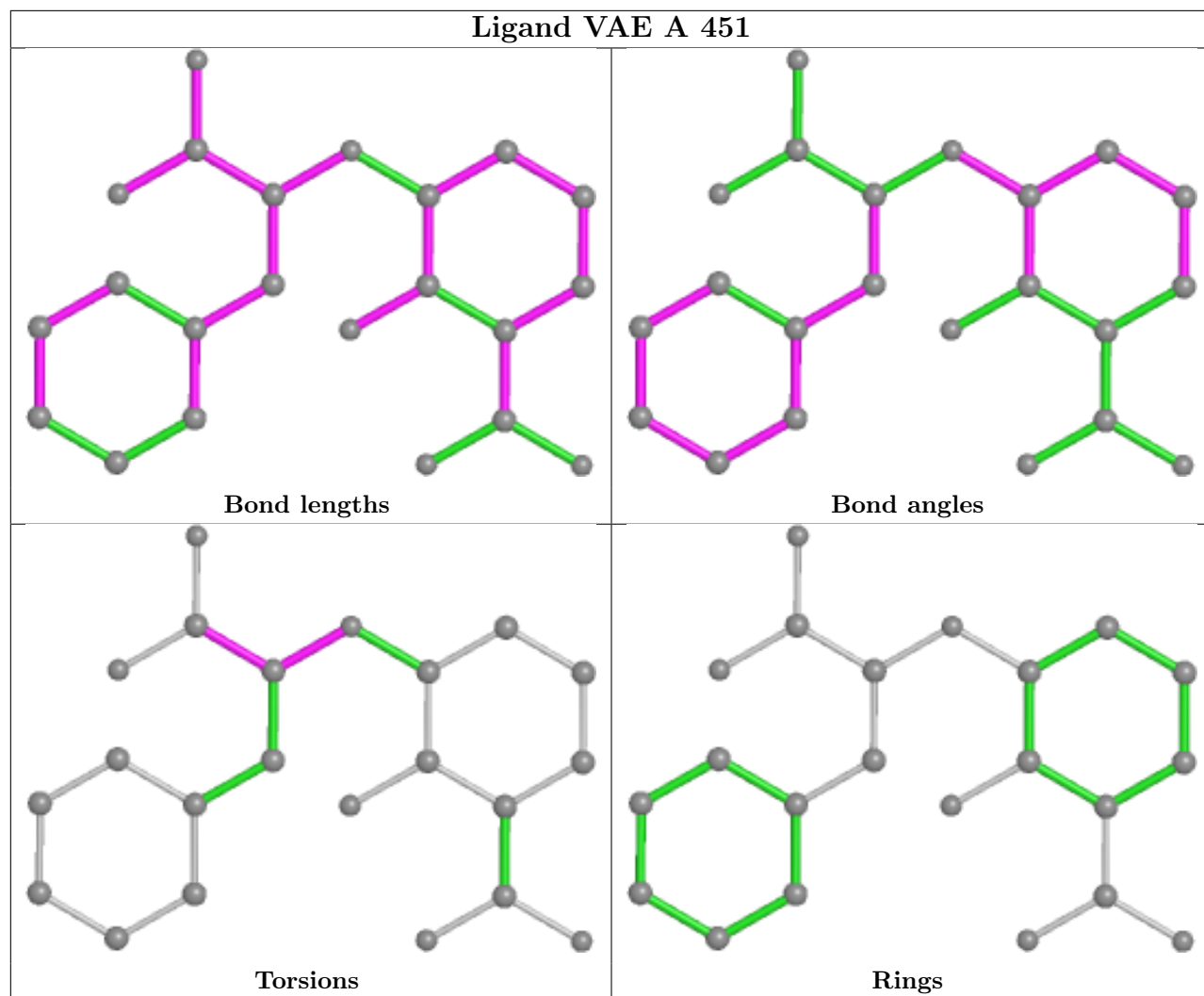
There are no ring outliers.

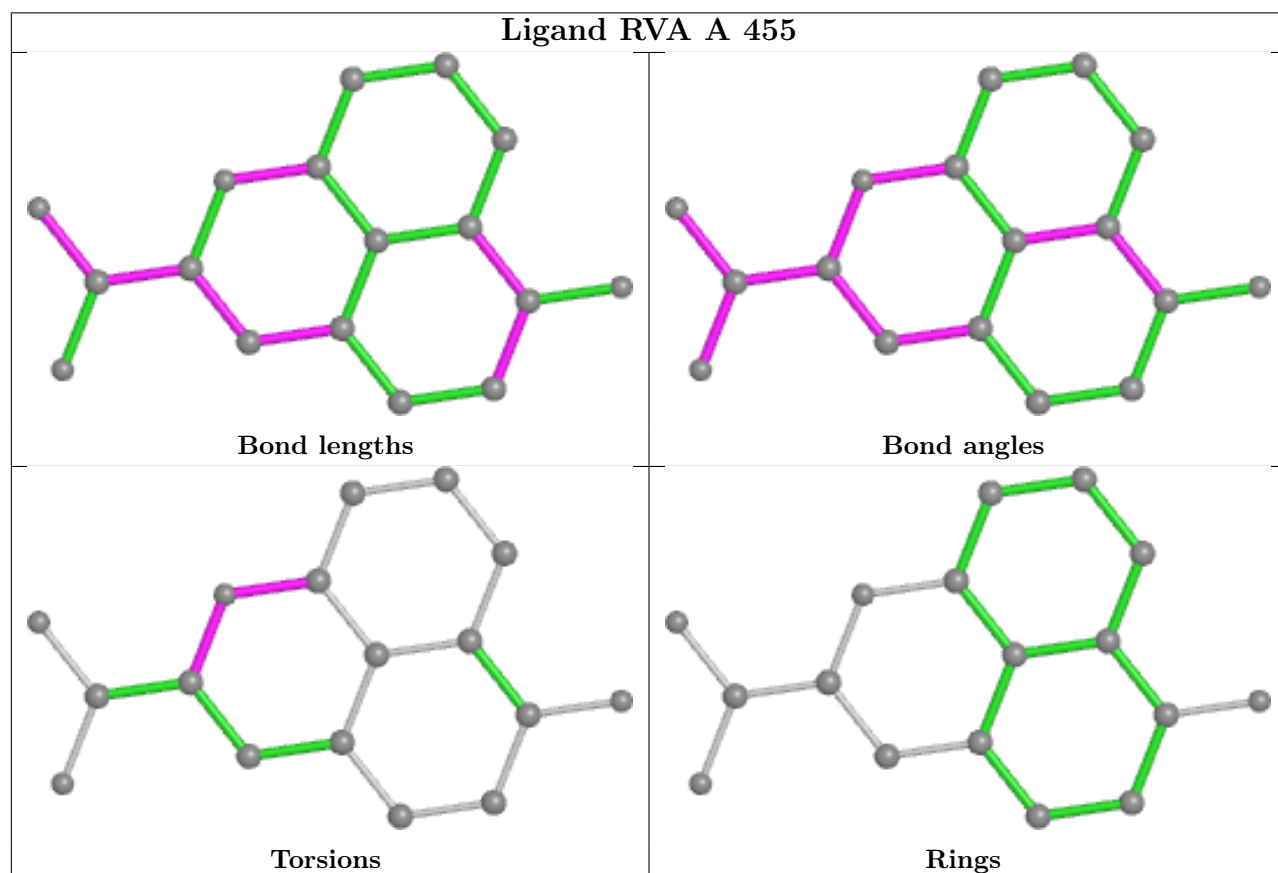
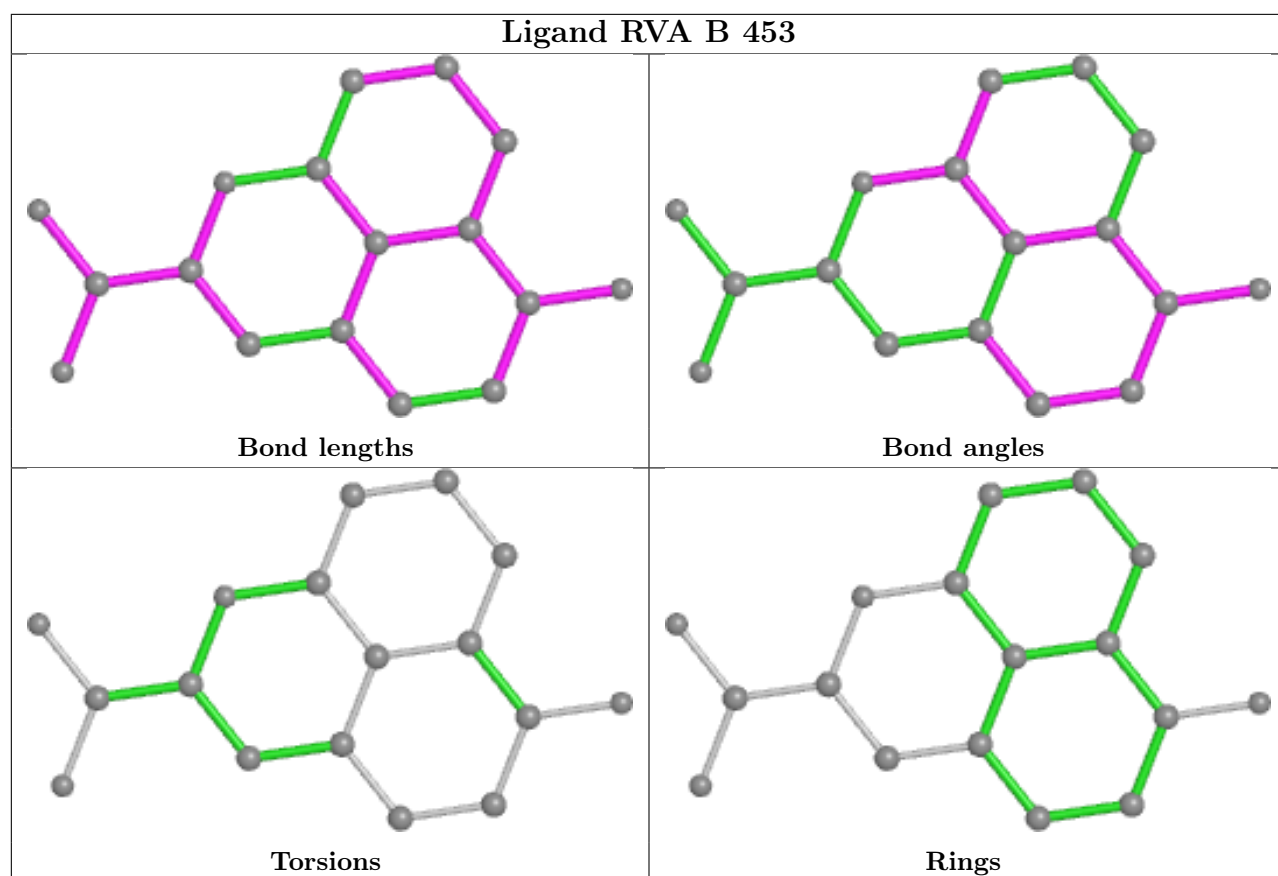
1 monomer is involved in 5 short contacts:

Mol	Chain	Res	Type	Clashes	Symm-Clashes
5	A	455	RVA	5	0

The following is a two-dimensional graphical depiction of Mogul quality analysis of bond lengths, bond angles, torsion angles, and ring geometry for all instances of the Ligand of Interest. In addition, ligands with molecular weight > 250 and outliers as shown on the validation Tables will also be included. For torsion angles, if less than 5% of the Mogul distribution of torsion angles is within 10 degrees of the torsion angle in question, then that torsion angle is considered an outlier. Any bond that is central to one or more torsion angles identified as an outlier by Mogul will be highlighted in the graph. For rings, the root-mean-square deviation (RMSD) between the ring in question and similar rings identified by Mogul is calculated over all ring torsion angles. If the average RMSD is greater than 60 degrees and the minimal RMSD between the ring in question and any Mogul-identified rings is also greater than 60 degrees, then that ring is considered an outlier. The outliers are highlighted in purple. The color gray indicates Mogul did not find sufficient equivalents in the CSD to analyse the geometry.







## 5.7 Other polymers [i](#)

There are no such residues in this entry.

## 5.8 Polymer linkage issues [i](#)

There are no chain breaks in this entry.

## 6 Fit of model and data

### 6.1 Protein, DNA and RNA chains

In the following table, the column labelled ‘#RSRZ> 2’ contains the number (and percentage) of RSRZ outliers, followed by percent RSRZ outliers for the chain as percentile scores relative to all X-ray entries and entries of similar resolution. The OWAB column contains the minimum, median, 95<sup>th</sup> percentile and maximum values of the occupancy-weighted average B-factor per residue. The column labelled ‘Q< 0.9’ lists the number of (and percentage) of residues with an average occupancy less than 0.9.

Mol	Chain	Analysed	<RSRZ>	#RSRZ>2	OWAB(Å <sup>2</sup> )	Q<0.9
1	A	417/450 (92%)	-0.31	13 (3%) 49 53	12, 25, 46, 67	1 (0%)
1	B	413/450 (91%)	-0.17	17 (4%) 37 40	14, 26, 54, 64	2 (0%)
All	All	830/900 (92%)	-0.24	30 (3%) 42 46	12, 25, 51, 67	3 (0%)

All (30) RSRZ outliers are listed below:

Mol	Chain	Res	Type	RSRZ
1	B	22	ALA	5.2
1	B	290	SER	5.1
1	B	40	SER	4.9
1	B	166	ALA	4.5
1	B	41	VAL	4.4
1	B	23	GLY	4.3
1	B	346	SER	4.0
1	B	345	PRO	3.9
1	A	273	ALA	3.7
1	A	232	THR	3.5
1	A	286	ASP	3.3
1	B	51	ASP	3.1
1	A	412	GLY	3.0
1	A	272	ARG	3.0
1	B	155	ILE	2.9
1	A	23[A]	GLY	2.8
1	A	287	ASP	2.7
1	B	167	THR	2.7
1	B	24	VAL	2.6
1	B	333	GLN	2.6
1	A	326	VAL	2.6
1	B	42	ASP	2.5
1	A	290	SER	2.5
1	A	15	SER	2.4

*Continued on next page...*

*Continued from previous page...*

Mol	Chain	Res	Type	RSRZ
1	B	38	THR	2.3
1	A	271	THR	2.2
1	A	22[A]	ALA	2.1
1	A	102	GLU	2.0
1	B	334	HIS	2.0
1	B	165	LEU	2.0

## 6.2 Non-standard residues in protein, DNA, RNA chains [i](#)

There are no non-standard protein/DNA/RNA residues in this entry.

## 6.3 Carbohydrates [i](#)

There are no monosaccharides in this entry.

## 6.4 Ligands [i](#)

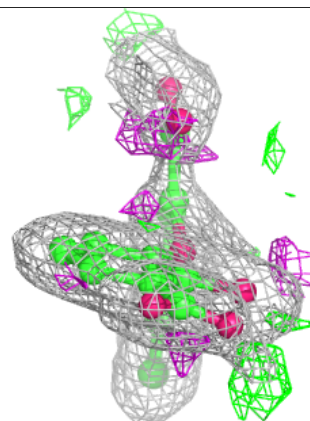
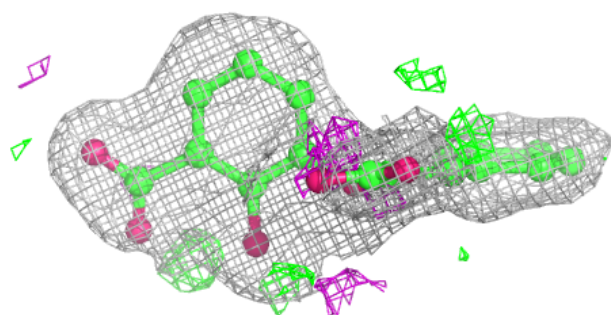
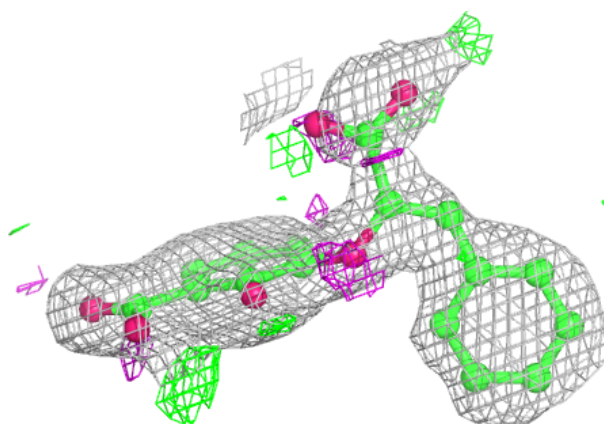
In the following table, the Atoms column lists the number of modelled atoms in the group and the number defined in the chemical component dictionary. The B-factors column lists the minimum, median, 95<sup>th</sup> percentile and maximum values of B factors of atoms in the group. The column labelled 'Q< 0.9' lists the number of atoms with occupancy less than 0.9.

Mol	Type	Chain	Res	Atoms	RSCC	RSR	B-factors(Å <sup>2</sup> )	Q<0.9
5	RVA	A	455	22/22	0.83	0.17	29,35,45,47	0
5	RVA	A	454	22/22	0.90	0.16	27,41,43,47	0
3	MG	B	452	1/1	0.94	0.05	54,54,54,54	0
5	RVA	B	453	22/22	0.94	0.12	31,34,42,43	0
5	RVA	B	451	22/22	0.96	0.08	18,23,36,40	0
4	SO4	A	453	5/5	0.96	0.18	62,66,67,68	0
2	VAE	A	451	22/22	0.97	0.07	14,23,26,26	0
3	MG	A	452	1/1	0.97	0.03	27,27,27,27	0

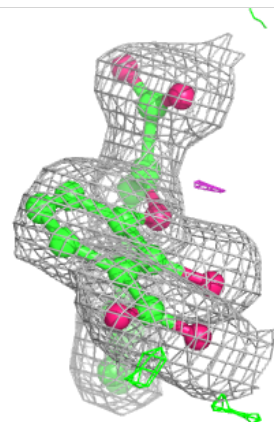
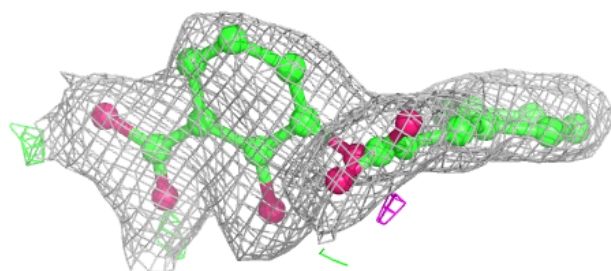
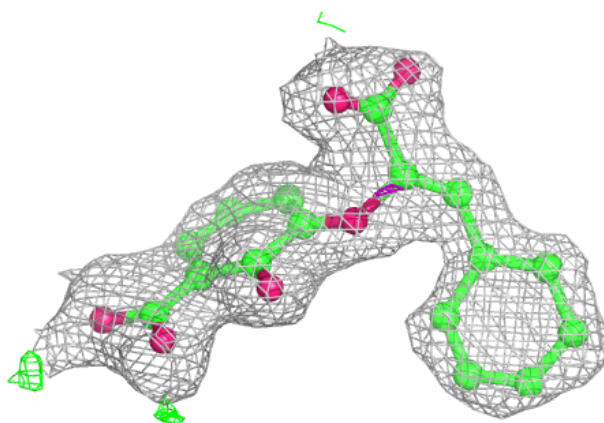
The following is a graphical depiction of the model fit to experimental electron density of all instances of the Ligand of Interest. In addition, ligands with molecular weight > 250 and outliers as shown on the geometry validation Tables will also be included. Each fit is shown from different orientation to approximate a three-dimensional view.

**Electron density around RVA A 455:**

$2mF_o-DF_c$  (at 0.7 rmsd) in gray  
 $mF_o-DF_c$  (at 3 rmsd) in purple (negative)  
and green (positive)

**Electron density around RVA A 454:**

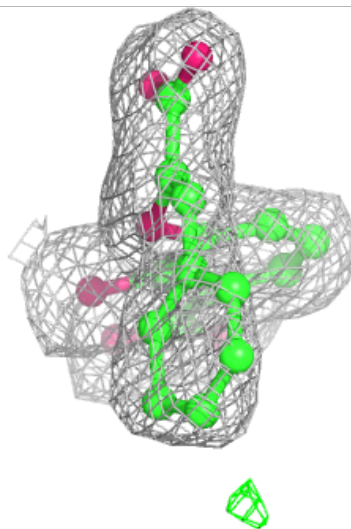
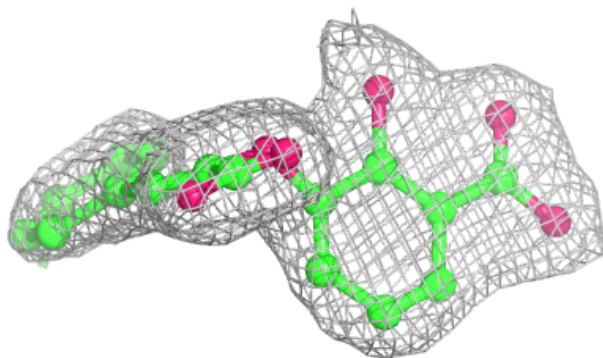
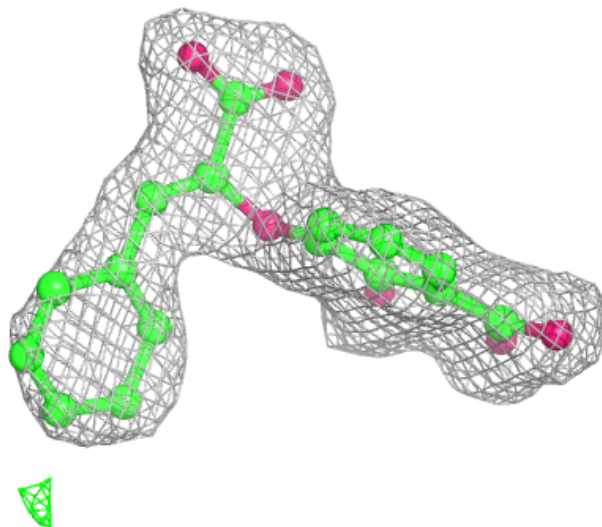
$2mF_o-DF_c$  (at 0.7 rmsd) in gray  
 $mF_o-DF_c$  (at 3 rmsd) in purple (negative)  
and green (positive)





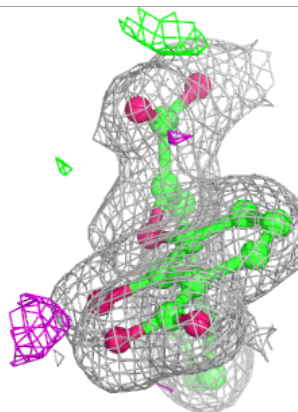
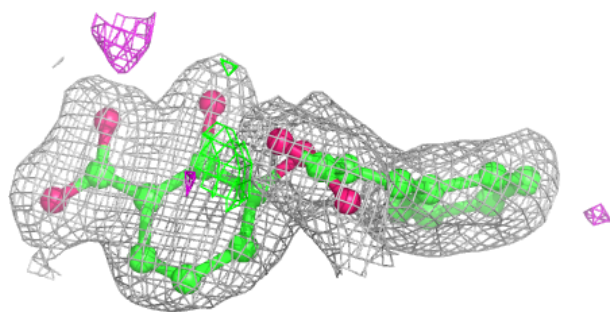
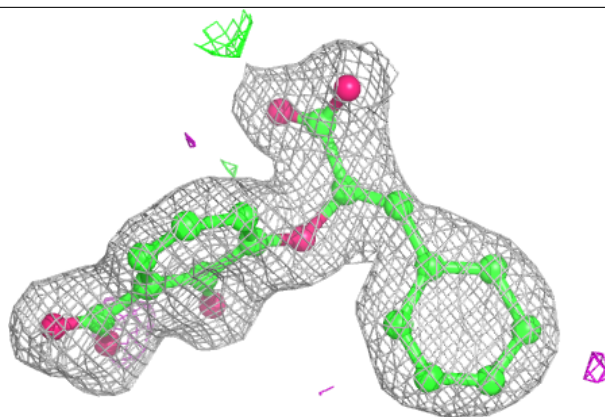
**Electron density around RVA B 453:**

$2mF_o-DF_c$  (at 0.7 rmsd) in gray  
 $mF_o-DF_c$  (at 3 rmsd) in purple (negative)  
and green (positive)

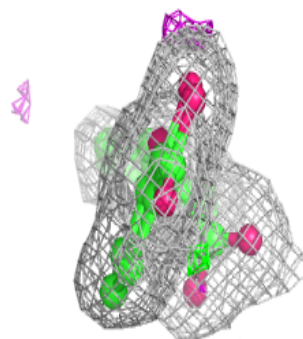
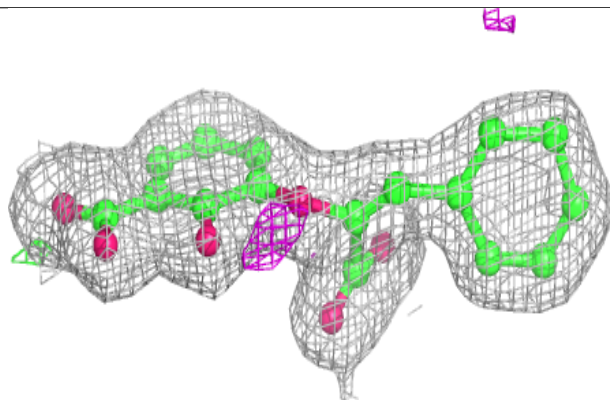
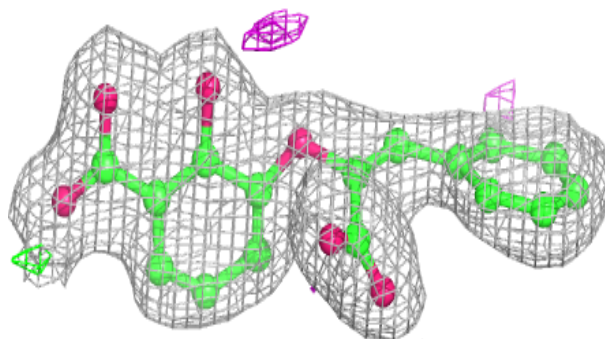


**Electron density around RVA B 451:**

$2mF_o-DF_c$  (at 0.7 rmsd) in gray  
 $mF_o-DF_c$  (at 3 rmsd) in purple (negative)  
and green (positive)

**Electron density around VAE A 451:**

$2mF_o-DF_c$  (at 0.7 rmsd) in gray  
 $mF_o-DF_c$  (at 3 rmsd) in purple (negative)  
and green (positive)



## 6.5 Other polymers [i](#)

There are no such residues in this entry.