



# Full wwPDB X-ray Structure Validation Report ⓘ

Mar 23, 2024 – 10:33 PM EDT

PDB ID : 1RX6  
Title : DIHYDROFOLATE REDUCTASE (E.C.1.5.1.3) COMPLEXED WITH 5,10-DIDEAZATETRAHYDROFOLATE AND NICOTINAMIDE ADENINE DINUCLEOTIDE PHOSPHATE (REDUCED FORM)  
Authors : Sawaya, M.R.  
Deposited on : 1996-09-19  
Resolution : 2.00 Å(reported)

This is a Full wwPDB X-ray Structure Validation Report for a publicly released PDB entry.

We welcome your comments at [validation@mail.wwpdb.org](mailto:validation@mail.wwpdb.org)

A user guide is available at

<https://www.wwpdb.org/validation/2017/XrayValidationReportHelp>

with specific help available everywhere you see the ⓘ symbol.

The types of validation reports are described at

<http://www.wwpdb.org/validation/2017/FAQs#types>.

---

The following versions of software and data (see [references ⓘ](#)) were used in the production of this report:

MolProbity : 4.02b-467  
Mogul : 1.8.5 (274361), CSD as541be (2020)  
Xtrriage (Phenix) : 1.13  
EDS : 2.36.1  
buster-report : 1.1.7 (2018)  
Percentile statistics : 20191225.v01 (using entries in the PDB archive December 25th 2019)  
Refmac : 5.8.0158  
CCP4 : 7.0.044 (Gargrove)  
Ideal geometry (proteins) : Engh & Huber (2001)  
Ideal geometry (DNA, RNA) : Parkinson et al. (1996)  
Validation Pipeline (wwPDB-VP) : 2.36.1

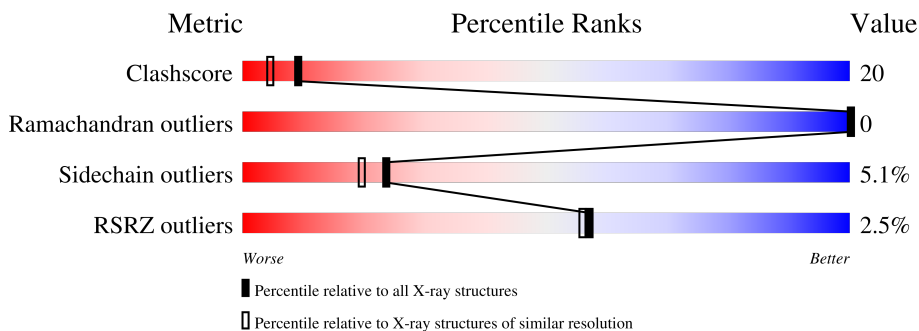
# 1 Overall quality at a glance

The following experimental techniques were used to determine the structure:

*X-RAY DIFFRACTION*

The reported resolution of this entry is 2.00 Å.

Percentile scores (ranging between 0-100) for global validation metrics of the entry are shown in the following graphic. The table shows the number of entries on which the scores are based.



Metric	Whole archive (#Entries)	Similar resolution (#Entries, resolution range(Å))
Clashscore	141614	9178 (2.00-2.00)
Ramachandran outliers	138981	9054 (2.00-2.00)
Sidechain outliers	138945	9053 (2.00-2.00)
RSRZ outliers	127900	7900 (2.00-2.00)

The table below summarises the geometric issues observed across the polymeric chains and their fit to the electron density. The red, orange, yellow and green segments of the lower bar indicate the fraction of residues that contain outliers for  $\geq 3$ , 2, 1 and 0 types of geometric quality criteria respectively. A grey segment represents the fraction of residues that are not modelled. The numeric value for each fraction is indicated below the corresponding segment, with a dot representing fractions  $\leq 5\%$ . The upper red bar (where present) indicates the fraction of residues that have poor fit to the electron density. The numeric value is given above the bar.

Mol	Chain	Length	Quality of chain
1	A	159	

## 2 Entry composition [i](#)

There are 5 unique types of molecules in this entry. The entry contains 1413 atoms, of which 0 are hydrogens and 0 are deuteriums.

In the tables below, the ZeroOcc column contains the number of atoms modelled with zero occupancy, the AltConf column contains the number of residues with at least one atom in alternate conformation and the Trace column contains the number of residues modelled with at most 2 atoms.

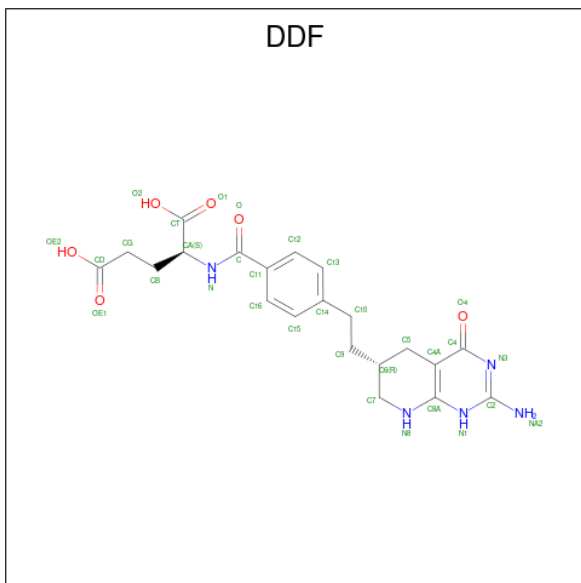
- Molecule 1 is a protein called DIHYDROFOLATE REDUCTASE.

Mol	Chain	Residues	Atoms					ZeroOcc	AltConf	Trace
			Total	C	N	O	S			
1	A	159	1268	805	216	240	7	6	0	0

There is a discrepancy between the modelled and reference sequences:

Chain	Residue	Modelled	Actual	Comment	Reference
A	37	ASP	ASN	conflict	UNP P0ABQ4

- Molecule 2 is 5,10-DIDEAZATETRAHYDROFOLIC ACID (three-letter code: DDF) (formula:  $C_{21}H_{25}N_5O_6$ ).



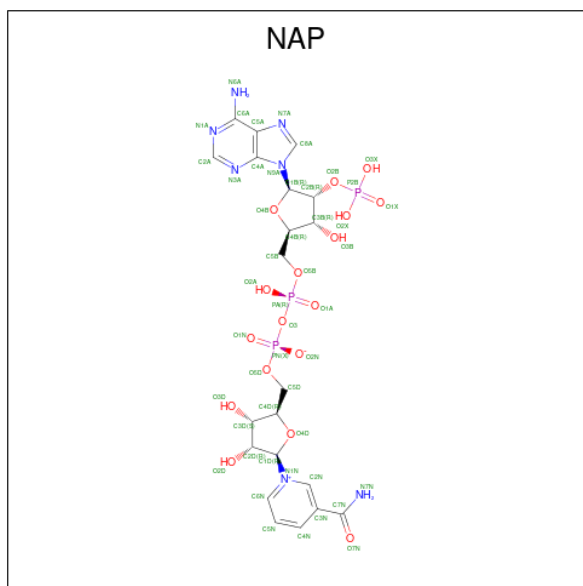
Mol	Chain	Residues	Atoms				ZeroOcc	AltConf
			Total	C	N	O		
2	A	1	32	21	5	6	0	0

- Molecule 3 is BETA-MERCAPTOETHANOL (three-letter code: BME) (formula:  $C_2H_6OS$ ).



Mol	Chain	Residues	Atoms			ZeroOcc	AltConf
3	A	1	Total	C	S	0	0
			2	1	1		

- Molecule 4 is NADP NICOTINAMIDE-ADENINE-DINUCLEOTIDE PHOSPHATE (three-letter code: NAP) (formula:  $C_{21}H_{28}N_7O_{17}P_3$ ).



Mol	Chain	Residues	Atoms					ZeroOcc	AltConf
4	A	1	Total	C	N	O	P	0	0
			39	15	5	16	3		

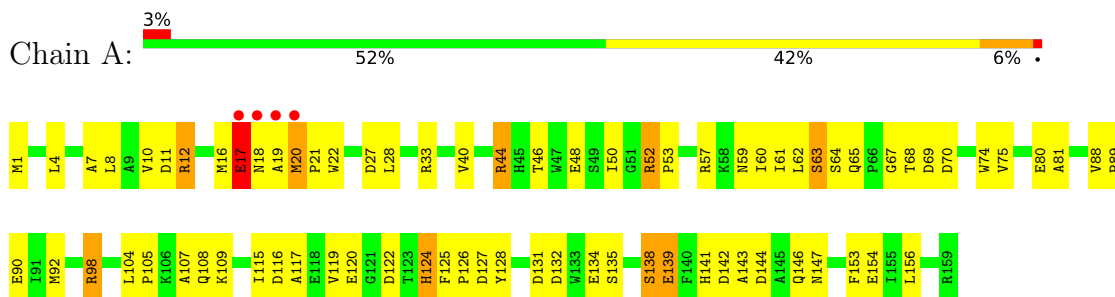
- Molecule 5 is water.

Mol	Chain	Residues	Atoms	ZeroOcc	AltConf
5	A	72	Total O 72 72	0	0

### 3 Residue-property plots [i](#)

These plots are drawn for all protein, RNA, DNA and oligosaccharide chains in the entry. The first graphic for a chain summarises the proportions of the various outlier classes displayed in the second graphic. The second graphic shows the sequence view annotated by issues in geometry and electron density. Residues are color-coded according to the number of geometric quality criteria for which they contain at least one outlier: green = 0, yellow = 1, orange = 2 and red = 3 or more. A red dot above a residue indicates a poor fit to the electron density ( $RSRZ > 2$ ). Stretches of 2 or more consecutive residues without any outlier are shown as a green connector. Residues present in the sample, but not in the model, are shown in grey.

- Molecule 1: DIHYDROFOLATE REDUCTASE



## 4 Data and refinement statistics

Property	Value	Source
Space group	P 21 21 21	Depositor
Cell constants a, b, c, $\alpha$ , $\beta$ , $\gamma$	34.91Å 45.29Å 101.07Å 90.00° 90.00° 90.00°	Depositor
Resolution (Å)	20.00 – 2.00 34.91 – 1.95	Depositor EDS
% Data completeness (in resolution range)	92.0 (20.00-2.00) 88.8 (34.91-1.95)	Depositor EDS
$R_{merge}$	(Not available)	Depositor
$R_{sym}$	0.11	Depositor
$\langle I/\sigma(I) \rangle$ <sup>1</sup>	1.45 (at 1.95Å)	Xtrriage
Refinement program	TNT	Depositor
R, $R_{free}$	0.184 , (Not available) 0.176 , (Not available)	Depositor DCC
$R_{free}$ test set	No test flags present.	wwPDB-VP
Wilson B-factor (Å <sup>2</sup> )	17.6	Xtrriage
Anisotropy	0.300	Xtrriage
Bulk solvent $k_{sol}$ (e/Å <sup>3</sup> ), $B_{sol}$ (Å <sup>2</sup> )	0.33 , 110.0	EDS
L-test for twinning <sup>2</sup>	$\langle  L  \rangle = 0.46$ , $\langle L^2 \rangle = 0.29$	Xtrriage
Estimated twinning fraction	No twinning to report.	Xtrriage
$F_o, F_c$ correlation	0.95	EDS
Total number of atoms	1413	wwPDB-VP
Average B, all atoms (Å <sup>2</sup> )	28.0	wwPDB-VP

Xtrriage's analysis on translational NCS is as follows: *The largest off-origin peak in the Patterson function is 10.46% of the height of the origin peak. No significant pseudotranslation is detected.*

<sup>1</sup>Intensities estimated from amplitudes.

<sup>2</sup>Theoretical values of  $\langle |L| \rangle$ ,  $\langle L^2 \rangle$  for acentric reflections are 0.5, 0.333 respectively for untwinned datasets, and 0.375, 0.2 for perfectly twinned datasets.

## 5 Model quality i

### 5.1 Standard geometry i

Bond lengths and bond angles in the following residue types are not validated in this section: DDF, NAP, BME

The Z score for a bond length (or angle) is the number of standard deviations the observed value is removed from the expected value. A bond length (or angle) with  $|Z| > 5$  is considered an outlier worth inspection. RMSZ is the root-mean-square of all Z scores of the bond lengths (or angles).

Mol	Chain	Bond lengths		Bond angles	
		RMSZ	# Z  >5	RMSZ	# Z  >5
1	A	1.29	6/1302 (0.5%)	1.73	33/1770 (1.9%)

All (6) bond length outliers are listed below:

Mol	Chain	Res	Type	Atoms	Z	Observed(Å)	Ideal(Å)
1	A	139	GLU	CD-OE2	7.69	1.34	1.25
1	A	80	GLU	CD-OE1	6.98	1.33	1.25
1	A	120	GLU	CD-OE2	6.34	1.32	1.25
1	A	17	GLU	CD-OE1	5.88	1.32	1.25
1	A	154	GLU	CD-OE1	5.74	1.31	1.25
1	A	90	GLU	CD-OE2	5.13	1.31	1.25

All (33) bond angle outliers are listed below:

Mol	Chain	Res	Type	Atoms	Z	Observed(°)	Ideal(°)
1	A	27	ASP	CB-CG-OD2	-9.00	110.20	118.30
1	A	132	ASP	CB-CG-OD1	8.77	126.19	118.30
1	A	27	ASP	CB-CG-OD1	8.75	126.18	118.30
1	A	132	ASP	CB-CG-OD2	-8.41	110.73	118.30
1	A	70	ASP	CB-CG-OD2	-8.26	110.86	118.30
1	A	98	ARG	NE-CZ-NH1	8.01	124.30	120.30
1	A	12	ARG	NE-CZ-NH1	7.21	123.91	120.30
1	A	131	ASP	CB-CG-OD1	-7.02	111.98	118.30
1	A	11	ASP	CB-CG-OD2	-7.01	111.99	118.30
1	A	33	ARG	NE-CZ-NH1	6.88	123.74	120.30
1	A	70	ASP	CB-CA-C	-6.85	96.71	110.40
1	A	127	ASP	CB-CG-OD1	6.79	124.41	118.30
1	A	57	ARG	NE-CZ-NH2	6.66	123.63	120.30
1	A	127	ASP	CB-CG-OD2	-6.40	112.54	118.30
1	A	68	THR	N-CA-CB	-6.38	98.18	110.30

*Continued on next page...*



Continued from previous page...

Mol	Chain	Res	Type	Atoms	Z	Observed(°)	Ideal(°)
1	A	109	LYS	N-CA-CB	-6.33	99.20	110.60
1	A	115	ILE	CA-CB-CG1	-6.20	99.22	111.00
1	A	116	ASP	CB-CG-OD2	-6.16	112.76	118.30
1	A	146	GLN	CB-CA-C	-6.10	98.19	110.40
1	A	69	ASP	CB-CG-OD1	5.85	123.56	118.30
1	A	124	HIS	CB-CA-C	-5.83	98.74	110.40
1	A	144	ASP	CB-CG-OD2	-5.81	113.08	118.30
1	A	144	ASP	CB-CG-OD1	5.78	123.50	118.30
1	A	116	ASP	CB-CG-OD1	5.67	123.40	118.30
1	A	131	ASP	CB-CG-OD2	5.63	123.36	118.30
1	A	52	ARG	NE-CZ-NH1	5.53	123.06	120.30
1	A	69	ASP	CB-CG-OD2	-5.51	113.34	118.30
1	A	11	ASP	CB-CG-OD1	5.47	123.22	118.30
1	A	92	MET	CG-SD-CE	5.41	108.85	100.20
1	A	122	ASP	CB-CG-OD2	-5.38	113.46	118.30
1	A	44	ARG	NE-CZ-NH1	5.20	122.90	120.30
1	A	142	ASP	CB-CG-OD2	-5.17	113.64	118.30
1	A	70	ASP	CB-CG-OD1	5.02	122.82	118.30

There are no chirality outliers.

There are no planarity outliers.

## 5.2 Too-close contacts

In the following table, the Non-H and H(model) columns list the number of non-hydrogen atoms and hydrogen atoms in the chain respectively. The H(added) column lists the number of hydrogen atoms added and optimized by MolProbity. The Clashes column lists the number of clashes within the asymmetric unit, whereas Symm-Clashes lists symmetry-related clashes.

Mol	Chain	Non-H	H(model)	H(added)	Clashes	Symm-Clashes
1	A	1268	0	1220	51	0
2	A	32	0	23	1	0
3	A	2	0	0	0	0
4	A	39	0	18	8	0
5	A	72	0	0	1	0
All	All	1413	0	1261	52	0

The all-atom clashscore is defined as the number of clashes found per 1000 atoms (including hydrogen atoms). The all-atom clashscore for this structure is 20.

All (52) close contacts within the same asymmetric unit are listed below, sorted by their clash magnitude.

Atom-1	Atom-2	Interatomic distance (Å)	Clash overlap (Å)
1:A:135:SER:HA	1:A:156:LEU:HD23	1.36	1.03
1:A:63:SER:HA	4:A:164:NAP:H1B	1.53	0.88
1:A:46:THR:O	1:A:50:ILE:HG13	1.92	0.69
1:A:44:ARG:O	1:A:48:GLU:HG3	1.94	0.67
1:A:52:ARG:HG3	5:A:326:HOH:O	1.94	0.67
1:A:104:LEU:HB3	1:A:105:PRO:HD3	1.79	0.64
1:A:16:MET:O	1:A:19:ALA:HB3	2.01	0.61
1:A:17:GLU:HA	1:A:17:GLU:OE1	2.01	0.60
1:A:135:SER:CA	1:A:156:LEU:HD23	2.22	0.60
1:A:8:LEU:HD12	1:A:8:LEU:N	2.18	0.59
1:A:12:ARG:NH1	1:A:125:PHE:O	2.31	0.59
1:A:139:GLU:HG2	1:A:141:HIS:NE2	2.18	0.59
1:A:44:ARG:NH2	1:A:65:GLN:HB2	2.21	0.55
1:A:10:VAL:HG23	1:A:117:ALA:O	2.07	0.55
1:A:64:SER:HB3	4:A:164:NAP:O2X	2.07	0.54
1:A:62:LEU:O	4:A:164:NAP:H1B	2.09	0.53
1:A:12:ARG:O	1:A:124:HIS:HA	2.09	0.53
1:A:135:SER:HA	1:A:156:LEU:CD2	2.24	0.53
1:A:19:ALA:O	1:A:21:PRO:HD3	2.10	0.52
1:A:62:LEU:HG	4:A:164:NAP:C4A	2.39	0.52
1:A:134:GLU:O	1:A:156:LEU:HA	2.11	0.51
1:A:61:ILE:HD13	1:A:61:ILE:N	2.26	0.50
1:A:20:MET:HG3	1:A:22:TRP:CZ2	2.47	0.50
1:A:124:HIS:N	1:A:124:HIS:CD2	2.80	0.49
1:A:75:VAL:HG21	1:A:81:ALA:HA	1.94	0.49
1:A:7:ALA:C	1:A:8:LEU:HD12	2.34	0.48
1:A:52:ARG:HG2	1:A:53:PRO:HD2	1.95	0.47
1:A:67:GLY:HA3	1:A:74:TRP:CE2	2.48	0.47
1:A:20:MET:SD	1:A:20:MET:N	2.87	0.47
1:A:20:MET:HE2	1:A:22:TRP:CH2	2.49	0.47
1:A:67:GLY:HA3	1:A:74:TRP:CD2	2.49	0.47
1:A:128:TYR:CD1	1:A:128:TYR:N	2.83	0.47
1:A:138:SER:HA	1:A:153:PHE:O	2.14	0.47
1:A:63:SER:CA	4:A:164:NAP:N3A	2.78	0.47
1:A:20:MET:CE	1:A:22:TRP:CH2	2.98	0.46
1:A:60:ILE:C	1:A:61:ILE:HD13	2.35	0.46
1:A:62:LEU:HG	4:A:164:NAP:C5A	2.46	0.45
1:A:104:LEU:N	1:A:105:PRO:CD	2.79	0.45
1:A:59:ASN:HD22	1:A:59:ASN:N	2.15	0.45
1:A:10:VAL:HG23	1:A:117:ALA:C	2.37	0.45
1:A:4:LEU:CD1	1:A:107:ALA:HB2	2.48	0.44
1:A:1:MET:HG2	1:A:108:GLN:HB2	1.99	0.44

*Continued on next page...*

Continued from previous page...

Atom-1	Atom-2	Interatomic distance (Å)	Clash overlap (Å)
1:A:40:VAL:HG23	1:A:40:VAL:O	2.18	0.43
1:A:143:ALA:HB1	1:A:147:ASN:O	2.19	0.43
1:A:28:LEU:HD23	1:A:28:LEU:HA	1.90	0.42
2:A:161:DDF:H101	2:A:161:DDF:H51	1.22	0.42
1:A:88:VAL:HB	1:A:89:PRO:HD2	2.02	0.42
1:A:125:PHE:CG	1:A:126:PRO:HD2	2.55	0.42
1:A:63:SER:HA	4:A:164:NAP:N3A	2.35	0.41
1:A:20:MET:HA	1:A:21:PRO:HD2	1.56	0.41
1:A:63:SER:C	4:A:164:NAP:N3A	2.75	0.41
1:A:104:LEU:N	1:A:105:PRO:HD2	2.36	0.40

There are no symmetry-related clashes.

## 5.3 Torsion angles [i](#)

### 5.3.1 Protein backbone [i](#)

In the following table, the Percentiles column shows the percent Ramachandran outliers of the chain as a percentile score with respect to all X-ray entries followed by that with respect to entries of similar resolution.

The Analysed column shows the number of residues for which the backbone conformation was analysed, and the total number of residues.

Mol	Chain	Analysed	Favoured	Allowed	Outliers	Percentiles
1	A	157/159 (99%)	150 (96%)	7 (4%)	0	100 100

There are no Ramachandran outliers to report.

### 5.3.2 Protein sidechains [i](#)

In the following table, the Percentiles column shows the percent sidechain outliers of the chain as a percentile score with respect to all X-ray entries followed by that with respect to entries of similar resolution.

The Analysed column shows the number of residues for which the sidechain conformation was analysed, and the total number of residues.

Mol	Chain	Analysed	Rotameric	Outliers	Percentiles
1	A	136/136 (100%)	129 (95%)	7 (5%)	24 19

All (7) residues with a non-rotameric sidechain are listed below:

Mol	Chain	Res	Type
1	A	17	GLU
1	A	18	ASN
1	A	20	MET
1	A	63	SER
1	A	98	ARG
1	A	119	VAL
1	A	138	SER

Sometimes sidechains can be flipped to improve hydrogen bonding and reduce clashes. All (1) such sidechains are listed below:

Mol	Chain	Res	Type
1	A	45	HIS

### 5.3.3 RNA [i](#)

There are no RNA molecules in this entry.

## 5.4 Non-standard residues in protein, DNA, RNA chains [i](#)

There are no non-standard protein/DNA/RNA residues in this entry.

## 5.5 Carbohydrates [i](#)

There are no monosaccharides in this entry.

## 5.6 Ligand geometry [i](#)

3 ligands are modelled in this entry.

In the following table, the Counts columns list the number of bonds (or angles) for which Mogul statistics could be retrieved, the number of bonds (or angles) that are observed in the model and the number of bonds (or angles) that are defined in the Chemical Component Dictionary. The Link column lists molecule types, if any, to which the group is linked. The Z score for a bond length (or angle) is the number of standard deviations the observed value is removed from the expected value. A bond length (or angle) with  $|Z| > 2$  is considered an outlier worth inspection. RMSZ is the root-mean-square of all Z scores of the bond lengths (or angles).

Mol	Type	Chain	Res	Link	Bond lengths			Bond angles		
					Counts	RMSZ	# Z  > 2	Counts	RMSZ	# Z  > 2
4	NAP	A	164	-	36,42,52	1.44	8 (22%)	43,65,80	1.87	11 (25%)
2	DDF	A	161	-	33,34,34	2.91	13 (39%)	34,47,47	2.68	15 (44%)
3	BME	A	162	1	0,1,3	-	-	-	-	-

In the following table, the Chirals column lists the number of chiral outliers, the number of chiral centers analysed, the number of these observed in the model and the number defined in the Chemical Component Dictionary. Similar counts are reported in the Torsion and Rings columns. '-' means no outliers of that kind were identified.

Mol	Type	Chain	Res	Link	Chirals	Torsions	Rings
4	NAP	A	164	-	-	11/23/56/67	0/4/4/5
2	DDF	A	161	-	-	7/22/31/31	0/3/3/3

All (21) bond length outliers are listed below:

Mol	Chain	Res	Type	Atoms	Z	Observed(Å)	Ideal(Å)
2	A	161	DDF	C7-C6	-8.00	1.46	1.53
2	A	161	DDF	C7-N8	-6.96	1.33	1.44
2	A	161	DDF	C5-C4A	-6.10	1.44	1.51
2	A	161	DDF	C2-N3	5.32	1.44	1.35
4	A	164	NAP	C1D-C2D	-4.21	1.44	1.51
2	A	161	DDF	C8A-N1	3.42	1.41	1.34
2	A	161	DDF	C4-N3	3.40	1.39	1.33
2	A	161	DDF	CG-CD	3.32	1.58	1.50
2	A	161	DDF	CB-CG	3.15	1.62	1.52
2	A	161	DDF	C13-C14	3.08	1.45	1.38
2	A	161	DDF	C15-C14	-2.74	1.32	1.38
4	A	164	NAP	C4A-N3A	-2.70	1.31	1.35
2	A	161	DDF	C5-C6	-2.61	1.45	1.52
4	A	164	NAP	O2D-C2D	-2.61	1.37	1.43
4	A	164	NAP	C5D-C4D	2.39	1.59	1.51
2	A	161	DDF	C2-NA2	-2.31	1.29	1.33
4	A	164	NAP	O3D-C3D	-2.11	1.38	1.43
4	A	164	NAP	P2B-O1X	2.07	1.57	1.50
4	A	164	NAP	O4D-C4D	2.07	1.47	1.44
2	A	161	DDF	C4A-C4	2.04	1.45	1.41
4	A	164	NAP	C2D-C3D	2.03	1.56	1.53

All (26) bond angle outliers are listed below:

Mol	Chain	Res	Type	Atoms	Z	Observed(°)	Ideal(°)
2	A	161	DDF	C2-N3-C4	5.85	125.23	115.93
2	A	161	DDF	C15-C16-C11	5.44	127.11	120.78
2	A	161	DDF	C10-C9-C6	-5.19	107.82	114.47
4	A	164	NAP	C1B-N9A-C4A	-4.75	118.30	126.64
4	A	164	NAP	O3D-C3D-C4D	4.60	124.34	111.05
2	A	161	DDF	N1-C2-N3	-4.26	118.73	125.42
2	A	161	DDF	NA2-C2-N1	4.10	123.64	117.25
2	A	161	DDF	C9-C6-C7	3.93	120.82	110.76
4	A	164	NAP	O2D-C2D-C1D	3.87	122.52	110.97
2	A	161	DDF	O-C-C11	3.65	127.45	120.94
4	A	164	NAP	O3D-C3D-C2D	3.49	120.45	112.04
2	A	161	DDF	O-C-N	-3.41	116.17	122.45
2	A	161	DDF	OE1-CD-CG	-3.39	112.20	123.08
4	A	164	NAP	O2D-C2D-C3D	3.23	117.39	111.27
4	A	164	NAP	C3B-C2B-C1B	-3.23	96.82	102.89
2	A	161	DDF	C6-C7-N8	3.18	117.16	111.50
4	A	164	NAP	C1D-C2D-C3D	3.06	106.30	101.63
4	A	164	NAP	O4D-C4D-C3D	-3.04	102.02	104.70
2	A	161	DDF	C12-C11-C	3.01	130.37	120.62
2	A	161	DDF	OE2-CD-CG	2.83	123.12	114.03
2	A	161	DDF	CB-CA-N	-2.80	105.21	110.88
2	A	161	DDF	C16-C15-C14	-2.78	117.20	121.03
4	A	164	NAP	O2B-C2B-C1B	-2.47	101.20	110.10
4	A	164	NAP	C5A-C6A-N6A	2.33	123.89	120.35
4	A	164	NAP	O2X-P2B-O1X	2.27	119.56	110.68
2	A	161	DDF	C16-C11-C12	-2.27	115.36	118.59

There are no chirality outliers.

All (18) torsion outliers are listed below:

Mol	Chain	Res	Type	Atoms
4	A	164	NAP	C5B-O5B-PA-O1A
4	A	164	NAP	C2B-O2B-P2B-O1X
4	A	164	NAP	C5D-O5D-PN-O2N
2	A	161	DDF	N-CA-CB-CG
2	A	161	DDF	CT-CA-CB-CG
2	A	161	DDF	C5-C6-C9-C10
4	A	164	NAP	C3B-C4B-C5B-O5B
2	A	161	DDF	C14-C10-C9-C6
4	A	164	NAP	C5B-O5B-PA-O3
4	A	164	NAP	C5D-O5D-PN-O3
2	A	161	DDF	CA-CB-CG-CD
2	A	161	DDF	C9-C10-C14-C15

*Continued on next page...*

*Continued from previous page...*

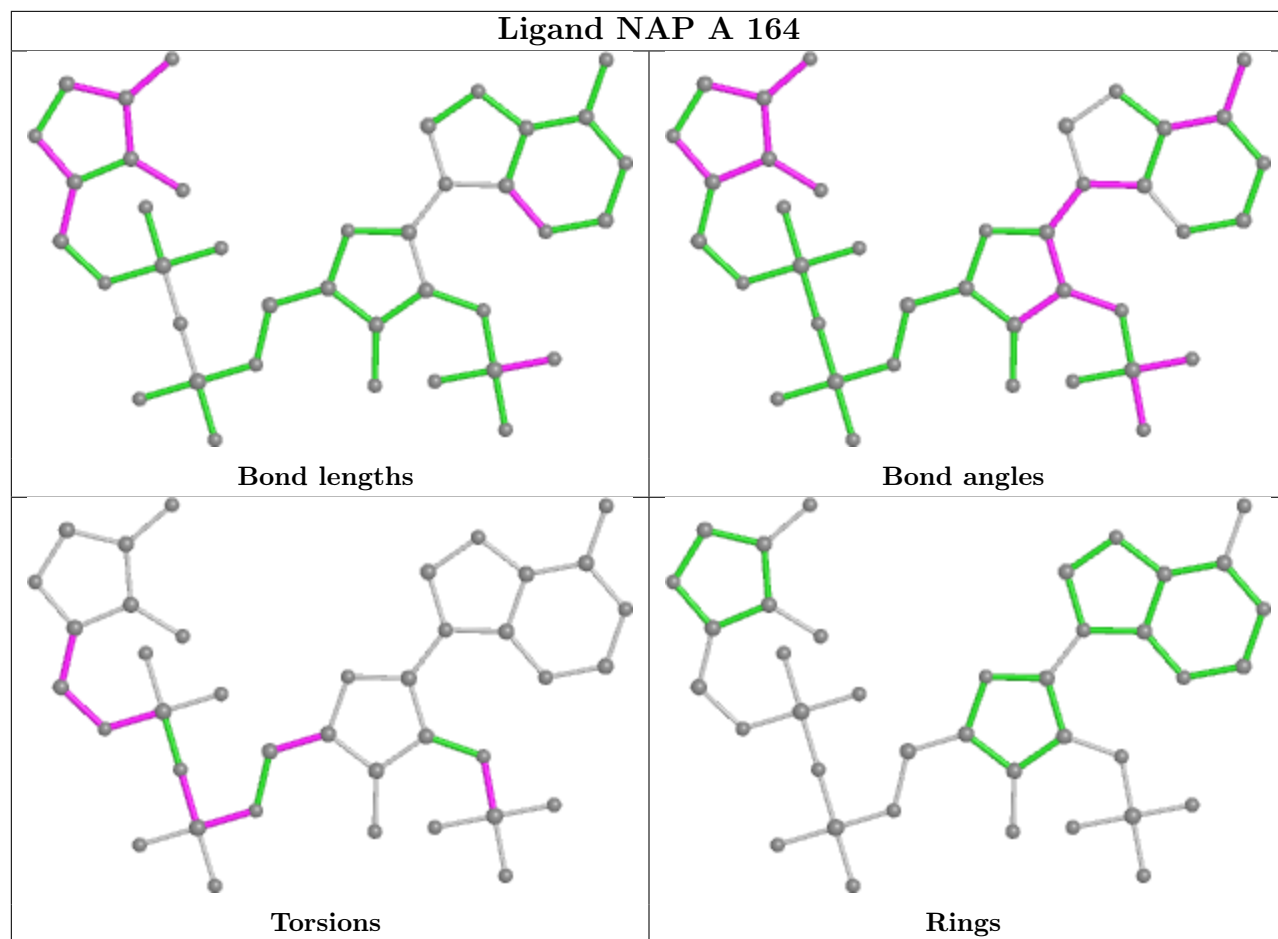
Mol	Chain	Res	Type	Atoms
2	A	161	DDF	C9-C10-C14-C13
4	A	164	NAP	C3D-C4D-C5D-O5D
4	A	164	NAP	PN-O3-PA-O1A
4	A	164	NAP	PN-O3-PA-O2A
4	A	164	NAP	C4D-C5D-O5D-PN
4	A	164	NAP	C5D-O5D-PN-O1N

There are no ring outliers.

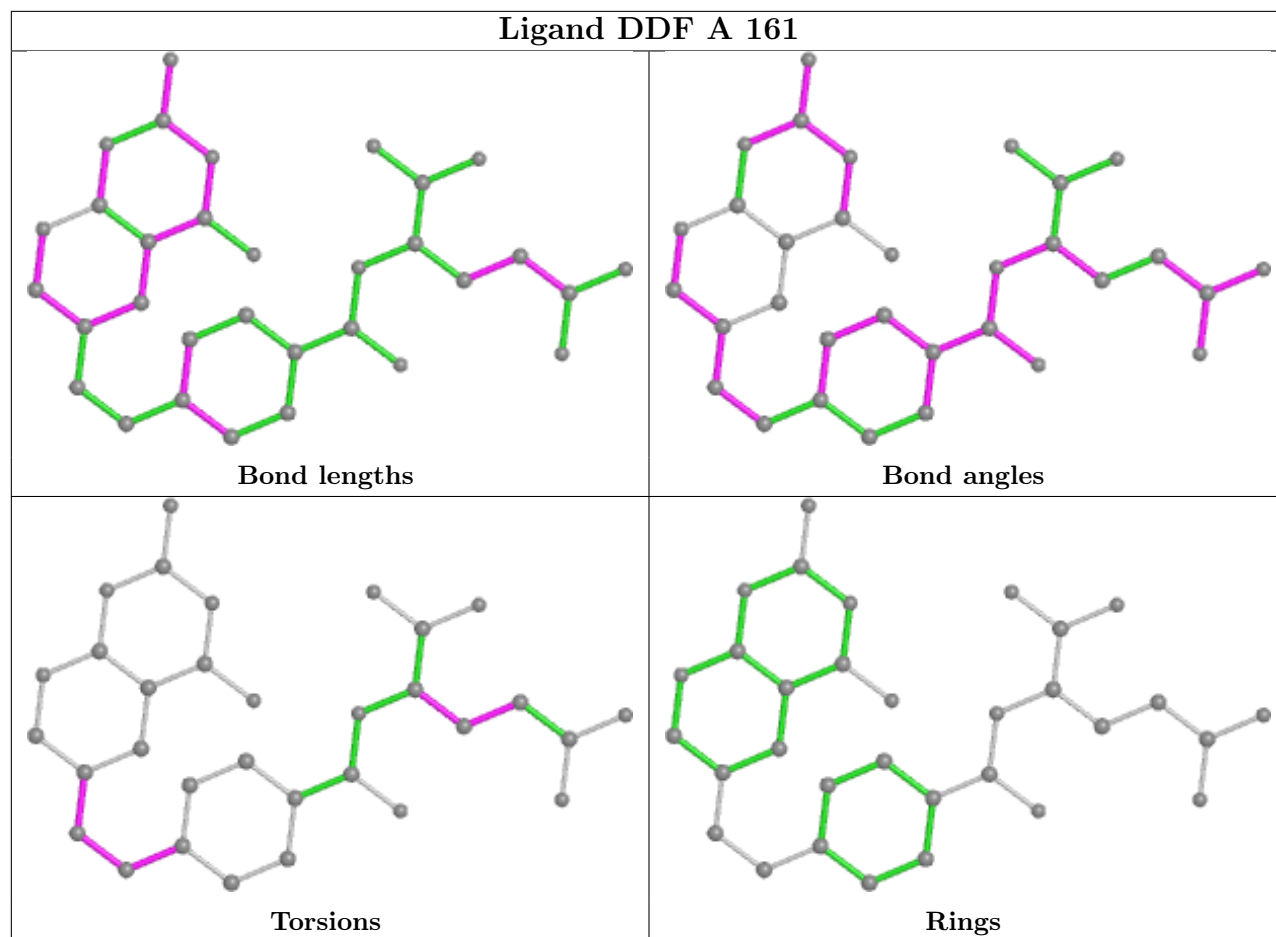
2 monomers are involved in 9 short contacts:

Mol	Chain	Res	Type	Clashes	Symm-Clashes
4	A	164	NAP	8	0
2	A	161	DDF	1	0

The following is a two-dimensional graphical depiction of Mogul quality analysis of bond lengths, bond angles, torsion angles, and ring geometry for all instances of the Ligand of Interest. In addition, ligands with molecular weight > 250 and outliers as shown on the validation Tables will also be included. For torsion angles, if less than 5% of the Mogul distribution of torsion angles is within 10 degrees of the torsion angle in question, then that torsion angle is considered an outlier. Any bond that is central to one or more torsion angles identified as an outlier by Mogul will be highlighted in the graph. For rings, the root-mean-square deviation (RMSD) between the ring in question and similar rings identified by Mogul is calculated over all ring torsion angles. If the average RMSD is greater than 60 degrees and the minimal RMSD between the ring in question and any Mogul-identified rings is also greater than 60 degrees, then that ring is considered an outlier. The outliers are highlighted in purple. The color gray indicates Mogul did not find sufficient equivalents in the CSD to analyse the geometry.







## 5.7 Other polymers [i](#)

There are no such residues in this entry.

## 5.8 Polymer linkage issues [i](#)

There are no chain breaks in this entry.

## 6 Fit of model and data [i](#)

### 6.1 Protein, DNA and RNA chains [i](#)

In the following table, the column labelled ‘#RSRZ> 2’ contains the number (and percentage) of RSRZ outliers, followed by percent RSRZ outliers for the chain as percentile scores relative to all X-ray entries and entries of similar resolution. The OWAB column contains the minimum, median, 95<sup>th</sup> percentile and maximum values of the occupancy-weighted average B-factor per residue. The column labelled ‘Q< 0.9’ lists the number of (and percentage) of residues with an average occupancy less than 0.9.

Mol	Chain	Analysed	<RSRZ>	#RSRZ>2	OWAB(Å <sup>2</sup> )	Q<0.9
1	A	159/159 (100%)	-0.66	4 (2%) 57 56	6, 21, 60, 96	2 (1%)

All (4) RSRZ outliers are listed below:

Mol	Chain	Res	Type	RSRZ
1	A	19	ALA	7.1
1	A	20	MET	2.9
1	A	18	ASN	2.4
1	A	17	GLU	2.1

### 6.2 Non-standard residues in protein, DNA, RNA chains [i](#)

There are no non-standard protein/DNA/RNA residues in this entry.

### 6.3 Carbohydrates [i](#)

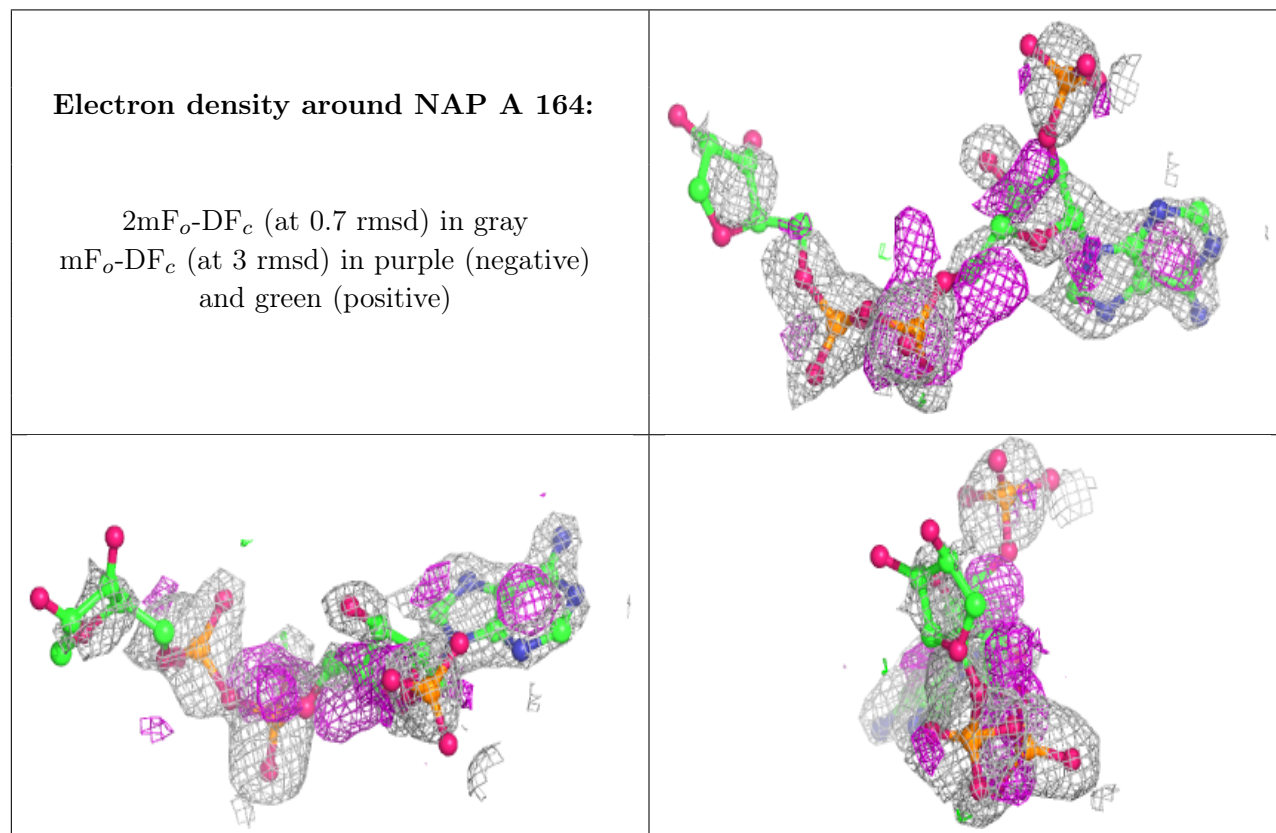
There are no monosaccharides in this entry.

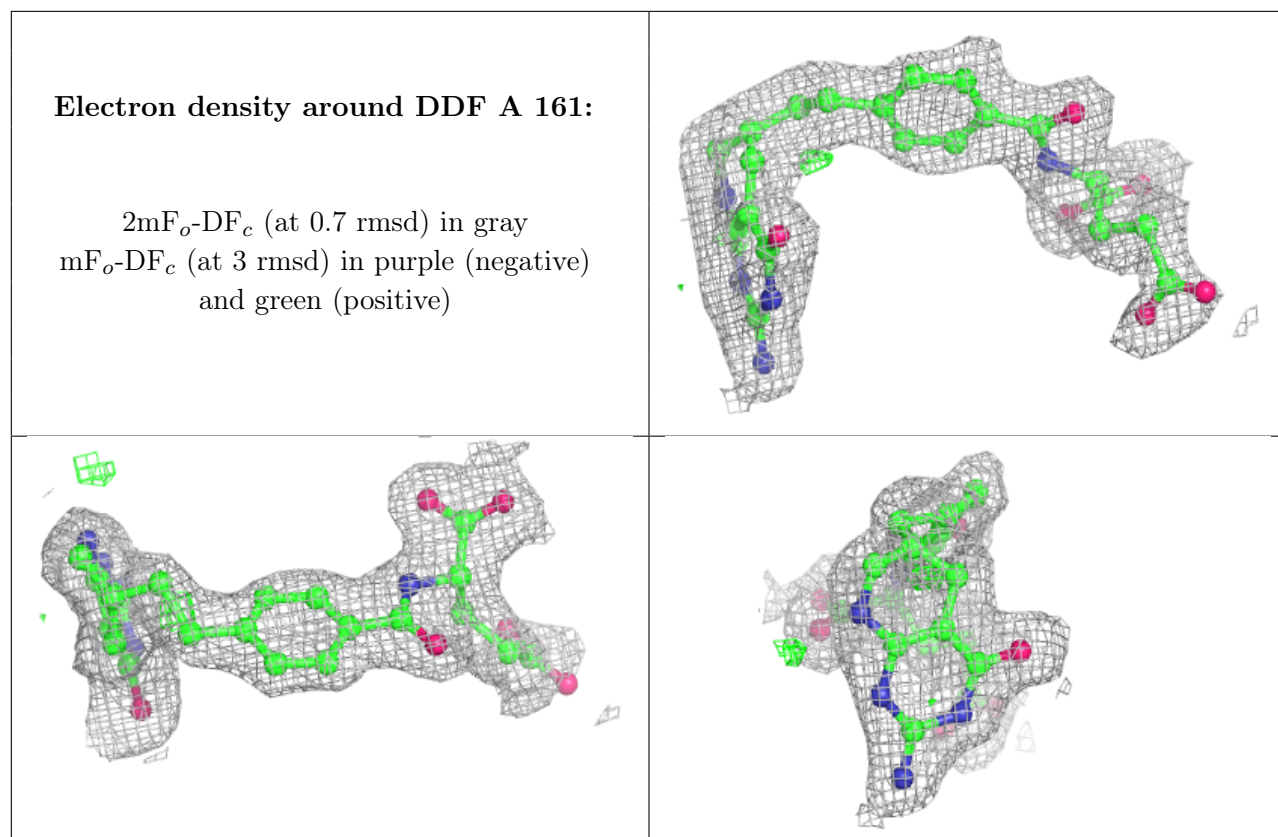
### 6.4 Ligands [i](#)

In the following table, the Atoms column lists the number of modelled atoms in the group and the number defined in the chemical component dictionary. The B-factors column lists the minimum, median, 95<sup>th</sup> percentile and maximum values of B factors of atoms in the group. The column labelled ‘Q< 0.9’ lists the number of atoms with occupancy less than 0.9.

Mol	Type	Chain	Res	Atoms	RSCC	RSR	B-factors(Å <sup>2</sup> )	Q<0.9
4	NAP	A	164	39/48	0.87	0.30	14,60,92,97	0
2	DDF	A	161	32/32	0.95	0.08	9,25,74,94	0
3	BME	A	162	2/4	0.96	0.08	39,39,39,43	0

The following is a graphical depiction of the model fit to experimental electron density of all instances of the Ligand of Interest. In addition, ligands with molecular weight > 250 and outliers as shown on the geometry validation Tables will also be included. Each fit is shown from different orientation to approximate a three-dimensional view.





## 6.5 Other polymers [i](#)

There are no such residues in this entry.